

## Lepidópteros de Sucre y Atlántico

John Ortega Galván<sup>1</sup>, Juan D. Guzman<sup>2</sup>, M. Cristina Martínez-Habibe<sup>2</sup>

<sup>1</sup> Estación Biológica Tierra Santa, El Roble, Sucre <sup>2</sup> Departamento de Química y Biología, Universidad del Norte, Km 5 vía Puerto Colombia, Barranquilla

Fotos: John Ortega Galván (JOG)

© John Ortega Galván [jj.ortegagalvan@gmail.com], Juan D. Guzman [talauma@gmail.com] y Cristina Martínez-Habibe [crishabibe@gmail.com]

(♂) Macho, (♀) Hembra

[fieldguides.fieldmuseum.org]

[813] versión 03/2017



1 *Hyalurga* sp.  
Arctiidae



2 *Hypercompe* sp.  
Arctiidae



3 *Pareuchaetes insulata*  
Arctiidae



4 *Utetheisa* aff. *ornatrix*  
Arctiidae



5 *Leucochroma corope*  
Crambidae



6 *Palpita flegia*  
Crambidae



7 *Melipotis fasciolaris*  
Erebiidae



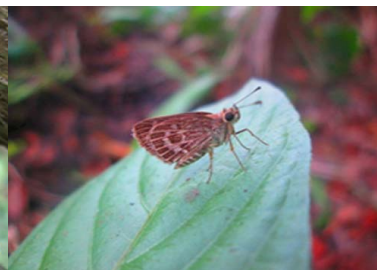
8 *Melanchroia aterea*  
Geometridae



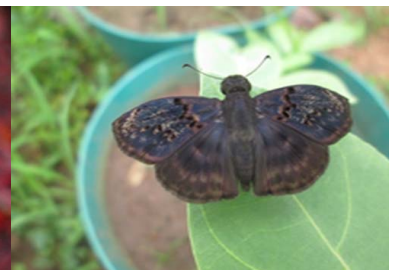
9 *Phrudocentra* sp.  
Geometridae



10 *Augiades epimethea*  
Hesperiiidae



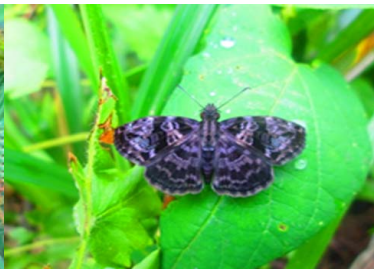
11 *Callimormus corades*  
Hesperiiidae



12 *Chiomara mithrax*  
Hesperiiidae



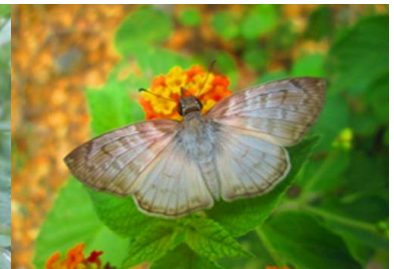
13 *Cogia calchas*  
Hesperiiidae



14 *Gorgythion* sp.  
Hesperiiidae



15 *Heliopyrgus domicella*  
Hesperiiidae



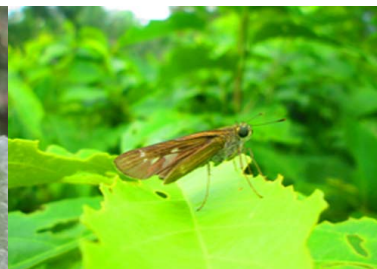
16 *Mylon* sp.  
Hesperiiidae



17 *Mysoria barcastus*  
Hesperiiidae



18 *Paches loxus*  
Hesperiiidae



19 *Panoquina* sp.  
Hesperiiidae



20 *Phocides polybius*  
Hesperiiidae



## Lepidópteros de Sucre y Atlántico

John Ortega Galván<sup>1</sup>, Juan D. Guzman<sup>2</sup>, M. Cristina Martínez-Habibe<sup>2</sup>

<sup>1</sup> Estación Biológica Tierra Santa, El Roble, Sucre <sup>2</sup> Departamento de Química y Biología, Universidad del Norte, Km 5 vía Puerto Colombia, Barranquilla

Fotos: John Ortega Galván (JOG)

© John Ortega Galván [jj.ortegagalvan@gmail.com], Juan D. Guzman [talauma@gmail.com] y Cristina Martínez-Habibe [crishabibe@gmail.com]

(♂) Macho, (♀) Hembra

[fieldguides.fieldmuseum.org]

[813] versión 03/2017



21 *Pompeius pompeius*  
Hesperiidae



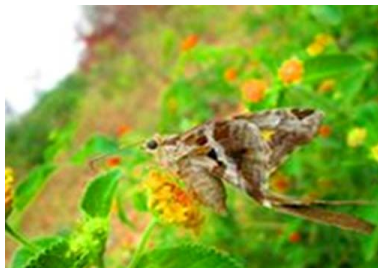
22 *Pyrgus orcus* ♂  
Hesperiidae



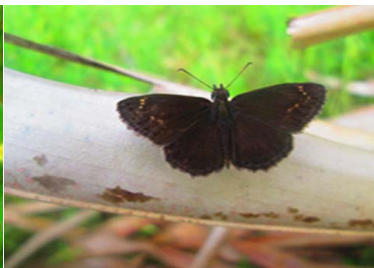
23 *Pyrgus orcus* ♀  
Hesperiidae



24 *Timochreon* sp.  
Hesperiidae



25 *Urbanus* sp.  
Hesperiidae



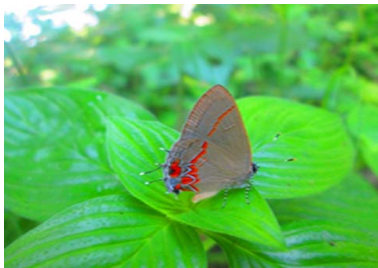
26 *Zopyrion satyrina*  
Hesperiidae



27 *Zopyrion satyrina*  
Hesperiidae



28 *Arawacus togarna*  
Lycaenidae



29 *Calycopis origo*  
Lycaenidae



30 *Electrostrymon* sp.  
Lycaenidae



31 *Hemiargus hanno*  
Lycaenidae



32 *Ministrymon una*  
Lycaenidae



33 *Panthiades bitias*  
Lycaenidae



34 *Pseudolycaena marsyas*  
Lycaenidae



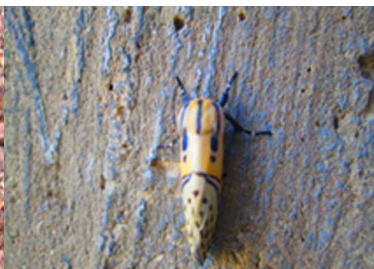
35 *Rekoa palegon*  
Lycaenidae



36 *Megalopyge lanata*  
Megalopygidae



37 *Ascalapha odorata*  
Noctuidae



38 *Diphthera festiva*  
Noctuidae



39 *Gonodonta* sp.  
Noctuidae



40 *Ramphia albizona*  
Noctuidae



**Lepidópteros de Sucre y Atlántico**

John Ortega Galván<sup>1</sup>, Juan D. Guzman<sup>2</sup>, M. Cristina Martínez-Habibe<sup>2</sup>

<sup>1</sup> Estación Biológica Tierra Santa, El Roble, Sucre <sup>2</sup> Departamento de Química y Biología, Universidad del Norte, Km 5 vía Puerto Colombia, Barranquilla

Fotos: John Ortega Galván (JOG)

© John Ortega Galván [jj.ortegagalvan@gmail.com], Juan D. Guzman [talauma@gmail.com] y Cristina Martínez-Habibe [crishabibe@gmail.com]

(♂) Macho, (♀) Hembra

[fieldguides.fieldmuseum.org]

[813] versión 03/2017



41 *Adelpha* sp.  
Nymphalidae



42 *Agraulis vanillae*  
Nymphalidae



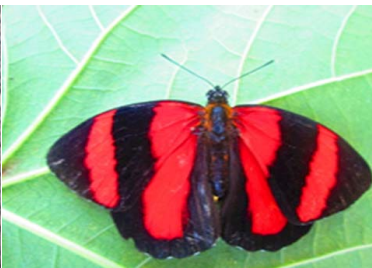
43 *Anartia jatrophae*  
Nymphalidae



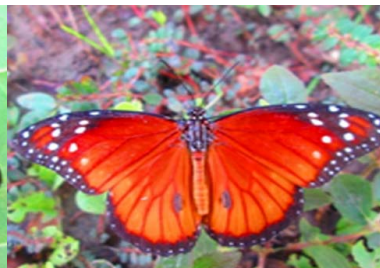
44 *Anthanassa tulcis*  
Nymphalidae



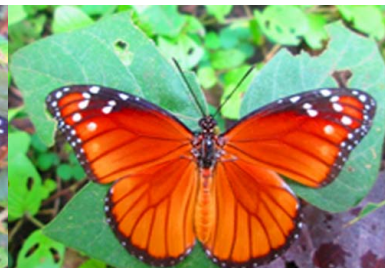
45 *Caligo telamonius*  
Nymphalidae



46 *Callicore pitheas*  
Nymphalidae



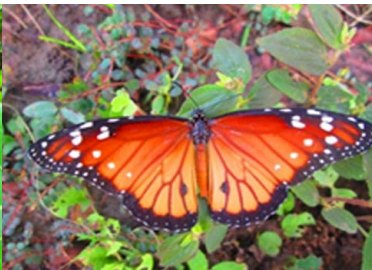
47 *Danaus eresimus* ♀  
Nymphalidae



48 *Danaus eresimus* ♀  
Nymphalidae



49 *Danaus gilippus* ♂  
Nymphalidae



50 *Danaus gilippus* ♀  
Nymphalidae



51 *Danaus plexippus*  
Nymphalidae



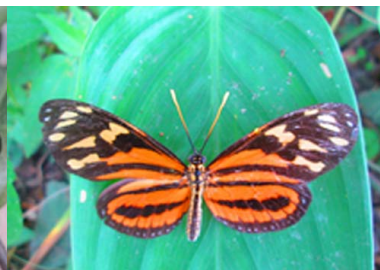
52 *Dryadula phaetusa* ♂  
Nymphalidae



53 *Dryas iulia*  
Nymphalidae



54 *Eueides isabella*  
Nymphalidae



55 *Eueides isabella*  
Nymphalidae



56 *Eunica malvina*  
Nymphalidae



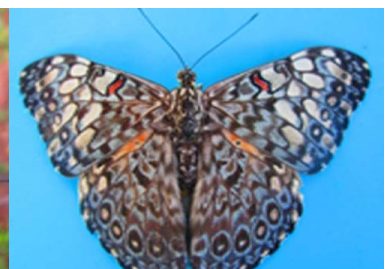
57 *Eunica mygdonia*  
Nymphalidae



58 *Euptoieta hegesia*  
Nymphalidae



59 *Hamadryas amphinome*  
Nymphalidae



60 *Hamadryas feronia* ♂  
Nymphalidae



Lepidópteros de Sucre y Atlántico

John Ortega Galván<sup>1</sup>, Juan D. Guzman<sup>2</sup>, M. Cristina Martínez-Habibe<sup>2</sup>

<sup>1</sup> Estación Biológica Tierra Santa, El Roble, Sucre <sup>2</sup> Departamento de Química y Biología, Universidad del Norte, Km 5 vía Puerto Colombia, Barranquilla

Fotos: John Ortega Galván (JOG)

© John Ortega Galván [jji.ortegagalvan@gmail.com], Juan D. Guzman [talauma@gmail.com] y Cristina Martínez-Habibe [crishabibe@gmail.com]

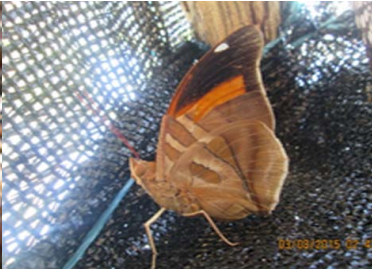
(♂) Macho, (♀) Hembra

[fieldguides.fieldmuseum.org]

[813] versión 03/2017



61 *Historis acheronta*  
Nymphalidae



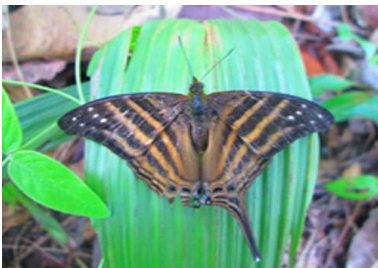
62 *Historis odius*  
Nymphalidae



63 *Hypna rufescens*  
Nymphalidae



64 *Junonia evarete*  
Nymphalidae



65 *Marpesia chiron*  
Nymphalidae



66 *Marpesia petreus*  
Nymphalidae



67 *Mechanitis polymnia veritabilis*  
Nymphalidae



68 *Morpho peleides*  
Nymphalidae



69 *Opsiphanes tamarindi*  
Nymphalidae



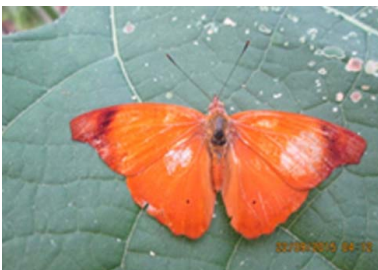
70 *Pyrrhogyra neaerea*  
Nymphalidae



71 *Siderone galanthis*  
Nymphalidae



72 *Siproeta stelenes*  
Nymphalidae



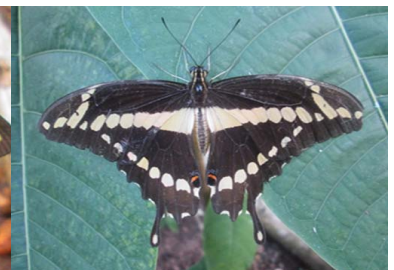
73 *Temenis laothoe*  
Nymphalidae



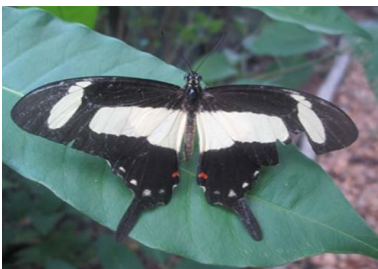
74 *Zaretis ellops*  
Nymphalidae



75 *Battus polydamas*  
Papilionidae



76 *Heraclides thoas*  
Papilionidae



77 *Heraclides torquatus* ♂  
Papilionidae



78 *Heraclides torquatus* ♀  
Papilionidae



79 *Parides anchises* ♂  
Papilionidae



80 *Parides anchises* ♀  
Papilionidae



Lepidópteros de Sucre y Atlántico

John Ortega Galván<sup>1</sup>, Juan D. Guzman<sup>2</sup>, M. Cristina Martínez-Habibe<sup>2</sup>

<sup>1</sup> Estación Biológica Tierra Santa, El Roble, Sucre <sup>2</sup> Departamento de Química y Biología, Universidad del Norte, Km 5 vía Puerto Colombia, Barranquilla

Fotos: John Ortega Galván (JOG)

© John Ortega Galván [jj.ortegagalvan@gmail.com], Juan D. Guzman [talauma@gmail.com] y Cristina Martínez-Habibe [crishabibe@gmail.com]

(♂) Macho, (♀) Hembra

[fieldguides.fieldmuseum.org]

[813] versión 03/2017



81 *Anteos maerula*  
Pieridae



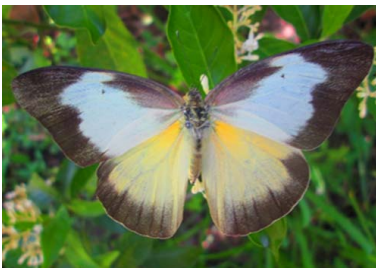
82 *Ascia monuste* ♂  
Pieridae



83 *Ascia monuste* ♀  
Pieridae



84 *Brangas* sp.  
Pieridae



85 *Glutophrissa drusilla* ♂  
Pieridae



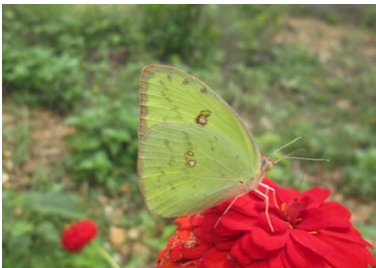
86 *Glutophrissa drusilla* ♀  
Pieridae



87 *Phoebis philea* ♂  
Pieridae



88 *Phoebis philea* ♀  
Pieridae



89 *Phoebis senae* ♂  
Pieridae



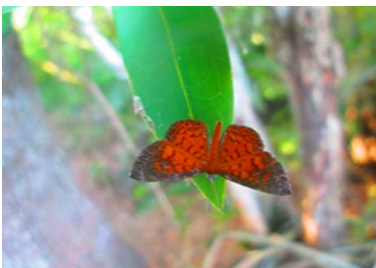
90 *Phoebis senae* ♀  
Pieridae



91 *Pyrisitia proterpia*  
Pieridae



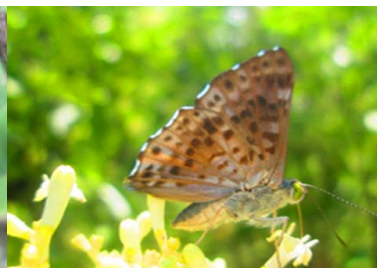
92 *Aricoris erostratus*  
Riodinidae



93 *Calospila* sp.  
Riodinidae



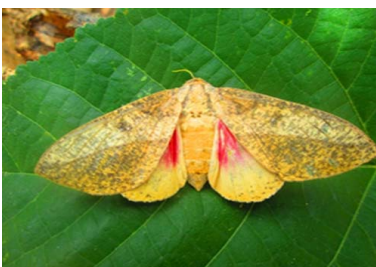
94 *Caria trochilus*  
Riodinidae



95 *Lasaia agesilas*  
Riodinidae



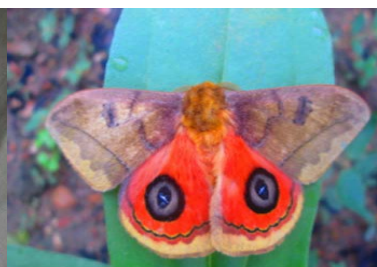
96 *Melanis* sp.  
Riodinidae



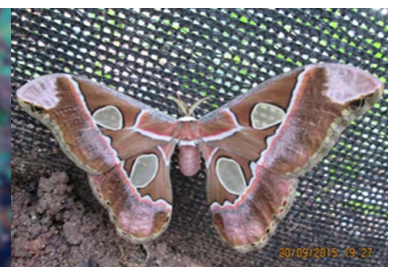
97 *Adeloneivaia isara*  
Saturniidae



98 *Adeloneivaia*  
Saturniidae



99 *Automeris* sp.  
Saturniidae



100 *Rothschildia aurota aurota*  
Saturniidae



Lepidópteros de Sucre y Atlántico

John Ortega Galván<sup>1</sup>, Juan D. Guzman<sup>2</sup>, M. Cristina Martínez-Habibe<sup>2</sup>

<sup>1</sup> Estación Biológica Tierra Santa, El Roble, Sucre <sup>2</sup> Departamento de Química y Biología, Universidad del Norte, Km 5 vía Puerto Colombia, Barranquilla

Fotos: John Ortega Galván (JOG)

© John Ortega Galván [j.ortegagalvan@gmail.com], Juan D. Guzman [talauma@gmail.com] y Cristina Martínez-Habibe [crishabibe@gmail.com]

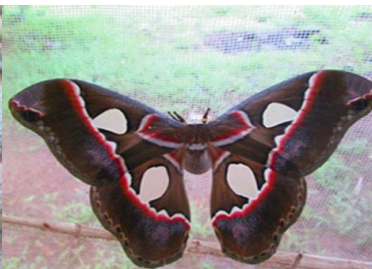
(♂) Macho, (♀) Hembra

[fieldguides.fieldmuseum.org]

[813] versión 03/2017



101 *Rothschildia erycina*  
Saturnidae



102 *Rothschildia lebeau*  
Saturnidae



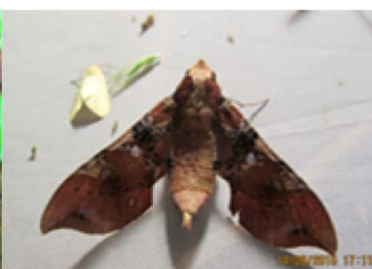
103 *Syssphinx molina*  
Saturnidae



104 *Aellopos fadus*  
Sphingidae



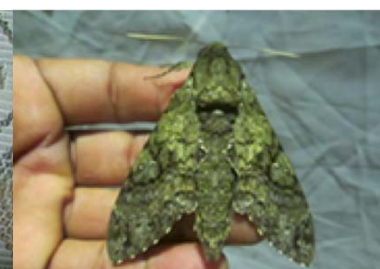
105 *Agius cingulata*  
Sphingidae



106 *Callionima parce*  
Sphingidae



107 *Cocytius antaeus* ♂  
Sphingidae



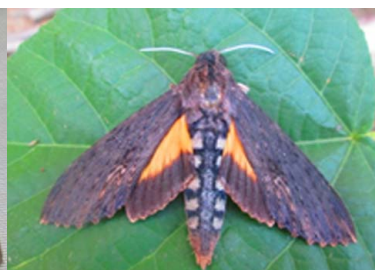
108 *Cocytius duponchel*  
Sphingidae



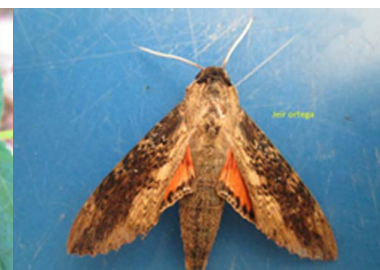
109 *Enyo lugubris*  
Sphingidae



110 *Enyo ocypte* ♀  
Sphingidae



111 *Erinnyis alope*  
Sphingidae



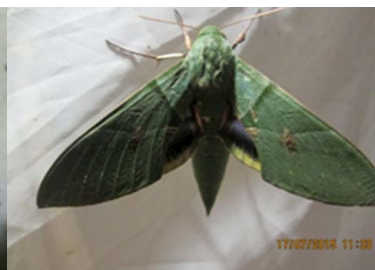
112 *Erinnyis crameri*  
Sphingidae



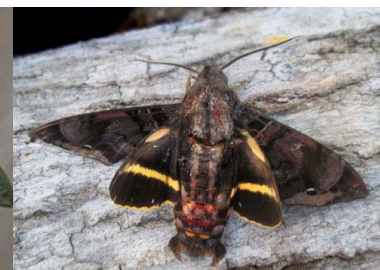
113 *Erinnyis ello*  
Sphingidae



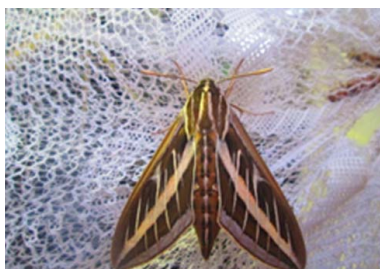
114 *Eumorpha fasciatus*  
Sphingidae



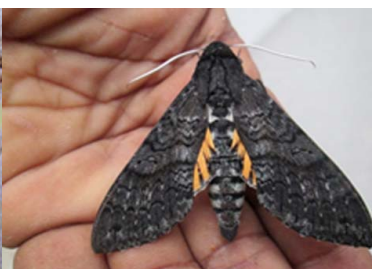
115 *Eumorpha labruscae*  
Sphingidae



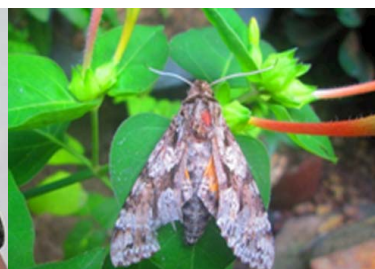
116 *Eupyrhoglossum* sp.  
Sphingidae



117 *Hyles lineata*  
Sphingidae



118 *Isognathus caricae*  
Sphingidae



119 *Isognathus inclitus rimosa*  
Sphingidae



120 *Manduca rustica*  
Sphingidae



## Lepidópteros de Sucre y Atlántico

John Ortega Galván<sup>1</sup>, Juan D. Guzman<sup>2</sup>, M. Cristina Martínez-Habibe<sup>2</sup>

<sup>1</sup> Estación Biológica Tierra Santa, El Roble, Sucre <sup>2</sup> Departamento de Química y Biología, Universidad del Norte, Km 5 vía Puerto Colombia, Barranquilla

Fotos: John Ortega Galván (JOG)

© John Ortega Galván [jj.ortegagalvan@gmail.com], Juan D. Guzman [talauma@gmail.com] y Cristina Martínez-Habibe [crishabibe@gmail.com]

(♂) Macho, (♀) Hembra

[fieldguides.fieldmuseum.org]

[813] versión 03/2017



121 *Manduca sexta*  
Sphingidae



122 *Neococytius cluentius*  
Sphingidae



123 *Pachylia ficus*  
Sphingidae



124 *Pachylioides resumens*  
Sphingidae



125 *Perigonia ilus*  
Sphingidae



126 *Perigonia ilus*  
Sphingidae



127 *Protambulyx strigilis*  
Sphingidae



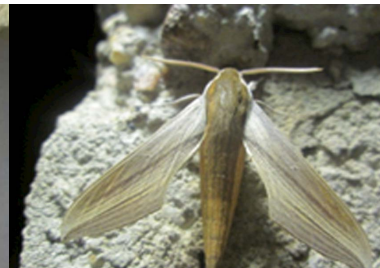
128 *Pseudosphinx tetrio*  
Sphingidae



129 *Xylophanes chiron*  
Sphingidae



130 *Xylophanes tersa*  
Sphingidae



131 *Xylophanes tersa*  
Sphingidae



132 *Belonoptera sanguinea*  
Thyrididae