

Minas Gerais (MG), BRASIL

Conspicuous Plants of Serra de Santa Rita Mítzi Brandão Biological Reserve and Fernando Bonillo Fernandes Municipal Park

Luis Fernando Alberti

Photos by: Luis Fernando Alberti, Dr. Produced by: Luis Fernando Alberti with support from Mauricio Djalles Costa and Giancarlo M. de Carli.
© Luis Fernando Alberti [nuandii@hotmail.com]. Support from Prefeitura Municipal de Santa Rita do Sapucaí, MG, Brazil and Prefeitura M. de Pouso Alegre.

[fieldguides.fieldmuseum.org] [861] version 1 07/2017



1 *Justicia* sp. ACANTHACEAE
ANGIOSPERM



2 *Ruellia* cf. *geminiflora*
ACANTHACEAE



3 *Prestonia* sp.
APOCYNACEAE



4 *Dendropanax cuneatum*
ARALIACEAE
Mature fruits



5 *Schefflera morototoni*
ARALIACEAE
Hemiepiphytic habit



6 *Asclepias curassavica*
ASCLEPIADACEAE



7 *Asclepias curassavica*
ASCLEPIADACEAE



8 *Ageratum fastigiatum*
ASTERACEAE



9 *Bacharis trimera*
ASTERACEAE



10 *Mikania hemisphaerica*
ASTERACEAE



11 *Piptocarpha macropoda*
ASTERACEAE



12 *Vernonanthura divaricate*
ASTERACEAE



13 *Langsdorffia hypogaea*
BALANOPHORACEAE
rare plant



14 *Langsdorffia hypogaea*
BALANOPHORACEAE
root parasite



15 *Langsdorffia hypogaea*
BALANOPHORACEAE



16 *Langsdorffia hypogaea*
BALANOP. Individual 3-sepal
flowers



17 *Scybalium fungiforme*
BALANOPHORACEAE Host root



18 *Scybalium fungiforme*
BALANOPHORACEAE rare plant



19 *Scybalium fungiforme*
BALANOPHORACEAE flower



20 *Scybalium fungiforme*
BALANOP. root parasite

Minas Gerais (MG), BRASIL
**CONSPICUOUS PLANTS of Serra de Santa Rita Mítzi Brandão Biological Reserve
 and Fernando Bonillo Fernandes Municipal Park**

Photos by: Luis Fernando Alberti, Dr. Produced by: Luis Fernando Alberti with support from Mauricio Djalles Costa and Giancarlo M. de Carli.
 © Luis Fernando Alberti [nuandii@hotmail.com]. Support from Prefeitura Municipal de Santa Rita do Sapucaí, MG, Brazil and Prefeitura M. de Pouso Alegre.

[fieldguides.fieldmuseum.org] [861] version 1 07/2017



21 *Scybalium fungiforme*
BALANOP. Single flowers



22 *S. fungiforme* BALANOP.
Conceição B. Águila



23 *Begonia paulensis*
BEGONIACEAE



24 *Begonia paulensis*
BEGONIACEAE



25 *Aechmea phanerophlebia*
BROMELIACEAE



26 *Billbergia distachia*
BROMELIACEAE



27 *Billbergia distachia*
BROMELIACEAE



28 *Billbergia distachia*
BROMELIACEAE



29 *Billbergia distachia*
BROMELIACEAE



30 *Hedyosmium brasiliense*
CHLORANTHACEAE



31 *Hedyosmium brasiliense*
CHLORANTHACEAE



32 *Hirtella gracilipes*
CHRYSOBALANACEAE



33 *Clethra scabra* [bacon tree]
CLETHRACEAE



34 *Dichorisandra hexandra*
COMMELINACEAE



35 *Dichorisandra hexandra*
COMMELINACEAE



36 *Tradescantia zanonia*
COMMELINACEAE



37 *Merremia macrocalyx*
CONVOLVULACEAE



38 *Davilla cf rugosa*
DILLENACEAE



39 *Sloanea cf hirsuta*
ELAEOCARPACEAE Rare plant



40 *Alchornea sidifolia*
EUPHORBIACEAE

Minas Gerais (MG), BRASIL
**Conspicuous Plants of Serra de Santa Rita Mítzi Brandão Biological Reserve and
 Fernando Bonillo Fernandes Municipal Park**

Luis Fernando Alberti

Photos by: Luis Fernando Alberti, Dr. Produced by: Luis Fernando Alberti with support from Mauricio Djalles Costa and Giancarlo M. de Carli.

© Luis Fernando Alberti [nuandii@hotmail.com]. Support from Prefeitura Municipal de Santa Rita do Sapucaí, MG, Brazil and Prefeitura M. de Pouso Alegre.

[fieldguides.fieldmuseum.org] [861] version 1 07/2017



41 *Croton lundianus*
EUPHORBIACEAE



42 *Croton* sp.
EUPHORBIACEAE



43 *Copaifera langsdorffii*
FAB. CAESALPINIOIDEAE
Fruits



44 *Copaifera langsdorffii*
FAB. CAESALPINIOIDEAE
Seeds



45 *Copaifera langsdorffii*
FAB. CAESALPINIOIDEAE



46 *Hymenaea courbaril* FAB.
CAESALP. Seedling and fruit



47 *Crotalaria lanceolata*
FABACEAE FABOIDEAE



48 *Piptadenia gonoacantha*
FAB. MIMOSOIDEAE



49 *P. gonoacantha* FAB. MIM.
[crocodile tree]



50 *Platycyamus regnellii*
FAB. PAPILIONOIDEAE



51 *P. regnellii* FAB.
PAPILIONOID. [blood tree]



52 *Strychnos brasiliensis*
LOGANIACEAE [otterhook]



53 *Lafoensia pacari*
LYTHRACEAE [thimble]



54 *Lafoensia pacari*
LYTHRACEAE [foxglove]



55 *Byrsonima cf. arthropoda*
MALPIGHIACEAE



56 *Corchorus argutus*
MALVACEAE



57 *Helicteres sacarolha*
MALVACEAE [srewtree]



58 *Helicteres sacarolha*
MALVACEAE [srewtree]



59 *Helicteres sacarolha*
MALVACEAE [srewtree]



60 *Luehea divaricata*
MALVACEAE [lash horse]

Minas Gerais (MG), BRASIL

Conspicuous Plants of Serra de Santa Rita Mítzi Brandão Biological Reserve and Fernando Bonillo Fernandes Municipal Park

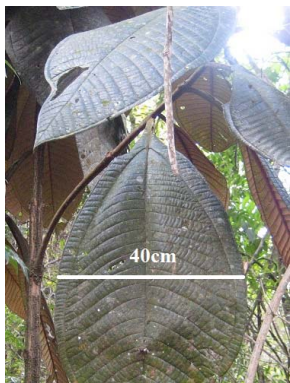
Luis Fernando Alberti

Photos by: Luis Fernando Alberti, Dr. Produced by: Luis Fernando Alberti with support from Mauricio Djalles Costa and Giancarlo M. de Carli.
© Luis Fernando Alberti [nuandii@hotmail.com]. Support from Prefeitura Municipal de Santa Rita do Sapucaí, MG, Brazil and Prefeitura M. de Pouso Alegre.

[fieldguides.fieldmuseum.org] [861] version 1 07/2017



61 *Bertolomia* sp.
MELASTOMATACEAE



62 *Miconia cabucu*
MELASTOMATACEAE



63 *Miconia cabucu*
MELASTOMATACEAE



64 *Tibouchina* cf. *cerastiifolia*
MELASTOMATACEAE



65 *Guarea* cf. *kunthiana*
MELIACEAE fruit



66 *Guarea macrophylla*
MELIACEAE fruit



67 *Guarea macrophylla*
MELIACEAE fruit



68 *Guarea macrophylla*
MELIACEAE



69 *Trichilia silvatica*
MELIACEAE flower



70 *Trichilia silvatica*
MELIACEAE fruit



71 *Virola sebifera*
MYRISTICACEAE



72 *Ludwigia octovalvis*
ONAGRACEAE



73 *Baptistonia* cf. *lietzei*
ORCHIDACEAE



74 *Eurystyles actinosophila*
ORCHIDACEAE rare plant



75 *Eurystyles actinosophila*
ORCHIDACEAE



76 *Eurystyles actinosophila*
ORCHIDACEAE



77 *Oncidium varicosum*
ORCHIDACEAE



78 *Sauroglossum* cf. *nitidum*
ORCHIDACEAE rare plant



79 *Sauroglossum* cf. *nitidum*
ORCHIDACEAE



80 *Sauroglossum* cf. *nitidum*
ORCHIDACEAE

Minas Gerais (MG), BRASIL
Conspicuous Plants of Serra de Santa Rita Mítzi Brandão Biological Reserve and
Fernando Bonillo Fernandes Municipal Park

Luis Fernando Alberti

Photos by: Luis Fernando Alberti, Dr. Produced by: Luis Fernando Alberti with support from Mauricio Djalles Costa and Giancarlo M. de Carli.
 © Luis Fernando Alberti [nuandii@hotmail.com]. Support from Prefeitura Municipal de Santa Rita do Sapucaí, MG, Brazil and Prefeitura M. de Pousos Alegre.
 [fieldguides.fieldmuseum.org] [861] version 1 07/2017



81 *Oxalis debilis*
OXALIDACEAE



82 *Oxalis pes caprae*
OXALIDACEAE



83 *Passiflora porophylla*
PASSIFLORACEAE



84 *Peperomia cf. quadrifolia*
PIPERACEAE



85 *Peperomia urocarpa*
PIPERACEAE



86 *Piper gaudchaudianum*
PIPERACEAE



87 *Piper miquelianum*
PIPERACEAE



88 *Piper permucronatum*
PIPERACEAE



89 *Triplaris americana*
POLYGONACEAE rare plant



90 *Chiococca cf. racemosa*
RUBIACEAE rare plant



91 *Coccocypselum cf. cordatum*
RUBIACEAE



92 *Coccocypselum lanceolatum*
RUBIACEAE



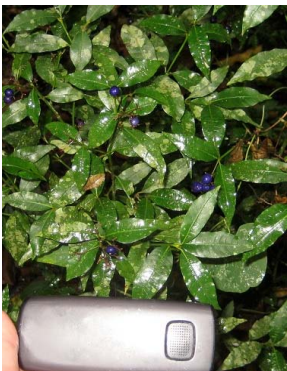
93 *Coussarea paniculata*
RUBIACEAE [wood coffee]



94 *Palicourea marcgravii*
RUBIACEAE poisonous



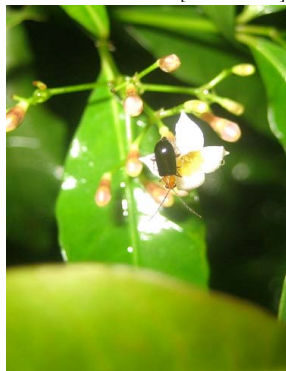
95 *Palicourea marcgravii*
RUBIACEAE



96 *Psychotria leiocarpa*
RUBIACEAE [wood coffee]



97 *Psychotria leiocarpa*
RUBIACEAE



98 *Psychotria leiocarpa*
RUBIACEAE



99 *Psychotria leiocarpa*
RUBIACEAE



100 *Psychotria leiocarpa*
RUBIACEAE

Minas Gerais (MG), BRASIL
Conspicuous Plants of Serra de Santa Rita Mítzi Brandão Biological Reserve and
Fernando Bonillo Fernandes Municipal Park

Luis Fernando Alberti

Photos by: Luis Fernando Alberti, Dr. Produced by: Luis Fernando Alberti with support from Mauricio Djalles Costa and Giancarlo M. de Carli.
 © Luis Fernando Alberti [nuandii@hotmail.com]. Support from Prefeitura Municipal de Santa Rita do Sapucaí, MG, Brazil and Prefeitura M. de Pouso Alegre.

[fieldguides.fieldmuseum.org] [861] version 1 07/2017



101 *Psychotria leiocarpa*
RUBIACEAE
mature fruits



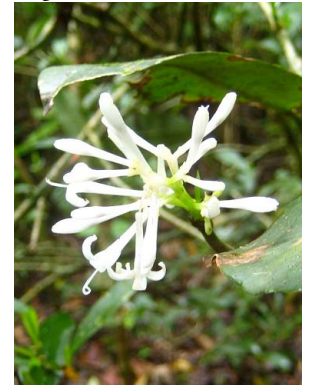
102 *Psychotria leiocarpa*
RUBIACEAE
mature fruits



103 *Psychotria leiocarpa*
RUBIACEAE
new leaves



104 *P. leiocarpa*
RUBIACEAE
[rare picture of seedlings]



105 *Rudgea cf. jasminoides*
RUBIACEAE



106 *Rudgea cf. jasminoides*
RUBIACEAE



107 *Sabicea grisea*
RUBIACEAE
rare plant



108 *Sabicea grisea*
RUBIACEAE
immature fruits



109 *Sabicea grisea*
RUBIACEAE
immature fruits



110 *Sabicea grisea*
RUBIACEAE
mature fruits



111 *Sabicea grisea*
RUBIACEAE seeds



112 *Esenbeckia cf. grandiflora*
RUTACEAE



113 *Esenbeckia cf. grandiflora*
RUTACEAE fruit



114 *Allophyllus cf. edulis*
SAPINDACEAE



115 *Siparuna brasiliensis*
SIPARUNACEAE



116 *Siparuna guianensis*
SIPARUNACEAE



117 *Siparuna guianensis*
SIPARUNACEAE
immature fruits



118 *S. guianensis*
SIPARUNACEAE
open fruits and seeds



119 *Styrax ferrugineus*
STYRACACEAE



120 *Styrax ferrugineus*
STYRACACEAE

Minas Gerais (MG), BRASIL

Conspicuous Plants of Serra de Santa Rita Mítzi Brandão Biological Reserve and Fernando Bonillo Fernandes Municipal Park

Luis Fernando Alberti

Photos by: Luis Fernando Alberti, Dr. Produced by: Luis Fernando Alberti with support from Mauricio Djalles Costa and Giancarlo M. de Carli.
© Luis Fernando Alberti [nuandii@hotmail.com]. Support from Prefeitura Municipal de Santa Rita do Sapucaí, MG, Brazil and Prefeitura M. de Pouso Alegre.

[fieldguides.fieldmuseum.org] [861] version 1 07/2017



101 *Styrox ferrugineus*
STYRACACEAE fruits



102 *Styrox ferrugineus*
STYRACACEAE



103 *Cecropia pachystachya*
URTICACEAE



104 *Lippia cf alba*
VERBENACEAE poisonous



105 *Stachytarpheta cayennensis*
VERBENACEAE



106 *Hybanthus sp.*
VIOLACEAE



107 *Araucaria angustifolia*
ARAUCARIACEAE Gymnosperme



108 *Anemia phyllitidis*
ANEMIACEAE Pteridophyte



109 Cf *Asplenium sp.*
ASPLENIACEAE



110 *Blechnum brasiliense*
BLECHNACEAE



111 *Blechnum sp.*
BLECHNACEAE



112 *Cyathea sp.*
CYATHEACEAE
threatened specie



113 *Adiantopsis cf radiata*
PTERIDACEAE



114 *Adiantum sp.*
PTERIDACEAE



115 *Adiantum sp.*
PTERIDACEAE
sores



116 *Thelypteris sp.*
THELYPTERIDACEAE

The author would like to thank Adriano Maruyama, Aloysio Teixeira, Anderson Mello, André Benedito, Augusto Francener Nogueira Gonzaga, Daniel Jorge Habib, Daniel Saueressig, Diogo Bueno Kanouté, Eduardo Oliveira, Francisco Santos, Geraldo Pereira, José Lima, Laércio Loures, Leonardo Jales Leitão, Manoel Passos, Marco Pellegrini, Pedro Zocchi, Rene Rocha, Rodolph Delfino Sartin, Rodrigo Camargo, Rodrigo Penati, Tadeu Gomes, Tales Sangoi, Teylor Comunello, Wanderson Fernandes, William José Barbosa, William Krack Matzenauer, William Mendes and Zizo Guimarães for helping with plant identification.



Left: Rerserve Mitz Brandão in Santa Rita do Sapucaí, Minas Gerais Brazil, where the majority of plantpictures were took. Right: Parque Municipal Fernando Bonillo Fernandes in Pouso Alegre, MG, Brazil

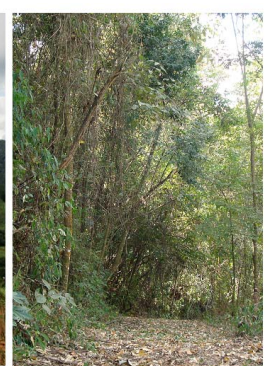


Photo: Sílvia H. Lopes