

VASCULAR EPIPHYTES of HUE Mauá, Telêmaco Borba, Brazil

Greta Aline Dettke¹, Daiane dos Reis-Santos², Paulo de Tarso Sambugaro-Santos² & Maria Auxiliadora Milaneze-Gutierrez²

¹Universidade Tecnológica Federal do Paraná (UTFPR – Campo Mourão, Brazil), ²Universidade Estadual do Paraná (UEM – Maringá, Brazil).

Photos by: D. Reis-Santos, P.T. Sambugaro-Santos & M.A. Milaneze-Gutierrez, except where indicated. Produced by: G.A. Dettke.

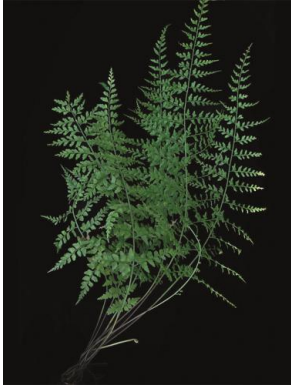
© M.A. Milaneze-Gutierrez [milaneze@uem.br]

[fieldguides.fieldmuseum.org]

[894]

version 1

1/2018



1 *Asplenium gastonis*
ASPLENIACEAE



2 *Asplenium gastonis*
ASPLENIACEAE



3 *Asplenium serratum*
ASPLENIACEAE



4 *Asplenium serratum*
ASPLENIACEAE



5 *Asplenium serratum*
ASPLENIACEAE



6 *Elaphoglossum macrophyllum*
DRYOPTERIDACEAE



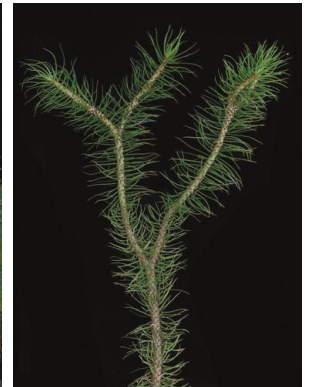
7 *Elaphoglossum macrophyllum*
DRYOPTERIDACEAE



8 *Elaphoglossum macrophyllum*
DRYOPTERIDACEAE



9 *Phlegmariurus mandiocanus*
LYCOPODIACEAE



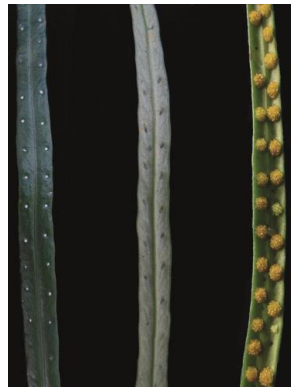
10 *Phlegmariurus mandiocanus*
LYCOPODIACEAE



11 *Phlegmariurus mandiocanus*
LYCOPODIACEAE



12 *Campyloneurum aglaolepis*
POLYPODIACEAE



13 *Campyloneurum aglaolepis*
POLYPODIACEAE



14 *Campyloneurum nitidum*
POLYPODIACEAE



15 *Campyloneurum nitidum*
POLYPODIACEAE



16 *Campyloneurum rigidum*
POLYPODIACEAE



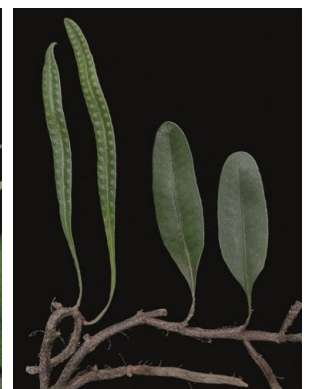
17 *Campyloneurum rigidum*
POLYPODIACEAE



18 *Campyloneurum rigidum*
POLYPODIACEAE



19 *Microgramma squamulosa*
POLYPODIACEAE



20 *Microgramma squamulosa*
POLYPODIACEAE

VASCULAR EPIPHYTES of HUE Mauá, Telêmaco Borba, Brazil

Greta Aline Dettke¹, Daiane dos Reis-Santos², Paulo de Tarso Sambugaro-Santos² & Maria Auxiliadora Milaneze-Gutierrez²

¹Universidade Tecnológica Federal do Paraná (UTFPR – Campo Mourão, Brazil), ²Universidade Estadual do Paraná (UEM – Maringá, Brazil).

Photos by: D. Reis-Santos, P.T. Sambugaro-Santos & M.A. Milaneze-Gutierrez, except where indicated. Produced by: G.A. Dettke.

© M.A. Milaneze-Gutierrez [milaneze@uem.br]

[fieldguides.fieldmuseum.org]

[894] version 1 1/2018



21 *Microgramma squamulosa*
POLYPODIACEAE



22 *Microgramma vacciniifolia*
POLYPODIACEAE



23 *Microgramma vacciniifolia*
POLYPODIACEAE



24 *Niphidium crassifolium*
POLYPODIACEAE



25 *Niphidium crassifolium*
POLYPODIACEAE



26 *Niphidium crassifolium*
POLYPODIACEAE



27 *Niphidium crassifolium*
POLYPODIACEAE



28 *Pecluma pectinatiformis*
POLYPODIACEAE



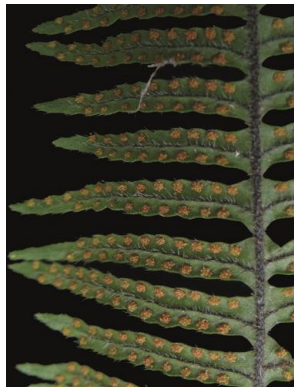
29 *Pecluma pectinatiformis*
POLYPODIACEAE



30 *Pecluma pectinatiformis*
POLYPODIACEAE



31 *Pecluma pectinatiformis*
POLYPODIACEAE



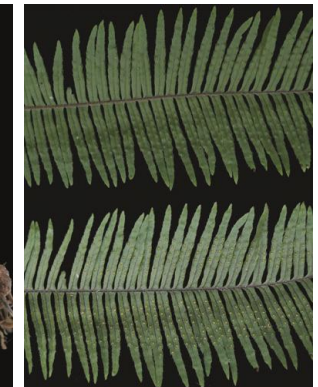
32 *Pecluma pectinatiformis*
POLYPODIACEAE



33 *Pecluma sicca*
POLYPODIACEAE



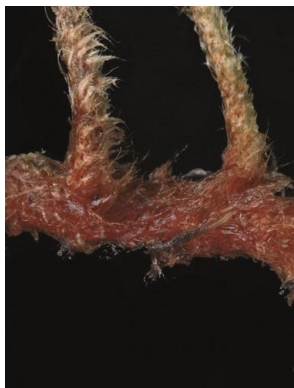
34 *Pecluma sicca*
POLYPODIACEAE



35 *Pecluma sicca*
POLYPODIACEAE



36 *Pleopeltis hirsutissima*
POLYPODIACEAE



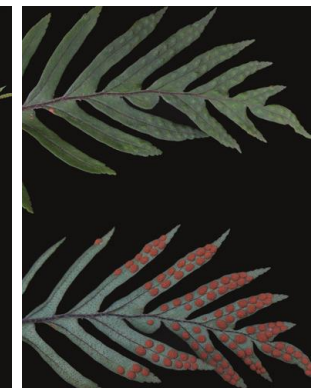
37 *Pleopeltis hirsutissima*
POLYPODIACEAE



38 *Pleopeltis hirsutissima*
POLYPODIACEAE



39 *Pleopeltis pleopeltifolia*
POLYPODIACEAE



40 *Pleopeltis pleopeltifolia*
POLYPODIACEAE

VASCULAR EPIPHYTES of HUE Mauá, Telêmaco Borba, Brazil

Greta Aline Dettke¹, Daiane dos Reis-Santos², Paulo de Tarso Sambugaro-Santos² & Maria Auxiliadora Milaneze-Gutierrez²

¹Universidade Tecnológica Federal do Paraná (UTFPR – Campo Mourão, Brazil), ²Universidade Estadual do Paraná (UEM – Maringá, Brazil).

Photos by: D. Reis-Santos, P.T. Sambugaro-Santos & M.A. Milaneze-Gutierrez, except where indicated. Produced by: G.A. Dettke.

© M.A. Milaneze-Gutierrez [milaneze@uem.br]

[fieldguides.fieldmuseum.org]

[894] version 1 1/2018



41 *Serpocaulon catharinae*
POLYPODIACEAE



42 *Serpocaulon catharinae*
POLYPODIACEAE



43 *Serpocaulon catharinae*
POLYPODIACEAE



44 *Selaginella microphylla*
SELAGINELLACEAE



45 *Selaginella microphylla*
SELAGINELLACEAE



46 *Selaginella microphylla*
SELAGINELLACEAE



47 *Vittaria lineata*
VITTARIACEAE



48 *Vittaria lineata*
VITTARIACEAE



49 *Philodendron appendiculatum*
ARACEAE



50 *Philodendron appendiculatum*
ARACEAE



51 *Philodendron bipinnatifidum*
ARACEAE



52 *Philodendron bipinnatifidum*
ARACEAE



53 *Philodendron propinquum*
ARACEAE



54 *Acanthostachys strobilacea*
BROMELIACEAE



55 *Acanthostachys strobilacea*
BROMELIACEAE



56 *Acanthostachys strobilacea*
BROMELIACEAE



57 *Acanthostachys strobilacea*
BROMELIACEAE



58 *Aechmea distichantha*
BROMELIACEAE



59 *Aechmea distichantha*
BROMELIACEAE



60 *Aechmea recurvata*
BROMELIACEAE

VASCULAR EPIPHYTES of HUE Mauá, Telêmaco Borba, Brazil

Greta Aline Dettke¹, Daiane dos Reis-Santos², Paulo de Tarso Sambugaro-Santos² & Maria Auxiliadora Milaneze-Gutierrez²

¹Universidade Tecnológica Federal do Paraná (UTFPR – Campo Mourão, Brazil), ²Universidade Estadual do Paraná (UEM – Maringá, Brazil).

Photos by: D. Reis-Santos, P.T. Sambugaro-Santos & M.A. Milaneze-Gutierrez, except where indicated. Produced by: G.A. Dettke.

© M.A. Milaneze-Gutierrez [milaneze@uem.br]

[fieldguides.fieldmuseum.org]

[894] version 1 1/2018



61 *Aechmea recurvata*
BROMELIACEAE



62 *Aechmea recurvata*
BROMELIACEAE



63 *Billbergia nutans*
BROMELIACEAE



64 *Billbergia nutans*
BROMELIACEAE



65 *Billbergia nutans*
BROMELIACEAE



66 *Billbergia nutans*
BROMELIACEAE



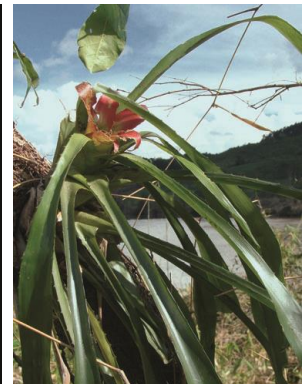
67 *Billbergia zebrina*
BROMELIACEAE



68 *Billbergia zebrina*
BROMELIACEAE



69 *Billbergia zebrina*
BROMELIACEAE



70 *Nidularium innocentii*
BROMELIACEAE



71 *Nidularium innocentii*
BROMELIACEAE



72 *Tillandsia polystachia*
BROMELIACEAE



73 *Tillandsia polystachia*
BROMELIACEAE



74 *Tillandsia polystachia*
BROMELIACEAE



75 *Tillandsia polystachia*
BROMELIACEAE



76 *Tillandsia tenuifolia*
BROMELIACEAE



77 *Tillandsia tenuifolia*
BROMELIACEAE



78 *Tillandsia tenuifolia*
BROMELIACEAE



79 *Tillandsia tenuifolia*
BROMELIACEAE



80 *Tillandsia tenuifolia*
BROMELIACEAE

VASCULAR EPIPHYTES of HUE Mauá, Telêmaco Borba, Brazil

Greta Aline Dettke¹, Daiane dos Reis-Santos², Paulo de Tarso Sambugaro-Santos² & Maria Auxiliadora Milaneze-Gutierrez²

¹Universidade Tecnológica Federal do Paraná (UTFPR – Campo Mourão, Brazil), ²Universidade Estadual do Paraná (UEM – Maringá, Brazil).

Photos by: D. Reis-Santos, P.T. Sambugaro-Santos & M.A. Milaneze-Gutierrez, except where indicated. Produced by: G.A. Dettke.

© M.A. Milaneze-Gutierrez [milaneze@uem.br]

[fieldguides.fieldmuseum.org]

[894]

version 1

1/2018



81 *Vriesea flava*
BROMELIACEAE



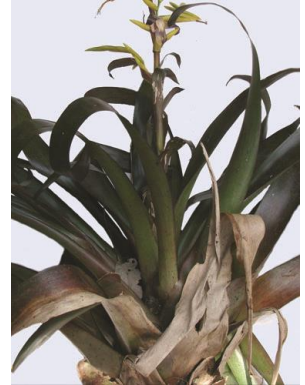
82 *Vriesea flava*
BROMELIACEAE



83 *Vriesea flava*
BROMELIACEAE



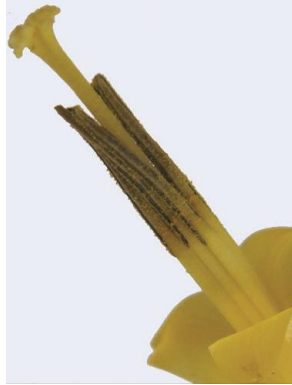
84 *Vriesea friburgensis*
BROMELIACEAE



85 *Vriesea friburgensis*
BROMELIACEAE



86 *Vriesea friburgensis*
BROMELIACEAE



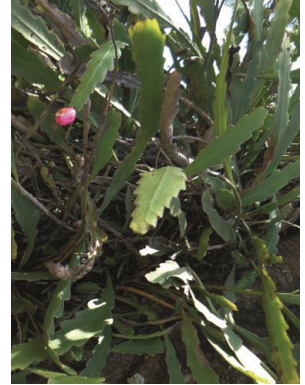
87 *Vriesea friburgensis*
BROMELIACEAE



88 *Wittrockia cyathiformis*
BROMELIACEAE



89 *Wittrockia cyathiformis*
BROMELIACEAE



90 *Epiphyllum phyllanthus*
CACTACEAE



91 *Epiphyllum phyllanthus*
CACTACEAE



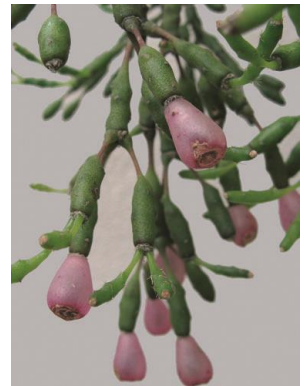
92 *Epiphyllum phyllanthus*
CACTACEAE



93 *Hatiora salicornioides*
CACTACEAE



94 *Hatiora salicornioides*
CACTACEAE



95 *Hatiora salicornioides*
CACTACEAE



96 *Lepismium cruciforme*
CACTACEAE



97 *Lepismium cruciforme*
CACTACEAE



98 *Lepismium cruciforme*
CACTACEAE



99 *Lepismium cruciforme*
CACTACEAE



100 *Lepismium houlettianum*
CACTACEAE

HUE Mauá, Atlantic Forest biome, Paraná State – BRAZIL

VASCULAR EPIPHYTES of HUE Mauá, Telêmaco Borba, Brazil

Greta Aline Dettke¹, Daiane dos Reis-Santos², Paulo de Tarso Sambugaro-Santos² & Maria Auxiliadora Milaneze-Gutierrez²

¹Universidade Tecnológica Federal do Paraná (UTFPR – Campo Mourão, Brazil), ²Universidade Estadual do Paraná (UEM – Maringá, Brazil).

Photos by: D. Reis-Santos, P.T. Sambugaro-Santos & M.A. Milaneze-Gutierrez, except where indicated. Produced by: G.A. Dettke.

© M.A. Milaneze-Gutierrez [milaneze@uem.br]

[fieldguides.fieldmuseum.org]

[894] version 1 1/2018



101 *Lepismium houlettianum*
CACTACEAE



102 *Lepismium houlettianum*
CACTACEAE



103 *Lepismium warmingianum*
CACTACEAE



104 *Lepismium warmingianum*
CACTACEAE



105 *Lepismium warmingianum*
CACTACEAE



106 *Rhipsalis cereuscula*
CACTACEAE



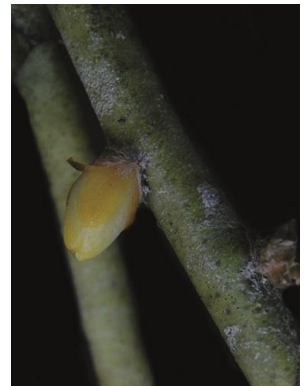
107 *Rhipsalis cereuscula*
CACTACEAE



108 *Rhipsalis cereuscula*
CACTACEAE



109 *Rhipsalis floccosa*
CACTACEAE



110 *Rhipsalis floccosa*
CACTACEAE



111 *Rhipsalis floccosa*
CACTACEAE



112 *Rhipsalis floccosa*
(shadow) CACTACEAE



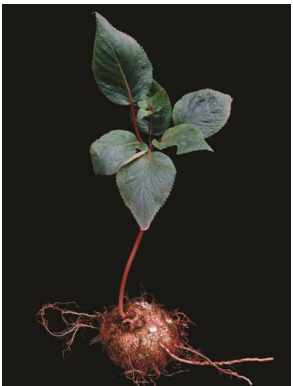
113 *Rhipsalis floccosa*
(shadow) CACTACEAE



114 *Tradescantia fluminensis*
COMMELINACEAE



115 *Tradescantia fluminensis*
COMMELINACEAE



116 *Sinningia douglasii*
GESNERIACEAE



117 *Sinningia douglasii*
GESNERIACEAE



118 *Sinningia douglasii*
GESNERIACEAE



119 *Sinningia douglasii*
GESNERIACEAE



120 *Acianthera aphthosa*
ORCHIDACEAE

VASCULAR EPIPHYTES of HUE Mauá, Telêmaco Borba, Brazil

Greta Aline Dettke¹, Daiane dos Reis-Santos², Paulo de Tarso Sambugaro-Santos² & Maria Auxiliadora Milaneze-Gutierrez²

¹Universidade Tecnológica Federal do Paraná (UTFPR – Campo Mourão, Brazil), ²Universidade Estadual do Paraná (UEM – Maringá, Brazil).

Photos by: D. Reis-Santos, P.T. Sambugaro-Santos & M.A. Milaneze-Gutierrez, except where indicated. Produced by: G.A. Dettke.

© M.A. Milaneze-Gutierrez [milaneze@uem.br]

[fieldguides.fieldmuseum.org]

[894] version 1 1/2018



121 *Acianthera apthosa*
ORCHIDACEAE



122 *Acianthera apthosa*
ORCHIDACEAE



123 *Acianthera apthosa*
ORCHIDACEAE



124 *Acianthera fenestrata*
ORCHIDACEAE



125 *Acianthera fenestrata*
ORCHIDACEAE



126 *Acianthera hygrophila*
ORCHIDACEAE



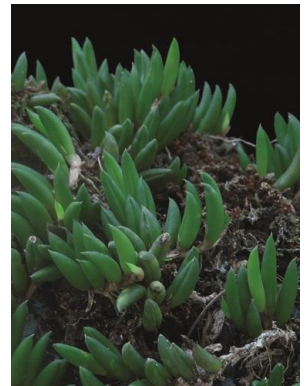
127 *Acianthera hygrophila*
ORCHIDACEAE



128 *Acianthera hygrophila*
ORCHIDACEAE



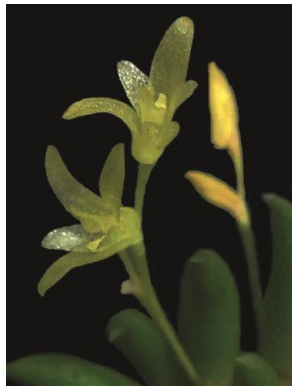
129 *Acianthera leptotifolia*
ORCHIDACEAE



130 *Acianthera leptotifolia*
ORCHIDACEAE



131 *Acianthera leptotifolia*
ORCHIDACEAE



132 *Acianthera leptotifolia*
ORCHIDACEAE



133 *Acianthera leptotifolia*
ORCHIDACEAE



134 *Acianthera luteola*
ORCHIDACEAE



135 *Acianthera luteola*
ORCHIDACEAE



136 *Acianthera luteola*
ORCHIDACEAE



137 *Acianthera pubescens*
ORCHIDACEAE



138 *Acianthera pubescens*
ORCHIDACEAE



139 *Acianthera pubescens*
ORCHIDACEAE



140 *Acianthera pubescens*
ORCHIDACEAE

VASCULAR EPIPHYTES of HUE Mauá, Telêmaco Borba, Brazil

Greta Aline Dettke¹, Daiane dos Reis-Santos², Paulo de Tarso Sambugaro-Santos² & Maria Auxiliadora Milaneze-Gutierrez²

¹Universidade Tecnológica Federal do Paraná (UTFPR – Campo Mourão, Brazil), ²Universidade Estadual do Paraná (UEM – Maringá, Brazil).

Photos by: D. Reis-Santos, P.T. Sambugaro-Santos & M.A. Milaneze-Gutierrez, except where indicated. Produced by: G.A. Dettke.

© M.A. Milaneze-Gutierrez [milaneze@uem.br]

[fieldguides.fieldmuseum.org]

[894] version 1 1/2018



141 *Acianthera pubescens*
ORCHIDACEAE



142 *Acianthera recurva*
ORCHIDACEAE



143 *Acianthera recurva*
ORCHIDACEAE



144 *Acianthera recurva*
ORCHIDACEAE



145 *Acianthera saundersiana*
ORCHIDACEAE



146 *Acianthera saundersiana*
ORCHIDACEAE



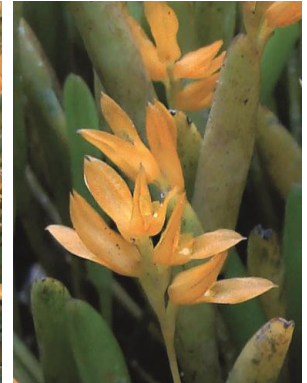
147 *Acianthera saundersiana*
ORCHIDACEAE



148 *Acianthera saundersiana*
ORCHIDACEAE



149 *Acianthera sonderiana*
ORCHIDACEAE



150 *Acianthera sonderiana*
ORCHIDACEAE



151 *Acianthera sonderiana*
ORCHIDACEAE



152 *Acianthera wagneriana*
ORCHIDACEAE



153 *Acianthera wagneriana*
ORCHIDACEAE



154 *Acianthera wagneriana*
ORCHIDACEAE



155 *Acianthera wagneriana*
ORCHIDACEAE



156 *Anathallis brevipes*
ORCHIDACEAE



157 *Anathallis brevipes*
ORCHIDACEAE



158 *Anathallis brevipes*
ORCHIDACEAE



159 *Anathallis obovata*
ORCHIDACEAE



160 *Anathallis obovata*
ORCHIDACEAE

VASCULAR EPIPHYTES of HUE Mauá, Telêmaco Borba, Brazil

Greta Aline Dettke¹, Daiane dos Reis-Santos², Paulo de Tarso Sambugaro-Santos² & Maria Auxiliadora Milaneze-Gutierrez²

¹Universidade Tecnológica Federal do Paraná (UTFPR – Campo Mourão, Brazil), ²Universidade Estadual do Paraná (UEM – Maringá, Brazil).
Photos by: D. Reis-Santos, P.T. Sambugaro-Santos & M.A. Milaneze-Gutierrez, except where indicated. Produced by: G.A. Dettke.

© M.A. Milaneze-Gutierrez [milaneze@uem.br]

[fieldguides.fieldmuseum.org]

[894] version 1

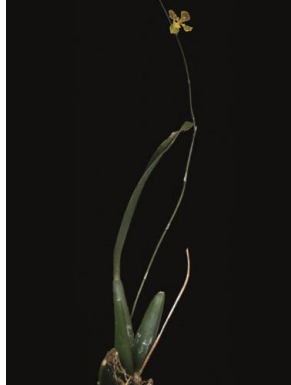
1/2018



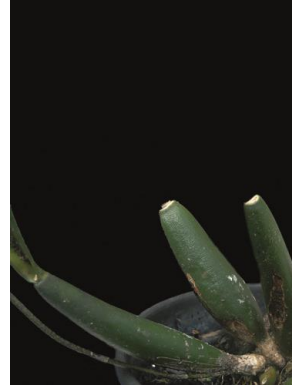
161 *Anathallis obovata*
ORCHIDACEAE



162 *Anathallis obovata*
ORCHIDACEAE



163 *Baptistonia cornigera*
ORCHIDACEAE



164 *Baptistonia cornigera*
ORCHIDACEAE



165 *Baptistonia cornigera*
ORCHIDACEAE



166 *Baptistonia pubes*
ORCHIDACEAE



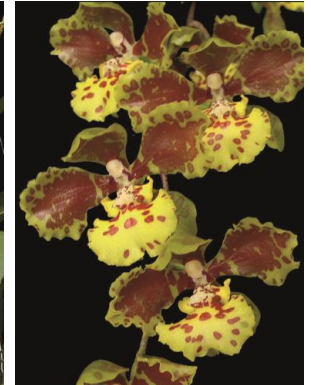
167 *Baptistonia pubes*
ORCHIDACEAE



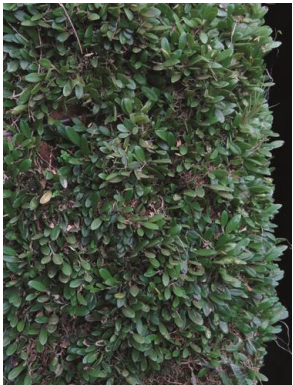
168 *Baptistonia pubes*
ORCHIDACEAE



169 *Baptistonia sarcodes*
ORCHIDACEAE



170 *Baptistonia sarcodes*
ORCHIDACEAE



171 *Barbosella cogniauxiana*
ORCHIDACEAE



172 *Barbosella cogniauxiana*
ORCHIDACEAE



173 *Barbosella cogniauxiana*
ORCHIDACEAE



174 *Barbosella cogniauxiana*
ORCHIDACEAE



175 *Barbosella cogniauxiana*
ORCHIDACEAE



176 *Brasiliorchis chrysantha*
ORCHIDACEAE



177 *Brasiliorchis chrysantha*
ORCHIDACEAE



178 *Brasiliorchis chrysantha*
ORCHIDACEAE



179 *Brasiliorchis chrysantha*
ORCHIDACEAE



180 *Brasiliorchis chrysantha*
ORCHIDACEAE

VASCULAR EPIPHYTES of HUE Mauá, Telêmaco Borba, Brazil

Greta Aline Dettke¹, Daiane dos Reis-Santos², Paulo de Tarso Sambugaro-Santos² & Maria Auxiliadora Milaneze-Gutierrez²

¹Universidade Tecnológica Federal do Paraná (UTFPR – Campo Mourão, Brazil), ²Universidade Estadual do Paraná (UEM – Maringá, Brazil).

Photos by: D. Reis-Santos, P.T. Sambugaro-Santos & M.A. Milaneze-Gutierrez, except where indicated. Produced by: G.A. Dettke.

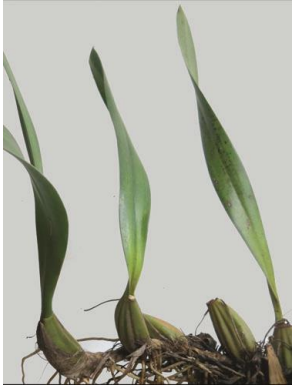
© M.A. Milaneze-Gutierrez [milaneze@uem.br]

[fieldguides.fieldmuseum.org]

[894]

version 1

1/2018



181 *Brasiliorchis consanguinea*
ORCHIDACEAE



182 *Brasiliorchis consanguinea*
ORCHIDACEAE



183 *Brasiliorchis consanguinea*
ORCHIDACEAE



184 *Brassavola tuberculata*
ORCHIDACEAE



185 *Brassavola tuberculata*
ORCHIDACEAE



186 *Brassavola tuberculata*
ORCHIDACEAE



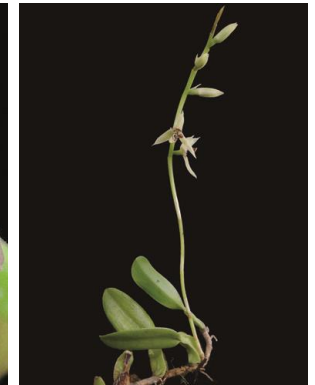
187 *Bulbophyllum perii*
ORCHIDACEAE



188 *Bulbophyllum perii*
ORCHIDACEAE



189 *Bulbophyllum perii*
ORCHIDACEAE



190 *Bulbophyllum tripetalum*
ORCHIDACEAE



191 *Bulbophyllum tripetalum*
ORCHIDACEAE



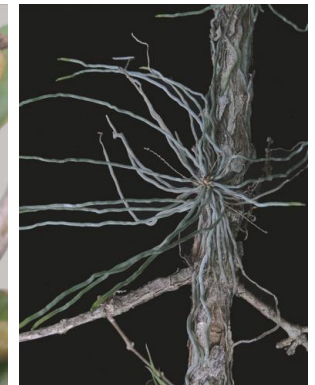
192 *Campylocentrum aromaticum*
ORCHIDACEAE



193 *Campylocentrum aromaticum*
ORCHIDACEAE



194 *Campylocentrum aromaticum*
ORCHIDACEAE



195 *Campylocentrum grisebachii*
ORCHIDACEAE



196 *Campylocentrum grisebachii*
ORCHIDACEAE



197 *Campylocentrum grisebachii*
ORCHIDACEAE



198 *Capanemia gehrtii*
ORCHIDACEAE



199 *Capanemia gehrtii*
ORCHIDACEAE



200 *Capanemia micromera*
ORCHIDACEAE

VASCULAR EPIPHYTES of HUE Mauá, Telêmaco Borba, Brazil

Greta Aline Dettke¹, Daiane dos Reis-Santos², Paulo de Tarso Sambugaro-Santos² & Maria Auxiliadora Milaneze-Gutierrez²

¹Universidade Tecnológica Federal do Paraná (UTFPR – Campo Mourão, Brazil), ²Universidade Estadual do Paraná (UEM – Maringá, Brazil). Photos by:

D. Reis-Santos, P.T. Sambugaro-Santos & M.A. Milaneze-Gutierrez, except where indicated. Produced by: G.A. Dettke.

© M.A. Milaneze-Gutierrez [milaneze@uem.br]

[fieldguides.fieldmuseum.org]

[894] version 1 1/2018



201 *Capanemia micromera*
ORCHIDACEAE



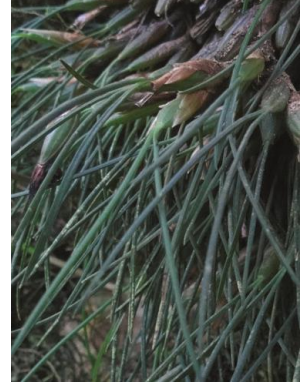
202 *Capanemia micromera*
ORCHIDACEAE



203 *Capanemia superflua*
ORCHIDACEAE



204 *Capanemia superflua*
ORCHIDACEAE



205 *Christensonella paranaensis*
ORCHIDACEAE



206 *Christensonella paranaensis*
ORCHIDACEAE



207 *Christensonella paranaensis*
ORCHIDACEAE



208 *Christensonella paranaensis*
ORCHIDACEAE



209 *Christensonella paranaensis*
ORCHIDACEAE



210 *Christensonella vernicosa*
ORCHIDACEAE



211 *Christensonella vernicosa*
ORCHIDACEAE



212 *Christensonella vernicosa*
ORCHIDACEAE



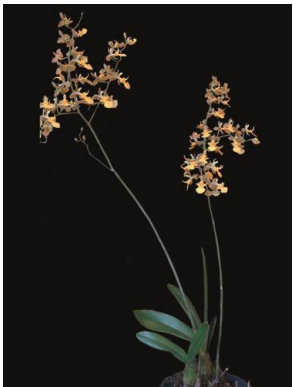
213 *Coppensia flexuosa*
ORCHIDACEAE



214 *Coppensia flexuosa*
ORCHIDACEAE



215 *Coppensia flexuosa*
ORCHIDACEAE



216 *Coppensia longicornu*
ORCHIDACEAE



217 *Coppensia longicornu*
ORCHIDACEAE



218 *Coppensia longicornu*
ORCHIDACEAE



219 *Cyclopogon congestus*
ORCHIDACEAE



220 *Cyclopogon congestus*
ORCHIDACEAE

VASCULAR EPIPHYTES of HUE Mauá, Telêmaco Borba, Brazil

Greta Aline Dettke¹, Daiane dos Reis-Santos², Paulo de Tarso Sambugaro-Santos² & Maria Auxiliadora Milaneze-Gutierrez²

¹Universidade Tecnológica Federal do Paraná (UTFPR – Campo Mourão, Brazil), ²Universidade Estadual do Paraná (UEM – Maringá, Brazil).

Photos by: D. Reis-Santos, P.T. Sambugaro-Santos & M.A. Milaneze-Gutierrez, except where indicated. Produced by: G.A. Dettke.

© M.A. Milaneze-Gutierrez [milaneze@uem.br]

[fieldguides.fieldmuseum.org]

[894] version 1 1/2018



221 *Cyclopogon congestus*
ORCHIDACEAE



222 *Cyclopogon congestus*
ORCHIDACEAE



223 *Encyclia patens*
ORCHIDACEAE



224 *Encyclia patens*
ORCHIDACEAE



225 *Encyclia patens*
ORCHIDACEAE



226 *Encyclia patens*
ORCHIDACEAE



227 *Encyclia patens*
ORCHIDACEAE



228 *Epidendrum densiflorum*
ORCHIDACEAE



229 *Epidendrum densiflorum*
ORCHIDACEAE



230 *Epidendrum densiflorum*
ORCHIDACEAE



231 *Epidendrum densiflorum*
ORCHIDACEAE



232 *Epidendrum henschenii*
ORCHIDACEAE



233 *Epidendrum henschenii*
ORCHIDACEAE



234 *Epidendrum henschenii*
ORCHIDACEAE



235 *Epidendrum pseudodiforme*
ORCHIDACEAE



236 *Epidendrum pseudodiforme*
ORCHIDACEAE



237 *Epidendrum pseudodiforme*
ORCHIDACEAE



238 *Epidendrum rigidum*
ORCHIDACEAE



239 *Epidendrum rigidum*
ORCHIDACEAE



240 *Epidendrum rigidum*
ORCHIDACEAE

VASCULAR EPIPHYTES of HUE Mauá, Telêmaco Borba, Brazil

Greta Aline Dettke¹, Daiane dos Reis-Santos², Paulo de Tarso Sambugaro-Santos² & Maria Auxiliadora Milaneze-Gutierrez²

¹Universidade Tecnológica Federal do Paraná (UTFPR – Campo Mourão, Brazil), ²Universidade Estadual do Paraná (UEM – Maringá, Brazil).

Photos by: D. Reis-Santos, P.T. Sambugaro-Santos & M.A. Milaneze-Gutierrez, except where indicated. Produced by: G.A. Dettke.

© M.A. Milaneze-Gutierrez [milaneze@uem.br]

[fieldguides.fieldmuseum.org]

[894] version 1 1/2018



241 *Eurystyles actinosophila*
ORCHIDACEAE



242 *Eurystyles actinosophila*
ORCHIDACEAE



243 *Gomesa recurva*
ORCHIDACEAE



244 *Gomesa recurva*
ORCHIDACEAE



245 *Gomesa recurva*
ORCHIDACEAE



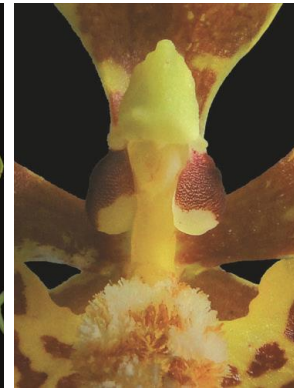
246 *Gomesa recurva*
ORCHIDACEAE



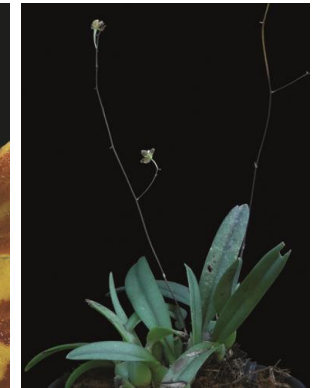
247 *Grandiphyllum divaricatum*
ORCHIDACEAE



248 *Grandiphyllum divaricatum*
ORCHIDACEAE



249 *Grandiphyllum divaricatum*
ORCHIDACEAE



250 *Grandiphyllum hians*
ORCHIDACEAE



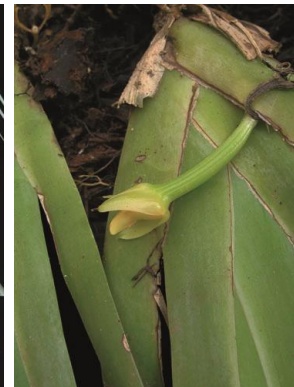
251 *Grandiphyllum hians*
ORCHIDACEAE



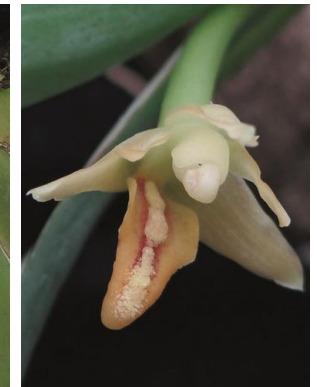
252 *Grandiphyllum hians*
ORCHIDACEAE



253 *Heterotaxis valenzuelana*
ORCHIDACEAE



254 *Heterotaxis valenzuelana*
ORCHIDACEAE



255 *Heterotaxis valenzuelana*
ORCHIDACEAE



256 *Heterotaxis valenzuelana*
ORCHIDACEAE



257 *Isabelia virginalis*
ORCHIDACEAE



258 *Isabelia virginalis*
ORCHIDACEAE



259 *Isabelia virginalis*
ORCHIDACEAE



260 *Isabelia virginalis*
ORCHIDACEAE

VASCULAR EPIPHYTES of HUE Mauá, Telêmaco Borba, Brazil

Greta Aline Dettke¹, Daiane dos Reis-Santos², Paulo de Tarso Sambugaro-Santos² & Maria Auxiliadora Milaneze-Gutierrez²

¹Universidade Tecnológica Federal do Paraná (UTFPR – Campo Mourão, Brazil), ²Universidade Estadual do Paraná (UEM – Maringá, Brazil).

Photos by: D. Reis-Santos, P.T. Sambugaro-Santos & M.A. Milaneze-Gutierrez, except where indicated. Produced by: G.A. Dettke.

© M.A. Milaneze-Gutierrez [milaneze@uem.br]

[fieldguides.fieldmuseum.org]

[894] version 1 1/2018



261 *Isochilus linearis*
ORCHIDACEAE



262 *Isochilus linearis*
ORCHIDACEAE



263 *Isochilus linearis*
ORCHIDACEAE



264 *Isochilus linearis*
ORCHIDACEAE



265 *Isochilus linearis*
ORCHIDACEAE



266 *Leptotes bicolor*
ORCHIDACEAE



267 *Leptotes bicolor*
ORCHIDACEAE



268 *Leptotes unicolor*
ORCHIDACEAE



269 *Leptotes unicolor*
ORCHIDACEAE



270 *Leptotes unicolor*
ORCHIDACEAE



271 *Lophiaris pumila*
ORCHIDACEAE



272 *Lophiaris pumila*
ORCHIDACEAE



273 *Lophiaris pumila*
ORCHIDACEAE



274 *Lophiaris pumila*
ORCHIDACEAE



275 *Miltonia flavescens*
ORCHIDACEAE



276 *Miltonia flavescens*
ORCHIDACEAE



277 *Miltonia flavescens*
ORCHIDACEAE



278 *Miltonia regnellii*
ORCHIDACEAE



279 *Miltonia regnellii*
ORCHIDACEAE



280 *Miltonia regnellii*
ORCHIDACEAE

VASCULAR EPIPHYTES of HUE Mauá, Telêmaco Borba, Brazil

Greta Aline Dettke¹, Daiane dos Reis-Santos², Paulo de Tarso Sambugaro-Santos² & Maria Auxiliadora Milaneze-Gutierrez²

¹Universidade Tecnológica Federal do Paraná (UTFPR – Campo Mourão, Brazil), ²Universidade Estadual do Paraná (UEM – Maringá, Brazil).

Photos by: D. Reis-Santos, P.T. Sambugaro-Santos & M.A. Milaneze-Gutierrez, except where indicated. Produced by: G.A. Dettke.

© M.A. Milaneze-Gutierrez [milaneze@uem.br]

[fieldguides.fieldmuseum.org]

[894] version 1 1/2018



281 *Octomeria micrantha*
ORCHIDACEAE



282 *Octomeria micrantha*
ORCHIDACEAE



283 *Octomeria micrantha*
ORCHIDACEAE



284 *Ornithophora radicans*
ORCHIDACEAE



285 *Ornithophora radicans*
ORCHIDACEAE



286 *Pabstiella hians*
ORCHIDACEAE



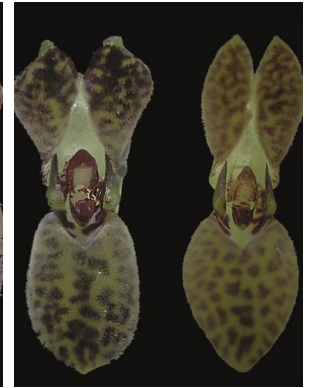
287 *Pabstiella hians*
ORCHIDACEAE



288 *Pabstiella hians*
ORCHIDACEAE



289 *Pabstiella hians*
ORCHIDACEAE



290 *Pabstiella hians*
ORCHIDACEAE



291 *Pabstiella hians*
ORCHIDACEAE



292 *Pabstiella hians*
ORCHIDACEAE



293 *Pabstiella matinhensis*
ORCHIDACEAE



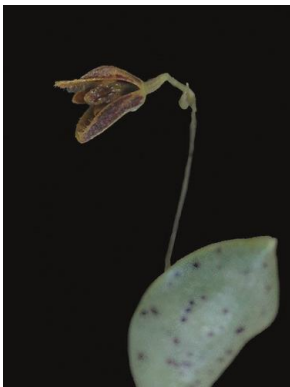
294 *Pabstiella matinhensis*
ORCHIDACEAE



295 *Pabstiella matinhensis*
ORCHIDACEAE



296 *Pabstiella sordida*
ORCHIDACEAE



297 *Pabstiella sordida*
ORCHIDACEAE



298 *Pabstiella tripterantha*
ORCHIDACEAE



299 *Pabstiella tripterantha*
ORCHIDACEAE



300 *Pabstiella tripterantha*
ORCHIDACEAE

VASCULAR EPIPHYTES of HUE Mauá, Telêmaco Borba, Brazil

Greta Aline Dettke¹, Daiane dos Reis-Santos², Paulo de Tarso Sambugaro-Santos² & Maria Auxiliadora Milaneze-Gutierrez²

¹Universidade Tecnológica Federal do Paraná (UTFPR – Campo Mourão, Brazil), ²Universidade Estadual do Paraná (UEM – Maringá, Brazil). Photos by: D. Reis-Santos, P.T. Sambugaro-Santos & M.A. Milaneze-Gutierrez, except where indicated. Produced by: G.A. Dettke.

© M.A. Milaneze-Gutierrez [milaneze@uem.br]

[fieldguides.fieldmuseum.org]

[894]

version 1 1/2018



301 *Pabstiella tripterantha*
ORCHIDACEAE



302 *Phymatidium delicatulum*
ORCHIDACEAE



303 *Phymatidium delicatulum*
ORCHIDACEAE



304 *Phymatidium delicatulum*
ORCHIDACEAE



305 *Polystachya estrellensis*
ORCHIDACEAE



306 *Polystachya estrellensis*
ORCHIDACEAE



307 *Polystachya estrellensis*
ORCHIDACEAE



308 *Polystachya estrellensis*
ORCHIDACEAE



309 *Polystachya foliosa*
ORCHIDACEAE



310 *Polystachya foliosa*
ORCHIDACEAE



311 *Rodriguezia decora*
ORCHIDACEAE



312 *Rodriguezia decora*
ORCHIDACEAE



313 *Sophronitis cernua*
ORCHIDACEAE



314 *Sophronitis cernua*
ORCHIDACEAE



315 *Sophronitis cernua*
ORCHIDACEAE



316 *Specklinia grobyi*
ORCHIDACEAE



317 *Specklinia grobyi*
ORCHIDACEAE



318 *Specklinia grobyi*
ORCHIDACEAE



319 *Specklinia grobyi*
ORCHIDACEAE



320 *Specklinia grobyi*
ORCHIDACEAE

VASCULAR EPIPHYTES of HUE Mauá, Telêmaco Borba, Brazil

Greta Aline Dettke¹, Daiane dos Reis-Santos², Paulo de Tarso Sambugaro-Santos² & Maria Auxiliadora Milaneze-Gutierrez²

¹Universidade Tecnológica Federal do Paraná (UTFPR – Campo Mourão, Brazil), ²Universidade Estadual do Paraná (UEM – Maringá, Brazil). Photos by: D. Reis-Santos, P.T. Sambugaro-Santos & M.A. Milaneze-Gutierrez, except where indicated. Produced by: G.A. Dettke.

© M.A. Milaneze-Gutierrez [milaneze@uem.br]

[fieldguides.fieldmuseum.org]

[894]

version 1

1/2018



321 *Stanhopea lietzei*
ORCHIDACEAE



322 *Stanhopea lietzei*
ORCHIDACEAE



323 *Stanhopea lietzei*
ORCHIDACEAE



324 *Stanhopea lietzei*
ORCHIDACEAE



325 *Stelis papaquerensis*
ORCHIDACEAE



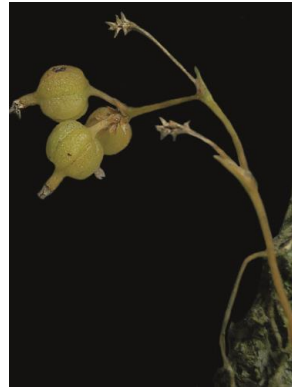
326 *Stelis papaquerensis*
ORCHIDACEAE



327 *Trizeuxis falcata*
ORCHIDACEAE



328 *Trizeuxis falcata*
ORCHIDACEAE



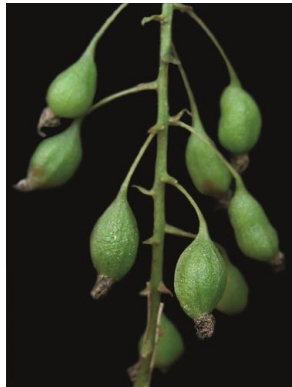
329 *Trizeuxis falcata*
ORCHIDACEAE



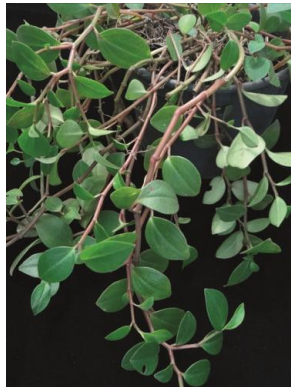
330 *Zygostates lunata*
ORCHIDACEAE



331 *Zygostates lunata*
ORCHIDACEAE



332 *Zygostates lunata*
ORCHIDACEAE



333 *Peperomia glabrella*
PIPERACEAE



334 *Peperomia glabrella*
PIPERACEAE



335 *Peperomia hydrocotyloides*
var. *setosa* PIPERACEAE



336 *Peperomia hydrocotyloides*
var. *setosa* PIPERACEAE



337 *Peperomia martiana*
PIPERACEAE



338 *Peperomia martiana*
PIPERACEAE



339 *Peperomia nitida*
PIPERACEAE



340 *Peperomia nitida*
PIPERACEAE

VASCULAR EPIPHYTES of HUE Mauá, Telêmaco Borba, Brazil

Greta Aline Dettke¹, Daiane dos Reis-Santos², Paulo de Tarso Sambugaro-Santos² & Maria Auxiliadora Milaneze-Gutierrez²

¹Universidade Tecnológica Federal do Paraná (UTFPR – Campo Mourão, Brazil), ²Universidade Estadual do Paraná (UEM – Maringá, Brazil).

Photos by: D. Reis-Santos, P.T. Sambugaro-Santos & M.A. Milaneze-Gutierrez, except where indicated. Produced by: G.A. Dettke.

© M.A. Milaneze-Gutierrez [milaneze@uem.br]

[fieldguides.fieldmuseum.org]

[894] version 1 1/2018



341 *Peperomia nitida*
PIPERACEAE



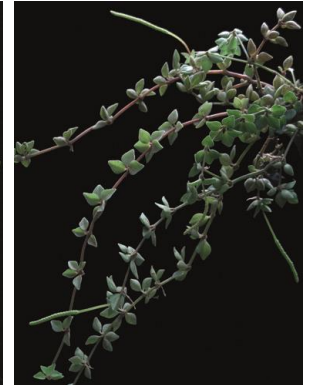
342 *Peperomia pereskiaefolia*
PIPERACEAE



343 *Peperomia pereskiaefolia*
PIPERACEAE



344 *Peperomia pereskiaefolia*
PIPERACEAE



345 *Peperomia psilostachya*
PIPERACEAE



346 *Peperomia psilostachya*
PIPERACEAE



347 *Peperomia psilostachya*
PIPERACEAE



348 *Peperomia quadrifolia*
PIPERACEAE



349 *Peperomia quadrifolia*
PIPERACEAE



350 *Peperomia rhombea*
PIPERACEAE



351 *Peperomia rhombea*
PIPERACEAE



352 *Peperomia rotundifolia*
PIPERACEAE



353 *Peperomia rotundifolia*
PIPERACEAE



354 *Peperomia rotundifolia*
PIPERACEAE



355 *Peperomia stroemfeltii*
PIPERACEAE



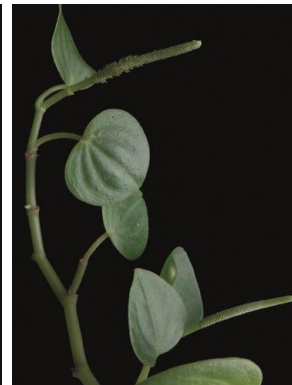
356 *Peperomia stroemfeltii*
PIPERACEAE



357 *Peperomia tetraphylla*
PIPERACEAE



358 *Peperomia tetraphylla*
PIPERACEAE



359 *Peperomia urocarpa*
PIPERACEAE



360 *Peperomia urocarpa*
PIPERACEAE

VASCULAR EPIPHYTES of HUE Mauá, Telêmaco Borba, Brazil

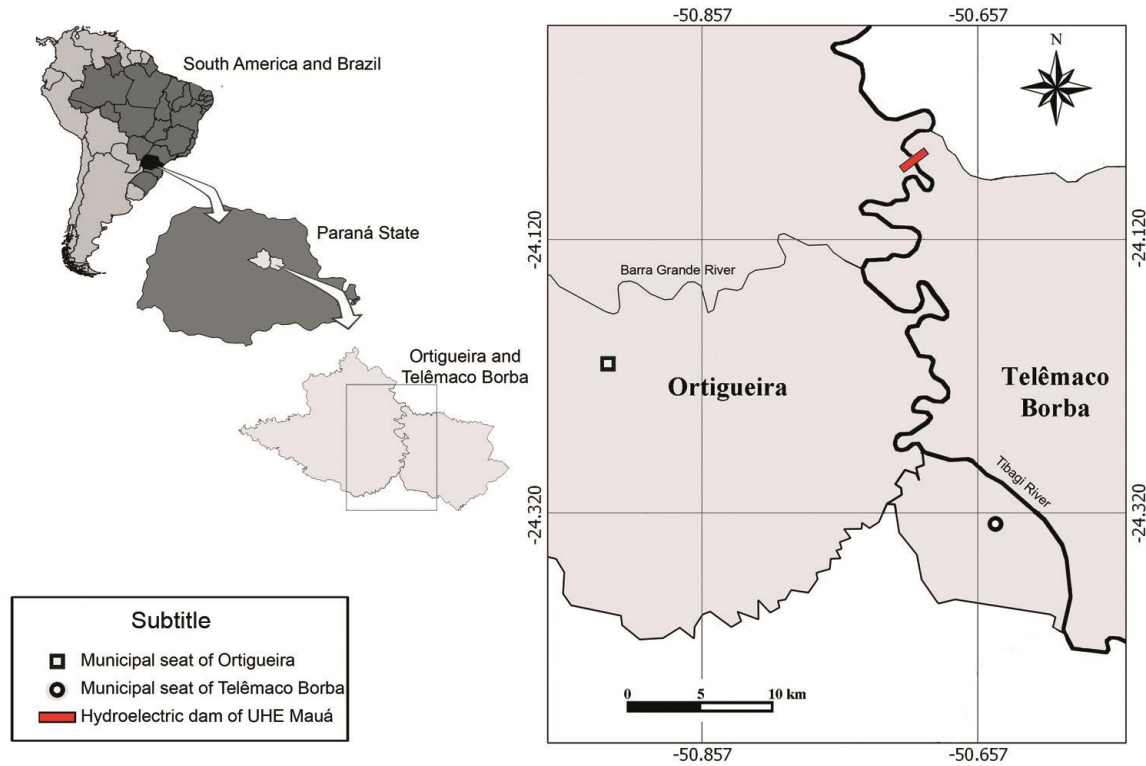
Greta Aline Dettke¹, Daiane dos Reis-Santos², Paulo de Tarso Sambugaro-Santos² & Maria Auxiliadora Milaneze-Gutierrez²

¹Universidade Tecnológica Federal do Paraná (UTFPR – Campo Mourão, Brazil), ²Universidade Estadual do Paraná (UEM – Maringá, Brazil).
Photos by: D. Reis-Santos, P.T. Sambugaro-Santos & M.A. Milaneze-Gutierrez, except where indicated. Produced by: G.A. Dettke.

© M.A. Milaneze-Gutierrez [milaneze@uem.br]

[fieldguides.fieldmuseum.org]

[894] version 1 1/2018



361 Location of study site.

362 Emergent tree with epiphytic plants.



363 HUE Mauá, Telêmaco Borba, Paraná state, Brazil (50°42'W, 24°04'S), vegetation before the construction of the hydroelectric dam.