

Reserva Geobotánica Pululahua, Pichincha, ECUADOR

Common Pollen Grains of Chaupisacha, Pondoña y Moraspungo

Karla Valdivieso Bermeo & Jorge Brito

Instituto Nacional de Biodiversidad, Quito-Ecuador, Instituto de Ciencias Biológicas, Escuela Politécnica Nacional, Quito

Support: Pacific Lutheran University: Earth Deeds Carbon Mitigation Initiative. Photos by Karla Valdivieso Bermeo y Jorge Brito M.

© Karla Valdivieso Bermeo. [kae_valdivieso@outlook.com], Jorge Brito M. [jorgeyakuma@yahoo.es]. Produced by: Juliana Philipp & Karla Valdivieso.

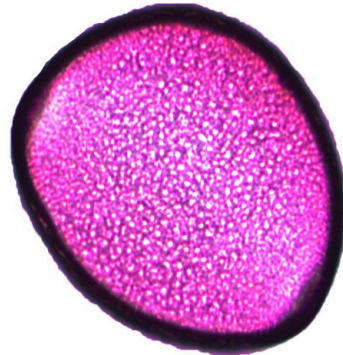
fieldguides.fieldmuseum.org [987] version 1 3/2018



1 *Bomarea multiflora*
ALSTROEMERIACEAE



2 *Bomarea multiflora*
ALSTROEMERIACEAE



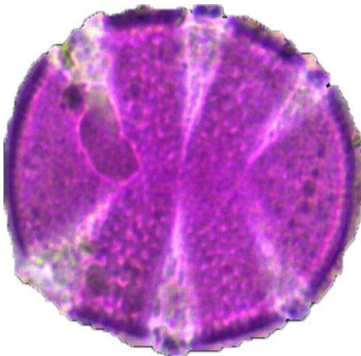
3 *Bomarea multiflora*
ALSTROEMERIACEAE
= 224.42 μm



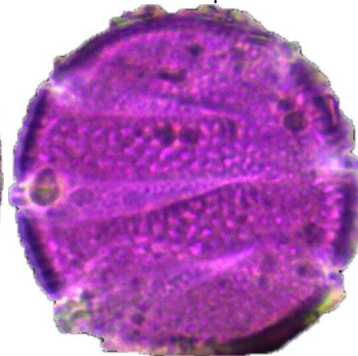
4 *Bomarea multiflora*
ALSTROEMERIACEAE



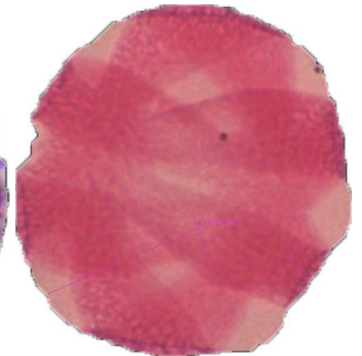
5 *Barnadesia arborea*
ASTERACEAE



6 *Barnadesia arborea*
ASTERACEAE



7 *Barnadesia arborea*
ASTERACEAE = 220.11 μm



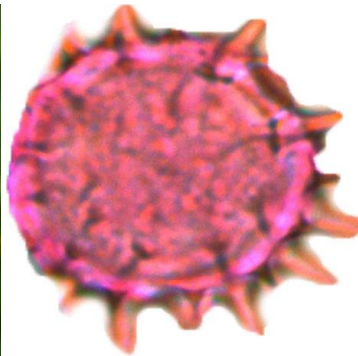
8 *Barnadesia arborea*
ASTERACEAE



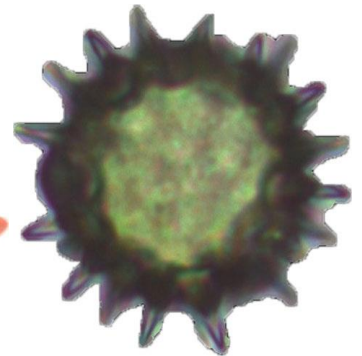
9 *Bidens andicola*
ASTERACEAE



10 *Bidens andicola*
ASTERACEAE



11 *Bidens andicola*
ASTERACEAE = 107.78 μm



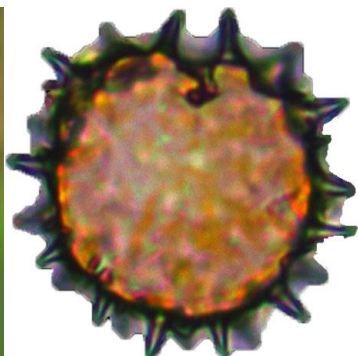
12 *Bidens andicola*
ASTERACEAE



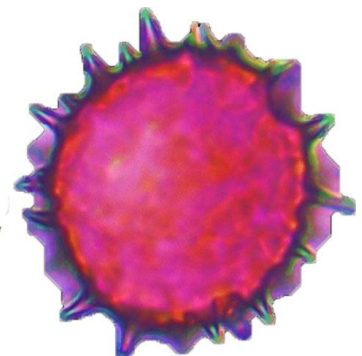
13 *Bidens pilosa*
ASTERACEAE



14 *Bidens pilosa*
ASTERACEAE



15 *Bidens pilosa*
ASTERACEAE = 124.5 μm



16 *Bidens pilosa*
ASTERACEAE

Reserva Geobotánica Pululahua, Pichincha, ECUADOR

Common Pollen Grains of Chaupisacha, Pondoña y Moraspungo

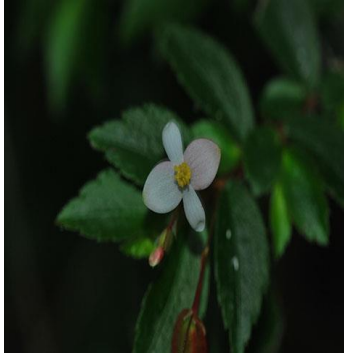
Karla Valdivieso Bermeo & Jorge Brito

Instituto Nacional de Biodiversidad, Quito-Ecuador, Instituto de Ciencias Biológicas, Escuela Politécnica Nacional, Quito

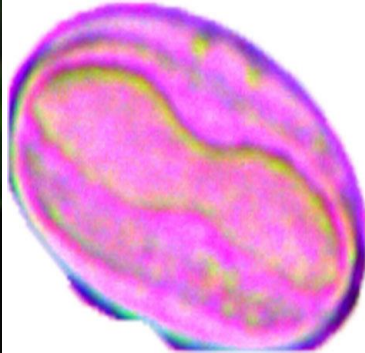
Support: Pacific Lutheran University: Earth Deeds Carbon Mitigation Initiative. Photos: Karla Valdivieso Bermeo & Jorge Brito M.

© Karla Valdivieso Bermeo. [kae_valdivieso@outlook.com], Jorge Brito M. [jorgeyakuma@yahoo.es]. Produced by: Juliana Philipp & Karla Valdivieso.

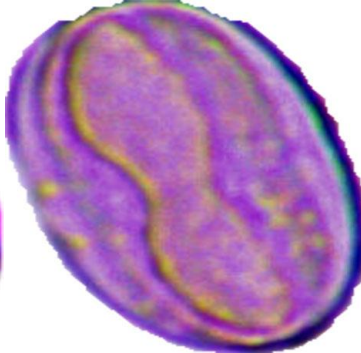
fieldguides.fieldmuseum.org [987] versión 1 3/2018



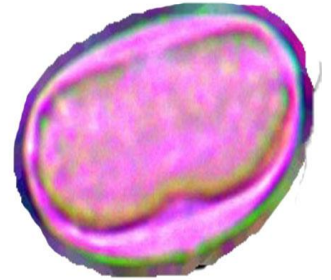
17 *Begonia pululahuana*
BEGONIACEAE



18 *Begonia pululahuana*
BEGONIACEAE



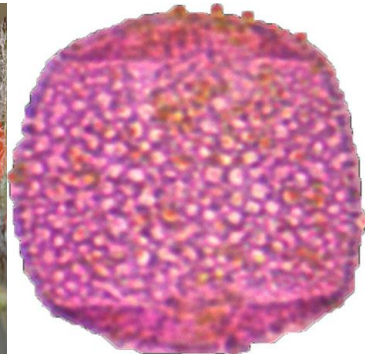
19 *Begonia pululahuana*
BEGONIACEAE=242 μm



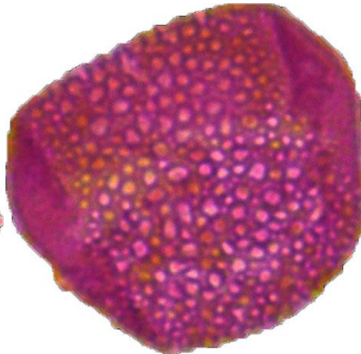
20 *Begonia pululahuana*
BEGONIACEAE



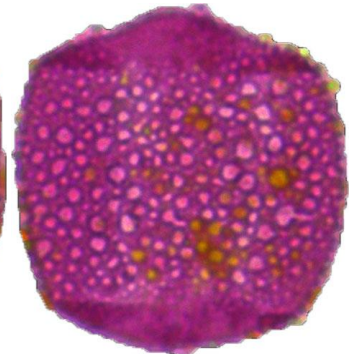
21 *Pitcairnia pungens*
BROMELIACEAE



22 *Pitcairnia pungens*
BROMELIACEAE



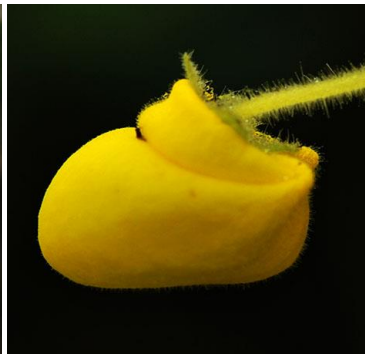
23 *Pitcairnia pungens*
BROMELIACEAE = 126.6 μm



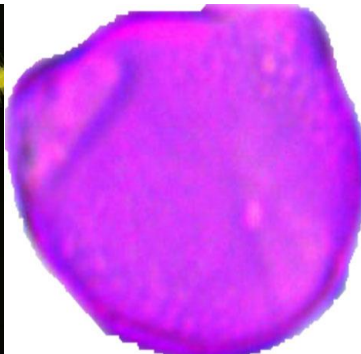
24 *Pitcairnia pungens*
BROMELIACEAE



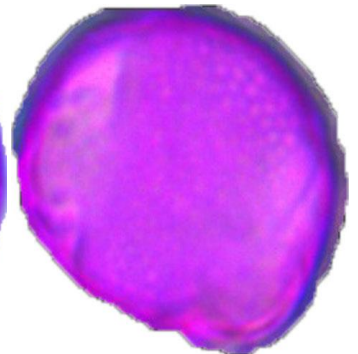
25 *Calceolaria crenata*
CALCEOLARIACEAE



26 *Calceolaria crenata*
CALCEOLARIACEAE



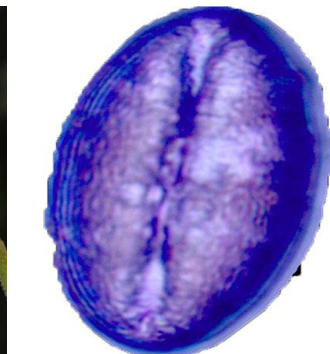
27 *Calceolaria crenata*
CALCEOLARIACEAE 80.38 μm



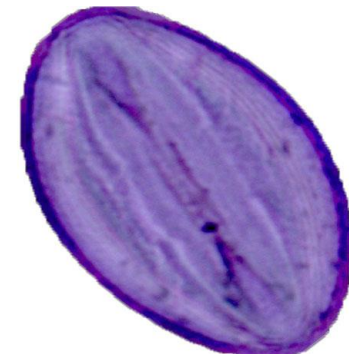
28 *Calceolaria crenata*
CALCEOLARIACEAE



29 *Siphocampylus giganteus*
CAMPANULACEAE



30 *Siphocampylus giganteus*
CAMPANULACEAE



31 *Siphocampylus giganteus*
CAMPANULACEAE =154.24μm



32 *Siphocampylus giganteus*
CAMPANULACEAE

Reserva Geobotánica Pululahua, Pichincha, ECUADOR

Common Pollen Grains of Chaupisacha, Pondoña y Moraspungo

Karla Valdivieso Bermeo & Jorge Brito

Instituto Nacional de Biodiversidad, Quito-Ecuador, Instituto de Ciencias Biológicas, Escuela Politécnica Nacional, Quito

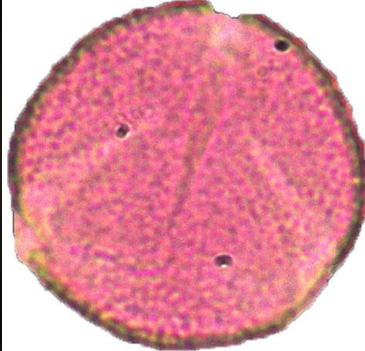
Support: Pacific Lutheran University: Earth Deeds Carbon Mitigation Initiative. Photos: Karla Valdivieso Bermeo y Jorge Brito M.

© Karla Valdivieso Bermeo. [kae_valdivieso@outlook.com], Jorge Brito M. [jorgeyakuma@yahoo.es]. Produced by: Juliana Philipp & Karla Valdivieso.

fieldguides.fieldmuseum.org [987] version 1 3/2018



33 *Columellia oblonga*
COLUMELLIACEAE



34 *Columellia oblonga*
COLUMELLIACEAE



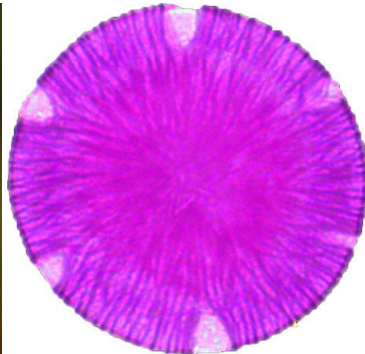
35 *Columellia oblonga*
COLUMELLIACEAE = 137.23µm



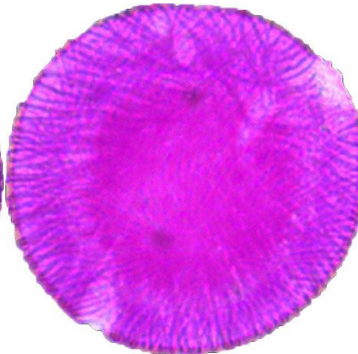
36 *Columellia oblonga*
COLUMELLIACEAE



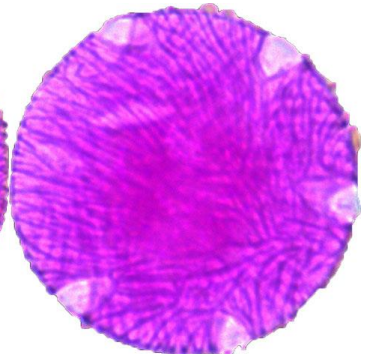
37 *Elasis hirsuta*
COMMELINACEAE



38 *Elasis hirsuta*
COMMELINACEAE



39 *Elasis hirsuta*
COMMELINACEAE = 235.35µm



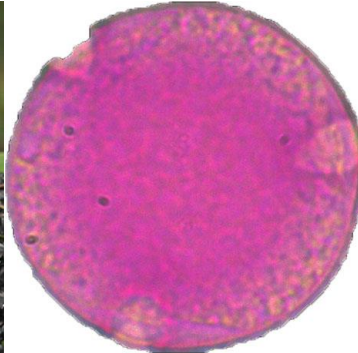
40 *Elasis hirsuta*
COMMELINACEAE



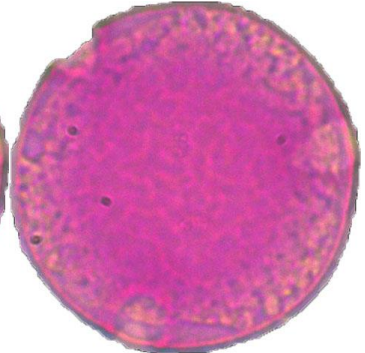
41 *Coriaria ruscifolia*
CORIARIACEAE



42 *Coriaria ruscifolia*
CORIARIACEAE



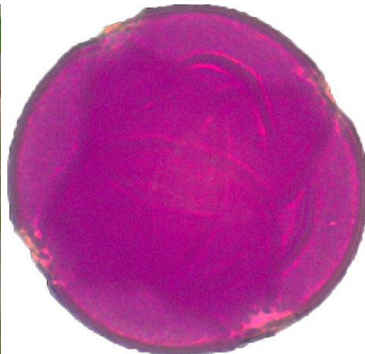
43 *Coriaria ruscifolia*
CORIARIACEAE = 152.36 µm



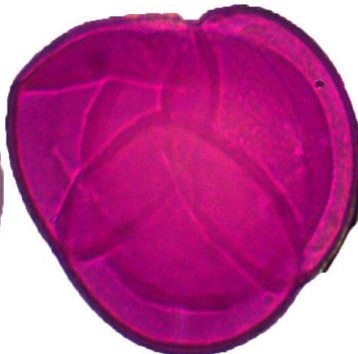
44 *Coriaria ruscifolia*
CORIARIACEAE



45 *Cavendishia bracteata*
ERICACEAE



46 *Cavendishia bracteata*
ERICACEAE



47 *Cavendishia bracteata*
ERICACEAE = 192.96 µm



48 *Cavendishia bracteata*
ERICACEAE

Reserva Geobotánica Pululahua, Pichincha, ECUADOR

Common Pollen Grains of Chaupisacha, Pondoña y Moraspungo

Karla Valdivieso Bermeo & Jorge Brito

Instituto Nacional de Biodiversidad, Quito-Ecuador, Instituto de Ciencias Biológicas, Escuela Politécnica Nacional, Quito

Support: Pacific Lutheran University: Earth Deeds Carbon Mitigation Initiative. Photos: Karla Valdivieso Bermeo & Jorge Brito M.

© Karla Valdivieso Bermeo. [kae_valdivieso@outlook.com], Jorge Brito M. [jorgeyakuma@yahoo.es]. Produced by: Juliana Philipp & Karla Valsivieso.

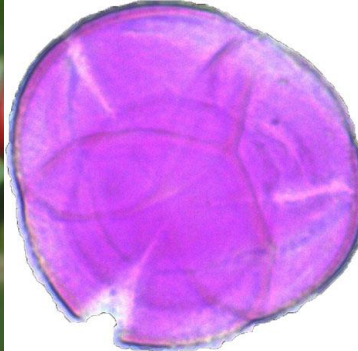
fieldguides.fieldmuseum.org [1987] versión 1 3/2018



49 *Pernettya prostrata*
ERICACEAE



50 *Pernettya prostrata*
ERICACEAE



51 *Pernettya prostrata*
ERICACEAE = 125.93



52 *Pernettya prostrata*
ERICACEAE



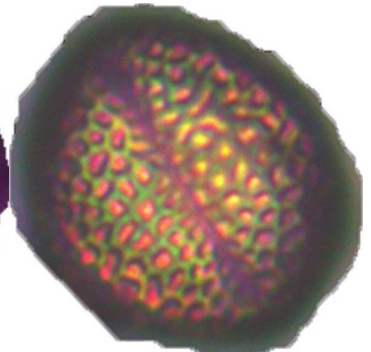
53 *Euphorbia graminea*
EUPHORBIACEAE



54 *Euphorbia graminea*
EUPHORBIACEAE



55 *Euphorbia graminea*
EUPHORBIACEAE = 254.81 μm



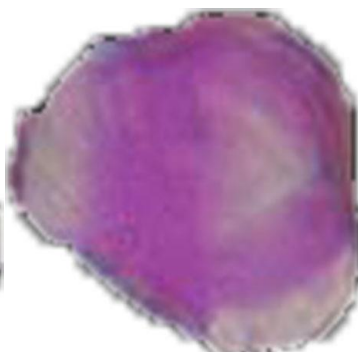
56 *Euphorbia graminea*
EUPHORBIACEAE



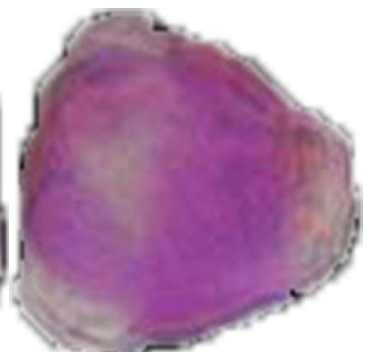
57 *Lupinus pubescens*
FABACEAE



58 *Lupinus pubescens*
FABACEAE



59 *Lupinus pubescens*
FABACEAE = 117.3 μm



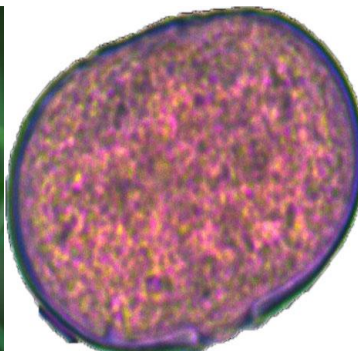
60 *Lupinus pubescens*
FABACEAE



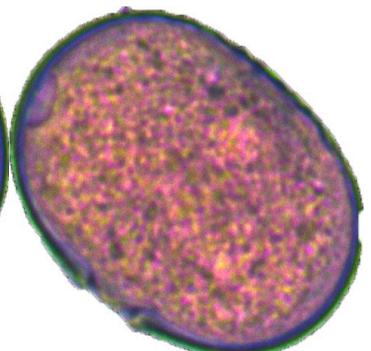
61 *Vicia andicola*
FABACEAE



62 *Vicia andicola*
FABACEAE



63 *Vicia andicola*
FABACEAE = 151.37 μm



64 *Vicia andicola*
FABACEAE

Reserva Geobotánica Pululahua, Pichincha, ECUADOR

Common Pollen Grains of Chaupisacha, Pondoña y Moraspungo

Karla Valdivieso Bermeo & Jorge Brito

Instituto Nacional de Biodiversidad, Quito-Ecuador, Instituto de Ciencias Biológicas, Escuela Politécnica Nacional, Quito

Support: Pacific Lutheran University: Earth Deeds Carbon Mitigation Initiative. Photos: Karla Valdivieso Bermeo & Jorge Brito M.

© Karla Valdivieso Bermeo. [kae_valdivieso@outlook.com], Jorge Brito M. [jorgeyakuma@yahoo.es]. Produced by: Juliana Philipp & Karla Valdivieso.

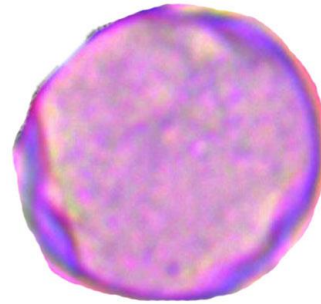
[fieldguides.fieldmuseum.org] [987] version 1 3/2018



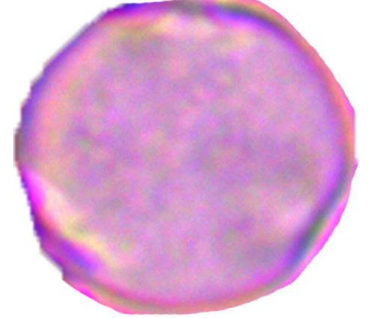
65 *Heppiella ulmifolia*
GESNERIACEAE



66 *Heppiella ulmifolia*
GESNERIACEAE



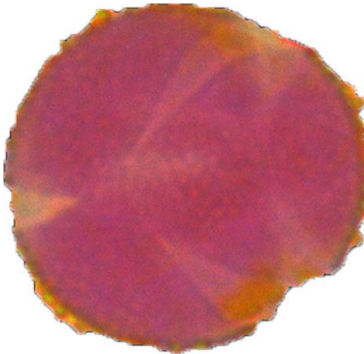
67 *Heppiella ulmifolia*
GESNERIACEAE = 67.5 µm



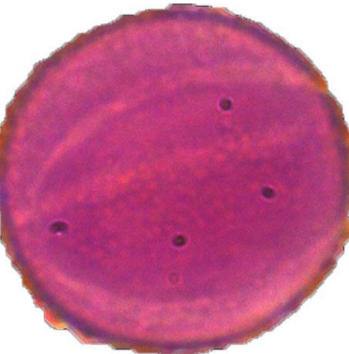
68 *Heppiella ulmifolia*
GESNERIACEAE



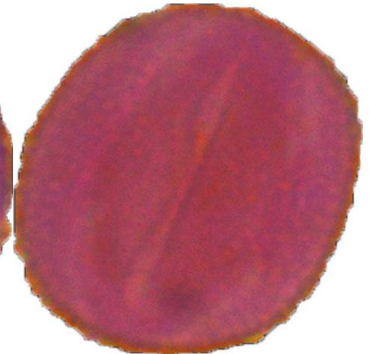
69 *Hypericum laricifolium*
HYPERICACEAE



71 *Hypericum laricifolium*
HYPERICACEAE



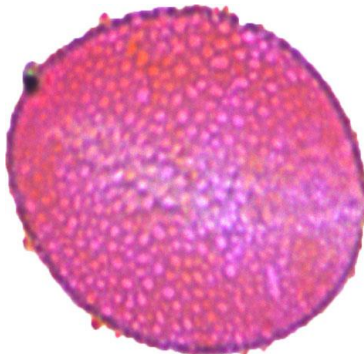
71 *Hypericum laricifolium*
HYPERICACEAE = 110.50 µm



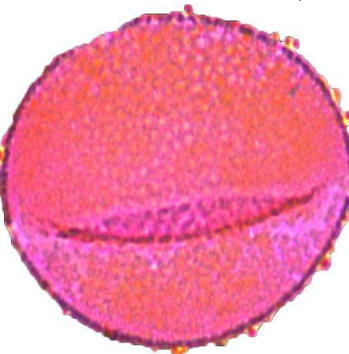
72 *Hypericum laricifolium*
HYPERICACEAE



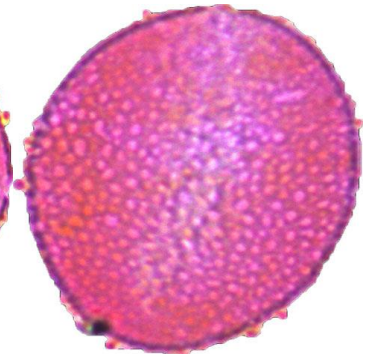
73 *Eleutherine bulbosa*
IRIDACEAE



74 *Eleutherine bulbosa*
IRIDACEAE



75 *Eleutherine bulbosa*
IRIDACEAE = 240.75 µm



76 *Eleutherine bulbosa*
IRIDACEAE



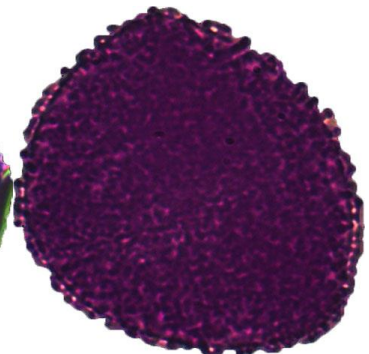
77 *Ennealophus foliosus*
IRIDACEAE



78 *Ennealophus foliosus*
IRIDACEAE



79 *Ennealophus foliosus*
IRIDACEAE = 206.97



80 *Ennealophus foliosus*
IRIDACEAE

Reserva Geobotánica Pululahua, Pichincha, ECUADOR

Common Pollen Grains of Chaupisacha, Pondoña y Moraspungo

Karla Valdivieso Bermeo & Jorge Brito

Instituto Nacional de Biodiversidad, Quito-Ecuador, Instituto de Ciencias Biológicas, Escuela Politécnica Nacional, Quito

Support: Pacific Lutheran University: Earth Deeds Carbon Mitigation Initiative. Photos: Karla Valdivieso Bermeo & Jorge Brito M.

© Karla Valdivieso Bermeo. [kae_valdivieso@outlook.com], Jorge Brito M. [jorgeyakuma@yahoo.es]. Produced by: Juliana Philipp & Karla Valsivieso.

fieldguides.fieldmuseum.org [987] versión 1 3/2018



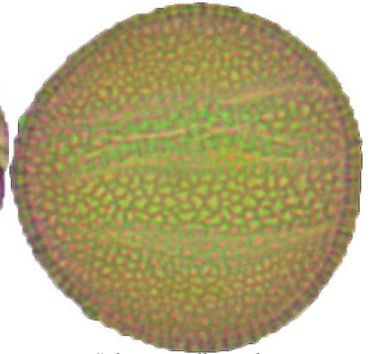
81 *Salvia scutellarioides*
LAMIACEAE



82 *Salvia scutellarioides*
LAMIACEAE



83 *Salvia scutellarioides*
LAMIACEAE = 157.16µm



84 *Salvia scutellarioides*
LAMIACEAE



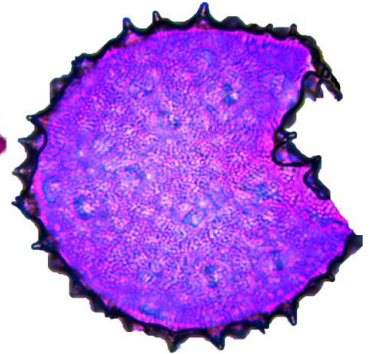
85 *Sida poeppigiana*
MALVACEAE



86 *Sida poeppigiana*
MALVACEAE



87 *Sida poeppigiana*
MALVACEAE = 154.24µm



88 *Sida poeppigiana*
MALVACEAE



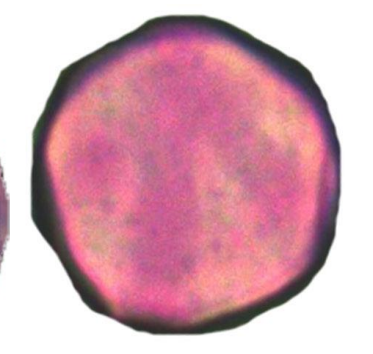
89 *Miconia crocea*
MELASTOMATACEAE



90 *Miconia crocea*
MELASTOMATACEAE



91 *Miconia crocea*
MELASTOMATACEAE = 96.54 µm



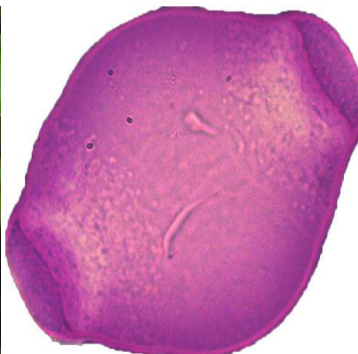
92 *Miconia crocea*
MELASTOMATACEAE = 96.54µm



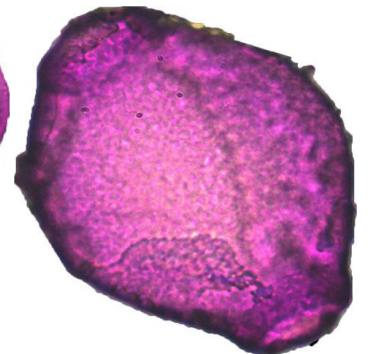
93 *Fuchsia cf. dependens*
ONAGRACEAE



94 *Fuchsia cf. dependens*
ONAGRACEAE



95 *Fuchsia cf. dependens*
ONAGRACEAE = 301.98µm



96 *Fuchsia cf. dependens*
ONAGRACEAE

Reserva Geobotánica Pululahua, Pichincha, ECUADOR

Common Pollen Grains of Chaupisacha, Pondoña y Moraspungo

Karla Valdivieso Bermeo & Jorge Brito

Instituto Nacional de Biodiversidad, Quito-Ecuador, Instituto de Ciencias Biológicas, Escuela Politécnica Nacional, Quito

Support: Pacific Lutheran University: Earth Deeds Carbon Mitigation Initiative. Photos: Karla Valdivieso Bermeo y Jorge Brito M.

© Karla Valdivieso Bermeo. [kae_valdivieso@outlook.com], Jorge Brito M. [jorgeyakuma@yahoo.es]. Produced by: Juliana Philipp & Karla Valdivieso.

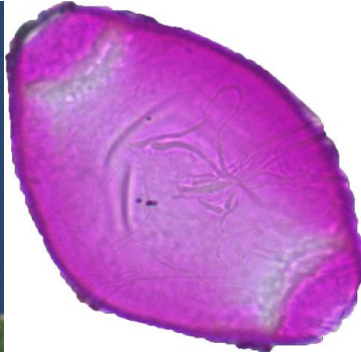
fieldguides.fieldmuseum.org [987] versión 1 3/2018



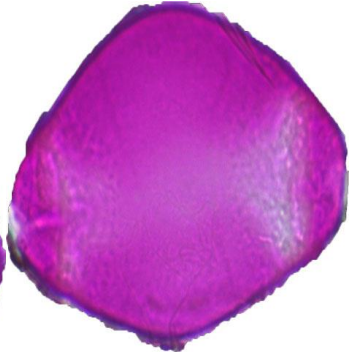
97 *Fuchsia cf. sessilifolia*
ONAGRACEAE



98 *Fuchsia cf. sessilifolia*
ONAGRACEAE



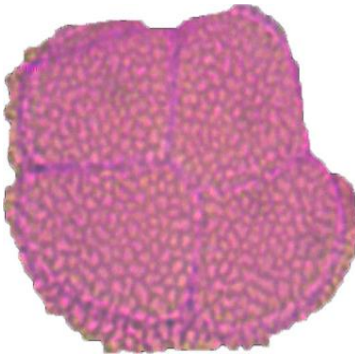
99 *Fuchsia cf. sessilifolia*
ONAGRACEAE = 332.20 μm



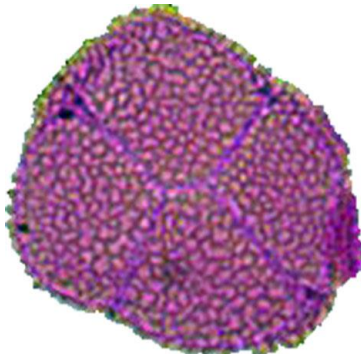
100 *Fuchsia cf. sessilifolia*
ONAGRACEAE



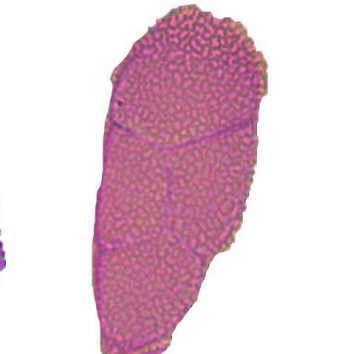
101 *Ponthieva rostrata*
ORCHIDACEAE



102 *Ponthieva rostrata*
ORCHIDACEAE



103 *Ponthieva rostrate*
ORCHIDACEAE = 175.25 μm



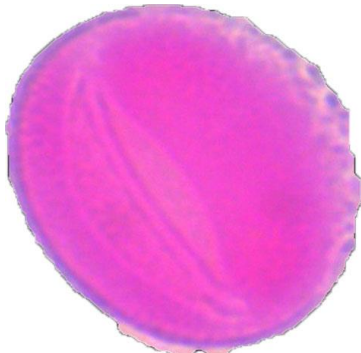
104 *Ponthieva rostrate*
ORCHIDACEAE = 175.25 μm



105 *Castilleja fissifolia*
OROBANCHACEAE



106 *Castilleja fissifolia*
OROBANCHACEAE



107 *Castilleja fissifolia*
OROBANCHACEAE = 267.61 μm



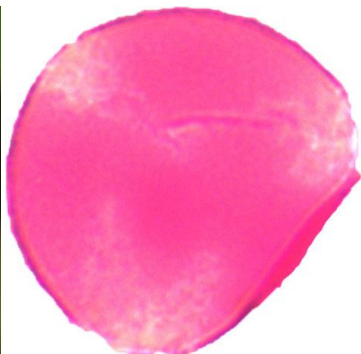
108 *Castilleja fissifolia*
OROBANCHACEAE



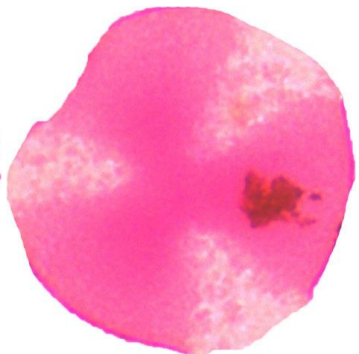
108 *Lamourouxia virgata*
OROBANCHACEAE



109 *Lamourouxia virgata*
OROBANCHACEAE



110 *Lamourouxia virgata*
OROBANCHACEAE = 182.68 μm



111 *Lamourouxia virgata*
OROBANCHACEAE

Reserva Geobotánica Pululahua, Pichincha, ECUADOR

Common Pollen Grains of Chaupisacha, Pondoña y Moraspungo

Karla Valdivieso Bermeo & Jorge Brito

Instituto Nacional de Biodiversidad, Quito-Ecuador, Instituto de Ciencias Biológicas, Escuela Politécnica Nacional, Quito

Support: Pacific Lutheran University: Earth Deeds Carbon Mitigation Initiative. Photos: Karla Valdivieso Bermeo y Jorge Brito M.

© Karla Valdivieso Bermeo. [kae_valdivieso@outlook.com], Jorge Brito M. [jorgeyakuma@yahoo.es]. Produced by: Juliana Philipp & Karla Valsivieso.

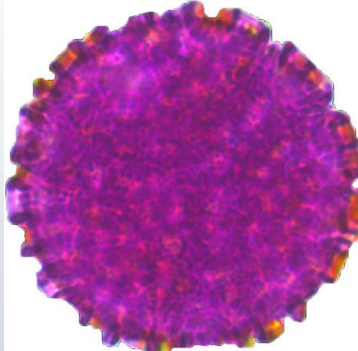
fieldguides.fieldmuseum.org [987] versión 1 3/2018



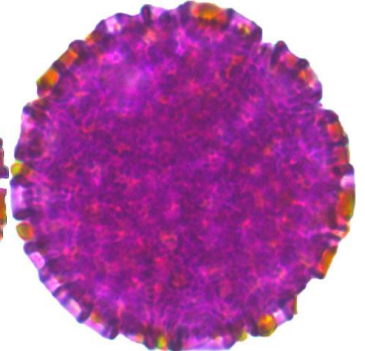
112 *Passiflora mixta* var. *eriantha*
PASSIFLORACEAE



113 *Passiflora mixta* var. *eriantha*
PASSIFLORACEAE



114 *Passiflora mixta* var. *eriantha*
PASSIFLORACEAE=242 μm



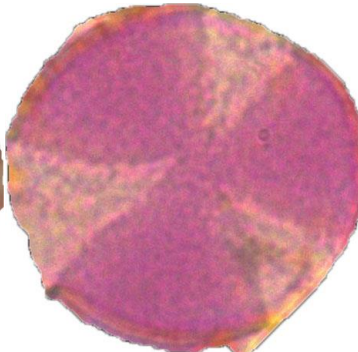
115 *Passiflora mixta* var. *eriantha*
PASSIFLORACEAE



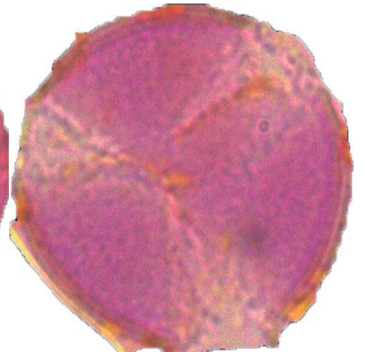
116 *Alonsoa meridionalis*
SCROPHULARIACEAE



117 *Alonsoa meridionalis*
SCROPHULARIACEAE



118 *Alonsoa meridionalis*
SCROPHULARIACEAE=111 μm



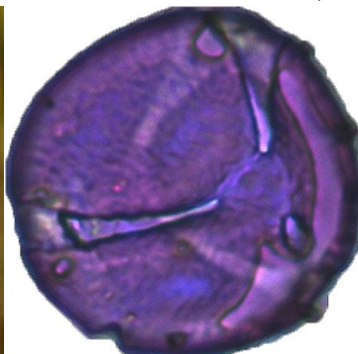
119 *Alonsoa meridionalis*
SCROPHULARIACEAE



120 *Cestrum peruvianum*
SOLANACEAE



121 *Cestrum peruvianum*
SOLANACEAE



122 *Cestrum peruvianum*
SOLANACEAE = 152.28 μm



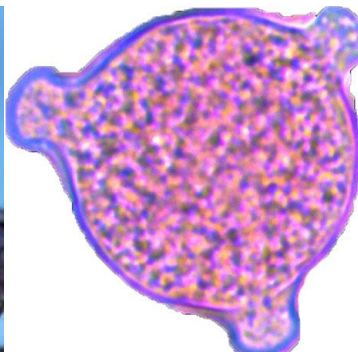
123 *Cestrum peruvianum*
SOLANACEAE



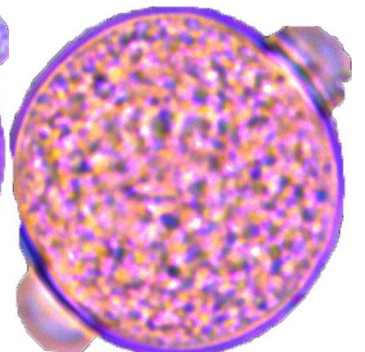
124 *Solanum caripense*
SOLANACEAE



125 *Solanum caripense*
SOLANACEAE



126 *Solanum caripense*
SOLANACEAE = 124.5 μm



127 *Solanum caripense*
SOLANACEAE

Reserva Geobotánica Pululahua, Pichincha, ECUADOR

Common Plants Pollen of Chaupisacha, Pondoña y Moraspungo

Karla Valdivieso Bermeo & Jorge Brito

Instituto Nacional de Biodiversidad, Quito-Ecuador, Instituto de Ciencias Biológicas, Escuela Politécnica Nacional, Quito

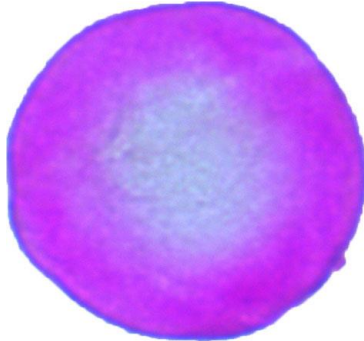
Support: Pacific Lutheran University; Earth Deeds Carbon Mitigation Initiative . Photos: Karla Valdivieso Bermeo y Jorge Brito M.

© Karla Valdivieso Bermeo. [kae_valdivieso@outlook.com], Jorge Brito M. [jorgeyakuma@yahoo.es]. Produced by: Juliana Philipp & Karla Valdivieso.

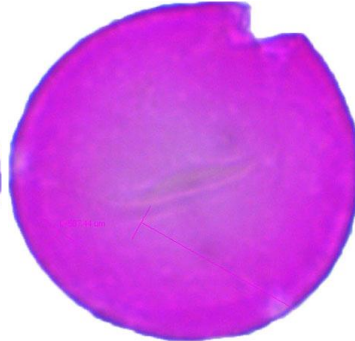
fieldguides.fieldmuseum.org [987] versión 1 3/2018



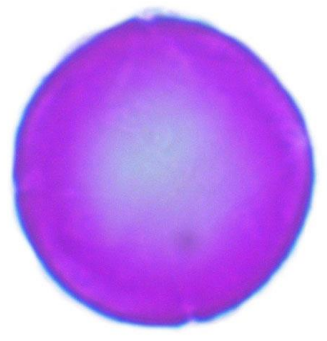
128 *Lantana camara*
VERBENACEAE



129 *Lantana camara*
VERBENACEAE =242 µm



130 *Lantana camara*
VERBENACEAE



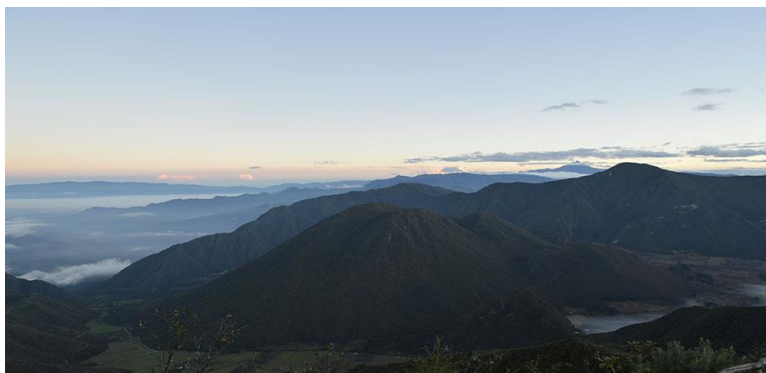
131 *Lantana camara*
VERBENACEAE



132 Chaupisacha



133 Sendero del Agua



134 Moraspungo