

LT 100 TB58 J

Remote Sensors

Standard, Remote Photoelectric Systems

Compatible Receivers:

LR 100 TB58 J



Product Data	
Function:	Transmitter
Housing Material:	Nickel Plated Brass
Housing:	M12 x 1
Connection:	4 pin, M12 plug
Sensing Range:	Up to 18 m
Optical Angle:	+/- 6° (emission)
Indicators:	None

Technical Data	
Photo Transistor:	-
Power On Indicator:	-
Output Indicator:	-
Light Source:	Infrared
Cable:	-
Housing Material Sensor Housing:	Nickel Plated Brass
Housing Material Lens Cover:	Polycarbonate
Transmitter Diode:	Ga Al As, (880 nm)
Cable Sleeve:	-
Min. Cable Bending Radius:	-

Environmental Data	
Vibration:	10 – 55 Hz, 0,5 mm
Shock:	30 g
Operation Temperature:	- 25 to +65 °C
Storage Temperature:	- 40 to +80 °C
Sealing Class:	IP 67
Light Immunity 20':	> 80 000 lux

Approvals



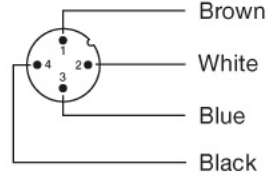
Connections

4 pin, M12

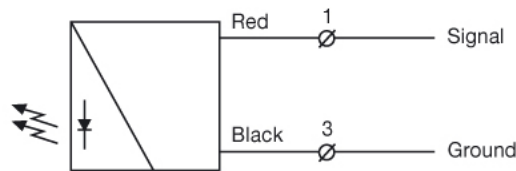
Sensor Plug
(Male)



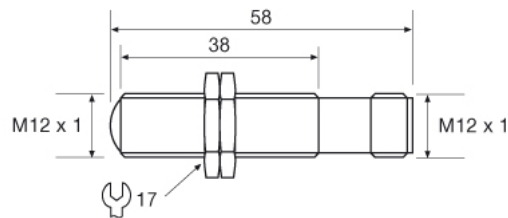
Cable Plug
(Female)



Wiring Diagram

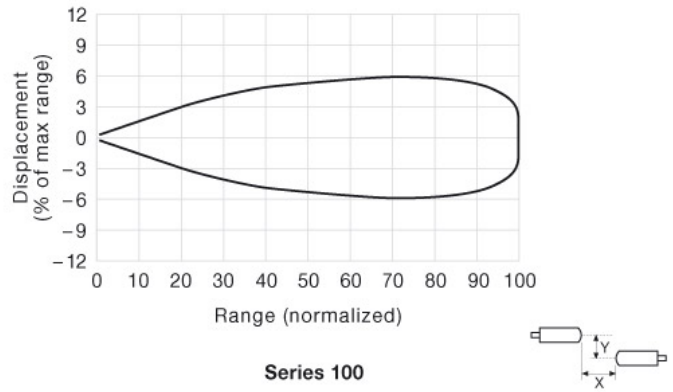


Dimensions



Sensing Characteristics

Parallel Displacement



Angular Displacement

