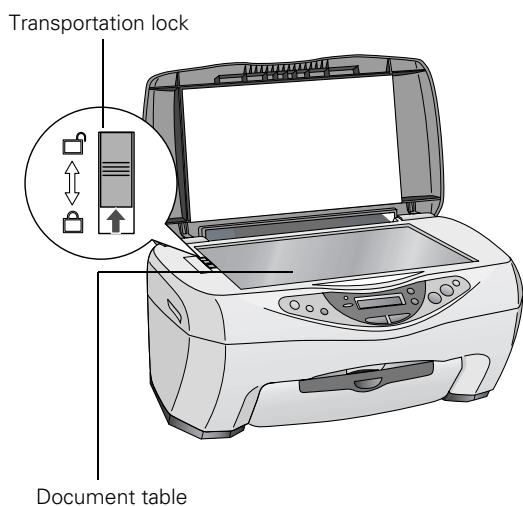
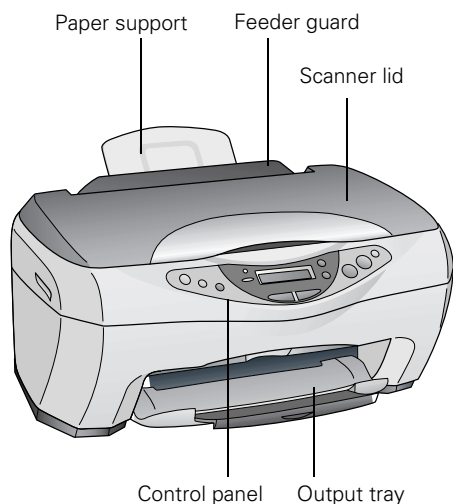


EPSON Stylus CX3200 Parts



User Replaceable Parts

Description	Part number
Paper support	1211889
Cover, entrance	1154295

Accessories

Ink Cartridges

Ink cartridge	Part number
Black	T040120
Color	T041020

Media

Paper name	Size	Part number
EPSON Premium Bright White Paper	Letter (8.5 x 11 inches)	S041586
EPSON Photo Quality Ink Jet Paper	Letter (8.5 x 11 inches)	S041062
	A4 (8.3 x 11.7 inches)	S041061
	Legal (8.5 x 14 inches)	S041067
EPSON Photo Quality Ink Jet Cards	A6 (4.1 x 5.8 inches)	S041054
EPSON Photo Paper or EPSON Glossy Photo Paper	4 x 6 inches, with perforated edges	S041134 S041671
	4 x 6 inches, non-perforated, borderless	S041458
	Letter (8.5 x 11 inches)	S041141 S041271 S041649
	A4 (8.3 x 11.7 inches)	S041140
	Panoramic (8.3 x 23 inches)	S041145
	EPSON Matte Paper Heavyweight	Letter (8.5 x 11 inches) 8 x 10 inches, borderless
EPSON Double-Sided Matte Paper	Letter (8.5 x 11 inches)	S041568
EPSON All Purpose Glossy Paper	Letter (8.5 x 11 inches)	S041654
EPSON Premium Glossy Photo Paper	Letter (8.5 x 11 inches)	S041286 S041667
	4 x 6 inches, borderless	S041682
	5 x 7 inches, borderless	S041464
	8 x 10 inches, borderless	S041465
EPSON Premium Semigloss Photo Paper	Letter (8.5 x 11 inches)	S041331
EPSON Ink Jet Transparencies	Letter (8.5 x 11 inches)	S041064
EPSON Photo Quality Self Adhesive Sheets	A4 (8.3 x 11.7 inches)	S041106
EPSON Iron-On Transfer Paper	Letter (8.5 x 11 inches)	S041153 S041155
EPSON Photo Stickers® Kit (CD-ROM/stickers)	A6 (4.1 x 5.8 inches)	S041144-KIT
EPSON Photo Stickers (refill)	A6 (4.1 x 5.8 inches)	S041144
EPSON Glossy Photo Greeting Cards	Letter (8.5 x 11 inches); perforated edges	S041606

Specifications

Printing

Printing method	On-demand ink jet
Nozzle configuration	Monochrome (black) 144 nozzles Color (cyan, magenta, yellow), 144 nozzles (48 nozzles per color × 3)
Print resolution	Up to 5760 × 720 dpi on various papers using Photo RPM
Print direction	Bidirectional with logic seeking
Control code	ESC/P Raster EPSON Remote

Paper

Note:

Since the quality of any particular brand or type of paper may be changed by the manufacturer at any time, EPSON cannot guarantee the quality of any non-EPSON brand or type of paper. Always test a sample of paper stock before purchasing large quantities or printing large jobs.

Single sheets

Size	A4 (8.3 × 11.7 inches) A5 (5.8 × 8.3 inches) A6 (4.1 × 5.8 inches) B5 (7.2 × 10.1 inches) Letter (8.5 × 11 inches) Half-letter (5.5 × 8.5 inches) Legal (8.5 × 14 inches) Executive (7.3 × 10.5 inches)
Paper type	Plain bond paper, special paper distributed by EPSON
Thickness (plain bond paper)	0.003 to 0.004 inch (0.08 to 0.11 mm)
Weight (plain bond paper)	17 lb (64 g/m ²) to 24 lb (90 g/m ²)

Envelopes

Size	132 × 220 (5.2 × 8.7 inches) No. 10 (4.1 × 9.5 inches) DL (4.3 × 8.7 inches) C6 (4.5 × 6.4 inches)
Paper type	Plain bond paper, air mail
Thickness	0.006 to 0.02 inch (0.16 to 0.52 mm)
Weight	12 lb (45 g/m ²) to 20 lb (75 g/m ²)

Ink Jet Cards

Size	A6 (4.1 × 5.8 inches)
Paper type	Special paper distributed by EPSON

Iron-On Transfer Paper, Transparencies, and Glossy Paper

Size	Letter (8.5 × 11 inches)
Paper type	Special paper distributed by EPSON

Self Adhesive Sheets

Size	A4 (8.3 × 11.7 inches)
Paper type	Special paper distributed by EPSON

Photo Paper and Glossy Photo Paper

Size	Letter (8.5 × 11 inches) 4 × 6 inches (101.6 × 152.4 mm) A4 (8.3 × 11.7 inches) Panoramic (8.3 × 23 inches)
Paper type	Special paper distributed by EPSON

Premium Glossy Photo Paper

Size	Letter (8.5 × 11 inches) 4 × 6 inches (101.6 × 152.4 mm) 5 × 7 inches (127 × 178 mm) 8 × 10 inches (203 × 254 mm)
Paper type	Special paper distributed by EPSON

Photo Stickers

Size	A6 (4.1 × 5.8 inches) with 16 frames
Paper type	Special paper distributed by EPSON

Matte Paper Heavyweight and Double-Sided Matte

Size	Letter (8.5 × 11 inches) 8 × 10 inches (203 × 254 mm; Matte Paper Heavyweight only)
Paper type	Special paper distributed by EPSON

Note:

Poor quality paper may reduce the print quality and cause paper jams or other problems. If you have print quality problems, switch to a higher grade paper.

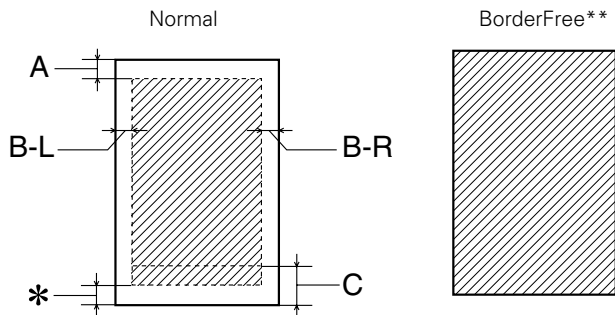
Do not load curled or folded paper.

Use paper under normal conditions:
Temperature: 59 to 77 °F (15 to 25 °C)
Humidity: 40 to 60% RH

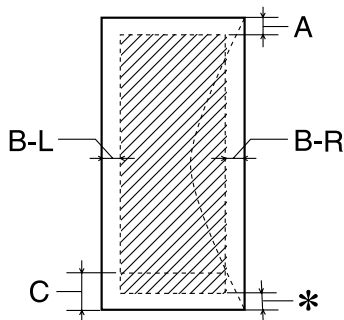
Store Photo Quality Self Adhesive Sheets under the following conditions:
Temperature: 59 to 86 °F (15 to 30 °C)
Humidity: 20 to 60% RH

Printable Area

Single sheets or cards



Envelopes



- A: The minimum top margin is 0.12 inch (3.0 mm).
- B-L: The minimum left margin is 0.12 inch (3.0 mm).
- B-R: The minimum right margin is 0.12 inch (3.0 mm).
- C: The minimum bottom margin is 0.49 inch (12.5 mm).
- * You can extend the minimum bottom margin to 0.12 inch (3 mm), however print quality may decline in the expanded area. Before printing large jobs using an extended margin setting, print a single sheet to confirm printout quality.
- ** When printing with the BorderFree or Borderless feature, the print quality may drop in the top and bottom areas of the printout, or the area may be smeared.

Note:

Always load paper into the sheet feeder with the short edge first. Load envelopes flap edge left with the flap side down.

Ink Cartridges

Black Ink Cartridge (T040120)

Color	Black
Print capacity*	600 pages/A4 (ISO/IEC 10561 Letter Pattern at 360 dpi, 5% duty)
Temperature	Storage: -4 to 104 °F (-20 to 40 °C) 1 month at 104 °F (40 °C) Transit: -22 to 140 °F (-30 to 60 °C) 1 month at 104 °F (40 °C) 120 hours at 140 °F (60 °C) Freezing:** 3.2 °F (-16 °C)
Dimensions	Width: 1.1 inches (28.1 mm) Depth: 2.6 inches (66.85 mm) Height: 1.5 inches (38.5 mm)

Color Ink Cartridge (T041020)

Color	Cyan, magenta, and yellow
Print capacity*	300 pages (A4, 360 dpi, 5% duty each color)
Temperature	Storage: -4 to 104 °F (-20 to 40 °C) 1 month at 104 °F (40 °C) Transit: -22 to 140 °F (-30 to 60 °C) 1 month at 104 °F (40 °C) 120 hours at 140 °F (60 °C) Freezing:** -0.4 °F (-18 °C)
Dimensions	Width: 1.7 inches (43.2 mm) Depth: 2.6 inches (66.85 mm) Height: 1.5 inches (38.5 mm)

* The figure given is based upon continuous printing after ink cartridge replacement. The actual print capacity may vary, depending on how often you use the print head cleaning function and how often you turn this product on.

** Ink thaws and is usable after approximately 3 hours at 77 °F (25 °C).

Caution:

EPSON recommends the use of genuine EPSON ink cartridges only. Other products not manufactured by EPSON may cause damage to this product not covered by EPSON's warranties.

Do not use an ink cartridge if the date on the package has expired.

Do not refill the ink cartridges. This product calculates the amount of ink remaining using an IC chip on the ink cartridge. Even if the cartridge is refilled, the amount of ink remaining will not be recalculated by the IC chip and the amount of ink available for use will not change.

Scanning

Scanner type	Flatbed color image scanner
Photoelectric device	Color CCD line sensor
Effective pixels	5,100 × 7,020 pixels at 600 dpi, 100%
Document size	8.5 × 11.7 inches (216 × 297 mm) Letter or A4 size (reading area selectable with software)
Scanning resolution	600 dpi (main) 1200 dpi (sub)
Output resolution	50 to 4800 dpi (adjustable in one-dpi increments), 7200 dpi, and 9600 dpi
Color separation	RGB color filters on CCD
Image data	16 bits per pixel per color internal 8 bits per pixel per color external
Gamma correction	User defined 1 level
Interface	USB
Light source	White cold cathode fluorescent lamp
Reliability	30,000 cycles of carriage movements (main unit MCBF)
Lamp	10,000-hour life

Mechanical

Paper feed method	Friction
Paper path	Sheet feeder, rear entry
Sheet feeder capacity	About 100 sheets at 17 lb (64 g/m ²)
Dimensions	Width: 18.7 inches (475 mm) Depth: 15.3 inches (389 mm) Height: 9.25 inches (235 mm)
Weight	16.5 lb (7.5 kg) without the ink cartridges

Electrical

Input voltage range	99 to 132V
Rated frequency range	50 to 60 Hz
Input frequency range	49.5 to 60.5 Hz
Rated current	0.5 A
Power consumption	Approx. 22 W (ISO10560 Letter pattern) Approx. 6.5 W in sleep mode Approx. 0.3 W in power-off mode

Note:

Check the label on the back of this product for the voltage information.

Environmental

Temperature	Operation: 50 to 95 °F (10 to 35 °C) Storage: -4 to 104 °F (-20 to 40 °C) 1 month at 104 °F (40 °C) Transit:* -4 to 140 °F (-20 to 60 °C) 120 hours at 140 °F (60 °C)
Humidity	Operation: 20 to 80% RH Storage:* 5 to 85% RH

* Stored in shipping container without condensation

Standards and Approvals

Safety	UL 1950 CSA C22.2 No.950
EMC	FCC part 15 Subpart B class B CSA C108.8 Class B

Loading Paper

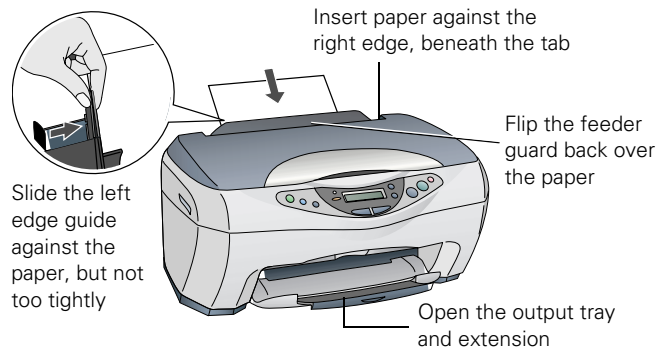
Single Sheets

1. Flip the feeder guard forward.
2. Insert your paper against the right edge of the sheet feeder, beneath the tab.
3. Pinch the left edge guide and slide it against the paper (but not too tightly).
4. Flip the feeder guard back over the paper.

Note:

Make sure you didn't insert the paper in front of the feeder guard.

5. Open the output tray and its extension.

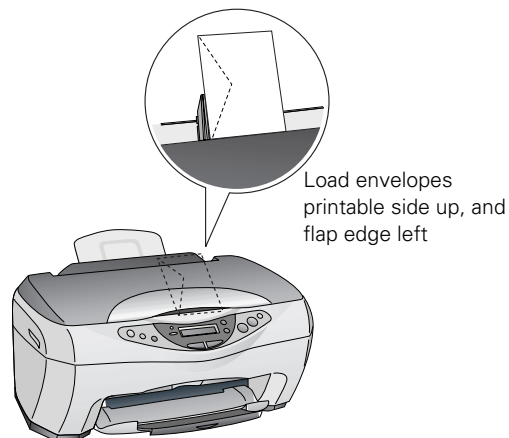


Also be sure to:

- Load the printable side face-up. It's often whiter or brighter than the other side.
- Load letterhead or preprinted paper into the Stylus CX3200 top edge first.
- Don't load paper above the tab or arrow on the left edge guide.
- Load up to approximately 50 sheets of plain paper at a time.

Envelopes

1. Load up to 10 envelopes at a time, flap edge left, printable side up against the right edge of the sheet feeder and beneath the tab.
2. Pinch the left edge guide and slide it against the envelopes (but not too tightly).



Note:

For best results, press each envelope flat before loading, or load one envelope at a time.

3. Select the following settings:

- Plain paper as the Type or Media Type setting
- The correct envelope size as the Size (Windows®) or Paper Size (Macintosh®) setting
- Landscape as the Orientation setting

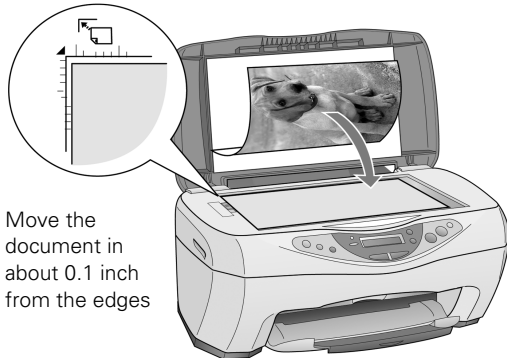
Selecting the Correct Media Type

Select the correct Type (Windows) or Media Type (Macintosh) setting so your printer knows what kind of paper you're using and adjusts the ink coverage accordingly.

For this paper . . .	Select this Type or Media Type setting . . .
Plain paper sheets or envelopes	Plain paper
EPSON Premium Bright White Paper	Bright White Paper
EPSON Iron-On Transfer Paper	360 dpi Ink Jet Paper
EPSON Photo Quality Ink Jet Paper EPSON Photo Quality Ink Jet Cards EPSON Photo Quality Self Adhesive Sheets	Photo Quality Ink Jet Paper
EPSON Matte Paper Heavyweight EPSON Double-Sided Matte Paper	Matte Paper - Heavyweight
EPSON Photo Paper EPSON Glossy Photo Paper EPSON All Purpose Glossy Paper EPSON Photo Quality Glossy Paper EPSON Glossy Photo Greeting Cards	Glossy Photo Paper
EPSON Premium Glossy Photo Paper EPSON Premium Semigloss Photo Paper	Premium Glossy Photo Paper
EPSON Photo Stickers	Photo Quality Glossy Film
EPSON Ink Jet Transparencies	Ink Jet Transparencies

Placing Your Original Document

Place your document face-down on the glass, in the corner shown below. Move your document about 0.1 inch from the top and side edge so your entire document is scanned.



Move the document in about 0.1 inch from the edges

Note:

If you place your document against the guides, the edges next to the guides won't be scanned.

If you need to scan a thick document, such as a book, you can remove the scanner lid to scan. Gently press down the original to keep it flat on the document table. Be sure to replace the scanner lid when you're finished.

Stand-Alone Copying

Basic Copying

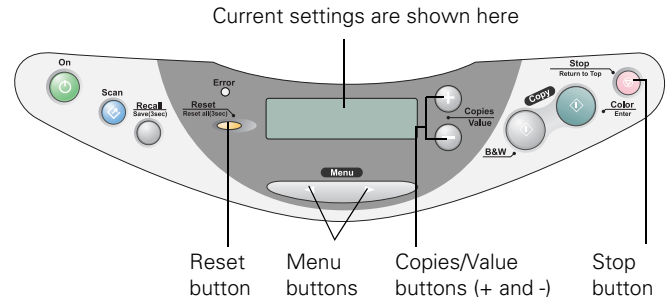
1. Place your document face-down on the glass, as shown to the left.
2. The default copy settings are displayed on the control panel. Change any necessary copy settings, as described in "Changing Copy Settings" below.
3. Press the **Color Copy** button (for color copies) or **B&W Copy** button (for black and white copies). Your document is scanned and then printed. If you're using the **2-up Copy Mode** setting (see "Type of Copies" on page 7), repeat these steps for your second page.

Note:

Your copied image size may not be the exact same size as your original.

Changing Copy Settings

The current copy settings are shown on the LCD screen. You can change copy settings using the control panel, as described below.



When you finish changing a setting, press the **Stop** button.

Note:

To clear a setting, press the **Reset** button. To clear all the setting changes you've made, press and hold the **Reset** button for at least 3 seconds.

If you'll be changing the Copy mode setting (as described in "Type of Copies" on page 7), select your Copy mode before selecting any other copy settings.

Number of Copies

Press the **+** or **- Copies** buttons. (If you're using the **2-up Copy Mode** setting (see "Type of Copies" below), you can't select the number of copies.)

Paper Size

Press a **Menu** button until you see **Paper size** on the LCD screen. Then press the **+** or **- Value** buttons to select the size of the paper you loaded, either **Letter**, **4 × 6**, **5 × 7**, or **A4** (8.3 × 11.7 inches).

Lighten or Darken


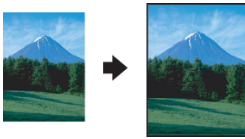
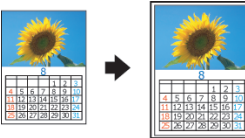
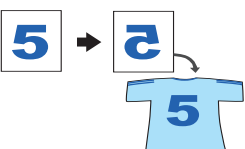
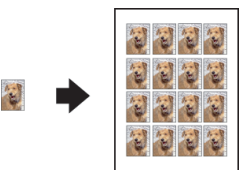
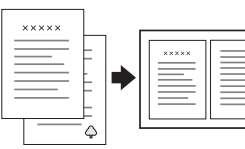

Press a **Menu** button until you see **Lighter/Darker** on the LCD screen. Then press the **+** or **- Value** buttons to lighten or darken your copies.

Type of Copies

Note:

The Copy mode settings determine the options available with other settings on the control panel. Not all of the other options described here are available with every Copy mode setting.

Press a **Menu** button until you see **Copy mode** on the LCD screen. Then press the **+** or **- Value** buttons to select one of these copy modes:

Copy mode	Results
Standard Margins Copies your original with an 0.55-inch margin at the bottom of the page	
Border Free Sizes your original as necessary to fit to the edges of your paper*	
Small Margins Copies your original with only an 0.05-inch border around the edges*	
Mirror Inverts your original horizontally for printing on transfer paper	
Repeat Copies an image multiple times on one sheet (Works best with originals that are business-card size or smaller)	
2-up Copies two originals onto one sheet	
Minimize Margins Copies your original with only an 0.1-inch border around the edges*	

* If you notice reduced print quality at the bottom of your copy, try using the Standard Margins setting.

Copy Quality

Press a **Menu** button until you see **Quality&Paper** on the LCD screen. Then press the **+** or **- Value** buttons to select a print quality appropriate for your document and the paper you loaded.

Quality&Paper setting	Use when you've loaded. . .
Plain Paper-Econ	Plain paper or Premium Bright White Paper for quick copying with draft print quality
Plain Paper-Norm	Plain paper or Premium Bright White Paper for text copying with normal print quality
Plain Paper-Fine	Plain paper or Premium Bright White Paper for text and graphics copying with high print quality
PQIJ Paper-Fine	Photo Quality Ink Jet Paper, Cards, or Self-Adhesive sheets for copying with high print quality (also for Plain paper or Premium Bright White Paper for improved image quality)
PQIJ Paper-Photo	Photo Quality Ink Jet Paper, Cards, or Self-Adhesive sheets for copying with photo print quality (also for Plain paper or Premium Bright White Paper for improved image quality)
Photo Paper	Photo Paper, Glossy Photo Paper, Photo Quality Glossy Paper, Glossy Photo Greeting Cards, or All Purpose Glossy Paper
Premium Glossy	Premium Glossy Photo Paper
Matt Paper HW	Matte Paper Heavyweight or Double-Sided Matte Paper

Note:

Not all of these settings may be available, depending on the current **Copy mode** setting.

Reduce or Enlarge

Press a **Menu** button until you see **Reduce/Enlarge** on the LCD screen. Then press the **+** or **- Value** buttons to enlarge or reduce your document to fit on the paper you loaded. Or select **Auto Fit Page** to have the EPSON Stylus CX3200 automatically determine the necessary reduction or enlargement.

To reduce or enlarge by a precise percentage, press a **Menu** button until you see **Zoom In/Out** on the LCD screen. Then press the **+** or **- Value** buttons to select a percentage of the scanned image for the resulting print.

Note:

If you select **Auto Fit Page** as the Reduce/Enlarge setting to copy a document with white or very light colored edges, the original size may not be recognized correctly, creating an incorrect size copy. If this occurs, select **100%** as the Reduce/Enlarge setting and use the Zoom In/Out setting to adjust the size of your copy.

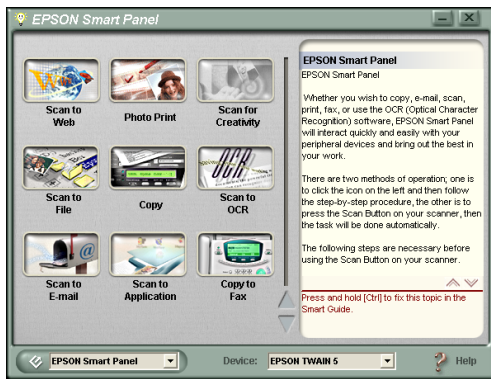
Using EPSON Smart Panel (Windows and OS 8.6 to 9.x Only)






Smart Panel is an easy, step-by-step interface for scanning, copying, printing, and more. You can use it to launch a variety of programs on your computer, as described below, or use it with the EPSON Stylus CX3200 Scan button for automatic scanning and copying.

To start Smart Panel, double-click the Smart Panel icon on your desktop. Alternately, if you're running Windows, click **Start > All Programs or Programs > EPSON Smart Panel > EPSON Smart Panel**.

Note:


For details on using all the Smart Panel features, click the ? button in Smart Panel or see the on-screen Smart Panel *User Guide*.

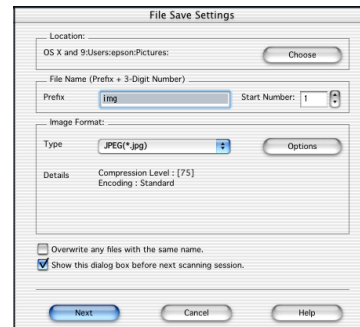






Smart Panel options	Description
 Copy	Scans and prints an image or document with the power and flexibility of a conventional photocopier.
 Scan to OCR	Scans text documents and converts them into editable text files on your computer with great accuracy.
 Scan to E-mail	Scans an image or document and attaches it to an e-mail so you can send it right away. (Requires a MAPI-compliant e-mail program. AOL® is not MAPI-compliant.)
 Scan to Application	Scans an image or document and lets you choose which program it launches for handling the scanned file.
 Copy to Fax	When you install your own fax software, scans your image or document and faxes it to your chosen destination.

Using EPSON Scan to File in Mac OS X

EPSON Scan to File launches EPSON TWAIN and saves the scanned images to files automatically. It generates sequential file names so you can quickly scan an image with different TWAIN settings and select the one you like the most.

1. Place the document face-down on the glass, in the top, left corner as described in "Placing Your Original Document" on page 6.
2. Open your OS X Applications folder, then open the EPSON Scan to File folder.
3. Double-click the  EPSON Scan to File icon. You see the File Save Settings screen:



Smart Panel options	Description
 Scan to Web	Scans an image and uploads it to EPSON's photo-sharing web site.
 Photo Print	Scans and prints photos in various sizes and layouts.
 Scan for Creativity	Scans a photo into ArcSoft™ PhotolImpression™ where you can edit, retouch, enhance, and print it with templates, frames, and borders.
 Scan to File	Scans an image or document directly to a file on your hard drive.

4. The images you scan are saved to the folder listed in the Location box. To change the folder, click the Choose button and select the folder you want.
5. The files are named with the prefix **img**. To change the prefix, enter a different three-character name in the Prefix box.
6. The files are saved in the JPEG (*.jpg) file format. You can select the TIFF, Multi-TIFF, or PICT format from the Type drop-down menu instead.

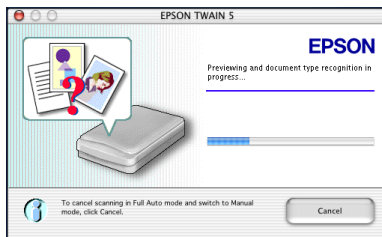
Note:

For details on the available settings, click the **Help** button.

7. Open the File menu and click **Select Scanner**. You see this window:



8. Select **EPSON TWAIN 5** and click **Select**. (You need to perform steps 7 and 8 only the first time you run EPSON Scan to File.)
9. Click **Next** on the File Save Settings screen. After a moment, you see this screen:



10. EPSON TWAIN begins scanning your image in Full Auto Mode. Wait for scanning to finish.

To stop the scan and select settings in manual mode, click **Cancel**. Then click the **Manual mode** button on the next screen. You see the EPSON TWAIN settings dialog box.

Note:

For detailed information on EPSON TWAIN, click the **Help** button.

11. When scanning finishes, EPSON Scan to File saves your file to the location you selected. It's ready to open in a compatible image editing program, print, e-mail, or use as you like.

Cleaning the Print Head

If your printouts are unexpectedly light, or dots or lines are missing, you may need to clean the print head. This unclogs the nozzles so they can deliver ink properly. Print head cleaning uses ink, so clean it only if quality declines.

Note:

You can also use a printer software utility to clean the print head right from your computer. Select the **?** or **Help** button on your printer settings window for instructions running the utility.

1. Make sure the EPSON Stylus CX3200 is turned on but not printing, and the **Error** light is off. (If the **Error** light is flashing or on, you may need to replace an ink cartridge; see "Replacing an Ink Cartridge" on page 10 for details.)
2. Press a **Menu** button until you see **Head Cleaning** on the LCD screen.
3. Press the **Color Copy** button.

Cleaning takes about 30 seconds, during which the Stylus CX3200 makes some noise and the **On** light flashes briefly.

Caution:

Never turn off the EPSON Stylus CX3200 while the **On** light is flashing, unless the Stylus CX3200 hasn't moved or made noise for more than 5 minutes.

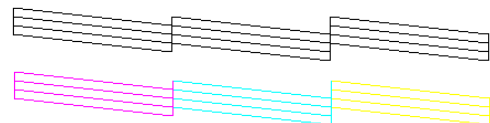
4. When the **On** light stops flashing, run a nozzle check to confirm the print head nozzles are clean.

Make sure paper is loaded, press a **Menu** button until you see **Nozzle Check** on the LCD screen, and press the **Color Copy** button. The nozzle check pattern prints.

Note:

You can also use a printer software utility to print a nozzle check right from your computer. Select the **?** or **Help** button on your printer settings window for instructions running the nozzle check utility.

5. Examine the nozzle check pattern you print. It should look something like this:



Each staggered line should be complete, with no gaps in the dot pattern. If your printout looks okay, you're done.

If you see any gaps in the dot pattern, clean the print head again.

6. When you're finished, press the **Stop** button.

If you don't see any improvement after cleaning three or four times, check the solutions in the *User's Guide*. You can also turn the EPSON Stylus CX3200 off and wait overnight—this allows any dried ink to soften—and then try cleaning the print head again.

Note:

When you don't turn on your EPSON Stylus CX3200 for a long time, the print quality can decline. It's a good idea to turn on your Stylus CX3200 at least once a month to maintain good print quality.

Replacing an Ink Cartridge

If the Error light on the EPSON Stylus CX3200 is flashing and you see an ink low or ink out message on the LCD screen and your computer monitor, you need to replace one of the cartridges.

When a cartridge is more than six months old, you may need to replace it if printouts don't look their best. If the quality doesn't improve after cleaning and aligning the print head, you can replace the cartridge.

Use these EPSON ink cartridges within six months of installing them and before the expiration date on the package:

- ❑ Black ink cartridge: T040120
- ❑ Color ink cartridge: T041020

Caution:

To ensure good results, use genuine EPSON ink cartridges and do not refill them. Other products may cause damage to your EPSON Stylus CX3200 not covered by EPSON's warranty.

When you need new ink cartridges, contact your dealer, or call the EPSON Store at (800) 873-7766 or visit www.epsonstore.com (U.S. sales only). In Canada, please call (800) 463-7766 for dealer referral.

Warning:

Keep ink cartridges out of the reach of children and do not drink the ink.

If ink gets on your hands, wash them thoroughly with soap and water. If ink gets in your eyes, flush them thoroughly with water.

Caution:

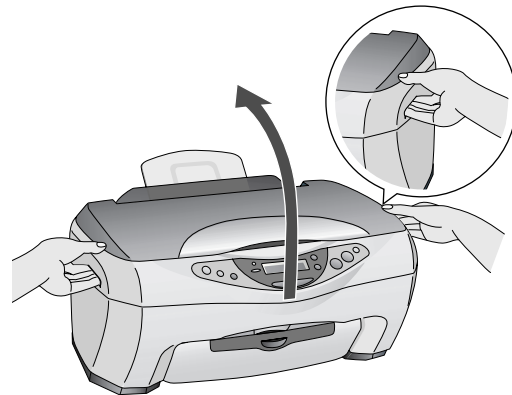
To avoid damaging the EPSON Stylus CX3200, never move the print head by hand.

You cannot print if either ink cartridge is empty. Leave the empty cartridge installed in the EPSON Stylus CX3200 until you have obtained a replacement. Otherwise the ink remaining in the print head nozzles may dry out.

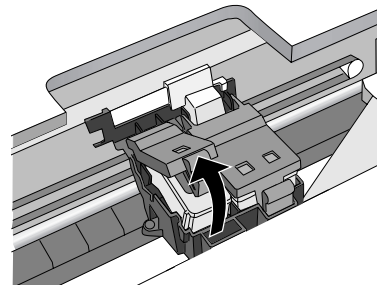
Removing and Installing Ink Cartridges

Be sure you have a new ink cartridge before you begin. Once you start the ink cartridge replacement procedure, you must complete all the steps in one session.

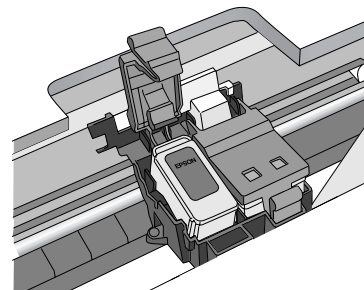
1. Make sure the EPSON Stylus CX3200 is turned on and not printing. The control panel tells you which ink cartridge is low or empty.
2. Press a Menu button until you see **Change Cartridge**, then press the **Color Copy** button. The ink cartridges move to the replacement position.
3. Lift up the scanner.



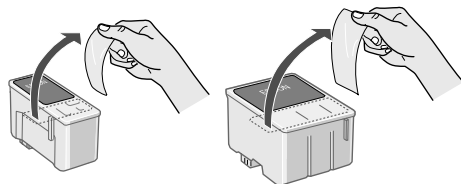
4. Pull up the ink cartridge clamp. (The color cartridge is on the right and the black is on the left.)



5. Lift the cartridge out of the EPSON Stylus CX3200 and dispose of it carefully.



6. Unwrap the new ink cartridge. Then remove *only* the yellow tape seal on top.



Black cartridge

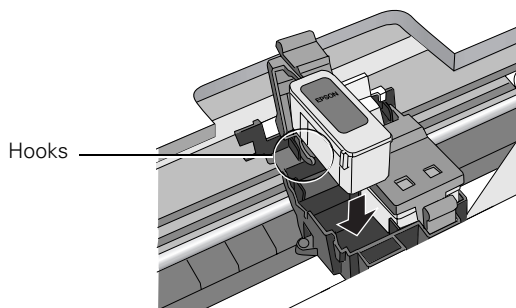
Color cartridge

Caution:

You must remove the yellow tape from the top of the cartridge or you will permanently damage it.

Don't touch the green circuit board on the back of the cartridge; you may inhibit normal operation and printing.

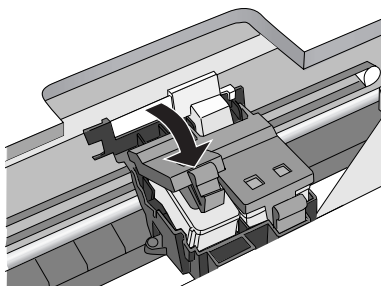
- Lower the new cartridge into its holder and rest the tabs on the hooks in the back.



Caution:

Don't place the cartridge under the hooks; you may damage the clamp when you close it.

- Press down firmly on the ink cartridge clamp until it snaps in place.



If you need to replace the other ink cartridge, repeat steps 4 through 8 before continuing with step 9.

- Carefully lower the scanner and press it down until it clicks into place. The EPSON Stylus CX3200 begins charging the ink delivery system.

The **On** light flashes and the EPSON Stylus CX3200 makes noise. Charging takes about 30 seconds. When it's finished, the **On** light stops flashing and stays on.

Caution:

Never turn off the EPSON Stylus CX3200 while the **On** light is flashing, unless it hasn't moved or made noise for more than 5 minutes.

Control Panel Error Messages

Here is a list of control panel error messages and what you can do when you see them.

Error message	Solution
No color or black ink cartridge --> Press the Color Copy button to install a new ink cartridge.	The indicated ink cartridge is not installed. See page 9 to install a cartridge.
Color or black ink out --> Press the Color Copy button to begin replacing the ink cartridge.	The indicated ink cartridge is out of ink. See page 9 to replace the cartridge.
Ink cartridge error --> Press the Color Copy button to begin replacing the ink cartridge.	There is something wrong with the ink cartridge. See page 9 to replace the cartridge.
Paper jam or misfeed --> Press the Color Copy button and clear the paper jam by hand if necessary.	Paper is jammed. Press the Color Copy button to clear the jam. If it is still jammed, check the solutions in the <i>User's Guide</i> .
Paper out --> Load paper in the sheet feeder and press the Color Copy button.	Load paper in the sheet feeder, then press the Color Copy button to continue printing.
Scanner unit open --> Close the scanner unit.	Carefully close the scanner and press it down until it clicks securely into place.
Scanner error --> See your documentation and call service if necessary.	Press the On button to turn off the EPSON Stylus CX3200. Unlock the transportation lock, if necessary. Turn on your Stylus CX3200 again. If the error message still appears, contact your dealer or EPSON.
Printer error --> See your documentation and call service if necessary.	Press the On button to turn off the EPSON Stylus CX3200, then press it to turn it back on. If the message still appears, contact your dealer or EPSON.

Related Documentation

CPD-14881	EPSON Stylus CX3200 <i>Start Here</i> sheet
CPD-14882	EPSON Stylus CX3200 <i>Macintosh Software Installation/Requirements and Notices</i> booklet
CPD-14880	EPSON Stylus CX3200 CD-ROM with <i>User's Guide</i> (HTML) and EPSON Smart Panel <i>User's Guide</i> (HTML)
PL-CX3200	EPSON Stylus CX3200 Parts Price List