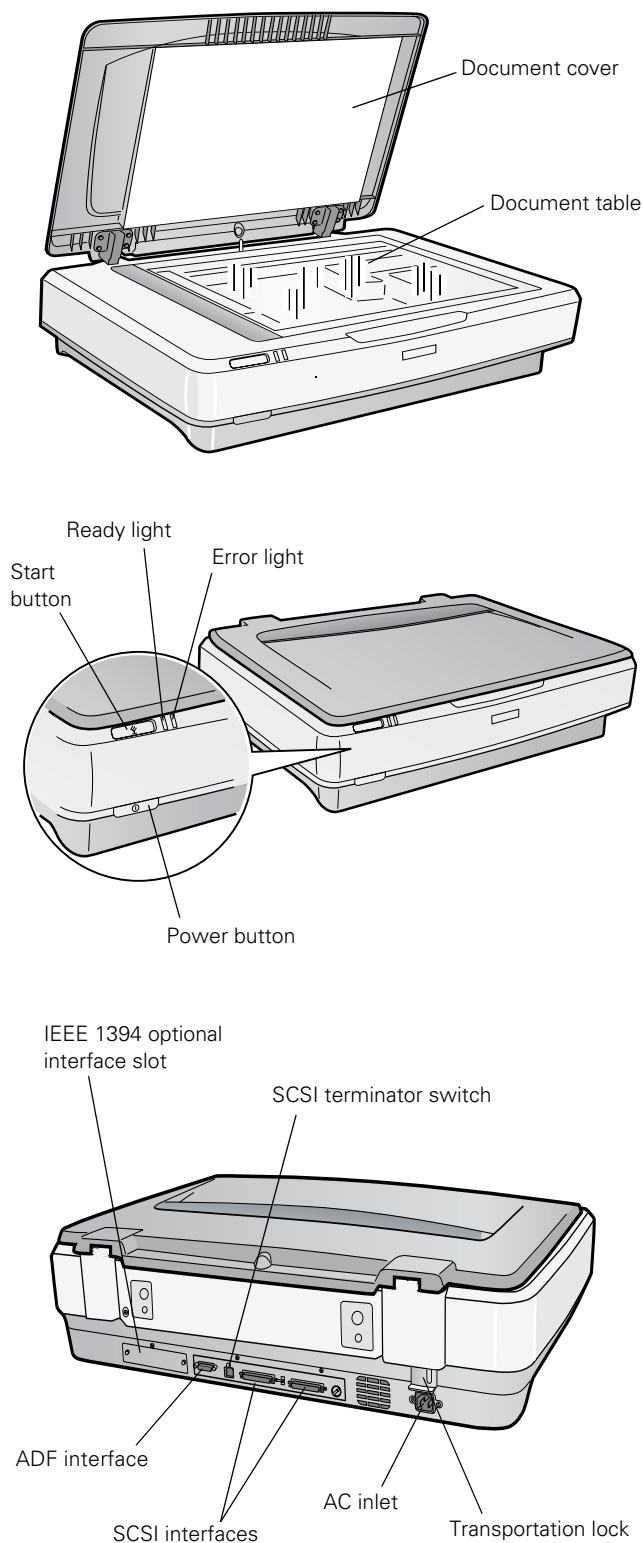


Scanner Parts



Scanner Specifications

General

Scanner type	Flatbed, color
Photoelectric device	Color CCD line sensor
Effective pixels	7020 × 10200 pixels (at 600 dpi)
Color depth	48-bit internal/24-bit external
Grayscale depth	16-bit internal/8-bit external
Maximum document size	11.7 × 17.0 inches (297 × 432 mm); the reading area can be specified from your software
Resolution	600 dpi (optical)
Maximum hardware resolution*	600 dpi (main scan); 1200 dpi with Micro Step Drive (sub scan)
	* The maximum hardware resolution of 600 × 1200 dpi is achieved using EPSON's Micro Step Drive technology
Output resolution	50 to 9600 dpi
Maximum interpolated resolution	4800 dpi
Speed (600 dpi, draft mode)	Color: 3.8 msec/line (approx.) Grayscale: 1.3 msec/line (approx.) Line Art: 1.3 msec/line (approx.)
Color separation	RGB color filters on CCD
Reading sequence	Monochrome: One-pass scanning Color byte sequence: One-pass scanning (R, G, B) Color line sequence: One-pass scanning (R, G, B)
Zoom	50 to 200% in 1% increments
Command level	ESC/I-B7 FS
Pixel depth	16 bits per pixel input, 1 to 8 bits per pixel output
Brightness	7 levels
Line art settings	Fixed threshold TET (Text Enhancement Technology, enable/disable selectable)

Digital halftoning	AAS (Auto Area Segmentation, enable/disable selectable) 3 error diffusion modes (A, B, and C) 4 dither patterns (A, B, C, and D) for bi-level and quad-level data (2 downloadable dither patterns)
Gamma correction	2 types for CRT display 3 types for printer 1 type user-defined
Color correction	1 type for CRT display 3 types for printer (available in color byte sequence mode and color line sequence mode) 1 type user-defined
Interfaces	SCSI 2 (half pitch 50-pin connectors) USB 2.0 (Type B receptacle connector) IEEE 1394 (FireWire), optional 10Base-T/100Base-TX, optional
Light source	Xenon gas cold cathode fluorescent lamp
Reliability	100,000 cycles of carriage movement (main unit MCBF)
Dimensions	Width: 25.8 inches (656 mm) Depth: 18.0 inches (458 mm) Height: 6.2 inches (158 mm)
Weight	Approximately 29.8 lb (13.5 kg)

Electrical

Input voltage range $\pm 10\%$)	100 to 120 VAC 220 to 240 VAC
Rated frequency	50 to 60 Hz
Rated current	100 to 120 VAC: 0.8 A 220 to 240 VAC: 0.3 A
Power consumption	Operating: approximately 50 W (75 W with ADF unit) Standby: approximately 7.5 W

Environmental

Temperature	Operating: 41 to 95 °F (5 to 35 °C) Storage: -13 to 140 °F (-25 to 60 °C)
Humidity (without condensation)	Operating: 10 to 80% Storage: 10 to 85%
Operating conditions	Ordinary office or home conditions. Avoid dust, direct sunlight, and proximity to strong light sources.

Safety Approvals

120 V model	Safety: UL 1950 CSA C22.2 No. 950 EN 60950
	EMC: FCC part 15 subpart B class B CSA C108.8 class B EN 55022 (CISPR Pub 22) class B AS/NZS 3548 class B CNS 13438 class B
230 V model	Safety: EN 60950
	EMC: EN 55022 class B, EN 55024, EN 61000-3-2, 3-3

SCSI Interface

Interface type	ANSI X3T9.2/375R Revision 10L (SCSI 2)
Logic level	TTL-compatible
ID setting	Selectable from 0 to 7
Terminator	Internal terminator (enable/disable selectable)
Connector type	Two half pitch 50-pin connectors

USB Interface

Interface type	Universal Serial Bus Specification, Rev. 2.0
Electrical standard	Full speed mode (12Mb) and High speed mode (480 Mbps) of Universal Serial Bus
Specification	Revision 2.0
Connector type	One receptacle (Type B)

IEEE 1394 FireWire

Interface type	IEEE 1394-1995 compatible
Data transfer method	Half-duplex Data/Strobe differential serial
Synchronization method	Clock synchronization with DS-Link
Encoding/decoding	DS-Link
Logic level	3.3 V
Compatible connectors	IEEE 1394-1995 compatible
Power class	Power class code 100 No power supply from external sources Fitted with a repeat function with bus power

ADF Connector

Interface type	For use with the optional automatic document feeder (B813212)
Output voltage	21.6 to 26.4 VDC (motor drive voltage) 4.75 to 5.25 VDC (sensor logic voltage)
Output current	0.6 A (24 V) 0.3 A (5 V)

Initialization Methods

SCSI interface	
Hardware:	Initialized when the scanner is turned on or the scanner receives a SCSI Reset signal from the SCSI interface
Software:	Initialized when the software sends the Esc @ (initialize the scanner command), or the scanner receives a SCSI Bus Device message
USB interface	
Hardware:	Initialized when the scanner is turned on or the USB cable is plugged into the USB port on the scanner
Software:	Initialized when the software sends the Esc @ command or the scanner receives a Bus Reset from the USB interface

System Requirements

The minimum system requirements are listed below. For optimum performance, a faster processor and more memory are recommended. If you're scanning high resolution images, you need more than the minimum available hard disk space.

Note: Color and tone reproduction are subject to the display capability of your computer system, including the video card, monitor, and software. See the documentation for these products for details.

- A Microsoft Windows-compatible PC with a Pentium-equivalent processor, 233 MHz or faster recommended
- Preinstalled Windows XP, 98, Me, or 2000 for USB connection; Windows XP, 98, Me, 2000 Professional, or Windows NT Workstation with Service Pack 4 or later for SCSI connection
- SCSI, USB, or FireWire IEEE 1394 (Windows XP, Me, or 2000 only) port; FireWire card must be OHCI-compliant
- 64MB RAM (128MB RAM recommended for all systems)
- 300MB available hard disk space
- CD-ROM drive
- SVGA color monitor with 800 × 600 resolution
- 16-bit, 65K-color display adapter card (24-bit display adapter card with millions of colors recommended)

Software Included

- EPSON Scan
- ABBYY FineReader 5.0 Sprint
- ScanSoft PaperPort Deluxe
- Adobe Photoshop Elements 2.0

Optional Automatic Document Feeder (B813212) Specifications

General

Paper input/output	Load face-up; eject face-down
Paper quantity	100 pages (80 g/m ² paper, maximum total thickness under 0.48 inches [12 mm]) 100,000 sheets (load/eject MCBF)
Speed	10 ppm (monochrome, draft mode at 200 dpi)
Dimensions	Width: 23.8 inches (606 mm) Depth: 19.2 inches (488 mm) Height: 5.3 inches (134 mm)
Weight	Approximately 28.7 lb (13 kg)

Electrical

Input voltage	22.8 to 25.2 VDC 4.75 to 5.25 VDC
Input current	24 V: 1.5 A 5 V: 0.4 A

Optional IEEE 1394 Scanner Interface Card (B808342) Specifications

General

Interface type	IEEE 1394-1995 compatible
Data transfer method	Half-duplex Data/Strobe differential serial
Synchronization method	Clock synchronization with DS-Link
Encoding/decoding	DS-Link
Logic level	3.3 V
Compatible connectors	IEEE 1394-1995 compatible
Power class	Power class code 100 No power supply from external sources Fitted with a repeat function with bus power

Environmental

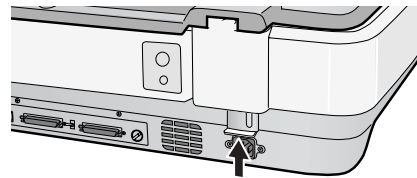
Temperature	Operating: 41 to 95 °F (5 to 35 °C) Storage: -13 to 140 °F (-25 to 60 °C)
Humidity (without condensation)	Operating: 10 to 80% Storage: 10 to 85%

Connector pin assignments

Pin number	Signal name	Function
1	VP	Cable power supply
2	VG	Cable ground
3	TPB	Strobe during receipt, data during transmission (differential pair)
4	TPB	
5	TPA	Data during receipt, strobe during transmission (differential pair)
6	TPA	

Unlocking the Scanner

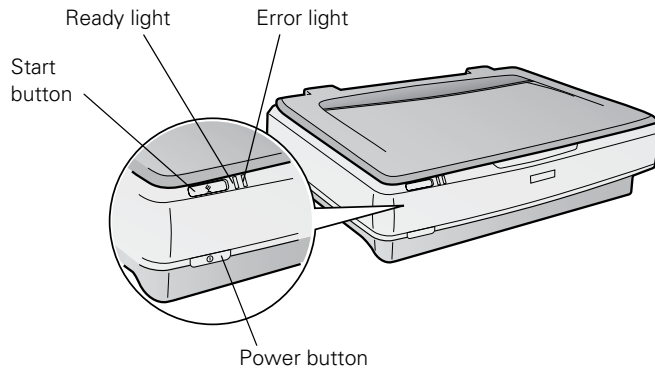
To unlock the scanner, pull up the transportation lock to the Unlock position:

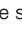


To lock it, push it down.

Scanner Lights

You can diagnose some problems by checking the scanner's lights.



Light	Scanner Status
Ready light is on or flashing.	The green Ready light is on when the scanner is ready to scan. It flashes when scanning is in progress.
Error light is flashing; Ready light is off.	There's a problem with your cable connection. Reconnect the cable to both the scanner and your computer, and then restart your computer. If this doesn't work, try using a different cable. If you have a USB connection, use the USB cable that came with your scanner. If you have a SCSI connection, always restart your computer after changing or reconnecting the cable.
Error and Ready lights are both on.	The scanner has received an incorrect command from your scanning software. Try scanning again.
Error and Ready lights are both off.	Make sure your scanner is connected to a working outlet, then press the  Power button. Restart your computer. If the green Ready light doesn't come on, there may be a problem with the automatic document feeder, or the cover may be open. Make sure the cover or automatic document feeder is closed. If you are using the feeder, make sure a document is loaded, and pages are not jammed.
Error and Ready lights are both flashing.	Check that the transportation lock on the back of the scanner is set to Unlock . If not, unlock the scanner, then turn it off and back on again. Restart your computer. If this doesn't solve the problem, contact EPSON.

How to Scan

The EPSON Scan software offers three scanning modes:

- ❑ **Home Mode** includes a simple interface, automatic image adjustments, and preset configurations for various types of scans.
- ❑ **Office Mode** includes a basic interface with practical scan settings designed for documents. Choose this mode to scan multi-page documents on the optional automatic document feeder.
- ❑ **Professional Mode:** Lets you manually configure advanced image settings, including the histogram setting, tone, color depth, balance, saturation, brightness, and contrast.

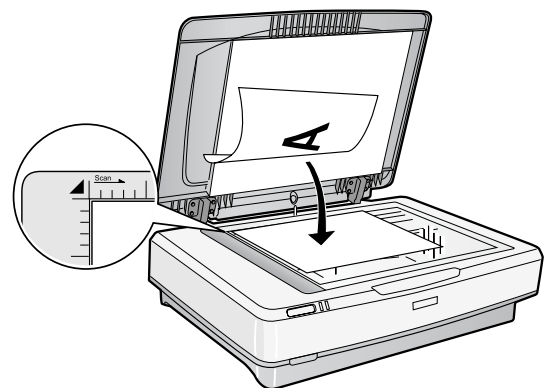
You can use EPSON Scan either in a "stand-alone" mode, or by starting from another program, such as PaperPort Deluxe or Photoshop Elements. (These programs are described in the *User's Guide*.)

Placing the Original Document

Follow the steps below to position the document on the scanner glass properly. (If you're scanning a multi-page document using the optional automatic document feeder, see the *User's Guide*.)

1. Raise the scanner cover and place the document face down in the upper left corner of the document table.

You can scan several pages or photos at the same time. Make sure you leave about an inch of space between them on the document table.



2. Close the document cover slowly. Be careful not to move the document.

Tip: If the edges of your document don't scan properly, move it in one-quarter inch from the edges of the document table.

You can remove the document cover if you need to scan a thick item—such as a book—that doesn't fit under the cover. Simply lift the back of the cover straight up. When you reattach the cover, line the rods up with the positioning holes and lower the cover into place.

Warning: Before removing the document cover, make sure you raise it all the way up. This will prevent the hinges from snapping back on the springs and possibly injuring you.

Scanning to a File With EPSON Scan

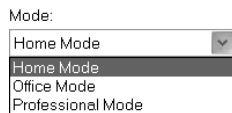
You can use the import or acquire function of a TWAIN-compliant application such as PaperPort Deluxe or Adobe Photoshop to scan images directly into your application. Or you can scan directly to your computer by starting EPSON Scan from the Windows Start menu.

First, place your document or photo on the scanner as described above. Then follow these steps:

1. Click **Start > Programs or All Programs > EPSON Scan > EPSON Scan**.

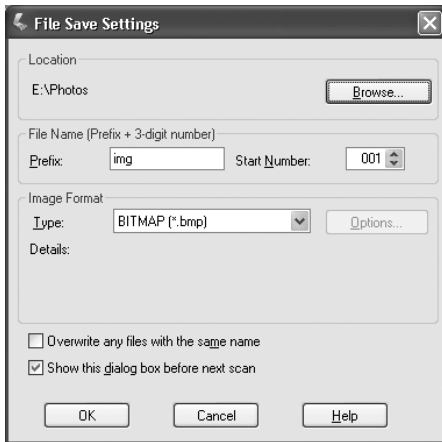
Note: If you have multiple scanners installed, you are prompted to choose your scanner. Click **EPSON GT-15000** and click **OK**.

2. Choose a mode from the Mode list at the top of the EPSON Scan window.



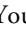
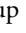
If you choose **Home Mode**, a preview scan opens automatically. (This is the default. If you don't want an automatic preview, deselect **Auto Preview** on the EPSON Scan dialog box.)

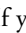
3. Change any settings for the mode you selected.
4. Click **Scan**. You see a File Save Settings window:




5. Type a name for your file in the Prefix field, then choose an image type and click **OK**. (For more details, see the EPSON Scan on-screen Help.)

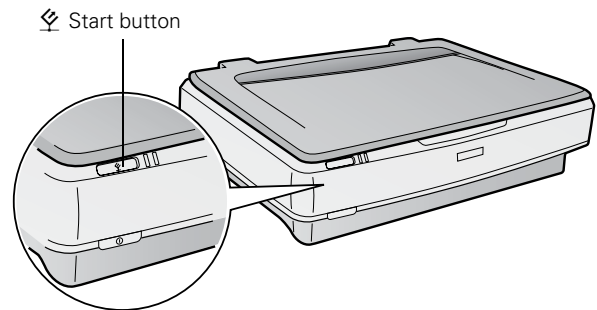
Scanning With the Start Button

You can use the  Start button to open EPSON Scan, and then scan your document as described above. Or, you can set up the  Start button to open any compatible program on your computer and start scanning.

If you have set up the scanner on a network, you can use the  Start button to scan automatically and send the document to an individual computer. For instructions on network scanning, see the on-screen *Reference Guide*.

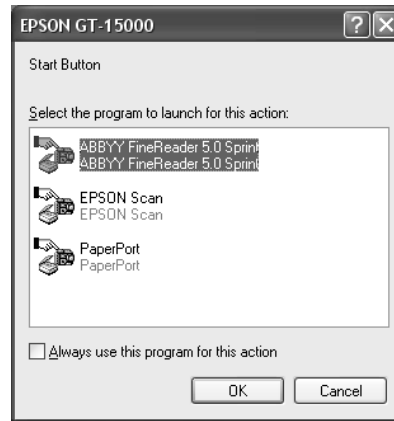
First, place your document or photo on the scanner as described above. Then follow these steps:

1. Press the  Start button.




If you're using Windows 98, Me, or 2000, EPSON Scan opens.

If you're using Windows XP, you see this window:



2. Select the program you want to use.

To have the program open automatically whenever you press the  Start button, check **Always use this program for this action**.

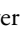
3. Click OK.

If you want to change the program after you set up the Start button, open the Scanners and Cameras utility in the Windows Control Panel.

Right-click your scanner and select **Properties**. Select the **Events** tab, then select the program you want to use.

Cleaning the Scanner

To keep your scanner operating at its best, clean it periodically.

1. Press the  Power button to turn the scanner off, and unplug the power cord.
2. Use a soft, damp cloth and mild detergent to clean the outer case. (Apply the liquid to the cloth, not directly on the scanner.)

Caution: Don't let water get into the scanner.

3. Clean dust and smudges from the document table glass with a soft, dry cloth (a microfiber glass cleaning cloth is recommended). You can also use compressed-air dust remover sprays. Dust on the glass can cause white spots to appear in your scanned image.

To remove grease, use pretreated lens/scanner wipes, or a small amount of glass cleaner on a soft cloth. Dry the document table glass afterwards.

Cautions: Always unplug the scanner before cleaning.

Never use a harsh or abrasive brush or cleaning product to clean the document table. A damaged glass surface can decrease the scanning quality.

Never use alcohol, thinner, or corrosive solvent to clean the scanner. These chemicals can damage the scanner components as well as the case.

Be careful not to spill liquid into the scanner mechanism or electronic components. This could permanently damage them.

Don't spray lubricants inside the scanner.

Never open the scanner case. If you think repairs or adjustments are necessary, consult your dealer or contact EPSON.

Unplug the scanner and refer servicing to qualified service personnel if the power cord or plug is damaged, if liquid has entered the scanner, if the scanner has been dropped or the case damaged, or if the scanner does not operate normally or exhibits a distinct change in performance.

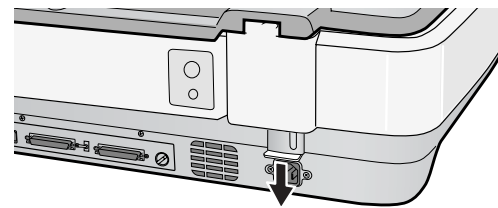
Transporting the Scanner

Always secure the carriage when you transport the scanner a long distance or store it for an extended time.

1. If you're using the automatic document feeder, remove it from the scanner and replace the scanner cover.

Warning: Make sure you have someone help you lift the automatic document feeder.

2. Turn on the scanner and wait until the carriage moves left to the home position. Then turn off the scanner.
3. Push down the transportation lock at the back of the scanner to the **Lock** position.



Transportation lock

4. Use the scanner's original box, or a similar box with enough packaging material to prevent it from moving around in the box.
5. Pack the automatic document feeder in its original box, or use a similar box with enough packaging material to prevent any movement inside the box.

Related Documentation

CPD-17264

EPSON GT-15000 User's Guide

EPSON GT-15000 Software Reference Guide (html)