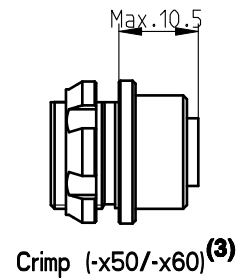
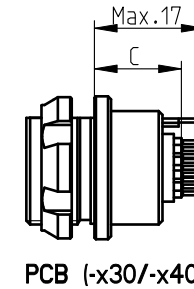
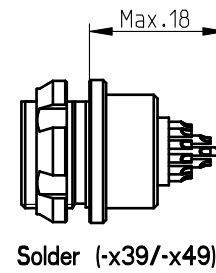
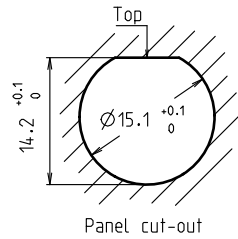
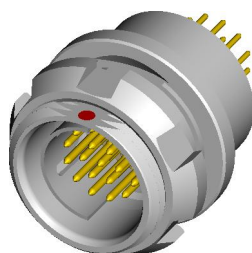


# DBP 104 Multipole Receptacles

All dimensions see note 1)

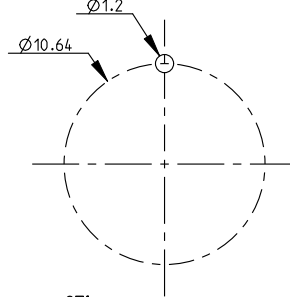
Contact polarity A

Contact polarity Z

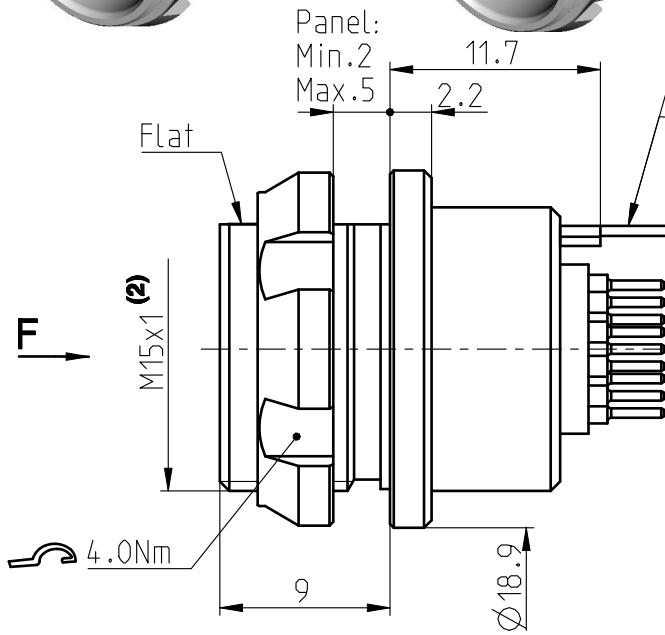


Optional ground pin  
For PCB version only  
(-x30/-x40)

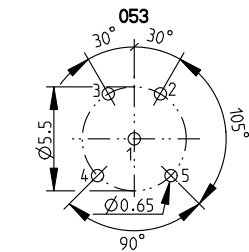
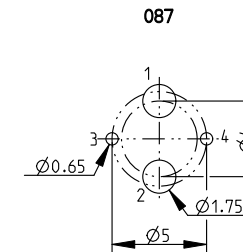
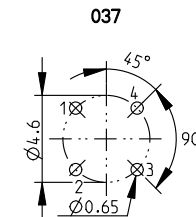
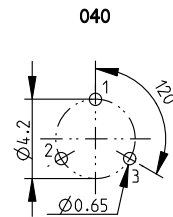
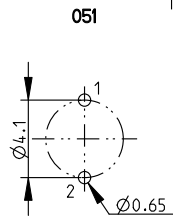
Optional ground pin



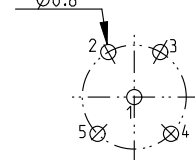
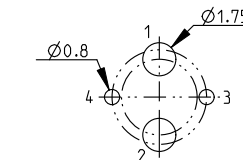
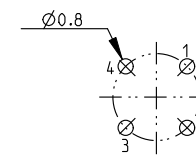
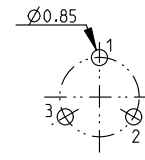
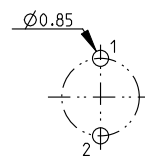
CONTACT CONFIGURATION	Contacts	Solder cup $\phi$	C	PIN $\phi$	Crimp cup $\phi$
104 A Z 051	2	1.86	13.5 12.2	0.50 0.70	-
104 A Z 040	3	1.86	13.5 12.2	0.50 0.70	1.78
104 A Z 037	4	1.18	14.5 14.2	0.50 0.63	1.18
104 A Z 087	4	0.79/2.48	14.5 11.7	0.50/1.60 0.63/1.60	-
104 A Z 053	5	1.18	14.5 14.2	0.50 0.63	-



Pin layout / PCB hole pattern for polarity A - View from F (4)



Polarity Z - View from F

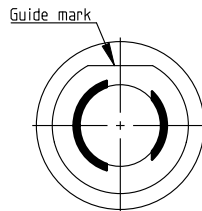
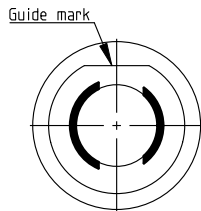
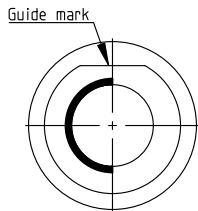


Keying codes (View from F)

Code 1 (-1xx)

Code 2 (-2xx)

Code 3 (-3xx)



All dimensions in mm

600476

Rev. 3a

Pages 1/3

Notes:  
1) All tolerances resulting from connector assembly are typically  $\pm 0.3\text{mm}$   
2) If receptacle is screwed directly into threaded hole, oversize thread by  $+0.05\text{mm}$   
3) For optimum crimping refer to available crimping manual.

4) Recommended PCB hole dimensions may be adjusted to application  
Part number example: DBP 104 A092-130

**fischer**  
CONNECTORS

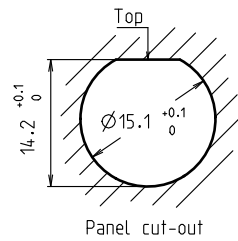
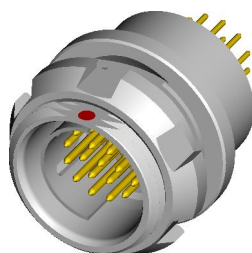
www.fischerconnectors.com

# DBP 104 Multipole Receptacles

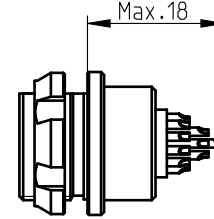
All dimensions see note 1)

Contact polarity A

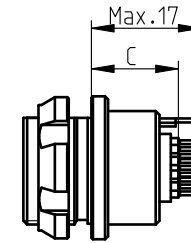
Contact polarity Z



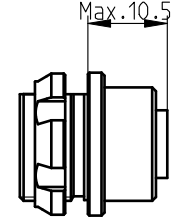
Panel cut-out



Solder (-x39/-x49)



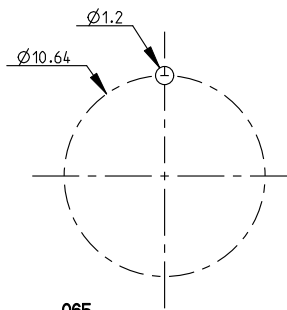
PCB (-x30/-x40)



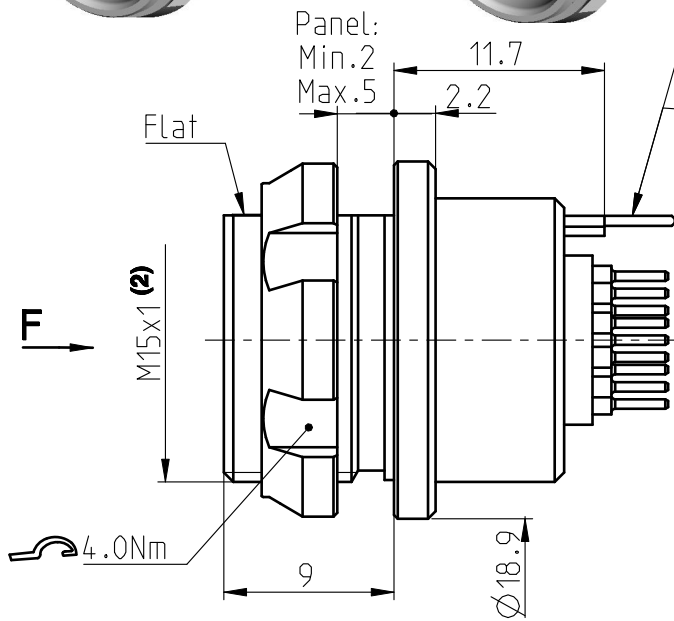
Crimp (-x50/-x60)<sup>(3)</sup>

**Optional ground pin  
For PCB version only  
(-x30/-x40)**

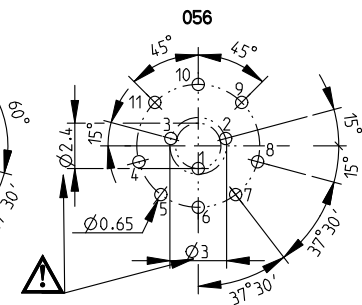
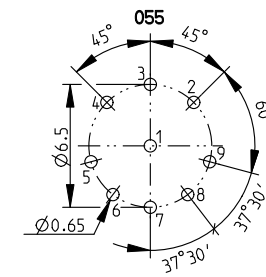
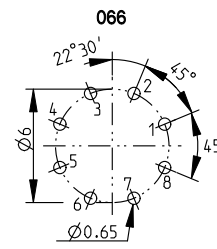
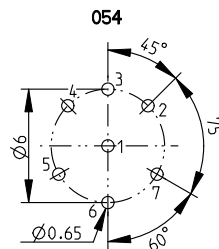
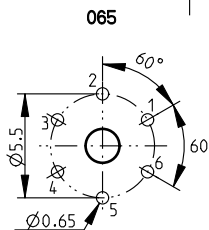
**Optional ground pin**



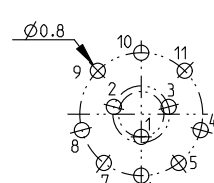
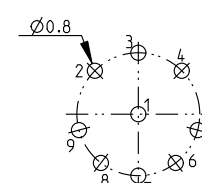
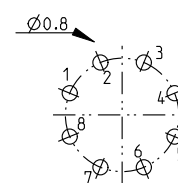
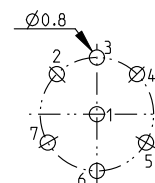
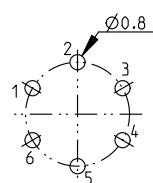
CONTACT CONFIGURATION	Contacts	Solder cup $\varnothing$	C	PIN $\varnothing$	Crimp cup $\varnothing$
104 A Z	065	6	0.79	14.5 0.50 12.2 0.63	0.80
104 A Z	054	7	0.79	14.5 0.50 12.2 0.63	-
104 A Z	066	8	0.79	14.5 0.50 12.2 0.63	0.80
104 A Z	055	9	0.79/1.18	14.5 0.50 14.2 0.63	-
104 A Z	056	11	0.79	14.5 0.50 12.2 0.63	0.80



Pin layout / PCB hole pattern for polarity A - View from F <sup>(4)</sup>



Polarity Z - View from F

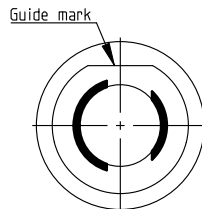
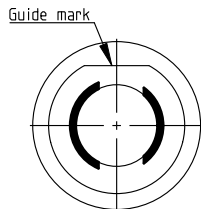
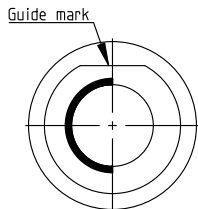


Keying codes (View from F)

Code 1 (-1xx)

Code 2 (-2xx)

Code 3 (-3xx)



All dimensions in mm

600476

Rev. 3a

Pages 2/3

Notes:

- 1) All tolerances resulting from connector assembly are typically  $\pm 0.3\text{mm}$
- 2) If receptacle is screwed directly into threaded hole, oversize thread by  $+0.05\text{mm}$
- 3) For optimum crimping refer to available crimping manual.

4) Recommended PCB hole dimensions may be adjusted to application  
Part number example : DBP 104 A092-130

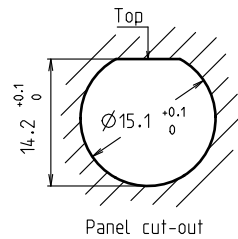
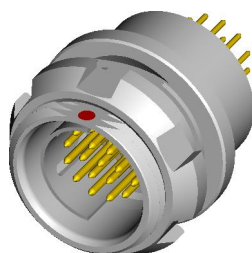
**fischer**  
CONNECTORS

www.fischerconnectors.com

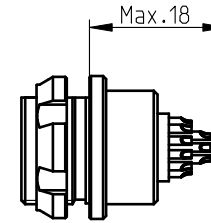
# DBP 104 Multipole Receptacles

Contact polarity A

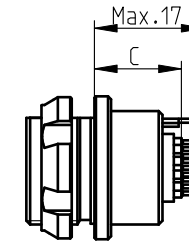
Contact polarity Z



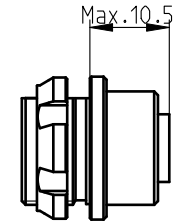
All dimensions see note 1)



Solder (-x39/-x49)



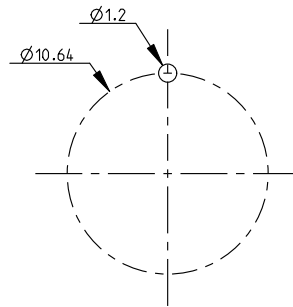
PCB (-x30/-x40)



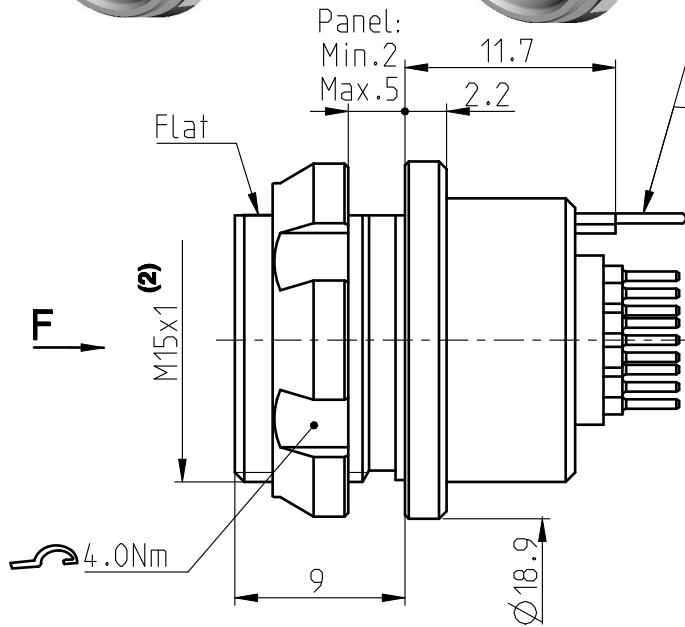
Crimp (-x50/-x60)<sup>(3)</sup>

Optional ground pin  
For PCB version only  
(-x30/-x40)

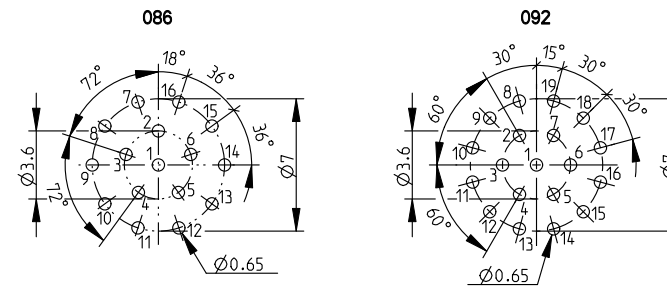
Optional ground pin



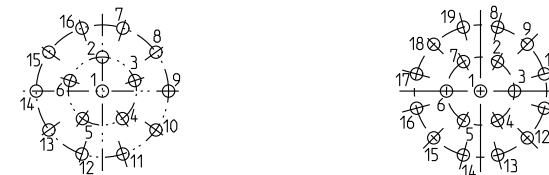
CONTACT CONFIGURATION	Contacts	Solder cup Ø	C	PIN Ø	Crimp cup Ø
104 A	086	16	11.5	0.50	0.60
104 Z	086	16	12.2	0.50	0.60
104 A	092	19	11.5	0.50	0.60
104 Z	092	19	12.2	0.50	0.60



Pin layout / PCB hole pattern for polarity A - View from F <sup>(4)</sup>



Polarity Z - View from F

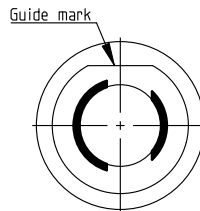
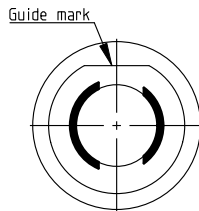
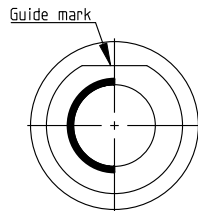


Keying codes (View from F)

Code 1 (-1xx)

Code 2 (-2xx)

Code 3 (-3xx)



All dimensions in mm

600476

Rev.

3a

Pages

3/3

Notes:

- 1) All tolerances resulting from connector assembly are typically  $\pm 0.3\text{mm}$
- 2) If receptacle is screwed directly into threaded hole, oversize thread by  $+0.05\text{mm}$
- 3) For optimum crimping refer to available crimping manual.

4) Recommended PCB hole dimensions may be adjusted to application  
Part number example: DBP 104 A092-130

**fischer**  
CONNECTORS

www.fischerconnectors.com