



FLINT INSTITUTE OF ARTS **ANNUAL REPORT** 2015-2016

cover image

Cesar Santander  
Spanish, b. 1947  
*Carnival*, n.d. (detail)  
Oil on board  
36 3/4 x 48 inches  
Gift of Mary Mallery Davis,  
by exchange, 2016.16

## About the Flint Institute of Arts

Incorporated in 1928, the FIA is a privately supported, non-profit organization. It is one of Michigan's most significant cultural and educational resources, serving people of all ages and interests.

The Institute is supported entirely through memberships, sales, rentals, admission and tuition, contributions from individuals and businesses, earned income from endowments and grants from trusts, government, and foundations.

The Institute's collections and temporary exhibitions are open daily (except national holidays). Art classes for adults and children, lectures, films, tours and other special events are also offered as an integral part of the Institute's educational mission.

The Flint Institute of Arts is an Equal Opportunity Employer and provides programs and services without regard to race, color, religion, national origin, age, sex or handicap.

The Flint Institute of Arts is tax-exempt under Section 501 (c) (3).

## Mission

To advance the understanding and appreciation of art for all through collections, exhibitions, and educational programs.



FLINT INSTITUTE OF ARTS

1120 E. Kearsley St.  
Flint, MI 48503  
810.234.1695 phone  
810.234.1692 fax  
[www.flintarts.org](http://www.flintarts.org)

Operating support for the Flint Institute of Arts is provided in part by the Charles Stewart Mott Foundation.



FIA exhibitions and programs are made possible in part with the support of the Michigan Council for Arts and Cultural Affairs, a partner agency of the National Endowment for the Arts.



## Contents

president's & director's report	3–4
exhibitions	5–6
films	7–8
videos	9
acquisitions	10–14
loans	15–17
deaccessions	18–19
art school	21
education	22
development	23–24
special events & facility rental	25–26
auxiliary groups	27–28
contributions	29–34
membership	35–45
financial statement	47–50
board, staff, & faculty	51

# President's & Executive Director's Report

Having just completed the final years of our 2011–2016 five-year strategic plan, we are pleased to report that we made significant progress in pursuit of the plan's goals to (1) Develop sustainable income, (2) Increase audiences, (3) Maintain the public trust, and (4) See technological advancement in all aspects of operations. In this milestone moment, it seemed fitting to review this year's accomplishments within a broader context as we close the book on the 2011–2016 strategic plan. The specifics of the 2015–16 fiscal year's performance and outcomes are described in detail in the pages following.

To begin, our greatest achievement was in meeting or exceeding expectations in all of the 164 action steps listed in the 12-page strategic plan document.

We spent \$12.3 million on operating expenses, an additional \$9.5 million on salaries, and \$1.5 million on capital expenditures while serving more than 750,000 people, and we ended each year in the black, thanks, in large part, to the C.S. Mott Foundation and the oversight of the Finance Committee of the Board. The number of grant requests and approvals increased each year, as did the income from those sources. We completed the \$10 million campaign started in 2007, and raised an additional \$4 million of the 2/3/4 campaign begun in 2014. Moreover, the number of business and corporate donors has rose dramatically.

We added 782 works of art to the collection—mostly through gifts. The most noteworthy include the Butterfield Horse, 100+ additions to the Asian collection, Fritz Von Uhde's *Les Chiens Savants (The Performing Dogs)*, Gregorio Lazzarini's *Judith and Holofernes*, and the Tiffany Window. In addition, the permanent loan by the Isabel Foundation of 156 works of contemporary glass, and over 400 ceramic objects from Dr. Robert and Deanna Harris Burger, led to the design and plan to build a new Contemporary Craft wing and Makerspace. What were formerly the Members Room and ramp hallway were repurposed into a Works

on Paper Gallery and the Ann K. Walch-Chan Decorative Arts Gallery. And the entire collection of 7,937 objects was photographed and digitally prepared for presentation on our new website which premieres in 2017.

Among the 106 exhibitions both on loan or assembled from our collection over the past five years, the most outstanding and highly attended include *Abstract Expressionism: Then and Now*; *The Golden Age of Painting*; *Toulouse-Lautrec and His World*; *The Art of Video Games*; *Beauty, Passion, and Bliss: 19th-Century Masterworks from the Dahesh Museum of Art*; *French Twist: Masterworks of Photography from Man Ray to Atget*; and *Common Ground*—a collaboration with the Kalamazoo Institute of Arts and the Muskegon Museum of Art. We presented more than 500 screenings of films and videos and more than 50 lectures by some of the world's greatest scholars. To accompany many of the exhibitions, we produced a number of scholarly publications including a book on the Bray Gallery Collection, and catalogs for *Political Cartoons*, Edmund Lewandowski, the Perry Collection, *The Golden Age of Painting*, *Pure Abstraction*, and The Burger Collection of Ceramics.

Collaborations with our Cultural Center neighbors have expanded to include security and IT sharing as well as master planning of the Cultural Center campus. Other collaborations include 30 Curatorial interns from University of Michigan-Flint; Michigan State University; Oakland University; Saginaw Valley State University; Mott Community College; Wayne State University; Central Michigan University; and Kettering University.

Growing demand for rentals and increases in sales in both the Museum Shop and the Palette Café resulted in higher visitation and earned income that led to the creation of a new Member and Guest Relations department as well as a new standing committee of the Board.

The FIA Art School expanded in size, number of programs, and student



Executive Director John B. Henry and President Dean Yeotis

enrollment; and after the new addition is complete, it will be the fifth largest art museum school in the country. In 2012, FIA outreach ranked No. 1 per capita encounters among the top art museums in the country. Since then, outreach programming has grown 25 percent. Also, since 2011, the FIA has introduced new programs for underserved audiences, including baby tours; Head Start programs in collaboration with Genesee County School District; family resource kits in collaboration with Flint and Genesee Literacy Network; and a program for people with mild to moderate memory loss.

Through their generous contribution of time, energy, and dedication, volunteers continued to make possible many of the successes we would not

have achieved alone. Great leadership and planning by the Gala, Wine Tasting, The PARTY, and Art on Tap committees and volunteers raised \$400,000 over the past five years. The Founders Society annually sponsored the Graphics Gallery, purchased books for the Library, contributed to temporary exhibitions, as well as presented the First Frost fundraiser. The Friends of Modern Art organized the annual Art Fair, sponsored exhibitions each year, and purchased works of art for the permanent collection.

These are just a few of the accomplishments from the last five years, and the staff joins me in thanking the Trustees, Founders Society, Friends of Modern Art, and all the volunteers who have contributed countless hours to achieve our many successes.

A handwritten signature in black ink, appearing to read 'Dean Yeotis'.

**Dean Yeotis**

*President*

A handwritten signature in black ink, appearing to read 'John B. Henry'.

**John B. Henry**

*Executive Director*

# Exhibitions

In the 2015–16 fiscal year, the Flint Institute of Arts offered visitors 15 innovative exhibitions aimed to delight, inspire, and educate our visitors, from photographs to quilts and from ceramics to large-scale watercolors. As one of the FIA's most visible programming activities, exhibitions promotes greater audience visitation, which increases awareness of the museum's permanent collection and other FIA programs. Because the FIA is the only institution of its kind in Flint, Genesee County, and the region north of the Detroit metropolitan area, it is important that exhibition programming explores a wide range of artistic concepts and diverse cultures.

Visitors had the opportunity to see over 620 works of art, including paintings, works on paper, sculpture, textile, and decorative arts, all from various cultures and time periods. Every year, the Curatorial Department organizes exhibitions drawn from the museum's extensive collection of more than 8,000 works of art, as well as borrows collections from artists, collectors, museums, and traveling exhibition organizers. In this fiscal year, 69,540 people explored the galleries at the FIA.

At the end of the 2015 fiscal year, *Beauty, Passion and Bliss: 19th-Century Masterworks from the Dahesh Museum of Art* took viewers into the world of the 19th-century French Academy, with 50 sculptures and paintings that dealt with classical mythology, biblical subjects, landscape and animals, genre, and Orientalism. *Style Moderne: French Art Deco Enameled Glass from the Ed & Karen Ogul Collection* featured over 50 beautifully crafted items of Art Deco enameled glass. The graphic work of Edvard Munch invited viewers into the inner workings of the artist's mind. Most famously known for his painting *The Scream*, Munch's etchings, woodcuts, and lithographs are emotional and expressive.

In fall 2015, visitors saw the important role of photography in the history of art. *French Twist: Masterworks of Photography from Atget to Man Ray* featured over 100 vintage prints from photographers like Eugène Atget, Henri Cartier-Bresson, and Man Ray. Art Historian Juliet Hacking discussed the lives, works, and impact of these photographers in her lecture, *Modernism, Surrealism, Documentary: French Photography 1900–1940*. The influence of the camera was seen in *Photorealism*, where 15 works from the FIA's collection explored how artists used photography as a reference to create incredibly realistic works on paper. Also drawn from the museum's permanent collection, *Decorative to Dangerous: The Art of Metalwork*, explored how craftsmen transformed various metals, from precious to commonplace, into fantastic works of art.

To foster the collecting spirit in our region, the FIA organized *The Art of Collecting*. More than 100 paintings, prints, drawings, and sculptures on consignment from Detroit, Chicago, and New York were available for purchase. FIA Executive Director John Henry and Curator Tracee Glab conducted tours of the exhibition to discuss trends in the art market and the special characteristics of individual works. From Old Masters to contemporary artists, *Collecting Prints* offered an opportunity to show the last five years of collecting works on paper that has taken place at the FIA. In early 2016, *From Heart to Hand: African American Quilts from the Montgomery Museum of Fine Arts* surveyed 20th-century African American quilt artists from the South who created quilts as a means of warmth and as artistic statements. At the Community Gala, artist Yvonne Wells discussed her quilts with Mott-Warsh Collection Curator Stephanie James in a lively question and answer session. In the graphics gallery, *Jacob Lawrence: The Legend of John Brown* featured 22 works in a series that follows the tale of controversial abolitionist John Brown.

At the close of the fiscal year, visitors had the chance to explore the diversity of styles and intense creativity of expression of contemporary ceramics in *Function, Form, and Fantasy: Ceramics from the Dr. Robert and Deanna Harris Burger Collection*. From small vessels to large figurative forms, the exhibition was both playful and thought provoking. Guest lecturer Judith Schwartz discussed the fascinating aspects of collecting ceramics. The theme of ceramics continued in *Clay Through Time: Ancient to Contemporary Ceramics*. From humble bowls to ornate sculptures, this exhibition showed the aesthetic and functional range of the medium of clay. *Land & Water: Great Lakes Regional Paintings* focused on artists who found inspiration in nature, depicting humanity's relationship with our environment. This exhibition opened in conjunction with the Flint Cultural Center's Earth Day celebration. The Graphics Gallery offered two very different, yet fascinating, spring and summer exhibitions. *The Engraver and Mr. Turner* included 31 engravings after the paintings of J.M.W Turner. The small, highly detailed black-and-white images were the engraver's attempt at re-creating the artist's expressive brushstroke and distinctive painting style. Known for his monumental paintings celebrating flora and fauna, Joseph Raffael's work in *Moving Toward the Light* took the viewer deep into the mysteries of nature. Eleven large-scale watercolors of fish, flowers, and shells brightened up the gallery walls throughout the summer.



From the exhibition *Function, Form, and Fantasy*

Irina Zaytceva  
 Russian, b. 1957  
*Twins*, 2013  
 Porcelain  
 10 3/4 x 7 1/4 x 3 5/8 inches  
 Collection of Dr. Robert and Deanna Harris Burger

*Style Moderne: French Art Deco Enameled Glass from the Ed and Karen Ogul Collection*  
 3.21.15 – 9.13.15

*Beauty, Passion, and Bliss: 19th-Century Masterworks from the Dahesh Museum of Art*  
 5.17.15 – 8.16.15

*Edvard Munch: Works on Paper*  
 7.5.15 – 9.6.15

*French Twist: Masterworks of Photography from Atget to Man Ray*  
 9.12.15 – 11.8.15

*Photorealism*  
 9.12.15 – 11.15.15  
 Sponsored by Founders Society

*Decorative to Dangerous: The Art of Metalwork*  
 10.3.15 – 4.3.16

*Collecting Prints*  
 11.21.15 – 1.17.16  
 Sponsored by Founders Society

*The Art of Collecting*  
 11.27.15 – 1.3.16

*Jacob Lawrence: The Legend of John Brown*  
 1.23.16 – 3.26.16  
 Sponsored by Founders Society

*From Heart to Hand: African American Quilts from the Montgomery Museum of Fine Arts*  
 1.24.16 – 4.10.16  
 Sponsored by Michigan Humanities Council & National Endowment for the Humanities

*The Engraver & Mr. Turner*  
 4.2.16 – 6.12.16  
 Sponsored by Founders Society

*Clay Through Time: Ancient to Contemporary Ceramics*  
 4.23.16 – 10.30.16

*Function, Form, and Fantasy: Ceramics from the Dr. Robert and Deanna Harris Burger Collection*  
 5.7.16 – 8.14.16  
 Sponsored by Friends of Modern Art

*Moving Toward the Light*  
 6.18.16 – 9.18.16  
 Sponsored by Founders Society

# Films

The FIA Film Program is intended to offer motion pictures that appeal to a broad and diverse audience in the local community. The program is comprised of a weekly schedule of film series and festivals in the FIA Theater. The main series, sponsored by the Friends of Modern Art and held on Fridays, Saturdays, and Sundays, accounted for 45 titles over 39 weeks from September 2015 until June 2016.

A total of 9,406 patrons—among the highest yearly turnouts ever—attended film events at FIA in 2015–16. In its seventh year, the FIA Film Society continued to enable members to take a stronger interest in the program.

Among the films shown at FIA in 2015–16 were *Amy*, the 2015 Academy Award winner for Best Documentary; *Son of Saul*, which won the Academy Award for Best Foreign Language Film; and multiple Oscar-nominated films, such as *Cartel Land* (Mexico), *Gueros* (Mexico), *A War* (Denmark), *Mustang* (Turkey), and *Embrace of the Serpent* (Colombia).

The FIA was the site of the local premiere of *T-Rex*, the award-winning documentary about Flint-born, Olympic gold-medal-winning boxer Claressa Shields. 435 people attended two screenings of the film. *T-Rex* returned to the museum during the FOMA season for a second engagement.

An occasional Thursday night “Best of FOMA” film series supplemented the weekend offerings, providing viewers the opportunity to see classic art films or return looks at titles shown at the FIA in recent years.

In addition to the FOMA-funded titles, the FIA partnered with the Flint Jewish Federation for the 12th annual Karen Schneider Jewish Film Festival of Flint, and with the local nonprofit Communities First for a four-movie series of African American-themed films.

## Film Program

The FIA Theater screened these films in the main Friends of Modern Art series:

### September

*My Old Lady*  
*Infinitely Polar Bear*  
*Merchants of Doubt*

### October

*About Elly*  
*Jimmy's Hall*  
*Gemma Bovery*  
*The Connection*  
*The 100-Year-Old Man Who Climbed  
 Out the Window and Disappeared*

### November

*Best of Enemies*  
*I'll See You in My Dreams*  
*The Diary of a Teenage Girl*  
*Amy*

### December

*The Stanford Prison Experiment*  
*Grandma*  
*The Farewell Party*

### January

*Labyrinth of Lies*  
*Experimenter*  
*T-Rex*  
*Sleeping With Other People*

### February

*A Ballerina's Tale*  
*Man Up*  
*Gueros*  
*Cartel Land*

### March

*Chi-Raq*  
*45 Years*  
*A War*  
*The Wonders*

### April

*Son of Saul*  
*Embrace of the Serpent*  
*Academy Award Nominated Shorts*  
*Mustang*  
*Hitchcock/Truffaut*

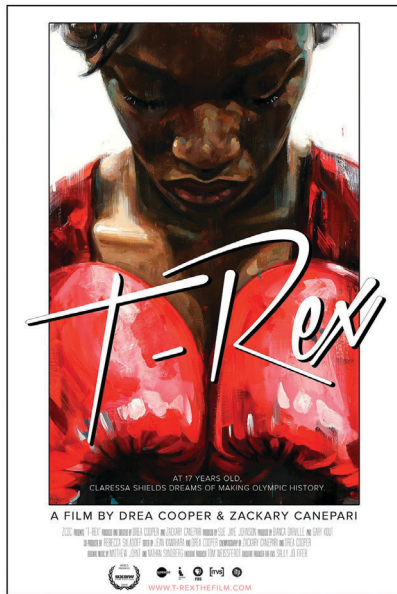
### May

*Macbeth*  
*A Perfect Day*  
*Born to Be Blue*  
*Songs My Brothers Taught Me*

### June

*My Golden Days*  
*Marguerite*  
*The Lady in the Van*





FOMA series are sponsored by:

Friends of Modern Art  
Guardian Alarm  
Merrill Lynch  
Michigan Public Radio

These films were shown in the “Best of FOMA” series:

**October**

*The Girl With the Dragon Tattoo*  
*The Girl Who Played With Fire*  
*The Girl Who Kicked the Hornet’s Nest*

**March**

*Blood Simple*

**April**

*Harold and Maude*

**May**

*Rope*

These films were shown in the African American Film Series:

**November**

*Brooklyn Boheme*

**December**

*An American Ascent*

**January**

*The Bicycle*

**February**

*Last Night*

## Special Events

### FIA Film Society Preview

August 26. FIA Associate Curator of Film Ed Bradley and Michael Rucks presented a preview of the Friends of Modern Art series, with film clips. 115 people attended.

### Karen Schneider Jewish Film Festival of Flint

May 15–19. In the 12th annual local event—a spinoff of the Detroit-based Lenore Marwil Jewish Film Festival—five feature-length films were shown in a co-sponsorship with the Flint Jewish Federation. The films screened were *In Search of Israeli Cuisine*, *Rosenwald*, *Apples From the Desert*, *Rock in the Red Zone* and *Dough*. During a preview event, the movie *Jon Imber’s Left Hand* was shown. 421 people attended in all.

## Film Society

The 2015–16 season marked the seventh year of the FIA Film Society, a group intent on increasing interest in, and funding for, the film program.

By season’s end, the society included 76 members and sponsors. Most of them were at the basic membership level of \$100, which granted the donor 36 tickets to FOMA films, listings in the FIA Members Magazine and Annual Report, and access to monthly e-mailed newsletters about upcoming movies.

Higher sponsorship levels gained donors listings on screen before each film presentation, extra tickets and a presence on the FIA website.

Patrons who chose to use all or most of their 36 tickets for the \$100 level saved a good deal of money over paying the standard admission fees.

# Videos

The Fleckenstein Video Gallery is a distinctive museum space dedicated to the exhibition of outstanding works by video artists. The gallery operates all day, every day the museum is open, and features a different artist each month. This year, nine videos and two video installations touched on themes of pop culture, religion, mass surveillance, astrology, and much more. The gallery is ideally suited for single-channel videos that are played on a continuous loop and projected onto a 10x12 feet screen as well as small video installations.

Tim Tate  
**Opulent Surveillance**  
 Courtesy of the Artist and Habatat  
 Galleries, Royal Oak, Michigan

## *EAI 40th Anniversary Intro*

7.1.15 – 7.31.15

by Takeshi Murata & sound by Robert Beatty, 2011

## *THE BIBLE*

8.1.15 – 8.31.15

by Tommy Hartung, 2014

## *The Dark, Krystle*

9.1.15 – 9.30.15

by Michael Robinson, 2013



## *I Want to See How You See*

10.1.15 – 10.31.15

by Pipilotti Rist, 2003

## *Brilliant Noise*

11.1.15 – 11.30.15

by Semiconductor, 2006

## *The Albatross*

12.1.15 – 12.31.15

by Paul Bush, 1998

## *The Healing Polyopticon*

1.1.16 – 2.29.16

by Tim Tate, 2014

## *Opulent Surveillance*

1.1.16 – 2.29.16

by Tim Tate, 2015

## *Busby Berkeley 2.0*

3.1.16 – 3.31.16

by Rachel Rampleman, 2014

## *Bellmer Burlesque*

4.1.16 – 4.30.16

by Rachel Rampleman, 2013

## *Thinking Hurts Too Much*

5.1.16 – 6.30.16

by Cameron Gray, 2013

# Acquisitions

The Flint Institute of Arts' permanent collection is a resource for creating exhibitions and developing educational programs for a diverse public, including scholars and students.

The growth of the collection is supported by gifts from civic-minded individuals who donate funds or works of art to the permanent collection. In addition, the Curatorial Department and the Collections Committee work together to identify strategies and seek new funds for the acquisition of artworks that meet museum objectives and the expectations of an ever inquisitive and knowledgeable public. The staff conducts work essential to the care and management of the collection, including research, documentation, preservation, presentation, and interpretation.

## Enrique Chagoya

American, b. Mexico, 1953

### *My Tattoos*, 2010

Edition Varie on paper  
29 3/4 x 14 inches

Gift of Robert and Sharon Yoerg,  
2015.46

## George Herms

American, b. 1935

### *Eruption Center*, 2011

Monoprint on paper  
29 3/4 x 14 inches

Gift of Robert and Sharon Yoerg,  
2015.47

## Ross K. Jones

American, b. 1979

### *Untitled*, 2010

Edition Varie on paper  
29 3/4 x 14 inches

Gift of Robert and Sharon Yoerg,  
2015.48

## Mary Joy

American

### *Untitled*, 2010

Edition Varie on paper  
14 x 29 3/4 inches

Gift of Robert and Sharon Yoerg,  
2015.49

## Kathryn Kain

American, b. 1956

### *Little Tattooed Mermaid*, 2010

Edition Varie on paper  
29 3/4 x 14 inches

Gift of Robert and Sharon Yoerg,  
2015.50

## Jen Lee

American

### *True Love*, 2010

Edition Varie on paper  
14 x 29 3/4 inches

Gift of Dr. and Mrs. Lorry Frankel,  
2015.51

## Kara Maria

American, b. 1968

### *The Animal that Lives in Your Heart*, 2010

Edition Varie on paper  
29 3/4 x 14 inches

Gift of Dr. and Mrs. Lorry Frankel,  
2015.52

## Jeff Rassier

American, b. 1968

### *You Krampus My Style*, 2010

Edition Varie on paper  
29 3/4 x 14 inches

Gift of Dr. and Mrs. Lorry Frankel,  
2015.53

## Kahlil Rintye

American, b. 1962

### *Untitled*, 2010

Edition Varie on paper  
29 3/4 x 14 inches

Gift of Dr. and Mrs. Lorry Frankel,  
2015.54

## Richard Shaw

American, b. 1941

### *Untitled*, 2011

Edition Varie on paper  
13 1/2 x 29 1/2 inches

Gift of Dr. and Mrs. Lorry Frankel,  
2015.55

## Albert G. Richards

American, 1917–2008

### *Tulip*, 1996

Radiograph  
14 x 11 inches

Gift of Dr. Seymour and Barbara K.  
Adelson, 2015.56

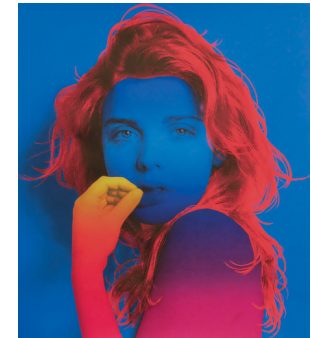
## Man Ray

American, 1890–1976

### *Personnage*, 1975

Lithograph on paper  
23 1/4 x 18 1/2 inches

Gift of Marilyn Kopp and Romy  
Carlson in memory of John Kopp,  
2015.57



## Jenny Morgan

American, b. 1982

### *True Blue*, 2015 ▲

Silkscreen on paper  
27 x 24 inches

Gift of the artist and Driscoll  
Babcock, New York, 2015.58



**Tobias Möhl**  
Danish, b. 1970  
*5 Part Black Twill Collection*,  
2015 ▲  
Blown glass vessels in wallmounted  
light box  
36 3/4 x 61 1/2 x 10 3/4 inches  
Museum purchase with funds  
donated by Mr. William S. White,  
2015.59

**Giovanni Domenico Ferretti**  
Italian, 1692–1768  
*Aurora and the Hours of Sunrise*,  
ca. 1730s ▶  
Oil on canvas  
11 1/4 x 17 3/4 inches  
Museum purchase with funds  
from the Jill Ford Murray  
Irrevocable Trust in memory of her  
parents, Carlotta Espy Ford and  
George Ross Ford, Jr., and her  
grandparents, Grace Miller Ford and  
George Ross Ford, 2015.60

**Bob Thompson**  
American, 1937–1966  
*Study for St. George and the  
Dragon*, 1961  
Crayon on paper  
21 x 14 inches  
Museum purchase with funds from  
the Collection Endowment, 2015.61

**Nefertiti Goodman**  
American, b. 1949  
*Les Oiseaux au Jardin d'Or II*,  
2004/2016  
Linocut with hand-painted  
watercolor and gouache  
44 x 36 inches  
Museum purchase with funds raised  
from the Flint Print Club, 2015.62

**Douglas Bourgeois**  
American, b. 1951  
*Lyricist*, 2013  
Hand-colored linocut on paper  
18 x 12 inches  
Museum purchase with funds raised  
from the Flint Print Club, 2015.63



**Shepard Fairey**  
American, b. 1970  
*Imperial Glory*, 2012  
Silkscreen on paper  
56 5/8 x 42 5/8 inches  
Museum purchase with funds raised  
from the Flint Print Club, 2015.64

**Wangechi Mutu**  
American, b. Kenya, 1972  
*Second Born*, 2013  
24 kt gold, collagraph, relief, digital  
printing, collage, and hand coloring  
on paper  
36 x 43 inches  
Museum purchase with funds from  
the Collection Endowment, 2015.65

Vili  
Democratic Republic of Congo  
*Female Nkisi Figure*, Early–  
mid-20th century ▶  
Wood  
8 1/4 x 3 1/4 x 2 3/4 inches  
Museum purchase with funds from  
the Collection Endowment, 2015.66

Yombe  
Democratic Republic of Congo  
*Flywhisk*, Early–mid-20th  
century  
Wood, metal and buffalo tail  
17 1/2 x 3 x 2 inches  
Museum purchase with funds from  
the Collection Endowment, 2015.67

**Karsten Creightney**  
American, b. 1976  
*Halftone Flower*, 2015  
Lithograph on paper  
18 x 12 1/2 inches  
Commissioned for the Flint Print  
Club, 2015.68

**Shimon Okshteyn**  
American, b. Ukraine, 1951  
*Reflections #6*, 2007  
Graphite and charcoal on canvas,  
with mixed media on mirror  
61 x 74 x 9 inches  
Gift of Dr. Robert and Deanna  
Harris Burger, 2015.69

**Sunkoo Yuh**  
American, b. South Korea, b. 1960  
*Horn Blower*, 2010  
Glazed and polychrome stoneware  
35 x 24 x 23 inches  
Gift of Dr. Robert and Deanna  
Harris Burger, 2015.70



**Paula Winokur**  
American, b. 1935  
*Cloud Vase*, 1986  
Glazed ceramic  
11 x 9 x 6 inches  
Gift of Dr. Robert and Deanna  
Harris Burger, 2015.71

**Patti Warashina**  
American, b. 1940  
*Storm Warning*, 2003  
Polychrome earthenware  
37 x 10 x 8 inches  
Gift of Dr. Robert and Deanna  
Harris Burger, 2015.72



**Peter VandenBerge**  
American, b. Netherlands, b. 1935  
*Colonel Wetneck of the East  
Indies*, 1977 ▲  
Polychrome earthenware  
68 x 28 x 17 1/2 inches  
Gift of Dr. Robert and Deanna  
Harris Burger, 2015.73

**Tom Turner**  
American, b. 1945  
*Untitled*, 2003  
Porcelain  
7 1/2 x 7 1/2 x 7 1/2 inches  
Gift of Dr. Robert and Deanna  
Harris Burger, 2015.74

**Kathy Triplett**  
American, b. 1949  
*A Glimpse Series*, 2001  
15 glazed and polychrome  
stoneware tiles  
10 x 10 x 1 (each) inches  
Gift of Dr. Robert and Deanna  
Harris Burger, 2015.75

**Alev Siesbye**

Turkish, b. 1938

**Untitled**, 1987Glazed stoneware  
3 1/2 x 8 x 8 inchesGift of Dr. Robert and Deanna  
Harris Burger, 2015.76**Ken Shores**

American, 1928–2014

**No 8-4 Fetish**, 1974Gold luster glazed ceramic with  
whitewash and applied pheasant  
feathers

26 x 11 x 6 inches

Gift of Dr. Robert and Deanna  
Harris Burger, 2015.77**Jeff Shapiro**

American, b. 1949

**Untitled**, 1999Glazed stoneware  
2 1/4 x 3 1/4 x 3 1/4 inchesGift of Dr. Robert and Deanna  
Harris Burger, 2015.78**Frances Senska**

American, b. Cameroon, 1914–2009

**Untitled**, 2000 ▶Polychrome stoneware  
7 x 5 x 5 inchesGift of Dr. Robert and Deanna  
Harris Burger, 2015.79**Keith Schneider**

American, b. 1956

**Dog Boy**, 1999Polychrome stoneware  
28 x 6 x 5 inchesGift of Dr. Robert and Deanna  
Harris Burger, 2015.80**Edwin Scheier**

American, 1910–2008

**Mary Scheier**

American, 1910–2007

**Untitled**, 1983Glazed stoneware  
10 7/8 x 5 x 5 inchesGift of Dr. Robert and Deanna  
Harris Burger, 2015.81**Trish Ouchi**

Canadian

**Untitled**, 2003Glazed raku stoneware  
5 1/2 x 4 1/2 x 4 1/2 inchesGift of Dr. Robert and Deanna  
Harris Burger, 2015.82**Malene Müllertz**

Danish, b. 1949

**Untitled**, 1979Glazed stoneware  
5 x 16 x 9 inchesGift of Dr. Robert and Deanna  
Harris Burger, 2015.83**Ricky Maldonado**

American, b. 1953

**Untitled**, 2003Polychrome earthenware  
7 x 5 x 5 inchesGift of Dr. Robert and Deanna  
Harris Burger, 2015.84**Michael Magdeleno**

American

**Untitled**, 2000Glazed stoneware  
2 1/2 x 19 3/4 x 19 3/4 inches  
Gift of Dr. Robert and Deanna  
Harris Burger, 2015.85**Oh-Hoon Kwon**

Korean, b. 1947

**Autumn Gate**, 2013 ▲Glazed ceramic  
14 x 16 x 4 inchesGift of Dr. Robert and Deanna  
Harris Burger, 2015.86**James Kraft**

American, b. 1948

**Untitled #2**, 2003Stoneware  
8 x 11 x 6 inchesGift of Dr. Robert and Deanna  
Harris Burger, 2015.87**Barbara Knutson**

American

**Fish Box**, 2006

Glazed porcelain

10 1/4 x 5 x 5 1/2 inches

Gift of Dr. Robert and Deanna  
Harris Burger, 2015.88**Phyllis Kloda**

American, b. 1957

**Untitled**, 2002Glazed gilt and polychrome  
porcelain

10 x 6 x 6 inches

Gift of Dr. Robert and Deanna  
Harris Burger, 2015.89**William Kidd**

American

**Untitled**, 2008Glazed and polychrome  
earthenware

8 x 7 x 7 inches

Gift of Dr. Robert and Deanna  
Harris Burger, 2015.90**Isaac Issacsen**

Swedish

**Untitled**, 2000Crystal glazed ceramic  
5 x 5 x 5 inchesGift of Dr. Robert and Deanna  
Harris Burger, 2015.91**Thomas Hoadley**

American, b. 1948

**Untitled**, n.d. ◀Polychrome stoneware  
7 x 11 x 9 inchesGift of Dr. Robert and Deanna  
Harris Burger, 2015.92**Wayne Higby**

American, b. 1943

**Corridor Gap #12**, 1999

Glazed earthenware

8 x 8 1/2 x 4 inches

Gift of Dr. Robert and Deanna  
Harris Burger, 2015.93**Mark Hewitt**

American, b. England, 1956

**Ash and Salt Glaze Two Gallon Jar with Blue Glass Runs**, 1993Wood fired slip glazed stoneware  
16 x 10 x 10 inchesGift of Dr. Robert and Deanna  
Harris Burger, 2015.94**Mark Hewitt**

American, b. England, b. 1955

**Untitled**, 1993Wood fired slip glazed stoneware  
16 x 11 x 11 inchesGift of Dr. Robert and Deanna  
Harris Burger, 2015.95**Larry Halvorsen**

American, b. 1948

**Untitled**, 2000Polychrome ceramic  
8 x 10 x 6 inchesGift of Dr. Robert and Deanna  
Harris Burger, 2015.96



**David Gilhooly**  
American, 1943–2013  
**Untitled (Frog Mountie and Indian Plaque)**, 1995  
Glazed stoneware  
12 x 16 x 3 inches  
Gift of Dr. Robert and Deanna Harris Burger, 2015.100

**David Gilhooly**  
American, 1943–2013  
**Mother-in-Law Mummy of the Neroic Period**, 1972  
Glazed stoneware  
8 x 32 x 17 inches  
Gift of Dr. Robert and Deanna Harris Burger, 2015.101

**Barry and Rosalind Hage**  
American  
**Untitled**, 2000 ▲  
Glazed stoneware  
14 x 7 x 7 inches  
Gift of Dr. Robert and Deanna Harris Burger, 2015.97

**Ray Gross**  
American, b. 1958  
**Untitled**, 2000  
Glazed and polychrome stoneware  
11 x 6 x 6 inches  
Gift of Dr. Robert and Deanna Harris Burger, 2015.98

**Victoria Gold**  
American, b. 1945  
**Untitled**, 1983  
Polychrome stoneware  
22 x 14 x 6 inches  
Gift of Dr. Robert and Deanna Harris Burger, 2015.99



**Ken Ferguson**  
American, 1928–2004  
**Lidded Teapot**, 2001  
Raku stoneware  
26 x 11 x 11 inches  
Gift of Dr. Robert and Deanna Harris Burger, 2015.104

**Eric Eley**  
American, b. 1976  
**Untitled**, 2001  
Glazed and polychrome ceramic  
6 x 26 x 12 inches  
Gift of Dr. Robert and Deanna Harris Burger, 2015.105

**Malcolm Davis**  
American, 1937–2011  
**Untitled**, 1996  
Glazed stoneware  
4 x 7 x 7 inches  
Gift of Dr. Robert and Deanna Harris Burger, 2015.106

**Doug Casebeer**  
American, b. 1956  
**Untitled (Vase)**, 2004  
Glazed stoneware  
13 1/4 x 6 x 6 inches  
Gift of Dr. Robert and Deanna Harris Burger, 2015.107

**Robert Brady**  
American, b. 1946  
**Untitled**, 2001  
Polychrome earthenware  
18 x 6 x 5 inches  
Gift of Dr. Robert and Deanna Harris Burger, 2015.108

**Carol Gentithes**  
American, b. 1957  
**Madagascar**, 2003 ▲  
Glazed and polychrome porcelain  
4 3/4 x 4 x 10 inches  
Gift of Dr. Robert and Deanna Harris Burger, 2015.102

**Matt Fiske**  
American, b. 1985  
**Untitled**, 2001  
Glazed porcelain  
2 1/2 x 3 1/4 x 3 1/4 inches  
Gift of Dr. Robert and Deanna Harris Burger, 2015.103

**Nicholas Bernard**  
American, b. 1958  
**Untitled**, 1982  
Glazed earthenware  
6 3/4 x 4 3/4 x 4 3/4 inches  
Gift of Dr. Robert and Deanna Harris Burger, 2015.109

**Nicholas Bernard**  
American, b. 1958  
**Untitled**, 2004  
Glazed earthenware  
7 1/2 x 5 x 5 inches  
Gift of Dr. Robert and Deanna Harris Burger, 2015.110

**Jim Adamson**  
American, b. 1939  
**Untitled**, 1977  
Glazed earthenware  
1 x 18 x 18 inches  
Gift of Dr. Robert and Deanna Harris Burger, 2015.111

**Dean Adams**  
American, b. 1966  
**Green Dickens**, 2000  
Glazed porcelain  
9 1/2 x 6 1/4 x 5 1/2 inches  
Gift of Dr. Robert and Deanna Harris Burger, 2015.112

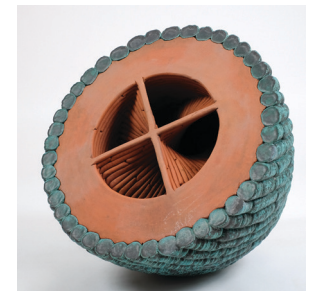
**Graham Marks**  
American, b. 1951  
**Untitled**, 1979 ►  
Glazed and unglazed earthenware  
29 x 27 x 29 inches  
Gift of Dr. Robert and Deanna Harris Burger, 2015.113

**John Utgaard**  
American, b. 1974  
**Connected Domes**, 2002  
Glazed stoneware  
18 x 30 x 30 inches  
Gift of Dr. Robert and Deanna Harris Burger, 2015.114

**Judith Gilmour**  
American, 1937–2003  
**Untitled (Black Tower)**, 2000  
Polychrome stoneware  
14 x 4 x 4 inches  
Gift of Dr. Robert and Deanna Harris Burger, 2015.115

**Mariko Paterson**  
Canadian, b. 1971  
**Willow Bago**, 2014 ►  
Porcelain  
20 1/4 x 15 3/8 x 7 1/4 inches  
Gift of Dr. Robert and Deanna Harris Burger, 2015.116

**James Makins**  
American, b. 1946  
**Cylindrical Flower Vase**, 1989  
White glazed porcelain  
9 x 3 1/2 x 2 7/8 inches  
Gift of Dr. Robert and Deanna Harris Burger, 2015.117



**Les Lawrence**

American  
*Untitled*, 1973  
 Screenprint on porcelain with wire  
 19 1/2 x 5 1/2 x 4 1/2 inches  
 Gift of Dr. Robert and Deanna  
 Harris Burger, 2015.118

**Maurice Dumont**

French, 1869–1899  
*Sappho*, 1895  
 Gypsograph on paper  
 10 1/2 x 14 3/4 inches  
 Gift of Dr. Jamile T. Lawand,  
 2015.119

**Valentin Popov**

American, b. Ukraine, 1956  
*Berlin, Rain*, 2005  
 Oil on canvas  
 35 x 52 inches  
 Gift of Frederic Webster, 2015.120

**Valentin Popov**

American, b. Ukraine, 1956  
*The Torrents of Spring*, 1983–86  
 21 etchings on paper  
 15 x 11 1/4 inches each  
 Gift of Frederic Webster, 2015.121

**Marta Klonowska**

Polish, b. 1964  
*Fenek*, 2011  
 Glass  
 20 x 36 x 20 inches  
 Museum purchase with funds from  
 Mr. & Mrs. Thomas Lillie and The  
 Sheppy Dog Fund, Dr. Alan Klein,  
 Advisor, 2016.1

**Yombe People**

Democratic Republic of Congo  
*Colonial Figure*, early–mid-20th  
 century  
 Wood  
 17 1/2 x 5 3/4 x 4 3/8 inches  
 Gift of Marlene and Reynold Kerr,  
 2016.2

**Sam Jury**

English  
*All Things Being Equal*, 2009  
 Single channel, looped video  
 11 minutes, 58 seconds  
 Gift of Cynthia Griffin, 2016.3

**Jan Matulka**

American, b. Czechoslovakia,  
 1890–1972  
*Two Nudes*, ca. 1923  
 Oil on canvas  
 36 x 27 1/2 inches  
 Gift of the Estate of Jan Matulka,  
 2016.4

**Jan Matulka**

American, b. Czechoslovakia,  
 1890–1972  
*Untitled (Four Nudes in a  
 Landscape)*, 1923  
 Etching and drypoint on paper  
 10 3/4 x 13 15/16 inches  
 Gift of the Estate of Jan Matulka,  
 2016.5

**Yvonne Wells**

American, b. 1939  
*Rosa Parks*, 2008  
 Cotton/polyester blend, polyester,  
 cotton, plastic buttons  
 82 x 63 inches  
 Museum purchase with funds from  
 the Collection Endowment, 2016.6

**Erika Raneë**

American, b. 1965  
*Flip*, 2015  
 Mixed media on canvas  
 24 x 24 inches  
 Museum purchase with funds from  
 the Collection Endowment, 2016.7

**Pat McDonald**

American, 1965–2015  
*Tornado*, 2013  
 Painted steel  
 192 x 168 x 264 inches  
 Gift of the Friends of Modern Art,  
 2016.8

**Robert Arneson**

American, 1930–1992  
*Local Mind Disaster*, 1972  
 Ceramic  
 21 x 11 1/2 x 13 inches  
 Gift of Mary Mallery Davis, by  
 exchange, 2016.9

**Alessandro Gallo**

Italian, b. 1974  
*Old Skool (African Goose)*, 2013  
 Clay and acrylics  
 19 x 6 1/2 x 9 inches  
 Gift of Mary Mallery Davis, by  
 exchange, 2016.10

**Beverly Mayeri**

American, b. 1944  
*Torch Singer*, 1994  
 Clay with acrylics  
 26 x 18 x 14 inches  
 Gift of Mary Mallery Davis, by  
 exchange, 2016.11

**Sergei Isupov**

Russian, b. 1963  
*Shadow*, 1999  
 Glazed ceramic  
 19 x 11 x 10 1/2 inches  
 Gift of Mary Mallery Davis, by  
 exchange, 2016.12

**Joseph Seigenthaler**

American, b. 1959  
*Ivan Albright*, 1997  
 Acrylic, resin, stoneware  
 19 x 13 x 12 inches  
 Gift of Mary Mallery Davis, by  
 exchange, 2016.13

**John Woodward**

American, b. 1950  
*Garage*, 1995–96  
 Painted ceramic  
 28 x 19 x 20 inches  
 Gift of Mary Mallery Davis, by  
 exchange, 2016.14

**James Valerio**

American, b. 1938  
*Frances*, 1974  
 Oil on canvas  
 86 x 72 inches  
 Gift of Mary Mallery Davis, by  
 exchange, 2016.15

**Cesar Santander**

Spanish, b. 1947  
*Carnival*, n.d.  
 Oil on board  
 36 3/4 x 48 inches  
 Gift of Mary Mallery Davis, by  
 exchange, 2016.16

**Peri Schwartz**

American, b. 1951  
*Bottles & Jars III*, 2015  
 Aquatint with drypoint on paper  
 15 x 23 3/4 inches  
 Gift of the artist, 2016.17

**Bernard Perry**

American  
*Beijing Railway Station Platform*,  
 n.d.  
 Photograph  
 18 7/8 x 24 inches  
 Gift of the artist, 2016.18

**Garner Tullis**

American, b. 1939  
*Untitled*, n.d.  
 Ink on handmade and cast paper  
 32 x 27 x 6 inches  
 Gift of Dr. Harry and Margaret  
 Meisner, 2016.19

**Maya Lin**

American, b. 1959  
*Wire Landscape*, 2004  
 18 gauge dark annealed steel wire  
 63 1/2 x 52 1/2 x 11 1/4 inches  
 Gift of Janis and William Wetsman,  
 2016.20

# Loans

The Flint Institute of Arts believes an effective way to enhance its reputation as an important cultural institution is to lend works of art from its permanent collection to other museums. Lending art from the permanent collection promotes collegial relationships between museums, and provides national and international audiences exposure to works of art from the FIA's outstanding permanent collection. In addition, the FIA also borrows works from other museums, galleries, and collectors to supplement its permanent collection and exhibitions.

## Loans from the Permanent Collection

The following artworks were on loan from the FIA's permanent collection to the following exhibitions:



*John Singer Sargent's Portrait of the Arts: Artists, Writers, Actors, and Musicians*

6.29.15 – 10.4.15  
**Metropolitan Museum of Art**  
New York, New York

**John Singer Sargent**  
American, b. Italy, 1856–1925  
*Garden Study of the Vickers Children*, 1884 ◀  
Oil on canvas  
54 1/2 x 36 inches  
Gift of the Viola E. Bray Charitable Trust via Mr. and Mrs. William L. Richards, 1972.47

*Common Ground: African American Art from the Flint Institute of Arts, the Kalamazoo Institute of Arts, & the Muskegon Museum of Art*

8.15.15 – 11.15.15  
**Kalamazoo Institute of Arts**  
Kalamazoo, Michigan

12.10.15 – 3.16.16  
**Muskegon Museum of Art**  
Muskegon, Michigan

**Henry Wilmer Bannarn**  
American, 1910–1965  
*Ironing Day*, 1949  
Gouache on board  
20 x 16 inches  
Courtesy of the Isabel Foundation, Inlander Collection, L2003.36

**Edward Mitchell Bannister**  
American, 1828–1901  
*Untitled (Landscape with reflecting pond)*, ca. 1885  
Oil on canvas  
8 x 12 inches  
Museum purchase, 2008.367

**Mary Lee Bendolph**  
American, b. 1935  
*Hope*, 2010  
Aquatint on paper  
23 x 21 inches  
Commissioned for the 2010 FIA Print Society, 2010.304

**Willie Birch**  
American, b. 1942  
*Woman Reading Magazine*, 1999  
Acrylic and charcoal on paper  
59 x 60 inches  
Museum purchase, 2011.1

**Chakaia Booker**  
American, b. 1953  
*India Blue*, 2001  
Rubber tires and wood  
73 x 43 x 38 inches  
Bequest of Russell J. Cameron, by exchange, and partial gift from the Friends of Modern Art, 2002.11

**Willie Cole**  
American, b. 1955  
*Magna tji wara*, 2006  
Bicycle parts  
48 1/4 x 23 x 9 inches  
Museum purchase, 2007.5



**Karsten Creightney**

American, b. 1976  
**Crossroads**, 2010  
 Collage, watercolor, acrylic, oil and wax on wood panel  
 48 x 72 inches  
 Museum purchase, 2011.328

**Thornton Dial**

American, 1928–2016  
**Rolling Mill**, 1994  
 Mixed media on canvas on wood  
 65 x 65 x 12 inches  
 Museum purchase with funds from the Collection Endowment, funds donated by Mr. William S. White and partial funds donated by Mr. Durfee Day, 2013.15

**Melvin Edwards**

American, b. 1937  
**Ida's Voice**, 1992  
 Welded steel  
 10 1/2 x 11 x 11 inches  
 Museum purchase with assistance from the Richard Florsheim Art Fund, the Loeb Charitable Trust and Mark & Charlotte Lippincott, 1998.27

**Reginald K. Gee**

American, b. 1964  
**Hotel Room 46-U**, 2000  
 Oil crayon on brown paper bag  
 20 x 16 1/2 inches  
 Museum purchase, 2011.198

**William A. Harper**

American, b. Canada, 1873–1910  
**French Landscape**, ca. 1905–9  
 Oil on canvas  
 11 1/8 x 13 5/8 inches  
 Gift of the Founders Society, 2000.65

**Roman Johnson**

American, 1917–2006  
**Dad**, 1943  
 Oil on canvas  
 35 x 24 inches  
 Courtesy of the Isabel Foundation, Inlander Collection, L2003.76

**Jacob Lawrence**

American, 1917–2000  
**South African Gold Miners**, 1946  
 Gouache on paper  
 26 1/2 x 27 1/2 inches  
 Museum purchase with a grant from the Harvey J. Mallery Charitable Trust, 1991.23

**Clarence Lawson**

American, 1909–1988  
**Untitled (Landscape)**, 1939  
 Oil on canvas  
 15 1/2 x 20 inches  
 Courtesy of the Isabel Foundation, Inlander Collection, L2007.8

**Hughie Lee-Smith**

American, 1915–1999  
**Slum Lad**, ca. 1960  
 Oil on canvas  
 26 x 32 inches  
 Courtesy of the Isabel Foundation, Inlander Collection, L2003.80

**Charles McGee**

American, b. 1924  
**Murray**, 1966  
 Oil on board  
 19 1/2 x 15 1/8 inches  
 Gift of Michael and Natalie Pelavin, 1997.102

**Winfred Rembert**

American, b. 1945  
**Picking Cotton, Rows to the Left #2**, 2010  
 Dye on carved and tooled leather  
 33 x 31 inches  
 Museum purchase with funds donated by Mr. William S. White, 2013.1

**Vincent Smith**

American, 1929–2004  
**Couple**, ca. 1961–1965  
 Oil on wood  
 39 1/2 x 48 inches  
 Museum purchase, 2011.326

**Renée Stout**

American, b. 1958  
**Marie Laveau**, 2009/2013  
 Color pencil drawing over lithograph proof on paper  
 21 x 21 inches  
 Museum purchase with funds from the Collection Endowment, 2013.64

**Kara Walker**

American, b. 1969  
**Keys to the Coop**, 1997  
 Linocut on paper  
 46 x 60 inches  
 Museum purchase, 2005.19

**Charles White**

American, 1918–1979  
**Wanted Poster Series #17**, 1971  
 Oil and pencil on poster board  
 60 x 30 inches  
 Gift of Mr. and Mrs. B. Morris Pelavin, 1971.43

**Kehinde Wiley**

American, b. 1977  
**Saint Francis of Adelaide**, 2006  
 Cast marble dust and resin  
 12 x 10 x 5 1/2 inches  
 Museum purchase, 2007.129

**Walter Williams**

American, 1920–1998  
**Boy with Roots**, 1968  
 Oil on plywood  
 38 3/4 x 42 3/4 inches  
 Museum purchase, 1969.49

**Authentic Narratives: Ohio's Regionalists (1915–1950)**

9.12.15 – 1.17.16  
**Springfield Museum of Art**  
 Springfield, Ohio

**Charles E. Burchfield**

American, 1893–1967  
**Wire Fence in Snow**, 1936  
 Watercolor on paper  
 26 x 19 inches  
 Courtesy of the Isabel Foundation, Inlander Collection, L2003.55

**Emerson Burkhart**

American, 1905–1969  
**Backstreet Parade**, 1944  
 Oil on canvas  
 22 x 30 inches  
 Courtesy of the Isabel Foundation, Inlander Collection, L2003.56

**Clarence Holbrook Carter**

American, 1904–1999  
**Night Carnival**, 1941  
 Watercolor on paper  
 22 x 15 inches  
 Courtesy of the Isabel Foundation, Inlander Collection, L2003.61

**Clara Deike**

American, 1881–1964  
**Under the Trees**, 1935  
 Oil on canvas  
 20 x 24 inches  
 Courtesy of the Isabel Foundation, Inlander Collection, L2003.67

**Clara Deike**

American, 1881–1964  
**Westside Cleveland**, 1943  
 Oil on canvas  
 24 x 26 inches  
 Courtesy of the Isabel Foundation, Inlander Collection, L2003.68

**William Sommer**

American, 1867–1949  
**The Rabbit Hutch**, 1913  
 Oil on board  
 26 x 20 inches  
 Courtesy of the Isabel Foundation, Inlander Collection, L2003.112

Loans from the  
Permanent Collection

*Leon Kroll: The Terminal Yard &  
Artists of the Armory Show*

2.27.16 – 9.4.16  
**Mississippi Museum of Art**  
Jackson, Mississippi

**Leon Kroll**  
American, 1884–1974  
*Terminal Yards*, 1913  
Oil on canvas  
46 x 52 1/8 inches  
Gift of Mrs. Arthur Jerome Eddy,  
1931.4

*Mary Cassatt Retrospective*

6.25.16 – 9.11.16  
**Yokohama Museum of Art**  
Yokohama, Japan

**Mary Cassatt**  
American, 1844–1926  
*Lydia at a Tapestry Frame*, ca.  
1881  
Oil on canvas  
25 5/8 x 36 3/8 inches  
Gift of The Whiting Foundation,  
1967.32

*Painting the Modern Garden:  
Monet to Matisse*

1.30.16 – 4.20.16  
**Royal Academy of Arts**  
London, United Kingdom

**John Singer Sargent**  
American, b. Italy, 1856–1925  
*Garden Study of the Vickers  
Children*, 1884  
Oil on canvas  
54 1/2 x 36 inches  
Gift of the Viola E. Bray Charitable  
Trust via Mr. and Mrs. William L.  
Richards, 1972.47

# Deaccessions

Deaccessioning is the formal removal of a work from a museum's permanent art collection. Deaccessioning is an important part of collections management and a way for a museum to refine its collections. The FIA takes exceptional care when accepting works, however, under special circumstances it may be appropriate for a work to become a candidate for deaccessioning. If the work is of poor quality; if a better example is in the collection; if the object is an exact duplicate; if the authenticity is determined to be fraudulent; or if the work is no longer consistent with the mission or collecting goals of the museum, it may be considered appropriate for deaccessioning.

## Yoruba

Nigeria  
**Kola Nut Container**, 20th century  
Polychromed wood  
9 x 8 x 8 inches  
Gift of Justice and Mrs. G. Mennen Williams, 1973.48

## Bidyogo

Bissagos Island  
**Soul Figure (Ancestor Figure)**, 20th century  
Wood with traces of camwood powder and other pigments  
13 5/8 x 5 x 3 1/2 inches  
Gift of Justice and Mrs. G. Mennen Williams, 1973.2

## Bidyogo

Bissagos Island  
**Seated Male Ancestor Figure**, 19th century  
Wood  
16 3/4 x 6 1/4 inches  
Gift of Justice and Mrs. G. Mennen Williams, 1973.3

## Dogon

Republic of Mali  
**Bowl on Legs with Lid**, 20th century  
Wood  
15 x 8 3/4 x 8 3/4 inches  
Gift of Justice and Mrs. G. Mennen Williams, 1973.6

## Yoruba

Federal Republic of Nigeria  
**Ere Ibeji Figure (Twin Cult) - Female**, 20th century  
Wood, beads and metal  
10 1/2 x 3 x 3 inches  
Gift of Justice and Mrs. G. Mennen Williams, 1973.34

## Yoruba

Federal Republic of Nigeria  
**Ere Ibeji Figure (Twin Cult) - Male**, 20th century  
Wood, beads and metal  
10 1/2 x 3 x 3 inches  
Gift of Justice and Mrs. G. Mennen Williams, 1973.33

## Bamum People

Cameroon  
**Cap Mask**, 20th century  
Wood  
15 x 10 1/4 inches  
Gift of Justice and Mrs. G. Mennen Williams, 1973.7

## Senoufo

Côte d'Ivoire  
**Poropianong (Hornbill), Poro Society**, 20th century  
Wood  
34 x 16 1/4 inches  
Gift of Justice and Mrs. G. Mennen Williams, 1973.10

## Bobo

Burkina Faso  
**Cap Mask, Do Society**, 20th century  
Wood with black and white pigment  
8 1/2 x 18 3/4 inches  
Gift of Justice and Mrs. G. Mennen Williams, 1973.22

## Yoruba

Federal Republic of Nigeria  
**Orisha-Oko, Gelede Society**, 20th century  
Wood polychromed in European enamels  
17 x 11 1/2 inches  
Gift of Justice and Mrs. G. Mennen Williams, 1973.27

## Yoruba

Federal Republic of Nigeria  
**Cap Mask, Gelede Society**, 20th century  
Wood  
12 x 11 x 8 1/2 inches  
Gift of Justice and Mrs. G. Mennen Williams, 1973.29

## Yoruba

Federal Republic of Nigeria  
**Dance Wand, Osee Shango**, 20th century  
Wood  
45 x 6 1/2 inches  
Gift of Justice and Mrs. G. Mennen Williams, 1973.32

## Yoruba

Federal Republic of Nigeria  
**Ceremonial Spoon**, 20th century  
Wood  
14 x 5 1/2 x 2 1/4 inches  
Gift of Justice and Mrs. G. Mennen Williams, 1973.37

## Federal Republic of Nigeria

**Agbogho Mmuo Mask**, 20th century  
Wood with black and white pigment  
13 3/4 x 14 inches  
Gift of Justice and Mrs. G. Mennen Williams, 1973.38

## Nigeria

**Male Ancestor Figure**, 20th century  
Wood  
16 x 4 inches  
Gift of Justice and Mrs. G. Mennen Williams, 1973.41

## Republic of Guinea

**Horn Mask, Poro Society**, 20th century  
Wood and metal  
24 1/4 x 9 1/2 inches  
Gift of Justice and Mrs. G. Mennen Williams, 1973.42



## Republic of Sierra Leone

**Female Figure, Yassi Society**, 19th century ▲  
Wood  
20 3/4 x 7 7/8 inches  
Gift of Justice and Mrs. G. Mennen Williams, 1973.43

## Republic of Sierra Leone

**Nomoli Figure**, 20th century  
Soapstone  
6 1/2 x 2 7/8 x 2 7/8 inches  
Gift of Justice and Mrs. G. Mennen Williams, 1973.49

- Democratic Republic of Congo  
**Male Reliquary Figure**,  
20th century  
Wood  
16 1/2 x 3 1/2 x 3 1/2 inches  
Gift of Justice and Mrs. G. Mennen  
Williams, 1973.57
- Northern Nigeria  
**Standing Figure of a Man**,  
20th century  
Wood  
13 3/4 x 4 3/4 inches  
Gift of Justice and Mrs. G. Mennen  
Williams, 1973.62
- Senufo**  
Côte d'Ivoire  
**Korubla Helmet Mask, Poro  
Society**, 20th century  
Wood with metal eyes, feathers  
and raffia collar  
21 x 12 1/2 inches  
Gift of Justice and Mrs. G. Mennen  
Williams, 1973.8
- Ghana  
**Funerary Figure**, 20th century  
Terra cotta  
7 1/4 x 2 3/4 x 3 inches  
Gift of Justice and Mrs. G. Mennen  
Williams, 1973.52
- Mali  
**Cap Mask with Antelope**,  
20th century  
Wood  
14 1/4 x 27 inches  
Gift of Justice and Mrs. G. Mennen  
Williams, 1973.63
- Nigeria  
**Ancestor Figure**, 20th century  
Wood  
14 3/4 x 2 3/4 x 2 3/4 inches  
Gift of Justice and Mrs. G. Mennen  
Williams, 1973.39
- Nigeria  
**Ancestor Figure**, 20th century  
Wood  
14 1/4 x 3 1/4 x 3 1/4 inches  
Gift of Justice and Mrs. G. Mennen  
Williams, 1973.40
- Bobo**  
Burkina Faso  
**Cap Mask with Bird's Beak, Do  
Society**, 20th century  
Polychromed wood  
34 x 8 1/2 inches  
Gift of Justice and Mrs. G. Mennen  
Williams, 1973.18
- Côte d'Ivoire  
**Face Mask with Horns**,  
20th century  
Wood plastered with mud and  
inlaid with Cowry shells  
17 x 8 inches  
Gift of Justice and Mrs. G. Mennen  
Williams, 1973.45
- Ghana  
**Funerary Head**, 20th century  
Terra cotta  
13 1/4 x 10 1/8 inches  
Gift of Justice and Mrs. G. Mennen  
Williams, 1973.54
- Senufo**  
Côte d'Ivoire  
**Helmet Mask**, 20th century  
Wood  
20 x 10 3/4 inches  
Gift of Justice and Mrs. G. Mennen  
Williams, 1973.12
- Bobo**  
Burkina Faso  
**Face Mask with Superstructure,  
Do Society**, 20th century  
Polychromed wood  
41 x 9 3/4 inches  
Gift of Justice and Mrs. G. Mennen  
Williams, 1973.20
- Bobo**  
Burkina Faso  
**Face Mask, known as Laa**,  
20th century  
Polychromed wood  
20 3/4 x 6 inches  
Gift of Justice and Mrs. G. Mennen  
Williams, 1973.23
- Bobo**  
Burkina Faso  
**Helmet Mask with Beak and  
Horns**, 20th century  
Polychromed wood  
35 1/4 x 8 inches  
Gift of Justice and Mrs. G. Mennen  
Williams, 1973.24
- Bobo**  
Burkina Faso  
**Face Mask with Human Figure**,  
20th century  
Polychromed wood  
37 x 6 3/4 inches  
Gift of Justice and Mrs. G. Mennen  
Williams, 1973.25
- Bobo**  
Burkina Faso  
**Mask with Human Figure on Top**,  
20th century  
Polychromed wood  
48 x 5 3/4 inches  
Gift of Justice and Mrs. G. Mennen  
Williams, 1973.26
- Yoruba**  
Federal Republic of Nigeria  
**Kneeling Woman Carrying a  
Bowl**, 20th century  
Polychromed wood and beads  
30 x 15 1/2 inches  
Gift of Justice and Mrs. G. Mennen  
Williams, 1973.31
- Nigeria  
**Helmet Mask with Horns**, 20th  
century  
Polychromed wood  
22 1/2 x 15 inches  
Gift of Justice and Mrs. G. Mennen  
Williams, 1973.44
- Kra**  
The Republic of Liberia  
**Clay Head**, 20th century  
Clay with feathers, metal and  
cowry shells  
8 1/4 x 6 x 6 inches  
Gift of Justice and Mrs. G. Mennen  
Williams, 1973.50
- Bateke**  
Republic of Congo  
**Figure of a Man**, 20th century  
Wood  
12 3/8 x 2 1/2 x 2 1/2 inches  
Gift of Justice and Mrs. G. Mennen  
Williams, 1973.58
- Ashanti People**  
Republic of Ghana  
**Ceremonial Chair**, 20th century  
Wood, leather and metal  
27 x 20 1/2 inches  
Gift of Justice and Mrs. G. Mennen  
Williams, 1973.60
- Republic of Guinea  
**Nimba Figure**, 20th century  
Wood  
57 x 25 1/2 inches  
Gift of Justice and Mrs. G. Mennen  
Williams, 1973.61
- Kissi People**  
Republic of Guinea  
**Stone Figure with Three Heads**,  
20th century  
Soapstone  
8 1/2 x 4 1/4 x 4 inches  
Gift of Justice and Mrs. G. Mennen  
Williams, 1973.65
- African  
**Container**, ca. 1890  
Leather and wood  
22 5/8 x 10 3/4 x 10 3/4 inches  
Gift of Mr. Harold Frank, 1982.442



# Art School

The FIA Art School is dedicated to the enrichment of the community through individual academic exposure to the visual arts. Highly qualified faculty offer instruction in drawing, painting, photography, digital arts, animation, illustration, fibers, ceramics, sculpture, puppetry, portfolio development for teens, and early childhood art courses. Since 1928, the Art School has operated continuously, helping students develop a wide range of artistic goals and skill levels. Programs are designed to support the mission of the FIA with dynamic curricula that engages students and the community through creative processes, studio experiences, and gallery exhibitions.



## Programming

The Art School hosted six opening receptions in the Bishop Gallery in 2015–16 fiscal year totaling 512 attendees. Three exhibitions featured the work of Art School students, including artwork from the Pre-College Portfolio Development Program and studio classes; two exhibitions highlighted faculty work and one exhibition featured original Lego sculptures created by the Michigan Lego Users Group and the Michigan Therapeutic Lego Users Group. The Art School continues to expand course offerings and opportunities for students. New courses include puppetry, book arts, and video. The Art School brought three visiting artists from outside of Michigan to the FIA for presentations, artist talks, collaborations, and workshops. Visiting artists help enrich and broaden our artistic practices by bringing our community fresh perspectives and approaches to creating art. The Art School continued hosting free family activities as a means of engaging the community in free art-based projects. A total of 2,716 adults and children attended these events, which included MLK Day Celebration, the Cultural Center's Applewood Four Days of Family Fun, and Holiday Walk, along with several in-house events held within the FIA. Youth members were invited to three special activities led by early childhood specialist Rebecca Andrus. 37 members between the ages of 5 and 12 created African masks, Origami mobiles, and wooden animal sculptures inspired by Mexican woodcarver, Zeny Fuentes. The FIA collaborative program, Healing Through Art Therapy with McLaren Flint continued generating 66 encounters during the 2015–16 fiscal year with art therapist Gail Singer. The Food Bank of Eastern Michigan collaborated with the Art School to

produce more than 1,700 bowls for the Food Bank's annual Empty Bowls Project. 20 new students were accepted into the Pre-College Portfolio Development Program and began the three-year program with Drawing I in February. This represents a 66% increase over 2014. The 5th annual LEGO Competition was held on March 19, 2016. 108 children in grades K-12 submitted original creations for the competition. Judges awarded more than \$2,000 in LEGO kits and gift certificates to 25 winners. 1,406 people attended the event, which included hands-on building activities in the Art School studios, an exhibition of Lego sculptures in the Bishop Gallery, and a screening of the *LEGO Movie* in the FIA Theater. The 2016 Lego Event was made possible by support from Dr. David Taylor, Dr. Shawn Reiser, Flint Area School Employees Credit Union, and Barnes and Noble.

## Enrollment

Summer 2015, 414 students  
 Fall 2015, 469 students  
 Winter/Spring 2016, 500 students

## Scholarships

The Art School granted \$14,567 in scholarships for the 2015–16 fiscal year to 110 students (64 youth scholarships and 46 adult scholarships).

# Education

The Flint Institute of Arts is committed to promoting understanding and enjoyment of the visual arts through high-quality art education programs. We believe art is a vital component of life and that learning is a lifelong process. Our educational programming provides dynamic and enriching experiences for people of all ages with all levels of familiarity with art.

We invite people to gain greater understanding and enjoyment of the FIA's outstanding permanent collection and special exhibitions. Our programs are designed to present learning opportunities that are rich in content and stimulate imagination, thought and creativity.

Education programs served a total of 46,979 during the 2015–16 fiscal year.

## K-12 Programs

PreK-12 programs served 30,577. Twenty-six percent participated in gallery lessons, 27% in studio activities, 46.5% in outreach programs, and 0.5% in self-guided visits/other. Sixty-four percent of students attended public schools, 14% private schools, and 22% homeschool/charter schools, with 88% of the schools located in Genesee County. The remaining 12% of schools served were from Ingham (0.4%), Lapeer (0.2%), Midland (0.1%), Oakland (2%), Saginaw (0.6%), Shiawassee (0.3%), St. Clair (0.2%), St. Joseph (0.2), while 8% of participants included groups with students from a mixture of counties.



## Public Programs

Participation in adult programs increased 37%, college participation decreased 3% due to low enrollment, and family participation increased 8%, contributing to an increase of 10% over the 2015–16 fiscal year.

## Docents

Docents are integral to the Education department. Thirteen volunteers were involved in the docent program in 2015–16 fiscal year. They participated in intensive training sessions from September 2015 through May 2016. Docents assisted with 650 gallery and studio programs, and served 9,898 people, resulting in 1,750 hours of service and an increase of 8% over this fiscal year. In addition, eight people participated in new docent training.

### **Active Docents**

Oya Agabigum  
Lavonne Bomeli  
Tom Butts  
Susan Damone  
Kathy George  
Kim Giacchina  
Alfreda Harris  
Lynne Hurand  
Christine Jones  
Belle McPhee  
Jeanette Nassif  
Kate Nichels  
Kathy Weiner

### **Docents in Training**

Irma Andrade  
Patty Duffy  
Harold Ford  
Dena Hillman  
Marilyn Hurwitz  
Ann Rasmussen  
Derald Schnepf  
Joyce Wilson

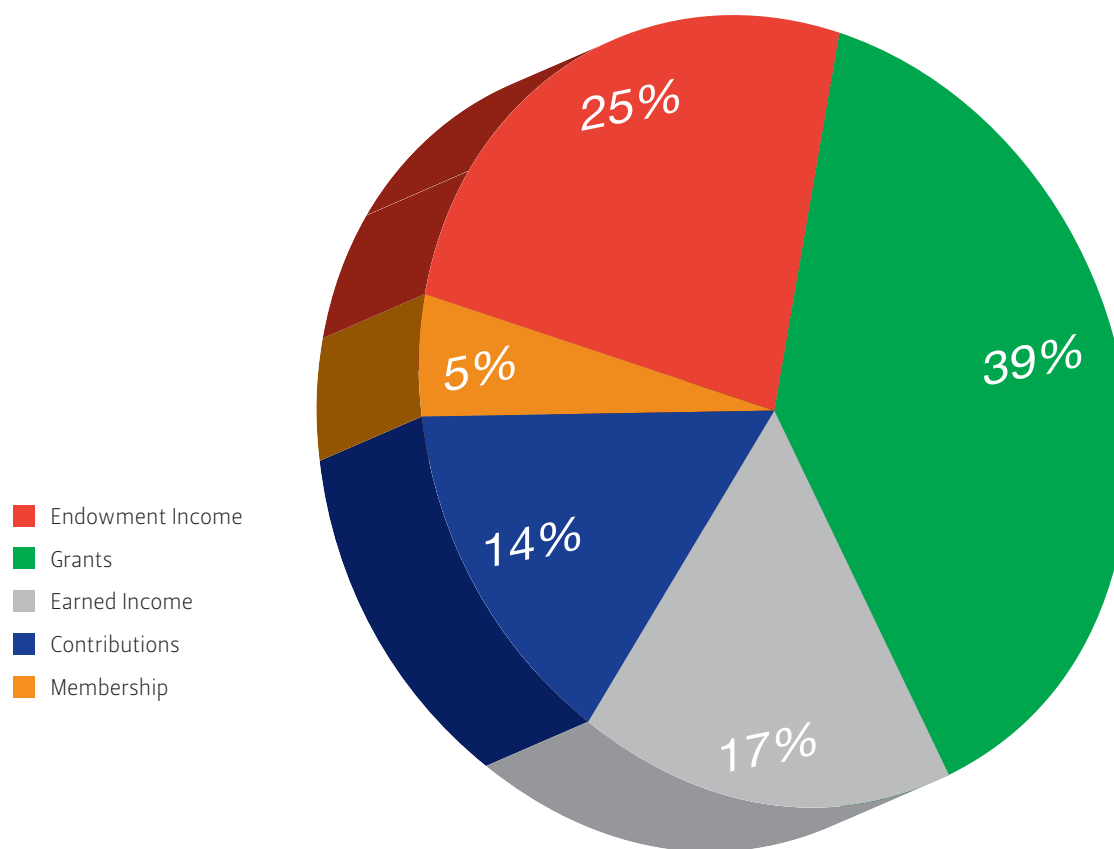
# Development

The Development Department is responsible for all areas of funding for the FIA. This includes support through endowments, grants, earned income, contributions, and membership.

In addition, the department manages audience development, collaborative initiatives, facilities use, marketing, special events, social media and the website. The department also organizes a broad and diverse volunteer base.

## Income

The FIA has five primary sources of support: endowment income, grants, earned income, contributions, and membership.





## Endowment Income

Both restricted and unrestricted, endowment funds support general operations, exhibitions, programs, art acquisition, art conservation, scholarships, lectures, and membership initiatives. As of June 30, 2015, the endowment funds totaled \$36,201,616, contributing 25% of the annual income. Unrestricted donations in the form of planned gifts and bequests are traditionally allocated to endowment.

## Grants

The FIA receives grant awards from foundations, community organizations, businesses, corporations and state and federal governments. Revenue from grants represents 39% of the FIA's annual income. The FIA receives support from two auxiliary groups, the Founders Society and Friends of Modern Art.

## Earned Income

Income generated from sales, tuition, facility rentals, special events, and admissions provided 17% of the FIA's operating income.

## Contributions

Sponsorships, annual appeal gifts, memorials, donations commemorating anniversaries and birthdays, and funding of specific programs or events represents 14% of the FIA's annual income.

## Membership

Membership dues represent 5% of the FIA's annual income. Membership levels begin at \$20 annually for Youth (ages 2.5–12) or students (ages 13+) and progress to \$1,000+ annually for Rubens Society membership. Basic benefits are enjoyed by all, and higher level donors receive extended benefits (such as reciprocal membership privileges to over 850 museums nationwide) at the Sustainer level (\$100) and above. The Rubens Society generates more than \$100,000 to the budget and Society members are invited to three exclusive events throughout the year. FIA Art School members receive a discount on art classes. Of new members who joined the FIA, 29.5% joined through the Art School.

The Flint Print Club was established in 2007. The club is limited to 100 members who, after first

becoming a member of the FIA at the Family level (\$50) or above, receive a commissioned print by a critically acclaimed artist. The club is dedicated to connoisseurship, the pursuit of personal collecting, and the purchase of prints to augment the FIA's collection.

The FIA College Town initiative provides free memberships to students nationwide. Students receive many of the basic membership benefits and receive invitations and other announcements via email.

Please see pages 35–45 for this fiscal year's membership listing.

Donors to and members of the FIA provide the foundation for all of the Institute's activities.



Members preview for the exhibition *From Heart to Hand: African American Quilts from the Montgomery Museum of Fine Arts*

# Special Events & Facility Rentals

The Flint Institute of Arts offers an active schedule of events for members and the general public throughout the year, including Holiday Walk, the Founders Society's First Frost Arts & Fine Crafts Fair, and the Friend's of Modern Art's Annual Art Fair. Annual fundraisers at the FIA are diverse and appealing to all demographics. Each event has a committee of devoted and hard-working volunteers that are active in all areas of planning. From Beer Tasting and Wine Tasting to the Community Gala and The PARTY, the FIA continues to create a diverse palette of events to raise funds for the museum and engage the ever-growing community.

## 8th Annual Art on Tap Beer Tasting

9.19.15

Attendance: 585

**Event Sponsors:** Applebee's Grill & Bar; Al Serra Auto Plaza; American Electric; Applegate Chevrolet; Arby's; BB & E Consultants; Walter & Linda Barkey, MD; Blessing Company; James & Kathryn Boles; Brown & Brown of Michigan, Inc.; The Kristy Canteberry Real Estate Team; Chasse Ballroom; Cislo Title Company; Cline, Cline, & Griffin; Consumers Energy; Community Podiatry Group - Drs. Reiser & Taylor; Dewey Auto Care, Inc.; Diplomat Pharmacy; Don Franco Salons; Pete & Sally Doneth; Durfee Day; Harry & Kathy Eiferle; ELGA Credit Union; Michael B. Evanoff; Fabiano Brothers Inc.; Fifth Third Bank; John & Janie Fleckenstein; Flint Welding Supply Co.; Kay O'Malia & Don Fochtman; Henry Fracalossi; The Genesee Group; Gil-Roy's; Glenwood Cemetery Association; The HAMO Group; Hodges Supply Company; J.P. O'Sullivan Distributing, Inc.; Kelly-Younger Interiors; Kettering University; Ketzler's Florist; Landaal Packaging Systems; Lang Constructors, Inc.; Little Joes; Michigan Carts; Mark Mikolajczak; Drs. Bobby & Nita Mukkamala; Olmsted Associates, Inc.; Oppenheimer & Co., Inc.; OutFront Media; Paw Palace; Peabody Insurance Agency; Susie & Randy Piper; Swartz Creek Veterinary Hospital; Raymond James Financial Inc.; Peter Serra - Serra Benefits Group; Ann & Khalil Saab; Sharp Funeral Home; Spartan Printing; Special Occasions; Ken & Linda Steibel; The Torch Bar & Grill; WCMU Public Broadcasting; Wheeler Party Rental; Whigville Market; Doug & Dawn Wyrwicki; Yeo & Yeo CPAs & Business Consultants.

**Beer Sponsors:** Alaskan Brewing; Arcadia Brewing Co.; Atwater Brewery; Bell's Brewing Co.; Blakes' Ciders; Blue Moon Brewing; Brooklyn Brewery; Cider Boys; Deschutes Brewing; Fabiano Brothers, Inc.; Fenton Winery & Brewery; Founder's Brewing Co.; Goose Island, Griffin Claw Brewing Co.; John P. O'Sullivan Distributing, Inc.; Jolly Pumpkin Artisanal Ales; Latitude 42 Brewing Co.; Lynchpin Beer Company; Motor City Brewing Works; Mountain Town Brewing Co.; New Belgium Brewing; Oskar Blues Brewery; Redwood Brewing; Right Brain Brewery; Rochester Mills Brewery; Saugatuck Brewing Co.; Sierra Nevada; Tenacity Brewing; Tri-City Brewing Co.; Uncle John's Hard Cider; Whigville Market/Short's Brewing Co.

## 25th Annual Thompson Lecture

10.20.15

Attendance: 266

**Sponsor:** Dr. & Mrs. Jack W. Thompson Lecture Fund

## 10th Annual First Frost Arts & Fine Crafts Fair

11.7.15 – 11.8.15

Attendance: 2,420

**Sponsors:** Mary Coleman; Chris & Jean Dundas; McLaren Flint; Jim & Perry Ann Owen; Dr. Matthew Turchi; Zito Construction

## Sheppy Dog Fund Lecture

11.4.15 & 4.27.16

Attendance: 99 & 175 *respectively*

**Sponsor:** Dr. Alan Klein

## Holiday Walk

12.1.15

Attendance: 3,700

**Sponsor:** The Children's Office, Dr. Kienan Murphy

## 9th Annual Community Gala

1.23.16

Attendance: 293

**Sponsors:** Mr. & Mrs. Henry Allen; Baker Center for Graduate Studies; Clara Blakely and Erica Leverette; James & Kathy Boles; Mrs. Eleanor Brownell; Christine Cook; Samuel Cox; Cracker Barrel Old Country Stores; Davenport University; Delta Sigma Theta Sorority - Flint Alumnae Chapter; Diplomat Pharmacy; Dort Federal Credit Union; FM Financial Credit Union; Dr. & John & Catherine Frederick; FUNchitecture, LLC; Greater Flint Chapter of the Pierians, Inc; Hamilton Health Network; Dr. Mona Hardas, PC; Louis Hawkins; HealthPlus of Michigan; HI-Tech Protection, Tim

& Belinda Johnson; Lynne Hurand; Gary & Carol Hurand; Jack and Jill of America, Flint Chapter; Kettering University; Lawrence E. Moon Funeral Home; Tom & Kay Lillie; Kris & Handy Lindsey; DeAndra R. McCain; Georgia McCall; Dr. Ramotsumi & Velynda Mekhene; Thomas J. Mitchell; Kathy Moeller; Mott Children's Health Center; Mott Community College; Mr. Milton & Dr. Brenda Rogers-Grays; Dr. & Mrs. Kienan F. Murphy; OutFront Media; PNC Financial Services Group; Michael & Virginia Rucks; Ann & Khalil Saab; Chuck & Kathryn Sharbaugh; Jim & Pat Spangler; TeamOne; Theresa A. Stephens-Lock; The Chosen Few Corporation; The Rutherford Group; The Williams Firm, PC; Totem Books & Café; UAW Region 13; WCMU Public Broadcasting; Jay & Janis Werschky

### Art School LEGO®

3.19.16

Attendance: 1,200

Sponsors: Barnes & Noble; Flint Area School Employees Credit Union; Dr. Shawn Reiser & Dr. David Taylor.

### 17th Annual Wine Tasting

4.16.16

Attendance: 193

Event Sponsors: Ameriprise, Dawn-Hausch-Cooper; Behm & Behm; Bennett Telephone Answering Service; CMU; Michael E. Dach; Diplomat Pharmacy; Flint Cultural Center; William Hentgen; Dr. & Mrs. John S. Isaac; Linda J. LeMieux; Lewis & Knopf, PC; McCredie Insurance; Thomas J. Mitchell; MLive Media Group; Attorney Matthew L. Norwood; Olmstead Associates; OutFront Media; Special Occasions; The Green Group at Morgan Stanley; Vic Bond Sales; WCMU Public Broadcasting; Werschky & Lewis Family Dentistry

Wineries & Distributors: Cana Distributors; Great Lakes Wine & Spirits; Henry A. Fox; Republic National; O'Neill Vintners; Soif De; Vintage Wines; Woodberry Wine

Food Donations: 501 Bar & Grille; Bella Birches; Brickstreet of Grand Blanc; Cork on Saginaw; Hot Cups, LLC; Redwood Steakhouse; Semi-Sweets; The Copperwood Grille; The Palette Cafe

### The PARTY

6.4.16

Attendance: 398

Sponsors: Al Serra Auto Plaza; All Weather Seal; American Machining, Inc.; Christopher Ash, DO & Shannon Ash; Associated Radiologists of Flint, PC; ATI Group; Band Ayd Systems; Nicole Barrett, Rodan + Friends; Bodman, PLC; Eleanor Brownell; Case Island Glass - Suellen Parker; Cline, Cline & Griffin; Community Podiatry Group - Drs. Reiser & Taylor; Culligan; DBaker Designs; Mrs. Bobby & Nita Mukkamala; Epiphany Studios; Mr. & Mrs. Troy Farah; Zouheir Fares, DO Facos; Flint & Genesee Chamber of Commerce; Joanne & Bob Fuller; FUNchitecture, LLC; Genesee Urgent Care, Dr. Ayman Haidar; Gerych's; Great Lakes Family Dental Group; Bobby J. Grossi, DDS, Gateway Dental; Adam Haffajee - Broker, Piper Realty; Hank Graff Chevrolet Davison; William Hentgen; Michael Kia, DO; Jennifer Lasco Real Estate; Drs. Prasad & Jayashree Kommareddi; Lake & Land Custom Homes, LLC; Landaal Packaging Systems; John & Nicole MacDonald; Matthew L. Norwood, Attorney at Law; Olmsted Associates; OutFront Media; Pure Bliss Salon & Spa; Rama Rao, MD; Redwood Steakhouse; ROWE Professional Services; Ann & Khalil Saab; Shaltz Automation; Philip & T. Ardele Shaltz; Siwek Construction Company; Skaff Furniture Carpet One; Sorensen Gross Company; Spartan Printing; Stephens Wealth Management Group; Superior Building Services; The Children's Office - Dr. Kienan F. Murphy; The Hurand Family; The John Wentworth Group; The Torch Bar & Grill; Tom & DeAnn Townsend; Tremaine Real Living Real Estate; Zip Mailing/The Print Shop.

### 49th Annual Flint Art Fair

6.18.16-6.19.16

Attendance: 4,275

### Facilities Rentals

7.1.15 - 6.30.16

Attendance: 8,873

Rentals: 74



The PARTY: An Artrageous Affair

# Auxiliary Groups

Each year, support groups donate thousands of dollars and volunteer hours to the Institute in support of exhibitions, art acquisitions, and programs. The Flint Institute of Arts is deeply grateful to the members of the Friends of Modern Art and the Founders Society for their generous support.

## Friends of Modern Art

### Letter from the President, Lynne Taft-Draper

Fiscal year 2015–16 was a productive year for the Friends of Modern Art. Direct support for FIA museum activities included sponsorship of the exhibition *Function, Form, and Fantasy: Ceramics from the Dr. Robert and Deanna Harris Burger Collection*, (Summer, 2016), and the purchase of the large-scale, painted steel sculpture *Tornado* by Pat McDonald, installed on the front lawn of the FIA.

FOMA's film program enjoyed another strong season running from the weekend after Labor Day to mid-June on the weekend of the Flint Art Fair. Total attendance was 8,078, an average of 207 patrons per week. The highest total attendance figures came at the beginning and the end of the season, both for comedies starring Maggie Smith. The top figure of 451 patrons was for *My Old Lady*, which opened the FOMA season in September. Ranking second was the figure of 444 viewers for *The Lady in the Van*, which capped the schedule in June. Other top FOMA series attractions were two comedies, *Grandma* (370) and *I'll See You in My Dreams* (346), plus *Infinitely Polar Bear* (308), *The 100-Year-Old Man Who Climbed Out the Window and Disappeared* (307), and *Man Up* (295).

In June, the Friends of Modern Art presented the 49th annual Flint Art Fair on the grounds of the Flint Institute of Arts. The Art Fair is an iconic event, signifying the beginning of the summer cultural season in Flint. Each year the Fair attracts nearly 200 artists and thousands of local residents and out-of-town visitors.

### Officers

Lynne Taft-Draper, *President*  
Michael Rucks, *Vice President*  
Jamile Lawand, *Secretary*  
Janice Harden, *Treasurer*

### Board of Trustees

Ginny Rucks  
Steve Bernstein  
Kim Kolhoff



*Function, Form, and Fantasy:  
Ceramics from the Dr. Robert and  
Deanna Harris Burger Collection  
exhibition.*

## Founders Society

### Letter from the President, Lynne Hurand

The Founders Society pledged \$27,000 in support of the Flint Institute of Arts in fiscal year 2015–2016. These pledges were to support the FIA as follows: \$2,000 to the Keith LeFleur Library, \$10,000 as an exhibition sponsor of *Art of Collecting*, and \$15,000 as the Graphics Gallery Sponsor. A check for \$27,000 was presented to the FIA on June 16, 2016 at our business meeting.

The net revenue from the annual First Frost Arts & Fine Crafts Fair in November 2015 was \$22,610, a marked improvement over the previous year of \$6,208. We attribute this to the fair returning to its traditional date, the first weekend in November, as well as our controlling expenses, and learning to make better use of social media. Other fundraising results are \$1,850 from the Bennett Jazz Concert and \$1,570 from DuMouchelles Antique Appraisal.

This year, Founders offered day trips to Grand Rapids Art Prize, Detroit Institute of Arts' *Diego Rivera and Frida Kahlo in Detroit* and the Marshall M. Fredericks Sculpture Museum in Saginaw. International travel included A Taste of the South Pacific (Australia), Imperial Cities (Prague, Vienna, and Budapest), Montreal, Quebec City and Ottawa, and Caves and Culture Trip to France. Year-to-date revenue is \$1,761.

The Art Sales & Rental Gallery has generated \$3,000. These are the proceeds from the sales or rental of juried works of art by both local and regional artists who receive a portion of the rental or sale income. Harriet Lay, the one paid employee for this program, retired after 24 years of service. Her position has been filled by contract employee Carol Turley, who works approximately 20 hours a week. All other staffing of the gallery on a daily basis is provided by Art Sales & Rental volunteers.

Founders membership stands at 284 generating \$2,840. The FIA collects these monies for Founders as part of the regular membership renewal process.

In December, the Founders Society hosted our traditional holiday luncheon for all FIA staff members in Isabel Hall. This is our way of thanking the FIA staff for their generous assistance in helping us to fulfill our mission of supporting FIA programs.

Income received from this year's activities enabled the Founders Society to fund our FIA pledge and left us with a current balance of \$114,323.46. A final EOY adjustment will be made upon receiving our dues income for this fiscal year. In addition to the fundraising activities, Founders Society members have collectively donated thousands of hours of service to benefit the FIA.

*First Frost Arts & Fine Crafts Fair.*



### Officers

Lynne Hurand, *President*  
Sheila Smith, *Co-Vice President*  
Bob Turley, *Co-Vice President*  
Maggie Hart, *Recording Secretary*  
Tammy Schultz, *Corresponding Secretary*  
Sam Burdick, *Treasurer*  
James D. Draper, *Immediate Past President*

### Board of Trustees

Jeneil Applegate  
Betty Brown  
Patricia Burdick  
Sam Burdick  
Ann Chan  
Mary Coleman  
Chris Dundas  
Jean Liming Dundas  
Shirley Epps  
Billie Fisher  
Rick Fortner  
Vickie Frappier  
Maggie Hart  
Bill Hentgen  
Hulya Hiziroglu  
Lynne Hurand  
Judith Irwin  
Perry Ann Owen  
Saroja Reddy  
Paul Rozycki  
Tammy Schultz  
Sheila Smith  
Ernelle Taylor  
Bob Turley  
Carol Turley  
Barbara White  
Trish Zito-Smith



# Contributions

## Annual Appeal

Ms. Valarie F. Allen  
 Anonymus  
 Anonymus, In honor of Mr. & Mrs.  
 Gary Hurand & Mrs. Denise  
 Morgan  
 Mr. Steven S. Bailie  
 Mr. & Mrs. Richard P. Baks  
 Dr. & Mrs. William D. Beck &  
 Kristen  
 Mrs. Doris Beebe  
 Mr. & Mrs. Stephen Bernstein  
 Ms. Jane M. Bingham  
 Mr. & Mrs. James Boles  
 Ms. Susan Steiner Bolhouse &  
 Mrs. William Ballenger  
 Mr. & Mrs. Bob Booher  
 Mrs. Patricia Boyd  
 Mrs. Carole A. Brender  
 Mrs. Monica J. Brown  
 Mrs. Edmund Brownell  
 Ms. Jennifer Burnett & Mr. Sean  
 Siebigteroth  
 Mr. & Mrs. Tom E. Butts  
 Mrs. Kay Cherry  
 Ms. Melba R. Clapp  
 Ms. Mary Coleman  
 Mr. & Mrs. George Cross  
 Mrs. Nancy J. Cunningham  
 Ms. Gail M. Curry  
 Mr. Robert L. Daly  
 Mrs. Rosemary R. DeCamp  
 Mrs. Elaine DeCou  
 James & Tracy DelDuca  
 Ms. Jeanne Dobs  
 Mr. Dallas Dort & Mrs. Sharon A.  
 Peterson Dort  
 Mr. Robert Dueueke  
 Mr. & Mrs. Robert F. Dueueke  
 Ms. Sarah Dunne & Mr. Patrick  
 Mullane  
 Ms. Darba L. Dye  
 Mr. Ryan M. Eashoo  
 Mr. & Mrs. Richard H. Ebbott

Mr. John Ellenwood  
 Mr. & Mrs. Daniel Fiedor  
 Mrs. Barbara K. Gamache  
 Dr. & Mrs. Scott A. Garner  
 Ms. Patricia Gebhardt  
 Mr. Thomas M. Gervasi  
 Mr. & Mrs. Jonathan Glab  
 Mrs. Donna A. Graham  
 Dennis & June Haley  
 Ingrid G. Halling & Robert Thomas  
 Ms. Janice T. Harden  
 Mrs. James Hastings  
 Mr. John Hemingway &  
 Mrs. Connie Palmer  
 Ms. Annetta Hendrickson  
 Mr. & Mrs. John B. Henry  
 Mrs. Ernie Hermann  
 Mr. & Mrs. Francis Hudson  
 Ms. Lynne Hurand  
 Mrs. Gail D. Hutchison  
 Ms. Jane M. Johnson  
 Ms. Judy Johnson  
 Mr. James R. Kettler  
 Mrs. Nancy Kirby  
 Mr. & Mrs. Norman Kleiner  
 Mr. & Mrs. Frederick L. Kump  
 Mr. & Mrs. Stephen S. Landaal  
 Mrs. Sue Lauber  
 Mr. & Mrs. James Lay  
 Mrs. Ruth Leder  
 Mrs. Linda LeMieux  
 Mr. Max Lepier & Mr. Rex L. Dotson  
 Mr. & Mrs. Thomas B. Lillie  
 Mr. & Mrs. Glenn Lysinger  
 Mr. & Mrs. Laurence E. MacDonald  
 Ms. Doris Malfese  
 Ms. Marjorie Markon  
 Mr. & Mrs. Charles Marshall  
 Dr. & Mrs. Berton J. Mathias  
 Mr. Michael Mathieu & Ms. Barbara  
 Swartz  
 Mr. Norman E. McCarthy  
 The McCredie Family  
 Mr. & Mrs. Ted Meadors  
 Mr. & Mrs. Ed Meier

Ms. Barbara Mirsky  
 Mr. Thomas J. Mitchell  
 Mrs. Sally J. Moss  
 Miss Kathleen E. Muench  
 Ms. Diane Murphy  
 Dr. & Mrs. Kienan F. Murphy  
 Mr. & Mrs. Alexander C. Murray  
 Ms. Sharon Y. Naughton  
 Ms. Carole A. Pappas  
 Mr. H. Michael Parker  
 Ms. Jacqueline Piechowski  
 Mrs. Karan A. Pinkston  
 Mr. Brian Polisky & Ms. Leslie Trout  
 Mrs. Fouad Rabiah  
 Mr. John L. Riegle, Jr.  
 Mr. & Mrs. Michael J. Riha  
 Mr. & Mrs. George Rosenberger  
 Mr. & Mrs. Paul Rozycki  
 Drs. Michael & Virginia Rucks  
 Mrs. Ellajane S. Rundles  
 Mr. & Mrs. Khalil M. Saab  
 Mr. & Mrs. David Sabino  
 Ms. Grayce Scholt  
 Dr. & Mrs. Paul E. Schroeder  
 Mr. & Mrs. Howard S. Schultz  
 Mr. & Mrs. Howard S. Shand  
 Chuck & Kathryn Sharbaugh  
 Skaff Carpet & Furniture Co.  
 Mr. & Mrs. Eric Smith  
 Dr. Ernestine R. Smith  
 Ms. Susan Sowa  
 Mr. & Mrs. James Spangler  
 Ms. Shelley R. Spivack & Mr. Justin  
 Scanlon  
 Miss Barbara Stewart  
 Mr. Paul Stirling  
 Ms. Suzanne Sugden  
 Dr. & Mrs. Thomas Svitkovich  
 Dr. Michael Szappan & Mr. James  
 Maxwell  
 Ms. Ernelle Taylor  
 Ms. Christine Thomas  
 Ms. Diane Thompson  
 Mrs. Ruth P. Thrash  
 Mr. & Mrs. Roger Timm

Mr. & Mrs. James Truesdell, Jr.  
 Dr. & Mrs. Allen F. Turcke  
 Ms. Donna L. Ullrich  
 Dr. & Mrs. Frederick VanDuyne  
 Dr. & Mrs. Jay A. Werschky  
 Mr. & Mrs. Ridgway H. White  
 Dr. & Mrs. James Williams  
 Dr. Sue Wisenberg & Ms. Donna  
 Baker  
 Mr. & Mrs. Dean Yeotis  
 Judge & Mrs. Thomas C. Yeotis  
 Mrs. Barbara A. Young

## Gift by Dr. David Taylor, Dr. Shawn Reiser, & Dr. Dean Singer of the Community Podiatry Group, P.C. in honor of:

Global Physical Therapy  
 Wafa Abbud, M.D.  
 Ahmad Abdel-Halim, M.D.  
 Hindi Ahmed, M.D.  
 Indira Alluru, M.D.  
 Duane Allyn, D.O.  
 Larry Alton, D.O.  
 Evelyn Alunit, M.D.  
 Jonathan Abrogast, M.D.  
 Rommel Aquino, M.D.  
 Pauline Aquino, M.D.  
 Ghassan Bachuwa, M.D.  
 Walter Barkey, M.D.  
 Brian Beck, D.O.  
 John Behm, M.D.  
 Donna Benford, D.O.  
 Douglas Benton, D.O.  
 Regis Benton Jr., D.O.  
 Seth Bernard, D.O.  
 William Bernard, D.O.  
 Jagdish Bhagat, M.D.  
 Brian Bhagat, M.D.  
 Amy Blaising-Wallace, D.O.  
 Marta Bonkowski, M.D.  
 Jeffrey Bossenberger, M.D.  
 David Brandreth, D.P.M.  
 Larry Braver, D.O.  
 Kelvin Callaway, M.D.  
 Eugene Chardoul, M.D.  
 Patrick Chang, M.D.  
 Soon Choi, M.D.  
 Stanley Conhon, M.D.  
 John Commet, D.O.  
 Ronald Coriasso, D.O.  
 Riad Dali-Ahmad, M.D.  
 Naketa Dani, M.D.  
 E.J. Daros, D.O.  
 Antony Daros, D.O.  
 Deborah Duncan, M.D.  
 Ernesto Duterte, M.D.  
 Myriam Edwards, M.D.  
 Delia Ebuon-Mercado, M.D.  
 Hytham Fadl, M.D.  
 Jodi Flanders, D.O.  
 Abeer Fayyad, M.D.  
 Brenda Fortunate, D.O.  
 Kenneth Ganapini, D.O.  
 Mary Ghalib, M.D.  
 Edward Ghattas, D.O.  
 Edward Gomez-Seoane, M.D.  
 Kazem Hak, M.D.  
 Stephen Harrison, D.O.  
 Christopher Harrison, D.O.  
 Kim C. Hendricks, M.D.  
 Edward Holden, M.D.  
 Milton Holloway, M.D.  
 Cynthia Horning, M.D.  
 Bill Hukill, D.O.  
 Alicia Imperial, M.D.  
 Georgio Imperial, M.D.  
 Tejal Joseph, M.D.  
 Rachel Kasperowicz, M.D.  
 Jitendra Katneni, M.D.  
 Parmanand Khandelwal, M.D.  
 Gary King, M.D.  
 Kinran, Kinra, M.D.  
 Naresh Kinra, M.D.  
 Samasandrapalya Kiran, M.D.  
 Prasad Kommareddi, M.D.  
 Renee Krusniak, D.O.  
 Kathleen Kudray, D.O.  
 Nita Kulkarni, M.D.  
 Wendy Lawton, M.D.

Dennis Lloyd, D.O.  
 Marco Machado, M.D.  
 Caroline Matthews, M.D.  
 Henry Mendoza, M.D.  
 Aram Minasian, M.D.  
 Usha Modi, M.D.  
 Shaheen Mohammed, M.D.  
 Lisa Moody-Oltman, M.D.  
 Bobby Mukkamala, M.D.  
 Kienan Murphy, D.O.  
 Gerald Natke Jr., M.D.  
 Steven Neirink, D.P.M.  
 Mark Neumann, D.O.  
 Kristen Nikolakeas, D.O.  
 Linda Norrell, M.D.  
 Damayanthi Pandrangi, M.D.  
 D.V. Pasupuleti, M.D.  
 Ravikumar Peddireddy, D.O.  
 Miguel Perez Pascual, M.D.  
 Mona Perry, M.D.  
 Ariel Ponce, D.O.  
 Abdullah Raffee, M.D.  
 Richard Rankl, M.D.  
 Rama Rao, M.D.  
 Sridhar Rao, M.D.  
 Harvey Ring, D.O.  
 Abdallah Rizk, M.D.  
 Paral Sud, M.D.  
 Elmahdi Saeed, M.D.  
 Osman Saeed, M.D.  
 Saed Sahouri, M.D.  
 Cristie Samuels, M. D.  
 Sarah Sanchez, M.D.  
 Rajalakshmi Sankaran, M.D.  
 Ashish Sarin, M.D.  
 Syed Sattar, M.D.  
 Bhagwan Sayal, M.D.  
 Byron Schoolfield, M.D.  
 David Schwarz, M.D.  
 Mark Schaaf, D.O.  
 Silva Seoane, M.D.  
 Ronald Shaheen, D.O.  
 Theresa Sherman, M.D.  
 Thomas Shuster, D.O.  
 Joseoh Simmert, D.O.

Dirk Snyder, M.D.  
 Kevin Snyder, D.O.  
 Kenneth Steibel, M.D.  
 Tommy Stevens, M.D.  
 John Stoker, D.O.  
 Randall Sturm, M.D.  
 Nilfer Sumer, M.D.  
 Rajakumari Swamy, M.D.  
 Brad Sweda, M.D.  
 Mohammed Syed, M.D.  
 Frederick VanDuyne, M.D.  
 Koteswara Vermuri, M.D.  
 Sasikala Vemuri, M.D.  
 Carol Voremkamp-Cooper, D.O.  
 Lynn Walker, M.D.  
 James Walter, M.D.  
 Melinda Wheatley, M.D.  
 Carol Wyse, D.O.  
 Kenneth Yokosawa, M.D.  
 Michael Young, D.O.  
 Kevin Youngs, M.D.  
 Michael Ziccardi, D.O.

### Art School

Mr. & Mrs. Robert A. Ackerman  
 Arthur G. Bishop Charitable Trust  
 Mr. David Gaines  
 Genesee Valley Rotary Club  
 James A. Welch Foundation  
 Mr. & Mrs. Mark E. Knapp  
 Ms. Katherine Maitland & Mr. Barry McGhan  
 Mrs. Sally J. Moss  
 Ms. Ashley V. Randall  
 Ms. Marsha Schmit  
 Mrs. Donna Smalley  
 Stella & Frederick Loeb Charitable Trust  
 Mr. & Mrs. Jim Wascha

### Art School EDW Fund

Anonymous  
 Arthur G. Bishop Charitable Trust

The Benevity Community Impact Fund - Matching Grant  
 Ms. Bernie Bishop  
 The Chan Family  
 Charles Stewart Mott Foundation  
 Doris A. Sutton Irrevocable Trust  
 The Isabel Foundation  
 Mr. & Ms. Daniel Richards  
 Chuck & Kathryn Sharbaugh

### Collections

Tom & Kay Lillie  
 Grant from the Shand Family Fund  
 The Sheppy Dog Fund, Dr. Alan Klein, Advisor  
 Susie Thompson  
 Mr. William S. White

### Expansion Project Fund

Falding Bishop  
 Donald A. & Lavonne C. Bomeli  
 Patrick Botz, D.O.  
 Eleanor E. Brownell  
 Sally Case  
 Charles Stewart Harding Foundation, in honor of Claire M. White  
 Mary Coleman  
 Susan & George Cross  
 Bob & Luce Daly  
 Rosemary R. DeCamp  
 Mr. Robert F. Dueweke  
 Mr. Chris & Dr. Jean Dundas, in honor of Kathryn Sharbaugh  
 Ryan Michael Eashoo  
 Ms. Loretta Ellwood  
 Brenda Fortunate, D.O. & Edward White  
 Deb Gustafson & Sue Weston  
 Ingrid Halling & Robert Thomas  
 Jan & John Hartranft  
 Annetta Hendrickson

Edward & Donna Henneke  
 Mr. & Mrs. John B. Henry  
 Mrs. Ethel Hooker  
 G. Donald & Elaine W. Kaye  
 Ruth L. Leder  
 Raymond & Pamela Lee  
 Max Lepler & Rex L. Dotson  
 Glenn & Regina Lysinger  
 Mrs. Mary Markel  
 Rosellen McAlear  
 Patricia & Edward Meier  
 David & Karen Miller  
 Robert & Barbara Mills  
 Marlene Morris  
 Sharon Y. Naughton  
 Carole A. Pappas  
 William H. Piper  
 Frances J. Price  
 Gary & Barbara Stone Reetz  
 Jacquelyn Reinerton  
 Howard & Tammy Schultz  
 Marsha Schwarz  
 Chuck & Kathryn Sharbaugh  
 Ms. Ruth Thrash  
 Rita Valley  
 Charles & Chery Wagonlander  
 Clair & Darlene Ward  
 Janet Williamson  
 Mr. & Mrs. Mike Wilson

### Education

Mr. James R. Chintyan  
 Ms. Rebecca Gale-Gonzalez  
 Merkley-Elderly Charitable Trust  
 Mott Community College  
 Nartel Family Foundation  
 The Sheppy Dog Fund  
 Ms. Emily Varney

### Endowment

Adult Learning Institute, in honor of Tracee Glab  
 Mr. Christopher Carr

Mr. Ryan M. Eashoo  
 Genesee Valley Center  
 Ms. Cynthia Griffin & Mr. Stephen Haller  
 Mr. & Mrs. Daniel Harrett  
 Mr. & Mrs. William Hasenohr - In honor of Sheppy Dog  
 Dr. Jamile T. Lawand & Mr. Barry J. Carr  
 Mr. & Mrs. Richard C. Noble  
 Matt & Elaine Pawlik - We Wish You Were Here Invitational

### Event Sponsors

Al Serra Auto Plaza  
 All Weather Seal Co., Inc.  
 Henry & Mary Allen  
 Alpha, Kappa Alpha Sorority, Inc.,  
 Alpha Phi Alpha Fraternity, Epsilon  
 American Electric Motor Corp.  
 American Machining, Inc.  
 Dawn Hausch-Cooper, Ameriprise Financial  
 Applegate Chevrolet Co.  
 Arby's  
 Christopher J. Ash, D.O. & Shannon Ash  
 Associated Radiologists of Flint/ Greater Flint Imaging  
 ATI Group  
 Baker Center for Graduate Studies  
 Walter & Linda Barkey  
 Barnes & Noble  
 Nicole Barrett, Rodan & Fields  
 BB&E Inc.  
 Mike Behm  
 Bennett Communication Solutions  
 Clara Blakely & Erica Leverette  
 Bodman PLC - Todd Flood & Bonnie Sherr Flood, Andrea & Courtland Anderson, Joseph Kochanek, Carrie Leahy & Timothy Wilhelm, Frederick & Joan Dindoffer

Blessing Co.  
 James and Kathryn Boles  
 James & Kathy Boles  
 Brown & Brown of Michigan, Inc.  
 Mrs. Edmund B. Brownell  
 Eleanor E. Brownell  
 Case Island Glass, LLC  
 Chassé Ballroom  
 The Chosen Few  
 Cislo Title Co.  
 Cline, Cline & Griffin, PC  
 Communities First, Inc.  
 Community Podiatry Group - Dr.  
 David Taylor, Dr. Shawn Reiser,  
 Dr. Dean Singer  
 Consumers Energy  
 Christine Cook  
 Samuel J. Cox, McDonald  
 Restaurants  
 Cracker Barrel Old Country Store  
 Davenport University  
 Mr. Durfee Day  
 Dee Cramer Inc.  
 Delta Sigma Theta Sorority, Inc.  
 Dewey's Auto Center  
 Diplomat Specialty Pharmacy  
 Pete & Sally Doneth  
 Dort Federal Credit Union  
 ELGA Credit Union  
 Michael Evanoff  
 Mr. & Mrs. Troy Farah  
 Zouheir Fares, D.O. FACOS  
 Fifth Third Bank  
 John & Janie Fleckenstein  
 Loyst Fletcher, Jr. & Associates  
 Flint Welding Supply Company  
 Flint Area School Employees C.U.  
 Flint Cultural Center Corporation  
 Flint & Genesee Chamber of  
 Commerce  
 FM Financial Credit Union  
 John & Catherine Fredrick  
 Bob & Joanne Fuller  
 FUNchitecture, LLC  
 The Genesee Group

Genesee Urgent Care  
 Genesys Health System  
 Gill-Roy's Hardware  
 Glenwood Cemetery Association  
 Great Lakes Family Dental Group  
 Greater Flint Chapter of the  
 Pierians, Inc.  
 The Green Group of Morgan  
 Stanley  
 Bobby J. Grossi, DDS, Gateway  
 Dental  
 The Haffajee Group  
 Hamilton Community Health  
 Network  
 The Hamo Group of Wells Fargo  
 Advisors  
 Louis Hawkins  
 HealthPlus  
 William Hentgen  
 Hi-Tech Protection, Tim & Belinda  
 Johnson  
 Hodges Supply Co.  
 Hurand Family  
 Gary & Carol Hurand  
 Lynne Hurand  
 Dr. & Mrs. John Isaac  
 Jack & Jill of America, Inc. - Flint  
 Chapter  
 Jennifer Lasco Real Estate  
 Kelly-Younger Interiors, Inc.  
 Kettering University  
 Michael Kia, D.O. FACOS  
 Drs. Mona & Sam Kiran  
 Dr. Prasad & Jayashree  
 Kommareddi  
 The Kristy Cattleberry Real Estate  
 Team  
 Lake & Land Custom Homes, LLC  
 Landaal Packaging Systems  
 Lang Constructors, Inc.  
 Lawrence E. Moon Funeral Home  
 Linda J. LeMieux  
 Lewis & Knopf, CPAs, P.C.  
 Tom & Kay Lillie  
 Kris & Handy Lindsey

The Links, Inc. - Flint Area Chapter  
 Little Joe's  
 John & Nicole MacDonald  
 Dr. Ramotsumi & Velynda Makhene  
 DeAndra McCain  
 Georgia McCall  
 McCredie Insurance Agency  
 McLaren Flint  
 Michigan Carts  
 Mr. Mark Mikolajczak  
 Thomas J. Mitchell  
 Kitty & Bill Moeller  
 Mott Children's Health Center  
 Mott Community College  
 Drs. Bobby & Nita Mukkamala  
 Dr. & Mrs. Kienan F. Murphy  
 Dr. Kienan Murphy, The Children's  
 Office  
 Atty. Matthew L. Norwood  
 Kay O'Malia & Don Fochtman  
 Olmsted Associates, Inc.  
 Oppenheimer & Co., Inc.  
 Outfront Media  
 Paw Palace  
 Peabody Insurance Agency  
 Mr. & Mrs. Michael Phillips  
 Bob Piper  
 PNC Bank  
 Rama D. Rao, M.D  
 Raymond James  
 Dr. Shawn L. Reiser & Dr. David  
 Taylor, Community Podiatry  
 Group, PC  
 Mr. Milton & Dr. Brenda Rogers  
 Grays  
 ROWE Professional Services Co.  
 Michael & Virginia Rucks  
 The Rutherford Group  
 Ann & Khalil M. Saab  
 Sabita Tummala  
 Serra Benefits Group  
 Shaltz Automation  
 Phillip & T. Ardele Shaltz  
 Kathryn & Chuck Sharbaugh  
 Sharp Funeral Homes

Siwek Construction Co.  
 Skaff Carpet & Furniture Co.  
 Ms. Sheila R. Smith  
 Sorensen Gross Co.  
 Jim & Patt Spangler  
 Ken & Linda Steibel  
 Theresa A. Stephens-Lock  
 Stephens Wealth Management  
 Group  
 Susan Stuewer & Randy Piper  
 Superior Building Services  
 Swartz Creek Veterinary Hospital  
 Drs. David T. Taylor & Shawn L.  
 Reiser  
 Team One Credit Union  
 The Torch Bar & Grill  
 Totem Books & Cafe  
 Tom & DeAnn Townsend  
 UAW Region 1-D  
 Upsilon Lambda Chapter  
 Vic Bond Sales  
 Dr. & Mrs. Michael Wallace  
 WCMU  
 Dr. Jay & Jan Werschky  
 Werschky & Lewis Family Dentistry  
 Whigville Market  
 The William's Firm, PC.  
 Douglas & Dawn Wyrwicki  
 Yeo & Yeo CPAs & Business  
 Consultants  
 Zeta Beta Omega Chapter

## Exhibition Sponsors

FirstMerit Bank  
 Founders Society  
 Helen Philpott Fund for Children  
 of the Community Greater  
 FlintFoundation of  
 Michigan Humanities Council  
 National Endowment for the  
 Humanities

## Flint Print Club

Ms. Valarie Allen  
 Mr. & Mrs. Gordon Andrews  
 Mr. Anthony J. Artis  
 Mr. & Mrs. Robert L. Bessert  
 Mr. & Mrs. Ryan & Tracy Bessert  
 Mr. & Mrs. Dean Bonesteel  
 Mr. & Mrs. Charles Clarke  
 Mr. Joseph Coriaty  
 Mr. & Mrs. F. James Cummins  
 Mr. Greg Edquist  
 Mr. Donovan Entreklin  
 Mr. Robert Evans & Mrs. Diane  
 Donley  
 Mr. Michael Farrell & Mr. Marc  
 Herrick  
 Mr. & Mrs. Mark Farella  
 Ms. Nora G. Fisher  
 Jeff & Tish Garrett  
 Mr. & Mrs. Jeff Garrett  
 Mr. Thomas M. Gervasi  
 Mr. & Mrs. Jonathan Glab  
 Ronda Goldfarb  
 Ms. Ronda W. Goldfarb  
 Mr. & Mrs. Walter Griffin  
 Mr. & Mrs. Tony Hain  
 Mr. Mark Hamel & Mr. Mike Green  
 Samuel & Graciela Harris  
 Mr. & Mrs. Richard S. Harris  
 Mr. Louis A. Hawkins  
 Mr. & Mrs. Neal Hegarty  
 Mr. & Mrs. John B. Henry  
 Ms. Valorie Horton  
 Ms. Ann Howard  
 Mr. & Mrs. Gary J. Hurand  
 Mr. & Mrs. Josh Hurand  
 Ms. Lynne Hurand  
 Ms. Sara Hurand & Mr. Elie Weiss  
 Judith M. & Robert J. Irwin II  
 Ms. Heather Jackson  
 Ms. Jimmye Johnson  
 Mr. & Mrs. James N. Johnson  
 Mr. & Mrs. Christopher S. Kelly, Sr.  
 Ms. Donielle Keyes



Dr. Samasandrapalya Kiran & Dr. Mona Hardas  
 Mr. & Mrs. Wes Kohn  
 Ms. Natalia LaFuente  
 Mr. Miles Lam  
 Mr. & Mrs. James Lane  
 Dr. Jamile T. Lawand & Mr. Barry J. Carr  
 Miss Emily Legleitner  
 Mr. Max Lepler & Mr. Rex L. Dotson  
 Tiffany & Bob Lovett  
 Mr. Michael Martin & Mr. Bryan Paris  
 Mr. & Mrs. Sean McCormick  
 Mr. & Mrs. David S. McCredie  
 Mr. Thomas J. Mitchell  
 James R. & Helen Sue Morgan  
 Drs. Bobby & Nita Mukkamala  
 Dr. & Mrs. Kienan F. Murphy  
 Mr. Patrick Murray & Mr. James Edwards  
 Mr. & Mrs. Ed Ogul  
 Mr. Karl Olmsted  
 Mr. & Mrs. Peter Ott  
 Mr. & Mrs. Gary Philpott  
 Mr. Wayne Pickvet & Mr. Bruce A. Barrett  
 Mr. & Mrs. Mark Piper  
 Mr. Randolph P. Piper & Mrs. Susan I. Stuewer  
 Mr. & Mrs. Brian Renaud  
 Mr. & Mrs. Nicholas Robinson  
 Mr. & Mrs. Timothy C. Sanford  
 Ms. Yvette Shufford  
 Mr. & Mrs. John P. Siler  
 Mr. Mike D. Smith & Ms. Trish M. Zito-Smith  
 Mr. & Mrs. William R. Stolpin  
 Dr. David Taylor  
 Ms. Kathleen A. Weiss  
 Dr. & Mrs. Jay A. Werschky  
 Mr. & Mrs. Ridgway H. White  
 Mr. William S. White  
 Mr. & Mrs. Dean Yeotis  
 Mr. Stephen Zulinski

## Film Society Members

Ms. Susan Steiner Bolhouse  
 Mr. & Mrs. Edwin Bradley  
 Bob & Cindy Buckel  
 Mr. & Mrs. Tom E. Butts  
 Ms. Candace Caveny Collins  
 Sam & Bonnie Chambers  
 Mrs. Kay Cherry  
 Mr. & Mrs. Allan Coon  
 Samuel & Darylee Coplin  
 Ms. Lois Craig  
 Mr. & Mrs. Harry Cybulski  
 Carol Egloff  
 Ms. Marcia L. Elbert  
 Ms. Patricia Emenyonu  
 Ms. Geraldine Erwin  
 Mr. Richard W. Fortner  
 Dr. Brenda Fortunate & Mr. Edward White  
 Ms. Virginia Gaffney  
 Mr. & Mrs. Robert Gardner  
 Ms. Kathleen George  
 Terrie Gilmour  
 Mr. Tom Glasscock & Ms. Helen Bas  
 Mr. & Mrs. Eugene B. Griffel  
 Mr. John Hemingway & Mrs. Connie Palmer  
 Mr. Richard H. Hoag  
 Ms. Barb Huffman  
 Mr. & Mrs. Franklin H. Kastle  
 Mr. & Mrs. Lee LaVictoire  
 Steve & Katie Leist  
 Mr. & Mrs. Richard Lutgens  
 Ms. Maureen MacVay  
 Mr. & Mrs. Charles Marshall  
 Ms. Marilyn Mazanec  
 Mr. & Mrs. Sean McCormick  
 Dr. Andreas Mebert & Dr. Laura Mebert  
 Mr. & Mrs. Ed Meier  
 Ms. Heather Meier  
 Mr. Herb Merrell

Mr. Shai M. Brosh & Ms. Christine Mieloch  
 Mr. & Mrs. Robert W. Myers  
 Mr. Michael Orr & Ms. Darla Orr  
 Ms. Suzanne Owen  
 Ms. Alta Parsons  
 Mr. John Pendell & Ms. Vickie Larsen  
 Mr. John Peters  
 Mr. & Mrs. Carl A. Pohly  
 Mr. Brian Polisky & Ms. Leslie Trout  
 Dr. & Mrs. George D. Politis  
 Ms. Lori Popyk  
 Dr. Jacquelyn Reinertson  
 Ms. Carla Russell  
 Mr. & Mrs. Roy Sabo  
 Dr. & Mrs. Rabbi Salimi  
 Mr. & Mrs. Mark A. Schwartz  
 Ms. Marsha V. Schwarz  
 Mr. & Mrs. Bob Shaw  
 Ms. Sandra K. Smith  
 Ms. Shelley R. Spivack & Mr. Justin Scanlon  
 Ms. Elizabeth Svoboda  
 Ms. Carolyn Szaroletta  
 Mr. Mark A. Walters  
 Ms. Alice Ward  
 Mr. & Mrs. David Wharton  
 Ms. Marilyn Willingham  
 Ms. Janette A. Wilson  
 Mr. Richard Wurtz  
 Mr. Frank Yon

## Film Society Sponsors

Mr. Carroll G. Baker & Ms. Kimberly Roberson  
 Mrs. Edmund Brownell  
 Guardian Security Services, Inc.  
 Mr. & Mrs. John B. Henry  
 Ms. Carol Masse  
 Merrill Lynch: John MacDonald, Patrick O'Sullivan, Param Puri, Jerry Rhoden, David Vallie, Paul Wenstrom, Donald Zandstra

Dr. & Mrs. Kienan F. Murphy  
 Ms. Linda L. Pylypiw  
 Drs. Michael & Virginia Rucks

## General Contributions

Art House Lectures & Tours, Inc.  
 Mr. & Mrs. Robert Burger  
 Mr. & Mrs. Adam Carlson  
 Charles Stewart Harding Foundation  
 Charles Stewart Mott Foundation  
 Community Foundation of Greater Flint, advised by William H. Piper  
 Mrs. Rosemary R. DeCamp  
 Mr. Michael Farrell & Mr. Marc Herrick  
 Flint Community Fund of the Community Foundation of Greater Flint  
 Founders Society  
 Mr. David Gold  
 Ms. Lynne Hurand  
 Ms. Siti Mariah Jackson  
 Mr. Max Lepler & Mr. Rex L. Dotson  
 Jay & Marilyn Nelson of the Nelson Family Foundation  
 Mr. George A. Pope  
 Mr. & Mrs. Carl Riseman  
 The Sheppy Dog Fund  
 Mr. & Mrs. Ivan Smith  
 Ms. Marta Wyngaard-Tavakoli  
 Mr. & Mrs. Paul A. Zimmermann

## Gift of Flint Print Club

Mr. & Mrs. Gary J. Hurand for Josh & Ashley Hurand  
 Mr. & Mrs. Gary J. Hurand for Sara Hurand & Elie Weiss  
 Mr. William S. White for Ridgway & Shannon White  
 Mr. William S. White for Tiffany & Bob Lovett

## Gift of Membership

Mr. & Mrs. Tim Abbott for Barbie Borrey & Douglas Abbott  
 Sonny Adkins for Cheryl Hislop & Roosevelt Sims  
 Ms. Michelle Alexander for Cindy & Mike O'Dea  
 Mrs. Jeneil M Applegate for Elizabeth Brady Marasco  
 Ms. Shelia Auten for Paul & Joselyn Arteaga  
 Gary & Maureen Bates for Avery Bates-Kirby  
 Mr. & Mrs. Fred H. Bellairs for Sherry Nelson  
 Harvey & Janice Blanck for Leslie Seigrist  
 Harvey & Janice Blanck for Connor Seigrist  
 Harvey & Janice Blanck for Tucker Vasicek  
 Ms. Deborah Boye for Roberta Boye  
 Child Care Network  
 Mr. & Mrs. Donald Christensen for Peter & Debra Samson  
 Ms. Patricia J. Cleland for Sandy Malnar  
 Communities First, Inc. for Brenness Carnes Ferguson  
 Communities First, Inc. for Roshanda Townsend  
 Ms. Gail M. Curry for Dr. & Mrs. Ariel Ponce  
 Ms. Diana Cypret for John & Twyla DeLapp  
 Mrs. Veronica Davenport for Stephanie Natzke  
 Dr. Deb Doherty for Rick & Jacki Lutz from Mom & Del  
 Mr. & Mrs. Chris Dulling for Caroline McClellan  
 Ms. A. Joan Fischer for Alyssa LaFave

Flint Classroom Support Fund for many teachers  
 Ms. Kathleen George for Kathleen Moore  
 Mr. & Mrs. Gary J. Hurand for Josh & Ashley Hurand  
 Mr. & Mrs. Gary J. Hurand for Sara Hurand & Elie Weiss  
 Mrs. Gail D. Hutchison for Thom Hutchison  
 Mr. Paul Igram for Michele Igram  
 Mrs. Kimberly Jackson for Joshua Jackson & Margaret Denner  
 Mr. & Mrs. Paul Johnson for Luan Brownlee & Allen O'Dell  
 Ms. Mary Rose Karl for Ronald Krueger  
 Ms. Diane Kelly for Virginia Gaffney from Connor Kelly  
 Ms. Sarah Letterman for Rebecca Letterman  
 Mr. & Mrs. Clifford Lutz for Rachel Nagy  
 Mr. & Mrs. Clifford Lutz for Davina Pendragon  
 Mr. Grant McNally for Celeste McNally  
 Mr. David Merot & Ms. Milo Mott for Summer Switzer  
 Mr. Donovan Miske for Raul Andino  
 Mr. Donovan Miske for Theodore Fellenbaum  
 Mr. Donovan Miske for Melissa Kitzman  
 Mr. Donovan Miske for Tina Marie McGinnis  
 Mr. Donovan Miske for Charles Rollison  
 Mr. Donovan Miske for Vino Raj  
 Ms. Kathleen Moore for Teresa Porteous  
 Mr. Brandon Morgan for Pamela Morgan  
 Ms. Renee Philippi & Mr. Stefan Hagen for Dominic Philippi

Mr. Mort Potter for Kendel Reimann Darragh & Scott Darragh  
 Mrs. Fouad Rabiah for Sarah Rabiah Harmon  
 Mrs. Fouad Rabiah for William Rabiah Harmon  
 Mrs. Fouad Rabiah for Victoria Ybarra  
 Ms. Sally Ross for Susan Ross  
 Ms. Patrice Shriver for Thomas Shriver  
 Mr. Patrick Simen for Margaret Simen  
 Ms. Beth M. Slavitt for Lesley Slavitt & Doug Knerr  
 Mrs. Jill Sodt for Kathleen Goodrow  
 Mrs. Jill Sodt for Kathy Suski  
 Mrs. Jill Sodt for Michelle Theil  
 Ms. Tonya Speakes for Aron McCormick  
 Ms. Keely Sugden for Suzanne Sugden  
 Mr. William S. White for Tiffany & Bob Lovett

### Grants

Agnes Bower Charitable Trust  
 Arthur G. Bishop Charitable Trust  
 The Benevity Community Impact Fund - Matching Grant  
 Charles Stewart Mott Foundation  
 Community Foundation of Greater Flint  
 Community Foundation of Greater Flint, advised by William H. Piper  
 Consumers Energy Foundation  
 Flint Community Fund of the Community Foundation of Greater Flint  
 Helen Philpott Fund for Children of the Community Foundation of Greater Flint

James A. Welch Foundation Stella & Frederick Loeb Charitable Trust  
 Katharine B. Miner Trust  
 Kommareddi Family Fund of the Community Foundation of Greater Flint  
 Merkley-Elderly Charitable Trust  
 Michigan Humanities Council  
 Jay & Marilyn Nelson of the Nelson Family Foundation  
 Peter D. & Nancy P. Kleinpell Fund of the Community Foundation of Greater Flint  
 The Shand Family Fund  
 Stella & Frederick Loeb Charitable Trust  
 Alan & Jean Weamer  
 Whiting Foundation

### In-kind Sponsors

Barnes & Noble  
 Outfront Media  
 WCMU

### Tributes & Memorials

**In memory of Marvin L. Allen to support the Art School Endowment Fund**  
 Mr. Jeffrey S. Addison  
 Mrs. Dolores R. Allen  
 Ms. Valerie F. Allen  
 Mr. & Mrs. Tony Mahoney  
 Chuck & Kathryn Sharbaugh  
**In memory of Joellen "Jody" Arvoy to support Exhibitions Endowment Fund**  
 Mr. & Mrs. Timothy Allen  
 Mr. & Mrs. John Arvoy  
 Mr. Morris J. L. Arvoy & Ms. Emily McCaleb  
 Mr. & Mrs. Dale Dawson  
 Chuck & Kathryn Sharbaugh

Mr. & Mrs. Michael Melet  
 Mr. & Mrs. Ray N. Sinclair

### In memory of Thomas W. Calhoun to support Art School Endowment Fund

Ms. Sally Baker  
 Ms. Martha Calhoun  
 Ms. Norma Calhoun  
 Mr. & Mrs. Todd Calhoun to support the Thomas W. Calhoun Scholarship Fund  
 Mr. & Mrs. Wilbert C. Calhoun  
 Tom & Gail Gering, Sue & Roy Payne, Dennis & Gayle Calhoun  
 Mr. Mark White & Ms. Erica Mercer  
 Mr. Randle Samuels & Ms. Gail Offen-Samuels  
 Ms. Helen Brady & Mr. Rick Sanders  
 Kathryn Sharbaugh  
 Mr. & Mrs. John Stevens  
 Mrs. Kathleen Tingley  
 Susan & Dean Trilling  
**In memory of Eva Daniel to benefit Youth Programs**  
 Ms. Laura M. Nicholas Jankowski  
 Mr. & Mrs. Tom Peterson  
 Mr. David Wolbert

### In memory of Beverly Danks

Ms. Gabrielle Bunker  
 Ms. Jan Giesken  
 Mr. & Mrs. Steve Martin  
 Dennis & Karen Pinkston  
 Mr. & Ms. Ken Roof  
 Mr. & Mrs. Don Smith  
 Mr. & Mrs. Robert J. VanDuyne  
 Mr. Eric Warsin  
 Ms. Shirley Wolff

### In memory of Madge Day

Mr. Durfee Day  
**In memory of Albert Fialka to support the Endowment Fund**  
 Dr. B. Kay Campbell

Mr. John Fialka  
 Ms. Lisa Frazee  
 Mr. & Mrs. Eugene B. Griffel  
 Ms. Barbara A. Hallwood  
 Mr. & Mrs. Joseph M. Novajosky  
 Retired Men's Fellowship of Greater Flint  
 Runyan Lake Point Property Owners Association

### In memory of Albert G. & Dolores I. Fialka

Mr. Richard W. Fortner

### In memory of Alice Foster to support the Art School Scholarship Fund

Mr. Thomas Calhoun

### In honor of Joanne Fuller's Birthday

Mr. Charles Shelley

### In memory of Bess Hurand to support the Bess Hurand/Dr. Ben Bryer Education Endowment Fund & the Hurand Sculpture Purchase Fund

Mr. & Mrs. Kelly B. Beardslee  
 Ms. Janet A. Schultz  
 Dr. & Mrs. Milton J. Siegel  
 Mr. Joseph A. Sisson & Ms. Margaret A. Campbell  
 Mr. & Mrs. Michael Bourke  
 Mr. & Mrs. F. James Cummins  
 Joanne & Bob Fuller  
 Ms. Olivia P. Maynard & Mr. S. Olof Karlstrom  
 Mrs. Sally J. Moss  
 Mrs. Colleen C. Nickel  
 Plante Moran

### In memory of Bess Hurand to support the Art Sales & Rental Gallery

Gerald & Suzanne Walters

**In memory of Arthur & Bess  
Hurand to support the Bess  
Hurand/Dr. Ben Bryer Education  
Endowment Fund & the Hurand  
Sculpture Purchase Fund**

East Court Divas

Mr. Andy Ratner, in appreciation for  
all that Art & Bess have done for  
the Ratners

Gerald & Suzanne Walters

**In honor of Mr. & Mrs. Gary  
Hurand and Mrs. Denise Morgan**

Anonymous

**In memory of Fred Luten to  
support Art School Endowment**

FIA Staff

**In memory of Mary Randall  
to support the Art School  
Endowment Fund**

Mrs. Laura Alderman

Anonymous

Ms. Kimberly A. Bodette

Mr. & Mrs. Jason Evans

Mr. & Mrs. James P. Ford

Dr. & Mrs. Scott Garner & Family

Kellogg Family: Barb, Peg, Pam,  
Denise, Pat, Fred & Sophie

Ms. Charlotte A. McCormick

Ms. JoAnn Miller

Chuck & Kathryn Sharbaugh

Mr. & Mrs. Paul Wenstrom

**In celebration of the birth of our  
granddaughter, Isabel Rose Saab**

Mr. & Mrs. Khalil M. Saab

**In honor of Grayce Scholt's 90th  
Birthday**

Dr. Audrey L. Lattie

Mr. & Mrs. Arnie Seeger

Mr. Mark Seeger & Family

**In memory of Michael A. Stanley**

Ms. Merrilee Stanley

**In memory of Pheobe Stanzler**

East Court Divas

**In memory of E. June Taft**

Mr. & Mrs. John B. Henry

**In memory of Evelyn Battistel**

Mr. & Mrs. Eugene B. Griffel

**In honor of the marriage of  
William White & Louise Hartwell  
to support the Expansion  
Endowment**

Flint Community Fund of the

Community Foundation of

Greater Flint advised by William

H. Piper

Mr. & Mrs. John B. Henry

Chuck & Kathryn Sharbaugh

**In memory of Dr. Ruben Wisnudel**

Mrs. Pauline Fishler

# Membership

\* denotes increased gift level

+ denotes Friends of Modern Art (FOMA) membership

Δ denotes Founders Society membership

## Rubens Society

(\$1,000 & above annually)

### Business

Baker College  
Big John Steak & Onion, Inc.  
Fabiano Brothers, Inc.  
Hubbard Supply Co.  
Main Manufacturing Products  
Sorensen Gross Construction Co.

### Individual

Dr. & Mrs. Daniel AnbeΔ  
Mr. Carroll G. Baker & Ms. Kimberly Roberson+Δ  
Mr. & Mrs. Richard P. BaksΔ  
Mr. William Ballenger III & Ms. Susan Steiner Bolhouse  
Mrs. Beverly Bernard  
Mr. & Mrs. Robert L. Bessert+Δ  
Ms. Elizabeth Bishop  
Falding Bishop  
Mr. & Mrs. James Boles  
Mrs. Edmund Brownell+Δ  
Mr. & Mrs. Howard J. Bueche  
Dr. Stephen R. Burton  
Mr. & Mrs. Chapin Cook+Δ  
Maureen & George Corser+Δ  
Mr. Donald Davenport  
Mr. & Mrs. Max Dean+Δ  
Mr. & Mrs. James D. Draper+Δ  
Mr. & Mrs. Harry L. Eiferle, Jr.  
Mr. & Mrs. Louis Emmert  
Mr. Robert F. Enders  
Mr. & Mrs. Michael A. Farella\*+  
Mr. Michael Farrell & Mr. Marc Herrick+Δ  
Joanne & Bob Fuller  
Hank & Bonnie Graff  
Mr. & Mrs. Neal Hegarty  
Mr. William J. HentgenΔ  
Mr. & Mrs. Timothy Herman  
Mr. & Mrs. Joseph Higgins  
Mr. & Mrs. Gary J. Hurand+Δ  
Ms. Lynne Hurand+Δ  
Mrs. Judith Jacobson

Mr. & Mrs. James N. Johnson  
Michael & Kay Kelly  
Mr. & Mrs. Raymond J. Kelly III  
Mrs. Harriet B. Kenworthy  
Mr. James R. Kettler  
Dr. Samasandrapalya Kiran & Dr. Mona Hardas  
Mrs. Nancy Kleinpell  
Mr. Wayne W. Knecht  
Albert & Barbara Koegel+Δ  
Ms. Kathryn Koegel+  
Mrs. Virginia R. Landaal  
Dr. Jamile T. Lawand & Mr. Barry J. Carr+Δ  
Mrs. Linda LeMieux  
Mr. Max Lepler & Mr. Rex L. Dotson  
Prosecutor David & Therese Leyton  
Mr. & Mrs. Mark L. Lippincott  
Ms. Jeanette R. Mansour & Mr. Joe Green  
Mr. & Mrs. David S. McCredie\*+  
Dr. & Mrs. Robert McMahan  
Mr. David Merot & Ms. Milo Mott  
Mr. & Mrs. William H. Moeller  
Mrs. Robert C. Morgan  
Drs. Bobby & Nita Mukkamala+Δ  
Dr. & Mrs. Kienan F. Murphy+Δ  
Edward & Elizabeth Neithercut  
Mr. & Mrs. Jay Nelson  
Mr. & Mrs. Patrick O'Sullivan  
Mr. & Mrs. Raymond J. Persia+Δ  
Mr. Randolph P. Piper & Mrs. Susan I. Stuewer+  
Mr. Robert S. Piper+  
Mr. William H. Piper  
Dr. & Mrs. Mark Plucer+Δ  
Ms. Linda L. Pylypiw+  
Mrs. Fouad Rabiah  
Mr. & Mrs. Michael J. Riha+Δ  
Mr. & Mrs. Jeffrey D. Rocco+Δ  
Drs. Michael & Virginia Rucks+  
Dr. & Mrs. Daniel J. Ryan+  
Mr. & Mrs. Khalil M. Saab+Δ  
Mr. & Mrs. Timothy C. Sanford  
Ms. Grayce Scholt+

Dr. & Mrs. Paul E. Schroeder+  
Mr. & Mrs. Philip Shaltz  
Mr. & Mrs. Howard S. Shand  
Chuck & Kathryn Sharbaugh  
Mr. & Mrs. John P. Siler+Δ  
Mr. & Mrs. James Spangler  
Mrs. Helene J. Streich & Mr. James P. Streich  
Ms. Susan E. Thompson+Δ  
Dr. D.J. Trela & Dr. David Bailey+Δ  
Mr. & Mrs. Charles R. Weeks  
Miss Beverly Weidendorf  
Dr. & Mrs. Jay A. Werschky+Δ  
Mr. William S. White & Mrs. Louise Hartwell+Δ  
Mr. & Mrs. Ridgway H. White  
Mr. & Mrs. Jerome D. Winegarden, Jr.  
Mr. & Mrs. Dean Yeotis+Δ

## Business Members

### Business Supporter

(\$250 annually)  
3Sixty Interactive - Dale Keipert & Dean Keipert+Δ  
John K. Costa, AIA Architectural Design & Consultation PLLC+

### Business Sustainer

(\$100 annually)  
Baker College Center for Graduate Studies  
Bishop International Airport Authority  
The Chosen Few Corporation  
Christie's - New York  
Christie's - Chicago  
Davenport University  
Delta Sigma Theta Sorority, Inc.  
Diplomat Specialty Pharmacy  
Dort Federal Credit Union  
FUNchitecture LLC  
Great Lakes Legal Team, PLC  
Greater Flint Chapter of the Greater Michigan Surgeons & Dental Implant Center

Hamilton Community Health  
Network  
Lawrence E. Moon Funeral Home  
McFarlan Kearsley Residence, LLC  
Mott Children's Health Center  
Personal Computing Solutions  
Pierians, Inc.  
PNC Financial Services Group  
PNC Institutional Investments  
The Rutherford Group  
Superior Travel Service  
TeamOne  
Vogt's Flowers  
The Williams Firm, P.C.  
Yeo & Yeo, P.C., CPA

## Individual Members

### Donor

(\$500 annually)

Mr. & Mrs. David F. Barbour\*+  
Mr. & Mrs. Kelly B. Beardslee+Δ  
Dr. & Mrs. Alexander Chan\*+  
Mr. Dallas Dort & Mrs. Sharon A.  
Peterson Dort  
Mr. John Ellenwood\*  
Mr. Ed Fletcher+Δ  
Dr. Brenda Fortunate & Mr. Edward  
White\*+Δ  
Mrs. Donna A. Graham  
Ingrid G. Halling & Robert Thomas+  
Rev. Reginald V. Lancaster & Dr.  
Karen R. Wilkinson  
Drs. Scott & Lisa Langenburg  
Byron & Margie Latter+  
Mr. H. Michael Parker\*+  
Mr. & Mrs. William Peterson  
Mr. & Mrs. David Roeser+Δ  
Dr. & Mrs. Frederick C. Schreiber  
Mr. Paul Sears+

### Sponsor

(\$250 annually)

Mr. Glen Adams+Δ  
Mr. & Mrs. Fenton A. Addington &  
Family+Δ

Mr. & Mrs. Timothy Allen  
Mr. Paul Arteaga & Miss Josclyn  
Arteaga+Δ  
Mr. & Mrs. David F. Barbour\*  
Dr. & Mrs. William M. Bernard+  
Mr. & Mrs. Stephen Bernstein+  
Mr. Stewart Bolinger\*Δ  
Mr. & Mrs. Michael Bourke  
Mrs. Kathleen Brockriede+Δ  
Dr. & Mrs. Robert Burger  
Lt. Gov. John D. Cherry & State  
Rep. Pamela Faris  
Ms. Melba R. ClappΔ  
Mr. & Mrs. Eugene Cronin  
Mrs. Rosemary R. DeCamp\*  
Greg & Karen Eason  
Mr. Harry L. Eiferle III  
Mr. & Mrs. Bennett Engelman\*+Δ  
Mrs. Pauline Fishler+Δ  
Mr. & Mrs. Joseph F. Foos+  
Dr. Brenda Fortunate & Mr. Edward  
White+Δ  
Hon. Judith A. Fullerton & Mr. Ward  
Chapman  
Dr. & Mrs. Scott A. Garner+Δ  
Dr. & Mrs. Rudolf Goetz  
Mr. Earl E. Gravin & Ms. Julia  
Sullivan+Δ  
Mr. & Mrs. Daniel S. Harrett  
Mr. & Mrs. Scott C. Johnson+Δ  
Mrs. Agape Kallis  
Mrs. Marilyn Kopp+Δ  
Mr. & Mrs. John H. Lang+Δ  
Mrs. Sue Lauber+  
Mr. & Mrs. James LayΔ  
Ms. Mary Lazar  
Mr. & Mrs. William Livengood  
Dr. & Mrs. Berton J. Mathias+  
Mr. & Mrs. Robert W. Misekow\*Δ  
Mr. & Mrs. Anthony Mitchell  
Mr. Thomas J. Mitchell+Δ  
Mrs. Sally J. Moss\*Δ  
Ms. Sharon Y. Naughton\*+  
Mr. William B. Neis\*  
Mr. Mark E. Neithercut

Mr. & Mrs. Carl A. Pohly+Δ  
Gary & Barb Reetz+Δ  
Miss Elisabeth Saab+Δ  
Mr. & Mrs. William A. Shaheen, Jr.\*  
Dr. & Mrs. Milton J. Siegel+Δ  
Mr. & Mrs. Eric Smith\*  
Mr. Jeff Stoney\*  
Dr. & Mrs. Thomas Svitkovich\*  
Anton Thornquist\*+  
Mr. & Mrs. Charles F. Wagonlander  
Mr. & Mrs. John Walter & Family+Δ  
Mr. & Mrs. Erik Warren  
Mr. & Mrs. Alan Weamer  
Mr. & Mrs. David E. Wood+Δ

### Sustainer

(\$100 annually)

Mrs. Doris E. Brandt  
Mr. & Mrs. Barry Braun  
Mr. & Mrs. Donald L. Bronson  
Rev. & Mrs. Kendall H. Brown\*  
Ms. Marilyn BrownΔ  
Mr. & Ms. Roger H. Brown+Δ  
Mrs. Heather Burnash  
Mr. Jonathan E. Burroughs II  
Mr. & Mrs. Joseph BurroughsΔ  
Mr. & Mrs. Tom E. Butts+Δ  
Mr. Thomas Calhoun+Δ  
Mr. & Mrs. Adam Carlson  
Mr. Donald Carmody+  
Mr. & Mrs. Michael Chaffee\*+Δ  
Sam & Bonnie Chambers+  
Mrs. Aisha Changezi & Family\*+  
Robin & Kathleen Childress  
Mr. Kurt Civilette & Mr. Douglas  
Postels  
Ms. Betty J. Clark+Δ  
Mr. & Mrs. James Clodfelter, Jr.  
Mrs. Joanne Coates  
Ms. Mary ColemanΔ  
Mr. & Mrs. James Colmer+Δ  
Mr. & Mrs. Thomas Cooper  
Samuel & Darylee Coplin  
Mr. & Mrs. Paul Corliss  
Mr. & Mrs. Kenneth Cowan

Mr. & Mrs. George Cross  
Mr. & Mrs. Daniel CruzΔ  
Mrs. Nancy J. Cunningham\*  
Dr. & Mrs. Michael Danic+Δ  
Mrs. Judith L. Davidson  
Mr. & Mrs. Dennis Davis+Δ  
Ms. Dorothy Gae Davis  
Mr. James A. Davis & Ms. Carol M.  
Fabrizio  
Loretta Davis & Harold Ford\*  
Mr. & Mrs. Donald E. DeGraaf  
Mr. John V. Dempsey & Ms. Margo  
Lakin+  
Mr. & Mrs. Joseph Deneen  
Mr. & Mrs. Robert W. Devereaux\*  
Ms. Stephany R. Diana &  
Mr. Dennis Zawol+Δ  
Ms. Carol Dickinson & Mr. Alvin  
Miller\*  
Mrs. Cheri Dickinson\*  
Mr. & Mrs. John C. Dickinson  
Mrs. Margaret E. Diener+Δ  
Dr. & Mrs. Samuel R. Dismond, Jr.+  
Ms. Jeanne Dobes  
Dr. & Mrs. David G. Drake  
Mr. & Mrs. George Drake+Δ  
Mr. & Mrs. Kenneth Duetsch  
Mr. & Mrs. Robert F. Dueweke  
Mr. Chris & Dr. Jean Dundas+Δ  
Mr. Ryan M. Eashoo+Δ  
Mr. & Mrs. Robert Eastman  
Mr. & Mrs. Richard H. Ebbott  
Miss Judith M. Ebner  
Mr. Thomas Edelen+Δ  
Mr. Greg Edquist+  
Mr. & Mrs. Shantaram G. Ekhande  
Mr. Chuck Elk+Δ  
Mrs. Loretta C. Ellwood+  
Mr. & Mrs. George Emery+Δ  
Mr. & Mrs. Jack W. Ennest  
Dr. & Mrs. Ali A. Esfahani  
Ms. Michelene A. Falk+  
Mr. & Mrs. Daniel FilipovichΔ  
Ms. Tina FiloromoΔ  
Ms. A. Joan Fischer+Δ

Ms. Denise D. Fish+  
Mrs. Billie Fisher+Δ  
Mr. & Mrs. Ron Fitch  
Mr. & Mrs. Ed Fizell+  
Ms. Elaine Flore  
Mr. & Mrs. Richard Foot\*+Δ  
Mrs. Evelyn R. Foreman  
Mr. Donald F. Fournier &  
Ms. Wendy Green  
Mr. & Mrs. Richard Fox+  
Dr. & Mrs. Michael R. FrappierΔ  
Mr. & Mrs. Joshua Freeman &  
Family+Δ  
Mrs. Louise A. Friesen+Δ  
Dr. Donna Fry\*+  
Ms. Patricia Gage+Δ  
Mr. & Mrs. Paul Gallinat Jr.\*  
Mr. & Mrs. Robert Garrison+Δ  
Ms. Kathleen George+Δ  
Mr. Thomas M. Gervasi+Δ  
Mrs. Denise Ghattas  
Mr. & Mrs. Elie Ghattas  
Ms. Anne-Marie Gierens &  
Mr. Curtis Johnson  
Mr. & Mrs. Christopher Giroux  
Mr. & Mrs. Tom Gisewhite+Δ  
Mr. Jesse Glenn & Ms. Tomoko  
Miller+  
Mrs. Roberta L. Goergen  
Debra A. Golden-Steinman &  
Dr. Harold V. Steinman+Δ  
Mr. & Mrs. John Goll\*  
Mr. & Mrs. Mike Gorris\*  
Mr. & Mrs. Melvin E. Gregory  
Mr. & Mrs. Eugene B. Griffel  
Mr. & Mrs. Walter Griffin  
Dr. Peter Gryson & Mrs. Evelyn  
MacKenzie Gryson  
Dr. & Mrs. Edwin H. Gullekson  
Dr. & Mrs. Robert Hahn  
Ms. Sandra L. Haldy  
Mr. & Mrs. William Haley  
Mr. & Mrs. Thomas Halligan+Δ  
Mr. & Mrs. Henry M. Hanfliik+  
Dr. & Mrs. Gary Hankinson

- Mr. & Mrs. Carl Hansen\*+  
Mr. Chad Hansen+Δ  
Mr. & Mrs. James Hanson  
Mr. Donald E. Harbin & Mrs.  
Elizabeth Perkins-Harbin\*+Δ  
Frankie & Robert Hardy+Δ  
Mr. & Mrs. Joel H. Harris+Δ  
Mr. & Mrs. Richard S. Harris+  
Samuel & Graciela Harris  
Mr. & Mrs. John B. Hartranft+  
Ms. JoAnne Hatto+  
Mr. Louis A. Hawkins+Δ  
Ms. Karolatta Heath+Δ  
Mr. John Hemingway &  
Mrs. Connie Palmer+Δ  
Ms. Annetta Hendrickson  
Mr. & Mrs. Kenneth R. Henley\*Δ  
Mrs. Ermie Hermann  
Mr. Robert Hill & Mr. Steven R. Hill+  
Dr. & Mrs. John V. Hinterman  
Mr. & Mrs. Michael HintermanΔ  
Mr. & Mrs. Py Hockin  
Ms. Ethel Hooker+  
Mrs. Martha B. Hopkins  
Ms. Barbara H. Horcha & Mr.  
William Cross+  
Mr. & Mrs. James Howlett  
Mr. & Mrs. Francis Hudson+  
Mr. & Mrs. Fred Huntzicker  
Ms. Kay Iddins+  
Mr. & Mrs. Christopher Iden+Δ  
Ms. Judith I. Ingram & Ms. Maire  
IngramΔ  
Dr. Susumu Inoue\*  
Ms. Elizabeth Ireland-Curtis  
Judith M. & Robert J. Irwin IIΔ  
Dr. & Mrs. John S. Isaac  
Mr. & Mrs. Doug Johnson  
Mr. & Mrs. Earl D. Johnson  
Mr. Al Johnston  
Mr. Derrick F. Jones  
George & Christine Jones+Δ  
Dr. Paul Karr, Sr.  
Mr. & Mrs. G. Donald Kaye+Δ  
Mr. & Mrs. Dennis Keeney\*
- Ms. Linda C. Keller & Mr. Donald J.  
Mosher+  
Mr. & Mrs. W. Matthew Kelley+  
Mr. & Mrs. Christopher S. Kelly,  
Sr.+  
Mr. & Mrs. Daniel Kelly  
Ms. Kitty Kelly+  
Mr. & Mrs. Robert Kilbourn  
Mr. & Mrs. Jimmy King  
Mr. & Mrs. Norman Kleiner  
Ms. Kathryn Kohout+Δ  
Mr. & Mrs. Jim Kolhoff+Δ  
Dr. & Mrs. Prasad Kommareddi+Δ  
Ms. Chene Koppitz+Δ  
James & Barbara Krogsrud+Δ  
Mr. & Mrs. Frederick L. Kump  
Edward & Donna Kurtz  
Ms. Sandra Kusza  
Ms. Carole LaMantia  
Mr. & Mrs. Stephen Larzelere-  
Kellermann+Δ  
Dr. Audrey L. Lattie+Δ  
Ms. Nancy LaVigne\*  
Miss Kerstin Lawrence+  
Mr. & Mrs. Raymond Lee+Δ  
Stephen & Kathleen Leist+  
Mrs. Juldeen Lemke  
Ms. Susanne J. Les & Mr. Tim  
Green\*  
Mr. & Mrs. Carl A. Leser+  
Mr. Paul Levine & Ms. Marion Day  
Mr. & Mrs. Thomas B. Lillie+Δ  
Dr. Sarah Lippert & Mr. David  
Cuthbertson  
Mr. & Mrs. Larry Loje  
Ms. Julia Long & Mr. Gary  
AcklandΔ  
Ms. Denise M. Lucas+Δ  
Mr. & Mrs. Richard Lutgens\*+  
Mr. & Mrs. Clifford Lutz  
Mr. & Mrs. Glenn Lysinger  
Mr. & Mrs. Laurence E.  
MacDonald+  
Mr. & Mrs. John Mair III  
Ms. Doris Malfese
- Mr. & Mrs. Brian Martin  
Ms. Carol Masse  
Mr. Michael Mathieu & Ms. Barbara  
Swartz  
Mr. & Mrs. Lee Maxwell\*+Δ  
Ms. Marilyn Mazanec  
Mr. & Ms. Bernard McAraΔ  
Jack & Pam McCarthy  
Mr. & Mrs. Sean McCormick+  
Mr. & Mrs. James McEwan  
Mr. William J. McKay+Δ  
Mr. & Mrs. Thomas B. McNally  
Dr. & Mrs. Kim P. McPheeters  
Mr. & Mrs. Ted Meadors+  
Mr. & Mrs. Michael Melet+Δ  
George & Kathryn Menoutes  
Mr. & Mrs. Thomas L. Mierta  
Mr. & Mrs. James Migan\*Δ  
Mr. & Mrs. David C. Miller  
Ms. Kareyna Miller\*Δ  
Mrs. Helen G. Millhouse  
Jack & Beverly Mills  
Mr. & Mrs. Robert D. Mills  
Mr. & Mrs. Edward A. Mitchell  
Mr. Thomas Mlynarski & Ms.  
Kathleen Martz+Δ  
Mrs. Doris A. Moellering+  
James R. & Helen Sue Morgan+Δ  
Mr. & Mrs. Don Morris+  
Mr. & Mrs. Guy K. Moxam  
Miss Kathleen E. Muench+  
Mr. & Mrs. Michael Munger  
Ms. Alice R. Murphy  
Mr. & Ms. Peter Murphy+  
Mr. & Mrs. Alexander C. Murray+  
Mr. Patrick Murray & Mr. James  
Edwards  
Mr. & Mrs. Robert W. Myers+Δ  
Mr. Jim Naddeo  
Mr. & Mrs. Walter Nagel+  
Mr. David Nassar & Ms. Kara  
Mannino  
Mr. & Mrs. George Nassif  
Mr. William B. Neis
- Mrs. Jeanette Neu & Mr. Jesse  
BallewΔ  
Mr. & Mrs. David R. Newbill+  
Mr. & Mrs. John Nieman  
Mr. & Mrs. Frank Ninteman  
Mr. & Mrs. Jon Northrup+  
Mrs. Wilaine V. Northway  
Mrs. Patricia Noyle Schoenherr+Δ  
Mr. Thomas O'Brien & Mrs.  
Christine Battiste-O'Brien+Δ  
Ms. Diane M. O'KeefeΔ  
Mr. & Mrs. David Owen-Smith  
Dr. & Mrs. James Owen+Δ  
Mr. Keith A. Palka  
Ms. Carole A. Pappas+  
Dr. & Mrs. Edward Parish+  
Ms. Mary Parks+  
Ms. Lynn Penning+  
Ms. Jeanne Pepper & Mr. Thomas  
Herman+  
Mr. Joseph Perisa+  
Ms. Patti Perkins & Mr. Wayne Say  
Ms. Helen Philpott+Δ  
David & Randee Pieper+Δ  
Mr. & Mrs. Robert Pierce  
Mrs. Janice G. Pike+  
Dr. & Mrs. W. Archibald Piper  
Mr. & Mrs. Lawrence F. Piper  
Mr. & Mrs. Mark Piper  
Mr. & Mrs. Drew Pitts+Δ  
Dr. & Mrs. George D. Politis+Δ  
Mr. & Mrs. Curtis Pollack+  
Mrs. Beverly I. Post+  
Mr. Mort Potter+Δ  
Mr. & Mrs. Robert Pounds  
Mr. & Mrs. James PowellΔ  
Mr. & Mrs. Richard Powell  
Miss Rebecca A. Putnam  
Betty & Richard Ramsdell  
Ms. Ashley V. Randall+  
Ms. Aurora C. Ranese  
Judge & Mrs. Robert M. Ransom+  
Richard & Ramona Ranville  
Ms. Sally L. Reigle+  
Ms. Lisa Reinert
- Dr. Jacquelyn Reinertson+Δ  
Kelly & Lois Revenaugh  
Mr. & Mrs. A. Davison Rice  
Mr. & Mrs. Ken RichterΔ  
Dr. & Mrs. Harvey Ring  
Frank & Linda Roberts+Δ  
Ms. Theodosia Robertson+Δ  
Mr. Wayne Robson  
Mr. & Mrs. Donald Rockwell\*  
Ms. Susan Ross  
Mr. & Mrs. Ralph R. Russell+  
Mrs. Ellajane S. Rundles  
Mr. Ira A. Rutherford\*  
Mr. & Mrs. Roy Sabo+Δ  
Dr. & Mrs. Rabbi Salimi  
Mr. & Mrs. Thomas Salvador  
Mr. & Mrs. Peter Samson  
Mr. Randle Samuels & Ms. Gail  
Offen-Samuels  
Mr. Marshall H. Sanders Jr. &  
Dr. Sharon Simeon+Δ  
Richard & Katherine Saunders  
Mrs. Amina Sayyid  
Mr. & Mrs. Richard Scarlett+Δ  
Dr. & Mrs. Nelson Schafer\*  
Mrs. Miriam S. Schaffer  
The Rev. & Mrs. Dan Scheid\*  
Kenneth & Phyllis Schilling+  
Mr. & Mrs. Derald Schnepf\*  
Mr. & Mrs. Greg Schnesk+  
Mr. & Mrs. Howard S. Schultz+Δ  
Ms. Janet A. Schultz+Δ  
Mr. & Mrs. Mark A. Schwartz+  
Mr. & Mrs. Curtis Seibert  
Mr. & Mrs. Robert L. Shegos  
Ms. Lori Sherman  
Mrs. Beverly J. Shomsky+Δ  
Mr. David Simonds  
Mr. Roosevelt Sims & Ms. Cheryl  
Hislop+  
Mr. & Mrs. Thomas Skunda  
Ms. Lesley Slavitt & Mr. Doug  
Knerr+  
Ms. Sandra K. Smith+  
Ms. Sheila R. Smith+Δ

Kurt & Marjorie Soper  
 Dr. & Mrs. Benjamin M. Sorscher  
 Mr. Dennis Souter\*  
 Mr. & Mrs. Nathan Spencer  
 Ms. Shelley R. Spivack & Mr. Justin Scanlon+  
 Mr. & Mrs. Fred Standridge  
 Ms. Sherri Stephens\*  
 Shirley A. Stevens & Bob Tressedder  
 Miss Barbara Stewart  
 Mr. Paul Stirling+Δ  
 Mr. & Mrs. William R. Stolpin  
 Dr. & Mrs. Michael Suckley  
 Mr. Michael Dingman & Mrs. Susan Sumner Dingman+Δ  
 Ms. Diane Suttles  
 Ms. Roberta Sweetman+Δ  
 Dr. & Mrs. Johannes Tall  
 Ms. Ernelle Taylor+Δ  
 Mr. Gene Taylor  
 Dr. & Mrs. Maxwell F. Taylor II\*+  
 Mr. & Mrs. Carl D. Terwilliger+  
 Mr. & Mrs. Henry C. Thoma, Jr.  
 Mrs. Beverly G. Thompson  
 Ms. Diane Thompson\*+Δ  
 Mrs. Ruth P. Thrash  
 Mr. & Mrs. Glenn Tripp+  
 Mr. & Ms. Earl Turner+Δ  
 Ms. Suzanne Turpen  
 Ms. Donna L. Ullrich\*+Δ  
 Ms. Veronica Van Cleve+  
 Ms. Ann Marie VanDuyne+Δ  
 Mr. & Mrs. Robert J. VanDuyneΔ  
 Mr. Ted Van Steyn & Dr. Emily Feuerherm  
 Carlene & Rob VanVoorhies+Δ  
 Mr. & Mrs. William Vredevoogd  
 Ms. Jane C. Wagner  
 Mr. & Mrs. Dayne Walling  
 Mr. & Mrs. Michael Walsh\*  
 Mr. & Mrs. David B. Walters  
 Mr. Harry Walters  
 Mr. Mark A. Walters\*+Δ  
 Ms. Carolyn Warren  
 Mr. & Mrs. Jim Wascha+

Mr. Andrew Watchorn+Δ  
 Ms. Christine Waters & Mr. Martin Anderson\*  
 Mr. & Mrs. Lynn E. Webb+Δ  
 Mr. & Mrs. Larry Weber\*+Δ  
 Dr. & Mrs. Robert M. Weber  
 Mr. & Mrs. Richard C. Weiermiller  
 Dr. & Mrs. Stuart B. Weiner  
 Mr. James Weisberg  
 Mrs. Mary E. Whaley & Mr. Rick Kroeger  
 Dr. & Mrs. Charles V. White+Δ  
 Mr. & Mrs. Tom Wickham  
 Dr. & Mrs. James Williams+  
 Mr. & Mrs. Mike Wilson+Δ  
 Ms. Ruth Winter & Mr. Tom Thibault  
 Dr. Sue Wisenberg & Ms. Donna Baker\*Δ  
 Mr. & Mrs. David Withey\*+  
 Jerome & Judith Wolbert  
 Mr. & Mrs. Robert A. WoodΔ  
 Mr. & Mrs. Ron Wurst\*  
 Mrs. Flora Yearta\*Δ  
 Ms. Catherine Yeotis+  
 Judge & Mrs. Thomas C. Yeotis+Δ  
 Mr. & Mrs. Dennis W. Younger  
 Mr. & Mrs. Marvin Zmudzynski  
 Mr. Paul Zoltowski  
 Dr. Kerry Zubke\*  
 Mr. Stephen Zulinski\*+Δ

**Family**  
*(\$50 annually)*  
 Ms. Barbie Torrey & Mr. Douglas Abbott  
 Ms. Velma Adams  
 Mr. & Mrs. Robert Aguirre\*  
 Miss Linna Aikins  
 Mrs. Kimberley J. Alexander  
 Mr. & Mrs. Ricardo AlfaroΔ  
 Mr. & Mrs. Fred Allen  
 Mr. & Mrs. Kevin Allen+  
 Ms. Valarie Allen  
 Dr. Jami Anderson & Family  
 Ms. Wilma Anderson

Mr. & Mrs. Herman Anthony & Family  
 Mr. Anthony J. Artis  
 Mrs. Angela Ascencio-Mindlin  
 Dena & Dennis Ashworth  
 Mr. & Mrs. John Augustine  
 Ms. Karen E. Bailey  
 Mrs. Julie M. Bakeman  
 Mr. & Mrs. Calvin Baker\*  
 Teresa & Mark Barnett  
 Mrs. Linnea Bassin & Mr. Matt Bassin  
 Mrs. Ellen Bates  
 Mrs. Patricia Beauvais  
 Ms. Celestia Bell  
 Mrs. Debbie Benjamin  
 Mr. & Mrs. Bob Bennett\*+Δ  
 Ms. Stacie Bielec  
 Mr. & Mrs. Russell D. Bissinger  
 Dr. & Mrs. Paul Blanchard  
 Mr. & Mrs. Michael Blondin  
 Mr. & Mrs. James Blum & Family  
 Becky Boegner & Jo-K Boegner  
 Mrs. Joyce E. Bolo  
 Mr. & Mrs. Dean Bonesteel  
 Mr. & Mrs. Bob BooherΔ  
 Miss Jessica Bostian  
 Ms. Jan Bourcier\*  
 Mr. & Mrs. Todd Bowman & Family  
 Mr. & Mrs. Kevin Bowman  
 Ms. Betsy Boyd\*+  
 Mr. & Mrs. David S. Boze & Molly  
 Ms. Aretha Bradley  
 Mr. & Mrs. Edwin Bradley  
 Mr. & Mrs. Scott J. Breslin  
 Mrs. Jeanene Brewer  
 Mr. & Mrs. John C. Briggs+  
 Mr. & Mrs. Kelly J. Brisbin  
 Mrs. Amy Britz  
 Mr. & Mrs. Thomas Brown  
 Mr. & Mrs. Robert Brown+  
 Mrs. Carolee Buckey  
 Mrs. Anne Buckman  
 Mr. Rob Bueche  
 Mr. & Mrs. Michael Burel

Mrs. Rosemary Burgess  
 Mrs. Cynthia Burget  
 Mr. & Mrs. Michael Burkhardt  
 Mrs. Shelli Burkhardt  
 Mr. & Mrs. Daniel Cady+  
 Mrs. Kate Cain  
 Mr. & Mrs. Nick A. Calandro, Jr.\*  
 Mr. & Mrs. Don Calix  
 Mrs. Theresa Callard-Moore  
 Mr. Matthew Campbell  
 Ms. Brennis Carnes Ferguson  
 Mr. Christopher Carr  
 Mrs. Kecia Carter  
 Ms. Sally Case  
 Mr. Terry Castor  
 Ms. Beth Casucci & Mr. Lance Glazier  
 Mr. & Mrs. Joseph Cecchini  
 Mr. & Mrs. James Cheek  
 Mrs. Karen Jean Christian  
 Ms. Cheryl Churchill  
 Mr. & Mrs. Charles Clarke  
 Mr. & Mrs. Brian Clegg  
 Dr. James Cohen & Ms. Caroline Kellogg  
 Mr. & Mrs. Bruce T. Colasanti\*  
 Ms. Kimberly Cole+Δ  
 Ms. Tamalii Collins  
 Mr. & Mrs. Joseph Combi  
 Ms. Andrea Consiglio  
 Ms. Michelle Cooper  
 Mr. Joseph Coriaty  
 Mr. & Mrs. Mark Corrigan\*+  
 Mr. David Courter & Family  
 Dr. & Mrs. Clifford J. Cox II  
 Mr. & Mrs. Bob Crang  
 Mrs. Mary J. Crawford  
 Ms. Mattie Crockett  
 Mr. & Mrs. Fred Cross+  
 Mr. & Mrs. Joe Curtis  
 Mr. & Mrs. Harry Cybulski  
 Ms. Susan A. Damone  
 Mr. Scott Darragh & Ms. Kendel Reimann Darragh+Δ  
 Mrs. Frances Dashe

Mr. & Mrs. Peter Daunt  
 Mrs. Veronica Davenport+  
 Mr. Wm. Stefan Davidek  
 Mr. Scott Davis  
 Mr. & Mrs. Lawrence Day  
 Ms. Alison Dedrick  
 Ms. Yvette DeGroat  
 Mr. & Mrs. John DeLapp  
 Ms. Sheila Denny-Fong  
 Mr. & Mrs. Russ Deutsch  
 Mr. Marvin Diem  
 Mrs. Elizabeth Dix+  
 Ms. Jeanne Dodd & Mr. Robert Streadwick  
 Mr. & Mrs. Daniel Dowling  
 Mr. & Mrs. Steven Drews+  
 Ms. Christina Krupa  
 Ms. Karen Duncel  
 Mrs. Krista Durham  
 David & Jill Esau  
 Ms. Elizabeth Eby & Mr. Douglas Tobias  
 Mrs. Erica Edgington  
 Carol Egloff+Δ  
 Ms. Wanda Eichler  
 Dr. & Mrs. Kevin Eikay & Family  
 Murray & Sharon Eisen\*+Δ  
 Ms. Tobi English  
 Mr. Donovan Entrekkin  
 Mr. Jim Erwin & Ms. Diane Root  
 Mr. Michael Espy & Dr. Mary Espy  
 Mr. Robert Evans & Mrs. Diane Donley  
 Ms. Vishaun Ezell  
 Ms. Rita Fagan  
 Mr. & Mrs. Jim Farber  
 Mr. & Mrs. Mark Farella\*  
 Mr. & Mrs. Robert Florine\*  
 Ms. Pam Folts & Ms. Lisa Land  
 Mr. & Mrs. Michael B. Foote  
 Mr. Richard W. Fortner+Δ  
 Mr. & Mrs. Dennis Freeman  
 Mrs. Teresa Frelix  
 Ms. Lindsay Garrison  
 Mrs. Laura Garrison

Mr. James Gaskin & Ms. Regina Schreck	Ms. Ann Howard	Ms. Natalia LaFuente	Mr. & Mrs. Steve McQueen	Mr. Allen Parker & Mrs. Natashi Hudson-Parker
Mr. & Mrs. James Gaver+	Mrs. C Hudson	Mrs. Lisa M. Lamb+	Mrs. Jennifer McVannel	Mr. & Mrs. Lee Parks*
Ms. Mary Jo Gifford	Bridget & George Hughes*	Ms. Deborah Lambert	Mr. & Mrs. Marty Meissner	Mr. & Mrs. Paul Parsons
Mr. & Mrs. Roger Gilmour+	Mr. & Mrs. Josh Hurand	Mr. & Mrs. James Lane	Ms. Jean Merkle	Dr. Ben Pauli & Ms. Vivian Kao+
Mr. & Mrs. Jonathan Glab+Δ	Ms. Sara Hurand & Mr. Elie Weiss	Mr. & Mrs. Steve Lanphear	Mrs. Linda Merlo	Mr. Matthew Payne & Mrs. Patricia Payne
Ms. Megan Goedge	Mrs. Marilyn Hurwitz*	Ms. Monica LaRiviere	Mr. & Mrs. Mark Miller	Mr. & Mrs. Gary B. Penn+
Douglas & Susan Goering	Mr. & Mrs. Robert E. Iden	Mr. & Mrs. Gary Latimore+	Mr. & Mrs. Marlon Miller	Ms. Marva Perkins
Ms. Ronda W. Goldfarb	Mrs. Michele Igram	Mr. & Mrs. David Lattie*	Mr. & Mrs. Stephen Miller & Ms. Jeana Rossie-Miller	Ms. Sandra Perkins
Mr. David Gomon & Ms. Elizabeth Gomon+	Mr. & Mrs. Andrew Isola+Δ	Mrs. Valarie Lee	Mr. Jeff Mills+Δ	Mr. & Mrs. Jeremy Perrault
Ms. Pamela Goodwin*	Mr. Joshua Jackson & Ms. Margaret Denner	Ms. Shermaine Lee & Mr. Curtis Lee	Ms. Almeta Milow	Mrs. Daniell Perroud
Mr. & Mrs. Jeff Gould	Ms. Heather Jackson*	Miss Emily Legleitner*	Mr. Alfred Mirakovits & Ms. Cynthia Zack*+	Mr. & Mrs. Vincent PfaffΔ
Mr. & Mrs. Michael Goulet	Mr. & Mrs. Philip Jackson*+Δ	Dr. & Mrs. Alexey Levashkevich	Mr. Ramon Molina	Mrs. Pam Pfeiffer
Mr. & Mrs. Garald Goza	Dr. Ernestine Jackson	Ms. Cyndi Lieske+	Mr. & Mrs. Andrew Molnar*	Mr. & Mrs. Gary Philpott+Δ
Mr. Jan S. Graham	Mrs. Toni James	Mr. Allen Lindke	Mr. & Mrs. Robert Monroe & Family	Mr. Wayne Pickvet & Mr. Bruce A. Barrett
Mr. & Mrs. Gordon Grandy+	Mrs. Anna Johnson	Mr. & Mrs. Handy Lindsey	Mrs. Jeanne Montroy	Mrs. Kimberly Plouffe
Mrs. Susana Green	Mr. & Mrs. Ben Johnson	Mrs. Kathleen Lisk	Mr. & Mrs. Steward A. Moore+Δ	Dr. & Mrs. Ariel Ponce
Mr. & Mrs. Kent Greenfelder	Ms. Jimmye Johnson	Dr. & Mrs. Edward T. Lock	Mr. Matthew Morgan & Ms. Tricia Bicego	Mr. & Mrs. John Popovits+
Ms. Cinda Guilbault & Ms. Aubrey Guilbault	Ms. Trishanda Johnson	Mr. & Mrs. John Loeding	Ms. Pamela Morgan	Mr. Timothy Potter & Mr. Daniel Howe
Ms. Michelle Haack & Mr. Jared Haack	Ms. Joelle Jordan	Mrs. Suzanne Lossing	John & Pat Mucha	Mr. & Mrs. Mark D. Prevett
Mr. & Mrs. Lawrence Hackett	Ms. Anita Joshua	Ms. Lynn Louchart- Keifer	Mr. & Mrs. David Mulligan	Mrs. Inga Rabinkov
Mrs. Susan Hagen	Mr. & Mrs. Franklin H. Kasle	Bob & Tiffany Lovett	Mrs. Linda MurphyΔ	Dr. Paul J. Racine
Mr. & Mrs. Tony Hain*	Aaron & Emily Kelley+Δ	Mrs. Judy Ann Lowrie	Mr. & Mrs. Rick Murphy	Mr. & Mrs. Richard Reed
Mr. Toby Hall & Ms. Vivian Heidtman	Mr. & Mrs. Craig Kelley, Sr.	Mr. & Mrs. Jason Ludens	Ms. Sandra L. Murphy	Mrs. Maggie Reeser-Wright
Mrs. Janet Hamilton	Mrs. Tina Kennamer	Ms. Claudia Ludvigsen	Mr. & Mrs. Christopher MusicΔ	Mr. & Mrs. Michael Regiec
Ms. Jen Hanson	Mr. A.P. Kennedy	Mrs. Joellen Ludwig	Ms. Jennifer Myers	Mr. Adam Reigle
Ms. Janice T. HardenΔ	Mr. & Mrs. Michael Kent	Mr. Alan Lynch	Mr. Rick Myers & Dr. Elizabeth A. Rose & Family	Mr. & Mrs. Brian Renaud
Mr. Kyle Harmer	Ms. Judy Kerspilo	Miss Anne MacDonald	Ms. Heather Nassar	Mr. & Mrs. Josh Richard
Samuel & Graciela Harris	Ms. Donielle Keyes	Fr. Steve MakranyiΔ	Mrs. Stephanie Natzke	Mr. & Mrs. Gary Richards & Family
Mr. James L. Harrow*+	Mrs. Jami Kilduff	Mrs. Susan Marr	Mr. & Mrs. Charles D. Nielsen+	Mr. & Mrs. Bruce Richardson
Mrs. James Hastings	Mr. & Mrs. Russell Kirksey	Mr. & Mrs. Rob Martin	Mr. & Mrs. Jonathan Nigrine & Family	Mr. John L. Riegler, Jr.*
Ms. Linda Hecker	Mr. & Mrs. Walter Knoblock*Δ	Mr. Michael Martin & Mr. Bryan Paris	Mr. & Mrs. Richard C. Noble	Mr. & Mrs. Stephen Riselay
Ms. Melanie Hemphill	Mr. & Mrs. Robert Koch	Mr. & Mrs. Mark MastersΔ	Dr. & Mrs. David A. Noffert	Mrs. Vanessa Robar
Mr. & Mrs. Carlos Hernandez	Mr. & Mrs. Wes Kohn*	Ms. Debbie Maxwell	Mr. & Mrs. Ed O'Mara	Mr. & Mrs. Nicholas Robinson
Dawn Hibbard, Ray Rust & Family+	Mr. & Mrs. Rudolph N. Kohn	Mr. & Mrs. Judd McCullough	Mr. Theodore Oldham	Ms. Suzanne Rock & Mr. James Uicker
Dr. & Mrs. Huseyin R. Hiziroglu+Δ	Mr. David Korhonen	Mr. & Mrs. Peter McCreedy+	Rev. Claudene Oliva & Ms. Karen Genter*	Mr. & Mrs. Robert Romanowski+
Mr. & Mrs. Richard C. Hockstad	Ms. Rita Kotzian & Ms. Clarissa Kotzian	Mr. & Mrs. Larry McDonough+	Mr. Sean Orzol & Dr. Shawn Reiser & Jacob Orzol	Mrs. Jeannine Romer
Mrs. Rebekah Hoelt	Mr. & Mrs. Michael Kratchman	Ms. Gwyn B. McKay	Mr. & Mrs. Peter Ott	Ms. Susan Ross
Ms. Nadie B. Holmes	Mr. Kenneth C. Kreger & Mr. Timothy M. Morgan+	Mr. Raymond A. McKee & Ms. Shirley Eason	Mr. & Mrs. David L. Panzlau*	Ms. Suzanne Rosser
Mr. & Mrs. James Hotary+	Mr. & Mrs. Tim Kroll & Family	Mr. & Mrs. Charles R. McKone		Mr. Thomas Rourke
Mr. & Mrs. Robert Houbeck	Ms. Vicki Kuhn & Mrs. Florence Vorce	Ms. Caroline McClellan & Family		
	Mr. Thomas Lafferty	Mrs. Jane McMillan		
		Ms. Connie Lynne McNeal		



- Ms. Cary Rouse & Mr. Charles Allison  
 Mr. & Mrs. Paul Rozycki+Δ  
 Mr. & Mrs. Richard J. Ruhala\*Δ  
 Mr. Patrick Savage & Mrs. Lori Nelson SavageΔ  
 Mr. & Mrs. Frank A. Sanders  
 Ms. Sherren Sandy  
 Mrs. Sarah Santini  
 Ms. Kathy Saunders & Ms. Sandra Hodges  
 Mrs. Maureen E. Schlott & Family\*  
 Mrs. Arlene A. Schmitzer+  
 Ms. Jean A. Schneider  
 Ms. Tina Scott  
 Mr. & Mrs. Leo Seide+  
 Mrs. Barbara Shackelford  
 Mrs. Michelle Shamel  
 Mrs. Rebecca Shankster  
 Ms. Martha Shaver  
 Mr. & Mrs. Jason Shellhaas  
 Mr. & Mrs. Dan Shevnock  
 Mrs. Heather Shurter  
 Mr. Scott Siefker  
 Ms. Linda Simmons & Ms. Jordyn Thomas  
 Ms. Bridget Sims  
 Mrs. Theresa Skene  
 Dr. Inez J. SlaubaughΔ  
 Mrs. Tamara Smeltzer  
 Mr. & Mrs. Daniel Smith+  
 Ms. Cheryl Smith\*  
 Mrs. Germaine D. Smith  
 Mr. & Mrs. Worley Smith+  
 Mr. Raymond Solack\*  
 The Solo Family  
 Mrs. Amy Sparks  
 Mrs. Marcy Speaks  
 Dr. & Mrs. Morton Stanley+  
 Mr. & Mrs. Chris Stefanski  
 Mr. & Mrs. Ernest Steward  
 Mr. & Mrs. Ronald C. Stewart  
 Mr. & Mrs. Norm Stewart\*  
 Mrs. Amy Stimac  
 Mr. & Mrs. Strater
- Mr. & Mrs. Paul G. Streby+  
 Mr. Eric Strommer  
 Mrs. Jean Sutherland  
 Mr. Damon Swanson  
 Mr. & Mrs. Douglas C. Swanson  
 Dr. Michael Szappan & Mr. James Maxwell\*  
 Ms. Belinda Tate  
 Mr. & Mrs. David Taylor  
 Mr. & Mrs. Richard Tesner  
 Ms. Kimberly Thames  
 Ms. Sandra Thames  
 Mr. & Mrs. F. William Thewalt  
 Dr. Charles Thomas  
 Mrs. Krystle Thorn  
 Ms. Nickolena Topping  
 Mrs. Patricia Topping  
 Ms. Edna Torreano  
 Ms. Roshanda Townsend  
 Ms. Anh Tran  
 Mr. & Mrs. Bruce Trevithick+Δ  
 Ms. Rachel Turner  
 Miss Kimberly Turner  
 Ms. Rachel Turner  
 Mrs. Shelly Umphrey  
 Mrs. Amie Urbanke  
 Mr. & Mrs. Matt Urbanke  
 Mr. & Mrs. Michael Vernon  
 Mr. & Mrs. Douglas Walker\*  
 Mr. & Mrs. William Walker  
 Mrs. Charity Walsh  
 Mr. & Mrs. Clair Ward  
 Mrs. Pam Warden  
 Ms. LaSahunda Warren  
 Mr. & Mrs. Dennis Warriner  
 Mr. Jimmy Water  
 Mr. & Mrs. Chris Waxweiler  
 Ms. Susan M. Wedda & Ms. Carol J. Ferguson+  
 Mr. & Mrs. Jeff Wedding  
 Mr. Dale K. Weighill  
 Mrs. Alisha Wells & Family  
 Mr. & Mrs. Bob Wiesen  
 Mr. & Mrs. Octavio Williams  
 Mrs. Beverly A. Willing
- Mr. & Mrs. Glenn Wilson  
 Mrs. Elizabeth Wise\*  
 Ms. Kala Wood  
 Mr. & Mrs. Daniel Wozniak\*+  
 Mrs. Amber Wright  
 Ms. Doris M. Wright & Family\*  
 Dr. Matt Wyneken & Dr. Krista Hansen+  
 Mr. & Mrs. Butch Yerian  
 Mr. Andrew Younger & Mrs. Elena Moeller Younger  
 Mrs. Luz Ytterock  
 Mrs. Amy Zagata
- Dual**  
 (\$40 annually)  
 Mr. & Mrs. T.C. Alarie  
 Ms. Patricia Alexander+  
 Ms. Marilyn M. AlveyΔ  
 Mrs. Sarah Andresen & Ms. Catherine Andresen+  
 Mr. Eric Andreychuk  
 Mrs. Jeneil M Applegate\*+Δ  
 Dr. & Mrs. Danny Aronovitz  
 Mr. & Mrs. Robert Aurand  
 Mr. John Bach & Ms. Mary Alice O'Malley+  
 Ms. Sarah Bajek & Mr. Khris Perry  
 Ms. Jasmin Baker  
 Mr. & Mrs. John Baker  
 Mr. & Mrs. Donald W. BallentineΔ  
 Mr. & Mrs. Terry Bankert+Δ  
 Mr. Brynne Banks & Ms. Veronica Presnall\*  
 Mr. Richard Barber & Ms. Sharon Baker  
 Mr. Wayne Barber & Mr. Rich Fitz Gary & Maureen Bates+  
 Mr. & Mrs. A. David Baumhart IIIΔ  
 Dr. & Mrs. Henry Beckmeyer+  
 Mr. & Mrs. Donald L. Bell  
 Dr. & Mrs. Tom & Linda Belford+Δ  
 Ms. Dawn M. BentleyΔ  
 Mr. & Mrs. James Bentoski  
 Ms. Carol Berger & Ms. Renee Smalley
- Ms. Andrea Bergstrom  
 Mr. & Mrs. Martin Bernstein  
 Dr. & Mrs. Sultan M. Bhimani  
 Mr. & Mrs. Aaron S. Bivins  
 Ms. Linda Bjaland\*+  
 Mr. & Mrs. Richard Blakeley  
 Ms. Renee Boals-Peel  
 Mr. & Mrs. Thom Bohnert+  
 Mr. & Mrs. John Boone+  
 Mr. & Mrs. Rickey Booth  
 Mr. & Mrs. Al Bosley  
 Ms. Michelle A. Bowman & Ms. Helen Reed\*  
 Mr. & Mrs. David Boyd  
 Mr. & Mrs. John A. Brancheau  
 Mr. & Mrs. Carl Brown+  
 Dr. Loretta Brown & Mr. Robert Brown  
 Mr. & Mrs. Stanley Brown  
 Ms. Luan Brownlee & Mr. Allen O'Dell  
 Mr. & Mrs. Nate Bruce+  
 Ms. Pat Buerkel & Ms. Tammy Williams+Δ  
 Mr. & Mrs. Samuel Burdick  
 Mr. & Mrs. Lary Burk  
 Mr. & Mrs. Michael Burkley+  
 Ms. Jennifer Burnett & Mr. Sean Siebigteroth+  
 Mr. & Mrs. Weston Bye  
 Mr. & Mrs. Richard J. Caloia  
 Ms. Marcie Cardinal & Mr. Johnny Hare  
 Ms. Holly Carlton  
 Mrs. Diana Carr  
 Mrs. JoeAnn B. Carrigan  
 Mr. Wade Carver & Ms. Heather Meier+  
 Mr. & Mrs. Tom Cheek+  
 Mr. James R. Chintyan+Δ  
 Mrs. Patricia A. Chipman\*+  
 Ms. Abigail I. Chou+Δ  
 Mr. & Mrs. John M. Christena+Δ  
 Mr. & Mrs. Phil Christensen  
 Mr. & Mrs. David Coburn+
- Ms. Raely Coffey & Ms. Angella Thompson  
 Rob & Kathy Cojeen+  
 Mr. Gary Conway  
 Virgil & Sheryl Cope  
 Mr. & Mrs. Gary Cox  
 Mr. & Mrs. William Cox+Δ  
 Mr. & Mrs. Gordon Crandell  
 Mr. Nate Boggs & Mrs. Ann M. Crouter-Boggs\*  
 Dr. & Mrs. Ronald Crow  
 Mr. & Mrs. Christopher Cunningham  
 Mr. Robert L. Daly+  
 Mr. & Mrs. George Davidson  
 Lorretta Davis & Harold Ford  
 Mr. & Mrs. Skip Davis  
 Mr. & Mrs. Stu DavisΔ  
 Mr. & Mrs. Lou DeCillis+  
 Mr. & Mrs. Marc DeCubber+  
 Mr. Larry L. Deitering\*  
 Ms. Claudia DeMonte & Mr. Ed McGowin  
 Mr. & Mrs. John Dewit+  
 Ms. Laurie Dexter & Ms. Patricia WilsonΔ  
 Ms. Crystal Dillard  
 Mr. & Mrs. Bruce Dobras  
 Mr. & Mrs. John Dumas+  
 Mr. Dennis Dunlavy  
 Ms. Sarah Dunne & Mr. Patrick Mullane  
 Mrs. Brenda Eisele  
 Mr. & Mrs. Larry Elliott  
 Mrs. Holly Elrod  
 Mr. & Mrs. Travis Emmons+Δ  
 Mr. & Mrs. Joseph A. Eufinger  
 Kerry & Robin Evans+  
 Mrs. Sue A. Faley\*  
 Dr. Theodore Fellenbaum  
 Mr. & Mrs. Dane Farner+Δ  
 Mr. & Mrs. Jack Feuerstein+Δ  
 Mr. & Mrs. Daniel Fiedor+  
 Mr. & Mrs. Phil Flanigan  
 Mr. & Mrs. James P. Ford

Mr. & Mrs. George Francis  
 Mr. & Mrs. Les Frazee  
 Ms. Polly Gaitskill  
 Mrs. Jenny Gallo  
 Mr. & Mrs. Gary Gebhardt  
 Mr. & Mrs. John Gembinski  
 Mr. & Mrs. Jay Goldstein+  
 Ms. Collette Golec & Ms. Kathleen Konesny\*  
 Mr. David Gomon & Ms. Elizabeth Gomon+  
 Mr. & Mrs. Johannes Gorke  
 Mr. & Mrs. Dominic Goyette  
 Mrs. Elaine M. Graves  
 Mr. & Mrs. Mark Guith  
 Mr. & Mrs. Timothy Gundlach+  
 Ms. Deb Gustafson & Ms. Sue Weston+  
 Mr. & Mrs. Dennis Hale  
 Mr. Fred Hall & Ms. Mary Boyer+  
 Dr. & Mrs. Franklin W. HamiltonΔ  
 Mr. & Mrs. John Haner  
 Mark & Rebecca Hanner  
 Mr. & Mrs. Donald E. Harbin  
 David & Donna Hart+  
 Mr. & Mrs. Ronald M. Horton+Δ  
 Mrs. Linda Harwood\*  
 Mr. & Mrs. Mike Hefner  
 Mr. & Mrs. Edward G. Henneke+  
 Mr. & Mrs. Robert Henshaw  
 Dr. James R. Hillard  
 Mrs. Mary Jo Hobart-Parks  
 Mr. & Mrs. Gurdon Hobson  
 Ms. Sandra Holloway & Miss Lauren Holloway\*  
 Mr. & Mrs. Greg Hoover\*  
 Mrs. Joan M. Horcha & Mr. Jerry J. Haddad  
 Dr. Lani Hoshaw & Mr. Carlos Bermudez  
 Ms. Shayna Hosler & Mr. James Mason  
 Mr. Jeff House & Mr. Jonathan Shettler  
 Mr. Brian Howell

Ms. Rhetta Hunyady  
 Ms. Mary Kay Hurren  
 Ms. Gail Hurst & Ms. Ruth Hurst  
 Mr. & Mrs. Mitchell Jarosz+  
 Mr. Kristopher Johns & Ms. Vanessa Ferguson\*+  
 Mr. Kenneth Johnson & Mrs. Sheila Kelly  
 Mr. & Mrs. Zelton Johnson  
 Dr. David M. Johnston+  
 Ms. Samantha Johnston\*+  
 Mr. & Mrs. Myrton N. Jones  
 Mr. & Mrs. Fred Junger  
 Ms. Tasia Kalemis\*  
 Ms. Elizabeth A. Kaplan  
 Mr. & Mrs. William A. Karas II  
 Ms. Nancy Kehoe+  
 Mr. James Kelly & Mrs. Mary Kay Thompson-Kelly  
 Dr. & Mrs. Jay Kennedy  
 Mr. & Mrs. Dennis Kingsley  
 Mr. & Mrs. Melvin Kipp  
 Ms. Melissa Kitzman  
 Mrs. Camille Koger-McCree & Mr. Kyle McCree  
 Mr. & Mrs. Michael Koviack  
 Mr. Jake Kranz & Ms. Angi Ostrom Kranz  
 Mr. Ron Krueger, Jr.\*  
 Mr. & Mrs. Thomas Kudza  
 Mr. & Mrs. Gary Kuiper  
 Mr. & Mrs. Madhu Kulkarni  
 Mr. & Mrs. James Kummer  
 Ms. Yasmin Ladha & Ms. Liz Kish+  
 Ms. Alyssa LaFave  
 Mr. & Mrs. Shannon Langley  
 Mr. & Mrs. Michael Larson  
 Mr. & Mrs. Mike Laux+  
 Mr. & Mrs. Lee LaVictoire+  
 Mr. & Mrs. Gordon Lawson  
 Mr. & Mrs. Rick Legleitner\*  
 Mrs. Joan LePard  
 Ms. Rebecca Letterman & Ms. Sarah Letterman  
 Mr. & Mrs. Solomon Lewis

Mr. & Mrs. Kenneth Lindebrekke  
 Mr. David T. Lindsey & Mrs. Jeanette Lindsey+  
 Dr. Sarah Lippert & Mr. David Cuthbertson+Δ  
 Mr. & Mrs. Chris Locking  
 Mr. & Mrs. James A. Loviscek  
 Mr. & Mrs. Steven Low+Δ  
 Mr. & Mrs. Jason Lurvey  
 Mr. & Mrs. Rick Lutz+Δ  
 Rev. Zachary Mabee  
 Ms. Nancy MacDonald  
 Claudia & Richard Mach+  
 Mr. & Mrs. Keith Magnuson  
 Ms. Katherine Maitland & Mr. Barry McGhan  
 Ms. Sandy Malnar+  
 Mr. & Mrs. Gerry Mann\*  
 Mr. & Mrs. Andrew Markell  
 Mr. & Mrs. Charles Marshall+  
 Ms. Susan Martin & Mr. Dan McClain  
 Mr. & Mrs. Charles Martin+  
 Mr. George Marzonie  
 Mr. Mark Mayberry & Ms. Debbie Campbell  
 Ms. Pamela McBride  
 Ms. Demetria McClelland  
 Mr. & Mrs. Keith McCombs\*+Δ  
 Mr. William K. McDonald\*+  
 Mr. & Mrs. James McDougal  
 Dr. & Mrs. Jack McLaugh+Δ  
 Ms. TinaMarie McGinnis  
 Mr. & Mrs. Peter McKenna  
 Mr. Richard McNally+  
 Mr. & Mrs. Neil McPhee  
 Dr. Andreas Mebert & Dr. Laura Mebert  
 Mr. & Mrs. Ed Meier+  
 Ms. Shelly R. Meisel\*  
 Ms. Pennie A. Meyers+  
 Mr. & Mrs. Jim Mikuska  
 Mr. & Mrs. Kenneth Milito  
 Mr. Charles Miller & Dr. Townes Miller

Ms. Shelley Miller & Mr. Joel HoffmanΔ  
 Mr. & Mrs. Paul Mooradian  
 Mr. & Mrs. Allan Moore  
 Hon. & Mrs. Eugene A. Moore  
 Dr. & Mrs. Stephen Morris  
 Mr. John J. Mrozik & Ms. Heather Sisto  
 Ms. Anne Naber+  
 Mr. & Mrs. Kurt Neiswender+  
 Mr. & Mrs. Ken Nemitz  
 Dr. & Mrs. Jack Nettleton+  
 Mr. & Ms. Tom Neuhard  
 Ms. Marna Newman  
 Mr. Mike O'Dea & Ms. Cindy O'Dea  
 Mrs. Nancy Odett  
 Ms. Jacquie Osborn & Mr. Jim Osborn  
 Mr. & Mrs. Ronald Oskey  
 Ms. Connie Parker  
 Mr. & Mrs. Edward Parker  
 Mr. & Mrs. Tim ParrottΔ  
 Mr. & Mrs. Bernie Paul  
 Mr. & Mrs. James Pendelton  
 Mr. Glenn Petersen & Ms. Susan Lubanski  
 Mr. & Mrs. Carl Peterson  
 Mr. & Mrs. Roger L. Peterson  
 Mr. & Mrs. Tom Peterson+  
 Mr. Douglas Petroni & Ms. Rosalie Buss-Petroni+  
 Ms. Connie Pfeiffer  
 Mr. & Mrs. John Pflanzner  
 Mr. & Mrs. Michael Phillips  
 Ms. Jacqueline Piechowski  
 Mr. & Mrs. Thomas G. Pierson  
 Mr. & Mrs. Gerald Pinkos  
 Ms. Debra Piper+  
 Mr. & Mrs. James Polehna+  
 Mr. Brian Polisky & Ms. Leslie Trout  
 Ms. Karen Prater\*  
 Mr. & Mrs. Edward J. Preville+Δ  
 Ms. Frances J. Price  
 Mr. & Mrs. Robert J. Pries

Mr. Thomas Pugsley & Ms. Susan Sage  
 JoEtta Pyles-Zalewski\*  
 Mr. & Mrs. Martin Pylvainen  
 Dr. Vino Raj  
 Mr. & Mrs. Robert W. Ranta+  
 Ms. Ann Rasmussen & Ms. Wilma Tremblay  
 Mr. & Mrs. Tony Ray+  
 Dr. & Mrs. N. N. ReddyΔ  
 Mr. Collin Regimbal &  
 Mr. & Mrs. Melvyn R. Rettenmund  
 Mr. & Mrs. Dale Rice  
 Mr. & Mrs. Daniel Richards  
 Mr. & Mrs. Douglas Ricketts  
 Mr. John L. Riegle, Jr.  
 Mr. Chris Ringle  
 Mr. Alfred Arnold & Mrs. Dolores M. Roat-Arnold  
 Dr. & Mrs. Paul Roetter+  
 Mr. & Mrs. Richard Rogers  
 Dr. Charles Rollison  
 Ms. Gina Romanowski  
 Mr. & Mrs. Barry Rosen  
 Ms. Sally Ross  
 Mr. & Mrs. Brian Royce+  
 Dr. & Mrs. Joshua Sauvie  
 Ms. Linda M. Savage & Mr. Michael P. Sherry  
 Ms. Mary Scheuer & Miss Claudia Scheuer  
 Mr. & Mrs. Edwin Schreiber  
 Carl & Kim Schumaker  
 Ms. Marsha V. Schwarz\*+Δ  
 Mr. Randall Scott & Mrs. Elizabeth Jones  
 Dr. & Mrs. David Sergy  
 Ms. Kathleen A. Sheehy  
 Dr. Richard & Rose Marie ShickΔ  
 Ms. Christa M. Siegel  
 Mr. & Mrs. David J. Simoni  
 Mr. & Mrs. Carl Slemp  
 Mr. & Mrs. Michael Slogor\*  
 Dr. Ernestine R. Smith\*  
 Mr. & Mrs. Ivan Smith

Ms. Jeanine Smith & Cullen Roberson*	<b>Individual</b> <i>(\$30 annually)</i>	Mrs. Carole A. Brender+Δ	Ms. Gail M. Curry	Ms. Melissa Fitch
Mr. & Mrs. Len Sokol	Ms. Leslie Acevedo	Mr. Leo Brennan	Mr. Robert H. Curtis	Ms. Judith Fletcher
Mr. Thomas Springer*+	Ms. Denise Ahonen	Ms. Galina Britton+	Mr. Edwin D. Custer	Ms. Andrea Zlatec Floden+Δ
Mrs. Dawn Stableford	Mrs. Laura Alderman	Ms. Ellen Brothers	Ms. Diana Cypret	Ms. Sally Lee Foley
Mrs. Betsy Stevens*+	Mrs. Michelle Alexander	Mrs. Bonnie Brown	Ms. Jackie Dale+	Dr. Colleen Ford
Mr. & Mrs. Edward StrongΔ	Ms. Judith Alexander+	Mrs. Kimberly Brown+Δ	Mr. Gary DeButts+	Ms. Julie Ford
Ms. & Ms. Lynda Suci+	Ms. Margaret Allen	Ms. Mary Brown	Mrs. Elaine DeCou	Ms. Amy Fugate
Dr. & Mrs. John Sullivan+	Mrs. Dolores R. Allen+	Mrs. Linda L. Brown	Mr. David Degrandchamp	Mr. William D. FullerΔ
Mr. William V. Abendschien & Mrs. Mary Ann Sullivan-Abendschein+	Ms. Margaret Allen	Ms. Peggy Brunner+	Ms. Betty L. Dell	Ms. Joyce M. Gadola+
Amy & Wes Sutkowi	Mrs. Sue Allen	Ms. Joy Bublitz+	Mrs. Beverly J. Dillon	Ms. Virginia Gaffney+
Mr. Ken Swisher	Ms. Anna Allison	Mrs. Cynthia Buckel	Ms. Beverly Dinkins	Mrs. Kelly Gagliardo
Mrs. Nancy Swords & Mr. Chris Hopp	Jesse Anderson	Ms. Judith A. Buffenbarger+	Ms. Kathleen Dockter+Δ	Ms. Donna M. Gardiner
Mrs. Matilda Szaroletta & Mr. Howard Szaroletta	Mrs. Joanne Anderson	Mr. Donald L. Bullis	Mrs. Donna Dodds Hamm+Δ	Mrs. Mary Gartland
Mr. & Mrs. Jon Talarico	Dr. Raul Andino	Ms. Suzanne K. Burch+Δ	Mr. Scott Dolan	Ms. Patricia GebhardtΔ
Mr. James H. Tanner & Mr. James D. Tanner*	Ms. Roberta Arenson	Ms. Christine Burgess	Ms. Elizabeth Dolza	Ms. Christine Geldhoff
Mrs. Amanda Teeter-Hoffman & Mr. Josh Hoffman	Ms. Aderemi Artis	Ms. Tamera Burgess+	Mr. Jeff Dominguez	Ms. Judi Generous+
Mr. & Mrs. Thomas Thompson	Mr. Ronald Artis	Ms. Diane M. Busha	Mrs. Kimberly Donahue+	Mrs. Alicia Geromel
Mr. & Mrs. Roger Timm+	Mrs. Barbara Asa	Mrs. Ruby Jean Butler	Ms. Joan E. Dowler+	Ms. Sylvia Ghainer
Mr. & Mrs. Paul N. Torre+	Ms. Frances L. Ascencio+	Mrs. Beverly Calkins	Ms. Mary Downey+	Ms. Tamara Ghoujegli
George & Jean Toth+	Ms. Deborah Avery	Ms. Lois CallanΔ	Ms. Patricia S. Duffy	Ms. Lee Giacalone
Mr. & Mrs. Robert Turley+Δ	Mr. Patrick Baldwin	Ms. Kathleen L. Cantley	Ms. Christine Dugas	Mrs. Gretchen Giles
Mr. & Mrs. Robert Vale+	Mr. Chris Balog+	Mrs. Phyllis A. Carter	Ms. Shirley Dunbar-Pumphrey+Δ	Mr. John A. Giolitti
Ms. Carol Van Buren	Ms. Jennifer Banacki	Kathleen S. Cauley+	Ms. Linda Dzurka	Ms. Margaret Giordano
Rev. Tom & Mrs. Beth Wachterhauser+	Ms. RoxAnn Banks+	Ms. Donna Champagne	Mrs. Gloria J. Eby-Buck	Ms. Grace Glass
Mr. & Mrs. Gerald L. Walters	Ms. Shirley Bannatyne	Ms. Teresa Charette	Ms. Karen Edwards	Ms. Nancy C. GoffΔ
Mrs. & Miss Anita Walton	Mrs. Barbara Barrell	Mrs. Kay Cherry+	Mr. Leonard Edwards	Ms. Donna Gohs
Mr. & Mrs. James Waner	Ms. Ida B. Barron	Ms. Cheryl Christoff	Ms. Marcia L. Elbert+	Ms. Tracy Goll
Mr. & Mrs. Ricky Ware	Ms. Julie Bastianelli	Mrs. Jeanne Clark	Mrs. Lynn Elliott+	Mrs. Kathleen Goodrow
Mr. & Mrs. William WhiteΔ	Mrs. Linda Bedtelyon	Mrs. Sally Clark	Mrs. Eileen Ellis	Ms. Estella L. Gould
Mr. & Mrs. William J. Wishart+	Mrs. Doris Beebe+Δ	Mr. Bob Clayton+Δ	Mrs. Yasmien Elshikaky	Ms. Diane M GrangerΔ
Mr. Richard Wurtz+	Dr. David S. Bertolotti, Jr.	Ms. Sandy Cleomaude	Mrs. Rosemary EmertonΔ	Mrs. Bobbie J. Greer
Ms. Yedan Yin & Mr. Shane Trese	Ms. Betsy Best+	Miss Anne Cole	Mr. George Ensinger	Mrs. Marilyn Gregor+
Mr. Barton M. Zachrich	Mrs. Elizabeth A. Bickford+	Ms. Tracy Collier-Nix	Miss Shirley EppsΔ	Ms. Susan Grenier
Mr. Ray Zbiciak+	Mrs. Rosemary Bigelow	Mrs. Nikola Conklin	Ms. Ida L. Epstein+	Dr. Richard L. Griffin
Mr. Asa Zuccaro & Ms. Mildred Silva Solano	Ms. Michelle Blaisdell	Dr. Christina R. Consiglio+Δ	Ms. Nancy Epstein+Δ	Msgr. Richard Groshek
	Ms. Susan P. Bloomfield	Ms. Carol L. Cook	Ms. Adele Ernsberger	Ms. Mary L. Grossklaus+
	Ms. Mary Bluteau	Miss Patricia Cook	Ms. Gisele Farah	Mrs. Joseph Guerin
	Ms. Kimberly A. Bodette	Mrs. Susan CooperΔ	Miss Samantha Farah+	Ms. Annie Guevara+
	Ms. Diane Boegner+	Ms. Starr Cornell	Mr. E. Richard Farone+	Ms. Carole GutteridgeΔ
	Ms. Janeen Booten	Mrs. Cheryl Courneya+Δ	Ms. Mary S. Felix+Δ	Ms. Catherine Gwizdz
	Mrs. Connie Borrie	Miss Vera L. Crandall	Ms. Kristina Feller	Mrs. Gail Hale
	Ms. Mary Ann Boyd	Mrs. Karen Crandell+Δ	Ms. Janine Ferguson	Mr. Thomas M. Haley
	Ms. Elizabeth Brady Marasco	Ms. Ericha Cromwell Thompson	Mrs. Sally Ferguson	Ms. Sandy Hall
	Mrs. Doris Bravender	Mrs. Griselda Cubitt	Mr. Gregory D. Fiedler	Ms. Cathryn Hallisy
	Miss Jeanette Brayan	Mrs. Nancy J. Cunningham	Ms. Judith Fisher	Ms. Angela Hamilton

Mrs. Sandy Hanert	Ms. Laurie Jensen-Russell	Ms. Kathy Liggett	Ms. JoAnn Miller	Mrs. Betty J. Pearson+
Mrs. Lorraine S. Harcek*	Mrs. Rita MacGregor Jeric	Mrs. Yvonne Liggett	Ms. Junko Miller+	Mr. James Peltier
Ms. Jennifer Harris	Mr. Robert V. Jewell	Mrs. Mary E. Liljeblad	Ms. Kareyna Miller	Ms. Davina Pendragon
Ms. Lois Hartranft+	Mrs. Elaine Johnson	Mr. Tom Lipinski	Mrs. Pat Miller	Ms. Orlene Peresta
Mrs. Linda Harwood	Ms. Judy Johnson+	Ms. Teresa A. Littlejohn+Δ	Mr. Jack D. Minore	Mrs. Sally Pettinger
Mr. Paul F. Hauth+	Miss Lela Johnson	Ms. Bree Lloyd	Mrs. Patricia Minshall	Mr. Dominic Philippi
Mrs. Danielle Hawkins	Ms. Merrie Johnson	Ms. Sue Lockard	Ms. Barbara Mirsky+	Ms. Marissa Pierce
Ms. Jean Hawkins	Mr. Richard G. Johnson+	Miss Valerie Looney	Mrs. Donna Misener	Ms. Sally Pierson+
Mrs. Barbara G. Hayes	Ms. Janet Jones	Ms. Mary Lorenz	Ms. Colleen Mitchell	Ms. Jeanne Pina
Ms. Carole D. Hecker	Ms. Joan Painter Jones	Mr. James L. Luckey+Δ	Mr. John R. Mittelstadt	Ms. Pamela J. Pinti*
Ms. Anne M. Heidel+	Mrs. Debra Kalush	Ms. Gale Luketich	Mrs. Sue Modrak	Mrs. Jan Plymale
Mr. Robert Hentgen	Ms. Heather Karr	Ms. Melody Lumsden	Ms. Christy Moore	Ms. Jennifer Poole
Ms. Trudy Herriman	Ms. Rachael Kasperowicz	Mrs. Janet A. Lutton	Mr. Gerald Moore	Miss Teresa Porteous+
Ms. Harriett HessΔ	Ms. Shelly Kaye	Miss Jackie MacFarland	Ms. Kathleen Moore+Δ	Mr. Michael Post+
Ms. Bonnie Hill	Ms. Nedra Keahl+Δ	Ms. Kathleen MacMillan	Ms. Dee Moreno	Mr. David Potts
Mrs. Lynn Hill-Funk	Mrs. Chloe Keast+	Ms. Suzanne MacWilliams+	Ms. Marlene Morris+	Ms. Elesia Powell
Ms. Melissa S. Hill+	Ms. Jane Kelly	Ms. Giovannina Maio+Δ	Mr. Jeff MortimerΔ	Ms. Deb Prawdzik
Ms. Donna Hines	Mrs. Spencer Kelly Lanyi+Δ	Ms. Tula Mallos	Ms. Frederica E. Muller+	Mrs. Daphne Prescott+
Mrs. Gloria A. Hines	Ms. Susan KellyΔ	Ms. Cynthia Mann	Ms. Diane Murphy	Mr. Harry S. Preston
Mrs. Mary Ann Hines	Ms. Brenda Kendall+	Ms. Demitra Manutes-Pyles	Ms. Sarah Murray	Miss Lindsey Pringle
Mrs. Lois D. Hodges+	Ms. Diana KingΔ	Dr. Pamela Marin	Mr. Scott Murray	Mr. Phillip W. PurdyΔ
Ms. Dora Hoelscher	Ms. Dora King	Mrs. Mary Markel	Ms. Michelle NassarΔ	Mr. Mark Rairick
Ms. Sandy Hofacker+	Ms. Carroll Kinkade	Ms. Marjorie Markon+	Ms. Carol F. Negendank	Ms. Heidi Ray+
Ms. Leni Hoffman	Mrs. Ellen KisselΔ	Ms. Lucille M. Martel+Δ	Ms. Sherry Nelson	Ms. Barbara Reehl
Mr. Per Holthe	Mr. Stephen Kober	Dr. Ronald Massie	Dr. James Neubeck	Ms. Rose Mary Reiz
Mr. Sidney Horton Jr.	Ms. Valentina Kostitcyna	Ms. Gina Matchett	Ms. Mary Beth Neumann	Ms. Bertha Rhodes
Ms. Judith Hovey	Miss Sheryl Kreiner	Ms. Sue Matlock	Ms. Sandra Nicholas	Mrs. Haehyun Rhyee
Dr. John A. Howland	Mr. Tracy Krumm+	Ms. Nancy Matson	Ms. Joyce Nichols	Mrs. Sharon Rickard
Ms. Helen R. Hoyt*+	Mr. David Kummer+	Mrs. Annette L. Mattarella	Ms. Kate Nickels	Mr. John Rideway
Ms. Christine Hull	Ms. Ruth Kunka	Ms. Gina Mattarella	Ms. Patsy Noffsinger+Δ	Mrs. Kathy A. Ridley
Mrs. Susan Hungerford	Mr. James T. Legacy	Ms. Rosellen McAlearΔ	Mrs. Betty Noonan	Mrs. Andrea Roat
Mrs. Gail D. Hutchison	Mr. Miles Lam	Ms. Susan McCormack	Ms. Missie Nordrum	Ms. Edith A. Robbins+
Mr. Thom M. Hutchison	Miss Tanya Lane+	Mr. Aron McCormick+	Miss Janet T. O'KeefeΔ	Mrs. Deborah Robertson
Mrs. Mary Ittigson	Mrs. Michelle Lankton	Mrs. Mary Grace McFarlane	Ms. Patricia O'Keefe	Ms. Shelia Robinson
Mr. Steven Izzo+Δ	Mr. John Lanser	Ms. Laura McGuire	Mrs. Marsha L. Ochodnicky+	Ms. Violet K. Rodgerson
Ms. Nancy Jackson	Ms. Dorothy Latchana	Mr. Philip J. McKeachie	Ms. Nancy Olds	Mr. Kyle Rogowski
Miss Esther M. Jacob+	Ms. Marie Lauer	Ms. Kim McKerracher	Mr. Joseph Opalinski	Ms. Kathleen RollinsΔ
Ms. Julie A. Jacot	Ms. Sandra Law	Mrs. Celeste McNally	Ms. Lorie Ouellette	Mrs. Deborah K. Rowe
Ms. Mary Jacobs	Ms. Betty Leavitt+	Mrs. Cheryl McPherson	Dr. Shirley Owens	Ms. Margaret J. RoyceΔ
Ms. Rene Jacobs	Mrs. MaryBeth Leet	Ms. Lisa Meinburg	Ms. Jolene Padgett	Ms. Lori Roysseau
Mrs. Jackie Jakeway	Mrs. Mericlar Letter	Mr. Herb Merrell+	Mr. Blake Pagnier	Mrs. Anne Rubenstein
Mrs. Colleen L. Janos	Mrs. Suzanne LewisΔ	Mr. Gary L. Messenger+Δ	Ms. Cherie Palmer	Ms. Debra Rubey+Δ
Mrs. Linda Jaworski	Dr. John A. Ley	Ms. Nancy Meszaros	Mr. John G. Park	Ms. Carol F. Rush
Ms. Cathryn Jeffers-Goodwine	Ms. Margaret Liechti	Ms. Jill Michelle	Ms. Margaret Parker	Mrs. Jamelee Ryckman
Ms. Connie JenningsΔ	Ms. Diane Lien+	Ms. Monica Mihailuk*	Mrs. Margaret Patterson	Ms. Ramona Sain

Ms. Sherri K. Salem	Mr. Donald Steibel	Mr. David VanWinkle	Miss Patrica Balistreri	McKenna Marsh
Miss Christine Sarka	Mrs. Patricia Stepanick	Ms. Jeanette VeenhuisΔ	Cassidy Barnett	Miss Justina McCormick
Mrs. Doreen Schafer	Ms. Audrey E. Stephens+	Mrs. Mary Ann Vergith	Miss Marin Beardslee	Miss Allison McDonagh*
Miss Jenette Schanick+Δ	Ms. Tracey Stewart+	Ms. Jolyn Vita	Miss Elizabeth Behm	Miss Madeline McIntyre*
Mrs. Linda Scharrer	Ms. Christina Stolz	Ms. Dorothy Wagner	Miss Laurel Bissinger	Mr. Jake Millerschin
Mrs. Jane Schepler	Ms. Sally Strand	Mr. Mark Wagner	Camryn Blair	Mr. Thomas L. Myers
Mrs. Mary Schiros	Mr. Tony Stroh	Mrs. Renee Wagner	Mr. Dylan Borgerding	Miss Rachel Nagy*
Mrs. Margrit Schlatter+	Mrs. Norma Struck	Ms. Theresa Wall	Miss Keely Bradish	Miss Noor Nounou
Mr. Ronald J. SchmitzΔ	Ms. Suzanne Sugden+	Mrs. Barbara WalworthΔ	Ms. Bridgett Brewer	Ms. Stephanie O'Neil
Mr. Lawrence J. Schuba	Mr. Richard Suhr+	Ms. Jane Walworth+Δ	Miss Hailey Campbell	Miss Kiyana Perkett
Ms. Linda SchwedtΔ	Susan Sullivan+	Rev. Al Wamsley	Olivia Carnes	Miss Emily Peterson
Mrs. Marsha Schweikert	Ms. Virginia Sullivan	Ms. Wanda R. Warby+Δ	Miss Lia Clark	Miss Molly Polehna
Mrs. Sheila A. Schweinsberg+	Mrs. Kathy Suski	Ms. Jean Warner	Miss Kaylee Cornell	Miss Katherine Popyk
Ms. Bernice Scott	Mrs. Olga Swarouth	Mr. Edward Watkins	Mr. Brayden Cummings	Phoenix Prevett
Ms. Jacqueline Scott+Δ	Ms. Summer Switzer	Mr. Gary D. Weichner+Δ	Miss Zyana Cuthpert	Peyton Rey
Mrs. Marilyn Secatch	Rev. Frederick H. Taggart+	Dr. David R. Weinberg	Miss Lillian Decker*	Miss Ellie Reynolds
Mrs. Leslie Seigrist	Mr. David Tait	Mrs. Marcia Whaley	Braylan Delduca	Blaise Rhein
Ms. Mary Sequin+Δ	Ms. Patricia Tasich	Mrs. Joyce Wheat+Δ	Taylor Drury	Mr. Andrew Roth
Mrs. Ruth O. Sharpe+	Ms. Dorothy S. Taylor+	Mrs. Deborah Wheeler+	Mr. Ethan Dupuis	Miss Gabby Sanfilippo
Ms. Ellie Sharrow+	Ms. Ivy Taylor	Ms. Joanne White+Δ	Miss Alexandra Dutcher	Mr. Noah Scott
Mrs. Hannelore Shattuck	Mr. Thomas A. Taylor	Ms. Kimberly Wilcox+Δ	Miss Dominic M. Fabi	LaSasha Sharp
Ms. Patricia Shepard	Mr. Matthew Telliga	Mrs. Janet Williamson+	Miss McKenna Friedt	Ms. Sana Simkani*
Dr. Janice Shimoda+	Mrs. Susan Terbrueggen	Ms. Jean Willing	Miss Abigail Griffin	Payton Slater
Ms. Patrice Shriver+Δ	Ms. Michelle Theil	Mr. Richard L. Wilson	Miss Grace Hamman	Alcus Smith
Mr. Thomas Shriver+	Mrs. Sally Thielen	Ms. Diane M. Wiselogle+	Mr. William Rabiah Harmon	Amoz Smith
Mrs. Mary Shumsky	Mrs. Colleen Thompson	Ms. Laura Wolfe+	Ms. Alfreda A. Harris+	Miss Lindsey Smith
Ms. Margaret Simen+	Ms. Jenny Thompson	Mr. Gary Wood	Mr. Drew Hartley	Miss Haley Solo
Ms. Sandra Simmons	Mr. Mick Thompson	Ms. Susan Wotring	Mr. Michael Hatten	Miss Haylei Solwold
Ms. Patricia A. Sincock	Mr. Mark Q. Thornton+Δ	Mrs. Margie Murray Wright	Miss Catherine A. Haynes	Miss Aliche Stanley
Ms. Loretta Small	Ms. Jannell Tillman	Ms. Veronica Wroblewski	Miss Ashley Hense	Sheyenne Stowe
Ms. Joan W. Smalley+	Mr. Charles Tobias	Mr. Sean Wszelaki	Miss Erin Hunt	Mr. Nicholas Sturtevant
Dr. Ernestine R. Smith+Δ	Mrs. Lei Tobias+	Ms. Darla S. Wynn+Δ	Miss Allison Jenkins	Mr. James Taggart
Ms. Kathy Smith	Mrs. Linda Todorow	Mrs. Mary Yauch	Miss Mackenzie Johnson	Ms. Olivia Thomas-David
Ms. Sue Snyder	Mr. Thomas Tomasek	Ms. Victoria Ybarra	Mr. Tyler Johnson*	Miss Madison Threet*
Mrs. Jill Sodt	Ms. Karen Tomlinson	Mrs. Barbara A. Young	Miss Wesley Ann P. Johnson+	Miss Kasmira Trevorrow
Mrs. Barb Soloko	Mrs. Sherry Tompkins	Mr. Christopher Young+	Ms. Kai Joshua	Miss Abby Trinkle
Ms. Melody Sowers	Mrs. Joan Topham	Ms. Cindy Zajac	Mr. Matt Karas	Miss Amanda Tripp
Ms. Angelica Speck	Mr. John Tracy	Ms. Janie Zelnis	Miss Emma Kaye	Miss Madelyn Vamossy
Ms. Susanne Spiegel	Ms. Jane B. Trotter	Mrs. Helen Zimmerman	Miss Madeline Kelly	Mr. Ben Vardare
Mrs. Josephine Sredich+	Ms. Susan Trovillion	Ms. Maria Zoltowski	Miss Noelle Kennedy	Miss Nicole Vrabel
Mrs. Emma Lou St. Onge	Mrs. Anna Marie Tucker	<b>Student</b>	Miss Georgia Kovalick	Mr. Alex Weidenhammer
Mrs. Marel L. Staisil	Mrs. Jean ValleyΔ	(\$20 annually)	Miss Paige Lamphere	Mr. Benjamin West
Ms. Zoe Starkweather+Δ	Ms. Rita Valley+	Ms. K. Yasmine Abdelaal	Miss Rachel Landes	Damian White
Ms. Suzanne Stasiak	Ms. Lynn VanAmburg	Mrs. Nadia Alamah	Mr. Evan Latture	Ms. Lisa Williams
Ms. Michelle Steelman	Ms. Sarah VanTol		Miss Peyton Lowe	Mr. Nataevion Williams

Miss Emily Wilson\*  
Miss Sophia Wittum

**Youth**

*(\$20 annually)*

Lydia Adams  
Jack Aguirre  
Steve Aguirre  
Rick Allen  
Avery Bates-Kirby  
Brody Bellamy  
Kylie Bill  
Eden Boros  
Omni Bowie  
Dylan Boyd  
Joseph Brown  
Samantha Bryan  
Dara Bukoffsky  
Audrey Cmejrek  
Cooper Cronkright  
Zack Cronkright  
Kennedy Dean  
Anjali Devisetty  
Sohun Devisetty  
Corbin Dixner  
Ryland Dixner  
Mekhi Forward  
Grace Gilson  
Elisabeth Glover  
Janelle Glover  
Amirah Gordon  
Jillian Guise  
Carson Haffajee  
Kai Haffajee  
Hadley Hamann  
Sarah Rabiah Harmon  
Abigail Howes  
Owen Hudson-Wolverton  
James Jaquith  
Jackson Jeffery  
Ariel Y. Jenkins  
Adin Johns  
Noah Johns  
Ryan Johnson  
Averi King

Delaney Klosterman  
Cali Knez  
Emery Malnati  
Alice McAra  
Bernie McAra  
Miriam Nounou  
Jacob Orzol  
Cullen Roberson  
Parker Roeser  
Isobel Rose  
Jan Rozen  
Karsten Sabo  
Elliot Sanford  
Michael Savarino  
Sophia Savarino  
Connor Seigrist  
Seena Simkani  
Leah Sims  
Emily Slocum  
Laurn Smith  
Jalen Spight  
Dita Monroe Stroebel  
Lucas Tower  
Justyn A. Towers  
Tucker Vasicek  
Annika Warby  
Riker Warby  
Abigayle Weder  
Gus Wickerman  
Grace Williams



# Financial Statement

Board of Directors  
Flint Institute of Arts  
Flint, Michigan

## Independent Auditor's Report

We have audited the accompanying financial statements of Flint Institute of Arts which comprise the statement of financial position as of June 30, 2016, and the related statements of activities, functional expenses, and cash flows for the year then ended, and the related notes to the financial statements.

Management is responsible for the preparation and fair presentation of these financial statements in accordance with accounting principles generally accepted in the United States of America; this includes the design, implementation, and maintenance of internal control relevant to the preparation and fair presentation of financial statements that are free from material misstatement, whether due to fraud or error.

Our responsibility is to express an opinion on these financial statements based on our audit. We conducted our audit in accordance with auditing standards generally accepted in the United States of America. Those standards require that we plan and perform the audit to obtain reasonable assurance about whether the financial statements are free of material misstatement.

An audit involves performing procedures to obtain audit evidence about the amounts and disclosures in the financial statements. The procedures selected depend on the auditors' judgment, including the assessment of the risks of material misstatement of the financial statements, whether due to fraud or error. In making those risk assessments, the auditor considers internal control relevant to the entity's preparation and fair presentation of the financial statements in order to design audit procedures that are appropriate in the circumstances, but not for the purpose of expressing an opinion on the effectiveness of the entity's internal control. Accordingly, we express no such opinion. An audit also includes evaluating the appropriateness of accounting policies used and the reasonableness of significant accounting estimates made by management, as well as evaluating the overall presentation of the financial statements.

We believe that the audit evidence we have obtained is sufficient and appropriate to provide a basis for our audit opinion.

In our opinion, the financial statements referred to above present fairly, in all material respects, the financial position of Flint Institute of Arts as of June 30, 2016, and the changes in its net assets and its cash flows for the year then ended in accordance with accounting principles generally accepted in the United States of America.

We have previously audited Flint Institute of Arts' June 30, 2015, financial statements, and we expressed an unmodified audit opinion on those audited financial statements in our report dated December 10, 2015. In our opinion, the summarized comparative information presented herein as of and for the year ended June 30, 2015 is consistent, in all material respects, with the audited financial statements from which it has been derived.

Our audit was conducted for the purpose of forming an opinion on the financial statements as a whole. The Schedule of Investments is presented for purposes of additional analysis and is not a required part of the financial statements. Such information is the responsibility of management and was derived from and relates directly to the underlying accounting and other records used to prepare the financial statements. The information has been subjected to the auditing procedures applied in the audit of the financial statements and certain additional procedures, including comparing and reconciling such information directly to the underlying accounting and other records used to prepare the financial statements or to the financial statements themselves, and other additional procedures in accordance with auditing standards generally accepted in the United States of America. In our opinion, the information is fairly stated in all material respects in relation to the financial statements as a whole.



4468 Oak Bridge Dr.  
Flint, MI 48532  
810.732.3000  
800.899.4742  
810.732.6118 fax

*Yeo & Yeo, P.C.*

Flint, Michigan  
April 12, 2017



Statement of Financial Position

June 30, 2016 (with summarized comparative information for 2015)

	Operating Fund	Plant Fund	Project Fund	Permanent Collection Fund	Endowment Fund	Total All Funds	
						2016	2015
<b>Assets</b>							
Cash and cash equivalents	\$ 2,644,619	\$ -	\$ -	\$ -	\$ -	\$ 2,644,619	\$ 860,628
Accounts receivable	96,096	-	-	-	-	96,096	82,318
Contributions receivable	-	-	655,000	-	502,681	1,157,681	786,015
Inventory	108,996	-	-	-	-	108,996	125,974
Prepaid expenses	49,680	-	-	-	-	49,680	80,624
Due from other funds	-	2,585,657	-	-	-	2,585,657	1,081,797
Fixed assets	-	15,900,630	-	-	-	15,900,630	15,868,586
Intangible asset	-	25,000	-	-	-	25,000	25,000
Permanent collection	-	-	-	1	-	1	1
Interest in income trusts	-	-	-	-	1	1	1
Trusts held by third party	-	-	-	-	1,876,562	1,876,562	2,009,945
Investments	457,816	-	-	504,868	21,826,369	22,789,053	21,069,449
<b>Total Assets</b>	<b>\$ 3,357,207</b>	<b>\$ 18,511,287</b>	<b>\$ 655,000</b>	<b>\$ 504,869</b>	<b>\$ 24,205,613</b>	<b>\$ 47,233,976</b>	<b>\$ 41,990,338</b>
<b>Liabilities and Net Assets</b>							
<b>Liabilities</b>							
Accounts payable	\$ 25,161	\$ -	\$ -	\$ -	\$ -	\$ 25,161	\$ 42,513
Accrued expenses and withheld taxes	72,265	-	-	-	-	72,265	57,588
Due to other funds	2,585,657	-	-	-	-	2,585,657	1,081,797
Deferred revenue	24,146	-	-	-	-	24,146	33,889
<b>Total Liabilities</b>	<b>2,707,229</b>	<b>-</b>	<b>-</b>	<b>-</b>	<b>-</b>	<b>2,707,229</b>	<b>1,215,787</b>
<b>Net Assets</b>							
Unrestricted - operations	649,978	-	-	-	13,007,758	13,657,736	461,344
Unrestricted - net investment in fixed and intangible assets	-	15,925,630	-	-	-	15,925,630	15,868,586
Temporarily restricted	-	2,585,657	655,000	504,869	1,569,430	5,314,956	673,958
Permanently restricted	-	-	-	-	9,628,425	9,628,425	23,770,663
<b>Total Net Assets</b>	<b>649,978</b>	<b>18,511,287</b>	<b>655,000</b>	<b>504,869</b>	<b>24,205,613</b>	<b>44,526,747</b>	<b>40,774,551</b>
<b>Total Liabilities and Net Assets</b>	<b>\$ 3,357,207</b>	<b>\$ 18,511,287</b>	<b>\$ 655,000</b>	<b>\$ 504,869</b>	<b>\$ 24,205,613</b>	<b>\$ 47,233,976</b>	<b>\$ 41,990,338</b>

## Statement of Activities

June 30, 2016 (with summarized comparative information for 2015)

	Unrestricted	Unrestricted	Temporarily	Temporarily	Temporarily	Unrestricted	Temporarily	Permanently	Total All Funds	
	Operating Fund	Plant Fund	Restricted Fund	Restricted Project Fund	Restricted Permanent Collection Fund		Restricted Endowment Fund	Restricted	2016	2015
<b>Revenues, Gains, and Other Support</b>										
Public support										
Contributions	\$ 2,570,661	\$ 150,720	\$ 3,000,000	\$ 955,000	\$ 61,622	\$ -	\$ -	\$ 572,083	\$ 7,310,086	\$ 8,106,413
Bray and Pierson trust distributions	94,744	-	-	-	-	-	-	-	94,744	21,369
Community Foundation trust distributions	402,194	7,516	-	-	38,183	-	-	-	447,893	379,984
Total public support	3,067,599	158,236	3,000,000	955,000	99,805	-	-	572,083	7,852,723	8,507,766
Revenue										
Museum shop and cafe sales	224,449	-	-	-	-	-	-	-	224,449	233,118
Cost of goods sold	(146,829)	-	-	-	-	-	-	-	(146,829)	(175,418)
Gross profit	77,620	-	-	-	-	-	-	-	77,620	57,700
Memberships	216,286	-	-	-	-	-	-	-	216,286	211,915
Tuition	248,233	-	-	-	-	-	-	-	248,233	257,386
Ticket sales	46,801	-	-	-	-	-	-	-	46,801	49,324
Investment income	10,703	-	-	-	4,868	-	424,934	-	440,505	444,942
Net realized gain on investments	3,586	-	-	-	-	-	612,155	-	615,741	322,877
Miscellaneous income	268,520	-	-	-	-	-	-	-	268,520	65,852
Total revenue	871,749	-	-	-	4,868	-	1,037,089	-	1,913,706	1,409,996
Total public support and revenue	3,939,348	158,236	3,000,000	955,000	104,673	-	1,037,089	572,083	9,766,429	9,917,762
Net assets released from restriction	-	414,343	(414,343)	-	-	13,007,758	2,107,645	(15,115,403)	-	-
<b>Expenses and losses</b>										
Program services										
Classes	420,707	121,429	-	-	-	-	-	-	542,136	535,346
Public information	462,977	20,977	-	-	-	-	-	-	483,954	467,786
Permanent collections	722,813	98,975	-	-	-	-	-	-	821,788	746,396
Exhibitions	764,048	205,336	-	-	-	-	-	-	969,384	834,680
Museum shop	274,053	41,954	-	-	-	-	-	-	316,007	309,724
Programs	679,283	81,248	-	-	-	-	-	-	760,531	711,112
Total program services	3,323,881	569,919	-	-	-	-	-	-	3,893,800	3,605,044
Supporting services										
Management and general	1,003,476	20,977	-	-	-	-	-	-	1,024,453	1,039,024
Fundraising	217,647	-	-	-	-	-	-	-	217,647	236,958
Total supporting services	1,221,123	20,977	-	-	-	-	-	-	1,242,100	1,275,982
Total expenses	4,545,004	590,896	-	-	-	-	-	-	5,135,900	4,881,026
Change in net assets before other changes in net assets	(605,656)	(18,317)	2,585,657	955,000	104,673	13,007,758	3,144,734	(14,543,320)	4,630,529	5,036,736

Statement of Activities

Year ended June 30, 2016 (with comparative totals for 2015)

	Unrestricted Operating Fund	Unrestricted Plant Fund	Temporarily Restricted	Temporarily Restricted Project Fund	Temporarily Restricted Permanent Collection Fund	Unrestricted	Temporarily Restricted Endowment Fund	Permanently Restricted	Total All Funds	
									2016	2015
<b>Other changes in net assets</b>										
Loss on disposal of fixed assets	-	-	-	-	-	-	-	-	-	(71,668)
Proceeds from sales of collection items not capitalized	-	-	-	-	-	-	-	-	-	611,200
Purchases of collection items not capitalized	-	-	-	-	(290,674)	-	-	-	(290,674)	(6,005)
Trust transfers	722,848	-	-	-	-	-	(722,848)	-	-	-
Interfund transfers	110,086	50,361	-	(362,757)	79,669	-	122,641	-	-	-
Change in value of trusts held by third party	-	-	-	-	-	-	-	(133,383)	(133,383)	(6,789)
Net unrealized gain (loss) on investments	(13,644)	-	-	-	-	-	(975,097)	534,465	(454,276)	(158,052)
<b>Total other changes in net assets</b>	<b>819,290</b>	<b>50,361</b>	<b>-</b>	<b>(362,757)</b>	<b>(211,005)</b>	<b>-</b>	<b>(1,575,304)</b>	<b>401,082</b>	<b>(878,333)</b>	<b>368,686</b>
<b>Total change in net assets</b>	<b>213,634</b>	<b>32,044</b>	<b>2,585,657</b>	<b>592,243</b>	<b>(106,332)</b>	<b>13,007,758</b>	<b>1,569,430</b>	<b>(14,142,238)</b>	<b>3,752,196</b>	<b>5,405,422</b>
<b>Net assets - beginning of year</b>	<b>436,344</b>	<b>15,893,586</b>	<b>-</b>	<b>62,757</b>	<b>611,201</b>	<b>-</b>	<b>-</b>	<b>23,770,663</b>	<b>40,774,551</b>	<b>35,369,129</b>
<b>Net assets - end of year</b>	<b>\$ 649,978</b>	<b>\$ 15,925,630</b>	<b>\$ 2,585,657</b>	<b>\$ 655,000</b>	<b>\$ 504,869</b>	<b>\$ 13,007,758</b>	<b>\$ 1,569,430</b>	<b>\$ 9,628,425</b>	<b>\$ 44,526,747</b>	<b>\$ 40,774,551</b>

# Board, Staff & Faculty

## Board of Trustees

Dean Yeotis, *President*  
 Thomas J. Mitchell, *First Vice-President*  
 Louis A. Hawkins, *Second Vice-President*  
 Marilyn Kopp, *Secretary*  
 Robert S. Piper, *Treasurer*  
 Lynne Hurand, *Founders Society President*  
 Kathryn C. Boles  
 Eleanor E. Brownell  
 James Cummins  
 Shannon Easter White  
 Mona Hardas  
 Janice T. Harden  
 Jimmy King  
 Jamile Lawand  
 Thomas B. Lillie  
 Bill Moeller  
 Elizabeth S. Murphy  
 Jay Nelson  
 Ira Rutherford  
 Michael Rucks  
 Elisabeth Saab  
 Patt Spangler  
 Lynne A. Taft-Draper, *Friends of Modern Art President*  
 David T. Taylor  
 D. J. Trela, *FCCC Board Representative to FIA Board*  
 Jan Werschky

## Honorary Trustee

Elizabeth Neithercut

## Staff & Art School Faculty

John Henry, *Executive Director*  
 Guy Adamec, *Art School Faculty*  
 Zack Akers, *Security*  
 Valarie Allen, *Membership Coordinator*  
 James Ames, *Art School Faculty*  
 Rebecca Andrus, *Art School Faculty*  
 Ed Bradley, *Associate Curator of Film*  
 Jacob Brasseur, *Café Assistant*  
 Jessica Brown, *Art Educator*  
 Tom Cheek, *Photographer*  
 Bryan Christie, *Facilities Manager*  
 Justin Clanton, *Facilities Assistant*  
 Gail Curry, *Receptionist*  
 Lynn Friesen-Davis, *Art Educator*  
 Monique Desormeau, *Curator of Education*  
 Alla Dubrovich, *Art School Faculty*  
 Michelle Dummer, *Assistant Curator of Education*  
 Sarah Dunne, *Director of Member & Guest Relations*  
 Pamela Ehde, *Early Childhood Educator*  
 Donovan Entrekim, *Director of the Art School*  
 William Farmer, *Security*  
 Craig Fenner, *A/V Technician*  
 Alice Foster-Stocum, *Art School Faculty*  
 Lynne Friesen-Davis, *Art Educator*  
 Kimberly Giacchina, *Visitor Services*  
 Anthony Gittens, *Security*  
 Tracee Glab, *Curator of Collections & Exhibitions*  
 Jarvion Glenn, *Café Assistant*  
 Jennifer Glomski, *Education Assistant*  
 Jeff Hageman, *Art School Faculty*  
 Jaclyn Hatcher, *Retail Clerk*  
 Paul Hauth, *Art School Faculty*  
 Jennifer Hickmott, *Program Coordinator*  
 Craig Hinshaw, *Art School Faculty*  
 Barbara Holmer, *Art School Faculty*  
 Donald Howell, *Facilities Assistant*  
 Robert Irwin, *Security*  
 Heather Jackson, *Assistant Registrar*  
 Judy Johnson, *Librarian*  
 Kimberly Justice, *Retail Clerk*  
 Michelle Kachelski, *Café Assistant*  
 Meghan Kelly, *Education Assistant*  
 Ryan Kelsey, *Art School Faculty*  
 Donielle Keyes, *Security*  
 Sarah Kohn, *Assistant Curator*  
 Karyn Konkel, *Art School Faculty*  
 Sergio Korth, *Art Educator*  
 Natalia LaFuente, *Events Coordinator*  
 Miles Lam, *Graphic Designer*  
 Kayla Latham, *Visitor Services*  
 Michelene LaTurneau, *Security*  
 Savannah Lee, *Social Media Coordinator*  
 Emily Legleitner, *Curatorial Assistant*  
 Igor Macherkevich, *Art School Faculty*  
 Kathrine Martin, *Visitor Services*  
 Alexis Massimino, *Art School Assistant*  
 Donald McCombs, *Security*  
 Jeffrey McLaurin, *Facilities Assistant*  
 Michael Melenbrink, *Director of Finance & Administration*  
 Erin Mohrman, *Art School Faculty*  
 Lori Motley, *Assistant to the Executive Director*  
 Bryan Nichols, *Facilities Assistant*  
 Okola Nicholson, *Event/Rental Assistant*  
 Emily O'Boyle, *Videographer*  
 Taylor Osentoski, *Café Assistant*  
 Matthew Osmon, *Art School Faculty*  
 Peter Ott, *Registrar*  
 Ashley Phiffer, *Curatorial Assistant*  
 Cory Potter, *Retail Manager*  
 Karvel Powell, *Security*  
 Laura Quasarano, *Studio Assistant*  
 Mark Robichaud, *Facilities Assistant*  
 Natalie Robinson, *Security*  
 Scott Romanowski, *Security*  
 Season Roy, *Membership/Administration Assistant*  
 Philip Ruehle, *Art School Faculty*  
 Barry Russell, *Security*  
 Kathryn Sharbaugh, *Director of Development*

Kimberly Sharp, *Assistant Retail Manager*  
 Yvette Shufford, *Visitor Services*  
 Laura Siders, *Education Assistant*  
 Courtney Simpson, *Art School Faculty*  
 Arla Slogor, *Art School Instructor*  
 Eligio Soto, *Security*  
 Anita Spencer, *Art School Instructor*  
 Stephen Staten, *Visitor Services*  
 Hannah Stark, *Assistant to the Director of the Art School*  
 Martin Stefan, *Security Supervisor*  
 Tracey Stewart, *Grants Specialist*  
 Bill Stolpin, *Art School Faculty*  
 Karen Sutherland, *Art School Faculty*  
 Amy Sutkowi, *Assistant to Art School Director*  
 Ashley Toth, *Assistant Events Coordinator*  
 Billy Traylor, *Security*  
 Antwain Trimble, *Executive Chef, Food & Beverage Manager*  
 Mark Upson, *Art Educator*  
 Kathleen Weiss, *Security & Visitor Services*  
 Yolanda West, *Café Assistant*  
 Timothy H. Widener, *Art School Faculty*  
 Hannah Wikaryskz, *Café Assistant*  
 Michael Wilson, *Security*  
 Anna Winglemire, *Visitor Services*  
 Kala Wood, *Membership Assistant*  
 Heather Wright, *Digital Media Specialist*



