



About the Flint Institute of Arts

Incorporated in 1928, the FIA is a privately supported, non-profit organization. It is one of Michigan's most significant cultural and educational resources, serving people of all ages and interests.

The Institute is supported entirely through memberships, sales, rentals, admission and tuition, contributions from individuals and businesses, earned income from endowments and grants from trusts, government, and foundations.

The Institute's collections and temporary exhibitions are open daily (except national holidays). Art classes for adults and children, lectures, films, tours and other special events are also offered as an integral part of the Institute's educational mission.

The Flint Institute of Arts is an Equal Opportunity Employer and provides programs and services without regard to race, color, religion, national origin, age, sex or handicap.

The Flint Institute of Arts is tax-exempt under Section 501 (c) (3).

Mission

To advance the understanding and appreciation of art for all through collections, exhibitions, and educational programs.



FLINT INSTITUTE OF ARTS

1120 E. Kearsley St.
Flint, MI 48503
810.234.1695 phone
810.234.1692 fax
www.flintarts.org

Operating support for the Flint Institute of Arts is provided in part by the Charles Stewart Mott Foundation.



FIA exhibitions and programs are made possible in part with the support of the Michigan Council for Arts and Cultural Affairs, a partner agency of the National Endowment for the Arts.



Contents

president's & director's report	3-4
exhibitions	5-6
videos	7
films	8-9
acquisitions	10-13
loans	14-15
deaccessions	16
art school	17
education	18
income sources	19-20
special events & facility rental	21-22
auxiliary groups	23-24
contributions	25-29
membership	30-39
financial statement	41-44
board, staff, & faculty	45

cover image

Robert Gniewek
American, b. 1951
Rialto, 2001
Oil on linen
14 x 20 inches
Gift of James Pearson Duffy, 2015.4

President's & Executive Director's Report

With this report, we wish to celebrate our achievements of the past 12 months, congratulate those who worked hard to help reach our goals and to express our gratitude to the many generous donors whose gifts make so much possible.

It has always been our belief that the visual arts promote understanding and tolerance of multicultural concepts and historical perspectives by educating people about the art and history of other times and places in the world. Through exposure to authentic works of art, artists, curators and educators, we provide our community an opportunity to learn about and understand that there are cultures and customs in the world different from their own. By making art available, approachable, and accessible to all through exhibitions and a broad range of activities and interpretive programs, the FIA provides multiple ways of exploring the world's most inspiring human expressions.

Having just completed the 4th year of our current five-year strategic plan, we are pleased to report that we made significant progress over the last 12 months in pursuit of the plan's goals to 1.) Develop sustainable income, 2.) Increase audiences, 3.) Maintain the public trust, and 4.) Seek technological advantages in all aspects of operations.

The FIA's goal—to develop sustainable income—includes raising funds for programs and operations annually, as well as raising endowment funds to ensure the long-term financial health of the FIA. 2014 was an especially good year because of the support we received from so many community donors including—the Charles Stewart Mott Foundation who contributed to all areas of our operation; our two auxiliary groups—the Friends of Modern Art and the Founders Society for supporting exhibitions, collections, and the film program; sponsorship of Free Saturdays by FirstMerit Bank; corporate sponsorship of the film program from Merrill Lynch and Guardian Alarm; exhibition sponsorship by the Whiting Foundation, Hurley Medical Center, Kettering University and the Community Foundation of Greater Flint; support of the College Town program came from the Miner Trust; the Loeb Trust and Welch Foundation supported the Pre College Portfolio Development program; we received general operating support from Michigan Council for Arts and Cultural Affairs; the Nartel Family Foundation and Merkley Elderly Trust focused on senior programs; the Sheppy Dog Fund again

supported its annual lecture and early childhood educational programs as well as the Bishop Trust, PNC Bank, Target, and Ruth Mott Foundation. Grants to the Art School Endowment in memory of Claire M. White came from the C.S. Harding Foundation, Isabel Foundation and the C.S. Mott Foundation. Notable individual contributions this year came from: Mr. and Mrs. Jay Nelson, Ms. Lynne Hurand, Mr. Tom Mitchell, Mrs. Doris Sutton, Mrs. Eleanor Brownell, Dr. Alex Chan, Mr. William White, Dr. Jamile Lawand, Ms. Barnie Bishop, Mr. Jim Chintyan and Ms. Grayce Scholt and the estate of Mrs. Eva Chastain, and Claire White Trust who supported the Art School Endowment, Annual Appeal, scholarships, collections, exhibitions, programs, capital projects, upgraded lighting, equipment, and accessibility improvements. And, to continue the legacy of giving of the Bishop-Miner family, a beautiful stained-glass window from the studio of Louis Comfort Tiffany was donated to the FIA through the special efforts of Fred Bellairs.

Our four annual events, Art on Tap, the Community Gala, Wine Tasting and The PARTY collectively had 180 monetary sponsors and 20 in-kind sponsors. There were 1,621 attendees with Applebee's returning as a signature sponsor and Tropi-Tan/My City Magazine as a new signature sponsor.

Last spring, the FIA began the 4, 3, 2 Endowment Campaign. The multi-year three phase Campaign focuses on these areas of endowment beginning with \$4 million for the Art School. To date, the Art School Endowment Campaign has 265 donors contributing \$2,763,250.

Capital projects this year included the completion of the second and third phases of the Roof Replacement Project at a final cost of \$249,387. The project included 14,400 square feet over the FIA's Library, Theater, Decorative Arts Gallery, the Ruth Mott Gallery of American Naive Art, Print Library, and the Bray Gallery plus 17,500 square feet over the Art School and Administration wing. Completing both the second and third phases this year saved more than \$40,000. The campaign is nearly complete with funding through grants from the Michigan Council for Arts and Cultural Affairs, the Whiting Foundation, Rotary Club of Flint, Community Foundation of Greater Flint, and contributions to the Raise the Roof Campaign. This year, we also improved accessibility with automatic door openers for the art school unisex/family restrooms.



President Lynne Hurand and Executive Director John B. Henry

Other noteworthy achievements in 2015 include offering 209 art classes with an enrollment of 1,580; providing educational programs serving an estimated 40,539 people; and, overall annual attendance estimated to exceed 148,000 by June 30th. Membership reached 2,204 representing 3,003 individuals this year, not counting an additional 1,492 College Town members.

The FIA is always developing new and dynamic ways to connect people with the visual arts. The greatest audience development and diversification opportunity of our time unquestionably lies in our ability to utilize the Internet and mobile technologies as programming tools. Nearly half a million people have accessed the FIA website, blog, and social networking pages this year. New technologies are also making it possible for experts from across the country to participate in FIA programs without traveling to Flint; visually impaired people to use a computer to enlarge an image or listen to an audio commentary; a hearing impaired person who relies on text and images to experience art; one of

the many people in our community (35%) who are functionally illiterate and rely on audio content to enhance the museum experience; or a visitor who simply wants to learn more about an object; the flexibility of digital media and the ease of making it available in multiple formats provides the greatest access to the multitude of concepts in our galleries.

Equally dedicated to the contemporary artistic mediums of today as it is to the historically significant objects in the collection, the FIA presented 17 exhibitions and installed 569 works. 66 artworks were added to our permanent collection, 6 works were lent to other museums, and 80 works—rarely or never before on view—were installed throughout the permanent collection galleries.

I know we speak for the entire staff in expressing our appreciation to all of you for your time, consideration, and hard work on the many challenges that face the FIA. It has been a privilege to work with all of you and we thank you for the opportunity to continue serving as your President and Director.

Lynne Hurand
President

John B. Henry
Executive Director

Exhibitions

About Face: Portraiture Through Time
5.3.14 – 7.20.14

Kathleen Gilje: Portraits of Paintings
5.3.14 – 7.20.14
Sponsored by Friends of Modern Art

Fantasy, Fiction, & Fact in Popular Illustration: 1750–1900
5.3.14 – 8.3.14
Sponsored by Founders Society

Cutting It Close: The Art of Carving
7.26.14 – 2.22.15

Private Viewing: The Art of Marthe Orant
8.9.14 – 9.28.14

Indelibly Yours: Smith Andersen Editions & the Tattoo Project
8.9.14 – 10.19.14

The Art of Video Games
10.25.14 – 1.18.15
Sponsored by Hurley Medical Center, Friends of Modern Art and Charles Stewart Mott Foundation

Labyrinth: The Circuitous Life of a Miniaturist
11.1.14 – 1.4.15
Sponsored by the Founders Society

James Perry Walker: The Preacher & His Congregation
1.17.15 – 4.4.15
Sponsored by the Founders Society

Common Ground: African American Art from the Flint Institute of Arts, the Kalamazoo Institute of Arts & the Muskegon Museum of Art
2.8.15 – 4.26.15

French Art Deco Enameled Glass from the Ed & Karen Ogul Collection
3.21.15 – 9.6.15

The Islander: Walter Anderson Watercolors
4.11.15 – 6.28.15
Sponsored by the Founders Society

Beauty, Passion & Bliss: 19th-Century Masterworks from the Dahesh Museum of Art
5.17.15 – 8.16.15
Sponsored by The Whiting Foundation
Organized by the Dahesh Museum of Art and the Flint Institute of Arts



From the exhibition *Beauty, Passion & Bliss*
Alexandre Cabanel
French, 1823–1889
and Adolphe Jourdan
French, 1825–1889
The Birth of Venus, ca. 1864
Oil on canvas
33 1/2 x 53 1/2 inches
The Dahesh Museum Collection

The Flint Institute of Arts strives to provide excellent and innovative exhibitions that inspire and enlighten our visitors. The goal of exhibitions is to enhance the visitor's understanding of the various thematic, aesthetic, and historical elements of a work of art. From video games to Academic paintings and from enameled glass to watercolors, this year the FIA presented a broad range of exhibitions that explored a variety of facets of the artistic realm, appealing to and allowing us to reach a broader audience than ever before.

This fiscal year, 20 changing exhibitions allowed visitors the opportunity to see almost 600 works of art, including paintings, works on paper, sculpture, decorative arts, and videos, all from various cultures and time periods. Because the FIA is the only institution of its kind in Flint, Genesee County, and the region north of the Detroit metropolitan area, it is important that exhibition programming explores a wide range of artistic concepts and diverse cultures.

In the summer, Marthe Orant's keen observations of daily life in early 20th-century Paris were featured in *Private Viewing: The Art of Marthe Orant*. Fifty-five paintings from the FIA's permanent collection displayed bustling streets, serene landscapes, and delicate still lifes by Orant and her contemporaries Édouard Vuillard and Pierre Bonnard. *Cutting It Close: The Art of Carving* explored how naturally occurring elements, like stone, can be transformed into aesthetically alluring works of art. The interconnectedness of tattoos and printmaking were showcased in the summer graphics exhibition, *Indelibly Yours: Smith Andersen Editions and the Tattoo Project*. Both tattoo artists and printmakers created works on paper in order to explore the kinship between the process of marking on skin and the practice of drawing on a printing plate.

From October to January, visitors got a chance to explore the 40-year evolution of video games as an artistic medium in *The Art of Video Games*. From early pioneers to contemporary designers, the exhibition included some of the most influential artists of gaming technology and design. Twenty gaming systems ranging from the Atari VCS to the Play Station 3 were on view and visitors had the opportunity to play five featured games on larger-than-life screens. The exhibition boasted three different lectures that focused on the connection between traditional art and video games. Guest Curator Chris Melissinos discussed the influence of art and popular culture on video games and gaming's impact on society. The

connection between games and interactive art in the age of technology was examined by Joseph Reinsel. Eric Cordier explored the perception of video and how it is recognized as an art form. In the graphics gallery, 115 works by Michigan artist Carl Demeulenaere were on view in *Labyrinth: The Circuitous Life of a Miniaturist*. This exhibition, arranged like a labyrinth or maze, took visitors on a visual and physical journey through complex themes like religion and culture.

Common Ground: African American Art from the Flint Institute of Arts, the Kalamazoo Institute of Arts, and the Muskegon Museum of Art highlighted some of the most important African American artists from the 19th century to present day. FIA Curator Tracee Glab's lecture gave an introduction to the exhibition by highlighting its major themes and artists. Included in the exhibition was the artwork of Chakaia Booker, who was a featured special guest at the opening. *James Perry Walker: The Preacher and His Congregation* introduced viewers to Reverend Louis Cole and his small Marshall County Mississippi church. James Perry Walker's large black-and-white photographs captured the preacher at church and at his home as well as members of the congregation.

The spring and summer months offered visitors the chance to explore *Beauty, Passion and Bliss: 19th-Century Masterworks from the Dahesh Museum of Art*. Fifty works of sculpture and painting illustrated the influence that the academic tradition had over artists. The exhibition featured works dealing with classical mythology, biblical subjects, landscape and animals, genre, and orientalism. In his lecture, Michael Farrell examined the importance of the Academic tradition in the 19th century and of the French Academy in particular. From collectors Ed and Karen Ogul, *Style Moderne: French Art Deco Enameled Glass from the Ed & Karen Ogul Collection* featured over 50 beautifully crafted items of Art Deco enameled glass. Ed Ogul gave a gallery talk about his collection and the history of French enameled glass. Walter Anderson's vibrant Horn Island watercolors reflected his attempt to capture the essence of nature and reveal humanity's connection to its vitality in *The Islander: Walter Anderson Watercolors*.

Videos

Visitation

7.1.14 – 7.31.14
by Suzan Pitt, 2011

The Way Things Go

8.1.14 – 8.31.14
by Peter Fischli & David Weiss, 1987

Interactive Video Game Arcade

10.1.14 – 1.31.15

In Ictu Oculi

2.1.15 – 2.28.15
by Greta Alfaro, 2009

Angel Soldier

3.1.15 – 3.31.15
by Lee Yongbaek, 2011

Bataille

4.1.15 – 4.30.15
by Nicolas Provost, 2003

Packing Pieces

Packing Art History, 2011
My Vanity, 2012
Packing for Delivery (Boy), 2015
5.1.15 – 6.30.15
by Asya Reznikov

The Fleckenstein Video Gallery is dedicated to featuring a new contemporary video artwork nearly every month of the year. The gallery is ideally suited for single-channel videos that are played on a continuous loop, and projected onto a 10 x 12 feet screen. The gallery currently features a region-free Blu-Ray player and a high definition projector which allows the FIA to display works in the highest quality available and opened up the opportunity to exhibit video art from around the world created in any and all formats.



Angel Soldier

Image copyright of the artist, courtesy of the Eli and Edythe Broad Art Museum at Michigan State University



Bataille

Image copyright of the artist, courtesy of Video Data Bank, www.vdb.org



Packing Pieces

Courtesy of the Artist and Nancy Hoffman Galleries, New York

Films

The FIA Film Program is intended to offer motion pictures that appeal to a broad and diverse audience in the local community. The program is comprised of a weekly schedule of film series and festivals in the FIA Theater. The main series, sponsored by the Friends of Modern Art and held on Fridays, Saturdays and Sundays, accounted for 43 titles over 40 weeks from September until June in 2014–15.

A total of 11,487 patrons—the highest yearly total ever—attended FIA film events in 2014–15. The FIA Film Society continued its support for the sixth year.

Among the films shown at FIA in 2014–15 were *Birdman*, the 2014 Academy Award winner for Best Picture; *Ida*, which won the Academy Award for Best Foreign Language Film; the Oscar-winning dramas *Whiplash* and *Still Alice*; and the Oscar-nominated *Foxcatcher*; *Mr. Turner*; *Two Days, One Night*; *Leviathan*; *Tangerines*; *Timbuktu*; and *Wild Tales*. *Whiplash* was the season's top title in terms of attendance, with 511 patrons for three weekend shows.

An occasional Thursday night “Best of FOMA” film series supplemented the weekend series, providing viewers the opportunity to see classic art films or view films shown at the FIA in previous years.

In addition, the FIA partnered with a local group to offer its first Bollywood Film Festival, a series of six movies spotlighting India and Indian people around the globe, and in connection with the popular exhibition *The Art of Video Games*, 16 free screenings of the documentary *Video Games: The Movie* were presented.



Film Program

The FIA Theater screened these films in the main Friends of Modern Art series:

September

Third Person
The Bachelor Weekend
Herb & Dorothy 50X50
Hateship Loveship

October

A Summer's Tale
Le Chef
Chinese Puzzle
Venus in Fur
Ida

November

Supermensch
A Most Wanted Man
The Trip to Italy
Life Itself

December

The Last of Robin Hood
Calvary
Finding Vivian Maier

January

Ivory Tower
Love Is Strange
The Disappearance of Eleanor Rigby
A Five Star Life
The Blue Room

February

Dear White People
Birdman
Whiplash
The Skeleton Twins

March

Beloved Sisters
Foxcatcher
Two Days, One Night
Mr. Turner

April

Gett: The Trial of Viviane Amsalem
Academy Award Nominated Shorts
Force Majeure
The Search for General Tso

May

Still Alice
Leviathan
5 to 7
Tangerines
Red Army

June

Timbuktu
Wild Tales

These films were shown in the “Best of FOMA” series:

September

Herb & Dorothy

October

Godzilla: The Japanese Original

February

The Graduate

These films were shown in the Bollywood Film Festival:

March

Jadoo

Siddharth

Dilwale Dulhania le Jayenge

The Hundred Foot Journey

April

Water

Patang

FOMA series are sponsored by:

Friends of Modern Art
Guardian Alarm
Merrill Lynch
Michigan Public Radio

Special Events

FIA Film Society Preview

August 27. Ed Bradley and Michael Rucks presented a preview of the Friends of Modern Art series with film clips. 122 people attended.

Video Games: The Movie screenings

October 25 through January 17. Free screenings of a documentary about the history of video games were presented in connection with the FIA exhibition *The Art of Video Games*. 602 people attended.

Arabic Art & Film Night

April 26. In partnership with Flint’s Arab American Heritage Council, the Michigan-made documentary *We Are Not White* was shown at the museum in an event that also included an art exhibition and slam poetry. 70 people attended.

Karen Schneider Jewish Film Festival of Flint

May 3-7. In the 11th annual local festival—a spinoff of the Detroit-based Lenore Marwil Jewish Film Festival—four feature-length films and two short films were shown in a co-sponsorship with the Flint Jewish Federation. The films screened were *The Outrageous Sophie Tucker*, *God’s Slave*, *Hunting Elephants*, *Little White Lie*, *The Secret Ingredient*, and *When Comedy Went to School*. During a preview event, the movie *Above and Beyond* was shown. 566 people attended in all.

Film Society

The 2014–15 season marked the sixth year of the FIA Film Society, a group formed to increase interest in, and funding for, the film program.

By season’s end, the society included 81 members and sponsors. Most of them were at the basic membership level of \$100, which granted the donor 36 tickets to FOMA films, listings in the FIA Members Magazine and Annual Report, and access to monthly e-mailed newsletters about upcoming movies. Patrons who chose to use all or most of their 36 tickets for the \$100 level saved money over paying the standard admission fees which proved to be a good incentive for people to join.

Higher sponsorship levels gained donors listings on screen before each film presentation, extra tickets and a presence on the FIA website.

Acquisitions

The Flint Institute of Arts’ permanent collection is a resource for creating exhibitions and developing educational programs for a diverse public including scholars and students.

The growth of the collection is supported by gifts from civic-minded individuals who donate funds and works of art to the permanent collection. In addition, the Curatorial Department and the Collections Committee work together to identify strategies and seek new funds for the acquisition of artworks that meet museum objectives and the expectations of an ever inquisitive and knowledgeable public. The staff conducts work essential to the care and management of the collection, including research, documentation, preservation, presentation, and interpretation.



Jean-Baptiste Lemoyne
French, 1704–1778
Henri-Claude, Comte D’Harcourt,
1760
Terracotta
22 1/4 x 15 1/4 x 12 inches
Gift of the Arthur M. Sackler
Foundation, New York, 2014.20

Artist Unknown
Chinese, Northern Wei Dynasty,
386–535
Figure: A warrior on horseback,
n.d.
Gray body, painted
10 13/16 x 2 13/16 x 8 inches
Gift of the Arthur M. Sackler
Foundation, New York, 2014.21

Artist Unknown
Chinese, Tang Dynasty, 618–907
**Pillow with painted decoration of
three flowers and vegetation**, n.d.
Stoneware
3 3/16 x 5 3/8 x 4 inches
Gift of the Arthur M. Sackler
Foundation, New York, 2014.22

Artist Unknown
Chinese
Head of Bodhisattva, ca. 500
Limestone
16 x 8 1/2 x 3 3/4 inches
Gift of the Arthur M. Sackler
Foundation, New York, 2014.23

Artist Unknown
Chinese, Ming Dynasty, n.d.
Head of Buddha, 1368–1644 ◀
Cast iron, paint
18 1/2 x 13 x 13 inches
Gift of the Arthur M. Sackler
Foundation, New York, 2014.24

Artist Unknown
Chinese, Shang Dynasty,
(1600–1046 BCE or Zhou Dynasty
(1046–256 BCE))
Taotie Mask with Incised Designs,
n.d.
Bronze
8 x 8 x 1/8 inches
Gift of the Arthur M. Sackler
Foundation, New York, 2014.25

Artist Unknown
Chinese, Shang Dynasty, 1600–
1046 BCE
**Double-Owl Vessel (YOU) with
Lid**, n.d.
Bronze
8 x 8 x 6 1/4 inches
Gift of the Arthur M. Sackler
Foundation, New York, 2014.26

Artist Unknown
Chinese, Early Western Zhon
Dynasty, 1046–256 BCE
**Vessel (GU) with a body
decorated with conical bosses
and two taotie-head handles**, n.d.
Bronze
6 1/4 x 9 1/4 x 12 3/4 inches
Gift of the Arthur M. Sackler
Foundation, New York, 2014.27

Al Held
American, 1928–2005
Cubes, 1969
Lithograph on paper
28 5/8 x 24 5/8 inches
Gift of Dr. Harry and Margaret
Meisner, 2014.28

Vincent Longo
American, b. 1923
Frontal, 1970
Etching on paper
23 5/8 x 17 9/16 inches
Gift of Dr. Harry and Margaret Meisner, 2014.29

Andrew Dasburg
American, b. France, 1887–1979
Ranchos Valley I, 1974
Lithograph on paper
20 1/2 x 24 3/4 inches
Gift of Dr. Harry and Margaret Meisner, 2014.30



Harold Edgerton
American, 1903–1990
Bullet Through King of Diamonds, 1964 ▲
Dye transfer print
7 5/8 x 10 inches
Gift of Arlette and Gus Kayafas, 2014.31

Harold Edgerton
American, 1903–1990
Moving Skip Rope, 1952
Dye transfer print
6 1/4 x 9 11/16 inches
Gift of Arlette and Gus Kayafas, 2014.32

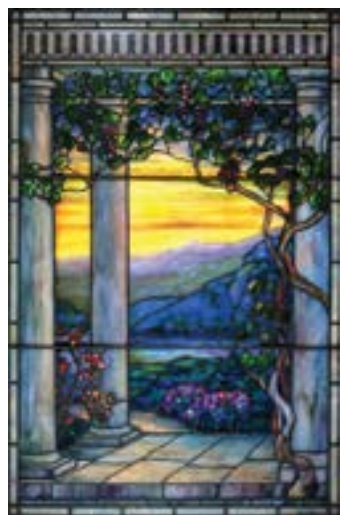
Adolph Gottlieb
American, 1903–1974
Germination III, 1969
Lithograph on paper
22 1/4 x 30 inches
Gift of the Estate of Herbert J. Booth, 2014.33

Robert Rauschenberg
American, 1925–2008
Hand-Drawn, Light-Printed, 1980
Off-set lithograph on mylar
23 x 18 inches
Gift of Max Lepler and Rex L. Dotson, 2014.34

Louis Comfort Tiffany
American, 1848–1933
Stained Glass Window, n.d. ►
Leaded Favrite glass
47 3/8 x 31 1/8 inches
Gift of Fred Bellairs, Robert Bellairs, Mary-Linn Benning, Bill Bishop, Bruce Bishop, Elizabeth Bishop, Falding Bishop, Russ Bishop, Katie Kutschinski, Barbara Miner, Bruce Miner, Doug Miner, Fritz Miner, Beth Osborne and Barbara Spiess, 2014.35

Kamba
Kenya, Africa
Maternity Group, n.d. ►
Wood, metal, beads
12 1/2 x 3 1/2 x 4 1/2 inches
Museum purchase with funds from the Collection Endowment, 2014.36

Dogon
Mali, Africa
Granary Door, n.d.
Wood and metal
17 1/4 x 12 x 1 3/4 inches
Gift of Susan Steiner Bolhouse, 2014.37



Ruth Weisberg
American, b. 1942
Neverland, 1976
Lithograph on paper
22 x 31 7/8 inches
In memory of Nancy Rajala, 2014.38

Cecil Beaton
English, 1904–1980
Untitled (Portrait of Mrs. Thelma C. Foy), n.d.
Gelatin silver print
12 1/2 x 11 inches
Gift of Mary Davison Rice, 2014.39

Kees Van Dongen
Dutch, 1877–1968
Arc de Triomphe, 1949
Lithograph on paper
22 1/4 x 15 inches
Gift of the Estate of Herbert J. Booth, 2014.40

Maurice Utrillo
French, 1883–1955
Untitled, n.d.
Lithograph on paper
8 x 6 1/2 inches
Gift of the Estate of Herbert J. Booth, 2014.41

Guy Palazzola
American, 1919–1978
Tribal Memory, ca. 1950
Acrylic on canvas
24 x 30 inches
Gift of the Estate of Herbert J. Booth, 2014.42

Maurice Merlin
American, 1909–1947
No Work Today, 1937 ►
Egg tempera on canvas mounted on wood
24 x 30 1/4 inches
Gift of Peter Merlin, 2014.43

Maurice Merlin
American, 1909–1947
No Work Today, 1939
Lithograph on paper
9 13/16 x 14 inches
Gift of Peter Merlin, 2014.44

April Gornik
American, b. 1953
Forest Light, 2014
Lithograph on paper
20 x 27 inches
Commissioned for the Flint Print Club, 2014.45

Pawel Borowski
Polish, b. 1969
The Navigator's Return, 2003
Hot worked, laminated and carved glass
81 x 22 x 18 inches
Gift of Mary Hale and Blair Corkran, 2015.1

Artist Unknown
Chinese, Ming Dynasty, 1368–1644
Equestrian Figure with Two Attendants, n.d.
Ceramic
19 1/2 inches high (Equestrian Figure)
13 inches high (Attendant)
12 1/2 inches high (Attendant)
Gift of Nan Gillies Lower, 2015.2



International Silver Company
American
"Flagship" Flatware (35 piece set), ca. 1936
Silverplate
Dimensions vary
Gift of John and Marilyn Kopp, 2015.3

Robert Gniewek
American, b. 1951
Rialto, 2001
Oil on linen
14 x 20 inches
Gift of James Pearson Duffy, 2015.4

Jaye Schlesinger
American
Biker in Window, 2008
Pastel on paper
18 x 20 inches
Gift of James Pearson Duffy, 2015.5

Howard Bond
American, b. 1931
T.A.C. 16 (from Portfolio XXIII: Enigma), 2010
Gelatin silver print
13 x 9 1/4 inches
Gift of Howard Bond, 2015.6

Howard Bond
American, b. 1931
E.M.I. 7 (from Portfolio XXIII: Enigma), 2010
Gelatin silver print
13 1/4 x 8 7/8 inches
Gift of Howard Bond, 2015.7

Howard Bond
American, b. 1931
E.M.I 8 (from Portfolio XXIII: Enigma), 2010
Gelatin silver print
13 x 9 1/2 inches
Gift of Howard Bond, 2015.8

Howard Bond
American, b. 1931
M.A.S. 29 (from Portfolio XXIII: Enigma), 2010
Gelatin silver print
9 1/2 x 13 1/8 inches
Gift of Howard Bond, 2015.9

Howard Bond
American, b. 1931
R.T.A. 22 (from Portfolio XXIII: Enigma), 2010
Gelatin silver print
10 x 12 inches
Gift of Howard Bond, 2015.10

Howard Bond
American, b. 1931
M.A.S. 32 (from Portfolio XXIII: Enigma), 2010
Gelatin silver print
9 3/4 x 12 1/2 inches
Gift of Howard Bond, 2015.11

Howard Bond
American, b. 1931
T.A.C. 8 (from Portfolio XXIII: Enigma), 2010
Gelatin silver print
9 1/2 x 13 1/8 inches
Gift of Howard Bond, 2015.12

Howard Bond
American, b. 1931
A.B.T. 3 (from Portfolio XXIII: Enigma), 2010
Gelatin silver print
9 1/8 x 13 inches
Gift of Howard Bond, 2015.13

Howard Bond
American, b. 1931
M.A.S. 34 (from Portfolio XXIII: Enigma), 2010
Gelatin silver print
9 1/2 x 12 5/8 inches
Gift of Howard Bond, 2015.14

Howard Bond
American, b. 1931
M.A.S. 26 (from Portfolio XXIII: Enigma), 2010
Gelatin silver print
13 1/4 x 10 inches
Gift of Howard Bond, 2015.15

Josef Albers
American, b. Germany, 1888–1976
Variant II (from the portfolio Ten Variants), 1967
Screenprint on paper
17 x 17 inches
Gift of Dr. Seymour and Barbara K. Adelson, 2015.16

Josef Albers
American, b. Germany, 1888–1976
Variant IV (from the portfolio Ten Variants), 1967
Screenprint on paper
17 x 17 inches
Gift of Dr. Seymour and Barbara K. Adelson, 2015.17

Alex Diamond
American, b. 1990
Inverse Slugs Mate, 2014
Watercolor on paper
21 1/2 x 15 inches
Gift of the artist, 2015.18

Stanley Casselman
American, b. 1963
Luminor 4-25, 2014
Synthetic polymer on canvas
49 x 42 inches
Museum purchase with funds from the Collection Endowment, 2015.19

James Chatelain
American, b. 1947
Untitled, 1988
Oil on canvas
23 3/4 x 23 3/4 inches
Gift of Andronike Tsagaris and John Hilberry, 2015.20

Gordon Newton
American, b. 1948
Untitled, n.d.
Graphite, paint, pencil on paper
11 x 18 inches
Gift of Andronike Tsagaris and John Hilberry, 2015.21

Gordon Newton
American, b. 1948
Untitled (Warfare #27), 1982
Oil stick on paper
30 x 40 inches
Gift of Andronike Tsagaris and John Hilberry, 2015.22

Jane Hammond
American, b. 1950
Presto, 1991
Color lithograph with silkscreen and collage on paper
39 3/8 x 25 5/8 inches
Gift of Andronike Tsagaris and John Hilberry, 2015.23

Jane Hammond
American, b. 1950
Untitled (201, 83, 214, 146), 1990
Oil on linen
76 x 70 inches
Gift of Andronike Tsagaris and John Hilberry, 2015.24

Joseph Friebert
American, 1908–2002
Farmyard, 1937
Charcoal on paper
8 1/2 x 11 inches
Gift of the Joseph and Besty Ritz Friebert Family Partnership and Kohler Foundation, Inc., 2015.25

Joseph Friebert
American, 1908–2002
Country Road, n.d.
Graphite on paper
8 1/2 x 11 inches
Gift of the Joseph and Besty Ritz Friebert Family Partnership and Kohler Foundation, Inc., 2015.26

Joseph Friebert
American, 1908–2002
East State St., 1945
Brown conte crayon on paper
8 1/4 x 9 3/4 inches
Gift of the Joseph and Besty Ritz
Friebert Family Partnership and
Kohler Foundation, Inc., 2015.27

Joseph Friebert
American, 1908–2002
Door County, 1938
Charcoal on paper
8 3/4 x 12 inches
Gift of the Joseph and Besty Ritz
Friebert Family Partnership and
Kohler Foundation, Inc., 2015.28

Joseph Friebert
American, 1908–2002
Milwaukee, East Side, 1938
Red conte crayon and wash on
paper
9 x 11 1/2 inches
Gift of the Joseph and Besty Ritz
Friebert Family Partnership and
Kohler Foundation, Inc., 2015.29

Joseph Friebert
American, 1908–2002
Farm Landscape, ca. 1940s
Charcoal on paper
9 x 13 3/4 inches
Gift of the Joseph and Besty Ritz
Friebert Family Partnership and
Kohler Foundation, Inc., 2015.30

Joseph Friebert
American, 1908–2002
Landscape, 1941
Charcoal on paper
11 x 14 inches
Gift of the Joseph and Besty Ritz
Friebert Family Partnership and
Kohler Foundation, Inc., 2015.31

Joseph Friebert
American, 1908–2002
Buildings on Street, ca. 1940s
Lithograph on paper
7 x 8 3/4 inches
Gift of the Joseph and Besty Ritz
Friebert Family Partnership and
Kohler Foundation, Inc., 2015.32

Joseph Friebert
American, 1908–2002
Trees, 1939/40
Linoleum cut on paper
4 1/2 x 5 1/2 inches
Gift of the Joseph and Besty Ritz
Friebert Family Partnership and
Kohler Foundation, Inc., 2015.33

Joseph Friebert
American, 1908–2002
Door County, 1938
Charcoal on paper
13 3/4 x 16 3/4 inches
Gift of the Joseph and Besty Ritz
Friebert Family Partnership and
Kohler Foundation, Inc., 2015.34

Joseph Friebert
American, 1908–2002
Wisconsin Farm, 1940
Charcoal on paper
13 3/4 x 16 3/4 inches
Gift of the Joseph and Besty Ritz
Friebert Family Partnership and
Kohler Foundation, Inc., 2015.35

Joseph Friebert
American, 1908–2002
Ellison Bay, 1938
Charcoal on paper
13 3/4 x 16 3/4 inches
Gift of the Joseph and Besty Ritz
Friebert Family Partnership and
Kohler Foundation, Inc., 2015.36

Joseph Friebert
American, 1908–2002
Walnut Street Bridge, 1940
Conte crayon, pen and ink on paper
11 x 15 inches
Gift of the Joseph and Besty Ritz
Friebert Family Partnership and
Kohler Foundation, Inc., 2015.37

Joseph Friebert
American, 1908–2002
Going Home, 1999
Oil on Masonite
15 3/4 x 16 inches
Gift of the Joseph and Besty Ritz
Friebert Family Partnership and
Kohler Foundation, Inc., 2015.38

Joseph Friebert
American, 1908–2002
Farm Scene, ca. 1940s
Charcoal on paper
13 1/4 x 15 3/4 inches
Gift of the Joseph and Besty Ritz
Friebert Family Partnership and
Kohler Foundation, Inc., 2015.39

Joseph Friebert
American, 1908–2002
Ellison Bay, 1982
Oil on canvas
31 x 33 inches
Gift of the Joseph and Besty Ritz
Friebert Family Partnership and
Kohler Foundation, Inc., 2015.40

Joseph Friebert
American, 1908–2002
Deb with Boa, 1979
Charcoal on paper
25 1/2 x 19 1/2 inches
Gift of the Joseph and Besty Ritz
Friebert Family Partnership and
Kohler Foundation, Inc., 2015.41



Joseph Friebert
American, 1908–2002
Self-portrait with Cigarette
(Landscape on verso), late 1940s ◀
Oil on Masonite
24 x 17 inches
Gift of the Joseph and Besty Ritz
Friebert Family Partnership and
Kohler Foundation, Inc., 2015.45

Joseph Friebert
American, 1908–2002
Jefferson and Wells, 1940
Charcoal on paper
7 3/4 x 9 3/4 inches
Gift of the Joseph and Besty Ritz
Friebert Family Partnership and
Kohler Foundation, Inc., 2015.42

Joseph Friebert
American, 1908–2002
Center Street, ca. 1938
Charcoal on paper
13 3/4 x 16 3/4 inches
Gift of the Joseph and Besty Ritz
Friebert Family Partnership and
Kohler Foundation, Inc., 2015.43

Loans

The Flint Institute of Arts believes an effective way to enhance its reputation as an important cultural institution is to lend works of art from its permanent collection to other museums. Lending art from the permanent collection promotes collegial relationships between museums, and provides national and international audiences exposure to works of art from the FIA's outstanding permanent collection. In addition, the FIA also borrows works from other museums, galleries, and collectors to supplement its permanent collection and exhibitions.

Loans to the Permanent Collection

The following artwork was on loan to the FIA's permanent collection:

11.5.14 – 8.7.15

Camille Pissarro
French, 1830–1903
Le Jardin des Tuileries et le Pavillon de Flore, 1900 ▼
Oil on canvas
13 1/4 x 16 1/4 inches
Collection of Linda J. LeMieux, daughter
of Mr. and Mrs. Donald E. Johnson, Sr.



Loans from the Permanent Collection

The following artworks were on loan from the FIA's permanent collection to the following exhibitions:

Exalted Nature: The Real & Fantastic World of Charles Burchfield

8.23.14 – 11.16.14
Brandywine River Museum
 Chadds Ford, Pennsylvania

12.12.14 – 2.22.15
Burchfield Penney Art Center
 Buffalo State College
 Buffalo, New York

Charles E. Burchfield
 American, 1893–1967
Nighthawks at Twilight, 1917–49
 Watercolor on paper
 34 3/8 x 48 1/2 inches
 Gift of the Viola E. Bray Charitable Trust, 1964.3

Charles E. Burchfield
 American, 1893–1967
North Woods in Spring, 1951–64
 Watercolor on paper
 56 x 40 inches
 Bequest of Mary Mallery Davis, 1990.31

Morrice & Lyman in the Company of Matisse

10.10.14 – 1.4.15
McMichael Canadian Art Collection
 Vaughan, Ontario, Canada

Henri Matisse
 French, 1869–1954
Petite Odalisque, draperie verte, 1921
 Oil on canvas
 9 1/2 x 15 1/4 inches
 Gift of Mrs. William B. Heaton, daughter of Mr. and Mrs. Donald E. Johnson, Sr., 2006.62

From Van Gogh to Kandinsky: Impressionism to Expressionism

10.11.14 – 1.25.15
Montreal Museum of Fine Arts
 Montreal, Quebec, Canada

Alexej von Jawlensky
 Russian, 1864–1941
Portrait of Marie Castel (Landscape on verso), 1906
 Oil on board
 20 13/16 x 19 3/8 inches
 Gift of Mr. and Mrs. Jerome O. Eddy, 1940.8



Sargent: Portraits of Artists & Friends

6.30.15 – 10.4.15
Metropolitan Museum of Art
 New York, New York

John Singer Sargent
 American, 1856–1925
Garden Study of the Vickers Children, 1884 ◀
 Oil on canvas
 54 1/2 x 36 inches
 Gift of the Viola E. Bray Charitable Trust via Mr. and Mrs. William L. Richards, 1972.47

William Beckman: Drawings, 1967–2013

10.24.14 – 2.1.15
The Arkansas Arts Center
 Little Rock, Arkansas

William Beckman
 American, born 1942
Portrait Study of Gregory Gillespie, 1993
 Charcoal on paper
 29 x 25 inches
 Gift of the American Academy of Arts and Letters, New York; Hassam, Speicher, Betts and Symons Fund 1996, 1996.1

Deaccessions

Deaccessioning is the formal removal of a work from a museum's permanent art collection. Deaccessioning is an important part of collections management and a way for a museum to refine its collections. The FIA takes exceptional care when accepting works, however, under special circumstances it may be appropriate for a work to become a candidate for deaccessioning.



Alexander Calder
 American, 1898–1976
The White Sieve, 1963
 Polychromed sheet metal and wire
 13 x 21 x 8 inches
 Bequest of Mary Mallery Davis, 1990.54



Cara Fletcher
 American
Fletcher's Nantucket House and Barn, ca. 1960
 Mixed media
 40 x 85 x 25 inches (House)
 22 x 60 x 24 inches (Barn)
 Gift of Mrs. Charles H. Fletcher, 1975.39

Art School

The FIA Art School is dedicated to the enrichment of the community through academic exposure to the visual arts. Highly qualified faculty offer instruction in drawing, painting, photography, digital arts, animation, cartoon and character design, fibers, glass mosaic, ceramics, sculpture, and early childhood art courses. Since 1928, the Art School has operated continuously, helping students develop a wide range of artistic goals and skill levels. Programs are designed to support the mission of the FIA with dynamic curricula that engages students and the community through creative processes, studio experiences, and gallery exhibitions.

Programming

The Art School hosted nine opening receptions in the Bishop Gallery this past year totaling 487 attendees. Seven exhibitions featured the work of Art School students, including artwork from the Pre-College Portfolio Development Program, Art Camp, and studio classes. The remaining two exhibitions highlighted faculty work. Eleven one-day studio soirees were held in the Art School through which 135 participants experienced 3-hour workshops sampling mediums including ceramics, acrylic painting, and glass mosaic. The Art School continued hosting free family activities as a means of engaging the community in free art-based projects. A total of 3,907 adults and children attended these events that included the Genesee County Fair, the Cultural Center's Firefly Walk and Holiday Walk, and several in-house events held within the FIA. Youth members were invited to three special activities led by early childhood specialist, Rebecca Andrus. Forty-three members between the ages of 5 and 12 created a Repousse Sketchbook, Pop-Art Posies, and Calder's Big Fish. The FIA collaborative *Healing Through Art Therapy* program with McLaren Flint continued generating 68 encounters during the 2014–2015 fiscal year with art therapist Gail Singer. The Food Bank of Eastern Michigan collaborated with the Art School to produce nearly 1,700 bowls for the Food Bank's annual Empty Bowls Project. In conjunction with *The Art of Video Games* exhibition, the Art School offered three specialized workshop for kids ages 10–13 focusing on the fundamentals of coding, programming, and server development; 21 students participated. In June, Art School Assistant Director Jeff Garrett accompanied 14 Portfolio Development students to the Detroit Institute of Arts to explore the collection. Twelve high school freshmen were accepted into the Pre-College Portfolio Development Program and began the



three-year program with Drawing I in February. The 4th annual Lego Competition was held at the FIA in March. Entered into this year's competition were 146 Lego sculptures with 20 awards being given out in categories including Most Creative, Most Technically Challenging, People's Choice, and Honorable Mention. With support from Dr. David Taylor, Dr. Shawn Reiser, and the Flint Area School's Credit Union, this year's Lego event exceeded expectations and logged a total of 1406 guests.

Enrollment

Summer 2014, 467 students
Fall 2014, 605 students
Winter/Spring 2015, 575 students

Scholarships

The Art School granted \$20,175 in scholarships for the 2014–15 FY to 145 students (90 youth scholarships and 55 adult scholarships). There was a 20% increase in funds granted in comparison to the 2013–14 FY of \$16,375.

Education

The Flint Institute of Arts is committed to promoting understanding and enjoyment of the visual arts through high quality art education programs. We believe art is a vital component of life and that learning is a lifelong process. Our educational programming provides dynamic and enriching experiences for people of all ages and with all levels of familiarity with art.

Our programs invite people to gain greater understanding and enjoyment of the FIA's outstanding permanent collection and special exhibitions. They are designed to present learning opportunities that are rich in content and stimulate imagination, thought and creativity.

Education programs served a total of 45,797 during the fiscal year.

K-12 Programs

Gallery and studio programs comprised 54% of educational programming and served 26,950 K-12 and homeschool students. Twenty-nine percent participated in gallery lessons, 27% in studio activities, 42% in outreach programs, and 2% in self-guided visits/other. Seventy-five percent of students attended public schools, 9% private schools, and 15% homeschool/charter schools, with 88% of the schools located in Genesee County. The remaining 12% of schools served were from Kent (0.1%), Lapeer (0.2%), Oakland (2%), Saginaw (0.78%), Sanilac (0.03%), St. Clair (0.36%), St. Joseph (0.06%), Tuscola (0.5%), Washtenaw (0.12%), Wayne (0.19%); and 7.66% of participants included groups with students from a mixture of counties.

Public Programs

Consistent marketing through social media, provided by the Educational Media Coordinator, and mail and email marketing kept attendance strong. Public programs served 15,347 people during fiscal year 2014–15.

Docent Program

Docents are integral to the Education department. Fifteen volunteers were involved in the docent program in fiscal year 2014–15. They participated in intensive training sessions from September through May. Docents assisted with 612 gallery and studio programs and served 9,185 people, resulting in 1,606 hours of service.

Active Docents

Oya Agabigum
Lavonne Bomeli
Tom Butts
Susan Damone
Kathy George
Kim Giacchina
Alfreda Harris
Lynne Hurand
Belle McPhee
Jeanette Nassif
Walt Russ
Kathy Weiner

Docents in Training

Patty Duffy
Christine Jones
Kate Nichels

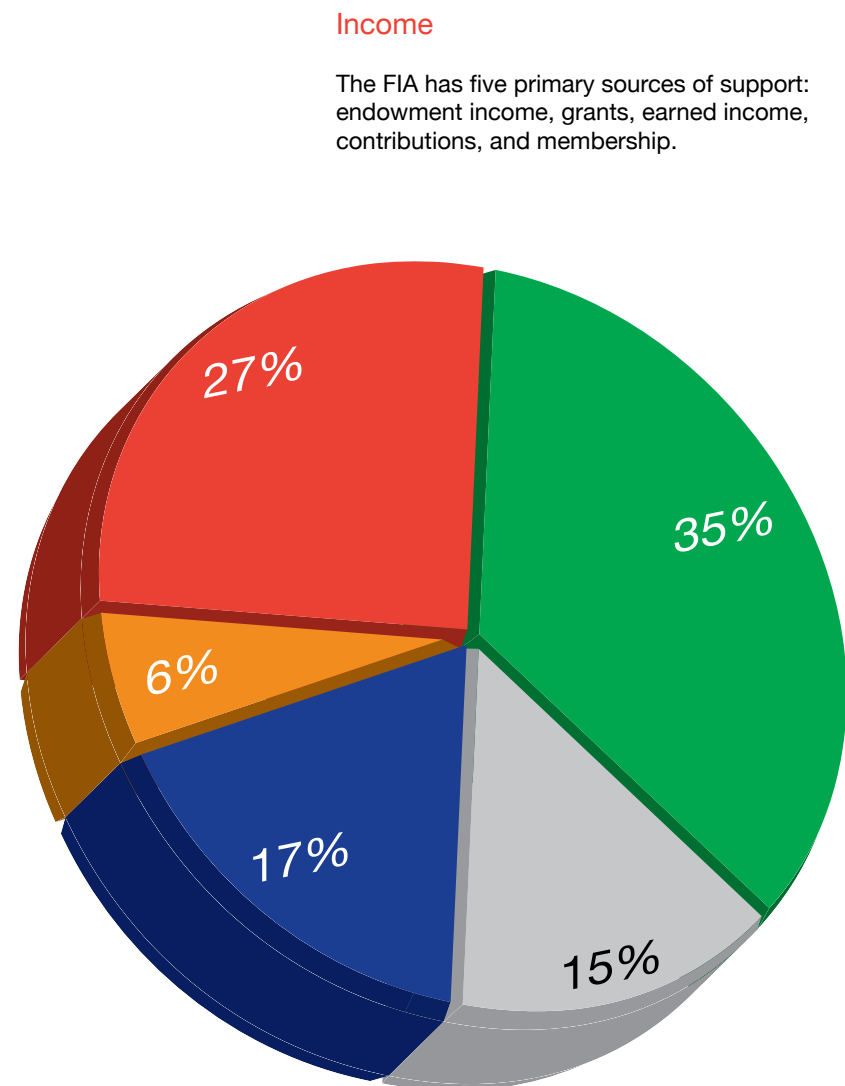


Development

The Development Department is responsible for all areas of funding for the FIA. This includes support through endowment growth, grants, earned income, contributions, and membership.

In addition, the department manages audience development, collaborative initiatives, facilities use, marketing, special events, social media and the website. The department also organizes a broad and diverse volunteer base.

- Endowment Income
- Grants
- Earned Income
- Contributions
- Membership



Endowment Income

Both restricted and unrestricted, endowment funds support general operations, exhibitions, programs, art acquisition, art conservation, scholarships, lectures, and membership initiatives. As of June 30, 2015 the endowment funds totaled \$34,664,148 contributing 27% of the annual income. Unrestricted donations in the form of planned gifts and bequests are traditionally allocated to endowment. Please see pages 24 for this fiscal year's listing.

Grants

The FIA receives grant awards from foundations, community organizations, businesses, corporations and the state and federal governments. Revenue from grants represents 35% of the FIA's annual income. The FIA receives support from two auxiliary groups, the Founders Society and Friends of Modern Art.

Earned Income

Income generated from sales, tuition, facility rentals, special events, and admissions provided 15% of the FIA's operating income.

Contributions

Sponsorships, annual appeal gifts, memorials, donations commemorating anniversaries and birthdays, and funding of specific programs or events, represents 17% of the FIA's annual income.

Membership

Membership dues represent 6% of the FIA's annual income. Membership levels begin at \$20 annually for a Youth (ages 2.5-12) or a student (ages 13+) and progresses to \$1,000+ annually for a Rubens membership. Basic benefits are enjoyed by all, and higher level donors receive extended benefits (such as reciprocal membership privileges to over 650 museums nationwide) at the Sustainer level (\$100) and above. The Rubens Society generates more than \$100,000 to the budget and Society members are invited to three exclusive events throughout the year. The FIA's Art school members receive a discount on art classes. Of new members who joined the FIA, 28.5% joined through the Art school.

The Flint Print Club was established in 2007. The club is limited to 100 members who, after first becoming a member of the FIA at the Family level (\$50) or above, receive a commissioned print by a

critically acclaimed artist. The club is dedicated to the connoisseurship, the pursuit of personal collecting, and the purchase of prints to augment the FIA's collection.

The FIA College town initiative provides free memberships to students at Kettering University, University of Michigan-Flint, Mott Community College, and Baker College. Students receive many of the basic benefits and receive invitations and other announcements.

Please see pages 30-39 for this fiscal year's membership listing.

Donors to and members of the FIA provide the foundation for all of the Institute's activities.



Members preview for the exhibition *Common Ground: African American Art from the Flint Institute of Arts, the Kalamazoo Institute of Arts, and the Muskegon Museum of Art*

Special Events & Facility Rentals

The Flint Institute of Arts offers an active schedule of events for members and the general public throughout the year including Holiday Walk, the Founders Society's First Frost Arts & Fine Crafts Fair, and the Friend's of Modern Art's Annual Art Fair. Annual fundraisers at the FIA are diverse and appealing to all demographics. Each event has a committee of devoted and hardworking volunteers that are active in all areas of planning. From Beer Tasting and Wine Tasting to the Community Gala and The Party, the FIA continues to create a diverse palette of events to raise funds for the museum and engage the ever-growing community.

The Bray Series

3.21.15 & 4.10.15

Attendance: 176 & 166 *respectively*

Sponsor: Viola E. Bray Charitable Trust

7th Annual Art on Tap Beer Tasting

9.13.14

Attendance: 478

Sponsors: Applebee's Grill & Bar; Al Serra Auto Plaza; American Electric; Applegate Chevrolet; Arbor Brewing Co.; Arby's; Walter Barkey MD; Arcadia Brewing Co.; Beef & Barley; Bell's Brewing Co.; Bishop International Airport; Brown & Brown of Michigan, Inc.; Cars108; Cellar Brewing Co.; Community Podiatry Group, Drs. Reiser & Taylor; Cranker's Brewing; Culligan; Dark Horse Brewing Co.; Dee Cramer Inc.; Jim & Janey Dillard; Don Franco Salons; Pete & Sally Doneth; Dragonmead Microbrewery; Harry & Kathy Eiferle; ELGA Credit Union; Michael B. Evanoff; Fabiano Brothers Inc.; Fifth Third Bank; John & Janie Fleckenstein; Flint Welding Supply Co.; Founder's Brewing Co.; Frankenmuth Brewing Co.; Kevin Gaffney, MD; Genesee Packaging; Graff Truck Centers, Inc.; Griffin Claw Brewing Co.; Guardian Mortgage Co., Inc.; Hideout Brewing Co.; Hot Rods Unlimited; John P. O'Sullivan Distributing, Inc.; Jolly Pumpkin Artisanal Ales; Scott B. Karlene, MD; Kelly-Younger Interiors; Kettering University; Ketzler's Florist; Mark H. Knight, DDS; Kuhnhehn Brewing Co.; Landaal Packaging Systems; Latitude 42 Brewing Co.; Lewis & Knopf, CPAs, PC; Mark Mikolajczak; Motor City Brewing Works; Mountain Town Brewing Co.; New Holland Co.; North Peak Brewing Co.; Olmsted Associates, Inc.; OutFront Media; Right Brain Brewery; Rochester Mills Brewery; Saugatuck Brewing Co.; Schmohz Brewing Co.; Peter Serra, Serra Benefits Group; Raymond James; Daniel J. Ryan, MD, PC; Sapphire Blue Investment Partners; Siwek Construction Co.; Spartan Printing; Special Occasions; Ken & Linda Steibel; Helene Streich; Susie Steuwer & Randy Piper; Tapistry Brewing Co.; The Torch Bar & Grill; Tom & DeAnn Tonwsend; Tri-City Brewing Co.; WCMU Public Broadcasting; Wheeler Party Rental; Whigvile Market/Short's Brewing Co.; Doug & Dawn Wyrwicki; Yeo & Yeo CPAs & Business Consultants.

24th Annual Thompson Lecture

10.7.14

Attendance: 238

Sponsor: Dr. & Mrs. Jack W. Thompson Lecture Fund

9th Annual First Frost Arts & Fine Crafts Fair

10.18.14 – 10.19.14

Attendance: 2,140

Sponsors: Mary Coleman, Fratz Consignment; Gerych's Distinctive Flowers & Gifts; Martha Olivia Design, LLC; McLaren Flint; Susan Philpott-Preketes, Attorney at Law; Ernelle Taylor; Tummala Charitable Foundation; Zito Construction Co.

Sheppy Dog Fund Lecture

11.13.14

Attendance: 151

Sponsor: Dr. Alan Klein

Holiday Walk

12.2.14

Attendance: 3,688

Sponsor: The Children's Office, Dr. Kienan Murphy

8th Annual Community Gala

2.7.15

Attendance: 324

Sponsors: African American Inspiration, WFLT 1420AM; Mr. & Mrs. Henry Allen; Epsilon Upsilon Lambda Chapter; Baker Center for Graduate Studies; Kay & Michael Behm; Joe & Clara Blakely; James & Kathy Boles; Mrs. Eleanor Brownell; Dave & Sylvia Caudle; Communities First, Inc.; Cracker Barrel Old Country Stores; Davenport University; Delta Sigma Theta Sorority, Flint Alumnae Chapter; Double Dragon Tang Soo Do (Jeff Wheeler); FM Financial Credit Union; Dr. & Mrs. Michael Frappier; John & Catherine



Wine Tasting Event: Around the World in 80 Wines

Frederick; Joanne & Bob Fuller; Mr. Tendaji W. Ganges; Genesys Health System; Greater Flint Chapter of the Pierians, Inc; Hamilton Health Network; Louis Hawkins; HealthPlus of Michigan; Lynne Hurand; Gary & Carol Hurand; Kettering University; Landaal Packaging Systems; Lawrence E. Moon Funeral Home; John & Diane Lindholm; Alvern & Theresa Lock; Loving Hands, Inc.; Loyst Fletcher, Jr. & Associates; Dr. Ramotsumi & Velynda Mekhene; McLaren Flint; Thomas J. Mitchell; Mott Children's Health Center; Mott Community College; Mr. Milton & Dr. Brenda Rogers-Grays; Drs. Bobby & Nita Mukkamala; Dr. & Mrs. Kienan F. Murphy; Gail Buckner Odom; OutFront Media; Ann & Khalil Saab; Chuck & Kathryn Sharbaugh; The Chosen Few Corporation; The Rutherford Group; The Williams Firm, PC; UAW Region 1-D; University of Michigan-Flint; Upper Room Missionary Baptist Church (Pastor Alvin Bradford); WCMU Public Broadcasting; Dean & Lynda Yeotis.

Art School LEGO®

3.28.15

Attendance: 1,406

Sponsors: Barnes & Noble; Flint Area School Employees Credit Union; Dr. Shawn Reiser & Dr. David Taylor.

16th Annual Wine Tasting

4.25.15

Attendance: 311

Sponsors: Abbott's Meats; Ameriprise, Aremia's; Dawn-Hausch-Cooper; Automation & Modular Components, Inc.; Behm & Behm; Bella Birches; Bennett Telephone Answering Service; Brengman Brothers Winery; James Breslin, PPG; Scott & Nicole Breslin; Cana Distributors; Cork on Saginaw; Crust; Michael E. Dach; Stephen C. & Sandra K. Dyball; Ellen Allen's Cleaning Service; Fandangles; Flint Cultural Center; Food Castle; The French Confection Cakery; Eric & Lauren Gasper; Good Beans Café; Great Lakes Wine & Spirits; Donald Hardman, MD; William Hentgen; Hills Cheese; Hoffman's Chop Shop; Hot Cups Organic Coffee & Tea; Dr. & Mrs. John S. Isaac; J Deans Smoke House; The Laundry; Lauzon/Hankin Advisory Practice at Ameriprise; Lewis & Knopf, PC; McCredie Insurance; Todd & Julie McCredie; Merrill Lynch; Thomas J. Mitchell; MLive Media Group; Matthew L. Norwood, Attorney at Law; OutFront Media; The Palette Café; Piper Realty Co.; Redwood Steakhouse; Sam's Club; Semi-Sweets; William & Susan Shaheen; Siwek Construction Co.; Veritas Wine; Vintage Wine; Wagner Insurance; Dr. & Mrs. Michael Wallace; Warwick Hills Golf & Country Club; WCMU Public Broadcasting; Werschky & Lewis Family Dentistry; Woodberry Wine.

The Party

6.6.15

Attendance: 508

Sponsors: Hank Graff Chevrolet Davison; All Weather Seal; Michel & Hilda Ansara (MJ Diamonds); Christopher Ash, DO; Associated Radiologists of Flint, PC; ATI Group; Baker College; Band Ayd Systems; Bodman, PLC; Cline, Cline & Griffin; Community Podiatry Group, Drs. Reiser & Taylor; Culligan; D.W. Lurvey Construction; Michael Dia, DO; Drs. Bobby & Nita Mukkamala; Epiphany Studios; Zouheir Fares, DO Facos; Flint & Genesee Chamber of Commerce; Joanne & Bob Fuller; FUNchitecture, LLC; Genesee Urgent Care, Dr. Ayman Haidar; Gerych's; Brenda & Lee Gonzales; Bobby J, DDS, DBA Gateway Dental; Adam Haffajee, Piper Realty;

William Hentgen; Jennifer Lasco Real Estate; Drs. Prasad & Jayashree Kommareddi; Landaal Packaging Systems; Law Offices of John A. Tosto; Maxim Roofing; Olivia Maynard & Olof Karlstrom; NBS Commercial Interiors; Steven Neirink, DPM; Matthew L. Norwood, Attorney at Law; Olmsted Associates; OutFront Media; Suellen J. Parker; Pure Bliss Salon & Spa; Rama Rao, MD; Redwood Steakhouse; ROWE Professional Services; Ann & Khalil Saab; Ghassan & Manal Saab; Joe & Julie Serra, The Serra Foundation; Philip & T. Ardele Shaltz; Siwek Construction Co.; Sheila R. Smith; Spartan Printing; Stephens Wealth Management Group; George & Tiffany Stolzenfeld; Summerset Salon & Day Spa; Swartz Ambulance; The Children's Office, Dr. Kienan F. Murphy; The Historic Capitol Theatre; The Hurand Family; The John Wentworth Group; The Torch Bar & Grill; Tom & DeAnn Townsend; John & Catherine Tremaine; Zip Mailing/ The Print Shop.

48th Annual Flint Art Fair

6.20.15–6.21.15

Attendance: 7,000

Sponsors: ELGA Credit Union, Michigan Council for Arts and Cultural Affairs.

Facilities Rentals

7.1.14 – 6.30.15

Attendance: 6,613

Rentals: 62

Auxiliary Groups

Each year, support groups donate thousands of dollars and volunteer hours to the Institute in support of exhibitions, art acquisitions, and programs. The Flint Institute of Arts is deeply grateful to the members of the Friends of Modern Art and the Founders Society for their generous support.

Friends of Modern Art

Letter from the President, Mike Wright

Fiscal year 2014–15 was a productive year for the Friends of Modern Art.

Direct support for FIA museum activities included sponsorship of the exhibition, *The Art of Video Games*. As part of a ten-city national tour, *The Art of Video Games* was on view at the Flint Institute of Arts October 25, 2014 through January 18, 2015. This unique, interactive exhibition organized by the Smithsonian American Art Museum, was the first major museum exhibition to explore the 40-year history of the technical and social phenomenon of video games as an artistic medium.

FOMA's fall and winter film series achieved record breaking attendance this fiscal year serving more than 11,000 and several films chosen were honored with Academy Awards or nominations. Additionally, the weekend series was supplemented with the "Best of FOMA" Thursday night series and various film festivals. As always, we are grateful to our volunteers and the museum staff, especially Ed Bradley, for the efficient management of the film series.

In June, the Friends of Modern Art presented the 48th annual *Flint Art Fair* on the grounds of the Flint Institute of Arts. The Art Fair is an iconic event, signifying the beginning of the summer cultural season in Flint. Each year the Fair attracts nearly 200 artists and thousands of local residents and out-of-town visitors.

Officers

Mike Wright, *President*
Lynne Taft-Draper, *Vice President*
Colette Essa, *Secretary*
Mike Wright, *Treasurer*

Board of Trustees

James Draper
Nora Fisher
Christopher Kelly
Michael Rucks



Founders Society

Letter from the President, James D. Draper

The Founders Society pledged \$27,000 in support of the Flint Institute of Arts in our fiscal year 2014–2015. These pledges were to support the FIA as follows: \$2,000 FIA Library, \$10,000 exhibition sponsor of *Beauty, Passion, and Bliss: 19th-Century Masterworks from the Dahesh Museum of Art*, and \$15,000 as the Graphics Gallery Sponsor. A check for \$27,000 was presented to the FIA on June 16, 2015 at our business meeting.

The 2014 net revenue from *First Frost Arts and Fine Crafts Fair* in October was \$16,402. While our expenses were nearly identical to the previous year, there was a \$3,918 income reduction. This may be partially attributable to the fair being moved forward two weeks into October from its usual first weekend in November. This was done to accommodate the FIA's *Art of Video Games* exhibition. Another problem was that the revised date coincided with the *Making Strides* (against breast cancer) walk which essentially closed all access roads to the FIA on Saturday morning of *First Frost's* opening, which was sparsely attended until the roads were reopened in the afternoon. Regardless of these setbacks, *First Frost* will be back to its first weekend in November time slot for 2015 and the near future.

Our active travel and tours committee generated income of \$3,315. They continue to look at new and innovative ways for trips of interest both to local venues and world wide. In 2015 we looked forward to a trip to the Detroit Institute of Arts for the Rivera and Kahlo exhibition at the end of June and *A Taste of the South Pacific* in October.

As of May 2015, the Art Sales & Rental Gallery has transferred \$5,000 into the Founders account. These were proceeds from its sale or rental of juried works of art by both local and regional artists. In addition to staffing the gallery on a daily basis, our Art Sales & Rental volunteers generate new FIA memberships because of our art rental requirements.

In the spring of 2012, the Founders Society initiated a modest \$10 annual membership fee. Their membership benefit package included two complementary admission tickets to the *First Frost Arts and Fine Crafts Fair* plus discounts and gift cards to the Art Sales & Rental Gallery. At our May 19 meeting, our membership, which has increased each year, was at 318. The FIA collects those monies for Founders as part of the regular membership renewal process.

On December 9, 2014, we hosted our traditional holiday luncheon for all FIA staff members in Isabel Hall. It was our way to thank the FIA staff for the many ways in which they generously assist the Founders Society in fulfilling its mission.

Income received from our various activities has enabled the Founders Society to fund our FIA pledge and leave us with a current balance of \$83,068. A final end-of-year adjustment will be made upon receiving our dues income for this fiscal year. In addition to our fundraising activities this past year, members of the Founders Society have collectively donated thousands of hours of service to the ultimate benefit of the Flint Institute of Arts. The Founders Society as an organization remains strong and is committed to the support of the Flint Institute of Arts for now and into the future.

Officers

James D. Draper, *President*
Vicki Frappier, *Co-Vice President*
Sheila Smith, *Co-Vice President*
Candi Pfaff, *Recording Secretary*
Tammy Schultz, *Corresponding Secretary*
Sam Burdick, *Treasurer*
Susan Steiner Bolhouse, *Immediate Past President*

Board of Trustees

Jeneil Applegate
Betty Brown
Patricia Burdick
Mary Coleman
Jean Liming Dundas
Billie Fisher
Maggie Hart
Bill Hentgen
Lynne Hurand
Judith Ingram
Dahna Loeding
Perry Ann Owen
Saroja Reddy
Paul Rozycki
Jackie Scott
Ernelle Taylor
Bob Turley
Carol Turley
Bob Van Duyne
Mary Van Duyne
Barbara White
Trish Zito-Smith



Contributions

Annual Appeal

Anonymous
Edward & Lois Abbott
Ms. Valarie F. Allen
Mr. Steven S. Bailie
Mr. & Mrs. Richard P. Baks
Mr. & Mrs. Kelly B. Beardslee
Dr. & Mrs. William D. Beck & Kristen
Mrs. Doris Beebe
Dr. & Mrs. William M. Bernard
Dr. Morley M. Biesman
Ms. Jane M. Bingham
Ms. Bernie Bishop
Ms. Susan Steiner Bolhouse & Mr. William Ballenger III
Mr. & Mrs. Bob Booher
Mrs. Carole A. Brender
Mr. Benjamin Brock
Mrs. Monica J. Brown
Mrs. Edmund Brownell
Ms. Jennifer Burnett & Mr. Sean Siebigteroth
Mr. & Mrs. Tom E. Butts
Ms. Sally Case
Dr. & Mrs. Alexander Chan
Ms. Mary L. Christian
Ms. Melba R. Clapp
Mr. & Mrs. Bruce T. Colasanti
Ms. Mary Coleman
Miss Vera L. Crandall
Mrs. Nancy M. Cronin
Mr. & Mrs. Daniel Cruz
Mr. & Mrs. F. James Cummins
Mrs. Nancy J. Cunningham
Ms. Gail M. Curry
Mr. & Mrs. Wm. Stefan Davidek
Ms. Jeanne Dobes
Mr. & Mrs. John Dumas
Ms. Darba L. Dye
Mr. Ryan M. Eashoo
Mr. John Ellenwood
Mrs. Loretta C. Ellwood
Mr. & Mrs. Bennett Engelman
Ms. A. Joan Fischer
Mr. Michael Fives
Flint Banjo Club
Mr. & Mrs. Robert Florine
Mr. & Mrs. Richard Fortier
Mr. & Mrs. Richard Fox

Dr. & Mrs. Scott A. Garner
Ms. Patricia Gebhardt
Mr. & Mrs. Michael Goulet
Mrs. Donna A. Graham
Mr. & Mrs. Greg Gromek
Mr. Michael Grossklaus
Dennis & June Haley
Ms. Janice T. Harden
Mrs. Diana Harsch
Ms. Lois Hartranft
Mrs. James Hastings
Mr. John Hemingway & Mrs. Connie Palmer
Ms. Annetta Hendrickson
Mr. & Mrs. John B. Henry
Mrs. Ernie Hermann
Mr. Bradley Holland
Mrs. Martha B. Hopkins
Mr. & Mrs. Francis Hudson
Ms. Lynne Hurand
Mr. Robert Jacobs
Mr. Paul Karr
Dr. Benjamin E. & Estelle Kaufman
Mr. James R. Kettler
Mr. & Mrs. Dennis Kingsley
Mr. & Mrs. Norman Kleiner
Mr. & Mrs. Jim Kolhoff
Mr. & Mrs. Richard H. Kraft
Mr. & Mrs. Stephen S. Landaal
Ms. Rebecca Lazar
Dr. & Mrs. Paul Lauber
Ms. Betty Leavitt
Mrs. Ruth Leder
Mrs. Linda LeMieux
Mr. Max Lepler & Mr. Rex L. Dotson
Prosecutor David & Therese Leyton
Mr. & Mrs. Thomas B. Lillie
Mr. & Mrs. Kenneth Lindebekke
Mr. & Mrs. Glenn Lysinger
Ms. Doris Malfese
Ms. Jeanette R. Mansour & Mr. Joe Green
Mrs. Mary Markel
Dr. & Mrs. Berton J. Mathias
Mr. Michael Mathieu & Ms. Barbara Swartz
The McCredie Family
Mr. & Mrs. Ted Meadors
Jack & Beverly Mills
Mr. Thomas J. Mitchell
Rochelle Molyneaux

John & Pat Mucha
Miss Kathleen E. Muench
Mr. & Mrs. Michael Munger
Dr. & Mrs. Kienan F. Murphy
Mr. & Mrs. Alexander C. Murray
Mr. Jim Naddeo
Ms. Sharon Y. Naughton
Mr. H. Michael Parker
Ms. Jacqueline Piechowski
David & Randee Pieper
Mrs. Karan A. Pinkston
Dr. & Mrs. George D. Politis
Mr. & Mrs. Mark Prescott
Mrs. Fouad Rabiah
Ms. Sally L. Reigle
Mr. & Mrs. A. Davison Rice
Mr. & Mrs. James P. Ricker
Mr. & Mrs. John L. Riegle, Jr.
Mr. & Mrs. Michael J. Riha
Mr. & Mrs. Robert T. Robison
Drs. Michael & Virginia Rucks
Mrs. Ellajane S. Rundles
Mr. & Mrs. Walter Russ
Mr. & Mrs. Khalil M. Saab
Mr. & Mrs. David Sabino
Dr. & Mrs. Frederick C. Schreiber
Dr. & Mrs. Paul E. Schroeder
Mr. & Mrs. Howard S. Schultz
Mr. & Mrs. William A. Shaheen, Jr.
Grant from The Shand Family Fund
Chuck & Kathryn Sharbaugh
Mr. & Mrs. George Skaff
Dr. Ernestine R. Smith
Mr. & Mrs. James Spangler
Ms. Shelley R. Spivack & Mr. Justin Scanlon
Dr. & Mrs. Morton Stanley
Mrs. Sally Stevens
Miss Barbara Stewart
Mrs. Helene J. Streich
Ms. Suzanne Sugden
Amy & Wes Sutkowi
Doris A. Sutton Family Foundation
Dr. & Mrs. Thomas Svitkovich
Ms. Roberta Sweetman
Mr. Peter Switzer
Mr. Robert R. Thomas
Mr. & Mrs. Robert Turley
Dr. & Mrs. Frederick VanDuyne
Dr. Tarik Wasfie
Ms. Elizabeth Wates

Mrs. Mary E. Whaley & Mr. Rick Kroeger
Mr. & Mrs. Ridgway H. White
Dr. & Mrs. James Williams
Dr. Sue Wisenberg & Ms. Donna Baker
Mr. & Mrs. Dean Yeotis
Judge & Mrs. Thomas C. Yeotis
Mrs. Barbara A. Young

Annual Appeal Matching Gifts

Charles Stewart Mott Foundation
Eaton Benefits/Service Center

Art School

Mrs. Sarah Andresen & Ms. Catherine Andresen
Mrs. Karen Benson
BorgWarner Foundation
Mrs. Colleen Crandall
Mr. & Mrs. Gordon Crandell
Mr. Todd Ferguson
Dr. & Mrs. Scott A. Garner
Mr. & Mrs. Timothy A. Hohn
Dr. & Mrs. John S. Isaac
Ms. Chene Koppitz
Lee & Vickie Maxwell
Merkley-Youth Charitable Trust
Mr. Matt Patterson
Ms. Carol Payne
The Sheppy Dog Fund, Dr. Alan Klein, Advisor

Art School EDW Fund

Anonymous
Cargill Foundation - Matching Gift
Mr. Christopher Carr
Charles Stewart Mott Foundation
Charles Stewart Harding Foundation
Mrs. Anne Flegenheimer
Ms. Susan Griggs
Miss Kerstin Lawrence
Ms. Shirley J. Winston

Capital Campaign

Weinstein Electric Co.

Collections

Art House Lectures & Tours, Inc.
Falding B. Bishop
Mr. Russell S. Bishop III
Mr. Michael Farrell & Mr. Marc Herrick
Founders Society
Mr. Michael D. Hall & Ms. Patricia A. Glascock
Mr. Martin Magid
Mr. & Mrs. Ivan Smith

Digital Projector Fund

Mr. & Mrs. Clark Chastain
Mr. & Mrs. Michael J. Riha

Education

Mr. & Mrs. John A. Brancheau
Mr. James R. Chintyan
Ms. Rebecca Gale-Gonzalez
Ms. Nicolette McClure
Merkley-Elderly Charitable Trust
Nartel Family Foundation
PNC Foundation
Ruth Mott Foundation
Mr. Marshall Shaink
Target
WKAR

Endowment

Eaton Benefits/Service Center - Matching Gift
Ms. Donna M. Gardiner
Dr. Jamile T. Lawand & Mr. Barry J. Carr
Mr. & Mrs. Harvey Ring

Event Sponsors

Ranjeet & Gurjit Ajimal
All-Weather Seal
Henry & Mary Allen
Dawn L. Hausch-Cooper, Ameriprise Financial Services, Inc.
Mr. & Mrs. Michel Ansara
Applebee's

Arby's of Grand Blanc
Christopher J. Ash D.O.
Associated Radiologists of Flint/ Greater Flint Imaging
ATI Group
Automation & Modular Components Inc.
Bafana Associates, LLC
Baker College Center for Graduate Studies
Baker College
Walter Barkey, MD
Barnes & Noble
Beef & Barley
Mr. & Mrs. Michael J. Behm
Behm and Behm, P.C.
Minister Gilbert & Ms. Nannette Benman
Bennett Telephone Answering Service
Bishop International Airport
Mr. & Mrs. Joe Blakely
Bobby J. Grossi DDS DDA
Gateway Dental
Bodman PLC: Michael & Sharon Stack, Stacey & John Cashen, Christopher & Ann Dine, Renee & Joseph Kochanek, Brian & Gloria Trumbauer
Mr. & Mrs. James & Kathryn Boles
James Breslin, PPG
Scott & Nicole Breslin
Brown & Brown of Michigan, Inc.
Mrs. Eleanor Brownell
Ms. Gail R. Buckner-Odom
Mr. & Mrs. Dave Caudle
Chamber of Commerce
The Children's Office - Dr. Kienan Murphy
Cline, Cline & Griffin PC
Communities First, Inc.
Dr. Shawn L. Reiser & Dr. David Taylor, Community Podiatry Goup, PC
Cracker Barrel Old Country Stores, Inc.
Culligan
D.W. Lurvey Construction
Mr. Michael E. Dach
Sonali A. Dass
Davenport University

Delta Sigma Theta Sorority, Inc.- Flint Alumnae Chapter
Jim & Janey Dillard
Don Franco Salons
Mr. & Mrs. David Doneth
Double Dragon Tang Soo Do
Stephen C. & Sandra K. Dyball
Kathy & Harry Eiferle
Shantaram & Hemlata Ekhande
Ellen Allen's Cleaning Service
Zouheir Fares, D.O., Facos
Fifth Third Bank
John & Janie Fleckenstein
Flint Area School Employees Credit Union
Flint Cultural Center Corporation
Flint & Genesee Chamber of Commerce
Flint & Genesee Regional Flint Public Library
Flint Welding Supply Co.
FM Financial Credit Union
Mr. & Mrs. Henry Fracalossi
Dr. & Mrs. Michael R. Frappier
Mr. & Mrs. John Frederick Joanne & Bob Fuller
FUNchitecture LLC
Mr. Tendaji W. Ganges
Eric & Lauren Gasper
Genesee Packaging Inc.
Genesee Urgent Care, Dr. Ayman Haidar
Genesys Health Systems
Brenda & Lee Gonzales
Graff Truck Centers, Inc.
Greater Flint Chapter of the Pierians, Inc.
Guardian Mortgage Co., Inc.
Kamal & Shashi Gupta
Rao & Srilata Gutta
Hamilton Community Health Network
Hank Graff Chevrolet Davison
Dr. Mona Hardas & Dr. Sam Kiran
Donald J. Hardman, M.D.
Mr. Louis A. Hawkins
HealthPlus of Michigan
Mr. William J. Hentgen
The Historic Capitol Theatre
Hot Rods Unlimited
The Hurand Family

Mr. & Mrs. Gary J. Hurand
Ms. Lynne Hurand
Dr. & Mrs. John S. Isaac
Jennifer Lasco Real Estate
Sunil Kaushal, MD PC
Kelly-Younger Interiors
Kettering University
Ketzler's Florist
Michael & Manisha Kia
Mark H. Knight DDS
Sosa & Paul Kocheril
Dr. & Mrs. Prasad Kommareddi
Rachana Kunder
Landaal Packaging Systems
The Landaal Family
Lauzon/Hankins Advisory Practice at Ameriprise
Lawrence E. Moon Funeral Home
Lewis & Knopf, CPAs, P.C.
Mr. & Mrs. John Lindholm
Mr. Alvern Lock & Mrs. Theresa Stephens-Lock
Vince Lorraine, My City Magazine & Tropi-Tan Tanning Salons
Loving Hands, Inc.
Dr. & Mrs. Ramotsumi Makhene
Sreen & Anita Mannam
Ms. Olivia P. Maynard & Mr. S. Olof Karlstrom
McCredie Insurance Agency
Todd & Julie McCredie
McLaren Regional Medical Center
Merrill Lynch
Mark Mikolajczak
Miller Apple L.P.
Mr. & Mrs. Mark Miller
Ramesh & Anjali Misra
Thomas J. Mitchell
Subhasis & Swayamsidha Mohanty
Mott Children's Health Center
Mott Community College
Dr. Bobby Mukkamala & Dr. Nita Kulkarni
Dr. & Mrs. Kienan F. Murphy
Sunil & Sumita Nagpal
Chitra P. Naik, DMD
NBS Commercial Interiors
Steven Neirink, DPM
Matthew L. Norwood Attorney at Law
Olmsted Associates, Inc.

Ms. Suellen J. Parker
 Mayur & Bhargavi Patel
 Mehul & Kiran Patel
 Milin & Reena Patel
 Randy Piper & Susie Stuewer
 Piper Realty Co.
 Adam Haffajee-Broker, Piper Realty
 Bruce G. Pollock & Associates Inc
 The Print Shop of Flint Inc. / Zip
 Mailing Co.
 Pure Bliss Salon & Spa
 Param Puri
 Rama D. Rao MD
 Vikram Rao
 Raymond James
 Mr. Milton & Dr. Brenda Rogers-
 Grays
 Maxim Roofing
 Rowe Professional Services Co.
 The Rutherford Group
 Dr. & Mrs. Daniel J. Ryan
 Ghassan & Manal Saab
 Ann & Khalil Saab
 Vijay Saharan & Dhiraj Bedi
 Sapphire Blue Investment Partners
 Vijay & Bhagwan Sayal
 Joe & Julie Serra - The Serra
 Foundation
 Mr. & Mrs. William A. Shaheen, Jr.
 Philip & T. Ardele Shultz
 Chuck & Kathryn Sharbaugh
 Mehesh & Punam Sharman
 Siwek Construction Co.
 Spartan Printing
 Special Occasions
 Ajay & Sweetie Srivastava
 Ken & Linda Steibel
 Stephens Wealth Management
 Group
 George & Tiffany Stolzenfeld
 Mrs. Helene J. Streich
 Summerset Salon Day Spa
 Mukesh & Kavita Suryavanshi
 Swartz Ambulance Service/Div. of
 Swartz Amb. Service Inc.
 The Torch Bar & Grill
 Law Offices of John A. Tosto: Eric
 McCormick, PLC & John A.
 Tosto, PLC
 Tom & DeAnn Townsend
 Tremaine Real Living Real Estate

UAW Region 1D
 University of Michigan-Flint
 Upper Room Missionary Baptist
 Church
 Murugusundaram Veeramani &
 Kavita Rajkotia
 Wagner Insurance
 Pranjali & Shekhar Wakade
 Dr. & Mrs. Michael Wallace
 WCMU
 John & Jennifer Wentworth ReMax
 The John Wentworth Group
 Werschky & Lewis Family Dentistry
 Whigville Market
 The Williams Firm, P.C.
 WKAR
 Doug & Dawn Wyrwicki
 Yeo & Yeo CPAs & Business
 Consultants
 Mr. & Mrs. Dean Yeotis

Exhibition Sponsors

BorgWarner Foundation - Matching
 Gift
 Clay Club
 FirstMerit
 Founders Society
 Mr. William J. Hentgen
 Hurley Medical Center
 Kettering University
 Eric & Nancy Smith
 Whiting Foundation

Flint Print Club

Ms. Valarie Allen
 Mr. & Mrs. Gordon Andrews
 Mr. & Mrs. Michael J. Behm
 Mr. & Mrs. Ryan & Tracy Bessert
 Ms. Barnie Bishop
 Mr. & Mrs. Dean Bonesteel
 Mr. & Mrs. Scott J. Breslin
 Mr. & Ms. Gary Casey
 Ms. Sarah Christensen
 Mr. Bryan Christie
 Mr. Joseph Coriaty
 Mr. & Mrs. F. James Cummins
 Mr. Donald Davenport
 Mr. John V. Dempsey & Ms. Margo
 Lakin

Mr. Greg Edquist
 Mr. & Mrs. Robert L. Bessert
 Mr. & Mrs. Mark Farella
 Mr. & Mrs. Michael A. Farella
 Mr. Michael Farrell & Mr. Marc
 Herrick
 Ms. Nora G. Fisher
 Mr. & Mrs. Jeff Garrett
 Mr. Thomas M. Gervasi
 Mr. & Mrs. Jonathan Glab
 Mr. & Mrs. Walter Griffin
 Mr. Mark Hamel & Mr. Mike
 Green
 Mr. & Mrs. Richard S. Harris
 Samuel & Graciela Harris
 Mr. Louis A. Hawkins
 Mr. & Mrs. Neal Hegarty
 Mr. & Mrs. John B. Henry
 Ms. Valorie Horton
 Ms. Ann Howard
 Ms. Lauren Hunter
 Mr. & Mrs. Gary J. Hurand
 Mr. & Mrs. Josh Hurand
 Ms. Lynne Hurand
 Ms. Sara Hurand & Mr. Elie Weiss
 Judith M. & Robert J. Irwin II
 Ms. Heather Jackson
 Mr. & Mrs. James N. Johnson
 Ms. Jimmye Johnson
 Mr. & Mrs. Christopher S. Kelly, Sr.
 Ms. Donielle Keyes
 Dr. Samasandrapalya Kiran & Dr.
 Mona Hardas
 Ms. Natalia LaFuente
 Mr. Miles Lam
 Mrs. Jennifer Lane & Family
 Scott & Lisa Langenburg
 Dr. Jamile T. Lawand & Mr. Barry
 J. Carr
 Dr. Valerie Ann Leeds
 Mr. Max Lepler & Mr. Rex L. Dotson
 Ms. Martha Lockhart
 Tiffany & Bob Lovett
 Dr. & Mrs. Michael Macksood
 Mr. Michael Martin & Mr. Bryan
 Paris
 Mr. & Mrs. Sean McCormick
 Mr. & Mrs. David S. McCredie
 Mr. Thomas J. Mitchell
 James R. & Helen Sue Morgan
 Drs. Bobby & Nita Mukkamala

Dr. & Mrs. Kienan F. Murphy
 Mr. Patrick Murray & Mr. James
 Edwards
 Mr. & Mrs. Robert W. Myers
 Mr. & Mrs. Ed Ogul
 Mr. & Mrs. Peter Ott
 Ms. Natalie Pelavin
 Mr. & Mrs. Gary Philpott
 Mr. Wayne Pickvet & Mr. Bruce A.
 Barrett
 Mr. & Mrs. Raymond Gorton
 Mr. & Mrs. Eugene B. Griffel
 Mr. John Hemingway & Mrs.
 Connie Palmer
 Mrs. Ermie Hermann
 Ms. Helen R. Hoyt
 Ms. Barb Huffman
 Mrs. Marilyn Hurwitz
 Mrs. Charlotte Kasle
 Mr. & Mrs. Franklin H. Kasle
 Mrs. Marilyn Kopp
 John Pendell & Vickie Larson
 Mr. & Mrs. Lee LaVictoire
 Stephen & Kathleen Leist
 Mr. & Mrs. Richard Lutgens
 Ms. Maureen MacVay
 Ms. Susan M. Mangapora
 Mr. & Mrs. Charles Marshall
 Ms. Carol Masse
 Ms. Lisa Maznio & Ms. Jacqueline
 Maznio
 Mr. & Mrs. Sean McCormick
 Ruth A. McLearn
 Mr. & Mrs. Ed Meier
 Ms. Heather Meier
 Dr. Juan E. Mestas
 Mr. Shai M. Brosh & Ms. Christine
 Mieloch
 Ms. Anne Naber
 Ms. Suzanne Owen
 Ms. Alta Parsons
 Mr. John Petters
 Mr. Robert S. Piper
 Dr. & Mrs. George D. Politis
 Ms. Lori Popyk
 Mr. Mort Potter
 Dr. Jacquelyn Reinertson
 Mr. & Mrs. Michael J. Riha
 Mr. & Mrs. Roy Sabo
 Mr. and Mrs. Mark A. Schwartz
 Mr. & Mrs. Bob Shaw
 Ms. Sandra K. Smith

Film Society Members

Mr. & Mrs. Kenneth G. Aurand
 Mr. & Mrs. Richard Beauchamp
 Mr. & Mrs. Ted Bolander
 Ms. Marilyn Brown
 Mr. & Mrs. Tom E. Butts
 Ms. Peggy Campbell
 Ms. Sam & Bonnie Chambers
 Mrs. Kay Cherry
 Ms. Bonnie Cleffman & Mrs. Hazel
 Cleffman
 Ms. Candace Caveny Collins
 Mr. & Mrs. Allan Coon
 Samuel & Darylee Coplin
 Carol Egloff
 Ms. Patricia Emenyonu
 Ms. Geraldine Erwin
 Ms. Nora G. Fisher

Mr. Richard W. Fortner
 Ms. Virginia Gaffney
 Mr. & Mrs. Robert Gardner
 Ms. Jane Garside
 Ms. Kathleen George
 Kim & John Giacchina
 Roger & Terrie Gilmour
 Mr. Tom Glasscock & Ms. Helen
 Bas
 Mr. & Mrs. Raymond Gorton
 Mr. & Mrs. Eugene B. Griffel
 Mr. John Hemingway & Mrs.
 Connie Palmer
 Mrs. Ermie Hermann
 Ms. Helen R. Hoyt
 Ms. Barb Huffman
 Mrs. Marilyn Hurwitz
 Mrs. Charlotte Kasle
 Mr. & Mrs. Franklin H. Kasle
 Mrs. Marilyn Kopp
 John Pendell & Vickie Larson
 Mr. & Mrs. Lee LaVictoire
 Stephen & Kathleen Leist
 Mr. & Mrs. Richard Lutgens
 Ms. Maureen MacVay
 Ms. Susan M. Mangapora
 Mr. & Mrs. Charles Marshall
 Ms. Carol Masse
 Ms. Lisa Maznio & Ms. Jacqueline
 Maznio
 Mr. & Mrs. Sean McCormick
 Ruth A. McLearn
 Mr. & Mrs. Ed Meier
 Ms. Heather Meier
 Dr. Juan E. Mestas
 Mr. Shai M. Brosh & Ms. Christine
 Mieloch
 Ms. Anne Naber
 Ms. Suzanne Owen
 Ms. Alta Parsons
 Mr. John Petters
 Mr. Robert S. Piper
 Dr. & Mrs. George D. Politis
 Ms. Lori Popyk
 Mr. Mort Potter
 Dr. Jacquelyn Reinertson
 Mr. & Mrs. Michael J. Riha
 Mr. & Mrs. Roy Sabo
 Mr. and Mrs. Mark A. Schwartz
 Mr. & Mrs. Bob Shaw
 Ms. Sandra K. Smith

Ms. Shelley R. Spivack & Mr. Justin
 Scanlon
 Ms. Elizabeth Svoboda
 Dr. & Mrs. L. VanWinkle, Jr.
 Mr. Mark A. Walters
 Ms. Alice Ward
 Dr. & Mrs. Stuart B. Weiner
 Ms. Janette A. Wilson
 Mr. Dale F. Wolfgram

Film Society Sponsors

Mr. Carroll G. Baker & Ms. Kimberly
 Roberson
 Susan Steiner Bolhouse & William
 S. Ballenger III
 Mrs. Edmund Brownell
 Guardian Alarm Co. of Michigan
 Mr. & Mrs. John B. Henry
 Ms. Carol Masse
 Merrill Lynch
 Merrill Lynch - Financial Advisors
 Serving the Flint Community:
 John MacDonald, Patrick
 O'Sullivan, Param Puri, Jerry
 Rhoden, David C. Vallie, Paul
 Wenstrom, Donald J. Zandstra
 Michigan Public Radio
 Dr. & Mrs. Kienan F. Murphy
 Ms. Linda L. Pylypiw
 Drs. Michael & Virginia Rucks

Gifts to the Film Program

Ms. Jane Garside
 Mr. & Mrs. Philip Jackson
 Mr. Eric Norman & Ms. Joanna
 Rodriguez

General Contributions

Mr. Reid Baxter & Ms. Diane
 Simpson
 Mr. Robert L. Daly
 ELGA Credit Union
 Lynne Hurand
 Mrs. Robert C. Morgan
 Robert S. & Judy W. Piper Family
 Fund of the Community
 Foundation of Greater Flint

Mr. Scott Romanowski
 Mr. Stanley Turner

Gift of Flint Print Club

Mr. & Mrs. Michael A. Farella for
 Mark Farella
 Dr. Eric Friess for Lauren Hunter
 Mr. & Mrs. John B. Henry for Jeff &
 Megan Rolf
 Mr. & Mrs. Gary J. Hurand for Josh
 & Ashley Hurand
 Mr. & Mrs. Gary J. Hurand for Sara
 Hurand & Elie Weiss
 Mr. William S. White for Bob &
 Tiffany Lovett
 Mr. William S. White for Shannon &
 Ridgway White

Gift of Membership

Ms. Frances L. Ascencio for Marc
 & Lisa Gronauer
 Ms. Shelia Auten for Paul & Joselyn
 Arteaga
 Ms. Jennifer Bailey for Suzette
 Bailey
 Mr. Clinton Brisbane for Merinda
 Brisbane
 Ms. Patricia J. Cleland for Sandy
 Malnar
 Dr. Deb Doherty for Rick & Jackie
 Lutz
 Ms. Nancy Epstein for Mr. & Mrs.
 Randle Finley
 Mr. Rich Fitz for Tammy Harding
 Ms. Pam Folts & Ms. Lisa Land for
 Connie Kale & Christie Healy
 Dr. Eric Friess for Lauren Hunter
 Joanne & Bob Fuller for Trent &
 Jennifer McEntire
 Ms. Kathleen George for Kathleen
 Moore
 Ingrid G. Halling for Wayne & Paula
 Edgerton
 Mr. & Mrs. Gary J. Hurand for
 Joshua & Ashley Hurand
 Mr. & Mrs. Gary J. Hurand for Sara
 Hurand & Elie Weiss
 Connor Kelly for Virginia Gaffney
 Miss Kerstin Lawrence for Martha
 Calhoun

Dr. Eureka McAllister for Bobbie &
 Robert McAllister
 Mr. & Mrs. James Mikulski for Mary
 Burdis
 Mrs. Jeanette Neu & Mr. Jesse
 Ballew for Daniel Neu Family
 Mrs. Fouad Rabiah for Sarah
 Harmon Rabiah
 Mrs. Fouad Rabiah for William
 Harmon Rabiah
 Mrs. Fouad Rabiah for Victoria
 Ybarra
 Mrs. Miriam S. Schaffer for Robert
 & Laura Schaffer
 Mr. & Mrs. Howard S. Schultz for
 Lucy Hightree
 Mr. & Mrs. Howard S. Schultz for
 Martha & Robert Janson
 Mr. Michael Sprague & Dr. Janet
 Sprague for Mary Sprague
 Ms. Keely Sugden for Suzanne
 Sugden
 Ms. Janice Tessner for Murray &
 Julie Kleinert
 Ms. Jolyn Vita for Jannell Tillman
 Mr. William S. White for Tiffany &
 Bob Lovett
 Mr. & Mrs. Keith Wolfgram for
 Connor Wolfgram
 Ms. Katharine Wright for Teresa
 Wright
 Ms. Stacey Younger Gagosian for
 Andrew Younger & Elena Moeller
 Younger

Grants

Anonymous donor advisor from
 the Community Foundation of
 Greater Flint
 Arthur G. Bishop Charitable Trust
 Charities Aid Foundation America,
 Dr. Alan Klein, Advisor
 Charles Stewart Harding
 Foundation
 Charles Stewart Mott Foundation
 Isabel Foundation
 James A. Welch Foundation
 Jay & Marilyn Nelson of the Nelson
 Family Foundation
 Katharine B. Miner Trust
 Merkley-Elderly Charitable Trust

Merkley-Youth Charitable Trust
 Michigan Council for Arts &
 Cultural Affairs
 Nartel Family Foundation
 Peter D. & Nancy P. Kleinpell
 Family Fund of the Community
 Foundation of Greater Fiint
 PNC Foundation
 Robert S. & Judy W. Piper Family
 Fund of the Community
 Foundation of Greater Flint
 Ruth Mott Foundation
 The Shand Family Fund
 The Sheppy Dog Fund, Dr. Alan
 Klein, Advisor
 Sidney & Margaret Stewart
 Endowment Fund of the
 Community Foundation of
 Greater Flint
 Stella & Frederick Loeb Charitable
 Trust
 Viola E. Bray Charitable Trust
 Whiting Foundation

Raise the Roof Fund

Mrs. Kathryn Boles
 Ms. Susan Steiner Bolhouse
 Mrs. Edmund Brownell
 Mr. & Mrs. F. James Cummins
 Mr. Louis A. Hawkins
 Ms. Lynne Hurand
 Mrs. Marilyn Kopp
 Mr. & Mrs. Thomas B. Lillie
 Mr. & Mrs. John Lindholm
 Mr. Thomas J. Mitchell
 Mr. M. Keith Moore
 Dr. & Mrs. Kienan F. Murphy
 Matt & Elaine Pawlik, We Wish You
 Were Here Invitational
 Rotary Club of Flint
 Michael & Virginia Rucks
 Ms. Grayce Scholt
 Whiting Foundation
 Mr. & Mrs. Dean Yeotis
 YourCause, LLC - Matching Gift

Tributes & Memorials

**In memory of Flo Fugenschuh
 to Benefit the Art School
 Endowment Fund**
 Art Sales & Rental Gallery
 FIA Staff
 Founders Society
In memory of Sarah Harper
 Ms. Sandra Button
In memory of Almeda Hunter
 Ellen & Jim McLean
**In memory of Bess Hurand to
 support the Hurand Sculpture
 Purchase Fund & the Bess
 Hurand/Dr. Ben Bryer Education
 Endowment Fund**
 FirstMerit Bank

Flint Artists Market
 John & Janice Henry

**In memory of Angelina Davidek
 to benefit the Art School
 Scholarship Fund**
 Flint Artists Market
 John & Janice Henry
 Ms. Barbara Menear

In memory of John Francis Egloff
 Ms. Tracey Howell

**In memory of Dolores Fialka to
 benefit Film Program**
 Mrs. Doris Beebe
 Dr. B. Kay Campbell
 Ms. Barbara Sue Carlson
 Ms. Sharon Drochak
 Ms. Janice Fialka
 Mr. Richard W. Fortner
 Ms. Lisa Frazee
 Mrs. Louise A. Friesen
 John & Janice Henry
 Jack & Peggy Irwin & Stephanie
 Irwin

Pat Kelly

Mrs. Christine Laurin
 Ms. Joanne MacKinnon
 Mrs. Mindi MacKinnon
 Mrs. Ann Newbill
 Betty Noonan & Mary Beth Hodge
 Mr. & Mrs. Alan Novack
 Ms. Joanne K. Paul
 Susan Wedda

**In memory of Flo Fugenschuh
 to Benefit the Art School
 Endowment Fund**
 Art Sales & Rental Gallery
 FIA Staff
 Founders Society

In memory of Sarah Harper
 Ms. Sandra Button

In memory of Almeda Hunter
 Ellen & Jim McLean

**In memory of Bess Hurand to
 support the Hurand Sculpture
 Purchase Fund & the Bess
 Hurand/Dr. Ben Bryer Education
 Endowment Fund**
 FirstMerit Bank

Ms. Bethany Barak
 Mr. & Mrs. Kelly Beardslee
 Ms. Jane M. Bingham
 Ms. Arline P. Bittker
 Susan Steiner Bolhouse & William Ballenger
 Mr. & Mrs. Howard J. Bueche
 Ms. Patricia G. Carpenter
 Chuck & Jane Clapp & Jeff & Pat Hilliard
 Ms. Julie Colish
 Community Impact Fund of the Community Foundation of Greater Flint
 Cooper Commercial Group LTD
 Mr. Chris & Dr. Jean Dundas
 Education Foundation for the Flint Community Schools
 Ada & Ike Eisenfeld
 Mr. & Mrs. Bennett Engelman
 Ms. Ida L. Epstein
 Ms. Nancy Epstein
 Faith Catholic
 FIA Staff
 Mr. Michael J. Fishman
 Dr. & Mrs. Melvin Flamenbaum
 Flint Community Fund of the Community Foundation of Greater Flint
 Ms. Kathleen George
 Terrie Gilmour
 Hank & Bonnie Graff
 Mrs. Julius Gutow
 Connie Hall & Sherry Blackburn
 Frankie and Robert Hardy
 Mr. & Mrs. Joel H. Harris
 Mr. & Mrs. John B. Henry
 Mr. & Mrs. Timothy Herman
 Judith M. & Robert J. Irwin II
 Mrs. Mary Ittigson
 Mr. & Mrs. Raymond J. Kelly III
 Mr. James R. Kettler
 Mr. Joseph D. Klobucher
 Ms. Rita Knutson
 Albert & Barbara Koegel
 Mrs. Marilyn Kopp
 Lapeer County Bank & Trust Co.
 Ms. JoEllen Larzelere
 Mr. & Mrs. James Lay
 Mrs. Linda LeMieux
 MFS & Co., LLC

Marshall & Michele Missner
 Mr. & Mrs. William H. Moeller
 Mr. & Mrs. Lawrence F. Piper
 Ms. Deb Polich & Mr. Russ Collins
 Ms. Linda L. Pylypiw
 Rayna & Richard Ravitz & Family
 Mr. & Mrs. Carl Riseman
 Frank & Linda Roberts
 Mr. & Mrs. Khalil M. Saab
 Dr. & Mrs. Paul E. Schroeder
 Esther Shapiro
 Chuck & Kathryn Sharbaugh
 Mr. & Mrs. Harvey Sparks
 Springview Elementary School Staff
 Ms. Janette Sullivant
 Mr. Byron W. Voorheis III
 Mr. & Mrs. Erik Warren
 Ms. Janet Welch & Mr. Ben Hare
 Judge & Mrs. Thomas C. Yeotis
In memory of Bess Hurand to support the Art School Endowment Fund
 Founders Society
In memory of Bess Hurand to support the Art Sales & Rental Gallery
 Ms. Carole A. Pappas
In memory of Estelle Kaufman to benefit the Art School Endowment Fund
 Ms. Marilyn M. Alvey
 Ms. Ada Feldman
 FIA Staff
 Albert & Barbara Koegel
 Mr. & Mrs. Dennis Lazar
 Judge & Mrs. Robert M. Ransom
 Khalil & Ann Saab
 The Williams Firm, P.C.
In memory of John Kopp
 Mr. & Mrs. Christian C. Klages
In memory of Janet Lakis
 Mr. & Mrs. William A. Shaheen, Jr.
In memory of Joseph McLearn to support the FOMA Film Series
 Mr. & Mrs. Michael J. Barone
 Ms. Judith M. Baum
 K. Beattie

Mr. Keith J. Bonanni & Ms. Delphine B. Tauscher
 Mr. & Mrs. Wayne Brier
 Mr. & Mrs. Mark Christenson
 Ms. Nancy L. Christenson
 Ms. Salli J. Christenson
 Mr. & Mrs. James Delbridge
 Ms. Ladonna Gamble
 Ms. Kathleen Jones
 Ms. Alberta Kelush
 Ms. Bethany Klein
 Mr. & Mrs. Frank T. Leek Jr.
 Mr. Malcolm MacLean
 Mr. & Mrs. John J. Miller, Jr.
 Mr. & Mrs. Marty Modrak
 Ms. Nancy Oberman
 Ms. Ellen Pavkovich
 Ms. Marcia A. Pavkovich
 Mr. & Mrs. Michael Reed
 Danielle, Kurt, Jim & Mike-Saginaw Valley Bone & Joint Center
 Dr. Bruce D. Serven
 Mrs. Gail S. Shulman
 Mr. & Mrs. Robert T. Sibilsky
 Mr. & Mrs. Alan Sorenson
 Sorenson Bankert Inc
 Ms. Susan Sowa
 Deacon & Mrs. John Sundwick
 Ms. Lorinda Tait
 Ms. Cheryl A. Taubitz
 Ms. Janet C. Taubitz
 Ms. Maureen E. Thornell
 Mr. & Mrs. Larry R. Timm
 Ms. Laura Vos
 Mr. & Mrs. Richard Walrath
 Ms. Barb Wojciechowski
In memory of Nancy Hardy Rajala to benefit Endowment The Art Class
 Frankie & Robert Hardy
 Mr. & Mrs. John B. Henry
 Mr. & Mrs. Raymond J. Kelly III
 Albert & Barbara Koegel
 Mrs. Ellajane S. Rundles
 Dr. & Mrs. Daniel J. Ryan
 Kathryn Sharbaugh
In memory of Martha Scrase
 Mr. William D. Fuller
In memory of Woodrow W. Skaff
 Mr. Woodrow Anderson

In memory of Matthew Stefan to benefit the Art School Endowment Fund
 Kathryn Sharbaugh
In memory of Timothy Wates
 Ms. Elizabeth Wates

In memory of Claire White to benefit Art School Endowment Fund
 Elizabeth B. Bishop
 Mr. Stewart M. Dansby
 Dr. Brenda Fortunate & Mr. Edward White
 Ms. Barbara L. Hill
 Mrs. Marilyn Kopp
 Ms. Hillary Mateev Family
 Ms. Maryanne Mott
 Ms. Sandra L. Rinck
 Vuyiswa Sidzumo
 Ms. Dorothy Stoneman
 Mr. William S. White

In memory of Hilda Zureikat
 Dr. & Mrs. Scott A. Garner

In memory of Hilda Zureikat
 Dr. & Mrs. Scott A. Garner

In honor of Dolores J. Fialka for her life & love of the FIA
 Husband Al, children & grandchildren

In honor of Sue & Doug Goering's 50th Anniversary
 Dr. & Mrs. James Williams

In honor of Janice Henry's birthday
 Mr. & Mrs. James Spangler

In honor of Judy & Mark Jacobson's 45th Wedding Anniversary
 Mr. & Mrs. James Spangler

In honor of Karen Boehme & Robert Mackey's wedding
 Ms. Joyce Wisdom & Ms. Helen Pound

In honor of Peter Ott to benefit Collections
 Mrs. Fouad Rabiah

In honor of Grayce Scholt's 90th Birthday
 Ms. Jane Bingham
 Chuck & Kathryn Sharbaugh

In honor of Chuck & Kathryn Sharbaugh's Anniversary to support the Art School Endowment Fund
 Ms. Jane M. Bingham

In honor of Mary Weiss to benefit Raise the Roof Fund
 Pauline Fishler

In honor of Claire White to support the Art School Endowment Fund
 Mr. & Ms. Daniel Richards
 Chuck & Kathryn Sharbaugh

Sponsor of FIA Magazine

Lynne Hurand

Membership

* denotes increased gift level

+ denotes Friends of Modern Art (FOMA) membership

Δ denotes Founders Society membership

Rubens Society (\$1,000 & above annually)

Business
 Abbott's Meat Inc.
 Baker College
 Big John Steak & Onion, Inc.
 Fabiano Brothers, Inc.
 FirstMerit Bank
 Friends of Modern Art
 Genesee Urgent Care
 HealthPlus of Michigan
 Hubbard Supply Co.
 Main Manufacturing Products
 The Sheppy Dog Fund
 Sorensen Gross Construction Co.

Individual

Dr. & Mrs. Daniel Anbe
 Mr. Carroll G. Baker & Ms. Kimberly Roberson+Δ
 Mr. & Mrs. Richard P. BaksΔ
 Mrs. Beverly Bernard
 Mr. & Mrs. Robert L. Bessert+Δ
 Ms. Barnie Bishop
 Mr. & Mrs. James Boles*
 Ms. Susan Steiner Bolhouse & Mr. William Ballenger III
 Mrs. Edmund Brownell+Δ
 Mr. & Mrs. Howard J. Bueche
 Dr. & Mrs. Stephen R. Burton*
 Mr. & Mrs. Chapin Cook+Δ
 Maureen & George Corser+Δ
 Mr. & Mrs. F. James Cummins+
 Mr. Donald Davenport
 Mr. & Mrs. Max Dean
 Mr. & Mrs. James D. Draper+Δ
 Mr. & Mrs. Harry L. Eiferle, Jr.*+
 Mr. & Mrs. Louis Emmert
 Mr. Robert F. Enders
 Mr. Michael Farrell & Mr. Marc Herrick+Δ
 Joanne & Bob Fuller
 Falding B. Gadola
 Hank & Bonnie Graff+Δ
 Mr. & Mrs. Neal Hegarty
 Mr. William J. HentgenΔ
 Mr. & Mrs. Joseph Higgins*
 Mrs. Bess Hurand+Δ
 Mr. & Mrs. Gary J. Hurand+Δ
 Ms. Lynne Hurand+Δ

Mr. & Mrs. Mark Jacobson
 Mr. & Mrs. James N. Johnson
 Dr. Benjamin E. & Estelle Kaufman
 Michael & Kay Kelly
 Mr. & Mrs. Raymond J. Kelly III
 Mrs. Harriet B. Kenworthy+
 Mr. James R. Kettler
 Dr. Samasandrapalya Kiran & Dr. Mona Hardas
 Mrs. Nancy Kleinpell
 Mr. Wayne W. Knecht*+Δ
 Albert & Barbara Koegel+Δ
 Ms. Kathryn Koegel+
 Dr. & Mrs. Prasad Kommareddi+Δ
 Mr. & Mrs. Stephen S. Landaal
 Mrs. Virginia R. Landaal
 Dr. Jamile T. Lawand & Mr. Barry J. Carr+Δ
 Mrs. Linda LeMieux
 Mr. Max Lepler & Mr. Rex L. Dotson
 Prosecutor David & Therese Leyton
 Mr. & Mrs. John Lindholm
 Mr. & Mrs. Mark L. Lippincott
 Ms. Martha Lockhart*+Δ
 Ms. Jeanette R. Mansour & Mr. Joe Green
 Dr. & Mrs. Robert McMahan
 Mr. & Mrs. William H. Moeller*
 Mrs. Robert C. Morgan
 Drs. Bobby & Nita Mukkamala
 Dr. & Mrs. Kienan F. Murphy+Δ
 Edward & Elizabeth Neithercut
 Mr. & Mrs. Jay Nelson
 Mr. & Mrs. Patrick O'Sullivan
 Mr. & Mrs. Raymond J. Persia+Δ
 Mr. Randolph P. Piper & Mrs. Susan I. Stuewer+
 Mr. Robert S. Piper+
 Mr. William H. Piper
 Dr. & Mrs. Mark Plucer*+Δ
 Ms. Linda L. Pylypiw+
 Mrs. Fouad Rabiah+
 Mr. & Mrs. Michael J. Riha+Δ
 Mr. & Mrs. Jeffrey D. Rocco
 Drs. Michael & Virginia Rucks+
 Dr. & Mrs. Daniel J. Ryan+
 Mr. & Mrs. Khalil M. Saab+Δ
 Mr. & Mrs. Timothy C. Sanford+Δ
 Ms. Grayce Scholt+Δ
 Dr. & Mrs. Paul E. Schroeder+

Business Members

Business Supporter
 (\$250 annually)
 Luis A. Perez DDS MS PC*
 Piper Realty Co.

Business Sustainer
 (\$100 annually)
 Christie's, Chicago
 Christie's, New York
 Flushing Vision Clinic, P.C.
 Great Lakes Legal Team, PLC
 McFarlan Home
 Midland Center for the Arts
 Personal Computing Solutions
 Superior Travel Service
 The Torch Bar & Grill
 Vogt's Flowers
 Woodhaven Senior Community+
 Yeo & Yeo, P.C., CPA

Individual Members

Donor
 (\$500 annually)
 Mr. & Mrs. Kelly B. Beardslee+Δ
 Mr. & Mrs. Tom B. Doherty+
 Mr. Dallas Dort & Mrs. Sharon A. Peterson Dort
 Mr. & Mrs. Richard Fortier*
 Mrs. Donna A. Graham

Ms. Diane Suttles
 Dr. & Mrs. Thomas Svitkovich
 Ms. Roberta Sweetman+
 Dr. & Mrs. Johannes Tall
 Ms. Ernelle Taylor+Δ
 Mr. & Mrs. Henry C. Thoma, Jr.
 Mr. & Mrs. Michael D. Thompson
 Mrs. Beverly G. Thompson
 Mrs. Ruth P. Thrash
 Mr. & Mrs. Roger Timm*+Δ
 Mrs. Mary Ann Tremaine
 Mr. & Mrs. Robert Turley+Δ
 Mr. & Ms. Earl Turner+
 Ms. Suzanne Turpen
 Ms. Ann Marie VanDuyne
 Mr. & Mrs. Robert J. VanDuyne+Δ
 Mr. Ted Vansteyn & Ms. Emily Feuerherm
 Mr. & Mrs. William Vredevoogd
 Ms. Jane C. Wagner
 Mr. & Mrs. Frederick S. Waller
 Mr. & Mrs. Dayne Walling
 Mr. Harry Walters
 Ms. Alice Ward*
 Ms. Carolyn Warren
 Mr. & Mrs. Robert Warren
 Mr. & Mrs. Jim Wascha
 Mr. & Mrs. Lynn E. Webb+Δ
 Dr. & Mrs. Robert M. Weber
 Mr. & Mrs. Richard C. Weiermiller
 Dr. & Mrs. Stuart B. Weiner
 Prof. & Mrs. Mitchell S. Weiss
 Mrs. Mary E. Whaley & Mr. Rick Kroeger
 Mrs. Marcia Whaley
 Dr. & Mrs. Charles V. White+Δ
 Mr. & Mrs. Tom Wickham*Δ
 Dr. & Mrs. James Williams+
 Mrs. Janet Williamson*+
 Mr. & Mrs. Mike Wilson*+Δ
 Ms. Ruth Winter & Mr. Tom Thibault+
 Mr. & Mrs. William J. WishartΔ
 Jerome & Judith Wolbert
 Mr. Dale F. Wolfgram+
 Mr. & Mrs. Keith Wolfgram+Δ
 Mr. & Mrs. Robert A. Wood
 Ms. Marta Wyngaard-Tavakoli
 Mr. & Mrs. Douglas Wywicki
 Ms. Catherine Yeotis+

Judge & Mrs. Thomas C. Yeotis+Δ
 Mr. & Mrs. Dennis W. Younger+Δ
 Mr. & Mrs. Vincent Zamora
 Ms. Trish M. Zito-Smith+Δ
 Mr. & Mrs. Marvin Zmudczynski*
 Dr. & Mrs. George Zureikat
Family
(\$50 annually)
 Mr. & Mrs. Robert A. Ackerman+
 Ms. Jennifer M. Acree
 Mr. & Mrs. John Adams
 Ms. Velma Adams
 Mrs. Wendy Adkins
 Mr. & Mrs. Mark Alexander
 Rex Alexander, Rochelle & Jillian Molyneaux
 Mrs. Kimberley J. Alexander+
 Mr. & Mrs. Ricardo Alfaro
 Mr. & Mrs. Fred Allen
 Ms. Valarie Allen*
 Mr. & Mrs. Chad Amoss
 Ms. Ami Anderson
 Ms. Christine Anderson
 Mr. Erik Anderson
 Dr. Jami Anderson & Family
 Ms. Wilma Anderson
 Mr. & Mrs. Andruszko & Family
 Mr. & Mrs. Matt Appleton
 Dr. Joy Arbor
 Mrs. Michelle Armbrust
 Mrs. Joellen Arvoy
 Mrs. Angela Ascencio-Mindlin & Kris Mindlin
 Ms. Mary K. Atkinson
 Dr. & Mrs. Patrick Atkinson
 Ms. Ann Auglim & Ms. Sara Griffin
 Mr. & Mrs. John Augustine
 Mr. & Mrs. Matthew Ault
 Mr. & Mrs. Kenneth G. Aurand+
 Mr. & Mrs. Edwin Bradley+
 Ms. Karen E. Bailey
 Ms. Sarah Bajek & Mr. Khris Perry
 Mr. & Mrs. Calvin Baker
 Mr. William Baker & Mrs. Diane Baker-Williams
 Mrs. Teresa Barnett
 Ms. Kimberly Beach
 Mrs. Patricia Beauvais
 Mr. & Mrs. Nick Beccia
 Ms. Lucy Belcher

Mr. & Mrs. Nick Belill
 Mr. Ryan Bell
 Mrs. Melissa Bellinger
 Mrs. Tammy Benedict
 Mrs. Theresa Benner
 Mr. Tim Bennett*
 Mrs. Brenda Bessolo
 Ms. Edna R. Bick & Mr. John Helson*+
 Ms. Stacie Bielec
 Mr. & Mrs. Patrick Bingaman
 Ms. Julie Bird
 Dr. & Mrs. Paul Blanchard
 Mrs. Angela Blondin
 Mrs. Rachel Bock & Mr. Michael Bock
 Mrs. Sherry Bohms
 Mrs. Joyce E. Bolo
 Mr. & Mrs. Dean Bonesteel
 Mr. & Mrs. Bob BooherΔ
 Mrs. Catherine Boss
 Ms. Julie Bowers
 Mr. & Mrs. Dennis Bowles+Δ
 Ms. Susan Lee Boyd
 Mr. & Mrs. David S. Boze
 Mr. & Mrs. Robert Bradley
 Ms. Aretha Bradley
 Ms. Lea Brandon & Mr. Joshua Brandon
 Mr. & Mrs. Scott J. Breslin
 Mr. & Mrs. John C. Briggs+
 Mr. & Mrs. Kelly J. Brisbin
 Mr. & Mrs. Waldo Bronson*
 Mr. & Mrs. Michael J. Brooks+
 Mrs. Meagan Brown
 Ms. Teleah Brown
 Ms. Betty F. BrownΔ
 Mr. & Mrs. Nate Bruce*+
 Mr. George Brueck & Ms. Barbara Brownlee
 Mr. & Mrs. Douglas I. Buck II
 Mrs. Anne Buckman
 Mrs. Jodi Bufford
 Mrs. Monica Burel
 Mrs. Rosemary Burgess
 Mrs. Cynthia Burget
 Mr. & Mrs. Michael Burkhardt
 Dr. Tim Byrd & Dr. Sara Byrd
 Mr. & Mrs. Daniel Cady+
 Mr. & Mrs. John Campbell

Mrs. Linda Cannon
 Mr. & Mrs. Paul Carroll
 Mrs. Kecia Carter
 Ms. Sally Case*
 Mr. & Mrs. Gary Casey*
 Mr. & Mrs. Gilbert Cass+Δ
 Mr. & Mrs. Eric Cassabon
 Mr. Terry Castor
 Mr. & Mrs. Michael Chaffee+Δ
 Mrs. Aisha Changezi & Family
 Mr. & Mrs. James Cheek
 Mrs. Diana Cholakova & Mr. Boyan Dimitrov
 Mr. & Mrs. John M. Christena*+
 Mr. Bill Christensen
 Mrs. Karen Jean Christian
 Mr. & Mrs. David Collins
 Mr. & Mrs. Joseph Combi
 Mr. Connor Corcoran & Ms. Sarah Halabicky
 Mrs. Aundrea Corey*
 Mr. Joseph Coriaty
 Dr. & Mrs. Marshall Cossman
 Dr. & Mrs. Clifford J. Cox II
 Mr. & Mrs. David S. Cox*
 Ms. Megan Craig
 Mrs. Mary J. Crawford
 Ms. Mattie Crockett
 Mrs. Cynthia M. Cromwell
 Mrs. Paula Crossnoe
 Mr. Joe Curtis
 Mr. & Mrs. Harry Cybulski
 Miss Delanna D. Dale
 Mr. & Mrs. Peter Daunt
 Mrs. Sharon Davis
 Mrs. Barbara Davis
 Ms. Betty F. BrownΔ
 Mr. & Mrs. Delmar D. Davis
 Mr. Scott Davis & Mr. Brad Westlake
 Mrs. Sharon Davis
 Ms. Yvette DeGroat
 Mrs. Amy Deloney
 Ms. Sheila Denny-Fong*
 Mr. & Mrs. Russ Deutsch
 Ms. Carol Dickinson & Mr. Alvin Miller
 Mrs. Cheri Dickinson
 Mrs. Elizabeth Dix+
 Ms. Jean Douglas & Family+

Mr. & Mrs. Dennis Doyle*
 Mrs. Michelle Drury
 Dr. Kathleen Dunham
 Ms. Sarah Dunne & Mr. Patrick Mullane*
 Mr. John Eagan*
 Mr. & Mrs. Wayne Edgerton
 Dr. Myriam Edwards-Miller & Dr. Joseph E. Miller
 Mrs. Connie Edwards
 Carol Egloff+Δ
 Ms. Wanda Eichler
 Dr. & Mrs. Kevin Eikley & Family
 Mr. Jim Erwin & Ms. Diane Root
 David & Jill Esau
 Ms. Rebecca Evans
 Ms. Rita Fagan & Family
 Mr. & Mrs. Dane Farner
 Mr. & Mrs. Daniel Fiedor*
 Mr. & Mrs. Jeremy Fisher
 Mr. Rodney Fleming
 Ms. Andrea Zlatec Floden+Δ
 Mr. & Mrs. Christopher J. Flores
 Ms. Pam Folts & Ms. Lisa Land*
 Mr. Richard W. Fortner+Δ
 Mr. & Mrs. Tom Fox
 Mrs. Stephanie Frank
 Mr. & Mrs. Kent Greenfelder
 Ms. Laura Friesen
 Mr. & Mrs. Paul Gallinat, Jr.
 Mr. & Mrs. Jeff Garrett
 Mr. & Mrs. Troy Garrison-Hazel
 Mr. & Mrs. James Gaver+
 Mrs. Deborah Gillespie
 Mr. & Mrs. Paul Gillman
 Mrs. Heather Gillmer
 Ms. Kerri Gilmore
 Mrs. Kimberly Gilmore
 Mr. & Mrs. Roger Gilmour+
 Mr. & Mrs. Jonathan Glab+Δ
 Mr. & Mrs. Bill Glowney
 Mr. & Mrs. Michael Goff
 Mr. & Mrs. Richard Goforth
 Ms. Ronda W. Goldfarb
 Ms. Jennifer Golombisky
 Mr. David Gomon & Ms. Elizabeth Gomon+
 Mr. & Mrs. Lee Gonzales
 Mr. & Mrs. Tim Good
 Mrs. Ashley Goodman

Ms. Pamela Goodwin
 Mr. & Mrs. Michael Goulet
 Mr. & Mrs. Chris Goyette
 Ms. Sarah Gordon Grandy+
 Mrs. Beverly Graner
 Mrs. Marilyn Gregor*
 Mr. M. Gronauer Family+
 Mr. John Grzeck & Ms. Laura McLone-Grzeck
 Mrs. Heather Grzymkowski
 Ms. Carole Gutteridge
 Ms. Michelle Haack & Mr. Jared Haack
 Mr. & Mrs. Lawrence Hackett
 Mrs. Susan Hagen
 Mrs. Katie Haggerty
 Ms. Nancy Hagle-Duffy
 Mr. Toby Hall & Ms. Vivian Heidtman
 Mrs. Sarah Hall & Family
 Mr. & Mrs. James Hallem+
 Dr. & Mrs. Franklin W. HamiltonΔ
 Mr. & Mrs. Andrew Hancock
 Mrs. Jillian Handa
 Mr. & Mrs. Carl Hansen+
 Ms. Janice T. Harden
 Ms. Pamela Harris
 Mrs. Danielle Hawkins
 Mr. & Mrs. Robert Janson+
 Ms. Nelda Hebert
 Ms. Cynthia Hendrix
 Mr. & Mrs. Kenneth R. Henley
 Mrs. Donna Henley
 Mr. & Mrs. John Henry
 Mr. & Mrs. Carlos Hernandez
 Mrs. Jamie Hershberger
 Dawn Hibbard, Ray Rust & Family+Δ
 Mrs. Crystal Hill
 Mrs. Kimberly Hill+
 Mr. & Mrs. Jeffrey J. Himelhoch
 Kazuko Hiramatsu
 Ms. Alana S. Hoff
 Mr. Karl Hoff
 Mrs. Rachel Holland
 Mrs. Kimberly Honnen
 Ms. Valorie Horton
 Mr. & Ms. Mark Horton
 Mr. & Mrs. James Hotary+
 Mr. & Mrs. Robert Houbeck

Mr. James Houghtaling
 Mr. & Mrs. Gerald House
 Ms. Katie Hovanec
 Ms. Ann Howard
 Mrs. Susan Howes*
 Mr. K. Stiles Howland & Ms. Margaret O'Riley
 Ms. Helen R. Hoyt
 Mrs. Courtney Hubbs
 Mrs. C. Hudson
 Ms. Megan Hudson
 Mr. & Mrs. Clifford Hughes*
 Mrs. Lisa Hughes
 Ms. Jilianna Hukill & Family
 Ms. Lauren Hunter
 Mr. & Mrs. Josh Hurand
 Ms. Sara Hurand & Mr. Elie Weiss
 Ms. Mary Kay Hurren*
 Mr. Steven Hurt+Δ
 Dr. & Mrs. Huseyin R. Hiziroglu+Δ
 Mrs. Veronica Husocki
 Mr. & Mrs. Robert E. Iden
 Mrs. Becky Illian
 Dr. Susumu Inoue
 Dr. Asif Ishaque & Dr. Laura Carravallah
 Mr. & Mrs. Andrew Isola+Δ
 Mrs. Gina Jacoby
 Mr. & Mrs. Robert Janson+
 Mr. & Mrs. Mitchell Jarosz*+
 Mr. & Mrs. James Jarvis
 Mr. Clarence Jennings, Jr.
 Mrs. Anna Johnson
 Mr. & Mrs. David Johnson
 Dr. Gary K. Johnson
 Ms. Jimmie Johnson
 Dr. & Mrs. Scott Johnson*
 Mr. Sam Jones & Dr. Beverly Jones*
 Mr. & Mrs. Myrton N. Jones
 Ms. Joelle Jordan
 Ms. Connie Kale & Ms. Christie Healy
 Mr. Michael Karayanis Family
 Mr. & Mrs. Jerry Karle
 Mr. & Mrs. Franklin H. Kasle
 Mr. & Mrs. Andrew Keast
 Mrs. Kim Keisel & Mr. Scott Keisel
 Aaron & Emily Kelley*+Δ
 Ms. Nanette Kelly & Family

Mr. Eric Kennedy
 Mr. & Mrs. Michael Kent
 Ms. Judy Kerspilo
 Ms. Jacqueline Kildee
 Mr. & Mrs. David Kimber
 Mr. Richard L. King, Jr.
 Mr. & Mrs. Melvin Kipp
 Dr. Michael J. Kirby
 Mr. & Mrs. Walter Knoblock
 Mr. Benjamin Koch & Ms. Kristin Jones
 Mr. & Mrs. Robert Koch
 Mr. & Mrs. Rudolph N. Kohn
 Ms. Rita Kotzian
 Ms. Angi Ostrom Kranz
 Mr. & Mrs. Peter McCreey
 Mr. & Mrs. Thomas McDonough+
 Timothy M. Morgan+
 Mr. & Mrs. James Kummer*
 Ms. Natalia LaFuente*
 Mr. Miles Lam*
 Ms. Kerry Landon
 Mrs. Jennifer Lane & Family
 Mrs. Michelle Lang & Family
 Ms. Shannon Langley
 Ms. JoEllen Larzelere+Δ
 Mr. & Mrs. Gary Latimore*
 Mr. & Mrs. Lee LaVictoire*+
 Ms. Sandra Law
 Dr. Valerie A. Leeds*
 Mrs. Ellen Lerner-Hardin
 Mrs. Beverly Lewis
 Mr. & Mrs. Brian Lewis
 Ms. Nicole Lewis
 Ms. Patricia Lewis
 Mrs. Theresa Lewis
 Dr. & Mrs. Handy Lindsey
 Mrs. Kristina Lipe
 Mr. Kenneth Litwin
 Dr. & Mrs. Edward T. Lock
 Ms. Laura Locke
 Tiffany & Bob Lovett
 Mr. & Mrs. Ben Luethy
 Mr. & Mrs. Richard Lutgens
 Mr. Alan Lynch & Dr. Julie Lynch+
 Mr. & Mrs. Sean MacIntyre
 Ms. Crystel Mackey
 Mr. & Mrs. Keith Magnuson
 Fr. Steve MakranyiΔ
 Mrs. Carolyn Mansfield

Mrs. Mary Markel*
 Mrs. Susan Marr
 Mr. Michael Martin & Mr. Bryan Paris
 Eric Marx & Colette Essa+
 Ms. Paula J. Maser
 Mr. & Mrs. Michael A. Mason+
 Mr. & Mrs. Mark MastersΔ
 Mr. & Mrs. Paul Mattern
 Mrs. Shelby D. Mayberry
 Mrs. Amanda McAbee
 Mr. Robert McAllister & Ms. Bobbie Chamberlin & Diamond*+
 Mr. & Mrs. David McAuliffe
 Mr. & Mrs. Judd McCullough
 Mr. & Mrs. Peter McCreey
 Mr. & Mrs. Thomas McDonough+
 Dr. & Mrs. Jack McGaugh*
 Ms. Gwyn B. McKay
 Mr. Raymond A. McKee & Ms. Shirley Eason*
 Mr. & Mrs. Charles R. McKone
 Mrs. Jane McMillan
 Miss Alicyn McNally*
 Ms. Connie Lynne McNeal
 Mr. & Mrs. Marty Meissner
 Mrs. Linda Merlo
 Ms. Jennifer Mervyn
 Mr. & Mrs. James MiganΔ
 Mr. & Mrs. James Mikulski
 Dr. Joseph E. Miller
 Mr. & Mrs. Mark Miller
 Mr. & Mrs. Matthew Miller
 Mr. & Mrs. Patrick Miller
 Mr. Stephen Miller & Ms. Jeana Rossie-Miller*
 Mr. Jeff Mills+Δ
 Ms. Almeta Milow
 Mrs. Tiffany Minder
 Ms. Teresa Mitoraj
 Dr. & Mrs. Behrouz Moghtassed
 Mr. & Mrs. Robert Monroe & Family
 Mr. & Mrs. Steward A. Moore+Δ
 Ms. Kerry Moore
 Mrs. Laura Mortimer
 John & Pat MuchaΔ
 Mr. & Mrs. Gary Mulholland
 Mr. & Mrs. David Mulligan
 Mr. & Mrs. Rick Murphy
 Mrs. Linda Murphy

Ms. Sandra L. Murphy*
 Mrs. Amanda Myers & Mr. Greg Myers
 Dr. Rhonda Myers+
 Mr. Lauren Myslicki & Mrs. Susan Gehl
 Mrs. Holly Nachtigal & Family
 Mr. Cecil Neighbarger
 Mr. & Mrs. Jesse Nemecek
 Mr. & Mrs. Ken Nemitz
 Mr. & Mrs. Daniel Neu & Family
 Mr. & Mrs. Andy Nicklas
 Mr. & Mrs. Charles D. Nielsen+
 Mr. & Mrs. Jonathan Nigrine & Family
 Mr. Eric Norman & Ms. Joanna Rodriguez
 Mrs. Lynn North
 MacKenzie O'Hara+Δ
 Mr. Shannon O'Hara & Gillian & MacKenzie O'Hara
 Ms. Patricia O'Neal
 Mr. & Mrs. Ed Ogul
 Rev. Claudene Oliva & Ms. Karen Genter*
 Ms. Lizabeth Orr
 Ms. Jacquie Osborn & Mr. Jim Osborn
 Mr. & Mrs. Peter Ott
 Mr. Thomas Owen
 Mrs. Ashley Owens
 Ms. Gwendolyn V. Pace
 Ms. Corinne C. Pacheco
 Ms. Lisa Padilla
 Mr. Everette Parker & Ms. Kathy Parker
 Miss Sarah Parker
 Mrs. Tannith L. Parker
 Mr. & Mrs. Lee Parks
 Mr. & Mrs. Tim Parrott
 Mr. & Mrs. Patty Pattee & Mr. Mark Pattee
 Mr. Ben Pauli & Ms. Vivian Kao
 Miss Joanie Pavkovich
 Ms. Natalie Pelavin
 Ms. Marva Perkins
 Ms. Diana Perris
 Mrs. Daniell Perroud
 Mr. & Mrs. Jeremy Peters
 Ms. LaPhyllis Peterson

Mr. & Mrs. Roger L. PetersonΔ
Mrs. Pam Pfeiffer
Mr. & Mrs. Gary Philpott+Δ
Mr. & Mrs. Mark Phipps*
Mr. Wayne Pickvet & Mr. Bruce A. Barrett
Mrs. Charlene Pierson
Ms. Pamela J. Pinti
Mrs. Kristen Poploskie
Mr. & Mrs. John Popovits+
Mrs. Autumn Porter
Mr. & Mrs. Ron Pratt
Mr. & Mrs. Mark D. Prevett
Ms. Cherie Preville
Mrs. Kelly Price
Mr. Timothy Purman*+Δ
Ms. Christine Pyles
Mrs. Shalonda J. Pyles
Dr. Paul J. Racine
Ms. Bernadette Rainear
Mrs. Christine Rainwater
Ms. Shanna Ranch
Ms. Jennie Rauch
Mr. Roger Ray & Mrs. Lois Farley-Ray
Mrs. Debi Raymond
Ms. Carol Raznik*
Mrs. Shelbi Redmond
Mr. & Mrs. Richard Reed
Mr. & Mrs. Brian Renaud*
Mrs. Amber Rich
Mr. & Mrs. Josh Richard
Mrs. Jacqueline Richardson
Ms. Bethany Riggs
Mr. & Mrs. Stephen Riselay
Mrs. Vanessa Robar
Mr. & Mrs. Nicholas Robinson
Ms. Suzanne Rock & Mr. James Uicker
Mr. & Mrs. Josup Rodriguez
Mr. & Mrs. Luis Rodriguez
Mr. & Mrs. Alan Rohde
Ms. Jennifer Rohde
Mr. & Mrs. Robert Romanowski+
Dr. Elizabeth A. Rose & Family
Mrs. Kim Rouvelin
Mr. & Mrs. Paul Rozycki+Δ
Mr. Ira A. Rutherford+
Mr. Allen Salyer*+Δ
Ms. Sunni Samuels-Larry

Mr. & Mrs. Frank A. Sanders
Mrs. Judy Sanford
Ms. Kathy Saunders & Ms. Sandra Hodges
Mr. & Mrs. Dan Savoie
The Rev. & Mrs. Dan Scheid
Dr. Kathryn Schellenberg
Mrs. Deanna Schlaud
Mrs. Yvonne Schneider
Ms. Kim Seifferly
Mr. & Mrs. Greg Semrau
Mr. & Mrs. Mark Seymour
Ms. Martha Shaver
Mrs. Patricia A. Sheehy
Mr. & Mrs. Jason Shellhaas*
Mrs. Becky Shipp
Mrs. Shawna Shorkey
Mrs. Helen Shuttleworth
Mr. Scott Siefker
Ms. Linda Simmons & Ms. Jordyn Thomas
Mr. John J. Mrozik & Ms. Heather Sisto+
Mrs. Theresa Skene
Mrs. Marie Slater
Mr. & Mrs. Daniel Smith+
Mrs. Germaine D. Smith
Mr. & Mrs. Ivan Smith
Mr. & Mrs. Reginald Smith
Mr. & Mrs. Worley Smith+
Dr. & Mrs. Thomas Spademan
Mrs. Marcy Speaks
Mr. & Ms. Carl Spradlin & Family
Mr. Michael Sprague & Dr. Janet Sprague
Ms. Tina Springer
Mr. & Mrs. Martin Stefan*
Ms. Sherri Stephens
Mr. & Mrs. Ronald C. Stewart
Mr. & Mrs. David Stickel
Mr. Jeff Stoney*
Mr. & Mrs. John Straw
Mr. & Mrs. Paul G. Streby+
Mr. Eric Strommer
Mr. & Mrs. Robert Sullivan
Mrs. Jean Sutherland
Mr. & Mrs. Douglas C. Swanson
Mr. Peter Switzer
Mrs. Ashley Swords
Mrs. Matilda Szaroletta & Mr. Howard Szaroletta*

Mr. & Mrs. David Taylor
Dr. David Taylor
Dr. & Mrs. Maxwell F. Taylor II+
Ms. Constance Terry-Morris
Ms. Sandra Thames
Mr. & Mrs. F. William Thewalt*+
Mr. & Mrs. Nicholas Thomas
Mr. Eddie Thomas
Dawn, Jim & Darby Thomason
Ms. Diane Thompson
Anton Thornquist
Ms. Anh Tran
Mr. & Mrs. Bruce Trevithick+
Dr. & Mrs. Allen F. Turcke
Mrs. Lynn Turner
Mr. William C. Tynes
Mrs. Cheryl Ulicny
Ms. Gussie Ulmer
Mrs. Amie Urbanke
Mrs. Theresa VanSteenburg
Mrs. Amy Zagata
Dr. Kerry Zubke

Dual

(\$40 annually)

Mr. William V. Abendschien
Mr. & Mrs. T. C. Alarie*
Ms. Patricia Alexander+
Ms. Lynn K. Allen & Mr. Robert Cox+
Ms. Marilyn M. AlveyΔ
Mrs. Sarah Andresen & Ms. Catherine Andresen+Δ
Ms. Carol Andrews-Goyt & Mr. Terry R. Goyt
Mr. Alfred Arnold & Mrs. Dolores M. Roat-Arnold
Mr. & Mrs. Robert Aurand
Mr. Kevin Avery & Mrs. Angela Brooks-Avery
Mr. John Bach & Ms. Mary Alice O'Malley+
Mr. Bill Bader
Mr. & Mrs. John Baker
Mr. Wayne Barber & Mr. Rich Fitz
Mrs. Barbara Barrell*
Ms. Alissa Barrett & Ms. Caryn Snuske
Gary & Maureen Bates+
Mr. & Mrs. A. David Baumhart IIIΔ
Mr. & Mrs. Fred Bearman+Δ

Mr. & Mrs. Richard Beauchamp
Dr. & Mrs. Henry Beckmeyer+Δ
Mr. & Mrs. Donald L. Bell
Mr. & Mrs. Bob Bennett+Δ
Ms. Dawn M. Bentley*+
Mr. & Mrs. Martin Bernstein
Mr. & Mrs. Aaron S. Bivins
Ms. Linda Bjaland & Ms. Lila Bjaland*
Mr. & Mrs. Richard Blakeley
Mr. & Mrs. John Boone+
Mr. & Mrs. Rickey Booth
Ms. Betsy Boyd+
Mr. & Mrs. John A. Brancheau
Mr. & Mrs. Carl Brown+Δ
Rev. & Mrs. Kendall H. Brown
Dr. Loretta Brown & Mr. Robert Brown
Ms. Pat Buerkel & Ms. Tammy Williams+Δ
Mr. & Mrs. Samuel Burdick
Mr. & Mrs. Lary Burk
Mr. & Mrs. Michael Burkley+
Ms. Jennifer Burnett & Mr. Sean Siebigteroth+
Mr. & Mrs. Nick A. Calandro, Jr.
Ms. Ana M. Calderin+Δ
Mr. & Mrs. Richard J. Caloia
Mrs. Diana Carr
Mr. Wade Carver & Ms. Heather Meier+
Mr. & Ms. Gary Casey
Mr. & Mrs. Tom Cheek+
Mr. John D. Cherry & Ms. Teresa
Ms. Betty Chessin & Ms. Wendy Chessin
Mr. James R. Chintyan+Δ
Ms. Abigail I. Chou+
Ms. Sarah Christensen
Mr. & Mrs. Phil Christensen
Mr. & Mrs. John Clothier
Mr. & Mrs. David Coburn+
Ms. Rachel Coffey & Ms. Angela Thompson
Rob & Kathy CojeenΔ
Mr. & Mrs. Bruce T. Colasanti
Mr. & Mrs. Sylvester Collins+
Virgil & Sheryl Cope+
Mr. & Mrs. Mark Corrigan+
Mr. & Mrs. Gordon Crandell

Ms. Christine Cress
Mr. & Mrs. Ron Crichton
Mr. Gale Crooks*
Dr. & Mrs. Ronald Crow
Mr. & Mrs. David Curtis
Mr. Edwin D. Custer & Mr. Andrew Custer*
Mr. Robert L. Daly+
Mr. & Mrs. Skip Davis
Mr. & Mrs. Stu DavisΔ
C. Debusschere
Ms. Claudia DeMonte & Mr. Ed McGowin
Ms. Rita Mary DesArmier+
Ms. Laurie Dexter & Ms. Patricia WilsonΔ
Ms. Shelia Dirrim & Mrs. Bonnie M. Griffin+
Mr. & Mrs. Bruce Dobras
Dr. Deb Doherty*Δ
Mr. Scott Dolan*
Mr. & Mrs. John Dumas
Mr. Dennis Dunlavy
Ms. Sarah Dunne & Mr. Patrick Mullane
Mr. & Mrs. Paul Easter
Mrs. Brenda Eisele
Murray & Sharon Eisen+Δ
Ms. Marcia L. Elbert*+
Mrs. Holly Elrod*
Mr. & Mrs. Travis Emmons
Mr. & Mrs. Joseph A. Eufinger
Kerry & Robin Evans+
Ms. Mary S. Felix*+Δ
Mr. & Mrs. Jack Feuerstein+Δ
Mr. & Mrs. Randle Finley
Mr. & Mrs. Peter Florine
Mr. & Mrs. Richard FoorΔ
Lorretta Davis & Harold Ford
Mr. & Mrs. James P. Ford+
Ms. Suzanne French & Mr. Dennis Lenz
Dr. Donna Fry & Dr. Eric Freedman+
Mr. & Mrs. Mark Funk
Ms. Polly Gaitskill
Mr. Dallas Galarno
Mrs. Julie Ganfield
Ms. Jane Garside
Mr. & Mrs. Murray Kleinert
Dr. & Mrs. Timothy H. Knecht+
Ms. Camille Koger & Mr. Kyle McCree

Mr. & Mrs. Mike Gorris
Villacorta Grandez
Mrs. Elaine M. Graves
Ms. Michelle Green
Mr. & Mrs. Mark Guith
Mr. & Mrs. Wayne Gustafson
Ms. Deb Gustafson & Ms. Sue Weston*
Mr. Fred Hall & Ms. Mary Boyer+
Mr. & Mrs. Anthony A. Hanak+Δ
Mark & Rebecca Hanner
Mr. & Mrs. Donald E. Harbin
Mr. Charles Hardaker & Ms. Belinda Esterline
David & Donna Hart+
Mr. & Mrs. Edward G. Henneke+
Mr. & Mrs. Robert Henshaw
Mr. & Mrs. Tom Hicks
Mr. & Mrs. Jim Hill
Mrs. Mary Jo Hobart-Parks
Mr. & Mrs. Gurdon Hobson
Ms. Barbara Holmer & Mr. Robert Stanisch
Mrs. Joan M. Horcha & Mr. Jerry J. Haddad
Mr. & Mrs. Ronald M. Horton+Δ
Mr. Jeff House & Mr. Jonathan Shettler
Bridget & George Hughes
Ms. Mary Kay Hurren
Mr. Thom Hutchison & Mrs. Gail D. Hutchison
Mr. & Mrs. Paul Ivan
Mr. & Mrs. Philip Jackson+Δ
Mr. & Mrs. Tim Jackson
Mr. & Mrs. Steven A. Jadwin+
Mr. Kenneth Johnson & Mrs. Sheila Kelly
Mr. & Mrs. Zelton Johnson
Dr. David M. Johnston+
Mr. & Mrs. Keith Johnston*
Mr. & Mrs. Fred Junger
Mr. Thomas Kane
Mr. & Mrs. William A. Karas II
Ms. Shelly Kaye & Mr. Armando Fernandez
Mr. & Mrs. Dennis Keeney
Mr. & Mrs. Murray Kleinert
Dr. & Mrs. Stephen Morris
Ms. Camille Koger & Mr. Kyle McCree

Mr. & Mrs. Michael Koviack
Mr. & Mrs. Thomas Kudza
Mr. & Mrs. Madhu Kulkarni
Ms. Yasmin Ladha
Ms. Michelle Lankton & Ms. Ashley Lankton
Mr. & Mrs. Michael Larson
Mr. & Mrs. Mike Laux
Mr. & Mrs. Gordon Lawson+
Mr. & Mrs. George I. Liljeblad
Mr. & Mrs. Kenneth Lindebrekke
Mr. David T. Lindsey & Mrs. Jeanette Lindsey+
Mr. & Mrs. Albert Lipusch
Mr. & Mrs. Tom Lloyd
Mr. & Mrs. David Lott
Mr. & Mrs. James A. Loviscek
Mr. & Mrs. Steven Low+Δ
Mr. & Mrs. Jason Lurvey
Mr. & Mrs. Rick Lutz
Ms. Nancy MacDonald
Claudia & Richard Mach+
Mr. & Mrs. Keith Magnuson
Ms. Katherine Maitland & B. McGhan
Ms. Sandy Malnar+
Mr. & Mrs. Andrew Markell
Mr. & Mrs. Charles Marshall
Mr. & Mrs. Charles Martin+
Ms. Susan Martin & Mr. Dan McClain
Mr. & Mrs. Thomas D. Martin
Mr. Richard J. Mata & Ms. Donna Meyer*
Mr. & Mrs. Daniel Maynard+Δ
Mr. & Mrs. James McDougal
Mr. & Mrs. Peter McKenna
Mr. Richard McNally+
Mr. & Mrs. Neil McPhee
Mr. & Mrs. Ed Meier+
Ms. Pennie A. Meyers+
Ms. JoAnn Miller*
Mr. Rafael Mojica & Mrs. Yolanda Mojica
Mr. & Mrs. Andrew Molnar
Mr. & Mrs. Paul Mooradian
Mr. & Mrs. Allan Moore
Hon. & Mrs. Eugene A. Moore
Dr. & Mrs. Stephen Morris
Mr. & Mrs. Rick Murphy

Ms. Carol Naimi & Mr. Nibras J. Abboud+Δ
Ms. Paula Narde & Mrs. Louise Voll+Δ
Mr. & Mrs. Ken Nemitz+
Dr. & Mrs. Jack Nettleton+
Mr. & Ms. Tom Neuhard
Mrs. Leann Nygaard
Mrs. Nancy Odett+
Mrs. Tinsi Olds & Mr. Keith Kline
Miss Claudene Oliva & Miss Karen GenterΔ
Mr. & Mrs. Ronald Oskey
Ms. Bethany Peterson+
Mr. & Mrs. Randall Petrides
Mr. Douglas Petroni & Ms. Rosalie Buss-Petroni+
Mr. & Mrs. Michael Phillips*
Ms. Jacqueline Piechowski+
Mr. & Mrs. Thomas G. Pierson
Ms. Debra Piper+
Mr. Brian Polisky & Ms. Leslie Trout
Mr. & Mrs. Max Polzin
Mr. & Mrs. Edward J. Preville+Δ
Ms. Laurie Prevo & Ms. Tristan Prevo
Ms. Frances J. PriceΔ
Mr. & Mrs. Robert J. Pries+
Mr. Thomas Pugsley & Ms. Susan Sage
Mr. & Mrs. Martin Pylvainen
Mr. & Mrs. Robert W. Ranta+
Mr. Derek Ray & Mrs. Kelly Baty
Mr. & Mrs. Tony Ray+
Dr. & Mrs. N. N. ReddyΔ
Mr. & Mrs. Melvyn R. Rettenmund
Mr. & Mrs. Daniel Richards+
Mr. John L. Riegler, Jr.
Ms. Edith A. Robbins & Mr. Anthony Robbins+
Dr. & Mrs. Paul Roetter+
Mrs. Cheryl A. RogersΔ
Mr. & Mrs. Richard Rogers
Ms. Sally Ross
Judy Rowe & Chris Weaver
Mr. & Mrs. Brian Royce+
Mr. & Mrs. Richard J. RuhalaΔ
Dr. & Mrs. Joshua Sauvie
Ms. Linda M. Savage & Mr. Michael P. Sherry

Dr. & Mrs. Nelson Schafer+
Mr. & Mrs. Roland Schaudt
Ms. Mary Scheuer & Miss Claudia Scheuer
Mr. & Mrs. Derald Schnepp+
Mrs. Trudi Schreiber+
Ms. Kim Schurig
Ms. Marian D. Seguin*
Ms. Kathleen A. Sheehy
Dr. Richard & Rose Marie Shick+
Mr. Todd Slisher & Ms. Valerie Harrison
Mr. & Mrs. Ivan Smith*
Mr. & Mrs. Norm Stewart
Mr. & Mrs. Edward StrongΔ
Dr. & Mrs. John Sullivan+ & Mrs. Mary Ann Sullivan-
Abendschein+
Amy & Wes Sutkowski
Mr. Ken Swisher
Dr. Michael Szappan & Dr. James Maxwell
Mr. & Mrs. Jon Talarico
Ms. Jeanne C. Thick & Mr. John Nelson
Mr. & Mrs. Thomas Thompson
Mr. James Kelly & Mrs. Mary Kay Thompson-Kelly+
Mr. Don Tinson II & Ms. Annette Shaffer+Δ
Nickolena & Steven Topping
Mr. & Mrs. Paul N. Torre
George & Jean Toth
Ms. & Ms. Amy Troyer*
Mr. Luke Truesdail & Ms. Lauren Corker
Mr. & Mrs. Robert Vale+
Ms. Corrina VanHamlin+
Mr. Jose Vargas & Mrs. Dalila Sagastume
Ms. Ellen Waara*+
Rev. Tom & Mrs. Beth Wachterhauser+
Mr. & Mrs. Donald Walker
Mr. & Mrs. Douglas Walker*
Mr. & Mrs. Gerald L. Walters
Mr. & Mrs. James Waner*
Mr. & Mrs. Jon Wheeler+
Mr. & Mrs. William White
Ms. Kimberly Wilcox+Δ

Mr. & Mrs. Allan R. Wilhelm+Δ
 Mr. & Mrs. Ronald Williams
 Mr. & Mrs. Brad Winther
 Mrs. Elizabeth Wise*
 Dr. Sue Wisenberg & Ms. Donna BakerΔ
 Mr. & Mrs. Paul Woolcock
 Mr. Larry Woolson
 Mr. & Mrs. Daniel Wozniak+
 Ms. Yedan Yin & Mr. Shane Trese
 Mr. Barton M. Zachrich
 Ms. Cynthia Zack*+Δ
 Mr. Ray Zbiciak+
 Mr. Stephen Zulinski+Δ

Individual
 (\$30 annually)
 Mrs. Marylou Ackerman
 Ms. Kay Adams
 Ms. Anita Ahearn
 Ms. Denise Ahonen
 Mr. Zack Akers
 Mrs. Laura Alderman
 Ms. Judith Alexander+
 Ms. Margaret Allen
 Ms. Anna Allison
 Mrs. Catherine D. Amboy
 Ms. Anna Anderson
 Jesse Anderson
 Mrs. Jeneil M. Applegate+Δ
 Mr. Ronald Artis
 Mrs. Barbara Asa
 Ms. Frances L. Ascencio+
 Ms. Wythel Bacon
 Ms. Roseanne Bagale
 Ms. Suzette Bailey
 Mr. Chris Balog+
 Ms. Shirley Bannatyne
 Ms. Ida B. Barron
 Ms. Laura Bautell
 Ms. Susan Beal
 Mrs. Linda Bedtelyon
 Mrs. Doris Beebe+Δ
 Ms. Patricia GebhardtΔ
 Ms. Dianna Berggren+
 Mrs. Sandra Berra
 Mrs. Elizabeth A. Bickford+
 Mrs. Rosemary Bigelow
 Ms. Linda Bjaland+
 Ms. Shirley I. Blair
 Ms. Cheryl Blank

Mr. John Blankenship
 Ms. Susan P. Bloomfield
 Mrs. Mary Bluteau
 Ms. Kimberly A. Bodette
 Ms. Diane Boegner+
 Mr. Nate Boggs
 Ms. Janeen Booten
 Mrs. Connie Borrie
 Ms. Jan Bourcier
 Ms. Michelle A. Bowman
 Mrs. Patricia Boyd
 Mrs. Doris Bravender
 Mrs. Carole A. Brender+
 Ms. Marianne Brender
 Mr. Leo Brennan
 Ms. Merinda Brisbane
 Mrs. Sharon BrockΔ
 Mr. Michael J. Brooks+
 Ms. Ellen Brothers
 Mrs. Bonnie Brown
 Mrs. Kimberly Brown+Δ
 Mrs. Linda L. Brown
 Ms. Peggy Brunner+
 Ms. Joy Bublitz+
 Ms. Sharon Buchanan
 Ms. Judith A. Buffenbarger
 Mr. Donald L. Bullis
 Ms. Suzanne K. Burch+
 Ms. Mary Burdis
 Ms. Tamera Burgess+
 Mrs. Norma Burrow
 Ms. Cynthia Butcher
 Dr. Jon S. Buxton
 Ms. Martha Calhoun+
 Mrs. Beverly Calkins
 Ms. Lois CallanΔ
 Ms. Suzan Campbell
 Ms. Kathleen L. Cantley
 Ms. Julie Carr
 Mr. Victor Castro
 Kathleen S. Cauley
 Ms. Donna Champagne
 Ms. Judy Chapman
 Ms. Teresa Charette
 Ms. Patricia Chillik
 Mr. & Mrs. Elwood Chipman+
 Mrs. Avis Christie
 Mrs. Jeanne Clark
 Ms. Sally Clark
 Ms. Sandy Cleomaude

Mrs. Judith A. Clippard
 Miss Anne Cole
 Ms. Lorie Cole
 Ms. Tracy Collier-Nix
 Ms. Patricia Colthurst
 Dr. Christina R. Consiglio+Δ
 Mr. Michael E. Cooney
 Mrs. Susan CooperΔ
 Mrs. Debra L. Costello
 Miss Vera L. Crandall
 Mrs. Karen Crandell+Δ
 Mr. James E. Crawley
 Ms. Ericha Cromwell
 Ms. Gail M. Curry
 Ms. Lindsey Curtis
 Mr. Robert H. Curtis
 Mr. Edwin D. Custer
 Ms. Jackie Dale+
 Ms. Tracey Davedowski
 Mrs. Mary Lou David
 Mr. Ray Davio
 Mrs. Shawn DavisΔ
 Mr. Gary DeButts+
 Mrs. Amanda Decker
 Ms. Sharon Buchanan
 Ms. Marian DeCourval
 Mr. Larry L. Deitering
 Ms. Betty L. Dell
 Mrs. Chris DeLooze
 Ms. Crystal DempsΔ
 Miss Vanessa Dendy
 Mr. Justin Densmore
 Ms. Monique Desormeau
 Mrs. Beverly J. Dillon
 Ms. Teresa DiMaria
 Mrs. Sandra Dively
 Ms. Kathleen Dockter+Δ
 Dr. Deb Doherty+Δ
 Ms. Elizabeth Dolza
 Mrs. Beverly Dominick
 Ms. Joan E. Dowler+
 Ms. Mary Downey+
 Ms. Patricia S. Duffy
 Dr. Daniel Dulin
 Ms. Shirley Dunbar-Pumphrey+
 Ms. Michelle J. Dvorak
 Ms. Linda Dyball
 Miss Lauren Eaton
 Mrs. Lynn Elliott+
 Mrs. Eileen Ellis

Mrs. Rosemary Emerton+Δ
 Mrs. Kimberley Emmert
 Mr. George Ensinger
 Miss Shirley EppsΔ
 Ms. Ida L. Epstein+
 Ms. Nancy Epstein
 Mr. Lawrence S. Falardeau
 Mrs. Sue A. Faley
 Mrs. Debra L. Costello
 Mr. Craig Fenner
 Mrs. Sally Ferguson
 Mr. Thomas M. Firestone
 Ms. Marianna Fitzgerald
 Ms. Sally Lee Foley
 Dr. Colleen Ford
 Mr. Matt Franklin
 Ms. Laura Frey
 Mrs. Renee Fugitt
 Mr. William D. FullerΔ
 Mrs. Joyce M. Gadola+
 Mr. Richard Gaffield
 Ms. Virginia Gaffney+
 Ms. Kim Gager
 Kelly Gagoiardo
 Ms. Donna M. Gardiner
 Ms. Judi Generous+
 Mrs. Alicia Geromel
 Mrs. Chris DeLooze
 Ms. Zhanna Ghazanchyan
 Ms. Lee Giacalone
 Mr. Jason Gibbs
 Ms. Lynn Gibbs
 Mr. John A. Giolitti
 Ms. April A. Gist
 Ms. Grace Glass
 Ms. Nancy C. Goff+
 Ms. Tracy Goll
 Ms. Shelley Goodlaski
 Ms. Kerri Goodman
 Ms. Estella L. Gould
 Ms. Diane M GrangerΔ
 Ms. Cheryl Green*
 Ms. Susan Grenier
 Mrs. Anne Grevstad-Nordbrock
 Ms. Julie Griess
 Dr. Richard L. Griffin
 Ms. Melinda Grix
 Msgr. Richard Groshek+Δ
 Ms. Mary L. Grossklaus+

Mrs. Joseph Guerin
 Ms. Annie Guevara+
 Ms. Catherine Gwizdz
 Mrs. Gail Hale
 Mr. Nick Hale
 Mr. Thomas M. Haley
 Ms. Laura Hall
 Ms. Angela Hamilton
 Mrs. Donna Dodds Hamm+Δ
 Mr. Patrick Hardin+
 Mrs. Tammy Harding
 Ms. Jennifer Harris
 Mr. James L. Harrow+
 Ms. Lois Hartranft+
 Mrs. Linda Harwood
 Mr. Paul F. Hauth+
 Ms. Jean Hawkins
 Mrs. Barbara G. Hayes
 Ms. Carole D. Hecker
 Ms. Anne M. Heidel+
 Mr. Robert Hentgen
 Mrs. Lisa Hermesmeier
 Ms. Trudy Herriman
 Ms. Shelley Hershberger
 Ms. Harriett Hess
 Ms. Catherine E. Hetherington
 Ms. Lucy Hightree+
 Ms. Melissa S. Hill+
 Mr. Ramon Hill
 Ms. Donna Hines
 Mrs. Gloria A. Hines
 Mrs. Lois D. Hodges+
 Ms. Dora Hoelscher
 Ms. Sandy Hofacker+
 Mr. Keith F. Holt
 Mrs. Linda M. Hoover
 Ms. Nancy C. Goff+
 Mr. Sidney Horton Jr.
 Mr. Michael Horvat+Δ
 Dr. John A. Howland
 Mrs. Susan Hungerford
 Mrs. Mary Ittigson
 Mr. Steven Izzo+
 Ms. Kathy Jackson
 Ms. Nancy Jackson
 Ms. Vickie Jackson
 Miss Esther M. Jacob+
 Ms. Mary Jacobs
 Ms. Julie A. Jacot
 Mrs. Jackie Jakeway

Mr. Jacolbi Jarrett
 Mrs. Linda Jaworski
 Ms. Cathryn Jeffers-Goodwine
 Ms. Connie Jennings+Δ
 Mrs. Rita MacGregor Jeric
 Mr. Robert V. Jewell
 Mr. Kristopher Johns+
 Mrs. Elaine Johnson
 Mrs. Laurie A. Johnson
 Mr. Richard G. Johnson+
 Ms. Joan Painter Jones
 Mrs. Kimberly Justice
 Ms. Mary Kachman
 Mrs. Kristine Kaiser
 Ms. Tasia Kalemis
 Ms. Yu Ping Kao
 Ms. Nedra Keahl
 Mrs. Chloe Keast*+
 Ms. Jane Kelly
 Ms. Susan KellyΔ
 Mr. John Kennedy
 Mrs. Joan D. Kenville
 Mrs. Rachel Kerr
 Ms. Carroll Kinkade
 Mrs. Nancy Kirby
 Mr. Stephen Kober
 Mr. Sergio Korth
 Mrs. Lucy Kovalcik
 Ms. Rosemary A. Kowalske
 Mr. George Kralosky
 Miss Sheryl Kreiner
 Ms. Trudy Krueger
 Mr. Tracy Krumm+
 Ms. Ruth Kunka
 Mr. Lawrence LaFountain
 Mrs. Carissa Lammy
 Ms. Doris Y. Landen
 Mr. John Lanser
 Mrs. Spencer Kelly Lanyi+
 Mrs. Marjorie J. Larsen+
 Ms. Dorothy Latchana
 Mrs. Sarah Lathangue
 Ms. Marie Lauer
 Ms. Nancy LaVigne
 Ms. Betty Leavitt+
 Mr. James T. Legacy
 Mrs. Janie Legleitner
 Ms. Kay Ella Lenneth
 Ms. Jennifer Lesh
 Mrs. Suzanne LewisΔ

Ms. Diane Lien+
 Ms. Kathy Liggett
 Mrs. Yvonne Liggett
 Mr. Richard Link
 Mr. Tom Lipinski
 Ms. Teresa A. LittlejohnΔ
 Ms. Sue Lockard
 Ms. Melody Lumsden
 Ms. Kathy Lundquist+
 Mrs. Janet A. Lutton
 Mr. Doug Lynn
 Mrs. Diane Macksood
 Ms. Kathleen MacMillan
 Ms. Suzanne MacWilliams+
 Ms. Giovannina Maio*Δ
 Ms. Marion K. Mann+Δ
 Ms. Cynthia Mann
 Dr. Pamela Marin
 Ms. Marjorie Markon+
 Ms. Kay Marsh
 Ms. Lucille M. Martel+Δ
 Ms. Meghan Martin
 Mrs. Alexis Massimino
 Ms. Marcia K. Mathews
 Ms. Sue Matlock
 Ms. Nancy Matson
 Mrs. Annette L. Mattarella
 Ms. Rosellen McAlearΔ
 Mr. John T. McAlear
 Ms. Katherine McAuliffe
 Mrs. Beverly McCann
 Mr. Keith McCombs
 Mr. Brian McConnaughy+
 Ms. Susan McCormack
 Mr. William K. McDonald+
 Mr. William K. McDonald+
 Ms. Shanna McDonough
 Mrs. Mary Grace McFarlane
 Mr. Philip J. McKeachie
 Ms. Kim McKerracher
 Ms. Rebecca McLogan
 Ms. Maureen McMahan
 Mrs. Cheryl McPherson
 Ms. Shelly R. Meisel
 Mr. Herb Merrell+
 Mr. Gary L. Messenger+Δ
 Ms. Nancy Meszaros
 Ms. Jill Michelle
 Mrs. Amanda Miller
 Ms. Junko Miller+

Ms. Kareyna Miller
 Mrs. Teri Miller
 Mr. Jack D. Minore+
 Mrs. Patricia Minshall
 Ms. Barbara Mirsky
 Mrs. Donna Misener
 Mr. Donovan Miske+
 Mr. John R. Mittelstadt
 Ms. Erin Mohrman
 Mrs. Annamarie Mondelli
 Mr. Robert Mooney
 Mr. Gerald Moore
 Ms. Kathleen Moore+
 Ms. Dee Moreno*
 Ms. Marlene MorrisΔ
 Ms. Frederica E. Muller+
 Ms. Diane Murphy
 Ms. Sandra Murphy
 Mr. Scott Murray
 Miss Kara Myatt
 Ms. Anne Naber
 Ms. Maryanne Naegele
 Ms. Laurie Nagy
 Mrs. Lisa Nash*
 Ms. Michelle Nassar
 Mr. Ulise Nedson+
 Ms. Carol F. Negendank
 Ms. Angie Nevarez
 Mrs. Shelby Newport
 Ms. Sandra Nicholas
 Mrs. Kimberly NoeΔ
 Ms. Patsy Noffsinger+
 Mr. Gregory Nolan
 Mrs. Betty Noonan
 Ms. Ruth A. O'Connell
 Miss Janet T. O'Keefe+Δ
 Ms. Patricia O'KeefeΔ
 Mr. Brian O'Leary
 Mrs. Marsha L. Ochodnicky+
 Ms. Nancy Olds
 Mr. Chad Osentoski
 Ms. Lorie Ouellette
 Ms. Carolyn Owen
 Dr. Shirley Owens
 Ms. Jolene Padgett
 Ms. Virginia Panek
 Ms. Jennifer Parker
 Mrs. Margaret Patterson
 Mrs. Kim Payne+Δ
 Mrs. Betty J. Pearson+

Mr. James Peltier
 Ms. Orlene Peresta
 Miss Natalie Perkins
 Mr. Will Petteys
 Ms. Ashley Phifer
 Mr. Michael Phillips
 Ms. Marissa Pierce
 Ms. Sally Pierson+
 Ms. Erin Mohrman
 Mrs. Karan A. Pinkston
 Mrs. Jan Plymale
 Mr. Michael Post+
 Mr. Cory Potter
 Ms. Elesia Powell
 Mr. Karvel Powell
 Ms. Leanne Pratt
 Mr. Harry S. Preston
 Ms. Brenda J. Price
 Mrs. Maria Antonietta Proffer*
 Mrs. Judy Puidokas
 Ms. Anne Naber
 Ms. Maryanne Naegele
 Ms. Laurie Nagy
 Mrs. Lisa Nash*
 Ms. Michelle Nassar
 Mr. Ulise Nedson+
 Ms. Carol F. Negendank
 Ms. Angie Nevarez
 Mrs. Shelby Newport
 Ms. Sandra Nicholas
 Mrs. Kimberly NoeΔ
 Ms. Patsy Noffsinger+
 Mr. Gregory Nolan
 Mrs. Betty Noonan
 Ms. Ruth A. O'Connell
 Miss Janet T. O'Keefe+Δ
 Ms. Patricia O'KeefeΔ
 Mr. Brian O'Leary
 Mrs. Marsha L. Ochodnicky+
 Ms. Nancy Olds
 Mr. Chad Osentoski
 Ms. Lorie Ouellette
 Ms. Carolyn Owen
 Dr. Shirley Owens
 Ms. Jolene Padgett
 Ms. Virginia Panek
 Ms. Jennifer Parker
 Mrs. Margaret Patterson
 Mrs. Kim Payne+Δ
 Mrs. Betty J. Pearson+

Ms. Tamara Sanders
 Mrs. Doreen Schafer
 Miss Jenette Schanick+Δ
 Mrs. Linda Scharrer
 Mr. Lawrence J. SchubaΔ
 Mrs. Jane Schepler
 Mrs. Mary Schiros+Δ
 Mrs. Margrit Schlatter
 Mrs. Maureen E. Schlott
 Mr. Ronald J. SchmitzΔ
 Ms. Marsha V. Schwarz+
 Mrs. Sheila A. Schweinsberg+
 Ms. Bernice Scott
 Ms. Jacqueline Scott+Δ
 Ms. Cecilia Scow
 Ms. Marian D. Seguin
 Mrs. Nancy Shannon
 Mrs. Ruth O. Sharpe+
 Mrs. Hannelore Shattuck
 Ms. Pam Shaw
 Mr. Phillip W. Purdy
 Ms. Patricia Shepard
 Ms. Valerie Shepard
 Dr. Janice Shimoda+
 Ms. Aurora Raineses
 Mr. Mark Rairick
 Mrs. Lieselotte Ratza
 Ms. Heidi Ray
 Ms. Mary K. Rayner
 Ms. Barbara Reehl
 Ms. Rose Mary Reiz
 Ms. Beverly Reynolds
 Ms. Connie Reynolds
 Mrs. Sharon Rickard
 Ms. Brandy Rickens
 Mrs. Kathy A. Ridley
 Ms. Cynthia Robson+
 Ms. Violet K. Rodgerson
 Mrs. Janet Roelle
 Ms. Kathleen RollinsΔ
 Mrs. Deborah K. Rowe
 Mrs. Patti L. Rowe
 Ms. Margaret J. Royce+Δ
 Ms. Nancy Rozier*
 Ms. Debra Rubey+Δ
 Mr. Philip Ruehle
 Mrs. Barbara Rumbel
 Ms. Carol F. Rush
 Mrs. Julia Rust
 Mrs. Kathryn Sanders
 Mrs. Marel L. Staisil

Ms. Zoe Starkweather+Δ
 Ms. Suzanne Stasiak
 Mr. Donald Steibel
 Ms. Patrice Stiehl+
 Mrs. Patricia Stepanick
 Ms. Audrey E. Stephens+
 Mrs. Betsy Yarrow Stevens+
 Ms. Sally Strand
 Mrs. Norma Struck
 Ms. Suzanne Sugden+
 Mr. Richard Suhr+
 Susan Sullivan+
 Ms. Virginia Sullivan+
 Mrs. Sarah Swartz
 Mr. Clifford Sykes
 Rev. Frederick H. Taggart+Δ
 Mr. David Tait
 Ms. Patricia Tasich
 Ms. Dorothy S. Taylor+
 Ms. Ivy Taylor
 Mr. Thomas A. Taylor
 Ms. Nancy Teel
 Ms. Jessica Teeples
 Mrs. Susan Terbrueggen
 Mrs. Sally Thielen+
 Ms. Christine Thomas
 Mr. Mick Thompson
 Miss Susan M. Thompson
 Mr. Mark Q. Thornton+Δ
 Ms. Jannell Tillman
 Mrs. Lei Tobias+
 Mrs. Linda Todorow
 Mrs. Joan Topham
 Mrs. Susan L. Tower
 Mr. John Tracy
 Ms. Jane B. Trotter
 Mrs. Elaine Tucker
 Mr. Daniel Turner
 Ms. Donna L. Ullrich+Δ
 Mrs. Jean Valley
 Ms. Rita Valley+
 Ms. Lynn Vanamburg
 Mrs. Theresa A. Vann
 Mr. David VanWinkle
 Ms. Jeanette VeenhuisΔ
 Mrs. Mary Ann Vergith
 Ms. Jolyn Vita+
 Ms. Dorothy Wagner
 Mr. Mark Wagner
 Mrs. Renee Wagner

Ms. Joy Walker
 Ms. Theresa Wall
 Ms. Jane Walworth+Δ
 Rev. Al Wamsley
 Ms. Wanda R. Warby+
 Ms. Gloria F. Watson
 Ms. Jean Warner
 Mr. Gary D. Weichner+Δ
 Mrs. Joyce Wheat+Δ
 Mr. Wilbert E. Williamson
 Ms. Elaine Wischmeyer+
 Mr. Conor Wolfgram*
 Mrs. Fran Wolok
 Ms. Dora M. Wright
 Ms. Katharine Wright
 Mrs. Margie Murray Wright
 Mr. Sean Wszelaki
 Ms. Darla S. Wynn+Δ
 Mrs. Mary Yauch
 Ms. Victoria Ybarra
 Mrs. Michelle Tock York
 Mrs. Barbara A. Young
 Mrs. Helen Zimmerman
 Mr. Paul Zingert

Student

(\$20 annually)

Mr. Joel Arnold
 Ms. Anna Bakhador
 Camryn Blair
 Mr. Tim Brandt
 Miss Morgan Brezzil
 Olivia Carnes
 Miss Lia Clark
 Miss Aliah Davis
 Miss Paige Dombrowski
 Taylor Drury
 Ms. Violet Freeland
 Mr. William Rabiah Harmon*
 Mr. Michael Hatten
 Miss Kaitlynne Heyworth
 Ms. Erin Hunt
 Mr. Elijah Jackson*
 Miss Kaylee Jaksa
 Wesley Ann P. Johnson
 Mr. Brad J. Keen
 Miss Georgia Kovalick
 Miss Grace Kunz
 Miss Alexia Kwiatkowski
 Gabrielle Landsgaard
 Mr. Evan Latture

McKenna Marsh
 Mr. Joseph B. Meleca
 Miss Ellary Morris*
 Thomas L. Myers
 Miss Harper Neil*
 Miss Alexandria Nylander
 Emily Paul
 Miss Rebekah Perkins
 Mrs. Heidi Phaneuf
 Ms. Aria Pierson*
 Ms. Arinn Pray
 Miss Monica Redmond
 Blaise Rhein
 Miss Jenna Roush
 Mr. Brandon Scalf
 LaSasha Sharp
 Miss Lindsey Smith
 Miss Haley Solo
 Sheyenne Stowe
 Olivia Thomas-David
 Miss Journey Timmermas
 Miss Mizahnyi Tipton-Thomas
 James Varney*
 Mr. Sushant Wagley
 Mr. Alex Weidenhammer
 Benjamin West*
 Damian White
 Mr. Nataevion Williams
 Ashley Wirsing
 Miss Arlie Wisenbaugh

Youth

(\$20 annually)

Jackson Adams
 Lydia Adams
 Blake Banninger
 Brooklyn Brewer
 Erin Broecker
 Alex Bryngelson
 Charles Buffington
 Masai Clayborne
 Audrey Cmejrek
 Lily Cody
 Kennedy Dean
 Sohun Devisetty
 Braeden Dixner
 Corbin Dixner
 Ryland Dixner
 Avelin Fournier
 Sarah Fox
 Hope Garner

Alyssa Geda
 Jillian Guise
 Carson Haffajee
 Kai Haffajee
 Hadley Hamann
 Avie Hancock
 Sarah Rabiah Harmon
 Bradley Hodgson
 James Jaquith
 Ariel Y. Jenkins
 Madison Jones
 Grace Keech
 Emily Madill
 Samantha Middleton
 Sophia Middleton
 Melody Miles
 Lukas Neff
 Katie O'Connor
 Jacob Orzol
 Rohan Patel
 Adeline Perrault
 Sydney Place
 Emily Revord
 Madison Robertson
 Parker Roeser
 Karsten Sabo
 Elliot Sanford
 Michael Savarino
 Sophia Savarino
 Aceil Shamieh
 Eve Sheldon
 Alivia Swank
 Anshu Talati
 Charli Thomas
 Nora Tiennan
 Addisen Timpf
 Ella Timpf
 Olivia Timpf
 Lucas Tower
 Annika Warby
 Riker Warby
 Abigayle Weder
 Gus Wickerman
 Madeline Williams
 Addison Wilson

Financial Statement

Board of Directors
Flint Institute of Arts
Flint, Michigan

Independent Auditor's Report

We have audited the accompanying financial statements of Flint Institute of Arts which comprise the statement of financial position as of June 30, 2015, and the related statements of activities, functional expenses, and cash flows for the year then ended, and the related notes to the financial statements.

Management is responsible for the preparation and fair presentation of these financial statements in accordance with accounting principles generally accepted in the United States of America; this includes the design, implementation, and maintenance of internal control relevant to the preparation and fair presentation of financial statements that are free from material misstatement, whether due to fraud or error.

Our responsibility is to express an opinion on these financial statements based on our audit. We conducted our audit in accordance with auditing standards generally accepted in the United States of America. Those standards require that we plan and perform the audit to obtain reasonable assurance about whether the financial statements are free of material misstatement.

An audit involves performing procedures to obtain audit evidence about the amounts and disclosures in the financial statements. The procedures selected depend on the auditors' judgment, including the assessment of the risks of material misstatement of the financial statements, whether due to fraud or error. In making those risk assessments, the auditor considers internal control relevant to the entity's preparation and fair presentation of the financial statements in order to design audit procedures that are appropriate in the circumstances, but not for the purpose of expressing an opinion on the effectiveness of the entity's internal control. Accordingly, we express no such opinion. An audit also includes evaluating the appropriateness of accounting policies used and the reasonableness of significant accounting estimates made by management, as well as evaluating the overall presentation of the financial statements.

We believe that the audit evidence we have obtained is sufficient and appropriate to provide a basis for our audit opinion.

In our opinion, the financial statements referred to above present fairly, in all material respects, the financial position of Flint Institute of Arts as of June 30, 2015, and the changes in its net assets and its cash flows for the year then ended in accordance with accounting principles generally accepted in the United States of America.

We have previously audited Flint Institute of Arts' June 30, 2014, financial statements, and we expressed an unmodified audit opinion on those audited financial statements in our report dated January 8, 2015. In our opinion, the summarized comparative information presented herein as of and for the year ended June 30, 2014 is consistent, in all material respects, with the audited financial statements from which it has been derived.

Our audit was conducted for the purpose of forming an opinion on the financial statements as a whole. The Schedule of Investments is presented for purposes of additional analysis and is not a required part of the financial statements. Such information is the responsibility of management and was derived from and relates directly to the underlying accounting and other records used to prepare the financial statements. The information has been subjected to the auditing procedures applied in the audit of the financial statements and certain additional procedures, including comparing and reconciling such information directly to the underlying accounting and other records used to prepare the financial statements or to the financial statements themselves, and other additional procedures in accordance with auditing standards generally accepted in the United States of America. In our opinion, the information is fairly stated in all material respects in relation to the financial statements as a whole.

Yeo & Yeo, P.C.

Flint, Michigan
December 10, 2015

Statement of Financial Position

June 30, 2015 with comparative totals for 2014

	Unrestricted		Temporarily Restricted		Permanently Restricted	Total All Funds	
	Operating Fund	Plant Fund	Restricted Fund	Permanent Collection Fund	Endowment Fund	2015	2014
Assets							
Cash and cash equivalents	\$ 860,628	\$ -	\$ -	\$ -	\$ -	\$ 860,628	\$ 28,646
Accounts receivable	82,318	-	-	-	-	82,318	88,759
Contributions receivable	-	-	33,334	-	752,881	786,015	135,671
Inventory	125,974	-	-	-	-	125,974	132,193
Prepaid expenses	80,624	-	-	-	-	80,624	55,847
Due from other funds	-	-	39,423	611,200	431,174	1,081,797	619,889
Fixed assets	-	15,868,586	-	-	-	15,868,586	16,182,150
Intangible asset	-	25,000	-	-	-	25,000	25,000
Permanent collection	-	-	-	1	-	1	1
Interest in income trusts	-	-	-	-	1	1	1
Trusts held by third party	-	-	-	-	2,009,945	2,009,945	2,016,734
Investments	492,587	-	-	-	20,576,862	21,069,449	16,874,431
Total Assets	\$ 1,642,131	\$ 15,893,586	\$ 72,757	\$ 611,201	\$ 23,770,663	\$ 41,990,338	\$ 36,159,322
Liabilities and Net Assets							
Liabilities							
Accounts payable	\$ 42,513	\$ -	\$ -	\$ -	\$ -	\$ 42,513	\$ 73,124
Accrued expenses and withheld taxes	57,588	-	-	-	-	57,588	67,746
Due to other funds	1,081,797	-	-	-	-	1,081,797	619,889
Capital lease payable	-	-	-	-	-	-	7,101
Deferred revenue	23,889	-	10,000	-	-	33,889	22,333
Total Liabilities	1,205,787	-	10,000	-	-	1,215,787	790,193
Net Assets							
Unrestricted - operations	436,344	25,000	-	-	-	461,344	92,644
Unrestricted - net investment in fixed assets	-	15,868,586	-	-	-	15,868,586	16,182,150
Temporarily restricted	-	-	62,757	611,201	-	673,958	143,123
Permanently restricted	-	-	-	-	23,770,663	23,770,663	18,951,212
Total Net Assets	436,344	15,893,586	62,757	611,201	23,770,663	40,774,551	35,369,129
Total Liabilities and Net Assets	\$ 1,642,131	\$ 15,893,586	\$ 72,757	\$ 611,201	\$ 23,770,663	\$ 41,990,338	\$ 36,159,322

Statement of Activities

Year ended June 30, 2015 with comparative totals for 2014

	Unrestricted		Temporarily Restricted		Permanently Restricted	Total All Funds	
	Operating Fund	Plant Fund	Restricted Fund	Permanent Collection Fund	Endowment Fund	2015	2014
Revenues, Gains, and Other Support							
Public support							
Contributions/Bequests	\$ 660,335	\$ 68,342	\$ -	\$ 3,081	\$ 5,077,063	\$ 5,808,821	\$ 1,512,743
Grants	2,263,315	34,277	-	-	-	2,297,592	1,638,799
Bray and Pierson trust distributions	21,369	-	-	-	-	21,369	84,830
Community Foundation trust distributions	360,965	-	-	19,019	-	379,984	453,884
Total public support	3,305,984	102,619	-	22,100	5,077,063	8,507,766	3,690,256
Revenue							
Museum shop and cafe sales - less direct costs of \$ 175,418 and \$ 143,766	57,700	-	-	-	-	57,700	85,354
Memberships	211,915	-	-	-	-	211,915	234,484
Tuition	257,386	-	-	-	-	257,386	216,222
Exhibitions and programs	-	-	-	-	-	-	4,733
Ticket sales	49,324	-	-	-	-	49,324	32,904
Investment income	4,694	-	-	-	440,248	444,942	317,021
Net realized gain on investments	1,882	-	-	-	321,195	322,877	723,067
Miscellaneous income	65,852	-	-	-	-	65,852	78,212
Total revenue	648,553	-	-	-	761,443	1,409,996	1,691,997
Total public support and revenue	3,954,537	102,619	-	22,100	5,838,506	9,917,762	5,382,253
Expenses and losses							
Program services							
Classes	414,464	120,882	-	-	-	535,346	529,806
Public information	448,904	20,882	-	-	-	469,786	381,070
Permanent collections	647,867	98,529	-	-	-	746,396	721,892
Exhibitions	630,269	204,411	-	-	-	834,680	822,817
Museum shop	267,959	41,765	-	-	-	309,724	305,022
Programs	630,230	80,882	-	-	-	711,112	672,342
Total program services	3,037,693	567,351	-	-	-	3,605,044	3,432,949

Statement of Activities

Year ended June 30, 2015 with comparative totals for 2014

	Unrestricted Funds		Temporarily Restricted		Permanently Restricted	Total All Funds	
	Operating Fund	Plant Fund	Restricted Fund	Permanent Collection Fund	Endowment Fund	2015	2014
Supporting services							
Management and general	1,018,144	20,880	-	-	-	1,039,024	978,587
Fundraising	236,958	-	-	-	-	236,958	208,148
Total supporting services	1,255,102	20,880	-	-	-	1,275,982	1,186,735
Total expenses	4,292,795	588,231	-	-	-	4,881,026	4,619,684
Excess (deficiency) of public support and revenue over expenses before other changes in net assets	(338,258)	(485,612)	-	22,100	5,838,506	5,036,736	762,569
Other changes in net assets							
Loss on disposal of fixed assets	-	(71,668)	-	-	-	(71,668)	(48,109)
Proceeds from sales of collection items not capitalized	-	-	-	611,200	-	611,200	13,083
Purchases of collection items not capitalized	-	-	-	(6,005)	-	(6,005)	(257,335)
Trust transfers	738,985	-	18,532	-	(757,497)	-	-
Interfund transfers	19,571	193,494	(98,897)	(16,095)	(98,073)	-	-
Transfer to Community Foundation	-	-	-	-	-	-	(500,672)
Change in value of trusts held by third party	-	-	-	-	(6,789)	(6,789)	155,752
Net unrealized gain (loss) on investments	(1,356)	-	-	-	(156,696)	(158,052)	1,554,690
Total other changes in net assets	757,180	121,826	(80,365)	589,100	(1,019,055)	368,686	919,409
Total change in net assets	418,922	(363,786)	(80,365)	611,200	4,819,451	5,405,422	1,681,978
Net assets - beginning of year	17,422	16,257,372	143,122	1	18,951,212	35,369,129	33,687,151
Net assets - end of year	\$ 436,344	\$ 15,893,586	\$ 62,757	\$ 611,201	\$ 23,770,663	\$ 40,774,551	\$ 35,369,129

Board, Staff & Faculty

Board of Trustees

Lynne Hurand, *President*
 Dean Yeotis, *First Vice-President*
 Louis A. Hawkins, *Second Vice-President*
 Marilyn Kopp, *Secretary*
 Diane Lindholm, *Treasurer*
 Michael J. Behm
 Kathryn C. Boles
 Susan Steiner Bolhouse
 Eleanor E. Brownell
 F. James Cummins
 James D. Draper
 Shannon Easter White
 Katharine W. Eiferle
 Chris Flores
 Mona Hardas
 Janice T. Harden
 Armando Hernandez
 Jimmy King
 Thomas B. Lillie
 Thomas J. Mitchell
 Elizabeth Murphy
 Robert S. Piper
 Ira Rutherford
 Elisabeth Saab
 Grayce Scholt
 David T. Taylor
 D.J. Trela
 Michael Wright

Honorary Trustee

Elizabeth Neithercut

Staff & Art School Faculty

John Henry, *Executive Director*
 Guy Adamec, *Art School Faculty*
 Zack Akers, *Security*
 Valerie Allen, *Membership Coordinator*
 James Ames, *Art School Faculty*
 Rebecca Andrus, *Art School Faculty*
 Ed Bradley, *Associate Curator of Film*
 Jacob Brasseur, *Café Assistant*
 Julie Carr, *Café Assistant*
 Tom Cheek, *Photographer*
 Bryan Chirstie, *Facilities Manager*
 Sarah Christensen, *Curatorial Assistant*
 Justin Clanton, *Facilities Assistant*
 Shelby Coleman, *Café Assistant*
 Gail Curry, *Receptionist*
 Michael Davis, *Café Assistant*
 Monique Desormeau, *Curator of Education*
 Alla Dubrovich, *Art School Faculty*
 Michelle Dummer, *Assistant Curator of Education*
 Sarah Dunne, *Executive Assistant*
 Kimmerley Emmert, *Art School Faculty*
 William Farmer, *Security*
 Craig Fenner, *A/V Technician*
 Frank James Fisher, *Art School Faculty*
 Alice Foster-Stocum, *Art School Faculty*
 Lynne Friesen-Davis, *Art Educator*
 Jeff Garrett, *Director of the Art School*
 Kimberly Giacchina, *Visitor Services*
 Anthony Gittens, *Security*
 Tracee Glab, *Curator of Collections & Exhibitions*
 Michele Gunn, *Art School Faculty*
 Jeff Hageman, *Art School Faculty*
 Nick Hale, *Security*
 Jaclyn Hatcher, *Retail Clerk*
 Michelle Hathaway, *Café Assistant*
 Paul Hauth, *Art School Faculty*
 Craig Hinshaw, *Art School Faculty*
 Barbara Holmer, *Art School Faculty*
 Valorie Horton, *Visitor Services Manager*
 Donald Howell, *Facilities Assistant*

Greg Irwin, *Art School Faculty*
 Robert Irwin, *Security*
 Heather Jackson, *Curatorial Assistant*
 Judy Johnson, *Librarian*
 Meghan Kelly, *Education Assistant*
 Ryan Kelsey, *Art School Faculty*
 Donielle Keyes, *Visitor Services*
 Karyn Konkel, *Art School Faculty*
 Sergio Korth, *Art Educator*
 Natalia Lafuente, *Assistant Events Coordinator*
 Miles Lam, *Graphic Designer*
 Kayla Latham, *Visitor Services*
 Sarah Lathangue, *Art School Faculty*
 Michelene LaTurneau, *Security*
 Igor Macherkevich, *Art School Faculty*
 Alexis Massimino, *Art School Assistant*
 Katherine McAuliffe, *Event/Rental Assistant*
 Donald McCombs, *Security*
 Jeffrey McLaurin, *Facilities Assistant*
 Michael Melenbrink, *Director of Finance & Administration*
 Erin Mohrman, *Art School Faculty*
 Bryan Nichols, *Facilities Assistant*
 Okola Nicholson, *Event/Rental Assistant*
 Chad Osentoski, *Membership/Administration Assistant*
 Matthew Osmon, *Art School Faculty*
 Peter Ott, *Registrar*
 Ashley Phiffer, *Curatorial Assistant*
 Brandy Pickens, *Visitor Services*
 Cory Potter, *Retail Manager*
 Karvel Powell, *Security*
 Bobbi Proffer, *Café Assistant*
 Laura Quasarano, *Education Assistant*
 Beverly Reynolds, *Café Assistant*
 Rachel Reynolds, *Art School Faculty*
 Mark Robichaud, *Facilities Assistant*
 Scott Romanowski, *Security*
 Season Roy, *Membership/Administration Assistant*
 Philip Ruehle, *Art School Faculty*

Sherren Sandy, *Assistant Director of Members & Guest Relations*
 Kathryn Sharbaugh, *Director of Development*
 Kimberly Sharp, *Retail Clerk*
 Lois Sharp-Schneider, *Art School Faculty*
 Valerie Shepard, *Education Assistant*
 Yvette Shufford, *Visitor Services*
 Courtney Simpson, *Art School Faculty*
 Aria Slogor, *Art School Instructor*
 Nick Smith, *FIA Café Manager*
 Martin Stefan, *Security Supervisor*
 Tracey Stewart, *Grants Specialist*
 Bill Stolpin, *Art School Faculty*
 Karen Sutherland, *Art School Faculty*
 Amy Sutkowi, *Assistant to Art School Director*
 Billy Traylor, *Security*
 Joy Walker, *Art Educator*
 Kathleen Weiss, *Security*
 Timothy H. Widener, *Art School Faculty*
 Hannah Wikaryskz, *Café Assistant*
 Michael Wilson, *Security*
 Heather Wright, *Web Manager*

