

FLINT INSTITUTE OF ARTS

ANNUAL REPORT 2018-2019



Contents

president's & executive director's report	4
exhibitions	5-6
films	7-8
videos	9
acquisitions	10-17
loans	18-21
publications	22
development	23-24
art school	25-26
education	27
special events & facility rentals	28-30
auxiliary groups	31-32
contributions	33-36
membership	37-45
financial statement	46-48
board, staff, & faculty	49



1120 E. Kearsley St.
Flint, MI 48503
810.234.1695 phone
810.234.1692 fax
www.flintarts.org

cover image

Joan Bankemper
American, born 1959
Pimlico, 2018
Manufactured and cast porcelain
41½ x 37 x 10 inches
Museum purchase with funds from
the Collection Endowment, 2018.56

About the Flint Institute of Arts

Incorporated in 1928, the FIA is a privately supported, non-profit organization. It is one of Michigan's most significant cultural and educational resources, serving people of all ages and interests.

The Institute is supported entirely through memberships, sales, rentals, admissions, tuitions, contributions from individuals and businesses, earned income from endowments, county millage funds, and grants from trusts, government, and foundations.

The Institute's collections and temporary exhibitions are open daily (except national holidays). Art classes for adults and children, lectures, films, tours, and other special events are also offered as an integral part of the Institute's educational mission.

The Flint Institute of Arts is tax-exempt under Section 501 (c) (3).

Mission

To advance the understanding and appreciation of art for all through collections, exhibitions, and educational programs.

The FIA is a non-profit, equal opportunity employer, and provides programs and services without regard to race, color, religion, national origin, age, gender identity, or disability.



FIA operations are funded in part by the Genesee County Arts Education and Cultural Enrichment Millage funds. Your tax dollars at work.



Operating support for the Flint Institute of Arts is provided in part by the Charles Stewart Mott Foundation.



FIA exhibitions and programs are made possible in part with the support of the Michigan Council for Arts and Cultural Affairs, a partner agency of the National Endowment for the Arts.



President's & Executive Director's Report

With expansions, renovations, and construction in our rearview mirror, we began fiscal year 2018-19 with every segment of the FIA fully operational.

After rebounding from the second half of 2018, and ending the year in the black, we are extremely grateful to our many donors for their financial support. We would also like to thank our dedicated volunteer groups including the FIA Board of Trustees and at-large committee members for their collective judgment and commitment, which are so essential in connecting the Institute with the community they represent.

During the fiscal year 2018-19 beginning July 1, the FIA raised a \$6M budget, encountered 146,974 visitors and registered 3,494 members. The Art School enrolled a total of 2,024 students, up from 1,857, resulting in 14,763 encounters; and through the Education Department's adult programs, college programs, family programs, and the K-12, homeschool, and early childhood programs, we reached 54,000 children and adults. A noteworthy part of our success in reaching our audiences can be attributed to our digital media efforts resulting in 86,149 users on our website; 352,140 page views; and over 1.3M views on Facebook.

With the objective of providing even greater attention to our visitors, our Visitor Services Department was restructured. Expanded and retrained, they work closely with the Security Department to guarantee safe, comfortable, and enjoyable experiences for our nearly 150,000 visitors. In addition, they managed facility rentals, which, coupled with our own events, engaged 15,000 visitors. The Gala, Wine Tasting, and Art on Tap fundraisers were all great successes, and The Party, once again, astonished everyone with its energy and creativity reaching its highest financial success ever.

The Curatorial Department stayed busy, processing 158 new gifts and 28 purchases to add to the collection. The staff researched and wrote hundreds of labels, completed two new exhibition catalogues, and designed and installed 15

gallery exhibitions, all together drawing 50,900 visitors to the galleries.

This year, the Friends of Modern Art volunteers, by all accounts, presented one of the best Flint Art Fairs in years. They continued to sponsor the ever-popular film series; and in memory of beloved FOMA board member Dr. Sarah Lippert, they purchased new technology for recording lectures in the FIA Theater. FOMA also sponsored the very popular *Vanessa German: Miracles and Glory Abound* exhibition.



(left to right) President Thomas J. Mitchell and Executive Director John B. Henry

The Founders Society volunteers, once again, raised funds to support FIA programs through their annual First Frost event; then sponsored the Library, exhibitions in the Graphics Gallery, and *The Art of Collecting* exhibition.

Lastly, it is with pride and admiration that we express our deepest appreciation to our highly skilled and seemingly tireless staff. Their ability to turn their knowledge and creativity into all that's tangible at the FIA was, as always, second to none.

Thomas J. Mitchell
President

John B. Henry
Executive Director

Exhibitions

This fiscal year, the Flint Institute of Arts presented 15 unique exhibitions that allowed visitors the opportunity to experience 719 works of art by 426 different artists. The goal of exhibitions is to enhance our visitors' understanding of the various thematic, aesthetic, and historical elements of a work of art. From works in our permanent collection to international exhibitions, the FIA presented a broad range of exhibitions that explored a variety of artistic styles and themes.

The first exhibition of the year, *Surrealismo: Ojos de México (Surrealism: Eyes of Mexico)* opened in the Graphics gallery. It featured 34 photographs that demonstrated the enduring influence of Surrealism on photography in Mexico. In the Hodge and Henry galleries, we celebrated our 90th year with the *Collecting Stories* exhibition, which presented 261 works that illustrated the FIA's collecting over the last 90 years. *Impressionist Prints of Childe Hassam* opened in the Graphics gallery, demonstrating the artist's fascination with landscapes and portraits through 25 lithographs and etchings.

To foster the collecting spirit, *The Art of Collecting* opened in November and featured 131 paintings, prints, drawings, and sculptures on consignment from galleries in New York, Chicago, and Detroit. All of the works from different styles and time periods were available for sale. The purpose of this exhibition was three-fold: to introduce the visitor to the wide range of opportunities in the art market; to develop connoisseurship among visitors that may lead to greater participation in FIA events; and to add important works to local collections in the hope that one day some will be gifted to the museum. Executive Director John Henry and Curator of Collections and Exhibitions Tracee Glab conducted two exhibition preview tours prior to the Silent Auction to discuss trends in the art market and special characteristics of individual works.

In the new year, to accompany the 12th annual Community Gala, two exhibitions opened, *Engaging African Art: Highlights from the Horn Collection* and *Vanessa German: Miracles and Glory Abound*. *Engaging African Art* featured African artworks from the collection of Dr. Robert Horn, which demonstrated the rich diversity of African visual expressions and culture. Co-Chief Curator and Curator of African Art at the Detroit Institute of Arts Nii Quarcoopome gave a topical lecture in March. In the adjoining Henry gallery, contemporary artist Vanessa German spent a week at the FIA to install her *Miracles and Glory Abound* exhibition. The exhibition explored the power of stories and their ability to edit history. Vanessa

German performed at the Community Gala and the following Sunday visitors were invited into the exhibition to meet the artist.

In the Harris-Burger gallery *Hybrid: Glass + Metal* opened. The exhibition focused on a seemingly unexpected pair of materials, explored through works by artists who combined glass and metal creating a dynamic synergy unachievable if the materials were used independently. In April, *Still Modern* opened in the Graphics gallery and featured works on paper (prints and watercolors) from the 20th to 21st centuries that depict still lifes. In April, the FIA created a "mini exhibition" in the museum's Dow gallery to showcase Pablo Picasso's oil painting *Femme assise (Seated Woman)* (1926) on loan from the Art Gallery of Ontario, Toronto, Canada (AGO). The exhibition featured works by Picasso and Cubist works by other artists from the permanent collection, and three loans from private collectors. The Picasso loan was a part of a reciprocal agreement with the AGO who borrowed the FIA's *Angel* by Peter Paul Rubens for its exhibition *Early Rubens*. In June, *Isabelle de Borchgrave: Fashioning Art from Paper* opened in the Hodge and Henry galleries. The exhibition presented 95 life-sized trompe l'oeil paper costumes and accessories of Belgian artist Isabelle de Borchgrave. The exhibition provided a retrospective view of the artist's sculptures over nearly two decades. Dorrance Curator of Fashion Design at The Phoenix Art Museum, Dennita Sewell gave a topical lecture. The artist Isabelle de Borchgrave visited the FIA for the close of the exhibition and presented a lecture on her work.

As the fiscal year neared its close, the first juried exhibition of flameworked glass opened in the Harris-Burger gallery, *From the Flame: Juried Flamework*. Out of 69 submissions, the jury selected 32 objects to be included in the exhibition. Detroit-based glass artist and Crafts Program Manager at The Henry Ford Museum, Josh Wojick, acted as the judge—choosing first, second, and third place—all were awarded monetary prizes. In addition, visitors had the opportunity to cast their vote for a People's Choice Award. In total 2,012 visitors participated in the voting.

From the exhibition *Isabelle de Borchgrave: Fashioning Art from Paper*

Isabelle de Borchgrave
Belgian, born 1946
Mantua, 2011
Mixed media, acrylic,
ink, metallic powder and
adhesive on paper
59 x 94¹/₄ x 25 inches
Collection of the artist.



4.21.18 – 8.12.18

From Lens to Eye to Hand: Photorealism 1969 to Today

Sponsored by Friends of Modern Art

4.21.18 – 1.27.19

Breaking with Tradition: Contemporary Ceramics

4.21.18 – 7.15.18

In Search of Lost Time: Peter Milton Prints

Sponsored by Founders Society

4.7.18 – 10.27.19

Small Worlds

7.21.18 – 10.14.18

Surrealismo: Ojos de México

Sponsored by Founders Society

9.15.18 – 11.4.18

Collecting Stories

10.20.18 – 1.13.19

Impressionist Prints of Childe Hassam

Sponsored by Founders Society

11.24.18 – 1.6.19

The Art of Collecting

Sponsored by Founders Society

1.19.19 – 4.14.19

The Drama of Japanese Prints

Sponsored by Founders Society

1.27.19 – 5.26.19

Engaging African Art: Highlights from the Horn Collection

1.27.19 – 4.20.19

Vanessa German: Miracles and Glory Abound

Sponsored by Friends of Modern Art and Community Gala

2.16.19 – 6.16.19

Hybrid: Glass + Metal

4.6.19 – 1.6.20

Picasso & Cubism

Sponsored by Dort Federal Credit Union

4.20.19 – 7.14.19

Still Modern

Sponsored by the Founders Society

6.14.19 – 9.8.19

Isabelle de Borchgrave: Fashioning Art from Paper

Major funding provided by FedEx

6.29.19 – 10.6.19

From the Flame: Juried Flamework

Prizes courtesy of Security Credit Union

Films

The FIA Film Program is intended to offer motion pictures that appeal to a broad and diverse audience in the local community. The program is comprised primarily of a weekly schedule of film series and festivals in the FIA Theater. The main series, sponsored by the Friends of Modern Art and held on Fridays, Saturdays, and Sundays, accounted for 45 titles over 37 weeks from September 2018 until June 2019.

A total of 7,963 patrons over 41 weeks attended all film-related FIA events in 2018–19. The FIA Film Society continued for its 11th year to enable members to take a stronger interest in the program.

Among the movies shown at FIA in 2018–19 were *Capernaum* and *Shoplifters*, nominees for the Academy Award for best foreign language film; *RBG* and *Hale County: This Morning, This Evening*, nominees for the best documentary Oscar; *Amazing Grace*, the acclaimed concert documentary about Aretha Franklin; and the Oscar-nominated films *The Wife* and *Can You Ever Forgive Me?* Other popular titles were the Halloween-week horror comedy *Madame Hyde* and the Academy Award Nominated Shorts. Another particularly successful weekend brought the new scripted feature *Stan & Ollie* together with a program of 1930s Stan Laurel-Oliver Hardy short films.

In addition to the FOMA-funded titles, the FIA partnered with the Flint Jewish Federation for the 15th annual Karen Schneider Jewish Film Festival of Flint and with the local nonprofit Communities First for the fourth season of a four-title series of African American-themed films.

On June 29, in connection with the July 6th opening of the *Four Seasons* courtyard sculpture exhibition by Philip Haas, the FIA showed Haas' film *The Music of Chance*. The screening was followed by a Q&A with the director/artist and FIA Associate Curator of Film Ed Bradley.

Film Program

The FIA Theater screened these films in the main Friends of Modern Art series:

September

Boundaries
RBG
The Rider
First Reformed
Final Portrait

October

The Wife
Mary Shelley
The Guilty
Love, Gilda
Madame Hyde

November

Boom for Real
The Death of Stalin
Let the Sunshine In
The Catcher Was a Spy
Skate Kitchen
The Guardians

December

Hearts Beat Loud
Puzzle

January

Juliet, Naked
Museo
Tea With the Dames
Bathtubs Over Broadway
Shoplifters

February

Sorry to Bother You
Pick of the Litter
The Gospel According to Andre
Blaze
A Boy. A Girl. A Dream.

March

Colette
Becoming Astrid
Madeline's Madeline
Maria by Callas
Far From the Tree
The Wild Pear Tree

April

Back to Burgundy
Academy Award Nominated Shorts
Stan & Ollie
Vintage Laurel and Hardy short films

May

Can You Ever Forgive Me?
At Eternity's Gate
Hale County: This Morning, This Evening
Ruben Brandt, Collector
Capernaum
Never Look Back

June

Amazing Grace



FOMA Film series was sponsored by:

Friends of Modern Art
Guardian Alarm
Merrill Lynch
Michigan Public Radio

Special Events

July 26

Flint Youth Film Festival

Screening of films and awards ceremony. 112 people attended in all.

August 28

FIA Film Society Sneak Preview

Ed Bradley and Michael Rucks presented a preview of the Friends of Modern Art series, with film clips. 151 people attended.

November 15, December 13, January 10, February 14

Communities First African-American Film Series

Screened were *Brothers Hypnotic*, *Pacoima Stories: Land of Dreams*, *The Possibility of Her*, and *Love Jacked*. 584 people attended in all.

May 19–23

Karen Schneider Jewish Film Festival of Flint

In the 15th annual local event—a spinoff of the Detroit-based Lenore Marwil Jewish Film Festival—five feature-length films were shown in a co-sponsorship with the Flint Jewish Federation. Screened were *Shalom Bollywood: The Untold Story of Indian Cinema*; *Above the Drowning Sea*; *Budapest Noir*; *The Cousin*; and *The Last Suit*. An April 24 “teaser” preview also was part of the festival. 429 people attended in all.

Film Society

The 2018–19 season marked the 11th year of the FIA Film Society, a group formed to increase interest in, and funding for, the film program.

By season's end, the society included 89 members and sponsors—the second-highest total ever. Members received 36 tickets to FOMA films, listings in the FIA Magazine and Annual Report, and access to monthly e-mailed newsletters about upcoming movies.

Higher sponsorship levels were acknowledged on the screen before each film presentation on the FIA website.

Videos

Each year, the FIA features a number of contemporary video artworks in the Media Arts Gallery. This year, 12 videos touched on multiple themes, including colonialism, identity, and consumption. The gallery is ideally suited for single-channel videos, played on a continuous loop, and projected onto a 4x8 foot screen, as well as small video installations.

7.1.18 – 7.31.18
Flint Youth Film Festival
Flint Youth Media Project, 2018

8.1.18 – 8.31.18
Dr Jekyll & Mr Hyde
Paul Bush, 2001

9.1.18 – 9.30.18
The Dark, Krystle
Michael Robinson, 2013

10.1.18 – 10.31.18
Walt Disney's 'Taxi Driver'
Bryan Boyce, 2012

11.1.18 – 11.30.18
Around the Park
William Wegman, 2007

12.1.18 – 12.30.18
Brilliant Noise
Semiconductor, 2006

1.1.19 – 1.31.19
The Sea is History
Louis Henderson, 2016

2.1.19 – 2.28.19
Papillon d'amour
Nicolas Provost, 2003

3.1.19 – 3.31.19
The Way Things Go
Peter Fischli and David Weiss, 1987

4.1.19 – 4.30.19
Thinking Hurts Too Much
Cameron Gray, 2013

5.1.19 – 5.31.19
Snow White Clapping
Elliott Jamal Robbins, 2018

6.2.19 – 6.30.19
The Butcher's Shop
Philip Haas, 1987



Philip Haas
American, born 1954
The Butcher's Shop, 1987
7 minutes
Courtesy of the artist

Acquisitions

The Flint Institute of Arts' permanent collection is a resource for creating exhibitions and developing educational programs for a diverse public, including scholars and students.

The growth of the collection is supported by gifts from civic-minded individuals who donate funds or works of art to the permanent collection. In addition, the Curatorial Department and the Collections Committee work together to identify strategies and seek new funds for the acquisition of artworks that meet museum objectives and the expectations of an ever inquisitive and knowledgeable public. The staff conducts work essential to the care and management of the collection, including research, documentation, preservation, conservation, presentation, and interpretation.

Louis Marak
American, born 1942
Covered Table with Open Box, n.d.
Earthenware
25 × 19 × 5 inches
Museum purchase with funds from the Estate of Grayce M. Scholt, 2018.46



Erich Heckel
German, 1883–1970
Der Spaziergang, 1920
Woodcut on paper
18 × 12³/₄ inches
Museum purchase with funds from the Collection Endowment, 2018.47

Jack Levine
American, 1915–2010
Gangster's Funeral, 1965
Etching on paper
19 × 25 inches
Museum purchase with funds from the Collection Endowment, 2018.48

Lynne Avadenka
American
Plum Colored Lament, 2010
Color lithography, letterpress printing from photopolymer plates and wood type
12 × 6¹/₂ inches
Museum Purchase with funds donated by The Sheppy Dog Fund, Dr. Alan Klein, Advisor, 2018.49

Alacie Sakiagaq
Canadian, 1928–1990
Man and Seal, ca. 1970
Soapstone
6 × 9¹/₄ × 6¹/₄ inches
Gift of Samantha and Kerstin in memory of their beloved uncle, Thomas Calhoun, 2018.50

George Arluk
Canadian, born 1949
Mother and Child, ca. 1980
Soapstone
4³/₄ × 5 × 1³/₄ inches
Gift of Samantha and Kerstin in memory of their beloved uncle, Thomas Calhoun, 2018.51

George Arluk
Canadian, born 1949
Abstract Figure, ca. 1980
Soapstone
4³/₄ × 5 × 1³/₄ inches
Gift of Samantha and Kerstin in memory of their beloved uncle, Thomas Calhoun, 2018.52

Joanasie Pauloosie
Canadian, born 1962
Dancing Bear, ca. 1995
Serpentine
8 × 5 × 4 inches
Gift of Samantha and Kerstin in memory of their beloved uncle, Thomas Calhoun, 2018.53

Artist Unknown
Untitled (Abstract), n.d.
Soapstone
7¹/₂ × 7 × 3¹/₂ inches
Gift of Samantha and Kerstin in memory of their beloved uncle, Thomas Calhoun, 2018.54

Rudy Autio
American, 1926–2007
Stealing Horses, ca. 1987
Ceramic
38 × 22 × 21 inches
Museum purchase with funds from the Estate of Grayce M. Scholt and the Collection Endowment, 2018.55

Joan Bankemper
American, born 1959
Pimlico, 2018
Manufactured and cast porcelain
41¹/₂ × 37 × 10 inches
Museum purchase with funds from the Collection Endowment, 2018.56

Hans Sebald Beham
German, 1500–1550
The Peasants' Feast, ca. 1546
Engraving on paper
1⁷/₈ × 2⁷/₈ inches
Museum purchase with funds from the Jill Ford Murray Irrevocable Trust in memory of her parents, Carlotta Espy Ford and George Ross Ford, Jr., and her grandparents, Grace Miller Ford and George Ross Ford, 2018.57



Hendrik Goltzius
Dutch, 1558–1617
The Visitation, 1593
Engraving on paper
18⁵/₈ × 17³/₈ inches
Museum purchase with funds from the Jill Ford Murray Irrevocable Trust in memory of her parents, Carlotta Espy Ford and George Ross Ford, Jr., and her grandparents, Grace Miller Ford and George Ross Ford, 2018.58

Daniel Johnston
American, born 1961
Lidded Jar, n.d.
Stoneware
42 × 24 × 24 inches
Museum purchase with funds from the Collection Endowment, 2018.59

Clio Newton
American, born 1989
Alice, 2017
Charcoal on paper
93¹/₄ × 63¹/₈ inches
Museum purchase with funds donated by Friends of Modern Art, 2018.60

Ashanti
Ghana
Prestige Stool, n.d.
Wood
15³/₄ × 23¹/₂ × 13 inches
Museum purchase with funds from the Collection Endowment, 2018.61

Makonde
Tanzania
Nyangwa Pipe, early-mid 20th century
Wood, gourd, and ceramic
8 × 9 inches
Museum purchase with funds from the Collection Endowment, 2018.62

Pende
Kongo
Chief's Headdress, early-mid 20th century
Beads, natural fibers
12 inches diameter
Museum purchase with funds from Collection Endowment, 2018.63

Janis Miltenberger
American, born 1945
Dividing Line, 2017
Flame worked glass in metal frame
28 × 15 × 5 inches
Museum purchase with funds donated by Randolph Piper and his wife Susan Stuewer, in memory of Robert S. Piper, whose heart was always in art and the Flint Institute of Arts where he served as Board President and volunteer for many years, 2018.64

Wilfried Grootens
German, born 1954
Where the Shark Bubbles Blow. Rombus H21, 2014
Painted, laminated, polished glass
8⁵/₈ × 8⁵/₈ × 9³/₄ inches
Museum purchase with funds donated by the Kommareddi Family Fund of the Community Foundation of Greater Flint, 2018.65

Long-Bin Chen
Taiwanese, born 1964
Tibetan Buddha, 2017
Museum catalogues, mixed media
23 × 12¹/₂ × 8 inches
Museum purchase with funds from Collection Endowment, 2018.66

Sybil Andrews
English-Canadian, born England, 1898–1992
Day's End, 1961
Linocut on paper
10³/₄ × 10¹/₄ inches
Museum purchase with funds from Collection Endowment, 2018.67



William Harrison
American, born 1952
Trash, 2014
Graphite and charcoal on paper
30 × 22 inches
Museum purchase with funds from Collection Endowment, 2018.68

Simon Hennessey
English, born 1973
Down by the Sea, 2013
Acrylic on panel
26³/₄ × 32 inches
Museum purchase with funds from Collection Endowment, 2018.69

Avel de Knight
American, 1923–1995
Ancestor Tree II, 1973–77
Casein and gouache
12 × 12 inches
Museum purchase with funds from Collection Endowment, 2018.70

Yoruba
Federal Republic of Nigeria
Osanyin Staff, n.d.
Iron
25¹/₄ inches
Museum purchase with funds from Collection Endowment, 2018.71

Makonde
Tanzania
Ikomba Mask, early-mid -20th century
Wood, human hair, beeswax, natural pigments
9¹/₄ inches
Museum purchase with funds from Collection Endowment, 2018.72

Leemour Pelli
American, born 1964
Untitled (Couple III), 2012
Archival digital pigment print on paper
19 × 13 inches
Museum purchase with funds raised from the Flint Print Club, 2018.73

Roger Shimomura
American, born 1939
American Guardian, 2008
Lithograph on paper
27 × 39 inches
Museum purchase with funds raised from the Flint Print Club, 2018.74

Patti Warashina
American, born 1940
Between a Rock and a Hard Place, 2017
Lithograph on paper
17¹/₄ × 15 inches
Museum purchase with funds raised from the Flint Print Club, 2018.75

Darius Steward
American, born 1984
Stage 10 (Darius II Surprised), 2018
Watercolor on paper
15¹/₂ × 15¹/₂ inches
Museum purchase with funds raised from the Community Gala, 2018.76



J. T. Abernathy
American, born 1923
Orb Vessel, n.d.
Raku ceramic
6 × 7 inches
Gift from the Collection of Myron and Barbara Levine, 2018.77

Pierre Alechinsky
Belgian, born 1927
Ancestor, 1965
Lithograph on paper
25¹/₄ × 19¹/₄ inches
Gift from the Collection of Myron and Barbara Levine, 2018.78

Karel Appel
Dutch, 1921–2006
Floating Face, 1969
Lithograph on paper
21¹/₂ × 29¹/₂ inches
Gift from the Collection of Myron and Barbara Levine, 2018.79

Karel Appel
Dutch, 1921–2006
Paysage Humains, 1961
Lithograph on paper
22¹/₄ × 30 inches
Gift from the Collection of Myron and Barbara Levine, 2018.80



Evelyn Cheromiah
American, 1928–2013
Olla, n.d.
Terracotta
7¹/₂ inches diameter
The Collection of Myron and Barbara Levine, 2018.81

Harold L. Cohen
American, born 1925
A Family of Plants, 2003
Relief print on paper
22 × 14³/₄ inches
Gift from the Collection of Myron and Barbara Levine, 2018.82

Harold L. Cohen
American, born 1925
Cosmic Energy #5, 2005
Woodcut on paper
12⁵/₈ × 10⁵/₈ inches
Gift from the Collection of Myron and Barbara Levine, 2018.83

Harold L. Cohen
American, born 1925
Genocide Darfur #2, 2007
Aquatint on paper
7⁷/₈ × 9⁷/₈ inches
Gift from the Collection of Myron and Barbara Levine, 2018.84

Harold L. Cohen
American, born 1925
Paris - Spring 2010 #4, n.d.
Woodcut on paper
9¹/₄ × 11¹/₂ inches
Gift from the Collection of Myron and Barbara Levine, 2018.85

Harold L. Cohen
American, born 1925
Shadow Puppet Show, 2007
Woodblock on paper
10 × 18³/₄ inches
Gift from the Collection of Myron and Barbara Levine, 2018.86

Frances Concho
American, born 1947
Olla, n.d.
Earthenware
3 × 4 inches
Gift from the Collection of Myron and Barbara Levine, 2018.87

Corneille (Guillaume van Beverloo)
Dutch, 1922–2010
Un Été Ardent, 1968
Lithograph on paper
30 × 22¹/₄ inches
Gift from the Collection of Myron and Barbara Levine, 2018.88

Corneille (Guillaume van Beverloo)
Dutch, 1922–2010
Untitled, 1973
Lithograph on paper
25¹/₂ × 19¹/₂ inches
Gift from the Collection of Myron and Barbara Levine, 2018.89

Corneille (Guillaume van Beverloo)
Dutch, 1922–2010
Une Été Souverain, 1970
Lithograph on paper
25¹/₂ × 19 inches
Gift from the Collection of Myron and Barbara Levine, 2018.90

Corneille (Guillaume van Beverloo)
Dutch, 1922–2010
Untitled, 1973
Lithograph on paper
27¹/₂ × 39¹/₂ inches
Gift from the Collection Myron and Barbara Levine, 2018.91

Jim Dine
American, born 1935
Awl, 1973
Lithograph on paper
10¹/₄ × 8¹/₂ inches
Gift from the Collection of Myron and Barbara Levine, 2018.92

Stephen Edlich
American, 1942–1989
Untitled, 1990
Aquatint on paper
11¹/₄ × 6³/₄ inches
Gift from the Collection of Myron and Barbara Levine, 2018.93

Kei Fujiwara
American, born Japan, 1899–1983
Bizen Charger, n.d.
Stoneware
8 inches diameter
Gift from the Collection of Myron and Barbara Levine, 2018.94

Kei Fujiwara
American, born Japan, 1899–1983
Pot, n.d.
Terracotta
3¹/₄ × 4³/₄ inches
Gift from the Collection of Myron and Barbara Levine, 2018.95

William Gropper
American, 1897–1977
Duchess, 1945
Etching on paper
11⁵/₈ × 15¹/₂ inches
Gift from the Collection of Myron and Barbara Levine, 2018.96

William Gropper
American, 1897–1977
Tomorrow's Saint, 1945
Etching on paper
11⁵/₈ × 15¹/₂ inches
Gift from the Collection of Myron and Barbara Levine, 2018.97

William Gropper
American, 1897–1977
Chess Players, 1945
Etching on paper
11⁵/₈ × 15¹/₂ inches
Gift from the Collection of Myron and Barbara Levine, 2018.98

Josef Hampl
Czech, born 1932
Hand, 1990
Felted paper
25 × 19 inches
Gift from the Collection of Myron and Barbara Levine, 2018.99

Josef Hampl
Czech, born 1932
Prague Cemetery, 1966
Lithograph on paper
24³/₄ × 19 inches
Gift from the Collection of Myron and Barbara Levine, 2018.100

Jackie Histia-Shutiva
American, born 1961
Face Olla, n.d.
Ceramic
4¹/₂ × 7 inches
Gift from the Collection of Myron and Barbara Levine, 2018.101

Fred Horowitz
American, 1938–2013
Quiddity, 1976
Screenprint on paper
17 × 15 inches
Gift from the Collection of Myron and Barbara Levine, 2018.102

Henry Hunt
Canadian, 1923–1985
Four Part Mask, n.d.
Carved and painted red cedar
23 × 22 inches
Gift from the Collection of Myron and Barbara Levine, 2018.103

Stan Hunt
Canadian, born 1954
Small Beaver Mask, late 20th century
Carved red cedar, fiber
19 inches
Gift from the Collection of Myron and Barbara Levine, 2018.104



Asger Jorn
Danish, 1914–1973
Jubilation Larmoyennageuse, 1969
Lithograph on paper
25¹/₂ × 19 inches
Gift from the Collection of Myron and Barbara Levine, 2018.105



Asger Jorn
Danish, 1914–1973
L'Oiseau Rare, 1945
Etching on paper
4½ × 6 inches
Gift from the Collection of Myron and Barbara Levine, 2018.106

Asger Jorn
Danish, 1914–1973
Rencontre Inutile, 1945
Etching on paper
4¼ × 6 inches
Gift from the Collection of Myron and Barbara Levine, 2018.107

Asger Jorn
Danish, 1914–1973
Untitled, 1968
Lithograph on paper with hand additions
15 × 11¾ inches
Gift from the Collection of Myron and Barbara Levine, 2018.108

Kirili
American
Santa Clara Blackware Pot, n.d.
Ceramic
3½ × 4¾ inches
Gift from the Collection of Myron and Barbara Levine, 2018.109

Lydia Vicenti Lallo
American
Zuni Pot, n.d.
Painted terracotta
2½ × 3¼ inches
Gift from the Collection of Myron and Barbara Levine, 2018.110

Jim Lealock
American
Charger, n.d.
Ceramic
16 inches diameter
Gift from the Collection of Myron and Barbara Levine, 2018.111



Rico Le Brun
American, born Italy, 1900–1964
Villon's Death Ballad, 1945
Lithograph on paper
24¾ × 19 inches
Gift from the Collection of Myron and Barbara Levine, 2018.112

Majhongialc
American
Vessel, n.d.
Earthenware
5 × 4 inches
Gift from the Collection of Myron and Barbara Levine, 2018.113

Serefina Ortiz
American, 1931–2007
Storyteller Figure, n.d.
Terracotta
9 inches
Gift from the Collection of Myron and Barbara Levine, 2018.114

Tom Patterson
Canadian, born 1962
Small Bee Mask, late 20th century
Carved and painted red cedar, fiber
18 inches
Gift from the Collection of Myron and Barbara Levine, 2018.115

Irwin Poleahla
American
Wide-waisted Hopi Vessel, n.d.
Painted earthenware
3½ × 5½ inches
Gift from the Collection of Myron and Barbara Levine, 2018.116

Anton Rooskens
Dutch, 1906–1976
Untitled, n.d.
Lithograph on paper
21 × 30 inches
Gift from the Collection of Myron and Barbara Levine, 2018.117

Kathryn Kennedy Sharbaugh
American, born 1948
Bow (Study for floor design), 1987
Colored pencil on paper
36 × 28 inches
Gift from the Collection of Myron and Barbara Levine, 2018.118

Julian Stanczak
American, born Poland, 1928–2017
Nocturnal Hue (Purple), 1981
Serigraph on paper
30½ × 30½ inches
Gift from the Collection of Myron and Barbara Levine, 2018.119

Giuseppe Santomaso
Italian, 1907–1990
Seme nero..., 1976
Aquatint on paper
10½ × 6⅞ inches
Gift from the Collection of Myron and Barbara Levine, 2018.120

Ernst Vijlbrief
Dutch, 1934–2010
Halfway, 1969
Aquatint on paper
19¾ × 25½ inches
Gift from the Collection of Myron and Barbara Levine, 2018.121

Ernst Vijlbrief
Dutch, 1934–2010
Opyallend, 1964
Aquatint on paper
19¾ × 25½ inches
Gift from the Collection of Myron and Barbara Levine, 2018.122

Max Weber
Swiss, 1897–1982
Man Reclining on a Sofa, 1962
Aquatint and etching on paper
7 × 10½ inches
Gift from the Collection of Myron and Barbara Levine, 2018.123

Max Weber
Swiss, 1897–1982
Schreitende, 1910
Bronze
18½ inches
Gift from the Collection of Myron and Barbara Levine, 2018.124

Ruth Weisberg
American, born 1942
The Shtetl, A Journey and a Memorial Portfolio, 1971
Intaglio, intaglio and relief on paper
23 × 22 inches
Gift from the Collection of Myron and Barbara Levine, 2018.125.1–9

Adja Yunkers
American, born Latvia, 1900–1983
Curiosity, 1953
Lithograph on paper
19½ × 14 inches
Gift from the Collection of Myron and Barbara Levine, 2018.126

Adja Yunkers
American, born Latvia, 1900–1983
Echo II in Pink, 1977
Mixed media on paper
44 × 29¾ inches
Gift from the Collection of Myron and Barbara Levine, 2018.127

Adja Yunkers
American, born Latvia, 1900–1983
Icon, 1972
Lithograph and relief on paper
25 × 19 inches
Gift from the Collection of Myron and Barbara Levine, 2018.128



Adja Yunkers
American, born Latvia, 1900–1983
Dark Time, 1972
Lithograph on paper
28⅞ × 37¼ inches
Gift from the Collection of Myron and Barbara Levine, 2018.129

Adja Yunkers
American, born Latvia, 1900–1983
The Hamptons, 1977
Lithograph on paper
27 × 29½ inches
Gift from the Collection of Myron and Barbara Levine, 2018.130

American
Acoma Style Olla, n.d.
Painted earthenware
1¾ × 2¼ inches
Gift from the Collection of Myron and Barbara Levine, 2018.131

American
Black Footed Cup, n.d.
Ceramic
2¾ × 3¾ inches
Gift from the Collection of Myron and Barbara Levine, 2018.132

Mexican
Devil Mask, mid-20th century
Polychromed carved wood
13 × 13 inches
Gift from the Collection of Myron and Barbara Levine, 2018.133

Polynesian
Devil Mask with Skull Headdress, mid-20th century
Mixed media
11½ × 12½ inches
Gift from the Collection of Myron and Barbara Levine, 2018.134

Democratic Republic of Congo
Kuba Tukula Lidded Vessel, mid-20th century
Wood
7½ × 4 inches
Gift from the Collection of Myron and Barbara Levine, 2018.135

Papua New Guinea
Lime Holder for Betel Nut, n.d.
Painted wood, bamboo, fiber
24 inches
Gift from the Collection of Myron and Barbara Levine, 2018.136

American
Plate, n.d.
Painted terracotta
5½ inches diameter
Gift from the Collection of Myron and Barbara Levine, 2018.137

American
Tewa Pueblo Hopi Bowl, n.d.
Earthenware
6½ inches diameter
Gift from the Collection of Myron and Barbara Levine, 2018.138

>
Nayarit
Mexican
Tripod Man in Shackles, 150 BCE–220 CE
Painted earthenware
12 inches
Gift from the Collection of Myron and Barbara Levine, 2018.139

William Blake
English, 1757–1827
After **John Linnell**
English, 1792–1882
Wilson Lowry, 1824–1825 (4th state)
Engraving on paper
9¾ × 7¾ inches
Gift of Jane M. Bingham, 2018.140

Robert Brandard
English, 1805–1862
After **William Henry Bartlett**
British, 1809–1854
A Shanty on Lake Chaudière, 1840
Engraving on paper
4½ × 7 inches
Gift of Jane M. Bingham, 2018.141

Edward Paxman Brandard
English, 1819–1898
After **William Henry Bartlett**
British, 1809–1854
Raft on the St. Lawrence at Cape Santé, 1840
Engraving on paper
4½ × 7 inches
Gift of Jane M. Bingham, 2018.142

J. Carter
English, 1798–1855
After **William Henry Bartlett**
British, 1809–1854
St. John's - Richlieu River, 1840
Engraving on paper
4½ × 7 inches
Gift of Jane M. Bingham, 2018.143



Henry Griffiths
British, 1807–1849
After **William Henry Bartlett**
British, 1809–1854
St. Regis, Indian Village (St. Lawrence), 1840
Engraving on paper
4½ × 7 inches
Gift of Jane M. Bingham, 2018.144

George Cruikshank
English, 1792–1878
The Devil Came Fiddling Through Town, 1830
Intaglio on paper
6 × 4 inches
Gift of Jane M. Bingham, 2018.145

Käthe Kollwitz
German, 1867–1945
Hunger, 1924
Woodcut on paper
8¾ × 9 inches
Gift of Jane M. Bingham, 2018.146



>
Utagawa Kunisada
Japanese, 1786–1865
Bijinga-e (Beautiful women series), n.d.
Woodcut on paper
14 × 30 inches
Gift of Jane M. Bingham, 2018.147

Thom O'Connor
American, born 1937
The Mystic, n.d.
Intaglio on paper
5½ × 5½ inches
Gift of Jane M. Bingham, 2018.148

W. Pearson
Rocks and Weeds, 1968
Engraving on paper
5¾ × 5¾ inches
Gift of Jane M. Bingham, 2018.149

Sarah Pace Carothers
American, 1910–1999
Untitled, n.d.
Engraving on paper
7⅞ × 10¼ inches
Gift of Jane M. Bingham, 2018.150

Grayce Scholt
American, 1925–2018
Untitled, 1946
Ink drawing on paper
7 × 5 inches
Gift of Jane M. Bingham, 2018.151

Grayce Scholt
American, 1925–2018
Untitled (Crucifixion), n.d.
Etching on paper
5⅞ × 4¼ inches
Gift of Jane M. Bingham, 2018.152

Helen Siegl
American, born Austria, 1924–2009
Black Boy, n.d.
Woodcut on paper
20¾ × 7½ inches
Gift of Jane M. Bingham, 2018.153

Shirley Witebsky
American, 1925–1966
Sea Star, ca. 1950
Etching on paper
13¼ × 9 inches
Gift of Jane M. Bingham,
2018.154

Austrian
Maria Theresa in Josefstadt Theatre, 1813
Colored engraving on paper
7 × 9½ inches
Gift of Jane M. Bingham,
2018.155

Wesley Adderegg
American, born 1960
Way Back Cup and Saucer, n.d.
Painted earthenware
9 × 4½ × 4½ inches
Gift of Dr. Robert and Deanna
Harris Burger, 2018.156

Michael Blair
American
Ear of Corn Vessel, n.d.
Celadon ceramic
12½ × 7 inches
Gift of Dr. Robert and Deanna
Harris Burger, 2018.157

Robert Burger
American, born 1938
Honeycomb Sphere, n.d.
Porcelain
8 × 9 inches
Gift of Dr. Robert and Deanna
Harris Burger, 2018.158

Gary di Pasquale
American, born 1954
Shaped Vase, 2003
Ceramic
24 × 7 × 8 inches
Gift of Dr. Robert and Deanna
Harris Burger, 2018.159

Anne Hironelle
American, born 1944
Vessel, n.d.
Stoneware
8 × 11 inches
Gift of Dr. Robert and Deanna
Harris Burger, 2018.160

Lynn Kuhn
Swiss
Shell Bowl, n.d.
Faience
3 × 5½ inches
Gift of Dr. Robert and Deanna
Harris Burger, 2018.161

Anna Metcalfe
American, born 1979
A Living Topography: Stories from Lake Superior, n.d.
Porcelain, monofilament, steel frame
30 × 57 inches
Gift of Dr. Robert and Deanna
Harris Burger, 2018.162

Tom Otterness
American, born 1952
Standing Couple, 1982
Plaster
11½ × 7¼ × 5 inches
Gift of Dr. Robert and Deanna
Harris Burger, 2018.163

Gustavo Pérez
Mexican, born 1950
Vaso Cortado, 2000
Stoneware
7 × 6¼ inches
Gift of Dr. Robert and Deanna
Harris Burger, 2018.164

Rafa Pérez
Spanish, born 1957
Vessel, 2014
Ceramic
5 × 8 × 8 inches
Gift of Dr. Robert and Deanna
Harris Burger, 2018.165

Mary Scheier
American, 1910–2007
Edwin Scheier
American, 1910–2008
Vessel, 1984
Stoneware
13 × 12 inches
Gift of Dr. Robert and Deanna
Harris Burger, 2018.166



Bobby Silverman
American, born 1956
Stacked Bowls with Vase, 2001
Porcelain
8 × 20 inches
Gift of Dr. Robert and Deanna
Harris Burger, 2018.167

Toshiko Takaezu
American, born Japan, 1922–
2011
Vase, 2000
Stoneware
3 × 3 inches
Gift of Dr. Robert and Deanna
Harris Burger, 2018.168

Joan Takayma-Ogawa
American, born 1955
Made in Pasadena: Let Us Cultivate Our Decadence, 2007
Ceramic, metal, mixed media
5 × 8 × 8 inches
Gift of Dr. Robert and Deanna
Harris Burger, 2018.169



John Stuart Curry
American, 1897–1946
Missed Leap, 1934
Lithograph on paper
16¾ × 9¾ inches
Gift of Anne Lindell Hagiwara
in memory of her parents,
Alice Stemsrud and Herman
Shlionsky, 2018.170

John Stuart Curry
American, 1897–1946
Summer Afternoon, 1939
Lithograph on paper
10 × 14 inches
Gift of Anne Lindell Hagiwara
in memory of her parents,
Alice Stemsrud and Herman
Shlionsky, 2018.171

Churchill Ettinger
American, 1903–1984
A Corner of the Cove, 1938
Etching on paper
7¾ × 11¾ inches
Gift of Anne Lindell Hagiwara
in memory of her parents,
Alice Stemsrud and Herman
Shlionsky, 2018.172

Gordon Grant
American, 1875–1962
Hauling in the Nets, 1937
Lithograph on paper
9 × 11¾ inches
Gift of Anne Lindell Hagiwara
in memory of her parents,
Alice Stemsrud and Herman
Shlionsky, 2018.173

Irwin D. Hoffman
American, 1901–1989
Pastoral - Puerto Rico, 1938
Etching on paper
9 × 11 inches
Gift of Anne Lindell Hagiwara
in memory of her parents,
Alice Stemsrud and Herman
Shlionsky, 2018.174

Joseph Margulies
American, born Vienna, 1896–
1984
Light and Shadow, 1937
Etching on paper
10 × 7½ inches
Gift of Anne Lindell Hagiwara
in memory of her parents,
Alice Stemsrud and Herman
Shlionsky, 2018.175

Grant Wood
American, 1891–1942
Shrine Quartet, 1939
Lithograph on paper
7¼ × 12 inches
Gift of Anne Lindell Hagiwara
in memory of her parents,
Alice Stemsrud and Herman
Shlionsky, 2018.176

C. Jac Young
American, born Germany,
1880–1940
Singing Birches, 1938
Etching on paper
7¼ × 10 inches
Gift of Anne Lindell Hagiwara
in memory of her parents,
Alice Stemsrud and Herman
Shlionsky, 2018.177

Robert von Sternberg
American, born 1939
Best Western Chateau, Big Bear Lake, California, 2018
Archival inkjet print
12 × 16½ inches
Gift of the artist, 2018.178

Robert von Sternberg
American, born 1939
Car Wash, Tuscon 2013, 2018
Archival inkjet print
11 × 16½ inches
Gift of the artist, 2018.179

Robert von Sternberg
American, born 1939
Chesterton, Indiana 2015,
2018
Archival inkjet print
11 × 16½ inches
Gift of the artist, 2018.180

Robert von Sternberg
American, born 1939
Grand Canyon, Arizona 2005,
2017
Archival inkjet print
11 × 16½ inches
Gift of the artist, 2018.181

Robert von Sternberg
American, born 1939
Highway 1, Catayina, Mexico 1984, 2018
Archival inkjet print
8 × 12 inches
Gift of the artist, 2018.182

Robert von Sternberg
American, born 1939
Huntington Beach, California 1988, 2018
Archival inkjet print
8 × 12 inches
Gift of the artist, 2018.183

Robert von Sternberg
American, born 1939
Palisades Park, Santa Monica, California 1975, 2018
Archival inkjet print
9¾ × 12 inches
Gift of the artist, 2018.184

Robert von Sternberg
American, born 1939
Prague, Czechoslovakia 1967,
2018
Archival inkjet print
8 × 12 inches
Gift of the artist, 2018.185

Robert von Sternberg
American, born 1939
San Simeon, California 2017,
2018
Archival inkjet print
11 × 16½ inches
Gift of the artist, 2018.186

Robert von Sternberg
American, born 1939
Sunrise, Bastion Point, Mallacoota, Victoria, Australia 2010, 2018
Archival inkjet print
11 × 16½ inches
Gift of the artist, 2018.187

Barry Andersen
American, born 1945
Connemara Mountains, Peat and Sky, Ireland, 2004
Archival inkjet print
10 × 14 inches
Gift of the artist, 2018.188



Barry Andersen
American, born 1945
Grindavik 2, Iceland, 2016
Archival inkjet print
12 × 18 inches
Gift of the artist, 2018.189

Barry Andersen
American, born 1945
Salt Flat Pool, Carmargue, Arles, France, 2013
Archival inkjet print
12 × 18 inches
Gift of the artist, 2018.190

Kenda North
American, born 1951
Bliss, 2012–2018
Ultrachrome pigment print
17 × 22 inches
Gift of Kenda North, 2018.191

Kenda North
American, born 1951
Descent, 2012–2018
Ultrachrome pigment print
17 × 22 inches
Gift of Kenda North, 2018.192

Kenda North
American, born 1951
Red Shoes, 2012–2018
Ultrachrome pigment print
17 × 22 inches
Gift of Kenda North, 2018.193

Sheila Pinkel
American, born 1941
Bausch Lomb Protar, Zeiss Lens, 2012–2016
Archival inkjet print
20 × 20 inches
Gift of Sheila Pinkel, 2018.194

Sheila Pinkel
American, born 1941
Ilex Lens, 2012–2016
Archival inkjet print
20 × 20 inches
Gift of Sheila Pinkel, 2018.195

Sheila Pinkel
American, born 1941
Light Bulb, 2016
Xeroradiograph inkjet print
10 × 15 inches
Gift of Sheila Pinkel, 2018.196

Sheila Pinkel
American, born 1941
Palmos Stereo Camera,
2012–2016
Archival inkjet print
13¾ × 20 inches
Gift of Sheila Pinkel, 2018.197

Bonnie Schiffman
American, born 1950
Andy Warhol 1976, 2018
Inkjet print
19½ × 13 inches
Gift of the artist, 2018.198

Bonnie Schiffman
American, born 1950
Ed Ruscha 1985, 2018
Inkjet print
15¾ × 15¾ inches
Gift of the artist, 2018.199

Bonnie Schiffman
American, born 1950
Frank Gehry 1985, 2018
Inkjet print
15 × 20 inches
Gift of the artist, 2018.200

Melanie Walker
American, born 1949
Tobacco Field (Self-Portrait)
1972, 2018
Inkjet print
12 × 12 inches
Gift of the artist, 2018.201

Clarence Morgan
American, born 1950
Zelda, 2017
Lithograph on paper
16 × 16 inches
Gift of Max Lepler and Rex L.
Dotson, 2018.202



Jennifer Bartlett
American, born 1941
House: Dots, Hatches, 1999
Screenprint on paper
38 × 38 inches
Gift of Bennett and Sylvia
Engelman, 2018.203

Daniel Buren
French, born 1938
1 + 2 = 3, 1998
Woodcut on paper
19⅝ × 47¼ inches
Gift of Bennett and Sylvia
Engelman, 2018.204

Cathy Richardson
American, born 1949
Homage to Margaret Mee,
2018
Glass
2⅞ × 2⅞ × 1¼ inches
Gift of the artist, 2018.205

Douglas J. Becker
American
Amoeba, 1985
Glass
2⅝ × 2⅞ inches
Gift from the Estate of Margaret
J. Clinton, 2018.206

Murano

Italian
Millefiori, ca. 1920
Glass
2½ x 3 inches
Gift from the Estate of Margaret J. Clinton, 2018.207

Roman

Cup, 1st-3rd century
Glass
2¾ x 2⅝ inches
Gift of U.S. Sugar, 2018.208

Audrey Flack

American, born 1931
Maquette for Civitas, 1988
Patinated and gilded bronze, cast glass flame
57½ x 12 x 17 inches
Gift of Louis K. and Susan P. Meisel, 2018.209

Gilles Demarteau

French, 1722–1776
Venus sur un Dauphin, n.d.
Crayon engraving on paper
11⅜ x 16⅞ inches
Gift of Dr. Jamile Trueba Lawand, 2018.210

Edward Moran

American, born England, 1829–1901
“Deigindisch,” Night Scene with Fisherman and Boat on Shore, 1895
Etching on paper
17¾ x 11⅝ inches
Gift of John and Janice Henry, 2018.211

Albert Young

American, born 1951
Untitled (Commission for Robinson Lawn), 1999–2000
Steel, cast glass
144 inches
Gift of the Family of Jack A. and Aviva Robinson, 2018.212

Richard Meitner

American, born 1949
Untitled, n.d.
Blown glass
22 x 27 x 7 inches
Gift of the Family of Jack A. and Aviva Robinson, 2018.213

Naoko Serino

Japanese, born 1962
Generating-3, 2004
Jute
14 x 20 x 13 inches
Gift of the Family of Jack A. and Aviva Robinson, 2018.214



A

Harvey K. Littleton
American, 1922–2013
Sliced Form, 1987
Blown and drawn glass, cut and polished
25½ x 6 x 3 inches
Museum purchase with funds donated by Jack and Stephanie A. Neal, 2019.1

Albert G. Richards

American, 1917–2008
Iris - German, ca. 1990–2000
Radiograph on paper
14 x 11 inches
Gift of Dr. Seymour and Barbara K. Adelson, 2019.2

Albert G. Richards

American, 1917–2008
Jack in the Pulpit, 1996
Radiograph on paper
14 x 11 inches
Gift of Dr. Seymour and Barbara K. Adelson, 2019.3

Albert G. Richards

American, 1917–2008
Lily - Solar, 1996
Radiograph on paper
14 x 11 inches
Gift of Dr. Seymour and Barbara K. Adelson, 2019.4

Luba

Democratic Republic of Congo
Comb, n.d.
Wood
8 inches
Gift of Dr. Robert Horn, 2019.5

>

Songye

Democratic Republic of Congo
Kifwebe Mask, n.d.
Wood
13½ inches
Gift of Dr. Robert Horn, 2019.6

Zulu

South Africa
Spoon, n.d.
Wood
17⅞ inches
Gift of Dr. Robert Horn, 2019.7

Kwere

Tanzania
Nganga's Healing Gourd, n.d.
Gourd, rope, wood
7¾ inches
Gift of Marlene and Reynold Kerr, 2019.8

Kwere

Tanzania
Maternity Figure, n.d.
Wood
24½ inches
Gift of Marlene and Reynold Kerr, 2019.9

Shepard Fairey

American, born 1970
Flint Eye Alert Globe, 2017
Screenprint on paper
24 x 18 inches
Gift of Elisabeth Saab and Chad Hansen, 2019.10

Abraham Anghik Ruben

Canadian, born 1951
Bear, 2006
Soapstone
2¾ inches
Gift of Samantha and Kerstin in memory of their beloved uncle, Thomas Calhoun, 2019.11

Dee Knott

American, 1943–2013
Untitled (shipwreck), n.d.
Watercolor on paper
8 x 12 inches
Anonymous gift, 2019.12

**Desiree Kelly**

American
Shields, born 1990
Oil and spray paint on traffic sign
35 x 35 inches
Museum purchase with funds from the Collection Endowment, 2019.13

Loans

The Flint Institute of Arts believes an effective way to enhance its reputation as an important cultural institution is to lend works of art from its permanent collection to other museums. Lending art promotes collegial relationships between museums, and provides national and international audiences exposure to works of art from the FIA's outstanding permanent collection. In addition, the FIA also borrows works from other museums, galleries, and collectors to supplement its permanent collection and exhibitions.

Loans from the Permanent Collection

The following artworks were on loan from the FIA to the following exhibitions:

The Cult of the Machine: Precision in American Art

9.16.18 – 1.6.19
Dallas Museum of Art
Dallas, Texas

Edmund Lewandowski

American, 1914–1998
Dynamo, 1948
Oil on canvas
36⅞ x 30⅞ inches
Gift of Mr. and Mrs. Harold L. Frank, by exchange, 1993.38

A Dark Place of Dreams: Louise Nevelson with Chakaia Booker, Lauren Fensterstock, and Kate Gilmore

9.28.18 – 1.6.19
Gibbes Museum of Art
Charleston, South Carolina

>

Chakaia Booker

American, born 1953
India Blue, 2001
Rubber tires and wood
73 x 43 x 48 inches
Bequest of Russell J. Cameron, by exchange, and partial gift from the Friends of Modern Art, 2002.11

Between Form and Content: Perspectives on Jacob Lawrence and Black Mountain College

9.28.18 – 1.12.19
Black Mountain College Museum and Arts Center
Asheville, North Carolina

Jacob Lawrence

American, 1917–2000
South African Gold Miners, 1946
Gouache on paper
20¼ x 19½ inches
Museum purchase with a grant from the Harvey J. Mallery Charitable Trust, 1991.23

Charles White: A Retrospective

10.2.18 – 1.13.19
The Museum of Modern Art
New York, New York
3.3.19 – 6.9.19
Los Angeles County Museum of Art
Los Angeles, California

Charles White

American, 1918–1979
Wanted Poster Series #17, 1971
Oil and pencil on poster board
60 x 30 inches
Gift of Mr. and Mrs. B. Morris Pelavin, 1971.43



John Singer Sargent

10.4.18 – 1.13.19
Nationalmuseum
Stockholm, Sweden

John Singer Sargent

American, born Italy, 1856–1925
Garden Study of the Vickers Children, 1884
Oil on canvas
54½ x 36 inches
Gift of the Viola E. Bray Charitable Trust via Mr. and Mrs. William L. Richards, 1972.47

Loans from the Permanent Collection

The following artworks were on loan from the FIA to the following exhibitions:

Nature's Nation: American Art and Environment

10.13.18 – 1.6.19

Princeton University Art Museum
Princeton, New Jersey

2.2.18 – 5.5.19

Peabody Essex Museum
Salem, Massachusetts

5.25.19 – 9.19.19

Crystal Bridges Museum of American Art
Bentonville, Arkansas

Hughie Lee-Smith

American, 1915–1999

Slum Lad, ca. 1960

Oil on canvas

26 x 32 inches

Courtesy of the Isabel Foundation, Inlander Collection, L2003.80

Once Upon a Time in America: Three Centuries of US-American Art

11.23.18 – 3.24.19

Wallraf-Richartz-Museum & Fondation Corboud

Cologne, Germany



Erastus Salisbury Field

American, 1805–1900

The Taj Mahal, ca. 1850

Oil on canvas

24¹/₄ x 34¹/₈ inches

Gift of Edgar William and Bernice Chrysler Garbisch, 1968.20



The Expressionist Figure

1.19.19 – 5.5.19

Kalamazoo Institute of Arts
Kalamazoo, Michigan

Milton Avery

American, 1893–1965

Bicycle Rider by the Loire, 1954

Oil on canvas

38 x 55 inches

Bequest of Mary Mallery Davis, 1990.19

Bob Thompson

American, 1937–1966

Study for St. George and the Dragon, 1961

Crayon on paper

21 x 14 inches

Museum purchase with funds from the Collection Endowment, 2015.61

The Color of the Moon

2.9.19 – 5.12.19

Hudson River Museum

Yonkers, New York

6.1.19 – 9.8.19

James A. Michener Art Museum
Doylestown, Pennsylvania

Thomas Chambers

American, born England, 1808–1869

Old Sleepy Hollow Church, ca. 1850

Oil on canvas

18³/₄ x 24³/₈ inches

Gift of Edgar William and Bernice Chrysler Garbisch, 1968.18

The Early Celebrity of Peter Paul Rubens

4.6.19 – 9.8.19

Fine Arts Museums of San Francisco Legion of Honor
San Francisco, California



Peter Paul Rubens

Flemish, 1577–1640

Angel, 1610–11

Oil on modern support transferred from wood panel

80¹/₂ x 57 inches

Gift of Viola E. Bray, 2005.158

Roger Brown: Virtual Still Lifes

5.2.19 – 9.15.19

Museum of Arts and Design
New York, New York

Roger Brown

American, 1941–1997

Virtual Still Life #15: Waterfalls and Pitchers, 1995

Oil on canvas with mixed media

37¹/₂ x 50 x 9 inches

Museum purchase, 2011.324

Lee Krasner

5.30.19 – 9.1.19

Barbican Art Gallery
London, England

Lee Krasner

American, 1908–1984

Happy Lady, 1963

Oil on cotton duck

58 x 75³/₄ inches

Purchased with funds from the National Endowment for the Arts Museum Purchase Grant and the Samuel and Alma Catsman Foundation, 1978.59



Science Paints Our World: Chemistry & Art

6.4.19 – 9.1.19

Midland Center for the Arts
Midland, Michigan



Joseph Drapell

Canadian, born Czech Republic, 1940

Gates of Life, 1998

Acrylic on canvas

84 x 95 inches

Gift of Anne Low, 2008.355

John Gittins

American, born 1940

Guadalupe, 1987

Acrylic on canvas

85 x 25 inches

Gift of the artist, 2008.341

Roy Lerner

American, born 1954

Getting Traction I, 1994

Acrylic, gel medium and screen on canvas

57¹/₂ x 33 inches

Museum purchase, 2000.51

Roy Lichtenstein

American, 1923–1997

Sweet Dreams, Baby!, 1966

Silkscreen on paper

39 x 28³/₄ inches

Museum purchase, 1966.6

Morris Louis

American, 1912–1962

I-31, 1962

Acrylic resin on unprimed canvas

83¹/₄ x 15¹/₂ inches

Museum purchase with funds from the J. L. Hudson Company Acquisitions Challenge Grant and contributions from the Viola E. Bray Charitable Trust and other donors, 1982.180

Marjorie Minkin

American, born 1941

Triton, 1995

Acrylic on lexan

36 x 19¹/₂ x 5¹/₂ inches

Gift of the Vero Beach Museum of Art, 2007.146

Irene Neal

American, born 1936

Inside Velvet, 1999

Acrylic on canvas on board

82 x 42 x 2 inches

Gift of Irene Neal, 1999.32



Bruce Piermarini

American, born 1953

Caterpillar Crawl, 2001

Acrylic and foam on canvas

80 x 30 x 16 inches

Gift of the artist, 2005.1

Jerald Webster

American, born 1953

Rites of Spring, 1992

Acrylic on canvas

42¹/₄ x 78 3/8 inches

Gift of the artist, 2001.2

Life is a Highway: American Car Culture

6.15.19 – 9.15.19

Toledo Museum of Art
Toledo, Ohio



Claes Oldenburg

American, born Sweden, 1929

Profile Airflow, 1969

Molded polyurethane over lithograph on paper

33¹/₂ x 65¹/₂ inches

Museum purchase, 1970.19

© Claes Oldenburg

Mel Ramos

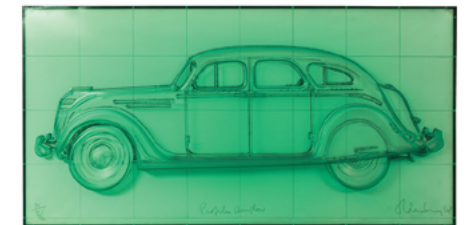
American, 1935–2018

AC Annie, 1972

Offset lithograph on paper

30¹/₄ x 24¹/₂ inches

Museum purchase, 1977.7



Loans to the Permanent Collection

The following artworks were on loan to the FIA:

Auguste Rodin
French, 1840–1917
The Three Shades, MR cast 10
in 1981
Bronze
41 × 38 × 21 inches
On loan from Iris Cantor, L2018.2



Abraham Bisschop
Dutch, 1630–1731
*A Peacock, Turkey, and
Chicken with her Chicks beside
a Classical Fountain in a
Landscape*, n.d.
Oil on canvas
69³/₄ × 48¹/₂ inches
Courtesy of Lawrence Steigrad Fine Art,
New York, L2019.2

Pablo Picasso
Spanish, 1881–1973
*Femme nue de dos (Back of a
Nude Woman)*, 1956
Etching on paper
14¹/₁₆ × 11 inches
Private collection, L2019.4

Kenny Scharf
American, born 1958
Bear Jungle, 2010
Oil, acrylic and spray paint on
canvas
96 × 120 inches
Courtesy of David Klein Gallery - Detroit,
L2019.6

Pablo Picasso
Spanish, 1881–1973
Femme Assise, 1927
Oil on canvas
51¹/₂ × 38¹/₂ inches
Collection Art Gallery of Ontario, Toronto.
Purchase, with assistance from the
Women's Committee and anonymous
contributions, 1964. Acc. 63/44, L2019.1



Picasso & Cubism exhibition, Dow Gallery

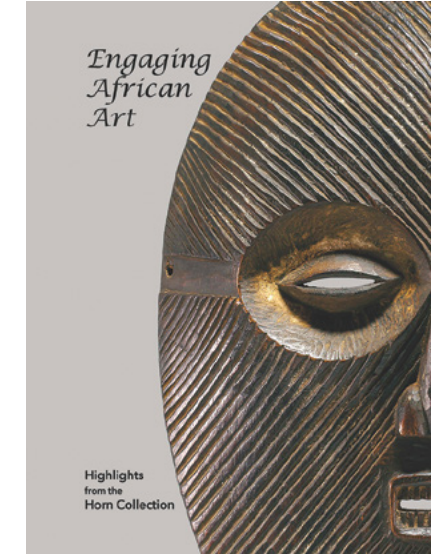
Pablo Picasso
Spanish, 1881–1973
*Visage de Marie-Thérèse
(Bloch 95)*, 1928
Lithograph on paper
8 × 5⁵/₈ inches
Courtesy of John Szoke
Gallery, New York, L2019.3

Pablo Picasso
Spanish, 1881–1973
Deux Nus Assis, 1930
Etching on paper
9⁷/₈ × 7 inches
Private Collection, L2019.5

Publications

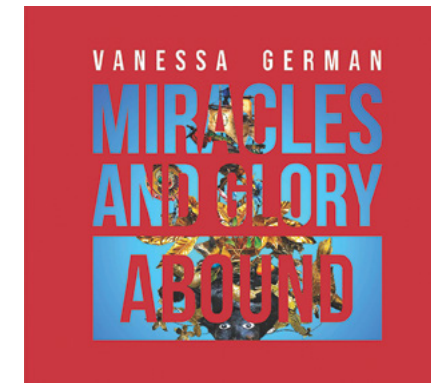
Publications are one of the many tools museums have to disseminate information about art in their collections through new research and up-to-date photography. These books are offered for sale to visitors, providing a lasting memory of their visit. Additionally, these publications are gifted to other museums to share knowledge and create opportunities for future collaborations. In fiscal year 2018–19, the FIA published two exhibition catalogues, featuring African art from the Dr. Robert Horn collection and contemporary sculpture by Vanessa German.

Engaging African Art: Highlights from the Horn Collection



This catalogue was published in conjunction with the *Engaging African Art* exhibition that featured highlights from Dr. Robert Horn's collection of African art. The book included more than eighty works of sculpture from West and Central Africa. An essay by Detroit Institute of Arts Co-Chief Curator and Department Head, Africa, Oceania, and Indigenous Americas Nii O. Quarcoo offered an overview of the Horn Collection and its significance. University of Wisconsin-Madison Professor Henry John Drewal contributed an essay on Yoruba art, which makes up an important part of Dr. Horn's collection.

Vanessa German: Miracles and Glory Abound



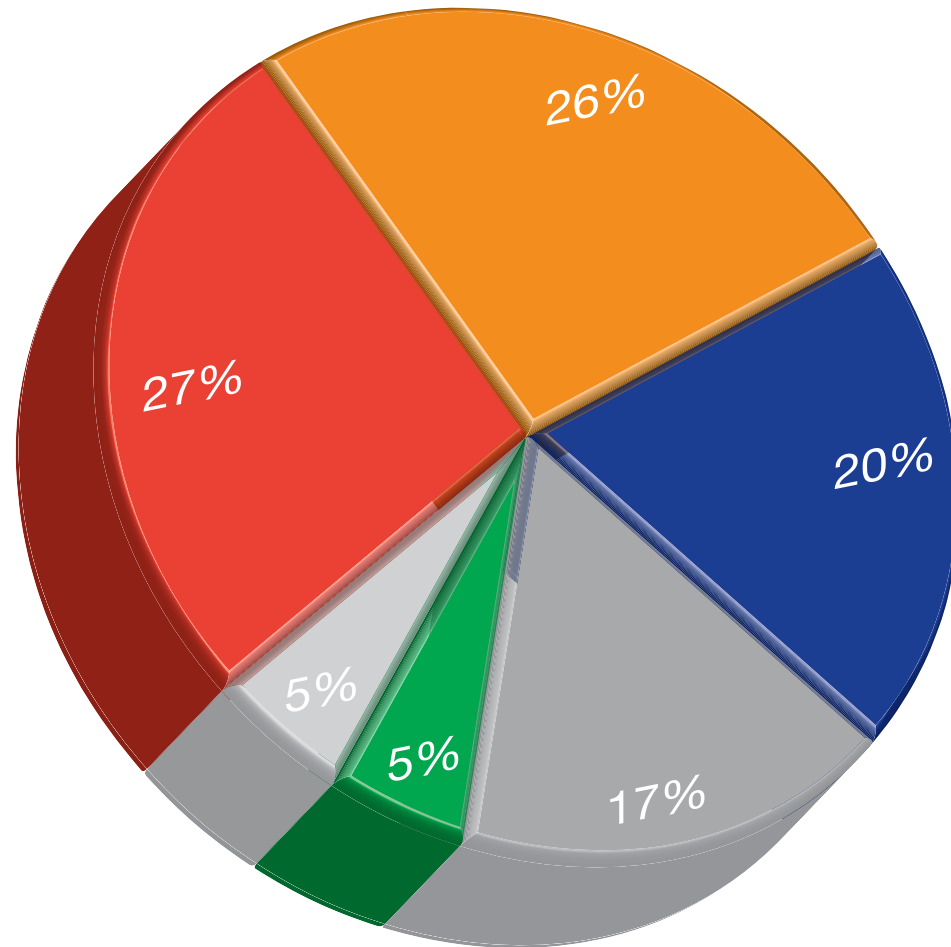
Published to accompany the traveling exhibition *Vanessa German: Miracles and Glory Abound*, this catalogue featured essays that contextualized German's work as a sculptor, poet, and installation artist. Performance Artist and Educator Holly Bass considered the "periodic tableau of elements" in the artist's work, surveying the elements of color, time, and sound. Loughborough University Professor Hilary Robinson examined German's use of assemblage and how her work is in conversation with those by other African American artists. Artist and Poet Daniel Simmons considered German's use of found objects and the similarities to African *nkisi* sculpture. After its showing in Flint, the exhibition traveled to Figge Art Museum in Davenport, Iowa, and Bates College Museum of Art in Lewiston, Maine.

Development

The Development Department is responsible for all areas of funding for the Flint Institute of Arts. The department manages audience development, public and community relations, promotion and marketing, internet and social media, and the FIA website.

Income

The FIA has six primary sources of support: county millage, endowment income, grants, contributions, earned income, and membership.



- Millage
- Endowment Income
- Grants
- Contributions
- Earned Income
- Membership

County Millage

In August of 2018, the Genesee County Arts Education and Cultural Enrichment Millage passed. The ten year millage contributes funds to the FIA's general operating budget. In fiscal year 2018-19, the \$1,664,832 millage funding was 27% of the operating budget.

Endowment Income

Both restricted and unrestricted, endowment funds support general operations, exhibitions, programs, art acquisitions, art conservation, scholarships, lectures, and membership initiatives. As of June 30, 2019, the endowment funds totaled \$32,586,063 contributing 26% to the annual income. Unrestricted donations in the form of planned gifts and bequests are traditionally allocated to endowment.

Grants

The FIA receives grant awards from foundations, community organizations, businesses, corporations, and state and federal governments. Revenue from grants represents 20% of the FIA's annual income. The FIA receives support from two auxiliary groups, the Founders Society and Friends of Modern Art (FOMA).

Contributions

Sponsorships, annual appeal gifts, memorials, donations, and funding of specific programs or events represents income sources in this category, which contribute 17% of the FIA's annual income.

Earned Income

Income generated from sales, tuition, facility rentals, special events, and admissions provide 5% of the FIA's operating income.

Membership

Membership dues represent 5% of the FIA's general operating support and begin at \$20 for Youth and Student levels and progress to \$1,000+ for the Rubens Society level. Basic benefits are enjoyed by all, and higher level donors receive extended benefits, such as reciprocal membership privileges to over 900 museums nationwide, at the Sustainer level (\$100) and above. The Rubens Society generates more than \$100,000 to the budget and Society members are invited to three exclusive events throughout the year. FIA Art School members receive a discount on art classes. Of new members who joined the FIA, 18% joined through the Art School.

The Flint Print Club was established in 2007. The club is limited to 100 members who, after first becoming a member of the FIA at the Family level (\$50) or above pay an annual club fee of \$250 and receive a commissioned print by a critically acclaimed artist. The club is dedicated to connoisseurship, the pursuit of personal collecting, and the purchase of prints to augment the FIA's collection.

The FIA College Town initiative provides free membership to college students nationwide. Students with a valid ID receive basic membership benefits with invitations and other announcements received via email.

Please see pages 35-43 for this fiscal year's membership listing.

Donors to and members of the FIA provide the foundation for all the FIA's activities.



Through the Looking Glass characters were brought to life during the 2018 Rubens Society Holiday Dinner. Rubens Society member, Lynne Hurand, poses with the fair Alice, the stern Queen of Hearts, and the charismatic Mad Hatter.

Art School

The FIA Art School is dedicated to the enrichment of the community through individual academic exposure to the visual arts. Highly qualified faculty offer instruction in drawing, painting, photography, animation, fibers, ceramics, sculpture, pre-college portfolio development (PDP), printmaking, glass, and early childhood art. Since 1928, the Art School has operated continuously, helping students develop a wide range of artistic goals and skill levels. Programs are designed to support the mission of the FIA with dynamic curricula that engages students and the community through creative processes, studio experiences, and gallery exhibitions.

Programming

The Art School offers more than 450 different courses and workshops each year covering a wide range of visual arts topics and disciplines. These courses form the core of the Art School's programming and include more than 2,000 individual registrations per year. In addition to this primary focus, the school provides a number of other opportunities, outreach programs, exhibitions, and events throughout the year.

The FIA/McLaren Flint collaborative program, Healing Through Art Therapy, generated 128 encounters during the fiscal year 2018–19 with art therapists Gail Singer and Erin Keith.

The Art School partnered with the Food Bank of Eastern Michigan to produce more than 1,700 handmade ceramic bowls for the Food Bank's annual Empty Bowls Project, which helped raise over \$40,000 to support food distribution efforts.

The Pre-College Portfolio Development Program (PDP) is a multi-semester course of study that provides serious high school artists with college-level studio arts instruction. In addition to the development of studio skills, students and families are provided art-specific college counseling which focuses on art programs and individual student interests. In December, PDP welcomed 18 new students. Representatives from college art programs, including Milwaukee College of Art and Stamps School of Art and Design at the University of Michigan, visited the program. Eleven seniors graduated from the program and reported college acceptances at their first choice schools and reported scholarship offers including a \$20,000 annual scholarship to College For Creative Studies in Detroit and \$25,000 annual scholarship to the School of Visual Arts in New York City.

The 8th Annual FIA Art School LEGO Competition and Event was held at the FIA on Saturday, April 13, 2019. Ninety-nine children in grades K-12 entered original sculptures made entirely from LEGO bricks to be judged in several categories. Awards were given to 48 children in grades K-2, 11 children in grades 3-5, three children in grades 6-8, and four teenagers in grades 9-12. Awards were purchased using donations from Sovita Credit Union and Dr. Shawn Reiser and Dr. David Taylor from Community Podiatry Center. Barnes & Noble donated additional LEGO kits. The event was attended by 714.

The Art School continued its partnership with the Disability Network of Flint and Genesee to provide accessible art classes to adults with a range of disabilities. Disability Network instructors and aides teach classes twice a month in an Art School studio and logged 308 encounters this year.

The Glassblowing Hot Shop ran 68 courses and workshops serving 238 students as well as 12 studio soirees serving 131 people. Visiting Glass Artist Jeff Mack completed a studio residency at the Art School during the week of December 2–9, 2018. Mr. Mack used the residency to create a new body of work as part of his individual artistic practice. His residency in our hot shop was open to the public, allowing museum and school visitors the chance to see a prominent glass artist at work and to ask questions and learn about the techniques and aesthetics of his work. Mr. Mack gave a public slide lecture on his work and the historic glass techniques that he utilizes. Twenty people attended the lecture. He also gave formal narrated demonstrations in the hot shop on Saturday, December 8, which were attended by 129 people. He utilized FIA faculty, students, and apprentices in the work, which expanded the educational opportunities for our students. The Hot Shop provided formal glass blowing demonstrations throughout museum hours every Saturday. During fiscal year 2018–19, 5,456 people attended these free demonstrations. Objects made during the demonstrations were offered for sale in the Art School gallery.

As the preeminent studio facility in the mid-Michigan region, the Art School is a tremendous asset to the educational community in the area. Beginning in September 2018, the Art School collaborated with University of Michigan Flint's Fine Arts Department to offer courses to UM-Flint students in the Art School's new

Enrollment

Summer 2018, 400 students
Fall 2018, 568 students
Winter 2018–19, 477 students
Spring 2019, 587 students

Scholarships

The Art School granted \$20,345 in scholarships for the 2018–19 FY to 141 students (75 youth scholarships and 66 adult scholarships).

Flameworking Studio. These courses were offered for credit to UM-Flint students and were led by UM faculty. This collaboration was celebrated in a public panel discussion held at the Ferris Building and featured Art School Director Donovan Entekin, UM-Flint Instructor Cristen Velicky, and UM-Flint Associate Dean of the College of Arts & Sciences Dr. Roy Barnes.

Free family activities are designed to serve participants ranging in age from 3.5 through adult and help to expose a wider range of families to the opportunities available at the FIA. Families are encouraged to participate in themed, hands-on projects in the Art School studios utilizing a wide variety of techniques and mediums. Activities included printmaking in which children used real vegetables dipped in paint to create colorful compositions and a painting workshop based upon the works of contemporary artist Yayoi Kusama. This year, the Art School offered 9 free family activities, totaling 1,178 participants.



A representative from Stamps School of Art & Design of the University of Michigan, Ann Arbor provides feedback to student, in the FIA's Pre-college Portfolio Development Program.

Education

The Flint Institute of Arts is committed to promoting understanding and enjoyment of the visual arts through high quality art education programs. We believe art is a vital component of life and that learning is a lifelong process. Our educational programming provides dynamic and enriching experiences for people of all ages with all levels of familiarity with art.

Our programs invite people to gain greater understanding and enjoyment of the FIA's outstanding permanent collection and special exhibitions. They are designed to present learning opportunities that are rich in content and stimulate imagination, thought and creativity.

Education programs served a total of 54,107 during the fiscal year.

K-12 Programs

PreK-12 programs served 39,409. Nineteen percent participated in gallery lessons, 18% in studio activities, 62% in outreach programs, and 1% in self-guided visits/other. Eighty-seven percent of students attended public schools, 4% private schools, and 9% homeschool/charter schools, with 91% of the schools located in Genesee County. The remaining 9% of schools served were from Ingham, Lapeer, Livingston, Saginaw, St. Clair, St. Joseph, Tuscola, and Washtenaw counties.

Docents

Docents are integral to the Education department. Sixteen volunteers were involved in the docent program in fiscal year 2018-19 and participated in intensive training sessions from September through May. Docents assisted with 309 gallery and studio programs and served 4,642 people, resulting in 1,358 hours of service. In addition, nine people participated in new docent training.

Active Docents

Oya Agabigum
Lavonne Bomeli
Tom Butts
Janet Cameron
Susan Damone
Daiva Devereaux
Patty Duffy
Kathy George

Alfreda Harris
Dena Hillman
Lynne Hurand
Christine Jones
Belle McPhee
Jeanette Nassif
Kate Nickels
Kathy Weiner

Docents in Training

Karen Callewaert
Carol Dowsett
Harold Ford
Anne Heidel
Pam Kenny
Junko Miller
Nancy Peske
Derald Schnepf
Trudy Winstanley



Students explore the Contemporary Craft Wing.

Special Events & Facility Rentals

The Flint Institute of Arts offers an active schedule of events for members and the general public throughout the year, including Holiday Walk, the Founders Society's First Frost Arts & Fine Crafts Fair, and the Friends of Modern Art's Annual Flint Art Fair. Annual fundraisers at the FIA are diverse and appealing to all demographics. A committee of devoted and hard-working volunteers are active in all areas of planning each event. From Beer Tasting and Wine Tasting to the Community Gala and The PARTY, the FIA continues to create a varied palette of events to engage the community and raise funds for the Institute.



Art on Tap: Beer, Bourbon, BBQ, 2018

Sheppy Dog Fund Lectures 8.8.18, 11.14.18, 11.27.18, 3.13.19, 4.9.19

The Sheppy Dog Fund Lecture was established to address the topics of art, religion, and history prior to the 19th century, and is funded by The Sheppy Dog Fund, Dr. Alan Klein, Advisor. Presented were the following lectures: August 8, 2018, *Rembrandt's Representations of Biblical Scenes* by Dr. Shelley Perlove; November 14, 2018, *Piecing Together the Past: A Curatorial View of Mosaics in Israel* by Tracee J. Glab; November 27, 2018, *Unveiling Ancient Beauty: The Hidden Art of Restoration in the Vatican Museums* by Dr. Kevin Lixey; March 13, 2019, *Sublime Transmutation: The Art and Science of Alchemy* by Dr. Justin Sledge, and April 9, 2019, *Michelangelo's Sistine Chapel... 507 Years* by Dr. William E. Wallace.

28th Annual Thompson Lecture 10.2.18

The Thompson Lecture was established in 1991 by Dr. and Mrs. Jack W. Thompson to enable the Flint Institute of Arts to present a distinguished speaker in the arts or humanities each year. Held in October each year, the Thompson Lecture is one of the Institute's few members-only events and was established, in part,

to attract new members to the FIA. Dr. James Fox presented his lecture *Darkness Visible: A History of Black*.

10th Annual Art on Tap: Beer, Bourbon, BBQ 10.5.18

Held on a Friday evening between September and October, Art on Tap is a casual tasting held under multiple tents in the FIA's south lot. The event includes an exclusive selection of beers and bourbons, delicious BBQ fare, art demonstrations, live entertainment and more. Proceeds raised support museum programming and outreach programs for PreK-12 students. **Event Sponsors:** Al Serra Auto Plaza, Applegate Chevrolet, Attorney Eric McCormick, BB & E, James & Kathryn Boles, Mrs. Edmund Brownell, Dee Cramer Inc., Dr. Shawn Reiser & Dr. David Taylor, Jean Dundas for Founder's Society, Harry & Kathy Eiferle, Fifth Third Bank, Gill-Roy's Hardware, Hank Graff Chevrolet of Davison, Carol & Gary Hurand, Jeff & Barb Hurand, David Kelly of Raymond James, Kettering University, Chene Koppitz, Jamile T. Lawand, Lewis & Knopf CPAs, Mark & Charlotte Lippincott, Thomas Mitchell, Drs. Bobby & Nita Mukkamala, Dr. & Mrs. Kienan F. Murphy, Jay & Marilyn Nelson, Olmsted Associates, Prudential, Ann & Khalil Saab, Martha & Tim Sanford, Jim & Patt Spangler, The Genesee Group, The Torch Bar & Grill, Tom & DeAnn Townsend, Werschky & Lewis Family Dentistry, Yeo & Yeo CPAs & Business Consultants



2019 Community Gala, Vanessa German: *Miracles and Glory Abound* exhibition

12th Annual First Frost Arts & Fine Crafts Fair

11.3.18 – 11.4.18

This unique art fair within the FIA is a fantastic weekend of shopping for visitors near and far. Organized by an FIA auxiliary group, The Founder's Society, First Frost features a wide variety of hand-selected artists, silent auction, holiday trees and wreaths, bake sale, living sculptures, and glass blowing demonstrations.

Sponsors: Jeneil Wright Applegate, Berkshire Hathaway Home Services, Jean & Chris Dundas, Maggie Hart, Lynne Hurand, The Laundry, Robert & Mary Van Duyne, Dr. & Mrs. Nallupu & Saroja Reddy, Sharp Funeral Home, Ernelle Taylor, Thinkschlink Real Estate Team, Zito Construction

Holiday Walk

12.4.18

Holiday Walk is a family friendly event put on throughout the Flint Cultural Center. The FIA offered a special meet and greet with the beloved PBS character Arthur, screening of *Elf* in the FIA Theater, guided craft and glassblowing demonstrations in the Art School, and musical entertainment throughout the galleries. It was a festive evening for all!

12th Annual Community Gala

1.26.19

In celebration of Black History Month, the Community Gala is a diversity initiative presented in conjunction with an exhibition opening. This year presented two exhibitions, *Vanessa German: Miracles and Glory Abound* and *Engaging African Art: Highlights from the Horn Collection*. The evening featured a performance by Vanessa German, opening of the exhibitions, strolling supper, and live musical entertainment. Proceeds directly support exhibitions and expand the African American art collection.

Event Sponsors: Mr. Leon & Mrs. Pat Adams, AAA Michigan - Renee Sanders, Ace-Saginaw Paving Co., Henry & Mary Allen, Alpha Kappa Alpha Zeta Beta Omega, APTC, Archaea Rajan, DDS & Symantec Ram, Ascension, Baker College, James & Kathryn C. Boles, Mrs. Edmund B. Brownell, C & S Motors, Floyd & Brenda Clack, Communities First, Inc., Consumers Energy, Cracker Barrel, Delta Sigma Theta Sorority, Inc., Dr. & Mrs. John Hebert, Dr. Tolutopu Oyasiji, Edward Jones - Eric Gasper, Elga Credit Union, Eric S. Peterson & Associates Mortgage Lenders LLC, The Flint Area (MI) Chapter of the Links Incorporated, John & Cathy Fredericks, The Friends of Berston Field House, Dr. Raymond F. Gist DDS, Grace Emmanuel Baptist Church,

The Greater Flint Chapter of the Pierians, Inc., Bobbie J. Greer, Hamilton Community Health Network, The Hamo Group of Wells Fargo Advisors, HAP, Louis Hawkins, Gary & Carol Hurand, Lynne Hurand, Hurley Medical Center, Prasad & Jayashree Kommareddi, Chene Koppitz, Jamile T. Lawand, Leo's Coney Island, Maggie Hart, Maria Gonzalez & Glen Adams, Sean & Eureka McCormick, McLaren Flint, Miller Road Applebee's, Mr. Mark & Mrs. Becky Miller, Thomas J. Mitchell, Bill & Kitty Moeller, Mr. Roland & Mrs. Cynthia Morsee, Mott Community College, Mr. & Mrs. John McKenney, Mr. & Mrs. Sam Cox, Mr. & Mrs. Tyrone Jordan, Drs. Bobby & Nita Mukkamala, Dr. & Mrs. Kienan F. Murphy, Olmsted Associates, Inc., Patrick and Gloria Tyus, Plante Moran, PNC Bank, Prestige Promotions powered by Proforma, Dr. & Mrs. Lawrence Reynolds, Mr. Milton & Dr. Brenda Rogers-Grays, Mr. & Mrs. Dwight & Lisa Rogers, Michael & Virginia Rucks, The Rutherford Group, Daniel J. & Mary C. Ryan, Ann & Khalil Saab, The Serra Foundation, Chuck & Kathryn Sharbaugh, Dr. Robert & Mayor Susan Soderstrom, James & Patt Spangler, Shelley Spivack & Linda Pylypiw, Woodrow Stanley, Alvern & Theresa A. Stephens-Lock, Ernelle Taylor, The Williams Firm, Timothy & Melinda Johnson, Todd & Lisa Wiseley, Totem Book Store, Town Center Family Dental, Terry Turner, University of Michigan - Flint, Valley Area Agency on Aging, Dr. Wrex & Karen Weaver, Dr. & Mrs. Jay Werschky

20th Annual Wine Tasting

4.6.19

In partnership with the Junior League of Flint, *Wine Tasting: Viva España* featured a wide variety of international and domestic wines with a focus on Spain, with gourmet fare from local restaurants and bakeries, light music, and elegant decor. Proceeds raised support museum programming and outreach programs for PreK-12 students, as well as the Junior League of Flint and its community partners.

Event Sponsors: Attorney Shelly McFarlane, Ameriprise Financial, Attorney Matthew Norwood, Kay & Michael Behm, Bennett Communication Solutions, Dr. Cathy Blight & Mr. Edward Davison, Charles & Pamela Boike, Mrs. Edmund Brownell, Community Podiatry Group, David Kelly of Raymond James & Associates, Flint Cultural Center Corporation, FUNchitecture, Drew & Cathy Gentry, GM - Flint Engine Operations, William Hentgen, Gary & Carol Hurand, Lynne Hurand, Gidget Keefer, RJ Kelly III,

Dr. Mona & Samasandrapalya Kiran, Lewis & Knopf CPAs, Todd & Julie McCredie, Mike Foskett Plumbing, Thomas J. Mitchell, Dr. Bobby & Nita Mukkamala, Olmsted Associates, Rebecca Pettengill, Piper Realty Company, James & Gail Polehna, Roy, Noye & Warren CPA, PC, Ann & Khalil Saab, Leo & Elizabeth Solano, Jim & Patt Spangler, Still Waters Massage Therapy, The Torch Bar & Grill, Xcelerated IT Strategies, Dr. & Mrs. Curtis Yapchai

Food Sponsors: 501 Bar & Grill, Andiamo Fenton, Cork on Saginaw, Fireside Coffee Co., Mexico in the Market, Redwood Steakhouse, Semi-Sweets, Table & Tap

Art School LEGO Competition

4.13.19

Encouraging creative play, the Art School's Lego Competition is held annually each spring. Children in grades K-12 may submit original LEGO sculptures for jury and prizes are awarded in a variety of categories. Selected works are on exhibition in the Art School the following week. Activities at the event include open lego building and a film.

Sponsors: Barnes & Noble, Community Podiatry Group: Dr. Shawn Reiser & Dr. David Taylor, Sovita Credit Union

10th Annual The PARTY

6.1.19

The PARTY is held annually on the first Saturday in June and is the most exclusive FIA event of the year. Patrons have come to expect the unexpected in theme, food, and diversity of entertainment in a completely transformed museum. This year's theme was *Art of the Future*. Proceeds benefit FIA programs and exhibitions.

Event Sponsors: Al Serra Auto Plaza, All-Weather Seal, American Machining, Inc., ATI Group, Attorney Matthew L. Norwood, Big Top Tattoo/Signature Tattoo, Bodman PLC, Mrs. Edmund Brownell, Cline, Cline & Griffin PC, Community Foundation of Greater Flint, Consumers Energy, Cooper Commercial, Dr. Kiran & Laxmi Devisetty, Flint & Genesee Chamber of Commerce, FUNchitecture, Gasser Bush Associates, Ms. Maria Gonzalez & Mr. Glen Adams, Greater Flint Imaging, Hank Graff Chevrolet, William Hentgen, The Hurand Family, Hurley Foundation, Jennifer Lasco Real Estate, John Wentworth Group, Janna Jones, Kettering University, Michael & Manisha Kia, Drs. Prasad & Jayashree Kommareddi,

Facility Events

The rental and partnership programs generate earned income through the use of public spaces such as the lobby, Isabel Hall, theater, board and lecture rooms, and the courtyard. The FIA hosted many groups, organizations, and businesses this fiscal year, including the AARP, C.S. Mott Foundation, Communities First, Community Foundation of Greater Flint, East Village Magazine, Flint & Genesee Chamber of Commerce, Flint Jewish Federation, Flint Physicians of Indian Origin, Genesee Intermediate School District, Greater Flint Health Coalition, Huntington Bank, Institute of Rhymes, Kettering University, McLaren Flint, Mott Community College, Schussmeister's Ski Club, Snider Financial, Society of Environmental Journalists, University of Michigan - Flint, and Zonta Club. Events included many private functions for family and business receptions (i.e. award ceremonies, film festivals and screenings, holiday parties, luncheons, networking/client receptions, lectures, meetings, retirement celebrations, wedding ceremonies/receptions and more.)

James & Harriet Lay, Mass Transportation Authority, Olivia Maynard & Olof Karlstrom, Todd & Julie McCredie, McLaren Flint, Merrill Lynch, Mott Community College, Drs. Bobby & Nita Mukkamala, Dr. & Mrs. Kienan F. Murphy, Olmsted Associates, Inc., Suellen J. Parker PC, Piper Legal, Victor & Inga Rabinkov, Rama D. Rao MD, ROWE Professional Services Company, Ann & Khalil Saab, Scott B. Karlene MD & Kevin J. Gaffney MD Dermatology, Servpro of Fenton & NW Genesee County, Shultz Automation, Sheila R. Smith, Sorensen Gross Company, Stephens Wealth Management, The Karwaski Group at Morgan Stanley, The Torch Bar & Grill, Tito's Handmade Vodka, Tom & DeAnn Townsend, University of Michigan - Flint, Werschky & Lewis Family Dentistry, WJRT (ABC12)

52nd Annual Flint Art Fair

6.8.19 – 6.9.19

Attracting thousands of visitors each year, this summer event held on the second weekend of June is located on the grounds of the FIA and is organized by the auxiliary group Friends of Modern Art (FOMA). The art fair is juried to ensure the highest caliber of artists and has introduced works from as many as 175 established and emerging artists from Michigan and beyond.



The PARTY: *Art of the Future*, 2019

Auxiliary Groups

Friends of Modern Art

Letter from the President,
Lynne Taft-Draper



Each year, volunteer support groups donate time and effort in support of exhibitions, art acquisitions, and programs. The Flint Institute of Arts is deeply grateful to the members of the Friends of Modern Art and the Founders Society for their generous contributions.

Fiscal year 2018-19 was another busy and successful year for the Friends of Modern Art. The annual FOMA Member Event was held on the last Sunday in March 2019 with record-breaking attendance of more than 120 members and guests. Mimosas were served in the new Glass Galleries with brunch following in Isabel Hall where the group was divided in two for glass blowing demonstrations in the Hot Shop. Attendees were also invited to the FOMA afternoon film in the FIA Theater.

In memory of FOMA Board member Dr. Sarah Lippert, FOMA purchased new technology for the FIA Theater that will allow FIA lectures to be published online in her memory. Sarah was an Associate Professor of Art History at UM-Flint and an accomplished scholar dedicated to her students, to art history, and to bringing scholarly research to the forefront.

During fiscal year 2018-19, FOMA's contributions to the Flint Institute of Arts included support of the exhibition and catalogue of "power figure" sculptures titled *Vanessa German: Miracles and Glory Abound* on view in the FIA's Henry Gallery from January 27 through April 21, 2019 serving 13,813 visitors to the FIA. In addition, FOMA purchased from the FIA's *Art of Collecting* exhibition, a very large (93¹/₄ x 63¹/₈ inches) charcoal on paper titled, *Alice*, by American artist Clio Newton.

The second weekend in June marked the 52nd Annual Flint Art Fair. Overall, the event attracted more than 6,000 visitors, eight food vendors, and featured nearly 150 artists including several faculty and students from the University of Michigan-Flint art department and the FIA Art School. We are very excited to provide our patrons a glimpse of the next generation of artists and at the same time provide real experience for students in one of the many ways to have a successful career in art.

The FOMA Film Series, which ran between Labor Day and mid-June, had another successful year. Total attendance was 6,430, an average of 173 patrons per week. The highest total weekend attendance figures for individual titles were 313 patrons for the Academy Award-nominated drama *The Wife*, 269 for the Halloween-week horror comedy *Madame Hyde*, and 267 for the Academy Award Nominated Shorts. Another particularly successful weekend brought the new scripted feature *Stan & Ollie* together with a program of 1930s Stan Laurel-Oliver Hardy short films and attracted a total of 287 patrons.

I would like to thank the members of the FOMA Board and the many volunteers who contributed their time and energy to help achieve these accomplishments.

Officers

Lynne Taft-Draper
President
Michael Rucks,
Vice President
Jamile Lawand
Secretary
Michael Melenbrink
Treasurer (interim)

Board of Trustees

Galina Britton
Buke Hiziroglu
Dr. Linda Johnson
Meghan Kelly
Tim Kranz
Dr. Sarah Lippert
Ginny Rucks
James Shurter
Ja-Neen Wooten



Friends of Modern Art Flint Art Fair



Founders Society First Frost Arts & Fine Crafts Fair

Founders Society



Letter from the President,
James D. Draper

The Founders Society pledged \$35,000 in support of the Flint Institute of Arts during fiscal year 2018-19—\$20,000 for *The Art of Collecting* exhibition and \$15,000 for the Graphics Gallery. A check for \$35,000 was presented to the FIA on June 18, 2019 at our end of fiscal year business meeting.

Founders membership dues are \$10/year, which includes two complimentary passes to First Frost. Dues income for the fiscal year 2018/19 was \$3,225.

In October 2018 Founders hosted a food truck event with over a dozen food trucks on the grounds of the FIA. Although hampered by rain most of the day, we did net \$693.

The 2018 net revenue from First Frost, the first weekend in November, was \$12,205. Founders hosted this event exclusively in Isabel Hall and the FIA lobby. This was a smaller venue than in all prior fairs, which reduced the number of participating artists by 40%.

First Bloom: Artful Bling & Pleasing Things, our new spring time, one-day event with an emphasis on jewelry, accessories, and fashion-wear was held in April 2019 at the Flint Farmers' Market. It netted \$1,200. For next year, it will be transitioning to a 2-day event and will be held at the new Flint Cultural Center Academy.

Our travel and tours committee generated a net income of \$600. We are exploring hosting more local, one-day trip venues in addition to worldwide travel opportunities. In September 2020, we are currently in the planning stages for an exclusive trip to Brussels, Belgium, which will include a visit to Isabelle de Borchgrave's studio. This is a follow-up to a personal invitation that the artist extended to the FIA during her *Au Revoir Soiree* event in the Bray Gallery in September 2019 to celebrate the end of her successful FIA exhibition.

On December 3, 2018, we hosted our traditional holiday luncheon for all FIA staff members in Isabel Hall. It was our way to thank the FIA staff for the many ways in which they assist the Founders Society helping it fulfill its mission.

Income received from our various activities has enabled the Founders Society to fund our FIA pledge and leave us with a current balance of \$69,950. In addition to our fundraising activities this past year, members of the Founders Society have collectively donated hundreds of hours of service to the ultimate benefit of the Flint Institute of Arts. The Founders Society as an organization remains strong and is committed to the support of the Flint Institute of Arts for now and into the future.

Officers

James Draper
President
Bob Turley
Vice President
Candi Pfaff
Recording Secretary
Ernelle Taylor
Corresponding Secretary
Buke Hiziroglu & Sam Burdick
Treasurers
Lynne Hurand
Immediate Past President

Board of Trustees

Ann Chan
Mary Coleman
Chris Dundas
Shirley Epps
Cathy Fetters
Colleen Ford
Rick Fortner
Lestine Gheresus
Maggie Hart
Hulya Hiziroglu
Christine Jones
Judith Ingram
Marilyn Kopp
Jean Liming-Dundas
Elizabeth Marasco Brady
Perry Ann Owen
Saroja Reddy
Sherry Schlinker
Dr. Sharon Simeon
Audrey E. Stephens
Carol Turley
Bob Van Duyne
Mary Van Duyne
Susan Yeotis
Trish Zito-Smith

Contributions

Annual Appeal

Ms. Denise Ahonen
 Mrs. Dolores R. Allen
 Anonymous
 Valarie & Steven Bailie
 Mr. Carroll G. Baker & Ms. Kimberly Roberson
 Dr. & Mrs. William D. Beck & Kristen
 Mrs. Doris Beebe
 Frederick & Barbara Bellairs
 Mr. & Mrs. Stephen Bernstein
 Ms. Mary K. Bickley
 Jane Bingham
 Ms. Elizabeth Bishop
 Susan Steiner Bolhouse & William S. Ballenger III
 Ms. Dolores Borrow
 Ms. Monica Brown
 Mrs. Edmund Brownell
 Mr. & Mrs. Tom E. Butts
 Mr. & Mrs. Adam Carlson
 Lt. Gov. John D. Cherry & State Rep. Pamela Faris
 Ms. Kay E.M. Cherry
 Mr. & Mrs. Bruce T. Colasanti
 Mrs. Mary Coleman
 Mr. & Mrs. Sylvester Collins
 Mr. & Mrs. Chapin Cook
 Mr. & Mrs. George Cross
 Ms. Dorothy Gae Davis
 The Day Family, In memory of Madge Day
 Mrs. Rosemary R. DeCamp
 Mr. & Mrs. James DelDuca
 Mr. John V. Dempsey & Ms. Margo Lakin, In memory of Ramon Hill
 Ms. Stephany R. Diana & Mr. Dennis Zawol
 Ms. Jeanne Dobes
 Ms. Jeanne Dodd & Mr. Robert Streadwick
 Sharon Peterson-Dort
 Mr. Robert F. Dueweke
 Mr. Ryan M. Eashoo
 Mr. John Ellenwood
 Mrs. Loretta C. Ellwood
 Mr. Michael Farrell & Mr. Marc Herrick
 Ms. Nora G. Fisher
 Mr. & Mrs. Ed Fizell
 Patricia Ford
 Mr. Richard W. Fortner
 Dr. Gail Ganakas
 Mr. John R. Gazzall
 Ms. Patricia Gebhardt
 Mr. Thomas M. Gervasi
 Donna Mooney Graham
 Mrs. Bobbie J. Greer
 Ms. Anne Hagiwara
 Mr. Tony Hain
 Dennis & June Haley
 Mr. & Mrs. Gerald Hall

Ms. Lynn A. Hampton
 Mr. & Mrs. Anthony A. Hanak
 Mr. & Mrs. Joel H. Harris
 Mrs. James Hastings
 Mr. John Hemingway & Mrs. Connie Palmer
 Mr. & Mrs. Jack Hempel
 Ms. Annetta Hendrickson
 Mr. & Mrs. Edward G. Henneke
 Mr. Larry D. Howell
 Mr. & Mrs. Francis Hudson
 Mr. Roger Hunyady & Mrs. Jan Brunette-Hunyady
 Ms. Lynne Hurand
 Dr. Susumu Inoue
 Mr. & Mrs. Andrew Isola
 Mr. Robert Jacobs
 Mr. & Mrs. James N. Johnson
 Ms. Elizabeth A. Kaplan & Mr. Rex Donahey
 Mr. James R. Kettler
 Mr. & Mrs. Jimmy King
 Mr. & Mrs. Norman Kleiner
 Mr. Joseph J. Kochanek
 Mr. & Ms. Stephen Larzelere-Kellermann
 Mr. & Mrs. James Lay
 Mrs. Linda LeMieux
 Mr. & Mrs. Thomas B. Lillie
 Mr. & Mrs. Mark L. Lippincott
 Mr. Alvern Lock & Mrs. Theresa Stephens-Lock
 Mr. & Mrs. Glenn Lysinger
 Ms. Jeanette R. Mansour & Mr. Joe Green
 Mr. & Mrs. Brian Martin
 Ms. Carol Masse
 Mr. & Mrs. Daniel Maynard
 Jack & Pam McCarthy
 Mr. Charles Miller & Dr. Townes Miller
 Ms. Kareyna Miller
 Mrs. Helen G. Millhouse
 Mr. & Mrs. Robert D. Mills
 Mrs. Patricia Minshall
 Ms. Barbara Mirsky
 Mr. Thomas J. Mitchell
 Ms. Marlene Morris
 Dr. & Mrs. Kienan F. Murphy
 Mr. & Mrs. Alexander C. Murray
 Mr. James Naddeo
 Mr. & Mrs. Walter Nagel
 Ms. Sharon Y. Naughton
 Mr. H. Michael Parker
 Mrs. Betty J. Pearson
 Ms. Lynn Penning
 Mr. & Mrs. Randall Petrides
 Ms. Jacqueline Piechowksi
 David & Randee Pieper
 Mrs. Janice G. Pike
 Mrs. Karan A. Pinkston
 Dr. & Mrs. Mark Plucer
 Ms. Mary Powell
 Mrs. Fouad Rabiah

Betty & Richard Ramsdell
 RE/MAX Edge
 Mr. & Mrs. A. Davison Rice
 Jane & James Richardson
 Mr. John L. Riegle, Jr.
 Mr. & Mrs. Michael J. Riha
 Ms. Edith A. Robbins
 Mr. & Mrs. Andrew Roeser
 Dr. & Mrs. Paul Roetter
 Ms. Christine Rohr
 Mr. & Mrs. Paul Rozycki
 Dr. & Mrs. Daniel J. Ryan
 Ms. Kathleen Ryan
 Mr. & Mrs. Khalil M. Saab
 Mr. & Mrs. Greg Schnesk
 Dr. & Mrs. Frederick C. Schreiber
 Dr. & Mrs. Paul E. Schroeder
 Mr. & Mrs. Howard S. Schultz
 Mrs. Marsha Schweikert
 Mr. & Mrs. William A. Shaheen, Jr.
 Chuck & Kathryn Sharbaugh
 Bruce M. Simms
 Mr. & Mrs. George Skaff
 Dr. Ernestine R. Smith
 Ms. Linda Smith
 Mr. & Mrs. James Spangler
 Shelley Spivack
 Miss Barbara Stewart
 Mr. & Mrs. Norm Stewart
 Ms. Suzanne Sugden
 Dr. & Mrs. Thomas Svitkovich
 Mr. & Mrs. Douglas C. Swanson
 Ms. Ernelle Taylor
 Mrs. Michel Taylor
 Ms. Christine Thomas
 Ms. Karolyn Tiefenbach
 Mr. & Mrs. Roger Timm
 Ms. Jane B. Trotter
 Ms. Ann Marie VanDuyne
 Dr. & Mrs. Frederick VanDuyne
 Mrs. Judith A. Walker
 Mr. & Mrs. Gerald L. Walters
 Ms. Christine Waters & Mr. Martin Anderson
 Dr. & Mrs. Alan Weamer
 Mr. & Mrs. Richard C. Weiermiller
 Dr. & Mrs. Jay A. Werschky
 Ms. Mary E. Whaley & Mr. Rick Kroeger
 Dr. Sue Wisenberg
 Mr. Dale F. Wolfram
 Ms. Heather Wright
 Ms. Janice Yaklin
 Mr. & Mrs. Dean Yeotis
 Judge & Mrs. Thomas C. Yeotis

Annual Appeal Matching Gift

Charles Stewart Mott Foundation

Art School

BorgWarner Foundation

Clay Club - FIA
 Employees at Consumers Energy
 Mr. & Mrs. Robert L. Daly
 Mr. & Mrs. Jim Farber
 Dr. Gail Ganakas Fund of the Community Foundation of Greater Flint
 The Isabel Foundation
 Stella & Frederick Loeb Charitable Trust
 Neiman Marcus
 Ms. Shirley Reeve
 Dr. Randle Samuels & Ms. Gail Offen
 Mr. & Mrs. Jim Wascha
 James A. Welch Foundation

Collections

The Chan Family
 Dort Federal Credit Union
 Michigan Council for Arts & Cultural Affairs
 Mrs. Stephanie A. Neal
 Mr. Randolph P. Piper & Mrs. Susan I. Stuewer
 Jeremy and Amy Piper Fund of the Community Foundation of Greater Flint
 Bequest of Grayce Scholt

The Contemporaries Members

Mrs. Yaushica Aubert
 Mr. & Mrs. Terrell Aubert
 Bill & Tess Barker
 Mr. & Mrs. Berton Brown
 Mr. & Mrs. Jeffrey Dompfeh
 Mr. & Mrs. Nick Godlesky
 Mr. Levellyn Hunter
 Ms. Charis Lee
 Mr. Peter McFray
 Ms. Jackie Poplar
 Ms. Toyonna Robbins
 Miss Jenette Schanick
 Ms. Elizabeth Seveck
 Ms. Erica Thrash-Sall
 Ms. Brittney Wallace
 Mr. & Ms. Andrew Watchorn
 Mr. & Mrs. Aaron Wiens
 Mr. Stephen Zulinski

The Contemporaries Sponsors

Caudill Thornquist Group

Expansion Project Endowment & Equipment Funds Contributors

Adult Learning Institute, in honor of Kathryn Sharbaugh
 Anonymous
 Ms. Sandra Applegate, In appreciation of the tour given by Kathryn Sharbaugh
 Jane Bingham
 Mr. Christopher Carr
 The Chan Family
 Charles Stewart Harding Foundation, in honor of Claire M. White
 Ms. Judith B. Chauvin, in memory of Marianne Chardoul Mair
 Ms. Nora G. Fisher
 Dr. & Mrs. Robert Florine
 Frederick Fisher & Partners Architects
 Mr. & Mrs. Daniel S. Harrett
 Mr. & Mrs. Richard S. Harris
 David & Donna Hart
 Mr. & Mrs. John B. Henry, in memory of Estelle Burgett
 Hoffman's Deco Deli & Café, Sandwich of the Month Promotion
 Ms. Ethel Hooker
 Mr. & Mrs. Horace Hull, in memory of Estelle Burgett
 Mr. & Mrs. Gary J. Hurand
 Mrs. Agape Kallis
 Mr. & Mrs. Franklin H. Kastle
 Mr. & Mrs. Paul Kelley, in memory of Estelle Burgett
 Mr. & Mrs. Raymond J. Kelly III, in memory of Robert Piper
 Dr. Jamile Trueba Lawand
 Ms. Kerstin Lawrence
 Mr. Max Lepler & Mr. Rex L. Dotson, in celebration of the FIA's 90th Birthday and in anticipation of the 100th
 Tiffany Lovett, In honor of William S. White
 Mrs. Stephanie A. Neal, In memory of Jack Neal
 Jay & Marilyn Nelson of the Nelson Family Foundation
 Mr. H. Michael Parker, in Celebration of Patricia A. Parker
 Ms. Patricia Parker, in Celebration of H. Michael Parker
 Donor advised grant from William H. Piper - Flint Community Fund of the Community Foundation of Greater Flint, in memory of James H. Applegate
 Ms. Edith Resnick, for a wonderful gallery tour
 Estate of Grayce Scholt
 Chuck & Kathryn Sharbaugh
 Sahar Abdallah, Sorensen Gross Co.

Mrs. Susan K. Sovel
 Mrs. Mary Sugarman, for a wonderful gallery tour
 Mr. & Mrs. Morry Weiss, thank you to Kathryn Sharbaugh for giving a tour
 Dr. & Mrs. Jay A. Werschky
 Mr. William S. White
 Whiting Foundation
 Ms. Marilyn Willingham

Education

Mr. James R. Chintyan
 Stella & Frederick Loeb Charitable Trust
 Martha Merkle Charitable Trust for Elderly
 The Sheppy Dog Fund Lecture
 Socially Yours Design

Event Sponsors

AAA Michigan - Renee Sanders
 Ace-Saginaw Paving Co.
 Maria Gonzalez & Glen Adams
 Mr. & Mrs. Leon & Pat Adams
 Advanced Physical Therapy Center
 Al Serra Cadillac
 All-Weather Seal
 Henry & Mary Allen
 Alpha Kappa Alpha Zeta Beta Omega
 American Machining, Inc.
 Ameriprise Financial Services, Inc.
 Applegate Chevrolet
 Ascension
 ATI Group
 Baker College
 Kay & Michael Behm
 Bennett Telephone Answering Service
 Big Top Tattoo/Signature Tattoo
 Bodman PLC
 James & Kathy Boles
 Mrs. Edmund B. Brownell
 C & S Motors
 Floyd & Brenda Clack
 Cline, Cline & Griffin PC
 Communities First, Inc.
 Community Foundation of Greater Flint
 Consumers Energy
 Cooper Commercial Group
 Mr. & Mrs. Sam Cox
 Cracker Barrel
 Dee Cramer Inc.
 Delta Sigma Theta Sorority, Inc.
 ELGA Credit Union
 Flint & Genesee Chamber of Commerce
 The Flint Area (MI) Chapter of The Links Incorporated
 Mike Foskett Plumbing

Founders Society
 John & Cathy Fredericks
 The Friends of Berston Field House
 FUNchitecture, LLC
 Edward Jones - Eric Gasper
 Gasser Bush Associates
 The Genesee Group
 Drew & Cathy Gentry
 Raymond F. Gist, D.D.S.
 Grace Emmanuel Baptist Church
 The Greater Flint Chapter of the Pierians, Inc
 Greater Flint Imaging
 Bobbie J. Greer
 Hamilton Community Health Network
 The Hamo Group of Wells Fargo Advisors
 Hank Graff Chevrolet Davison HAP
 Louis Hawkins
 Dr. & Mrs. John Hebert
 William Hentgen
 Hurand Family
 Gary & Carol Hurand
 Lynne Hurand
 Hurley Medical Center
 Hurley Foundation
 Jennifer Lasco Real Estate
 Timothy & Melinda Johnson
 Mr. & Mrs. Tyrone Jordan
 Karlene and Gaffney Dermatology
 The Karwaski Group at Morgan Stanley
 Ms. Gidget Keefer
 Kettering University
 Dr. Samasandrapalya Kiran & Dr. Mona Hardas
 Drs. Prasad & Jayashree Kommareddi
 Chene Koppitz
 Jamile T. Lawand
 Leo's Coney Island
 Lewis & Knopf, CPAs
 Mark & Charlotte Lippincott
 Mass Transportation Authority
 Olivia Maynard & Olof Karlstrom
 Sean & Eureka McCormick
 Mr. & Mrs. Todd McCreddie
 Mr. & Mrs. John McKenney
 McLaren Flint
 Merrill Lynch
 Miller Road Applebee's
 Mr. Mark & Becky Miller
 Thomas J. Mitchell
 Bill & Kitty Moeller
 Roland & Cynthia Morsee
 Mott Community College
 Drs. Bobby & Nita Mukkamala
 Dr. & Mrs. Kienan F. Murphy
 Olmsted Associates, Inc.
 Dr. Tolupto Oyasiji
 Suellen J. Parker P.C.

Rebecca Pettengill
 Eric S. Peterson & Associates
 Mortgage Lenders, LLC
 Piper Realty Co.
 Plante Moran
 PNC Bank
 Prestige Promotions Powered by Proforma
 Victor & Inga Rabinkov
 Archaea Rajan, D.D.S. & Symantec Ram
 Drs. Venkat & Rama Rao
 Dr. & Mrs. Lawrence Reynolds
 Mr. & Mrs. Dwight & Lisa Rogers
 Mr. Milton & Dr. Brenda Rogers-Grays
 ROWE Professional Services, Co.
 Roy, Noye & Warren, CPA, P.C.
 Michael & Virginia Rucks
 The Rutherford Group
 Daniel J. & Mary C. Ryan
 Ann & Khalil Saab
 Mr. & Mrs. Timothy C. Sanford
 The Serra Foundation (Al Serra Auto Plaza)
 Servpro of Fenton & NW Genesee County
 Shaltz Automation
 Chuck & Kathryn Sharbaugh
 Dr. Robert & Mayor Susan Soderstrom
 Leo & Elizabeth Solano
 Sorensen Gross Co.
 Jim & Patt Spangler
 Shelley Spivack & Linda Pylypiw
 Woodrow Stanley
 Alvern & Theresa A. Stephens-Lock
 Ernelle Taylor
 Tito's Handmade Vodka
 The Torch
 Totem Book Store
 Town Center Family Dental
 Tom & DeAnn Townsend
 Mr. Terry Turner
 Patrick & Gloria Tyus
 University of Michigan - Flint
 Valley Area Agency on Aging
 Dr. Wrex & Karen Weaver
 The John Wentworth Group
 Werschky & Lewis Family Dentistry
 Dr. & Mrs. Jay Werschky
 The Williams Firm
 Todd & Lisa Wiseley
 WJRT ABC 12
 Xcelerated IT Strategies, Inc.
 Yeo & Yeo CPAs & Business Consultants

Exhibition Sponsors

Flint Public Library
 Security Credit Union
 Susie's Hope

Flint Print Club

Mr. & Mrs. Gordon Andrews
 Valarie & Steven Bailie
 Mr. & Mrs. Michael J. Behm
 Mr. & Mrs. Ryan & Tracy Bessert
 Mr. & Mrs. James Boles
 Mr. & Mrs. Bryan Christie
 Dr. James Cohen & Ms. Caroline Kellogg
 Mr. Joseph Coriaty
 Mr. & Mrs. F. James Cummins
 Mr. Dallas Dort & Mrs. Sharon A. Peterson Dort
 Mr. Greg Edquist
 Mr. & Mrs. Mark Farella
 Mr. Michael Farrell & Mr. Marc Herrick
 Mr. & Mrs. Jeff Garrett
 Mr. & Ms. Jonathan Glab
 Ms. Ronda W. Goldfarb
 Mr. & Mrs. Walter Griffin
 Mr. Mark Hamel & Mr. Mike Green
 Samuel & Graciela Harris
 Mr. Louis A. Hawkins
 Neal & Amanda Hegarty
 Ms. Ann Howard
 Mr. & Mrs. Gary J. Hurand
 Mr. & Mrs. Josh Hurand
 Ms. Lynne Hurand
 Ms. Sara Hurand & Mr. Elie Weiss
 Mr. & Mrs. James N. Johnson
 Ms. Elizabeth A. Kaplan & Mr. Rex Donahey
 Mr. & Mrs. Christopher S. Kelly, Sr.
 Mr. Matthew Knuth
 Mr. Miles Lam
 Dr. Jamile T. Lawand & Mr. Barry J. Carr
 Mr. Max Lepler & Mr. Rex L. Dotson
 Tiffany Lovett
 Mr. Michael Martin & Mr. Bryan Paris
 Sean & Eureka McCormick
 Mr. & Mrs. David S. McCredie
 Mr. Thomas J. Mitchell
 James R. & Helen Sue Morgan
 Ms. Lori Motley
 Drs. Bobby & Nita Mukkamala
 Dr. & Mrs. Kieran F. Murphy
 Mr. Patrick Murray & Mr. James Edwards
 Mr. & Mrs. Robert W. Myers
 Mr. & Mrs. Edward A. Ogul
 Mr. & Mrs. Peter Ott
 Mr. H. Michael Parker
 Mr. & Mrs. Gary Philipott
 Mr. Wayne Pickvet & Mr. Bruce A. Barrett
 Mr. & Mrs. Mark Piper
 Dr. & Mrs. Mark Plucer
 Mr. & Mrs. Adam Reigle
 Drs. Michael & Virginia Rucks
 Mr. & Mrs. Timothy C. Sanford

Mr. & Mrs. John P. Siler
 Mr. Michael Sprague & Dr. Janet Sprague
 Mr. & Mrs. Norm Stewart
 Chris & Holly Tait
 Dr. David Taylor
 Ms. Kathleen A. Weiss & Dr. Scott A. Graves M.D
 Mr. & Mrs. Ridgway H. White
 Mr. William S. White & Mrs. Louise Hartwell
 Ms. Mary Whitlock
 Mr. & Mrs. Vincent Zamora
 Mr. Mike D. Smith & Ms. Trish M. Zito-Smith

Gift of Flint Print Club

Mr. & Mrs. Gary J. Hurand for Josh & Ashley Hurand
 Mr. & Mrs. Gary J. Hurand for Sara Hurand & Elie Weiss
 Chene Koppitz for Chris & Holly Tait
 Mr. William S. White for Tiffany Lovett
 Mr. William S. White for Ridgway & Shannon White

Film Society Sponsors

Mrs. Edmund Brownell
 Chapin & Gail Cook
 Guardian Security Services, Inc.
 Mr. & Mrs. John B. Henry
 Prosecutor David & Therese Leyton
 Merrill Lynch
 Michigan Public Radio
 Dr. & Mrs. Kieran F. Murphy
 Dr. & Mrs. Mark Plucer
 Ms. Linda L. Pylypiw
 Dr. James Scott & Ms. Diane Piontkowski

Film Society Members

Mr. & Mrs. David G. Babieracki
 Mr. & Mrs. Richard Beauchamp
 Jane Bingham
 Mr. & Mrs. Ted Bolander
 Susan Steiner Bolhouse & William S. Ballenger III
 Mr. & Mrs. Edwin Bradley
 Robert & Cindy Buckel
 Sean Siebigteroth
 Mr. & Mrs. Tom E. Butts
 Ms. Kay E.M. Cherry
 Mr. Albert Comins
 Mr. & Mrs. Allan Coon
 Samuel & Darylee Coplin
 Mr. & Mrs. Harry Cybulski
 Carol Egloff
 Ms. Patricia Emenyonu
 Ms. Nora G. Fisher

Dr. & Mrs. Melvin Flamenbaum
 Mr. Richard W. Fortner
 Dr. Brenda Fortunate & Mr. Edward White
 Ms. Virginia Gaffney
 Ms. Kathleen George
 Mr. & Mrs. Roger Gilmour
 Helen Bas & Tom Glasscock
 Mr. & Mrs. Bill Glowney
 Mr. Mark Gragg
 Mr. & Mrs. Eugene B. Griffel
 Mr. John Hemingway & Mrs. Connie Palmer
 Mr. & Mrs. Ed Hendriksen
 Mrs. Ernie Hermann
 Mr. John Hubbard
 Ms. Lynne Hurand
 Mr. & Mrs. Franklin H. Kastle
 Michael & Virginia Knag
 Lee J. LaVictoire & Robin P. LaVictoire
 Ms. Diane Lien
 Mr. & Mrs. Richard Lutgens
 Richard & Claudia Mach
 Ms. Carol Masse
 Marilyn Mazanec & Gregory Jensenworth
 Sean & Eureka McCormick
 Mr. William K. McDonald
 Mr. & Mrs. Ed Meier
 Mr. Herb Merrell
 Mr. Shai M. Brosh & Ms. Christine Mieloch
 Dr. Peter C. Moody
 Ms. Christy Moore
 Mr. & Mrs. Don Morris
 Mr. Michael Orr & Ms. Darla Orr
 Ms. Suzanne Owen
 Ms. Alta Parsons
 Mr. & Mrs. Kevin Payne
 Ms. Orlene Peresta
 Ms. Yolanda Pierce & Ms. Delores Johnson
 Ms. Sally Pierson
 Mr. & Mrs. Edward H. Powers
 Ms. Nella Root
 Drs. Michael & Virginia Rucks
 Ms. Carla Russell & Ms. Susan Mangapora
 Mr. & Mrs. Roy Sabo
 Mrs. Judy Sanford
 Ms. Sarah Scheitler
 Ms. Janet A. Schultz
 Ms. Marsha V. Schwarz
 Mr. & Mrs. Bob Shaw
 Ms. Joan W. Smalley
 Ms. Sandra Smith
 Ms. Shelley R. Spivack & Mr. Justin Scanlon
 Mrs. Sally Salay Stevens
 Mr. Michael Dingman & Mrs. Susan Sumner Dingman
 Ms. Elizabeth Svoboda
 Ms. Carolyn Szaroletta

Ms. Donna Ullrich
 Dr. & Mrs. L. VanWinkle, Jr.
 Mr. Mark A. Walters
 Dr. & Mrs. Stuart B. Weiner
 Mrs. Randa Welker
 Mr. & Mrs. David Wharton
 Ms. Marilyn Willingham
 Ms. Janette A. Wilson
 Mr. & Mrs. Mike Wilson
 Mr. & Mrs. Dean Yeotis

General Contributions

Kimberly Brown & Gary DeButts
 Huntington Bank
 Ms. Lynne Hurand
 Ms. Connie Lawson
 McLaren Health Care
 Mrs. Robert C. Morgan
 Neithercut Family Fund
 Donor advised grant from William H. Piper - Flint Community Fund of the Community Foundation of Greater Flint
 Mrs. Norma Struck

Gift of an FIA Membership

Mr. Glen Adams for Maria Gonzalez
 Mr. Fenton A. Addington for Ben & Wendy Atkins
 Mr. Fenton A. Addington for David Odom
 Mr. Fenton A. Addington for Michele Addington
 Ms. Bethany Burkman for Michael Borror
 Ms. Martha Calhoun for John P. Carter
 Mr. Matt Carmichael for Alan Davis & Ms. Elizabeth Carmichael-Davis
 Angelica Chambers for Sara Gribowskas
 Ms. Patricia J. Cleland for Sandy Malnar
 Mrs. Rosemary Emerton for Ava Dudley
 Mrs. Rosemary Emerton for Olivia Dudley
 Miss Becki Flanagan for Jeffrey Ferweda
 Ms. Patricia Gage for Bob Clayton
 Ms. Kathleen George for Kathleen Moore
 Ms. Stephanie Hartfield for Linda Mason
 Mr. Louis A. Hawkins for Jacob & Remonia Hawkins
 Mr. & Mrs. Tomek Hempel-Stadnik for Jack & Katherine Hempel

Ms. Shayna Hosler & Mr. James Mason for Michael Hosler
 Ms. Caroline Hughes for John & Lorraine Hughes
 Mr. & Mrs. Gary J. Hurand for Josh & Ashley Hurand
 Mr. & Mrs. Gary J. Hurand for Sara Hurand & Elie Weiss
 Ms. Lynn Kalcic for Christine Kalcic & Matt Kincius
 Mr. Connor Kelly for Virginia Gaffney
 Ms. Chene Koppitz for Chris & Holly Tait
 Ms. Chene Koppitz for Matthew & Rebecca Widdick
 Ms. Chene Koppitz for Mr. & Mrs. Tim Jacques
 Ms. Kerstin Lawrence for Martha Calhoun
 Dr. Euretta McAllister for Bobbie McAllister
 Mr. David Merot & Ms. Milo Mott for Seylor Switzer
 Mr. & Mrs. William H. Moeller for Kristie Lisek
 Ms. Kathleen Moore for Teresa Porteous
 Mr. H. Michael Parker for Elizabeth Parker
 Your Team- Personal/Accounting
 Girls for Jeffery Searles
 Ms. Marissa Pierce for Marilyn Twine
 Mrs. Fouad Rabiah for Victoria Ybarra
 Mr. Michael Sprague & Dr. Janet Sprague for Mary Sprague
 Mrs. Christine Stephens for Gabrielle Stephens
 Mr. & Mrs. Carl D. Terwilliger for David LeVites & Gail Webster
 Mr. William S. White for Tiffany Lovett

Grants & Trusts

Art Alliance for Contemporary Glass
 Arthur G. Bishop Charitable Trust
 Bank of America
 Charles Stewart Mott Foundation
 Community Foundation of Greater Flint
 Dr. Gail Ganakas Fund of the Community Foundation of Greater Flint
 Dr. Robert Horn
 The Isabel Foundation
 Kommareddi Family Fund
 Stella & Frederick Loeb Charitable Trust
 Martha Merkley Charitable Trust for Elderly

Nartel Family Foundation
 Jeremy and Amy Piper Fund of the Community Foundation of Greater Flint
 PNC Foundation
 The Shand Family
 The Sheppy Dog Fund - Dr. Alan Klein, Advisor
 Susie's Hope
 Viola E. Bray Charitable Trust
 James A. Welch Foundation

In-kind Gifts

Flint Glass Service, LLC

Tributes & Memorials

In memory of James H. Applegate
 Mr. & Mrs. John B. Henry
 Mr. Wayne W. Knecht
 Donor advised grant from William H. Piper - Flint Community Fund of the Community Foundation of Greater Flint
In memory of Estelle Burgett
 Mr. & Mrs. John B. Henry
 Mr. & Mrs. Horace Hull
 Mr. & Mrs. Paul Kelley
 Weinstein Electric Co.
In memory of Kathleen "Kathy" Hain
 Mr. & Mrs. Robert L. Bessert
 Ms. Patty Ehrnstrom Burdon
 Cynthia & James Cirar
 Letty & Ike Evans
 Lois Matesa
 David & Connie McCredie
 Dr. & Mrs. Peter K. McLeod
 Dr. & Mrs. Conrad J. Reinhard
 David & Linda Roeser
 Byron & Bobbi Schoolfield
 Ms. Victoria A. Steele
 Suzanne Turpen

In memory of Robert Hardy
 Kim Brown
 Harold & Marie Ecker
 Tim & Linda Knecht
 Mr. Wayne W. Knecht
 Mrs. Christine Lott
 Bob & Mary VanDuynes
In memory of Basil Hart, husband of Maggie Hart, Founders Society Board Member
 Mr. & Mrs. Chris J. Dundas

In memory of Judy Irwin
 Mr. & Mrs. Chris J. Dundas
 Founders Society to support Art School Scholarships

In memory of Susan Kilmer to support Endowment
 Jane Bingham

In memory of Ruth Leder
 Jane Bingham
 Mr. & Mrs. John B. Henry
 Chuck & Kathryn Sharbaugh

In memory of Marianne Chardoul Mair
 Mrs. Edmund Brownell
 Ms. Judith B. Chauvin
 Susanne Chardoul Johnson
 Mr. John L. Rieggle, Jr.
 Mr. & Mrs. Timothy C. Sanford
 Dr. & Mrs. Byron Schoolfield

In memory of Robert Piper
 Mr. & Mrs. Raymond J. Kelly III
 Mr. Randolph P. Piper & Mrs. Susan I. Stuewer

In memory of Dr. Russell Sandberg
 Mr. & Mrs. John B. Henry
 Chuck & Kathryn Sharbaugh

In memory of Grayce Scholt
 Jane Bingham
 Mark, Ilsa & Peter Bradley, and Anne Hansen
 Chuck & Kathryn Sharbaugh

In memory of Trudi Schreiber
 Mr. & Mrs. John B. Henry
 Kathryn Sharbaugh

In memory of Beverly Shomsky
 Albert & Barbara Koegel
In memory of Dr. Morton Stanley
 Mr. & Mrs. John B. Henry

In memory of Linda Mishall Vanston
 Mr. Richard H. Ebbott
 Ms. Carol R. Jankowski

In memory of Cheryl Wason
 Mr. & Mrs. Richard Fortier

In memory of Barbara White
 Ms. Marilyn Willingham

In memory of Donald Williamson
 Mr. & Mrs. John B. Henry

In memory of Benjamin Wright, Jr.
 Chuck & Kathryn Sharbaugh

In honor of Fred & Barbara Bellairs
 Mr. Jeffrey Bellairs

In honor of Tom Cheek's Retirement
 Jane Bingham

In honor of Rosemary DeCamp
 Sam, Alison, Anna, & Jimmie DeCamp

In celebration of the FIA's 90th birthday and in anticipation of the 100th
 Mr. Max Lepler & Mr. Rex Dotson

In honor of Alan Ginsburg for his "real special" birthday
 Mr. & Mrs. Gary J. Hurand

In honor of Richard & Ilene Harris' 40th anniversary
 Mr. & Mrs. Joel H. Harris

In honor of the retirement of William Moeller
 Mr. & Mrs. Gary J. Hurand

In celebration of H. Michael Parker
 Ms. Patricia A. Parker

In celebration of Patricia A. Parker
 Mr. H. Michael Parker

In honor of Howard S. Shand's birthday and his support of the Flint Institute of Arts and Flint, MI
 Mr. & Mrs. George Gulliver & Family

In honor of Kathryn Sharbaugh & Tracee Glab for giving a tour U of M Club Flint

In honor of Claire M. White
 Charles Stewart Harding Foundation

In honor of William S. White to support Expansion Project - Endowment Fund
 Tiffany Lovett

Membership

* denotes increased gift level

+ denotes Friends of Modern Art (FOMA) membership

Δ denotes Founders Society membership

Rubens Society (\$1,000 annually)

Business

Abbott's Meat Inc.
American Machining, Inc.
Big John Steak & Onion, Inc.
Fabiano Brothers, Inc.
Main Manufacturing Products
Merrill Lynch
The Sheppy Dog Fund
Sorensen Gross Construction Co.
Jason S. Wheatley, LLC*

Individual

Ms. Sandra Applegate+Δ
Mr. Carroll G. Baker & Ms. Kimberly Roberson+Δ
Mr. & Mrs. Richard P. BaksΔ
Mr. & Mrs. Michael J. Behm*+
Frederick & Barbara Bellairs
Mrs. Beverly Bernard
Mr. & Mrs. Robert L. Bessert+Δ
Falding Bishop+Δ
Mr. & Mrs. James Boles
Ms. Susan Steiner Bolhouse & Mr. William S. Ballenger III
Mr. Alfred D. Bosley & Mrs. Betty Woodward-Bosley*
Mrs. Edmund Brownell+Δ
Mr. & Mrs. Howard J. BuecheΔ
Dr. Stephen R. Burton+Δ
Dr. & Mrs. Alexander Chan+Δ
Mr. & Mrs. Chapin Cook
Maureen & George Corser+Δ
Mr. & Mrs. F. James Cummins
Ms. Susan Davies & Mr. Tim Broderick*
Mrs. Elizabeth Dean+Δ
Mr. Dallas Dort & Mrs. Sharon A. Peterson Dort
Mr. & Mrs. James D. Draper*+Δ
Mr. & Mrs. Robert Eastman
Mr. & Mrs. Harry L. Eiferle III+Δ
Mr. & Mrs. Michael A. Farella+
Mr. Michael Farrell & Mr. Marc Herrick+Δ
Dr. & Mrs. Melvin Flamenbaum+Δ

Dr. Brenda Fortunate & Mr. Edward White+Δ
Mr. & Mrs. Robert S. Fuller
Hank & Bonnie Graff+Δ
Donna Mooney Graham
Mr. & Mrs. Neal Hegarty
Mr. William J. HentgenΔ
Mr. & Mrs. Timothy Herman
Mr. & Mrs. Joseph Higgins
Mr. & Mrs. Richard C. Hockstad
Mr. & Mrs. Gary J. Hurand+Δ
Ms. Lynne Hurand+Δ
Mrs. Judith Jacobson
Mr. & Mrs. James N. Johnson
Michael & Kay Kelly
Mr. & Mrs. Raymond J. Kelly III
Mrs. Harriet B. Kenworthy
Mr. & Mrs. Timothy H. Knecht
Dr. & Mrs. Prasad Kommareddi+Δ
Mr. Wayne W. Knecht+Δ
Albert & Barbara Koegel
Ms. Kathryn Koegel+
Mr. James R. Kettler
Dr. Samasandrapalya Kiran & Dr. Mona Hardas
Mr. & Mrs. Madhu Kulkarni
Ms. Tamara Kurtz
Mr. & Mrs. Stephen S. Landaal
Dr. Jamile T. Lawand & Mr. Barry J. Carr+Δ
Mrs. Linda LeMieux
Mr. Max Lepler & Mr. Rex L. Dotson+
Prosecutor David & Therese Leyton
Mr. & Mrs. John Lindholm
Mr. & Mrs. Mark L. Lippincott
Ms. Judith E. Mabry
Ms. Jeanette R. Mansour & Mr. Joe Green
Sean & Eureka McCormick+Δ
Mr. & Mrs. David S. McCreddie
Dr. & Mrs. Robert McMahan
Mr. & Mrs. William H. Moeller
Mrs. Robert C. Morgan
Drs. Bobby & Nita Mukkamala+Δ
Dr. & Mrs. Kienan F. Murphy+Δ
Mr. Patrick Murray & Mr. James Edwards+Δ
Edward & Elizabeth Neithercut
Mr. & Mrs. Jay Nelson
Mr. & Mrs. Brian M. Nolan
Mr. H. Michael Parker+Δ
Mr. & Mrs. Raymond J. Persia+Δ
Mr. Randolph P. Piper & Mrs. Susan I. Stuewer+
Mr. William H. Piper
Dr. & Mrs. Mark Plucer+Δ
Ms. Linda L. Pylpiw+
Mrs. Fouad Rabiah
Mr. & Mrs. Michael J. Riha+Δ
Mr. & Mrs. Jeffrey D. Rocco
Drs. Michael & Virginia Rucks+Δ
Dr. & Mrs. Daniel J. Ryan+Δ

Mr. & Mrs. Khalil M. Saab+Δ
Mrs. Betty Salimi+Δ
Mr. & Mrs. Timothy C. Sanford+Δ
Dr. & Mrs. Paul E. Schroeder+Δ
Chuck & Kathryn Sharbaugh
Mr. & Mrs. John P. Siler+Δ
Mr. & Mrs. James Spangler
Ms. Susan E. Thompson+Δ
Dr. D.J. Trela & Dr. David Bailey+
Dr. & Mrs. Frederick VanDuyne
Mr. & Mrs. David B. Walters
Miss Beverly Weidendorf
Dr. & Mrs. Stephen Wang
Dr. & Mrs. Jay A. Werschky+Δ
Mr. & Mrs. Ridgway H. White
Mr. William S. White & Mrs. Louise Hartwell+Δ
Mr. & Mrs. Jerome D. Winegarden, Jr.
Mr. & Mrs. Douglas Wyrwicki
Mr. & Mrs. Dean Yeotis+Δ

Business Members

Business Supporter (\$250 annually)

John K. Costa, AIA Architectural Design & Consultation PLLC
League of Interesting Women+Δ
Luis A. Perez DDS MS PC
Piper Realty Co.
RE/MAX EDGE+Δ
Skaff Carpet & Furniture Co.
Woodhaven Senior Community

Business Sustainer (\$100 annually)

3Sixty Interactive
Ace-Saginaw Paving Co.
Ameriprise Financial Services, Inc
Baker College Center for Graduate Studies
Bishop International Airport Authority
Boyd Investment Services+Δ
C & S Motors, Inc.
Caudiill Thornquist Group
Christie's - Chicago
Christie's - New York
Clarkston Cultural Arts Council
Consumers Energy
Cracker Barrel Old Country Store, Inc.
ELGA Credit Union
FCC Academy
Flint Cultural Center Foundation
Flint Glass Service, LLC
Genesys Ascension
Hamilton Community Health Network
The Hamo Group
HAP
The Huntington National Bank
Lewis & Knopf, CPAs, P.C.

McFarlan Home
Midland Center for the Arts
Mott Community College
Atty. Matthew L. Norwood
PNC Bank
PNC Institutional Investments
PNC Foundation
The Serra Foundation
Vogt's Flowers
VP Total Solutions
Jason S. Wheatley, LLC
Yeo & Yeo, P.C., CPA

Individual Members

Donor

(\$500 annually)

Mr. & Mrs. David F. Barbour+
Mr. & Mrs. Stephen Bernstein+
Mrs. Deborah Bourke
Mr. John Ellenwood
Hon. Judith A. Fullerton & Mr. Ward Chapman+Δ
Ingrid G. Halling & Robert Thomas+
Mr. Mark Hamel & Mr. Mike Green*

Byron & Margie Latter+
Dr. & Mrs. Paul Lauber
Mr. & Mrs. William Peterson
Mr. & Mrs. David Roeser+Δ
Mr. & Mrs. Paul Runyan
Mr. & Mrs. J. Parkhill Smith+
Mr. & Mrs. David E. Wood+Δ

Sponsor

(\$250 annually)

Mr. & Mrs. Robert A. Ackerman+Δ
Dr. & Mrs. William M. Bernard+
Dr. Cathy O. Blight & Mr. Edward B. Davison+Δ
Dr. & Mrs. Donald Brockriede*+Δ
Mrs. Judy Clark*+
Mr. & Mrs. James DelDuca*
Ms. Jeanne Dodd & Mr. Robert Streadwick
Mr. Thomas Edelen+Δ
Mr. & Mrs. Harry L. Eiferle, Jr.
Dr. & Mrs. Cyrus Farrehi
Mr. & Mrs. John Fey
Mr. & Mrs. Joseph F. Foos+Δ
Mr. & Mrs. Randolph Forester
Ms. Patricia Gage & Mr. William McKay*+Δ
Dr. Gail Ganakas
Mr. Earl E. Gravlin & Ms. Julia Sullivan+Δ
Mr. & Mrs. Daniel S. Harrett
Miss Grace Hogan
Mr. Derrick F. Jones*+
Mrs. Agape Kallis
Mr. & Mrs. John H. Lang+Δ
Mr. & Mrs. James LayΔ
Mr. Frank Leimbek & Ms. Marjorie Teal+Δ

Mr. & Mrs. William LivengoodΔ
Mr. Robert J. MacDonald
Ms. Maureen MacVay+
Mr. & Mrs. Robert W. Misekow+Δ
Mr. Thomas J. Mitchell+Δ
Dr. Peter C. Moody+
Mr. Mark E. Neithercut
Dr. Dong Wha Ohm
Mrs. Joanne M. Piper
Mr. Gary Reetz & Mrs. Barb Stone Reetz+Δ
Mr. & Mrs. A. Davison Rice*
Ms. Elisabeth Saab & Mr. Chad Hansen+Δ
Mr. & Mrs. David Sabino*
Mr. & Mrs. William A. Shaheen, Jr.
Dr. & Mrs. Milton J. Siegel+Δ
Dr. & Mrs. Thomas Svitkovich
Ms. Donna L. Ullich+Δ
Mr. & Mrs. Robert J. VanDuyne*+Δ
Carlene & Rob VanVoorhies+Δ
Mr. Mark A. Walters+Δ
Mr. & Mrs. Erik WarrenΔ
Dr. & Mrs. Alan Weamer
Mrs. Lindsey Younger+Δ

Sustainer

(\$100 annually)

Dr. & Mrs. Mehmet Agabigum+
Mr. & Mrs. Robert Aguirre
Ms. Denise Ahonen
Clyde & Georgie Allard
Mr. & Mrs. Michael R. Allen
Mr. & Mrs. Timothy Allen
Ms. Catherine Anders
Mr. & Mrs. Bill Anderson
Mr. & Mrs. Robert Anderson*
Mrs. Catherine Andresen*
Mr. & Mrs. Gordon Andrews+Δ
Mr. & Mrs. Walter Andruszko & Family
Mr. & Mrs. William R. Angus+Δ
Mr. & Mrs. Edward P. Arends
Ms. Peggy Arnold
Mr. & Mrs. Ezra R. Artis, Sr.*
Ms. Susan K. Askins+Δ
Mr. & Mrs. Robert Atkinson+
Mr. & Mrs. Kenneth D. Baab
Mr. & Mrs. Matt Bach+Δ
Steven & Valarie Bailie
Mr. & Mrs. William Bajcz+Δ
Terry & Lynn Bankert
Mr. & Mrs. Michael Barker
Dr. & Mrs. Walter Barkey
Mr. Reid Baxter & Mrs. Diane Baxter
Mr. & Mrs. Kelly B. Beardslee
Mr. & Mrs. Richard Beauchamp*
Dr. & Mrs. William D. Beck & Kristen
Mr. & Mrs. Donald L. Becker+Δ
Mr. William L. Bennetts+
Ms. Darlene P. Benore & Ms. Cornelia MassoloΔ
Dr. & Mrs. Sultan M. Bhimani+

Ms. Edna R. Bick & Mr. John Helsom+
Jane Bingham+Δ
Mrs. Evelyn Nida Blanford+
Ms. Gail Blaszkowski
Mr. & Mrs. Donald A. Bomeli+
Mr. & Mrs. Howard Bondy
Ms. Dolores Borrow+
Mr. & Ms. Nicholas Bozen
Mr. & Mrs. John C. Briggs+
Mr. & Mrs. Paul Britz*
Mr. & Mrs. Berton Brown+Δ
Mrs. Cathy Brown
Mr. Denis Brown & Mr. Brian Shook*Δ
Rev. & Mrs. Kendall H. Brown
Ms. Marilyn BrownΔ
Mr. & Mrs. Robert Brown+
Mr. & Ms. Roger H. Brown+Δ
Mr. George Brueck & Ms. Barbara BrownleeΔ
Mr. Clay Buck*
Mr. & Mrs. Douglas Buck+Δ
Ms. Pat Buerkel & Ms. Tammy Williams+Δ
Ms. Dionanda Burnash*
Ms. Jennifer Burnett & Mr. Sean Siebigteroth
Mr. James Burns & Mrs. Gail McKone-Burns*
Mr. & Mrs. Joseph Burroughs+
Mr. & Mrs. Tom E. Butts+
Mr. Eric Caldwell+Δ
Mr. & Mrs. Michael Chaffee+Δ
Mr. & Mrs. Tom Cheek*+
Ms. Deborah Cherry+Δ
Lt. Gov. John D. Cherry & State Rep. Pamela Faris+Δ
Ms. Kay E.M. Cherry*+Δ
Robin & Kathleen Childress
Ms. Betty J. Clark+Δ
Mr. & Mrs. James Clodfelter, Jr.
Mr. Jay N. Clothier
Mr. & Mrs. Sheldon Cohn+
Mr. & Mrs. Bruce T. Colasanti*
Mr. David Coleman
Mrs. Mary ColemanΔ
Ms. Carol L. CookΔ
Mr. & Mrs. Thomas Cooper
Samuel & Darylee Coplin
Mr. & Mrs. Paul Corliss
Mrs. Cheryl Davy Courneya
Ms. Anna Cox & Ms. Deb Cox
Dr. & Mrs. Clifford J. Cox II*
Mr. Loren Crandell & Mrs. Karen Dolson-Crandell
Mr. & Mrs. George Cross
Mr. & Mrs. Daniel Cruz
Mrs. Nancy J. Cunningham
Dr. & Mrs. Michael Danic
Mrs. Judith L. Davidson
Mr. Alan Davis & Ms. Elizabeth Carmichael-Davis
Ms. Dorothy Gae Davis

Mr. James A. Davis & Ms. Carol M. Fabrizio
Mrs. Rosemary R. DeCamp
Mr. & Mrs. James DelDuca
Dr. B. Gail Demko
Mr. John V. Dempsey & Ms. Margy Lakin
Ms. Stephany R. Diana & Mr. Dennis Zawol+Δ
Ms. Carol Dickinson & Mr. Alvin Miller
Mrs. Cheri DickinsonΔ
Mrs. Margaret E. Diener+Δ
Ms. Jeanne Dobes
Mr. James & Dr. Carol Dowsett
Mr. Robert F. Dueueke
Mr. & Mrs. Chris J. Dundas+Δ
Ms. Wanda Dziwura & Mr. Jerry SomalskiΔ
Mr. Ryan M. Eashoo+Δ
Mr. & Mrs. Greg Eason
Mr. & Mrs. Richard H. Ebbott
Ms. Elizabeth Eby & Mr. Douglas Tobias*
Mr. & Mrs. Harvey Eisman*
Dr. & Mrs. Anthony R. Ellis
Mrs. Eileen Ellis
Mrs. Loretta C. Ellwood+Δ
Mr. & Mrs. Bennett Engelman+Δ
Mr. Fredrick Ennis*
David & Jill Esau
Dr. & Mrs. Ali A. Esfahani
Ms. Sarah Eubanks
Ms. Michelene A. FalkΔ
Ms. Tina FiloromoΔ
Miss Denise D. Fish+
Mrs. Billie Fisher+Δ
Ms. Nora G. Fisher*+Δ
Mr. & Mrs. Ron Fitch
Mr. & Mrs. Ed Fizell+Δ
Dr. & Mrs. Melvin Flamenbaum
Ms. Pam Folts & Ms. Sherry JohnstonΔ
Mr. & Mrs. Richard Foor+Δ
Ms. Carole Fufts & Ms. Debra Burger
Mr. & Mrs. Robert Garrison+
Ms. Sheryl Gasser & Mr. David Niergarth*
Mr. John R. Gazall
Mr. & Mrs. Gary Gebhardt+
Ms. Kathleen George+Δ
Mr. Thomas M. Gervasi+Δ
Mrs. Denise Ghattas
Mr. & Mrs. Elie Ghattas
Mr. & Mrs. Christopher Giroux
Mr. & Mrs. Tom Gisewhite+Δ
Mr. & Mrs. Doug Glazier
Mrs. Roberta L. Goergen
Debra A. Golden-Steinman & Dr. Harold V. Steinman+Δ
Mr. & Mrs. Lawrence C. Goldman
Mr. & Mrs. Jay Goldstein*
Ms. Karen Goldstein*

Mr. & Mrs. John Goll
Mr. & Mrs. Mike Gorris
Mrs. Jeanne Graham
Mrs. Margaret Greene
Mrs. Bobbie J. Greer
Mr. & Mrs. Melvin E. Gregory
Ms. Cynthia Greig & Mr. Richard Smith
Mr. & Mrs. Eugene B. Griffel
Mr. & Mrs. Walter Griffin
Ms. Peggy Hale
Mr. & Mrs. Thomas Halligan+Δ
Mr. & Mrs. Henry M. Hanflik+
Mr. & Mrs. Carl Hansen+
Mrs. Janice M. Hanson
Mr. Donald E. Harbin & Mrs. Elizabeth Perkins-Harbin+Δ
Mr. & Mrs. Daniel S. Harrett
Mr. & Mrs. Joel H. Harris+
Mr. & Mrs. Richard S. Harris
Samuel & Graciela Harris
Mrs. Maggie HartΔ
Mr. & Mrs. Ronald J. HartmanΔ
Mr. & Mrs. John B. Hartranft+
Ms. JoAnne Hatto+
Mr. Gregory Haynes & Mr. Richard Sonenklar
Ms. Karolatta Heath+Δ
Mr. Tom Heidel
Mr. John Hemingway & Mrs. Connie PalmerΔ
Mr. & Mrs. Jack Hempel
Ms. Annetta Hendrickson
Dawn Hibbard, Ray Rust & Family*+
Ms. Rebecca Higerson
Mr. & Mrs. Brent Himes
Mr. & Mrs. Tim Hinkle
Dr. & Mrs. John V. Hinterman
Mr. & Mrs. Py Hockin+Δ
Mr. & Mrs. Timothy A. Hohn
Ms. Betsy Homsher
Ms. Ethel Hooker+
Ms. Barbara H. Horcha & Mr. William Cross+Δ
Mr. Jeff House & Mr. Jonathan Shettler*
Mr. & Mrs. John Howell
Ms. Dena Howlett
Mr. & Mrs. Edward Hruska+Δ
Mr. & Mrs. Francis Hudson+
Mr. & Mrs. Clifford Hughes
Mr. & Mrs. Robert Hughes+Δ
Mr. & Mrs. Fred Huntzicker
Mr. & Mrs. Jeffrey Hurand
Mr. Robert Hurand & Ms. Katchen Schibiisky*
Ms. Kay Iddins+
Mr. & Mrs. Christopher Iden+Δ
Ms. Judith I. Ingram+Δ
Dr. Susumu Inoue
Ms. Elizabeth Ireland-Curtis+
Dr. & Mrs. John S. Isaac
Mr. & Mrs. Andrew Isola+Δ

Dr. William G. Jacoby & Dr. Sandra K. Schneider
 Dr. Gary K. Johnson & Ms. Donna Johnson*
 Ms. Dianne J. Johnson*Δ
 Mr. & Mrs. Earl D. Johnson
 Mr. & Mrs. Zelton Johnson*
 Mr. Al Johnston
 George & Christine Jones+Δ
 Ms. Christine Kalcic & Mr. Matt Kincius
 Mrs. Debra Kalush
 Mr. & Mrs. Franklin H. Kasle
 Dr. & Mrs. Larry I. Kassel+
 Mr. & Mrs. G. Donald Kaye+Δ
 Mr. & Mrs. Daniel Kelly
 Ms. Kitty Kelly+
 Mr. & Mrs. Robert Kilbourn
 Mr. & Mrs. Jimmy KingΔ
 Dr. & Mrs. Melvin Kipp
 Mr. & Mrs. Norman Kleiner
 Ms. Kathryn Kohout+Δ
 Mr. & Mrs. Jim Kolhoff+Δ
 Ms. Chene Koppitz & Mr. Mark Heggie+Δ
 Mrs. Mary E. Kramer & Mr. Ian Young
 James & Barbara Krogsrud+Δ
 Mr. & Mrs. Tim Kroll & Family+
 Mr. & Mrs. Brad Krueger
 Mr. & Mrs. Frederick L. Kump
 Edward & Donna Kurtz
 Ms. Sandra Kusza
 Mr. Marshal Lakis
 Ms. Carole LaMantia
 Ms. Lori Lamoreaux & Mr. Craig Lamoreaux
 Mr. Lawrence N. Larson
 Mr. & Ms. Stephen Larzelere-Kellermann+Δ
 Mr. & Mrs. Gary Latimore*
 Ms. Nancy LaVigne+
 Mr. & Mrs. Raymond Lee+Δ
 Stephen & Kathleen Leist+
 Mrs. Juldeen Lemke
 Ms. Susanne J. Les & Mr. Tim GreenΔ
 Mr. & Mrs. Carl A. Leser+
 Mr. David Levites & Ms. Gail Webster
 Ms. Kathy Liggett
 Mr. & Mrs. Thomas B. Lillie+Δ
 Mr. & Mrs. Kenneth Lindebrekke*
 Mr. Robert Lindsay
 Miss Judy Lindstrom
 Mr. Tim Lintz & Ms. Debra Lintz
 Mr. Alvern Lock & Mrs. Theresa Stephens-Lock*
 Dr. & Mrs. Edward T. Lock*
 Mr. & Mrs. John Loeding
 Mr. Donald Lovejoy & Ms. Danyel Bagby+
 Mrs. Judy Ann Lowrie
 Ms. Denise M. Lucas+Δ

Mr. & Mrs. Clifford Lutz
 Mr. & Mrs. Glenn Lysinger
 Mr. & Mrs. Laurence E. MacDonald+
 Ms. Suzanne MacWilliams*+Δ
 Ms. Doris Malfese
 Ms. Carol Masse+
 Mr. Michael Mathieu & Ms. Barbara Swartz
 Mr. James Maxwell & Dr. Michael Szappan
 Mr. & Mrs. Lee Maxwell+Δ
 Marilyn Mazanec & Gregory Jensenworth+Δ
 Mr. & Ms. Bernard McAraΔ
 Jack & Pam McCarthy
 Mr. & Mrs. Todd McCredie
 Mr. & Mrs. James McEwan
 Mr. & Mrs. Brad McFaul
 Dr. & Mrs. Jack McGaugh
 Mr. & Mrs. John J. McIntosh
 Mrs. Ruth A. McLearn*+
 Mr. & Mrs. Thomas B. McNally+Δ
 Dr. & Mrs. Kim P. McPheeters+Δ
 Mr. & Mrs. Michael Melet+Δ
 Mr. David Meyer & Dr. Julie MeyerΔ
 Mr. & Mrs. James MiganΔ
 Ms. Kareyna Miller+Δ
 Mr. & Mrs. Mark Miller
 Mrs. Helen G. Millhouse
 Mr. & Mrs. Robert D. Mills
 Mr. & Mrs. Edward A. Mitchell
 Mr. Thomas Mlynarski & Ms. Kathleen Martz+
 Mrs. Doris A. Moellering+
 Ms. Christy Moore+Δ
 Ms. Kerry Moore
 James R. & Helen Sue Morgan
 Mr. & Mrs. Don Morris
 Mr. & Mrs. Michael Munger
 Ms. Alice R. Murphy
 Mr. & Ms. Peter Murphy+
 Mr. & Mrs. Alexander C. Murray+Δ
 Mr. & Mrs. Robert W. Myers+Δ
 Mr. James Naddeo
 Mr. & Mrs. Walter Nagel+
 Mr. & Mrs. Phil Nash
 Mr. & Mrs. George Nassif
 Mrs. Jeanette Neu & Mr. Jesse Ballew+
 Mr. & Mrs. David R. Newbill+
 Mr. & Mrs. John Nieman
 Mr. & Mrs. Frank Ninteman
 Mr. & Mrs. Jon Northrup+Δ
 Mrs. Wilaine V. Northway
 Ms. Diane M. O'KeefeΔ
 Mr. & Mrs. Patrick O'SullivanΔ
 Dr. & Mrs. James Owen+Δ
 Mr. & Mrs. David Owen-Smith
 Ms. Mary M. Owens
 Mr. Keith A. Palka
 Ms. Carole A. Pappas+
 Dr. & Mrs. Edward Parish+Δ

Mr. Gordon Park
 Ms. Mary Parks
 Mr. Gary Parr
 Ms. Roberta S. Patt*
 Ms. Nanette Pearson & Mr. Kirby Milton+
 Ms. Jeanne Pepper & Mr. Thomas Herman+Δ
 Ms. Patti Perkins & Mr. Wayne Say
 Dr. Tam Perry
 Mr. & Mrs. Randall Petrides
 Mr. Douglas Petroni & Ms. Rosalie Buss-Petroni*+
 Mr. & Mrs. Vincent Pfaff*Δ
 Ms. Helen Philpott
 David & Randee Pieper+Δ
 Mrs. Janice G. PikeΔ
 Mr. & Mrs. Mark Piper
 Dr. & Mrs. W. Archibald Piper
 Mr. & Mrs. Drew Pitts+Δ
 Mr. & Mrs. James M. Polehna
 Mr. & Mrs. Curtis Pollack+
 Mr. Joshua Pore
 Mrs. Beverly I. Post & Mr. Richard Hoag+
 Mr. Morton Potter+Δ
 Mr. & Mrs. James PowellΔ
 Mr. & Mrs. Edward H. Powers*
 Mr. & Mrs. Timothy Purman*Δ
 Betty & Richard Ramsdell
 Ms. Aurora C. Raneses+
 Judge & Mrs. Robert M. Ransom+
 Richard & Ramona Ranville
 Mr. & Mrs. Adam Reigle*
 Mr. & Mrs. Jim Reigle
 Ms. Sally L. Reigle+
 Dr. Jacquelyn Reinertson+Δ
 Ms. Barbara Rentola
 Mr. & Mrs. Marc Resteiner
 Mr. & Mrs. Bruce Richardson
 Jane & James Richardson
 Mr. & Mrs. James P. Ricker
 Mr. & Mrs. Douglas Ricketts
 Ms. Theodosia Robertson+Δ
 Mr. Wayne Robson
 Ms. Christine RohrΔ
 Mr. Rob Rosario & Ms. Amy Surles-Rosario+
 Mr. & Mrs. Ralph R. Rossell+
 Mr. & Mrs. Brian Royce*+
 Mr. & Mrs. Bert Ruden
 Mr. & Mrs. Thomas Salvador+Δ
 Dr. Randle Samuels & Ms. Gail Offen+Δ
 Ms. Helen B. Sanders*
 Mr. Marshall H. Sanders & Dr. Sharon A. Simeon*+Δ
 Mrs. Amina Sayyid
 Mr. & Mrs. Richard Scarlett*
 Kenneth & Phyllis Schilling+
 Mr. Philip SchmitterΔ
 Mr. & Mrs. Derald Schnepf
 Mr. & Mrs. Greg Schnesk+Δ

Mr. & Mrs. Edwin Schreiber
 Mr. Richard T. Schroeder+
 Mr. & Mrs. Howard S. Schultz+Δ
 Ms. Janet A. Schultz+Δ
 Dr. & Mrs. Randy Schumacher
 Mr. & Mrs. Mark A. Schwartz+Δ
 Ms. Marsha V. Schwarz+Δ
 Mr. & Mrs. Russell Scibilia+Δ
 Dr. James Scott & Ms. Diane PiontkowskiΔ
 Mr. & Mrs. Tim Seaman*
 Mr. & Mrs. Curtis Seibert
 Ms. Diann Selleck
 Mr. & Mrs. Robert L. Shegos
 Mr. & Mrs. Thomas M. Shubert+Δ
 Mrs. Mary Shumsky*
 Ms. Christa M. Siegel+Δ
 Mr. & Mrs. Thomas Skunda
 Mr. & Mrs. Eric Smith
 Ms. Linda Smith
 Dr. Mildred B. Smith
 Ms. Sandra K. Smith+Δ
 Ms. Sheila R. Smith+Δ
 Mr. Dennis Souter*Δ
 Ms. Kristy Spann & Mr. Clay Spann+
 Ms. Shelley R. Spivack & Mr. Justin Scanlon+
 Mr. & Mrs. Fred Standridge
 Ms. Sherri Stephens
 Miss Barbara Stewart
 Mr. & Mrs. Lawrence Stewart*+
 Mr. & Mrs. John Straw*
 Ms. Suzanne Sugden+
 Mr. Michael Dingman & Mrs. Susan Sumner Dingman+Δ
 Ms. Diane Suttles
 Mrs. Mary Sutton
 Ms. Roberta Sweetman+
 Mrs. Nancy Swords & Mr. Chris Hopp+Δ
 Dr. & Mrs. Johannes Tall
 Ms. Ernelle Taylor+Δ
 Mr. Gene Taylor
 Mr. & Mrs. Carl D. Terwilliger
 Mr. & Mrs. Henry C. Thoma, Jr.
 Ms. Christine Thomas*+Δ
 Mrs. Ruth P. Thrash
 Ms. Dionanda Tillman+Δ
 Mr. Don Tinson II & Ms. Annette Shaffer+Δ
 Mr. Kevin Tompkins*
 Nickolena & Steven Topping
 Mr. & Mrs. Robert Turley+Δ
 Mr. & Ms. Earl Turner
 Ms. Suzanne Turpen
 Mr. Ted Van Steyn & Dr. Emily Feuerherm
 Ms. Ann Marie VanDuyne+Δ
 Ms. Jeanette Veenhuis
 Ms. Jolyn Vita*
 Mr. & Mrs. William Vredevoogd
 Ms. Jane C. Wagner
 Mr. & Mrs. William Walker

Mr. Harry Walters
 Ms. Carolyn Warren
 Mrs. Janet Warren & Mr. Harold Marks
 Mr. & Mrs. Jim Wascha+
 Mr. & Ms. Andrew Watchorn+Δ
 Mr. & Mrs. Lynn E. Webb
 Dr. & Mrs. Robert M. Weber
 Ms. Joyce Wefel
 Mr. & Mrs. Richard C. Weiermiller
 Mr. Dale K. Weighill & Mr. Sang Truong+Δ
 Dr. & Mrs. Stuart B. Weiner
 Ms. Mary E. Whaley & Mr. Rick Kroeger+Δ
 Dr. Charles V. White+
 Ms. Joanne White+Δ
 Ms. Mary Whitlock
 Dr. Elvira M. Wilbur
 Dr. & Mrs. James Williams+
 Mrs. Janet Williamson+Δ
 Mr. & Mrs. Mike Wilson+Δ
 Mr. & Mrs. Paul Wilson
 Ms. Ruth Winter & Mr. Tom Thibault+
 Dr. Sue Wisenberg & Ms. Donna BakerΔ
 Mr. & Mrs. William J. Wishart+
 Mr. & Mrs. David Withey+
 Mr. & Mrs. Jerome J. Wolbert
 Dr. Jessica Wolin & Mr. Frank Crownover*
 Mr. David Woloshen
 Mr. & Mrs. Ron Wurst
 Ms. Janice Yaklin+Δ
 Ms. Catherine Yeotis+Δ
 Judge & Mrs. Thomas C. Yeotis+Δ
 Mr. & Mrs. Paul Ytterrock
 Mr. & Mrs. Vincent Zamora
 Ms. Jane ZelnisΔ
 Mr. Mike D. Smith & Ms. Trish M. Zito-Smith+Δ
 Mr. & Mrs. Marvin Zmudczynski
 Dr. Kerry Zubke
 Mr. Stephen Zulinski+Δ
 Mr. & Mrs. Clair Ward
 Dr. & Mrs. George Zureikat

Family
 (\$50 annually)
 Ms. Velma Adams+
 Mr. Fenton A. Addington
 Mrs. Kimberley J. Alexander
 Mr. & Mrs. Mark Alexander
 Mr. & Mrs. Ricardo Alfaro
 Mr. Fred Allen & Dr. Denise Smith Allen
 Mr. & Mrs. Henry Allen
 Mr. & Mrs. Lewis Allen
 Mrs. Neketia Alyatim
 Mrs. Ann DeLana-Anderson
 Ms. Lee Anderson*
 Mr. & Mrs. Rodrigo Androde
 Mr. & Mrs. Anthony J. Artis*

Mr. John Asselin & Ms. Gail Dowson
 Mr. & Mrs. Ben Atkins
 Drs. Patrick & Theresa Atkinson
 Mr. & Mrs. Terrell Aubert
 Mrs. Tracey Avereyn
 Mr. & Mrs. D. Keith Baldwin*
 Bill & Tess Barker
 Mrs. Mellisa Barnes
 Mrs. Teresa Barnett
 Mr. Phillip Barnhart & Mr. Joseph Schipani*
 Mr. & Mrs. John Battles
 Mr. John Beach*
 Ms. Amy Beals
 Mrs. Patricia Beauvais
 Mrs. Angela Benchley
 Mrs. Debbie Benjamin
 Mr. & Mrs. Tim Bennett
 Ms. Stacie Bielec
 Ms. Kim Bistricky
 Mr. Lee E. Black
 Mr. & Mrs. Brian Boike
 Mr. David Bontumasi
 Miss Amanda Bowman & Mr. Joel Stoecklin
 Mr. & Mrs. David S. Boze & Molly
 Mrs. Doris E. Brandt
 Mr. & Mrs. Barry Braun*
 Mr. & Mrs. Kelly J. Brisbin
 Mr. Benjamin Brock+
 Ms. Betty F. Brown
 Mr. Jammal Brown
 Mr. Ronald Bruhn & Ms. Suzanne Bruhn
 Ms. Monica Buckley
 Ms. Connie Burgess & Miss Katie Burgess
 Miss Lauren Burtrum
 Mrs. Susan Burtrum
 Mr. & Mrs. Daniel Cady+
 Mr. & Mrs. Nicholas A. Calandro, Jr.
 Dr. Dennis Callewaert & Ms. Karen Callewaert
 Mr. Matthew Campbell
 Mr. & Mrs. Christopher Carr
 Kathleen S. Cauley
 Mr. & Mrs. Mike Chambers
 Mr. & Ms. James Cheek
 Ms. Abigail I. Chou+
 Mr. & Mrs. David Christian
 Mr. & Mrs. Bryan Christie
 Mr. Bob Clayton*+
 Dr. James Cohen & Ms. Caroline Kellogg
 Ms. Andrea Consiglio
 Mr. Joseph Coriati
 Mr. & Mrs. William Coulter*
 Mrs. Paula Crossnoe
 Mr. & Mrs. Joe Curtis
 Dr. Joseph Czaja
 Ms. Susan A. Damone+Δ
 Mr. & Mrs. William Daniels

Mr. & Mrs. Bob Darley+
 Mr. & Mrs. Peter Daunt+
 Ms. Denise Davidek & Mr. Brian Liljeblad
 Mr. & Mrs. Tim Davidek
 Mr. & Mrs. Jeffrey Davis*
 Mr. & Mrs. Michael Davis
 Mrs. Sharon Davis & Ms. Meredith Davis
 Ms. Claudia DeMonte & Mr. Ed McGowin*
 Ms. Sheila Denny-Fong
 Mrs. Elizabeth Dix+
 Ms. LeNoir Dobson
 Mr. & Mrs. Patrick Dobson
 Mr. & Mrs. Jeffrey Dompreeh
 Mr. & Mrs. Kenneth DuetschΔ
 Ms. Bethany Dumanois
 Dr. Kathleen Dunham & Mr. David Dunham
 Mrs. Lisa Duve+
 Mr. Greg Edquist
 Carol Egloff+Δ
 Mr. & Mrs. Harvey Eisman+Δ
 Mr. & Mrs. Shantaram G. Ekhande
 Mr. & Mrs. Steven Elkins
 Dr. & Mrs. Anthony R. Ellis
 Mr. & Mrs. George Emery
 Ms. Jessica Engstrom
 Mr. Jim Erwin & Ms. Diane Root
 Mrs. Vera Farah
 Mr. & Mrs. Mark Farella
 Mr. & Mrs. Allan Fee
 Mr. & Mrs. Daniel Fiedor+
 Ms. Shannon Flanigan
 Mr. & Mrs. Robert Florine*
 Mr. & Mrs. Michael B. Foote
 Mr. Richard W. Fortner+Δ
 Ms. Chandra Forward
 Ms. Marianne Forys
 Ms. Laura Friesen & Mr. Bruce Green+Δ
 Ms. Lynn Friesen-Davis
 Mr. & Mrs. Jeff Garrett
 Ms. Kathleen Gates
 Mr. & Mrs. James Gaver+
 Ms. Linda Gibson*
 Ms. Anne-Marie Gierens & Mr. Curtis Johnson
 Mr. & Ms. Jonathan Glab+Δ
 Mr. & Mrs. Michael Goetz
 Ms. Ronda W. Goldfarb
 Mr. & Mrs. Lawrence C. GoldmanΔ
 Mr. & Mrs. Joshua Gonzalez
 Ms. Pamela Goodwin
 Dr. Shamaron Grace
 Gordon Grandy & Jodie Wright Grandy+
 Mr. & Mrs. Robert F. Granville+
 Mr. John M. Hackett & Ms. Christy A. Walker-Hackett
 Mr. & Mrs. Jack Hagen
 Ms. Duaa Haggag

Mr. & Mrs. Gary Hansz
 Ms. Forleasadon Harper
 Mr. Kenneth Haubert
 Mr. Louis A. Hawkins+Δ
 Ms. Pamela L. Hawkins
 Mrs. Judith HenleyΔ
 Mr. & Mrs. Carlos Hernandez
 Ms. Carol Higgins & Mr. Pat Perrine
 Mr. & Mrs. Craig Hinshaw*
 Dr. & Mrs. Huseyin R. Hiziroglu+Δ
 Mr. Mary Holbrook & Mr. Joshua Holbrook
 Ms. Katherine Holley
 Ms. Nadie B. Holmes
 Mr. Raymond Hopson
 Mr. & Mrs. Michael Hosler+Δ
 Mrs. Barbara Hotary
 Mr. & Mrs. Robert Houbeck
 Mr. & Mrs. Dennis House*
 Ms. Ann Howard
 Mrs. C. Hudson
 Mr. & Mrs. Josh Hurand
 Ms. Sara Hurand & Mr. Elie Weiss
 Mr. & Mrs. Thom M. Hutchison
 Mr. & Mrs. Robert E. Iden
 Miss Katrina Ireland-Torrey
 Ms. Rebecca Jackson
 Mrs. Linda Lee James
 Mr. & Mrs. James Jarvis
 Ms. Lisa Jaworski & Mr. John Baker
 Mrs. Tracy A. Jennings
 Mrs. Mary Johns
 Ms. Jimmie Johnson
 Ms. Joelle Jordan
 Mr. & Mrs. Michael B. Jordan
 Mr. Ashish Kanwar
 Ms. Linda C. Keller & Mr. Donald J. Mosher
 Aaron & Emily Kelley+Δ
 Mr. & Mrs. Christopher S. Kelly, Sr.+
 Mr. A.P. Kennedy
 Mr. & Mrs. Daniel Kenny*+
 Mr. & Mrs. Matt Kenny
 Mr. Mike Kinnunen*
 Mr. & Mrs. Russell Kirksey
 Ms. Jane Kleynberg & Ms. Lily Cicci
 Mr. Kenneth Kliewer & Ms. Maria Garcia
 Mr. Matthew Knuth
 Mr. & Mrs. Scott LaForest
 Mr. Joe Lajewski
 Mr. Miles Lam
 Mr. Brian Larkin & Ms. DeAndra McCain
 Ms. Jennifer Lasco
 Mr. Steve Laurin & Ms. Tiffanyey Laurin
 Mr. Brant Lavengood & Miss Alyssa Lavengood
 Ms. Sandra Law

Mr. Lanice J. Lawson
 Dr. & Mrs. Alexey Levashkevich
 Dr. & Mrs. John A. Ley
 Mr. & Mrs. Edward Lipke
 Ms. Kristie Lisek
 Mr. Gregory Long
 Dr. & Mrs. John Love
 Tiffany Lovett
 Mr. David Lucas
 Mr. & Mrs. Mark Lundy
 Mr. Alan Lynch*
 Dr. & Mrs. Ramotsumi Makhene*
 Fr. Steve Makranyi+Δ
 Linda & Douglas Mark
 Mrs. Susan Marr
 Mr. Michael Martin & Mr. Bryan Paris
 Ms. Allison Marusic
 Mrs. Linda Mason
 Mr. & Mrs. Matthew Mather
 Mr. & Mrs. Robert Mau*
 Mrs. Bobbie McAllister+
 Mr. Ari McCaskill
 Mr. Rafeal McDaniels & Mr. Nathaniel Walker
 Mr. Kevin McGlashen & Ms. Lisa McGlashen
 Mr. Keith McGrady
 Ms. Gwyn B. McKay
 Mr. & Mrs. Ed Meier
 Mr. & Mrs. Kenneth Milito
 Mr. Marvin L. Miller
 Mr. & Mrs. Ronald D. Moen*
 Mr. Rafael Mojica & Mrs. Yolanda Mojica
 Mr. Ramon Molina & Ms. Anne Brothers
 Mr. & Mrs. Steward A. Moore+Δ
 Ms. Lori Motley
 Mr. Yad S. Mui
 Mr. & Mrs. David Mulligan
 Ms. Keiona Murphy
 Mrs. Linda Murphy
 Ms. Sandra L. Murphy
 Ms. Danyl Murray
 Ms. Anne Naber*
 Ms. Heather Nassar & Alex Nassar
 Ms. Cynthia Nicholas
 Ms. Kate Nickels
 Jonathan Nigrine & Kelly Nigrine
 Mr. & Mrs. Ed O'Mara
 Mr. & Mrs. Edward A. Ogul
 Ms. Gina Olivo
 Mr. Joseph Opalinski
 Ms. Lizabeth Orr
 Ms. Jacquie Osborn & Mr. Jim Osborn
 Mr. & Mrs. Peter Ott*
 Mr. & Mrs. Jerry Pakkala
 Mr. & Mrs. Joseph Palazeti*
 Mr. & Mrs. Lee Parks+
 Mr. & Mrs. Gordon Parnes
 Mr. & Mrs. Tim Parrott
 Dr. Ben Pauli & Ms. Vivian Kao

Mr. Matthew Payne & Mrs. Patricia Payne
 Mrs. Nancy Pennell
 Ms. Judith Perez
 Mr. Glenn Petersen & Ms. Susan Lubanski+
 Mr. & Mrs. Tom Peterson*
 Mrs. Pam Pfeiffer
 Mr. & Mrs. Gary Philpott+Δ
 Mr. Wayne Pickvet & Mr. Bruce A. Barrett
 Ms. Ariel Pierce & Family
 Mr. Richard Pierce & Ms. Laurie Pierce
 Ms. Lorna L. Place
 Ms. Christy Podhorsky
 Ms. Jennifer Prentice & Mr. Todd Carpenter
 Mrs. Daphne Prescott
 Ms. Frances J. Price
 Ms. Chitra Pulliam
 Dr. Paul J. Racine
 Ms. Carol Raznik
 Ms. Melissa Redmond & Ms. Denise Penwell
 Mr. & Mrs. Richard Reed
 Mr. & Mrs. Gary Richards & Family
 Mrs. Vanessa Robar
 Ms. Suzanne Rock & Mr. James Uicker
 Ms. Nadia G. Rodriguez
 Mr. & Mrs. Alan Rohde
 Mr. & Mrs. Robert Romanowski+
 Mr. & Mrs. Barry Rosen
 Mr. & Mrs. Terence Ross*
 Mr. & Mrs. Paul Rozycki+Δ
 Mr. & Mrs. Allen Salyer
 Ms. Kathy Saunders & Ms. Sandra Hodges
 Dr. & Mrs. Joshua Sauvie
 Mr. & Mrs. Casey Schaub
 Mr. Matthew Schlinker & Ms. Sherry Dodge Schlinker*
 Mr. Jeffery Searles+
 Ms. Linda Sebok
 Mrs. Leslie Sedlarik & Mr. Matthew Sedlarik
 Ms. Martha Shaver
 Mr. & Mrs. Tim Shorkey
 Mr. & Mrs. James Shurter+
 Mr. Scott Siefker
 Mr. John J. Mrozik & Ms. Heather Sisto
 Mrs. Theresa Skene
 Mr. & Mrs. Donald SkundaΔ
 Mr. Vincent Slocum
 Mr. & Mrs. James Smith
 Ms. Jenifer Smith
 Mr. & Mrs. Worley Smith+
 Mr. & Mrs. Dale Snyder
 Mr. & Mrs. Bernie Solo
 Ms. Kecia Spencer
 Mr. Michael Sprague & Dr. Janet Sprague

Ms. Kate Spruit-McGoff & Ms. Mary Spruit
 Mr. & Mrs. Norm Stewart
 Mr. & Mrs. Paul G. Streby+
 Mr. Eric Strommer
 Ms. Amy Strong
 Ms. Carol J. Strong
 Mr. Dave Stump
 Mr. & Mrs. Douglas C. Swanson
 Dr. David Taylor
 Mr. & Mrs. Jim Tedder
 Mr. & Mrs. Richard Tesner
 Ms. Jani Thomas
 Mr. & Mrs. Daniel Tipton+
 Ms. Anh Tran
 Mr. & Mrs. Bruce Trevithick+Δ
 Dr. & Mrs. Allen F. Turcke
 Mr. & Mrs. Umphrey
 Mr. & Mrs. Robert Vale
 Mrs. Julie Van Cura
 Ms. Bernadette Van Slyck+
 Mr. Marcos A. Vargas
 Mrs. Melissa Wade
 Mr. & Mrs. Douglas Walker*
 Ms. Barbara Wallace
 Mrs. Charity Walsh
 Mr. & Mrs. Zach Warby
 Mr. & Mrs. Valdemar L. Washington
 Ms. Susan M. Wedda & Ms. Carol J. Ferguson+
 Ms. Kathleen A. Weiss & Dr. Scott A. Graves M.D
 Mr. Ryan White
 Mr. & Mrs. Brian Williams
 Mr. & Mrs. Octavio Williams
 Mr. & Mrs. Anthony Williby
 Mr. & Mrs. John R. Willing
 Mr. & Mrs. Glenn Wilson*
 Ms. Natalie Wilson & Mr. Brian Ferriby*+
 Ms. Monaca Wood
 Mr. & Mrs. David Wujciak
 Mrs. Debbie Yon
 Mr. & Mrs. Paul A. Zimmermann

Dual
 (\$40 annually)
 Mr. William V. Abendschien & Mrs. Mary Ann Sullivan-Abendschein+
 Dr. Judy Ableser & Rabbi Jeffrey Ableser
 Mr. & Mrs. T. C. Alarie
 Rex Alexander, Rochelle & Jillian Molyneaux
 Ms. Lynn K. Allen & Mr. Robert Cox+
 Mr. Mandel Allweil & Ms. Cathy Brown
 Mr. & Mrs. Richard Alonzo
 Ms. Marilyn M. Alvey+
 Mr. & Mrs. Willis Anderson
 Ms. Carol Andrews-Goyt & Mr. Terry R. Goyt

Dr. & Mrs. Danny Aronovitz
 Mr. Ronald Artis
 Mr. & Ms. Willie E. Artis
 Mr. & Mrs. Armen Asher
 Mr. Kevin Avery & Mrs. Angela Brooks-Avery
 Mr. & Mrs. David G. Babieracki+
 Mr. John Bach & Ms. Mary Alice O'Malley+Δ
 Mr. & Mrs. John Baker
 Mr. David Barber & Mr. Paul Wizynajtys+Δ
 Mr. Richard Barber & Ms. Sharon Baker
 Mr. Wayne Barber & Mr. Rich Fitz
 Mr. Al Barron & Ms. Cindy Gunn
 Gary & Maureen Bates+
 Ms. Patti Baumgardener
 Mr. & Mrs. A. David Baumhart IIIΔ
 Mr. & Mrs. Fred Bearman+
 Mr. & Mrs. Donald L. Bell
 Ms. Vicki L. Bell & Mr. Greg Riley
 Mr. & Mrs. Martin Bernstein
 Ms. Linda Bjaland & Ms. Lila Bjaland+
 Mr. & Mrs. Richard Blakeley
 Mr. John Blankenship & Ms. Barb Brownson*
 Mr. & Mrs. James Bleicher
 Mr. & Mrs. Thom Bohnert+
 Mr. Michael Borrer
 Mr. & Mrs. John Bracey
 Mr. & Mrs. Edwin Bradley+
 Ms. Carole Braid & Ms. Michelle Wilson
 Mr. & Mrs. John A. Brancheau
 Mr. & Mrs. Carl Brandt
 Dr. Campbell Britton & Mr. Jonathan Britton
 Ms. Ellen Brothers
 Ms. Rhonda Broussard & Miss Charity Broussard
 Mr. Aaron Brower
 Mrs. Kimberly Brown*+Δ
 Dr. Loretta Brown & Mr. Robert Brown
 Ms. Monica BrownΔ
 Mr. & Mrs. Willie Bruce+
 Ms. Peggy Brunner
 Ms. Lorraine Brush*
 Mr. & Mrs. Michael Burkley+
 Ms. Diann Parks Cameron & Mr. Larry Jones
 Mr. & Mrs. Robert Carlin+
 Ms. Cindy Carney
 Mrs. Diana Carr
 Mr. & Mrs. Michael Carr
 Mr. Wade Carver & Ms. Heather Meier+
 Mr. & Mrs. Jeff Chimovitz
 Mr. James R. Chintyan+Δ
 Mr. & Mrs. Phil Christensen
 Mr. Roy Churchill

Ms. Sandy Cleomaude & Ms. Debra McGee
 Mr. & Mrs. David Coburn+
 Mr. & Mrs. Robert Conaway
 Mr. & Mrs. Steve Corey
 Mr. & Mrs. Mark Corrigan+
 Mr. & Mrs. Gary Cox
 Mr. & Mrs. William Cox+
 Mr. Gale Crooks
 Mr. & Mrs. Fred Cross+
 Mr. & Mrs. Robert L. Daly+
 Mrs. Debra M. Danko*
 Mr. & Mrs. Ronald Davies
 Mr. & Mrs. Skip Davis
 Mr. & Mrs. Stuart DavisΔ
 Mr. & Mrs. Ned DeGalan+
 Ms. Laurie Dexter & Ms. Patricia WilsonΔ
 Mr. & Mrs. Ray Diem
 Ms. Audrey E. Dismond & Ms. Becky Scott*+
 Mr. & Mrs. Bruce Dobras
 Father Paul J. Donnelly+
 Ms. Joan Donovan & Mr. Joey Donovan
 Ms. Nancy Hagle-Duffy
 Mr. Dennis Dunlavey
 Mr. & Mrs. Lou Dupree
 Dr. & Mrs. Zachary Dyme
 Mr. & Mrs. Paul Easter
 Mr. & Mrs. Jim Edwards
 Mrs. Brenda Eisele
 Murray & Sharon Eisen
 Ms. Erin Elliott*
 Mr. & Mrs. John Emmert
 Mr. & Mrs. Joseph A. Eufinger
 Mrs. Robin Evans
 Ms. Marta Mary Fakhoury
 Mr. & Mrs. Jim Farber
 Mr. & Mrs. Jack Feuerstein+Δ
 Mr. & Mrs. William Flanigan
 Mr. & Mrs. James P. Ford
 Mr. & Mrs. George Francis
 Mr. & Mrs. Les Frazee
 Mr. & Mrs. Paul Gallinat Jr.+
 Mr. & Mrs. Howard F. GallowayΔ
 Mr. & Mrs. Ken Galvas*
 Mr. Anton Gardner
 Mr. & Mrs. John Gembinski
 Dr. Petros Gheresus & Mrs. Lestine Gheresus
 Mr. & Mrs. Roger Gilmour+
 Mr. & Mrs. Steven Glass+
 Ms. Sally Glover*
 Mr. & Mrs. Nick Godlesky
 Douglas & Susan Goering
 Mr. & Mrs. Tom Gohsman+
 Mr. Avram Golden & Ms. Emma Kadjo*
 Ms. Jeanna Gooch & Mr. George Lieber*
 Mr. & Mrs. Johannes Gorke
 Ms. Angela Green-Izzo & Mr. Walter SoonΔ

Mr. Daniel Greenia & Ms. Nancy Greenia
 Mr. & Mrs. Shane Grennay
 Mr. & Mrs. Robert Guenther
 Ms. Deb Gustafson & Ms. Sue Weston+
 Mr. Alan D. Hackett
 Mr. & Mrs. Lawrence Hackett
 Ms. Mary C. Haering*
 Mr. Fred Hall & Ms. Mary Boyer+
 Dr. Barbara Hamilton & Mr. Robert McGowan
 Dr. & Mrs. Franklin W. HamiltonΔ
 Mr. & Ms. Douglas Hanaford
 Mr. & Mrs. Anthony A. Hanak+Δ
 Mr. James Hansen
 Ms. Barbara Hardaker & Mr. Todd Benner
 Ms. Janice T. Harden+
 Mr. & Mrs. Kirk Harder
 David & Donna Hart+Δ
 Mr. & Mrs. Jacob Hawkins
 Mr. & Mrs. Andrew Hazlewood
 Mr. & Mrs. Edward G. Henneke+
 Mr. Andrew Henry
 Mr. & Mrs. John Hillman
 Mrs. Mary Jo Hobart-Parks
 Mr. & Mrs. Gurdon Hobson
 Ms. Barbara Holmer & Mr. Robert Stanisch
 Mr. & Mrs. Ronald M. Horton+Δ
 Ms. Shayna Hosler & Mr. James Mason+Δ
 Ms. Merry Hosner
 Mr. Gerald House
 Ms. Jennifer Howard & Ms. Sheila Smith
 Bridget & George Hughes+
 Mr. & Mrs. John Hughes+
 Mr. & Mrs. Larry Hulburt
 Ms. Mary Kay Hurren
 Mr. Gail Hurst & Ms. Ruth Hurst
 Mr. & Mrs. Philip Jackson
 Mr. & Mrs. Tim Jacques
 Mr. & Mrs. Steven A. Jadwin+
 Mr. & Mrs. Mitchell Jarosz
 Mr. Kenneth Johnson & Mrs. Sheila Kelly
 Mrs. Tonja Johnson
 Mr. Sam Jones & Dr. Beverly Jones
 Mr. & Mrs. Kenneth Jordan
 Mr. & Mrs. William A. Karas II
 Mr. & Mrs. Patrick Keavy
 Ms. Nancy Kehoe & Mr. Dennis Kehoe
 Mr. James R. Kelly & Mr. Michael Hanson
 Ms. Colette Kenville
 Mr. & Mrs. Dennis KingsleyΔ
 Mr. & Mrs. Keith KlineΔ
 Mr. & Mrs. Michael Knag
 Mrs. Camille Koger-McCree & Mr. Kyle McCree

Mr. & Mrs. Rudolph N. Kohn
 Mr. & Mrs. Michael Koviack+
 Mr. & Mrs. Lawrence F. Kratz*
 Mr. & Mrs. Thomas Kudza
 Mr. & Mrs. Gary Kuiper
 Mrs. Debra L. Lampson-Coats
 Mr. William Lane
 Mr. & Mrs. Shannon Langley
 Mr. & Mrs. Mike Laux+
 Mr. & Mrs. Lee LaVictoire+
 Ms. Andrea LeGendre & Mr. Joseph Farah
 Mr. & Mrs. Rick Legleitner
 Mr. & Mrs. Joe LePard
 Mr. Bill Lickman
 Mr. & Mrs. Blake Lieffers
 Mr. & Mrs. Steven Low+Δ
 Mr. & Mrs. Chad Lucia
 Mr. & Mrs. Richard MacDonald
 Claudia & Richard Mach+
 Ms. Katherine Maitland & Mr. Barry McGhan
 Mr. & Mrs. Andrew Markell
 Mr. & Mrs. Brian Martin
 Ms. Nicole McAllister
 Ms. Pamela McBride
 Mr. Rafe McBride
 Ms. Michelle McCoy
 Mr. William K. McDonald+
 Mrs. Audrey McDonough & Ms. Shanna McDonough+Δ
 Mr. & Mrs. James McDougal
 Mrs. Mary Grace McFarlane*
 Mr. Raymond A. McKee & Ms. Shirley Eason+Δ
 Mr. & Mrs. Peter McKenna
 Mr. Richard McNally+
 Ms. Krista McNeice
 Mr. & Mrs. Neil McPheeΔ
 Ms. Lisa MeinburgΔ
 Mr. & Mrs. Craig Mengel
 Ms. Pennie A. Meyers+
 Mr. Shai M. Brosh & Ms. Christine Mieloch*
 Mr. & Mrs. Allan Moore
 Hon. & Mrs. Eugene A. Moore
 Mr. & Mrs. Tom MoylanΔ
 Mr. & Mrs. Rick Murphy
 Ms. Samantha Murphy & Mr. Nathan Barnett
 Dr. & Mrs. Jack Nettleton+
 Ms. Camille Nitschky & Ms. Lynn Vela
 Ms. Janet T. O'Keefe & Ms. Rose Ann O'KeefeΔ
 Mr. & Mrs. Ronald Oskey
 Mr. & Mrs. Nathaniel Ostrom
 Mr. & Mrs. Joseph Paliani
 Ms. Connie Parker
 Ms. Roberta Parkhill
 Mr. John Parsons
 Mr. & Mrs. Richard PasiakΔ
 Mr. & Mrs. Roger Pelkey
 Ms. Nancy S. Petrie

Mrs. Heidi Phaneuf
 Mr. & Mrs. Michael Phillips
 Ms. Jacqueline Piechowski
 Mr. & Mrs. Thomas G. Pierson
 Ms. Debra Piper+
 Mr. Brian Polisky & Ms. Leslie Trout+Δ
 Mrs. Vivian Polzin
 Ms. Karen Prater+
 Mr. & Mrs. Edward J. PrevilleΔ
 Mr. & Mrs. Robert J. Pries
 Mr. Thomas Pugsley & Ms. Susan Sage
 Mr. & Mrs. William Pyles+
 Mr. & Mrs. Dante Ragnone*
 Mr. Alberto Ramirez & Ms. Vidal Perez
 Mr. & Mrs. Robert W. Ranta+
 Mr. Patrick Ranville
 Dr. & Mrs. N. N. ReddyΔ
 Mr. & Mrs. Brian Renaud
 Mr. & Mrs. Melvyn R. Rettenmund
 Dr. & Mrs. Lawrence Reynolds
 Mr. & Mrs. Dale Rice
 Mr. Alfred Arnold & Mrs. Dolores M. Roat-Arnold
 Ms. Ellen Bartley Robinson
 Ms. Cynthia Robson & Mr. Darwin Norrington*+
 Dr. & Mrs. Paul Roetter+
 Mrs. Cheryl A. Rogers
 Mr. & Mrs. Richard Rogers
 Mr. & Mrs. Bert Ruden
 Mr. & Mrs. Richard J. RuhalaΔ
 Mrs. Mary-Lou Rynski*
 Ms. Vernelle Salaam
 Mr. William Salo*
 Mr. & Mrs. Martin Saltiel
 Mike & Judy Sanford*
 Ms. Leyla Sanker & Marty Homan
 Ms. Sarah Scheitler & Mr. Jacques Doucet
 Ms. Roxie Schell
 Mrs. Arlene A. Schmitzer
 Mr. & Mrs. Troy Schroder+
 Miss Gizela Schwartz
 Ms. Kathleen A. Sheehy
 Mr. & Mrs. Jason Shellhaas
 Mrs. Rose Shepard
 Dr. Richard & Rose Marie ShickΔ
 Dr. Janice Shimoda+
 Ms. Jo Shouse & Ms. Pat Hancock+Δ
 Mr. & Mrs. David J. Simoni
 Mr. & Mrs. Ray N. Sinclair*+
 Mr. & Mrs. Daniel Smith+
 Mrs. Germaine D. Smith
 Mr. & Mrs. Rohn Smith
 Mr. & Mrs. Marc Speiser
 Miss Gabrielle Stephens
 Mr. Andrew Stout & Mrs. Stevie Cooper
 Mr. & Mrs. Edward Strong+
 Dr. & Mrs. John Sullivan+

Mr. & Mrs. Jack Sustic+
 Mr. & Mrs. Franklin Swart
 Mr. Ken Swisher
 Mrs. Michel Taylor
 Mr. & Mrs. F. William Thewalt
 Ms. Jeanne C. Thick & Mr. John Nelson
 Mr. & Mrs. Thomas Thompson
 Mr. & Mrs. Roger Timm+
 Mrs. Linda Todorow
 Mr. & Mrs. Paul N. Torre
 The Trubiro Family
 Rev. Tom & Mrs. Beth Wachterhauser+
 Mr. Jason Waggoner
 Mr. & Mrs. Pranjali C. Wakade
 Mr. & Mrs. James Waner+
 Mr. & Mrs. Ricky Ware
 Mr. & Mrs. Patrick Warner
 Mrs. Jamie Welch
 Mr. Daniel Whalen & Ms. Shannon Gracz
 Mr. & Mrs. Jon Wheeler+
 Mr. & Mrs. William WhiteΔ
 Mr. & Mrs. Matthew Widdick+
 Mr. & Mrs. Aaron Wiens*
 Ms. Kimberly Wilcox+Δ
 Mr. & Mrs. Steve Williams
 Ms. Jayne Young
 Mr. & Mrs. Robert Ziegler

Individual
 (\$30 annually)
 Ms. Dawn Abbott
 Ms. Susan Acton
 Mr. Guy Adamec
 Ms. Julie A. Adams
 Miss Michele Addington*
 Mr. Gerald Alcorn
 Mrs. Laura Alderman
 Ms. Judith Alexander+
 Ms. Michelle Alexander+
 Mrs. Dolores R. AllenΔ
 Ms. Margaret Allen
 Mr. Jim Ames
 Mr. Matthew Anderson
 Mr. & Ms. Bill Andrus
 Jarreen Ankton
 Mr. John Archangeli+
 Ms. Brenda Arsenault+
 Mrs. Barbara Asa
 Ms. Frances L. Ascencio+
 Mrs. Leesha Aseitine
 Ms. Andrea Ashmore
 Ms. Kelly Atherton
 Mrs. Mary Baehr
 Ms. Roseanne Bagale+Δ
 Mr. Michael Bailey
 Ms. Lisa Ballard
 Mr. Chris Balog+
 Miss Shirley Bannatyne
 Mr. David J. BarkeyΔ
 Mrs. Barbara Barrell
 Ms. Ellen Barrett
 Ms. Kelly Baty

Mrs. Linda Bedtelyon
 Mrs. Doris Beebe+Δ
 Ms. Jessica Beers
 Mrs. Sharon Belott
 Ms. Kathleen Benish
 Ms. Patt Bennett
 Ms. Carol Berger
 Mrs. Elizabeth A. Bickford+
 Ms. Mary K. Bickley+
 Mrs. Rosemary Bigelow
 Mrs. Brenda Bindschatel
 Ms. Shirley I. Blair
 Mrs. Mary Blanchard+
 Ms. Valerie Blanchett
 Ms. Mary Bluteau
 Ms. & Mrs. Kimberly A. Bodette
 Ms. Diane Boegner
 Mr. David Booth
 Mrs. Connie Borrie
 Ms. Leisa Borrer
 Ms. Lisa Borton
 Ms. Denise Bowles+Δ
 Ms. Michelle A. Bowman
 Ms. Lois Boyd
 Ms. Mary Ann Boyd
 Ms. Nancy Bradley
 Miss Jeanette Brayon
 Mr. Brian Bremer*
 Mr. Leo Brennan
 Ms. Galina Britton
 Mrs. Sharon Brock
 Ms. Becky Brown
 Ms. Jessi Brown
 Mr. Kofi Brown
 Ms. Mary Brown+
 Mr. Ross Brown
 Ms. Sheryl Brown
 Ms. Joy Bubnitz+
 Ms. Judith A. Buffenbarger+
 Wendy A. Bundgaard
 Ms. Sandra Burbas
 Ms. Tamera Burgess+
 Mrs. Patricia Burk
 Ms. Martha Calhoun+
 Ms. Lois CallanΔ
 Ms. Janet Cameron+
 Ms. Suzan Campbell
 Ms. Debra Carmody
 Mr. John P. Carter+
 Mr. Terry Castor
 Ms. Diane Castro-Munoz
 Dr. Sherry Cavanagh
 Ms. Teresa Charette
 Mrs. Patricia A. Chipman+
 Ms. Cheryl ChristoffΔ
 Miss Anne Cole
 Ms. Marcia Cole
 Dr. Elizabeth Collardey
 Ms. Tracy Collier-Nix
 Mrs. Patricia O'Shea Comben
 Mr. Albert CominsΔ
 Ms. Lorraine Conaway
 Ms. Sandy Cook
 Ms. Theresa Cooper

Rev. Mary B. CovingtonΔ
 Mrs. Shelly Cox
 Ms. Vera L. Crandall
 Ms. Colleen Crandell
 Mr. Tim Crane
 Mr. Ron Crichton
 Mr. Thomas H. Crooks
 Dr. Ronald Crow
 Mrs. Renee Crutcher
 Mr. Robert H. Curtis
 Mr. Edwin D. Custer
 Mrs. Shirley I. Daly
 Mrs. Mary Damanskas
 Mr. Ray Davio
 Ms. Betty L. Dell
 Ms. Crystal Demps
 Ercis Urisaeam Migrateaem Uiriesausa Den glücksburgske slægt
 Miss Vanessa Dendy
 Ms. Daiva Devereaux+Δ
 Mrs. Marcia Dicks
 Mrs. Beverly J. Dillon
 Ms. Shelia Dirrim+
 Ms. Marissa Ditri
 Mrs. Elaine M. Dobrowolski
 Ms. Kathleen Dockter+
 Dr. Deb Doherty+Δ
 Mr. Scott Dolan
 Mrs. Kathy L. Dotson
 Ms. Joan E. Dowler+
 Ms. Alla Dubrovich
 Ms. Patricia S. Duffy
 Ms. Christine Dugas
 Mrs. Michelle Dummer
 Ms. Shirley Dunbar-Pumphrey+Δ
 Ms. Kathleen Duval
 Ms. Michelle J. Dvorak
 Ms. Karen Eaton
 Mrs. Gloria J. Eby-BuckΔ
 Mr. Phil Edelman
 Ms. Jenni Edgington
 Ms. Pamela Ehde
 Ms. Barbara A. Elford
 Mrs. Lynn Elliott+
 Mr. Alan S. Ells
 Mrs. Rosemary EmertonΔ
 Mr. George Ensinger
 Ms. Ida L. Epstein+
 Ms. Nancy Epstein+
 Ms. Adele Ernsberger
 Ms. Cynthia Ernst
 Ms. Sarah Eubanks
 Ms. Clare Evans
 Mrs. Catherine Everhart
 Ms. Rita Fagan
 Mr. Lawrence S. Falardeau
 Mr. Michael Fales
 Mr. William Falkenberg
 Ms. Gisele Farah
 Mr. William Farmer
 Ms. Mary S. Felix+Δ
 Mr. Craig Fenner
 Mr. Gregory D. Fiedler+Δ

Ms. Andrea Zlatec Floden+Δ
 Mr. Bruce Focht
 Mr. Bruce Ford
 Dr. Colleen FordΔ
 Ms. Alice R. Foster-Stocum
 Mr. Donald F. Fournier
 Ms. Amy Freeman+
 Ms. Emma Frownfelter
 Mr. Rodney Fulcher
 Ms. Brianna Fuller
 Mr. William D. Fuller+Δ
 Ms. Joyce M. GadolaΔ
 Ms. Virginia Gaffney+
 Mrs. Kelly Gagliardo
 Ms. Donna M. Gardiner
 Ms. Christine Gardner+
 Ms. Jill Gardner
 Andrew Garrett
 Ms. Mary Gartland
 Ms. Patricia GebhardtΔ
 Ms. Judi GenerousΔ
 Judge Kathryn George
 Mrs. Alicia Geromel
 Ms. Lee Giacalone
 Ms. Denise Giangrande
 Mr. John A. Giolitti
 Mr. Anthony Gittens
 Ms. Grace Glass
 Ms. Maria Gonzalez+Δ
 Ms. Kerri Goodman
 Mrs. Debi Goulet
 Mrs. Marjorie Goza
 Ms. Tina Grant
 Mr. Rayford Gray
 Ms. Rebecca Gray
 Ms. Linda Green
 Sara Gribowskas
 Ms. Julie Griess
 Mr. Donald Grignani
 Ms. Linda Grimshaw
 Ms. Melinda Grix
 Ms. Mary L. Grossklaus+
 Ms. Carole Gutteridge
 Mr. Joseph Guzzio
 Mr. Jeff Hageman
 Ms. Anne Hagiwara
 Mr. Thomas M. Haley
 Ms. Julie A. Hall+
 Ms. Carolyn Hamilton
 Ms. Lynn A. Hampton
 Dr. Charles D. Hanson
 Ms. Alfreda A. Harris+
 Miss Beverly Harrison+
 Ms. Lois Hartranft+
 Mr. Paul F. Hauth+
 Mrs. Danielle Hawkins
 Mrs. Nancy R. Hawley
 Mrs. Barbara G. Hayes
 Ms. Theresa Haynes+
 Ms. Elanna Haywood
 Ms. Anne M. Heidel+
 Mrs. Lola Helka
 Ms. Ann Helmer
 Ms. Tonya Henderson

Ms. Monica Henson
 Ms. Jan HerrickΔ
 Ms. Trudy Herriman
 Ms. Debra Herring
 Ms. Shelley Hershberger
 Ms. Harriett Hess+
 Mrs. Lisa Hetherington
 Ms. Donna Hewitt
 Mrs. Darlene K. Hicks
 Ms. Helen Hierta
 Ms. Cheryl A. Hill+Δ
 Ms. Julia Hill
 Ms. Melissa S. Hill+
 Mrs. Gloria A. Hines
 Miss Buke Hiziroglu+Δ
 Ms. Eugenia Hoag
 Mrs. Lois D. Hodges+
 Ms. Dora Hoelscher
 Ms. Sandy Hofacker+
 Mrs. Helene Hoffman
 Mr. Shawn Holliday
 Mrs. Sandra Holloway
 Ms. Joy Holmes
 Ms. Judy Hood+
 Ms. Tiffany Hooker+
 Mrs. Linda Hoover
 Ms. Kathi Horton
 Mr. Sidney Horton Jr.
 Mr. Gerald House
 Ms. Judith Hovey
 Mr. Don Howell
 Mr. Larry D. Howell
 Dr. John A. Howland
 Ms. Eileen Howlett
 Ms. Helen R. Hoyt+
 Ms. Christine Hull
 Mr. Levellyn Hunter
 Ms. Teresa Hunter
 Mrs. Gail D. Hutchison
 Mr. Robert J. Irwin
 Mr. Steven Izzo+Δ
 Ms. Heather Jackson
 Miss Esther M. Jacob+
 Miss JoAnn Jacob
 Ms. Mary JacobsΔ
 Mr. Mark Jacobson
 Mrs. Linda Jaworski
 Ms. Sabrina Jensen
 Ms. Samantha Jensen
 Ms. Laurie Jensen-Russell
 Mrs. Rita MacGregor Jeric
 Mr. Robert V. Jewell
 Ms. Renee Jobbitt
 Ms. Patricia Johns+
 Ms. Anna Johnson
 Mrs. Elaine Johnson
 Ms. Judy Johnson
 Mr. Richard G. Johnson+
 Mrs. Wesleyann P. Johnson-Monis
 Ms. Kristina Johnston*
 Ms. Janice Jones
 Mrs. Mary Alice Jones
 Ms. Mollie Jones-Kotula
 Ms. Linda Jumat

Mrs. Kimberly Justice
 Ms. Julie Kaminski
 Mr. Adam Karpinski
 Ms. Rachael Kasperowicz
 Ms. Kaye B. Kaufherr
 Ms. Jane Kelly
 Ms. Susan KellyΔ
 Ms. Brenda Kendall
 Ms. Bridget Kennedy
 Mrs. Joan D. Kenville
 Ms. Donielle Keyes
 Mr. Ari Kinahan
 Mrs. Yolonda Kish
 Mrs. Ellen Kissel+
 Mr. Stephen Kober
 Mr. Blair Koger
 Mrs. Sarah Kohn
 Ms. Karyn Konkell
 Ms. Mary Kosman
 Ms. Rosemary A. Kowalske
 Ms. Charlene A. Kowalski
 Miss Sheryl Kreiner
 Mrs. Linda Krueger
 Mr. Tracy Krumm+
 Mr. David Kummer+
 Mr. James Kummer
 Ms. Janice Landauer+
 Mrs. Michelle Lankton
 Mrs. Spencer Kelly Lanyi+Δ
 Mrs. Marjorie J. LarsenΔ
 Ms. Dorothy Latchana
 Ms. Marie Lauer
 Mr. Adam Lee
 Mr. James T. Legacy
 Mrs. Kathryn Lescelius
 Mr. John Levardsen
 Mrs. Jan LeVasseur
 Ms. Marianne Lewandowski
 Ms. Carol Lewin
 Mrs. Suzanne LewisΔ
 Ms. Diane Lien+
 Mr. Joe Limban+
 Ms. Jennifer Lince
 Mr. Tom Lipinski
 Ms. Teresa A. LittlejohnΔ
 Ms. Sue Lockard
 Mr. James Louis
 Ms. Melody Lumsden
 Ms. Kathy Lundquist+Δ
 Ms. Marcia Luther
 Mr. Doug LynnΔ
 Ms. Ruth Maccourt
 Mr. Igor Macherkevich
 Ms. Giovannina Maio+Δ
 Mr. John Mair III
 Ms. Karen Malcolm
 Ms. Sandy Malnar+
 Dr. Pamela Marin
 Ms. Marjorie Markon+
 Ms. Lucille M. Martel+Δ
 Mrs. Sue Martell+Δ
 Dr. Ronald Massie
 Mrs. Alexis Massimino
 Ms. Deborah Mastin

Ms. Marcia K. Mathews
 Ms. Gina Mattarella
 Ms. Julie Mayes
 Mr. John T. McAlearΔ
 Ms. Rosellen McAlearΔ
 Ms. Kelly McClelland
 Mr. Keith McCombs
 Ms. Susan McCormack
 Mr. Peter McFray
 Ms. Barbara A. McGhan
 Ms. Maly McGuire
 Mr. Philip J. McKeachie
 Ms. Sue McKee
 Ms. Kim McKerracher
 Mr. Jeffrey McLaurin
 Ms. Shelly R. Meisel
 Ms. Susan Melrose
 Mr. Herb Merrell+
 Mr. Gary L. Messenger+Δ
 Mrs. Beatrice A. Messmore
 Ms. Nancy Meszaros
 Ms. Jill Michelle
 Mrs. Linda Midler+Δ
 Ms. Sky Mikinak
 Ms. Theresa Miles
 Ms. Junko Miller+
 Mrs. Patricia Minshall
 Ms. Barbara Mirsky
 Mrs. Donna Misener
 Ms. Erin Mohrman
 Mr. Roy Monko
 Ms. Bethany Mooney+
 Mr. Adam Moore
 Mr. Gerald Moore
 Ms. Kathleen Moore
 Ms. Dee Moreno
 Ms. Marlene MorrisΔ
 Mr. Jeff Mortimer
 Ms. Margaret Mary Mosher
 Ms. Helen Mostek
 Ms. Diane Murphy
 Dr. Martha Murray
 Ms. Esther Music
 Mr. Thomas L. Myers
 Mrs. Glenda Naffziger-Kniss
 Mr. Damon Napier
 Ms. Natalie NapierΔ
 Ms. Michelle Nassar
 Mr. Ulise Nedson+
 Ms. Laurie Negendank
 Mrs. Loretta NevilleΔ
 Ms. Marna Newman
 Ms. Sandra Nicholas
 Ms. Joyce Nichols+
 Ms. Patsy Noffsinger+
 Ms. Dorothy Noonan
 Mr. Rodney Nowosielski
 Ms. Emily O'Boyle
 Ms. Ruth A. O'Connell
 Ms. Mary O'Keefe
 Mr. Brian O'Leary
 Mrs. Marsha L. Ochodnicky+
 Mr. David A. Odom
 Ms. Julie Oparka

Ms. Kim Ott-Gray+Δ
 Ms. Robin Owens
 Ms. Cherie Palmer
 Ms. Jenna Palmer
 Ms. Elizabeth Parker
 Ms. Patricia Parker
 Ms. Roberta Parkhill
 Ms. Susan McCormack
 Mr. Bob Patterson
 Ms. Jo-Ann Pearce
 Mrs. Betty J. Pearson+Δ
 Ms. Lynn Penning
 Ms. Orlene Peresta
 Mrs. Nancy Peske+
 Ms. Kathy Pethers
 Ms. Shelly R. Meisel
 Ms. Susan Melrose
 Mr. Herb Merrell+
 Mr. Gary L. Messenger+Δ
 Mrs. Beatrice A. Messmore
 Ms. Nancy Meszaros
 Ms. Jill Michelle
 Mrs. Linda Midler+Δ
 Ms. Sky Mikinak
 Ms. Theresa Miles
 Ms. Junko Miller+
 Mrs. Patricia Minshall
 Ms. Barbara Mirsky
 Mrs. Donna Misener
 Ms. Erin Mohrman
 Mr. Roy Monko
 Ms. Bethany Mooney+
 Mr. Adam Moore
 Mr. Gerald Moore
 Ms. Kathleen Moore
 Ms. Dee Moreno
 Ms. Marlene MorrisΔ
 Mr. Jeff Mortimer
 Ms. Margaret Mary Mosher
 Ms. Helen Mostek
 Ms. Diane Murphy
 Dr. Martha Murray
 Ms. Esther Music
 Mr. Thomas L. Myers
 Mrs. Glenda Naffziger-Kniss
 Mr. Damon Napier
 Ms. Natalie NapierΔ
 Ms. Michelle Nassar
 Mr. Ulise Nedson+
 Ms. Laurie Negendank
 Mrs. Loretta NevilleΔ
 Ms. Marna Newman
 Ms. Sandra Nicholas
 Ms. Joyce Nichols+
 Ms. Patsy Noffsinger+
 Ms. Dorothy Noonan
 Mr. Rodney Nowosielski
 Ms. Emily O'Boyle
 Ms. Ruth A. O'Connell
 Ms. Mary O'Keefe
 Mr. Brian O'Leary
 Mrs. Marsha L. Ochodnicky+
 Mr. David A. Odom
 Ms. Julie Oparka

Ms. Marcia Sauvie+
 Mrs. Kristine Scarber
 Ms. Reta Schafer
 Mrs. Laurie Schalow
 Miss Jenette Schanick+Δ
 Mrs. Sharon Scharich
 Mrs. Melanie Scheitler
 Mrs. Jane Schepler
 Ms. Mary Scheuer+
 Ms. Karla Schmid
 Ms. Marta Schonfeld
 Mr. Lawrence J. Schuba
 Ms. Linda Schwedt
 Mrs. Marsha Schweikert
 Mrs. Sheila A. Schweinsberg+
 Ms. Jacqueline Scott+Δ
 Mrs. Marilyn Secatch
 Ms. Suzanne M. Sennabaum+
 Ms. Elizabeth Sevic
 Ms. Tracy Shaft
 Mrs. Ruth O. Sharpe+
 Mrs. Hannelore Shattuck
 Ms. Peggy L. Shaw
 Ms. Verna Shook-Dunn
 Ms. Margaret Simen
 Ms. Erika Simpson
 Ms. Courtney Simpson
 Ms. Patricia A. Sincok
 Ms. Karen Sleno
 Mr. & Mrs. Michael Slogor
 Ms. Joan W. Smalley+
 Dr. Ernestine R. Smith+Δ
 Ms. Marci Snyder
 Mrs. Barb Soloko
 Ms. Abrielle Sommers
 Ms. Berna S. Sorscher+
 Ms. Pauline Southworth
 Ms. Susan Sowa+
 Ms. Melody Sowers
 Ms. Shyanne Spence
 Ms. Anita Spencer
 Ms. Susanne Spiegel
 Mrs. Mary Sprague
 Mrs. Debra Spurgeon+
 Mrs. Emma Lou St. Onge
 Mrs. Kathryn Stack
 Mr. Ryan Stahl
 Ms. Carol Stair
 Mrs. Marel L. Staisil
 Ms. Jennifer Standfest
 Mrs. Lois M. Stanley
 Mrs. Hannah Stark
 Ms. Patricia Stark+
 Ms. M. Zoe Starkweather+Δ
 Ms. Peggy Staudacher
 Mr. Donald Steibel
 Mrs. Kelly L. Stein
 Ms. Audrey E. Stephens
 Ms. Emily Stetson
 Mrs. Sally Salay Stevens+
 Ms. Tracey Stewart
 Mr. Paul Stirling+
 Dr. Sally Stommen
 Ms. Sheyenne Stowe

Ms. Sandra Struble
 Ms. Latisha Styles
 Mrs. Elyn Sudow+
 Susan Sullivan+
 Mr. Christopher Summers
 Ms. Karen Sutherland
 Mr. Clifford Sykes
 Ms. Jennifer Taglaver
 Ms. Laurie A. Tata
 Ms. Dorothy S. Taylor+
 Ms. Janet K. Teague
 Mr. Timothy A. Tenbusch
 Ms. Joan Theile
 Mrs. Kathy Theurer
 Mr. Avian Thibault
 Ms. Kelli Thomas
 Ms. Nona Thomas
 Mr. Mick Thompson
 Mr. Sifus Thompson
 Miss Susan M. Thompson
 Mr. Mark Q. Thornton+Δ
 Ms. Lorraine Thorpe
 Ms. Erica Thrash-Sall
 Ms. Jannell Tillman
 Ms. Patrica Tisich
 Mr. Charles Tobias
 Mrs. Lei Tobias+
 Mrs. Debbie Togger
 Ms. Karen Tomlinson
 Mrs. Joan Topham
 Ms. Ashley Toth
 Mr. John Tracy
 Mr. Billy Traylor
 Ms. Alice Tribbs
 Ms. Jane B. Trotter
 Ms. Donna C. Turnage
 Ms. Marilyn Twine
 Ms. June Urdy
 Ms. Rita Valley+
 Ms. Anna VanAmburg
 Ms. Lynn VanAmburg
 Ms. Lorrrie Vandivier
 Mrs. Theresa A. Vann
 Ms. Karyn Vargo
 Mrs. Mary Ann Vergith
 Ms. Rachael Vogt
 Mr. Mark Wagner
 Mrs. Renee Wagner
 Ms. Theresa Wall
 Ms. Brittny Wallace
 Ms. Jane Walworth+Δ
 Rev. Al Wamsley
 Ms. Wanda R. Warby+
 Ms. Anna Wares
 Mr. Christopher Weaver
 Ms. Brenda Wehrli
 Mr. Fred Weiss
 Ms. Laura Weiss
 Ms. Sherri Werschky
 Ms. Michele L. Weston
 Mr. Tim Widener
 Mrs. Michelle Wilkerson
 Ms. Brenda R. Williams*
 Ms. Karmen Williams*

Ms. Jean Willing
 Mrs. Marilyn Willingham
 Ms. Janette A. Wilson
 Mr. Michael Wilson
 Ms. Trudy Winstanley
 Mrs. Susan Wisnudel+
 Mr. Dale F. Wolfram+
 Ms. Eliza Wong
 Ms. Kala Wood
 Ms. Ja-neen Wooten+
 Ms. Heather Wright
 Mrs. Margie Murray Wright
 Ms. Jennifer Wynder
 Ms. Darla S. Wynn+
 Ms. Victoria Ybarra
 Ms. Margaret Yerman
 Mrs. Barbara A. Young
 Mr. Christopher Young+
 Mrs. Karen Zbiciak+
 Miss Kathleen Zeilinger
 Mr. J. Michael Zelley
 Ms. Maryann Zimmer+
 Ms. Marie L. Zuk

Student

(\$20 annually)

Glenn Arens
 Ms. Sheona Baker
 Mr. Brody Bellamy*
 Mr. Brody Bellamy*
 Miss Elle Sophia Blanton
 Miss Nicole Brewer
 Miss Dara Bukoffsky*
 Mr. Bryan Burkhardt
 Mrs. Aisha Changezi
 Miss Basak Durgun
 Nijah Ferguson
 Miss Toryn Fykes
 Miss Emily Harnden
 Ms. Cindy Heilman
 Ms. Judith KalterΔ
 Ms. Shelly Kaye
 Mr. Greg LeMieux
 Miss Maya Lewicky
 Alex Luna
 Miss Mackenzie Naffziger*
 Miss Madelynn Patterson
 Ms. Aria Pierson
 Ms. Rebecca Roteman
 Karsten Sabo
 Miss Marriah Sanchez
 Miss Rebecca Schultz
 Ms. Jenine Smith
 Miss Summer Smith
 Alivia Swank
 Miss Seylor Switzer
 Miss Julianne Taulbee
 Ms. Jessica Teeples
 Ms. Denise Udell
 Ms. Jane Voorheis

Youth

(\$20 annually)

Denisia Barton
 Avery Bates-Kirby

QianHua Bowyer
 Aubrey Bocker
 Lila Bocker
 Ava Dudley
 Olivia Dudley
 Gabrielle Hairston
 Anna Hoinka
 Vivian Iatonna
 Helena Inga
 Grayson Perry
 Cameron Roeser
 Emerson Roeser
 Parker Roeser
 Reed Ross
 Emma Simpson
 Molly Smith
 Addisen Timpf
 Ella Timpf
 Olivia Timpf
 Kate Yaklin
 Sophia Zayac

Financial Statement

Independent Auditor's Report

Board of Directors
 Flint Institute of Arts
 Flint, Michigan

We have audited the accompanying financial statements of Flint Institute of Arts which comprise the statement of financial position as of June 30, 2019, and the related statements of activities, functional expenses, and cash flows for the year then ended, and the related notes to the financial statements.

Management is responsible for the preparation and fair presentation of these financial statements in accordance with accounting principles generally accepted in the United States of America; this includes the design, implementation, and maintenance of internal control relevant to the preparation and fair presentation of financial statements that are free from material misstatement, whether due to fraud or error.

Our responsibility is to express an opinion on these financial statements based on our audit. We conducted our audit in accordance with auditing standards generally accepted in the United States of America. Those standards require that we plan and perform the audit to obtain reasonable assurance about whether the financial statements are free of material misstatement.

An audit involves performing procedures to obtain audit evidence about the amounts and disclosures in the financial statements. The procedures selected depend on the auditors' judgment, including the assessment of the risks of material misstatement of the financial statements, whether due to fraud or error. In making those risk assessments, the auditor considers internal control relevant to the entity's preparation and fair presentation of the financial statements in order to design audit procedures that are appropriate in the circumstances, but not for the purpose of expressing an opinion on the effectiveness of the entity's internal control. Accordingly, we express no such opinion. An audit also includes evaluating the appropriateness of accounting policies used and the reasonableness of significant accounting estimates made by management, as well as evaluating the overall presentation of the financial statements.

We believe that the audit evidence we have obtained is sufficient and appropriate to provide a basis for our audit opinion.

In our opinion, the financial statements referred to above present fairly, in all material respects, the financial position of Flint Institute of Arts as of June 30, 2019, and the changes in its net assets and its cash flows for the year then ended in accordance with accounting principles generally accepted in the United States of America.

As described in Note 1 to the consolidated financial statements, Flint Institute of Arts changed its method of accounting for net assets, investment expense, and functional expenses in 2019 as required by the provisions of FASB Accounting Standards Update 2016-14 Presentation of Financial Statements of Not-for-Profit Entities. Our opinion is not modified with respect to that matter.

We have previously audited Flint Institute of Arts' June 30, 2018, financial statements, and we expressed an unmodified audit opinion on those audited financial statements in our report dated March 20, 2019. In our opinion, the summarized comparative information presented herein as of and for the year ended June 30, 2018 is consistent, in all material respects, with the audited financial statements from which it has been derived.

Our audit was conducted for the purpose of forming an opinion on the financial statements as a whole. The Schedule of Investments is presented for purposes of additional analysis and is not a required part of the financial statements. Such information is the responsibility of management and was derived from and relates directly to the underlying accounting and other records used to prepare the financial statements. The information has been subjected to the auditing procedures applied in the audit of the financial statements and certain additional procedures, including comparing and reconciling such information directly to the underlying accounting and other records used to prepare the financial statements or to the financial statements themselves, and other additional procedures in accordance with auditing standards generally accepted in the United States of America. In our opinion, the information is fairly stated in all material respects in relation to the financial statements as a whole.



4468 Oak Bridge Dr.
 Flint, MI 48532
 810.732.3000
 800.899.4742
 810.732.6118 fax

Yeo & Yeo, P.C.

Flint, Michigan
 March 26, 2020

Statement of Financial Position

June 30, 2019 (with summarized comparative information for 2018)

	Operating Fund	Plant Fund	Project Fund	Permanent Collection Fund	Endowment Fund	Total All Funds	
						2019	2018
Assets							
Current assets							
Cash and cash equivalents	\$ 2,126,698	\$ -	\$ -	\$ -	\$ -	\$ 2,126,698	\$ 708,910
Accounts receivable	122,627	-	-	-	-	122,627	96,075
Contributions receivable	-	-	216,668	-	95,000	311,668	404,043
Inventory	123,537	-	-	-	-	123,537	105,860
Prepaid expenses	101,487	-	-	-	-	101,487	86,625
Due from other funds	-	-	-	-	-	-	80,000
Total current assets	2,474,349	-	216,668	-	95,000	2,786,017	1,481,513
Long-term assets							
Fixed assets	-	23,490,843	-	-	-	23,490,843	24,021,199
Intangible asset	-	25,000	-	-	-	25,000	25,000
Permanent collection	-	-	-	1	-	1	1
Interest in income trusts	-	-	-	-	1	1	1
Trusts held by third party	-	-	-	-	2,001,776	2,001,776	2,005,892
Investments	487,031	-	-	580,844	26,504,008	27,571,883	27,545,939
Total long-term assets	487,031	23,515,843	-	580,845	28,505,785	53,089,504	53,598,032
Total assets	\$ 2,961,380	\$ 23,515,843	\$ 216,668	\$ 580,845	\$ 28,600,785	\$ 55,875,521	\$ 55,079,545
Liabilities and Net Assets							
Liabilities							
Current liabilities							
Accounts payable	\$ 45,826	\$ -	\$ -	\$ 20,000	\$ -	\$ 65,826	\$ 112,255
Accrued expenses and withheld taxes	118,863	-	-	-	-	118,863	90,758
Due to other funds	-	-	-	-	-	-	80,000
Capital lease obligation, current portion	-	7,162	-	-	-	7,162	-
Deferred revenue	37,419	-	-	-	-	37,419	27,467
Total current liabilities	202,108	7,162	-	20,000	-	229,270	310,480
Long-term liabilities							
Capital lease obligation, net of current portion	-	22,082	-	-	-	22,082	-
Total liabilities	202,108	29,244	-	20,000	-	251,352	310,480
Net Assets							
Without donor restrictions							
Undesignated	2,759,272	-	-	-	14,042,206	16,801,478	15,118,380
Invested in fixed and intangible assets, net of related debt	-	23,486,599	-	-	-	23,486,599	24,046,199
Total without donor restrictions	2,759,272	23,486,599	-	-	14,042,206	40,288,077	39,164,579
With donor restrictions							
Perpetual in nature	-	-	-	-	11,901,100	11,901,100	11,834,654
Purpose restrictions	-	-	-	560,845	2,562,479	3,123,324	3,365,789
Time-restricted for future periods and specific purposes	-	-	216,668	-	95,000	311,668	404,043
Total with donor restrictions	-	-	216,668	560,845	14,558,579	15,336,092	15,604,486
Total Net Assets	2,759,272	23,486,599	216,668	560,845	28,600,785	55,624,169	54,769,065
Total Liabilities and Net Assets	\$ 2,961,380	\$ 23,515,843	\$ 216,668	\$ 580,845	\$ 28,600,785	\$ 55,875,521	\$ 55,079,545

Statement of Activities

June 30, 2019 (with summarized comparative information for 2018)

	Without Donor Restrictions	Without Donor Restrictions	With Donor Restrictions	With Donor Restrictions	With Donor Restrictions	Without Donor Restrictions	With Donor Restrictions	Total All Funds
	Operating Fund	Plant Fund	Project Fund	Permanent Collection Fund	Endowment Fund	2019	2018	
Revenues, Gains, and Other Support								
Public support								
Contributions	\$ 2,801,651	\$ 39,500	\$ -	\$ 215,000	\$ 39,685	\$ -	\$ 1,258,170	\$ 4,354,006
Property tax income	1,664,832	-	-	-	-	-	-	1,664,832
Bray and Pierson trust distributions	84,607	-	-	-	-	-	-	84,607
Community Foundation trust distributions	458,880	-	-	-	36,354	-	-	495,234
Total public support	5,009,970	39,500	-	215,000	76,039	-	1,258,170	6,598,679
Revenue								
Museum shop and cafe sales	230,086	-	-	-	-	-	-	230,086
Cost of goods sold	(123,930)	-	-	-	-	-	-	(123,930)
Gross profit	106,156	-	-	-	-	-	-	106,156
Memberships	275,727	-	-	-	-	-	-	275,727
Tuition	347,628	-	-	-	-	-	-	347,628
Ticket sales	60,151	-	-	-	-	-	-	60,151
Investment income	8,901	-	-	-	21,565	-	520,351	550,817
Net realized gain on investments	4,522	-	-	-	-	-	1,048,022	1,052,544
Miscellaneous income	281,248	-	-	-	-	-	-	281,248
Total revenue	1,084,333	-	-	-	21,565	-	1,568,373	2,674,271
Total public support and revenue	6,094,303	39,500	-	215,000	97,604	-	2,826,543	9,272,950

Board, Staff & Faculty

Board of Trustees

Thomas J. Mitchell, *President*
 Elizabeth S. Murphy, *First Vice-President*
 Mark L. Lippincott, *Second Vice-President*
 Kathryn C. Boles, *Secretary*
 Martha Sanford, *Treasurer*
 Dean Yeotis, *Immediate Past President*
 Eleanor E. Brownell
 Ann K. Chan
 James D. Draper, *Founders Society President*
 Mona Hardas
 Carol Hurand
 Raymond J. Kelly III
 Jimmy King
 Alan Klein
 Jamile Trueba Lawand
 Eureka McCormick
 William H. Moeller
 Jay N. Nelson
 Karl A. Olmstead
 Brenda Rogers-Grays
 Michael Rucks
 Ira A. Rutherford
 Mary Coe Ryan
 Patricia Spangler
 Theresa A. Stephens-Lock
 Tiffany Stolzenfeld
 Lynne A. Taft-Draper, *Friends of Modern Art President*
 Jan Werschky
 Shannon Easter White

Honorary Trustee

Elizabeth Neithercut

Staff & Art School Faculty

John Henry, *Executive Director*
 Guy Adamec, *Art School Instructor*
 Gerald Alcorn, *Security*
 Jim Ames, *Art School Instructor*
 Rebecca Andrus, *Art School Instructor*
 Jarreen Ankton, *Security*
 Andrea Ashmore, *Visitor Services Manager*
 Valerie Bailie, *Membership Coordinator*
 Eric Birkle, *Curatorial Intern*
 David Booth, *Security*
 Sara Bostwick, *Café Manager*
 Ed Bradley, *Associate Curator of Film*
 Jessica Brown, *Art Educator*
 Kaitlin Brown, *Café Assistant*
 Ross Brown, *Security*
 Tammi Browning, *Art Educator*
 Kenny Burress, *Visitor Services Manager*
 Nicholas Carlton, *Security*
 Diana Castor-Munoz, *Visitor Services Manager*
 Tom Cheek, *IT Specialist*
 Bryan Chirstie, *Facilities Manager*
 Megan Church, *Education Programs Coordinator*

Justin Clanton, *Facilities Assistant*
 Teya Current, *Café Assistant*
 Bethany Davis, *Café Assistant*
 Monique Desormeau, *Curator of Education*
 Marissa Ditri, *Visitor Services*
 Sarah Drummond, *Facilities Assistant*
 Alla Dubrovich, *Art School Instructor*
 Michelle Dummer, *Assistant Curator of Education*
 Jennifer Edgington, *Art Educator*
 Pamela Ehde, *Early Childhood Educator*
 Donovan Entrekin, *Director of the Art School*
 Benjamin Ewing, *Glass Technician*
 William Farmer, *Security*
 Craig Fenner, *AV Technician*
 Spencer Ferro, *Art School Instructor*
 Alice Foster-Stocum, *Art School Instructor*
 Rodney Fulcher, *Security*
 Esther Garrison, *Security*
 Benjamin Gaskill, *Café Assistant*
 Kimberly Giacchina, *Visitor Services*
 Autumn Gilbert, *Café Assistant*
 Anthony Gittens, *Security*
 Tracee Glab, *Curator of Collections & Exhibitions*
 James Gould, *Art School Instructor*
 Justine Grant, *Visitor Services*
 Rebecca Gray, *Art School Instructor*
 ShaRhonda Green, *Art Educator*
 Jeffrey Hageman, *Art School Instructor*
 Allen Hamlett, *Security*
 Kara Harris, *Café Assistant*
 Paul Hauth, *Art School Instructor*
 Lola Helka, *Education Assistant*
 Tonya Henderson, *Art School Instructor*
 Jennifer Hickmott, *Education Programs Coordinator*
 Julia Hill, *Security*
 Craig Hinshaw, *Art School Instructor*
 Barbara Holmer, *Art School Instructor*
 Chelsea Horton, *Early Childhood Educator*
 Donald Howell, *Facilities Assistant*
 Richard Huron, *Facilities Assistant*
 Heather Jackson, *Assistant Registrar*
 Judy Johnson, *Librarian*
 Kimberly Justice, *Assistant Retail Manager*
 Matthew Knuth, *Café Manager*
 Sarah Kohn, *Assistant Curator*
 Karyn Konkell, *Art School Instructor*
 Chene Koppitz, *Communications & Marketing Coordinator*
 Miles Lam, *Graphic Design*
 Michelene LaTurneau, *Security*
 James Louis, *Security*
 Igor Macherkevich, *Art School Instructor*
 Elizabeth Mamola, *Retail Clerk*
 Kathrine Martin, *Visitor Services*
 Alexis Massimino, *Art School Assistant*
 Donald McCombs, *Security*
 Jeffrey McLaurin, *Facilities Assistant*
 Michael Melenbrink, *Director of Finance & Administration*
 Mike Mentz, *Glass Programs Assistant*
 Logan Miller, *Café Assistant*
 Maria Morris, *Security*
 Lori Motley, *Assistant to the Executive Director*
 Sarah Mullane, *Director of Member & Guest Relations*
 Bryan Nichols, *Facilities Assistant*

Nicolle Noel, *Art Educator*
 Emily O'Boyle, *Education Media Coordinator*
 Brian O'Leary, *Security*
 Matthew Osmon, *Art School Instructor*
 Peter Ott, *Registrar*
 Grace Phillips, *Art School Assistant*
 D'Angelo Philpots, *Café Assistant*
 Marissa Pierce, *Public & Community Relations Coordinator*
 Cory Potter, *Retail Manager*
 Rachel Reynolds Z, *Art School Instructor*
 Mark Robichaud, *Facilities Assistant*
 Natalie Robinson, *Security*
 Andrea Rodgers, *Early Childhood Educator*
 Phillip Ruehle, *Art School Instructor*
 Barry Russell, *Security*
 Taylor Sampson, *Retail Clerk*
 Marquis Sanders, *Security*
 Gary Schwartz, *Art School Instructor*
 Elizabeth Sevick, *Visitor Services & Art School Instructor*
 Hillary Sewell, *Café Assistant*
 Kathryn Sharbaugh, *Director of Development*
 Courtney Simpson, *Art School Instructor*
 Lauren Simpson, *Security*
 Erica Simpson, *Visitor Services*
 Arla Slogor, *Art School Instructor*
 Anita Spencer, *Art School Instructor*
 Hannah Stark, *Assistant to Art School Director*
 Emily Stetson, *Assistant Events Coordinator*
 Tracey Stewart, *Development Officer*
 Ellyn Sudow, *Art School Instructor*
 Karen Sutherland, *Art School Instructor*
 Brent Swanson, *Glass Programs Manager*
 Ashley Toth, *Special Events Coordinator*
 Billy Traylor, *Security*
 Jane Trotter, *Art School Instructor*
 Vicki Vanfleet, *Visitor Services*
 Rachael Vogt, *Curatorial Assistant*
 Anna Wares, *Facilities Assistant*
 Kathleen Weiss, *Security*
 Yolanda West, *Visitor Services*
 Timothy Widener, *Art School Instructor*
 Diabe Willey, *Security*
 Michael Wilson, *Security Supervisor*
 Kala Wood, *Membership Assistant*
 Heather Wright, *Digital Media Specialist*

