



Contents

president's & executive director's report	4
exhibitions	5–6
films	7–8
videos	9
acquisitions	10–14
loans	15–16
publications	17
education	18
art school	19–20
development	21–22
special events & facility rentals	23–25
auxiliary groups	26–27
financial statement	28–30
contributions	31–34
membership	35–42
board, staff, & faculty	43



1120 E. Kearsley St.
Flint, MI 48503
810.234.1695 phone
810.234.1692 fax
www.flintarts.org

cover image

David Driskell

American, 1931–2020

Mask Series II, 2019

Woodcut and digital print on paper

15 × 11 inches

Museum purchase with funds from the
Collection Endowment, 2020.46

About the Flint Institute of Arts

Incorporated in 1928, the FIA is a privately supported, non-profit organization. It is one of Michigan's most significant cultural and educational resources, serving people of all ages and interests.

The Institute is supported entirely through memberships, sales, rentals, admissions, tuitions, contributions from individuals and businesses, earned income from endowments, county millage funds, and grants from trusts, government, and foundations.

The Institute's collections and temporary exhibitions are open daily (except national holidays). Art classes for adults and children, lectures, films, tours, and other special events are also offered as an integral part of the Institute's educational mission.

The Flint Institute of Arts is tax-exempt under Section 501 (c) (3).

Mission

To advance the understanding and appreciation of art for all through collections, exhibitions, and educational programs.

The FIA is a non-profit, equal opportunity employer, and provides programs and services without regard to race, color, religion, national origin, age, gender identity, or disability.



FIA operations are funded in part by the Genesee County Arts Education and Cultural Enrichment Millage funds. Your tax dollars at work.



Operating support for the Flint Institute of Arts is provided in part by the Charles Stewart Mott Foundation.



FIA exhibitions and programs are made possible in part with the support of the Michigan Council for Arts and Cultural Affairs, a partner agency of the National Endowment for the Arts.



President's & Executive Director's Report

The 2019-20 fiscal year at the FIA was off to a great start with an amazing first half; then the unimaginable happened—the FIA closed its doors on March 13 in response to the COVID-19 pandemic.

Despite the devastation to our economy, we ended the year in the black, and we are extremely grateful to our many, many donors for their financial support. We would also like to thank our dedicated volunteer groups, including the FIA Board of Trustees and at-large committee members, for their collective judgment and commitment which were so essential especially during those uncertain times that took us out of our routine.

Each department of the FIA formulated and implemented plans to stay engaged and move the FIA forward in whatever way they could. Zoom committee meetings were held in order to stay on task with policies and financial issues, and safety procedures and protocols were crafted in preparation for reopening.

Even so, during the 2019-20 fiscal year beginning July 1, the FIA raised a \$6.4 million budget, encountered 116,000 visitors and registered 2,249 members. The Art School enrolled a total of 1,897 students, only slightly down from 2,024 and had been trending toward a record number of enrollments. They still recorded an impressive 11,486 encounters. Through the Education Department's adult programs, college programs, family programs, and the K-12, homeschool, and early childhood programs, we reached 41,145 children and adults in person and virtually.

Digital media efforts and online offerings became more important than ever resulting in 82,593 users on our website; 350,739 page views; and over two million views on Facebook. A large part of our digital footprint was due to the *FIA@Home*, a new initiative that was launched in an effort to reach our audience virtually and engage members and visitors while our physical facility was closed during Governor Whitmer's Stay-at-Home order. It proved to be so successful that we continued its weekly publication even after we reopened to the public.

Facility rentals and partnerships were hard hit by the shutdown, but through the beginning of March, we were able to engage 10,300 visitors. Although Wine Tasting and The PARTY fell victim to the virus and were canceled, Art on Tap and the Community Gala, held in October and January respectively, were great successes.

The Curatorial Department stayed busy, processing 217 new gifts and 21 purchases to add to the collection. The staff researched and wrote hundreds of labels, completed one exhibition catalogue as well as the design and installation of 14 gallery exhibitions including the blockbuster *Isabelle de Borchgrave: Fashioning Art from Paper*; all together drawing 46,000 visitors to the galleries before the shutdown.

This year, the Friends of Modern Art volunteers continued to sponsor the ever-popular film series which began after Labor Day but only made it through mid-March with the remaining season being canceled along with the 53rd Annual Flint Art Fair. FOMA also fully funded the *Beauty and Pain: Photographs by Nathalia Edenmont* exhibition catalogue and contributed significantly toward the *Alexis Rockman: The Great Lakes Cycle* exhibition.

The Founders Society volunteers, once again, raised funds to support FIA programs through their annual First Frost event and this year sponsored the Library, exhibitions in the Graphics Gallery, and Philip Haas' popular *Four Seasons* exhibition.

Lastly, it is with pride and admiration that we express our deepest appreciation to our highly skilled and seemingly tireless staff. Their ability to turn their knowledge and creativity into all that's tangible at the FIA was, as always, second to none.



Elizabeth S. Murphy
President



John B. Henry
Executive Director

Exhibitions

What started out as a normal fiscal year for exhibitions ended with several schedule changes, including early closings, postponements, and extended dates. Despite the three-and-a-half month closure, the FIA was able to reopen in July with five exhibitions and 119 new works on view. In total, the Flint Institute of Arts presented 14 unique exhibitions that gave visitors the opportunity to experience 399 works of art by 251 different artists that explored a variety of artistic styles and themes.

Beginning the fiscal year, *Still Modern* opened in the Graphics Gallery and featured modern and contemporary works on paper that depict still lifes. *Isabelle de Borchgrave: Fashioning Art from Paper* in the Hodge and Henry Galleries presented 95 life-sized *trompe l'oeil* (French for “deceive the eye”) paper costumes and accessories by Belgian artist Isabelle de Borchgrave, providing a retrospective view of the artist’s sculptures. Dennita Sewell, Dorrance Curator of Fashion Design at the Phoenix Art Museum, gave a topical lecture at the exhibition opening, and the artist visited the FIA at the close of the exhibition for a special “Au Revoir Soirée” event that included a presentation and book signing by de Borchgrave.

The first of its kind at the FIA, *From the Flame: Juried Flamework* exhibition included 32 jury-selected objects in the Harris-Burger Gallery. A local glass artist acted as the judge, choosing first through third place, which were awarded monetary prizes. First place was awarded to Zac Weinberg, followed by Eunsuh Choi and Janis Miltenberger. In addition, more than 2,000 visitors cast their vote for a People’s Choice Award given to Eunsuh Choi. Goblets by Eric Goldschmidt and Eusheen Goines were awarded the Purchase Prize and are now part of the permanent collection.

In July, *Philip Haas: The Four Seasons* transformed the Hurand Sculpture Courtyard with four 15-foot-tall sculptures created as an homage to the Italian Renaissance painter Giuseppe Arcimboldo, who painted a series of the same name in the 16th century. A “Day at the Museum” was held where visitors were able to view the courtyard installation, tour the exhibitions on view, participate in a Q&A with a conservator working on the *Rinaldo and Armida* tapestries in the Bray Gallery, and view a film directed by Philip Haas, with a subsequent Q&A. Later that month, *Cut & Paste: The Art of Collage* highlighted works on paper that feature some element of collage in the Graphics Gallery.

In the fall, *Visions of American Life: Paintings from the Manoogian Collection, 1850–1940* included landscapes, still-lives, and portraits by American artists in the Hodge Gallery. The works offered a glimpse into American life during this period, allowing viewers to reflect on a time past. Benjamin Colman, Associate Curator of American Art at the Detroit Institute of Arts, gave a lecture related to the exhibition, deciphering the different ways artists presented their vision of American life. In the adjoining Henry Gallery, *Industry* featured paintings focused on the development of industry in the United States during the 19th and 20th centuries. The artworks in the exhibition reflected artists’ reactions to the rapid industrial changes of the time.

In October, the Graphics Gallery featured recent gifts from collectors Myron and Barbara Levine in an exhibition titled *Harmony in Expression: The Myron and Barbara Levine Print Collection*. Many artists in the exhibition were part of COBrA, a group of 20th-century artists interested in automatism and the exploration of color and form. In the Harris-Burger Gallery, *Double Take* featured artworks that were created with tribute to the tradition of *trompe l'oeil*—with each object looking like a material other than the actual one used.

Useful and Beautiful: Decorative Arts Highlights opened in the Ann K. Walch-Chan Decorative Arts Gallery in November, the exhibition explored the diversity of decorative arts from a range of time periods and geographic locations. Concurrently in the decorative arts corridor, *Postscript* featured 60 important paperweights by Pantin, Baccarat, and Clichy, as well as weights by contemporary artists, from a private collector.

In 2020, *Wonderfully Made: The Artis Collection of African American Art* in the Graphics Gallery highlighted works on loan from local collectors Anthony J. and Davida J. Artis. The exhibition focused on artworks from their collection that are meant to educate, encourage, and engage the community. In the Hodge and Henry Galleries, *Community* featured artworks from the FIA’s permanent collection by African American artists, premiering on the night of the 13th annual Community Gala with a special lecture by Dr. Kelli Morgan. Flint Poet Laureate Semaj Brown was commissioned to write two poems based on artworks in the exhibition, which she performed the day of the public opening. A special feature of this exhibition was the opportunity for visitors to vote for one of three artworks on loan to be purchased for the permanent collection with funds raised by the Community Gala. More than 1,500 visitors cast their vote, selecting *The Gift of Lineage #5* by Stephen Towns.

Right before the closure due to COVID-19 in March, *Monumental: The Art of Viola Frey* was prepared to open in the Harris-Burger Gallery, and included drawings, glass, and ceramics from the last fifteen years of the artist Viola Frey’s life. The exhibition featured her most monumental work, a ceramic sculpture that spans more than 16 feet. The lenders to the exhibition agreed to extend the exhibition from July to October.



Isabelle de Borchgrave: *Fashioning Art from Paper* Members Preview.

4.20.19 – 7.14.19

Still Modern

Sponsored by Friends of Modern Art

6.15.19 – 9.8.19

Isabelle de Borchgrave: Fashioning Art from Paper

Major funding provided by FedEx

6.29.19 – 10.6.19

From the Flame: Juried Flamework

Prizes courtesy of Security Credit Union

7.5.19 – 11.17.19

Philip Haas: The Four Seasons

Sponsored by the Founders Society and Susie’s Hope Fund

7.20.19 – 10.13.19

Cut & Paste: The Art of Collage

Sponsored by the Founders Society

10.5.19 – 12.30.19

Visions of American Life: Paintings from the Manoogian Collection, 1850–1940

10.5.19 – 12.30.19

Industry

10.19.19 – 1.12.20

Harmony in Expression: The Myron and Barbara Levine Print Collection

Sponsored by Founders Society

10.26.19 – 2.23.20

Double Take

11.16.19 – 7.26.20

Useful and Beautiful: Decorative Arts Highlights

11.16.19 – 9.13.20

Postscript

1.18.20 – 4.11.20**

Wonderfully Made: The Artis Collection of African American Art

Sponsored by Founders Society

1.26.20 – 4.19.20**

Community

3.14.20* – 10.25.20

Monumental: The Art of Viola Frey

* opened on July 6 due to COVID-19

** closed early on March 14 due to COVID-19

Films

The FIA Film Program is intended to offer motion pictures that appeal to a diverse audience in the local community. The program is comprised primarily of a weekly schedule of film series and festivals in the FIA Theater. The main series, sponsored by the Friends of Modern Art and held mainly on Fridays, Saturdays, and Sundays, accounted for 31 titles over 26 weeks from September 2019 until the season was cut short by the COVID-19 outbreak in March 2020.

A total of 5,167 patrons over 29 weeks attended all film-related FIA events in 2019-20. The FIA Film Society continued for its 12th year to enable members to take a stronger interest in the program.

Among the movies shown at FIA in 2019-20 were *Parasite*, the Academy Award winner for best picture of 2019; *Jojo Rabbit*, a best picture Oscar nominee; the acclaimed documentaries *Toni Morrison: The Pieces I Am*, *Fiddler: A Miracle of Miracles* and *Framing John DeLorean*; and dramas *Tolkien* and *The White Crow*. Other potentially popular selections such as the annual Academy Award Nominated Shorts programs and the Oscar-nominated films *Honeyland* and *Pain and Glory* were booked but could not be shown because of the shortened season.

In addition to the FOMA-funded titles, the FIA partnered with the Flint Jewish Federation for the 16th annual Karen Schneider Jewish Film Festival of Flint and with the local nonprofit Communities First for the fifth season of a four-title series of African American-themed films. However, the Jewish festival had to be limited to virtual screenings after the theater was closed.

The museum also showed a weekly series of classic movies about fashion and fashion figures in July and August 2019. Among the six titles were *Funny Face*, *Iris*, *Blow-Up*, and *Zoolander*.

Film Program

The FIA Theater screened these films in the main Friends of Modern Art series:

September

Tolkien
Destroyer
The Souvenir
Framing John DeLorean
All Is True

October

The White Crow
Give Me Liberty
Anthropocene: The Human Epoch
After the Wedding
Ophelia
Midsummer

November

Sword of Trust
The Last Black Man in San Francisco
Long Day's Journey Into Night
Wild Rose
The Fall of the American Empire

December

Official Secrets
The Farewell
Echo in the Valley

January

Cold Case Hammarskjöld
Parasite
Cyrano, My Love
David Crosby: Remember My Name
Linda Ronstadt: The Sound of My Voice
The Nightingale

February

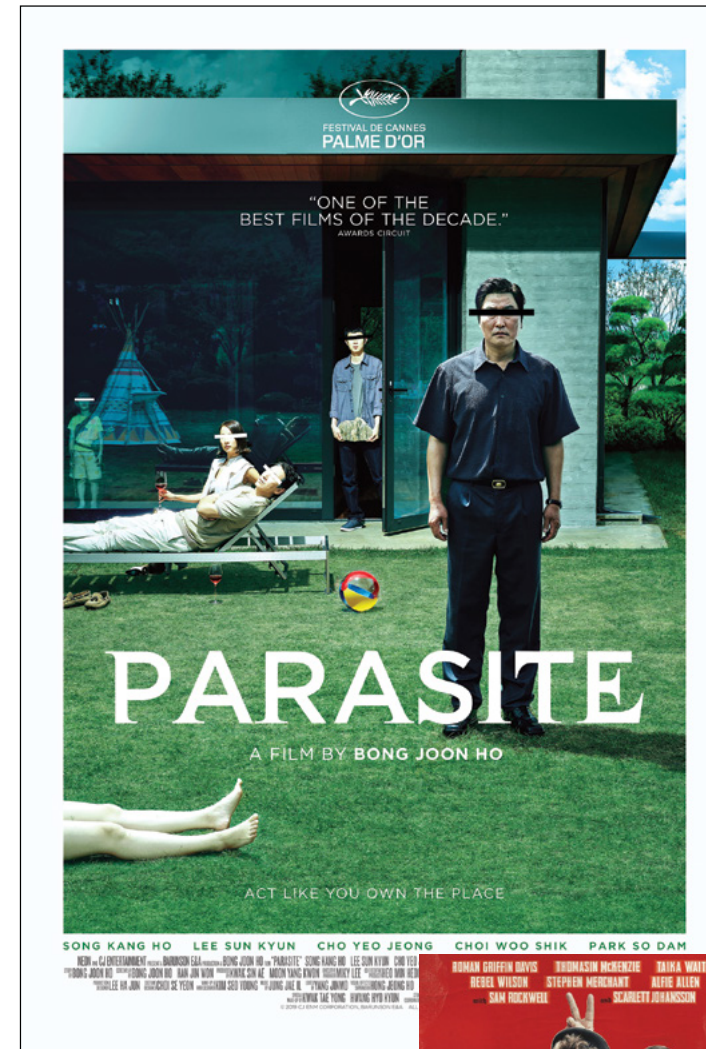
Toni Morrison: The Pieces I Am
Luce
Fiddler: A Miracle of Miracles
The Day Shall Come
The Warrior Queen of Jhansi

March

Jojo Rabbit

FOMA Film series was sponsored by:

Friends of Modern Art
Guardian Alarm
Merrill Lynch
Michigan Public Radio



Special Events

July 5, 12, 19 & August 2, 16, 30

Late Night Fashion Series

Screened were *Fresh Dressed*, *Funny Face*, *Mahogany*, *Iris*, *Zoolander*, and *Blow-Up*. 64 people attended in all.

July 25

Flint Youth Film Festival

Screening of films and awards ceremony. 100 people attended in all.

August 27

FIA Film Society Preview

FIA Associate Curator of Film Ed Bradley and FOMA Film Committee Chairman Michael Rucks presented a preview of the Friends of Modern Art series, with film clips. 145 people attended.

November 14, December 5, January 9, February 13

African American Film Series

Screened were *Toni Morrison: The Pieces I Am*, *Without a Net: The Digital Divide*, *A Ballerina's Tale* and *Mr. Church*. 555 attended in all.

June-July

Karen Schneider Jewish Film Festival of Flint

In the 16th annual local event—a spinoff of the Detroit-based Lenore Marwil Jewish Film Festival—two feature-length films, *Crescendo* and *The Tobacconist*, were shown in virtual screenings. A Q&A with director Dror Zahavi accompanied *Crescendo*.

Film Society

The 2019-20 season marked the 12th season of the FIA Film Society, a group intended to increase interest in, and funding for, the film program.

By season's end, the society included 79 members and sponsors. Most of the members were at the basic membership level of \$100, which granted the donor 36 tickets to FOMA films, listings in the FIA Members Magazine and Annual Report, and access to monthly e-mailed newsletters about upcoming movies.

Higher sponsorship levels gained donors listings on screen before each film presentation, extra tickets and a presence on the FIA website.

Media Arts Videos

Media Art encompasses artworks that were created through the use of technology and new media (which includes interactive and immersive art, computer animation, video games, and more.) This fiscal year the gallery presented artworks from artists who's nationalities include American, Spanish, Serbian, Italian, and Russian.

Each year, the FIA features 12 contemporary video artworks in the Media Arts Gallery. This year, due to the pandemic, eight videos were shown, touching on multiple themes including colonialism, identity, and consumption. The Media Arts gallery is ideally suited for single-channel videos, played on a continuous loop, and projected onto a 5x7 foot screen, as well as small video installations.



Sarah Meyohas
French-American, b. 1991
Generated Petals
Interpolation, 2018
Courtesy of the artist and
Wasserman Projects, Detroit

7.1.19 – 7.31.19
Flint Youth Film Festival
Flint Youth Media Project, 2019

8.1.19 – 9.30.19
Generated Petals
Interpolation
Sarah Meyohas, 2018
Made possible by Flint Glass

10.1.19 – 10.31.19
In Ictu Oculi
Greta Alfaro, 2009

11.1.19 – 11.30.19
SSS
Marina Abramovic and Charles
Atlas, 1989

12.1.19 – 12.30.19
Mapping
Asya Reznikov, 2007

1.2.20 – 1.31.20
All Things Being Equal
Sam Jury, 2009

2.1.20 – 2.29.20
Red Sourcebook
Ilana Harris-Babou, 2018

3.1.20 – 3.31.20*
Soot
Erin Pollock, 2019

*closed early on March 14 due to
COVID-19

Acquisitions

The Flint Institute of Arts' permanent collection is a resource for creating exhibitions and developing educational programs for a diverse public, including scholars and students.

The growth of the collection is supported by gifts from civic-minded individuals who donate funds or works of art to the permanent collection. In addition, the Curatorial Department and the Collections Committee work together to identify strategies and seek new funds for the acquisition of artworks that meet museum objectives and the expectations of an ever inquisitive and knowledgeable public. The staff conducts work essential to the care and management of the collection, including research, documentation, preservation, conservation, presentation, and interpretation.

Hannelore Baron
American, born Germany, 1926–1987
Collection of 39 mixed media assemblages
Dimensions vary
Gift of Mary Mhoon, 2019.14–52

Hannelore Baron
American, born Germany, 1926–1987
Collection of 27 mixed media works on paper
Dimensions vary
Gift of Mary Mhoon, 2019.53–79

Elliott Todd
American, born 1990
Pyramid, 2016
Glass
24 × 24 × 24 inches
Gift of Elliott Todd, 2019.80

Elliott Todd
American, born 1990
Queen Anne Footstool, 2018
Glass
16 × 13 × 9 inches
Gift of Elliott Todd, 2019.81

Daniel Salazar
American, born 1956
Magnum Weight, n.d.
Glass
2½ × 5 diameter inches
Gift of Daniel Salazar, 2019.82

Käthe Kollwitz
German, 1867–1945
Sharpening the Scythe, 1921, from the series Peasants' War, published 1963 and 1972 with von der Becke's Munich embossed seal
Etching, drypoint, aquatint on paper
Image: 11¾ × 11¾ inches
Gift of Sharon Y. Naughton, 2019.83

Ed Fraga
American, born 1956
St. Martin in the Fields, 2003
Oil on wood
12 × 18 × 2½ inches
Gift of the artist, 2019.84

Eric Goldschmidt
American, born 1972
Eusheen Goines
American, born 1979
Filla-stem Goblet, 2018
Glass
12 × 3 inches
Purchase prize from the exhibition *From the Flame*, with funds donated by Security Credit Union, 2019.85

Eric Goldschmidt
American, born 1972
Mike Mason
American, born 1980
Galaxy Goblet, 2018
Glass
12 × 3 inches
Purchase prize from the exhibition *From the Flame*, with funds donated by Security Credit Union, 2019.86

Lundberg Studios
American, founded 1970
Scrambled Vines Weight, 2000
Glass
2 × 3 diameter inches
Museum purchase with funds from the Parsely Krellein Bravo Fund, 2019.87

Judy Bowman
American, born 1952
Mary Don't You Weep, 2015
Archival pigment print on paper with jewels
35 × 22 inches
Museum purchase with funds from the Collection Endowment, 2019.217

Betye Saar
American, born 1926
Mother Catherine (from Bookmarks in the Pages of Life), 2000
Silkscreen on paper
14½ × 11¼ inches
Museum purchase with funds from the Collection Endowment, 2019.218



Albert-Émile Artigue
Argentinean, 1850–1927
Spring Flowers, 1897
Oil on panel
39 × 51 inches
Gift of Randolph P. Piper in memory and honor of all the girls and women in his life, 2019.88

Hunt Slonem
American, born 1951
Bunny Wall (128 paintings), 2009–2013
Oil on wood in found frames
Approx. 108 × 240 inches
Gift of Henry and Pat Shane 2019.89–2019.216

Hubert Massey
American, born 1958
Blue, 2019
Linocut on paper
23¾ × 17½ inches
Museum purchase with funds from the Collection Endowment, 2019.219

Michael Gallagher
American, 1898–1965
Last Shift, 1937
Lithograph on paper
8 × 10⅝ inches
Museum purchase with funds from the Collection Endowment, 2019.220

Salvatore Pinto

American, born Italy, 1905–1966
Mills, ca. 1937
 Wood engraving on paper
 7 × 10 inches
 Museum purchase with funds
 from the Collection Endowment,
 2019.221

Edward Paschke

American, 1939–2004
Trabajo, 1993
 Lithograph on paper
 17¹/₂ × 23³/₄ inches
 Museum purchase with funds
 from the Collection Endowment,
 2019.222

Jeanette Pasin Sloan

American, born 1946
Trine, 2019
 Archival pigment print on paper
 30 × 22 inches
 Museum purchase with funds
 from the Collection Endowment,
 2019.223

Neal Ambrose-Smith

American, born 1966
Fish Dreams, 2019
 Graphite, watercolor and acrylic
 on paper
 30 × 22 inches
 Museum purchase with funds
 from the Collection Endowment,
 2019.224

Irving Amen

American, 1918–2001
Poet, n.d.
 Woodcut on paper
 12 × 8¹/₂ inches
 Gift of Edith and Julius Gutow,
 2019.225

Herbert Bayer

Austrian-American, 1900–1987
Untitled, n.d.
 Screenprint on paper
 30 × 30 inches
 Gift of Edith and Julius Gutow,
 2019.226

Van Elliott

American, 1924–2002
Spirituals, 1965
 Etching and aquatint on paper
 7³/₄ × 12 inches
 Gift of Edith and Julius Gutow,
 2019.227

Adolph Gottlieb

American, 1903–1974
Black Field, 1972
 Screenprint on paper
 24 × 17³/₄ inches
 Gift of Edith and Julius Gutow,
 2019.228

Adolph Gottlieb

American, 1903–1974
Pink Ground, 1972
 Screenprint on paper
 24 × 17³/₄ inches
 Gift of Edith and Julius Gutow,
 2019.229

Stanley William Hayter

English, 1901–1988
Meduse, 1958
 High viscosity etching and
 engraving on paper
 11³/₄ × 14¹/₂ inches
 Gift of Edith and Julius Gutow,
 2019.230

Hannah Hoch

German, 1889–1978
Untitled, ca. 1969
 Linocut on Japanese paper
 18¹/₄ × 16³/₄ inches
 Gift of Edith and Julius Gutow,
 2019.231

Najjar-Bariumian Hratchya

Syrian, born 1939
Untitled, n.d.
 Etching on paper
 9³/₄ × 7¹/₄ inches
 Gift of Edith and Julius Gutow,
 2019.232

Friedensreich Hundertwasser

New Zealander, born Austria,
 1928–2000

Columbus Rainy Day in India

from the Regentag Portfolio,
 1971–1972
 Serigraph on paper, varnished in
 parts, with metal imprints
 17⁷/₈ × 22¹/₄ inches
 Gift of Edith and Julius Gutow,
 2019.233

Friedensreich Hundertwasser

New Zealander, born Austria,
 1928–2000

Exodus into Space

from the Regentag Portfolio, 1971–1972
 Serigraph on paper, varnished in
 parts, with metal imprints
 16³/₈ × 23³/₈ inches
 Gift of Edith and Julius Gutow,
 2019.234

Friedensreich Hundertwasser

New Zealander, born Austria,
 1928–2000

Eye Balance Number Five

from the Regentag Portfolio,
 1971–1972
 Serigraph on paper, varnished in
 parts, with metal imprints
 18¹/₄ × 22³/₄ inches
 Gift of Edith and Julius Gutow,
 2019.235



▲ **Toyohara Kunichika**
 Japanese, 1835–1900

Kabuki Actor, ca. 1870
 Woodcut on paper
 13⁵/₈ × 9⁵/₈ inches
 Gift of Edith and Julius Gutow,
 2019.236

Gordon Mortensen

American, born 1938
Desert Flowers, 1987
 Woodcut on paper
 40 × 28³/₄ inches
 Gift of Edith and Julius Gutow,
 2019.237

Victor Pasmore

British, 1908–1998
Variation No. 3 from Points of
 Contact Series, 1971–1972
 Screenprint on woven paper
 25 × 17 3/4 inches
 Gift of Edith and Julius Gutow,
 2019.238

Matt Phillips

American, 1927–2017
The Moroccans (portfolio of 6
 prints), 1983
 Drypoint with hand-coloring on
 paper
 6 × 5 inches
 Gift of Edith and Julius Gutow,
 2019.239.1–6

Matt Phillips

American, 1927–2017
Untitled, 1983
 Drypoint with hand-coloring on
 paper
 6¹/₈ × 5¹/₈ inches
 Gift of Edith and Julius Gutow,
 2019.240

Mark Tobey

American, 1890–1976
Paeon, 1975
 Etching on paper
 10⁷/₈ × 13⁷/₈ inches
 Gift of Edith and Julius Gutow,
 2019.241

Adja Yunkers

American, born Latvia, 1900–1983
Plenitude in Blue, 1975
 Lithograph on paper
 24 × 19¹/₂ inches
 Gift of Edith and Julius Gutow,
 2019.242

Japanese

Untitled, ca. 1870
 Woodcut on paper
 14¹/₄ × 9⁵/₈ inches
 Gift of Edith and Julius Gutow,
 2019.243

Japanese

Untitled, ca. 1870
 Woodcut on paper
 13¹/₄ × 9¹/₄ inches
 Gift of Edith and Julius Gutow,
 2019.244

Japanese

Untitled, ca. 1870
 Woodcut on paper
 13¹/₂ × 9¹/₂ inches
 Gift of Edith and Julius Gutow,
 2019.245

Japanese

Untitled, ca. 1870
 Woodcut on paper
 13⁵/₈ × 9 inches
 Gift of Edith and Julius Gutow,
 2019.246

Japanese

Untitled, ca. 1870
 Woodcut on paper
 13¹/₄ × 9¹/₄ inches
 Gift of Edith and Julius Gutow,
 2019.247

Japanese

Untitled, ca. 1870
 Woodcut on paper
 13¹/₄ × 9¹/₄ inches
 Gift of Edith and Julius Gutow,
 2019.248

Vito Acconci

American, 1940–2017
Big Brick, 1984
 Etching, aquatint and embossing
 on paper
 70¹/₈ × 30¹/₈ inches
 Gift of the Pelavin Family,
 2019.249

➤

Jonathan Borofsky

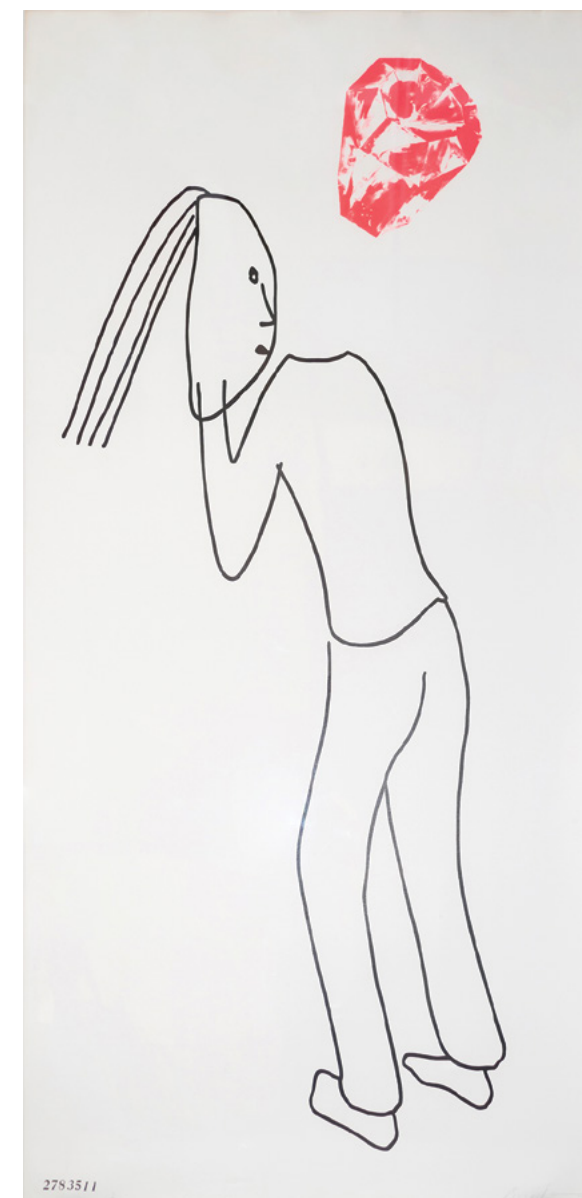
American, born 1942
**I Dreamed I Found a Red
 Ruby**, 1982
 Lithograph on paper
 76 × 39¹/₂ inches
 Gift of the Pelavin Family,
 2019.250

Michael Lucero

American, born 1953
Sunburn, 1990
 Mixed media on white
 earthenware totem sculpture
 106 × 27 × 24 inches
 Gift of the Pelavin Family,
 2019.251

Zarko Stefancic

American, born Yugoslavia,
 1950
Kind of Blue, 1991
 Oil on canvas
 24¹/₂ × 40¹/₂ inches
 Gift of the Pelavin Family,
 2019.252

**Adja Yunkers**

American, born Latvia, 1900–
 1983
Untitled, 1978
 Etching on paper
 30 × 22 inches
 Gift of CDS Gallery, New York,
 2019.253

Adja Yunkers

American, born Latvia, 1900–
 1983
Untitled III, 1978
 Etching on paper
 30 × 22 inches
 Gift of CDS Gallery, New York,
 2019.254

Adja Yunkers

American, born Latvia, 1900–
 1983
Untitled IV, 1978
 Etching on paper
 30 × 22 inches
 Gift of CDS Gallery, New York,
 2019.255

Adja Yunkers

American, born Latvia, 1900–
 1983
Untitled V, 1978
 Etching on paper
 30 × 22 inches
 Gift of CDS Gallery, New York,
 2019.256

Gordon Newton

American, 1948–2019
**Marine Light Study (Sailors
 and Angels), IV-3**, 1987
 Oil pastel, paint, and resin paper
 14 × 7 inches
 Gift of Estate of Gordon Newton,
 2019.257

Gordon Newton

American, 1948–2019
**Marine Light Study (Sailors
 and Angels), V-2**, 1987
 Oil pastel, paint, polyurethane
 varnish, and resin on paper
 14 × 17 inches
 Gift of Estate of Gordon Newton,
 2019.258

Gordon Newton

American, 1948–2019
The Empty Copper Sea, 1994
 Paint, collage, marker, pastel, and
 varnish on paper
 29 × 23 inches
 Gift of Estate of Gordon Newton,
 2019.259

Gordon Newton

American, 1948–2019
Untitled, 1994
 Paint, pastel, marker, collage, and
 varnish on paper
 29 × 23 inches
 Gift of Estate of Gordon Newton,
 2019.260

Jacqueline Bishop

American, born 1955
Out of the Blue, 2013
 Linocut on paper
 30 × 22 inches
 Gift of Mr. and Mrs. Chris Brink,
 2019.261

Renée Stout

American, born 1958
Root Chart No. 4, 2012
 Transfer drawing on
 Chine-collé with monotype
 overprinting
 20¹/₂ × 16¹/₂ inches
 Gift of Mr. and Mrs. Chris Brink,
 2019.262

Viola Frey

American, 1933–2004
A Pile of Figurines and Masked Man, 1997–1998
 Glazed ceramic
 31 × 25 × 16 inches
 Gift of Nancy Hoffman and Peter
 N. Greenwald in honor of Nancy
 Hoffman Gallery, 2019.263

Joseph Raffael

American, born 1933
**Au Debut Du Printemps
 (Beginning Spring)**, 1992
 Watercolor on paper
 81 × 44 inches
 Anonymous gift, 2019.264

Perham Nahl

American, 1869–1935
Somnus, 1925
 Etching on paper
 9¹/₄ × 7¹/₄ inches
 Gift of Dr. Jamile Trueba Lawand,
 in memory of Sarah J. Lippert,
 2019.265

Zarko Stefancic

American, born Yugoslavia,
 1950
Remembering the Fifties, 1991
 Oil on canvas
 24¹/₂ × 40¹/₂ inches
 Gift of David Klein in honor of Dr.
 Marvin E. Klein, MD, 2019.266

Donald J. Cronkhite

American, born 1966
Twilight of Grandeur, 2016
 Oil on linen
 52¹/₂ × 74¹/₂ inches
 Gift of Donald J. Cronkhite,
 2019.267

Alfonso Fernández Acevedo

Chilean, born 1969
Untitled, 2011
 Acrylic on paper
 39 × 53 inches
 Gift of Samantha and Kerstin in
 memory of their beloved uncle,
 Thomas Calhoun, 2019.268

Purvis Young

American, 1943–2010
 Collection of 43 drawings, ca.
 1980
 Dimensions vary
 Gift of Selig D. Sacks, 2019.269–
 311

Purvis Young

American, 1943–2010
**Big Head with Open Mouth in
 Landscape with People**, ca. 1980
 Mixed media on found wood
 panel
 34¹⁵/₁₆ × 20⁵/₈ × 1¹/₈ inches
 Gift of Selig D. Sacks in honor of
 Joseph Jacobs, a great curator
 and mentor, 2019.312

Purvis Young

American, 1943–2010
**Big Smiling Head in Landscape
 with People**, ca. 1980
 Mixed media on found wood
 panel
 24⁷/₈ × 21⁷/₈ × 2 inches
 Gift of Selig D. Sacks in honor of
 Rodney Harder, a gifted educator
 and artist, 2019.313

Purvis Young

American, 1943–2010
 Collection of seven paintings, ca.
 1980
 Dimensions vary
 Gift of Selig D. Sacks, 2019.314–
 320

Claudia DeMonte

American, born 1947
Blue from the Color Exercise
 Series, 2009
 Digital print on paper
 17 × 11¹/₂ inches
 Gift of Claudia DeMonte, 2020.1

Claudia DeMonte

American, born 1947
Orange from the Color
 Exercise Series, 2009
 Digital print on paper
 17 × 11¹/₂ inches
 Gift of Claudia DeMonte, 2020.2

Claudia DeMonte

American, born 1947
Purple from the Color Exercise
 Series, 2009
 Digital print on paper
 17 × 11¹/₂ inches
 Gift of Claudia DeMonte, 2020.3

Claudia DeMonte

American, born 1947
Teal from the Color Exercise
 Series, 2009
 Digital print on paper
 17 × 11¹/₂ inches
 Gift of Claudia DeMonte, 2020.4

Claudia DeMonte

American, born 1947
Yellow from the Color Exercise
 Series, 2009
 Digital print on paper
 17 × 11¹/₂ inches
 Gift of Claudia DeMonte, 2020.5

Claudia DeMonte

American, born 1947
The Luxury of Exercise from
 the Claudia Series, 2002
 Digital print on paper
 21 × 10¹/₂ inches
 Gift of Claudia DeMonte, 2020.6

Claudia DeMonte

American, born 1947
Where's Home from the
 Claudia Series, 2002
 Digital print on paper
 21 × 10¹/₂ inches
 Gift of Claudia DeMonte, 2020.7

Claudia DeMonte

American, born 1947
Who Made These from the
 Claudia Series, 2002
 Digital print on paper
 21 × 10¹/₂ inches
 Gift of Claudia DeMonte, 2020.8

Claudia DeMonte

American, born 1947
Snake Goddess from the
 Goddess Series, 2009
 Digital print on paper
 21 × 13 inches
 Gift of Claudia DeMonte, 2020.9

Ed McGowin

American, born 1938
Name Change Portfolio, 1972
 Screenprint on paper
 14¹/₂ × 14¹/₂ inches
 Gift of Ed McGowin, 2020.10–35

Ingram Andrew Young

American, born 1938
Ship to Shore, 1980
 Airbrush acrylic and silver-plated
 frame
 50 × 102 inches
 Gift of Ed McGowin, 2020.36

Louis Comfort Tiffany

American, 1848–1933
Favrile glass bud vase, ca. 1895
 Glass
 5³/₄ × 3¹/₄ inches
 Gift of Fred and Barbara Bellairs,
 2020.37

Louis Comfort Tiffany

American, 1848–1933
Favrile glass bulbous form vase,
 ca. 1895
 Glass
 4¹/₂ × 4 inches
 Gift of Fred and Barbara Bellairs,
 2020.38

Louis Comfort Tiffany

American, 1848–1933
**Paperweight glass bowl and
 underplate**, ca. 1896
 Glass
 3 × 6 inches
 Gift of Fred and Barbara Bellairs,
 2020.39

Purvis Young

American, 1943–2010
Untitled, n.d.
 Ink on paper
 8¹/₂ × 10¹/₂ inches
 Gift of Dr. Sharon A. Simeon,
 2020.40

Purvis Young

American, 1943–2010
Untitled, 1970s
 Ink on paper
 8 × 14¹/₄ inches
 Gift of Dr. Sharon A. Simeon,
 2020.41

Tyree Guyton

American, born 1955
Straight and Narrow, 2014
 Serigraph on paper
 24 × 18 inches
 Gift of Elisabeth Saab and Chad
 Hansen, 2020.42

Thomas McClure

American, 1920–2009
Succubus III, ca. 1970
 Ink and gesso on board
 72 × 24 inches
 Gift of Frank Kaelin, an Arizona &
 Cranbrook friend, 2020.43

Guy Adamec

American, born 1951
Sunspot, 2019
 Stoneware
 2¹/₄ × 17 inches
 Gift of Guy Adamec, 2020.44

African

Spoon, n.d.
 Wood
 12 × 2¹/₄ × 3³/₄ inches
 Gift of Marlene and Reynold Kerr,
 2020.45

David Driskell

American, 1931–2020
Mask Series II, 2019
 Woodcut and digital print on
 paper
 15 × 11 inches
 Museum purchase with funds
 from the Collection Endowment,
 2020.46

Nelson Stevens

American, born 1938
Primal Face, 2019
 Serigraph on paper
 20¹/₂ × 20 inches
 Museum purchase with funds
 from the Collection Endowment,
 2020.47

Stephen Towns

American, born 1980
The Gift of Lineage #5, 2018
 Acrylic, Bristol board, metal leaf,
 natural and synthetic fabric,
 polyester and cotton thread on
 wood panel
 36 × 24 inches
 Museum purchase with funds
 from the Community Gala and
 the Collection Endowment,
 2020.48

Ai Weiwei

Chinese, born 1957
Bombs, 2019
 Offset lithograph on paper
 72 × 48 inches
 Museum purchase with funds
 from the Collection Endowment,
 2020.49

Guy Adamec

American, born 1951
Balance, 2019
 Stoneware
 2⁷/₁₆ × 25¹³/₁₆ inches
 Museum purchase with funds
 from the Collection Endowment,
 2020.50

Brian Kakas

American, born 1979
Tectonic Perceptions #3, 2017
 Stoneware
 32 × 22 × 29 inches
 Museum purchase with funds
 from the Collection Endowment,
 2020.51

Judy Bowman

American, born 1952
Mom in Harlem, 2020
 Archival pigment print on paper
 20 × 30 inches
 Museum purchase with funds
 from the Collection Endowment,
 2020.52

Joseph Drapell

Canadian, born Czech
 Republic, 1940
Electrons, 2019
 Digital print on paper
 22 × 31 inches
 Commissioned for the Flint Print
 Club, 2020.53

**Viola Frey**

American, 1933–2004
Arrogant Man, 1986
 Glazed polychrome ceramic on a
 steel armature
 123 × 57 × 23 inches
 Gift of Tiffany Lovett in honor of
 her father William S. White, who
 was not an arrogant
 man, 2020.54
 © 2021 Artist' Legacy
 Foundation/Artists Rights Society
 (ARS), NY



Loans

The Flint Institute of Arts believes an effective way to enhance its reputation as an important cultural institution is to lend works of art from its permanent collection to other museums. Lending art promotes collegial relationships between museums, and provides national and international audiences exposure to works of art from the FIA's permanent collection. In addition, the FIA also borrows works from other museums, galleries, and collectors to supplement its permanent collection and exhibitions.

Loans from the Permanent Collection

The following artworks were on loan from the FIA to the following exhibitions:

Nature's Nation: American Art and Environment

5.25.19 – 9.19.19
Crystal Bridges Museum of American Art
 Bentonville, Arkansas

Hughie Lee-Smith
 American, 1915–1999
Slum Lad, ca. 1960
 Oil on canvas
 26 x 32 inches
 Courtesy of the Isabel Foundation, Inlander Collection, L2003.80

The Color of the Moon

6.1.19 – 9.8.19
James A. Michener Art Museum
 Doylestown, Pennsylvania

Thomas Chambers
 American, born England, 1808–1869
Old Sleepy Hollow Church (Alloway Kirk, with Burns' Monument), ca. 1843–60
 Oil on canvas
 18³/₄ x 24³/₈ inches
 Gift of Edgar William and Bernice Chrysler Garbisch, 1968.18

The Early Celebrity of Peter Paul Rubens

4.6.19 – 9.8.19
Fine Arts Museums of San Francisco (Legion of Honor)
 San Francisco, California

10.5.19 – 1.5.20
Art Gallery of Ontario
 Toronto, Canada

>
Peter Paul Rubens
 Flemish, 1577–1640
Angel, 1610–11
 Oil on modern support transferred from wood panel
 80¹/₂ x 57 inches
 Gift of Viola E. Bray, 2005.158

Roger Brown: Virtual Still Lifes

5.2.19 – 9.15.19
Museum of Arts and Design
 New York, New York

Roger Brown
 American, 1941–1997
Virtual Still Life #15: Waterfalls and Pitchers, 1995
 Oil on canvas with mixed media
 37¹/₂ x 50 x 9 inches
 Museum purchase, 2011.324

Lee Krasner

5.30.19 – 9.1.19
Barbican Art Gallery
 London, England

10.10.19 – 1.12.20
Schirn Kunsthalle
 Frankfurt, Germany

2.7.20 – 8.16.20
Zentrum Paul Klee
 Bern, Switzerland

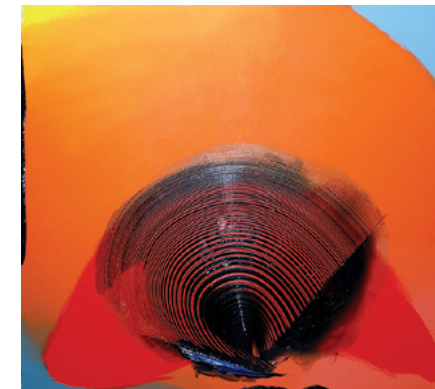
Lee Krasner
 American, 1908–1984
Happy Lady, 1963
 Oil on cotton duck
 58 x 75³/₄ inches
 Purchased with funds from the National Endowment for the Arts Museum Purchase Grant and the Samuel and Alma Catsman Foundation, 1978.59



Science Paints Our World: Chemistry & Art

6.4.19 – 9.1.19
Midland Center for the Arts
 Midland, Michigan

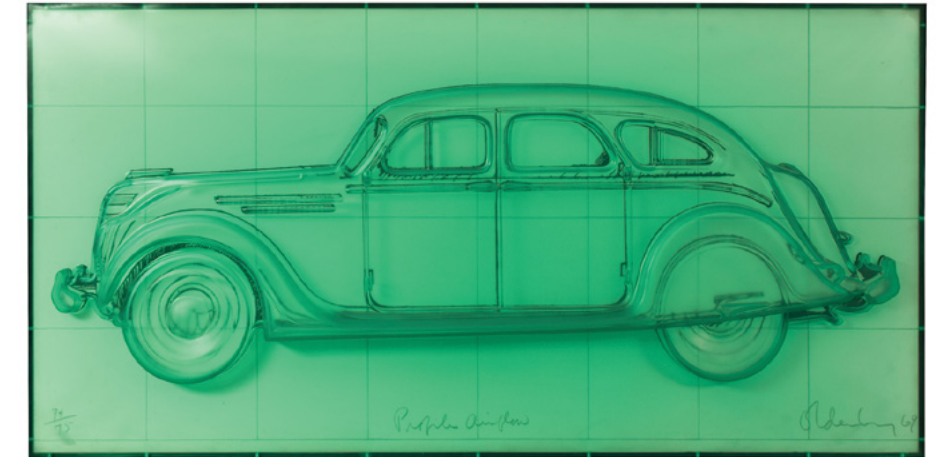
▼
Joseph Drapell
 Canadian, born Czech Republic, 1940
Gates of Life, 1998
 Acrylic on canvas
 84 x 95 inches
 Gift of Anne Low, 2008.355



John Gittins
 American, born 1940
Guadalupe, 1987
 Acrylic on canvas
 85 x 25 inches
 Gift of the artist, 2008.341

Roy Lerner
 American, born 1954
Getting Traction I, 1994
 Acrylic, gel medium and screen on canvas
 57¹/₂ x 33 inches
 Museum purchase, 2000.51

Roy Lichtenstein
 American, 1923–1997
Sweet Dreams, Baby!, 1996
 Silkscreen on paper
 39 x 28³/₄ inches
 Museum purchase, 1966.6



Morris Louis
 American, 1912–1962
I-31, 1962
 Acrylic resin on unprimed canvas
 83¹/₄ x 15¹/₂ inches
 Museum purchase with funds from the J. L. Hudson Company Acquisitions Challenge Grant and contributions from the Viola E. Bray Charitable Trust and other donors, 1982.180

Marjorie Minkin
 American, born 1941
Triton, 1995
 Acrylic on lexan
 36 x 19¹/₂ x 5¹/₂ inches
 Gift of the Vero Beach Museum of Art, 2007.146

Irene Neal
 American, born 1936
Inside Velvet, 1999
 Acrylic on canvas on board
 82 x 42 inches
 Gift of Irene Neal, 1999.32

Bruce Piermarini
 American, born 1953
Caterpillar Crawl, 2001
 Acrylic and foam on canvas
 80 x 30 x 16 inches
 Gift of the artist, 2005.1

Jerald Webster
 American, born 1953
Rites of Spring, 1992
 Acrylic on canvas
 42¹/₄ x 78³/₈ inches
 Gift of the artist, 2001.2

Life is a Highway: American Car Culture

6.15.19 – 9.15.19
Toledo Museum of Art
 Toledo, Ohio

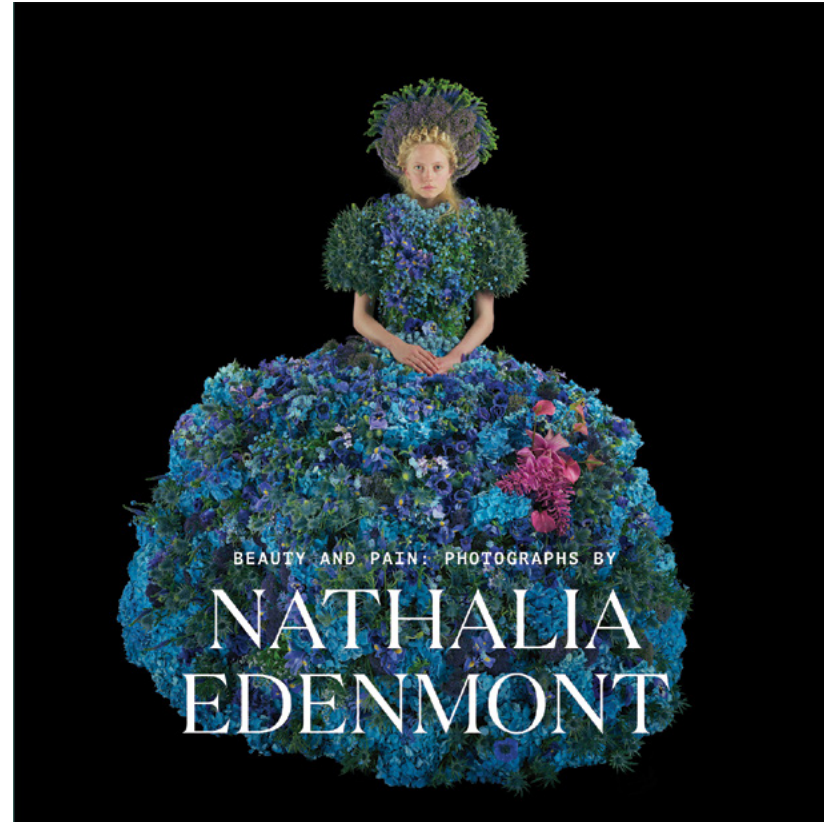
▲
Claes Oldenburg
 American, born Sweden, 1929
Profile Airflow, 1969
 Molded polyurethane over lithograph on paper
 33¹/₂ x 65¹/₂ inches
 Museum purchase, 1970.19
 © Claes Oldenburg

Mel Ramos
 American, 1935–2018
AC Annie, 1972
 Offset lithograph on paper
 30¹/₄ x 24¹/₂ inches
 Museum purchase, 1977.7

Publications

Beauty and Pain: Photographs by Nathalia Edenmont

Publications are one of the many tools museums have to disseminate information about art in their collections and on loan through new research and up-to-date photography. These books are offered for sale to visitors, providing a lasting memory of their visit. Additionally, these publications are gifted to other museums to share knowledge and create opportunities for future collaborations.



Published to accompany the traveling exhibition *Beauty and Pain: Photographs by Nathalia Edenmont*, this fully illustrated catalogue featured the essay “The Bitter Fruit of Beauty and Pain” by Amy Pleasant. Organized by the Flint Institute of Arts, with its first venue at the Stamford Museum and Nature Center in Connecticut, in September 2019. This exhibition surveyed the highlights of Edenmont’s photography from 2007 to 2018, revealing how her work and life are intertwined. The catalogue and exhibition focused on how her life experiences shaped her artistic philosophy, with the artist stating that “there is no beauty without pain or pain without beauty, and in my mind, they are the same.”

Though the exhibition was scheduled to open in Flint during the 2019-20 fiscal year, it was delayed due to the COVID-19 closure of the museum, opening instead on July 11, 2020.

Education

K-12 Programs

PreK-12 programs served 30,255. Eighteen percent participated in gallery lessons, 18% in studio activities, 52% in outreach programs, 1% in self-guided visits/other, and 11% in virtual programs during the Stay at Home order. Forty-three percent of students attended public schools, 4% private schools, and 53% homeschool/charter schools, with 90% of the schools located in Genesee County. The remaining 10% of schools served were from Clinton, Lapeer, Livingston, Oakland, Saginaw, Sanilac, and St. Joseph counties.

Docents & Interns

Docents are integral to the Education department. Eighteen volunteers were involved in the docent program in fiscal year 2020. They participated in intensive training sessions from September through May. Docents assisted with 300 gallery and studio programs and served 4,509 people, resulting in 1,132 hours of service. In addition, four people participated in new docent training.

Active Docents

Oya Agabigum
Lavonne Bomeli
Tom Butts
Janet Cameron
Susan Damone
Daiva Devereaux
Patty Duffy
Harold Ford
Kathy George

Alfreda Harris
Dena Hillman
Lynne Hurand
Christine Jones
Belle McPhee
Jeanette Nassif
Kate Nickels
Nancy Peske
Kathy Weiner

Docents in Training

Karen Callewaert
Carol Dowsett
Michael Kennard
Pam Kenny

The Flint Institute of Arts is committed to promoting understanding and enjoyment of the visual arts through high quality art education programs. We believe art is a vital component of life and that learning is a lifelong process. Our educational programming provides dynamic and enriching experiences for people of all ages with all levels of familiarity with art.

Our programs invite people to gain greater understanding and enjoyment of the FIA’s outstanding permanent collection and special exhibitions. They are designed to present learning opportunities that are rich in content and stimulate imagination, thought and creativity.

Education programs served a total of 42,948 during the fiscal year, including 5,190 served virtually during the Stay at Home order.



A group of school children participate in a gallery lesson conducted by Education staff member Jenni Edgington.

Art School

The FIA Art School is dedicated to the enrichment of the community through individual academic exposure to the visual arts. Highly qualified faculty offer instruction in drawing, painting, glass arts, weaving, photography, animation, ceramics, sculpture, college portfolio development, and early childhood art courses. Since 1928, the Art School has operated continuously, helping students develop a wide range of artistic goals and skill levels. Programs are designed to support the mission of the FIA with dynamic curricula that engages students and the community through creative processes, studio experiences, and gallery exhibitions.

Programming

More than 430 non-credit studio courses and workshops are offered each year. Classes run in 15 art school studios seven days per week.

Free family activities are designed to serve participants ranging in age from 3.5 through adult and help to expose a wider range of families to the opportunities available at the FIA. Families are encouraged to participate in themed, hands-on projects in the Art School studios utilizing a wide variety of techniques and mediums. In addition to Holiday Walk, Halloween Happenings, and other free activities, families had the opportunity to work with visiting artists. This fiscal year, the Art School offered 4 free family activities, totaling 2,053 participants.

The FIA collaborative Healing Through Art Therapy program with McLaren Flint generated 140 encounters during the 2019–20 fiscal year with art therapist Erin Keith. Participants, all of whom are affected by cancer in some way, use art to work through complex feelings and issues as part of the healing process. The Art School also hosted an exhibition of works created by participants in the Healing Through Art program. For many of these artists, it was the first time they ever publically displayed their works. More than 200 people attended the opening reception.

The Art School partnered with the Food Bank of Eastern Michigan to produce more than 1,700 handmade ceramic bowls for the Food Bank's annual Empty Bowls Project, which helped raise over \$40,000 for the Food Bank's programs.

With funding assistance from the James A. Welch Foundation, the Pre-College Portfolio Development Program continues to facilitate the career pursuits of more than 40 gifted high school visual arts students each year from area school districts. There are three groups concurrently participating in the program annually. The primary objective of this program is to further enhance student abilities in the visual arts through advanced studio instruction, college admission preparation, and exposure to various career paths within the arts to both students and families. Over the course of the three-year program, each student produces a portfolio developed to showcase his or her individual strengths for college applications and scholarship consideration. New additions to PDP programming include one-week intensive workshops during the summer that give students the chance to do deep-dive studies of particular topics such as color theory, digital art, and glassblowing. PDP students are visited each year by representatives from art colleges around the region including College of Creative Studies in Detroit, Stamps School of Art & Design at UM-Ann Arbor, Milwaukee Institute of Art and Design, and more. In fiscal year 2019–20, we provided three full tuition PDP scholarships, totaling \$555, as well as partial scholarships totaling \$1,185.

The preparation for presentation and public exhibition of artwork is an essential component of arts education and the Art School is committed to providing opportunities for students to show their work. The Art School mounts four to six one-month hallway exhibitions of student and faculty work each year and four three-month exhibitions in the Art School Gallery at the front of the FIA museum, next to the gift shop, which give students not only the opportunity to show their work, but introduces the possibility of selling it as well. The Art School also maintains a selection of student and faculty work in the lobby of the Dryden Building on 2nd and Saginaw Streets in downtown Flint.

The Art School continues its partnership with the Disability Network of Flint and Genesee to provide accessible art classes to adults with a range of intellectual, physical, and emotional disabilities. Disability Network instructors and aides teach these classes twice a month in an Art School studio. This program logged 165 encounters this year.

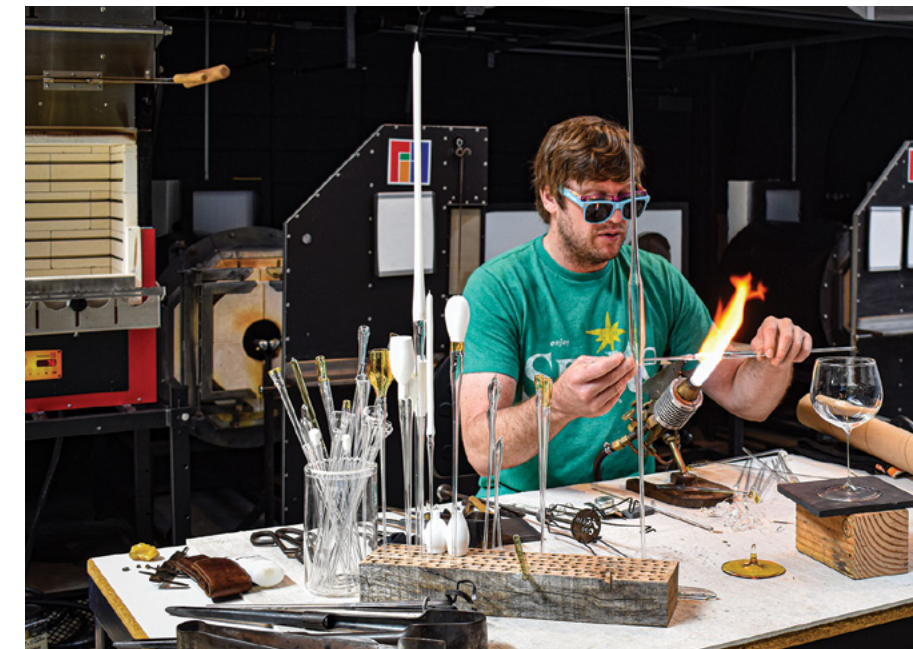
One-week Summer Art Camps and other robust studio programming for children and teens introduce young artists, 3.5 to 17 years old, to the basic elements and principles of art and design. Each of the sessions consists of a series of projects revolving around an accessible central theme. Using this fun topic, students explore the elements of art with hands-on experiences in ceramics, drawing, sculpture, and mixed media. Teens participate in more focused

explorations of artistic disciplines including pottery, glass, 3D design, painting, comic art, and figure drawing. During the summer of 2019, art camp and other children's courses enrolled a total of 86 students.

To help expose the local community to artists and ideas from outside the area, the Art School maintains a visiting artist program that brings diverse, nationally known artists to the FIA for workshops and free public presentations. Recent visiting artists include glass artists Robin and Julia Rogers from Norfolk VA and renowned glassblower Martin Blank. The Art School collaborated with Flint Repertory Theatre to host visual theatre artists Concrete Temple Theatre from New York City.

As the preeminent studio facility in the mid-Michigan region, the Art School is a tremendous asset to the educational community. The Art School has an ongoing collaboration with University of Michigan-Flint's Fine Arts Department to offer for-credit courses to UM Flint students in the Art School studios. Courses are taught by UM-Flint faculty and take advantage of the unique opportunities presented by the Art School's extraordinary facilities. Courses and workshops include frameworking, glass casting, and figure drawing. The Art School also collaborates with Mott Community College to provide ceramics glazing and firing services for their sculpture programs.

The Art School Hot Shop offers free glassblowing demonstrations to the public



Enrollment

Summer 2019, 524 students
Fall 2019, 688 students
Winter 2019–20, 679 students
Spring 2020, 562 students
(suspended due to COVID-19)

Scholarships

The Art School granted \$22,687 in scholarships for the fiscal year 2019–20 to 158 students (73 youth scholarships and 85 adult scholarships).

Frameworking artist Matt Eskuche completed a residency at the Art School on July 24–27, which included a 2-day workshop for 14 students, two days of free public demonstrations, and a free public lecture in the FIA Theater.

during museum hours every Saturday and Sunday. The demonstrations are funded by McLaren Health Care and served 4,599 visitors during the fiscal year 2019–20.

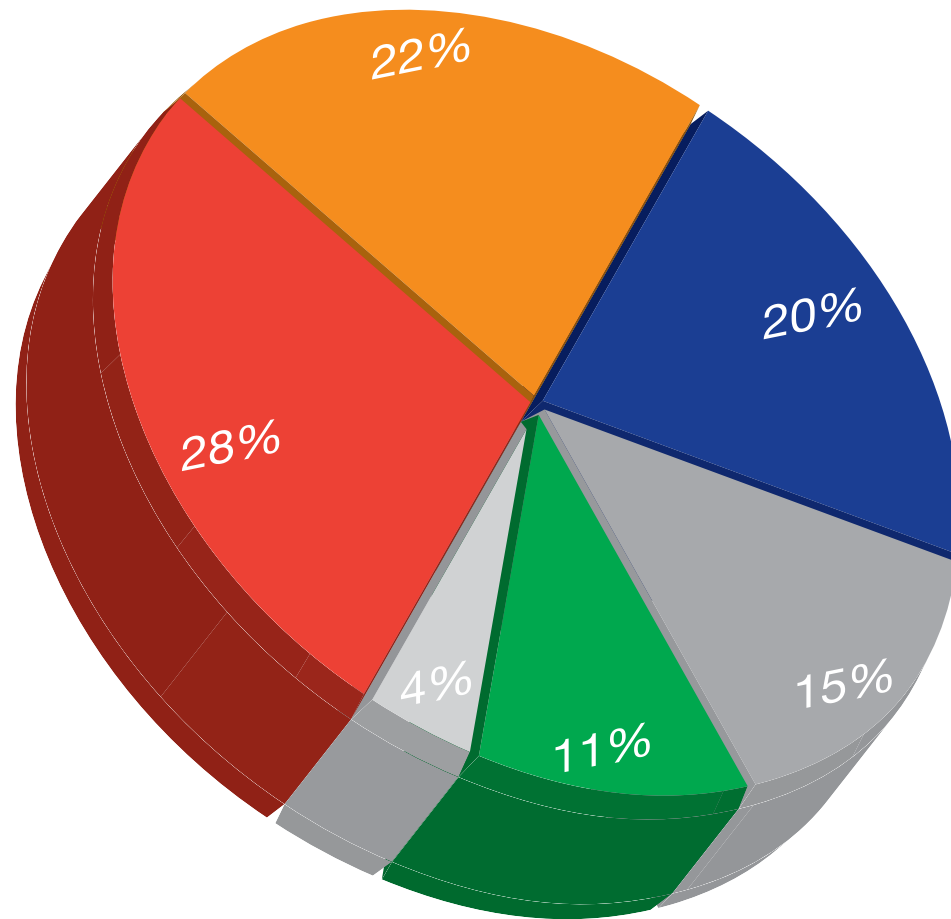
Like all other cultural and educational institutions, the Art School unexpectedly ceased operations on March 13, 2020 in response to the COVID-19 pandemic. All courses, workshops, and other programming were suspended from March 13 through the end of the fiscal year. Registered students were offered the choice of refund, credit, or donation. Twenty students have donated a total of \$2,700, 56 have asked for refunds, and 486 are credits.

Development

The Development Department is responsible for all areas of funding for the Flint Institute of Arts. The department manages audience development, public and community relations, promotion and marketing, internet and social media, and the FIA website.

Income

The FIA has six primary sources of support: county millage, endowment income, grants, contributions, earned income, and membership.



- Millage
- Endowment Income
- Grants
- Contributions
- Earned Income
- Membership

County Millage

In August of 2018, the Genesee County Arts Education and Cultural Enrichment Millage passed. The ten-year millage contributes funds to the FIA's general operating budget. In fiscal year 2019-20, the \$1,871,548 millage funding was 28% of the operating budget.

Endowment Income

Both restricted and unrestricted, endowment funds support general operations, exhibitions, programs, art acquisitions, art conservation, scholarships, lectures, and membership initiatives. As of June 30, 2020, the endowment income totaled \$1,520,200 contributing 22% to the annual income. Unrestricted donations in the form of planned gifts and bequests are traditionally allocated to endowment.



29th annual Thompson Lecture, October 15, 2019, *Protecting the Priceless: History in Peril!* with guest lecturer Robert K. Wittman.

Grants

The FIA receives grant awards from foundations, community organizations, businesses, corporations, and state and federal governments. Revenue from grants represents 20% of the FIA's annual income. The FIA receives support from two auxiliary groups, the Founders Society and Friends of Modern Art (FOMA).

Contributions

Sponsorships, annual appeal gifts, memorials, donations, and funding of specific programs or events represents income sources in this category, which contribute 15% of the FIA's annual income.

Earned Income

Income generated from sales, tuition, facility rentals, special events, and admissions provide 11% of the FIA's operating income.

Membership

Membership dues represent 4% of the FIA's general operating support and begin at \$20 for Youth and Student levels and progress to \$1,500+ for the Rubens Society level. Basic benefits are enjoyed by all, and higher level donors receive extended benefits, such as reciprocal membership privileges to over 1,000 museums nationwide, at the Sustainer level (\$100) and above. The Rubens Society generates more than \$100,000 to the budget and Society members are invited to three exclusive events throughout the year. FIA Art School members receive a discount on art classes. Of new members who joined the FIA, 18% joined through the Art School.

The Flint Print Club was established in 2007. The club is limited to 100 members who, after first becoming a member of the FIA at the Family level (\$50) or above pay an annual club fee of \$250 and receive a commissioned print by a critically acclaimed artist. The club is dedicated to connoisseurship, the pursuit of personal collecting, and the purchase of prints to augment the FIA's collection.

The FIA College Town initiative provides free membership to college students nationwide. Students with a valid ID receive basic membership benefits with invitations and other announcements received via email.

Please see pages 35-42 for this fiscal year's membership listing.

Donors to and members of the FIA provide the foundation for all the FIA's activities.

Special Events & Facility Rentals

The Flint Institute of Arts offers an active schedule of events for members and the general public throughout the year, including Holiday Walk, the Founders Society's First Frost Arts & Fine Crafts Fair, and the Friends of Modern Art's Annual Flint Art Fair. Annual fundraisers at the FIA are diverse and appealing to all demographics. A committee of devoted and hard-working volunteers are active in all areas of planning each event. From Art on Tap and Wine Tasting to the Community Gala and The PARTY, the FIA continues to create a varied palette of events to engage the community and raise funds for the Institute.

Sheppy Dog Fund Lectures 7.10.19 & 10.23.19

The Sheppy Dog Fund Lecture was established to address the topics of art, religion, and history prior to the 19th century, and is funded by The Sheppy Dog Fund, Dr. Alan Klein, Advisor. Presented were the following lectures: July 10, 2019, *From Manchester to Montgomery: Textile Conservation in the UK and USA* by Howard Sutcliffe and October 23, 2019, *Irish Folk Tales and Halloween Legends: An Evening of Storytelling* by Mark Ó Gáráin. Postponed due to COVID-19 were the following lectures: March 25, 2020, *The Origins of the Afterlife (Part One)* and April 1, 2020, *The Flowering of the Afterlife (Part Two)* by Dr. Justin Sledge; May 20, 2020, *Medieval Matters: Curating the Middle Ages at The Metropolitan Museum of Art* by Dr. C. Griffith Mann.

Isabelle de Borchgrave Au Revoir Soiree 9.7.19

The Isabelle de Borchgrave Au Revoir Soirée was a special exhibition closing event. The event featured a conversation in the FIA Theater between artist Isabelle de Borchgrave and Frank Verpoorten, Director of the Baker Museum in Naples, Florida at 6:00p attended by 289 guests. Following the presentation, 128 guests enjoyed a cocktail reception in the Willson Gallery from 7:00p--8:00p



Art on Tap: Beer, Bourbon, BBQ, 2019

with entertainment by pianist Cindy Siegle. They were thrilled to receive a signed copy of the exhibition catalogue with the opportunity to have the artist personalize it during cocktail hour, a spa bounce back card from Neiman Marcus, and cookies from Andiamo's. Following the reception guests then dined in the Bray Renaissance Gallery with Isabelle de Borchgrave, who also did a special Q&A during dessert. Andiamo's provided an exceptional dinner, Gerych's outdid themselves with décor, and valet was provided by Appearance Valet.

Event Sponsors: Art House Lectures & Tours, The Contemporaries, Detour Detroit, FIA Docents, FOMA/Founders, Friends of the FIA, Mr. & Mrs. John Henry, The Hurand Family, Rochelle & Randolph Forester Foundation, Sorensen Gross Company, Mr. & Mrs. James Spangler, Mr. & Mrs. George Stolzenfeld, William S. White & Louise Hartwell, and Mrs. Mary Whitlock

29th Annual Thompson Lecture 10.15.19

The Thompson Lecture was established in 1991 by Dr. and Mrs. Jack W. Thompson to enable the Flint Institute of Arts to present a distinguished speaker in the arts or humanities each year. Robert K. Wittman discussed his new book, *The Devil's Diary: Alfred Rosenberg and the Stolen Secrets of the Third Reich* and the importance of the protection and recovery of manuscripts and lost artworks.



City of Flint Mayor Sheldon Neeley and Santa Claus at the Holiday Walk, 2019

12th Annual Art on Tap: Beer, Bourbon, BBQ 10.18.19

A limited amount of rare and hard to find beers and bourbons were available at the Early Access, followed by the Main Event. Over 400 guests sampled an exclusive selection of craft beers and sipped on unique bourbons all evening long. The Reichlin Small Group performed the blues, the Gypsy Girls Caravan delivered photo strips to guests in a vintage camper, there was a flameworking demonstration, games, barbecue buffet and donut bar. Guests had the opportunity to win a wheelbarrow filled with one of each beers featured at the event, one of a kind beer stein sets created by the FIA Art School ceramics instructors, a set of hand-blown rocks glasses by FIA Glass Manager Brent Swanson, amazing brewery packages, and much more. The committee raised \$21,750, with a net profit of \$18,000. Proceeds raised supported museum programming and outreach programs for PreK-12 students.

Event Sponsors: Al Serra Auto Plaza, American Electric, American Machining, Ascension Genesys, Attorney Eric McCormick, Bennett Communication Solutions, Mrs. Edmund Brownell, Community Podiatry Group, P.C. Dr. Shawn Reiser DPM & Dr. David Taylor DPM, David Kelly of Raymond James, John K. Costa, AIA Architectural Design & Consultation, PLLC, Don Franco Salons, Mr. & Mrs. Chris Dundas, Ed Constable - Realtor, Harry & Kathy

Eiferle, ELGA Credit Union, Fifth Third Bank, The Genesee Group, Gill-Roy's Hardware, Glastender, Inc., Kettering University, Chene Koppitz, Landaal Packaging Systems, Law Offices of Heather V Burnash, PLLC, Jamile T. Lawand, Mr. Milton & Dr. Brenda Rogers-Grays, Thomas Mitchell, Drs. Bobby & Nita Mukkamala, Dr. & Mrs. Kienan F. Murphy, Olmsted Associates, Inc., Premier Automation Contractors, Inc., Quicks Performance Sports Training, Dr. & Mrs. Ray & April Rudoni, Ann & Khalil Saab, Martha & Tim Sanford, Scott B. Karlene, M.D. & Kevin J. Gaffney, M.D. Dermatology, Jim & Patt Spangler, Mr. Alvern & Mrs. Theresa Stephens-Lock, The Torch Bar & Grill, Tom & DeAnn Townsend

14th Annual First Frost Arts & Fine Crafts Fair 11.2.19 – 11.3.19

This fair offered a carefully-selected variety of artists' booths in Isabel Hall and adjacent space. It showcased giftable art and fine hand-crafted items at the beginning of the holiday shopping season as well as the popular Festival of Trees and the other features that have made this show popular.

All funds raised during the event help support the programming and exhibitions at the Flint Institute of Arts. **Sponsors:** Chris and Jean Dundas, Berkshire Hathaway Home Services Michigan Real Estate - Jodi Barcey, Crust - A Baking Company, Fratz Consignment, Lynne Hurand, George and Christine Jones, McLaren Flint, James and Perry Ann Owen, Sharp Funeral Homes, Thinkshlink Real Estate Team RE/MAX Edge - Jonathan Schlinker, Zito Construction

Holiday Walk 12.3.19

Holiday Walk is a family friendly event put on throughout the Flint Cultural Center. In 2019, the FIA offered a special meet and greet with beloved PBS character Clifford, glassblowing demonstrations, showing of the film *Elf* in the Theater, guided craft in the Art School, and musical entertainment throughout the galleries. It was a festive evening for all!

13th Annual Community Gala 1.25.20

In celebration of the *Community* exhibition, which featured works by African American artists in the FIA collection. It began with a lecture by Dr. Kelli Morgan, followed by the exhibition opening and reception. Unique to this exhibition, visitors had an opportunity to vote for one of three works by artists not currently in the collection that were revealed at the Gala. A portion of the Gala proceeds will go towards purchasing the winning artwork. Catering was provided by Redwood Steakhouse, décor by Divine Events & Linens, and entertainment by the Reichlin Small Group. The committee raised \$52,750, beating their record in 2019 with the highest Gala sponsorship ever! Ticket sales reached \$4,000 and the net profit is \$40,500, also the highest in Gala history. Proceeds directly support exhibitions and expand the African American art collection.

Event Sponsors: Ace-Saginaw Paving Co., Reverend Leon & Mrs. Patricia Adams, Advanced Physical Therapy Center, Henry & Mary Allen, Alpha Kappa Alpha Zeta Beta Omega, Al Serra Auto Plaza, Applebee's (Miller Road), Mrs. Celestia Bell, James & Kathryn C. Boles, Mrs. Edmund Brownell, C&S Motors, The ChoSen Few Corporation, Floyd & Brenda Clack, Communities First, Inc., Mr. Craig & Mrs. Lennetta Coney, Consumers Energy, Cracker Barrel, Delta Sigma Theta Sorority, Inc., Dental Care Team (Dr. & Mrs. Jarjoura), Edward Jones (Eric Gasper), Elga Credit Union, Eric S. Peterson & Associates Mortgage Lenders, LLC, The Flint Area (MI) Chapter of the Links Inc., John & Cathy Fredericks, The Friends of Berston Field House, Dr. Raymond F. Gist, D.D.S., Grace Emmanuel Baptist Church, The Greater Flint Chapter of the Pierians, Inc., Hamilton Community Health Network,



Community Gala, 2020

their financial support to the 2021 event, donate funds to the museum, or receive a full refund. The museum received an amazing response from supporters with \$11,000 in donations and \$17,500 to be applied to 2021. With certain hard costs paid, this resulted in a net profit of \$5,400. Proceeds raised supported museum programming and outreach programs for PreK-12 students.

53rd Annual Flint Art Fair Canceled

Attracting thousands of visitors each year, this summer event held on the second weekend of June is located on the grounds of the FIA and is organized by the auxiliary group Friends of Modern Art (FOMA). The art fair is juried to ensure the highest caliber of artists and has introduced works from as many as 175 established and emerging artists from Michigan and beyond. Originally scheduled for Saturday, June 13 and Sunday, June 14, 2020, the event was canceled due to COVID-19.

Facility Events

The rental and partnership programs generate earned income for the FIA through the use of public spaces such as the Lobby, Isabel Hall, Theater, Board Room, Lecture Room, and Courtyard (weather permitting). Events included several award ceremonies, business functions, family celebrations, film screenings, weddings, and community partnership events for Communities First, Inc., Flint Jewish Federation, and the University of Michigan-Flint. The FIA also hosts several internal events during the fiscal year, which include lectures, Member's Previews, Ruben's Society dinners, and community events such as the Flint Cultural Center's Holiday Walk. Due to the state of emergency declared by the State of Michigan over the COVID-19 pandemic and the need to limit large gatherings, the FIA cancelled all events from March 14 – June 30, 2020 in the best interest of the community. The closure resulted in the cancellation of 22 events.

to take place on March 21, 2020 with the theme Masquerade. Unfortunately due to the COVID-19 pandemic, the event was cancelled. Sponsors and guests were given the option to apply their financial support to the 2021 event, donate the funds to be split between the FIA and JLF, or receive a full refund. The museum received a remarkable response from supporters with \$4,615 in donations and \$16,525 to be applied to 2021. With certain hard costs paid, this resulted in a net profit of \$2,900 to be split between the JLF and FIA. Proceeds raised support museum programming and outreach programs for PreK-12 students, as well as the Junior League of Flint and its community partners.

LEGO Competition Canceled

Encouraging creative play, the Art School's Lego Competition is held annually each spring. Children in grades K-12 may submit original LEGO sculptures for jury and prizes are awarded in a variety of categories. Selected works are on exhibition in the Art School the following week. Activities at the event include open lego building and a film. Originally scheduled for Saturday, April 18, 2020, the event was canceled due to COVID-19.

11th Annual The PARTY Canceled

A Vintage Circus was scheduled to take place on June 6, 2020. Unfortunately, due to the COVID-19 pandemic, the event was cancelled. Sponsors and guests were given the option to apply

The Hamo Group of Wells Fargo Advisors, HAP, Maggie Hart, Louis Hawkins, Dr. & Mrs. John Hebert, HI-TECH Protection (Timothy & Melinda Johnson), Gary & Carol Hurand, Lynne Hurand, Hurley Foundation, Hurley Medical Center, Mr. Leo & Mrs. Debra Jennings, Dr. Gary & Mrs. Donna Johnson, Dr. Gary K. Johnson, M.D., M.P.H., Mrs. Nina Jones-Lewis, Mr. & Mrs. Tyrone Jordan, Craig & Sandra Kelley (Prestige Promotions, LLC), Kettering University, Kathryn Koegel, Drs. Prasad & Jayashree Kommareddi, Jamile T. Lawand, Dr. Ramotsumi & Velynda Makhene, Jermarx & Tabitha Marsh, Sean & Eureka McCormick, Reverend John & Mrs. Clydell McKenney, McLaren, Thomas J. Mitchell, Plante Moran, Mr. Roland & Mrs. Cynthia Morse, Mott Community College, Drs. Bobby & Nita Mukkamala, Dr. & Mrs. Kienan F. Murphy, Mustafa Alnounou, M.D., FAGC, FACP, Oak Street Health, Olmsted Associates, Inc., Dr. Tolutopu Oyasiji, PNC Bank, Mrs. Tiffany Pritchett, Dr. Rama & Dr. Venkat Rao, Dr. & Mrs. Lawrence Reynolds, Mr. & Mrs. Dwight & Lisa Rogers, Mr. Milton & Dr. Brenda Rogers-Grays, Dr. Daniel J. & Mrs. Mary C. Ryan, Mr. Boaz & Mrs. Cleorah Scruggs-DeBose, Chuck & Kathryn Sharbaugh, Polly Sheppard, Alvern & Theresa (Stephens) Lock, Archaea Rajan, DDS & Symantec Ram, Ann & Khalil Saab, Dr. Robert & Mayor Susan Soderstrom, Shelley Spivack & Linda Pylpiw, Mr. Woodrow & Mrs. Reta Stanley, Team One Credit Union, Mr. Randy & Mrs. Judy Thornton, Terry Turner, Town Center Family Dental (Dr. Lori Thomas, Dr. Tim Vanitvelt, & Dr. Richard Halliday), Patrick & Gloria Tyus, University of Michigan-Flint, Valley Area Agency on Aging, Mr. & Mrs. Edward F. Walterhouse, Dr. & Mrs. Jay Werschky, The Williams Firm, P.C., Todd & Lisa Wisely

21st Annual Wine Tasting Canceled

In partnership with the Junior League of Flint (JLF), this event was scheduled

Auxiliary Groups

Friends of Modern Art

Letter from the President,
Lynne Taft-Draper



Each year, volunteer support groups donate time and effort in support of exhibitions, art acquisitions, and programs. The Flint Institute of Arts is deeply grateful to the members of the Friends of Modern Art and the Founders Society for their generous contributions.

The COVID-19 pandemic had a significant impact on organizations worldwide in 2020. Friends of Modern Art (FOMA) was no exception. For the health and safety of all—changes to FOMA programs and events were necessary including the cancellation of the annual member event, the 53rd Annual Flint Art Fair, and a shortened film program.

I would like to note, however, that prior to cancellation, Flint Art Fair event planning was successfully underway with artists applications up 20% over 2019, a new varied musical line up had been secured, and a great assortment of new as well as favored food vendors were signed up. The 2020 Flint Art Fair was on course to be the most successful in years, and it is the fervent hope of the FOMA Board and the Flint Art Fair Committee that we will be able to pick up where we left off next year for a fabulous 2021.

The FOMA Film Series, which ran between the weekend after Labor Day and March 8, when the series was suspended, logged a total attendance of 4,113, with an average of 158 patrons per week. Much of the credit for interest in the FOMA Film program goes to Michael Rucks, head of the FOMA film committee working in collaboration with FIA film curator Ed Bradley to book top-quality films. During fiscal year 2019-20, the highest total weekend attendance figures for individual titles were 230 patrons for the Academy Award-nominated comedy *Jojo Rabbit* (which turned out to be the season's final offering), 200 for the season-opening author biography *Tolkien*, and 196 for *The White Crow*, a drama about the defection of famed Russian ballet dancer Rudolf Nureyev. Another particularly successful weekend brought 311 viewers to the documentary *Framing John DeLorean* and the Shakespeare-inspired comedy *All Is True*.

FOMA's contributions to the Flint Institute of Arts during the fiscal year included catalogue support for *Beauty and Pain: Photographs by Nathalia Edenmont*, that included 19 monumental photographs by the Swedish artist; and exhibition support for the *Alexis Rockman: The Great Lakes Cycle*. Both exhibitions were delayed due to COVID-19 and were on view in the FIA galleries from July 11 through September 27, 2020. The exhibitions attracted 5,149 visitors to the FIA.

I would like to thank the members of the FOMA Board and the many volunteers who contributed their time and energy to help plan these valuable programs and events, and I look forward to a safe and successful 2021.

Friends of Modern Art was a sponsor of the exhibition *Alexis Rockman: The Great Lakes Cycle*.

Officers

Lynne Taft-Draper, *President*
Michael Rucks, *Vice President*
Jamile Lawand, *Secretary*
Michael Melenbrink, *Treasurer (interim)*

Board of Trustees

James Hart	Tim Kranz
Huseyin R. Hizirolgu	Ginny Rucks
Dr. Linda Johnson	James Shurter
Meghan Kelly	Ja-Neen Wooten

Financial Statement

Founders Society

Letter from the President,
James D. Draper



The Founders Society pledged \$37,000 in support of the Flint Institute of Arts during fiscal year 2019–20: \$20,000 for *The Four Seasons* exhibition, \$15,000 for the Graphics Gallery, and \$2,000 for the LeFleur Library. A check for \$37,000 was presented to the FIA after the end of our fiscal year.

Founders membership dues have been \$10 per year for the past decade, which included two complimentary passes to First Frost, our primary fundraising event. In January 2020 dues were raised to \$20 per year, which included two passes each to First Bloom and First Frost. A combo dues partnership with FOMA was also approved, which included membership in both organizations for \$30. In addition to Founders passes, the combo membership included FOMA film series tickets and passes for admission to the Flint Art Fair in June. Dues income for the fiscal year 2019–20 was \$4,000.

Founders hosted First Frost, our 14th annual event, exclusively in Isabel Hall this year the first weekend in November. This was a smaller venue than in all prior fairs. Our net revenue was \$12,226.

First Bloom: Artful Bling & Pleasing Things—our new spring time event modeled after First Frost, but with an emphasis on jewelry, accessories, and fashion-wear was first held as a one-day event in April 2018 at the Flint Farmers' Market. It netted \$1,200 and we wanted to go bigger and better. For spring 2019 Founders planned to transition it to a two-day event to be held at the new Flint Cultural Center Academy. Unfortunately, due to pandemic restrictions the event was cancelled.

Our travel and tours committee generated \$800 in income prior to the pandemic forced shutdown in the spring. There are no active tours or travel currently scheduled.

On December 2, 2019, we hosted our traditional holiday luncheon for all FIA staff members in Isabel Hall. It was Founders Society's way to thank the FIA staff for the many ways in which they help us fulfill our mission.

In past years, income received from our various fund-raising activities has enabled the Founders Society to meet our FIA pledges. We are confident that we will be able to fund the FIA's 2020–21 request to support the Graphics Gallery; however, due to the ongoing pandemic, our usual fund raising activities are curtailed and will not resume until the pandemic is no longer a threat and crowd restrictions are lifted. We look forward to resuming our activities in 2021 when it is safe to do so. Until then, the Founders Society as an organization remains strong and is committed to the support of the Flint Institute of Arts for now and into the future.



Founders Society was a sponsor of Philip Haas' exhibition *The Four Seasons*.

Officers

James Draper
President
Bob Turley
Vice President
Candi Pfaff
Recording Secretary
Carol Turley
Corresponding Secretary
Andrew Watchorn
Treasurer
Sheila Smith
Immediate Past President

Board of Trustees

Jeneil Wright Applegate
Ann Chan
Chris Dunas
Sheila Epps
Cathy Fetters
Billie Fisher
Colleen Ford
Lestine Gheresus
Maggie Hart
Hulya Hiziroglu
Judith Ingram
Christine Jones
Lisa Land
Jean Liming-Dundas
Perry Ann Owen
Saroja Reddy
Sherry Schlinker
Sharon Simeon
Audrey Stephens
Robert Van Duyne
Mary Van Duyne
Susan Yeotis
Lindsey Younger
Trish Zito-Smith

Board of Directors
Flint Institute of Arts
Flint, Michigan

Independent Auditor's Report

We have audited the accompanying financial statements of Flint Institute of Arts which comprise the statement of financial position as of June 30, 2019, and the related statements of activities, functional expenses, and cash flows for the year then ended, and the related notes to the financial statements.

Management is responsible for the preparation and fair presentation of these financial statements in accordance with accounting principles generally accepted in the United States of America; this includes the design, implementation, and maintenance of internal control relevant to the preparation and fair presentation of financial statements that are free from material misstatement, whether due to fraud or error.

Our responsibility is to express an opinion on these financial statements based on our audit. We conducted our audit in accordance with auditing standards generally accepted in the United States of America. Those standards require that we plan and perform the audit to obtain reasonable assurance about whether the financial statements are free of material misstatement.

An audit involves performing procedures to obtain audit evidence about the amounts and disclosures in the financial statements. The procedures selected depend on the auditors' judgment, including the assessment of the risks of material misstatement of the financial statements, whether due to fraud or error. In making those risk assessments, the auditor considers internal control relevant to the entity's preparation and fair presentation of the financial statements in order to design audit procedures that are appropriate in the circumstances, but not for the purpose of expressing an opinion on the effectiveness of the entity's internal control. Accordingly, we express no such opinion. An audit also includes evaluating the appropriateness of accounting policies used and the reasonableness of significant accounting estimates made by management, as well as evaluating the overall presentation of the financial statements.

We believe that the audit evidence we have obtained is sufficient and appropriate to provide a basis for our audit opinion.

In our opinion, the financial statements referred to above present fairly, in all material respects, the financial position of Flint Institute of Arts as of June 30, 2019, and the changes in its net assets and its cash flows for the year then ended in accordance with accounting principles generally accepted in the United States of America.

As described in Note 1 to the consolidated financial statements, Flint Institute of Arts changed its method of accounting for net assets, investment expense, and functional expenses in 2019 as required by the provisions of FASB Accounting Standards Update 2016-14 Presentation of Financial Statements of Not-for-Profit Entities. Our opinion is not modified with respect to that matter.

We have previously audited Flint Institute of Arts' June 30, 2018, financial statements, and we expressed an unmodified audit opinion on those audited financial statements in our report dated March 20, 2019. In our opinion, the summarized comparative information presented herein as of and for the year ended June 30, 2018 is consistent, in all material respects, with the audited financial statements from which it has been derived.

Our audit was conducted for the purpose of forming an opinion on the financial statements as a whole. The Schedule of Investments is presented for purposes of additional analysis and is not a required part of the financial statements. Such information is the responsibility of management and was derived from and relates directly to the underlying accounting and other records used to prepare the financial statements. The information has been subjected to the auditing procedures applied in the audit of the financial statements and certain additional procedures, including comparing and reconciling such information directly to the underlying accounting and other records used to prepare the financial statements or to the financial statements themselves, and other additional procedures in accordance with auditing standards generally accepted in the United States of America. In our opinion, the information is fairly stated in all material respects in relation to the financial statements as a whole.



4468 Oak Bridge Dr.
Flint, MI 48532
810.732.3000
800.899.4742
810.732.6118 fax

Yeo & Yeo, P.C.

Flint, Michigan
March 26, 2020

Statement of Financial Position

June 30, 2020 (with summarized comparative information for 2019)

	Operating Fund	Plant Fund	Project Fund	Permanent Collection Fund	Endowment Fund	Total All Funds	
						2020	2019
						Assets	
Current assets							
Cash and cash equivalents	\$ 2,311,781	\$ -	\$ -	\$ -	\$ -	\$ 2,311,781	\$ 2,126,698
Accounts receivable	119,286	-	-	-	-	119,286	122,627
Contributions receivable, current	-	-	108,335	-	52,595	160,930	311,668
Inventory	94,045	-	-	-	-	94,045	123,537
Prepaid expenses	41,487	-	-	-	-	41,487	101,487
Total current assets	2,566,599	-	108,335	-	52,595	2,727,529	2,786,017
Long-term assets							
Fixed assets	-	22,684,141	-	-	-	22,684,141	23,490,843
Contributions receivable	-	-	-	-	16,648	16,648	-
Intangible asset	-	25,000	-	-	-	25,000	25,000
Permanent collection	-	-	-	1	-	1	1
Interest in income trusts	-	-	-	-	1	1	1
Trusts held by third party	-	-	-	-	1,962,475	1,962,475	2,001,776
Investments	488,300	-	-	598,172	28,166,144	29,252,616	27,571,883
Total long-term assets	488,300	22,709,141	-	598,173	30,145,268	53,940,882	53,089,504
Total assets	\$ 3,054,899	\$ 22,709,141	\$ 108,335	\$ 598,173	\$ 30,197,863	\$ 56,668,411	\$ 55,875,521
Liabilities and Net Assets							
Liabilities							
Current liabilities							
Accounts payable	\$ 17,760	\$ -	\$ -	\$ -	\$ -	\$ 17,760	\$ 65,826
Accrued expenses and withheld taxes	162,672	-	-	-	-	162,672	118,863
Refundable advance	649,212	-	-	-	-	649,212	-
Capital lease obligation, current portion	-	7,162	-	-	-	7,162	7,162
Deferred revenue	105,221	-	-	-	-	105,221	37,419
Total current liabilities	934,865	7,162	-	-	-	942,027	229,270
Long-term liabilities							
Capital lease obligation, net of current portion	-	14,920	-	-	-	14,920	22,082
Total liabilities	934,865	22,082	-	-	-	956,947	251,352
Net Assets							
Without donor restrictions							
Undesignated	2,120,034	-	-	-	14,405,995	16,526,029	16,801,478
Invested in fixed and intangible assets, net of related debt	-	22,687,059	-	-	-	22,687,059	23,486,599
Total without donor restrictions	2,120,034	22,687,059	-	-	14,405,995	39,213,088	40,288,077
With donor restrictions							
Perpetual in nature	-	-	-	-	12,430,687	12,430,687	11,901,100
Purpose restrictions	-	-	-	598,173	3,291,938	3,890,111	3,123,324
Time-restricted for future periods and specific purposes	-	-	108,335	-	69,243	177,578	311,668
Total with donor restrictions	-	-	108,335	598,173	15,791,868	16,498,376	15,336,092
Total Net Assets	2,120,034	22,687,059	108,335	598,173	30,197,863	55,711,464	55,624,169
Total Liabilities and Net Assets	\$ 3,054,899	\$ 22,709,141	\$ 108,335	\$ 598,173	\$ 30,197,863	\$ 56,668,411	\$ 55,875,521

Statement of Activities

June 30, 2020 (with summarized comparative information for 2019)

	Without Donor Restrictions	Without Donor Restrictions	With Donor Restrictions	With Donor Restrictions	With Donor Restrictions	Without Donor Restrictions	With Donor Restrictions	Total All Funds	
	Operating Fund	Plant Fund	Project Fund	Permanent Collection Fund	Endowment Fund	2020	2019	2020	2019
	Revenues, Gains, and Other Support								
Public support									
Contributions	\$ 1,439,503	\$ -	\$ 50,171	\$ -	\$ 94,749	\$ -	\$ 1,065,429	\$ 2,649,852	\$ 4,354,006
Property tax income	1,871,548	-	-	-	-	-	-	1,871,548	1,664,832
Bray and Pierson trust distributions	23,325	-	-	-	-	-	-	23,325	84,607
Community Foundation trust distributions	507,112	-	-	-	-	-	-	507,112	495,234
Total public support	3,841,488	-	50,171	-	94,749	-	1,065,429	5,051,837	6,598,679
Revenue									
Museum shop and cafe sales	231,118	-	-	-	-	-	-	231,118	230,086
Cost of goods sold	(171,466)	-	-	-	-	-	-	(171,466)	(123,930)
Gross profit	59,652	-	-	-	-	-	-	59,652	106,156
Memberships	127,160	-	-	-	-	-	-	127,160	275,727
Tuition	327,497	-	-	-	-	-	-	327,497	347,628
Ticket sales	17,467	-	-	-	-	-	-	17,467	60,151
Investment income	3,006	-	-	-	17,328	-	435,607	455,941	550,817
Net realized gain (loss) on investments	(997)	-	-	-	-	-	601,346	600,349	1,052,544
Miscellaneous income	155,436	-	-	-	-	-	-	155,436	281,248
Total revenue	689,221	-	-	-	17,328	-	1,036,953	1,743,502	2,674,271
Total public support and revenue	4,530,709	-	50,171	-	112,077	-	2,102,382	6,795,339	9,272,950
Net assets released from restriction									
	102	50,171	(50,171)	(102)	-	-	363,789	(363,789)	-
Expenses and losses									
Program services									
Classes	658,404	165,644	-	-	-	-	-	824,048	835,507
Public information	707,222	27,223	-	-	-	-	-	734,445	759,692
Permanent collections	970,958	182,254	-	-	-	-	-	1,153,212	1,045,106
Exhibitions	847,003	311,446	-	-	-	-	-	1,158,449	1,163,505
Museum shop	378,520	45,218	-	-	-	-	-	423,738	411,950
Programs	1,029,631	154,569	-	-	-	-	-	1,184,200	1,054,067
Total program services	4,591,738	886,354	-	-	-	-	-	5,478,092	5,269,827
Supporting services									
Management and general	1,182,202	36,451	-	-	-	-	-	1,218,653	1,213,456
Fundraising	187,823	-	-	-	-	-	-	187,823	235,058
Total supporting services	1,370,025	36,451	-	-	-	-	-	1,406,476	1,448,514
Total expenses	5,961,763	922,805	-	-	-	-	-	6,884,568	6,718,341
Change in net assets before other changes in net assets	(1,430,952)	(872,634)	-	(102)	112,077	363,789	1,738,593	(89,229)	2,554,609

Contributions

Annual Appeal

Ms. Velma Adams
 Ms. Denise Ahonen
 Mrs. Dolores R. Allen
 Mrs. Catherine Andresen
 Anonymous
 Steven & Valarie Bailie
 Carroll Baker & Kimberly Roberson
 Mr. & Mrs. David F. Barbour
 Mr. David J. Barkey
 Mr. & Mrs. Kelly B. Beardslee
 Dr. & Mrs. William D. Beck & Kristen
 Mrs. Doris Beebe
 Mr. Jeffrey Bellairs
 Mr. & Mrs. Stephen Bernstein
 Mrs. Rosemary Bigelow
 Jane Bingham
 Dr. Cathy O. Blight & Mr. Edward B. Davison
 Susan Steiner Bolhouse & William S. Ballenger III
 Miss Sheryl Brown
 Mrs. Edmund Brownell
 Ginanne, Vladimir, Theo & Nora Brownell Mitic
 Howard & Virginia Bueche
 Dr. & Mrs. Robert Burger
 Ms. Rebecca Burr
 Mr. & Mrs. Michael Carr
 Mr. & Mrs. Bruce T. Colasanti
 Mrs. Mary Coleman
 Mr. & Mrs. Chapin Cook
 Mr. & Mrs. Fred Cross
 Daniel & Carol Cruz
 Dr. & Mrs. Michael Danic
 Lorretta Davis & Harold Ford
 Ms. Judy Dawson
 The Day Family
 Ms. Monique Desormeau
 Ms. Stephany R. Diana & Mr. Dennis Zawol
 Mrs. Beverly J. Dillon
 Ms. Jeanne Doves
 Mr. Robert F. Dueweke
 Mr. Ryan M. Eashoo
 Ms. Clare Evans
 Ms. Bonnie Ferguson
 FIA Security
 Ms. Nora G. Fisher
 Mr. & Mrs. Ed Fizell
 Mr. & Mrs. Richard Fortier - Fortier Family Foundation
 Ms. Laura Friesen & Mr. Bruce Green
 Mr. John R. Gazall
 Ms. Patricia Gebhardt
 Mr. Thomas M. Gervasi
 Ms. Lee Giacalone
 Douglas & Susan Goering
 Mrs. Carolyn Goetz
 Donna Mooney Graham
 Mr. Earl E. Gravin & Ms. Julia Sullivan, donor-advised grant
 Mrs. Bobbie J. Greer

Ms. Peggy Hale
 Mr. & Mrs. Joel H. Harris
 Mr. John Hemingway & Mrs. Connie Palmer
 Ms. Annetta Hendrickson
 Mr. & Mrs. Edward G. Henneke
 Rachael & Nate Holstege
 Mr. Larry D. Howell
 Mr. & Mrs. Francis Hudson
 Ms. Lynne Hurand
 Dr. Susumu Inoue
 Mr. & Mrs. Andrew Isola
 Mr. & Mrs. James N. Johnson
 Ms. Kitty Kelly
 Mr. James R. Kettler
 Mr. Mike Kinnunen
 Dr. Alan Klein
 Mr. & Mrs. Norman Kleiner
 Mr. Wayne W. Knecht
 Sarah & Wesley Kohn
 Mr. Miles Lam
 Rev. Reginald V. Lancaster & Dr. Karen R. Wilkinson
 Mrs. Linda LeMieux
 Mr. & Mrs. Carl A. Leser
 Mr. & Mrs. Thomas B. Lillie
 Mr. & Mrs. Kenneth Lindebrekke
 Mr. & Mrs. Glenn Lysinger
 Ms. Maureen MacVay
 Ms. Jeanette R. Mansour & Mr. Joe Green, in memory of William & Claire White
 Ms. Marjorie Markon
 Ms. Carol Masse
 Mr. & Mrs. David S. McCredie
 Mrs. Helen G. Millhouse
 Mrs. Patricia Minshall
 Ms. Barbara Mirsky
 Mr. Thomas J. Mitchell
 Ms. Marlene Morris
 Ms. Lori Motley
 Mr. & Mrs. Alexander C. Murray
 Ms. Natalie Napier
 Olmsted Associates, Inc.
 Ms. Carole A. Pappas
 Mr. H. Michael Parker
 Ms. Roberta Parkhill
 Ms. Lynn Penning
 Ms. Jacqueline Piechowski
 Mr. Richard Pierce & Ms. Laurie Pierce
 Mrs. Karan A. Pinkston
 Dr. & Mrs. Mark Plucer
 Mrs. Fouad Rabiah
 Mr. Richard Ratner
 RE/MAX EDGE
 Ms. Barbara Reehl
 Mr. & Mrs. A. Davison Rice
 Mr. & Mrs. James P. Ricker
 Mr. John L. Riegle, Jr.
 Mr. & Mrs. Michael J. Riha
 Mrs. Vanessa Robar
 Dr. & Mrs. Paul Roetter
 Mr. & Mrs. Paul Rozycski
 Drs. Michael & Virginia Rucks
 Mr. & Mrs. Paul Runyan

Ms. Elisabeth Saab & Mr. Chad Hansen
 Mr. & Mrs. Khalil M. Saab
 Mr. Marshall H. Sanders & Dr. Sharon A. Simeon
 Dr. & Mrs. Frederick C. Schreiber
 Dr. & Mrs. Paul E. Schroeder
 Mr. Larry D. Howell
 Mr. & Mrs. Howard S. Schultz
 Chuck & Kathryn Sharbaugh
 Donald & Ann Skunda
 Dr. Ernestine R. Smith
 Mr. & Mrs. James Spangler
 Ms. Shelly Spivack
 Mrs. Debra Spurgeon
 Miss Barbara Stewart
 Mr. & Mrs. Norm Stewart
 Dr. Alan Klein
 Ms. Suzanne Sugden
 Mr. Michael Dingman & Mrs. Susan Sumner Dingman
 Dr. & Mrs. Thomas Svitkovich
 Ms. Christine Thomas
 Mrs. Ruth P. Thrash
 Mr. & Mrs. Roger Timm
 Ms. Jane B. Trotter
 Dr. & Mrs. Frederick VanDuyne
 Mr. & Mrs. Robert J. VanDuyne
 Mr. Marcos A. Vargas
 Mr. & Mrs. Rob Vogt
 Mr. & Mrs. Donald Walker
 Mr. & Mrs. Gerald L. Walters
 Mr. & Mrs. Clair Ward
 Alan & Jean Weamer
 Mr. & Mrs. Richard C. Weiermiller
 Dr. & Mrs. Jay A. Werschky
 Ms. Mary E. Whaley & Mr. Rick Kroeger
 Mr. & Mrs. Ridgway H. White
 Ms. Mary Whitlock
 Mr. & Mrs. Tom Wickham
 Dr. & Mrs. James Williams III
 Dr. Sue Wisenberg
 Judge & Mrs. Thomas C. Yeotis

Art School

BorgWarner Foundation
 Mrs. Dolores R. Allen, in memory of my husband, Marvin Allen
 Art Alliance for Contemporary Glass
 Arthur G. Bishop Charitable Trust
 Ms. Christa Azar
 Steven & Valarie Bailie
 Steven Bailie, in honor of Valarie Bailie - For all of her hard work maintaining the membership at the FIA
 Susan Steiner Bolhouse & William S. Ballenger III
 Ms. Jeanne Dodd & Mr. Robert Streadwick
 Mr. David A. Fischer
 Dr. Gail Ganakas Fund of the Community Foundation of Greater Flint

Genesee Valley Rotary Club
 Heart of Neiman Marcus Foundation Fund of Communities Foundation of Texas
 Mrs. Pamela Hicks
 The Isabel Foundation
 Charles and Townes Miller
 Ms. Carole A. Pappas, in memory of Arthur & Bess Hurand
 Mr. & Mrs. Victor Rabinkov
 Ms. Shirley Reeve
 Marshall H. Sanders, Jr., in honor of Dr. Sharon A. Simeon
 Ms. Christa M. Siegel
 James A. Welch Foundation
 Mr. & Mrs. Robert Ziegler

Art School Endowment Fund

Ms. Lori Lamoreaux & Mr. Craig Lamoreaux
 Ms. Natalie Napier
 Mrs. Sharon Rickard
 Dr. Randle Samuels & Ms. Gail Offen
 Mr. & Mrs. Mark A. Schwartz

Collections

Biggby Coffee
 Mrs. Carol Jacoby Nederlander, in honor of John Henry for giving a tour
 Dr. Jamile T. Lawand, to purchase the Dr. Sarah Jordan Lippert Vestibule
 Ms. Sura Levine
 Martha S. Piper Charitable Fund
 Mr. Randolph P. Piper, purchased *Fleurs de Printemps* by Albert-Emile Artigue, "This gift is in memory and honor of all the girls and women of my life"
 Mr. & Mrs. Mark Piper
 Ms. Martha Piper
 Mr. & Mrs. Howard S. Shand

The Contemporaries Sponsors

Caudill Thornquist Group

The Contemporaries Members

Mr. Lee Allen & Ms. Jessica Walker
 Mr. Ryan M. Eashoo
 Mr. Torchio Feaster & Mrs. Rosalyn Maben-Feaster
 Mr. Kristopher Johns & Ms. Vanessa Ferguson
 Mrs. Camille Koger-McCree & Mr. Kyle McCree

Mr. & Mrs. Brian Larkin
 Mrs. Jennifer Lasco
 Mr. John T. McAlear
 Ms. Elisabeth Saab
 Miss Jenette Schanick
 Ms. Elizabeth Sevick
 Ms. Karen Sleno
 Mr. Dale K. Weighill & Mr. Sang Truong
 Ms. Alaina Wiens
 Mr. Stephen Zulinski

Expansion Project Endowment & Equipment Funds Contributors

Mr. Christopher Carr
 Sheldon & Barbara Cohn Philanthropic Fund
 Community Impact Fund of the Community Foundation of Greater Flint, in memory of William S. White
 Mr. & Mrs. Robert Florine
 Ms. Margaret Greene, in honor of Art House Lectures & Tours
 Ms. Lynn A. Hampton
 Mr. & Mrs. Daniel S. Harrett
 Mr. Joel Hayden
 Mr. & Mrs. John B. Henry, in memory of Estelle Burgett, Donald Williamson, James Applegate, and Elizabeth Neithercut
 Ms. Ethel Hooker
 Mr. & Mrs. Horace Hull, in memory of Estelle Burgett
 Jewish Historical Society of Michigan, for a spectacular tour
 Mr. & Mrs. Paul Kelley, in memory of Estelle Burgett
 Dr. Jamile Trueba Lawand
 Ms. Kerstin Lawrence
 Mr. Max Lepler & Mr. Rex L. Dotson
 Tiffany Lovett
 Frank W. Lynch & Roberta Jane Lynch Endowed Family Fund
 The Mackey Foundation
 Mr. & Mrs. Gordon Moss
 Mr. Walter Nagel - purchase of a Theater Seat
 Mr. H. Michael Parker - Purchase of Sandblaster & Fusing Kiln
 Ms. Roberta Parkhill
 Donor advised grant from William H. Piper - Flint Community Fund of the Community Foundation of Greater Flint
 William H. Piper Fund- Flint Community Fund of the Community Foundation of Greater Flint, in memory of Edward J. Neithercut

Mr. & Mrs. Carl Riseman
 Mr. Allen Salyer
 Estate of Grayce M. Scholt
 Chuck & Kathryn Sharbaugh
 Sahar Abdallah, Sorensen Gross Company
 Wells Family Foundation
 Wines for Humanity

Education

Mrs. Edmund Brownell
 Charles Stewart Mott Foundation
 Mr. James R. Chintyan
 Community Foundation of Greater Flint
 Kara and Mike Drainville
 Flint Cultural Center Corporation
 Drew & Cathy Gentry
 The Hurand Family
 Mona & Samasandrapalya Kiran
 James & Harriet Lay
 Literacy for Life Fund of the Community Foundation of Greater Flint
 Olivia Maynard & Olof Karlstrom
 Thomas J. Mitchell
 Nartel Family Foundation
 Jay and Marilyn Nelson
 Ms. Jacquie Osborn & Mr. Jim Osborn
 Rama D. Rao, MD
 Roy, Noye & Warren, CPA, P.C.
 Ruth Mott Foundation
 The Sheppy Dog Fund
 Socially Yours Design
 Woodhaven Senior Community

Drs. Kiran & Laxmi Devisetty
 ELGA Credit Union
 Flint Area Chapter of The LINKS, Inc.
 Flint Cultural Center Corporation
 Founders Society
 Friends of Berston
 Eric Gasper - Edward Jones
 Gill-Roy's Hardware
 Dr. Raymond & Mrs. Jill Gist
 Glastender
 Grace Emmanuel Baptist Church
 University of Michigan-Flint
 Pierians, Inc.
 Hamilton Community Health Network
 Mrs. Maggie Hart
 Mr. Louis A. Hawkins
 Dr. & Mrs. John Hebert
 Ms. Lynne Hurand
 Hurley Foundation
 Gary K. Johnson, M.D., M.P.H.
 Timothy & Melinda Johnson - Hi-Tech Protection, Ins.
 Mrs. Nina Jones-Lewis
 Kettering University
 Kathryn Koegel
 Landaal Packaging Systems
 Law Offices of Heather V. Burnash, PLLC
 Dr. Jamile T. Lawand & Mr. Barry J. Carr
 Alvern & Theresa (Stephens) Lock
 Dr. Ramotsumi & Mrs. Velynda Makhene
 Jermarx & Tabitha Marsh
 Mass Transportation Authority
 Attorney Eric McCormick
 Sean & Eureka McCormick
 Reverend John & Mrs. Clydell McKenney
 McLaren Flint
 Miller Road Applebees
 Roland & Cynthia Morsee
 Mott Community College
 Drs. Bobby & Nita Mukkamala
 Attorney Matthew L. Norwood
 Eric S. Peterson & Associates
 Mortgage Lenders, LLC
 Plante Moran
 PNC Bank
 Shelley Spivack & Linda Pylypiw
 Drs. Rama & Venkat Rao
 Mr. Milton & Dr. Brenda Rogers-Grays
 Roy, Noye & Warren, CPA, P.C.
 Dr. & Mrs. Ray & April Rudoni
 Dr. Dan & Mrs. Mary Ryan
 Ann & Khalil Saab
 Tim & Martha Sanford
 Mr. Boaz & Mrs. Cleorah Scruggs-DeBose
 The Serra Foundation (Al Serra Auto Plaza)
 Chuck & Kathryn Sharbaugh
 Dental Care Team

Dr. Robert & Mayor Susan Soderstrom
 Ms. Shelley R. Spivack & Mr. Justin Scanlon
 Woodrow & Reta Stanley
 Team One CU
 Town Center Family Dental-Dr. Lori Thomas, Dr. Tim Vanitvelt & Dr. Richard Halliday
 Tom & DeAnn Townsend
 Terry Turner
 Patrick & Gloria Tyus
 University of Michigan-Flint
 Valley Area Agency on Aging
 Dr. Jay & Jan Werschky
 The Williams Firm, P.C.
 Todd & Lisa Wiseley

Exhibition Sponsors

Founders Society
 Security Credit Union

Flint Print Club

Mr. & Mrs. Michael J. Behm
 Mr. & Mrs. Ryan & Tracy Bessert
 Dr. James Cohen & Ms. Caroline Kellogg
 Mr. Joseph Coriaty
 Mr. & Mrs. F. James Cummins
 Mr. Greg Edquist
 Mr. & Mrs. Jeff Garrett
 Mr. & Mrs. Jonathan Glab
 Ms. Ronda W. Goldfarb
 Mr. Daniel Greenia & Ms. Nancy Greenia
 Mr. & Mrs. Walter Griffin
 Mr. Kevin Guy
 Mr. Mark Hamel & Mr. Mike Green
 Neal & Amanda Hegarty
 Mr. & Mrs. John B. Henry
 Mr. & Mrs. Lee Hoyt
 Mr. & Mrs. Gary J. Hurand
 Mr. & Mrs. Josh Hurand
 Ms. Lynne Hurand
 Ms. Sara Hurand & Mr. Elie Weiss
 Mr. & Mrs. James N. Johnson
 Ms. Elizabeth A. Kaplan & Mr. Rex Donahay
 Mr. & Mrs. Christopher S. Kelly, Sr.
 Dr. Jamile T. Lawand
 Mr. Max Lepler & Mr. Rex L. Dotson
 Mr. Michael Martin & Mr. Bryan Paris
 Sean & Eureka McCormick
 Mr. & Mrs. David S. McCredie
 Mr. Michael J. Minto
 Mr. Thomas J. Mitchell
 James R. & Helen Sue Morgan
 Drs. Bobby & Nita Mukkamala
 Dr. & Mrs. Kienan F. Murphy
 Mr. Patrick Murray & Mr. James Edwards
 Mr. & Mrs. Edward A. Ogul

Mr. & Mrs. Peter Ott
Mr. H. Michael Parker
Mr. & Mrs. Gary Philpott
Mr. Wayne Pickvet & Mr. Bruce A. Barrett
Mr. & Mrs. Mark Piper
Dr. & Mrs. Mark Plucer
Mr. & Mrs. Adam Reigle
Mrs. Betty Salimi
Mr. & Mrs. Timothy C. Sanford
Dr. D.J. Trela & Dr. David Bailey
Mr. Dale K. Weighill & Mr. Sang Truong
Ms. Kathleen A. Weiss & Dr. Scott A. Graves M.D.
Ms. Mary Whitlock
Mr. & Mrs. Dean Yeotis
Mr. Mike D. Smith & Ms. Trish M. Zito-Smith

Gift of Flint Print Club

Mr. & Mrs. Gary J. Hurand for Sara Hurand & Elie Weiss and Josh & Ashley Hurand

Film Society Sponsors

Mr. Carroll G. Baker & Ms. Kimberly Roberson
Mrs. Edmund Brownell
Dort Financial Credit Union
Guardian Security Services, Inc.
Mr. & Mrs. John B. Henry
Ms. Chene Koppitz
Merrill Lynch
Michigan Radio
Dr. & Mrs. Mark Plucer
Ms. Linda L. Pylypiw
Drs. Michael & Virginia Rucks
Dr. James Scott & Ms. Diane Piontkowski

Film Society Members

Mr. & Mrs. David G. Babieracki
Mr. William S. Ballenger III & Susan Steiner Bolhouse
Mr. & Mrs. Richard Beauchamp
Mr. & Mrs. Ted Bolander
Mrs. Cynthia Buckel
Mr. & Mrs. Tom E. Butts
Albert Kevin Comins
Samuel & Darylee Coplin
Mr. & Mrs. Harry Cybulski
Carol Egloff
Ms. Marcia L. Elbert
Ms. Patricia Emeryonu
Ms. Nora G. Fisher
Dr. & Mrs. Melvin Flamenbaum
Mr. Richard W. Fortner
Dr. Brenda Fortunate & Mr. Edward White
Ms. Virginia Gaffney

Ms. Kathleen George
Mr. & Mrs. Roger Gilmour
Tom Glasscock & Helen Bas
Mr. & Mrs. Bill Glowney
Rhina & Gene Griffel
Imane Hakam
Mr. & Mrs. Joel H. Harris
Mr. John Hemingway & Mrs. Connie Palmer
Mrs. Ernie Hermann
Mr. & Mrs. Dennis House
John T. Hubard
Ms. Lynne Hurand
Ms. Elizabeth Ireland-Curtis
Mr. & Mrs. Franklin H. Kasle
Mr. & Mrs. Norman Kleiner
Mr. & Mrs. Lee LaVictoire
League of Interesting Women
Mr. & Mrs. Richard Lutgens
Ms. Susan M. Mangapora
Ms. Carol Masse
Sean & Eureka McCormick
Mr. William K. McDonald
Ms. Ruth A. McLearn
Mr. Shai M. Brosh & Ms. Christine Mieloch
Ms. Christy Moore
Mr. Jim Newtown
Mr. Michael Orr & Ms. Darla Orr
Ms. Suzanne Owen
Ms. Alta Parsons
Ms. Orlene Peresta
Ms. Rodica Phillips
Ms. Yolinda Pierce & Ms. Delores Johnson
Ms. Sally Pierson
Mr. & Mrs. Roy Sabo
Mike & Judy Sanford
Ms. Marcia Sauvie
Mr. Richard T. Schroeder
Mr. & Mrs. Mark A. Schwartz
Ms. Marsha V. Schwarz
Mr. & Mrs. Bob Shaw
Dr. Janice Shimoda
Ms. Joan W. Smalley
Ms. Sandra K. Smith
Ms. Shelley R. Spivack & Mr. Justin Scanlon
Mr. Michael D. Stanton
Mr. Michael Dingman & Mrs. Susan Sumner Dingman
Ms. Elizabeth Svoboda
Ms. Carolyn Szarolletta
Dr. & Mrs. L. VanWinkle, Jr.
Ms. Jolyn Vita
Dr. & Mrs. Stuart B. Weiner
Mr. & Mrs. David Wharton
Ms. Mariilyn Willingham
Ms. Janette A. Wilson
Mr. & Mrs. Mike Wilson
Mr. Dale F. Wolfgram

General Contributions

Drs. Patrick & Theresa Atkinson

Mr. & Mrs. Jeffrey Attwood
Bank of America
Mr. John Beach
Mr. & Mrs. Kelly B. Beardslee
Dr. & Mrs. William D. Beck & Kristen
Mr. & Mrs. Robert L. Bessert
Jane Bingham
Mr. & Mrs. Joe Blakely
Mr. Leo J. Brennan
Dr. & Mrs. Alexander Chan
The Chan Family
Dr. Elizabeth Collardey
Community Foundation for Southeast Michigan
Ms. Helen Cothrel
Mr. & Mrs. Michael Dawson
Mrs. Loretta C. Ellwood
Mr. & Mrs. John Fey
Mr. Bruce Focht
William David Harmon
David & Donna Hart
Ms. Helen Hierta
Ms. Carol Higgins
Mr. & Mrs. Py Hockin
Huntington Bank - Huntington Free Saturdays
Ms. Lynne Hurand - Sponsor of FIA Magazine 20/21
Dr. & Mrs. John S. Isaac
Michael & Kay Kelly
Jengde Lin & Tingchi Kuo
McLaren Health Care - Hot Shop Demonstration Days
Mrs. Robert C. Morgan
Ms. Stephanie Nehmer
Mr. & Mrs. Jay Nelson
Ms. Jacquie Osborn & Mr. Jim Osborn
Anna Paulina Foundation, in memory of Edward & Elizabeth Neithercut
Mr. & Mrs. Jeremy Piper
Dr. & Mrs. Mark Plucer
Mr. & Mrs. Michael J. Riha
Dr. & Mrs. Paul E. Schroeder
Mr. & Mrs. Howard S. Shand
Ms. Christa M. Siegel
Ms. Linda Smith
Mrs. Bonnie Swanson
Ms. Kristen Symons
Massoud Tavakoli
Ms. Leann Underhill
Mr. & Mrs. Ridgway H. White

Gift of an FIA Membership

Ms. Jennifer Branch for Jennifer Arnold Champagne
Mr. James R. Chintyan for Crystal Carman
Ms. Patricia J. Cleland for Sandy Malnar
Ms. Susan Diebel for Kris & Roberta Libstaff

Mrs. Rosemary Emerton for Ava & Olivia Dudley
Flint Classroom Support Fund for teachers in the Flint District
Ms. Patricia Gage & Mr. William McKay for Julie & Dave Kunc
Mr. Louis A. Hawkins for Jacob & Remonia Hawkins
Ms. Ann Helmer for Annette Adams
Ms. Shayna Hosler & Mr. James Mason for Ivan Gibbs
Mr. & Mrs. Gary J. Hurand for Sara Hurand & Elie Weiss and for Josh & Ashley Hurand
Mrs. Gail D. Hutchison for Thom, Micah, Avery Hutchison
Connor Kelly for Virginia Gaffney
Ms. Chene Koppitz for Payton McCoy and for Olivia Walsh
Mr. & Mrs. Bill Larsen for Marjorie Larsen
Ms. Kerstin Lawrence for Martha Calhoun
Ms. Angela Libkie for Donna Shinn
Mrs. Audrey McDonough & Ms. Shanna McDonough for Ned & Susan DeGalan
Mr. & Mrs. James Mikulski for Mary Burdis
Ms. Patricia O'Berry for Nancy Kursik
Ms. Marissa Pierce for Marilyn Twine
Mrs. Fouad Rabiah for Victoria Ybarra
Michael, Natalie, Finley & Felix Romanello for Kathy Taliaferro & Edwin Gassel
Ms. Sally Ross for Susan Ross
Ms. Joan W. Smalley for Lynn & Jerry Kerr
Mrs. Bonnie Swanson for Brent Swanson
Mr. & Mrs. Raymond Tchou for James & Barbara Hollins
Mr. & Mrs. Bruce Trevithick for Munnearah Taliman
Mr. Daniel Vernia for Sue Vernia

Grants & Trusts

Art Alliance for Contemporary Glass
Arthur G. Bishop Charitable Trust
Charles Stewart Mott Foundation
Community Foundation for Southeast Michigan
Dr. Gail Ganakas Fund of the Community Foundation of Greater Flint
The Isabel Foundation
Literacy for Life Fund of the Community Foundation of Greater Flint

Frank W. Lynch & Roberta Jane Lynch Endowed Family Fund
William H. Piper Fund - Flint Community Fund of the Community Foundtion of Greater Flint
Ruth Mott Foundation
The Sheppy Dog Fund
Susie's Hope
Viola E. Bray Charitable Trust
James A. Welch Foundation

Tributes & Memorials

In memory of Estelle Burgett

Mr. & Mrs. John B. Henry
Mr. & Mrs. Horace Hull
Mr. & Mrs. Paul Kelley

In memory of Marianne Chardoul Mair

Mr. & Mrs. Paul N. Chardoul

In memory of Elizabeth Nagel to support the Endowment Fund

Bavarian Inn Motor Lodge
Mr. & Mrs. Larry Butcher
DAP Products, Inc.
Mr. & Mrs. Mark Dewolf-Ott
Ms. Helen Donney
Ms. Ruthetta Dornbos
Mr. & Mrs. James Eckerman
Ms. Caroline Fisher
Mr. & Mrs. William Harti
Ms. Marcia Lacker
Mr. & Mrs. Allan Larsen, Jr.
Benjamin, Susan, & Jefferson McIntosh

Ms. Susan McKibben
Mr. Roland Mendoza
Mr. & Mrs. Dan Proctor
Mr. Christian Reer
Mr. William Schuler
Larry & Gail Toft, Kathy & Chris Duncan, Julie & Todd Hohwart, Amy & Brian Huebsch, John Toft
Mr. & Mrs. William Wegner

In memory of Elizabeth & Edward Neithercut

Mr. & Mrs. Howard J. Bueche
Mr. & Mrs. Joel H. Harris
Mr. & Mrs. John B. Henry
Mr. & Mrs. Joseph Higgins
Anna Paulina Foundation
Mr. & Mrs. Khalil M. Saab
Kathryn Sharbaugh
Dr. Jay & Jan Werschky

In memory of Bryan P. Pooler to support the Endowment Fund & Film Program

Ms. Julia Anderson
Anonymous
Ms. Peggy Day
Ms. Elizabeth Deming
Shelley Fisher & Robin Fisher
Ms. Erin Foster
Holly Middle School

Mr. & Mrs. Calvin Lounds
Mr. & Mrs. Ken Lounds
Ms. Susan E. MacKenzie
Dr. & Mrs. Richard Neuenfeldt
Newer Family
Mr. Brian Phelan
Mr. Brian Sanderson

In memory of Marie Sanders to support Educational Programs

Mrs. Lavonne Bomeli
Ms. Janet Cameron
Ms. Monique Desormeau
Ms. Daiva Devereaux
Ms. Patricia S. Duffy & Mr. Ralph Edwards
Loretta Davis & Harold Ford
Ms. Kathleen George
Ms. Lynne Hurand
Mr. & Mrs. Neil McPhee
Dr. & Mrs. Stuart B. Weiner

In memory of George & Betty Stevens to support the Endowment Fund

Ms. Lucinda Stevens & Mr. Carl Goldstein - purchase of Theater Seat

In memory of Mary Helen Taylor to support the Endowment Fund

Mrs. Rosemary R. DeCamp
Mr. & Mrs. James Lay
Mr. & Mrs. Randall Petrides
Dave, Isabel Rice & Family
Chuck & Kathryn Sharbaugh

In memory of Philip Timyan

Kathryn Sharbaugh

In memory of Linda Mishall Vanston

Anonymous
Ms. Mary Lou Applebee
Mr. & Mrs. John A. Brancheau
Mr. & Mrs. Peter R. Chisena, Jr.
Mr. & Mrs. William Delaney
Mr. Richard H. Ebbott
Fenton Chamber Ambassador Family
Mr. & Mrs. Michael Gohl
Mr. & Mrs. Duane B. Heilbronn
Mr. Fred Hinz & Ms. Ruby K. Richards-Hjorth
Ms. Carol R. Jankowski
Mr. & Mrs. Steve Lucky
Mr. & Mrs. Robert McIntyre
Mr. & Mrs. Michael Swartz
Mr. & Mrs. Terry Tupper

In memory of William S. White to support Art School Endowment

Mrs. Heather Barrett
Jane Bingham
Ms. Elizabeth T. Boris
Brindle's Janitorial - Paul, Adam & Staff
Dr. & Mrs. Robert Burger
Patrick & Twiss Butler
C. S. Mott Interns 2016

Ms. Delia Cappel
Ms. Annette M. Chamberlain
Dr. & Mrs. Alexander Chan
Chan Family Charitable Fund
Cline, Cline & Griffin PC
Community Impact Fund of the Community Foundation of Greater Flint
Council on Foundation's Staff & Board of Directors
Ms. Janelle Cousino
Mr. & Mrs. Marc Crumm
Stewart M. Dansby & Family
Gretchen & Ethan Davidson
Ms. Monique Desormeau
Mr. & Mrs. Paul Easter
The Debbie & John Erb Family Fund, donor-advised grant
Mark & Sheila Essenberg
Estate of William S. White
George Farah & Michelle Farah
Max M. & Marjorie S. Fisher
Foundation

FowlerHoffman LLC
Mr. & Mrs. Robert S. Fuller
James & Becky Gaskin
Gazall Lewis Architects
Ms. Edes P. Gilbert
Mr. & Mrs. Daniel Goodnow
Mr. Britton L. Gordon, Jr.
The Hagerman Foundation - Philip Hagerman & Jocelyn Hagerman
Mrs. Louise Hartwell
Mr. & Mrs. John B. Henry
Ms. Barbara L. Hill
Mr. & Mrs. Gary J. Hurand
Bruce Jeffrey
Ms. Jenan Jondy
Mr. & Mrs. James Keel
Kommareddi Family Fund of the Community Foundation of Greater Flint

Mr. Miles Lam
Mr. & Mrs. Phil & Kim Lawrence
Ms. Jennifer Liversedge
Ms. Jeanette R. Mansour & Mr. Joe Green
Mrs. Lisa Maxwell
Michigan Municipal League
Mary R. Morgan & David J. Callard
Mott Children's Health Center
Ms. Maryanne Mott
Mr. Samuel B. Passmore
Eric S. & Tammy S. Peterson
Terry K. Peterson & Scott Shanklin-Peterson
Mr. & Mrs. Jeremy Piper
Mr. & Mrs. Mark Piper
William H. Piper - Flint Community Fund of the Community Foundation of Greater Flint
Mr. & Ms. Daniel Richards
Sean & Katie Roberts
ROWE Professional Services Co
Ruth Mott Foundation
Mr. & Mrs. Khalil M. Saab

In honor of Lois Stanley's birthday

Ms. Ida L. Epstein

In honor of J.D. Winegarten's special birthday

Gary & Carol Hurand
In honor of Kathryn Wujciak & Roger Hess
Ms. Kristen Symons

Sacred Family Causes Foundation
Mr. & Mrs. Timothy C. Sanford
Schaffer & Combs, LLC
Chuck & Kathryn Sharbaugh
Ray Sinclair
Skypoint Ventures
Mr. & Mrs. Paul Smyth
Neil J. Sosin, Matthew Sosin, and Northern Equities Group
University of Michigan-Flint, College of Health Sciences
US Sugar
Tom and Elizabeth Vanhecke
Wade Trim, Inc.
Ms. April Wagner
Dr. Jay & Jan Werschky
Thomas E. White & Michelle F. White
The Widder Family
Todd L. Wiseley
Woolems Luxury Builders
Judge & Mrs. Thomas C. Yeotis

In memory of William S. White - Funds to purchase the Viola Frey sculpture

Tiffany Lovett

In memory of Donald Williamson

Mr. & Mrs. John B. Henry

In memory of Susan Wisnudel to support the Endowment Fund

Mr. & Mrs. David Fry
In honor of Joe Fitzryk
Ms. Anna Ellis

In honor of Gary & Carol Hurand's 50th wedding anniversary

Morry & Judy Weiss

In honor of Chief Theresa A. Stephens-Lock's Retirement to support the Endowment Fund

Mr. & Mrs. Robert Campbell
Ms. Phyllis Childress
Mr. & Mrs. Phillip Duncan
Mr. & Mrs. Charlie Etheridge
Mr. & Mrs. James Hawkins
Mr. Louis A. Hawkins
Alvern T. Lock, Jr.
Mr. Samuel Wells
Ms. Sheila Wells
Ms. Brenda R. Williams

In honor of Lois Stanley's birthday

Ms. Ida L. Epstein

In honor of J.D. Winegarten's special birthday

Gary & Carol Hurand

In honor of Kathryn Wujciak & Roger Hess

Ms. Kristen Symons

Membership

* denotes increased gift level

+ denotes Friends of Modern Art (FOMA) membership

Δ denotes Founders Society membership

Rubens Society (\$1,000 annually)

Business

Abbott's Meat Inc.
American Machining, Inc.
Big John Steak & Onion, Inc.
Fabiano Brothers, Inc.
Main Manufacturing Products
Merrill Lynch
The Sheppy Dog Fund
Sorensen Gross Construction Co.
Jason S. Wheatley, LLC

Individual

Mr. Glen Adams & Ms. Maria Gonzalez+Δ
Ms. Sandra Applegate
Mr. Carroll G. Baker & Ms. Kimberly Roberson+Δ
Mr. William S. Ballenger III & Ms. Susan Steiner Bolhouse
Frederick & Barbara Bellairs
Mrs. Beverly Bernard
Mr. & Mrs. Stephen Bernstein*+
Mr. & Mrs. Robert L. Bessert+Δ
Falding Bishop+Δ
Mr. Stewart Bolinger
Mrs. Edmund Brownell
Mr. & Mrs. Howard J. BuecheΔ
Ms. Betty Lou CampbellΔ
Dr. & Mrs. Alexander Chan+Δ
Mr. & Mrs. Sheldon H. Cohn*
Maureen & George Corser+
Mr. & Mrs. F. James Cummins+
Ms. Susan Davies & Mr. Tim Broderick
Mrs. Elizabeth Dean+
Mr. Dallas Dort & Mrs. Sharon A. Peterson Dort
Mr. & Mrs. James D. Draper+Δ
Mr. & Mrs. Robert Eastman
Mr. & Mrs. Harry L. Eiferle III+Δ
Mr. Ed FletcherΔ
Mr. & Mrs. Randolph Forester*
Dr. Brenda Fortunate & Mr. Edward White

Mr. & Mrs. Robert S. Fuller
Hank & Bonnie Graff
Mrs. Gordon J. Graham
Neal & Amanda Hegarty
Mr. William J. Hentgen+Δ
Mr. & Mrs. Timothy Herman
Mr. & Mrs. Joseph Higgins
Mr. & Mrs. Richard C. Hockstad
Mr. & Mrs. Gary J. Hurand+Δ
Ms. Lynne Hurand+Δ
Mrs. Judith Jacobson
Mr. & Mrs. James N. Johnson
Mr. & Mrs. Scott C. Johnson+Δ
Ms. Mollie Jones-Kotula*
Michael & Kay Kelly
Mr. & Mrs. Raymond J. Kelly III
Mrs. Harriet B. Kenworthy
Mr. James R. Kettler
Mr. & Mrs. Timothy H. Knecht
Mr. Joseph J. Kochanek*+Δ
Albert & Barbara Koegel
Ms. Kathryn Koegel+Δ
Dr. & Mrs. Prasad Kommareddi+Δ
Ms. Chene Koppitz & Mr. Mark Heggie*+Δ
Mr. & Mrs. Madhu Kulkarni
Dr. Jamile T. Lawand & Mr. Barry J. Carr+Δ
Mrs. Linda LeMieux
Mr. Max Lepler & Mr. Rex L. Dotson+
Prosecutor David & Therese Leyton
Mr. & Mrs. Mark L. Lippincott
Mr. & Mrs. Steven Low*+Δ
Ms. Jeanette R. Mansour & Mr. Joe Green
Sean & Eureka McCormick+Δ
Mr. & Mrs. David S. McCredie
Dr. & Mrs. Robert McMahan
Mr. & Mrs. William H. Moeller
Mrs. Robert C. Morgan
Drs. Bobby & Nita Mukkamala+Δ
Mr. Patrick Murray & Mr. James Edwards+Δ
Mr. Mark E. Neithercut*
Mr. & Mrs. Jay Nelson
Dr. & Mrs. David A. Noffert
Mr. H. Michael Parker+Δ
Ms. Marissa Pierce*
Mr. Randolph P. Piper & Mrs. Susan I. Stuewer+
Mr. William H. Piper
Dr. & Mrs. Mark Plucer+Δ
Mrs. Fouad Rabiah
Mr. & Mrs. Victor Rabinkov*+Δ
Mr. & Mrs. Michael J. Riha+Δ
Mr. & Mrs. Jeffry D. Rocco
Drs. Michael & Virginia Rucks+Δ
Mr. & Mrs. Paul Runyan*
Dr. & Mrs. Daniel J. Ryan+Δ
Mr. & Mrs. Khalil M. Saab+Δ
Mrs. Betty Salimi+Δ
Mr. & Mrs. Timothy C. Sanford+Δ

Dr. & Mrs. Paul E. Schroeder+Δ
Mr. & Mrs. Howard S. Shand
Chuck & Kathryn Sharbaugh
Mr. & Mrs. John P. Siler+Δ
Mr. & Mrs. James Spangler
Ms. Susan E. Thompson
Mr. Don Tinson II & Ms. Annette Shaffer*+
Dr. & Mrs. Frederick VanDuyne
Mr. & Mrs. Greg Viener+Δ
Miss Beverly Weidendorf
Dr. & Mrs. Jay A. Werschky+Δ
Mr. & Mrs. Ridgway H. White
Mr. & Mrs. Jerome D. Winegarden, Jr.
Mr. & Mrs. Michael L. Wright*
Mr. & Mrs. Dean Yeotis+Δ

Business Members

Business Supporter (\$250 annually)

Artpack Services, Inc.
Boyd Investment Services*+Δ
League of Interesting Women+Δ
Piper Realty Company
RE/MAX EDGE+Δ
Skaff Carpet & Furniture Co.
Woodhaven Senior Community

Business Sustainer (\$100 annually)

3Sixty Interactive
Ace-Saginaw Paving Co.
Mustafa Alnounou, M.D., FACG, FACP
Applebee's Neighborhood Grill & Bar
C & S Motors, Inc.
Christie's - Chicago
Christie's - New York
Clarkston Cultural Arts Council+
Collective Brand + Creative
Communities First, Inc.
Cracker Barrel Old Country Store, Inc.
ELGA Credit Union
FCC Academy
Mr. & Mrs. Eric Gasper
Geriatric & Medical Specialists of MI
Habitat Galleries
Hamilton Community Health Network
The Hamo Group
The Huntington National Bank
Kettering University
McLaren Flint
Midland Center for the Arts
Mott Community College
Mott Community College Workforce Development
Luis A. Perez DDS MS PC
PNC Financial Services Group

PNC Institutional Investments
The Serra Foundation
University of Michigan-Flint - Susan Gano-Phillips
University of Michigan-Flint - Benjamin Gaydos
Vogt's Flowers
Yeo & Yeo, P.C., CPA

Individual Members

Donor

(\$500 annually)

Mr. & Mrs. David F. Barbour+Δ
Mr. & Mrs. Kelly B. Beardslee
Dr. Cathy O. Blight & Mr. Edward B. Davison*+Δ
Mrs. Rosemary R. DeCamp*
Mr. & Mrs. Harry L. Eiferle, Jr.*
Hon. Judith A. Fullerton & Mr. Ward ChapmanΔ
Ingrid G. Halling & Robert Thomas+
David & Donna Hart+Δ
Rev. Reginald V. Lancaster & Dr. Karen R. Wilkinson
Drs. Scott & Lisa Langenburg
Byron & Margie Latter+
Dr. & Mrs. Paul Lauber+
Mr. Robert J. MacDonald*+
Mr. & Mrs. William Peterson
Mr. & Mrs. David Roeser+Δ
Mr. & Mrs. J. Parkhill Smith+
Mr. & Mrs. David E. Wood+Δ

Sponsor

(\$250 annually)

Mr. & Mrs. Robert A. Ackerman+Δ
Dr. & Mrs. William M. Bernard+
Dr. & Mrs. Donald Brockriede+Δ
Mr. & Mrs. Gary Christian+Δ
Mr. David Coleman*Δ
Mr. & Mrs. Chapin Cook
Ms. Jeanne Dodd & Mr. Robert Streadwick
Mr. Thomas Edelen+
Mr. & Mrs. John Fey
Mr. & Mrs. Ed Fizell*+Δ
Ms. Patricia Gage & Mr. William McKay+Δ
Mrs. Roberta L. Goergen*
Mr. Earl E. Gravlin & Ms. Julia Sullivan+Δ
Mr. & Mrs. Christopher Iden*+Δ
Ms. Judith I. Ingram*Δ
Mr. & Mrs. Andrew Isola*+Δ
Mrs. Agape Kallis+Δ
Mr. & Mrs. John H. Lang+Δ
Mr. & Mrs. James LayΔ
Mr. & Mrs. Raymond Lee*+Δ
Mr. & Mrs. William Livengood+Δ
Ms. Maureen MacVay+
Mr. & Mrs. Robert W. Miskow+Δ
Mr. Thomas J. Mitchell+Δ
Dr. Dong Wha Ohm

Mr. Gary Reetz & Mrs. Barb Stone Reetz+Δ
Mr. & Mrs. A. Davison Rice
Ms. Christine Rohr*Δ
Ms. Elisabeth Saab & Mr. Chad Hansen+Δ
Mr. & Mrs. William A. Shaheen, Jr.
Dr. & Mrs. Milton J. Siegel
Dr. & Mrs. Thomas Svitkovich
Ms. Donna L. Ullrich+Δ
Mr. & Mrs. Robert J. VanDuyne+Δ
Ms. Ann Marie VanDuyne*+Δ
Carlene & Rob VanVoorhies+Δ
Mr. & Mrs. Charles F. Wagonlander
Mr. Mark A. Walters+Δ
Dr. & Mrs. Alan Weamer
Dr. David R. Weinberg*

Sustainer

(\$100 annually)

Ms. Velma Adams*
Mr. & Mrs. Robert Aguirre
Ms. Anita Ahearn
Ms. Denise Ahonen
Mr. & Mrs. Michael R. Allen
Mr. Scott Allen & Ms. Karen McKay
Ms. Catherine Anders
Mr. & Mrs. Willis Anderson*
Mr. & Mrs. William R. Angus+Δ
Ms. Peggy Arnold
Ms. Susan K. Askins
Mr. & Mrs. Robert Atkinson+
Mr. & Mrs. Jeffrey Attwood+
Mr. & Mrs. Kenneth D. Baab
Mr. & Mrs. David G. Babieracki*+
Mr. & Mrs. Matt Bach+Δ
Steven & Valerie Bailie
Mr. & Mrs. William Bajcz+Δ
Mr. & Mrs. D. Keith Baldwin*
Mr. & Mrs. Michael Barker
Mr. David J. Barkey*Δ
Dr. & Mrs. Walter Barkey
Mr. Reid Baxter & Mrs. Diane Baxter
Mr. Todd Beard*
Dr. & Mrs. William D. Beck & Kristen
Mr. & Mrs. Donald L. Becker+
Mr. Ray Belcher & Ms. Cindy Cupel+Δ
Mr. William L. Bennetts+
Jane BinghamΔ
Mr. & Mrs. Joe Blakely
Mrs. Evelyn Nida Blanford+
Mr. & Mrs. Michael Blaszkowski
Mr. & Mrs. James Bleicher*
Mr. & Mrs. James Boles
Mr. & Mrs. Donald A. Bomeli+
Mr. & Mrs. Howard Bondy
Ms. Dolores Borrow+
Mrs. Paula S. Bottinelli & Ms. Lia O'Toole+Δ
Mr. & Mrs. Nicholas Bozen
Mrs. Susan Brewster

Ms. Brenda Bridgett
Mr. & Mrs. John C. Briggs+
Mr. & Mrs. Paul Britz
Mrs. Cathy Brown
Mr. Denis Brown & Mr. Brian Shook
Mr. & Mrs. Dennis Brown*+Δ
Ms. Marilyn BrownΔ
Mr. & Mrs. Robert Brown+
Mr. & Ms. Roger H. Brown+
Mr. & Mrs. Randy Bruce
Mr. Clay Buck
Ms. Pat Buerkel & Ms. Tammy Williams+Δ
Ms. Heather Burnash & Mr. Marcus Randolph
Ms. Jennifer Burnett & Mr. Sean Siebigteroth+
Mr. James Burns & Mrs. Gaill McKone-Burns
Mr. & Mrs. Joseph Burroughs+
Mr. & Mrs. Tom E. Butts+
Mr. & Mrs. Adam Carlson+Δ
Mr. & Mrs. Michael Chaffee+Δ
Mrs. Sharon Charlip
Ms. Deborah Cherry+Δ
Lt. Gov. John D. Cherry & State Rep. Pamela Faris+Δ
Robin & Kathleen Childress
Ms. Betty J. Clark+Δ
Ms. Elizabeth A. Clauder+
Mr. & Mrs. James Clodfelter, Jr.
Mr. & Mrs. Corin Cody+
Mr. & Mrs. Bruce T. ColasantiΔ
Mrs. Mary ColemanΔ
Ms. Carol L. Cook
Mr. & Mrs. Thomas Cooper
Samuel & Darylee Coplin
Mr. & Mrs. Paul Corliss
Dr. & Mrs. Marshall Cossman*
Mr. & Mrs. William Coulter*
Mr. & Mrs. Kenneth Cowan
Dr. & Mrs. Clifford J. Cox II
Mr. & Mrs. George Cross
Mr. & Mrs. Daniel Cruz
Mrs. Nancy J. Cunningham
Mrs. Karrie Damm
Dr. & Mrs. Michael Danic
Mr. Robert Darnton & Mrs. Rita Vater-Darnton+
Ms. Dorothy Gae Davis
Mr. James A. Davis & Ms. Carol M. Fabrizio
Loretta Davis & Harold Ford
Ms. Denise DeCubber*+
Mr. & Mrs. Robert DeFrain
Mr. John V. Dempsey & Ms. Margo Lakin+
Ms. Daiva Devereaux*+
Ms. Stephany R. Diana & Mr. Dennis Zawol+Δ
Mrs. Cheri Dickinson+Δ
Ms. Carol Dickinson & Mr. Alvin Miller

Mr. & Mrs. Ray Diem*
Mrs. Margaret E. Diener+
Mr. James & Dr. Carol Dowsett
Mr. Robert F. Dueweke
Mr. & Mrs. Chris J. Dundas+Δ
Mr. Ryan M. Eashoo & Ms. Barbara Eashoo+Δ
Mr. & Mrs. Greg Eason
Mr. & Mrs. Richard H. Ebbott
Mr. Greg Edquist*+Δ
Dr. Brenda Ellens
Mrs. Eileen Ellis
Mrs. Loretta C. Ellwood+
Mr. & Mrs. Bennett Engelman+Δ
David & Jill Esau
Dr. & Mrs. Ali A. Esfahani
Ms. Michelene A. Falk+Δ
Mr. & Mrs. Michael A. Farella+Δ
Mr. Gregory D. Fiedler*+Δ
Mr. Thomas M. Firestone & Ms. Chris Mullally
Mr. Michael Fischer & Ms. Amber Fischer*
Miss Denise D. FishΔ
Mrs. Billie Fisher+Δ
Ms. Nora G. Fisher+Δ
Dr. & Mrs. Melvin Flamenbaum
Mr. & Mrs. Robert Florine*
Ms. Pam Folts & Ms. Sherry Johnston
Ms. Kristin Fontichiaro
Mr. & Mrs. Richard Foor+Δ
Ms. Carole Fults & Ms. Debra Burger
Dr. Gail Ganakas+
Mr. & Mrs. Robert Garrison+
Mrs. Diane Gates
Mr. John R. Gazzal
Ms. Kathleen Gazall*+
Ms. Kathleen George+Δ
Mr. Stephen Gervasi
Mr. Thomas M. Gervasi+Δ
Mr. & Mrs. Michael Gerych
Mr. & Mrs. Elie Ghattas
Mr. & Mrs. Roger Gilmour*
Mr. & Mrs. Christopher Giroux
Mr. & Mrs. Tom Gisewhite+Δ
Debra A. Golden-Steinman & Dr. Harold V. Steinman+Δ
Mr. & Mrs. Lawrence C. Goldman
Mr. & Mrs. Jay Goldstein+
Mr. & Mrs. John Goll
Mr. & Mrs. Mike Gorris
Mrs. Bobbie J. Greer+
Mr. & Mrs. Melvin E. Gregory
Ms. Sheila Grennay & Mr. Dennis Haney*
Mr. & Mrs. Eugene B. Griffel+Δ
Mr. & Mrs. Walter Griffin
Ms. Melinda Grix*
Mr. & Mrs. Thomas Halligan+Δ
Mr. Mark Hamel & Mr. Mike Green
Ms. Lynn A. Hampton*
Mr. & Mrs. David Hanoute

Mr. & Mrs. Carl Hansen+
Mrs. Janice M. HansonΔ
Mr. Donald E. Harbin & Mrs. Elizabeth Perkins-Harbin+Δ
Frankie Hardy
Mr. & Mrs. Joel H. Harris+Δ
Samuel & Graciela Harris
Mr. & Mrs. Ronald J. HartmanΔ
Ms. JoAnne Hatto+
Mr. & Mrs. Dan Heath
Ms. Karolatta Heath & Ms. Ariana Heath+Δ
Mr. John Hemingway & Mrs. Connie Palmer+Δ
Ms. Annetta Hendrickson
Mrs. Ernie Hermann
Ms. Dawn Hibbard & Ms. Hope Wilkins+
Mr. & Mrs. Brent Himes
Dr. & Mrs. John V. Hinterman
Mr. & Mrs. David Hollenbeck*
Ms. Betsy Homsher
Ms. Ethel Hooker+
Ms. Barbara H. Horcha & Mr. William Cross+Δ
Mr. Jeff House & Mr. Jonathan Shettler
Mr. Daniel Howard & Ms. Marcie Howard*
Mr. & Mrs. John Howell
Ms. Dena Howlett
Mr. & Mrs. Francis Hudson+
Mr. & Mrs. Robert Hughes
Mr. & Mrs. Fred Huntzicker
Mr. Robert Hurand & Ms. Katchen Schibilsky
Ms. Kay Iddins+
Dr. Susumu Inoue
Ms. Elizabeth Ireland-Curtis
Ms. Susan A. Ives
Ms. Dianne J. Johnson+
Mr. & Mrs. Earl D. Johnson
Dr. Gary K. Johnson & Ms. Donna Johnson+
Mr. Al Johnston
Mr. & Mrs. George Jones+Δ
Mr. Kyle Kampf
Ms. Elizabeth A. Kaplan & Mr. Rex Donahey
Mr. & Mrs. Jerry Karle*+Δ
Mr. & Mrs. Jay Goldstein+
Mr. & Mrs. G. Donald Kaye+Δ
Mr. & Mrs. Daniel Kelly
Ms. Kitty Kelly+
Ms. Colette Kenville*
Mr. & Mrs. Robert Kilbourn
Mr. & Mrs. Jimmy KingΔ
Ms. Kylie Kingdon
Mr. & Mrs. Melvin Kipp
Mrs. Emily Klein & Mr. Aaron Johnson
Mr. & Mrs. Norman Kleiner
Ms. Kathryn Kohout & Dr. Laurie Kohout+Δ

Mr. & Mrs. Jim Kolhoff+Δ
Mr. Michael Kolleth*
Mrs. Jamie Koonmen
Ms. Donna Kraft
Mrs. Mary E. Kramer & Mr. Ian Young+
James & Barbara Krogsrud+Δ
Mr. & Mrs. Frederick L. Kump
Edward & Donna Kurtz
Ms. Sandra Kusza
Ms. Carol Lacca
Mr. & Mrs. Marshal Lakis
Ms. Carole LaMantia
Mr. Lawrence N. Larson
Mr. & Ms. Stephen Larzelere-Kellermann+Δ
Mr. & Mrs. Gary Latimore
Mrs. Juldeen Lemke
Ms. Susanne J. Les & Mr. Tim GreenΔ
Mr. & Mrs. Carl A. Leser+
Mr. Peter Levine & Ms. Marion Day
Mr. & Mrs. Thomas B. Lillie+Δ
Mr. & Mrs. Kenneth Lindebrekke
Miss Judy Lindstrom
Mr. & Mrs. David Littmann*
Mr. Alvern Lock & Mrs. Theresa Stephens-Lock+Δ
Dr. & Mrs. Edward T. Lock
Dr. & Mrs. John Loeding
Mr. & Mrs. David E. Lossing*
Mr. Donald Lovejoy & Ms. Danyel Bagby+
Tiffany Lovett*
Mrs. Judy Ann Lowrie
Ms. Denise M. Lucas+Δ
Mr. & Mrs. Glenn Lysinger
Ms. Judith E. Mabry
Mr. & Mrs. Laurence E. MacDonald+
Ms. Suzanne MacWilliams+
Ms. Doris Malfese
Ms. Miriam Marcus*
Mrs. Sue Martell*
Ms. Carol Masse+Δ
Mr. Michael Mathieu & Ms. Barbara Swartz
Mr. & Mrs. Lee Maxwell+Δ
Marilyn Mazanec & Mr. Gregory Jensen+
Mr. & Mrs. James McEwan
Dr. & Mrs. Jack McGaugh
Mr. & Mrs. Keith McGrady*
Mr. & Mrs. John J. McIntosh
Mr. & Mrs. Thomas B. McNally
Dr. & Mrs. Kim P. McPheetersΔ
Ms. Jill Medlyn
Mr. & Mrs. Michael Melet+Δ
Mr. David Meyer & Dr. Julie Meyer
Mr. & Mrs. James MiganΔ
Ms. Kareyna Miller+Δ
Mrs. Helen G. Millhouse
Mr. & Mrs. Robert D. Mills
Mr. Thomas Mlynarski & Ms. Kathleen Martz+

Mrs. Doris A. Moellering+
Ms. Kerry Moore
James R. & Helen Sue Morgan
Mr. & Mrs. Don Morris+
Ms. Marlene Morris*Δ
Mr & Mrs. Tom Moylan*
Mr. & Mrs. Michael Munger
Ms. Alice R. Murphy
Mr. & Ms. Peter Murphy+
Mr. & Mrs. Alexander C. Murray+
Mr. & Mrs. Robert W. Myers+Δ
Ms. Anne Naber*
Mr. Walter Nagel+Δ
Mr. & Mrs. George Nassif
Mrs. Jeanette Neu & Mr. Jesse Ballew
Mr. & Mrs. Gary Newbill+
Mr. & Mrs. John Nieman
Mr. & Mrs. Frank Ninteman
Mr. & Mrs. Brian M. Nolan+
Mr. & Mrs. Jon Northrup+Δ
Mrs. Wilaine V. Northway
Mr. & Mrs. Patrick O'SullivanΔ
Dr. & Mrs. James Owen+Δ
Mr. & Mrs. David Owen-Smith
Ms. Mary M. OwensΔ
Ms. Alina Pabin*
Mr. Keith A. Palka
Mr. & Mrs. David L. Panzlau
Ms. Carole A. Pappas+
Dr. & Mrs. Edward Parish+
Mr. Gary Parr
Ms. Roberta S. Patt & Mr. Fred Fechheimer
Ms. Jeanne Pepper & Mr. Thomas Herman+Δ
Ms. Judith Perez*
Ms. Patti Perkins & Mr. Wayne Say
Mr. Douglas Petroni & Ms. Rosalie Buss-Petroni+
Mr. & Mrs. David M. Pettengill*+
Ms. Linnette E. Phillips*+
Mr. & Mrs. Gary Philpott*+Δ
Ms. Helen Philpott
Mrs. Janice G. Pike+
Mr. & Mrs. Mark Piper
Dr. & Mrs. W. Archibald Piper
Mr. & Mrs. Drew Pitts+Δ
Mr. & Mrs. James M. Polehna
Mr. & Mrs. Curtis Pollack+
Mrs. Beverly I. Post & Mr. Richard Hoag+
Mr. Morton Potter+Δ
Mr. & Mrs. James Powell
Mr. & Mrs. Edward H. Powers
Mr. & Mrs. Gerry Prather
Mr. & Mrs. Thomas Princinsky
Mr. & Mrs. Timothy PurmanΔ
Betty & Richard Ramsdell
Judge & Mrs. Robert M. Ransom+
Richard & Ramona Ranville
Mrs. Venkat & Rama Rao
Mr. Ted Rapson
Ms. Paula Ray

Mr. & Mrs. Jim Reigle
Dr. Jacquelyn Reinertson+
Ms. Barbara Rentola & Mr. Robert Berlin+Δ
Mr. & Mrs. Marc Resteiner
Dr. James T. Rhyee & Mrs. Haehyun Rhyee*
Mr. & Mrs. Bruce Richardson
Jane & James Richardson
Mr. & Mrs. James P. Ricker
Mr. & Mrs. Douglas Ricketts
Ms. Theodosia Robertson+
Dr. Brenda Rogers-Grays & Mr. Milton Grays
Mr. & Mrs. Terence Ross*
Mr. & Mrs. Ralph R. Rossell+
Mr. & Mrs. Brian Royce+
Mr. & Mrs. Charles Rudduck*
Mr. & Mrs. David Sabino
Mr. & Mrs. Thomas Salvador+Δ
Dr. Randle Samuels & Ms. Gail Offen+Δ
Mr. Marshall H. Sanders & Dr. Sharon A. Simeon+Δ
Mrs. Amina Sayyid
Mr. & Mrs. Richard Scarlett
Kenneth & Phyllis Schilling+
Ms. Noreen Schlaack
Mr. & Mrs. Derald Schnepf
Mr. & Mrs. Greg Schnesk
Mr. & Mrs. Edwin Schreiber
Mr. & Mrs. Howard S. Schultz+Δ
Ms. Janet A. Schultz+Δ
Mr. & Mrs. Mark A. Schwartz+Δ
Ms. Marsha V. Schwarz+Δ
Mr. & Mrs. Curtis Seibert
Ms. Diann Selleck
Ms. Patti Perkins & Mr. Wayne Say
Mr. Douglas Petroni & Ms. Rosalie Buss-Petroni+
Mrs. Mary Shumsky
Ms. Christa M. Siegel+Δ
Mr. & Mrs. Thomas Skunda
Ms. Linda SmithΔ
Ms. Sandra K. Smith+
Ms. Sheila R. Smith+Δ
Dr. & Mrs. Benjamin M. Sorscher
Mr. Dennis Souter
Ms. Shelley R. Spivack & Mr. Justin Scanlon+
Mr. & Mrs. Fred Standridge+
Mr. & Mrs. Michael Starch
Ms. Sherri Stephens
Miss Barbara Stewart
Mr. Paul Stirling*+
Mr. & Mrs. John Straw+Δ
Mr. Michael Dingman & Mrs. Susan Sumner Dingman+Δ
Mrs. Mary Sutton
Mrs. Bonnie Swanson
Mr. Brent Swanson*
Ms. Roberta Sweetman+
Dr. & Mrs. Johannes Tall
Ms. Ernelle Taylor+Δ

Mr. Gene Taylor
Ms. Christine Thomas+Δ
Ruth & Joseph Thrash
Ms. Karolyn Tiefenbach
Ms. Dionanda Tillman+Δ
Mr. Charles Tobias*
Mr. & Mrs. Robert Turley+Δ
Dr. Colleen Turner & Mr. Roger Turner*
Mr. & Ms. Earl TurnerΔ
Mr. Ted Van Steyn & Dr. Emily Feuerherm
Ms. Judith Vertalka
Mr. & Mrs. William Vredevoogd
Ms. Jane C. Wagner
Mr. & Mrs. William Walker
Mr. & Mrs. Brian Royce+
Mr. Harry Walters
Mr. & Mrs. Clair Ward
Mrs. Janet Warren & Mr. Harold Marks
Mr. & Mrs. Jim Wascha
Ms. Joyce Wefel+
Mr. & Mrs. Richard C. Weiermiller
Mr. Dale K. Weighill & Mr. Sang Truong+Δ
Dr. & Mrs. Stuart B. Weiner+
Ms. Mary E. Whaley & Mr. Rick Kroeger
Dr. Charles V. White+Δ
Ms. Joanne White+Δ
Dr. Elvira M. Wilbur
Ms. Brenda R. Williams*
Dr. & Mrs. James Williams III+
Mrs. Janet Williamson+
Ms. Denise Willing Booher*
Mr. & Mrs. Mike Wilson+Δ
Ms. Ruth Winter & Mr. Tom Thibault+
Dr. Sue Wisenberg+Δ
Mr. & Mrs. William J. Wishart+
Mr. & Mrs. David Withey+Δ
Mr. & Mrs. Jerome J. Wolbert
Mr. & Mrs. Joseph WrightΔ
Ms. Catherine Yeotis+Δ
Judge & Mrs. Thomas C. Yeotis+Δ
Mrs. Lindsey Younger+Δ
Mr. & Mrs. Paul Ytterock
Ms. Jane Zelnis+Δ
Mr. Mike D. Smith & Ms. Trish M. Zito-Smith+Δ
Dr. Kerry Zubke
Mr. Stephen Zulinski+Δ

Family

(\$50 annually)
Mr. & Mrs. Mark Alexander
Mr. & Mrs. Robert E. Alexander
Mr. Fred Allen & Dr. Denise Smith Allen
Mr. Lee Allen & Ms. Jessica Walker
Mr. & Mrs. Edward P. Arends
Mr. & Mrs. Andrew Armstrong*

Mr. & Ms. Willie E. Artis*Δ
Mrs. Patrick & Theresa Atkinson
Mrs. Kathy Baker
Miss Darbie Barkman
Mrs. Jean Battles & Ms. Jessica Wolverton
Mr. & Mrs. Jim Battles
Mr. Todd Beard
Mrs. Patricia Beauvais
Mrs. Angela Benchley
Dr. Morley M. Biesman
Ms. Kim Bistricky
Mrs. Karen Bobier
David & Natalie Bontumasi
Mr. & Mrs. Johnny Bowen
Mr. & Mrs. David S. Boze & Molly
Mrs. Doris E. Brandt
Mr. & Mrs. Kelly J. Brisbin
Miss Kolbie Brow
Mr. & Mrs. Dickson Brown
Ms. Jennifer Burchell
Ms. Connie Burgess & Miss Katie Burgess
Ms. Whitney Byers
Mr. & Mrs. Daniel Cady+
Mrs. Rose Chandanais
Mr. & Mrs. James Cheek
Mrs. Diana Cholakova & Mr. Boyan Dimitrov
Mrs. Krista Church
Mrs. Heather Cichon
Mr. & Mrs. Floyd Clack
Ms. Kimberly Cole+Δ
Mr. & Mrs. Craig Coney*
Ms. Rebecca Cooper
Mr. Joseph Coriaty
Commissioner Kim Courts
Commissioner Martin Cousineau
Ms. Janice Coventry
Miss Angelina L. Cox
Mr. Gale Crooks & Ms. Mary Hart*+Δ
Mr. & Mrs. Joe Curtis
Ms. Theresa Curtis
Dr. Joseph Czaja
Mr. & Mrs. William Daniels
Mr. & Mrs. Robert L. Darley+
Mr. & Mrs. Matt Daunt
Mr. & Mrs. Peter Daunt
Ms. Denise Davidek & Mr. Brian Liljebblad+
Ms. Laurel Davis
Mr. & Mrs. Michael Dawson
Mr. & Mrs. Lou DeCillis*
Ms. Sheila Denny-Fong
Mrs. Elizabeth Dix+
Mr. & Mrs. Patrick Dobson
Dr. Deb Doherty*
Mrs. Kristopher Downs
Dr. Kathleen Dunham & Mr. David Dunham
Mr. & Mrs. Mike Dupont
Mr. & Mrs. Paul Eades
Carol Egloff+Δ

Mr. & Mrs. Harvey Eisman+Δ
Ms. Jenny Elahi
Commissioner Ellen Ellenburg
Dr. Fredrick Ennis & Ms. Patricia Egsburg
Mr. Jim Erwin & Ms. Diane Root
Mr. & Mrs. Joseph A. Eufinger*
Mrs. Candace Ezell
Ms. Mary S. Felix*+Δ
Mr. & Mrs. John Ferguson
Mr. & Mrs. William Flanigan*
Mr. & Mrs. Michael B. Foote
Mr. Richard W. Fortner+Δ
Mr. & Mrs. Les Frazee*
Mr. David Davis & Mrs. Lynn Friesen-Davis
Dr. Eric Friess
Mr. Aron Gerics & Ms. Emily Berck
Ms. Kendra Gilmer
Mr. & Mrs. Kenneth Gitlin+
Ms. Tina Gocha
Mrs. Carolyn Goetz
Mr. & Mrs. Tom Gohsman*+
Ms. Linda C. Golden
Ms. Pamela Goodwin+
Mrs. Susan Graves
Mr. Daniel Greenia & Ms. Nancy Greenia*
Miss Pam Grubaugh
Mr. & Mrs. Thomas Gustafson
Mr. Kevin Guy
Dr. & Mrs. Franklin W. Hamilton*+
Mr. & Mrs. Gary Hansz
Mr. & Mrs. John B. Hartranft+
Mr. Louis A. Hawkins+Δ
Ms. Lauren Heleine
Mrs. Judith Henley+Δ
Commissioner Ted Henry
Mrs. Shirley L. Herman
Ms. Michelle Herrera
Mr. & Mrs. John Hillman*
Mr. & Mrs. Tim Hinkle
Mr. & Mrs. Craig Hinshaw
Dr. & Mrs. Huseyin R. Hiziroglu+Δ
Mrs. Gabrielle Holmes-Scott
Ms. Merry Hosner*
Mr. & Mrs. Robert Houbeck
Mr. & Mrs. Lee Hoyt
Ms. Anette B. Humphrey
Mr. & Mrs. Josh Hurand
Ms. Sara Hurand & Mr. Elie Weiss
Mr. & Mrs. Thom M. Hutchison
Mr. & Mrs. Robert E. Iden
Mr. & Mrs. Steven A. Jadwin*+Δ
Ms. Lynn Jamieson
Ms. Kristine Janke-Stefanko & Miss Dakota StefankoΔ
Mrs. Tracy A. Jennings
Mr. Kristopher Johns & Ms. Vanessa Ferguson
Mrs. Anna Johnson
Ms. Jimmye Johnson
Mr. & Mrs. Thomas Johnson*
Ms. Windy Johnson

Dr. & Mrs. Zelton Johnson
Aaron & Emily Kelley+Δ
Mr. & Mrs. Christopher S. Kelly, Sr.+
Mr. A.P. Kennedy
Mr. & Mrs. Jack Kenney
Mr. & Mrs. Daniel Kenny
Ms. Lisa Kiessling
Mr. Mike Kinnunen
Mr. & Mrs. Russell Kirksey
Ms. Jane Kleynberg & Ms. Lily Cicci
Mrs. Gretchen Knoblock & Mr. Jeff Knoblock
Ms. Melanie Kolacheck & Ms. Susan Beggs
Mr. & Mrs. John Kopec+
Mr. & Mrs. Dave Kunc+Δ
Mr. & Mrs. Shannon Langley*
Mr. & Mrs. Brian Larkin
Mr. Rodrick Larry & Mrs. Sunni Samuels-Larry
Mr. & Mrs. Jay Lasco+
Mr. & Mrs. Mike LeClaire
Mr. Whitney Lemelin & Mrs. Sarah Riegle
Mr. & Mrs. Joe LePard*
Dr. & Mrs. Alexey Levashkevich
Mr. Eric Leverette-Goodwin
Mr. Blake Lieffers
Mr. Eric Lieske
Ms. Cyndi Lieske
Jengde Lin & Tingchi Kuo
Mr. & Mrs. John B. Hartranft+
Mr. Louis A. Hawkins+Δ
Ms. Lauren Heleine
Mrs. Judith Henley+Δ
Commissioner Ted Henry
Mrs. Shirley L. Herman
Ms. Michelle Herrera
Mr. & Mrs. John Hillman*
Mr. & Mrs. Tim Hinkle
Mr. & Mrs. Craig Hinshaw
Dr. & Mrs. Huseyin R. Hiziroglu+Δ
Mrs. Gabrielle Holmes-Scott
Ms. Merry Hosner*
Mr. & Mrs. Robert Houbeck
Mr. & Mrs. Lee Hoyt
Ms. Anette B. Humphrey
Mr. & Mrs. Josh Hurand
Ms. Sara Hurand & Mr. Elie Weiss
Mr. & Mrs. Thom M. Hutchison
Mr. & Mrs. Robert E. Iden
Mr. & Mrs. Steven A. Jadwin*+Δ
Ms. Lynn Jamieson
Ms. Kristine Janke-Stefanko & Miss Dakota StefankoΔ
Mrs. Tracy A. Jennings
Mr. Kristopher Johns & Ms. Vanessa Ferguson
Mrs. Anna Johnson
Ms. Jimmye Johnson
Mr. & Mrs. Thomas Johnson*
Ms. Windy Johnson

Ms. Katie Naves
Ms. Tina Nies
Jonathan Nigrine & Kelly Nigrine
Commissioner Bryant W. Nolan
Mrs. Chelsey Nolan
Dr. & Mrs. Crumsan Nundkumar
Mr. & Mrs. Edward A. Ogul
Mr. Joseph Opalinski
Ms. Lizbeth Orr
Ms. Jacquie Osborn & Mr. Jim Osborn
Dr. Ben Pauli & Ms. Vivian Kao
Mr. & Mrs. Michael Phillips
Mr. Wayne Pickvet & Mr. Bruce A. Barrett
Mrs. Marcie Pigeo
Mr. Nathan Pintacura
Mr. Clayton Pirtle & Mrs. Nevell Pirtle
Ms. Lorna L. Place
Mr. & Mrs. John Pobocik
Ms. Karen Prater*
Mrs. Daphne Prescott
Dr. & Mrs. Paul J. Racine
Mr. Alberto Ramirez & Ms. Vidal Perez*
Mr. Brian Rausch
Mr. Brandon Reynolds
Mr. Paul Robinson
Mrs. Cheryl A. Rogers*
Mr. & Mrs. Alan Rohde
Mr. & Mrs. Barry Rosen
Ms. Susan Ross
Mr. & Mrs. Charles Rudduck
Mr. & Mrs. Allen Salyer+
Ms. Helen B. Sanders
Mr. & Mrs. Casey Schaub
Mrs. Marilyn Secatch & Ms. Hannah DeHaven*
Dr. & Mrs. William Sheppard
Dr. Richard & Rose Marie Shick*
Mr. Andrew Shin
Mrs. Kendra Shrode
Commissioner Shaun Shumaker
Dr. Scott Siefker
Mrs. Katie Simpson
Mr. John J. Mrozik & Ms. Heather Sisto+
Mrs. Lyn Smith
Mr. Scott Smith
Mr. & Mrs. Marc Speiser*
Ms. Lucinda Stevens & Mr. Carl Goldstein
Mr. & Mrs. Norm Stewart
Mr. & Mrs. Mike Strader
Ms. Suzanne Sugden+Δ
Mrs. Ondrea Sumner
Mr. & Mrs. Douglas C. Swanson
Mr. & Mrs. Mark Sword
Dr. & Mrs. Maxwell F. Taylor II+
Mr. & Mrs. F. William Thewalt*
Mr. & Mrs. Daniel Tipton
Mr. James Trammell
Ms. Anh Tran

Mr. & Mrs. Bruce Trevithick+Δ
 Dr. & Mrs. Allen F. Turcke
 Mr. Russ Turner & Ms. Tivoli
 Fountain*
 Ms. Diane Tuttle-Smith
 Mr. & Mrs. James Uicker
 Mr. & Mrs. Umphrey
 Mr. Marcos A. Vargas
 Mr. Chris Vermette & Ms. Joan
 Clarke
 Ms. April Vorhees
 Ms. Robin Wagner
 Mr. & Mrs. Daniel WaldronΔ
 Mr. & Mrs. Donald Walker*+
 Mr. & Mrs. Zach Warby
 Mr. & Mrs. Ray Wascher
 Ms. Susan M. Wedda & Ms. Carol
 J. Ferguson+
 Mrs. Julie Whitebird-Waldorf
 Mrs. Jennifer Wilcox
 Mr. & Mrs. Paul Willette
 Mrs. Diane Williams
 Ms. Sumer Williams
 Ms. Tiffany Williams
 Mr. & Mrs. Zachary Wilson
 Mr. & Mrs. Chris Wise
 Mr. & Mrs. Mark Wooldridge
 Mrs. Kelly Woznek
 Commissioner Mark Young
 Miss Michelle Zhang
 Mr. & Mrs. Paul A. Zimmermann

Dual

(\$40 annually)
 Mr. William V. Abendschien
 & Mrs. Mary Ann Sullivan-
 Abendschein+
 Mr. & Mrs. Monis Ahsan*
 Mr. & Mrs. T.C. Alarie+Δ
 Rex Alexander & Rochelle
 Molyneaux
 Ms. Lee Anderson
 Mr. & Mrs. Rodrigo Andrade
 Mr. & Mrs. Robert Applegate+Δ
 Ms. Jennifer Arnold Champagne
 Dr. & Mrs. Danny Aronovitz
 Dr. Aderemi Artis & Ms. Rachel
 Stock
 Mr. Ronald Artis
 Mr. John Bach & Ms. Mary Alice
 O'Malley+
 Mr. & Mrs. John Baker
 Mr. Richard Barber & Ms. Sharon
 Baker
 Mr. Wayne Barber & Mr. Rich Fitz
 Mr. David Barber & Mr. Paul
 Wizynajtyś+Δ
 Mr. & Mrs. Sam Barnese
 Mr. Al Barron & Ms. Cindy Gunn
 Gary & Maureen Bates+
 Mr. & Mrs. A. David Baumhart IIIΔ
 Mr. John Beach
 Mr. & Mrs. Steve Becker
 Dr. & Mrs. Tom & Linda Belford
 Ms. Vicki L. Bell & Mr. Greg Riley

Mr. & Mrs. Martin Bernstein
 Mr. & Mrs. Richard Blakeley
 Mr. John Blankenship & Ms. Barb
 Brownson
 Mr. & Mrs. Tim Bliese
 Mr. & Mrs. Thom Bohnert+
 Mr. & Mrs. Edward Borkowski
 Mr. Michael Borrer & Ms. Vicki
 Doherty
 Mr. & Mrs. Carl Boylan
 Mr. & Mrs. Edwin Bradley+
 Mr. & Mrs. John A. Brancheau
 Mr. & Mrs. Carl Brandt
 Mr. & Mrs. Barry Braun
 Ms. Eileen Brooker*
 Mr. & Mrs. Willie Bruce+
 Mr. & Mrs. Michael Burkley+
 Mr. & Mrs. Richard J. Caloia
 Ms. Crystal Carman*
 Ms. Cindy Carney & Mr. Gerald
 Kanous
 Mr. & Mrs. Michael Carr
 Mrs. Diana Carr
 Ms. Janice Child & Mr. Mitchal
 Stutes*
 Mr. & Mrs. Jeff Chimovitz
 Mr. James R. Chintyan+Δ
 Mr. & Mrs. Phil Christensen
 Mr. Roy Churchill
 Ms. Sandy Cleomaude & Ms.
 Debra McGee
 Mr. & Mrs. David Coburn+
 Mr. & Mrs. Sylvester Collins+
 Mr. & Mrs. Mark Corrigan+
 Mr. & Mrs. Gary Cox
 Mr. & Mrs. Fred Cross+Δ
 Mr. & Mrs. Robert L. Daly+
 Mrs. Debra M. Danko
 Mr. & Mrs. Skip Davis
 Mr. & Mrs. Stuart Davis
 Mr. & Mrs. Ned DeGalan+Δ
 Ms. Claudia DeMonte & Mr. Ed
 McGowin
 Ms. Audrey E. Dismond & Ms.
 Becky Scott+Δ
 Mr. & Mrs. Bruce Dobras
 Ms. Joan Donovan & Mr. Joey
 Donovan
 Mr. & Mrs. Donald Drake
 Ms. Nancy Hagle-Duffy
 Ms. Patricia S. Duffy & Mr. Ralph
 EdwardsΔ
 Mr. Dennis Dunlavey
 Mr. & Mrs. Paul Easter
 Mr. & Mrs. Jim Edwards
 Mrs. Brenda Eisele
 Murray & Sharon Eisen+Δ
 Ms. Chris Fabian & Mr. Doug
 Bridges
 Mr. & Mrs. Dane Farner
 Mr. Torchio Feaster & Mrs. Rosalyn
 Maben-Feaster
 Mr. & Mrs. Jack Feuerstein+Δ
 Mr. & Mrs. Daniel Fiedor+Δ

Mrs. Tracy Fisher
 Mr. & Mrs. Jim Fleming*
 Mrs. Melissa Ford
 Mr. & Mrs. James P. Ford
 Mr. & Mrs. George Francis
 Ms. Mary Lou Gagnon
 Mr. & Mrs. Howard F. Galloway
 Mr. & Mrs. James Gaver+
 Mr. & Mrs. John Gembinski
 Ms. Melissa Gifford & Ms. Ann
 Williams
 Kerri & Neil Goodman*
 Mr. & Mrs. Michael Grand
 Mr. & Mrs. Robert Guenther
 Ms. Deb Gustafson & Ms. Sue
 Weston+
 Mr. & Mrs. Lawrence Hackett
 Ms. Mary C. Haering
 Mr. Peter Hafner
 Mr. Fred Hall & Ms. Mary Boyer+
 Dr. Barbara Hamilton & Mr. Robert
 McGowan+
 Mr. & Ms. Douglas HanafordΔ
 Mr. & Mrs. Anthony A. Hanak
 Mr. & Mrs. Ken Handwerker
 Mr. James Hansen
 Mr. David Hardaker
 Mr. & Mrs. David Harmon
 Mr. & Mrs. Colin Harrison
 Ms. Charlotte M. Harrison
 Mr. & Mrs. Jacob Hawkins
 Mr. & Mrs. Graham Henderson
 Mr. & Mrs. Edward G. Henneke+
 Mr. & Mrs. John Hice+
 Mr. & Mrs. Claude High & Family
 Mr. & Mrs. John Hillman
 Mrs. Mary Jo Hobart-Parks
 Mr. & Mrs. Gurdon Hobson
 Mr. & Mrs. James HollinsΔ
 Ms. Barbara Holmer & Mr. Robert
 Stanisch
 Mr. & Mrs. Ronald M. Horton+Δ
 Mr. & Mrs. Dennis House
 Ms. Jennifer Howard & Ms. Sheila
 Smith
 Bridget & George HughesΔ
 Mr. Gail Hurst & Ms. Ruth Hurst
 Dr. Richard Ingram & Ms. Susan
 Froelich
 Ms. Danielle Jackson
 Dr. William G. Jacoby & Dr.
 Saundra K. Schneider
 Mr. & Mrs. Daniel Jahn
 Mr. & Mrs. Mitchell Jarosz
 Mr. Kristopher Johns & Ms.
 Vanessa Ferguson*
 Mr. Kenneth Johnson & Mrs.
 Sheila Kelly
 Ms. Julie Anne Jones & Ms. Nancy
 VanHoozier+
 Mr. & Mrs. Paul Jordan
 Drs. Kenneth & Elizabeth Jordan
 Mr. & Mrs. Jay Kalisky
 Mr. & Mrs. William A. Karas II

Mr. & Mrs. Patrick Keavy
 Mr. & Ms. Dennis Kehoe
 Mr. Lloyd Kernen & Ms. Margaret
 Newell+
 Reverend Lynn Kerr & Mr. Jerry
 Kerr+
 Mr. & Mrs. Brian Killian+
 Mr. & Mrs. Dennis KingsleyΔ
 Mrs. Ellen Kissel*
 Mr. & Mrs. Keith Kline+Δ
 Mr. & Mrs. Michael Knag
 Mrs. Camille Koger-McCree & Mr.
 Kyle McCree
 Mr. & Mrs. Rudolph N. Kohn
 Mr. & Mrs. Michael Koviack+
 Mr. & Mrs. Edward Kozlowski
 Mr. Timothy Kranz & Ms. Kelly
 McMillan*+
 Mr. & Mrs. Lawrence F. Kratz
 Ms. Karla Kretzschmer & Ms.
 Kristina Kretzschmer
 Mr. & Mrs. Thomas Kudza
 Mr. & Mrs. Gary Kuiper
 Ms. Lori Lamoreaux & Mr. Craig
 Lamoreaux
 Mr. & Mrs. Mike Laux+
 Mr. & Mrs. Lee LaVictoire+
 Mr. Paul A. Lazar & Ms. Susan P.
 Kirby+
 Mr. & Mrs. Rick Legleitner
 Mr. & Mrs. Kris Libstaff
 Dr. & Mrs. John LoveΔ
 Mr. & Mrs. James A. Loviscek
 Claudia & Richard Mach+
 Ms. Rita Maranowski
 Mr. Richard Mark
 Mr. & Mrs. Brian Martin
 Mr. & Mrs. Charles Martin+
 Mr. Michael McBrearty
 Ms. Ann McConnelee
 Mr. & Mrs. James McDougal
 Mrs. Mary Grace McFarlane
 Mr. & Mrs. Douglas McGinnis
 Mr. & Mrs. Peter McKenna
 Mr. & Mrs. Craig Mengel
 Mr. & Mrs. Kenneth Milioto+
 Mr. James Miner & Ms. Sally
 Pierce
 Mr. Roy Monko*
 Mr. Mark Morra & Ms. Lea Morello
 Mr. & Mrs. Rick Murphy
 Mr. & Mrs. Patrick Myers
 Mr. & Mrs. Jerry Nelson
 Dr. & Mrs. Jack Nettleton+
 Mr. & Ms. Tom Neuhard
 Ms. Alice Nigoghossian & Ms.
 Sandra Nigoghossian
 Mr. & Mrs. Ed O'Mara
 Mr. & Mrs. David Odett
 Mr. & Mrs. Nathaniel Ostrom
 Mr. & Mrs. Joseph Paliani
 Mr. & Mrs. Richard PasiakΔ
 Miss Joanie Pavkovich
 Mr. & Mrs. Kevin Payne+

Mr. & Mrs. James Pendelton
 Mr. & Mrs. David Petrie
 Mr. & Mrs. David Phaneuf
 Mr. & Mrs. Michael Phillips
 Ms. Jacqueline Piechowski
 Mr. Richard Pierce & Ms. Laurie
 Pierce
 Ms. Debra Piper+Δ
 Mr. Matthew Pogue & Mr. Matthew
 VohwinkleΔ
 Mr. John Powell
 Mr. & Mrs. Edward J. Preville
 Mr. Thomas Pugsley & Ms. Susan
 Sage
 Mr. & Mrs. William Pyles+
 Ms. Nancy Radcliffe & Ms. Janice
 Selberg
 Mr. & Mrs. Robert W. Ranta+
 Ms. Ann Rasmussen & Ms. Wilma
 Tremblay
 Mr. & Mrs. Richard Reed
 Ms. Hannah Rhodes
 Mr. & Ms. Robert Rhodes
 Mr. & Mrs. Dale Rice
 Dr. & Mrs. Paul Roetter+
 Mr. & Mrs. Richard Rogers
 Mr. & Mrs. Paul Rozycki+Δ
 Mr. & Mrs. Richard J. RuhalaΔ
 Mrs. Mary-Lou Rynski
 Mr. & Mrs. Roy Sabo
 Mr. William Salo
 Mr. & Mrs. Martin Saltiel
 Mike & Judy SanfordΔ
 Ms. Linda M. Savage & Mr.
 Michael P. Sherry
 Mr. & Mrs. Craig Schaaaf+
 Ms. Sarah Scheitler & Mr. Jacques
 Doucet
 Ms. Roxie Schell & Mr. Damon
 Tempey
 Mrs. Arlene A. Schmitzer
 Mrs. Sharon Scott
 Ms. Kathleen A. Sheehy
 Mr. & Mrs. Jason Shellhaas
 Mr. & Mrs. David J. Simoni
 Mr. & Mrs. Ray N. Sinclair+
 Mr. & Mrs. Donald Skunda
 Mr. & Mrs. Worley Smith+Δ
 Mr. & Mrs. Rohn Smith
 Mrs. Germaine D. Smith
 Mr. & Mrs. Carl Sperber
 Mr. & Mrs. David Sprunk
 Mr. & Mrs. Alan Steffe
 Mrs. Jeanette Stewart
 Mr. & Mrs. Edward Strong+
 Dr. & Mrs. John Sullivan+
 Mr. & Mrs. Jack Sustic
 Mr. Ken Swisher
 Mr. & Mrs. Jon Talarico
 Ms. Kathy Taliaferro & Mr. Edwin
 Gassel
 Mrs. Beth Taylor
 Dr. Gwendolyn Taylor
 Mr. & Mrs. Richard Tesner

Ms. Jeanne C. Thick & Mr. John
 Nelson+Δ
 Mrs. Linda Todorow
 Ms. Mary Toll
 Mr. & Mrs. Paul N. Torre
 Mr. & Mrs. Robert Vale
 Mr. & Mrs. Kenneth Van Houzen+Δ
 Mr. & Mrs. Rob Vogt
 Rev. Tom & Mrs. Beth
 Wachterhauser+
 Mr. & Mrs. James Waner+
 Mr. & Mrs. William White
 Ms. Alaina Wiens
 Mr. & Mrs. Tom Williams*
 Ms. Marilyn Winkens
 Mr. & Mrs. Joseph Wolf
 Ms. Kala Wood & Mr. Nikolai
 Brelinski*
 Mr. & Mrs. Robert Ziegler

Individual

(\$30 annually)

Ms. Dawn Abbott
 Ms. Annette Adams
 Ms. Julie A. Adams+
 Ms. & Mrs. Richard Rogers
 Mrs. Laura Alderman
 Ms. Judith Alexander+
 Mrs. Dolores R. Allen+
 Ms. Margaret Allen
 Ms. Brenda Arsenault
 Mrs. Barbara Asa
 Ms. Frances L. Ascencio+
 Ms. Leesha Asettine
 Ms. Kelly Atherton
 Ms. Christa Azar
 Mrs. Mary Ittison Baehr
 Doucet
 Ms. Roseanne Bagale
 Ms. Ruthann Bajorek
 Dr. & Mrs. Richard P. BaksΔ
 Ms. Lisa Ballard+
 Miss Shirley Bannatyne
 Ms. Sandy Baylis
 Mr. William C. Baylis
 Mrs. Linda Bedtelyon
 Mrs. Doris Beebe
 Ms. Erin Beemer
 Ms. Sheila Bennett
 Mr. Tim Bennett
 Ms. Dawn M. Bentley+Δ
 Mrs. Marta Bentoski
 Ms. Carol Berger
 Mrs. Sandra Berra
 Ms. Eve Berton
 Mrs. Elizabeth A. Bickford+
 Ms. Mary K. Bickley+
 Ms. Jacqui Blackwood
 Ms. Shirley I. Blair
 Mr. Donald Blanchett
 Ms. Valerie Blanchett
 Ms. Mary Bluteau
 Ms. Kimberly A. Bodette
 Ms. Diane Boegner+
 Mrs. Connie Borrie

Mr. Andrew Borromeo
 Ms. Karima A. Bostick
 Dr. Sherrema A. Bower+
 Ms. Lois Boyd
 Ms. Diane Brady
 Miss Jeanette Brayan
 Mr. Brian Bremer
 Mr. Leo J. Brennan+
 Mrs. Linda Bronner
 Ms. Mary Brown+
 Ms. Peggy Brunner+
 Ms. Joy Bublitz+
 Mrs. Maureen G. Buck+Δ
 Wendy A. Bundgaard
 Mrs. Mary Burdis
 Ms. Tamera Burgess+
 Ms. Jennifer Burke
 Ms. Tracie Cady
 Ms. Martha Calhoun+
 Ms. Janet Cameron+
 Ms. Debbie Campbell+
 Ms. Suzan Campbell
 Ms. Barbara Carter
 Dr. Sherry Cavanagh
 Ms. Robin Chan+
 Ms. Teresa Charette
 Ms. Kay E.M. Cherry
 Ms. Janice Child
 Mrs. Patricia A. Chipman
 Ms. Cheryl ChristoffΔ
 Mr. John Coleman
 Mr. Albert Comins
 Ms. Lorraine Conaway
 Ms. Helen Cothrel
 Mrs. Rhonda Coulter
 Rev. Mary B. CovingtonΔ
 Mrs. Shelly Cox
 Ms. Vera L. Crandall
 Ms. Marcy L. Crane+
 Dr. Ronald Crow
 Ms. Chrysa Curran
 Ms. Holly Curtis
 Mr. Edwin D. Custer
 Mr. David Cuthbertson+Δ
 Ms. Susan A. Damone
 Ms. Ziazan Davidian
 Mrs. Judith L. Davidson
 Ms. Marcie Davidson
 Ms. Judy Dawson
 Jaime De La Cruz
 Ms. Stephanie Dean
 Ms. Marian DeCourval
 Ms. Alison Dedrick*Δ
 Ms. Betty L. Dell
 Ercis Uriseaam Migrateaem
 Uiriesausa Den glücksburgske
 slægt
 Miss Vanessa Dendy
 Mr. James Devereaux
 Mrs. Marcia Dicks
 Ms. Susan Diebel
 Mrs. Beverly J. Dillon
 Ms. Shelia Dirrim
 Ms. Kathleen Dockter+

Mrs. Donna Dodds Hamm+Δ
 Mrs. Kimberly Donahue
 Mr. Walter Dotoson
 Ms. Joan E. Dowler+
 Mrs. Jeraldine Doyle+
 Ms. Christine Dugas
 Ms. Shirley Dunbar-Pumphrey+Δ
 Ms. Kathleen Duval
 Ms. Michelle J. Dvorak
 Ms. Karen Eaton
 Mrs. Gloria J. Eby-BuckΔ
 Ms. Marcia L. Elbert
 Ms. Barbara A. Elford
 Mrs. Lynn Elliott+
 Mrs. Rosemary EmertonΔ
 Mr. George Ensinger
 Ms. Ida L. Epstein+
 Ms. Nancy Epstein+Δ
 Ms. Adele Ernberger
 Ms. Cynthia Ernst
 Ms. Kathleen Etherly
 Ms. Rita Fagan
 Mr. William Falkenberg
 Ms. Gisele Farah
 Miss Samantha Farah
 Ms. Diane Farber
 Ms. Kristina Feller
 Ms. Bonnie Ferguson
 Mr. Todd Ferguson
 Mr. Alan J. Ferrari+
 Ms. Cathy Fetters+Δ
 Ms. Andrea Zlatec Floden+Δ
 Mr. Bruce Focht
 Ms. Helen Cothrel
 Dr. Colleen FordΔ
 Ms. Erin Foster
 Mr. Donald F. Fournier
 Ms. Delphine Frank
 Ms. Charlene Franklin
 Mr. Matt Franklin
 Ms. Erin Franzen+
 Ms. Katrina Frary
 Ms. Jane Frasier
 Ms. Amy Freeman+
 Mr. William D. Fuller+Δ
 Ms. Joyce M. GadolaΔ
 Ms. Virginia Gaffney+
 Mrs. Kelly Gagliardo
 Mrs. Myrna Gallinat+
 Ms. Donna M. Gardiner+Δ
 Ms. Christine Gardner+
 Ms. Jill Gardner
 Ms. Mary Gartland
 Ms. Patricia Gerhardt+Δ
 Mrs. Alicia Gemmel
 Ms. Lee Giacalone
 Ms. Densie Giangrande
 Mr. Ivan Gibbs+Δ
 Ms. Anne-Marie Gierens
 Ms. Emily Gieselman
 Ms. Diana Gill
 Mr. John A. Giolitti
 Ms. Grace Glass
 Mrs. Brenda Glasschild

Ms. Mary Gleason
 Ms. Adrienne Goering+
 Ms. Ronda W. Goldfarb
 Ms. Karen Goldstein+Δ
 Ms. Collette Golec
 Ms. Nona Good
 Ms. Andrea Gorko
 Mrs. Debi Goulet+Δ
 Mrs. Marjorie Goza
 Ms. Janet Gray
 Ms. Linda Grimshaw+
 Mr. Quentin Groce
 Msgr. Richard Groshek
 Ms. Mary L. Grossklaus+
 Ms. Carole Gutteridge
 Mr. Joseph Guzzio
 Mr. Alan D. Hackett
 Ms. Anne Hagiwara
 Mr. Thomas M. Haley
 Ms. Julie A. Hall
 Ms. Carolyn Hamilton
 Dr. Charles D. Hanson
 Ms. Janice T. Harden+Δ
 Mr. James Hart+Δ
 Ms. Lois Hartranft+
 Mr. Paul F. Hauth+
 Mrs. Danielle Hawkins
 Mr. Thomas Hayden
 Ms. Shelby Hebel
 Ms. Carole D. Hecker
 Ms. Anne M. Heidel+
 Ms. Ann Heler
 Ms. Ann Helmer
 Mrs. Janis Hendricks
 Ms. Trudy Herriman
 Ms. Shelley Hershberger
 Ms. Harriett Hess
 Ms. Donna Hewitt
 Mrs. Darlene K. Hicks
 Ms. Helen Hierta
 Ms. Carol Higgins*
 Ms. Melissa S. Hill
 Mrs. Lois D. Hodges+
 Ms. Dora Hoelscher
 Ms. Sandy Hofacker+
 Ms. Leni Hoffman
 Mrs. Sandra Holloway
 Ms. Kathi Horton
 Mr. Sidney Horton Jr.
 Mrs. Barbara Hotary
 Mr. Gerald House
 Ms. Judith Hovey
 Mr. Larry D. Howell
 Dr. John A. Howland
 Mr. John Hughes
 Ms. Christine Hull
 Ms. Teresa Hunter
 Mrs. Gail D. Hutchison
 Mr. Robert J. Irwin
 Mr. Steven Izzo+Δ
 Ms. Rachel Jackson
 Miss Esther M. Jacob+Δ
 Miss JoAnn Jacob
 Ms. Mary JacobsΔ

Mrs. Linda Jaworski
 Ms. Sabrina Jensen
 Ms. Samantha Jensen
 Ms. Laurie Jensen-Russell
 Mr. Robert V. Jewell
 Ms. Renee Jobbitt
 Ms. Patricia Johns+
 Mrs. Elaine Johnson
 Mr. Richard G. Johnson+
 Mrs. Mary Alice Jones
 Ms. Linda Jumat
 C.P. Kartha
 Ms. Rachael Kasperowicz
 Ms. Kaye B. Kaufherr
 Ms. Shelly Kaye*
 Ms. Jane Kelly
 Ms. Susan Kelly
 Ms. Brenda Kendall
 Mr. Michael Kennard+
 Mr. Stephen Kober
 Ms. Janette Kolodge
 Ms. Rosemary A. Kowalske
 Miss Sheryl Kreiner
 Mr. Tracy Krumm+
 Mr. David Kummer+
 Mr. James Kummer
 Dr. Nancy Kursik
 Ms. Lisa M. LandΔ
 Ms. Janice Landauer
 Mrs. Michelle Lankton
 Ms. Marjorie J. Larsen+
 Ms. JoEllen Larzelere
 Ms. Marie Lauer
 Ms. Pamela Laureto
 Ms. Kerstin Lawrence
 Ms. Mary Lazar
 Ms. Patricia Lazzio+Δ
 Mrs. Emma Lee Ledingham+Δ
 Mrs. MaryBeth Leet
 Mr. James T. Legacy
 Mrs. Kathryn Lescelius+
 Mrs. Jan LeVasseur+
 Ms. Carol Lewin
 Mrs. Suzanne LewisΔ
 Ms. Camilla Liebold
 Ms. Diane Lien+
 Mrs. Jennifer Lince
 Mr. Tom Lipinski
 Ms. Teresa A. Littlejohn+Δ
 Ms. Sue Lockard
 Mrs. Dana Loewenstein
 Ms. Melody Lumsden
 Ms. Marcia Luther
 Mr. Doug Lynn
 Ms. Giovannina MaioΔ
 Mr. John Mair III
 Ms. Karen Malcolm
 Ms. Sandy Malnar+Δ
 Dr. Pamela Marin
 Ms. Marjorie Markon+
 Ms. Lucille M. Martel+
 Ms. Marcia K. Mathews
 Ms. Ka'Sella Matiere
 Ms. Gina Mattarella

Mr. John T. McAlear
 Ms. Rosellen McAlear+
 Dr. Euretta McAllister+
 Ms. Susan McCormack
 Ms. Diana McCray
 Mr. Tommy McDoniel
 Ms. Barbara A. McGhan
 Ms. Laura McGuire
 Mr. Philip J. McKeachie
 Ms. Sue McKee
 Ms. Kim McKerracher
 Ms. Ruth A. McLearn+Δ
 Mrs. Rachael McMenemy
 Ms. Barbara Menear Nickola
 Mr. Herb Merrell+
 Mrs. Ann Merrill
 Mr. Gary L. Messenger+Δ
 Ms. Wanda Meyer
 Ms. Pennie A. Meyers+
 Mr. Cliff Miller
 Ms. Junko Miller+
 Mrs. Patricia Minshall
 Ms. Barbara Mirsky
 Mrs. Sue Modrak
 Mrs. Mary Ellen Mohn
 Ms. Mona Mohsen-Younis
 Mrs. Elaine I. Moore+Δ
 Ms. Kathleen Moore
 Ms. Dee Moreno
 Ms. Cathy Morrison
 Mr. Jamie Morrison
 Ms. Helen Mostek
 Ms. Sally Mukherjee+
 Ms. Diane Murphy
 Dr. Martha Murray
 Mr. Thomas L. Myers
 Ms. Maryanne Naegle
 Mrs. Glenda Naffziger-Kniss
 Ms. Natalie Napier
 Ms. Michelle Nassar
 Mr. Ulise Nedson
 Ms. Carol F. Negendank
 Ms. Melissa Neuville
 Mrs. Loretta Neville
 Ms. Marna Newman
 Ms. Sandra Nicholas
 Ms. Joyce Nichols+
 Ms. Patsy Noffsinger+Δ
 Mr. Rodney Nowosielski
 Ms. Patricia O'Berry
 Mr. Tim O'Brien
 Ms. Ruth A. O'Connell
 Ms. Janet T. O'Keefe+Δ
 Ms. Mary O'Keefe+
 Ms. Nancy Olds
 Ms. Julie Oparka
 Ms. Michelle Ososki
 Ms. Kim Ott-Gray
 Mrs. Susan Owen Kinsey
 Ms. Corinne C. Pacheco+
 Ms. Jolene Padgett
 Ms. Cherie Palmer
 Mr. Charles Parker
 Ms. Sarah Parker+Δ

Ms. Roberta Parkhill
 Ms. Nancy Parks
 Ms. Alta Parsons
 Mr. Bob Patterson
 Ms. Jo-Ann Pearce
 Mrs. Betty J. Pearson+Δ
 Ms. Diane Pearson
 Ms. Lynn Penning
 Ms. Orlene Peresta
 Mrs. Nancy Peske+
 Ms. Linda Phillips
 Ms. Marissa Pierce
 Ms. Sally Pierson+
 Ms. Jeanne Pina
 Mrs. Karan A. Pinkston
 Ms. Kathy Pobocik
 Mr. David Poirier
 Mr. Michael Post
 Ms. Mary Powell
 Mr. David Prescott
 Ms. Brenda J. Price
 Ms. Frances J. Price
 Mr. Phillip W. PurdyΔ
 Ms. Eleanor Pyles
 Joetta Pyles-Zalewski
 Ms. Kathryn Rafferty
 Ms. Michele Ramo
 Ms. Brenda Raudebaugh
 Ms. Heidi Ray
 Mrs. Saroja ReddyΔ
 Ms. Barbara Reehl
 Ms. Shirley ReeveΔ
 Ms. Lisa Reinert
 Ms. Susan Richards
 Mrs. Sharon Rickard
 Mr. John Ridgeway
 Mrs. Kathy A. Ridley
 Ms. C. Ritchey
 Mrs. Dolores M. Roat-Arnold
 Ms. Edith A. Robbins+
 Ms. Nellann Roberts
 Ms. Deborah Robertson
 Mrs. Karlie Robinson
 Ms. Marilyn Rodzik
 Ms. Kathleen RollinsΔ
 Ms. Sally Ross
 Ms. Suzanne Rosser
 Mrs. Elizabeth Rowse
 Ms. Debra Rubey+Δ
 Rev. Fr. Jarrod Russell+Δ
 Ms. Judith Sale
 Ms. Diane Sanglier
 Mr. Michael Sasinowski
 Ms. Veronica Schaden
 Ms. Reta Schafer
 Miss Jenette Schanick+Δ
 Mrs. Sharon Scharich
 Mrs. Linda Scharrer
 Mrs. Jane Schepler
 Ms. Mary Scheuer+
 Ms. Marta Schonfeld
 Ms. Bobbi Schoofield
 Mr. Richard T. Schroeder+
 Ms. Linda Schwedt

Mrs. Marsha Schweikert
 Ms. Jacqueline Scott+Δ
 Ms. Marian D. Seguin
 Ms. Suzanne M. Sennabaum+
 Ms. Mary Sequin
 Kelly Sharkey
 Mrs. Ruth O. Sharpe+
 Ms. Ellie Sharrow
 Mrs. Hannelore Shattuck
 Ms. Martha Shaver
 Ms. Peggy L. Shaw
 Dr. Janice Shimoda
 Ms. Donna Shinn
 Ms. Verna Shook-Dunn
 Ms. Patrice Shriver
 Ms. Doris Siegmann
 Ms. Margaret Simen
 Ms. Deborah Simms
 Mr. Rinerd Simpson
 Ms. Patricia A. Sincoc
 Ms. Karen Sleno
 Ms. Loretta Small
 Ms. Joan W. SmalleyΔ
 Mr. Dwight Smith
 Dr. Ernestine R. Smith+Δ
 Mrs. Barb Soloko
 Ms. Abrielle Sommers
 Ms. Berna S. Sorscher+Δ
 Ms. Susan Sowa
 Ms. Melody Sowers
 Ms. Susanne Spiegel
 Ms. Marilyn Spiller
 Mrs. Debra Spurgeon+
 Mrs. Emma Lou St. Onge
 Mrs. Kathryn Stack
 Mr. Ryan Stahl
 Ms. Carol Stair
 Mrs. Marel L. Staisil
 Ms. Donna Stanaback
 Mrs. Hannah Stark
 Ms. Patricia Stark
 Ms. M. Zoe Starkweather+Δ
 Ms. Suzanne Stasiak
 Ms. Peggy Staudacher
 Mr. Donald Steibel
 Mrs. Kelly L. Stein
 Mr. Scott Stensaas
 Ms. Audrey E. Stephens+
 Mr. Ralph Stephenson
 Mrs. Sally Salay Stevens+
 Ms. Tonya Stewart
 Ms. Patrice Stiehl+
 Ms. Sheyenne Stowe
 Ms. Sally Strand
 Ms. Carol J. Strong
 Mrs. Ellyn Sudow+
 Susan Sullivan+
 Ms. Virginia Sullivan+
 Mr. Christopher Summers
 Ms. Sarah Szumanski-Jahn
 Ms. Jennifer Taglauer
 Mrs. Brenda Tainsky
 Ms. Munnearah Taliman
 Massoud Tavakoli

Ms. Janet K. Teague
 Ms. Jessica Teeples*
 Mr. Timothy A. Tenbusch
 Ms. Joan Theile
 Mrs. Sally Thielen
 Mr. Mark Q. Thornton+Δ
 Mr. Brody Bellamy
 Miss Elle Sophia Blanton
 Ms. Kiley Brown
 Miss Sheryl Brown
 Miss Elizabeth Carighan
 Ms. Erin Elliott
 Ms. Maria Faris
 Mr. Tyler Hayes
 Miss Emma Jones
 Ms. Judith KalterΔ
 Ameri Kuzemka
 Ryker LaVigne
 Ms. Sarah Mackey
 Miss Casey Miller
 Miss Mackenzie Naffziger
 Karsten Sabo
 Miss Lean Sivak
 Miss Sophia Skellett
 Ms. Jenine Smith
 Miss Julianne Taulbee
 Ms. Olivia Thomas-David*
 Miss Andrea Tinsman
 Miss Taylor Yager
 Miss Sophia Zayac*

Youth

(\$20 annually)

Justin Banks
 Avery Bates-Kirby
 Kimberly Bates-Kirby
 Sarai Benjamin
 Ava Dudley
 Olivia Dudley
 Helena Inga
 Ariel Y. Jenkins
 Lena Jones
 Isla Kirby
 Payton McCoy
 Paxtynn Meek
 Ethan Morley
 Cameron Roeser
 Emerson Roeser
 Parker Roeser
 Joshua Tucker
 Olivia Walsh

Board, Staff & Faculty

Board of Trustees

Elizabeth S. Murphy, *President*
 Thomas B. Lillie, *First Vice-President*
 Mark L. Lippincott, *Second Vice-President*
 Elisabeth Saab, *Secretary*
 Martha Sanford, *Treasurer*
 Thomas J. Mitchell, *Immediate Past President*
 Eleanor E. Brownell
 Ann K. Chan
 James D. Draper, *Founders Society President*
 Mona Hardas
 Carol Hurand
 Lynne Hurand
 Raymond J. Kelly III, *FIA Representative to FCCC Board*
 Alan Klein
 Jamile Trueba Lawand
 Eureka McCormick
 William H. Moeller
 Jay N. Nelson
 Karl A. Olmsted
 Dr. Brenda Rogers-Grays
 Michael Rucks
 Ira A. Rutherford
 Mary Coe Ryan
 Sharon A. Simeon
 Patricia Spangler
 Theresa A. Stephens-Lock
 David Stickel, *FCCC Board Representative to FIA Board*
 Tiffany Stolzenfeld
 Lynne A. Taft-Draper, *Friends of Modern Art President*
 Gregory G. Viener
 Jan Werschky
 Shannon Easter White
 Dean Yeotis

Staff & Art School Faculty

John Henry, *Executive Director*
 Guy J. Adamec, *Art School Instructor/Technician*
 Gerald Alcorn, *Security*
 Kerry Allen, *Café Assistant*
 James Ames, *Art School Instructor*
 Rebecca A. Andrus, *Art School Instructor*
 Jarreen Ankton, *Security*
 Valarie F. Bailie, *Membership Coordinator*
 David Booth, *Security*
 Edwin Bradley, *Curator of Film*
 Jessica Brown, *Art Educator*
 Kaitlin Brown, *Café Assistant*
 Tammi Browning, *Art Educator*
 Heidi Buckley, *Art Educator*
 Kenny Burress, *Visitor Services Manager*
 Nicholas Carlton, *Security*
 Thomas Cheek, *IT Manager*
 Bryan T. Christie, *Facilities Manager*
 Megan Church, *Education Programs Coordinator*
 Yazmin Dababneh, *Art School Instructor*
 Monique M. Desormeau, *Curator of Education*

Alla B. Dubrovich, *Art School Instructor*
 Michelle Dummer, *Assistant Curator of Education*
 Jennifer Edgington, *Art Educator*
 Pamela Ehde, *Early Childhood Art Educator*
 Donovan Entrekin, *Director of the Art School*
 Benjamin Ewing, *Art School Instructor*
 William Farmer, *Security*
 Craig Fenner, *Audio/Visual Technician*
 Bonnie Ferguson, *Membership Assistant*
 Spencer Ferro, *Art School Instructor*
 Alice Foster-Stocum, *Art School Instructor*
 Esther Garrison, *Assistant Head of Security*
 Anthony Gittens, *Assistant Security Supervisor*
 Tracee Glab, *Curator of Collections & Exhibitions*
 James Gould, *Art School Instructor*
 Rebecca Gray, *Art School Instructor*
 Jeffrey Hageman, *Art School Instructor*
 Kara Harris, *Café Assistant*
 Paul Hauth, *Art School Instructor*
 Tonya Henderson, *Art School Instructor*
 Julia Hill, *Security*
 Nelson Hinshaw, *Art School Instructor*
 Barbara Holmer, *Art School Instructor*
 Rachael Holstege, *Curatorial Assistant*
 Donald O. Howell, *Assistant Facilities Manager & Preparator*
 Richard Huron, *Facilities Assistant*
 Heather Jackson, *Collections Manager*
 Anna Johnson, *Art School Instructor*
 Erin Jones, *Café Assistant*
 Kimberly Justice, *Assistant Retail Manager*
 Yolonda Kish, *Visitor Services*
 Andrea Knight, *Security*
 Matthew Knuth, *Café Manager*
 Sarah Kohn, *Associate Curator*
 Karyn R. Konkel, *Art School Instructor/Technician*
 Charlene Kopplitz, *Communications & Marketing Coordinator*
 Andrew Koupal, *Art School Instructor*
 Christopher Kramer, *Art School Instructor*
 Andrew Kups, *Art School Instructor*
 Miles Lam, *Graphic Designer*
 Emily Legleitner, *Visitor Services*
 James Louis, *Security*
 Igor Macherkevich, *Art School Instructor*
 Elizabeth Mamola, *Retail Assistant*
 Donald McCombs, *Security*
 Madysyn McKown, *Café Assistant*
 Jeffrey McLaurin, *Facilities Assistant*
 Michael A. Melenbrink, *Director of Finance and Administration*
 Michael Mentz, *Glass Programs Assistant & Art School Instructor*
 Lori Motley, *Executive Assistant*
 Sarah Mullane, *Director of Member & Guest Relations*
 Corinne Nuzum, *Art Educator*
 Emily O'Boyle, *Education Media Coordinator*
 Sarah O'Dea, *Visitor Services*
 Matthew Osmon, *Art School Instructor*
 Peter H. Ott, *Registrar*
 Robert Pattison, *Café Assistant*
 Ryan Pfeifer, *Art School Instructor*
 Grace Phillips, *Art School Assistant/Hot Shop*
 Marissa Pierce, *Public & Community Relations Coordinator*
 Cory Potter, *Retail Manager*

Marwan Prince, *Visitor Services*
 Kyle Prince, *Security*
 Amara Roberts, *Security*
 Mark Robichaud, *Facilities Assistant*
 Natalie Robinson, *Security*
 Philip Ruehle, *Art School Instructor*
 Ryan Sanders, *Security*
 Richard Severn, *Facilities Assistant*
 Elizabeth Sevick, *Visitor Services*
 Kathryn K. Sharbaugh, *Director of Development*
 Courtney Simpson, *Art School Instructor*
 Erika Simpson, *Visitor Services*
 Arla Slogor, *Art School Instructor*
 Anita Spencer, *Art School Instructor*
 Kyle Spencer, *Facilities Assistant*
 Hannah Stark, *Art School Administrative Assistant*
 Emily Stetson, *Assistant Events Coordinator*
 Tracey S. Stewart, *Development Officer*
 Savannah Stone, *Café Assistant*
 Sheyenne Stowe, *Art School Technician*
 Ellyn Sudow, *Art School Instructor*
 Karen Sutherland, *Art School Instructor*
 Brent Swanson, *Glass Programs Manager*
 Caleb Szukhent, *Facilities Assistant*
 Richard Tesner, *Art School Instructor*
 Kimberly Thomas, *Art School Instructor*
 Sifus Thompson, *Art School Instructor*
 Precious Thompson, *Visitor Services*
 Yolanda Toins, *Early Childhood Art Educator*
 Ashley Toth, *Special Events Coordinator*
 Billy G. Traylor, *Security*
 Clarence Turner, *Security*
 Haley Vela, *Café Assistant*
 Kathleen A. Weiss, *Security*
 David Wesley, *Security*
 Timothy Widener, *Art School Instructor*
 Jordan Williams, *Visitor Services*
 Michael Wilson, *Security Supervisor*
 Kala Wood, *Membership Assistant*
 Heather Wright, *Digital Media Specialist*

