

The background is a complex, abstract watercolor composition. It features a rich palette of colors including deep reds, bright yellows, magentas, and dark blues. The colors are blended and layered, creating a sense of depth and movement. Organic, cell-like shapes and patterns are scattered throughout, reminiscent of biological structures or microscopic views. The overall effect is vibrant and artistic.

FLINT INSTITUTE OF ARTS
annual report 2012–2013

ABOUT THE FLINT INSTITUTE OF ARTS

Incorporated in 1928, the FIA is a privately supported, non-profit organization. It is one of Michigan's most significant cultural and educational resources, serving people of all ages and interests.

The Institute is supported entirely through memberships, contributions from individuals and businesses, earned income from endowments and grants from trusts, government, and foundations.

The Institute's collections and temporary exhibitions are open daily (except national holidays). Donations are appreciated. Art classes for adults and children, lectures, films, tours and other special events are also offered as an integral part of the Institute's educational mission.

The Flint Institute of Arts is an Equal Opportunity Employer and provides programs and services without regard to race, color, religion, national origin, age, sex or handicap.

The Flint Institute of Arts is tax-exempt under Section 501 (c) (3).

MISSION

To advance the understanding and appreciation of art for all through collections, exhibitions, and educational programs.

Operating support for the Flint Institute of Arts is provided in part by the Charles Stewart Mott Foundation.



FIA exhibitions and programs are made possible in part with the support of the Michigan Council for Arts and Cultural Affairs, a partner agency of the National Endowment for the Arts.



CONTENTS

president's report	3–4
director's report	5–6
exhibitions	7–8
videos	9
loans	10–12
acquisitions	13–14
films	15–16
art school	17
education	18
income sources	19–20
special events & facility rental	21–22
support	23–24
contributions	25–28
membership	29–37
financial statement	39–42
board, staff & faculty	43–44

cover image

Irene Neal

American, b. 1936

Leaping (detail), 2012

mixed media on paper

22 x 28 inches

Gift of Irene Neal, 2012.9

PRESIDENT'S REPORT



Samuel M. Harris
President

I would like to begin by extending my sincerest thanks to the members of the board for their kind support and for allowing me the privilege and opportunity of serving a second year as board president. It has truly been a humbling and extremely gratifying experience. The opportunity to work closely with the incredibly talented and dedicated staff has been the highlight of my years on the board. My appreciation and admiration for John Henry and this staff has grown with each interaction, and I am convinced that collectively this group of professionals is among the very best assembled anywhere in the field.

I also want to express my appreciation to the members of the board for their commitment of time, talent and resources this past year, for their energetic and sometimes impassioned Board meeting discussions, and for their faithful attendance at exhibitions, events, and films. Their willingness to give generously of themselves and their readiness to raise challenging issues for board discussion is strong evidence of their deep commitment and dedication to the FIA.

Combing the Board's skills, talents and unique perspectives with those of the staff can produce some astounding results. Active participation on committees is the Board's best opportunity for meaningful

interaction with the department heads and key staff responsible for implementing the board defined vision and strategies. The numerous board actions taken this year that arose out of committee work will impact the FIA for years into the future.

We updated the equal employment opportunity language in the personnel policy manual and in the Bylaws to be consistent with current EEOC standards.

We reviewed the numerous contributions made by the Advisory Council during our major renovation period and subsequent visioning process, and determined that the Advisory Council had fulfilled its formal purpose and would subsequently be convened on an as-needed basis.

We approved an exceptional schedule of exhibitions that ensures an interesting and diverse offering of exhibitions ranging in focus and audience appeal from the installation of Michael Dunbar's large-scale bronze sculptures to the exhibition *Drawing Together: International Cartoons*.

We approved 39 additions to the Permanent Collection through gifts and acquisitions including a Michael Dunbar sculpture, a priceless collection of ancient Chinese jades, and a Winfred Rembert painting, to name just a few.

We accepted a donor's generous bequest to the

ceramics department, and following cross committee collaborations, recommended an expanded vision for the Art School renovation that better positions the kiln room, glaze lab, and welding lab for future program development.

We agreed to form a fiduciary relationship between the FIA and the Society for Paragone Studies in association with University of Michigan-Flint, which will bring this scholarly group to our facility on a biennial basis.

We reviewed endowment performance, revised investment strategies and reallocated distribution of funds based on fund manager performance and adherence to fund guidelines.

It's obvious from this brief overview that the members of the board and the FIA staff are fully committed to maximizing the use of our resources and to taking those actions necessary to strengthen and grow the organization and to ensure that our mission is achieved.

The mission of the FIA is further advanced by the efforts of the countless volunteers and auxiliary groups who selflessly dedicate themselves for the betterment of the FIA. Most notable among them are the Founders Society, the Friends of Modern Art and the docents. Among their numerous contributions this past year, the Founders sponsored the *FIA Magazine*, provided support for Art of Collecting, funded books for the library and conducted a series of events including *A Lush Life* jazz concert, Ulgen Recital and First Frost art show. During this same period, the Friends of Modern Art provided significant support for the Winfred Rembert Exhibition and Community Gala and once again conducted the Flint Art Fair and the FOMA Film Series. FOMA has also announced a substantial multi-year commitment to fund the upgrade of our video equipment to a digital projection system. On behalf of the board, I want to thank Founders and FOMA for their continued financial support and for their unswerving focus on pursuing what is in the best interests of the FIA. I also want to similarly recognize the special contribution of our docents who tirelessly dedicate themselves to enriching the experience of countless visitors to the FIA by making the collection and exhibitions come alive through interpretive narratives and interactions

with our visitors. Their impact toward advancing our vision is immeasurable.

Finally, I want to extend our profound thanks and debt of gratitude to each of our donors, large and small, institutional and private, who generously support the FIA through contributions to our endowment funds, support of exhibitions, sponsorship of programs, and enrichment of our collections through gifts of art. Chief among these benefactors is the Charles Stewart Mott Foundation, for whom we have reserved our deepest debt of gratitude. Year after year, the Mott Foundation has strengthened and sustained us through their continued financial support and their unwavering commitment to our mission. We realize that we literally could not fulfill our broader mission and future vision without their strong support.

As we look to the future, our greatest challenge and opportunity as a board will be to develop sustainable sources of income. The recent economic resurgence has been positively reflected in our endowment funds, and over time will produce much needed additional revenue. This good news is offset by the sobering realization that under even the best conditions our current level of endowment is not sufficient to sustain the FIA without jeopardizing the mission and broad vision that we embrace. As a board, there is nothing we can do that would better demonstrate our abiding gratitude to the Charles Stewart Mott Foundation, our numerous donors, auxiliaries and volunteers, and all who have come before us, than to place the FIA on this path to financial sustainability.



Samuel M. Harris
President

DIRECTOR'S REPORT



John B. Henry
Director

The 2013 fiscal year beginning July 2013 had remarkable performances from staff and volunteers in meeting—and often exceeding—the many goals we set for ourselves. As always, we have measured the impact of our endeavors and I would like to begin by reporting on our progress.

Noteworthy achievements include ranking first nationally in per capita educational encounters among 180 of the country's largest art museums, offering 212 art classes with an enrollment of 1,500, providing educational programs that served 46,047 people, and attendance of 130,436. This year, the FIA presented 25 exhibitions and installed 616 works, 38 artworks were added to our permanent collection, and 228 works—rarely or never before on view—were installed throughout the permanent collection galleries. Membership reached 2,330 this year not counting an additional 1,855 College Town members.

It has been said many times, the key to our sustainability is to develop and expand an engaged and informed cultural community for the future. During the last decade, the FIA's influence has grown dramatically to include a larger regional audience. To this end, improving our reach through digital and social media

has been one of our highest objectives. This year, our website had nearly 161,000 unique visitors and our Facebook page currently has 7,080 fans. Our fans have 1.7 million friends and each month our Facebook records nearly 33,000 daily engaged users viewing and sharing our content.

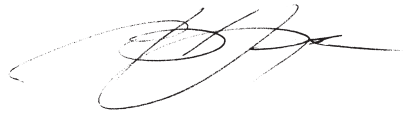
In 2013, the FIA continued its long history of initiating, organizing, and participating in community-wide collaborations. Collaborators and collaborations this year include the Karen Schneider Jewish Film Festival of Flint, the Genesee County Fair, the Flint Public Library on Martin Luther King Jr. Day, Holiday Walk, Flint Community Schools, Kearsley Community Schools, and Catholic Charities. We collaborated with the Flint Cultural Center on issues of campus-wide security, long range planning, and program scheduling. Healing through Art Therapy is a program of the Art School in collaboration with McLaren Hospital. Now in its sixth year, College Town provides free memberships to college students and faculty from five area colleges. The FIA's partnership with the Food Bank produced 1,300 bowls in our studios for the annual Empty Bowls event during "National Hunger Awareness" month. New this year was the Flint Arts On the Road

partnership with Flint Institute of Music, Flint Youth Theatre and Tapology where students exhibited and performed at the Department of Education in Washington D.C., and—we just completed our partnership as a fiduciary for a \$250,000 grant from a nationwide collaborative of large foundations and granting agencies called ArtPlace in support of the Flint Public Art Project.

I would like to thank everyone for the support we received from so many community donors including the Friends of Modern Art, Founders Society, Citizens Bank (now FirstMerit), C.S. Harding Foundation, Miner Trust, Community Foundation of Greater Flint, A.G. Bishop Trust, Welch Foundation, Whiting Foundation, Sheppy Dog Fund, and Merkley & Loeb Charitable Trusts. New contributors include the Sud and Fárrehi Family Foundations lending their support to the Pre-College Portfolio Development Program, the Nartel Family Foundation who focused on two senior programs, and Merrill Lynch with their sponsorship of the Film Program, Flint Sail & Power Squadron and the Horowitz Foundation who sponsored exhibitions, PNC Bank who sponsored early childhood education programs, and The Foundation of the American Institute for Conservation for providing glazing material and funding support to conserve several important works on paper in the FIA's collection. Additionally, substantial grants were received from Target, Isabel Foundation, Michigan Council for Arts and Cultural Affairs, and especially the Charles Stewart Mott Foundation. Notable contributors this year include Mr. and Mrs. Jay Nelson, Mr. and Mrs. William White, Mrs. Nancy Kleinpell, Ms. Lynn Hurand, Mrs. Doris Sutton, Mrs. Eleanor Brownell, Community Podiatry, Dr. Jamile Lewand, Runyan Pottery Supply, and Ms. Grayce Scholt who personally supported the Annual Appeal, scholarships, collections, exhibitions, and renovations and equipment for the expanded Art School. As important as ongoing support is to the museum, the cultivation of new donors is also essential to FIA programs and services and to the growth of the collection and publications. Our four annual events, Art On Tap, the Community Gala, Wine Tasting and The Party, collectively had 182 sponsors and 1,690

attendees. In addition, 61 organization, businesses and individuals rented the facility entertaining 5,447 guests.

Our fiscal year end is not just a time to look back but also a time to look forward to the 12 months ahead and the exciting plans we have made to open the Art School's new welding facility, kiln room and glaze lab; present special exhibitions, art classes, family programs, school visits, films, and lectures, and organize art fairs, parties, Happy Hour evenings, and all the other things that make the FIA an exciting and vital organization in the community.



John B. Henry
Director

EXHIBITIONS

Temporary exhibitions at the Flint Institute of Arts promote greater audience visitation and are one of the most visible programming activities. From cartoons to paintings and from tooled-leather to model ships, this year the FIA presented a large range of exhibitions that explored a variety of facets of the artistic realm, appealing to and allowing us to reach a broader audience than ever before. In total, this year visitors had the opportunity to see almost 600 works of art, many of which were drawn from the FIA's permanent collection, including decorative arts, paintings, works on paper, and sculpture, all from various cultures and time periods. With the FIA being the only institution of its kind in Flint, Genesee County, and the region north of the Detroit metropolitan area, it is vital that exhibitions explore a wide range of artistic concepts from around the world.

In the fall, over 100 cartoons from the around the world presented three decades of global history in the exhibition *Drawing Together: International Cartoons*. The cartoons in this exhibition not only offered insight into world history, philosophy, and cultural similarities and differences, but also demonstrated how artful freedom of expression can be. Coupled with this exhibition, the FIA in conjunction with the Charles Stewart Mott Foundation published a catalogue featuring 130 award-winning entries to the annual International Cartoon Competition, organized by the Aydin Doğan Foundation.

This thought-provoking exhibition was followed in the winter by the first museum retrospective of the self-taught African American artist Winfred Rembert, featuring more



Drawing Together: International Cartoons catalogue

From the exhibition *Drawing Together: International Cartoons*

Dalcio Machado

Brazil, b. 1972

Untitled, 2007

16.9375 x 12.1875 inches

Courtesy of the Aydin Doğan Foundation



than 40 works of hand-tooled leather. Rembert depicted moments from his life on tooled and painted leather, conjuring a world of incredible brutality and close personal ties. This exhibition emphasized the dramatic and overtly biographical nature of Rembert's work, combining artistic inspiration with documentation of some of the most tumultuous moments of Civil Rights-era history.

This year all the spring exhibitions had the theme of water in American art, with *Reflections on Water in American Painting: The Phelan Collection*, *Ship Shape: Models of Great Lakes Vessels*, and *Great Lakes Painting: The Inlander Collection*. *Reflections on Water* documented evolving artistic trends through paintings of water: from sailboat portraiture to waterscapes to industrial waterfronts. Following the theme of water, *Ship Shape* offered visitors the opportunity to learn about the art of model ship making. Models in this exhibition were built to commemorate some of the most revolutionary vessels ever to sail the Great Lakes. Defined geographically, the artists in *Great Lakes Painting* were active in the states surrounding the Great Lakes during the first half of the 20th century. Together the paintings formed a compelling visual record of a distinctive regional culture sustaining and celebrating itself through an era of great cultural growth and change.

In addition, several exhibitions during the fiscal year also featured contemporary art, such as *Michael Dunbar: Explorations in Space* on the FIA grounds and in the Hurand Sculpture Courtyard, and *David Maxim: Figure Portraits* in the Graphics Gallery.

In this fiscal year, Hodge Galleries attendance totaled 20,832.

Michael Dunbar: Explorations in Space

10.4.12 – 5.31.14

Abstract Expressionism: Then & Now

5.5.12 – 8.19.12

Sponsored by Friends of Modern Art

The Golden Age of Painting: 1600–1800, from the Speed Art Museum

5.5.12 – 8.19.12

Sponsored by Citizens Bank and Whiting Foundation

Organized by the Speed Art Museum, Louisville, KY. It is supported by an indemnity from the Federal Council on the Arts and Humanities.

The Epic & the Intimate: French Drawings from the John D. Reilly Collection at the Snite Museum of Art

5.5.12 – 7.29.12

Organized by the Snite Museum of Art at the University of Notre Dame.

Viola E. Bray: A Legacy of Giving

5.5.12 – 8.19.12

Designs from the Past: Ancient Chinese Ceramic Vessels

6.30.12 – 9.16.12

Drawing Together: International Cartoons

9.15.12 – 12.30.12

Sponsored by Charles Stewart Mott Foundation

Exhibition video sponsored by Michigan Radio

Organized by Aydin Dogan Foundation

Around the World with 80 Objects

10.6.12 – 8.11.13

Michael Dunbar: Explorations in Space, Small-scale Sculptures

11.11.12 – 12.16.12

Worth a Thousand Words: American Political Cartoons From the Michael Kelly Collection

11.3.12 – 1.6.13

African American Works on Paper

1.12.13 – 3.10.13

Winfred Rembert: Amazing Grace

1.27.13 – 3.17.13

Sponsored by Community Foundation of Greater Flint and Friends of Modern Art

Organized by the Hudson River Museum

David Maxim Figure Portraits

3.16.13 – 6.2.13

Reflections on Water in American Painting: The Phelan Collection

4.6.13 – 6.16.13

Sponsored by Citizens Bank and Founders Society

Presented by Exhibits Development Group, USA

Ship Shape: Models of Great Lakes Vessels

4.6.13 – 6.16.13

Sponsored by Flint Sail and Power Squadron

Great Lakes Painting: The Inlander Collection

4.6.13 – 6.16.13

VIDEOS

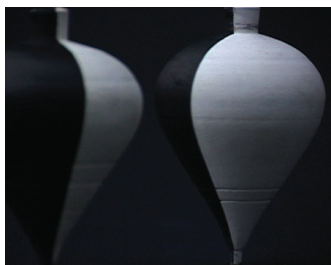
Dedicated to showcasing contemporary video art, the Fleckenstein Video Gallery features a new work each month. The gallery is ideally suited for single-channel videos that are played in a continuous loop, and projected onto a 10 x 12 foot screen. This fiscal year equipment was upgraded to include a region-free blu-ray player, allowing the FIA to display works in the highest quality available and opening up the opportunity to exhibit video art from around the world.



**Walt Disney's
"Taxi Driver"**
*Courtesy of
the Artist*



**Quarta-Feira de
Cinzas/Epilogue**
*Collection Miami
Art Museum,
museum
purchase with
funds from the
MAM Collectors
Council © Rivane
Neuenschwander*



Love
*Courtesy of
the Artist*

Atlanta

7.1.12 – 7.31.12
by Miranda July

Battleship Potemkin Dance Edit

8.1.12 – 8.31.12
by Michael Bell-Smith

Deeparture

9.1.12 – 9.30.12
by Mircea Cantor

Losing Ground

10.1.12 – 10.31.12
by Patty Chang

Birdcalls

11.1.12 – 11.30.12
by Malcolm Sutherland

Walt Disney's "Taxi Driver"

12.1.12 – 12.31.12
by Bryan Boyce

Automatic Writing

1.1.13 – 1.31.13
by William Kentridge

Century

2.1.13 – 2.28.13
by Kevin Jerome Everson

Quarta-Feira de Cinzas/Ash Wednesday/ Epilogue

3.1.13 – 3.31.13
by Rivane Neuenschwander with Cao Guimaraes

Time After Time

4.1.13 – 4.30.13
by Anri Sala

Love

5.1.13 – 5.31.13
by Miguel Angel Rios

Twice Removed

6.1.13 – 6.30.13
by Leslie Thornton

LOANS

The Flint Institute of Arts believes an effective way to enhance its reputation as an important cultural institution is to lend works of art from its permanent collection to other museums. Lending art promotes collegial relationships between museums, and provides national and international audiences exposure to works of art from the FIA's outstanding permanent collection. In addition, the FIA also borrows works from other museums, galleries, and collectors to supplement its permanent collection and exhibitions.

Loans to the Permanent Collection

The following artworks were on loan to the FIA's permanent collection:

Dow Gallery

3.26.12 – 3.26.16

Man Ray
American, 1890–1976
Sec, 1916
oil on board
25.25 x 19 inches
Courtesy of Francis Naumann Fine Art, L2013.2

Leon Kelly
American, 1901–1982
Nude Figure, 1924
charcoal and pastel on paper
26 x 20 inches
Courtesy of Francis Naumann Fine Art, L2013.3

Johnson Gallery

6.25.13 – 6.25.14

William R. Wheeler
American, 1832–1894
Great Lakes Marine Disaster, ca. 1860 ▼
oil on canvas
27.5 x 47.5 inches
Collection of Arthur J. Phelan, L2013.5

Charles M. McIlhenney
American, 1858–1904
Steamboat at Night, Mississippi River, ca. 1885
oil on canvas
24 x 20 inches
Collection of Arthur J. Phelan, L2013.6

Contemporary Galleries

9.1.13 – 8.31.14

Friedel Dzubas
American, b. Germany, 1915–1994
Morgan's Rouge, 1977
oil on canvas
40 x 40 inches
Collection of the Eli and Edythe Broad Art Museum, Michigan State University; MSU purchase, 64.11, L2012.1

FIA Grounds

10.4.12 – 12.19.13

Markus Schaller
German, b. 1967
Managed Cube, 2005
steel
80 x 79 x 68 inches
Courtesy of the Artist, L2012.9

10.4.12 – Current

Rolf Nolden
German, b. 1954
Space in Time I, 2004
steel
110 x 225 x 185 inches
Courtesy of the Artist, L2012.8



Loans from the Permanent Collection

The following artworks were on loan from the FIA's permanent collection to the following exhibitions:

Cassatt & Beyond: Paintings from the Flint Institute of Arts

6.24.12 – 9.23.12

The Snite Museum of Art
University of Notre Dame, Indiana

Alfred Stevens

Belgian, 1823–1906
Terrace at Honfleur, ca. 1888
oil on canvas
31.9375 x 25.25 inches
Gift of The Whiting Foundation
and Mr. and Mrs. Donald E.
Johnson Sr., 1966.30

Mary Cassatt

American, 1844–1926
Lydia at a Tapestry Frame, ca.
1881 ▶
oil on canvas
25.625 x 36.375 inches
Gift of The Whiting Foundation,
1967.32

Édouard Vuillard

French, 1868–1940
*Femme allumant un poêle dans
un atelier (Woman Lighting a
Stove in a Studio)*, 1924
oil on paper mounted on canvas
25 x 29.25 inches
Gift of The Whiting Foundation
through Mr. and Mrs. Donald E.
Johnson, 1971.12

Childe Hassam

American, 1859–1935
Newport Waterfront, 1901
oil on canvas
26.25 x 24.125 inches
Gift of The Whiting Foundation
through Mr. and Mrs. Donald E.
Johnson, 1972.31

Pierre Bonnard

French, 1867–1947
La Lampe, ca. 1899
oil on academy board mounted
on panel
22.25 x 27.5 inches
Gift of The Whiting Foundation
and Mr. and Mrs. Donald E.
Johnson, 1977.25

Pierre Auguste Renoir

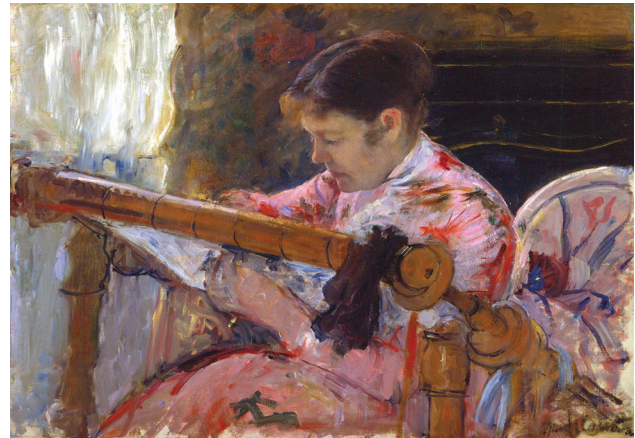
French, 1841–1919
Coco, 1904
oil on canvas
13.25 x 13.25 inches
Gift of Mrs. Charles Stewart Mott,
1980.50

Eugène-Louis Boudin

French, 1824–1898
*Trouville, l'avant port (Trouville,
Forward Port)*, ca. 1892–96
oil on panel
15.0625 x 18.25 inches
Gift of The Whiting Foundation,
1985.39

Frederick Carl Frieseke

American, 1874–1939
Two Women on the Grass,
ca. 1914 or earlier
oil on board
18 x 23.375 inches
Gift of David M. and Patrick
Martin in memory of Virginia
Davison Martin, by exchange,
gift of Mr. Max Greenfield, by
exchange, gift of Mr. and Mrs.
Donald E. Johnson, by exchange,
gift of Gertrude and Leonard
Kasle, by exchange, gift of Mrs.
Bernhard Stroh, by exchange,
and gift of Dr. Julius Stone, by
exchange, 2002.1



Dual Visions: John Rogers Cox, Artist & Curator

10.5.12 – 12.29.12

Swope Art Museum
Terre Haute, Indiana

John Rogers Cox

American, 1915–1990
Nocturne – Silver and Grey, 1952
oil and tempera on Masonite
Gift of Pat Glascock and
Michael D. Hall in memory of
all American Regional artists,
Inlander Collection, 2003.22

Complex Conversations: Willie Cole Sculptures & Wall Works

1.10.13 – 2.15.13

James W. and Lois I. Richmond Center for
Visual Arts Western Michigan University
Kalamazoo, Michigan

Willie Cole

American, b. 1955
Magna tji wara, 2006
bicycle parts
48.25 x 23 x 9 inches
Museum purchase, 2007.5

Maurice Merlin & the American Scene, 1930–1947

1.19.13 – 4.15.13

The Huntington Library, Art Collections,
and Botanical Gardens
San Marino, California

William Gropper

American, 1897–1977

Refugees, 1937

lithograph on paper
8.875 x 12.75 inches
Gift of Jack B. Pierson in memory
of Mr. Robert Martin Purcell,
1979.140

Basil Hawkins

American, 1903–1982

Shop Workers, n.d.

linocut on paper
3.5 x 4.5625 inches
Gift of Madeline Anthony,
2000.130

Basil Hawkins

American, 1903–1982

Strike, n.d.

pen and wash on paper
10 x 6.25 inches
Gift of Jack B. Pierson in memory
of Robert Martin Purcell,
1979.269

Hughie Lee-Smith: Meditations

2.14.13 – 5.19.13

Muskegon Museum of Art
Muskegon, Michigan

Hughie Lee-Smith

American, 1915–1999

Transition, 1964

oil on canvas
18 x 32 inches
Gift of Mr. and Mrs. Jerome
O. Eddy, by exchange, gift of
Mrs. Arthur Jerome Eddy, by
exchange, and partial gift of
Michael Rosenfeld Gallery, New
York, 2002.12

Hughie Lee-Smith

American, 1915–1999

Beach Scene, 1953

oil on Masonite
23 x 35 inches
Courtesy of the Isabel
Foundation, Inlander Collection,
L2003.79

Hughie Lee-Smith

American, 1915–1999

Slum Lad, ca. 1960

oil on canvas
26 x 32 inches
Courtesy of the Isabel
Foundation, Inlander Collection,
L2003.80

Philip Pearlstein's People, Places, Things

3.3.13 – 6.16.13

Museum of Fine Arts
St. Petersburg, Florida

Philip Pearlstein

American, b. 1924

Entrance to Lincoln Tunnel,

Daytime, 1992

oil on canvas
72 x 72 inches
Gift of Mrs. Cecil Boksenbom, by
exchange, 1993.40

Pioneering Modernism: Post-Impressionism in Cleveland, 1908–1913

5.24.13 – 7.27.13

Cleveland Artists Foundation
Lakewood, Ohio

William Sommer

American, 1867–1949

The Rabbit Hutch, 1913

oil on board
26 x 20 inches
Courtesy of the Isabel
Foundation, Inlander Collection,
L2003.112

ACQUISITIONS

The Flint Institute of Arts' permanent collection is a resource for creating exhibitions and developing educational programs for a diverse public including scholars and students.

The growth of the collection is supported by gifts from civic-minded individuals who donate funds and works of art to the permanent collection. In addition, the Curatorial Department and the Collections Committee work together to identify strategies and seek new funds for the acquisition of artworks that meet museum objectives and the expectations of an ever inquisitive and knowledgeable public. The staff conducts work essential to the care and management of the collection, including research, documentation, preservation, presentation and interpretation.

Norm Stewart

American, b. 1947
Mirage, 1982
screen print on paper
26 x 20 inches
Gift of Arlene Walt in memory of Alan Walt, 2012.1

Karsten Creightney

American, b. 1976
Starburst Mum, 2011
cyanotype and transfer drawing,
collaged and monotype on paper
29.5 x 39.5 inches
Gift of the artist and Joe Zanatta,
2012.2

Walter Midener

American, b. Germany, 1912–1998
Untitled (seated woman), 1952
wood
18 x 4.5 x 8.75 inches
Gift in honor of Dr. E. Bryce Alpern and Harriet Alpern by their children, 2012.3

William Fanning

American, 1887–1986
Untitled (Female tightrope walker), n.d.
colored pencil on paper
21 x 15.875 inches
Gift in honor of Dr. E. Bryce Alpern and Harriet Alpern by their children, 2012.4

George Timock

American, b. 1945
Untitled, 1975
raku ceramic
12 x 80 x 3 inches
Gift of Roy and Joan Bence, 2012.5

Kathe Kollwitz

German, 1867–1945
Untitled, n.d.
etching on paper
23 x 20 inches
Gift of Roy and Joan Bence, 2012.6

Michael Gallagher

American, b. 1945
Tooraloo, 1979
acrylic on canvas
72 x 60 inches
Gift of Elaine Litvack, 2012.7

Artist Unknown

African
Alligator Mask, n.d.
wood and fabric
40.5 x 32.5 x 13.125 inches
Gift of Thomas and Marsha French, 2012.8

Irene Neal

American, b. 1936
Leaping, 2012
mixed media on paper
22 x 28 inches
Gift of Irene Neal, 2012.9

Irene Neal

American, b. 1936
Love Potion, 2011
mixed media on paper
22 x 28 inches
Gift of Irene Neal, 2012.10

Robert Indiana

American, b. 1928
LOVE paperweight, n.d.
aluminum
3 x 3 x 1.4375 inches
Gift of Norman E. Bullock,
2012.11

Katherine Korach

Canadian, b. 1950
Birdbirth, 1986
mixed media on paper
9.625 x 13 inches
Gift of Max Lepler and Rex L. Dotson, 2012.12

Katherine Korach

Canadian, b. 1950
Girl in Pink Bonnet, 2003
mixed media on paper
14.75 x 12.5 inches
Gift of Max Lepler and Rex L. Dotson, 2012.13

Milo Reice

American, b. 1952
Funerary Lament for Raffaello Sanzio, 1980
gouache on paper board
28 x 40 inches
Gift of Carlo and Kathryn Lamagna, 2012.14

Italo Scanga

American, b. Italy, 1932–2001
Eppe, 1975
mixed media on paper
15.875 x 19.875 inches
Gift of Carlo and Kathryn Lamagna, 2012.15

Jerry Wilkerson

American, 1943–2007
Untitled (Puppy), 1975
watercolor on paper
15 x 15 inches
Gift of Carlo and Kathryn Lamagna, 2012.16

William T. Wiley

American, b. 1937
Eerie Grotto? Okini, 1982
woodcut on paper
22 x 30 inches
Gift of Carlo and Kathryn Lamagna, 2012.17

Bruce Helander

American, b. 1947
Juggling Juicy Fruits, 1987
paper collage
13 x 9.5 inches
Gift of Carlo and Kathryn Lamagna, 2012.18

John Buck

American, b. 1946
Beirut, 1984
color woodcut on paper
62.5 x 36 inches
Gift of Carlo and Kathryn Lamagna, 2012.19

Marvin Lipofsky

American, b. 1938
Sketch, 1975
blown glass
7 x 9.25 x 9 inches
Gift of Mary Corkran, 2012.20

Sydney Cash

American, b. 1941
Free Standing Sculpture, 1982
slumped glass
10 x 6.75 x 6.75 inches
Gift of Mary Corkran, 2012.21

Jaromir Rybák

Czechoslovakian, b. 1952
Eye of Darkness, 1994
cast glass
13.5 x 20 x 5 inches
Gift of Mary Corkran, 2012.22

Dale Chihuly

American, b. 1941
Macchia, 1986
blown glass
20 x 23 x 20 inches
Gift of Zelma and Gilbert Zelma
Gottlieb, 2012.23

Roni Gross

American
The Night Hunter, 2011
mixed media
12 x 9.25 x 2.5 inches
Gift of Roni Gross in memory of
Arthur Hurand, 2012.24

Sidney Hurwitz

American, b. 1932
Gas Works, 2012
aquatint on paper
18 x 13.875 inches
Commissioned for the 2012 FIA
Print Society, 2012.25

Sempad Bedrossian

Lebanese
Oud, ca. 1926
wood, ivory, mother of pearl,
nylon
30.5 x 14.25 x 9 inches
Gift of Margaret Rabiah, 2012.26

Nick Bubash

American, b. 1949
Magician, 1998
lithograph on paper
24.75 x 18.5 inches
Museum purchase, 2012.27

Roger Shimomura

American, b. 1939
Mix and Match I, 2001
lithograph on paper
20.5 x 28.5 inches
Museum purchase, 2012.28

Robert Brawley

American, 1937–2006
The White Blouse, 1991
lithograph on paper
34 x 25 inches
Museum purchase, 2012.29

George Wesley Bellows

American, 1882–1925
The Drunk (Second Stone),
1923–1924
lithograph on basingwerk
parchment paper
22.625 x 17.625 inches
Museum purchase, 2012.30

Niccolò Vicentino

Italian, ca. 1503 – ca. 1540/50
Christ Healing the Lepers,
printed 1608
chiaroscuro woodcut on paper
11.75 x 16.375 inches
Museum purchase with funds
from the Jill Ford Murray
Irrevocable Trust in memory of
her parents, Carlotta Espy Ford
and George Ross Ford, Jr., and her
grandparents, Grace Miller Ford
and George Ross Ford, 2012.31

Scott McMillin

American, b. 1965
Pearly Whites, 2011
salvaged auto body parts and
acrylic on panel
72 x 44 x 3 inches
Museum purchase, 2012.32

Michael Dunbar

American, b. 1947
Cassiopeia, 2008
bronze
60 x 72 x 108 inches
Gift of James and Kenneth Kilian,
2012.33

Roy Lerner

American, b. 1954
Vista Red, 1984
acrylic gel on canvas
52 x 111 inches
Gift of Lewis Cabot, 2012.34

Winfred Rembert

American, b. 1945
*Picking Cotton, Rows to the
Left #2*, 2010
dye on carved and tooled leather
33 x 31 inches
Museum purchase with funds
donated by Mr. William S. White,
2013.1

Laetitia Hohenberg

American, b. 1962
Bye Bye Blue, 2011
acrylic and charcoal on canvas
85 x 108 inches
Museum purchase, 2013.2

David Eichenberg

American, b. 1972
Aimee, 2011
oil on panel
7 x 6.25 inches
Museum purchase, 2013.3

Yoruba Tribe

African
Yoruba Beaded Coronet,
orikogbofo, 20th century
natural fiber, cloth, beads
9 x 9.75 x 5.25 inches
Museum purchase, 2013.4

Sempad Bedrossian

Lebanese
Oud, ca. 1926
wood, ivory, mother of pearl,
nylon
31.5 x 13.75 x 9 inches
Gift of Margaret Rabiah, 2013.5

David Maxim

American, b. 1945
Justin, 2006
pencil on paper
14 x 11 inches
Gift of the artist, 2013.6

David Maxim

American, b. 1945
Linda Poses, 2007
pencil, colored pencil on paper
14 x 11 inches
Gift of the artist, 2013.7

David Maxim

American, b. 1945
Self-portrait, 2011
pencil, charcoal washes on paper
10.75 x 13.75 inches
Gift of the artist, 2013.8

Ian Hornak

American, 1944–2002
Rising and Setting Sun, 1973
oil on canvas
40 x 58 inches
Gift of Eric Ian Hornak Spoutz,
Natasha Spoutz, and Rosemary
Hornak in honor of Olga Gavorski
(b. 1953 – d. 2013), 2013.9

Hilo Chen

American, b. Taiwan, b. 1942
Tulip, 1987
watercolor on paper
9 x 6.5 inches
Gift of Eric Ian Hornak Spoutz,
Natasha Spoutz, and Rosemary
Hornak in honor of Olga Gavorski
(b. 1953 – d. 2013), 2013.10

Lowell B. Nesbitt

American, 1933–1993
Violet Iris, 1981
oil on canvas
38 x 44 inches
Gift of Eric Ian Hornak Spoutz,
Natasha Spoutz, and Rosemary
Hornak in honor of Olga Gavorski
(b. 1953 – d. 2013), 2013.11

Lowell B. Nesbitt

American, 1933–1993
Untitled, 1979
screenprint on paper
8 x 10 inches
Gift of Eric Ian Hornak Spoutz,
Natasha Spoutz, and Rosemary
Hornak in honor of Olga Gavorski
(b. 1953 – d. 2013), 2013.12

Thomas Hart Benton

American, 1889–1975
Lonesome Road, 1938
lithograph on paper
11.75 x 16.25 inches
Gift of Judith A. Ebbott, 2013.13

Robert Burger

American, b. 1938
Oluk, 2012
ceramic
13 x 11 x 12 inches
Gift of the artist, 2013.14

Thornton Dial

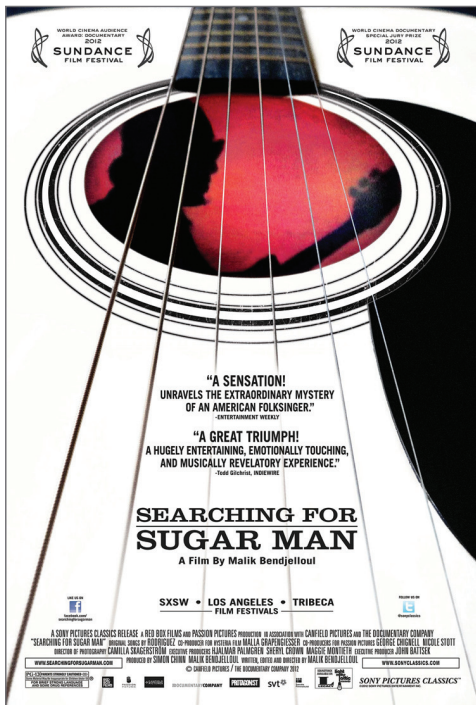
American, b. 1928
Rolling Mill, 1994
mixed media on canvas on wood
65 x 65 x 12 inches
Museum purchase with funds
from the Collection Endowment,
funds donated by Mr. William S.
White and partial funds donated
by Mr. Durfee Day, 2013.15

FILMS

The FIA Film Program is intended to offer motion pictures that appeal to a broad and diverse audience in the local community. The program is comprised of a weekly schedule of film series and festivals in the FIA Theater. The main series, sponsored by the Friends of Modern Art and held on Fridays, Saturdays and Sundays, accounted for 39 titles over 38 weeks from September until June in 2012–2013. The College Town Movie Series was held on 19 Thursday nights between September and April.

A total of 9,787 patrons—the third-highest yearly total ever—attended films at FIA in 2012–2013. In addition, the FIA Film Society continued for its fourth year to encourage members to take a stronger interest in the program.

Among the films shown at FIA in 2012–2013 were *Amour*, the Academy Award winner for Best Foreign Language Film; *Searching for Sugar Man*, which won the Oscar for Best Documentary; and the Woody Allen comedy *To Rome With Love*, which was the season's most popular attraction in terms of attendance.



Film Program

In fiscal year 2012–2013, the FIA Theater screened these films in the Friends of Modern Art series:

September

To Rome With Love
Marley
Chico and Rita
Headhunters

October

Searching for Sugar Man
Beasts of the Southern Wild
Wallander: The Revenge
Where Do We Go Now?

November

Hysteria
The Intouchables
The Queen of Versailles
Safety Not Guaranteed
Ruby Sparks

December

Robot and Frank
Celeste & Jesse Forever
Chicken With Plums

January

Arbitrage
The Bay
Sleepwalk With Me
Spike & Mike's Sick & Twisted Festival of Animation
All Me: The Life & Times of Winfred Rembert

February

Compliance
The Flat
Trishna
Detropia

March

A Royal Affair
The Sessions
The Master
Rust and Bone
The Central Park Five

April

Amour
Academy Award Nominated Shorts
The Gatekeepers
No

May

Beyond the Hills
Gimme the Loot
Lore
Happy People
Bless Me, Ultima

Sponsored by

Friends of Modern Art
 Guardian Alarm
 Merrill Lynch
 Michigan Public Radio

Film Festivals

October 27–28

Arabic Film Series

In partnership with Flint's Arab American Heritage Council, the Arabic-themed films *The Time That Remains* and *Tahrir 2011* were shown at the museum. 50 people attended.

May 5–9

Karen Schneider Jewish Film Festival of Flint

In the ninth annual local festival—a spinoff of the Detroit-based Lenore Marwil Jewish Film Festival—five feature-length films were shown in a co-sponsorship with the Flint Jewish Federation. The features screened were *Hava Nagila: The Movie*; *The Other Son*; *Follow Me: The Yoni Netanyahu Story*; *A Bottle in the Gaza Sea*; and *AKA Doc Pomus*. During a special “teaser” preview event April 11, the feature *Jews in Baseball: An American Love Story* was shown. 523 people attended in all.

Film Society

The 2012–13 season marked the fourth year of the FIA Film Society, a group intended to increase interest in, and funding for, the film program.

By season's end, the society included 83 members and sponsors. Most of them were at the basic membership level of \$100, which granted the donor 36 tickets to FOMA films, listings in the FIA Members Magazine and Annual Report, and access to monthly e-mailed newsletters about upcoming movies.

Higher sponsorship levels gained donors listings on screen before each film presentation, extra tickets and a presence on the FIA website.

College Town Film Program

In fiscal year 2012–2013, the FIA Theater screened these films in the College Town movie series (with free admission for patrons with college ID or FIA College Town membership):

September

Rushmore
Tiny Furniture

October

Persepolis
What's Funny?
Undeclared
Cyrus

November

Election
Pariah
The Bourne Legacy

December

The Battleship Potemkin

January

Spike & Mike's Sick & Twisted Animation Festival
Seven Psychopaths

February

Skyfall
Celeste & Jesse Forever
Damsels in Distress
Wreck-It-Ralph

March

The Hobbit
The Perks of Being a Wallflower
The Central Park Five

April

Searching for Sugar Man

Sponsored by

Baker College
Kettering University
Mott Community College
University of Michigan-Flint
Friends of Modern Art

ART SCHOOL

The FIA Art School is dedicated to the enrichment of the community through individual academic exposure to the visual arts. Highly qualified faculty offer instruction in drawing, painting, photography, digital arts, animation, cartoon and character design, fibers, glass mosaic, ceramics, sculpture, and early childhood art courses. Since 1928, the Art School has operated continuously, helping students develop a wide range of artistic goals and skill levels. Programs are designed to support the mission of the FIA with dynamic curricula that engages students and the community through creative processes, studio experiences, and gallery exhibitions.

Programming

The Art School continued to increase guest artists and workshops, such as Matting & Framing by Katherine Livengood, Oval Lidded Vessel by Kay Yourist, and Ultra-Thin Slab Vessels with Frank James Fisher. The FIA collaborative *Healing Through Art Therapy* program with McLaren Flint generated 148 encounters during the 2012–2013 fiscal year with art therapist Gail Singer. The Art School collaborated with the Food Bank of Eastern Michigan to produce 1,300 bowls for the Food Bank’s annual Empty Bowls Project. The *Pre-College Portfolio Development Program*, in its fifth year, had an opportunity to showcase their artwork in Washington, D.C. The exhibition, *Flint Arts on the Road*, exhibited 26 works of art in the U.S. Department of Education’s Lyndon B. Johnson building in Washington DC from April 15 – May 31. In addition, the Art School organized a cooperative endeavor between the Flint Institute of Arts, Flint Institute of Music’s School of Performing Arts, Flint Youth Theatre, and Tapology. The project brought together gifted students from each institution, combined creative energies, and developed a program for an exhibition of visual art and live performances at the United States Department of Education. Students, directors, and chaperones, totaling 35 individuals, traveled to Washington, D.C. in late April. Young artists exhibited and performed for members of the United States Congress, invited dignitaries, and guests. The program touted the importance of arts education and exceptional opportunities available to young art majors in Flint, Michigan. The exhibition and performances were publicized via the following websites and publications: *U.S. Department of Education*, *MLive*, *Association of Art Museum Directors*, and *My City Magazine*.

Student Amenities

Studio 7 (black & white photography lab) underwent a minor renovation and has been refitted as a professional photography studio. Faculty offered workshops and instructed art students on the basics of documenting two and three-dimensional works of art, as well as, portraiture. The Bishop Gallery continued record numbers in opening reception attendance and averaged 80–90 guests per event. In the second year of a three-year grant, the Bishop Gallery converted all track lighting from traditional incandescent bulbs to new energy efficient LED lights. Studio 3 (ceramics) has undergone a renovation similar to the enhancements in Studio 2 the previous year. Cabinets and countertops were installed to run the majority of the length of the south wall, creating additional working surface and storage. The Flint Institute of Arts received the Michigan Council for Arts and Cultural Affairs (MCACA) capital improvement program grant to expand Art School studio spaces. This led to the development of architectural drawings detailing a renovation and 1,500 sq. ft. addition to expand current welding program, house a new 53 cu. ft. gas cart kiln, glaze lab, and foundry. Construction began during the summer 2013 session and was completed before the fall session began in September.

Enrollment

Summer 2012, 375 students
Fall 2012, 451 students
Winter/Spring 2013, 542 students

Scholarships

The Art School granted \$18,390 in scholarships for the fiscal year 2012–2013 to 146 students (91 youth scholarships and 55 adult scholarships). There was a 15% increase in funds granted/requested in comparison to fiscal year 2011–2012 of \$15,740.

Marketing

The Art School continued marketing in the form of E-News releases for Bishop Gallery exhibitions, television ads prior to the beginning of each session, various notices in the Flint Journal and on MLive, and L.E.D. billboards along Flint-area highways.

EDUCATION

The Flint Institute of Arts is committed to promoting understanding and enjoyment of the visual arts through high quality art education programs. We believe art is a vital component of life and that learning is a lifelong process. Our educational programming provides dynamic and enriching experiences for people of all ages and with all levels of familiarity with art.

Our programs invite people to gain greater understanding and enjoyment of the FIA's outstanding permanent collection and special exhibitions. They are designed to present learning opportunities that are rich in content and stimulate imagination, thought and creativity.

Education programs served a total of 50,963 during the fiscal year.



Public Programs

Consistent marketing through social media, mail and email marketing kept attendance strong. Public programs served 18,637 people during fiscal year 2012–2013, a gain of 4% over fiscal year 2011–2012.

K-12 Programs

Gallery and studio programs comprised 42% of educational programming and served 32,326 K-12 and homeschool students. Twenty-two percent participated in gallery lessons, 20% in studio activities, 57% in outreach programs, and 1% in self-guided visits/other. Seventy-five percent of students attended public schools, 17% private/charter schools, and 8% homeschool schools, with 96.5% of the schools located in Genesee County. The remaining 3.5% of schools served were from Oakland (1.85%), Livingston (0.6%), Macomb (0.3%), Ingham (0.3%), Lapeer (0.2%), St. Clair (0.15%), Midland (0.05%), and Saginaw (0.05%).

Docent Program

Docents are integral to the Education department. Twenty-eight volunteers were involved in the docent program in fiscal year 2012–2013. They participated in intensive training sessions from September through May. Docents assisted with 546 gallery and studio programs, serving 8,189 people, and resulting in 1,873 hours of service.

Active Docents

Oya Agabigum
Lavonne Bomeli
Tom Butts
Janet Cameron
Kathy George
Kim Giacchina
Amanda Kimberly
Martha Latimore
Alfreda Harris
Diana Heitman
Lee Hockstad
Lynne Hurand
Jeanette Nassif
Pat Pavlis
Linda Petee
Vanessa Robar
Cheryl Rogers
Gail Shulman
Kathy Weiner

Docents in Training

Joanne Anderson
Lorraine Austin
Sandy Berra
Jamie Galant
Liz Harbin
Karolatta Heath
Belle McPhee
Walt Russ
Andrew Smith

Interns

Thirty-five students enrolled in the Art Education classes at Mott Community College received gallery training and assisted with gallery and studio lessons for K-12 and homeschool groups during the Fall and Winter semesters, resulting in 2,100 hours of service.

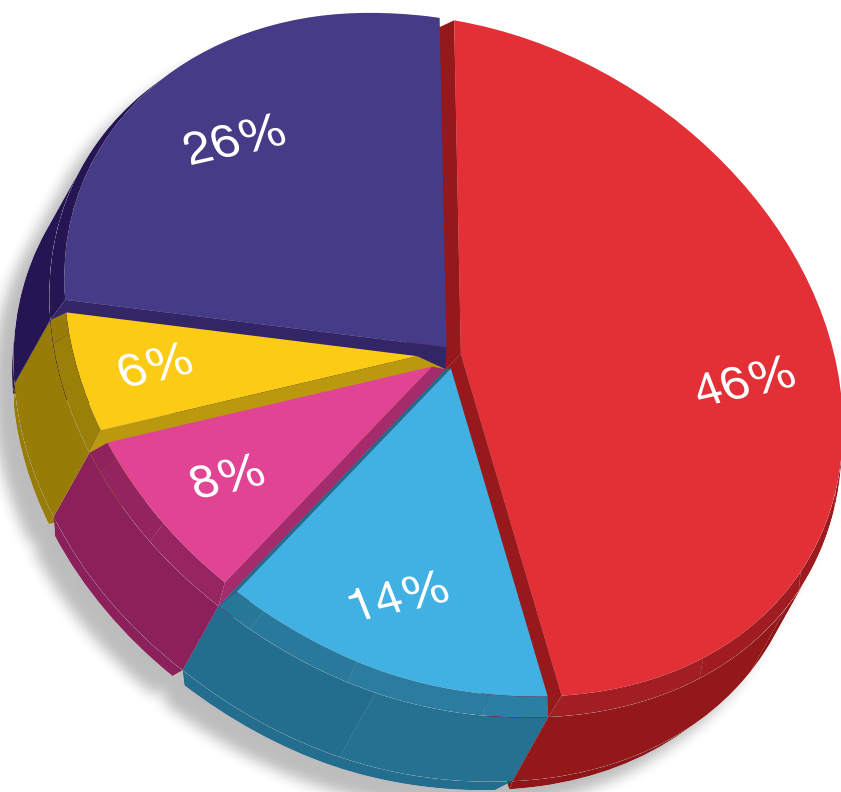
DEVELOPMENT

The Development Department is responsible for all areas of funding for the FIA. This includes support through an annual appeal, grants, membership, planned giving, sponsorships, and the Endowment Campaign.

In addition, the Department manages audience development, collaborative initiatives, facilities use, marketing, special events, social media and the website. The Department also organizes a broad and diverse volunteer base.

Income

The FIA has five primary sources of support: endowment income, grants, earned income, contributions, and membership.



- Endowment Income
- Grants
- Earned Income
- Contributions
- Membership

Endowment Income

The endowment funds of the FIA produce an annual yield, both restricted and unrestricted. These funds support general operating, exhibitions, programs, art acquisition, art conservation, scholarships, lectures and membership initiatives. As of June 30, 2013 the endowment funds totaled \$26,753,387 contributing 26% to the annual income. Unrestricted donations in the form of planned gifts and bequests are traditionally allocated to endowment. Please see page 26 for this fiscal year's listing.

Grants

The FIA receives grant awards from foundations, community organizations, businesses, corporations and the state and federal governments. Revenue from grants represents 46% of the FIA's annual income. The FIA receives support from two auxiliary groups, the Founders Society and Friends of Modern Art.

Earned Income

Income generated from sales, tuition, facility rentals, special events, and admissions provided 14% of the FIA's operating income.

Contributions

Monetary donations, annual appeal gifts, memorials, donations commemorating anniversaries and birthdays, specific programs or events represents funds in this category which contribute 8% of the Institute's annual income.

Donors to and members of the FIA provide the foundation for all of the Institute's activities. We are grateful for the participation of the large community of donors who support the Flint Institute of Arts.

Membership

Membership dues represent 6% of the FIA's annual income and there are many ways to support the museum through membership:

- Membership levels begin at \$20 annually for a Youth (ages 2.5–12) or a Student (ages 13+) and progresses to our highest level of Rubens Society, \$1,000+ annually.
- Whether an individual or a corporation, there are many levels of membership from which to choose. Basic benefits are enjoyed by all, and higher level donors receive extended benefits, such as reciprocal membership privileges to over 450 museums nationwide at the Sustainer level (\$100) and above.
- As noted above, the Rubens Society is the highest level of membership (\$1,000+) whose contributions generate more than \$100,000 to the budget. Society members are invited to three exclusive events throughout the year.
- The FIA's Art School is a strong promoter of membership as members receive a discount on art classes. Of new members who joined the FIA, 27% joined through the Art School.
- The Print Society was established in 2007. This Society is limited to 100 members who, after first becoming a member of the FIA at the Family level (\$50) or above, received a commissioned print by a noteworthy artist. The Society is dedicated to the connoisseurship, the pursuit of personal collecting, and the purchase of prints to augment the FIA's collection.
- Also established in 2007, the FIA College Town initiative provides free memberships to students at Kettering University, University of Michigan-Flint, Mott Community College, and Baker College. Students received many of the basic benefits, but received no mailings. Instead, they were updated through E-Newsletters. Introduced in 2009, Thursday evening free College Town Films were subsidized by the four institutions. A Student Advisory Council with representatives from each college organized special membership events. They also made recommendations to Museum staff regarding film selections, programs, and services that are of interest to College Town members. The FIA expanded gallery hours until 9:00p on Thursday evenings at the suggestion of the Student Advisors.

Please see pages 29–38 for this fiscal year's membership listing.

Events & Facility Rentals

The Flint Institute of Arts offers an active schedule of events for members and the general public throughout the year including Holiday Walk and the Founders Society's First Frost Fine Arts and Craft Fair. Annual fundraisers at the FIA are diverse, appealing to all demographics. Each event has a committee of devoted and hardworking volunteers that are active in all areas of planning. From Beer Tasting and Wine Tasting to the Community Gala and The Party, the FIA continues to create a diverse palette of events to raise funds for the museum and engage the ever-growing community.

5th Annual Art on Tap Beer Tasting

9.8.12

Attendance: 655

Sponsors: Al Serra Auto Plaza; Applebee's Neighborhood Grill & Bar (signature sponsor); Big Apple Bagels, Grand Blanc; Brown & Brown Insurance; Bueche's Food World; Cars108; CBS Outdoor; Community Podiatry Group, P.C.; Drs. Shawn Reiser & David Taylor; Janey & Jim Dillard; Diplomat Specialty Pharmacy; Don Franco Salons; Dortch Enterprises LLC (In memory of Arthur Hurand); Kathy & Harry Eiferle; ELGA Credit Union; Fabiano Brothers; Fenton Insurance Group, Peter Serra; Fifth Third Bank; Kevin J. Gaffney, M.D. Dermatology; Genesee Urgent Care, Dr. Ayman Haidar; Genesee Valley Rotary; Hanczaryk Chiropractic Neurology Group; John P. O'Sullivan Distributing; Ketzler's Florist; Landaal Packaging Systems; Lewis & Knopf, CPAs P.C.; Little Joe's Restaurant; Mark Mikolajczak; Drs. Bobby & Nita Mukkamala; Kay L. O'Malia & Don Fochtman; Jeremy Piper, Attorney at Law; Randy Piper & Susie Stuewer; Randy Wise Automotive; Raymond James & Associates, Raymond J. Kelly III, David P. Kelly, Investment Advisers; Right Angle Lawn Care; ROWE Professional Services Co.; Elisabeth, Ghassan, Lauren & Mark Saab; Kathryn & Chuck Sharbaugh; Special Occasions; The Torch Bar & Grill; Tropi Tan Tanning Salons; UBS Townsend Morgan Group; WCMU; Whigville Market; Doug & Dawn Wyrwicki, VG's; Yeo & Yeo, CPAs & Business Consultants; YeotisRealty.com

22nd Annual Thompson Lecture

10.22.12

Attendance: 130

Sponsor: Dr. & Mrs. Jack W. Thompson Lecture Fund

7th Annual First Frost Fine Arts & Crafts Fair

11.3.12 – 11.4.12

Attendance: 2,469

Sponsors: Mary Coleman; Dort Federal Credit Union; Fratz Consignment; Gerych's Distinctive Flowers & Gifts; McLaren Flint; Susan Philpott-Preketes; Ghassan & Manal Saab; WCMU; Zito Construction

Sheppy Dog Fund Lectures

11.29.12

Attendance: 108

5.29.13

Attendance: 134

Sponsor: Dr. Alan Klein

Holiday Walk

12.4.12

Attendance: 4,056

Sponsor: The Children's Office, Dr. Kienan Murphy

6th Annual Community Gala

12.21.13

Attendance: 335

Sponsor: ABC12; Alpha Phi Alpha Fraternity, Epsilon Upsilon Lambda Chapter; Jim & Andrea Ananich; Baker College, Center for Graduate Studies; Joe & Clara Blakely; James & Kathryn Boles; Eleanor Brownell; Gail Buckner Odom; CBS Outdoor; The ChoSen Few Corporation; Cracker Barrel Old Country Store; Davenport University; Delta Sigma Theta Sorority, Inc. Flint Alumnae Chapter; EEMC, LLC (Erica Leverette-Traore, CE); FM Financial Credit Union; FUNchitecture, LLC; Mr. Tendaji W. Ganges; Genesee County Community Action Resource Department; Genesys Health System; Grand Blanc Motorcars,

LTD; Tadd Haburn, CPA; Hamilton Community Health Network; Sam & Gracie Harris; Louis Hawkins; HeathPlus of Michigan; Lynne Hurand; Kettering University; Kathryn Koegel; Lawrence E. Moon Funeral Home; Diane & John Lindholm; Loving Hands, Inc.; Loyst Fletcher, Jr. & Associates; McLaren Flint; Mott Community College; Mott Community College, Workforce Development; Dr. & Mrs. Kienan F. Murphy; NAACP, Flint Chapter; The Pierians; Mr. Milton & Dr. Brenda Rogers-Grays; Ruth Mott Foundation; The Rutherford Group; Security Credit Union; Kathryn & Chuck Sharbaugh; Shedd-Fraiser PLC; Shelley Spivack & Linda Pylypiw; UAW Region 1-C; United Way of Genesee County; University of Michigan-Flint; University of Michigan-Flint, College of Arts & Sciences; WCMU; Weaver Family Dentistry; The Williams Firm, P.C.; Woodrow Stanley for State Senate; Dean & Lynda Yeotis

Intercollegiate Lego Competition

2.16.13
Attendance: 916

Sponsors: Baker College; Flint Institute of Arts; HAP; Kettering University; Michigan Council for Arts & Cultural Affairs; Mott Community College; University of Michigan-Flint

Contributors: Churchills; Donna's Donuts; Don Pablo's; Flint Crepe Co.; Hooters; Italia Gardens; Lunch Studio; Mancino's; MTA

14th Annual Wine Tasting

3.9.13
Attendance: 264

Sponsors: ABC12; 501 Bar & Grill; Alexander J's Smokehouse; Artistic Decorating; Atlas Valley Country Club; Bella Birches; Bennett Telephone Answering Service; Patrick J. Botz D.O. & Jodi Botz; Scott & Nicole Breslin;

Brickstreet Bar & Grill; Building Blocks Day Care; CBS Outdoor; Cooper Commercial Group; Cork on Saginaw; The Cottage of Davison – Dean & Hilde Bonesteel; Donlan's Fish & Seaoods – Corunna Rd.; Stephen & Sandra Dyball; East Michigan Associates, Donald J. Hardman, MD; Fandangles'; Mel & Wendy Flamenbaum; Flushing Vision Source – Dr. & Mrs. Michael Wallace; The French Confection; The French Laundry; Eric S. Gasper – Edward Jones Investments; Genesys Health System; Good Beans Café; The Green Group at Morgan Stanley; Sam & Gracie Harris; Michael J. Hebner; William J. Hentgen; Imperial Beverage; J & J Importers; J.P. O'Sullivan Distributing; Jamie Joseph State Farm; Kelly-Younger Interiors; McCredie Insurance; McGuirk Realty; Merrill Lynch; MLive/The Flint Journal; Matthew L. Norwood, Attorney at Law; Paradyme Art Studio/ Lynne A. Taft, Attorney at Law; Mark & Kate Piper; Randy Wise Automotive Team; Redwood Steakhouse; Larry Smithkey; Tom Staley Custom Builder Inc.; Two Birds Design & Décor; Veritas Distributors; Vintage Wine Company; WCMU; Werschky & Lewis Family Dentistry

The Party

6.1.13
Attendance: 436

Sponsors: Al Serra Auto Plaza; All-Weather Seal; Michel & Hilda Ansara; Dr. Christopher & Shannon Ash; Associated Radiologists of Flint, P.C.; ATI Group; Baker College; Band Ayd Systems; Bodman PLC; Eleanor Brownell; CBS Outdoor; Jeff Childers, Attorney at Law; The Children's Office – Dr. Kienan F. Murphy; Cline, Cline & Griffin; Community Podiatry – Drs. Shawn Reiser & David Taylor; Dr. Zouheir & Nina Fares; Joanne & Bob Fuller; FUNchitecture; Genesee Regional Chamber of Commerce; Genesee Urgent Care, Dr. Ayman Haidar; Gerych's; Brenda & Lee Gonzales; HealthPlus of Michigan; Historic Capitol Theatre; The Hurand Family; Dr. Prasad & Jayashree Kommareddi; Landaal

Packaging Systems; Macksood's Fun Center; Olivia Maynard & Olof Karlstrom; Drs. Bobby & Nita Mukkamala; My Sister's Design; Matthew L. Norwood, Attorney at Law; Olmsted Associates, Inc.; Suellen J. Parker; The Print Shop/ Zip Mailing; Drs. Venkat & Rama Rao; Redwood Steakhouse; REMAX John & Jennifer Wentworth; Resource Recycling Systems; ROWE Professional Services; Dr. Daniel & Mary Ryan; Ann & Khalil Saab; Ghassan & Manal Saab; Tim & Martha Sanford; Philip & T. Ardele Shaltz; Siwek Construction; Spartan Printing; Stephens Wealth Management Group; Summerset Salon Day Spa; Swartz Ambulance; The Torch Bar & Grill; Catherine & John Tremaine; UPS Financial/Thomas Townsend; Werschky & Lewis Family Dentistry; Dr. Martin W. Werschky; Dean & Lynda Yeotis

46th Annual Flint Art Fair

6.8.13 – 6.9.13
Attendance: 7,000

Sponsor: Meijer
In-kind Sponsors: D.A. Munger Security Agency; Emittera Environmental USA; Halo Burger; Wheeler Party Rental

Facilities Rentals

7.1.12 – 6.30.13
Attendance: 6,002
Rentals: 61

SUPPORT

Each year, support groups donate thousands of dollars and volunteer hours to the Institute in support of exhibitions, art acquisitions, and programs. The Flint Institute of Arts is deeply grateful to the members of the Friends of Modern Art and the Founders Society for their generous support.

Friends of Modern Art

Letter from the President, Mike Wright

The past year has been a productive period for the Friends of Modern Art and the board that governs it. Utilizing grant funds the FOMA board of directors worked throughout the year with a developmental partner to refine and focus our mission and advance a strategy to better implement that vision. Work was carried out to create a new FOMA website, with plans for an official launch in the Fall of 2013. FOMA provided \$25,000 towards support for the critically acclaimed exhibition *Winfred Rembert: Amazing Grace*. A FOMA member reception was held at the end of that exhibition, which allowed our membership a chance to enjoy a truly unique guided tour led by the FIA director and curator. For our core programming piece, the FOMA Film Series, FOMA contributed \$23,301 to provide our community with an unparalleled film experience for 38 weekends of the year. Finally, the 46th annual Flint Art Fair brought nearly 10,000 visitors to the grounds of the Flint Institute of Arts. This is the primary fundraiser for FOMA, and it would be impossible to execute this important event without the tireless help of our volunteers and the assistance of FIA staff.

Officers

Mike Wright, *President*
James Draper, *Vice President*
JoAnne Ingram, *Secretary*
Judy Johnson, *Treasurer*

Board of Trustees

Colette Essa
Nora Fisher
Christopher Kelly, Jr.
Eric Marx
Michael Rucks
Kimberly Streby
Lynne Taft-Draper



Founders Society

Letter from the President,

James D. Draper

The Founders Society pledged \$25,000 in support of the Flint Institute of Arts in our fiscal year 2012–2013. After a review of our financial status, for this year this amount was recently increased to \$27,000 to match the FIA's original funding request. These pledges were to support the publication of the FIA Magazine (\$15,000), library (\$2,000), and exhibitions (\$10,000). These monies were delivered to the Flint Institute of Arts on June 18, 2013.

The 2012 revenue from *First Frost Fine Arts & Crafts Fair* was \$20,162. Our initial foray this past year into working as volunteers for several days and evenings with two local poker pavilions netted \$4,222. *A Lush Life*, a music and song review, held in Isabel Hall in October generated \$456. Our second piano recital, *Viennese Night*, by pianist, Idil Ulgen, filled the Bray Gallery in March and generated \$2,566 in income. In May we hosted DuMouchelles Art Galleries for our first ever appraisal fair in Isabel Hall. This generated \$2,449 in income.

Various travel and day trip initiatives generated net income to Founders of \$5,699. A sold-out tour to Italy plus a return trip to Grand Rapids for the increasingly popular ArtPrize contest is scheduled for 2013, which will generate new income.

As of May 2013 the Art Sales & Rental Gallery has transferred \$4,500 from its account to the Founders account. These are proceeds from its sale or rental of works of art by local artists.

In the spring of 2012 the Founders Society initiated a \$10 annual membership fee. A membership benefit package included complementary admission to the First Frost Arts & Fine Crafts Fair plus discounts and gift cards to Art Sales & Rental Gallery for Founders Society members. As of the June end-of-year Founders meeting, membership was 254. The FIA collects those monies for Founders as part of the regular membership renewal process. We will receive our first annual dues disbursement from the FIA after a final end-of-year membership count on June 30, 2013.

On December 3, 2012, we hosted our traditional holiday luncheon for all FIA staff members in Isabel Hall. It was our way to thank the FIA staff for the many ways in which they generously assist the Founders Society in helping to fulfill its mission.

Income generated from traditional and new activities has enabled the Founders Society to increase its overall net income after meeting our expenses and FIA pledge by over \$10,000 leaving us with a cash and CD balance of \$64,979. A final end-of-year adjustment will be made upon receiving our dues income for this fiscal year. New fundraising events are under review for the future. In addition to fundraising activities this past year, members of the Founders Society have collectively donated thousands of hours of service to the ultimate benefit of the Flint Institute of Arts. In May 2013, Founders added two new members to our Board of Directors and welcomed back two members who had sat out a mandatory year after being on the board for six years. The Founders Society as a group remains strong and committed to the support of the Flint Institute of Arts for now and into the future.

Officers

James D. Draper, *President*
Sheila Smith & Trish Zito-Smith, *Co-Vice Presidents*
Candi Pfaff, *Secretary*
Sam Burdick, *Treasurer*
Perry Ann Owen,
Corresponding Secretary
Susan Steiner Bolhouse,
Immediate Past President

Board of Trustees

Jeneil Applegate
Patricia Burdick
Ann Chan
Mary Coleman
Billie Fisher
Vicki Frappier
William Hentgen
Hulya Hizioglu
Bess Hurand
Lynne Hurand
Joanne Ingram
Judith Ingram
Dahna Loeding
Rki Petersen
Genie Plucer
Laurie Prochazka
Saroja Reddy
Paul Rozycki
Tammy Schultz
Jackie Scott
Sheila Smith
Robert Van Duyne
Mary Van Duyne
Trish Zito-Smith



CONTRIBUTIONS

Annual Appeal

Anonymous
Mr. & Mrs. Ezra R. Artis, Sr.
Dr. & Mrs. Patrick Atkinson
Mr. & Mrs. Kenneth G. Aurand
Mr. & Mrs. Richard P. Baks
Mr. & Mrs. Kelly B. Beardslee
Dr. & Mrs. William D. Beck & Kristen
Mrs. Doris Beebe
Mr. & Mrs. Michael J. Behm
Dr. Morley M. Biesman
Ms. Jane M. Bingham
Ms. Susan Steiner Bolhouse
Mrs. Edmund Brownell
Ms. Ginanne Brownell
Mr. & Mrs. Tom E. Butts
Mr. & Mrs. Joe Caine
Ms. Sally Case
Mr. & Mrs. James Cherry
Mr. Bryan Christie
Ms. Melba R. Clapp
Rob & Kathy Cojeen
Ms. Mary Coleman
Community Podiatry Group, P.C.
– Dr. David Taylor, Dr. Shawn Reiser, and Dr. Dean Singer
Mr. & Mrs. Robert Courneya
Mrs. Nancy M. Cronin
Mrs. Nancy J. Cunningham
Ms. Gail M. Curry
Mr. Robert L. Daly
Mr. & Mrs. Wm. Stefan Davidek
Ms. Jeanne Dobes
Mr. James & Dr. Carol Dowsett
Ms. Elizabeth DuMouchelle & Mr. Leonard F. Chari
Mr. Ryan M. Eashoo
Mr. & Mrs. Harry L. Eiferle, Jr.
Mrs. Loretta C. Ellwood
Mr. & Mrs. Bennett Engelman
Ms. Gisele Farah
Mr. William Farmer
Mr. Michael Fives
Mr. & Mrs. James P. Ford
Mr. Richard W. Fortner
Mrs. Florence J. Fugenschuh
Dr. & Mrs. Scott A. Garner
Mr. Jeff Garrett
Ms. Lee Giacalone
Mr. & Mrs. Dennis Gilbert
Mr. Anthony Gittens
Ms. Tracee Glab
Jeanne & Ralph Graham
Ms. Regan Guevara
Mrs. Julius Gutow
Dennis & June Haley
Ingrid Halling
Mr. Gary Hankinson
Ms. Janice T. Harden
Mr. & Mrs. Daniel Harrett
Mr. & Mrs. Joel H. Harris
Samuel & Graciela Harris
Mrs. Diana Harsch
Mrs. James Hastings
Mr. Louis A. Hawkins
Ms. Annetta Hendrickson
Mr. & Mrs. Kenneth R. Henley
Mr. & Mrs. Terry Henry
Mr. & Mrs. John B. Henry III
Mrs. Ernie Hermann
Mr. & Mrs. Jeffrey J. Himelhoch
Dr. & Mrs. John V. Hinterman
Mr. Larry D. Howell
Mrs. Susan Hungerford
Ms. Lynne Hurand
Mr. & Mrs. Christopher Iden
Judith M. & Robert J. Irwin II
Ms. Heather Jackson
Ms. Judy Johnson
Ms. Jane M. Johnson
Mr. & Mrs. Mark Jacobson
Ms. Mollie Jones
Mr. Johnnie Jones
Mr. Sam Jones & Dr. Beverly Jones
Dr. Benjamin E. & Estelle Kaufman
Ms. Brenda Kendall
Mrs. Nancy Kirby
Dr. Alan Klein
Mr. & Mrs. Norman Kleiner
Mr. & Mrs. Frederick L. Kump
Mr. Miles Lam
Rev. Reginald V. Lancaster & Dr. Karen R. Wilkinson
Mrs. Dawn Laturneau
Dr. & Mrs. Paul Lauber
Ms. Sheena Law
Mr. & Mrs. James Lay
Dr. & Mrs. Leslie L. LeMieux, Jr.
Mr. Max Lepler & Mr. Rex L. Dotson
Prosecutor David & Therese Leyton
Mr. & Mrs. Tom Lillie
Mr. & Mrs. Glenn Lysinger
Mr. J. Brian MacDonald
Mr. Laurence E. MacDonald
Ms. Doris Malfese
Ms. Jeanette R. Mansour & Mr. Joe Green
Mrs. Susan Marr
Dr. & Mrs. Berton J. Mathias
Mr. Donald McCombs
Mr. & Mrs. Ted Meadors
Mr. & Mrs. Robert D. Mills
Ms. Barbara Mirsky
Mr. Thomas Mitchell
Mrs. Sally J. Moss
Mr. & Mrs. Michael Munger
Mr. & Mrs. Alexander C. Murray
Ms. Sharon Y. Naughton
Mr. & Mrs. James Nicolai
Mr. & Mrs. Brian M. Nolan
Mr. Don Olmsted
Mr. & Mrs. Ronald Oskey
Mr. & Mrs. John Pavlis
Ms. Jacqueline Piechowski
Mrs. Karan A. Pinkston
Dr. & Mrs. W. Archibald Piper
Mrs. Stella Poulos
Mr. John S. Pryor
Ms. Ann Richards
Mr. & Mrs. John L. Riegler, Jr.

Mr. & Mrs. Michael J. Riha
Ms. Pat Robinson
Dr. & Mrs. Paul Roetter
Mr. Scott Romanowski
Mr. & Mrs. George Rosenberger
Drs. Michael & Virginia Rucks
Mrs. Ellajane S. Rundles
Mr. & Mrs. Khalil M. Saab
Ms. Sherren Sandy & Family
Mrs. Miriam S. Schaffer
Ms. Grayce Scholt
Mrs. Trudi Schreiber
Dr. & Mrs. Paul E. Schroeder
Mr. & Mrs. Howard S. Schultz
Mr. & Mrs. Patrick Shanahan
Mr. & Mrs. Howard S. Shand
Chuck & Kathryn Sharbaugh
Mr. & Mrs. Brent A. Shook
Mr. & Mrs. George Skaff
Dr. Ernestine R. Smith
Mr. & Mrs. J. Parkhill Smith
Mr. & Mrs. Worley Smith
Mr. & Mrs. James Spangler
Ms. Shelley R. Spivack
Mrs. Emma Lou St. Onge
Mr. Martin Stefan
Rabbi Karen Compane & Mr. Howard Steinberger
Shirley A. Stevens & Bob Tsesedder
Mrs. Sally Stevens
Miss Barbara Stewart
Mr. Paul Stirling
Mr. & Mrs. William R. Stolpin
Mrs. Helene J. Streich
Ms. Suzanne Sugden
Wesley & Amy Sutkowi
Dr. & Mrs. Thomas Svitkovich
Mr. David Tait
Mr. Billy Traylor
Mr. & Mrs. Glenn Tripp
Dr. & Mrs. Frederick VanDuyne
Mr. & Mrs. Robert J. VanDuyne
Mr. & Mrs. Aldo Vrh
Mr. Charles F. Wagonlander
Mr. David Walters
Ms. Lahna Ward
Ms. Kathleen A. Weiss
Ms. Bernie B. Wentworth
Dr. & Mrs. Jay A. Werschky
Dr. & Mrs. James Williams
Mrs. Janet Williamson
Mr. Gabriel Wilson
Mr. Michael Wilson
Ms. Ruth Winter & Mr. Tom Thibault
Dr. Sue Wisenberg & Ms. Donna Baker
Mr. & Mrs. Michael L. Wright
Dean & Lynda Yeotis
Judge & Mrs. Thomas C. Yeotis
Dr. & Mrs. George Zureikat

Art School

Donna J. Ackerman

Mr. Guy Adamec
Carol Andrews-Goyt
Anonymous
Barbara Asa
Mrs. Mary Beth Atkinson
Mrs. Doris E. Brandt
Francois Farah
FIA students & volunteers
Food Bank of Eastern Michigan
Ms. Regan Guevara
Mr. & Mrs. Thomas B. Lillie
Rochelle Molyneaux in memory of John Molyneaux
Mr. Andrew J. Morton
Ms. Robbie Moten
Runyan Pottery Supply, Inc.
Mr. Roger Salminen
Ms. Mary Seymour
Sud Family Foundation
Ms. Susan E. Thompson
Ms. Shelia Auten in honor of Paul & Joselyn Arteaga
Mr. Richard Barber & Ms. Sharon Baker
Jacquie Bennetts Memorial
John Blankenship
Kim Bodette
Susan Steiner Bolhouse
Loretta Brown
Ms. Sally Case
Mr. Bryan Christie
Clay Club
Michael Cooney
Bob Curtis
Edwin D. Custer
Mrs. Billie Fisher
James & Patricia Ford
Jeff & Tish Garrett
Ms. Lee Giacalone
J. A. Giolitti
Michele Gunn
Norma & Lawrence Hackett
Ingrid Halling
Linda & Richard Harwood
Carol A. Higgins in memory of Garry Wilson
Alan & Sharon Himelhoch
Ms. Valorie Horton
Dr. & Mrs. John S. Isaac
Cheryl & Paul Jordan
Kris & Ken Kaiser
Denise Kleiner
Ms. Karyn Konkel
JoEllen Larzelere
Susanne J. Les & Tim E. Green
Mr. M. Keith Moore
Robert & Deborah Pounds
JoEtta Pyles-Zalewski
Mrs. Mary E. Randall
Judge & Mrs. Robert M. Ransom
Ms. Tammy Ray
Mr. & Mrs. Paul Runyan
Marshall H. Sanders Jr. & Dr. Sharon Simeon
Linda M. Savage & Michael P. Sherry
Ms. Grayce Scholt

Chuck & Kathryn Sharbaugh
Ms. Tracey Stewart
Wesley & Amy Sutkowi
The Art Class
Nelson & Jeanne Thick
Mr. & Mrs. Michael D. Thompson
Daniel G. & Lynn A. Van Norman
Mrs. Janet L. Wachowski
Robert & Susan Wood

Education

Ms. Monique Desormeau
Ms. Rebecca Gale-Gonzalez
Mr. Marshall Shaink
Ms. Emily Varney
Weston Elementary School

Endowment

Foundation

Anonymous
Charles Stewart Mott Foundation

Corporate

Adult Learning Institute

Individual

Anonymous
Ms. Lisa Ballard
Mr. & Mrs. Fred Bellairs
Ms. Diana Cavett
Mr. James R. Chintyan
Mr. & Mrs. John B. Henry III
Mr. James R. Kettler
Dr. Jamile T. Lawand & Mr. Barry J. Carr
Dr. John A. Ley on behalf of Bay Area Water Media Guild
Mr. & Mrs. Joseph Marconi
Ms. Carol Masse
Mrs. Doris Sutton - To benefit youth programs & scholarships

Exhibition Sponsors

Anonymous
Citizens Bank
Flint Sail & Power Squadron
Founders Society
Friends Of Modern Art
Michigan Public Radio
Whiting Foundation

Event Sponsors

ABC 12
Al Serra Auto Plaza
All-Weather Seal
Artistic Decorating, Inc.
Dr. Christopher & Shannon Ash
Associated Radiologists of Flint, P.C.
Baker College Center for Graduate Studies
Baker College

Bennett Telephone Answering Service
Big Apple Bagels
Bodman PLC - Michael & Sharon Stack, Stacey & John Cashen, Christopher & Ann Dine, Renee & Joseph Kochanek, Scott & Shelly Gyorke
Patrick Botz, D.O. & Jodi Botz
Mr. & Mrs. Scott J. Breslin
Brown & Brown Insurance-Fenton
Mrs. Edmund Brownell
Bueche's Food World II
Building Blocks Daycare
CBS Outdoor
Charles Stewart Mott Foundation
Jeff Childers, Attorney at Law
The Children's Office - Dr. Kienan Murphy
Cline, Cline & Griffin PC
Ms. Mary Coleman
Community Podiatry Group, P.C., Dr. David Taylor & Dr. Shawn Reiser
Dr. Christina R. Consiglio
Cooper Commerical Group
The Cottage of Davison/Dean & Hilde Bonesteel
Davenport University
Dee Cramer Inc.
Dewey's Auto Center
Mike & Lori Donlan - Donlan's Fish & Seafoods, Corunna Rd.
Mr. & Mrs. Stephen Dyball
East Michigan Medical Associates, Donald J. Hardman MD
EEMC, LLC (Erica Leverette-Traoré, CEO)
Mr. & Mrs. Harry L. Eiferle, Jr.
ELGA Credit Union
Fenton Insurance Group-Peter Serra
Fifth Third Bank
Mel & Wendy Flamenbaum
Mr. Loyst Fletcher, Jr.
Flint District Library
Flushing Vision Source
FM Financial Credit Union
Fratz Consignment
Joanne and Bob Fuller
Funchitecture LLC
Eric S. Gasper - Edward Jones Investments
Genesee County Community Action Resource Dept.
Genesee Regional Chamber of Commerce
Genesee Urgent Care
Genesee Valley Rotary Club
Gerych's Flowers and Gifts
Ghassan and Manal Saab Fund
Brenda & Lee Gonzales
Grand Blanc Motorcars
The Green Group at Morgan Stanley

Hamilton Community Health Network
Hanczaryk Chiropractic
Mr. Tadd Harburn
Samuel & Graciela Harris
HealthPlus of Michigan
Mr. Michael J. Hebner
Mr. William J. Hentgen
The Historic Capitol Theatre
The Hurand Family
Ms. Lynne Hurand
Jamie Joseph Agency LLC
Kelly-Younger Interiors, Inc.
Mark H. Knight, D.D.S.
Ms. Kathryn Koegel
Dr. & Mrs. Prasad Kommareddi
Landaal Packaging Systems
Lawrence E. Moon Funeral Home
Lewis & Knopf, CPAs, P.C.
John & Diane Lindholm
Little Joe's
Loving Hands, Inc.
Dr. & Mrs. James Lum
Ms. Olivia P. Maynard & Mr. S. Olof Karlstrom
McGuirk Realty, Inc.
McLaren Regional Medical Center
Mr. Mark Mikolajczak
Miller Apple, L.P.
MJ Diamonds Inc
MLive Media Group
MLive & The Flint Journal
Mott Community College
Workforce Development
Drs. Bobby & Nita Mukkamala
Dr. & Mrs. Kienan F. Murphy
My City Magazine - "Vince Lorraine, Sherron Barden"
My Sister's Design, LLC
NAACP Flint Branch Freedom Fund
Neurology Group
Atty. Matthew L. Norwood
Ms. Kay O'Malia & Mr. Donald E. Fochtman
Ms. Gail Buckner Odom
Olmsted Associates, Inc.
Ms. Susan Philpott-Preketes
Mr. & Mrs. Jeremy Piper
Mr. & Mrs. Mark Piper
Randy Piper & Susie Stuewer
Piper-McCredie Agency, Inc.
The Print Shop of Flint Inc/Zip Mailing Co
Ms. Linda L. Pylypiw
Randy Wise Buick/Randy Wise Lincoln
Randy Wise Automotive Team
Rama D. Rao, M.D. - Pain Management
Raymond James Financial, Inc.
Resource Recycling Systems
Right Angle Lawn Care LLC
Dr. Brenda Rogers-Grays & Mr. Milton Grays
Rowe Professional Services Co

Dr. & Mrs. Daniel J. Ryan
Mr. & Mrs. Ghassan Saab
Mr. & Mrs. Khalil M. Saab
Tim & Martha Sanford
Security Credit Union
Philip & Ardele Shultz
Chuck & Kathryn Sharbaugh
The Sheppy Dog Fund, Dr. Alan Klein, Advisor
Siwek Construction Company
Ms. Shelley R. Spivack
Ms. Susan Stuewer
Spartan Printing
Summerset Salon Day Spa
Swartz Ambulance Service
Lynne A. Taft, Attorney at Law/
Paradyme Art Studio
Dr. & Mrs. David Taylor
Tom Staley Custom Builder Inc
The Torch Bar & Grill
Townsend Morgan Group/UBS Financial Svcs
Tom & DeAnn Townsend
Mr. & Mrs. John Tremaine
Tropi-Tan Tanning Salons
Two Birds Design & Decor
UAW Region 1-C
United Way of Genesee County
University of Michigan-Flint
University of Michigan-Flint, College of Arts & Sciences
Werschky & Lewis Family Dentistry
Dr. Martin Werschky
Whigville Market & Party Store
Mr. & Mrs. Michael L. Wright
Mr. & Mrs. Douglas Wyrwicki
Yeo & Yeo CPAs & Business Consultants
YeotisRealty.com
Dean & Lynda Yeotis
Zito Construction

Film Society Sponsors

Carroll G. Baker, Sr. & Kimberly Roberson
Mrs. Edmund Brownell
Mr. Dennis Drenikowski
Mr. & Mrs. John B. Henry III
Merrill Lynch
Dr. & Mrs. Kienan F. Murphy
Ms. Linda L. Pylypiw
Drs. Michael & Virginia Rucks
The Torch Bar & Grill

Film Society Members

Ms. Leslie Acevedo
Mr. & Mrs. Kenneth G. Aurand
Mrs. Doris Beebe
Mr. & Mrs. Ted Bolander
Ms. Susan Steiner Bolhouse
Ms. Marilyn Brown
Mr. & Mrs. Tom E. Butts
Nick & Mary Calandro, Jr.

Ms. Peggy Campbell
 Ms. Candace Caveny
 Sam & Bonnie Chambers
 Mr. & Mrs. Clark Chastain
 Mr. & Mrs. James Cherry
 Mr. & Mrs. Allan Coon
 Samuel & Darylee Coplin
 Ms. Monique Desormeau
 Mr. & Mrs. Tom B. Doherty
 Mr. & Mrs. James D. Draper
 Ms. Bonnie Duhon
 Mrs. Carol Egloff
 Mr. & Mrs. Wilbert Elbert
 Ms. Patricia Emenyonu
 Ms. Geraldine Erwin
 Ms. Nora G. Fisher
 Mr. Richard W. Fortner
 Mr. & Mrs. Robert Gardner
 Ms. Kathleen George
 Mr. & Mrs. Roger Gilmour
 Mr. Tom Glasscock & Ms. Helen Bas
 Mr. & Mrs. Eugene B. Griffel
 Samuel & Graciela Harris
 Mr. & Mrs. John B. Hartranft
 Mr. John Hemingway & Mrs. Connie Palmer
 Mr. & Mrs. Arthur S. Hesse, Jr.
 Mrs. Mary Jo Hobart-Parks
 Mr. & Mrs. James Howlett
 Ms. Barb Huffman
 Mrs. Bess Hurand
 Mr. Kris Johns
 Mrs. Charlotte Kasle
 Mr. & Mrs. Franklin H. Kasle
 Dr. & Mrs. Leslie L. LeMieux, Jr.
 Ms. Maureen MacVay
 Ms. Carol Masse
 Mr. & Mrs. Sean McCormick
 Mr. Herb Merrell
 Ms. Christine Mieloch
 Mr. & Mrs. Robert W. Miskow
 Dr. & Mrs. Alan L. Morgan
 Mr. & Mrs. Robert W. Myers
 Bill & Melissa Ogden
 Mr. John Pendell & Ms. Vickie Larsen
 Mr. Frank Phillips
 Mr. Robert S. Piper
 Mr. & Mrs. Stanley Podolsky
 Ms. Theodosia Robertson
 Dr. & Mrs. Daniel J. Ryan
 Mr. & Mrs. Richard T. Schroeder
 Mr. & Mrs. Mark A. Schwartz
 Mr. & Mrs. Bob Shaw
 Mr. Christopher Singleton
 Mr. Michael J. Smith
 Ms. Shelley R. Spivack
 Mr. & Mrs. Larry Stricker
 Mr. Richard Suhr
 Mr. James Toth
 Ms. Sherril VandePutte
 Mr. Mark A. Walters
 Ms. Alice Ward
 Dr. & Mrs. Stuart B. Weiner

Mrs. Mary E. Whaley & Mr. Rick Kroeger
 Mr. & Mrs. William S. White
 Ms. Janette A. Wilson
 Mr. Dale F. Wolfgrams

Digital Projector Fund

Kim Alexander
 Sarah Andresen & Catherine Andresen
 Anonymous
 F. L. Ascencio
 Ken & Janet Aurand
 John & Mary Bach
 Carroll G. Baker & Kimberly Roberson
 Don & JoAnn Becker
 Doris Beebe
 Carolyn & Stephen Bernstein
 Jane Bingham
 Mr. & Mrs. Ted Bolander
 Susan Steiner Bolhouse & William S. Ballenger III
 Donald A. & Lavonne C. Bomeli
 Dolores Borrow
 Ed & Kathy Bradley
 Marilyn Brown
 Eleanor Brownell
 Tom & Denise Butts
 Lois J. Callan
 Wade Carver & Heather Meier
 Mike & Lee Ann Chaffee
 Sam & Bonnie Chambers
 Kay & Jim Cherry
 Melba Clapp
 Mark & Kate Corrigan
 Jim & Anne Cummins
 John V. Dempsey & Margo Lakin
 Samuel R. Dismond, Jr. & Mrs. Janice A. Dismond
 Mary Downey
 James & Lynne Draper
 Ryan Eashoo
 Lynn Elliott
 Loretta Ellwood
 Bennett & Sylvia Engelman
 Jim Davis & Carol Fabrizio
 Nora Fisher
 Michael Fives
 Founders Society
 David & Susan Fultz
 Scott & Lynn Garner
 Sue & Doug Goering
 The Grafted Root Eatery
 Earl E. Gravlin & Julia Sullivan
 Rhina & Gene Griffel
 Ingrid G. Halling
 Henry & Nancy Hanflick
 Karolatta Heath
 Mr. & Mrs. John B. Henry III
 Terry & Cindy Henry
 Mr. Larry D. Howell
 Anne & James Howlett
 Helen R. Hoyt
 Gary & Carol Hurand

Charlotte Kasle
 G. Donald & Elaine Wolfe Kaye
 Kitty Kelly
 B. Kendall
 Dale & Denise Keipert
 Dr. Alan Klein
 Albert & Barbara Koegel
 Jim & Lenore Kolhoff
 Ann Kraft
 Byron & Margie Latter
 Betty Leavitt
 Mr. & Mrs. Raymond Lee
 Linda & Leslie LeMieux, Jr.
 Max Lepler & Rex L. Dotson
 Carl & Linda Leser
 Mr. & Mrs. Thomas B. Lillie
 Jeanette Lindsey & David Lindsey
 Maureen S. MacVay
 Carol Masse
 Berton & Mary Lou Mathias
 Rosellen McAlear
 Tom & Sue McNally
 Ted & Linda Meadors
 Kathleen Muench
 Dr. & Mrs. Kienan F. Murphy
 Walter & Elizabeth Nagel
 Gerald & Anita Naugle
 Jon & Margaret Northrup
 James & Perry Ann Owen
 Betty J. Pearson
 Carl & Nancy Pohly
 Dr. & Mrs. George D. Politis
 Linda L. Pylypiw
 Gary & Barb Reetz
 Sally Reigle
 Edith Robbins
 Elizabeth & Ralph Rossell
 Paul & Nancy Rozycki
 Michael & Virginia Rucks
 Marshall H. Sanders Jr. & Dr. Sharon Simeon
 Miriam S. Schaffer
 Grayce Scholt
 Howard & Tammy Schultz
 Marsha V. Schwarz
 Pat & Carol Shanahan
 Chuck & Kathryn Sharbaugh
 Bob & Betty Shaw
 Beverly Shomsky
 John & Emily Siler
 Paul Stirling
 Ms. Suzanne Sugden
 Richard & Marie Suhr
 Robert R. Thomas
 Don Tinson II
 Shirley Stevens & Bob Tressedder
 Glenn & Ellen Tripp
 Rita Valley
 Robert & Mary VanDuynes
 Sue Wedda
 Mitch & Mary Weiss
 Janet Williamson
 Dale Wolfgram
 Mary Wolski
 Michael & Cristina Wright
 Dean & Lynda Yeotis
 Judge & Mrs. Thomas C. Yeotis

General Contributions

Charles Stewart Harding Foundation
 Charles Stewart Mott Foundation
 Founders Society
 Mr. Robert Jacobs
 Derrick F. Jones
 Dr. Jamile T. Lawand & Mr. Barry J. Carr
 Mr. Max Lepler & Mr. Rex L. Dotson
 Michigan Council for Arts and Cultural Affairs
 Dr. & Mrs. Kienan F. Murphy
 Jay & Marilyn Nelson of the Nelson Family Foundation
 Mrs. Jean Valley

Gift of Membership

Ms. Shelia Auten for Paul Arteaga & Joselyn Arteaga
 Ms. Cheryl Braysher for Aron McCormick
 Mrs. Alma Carlisle for Judith Carlisle
 Ms. Martha Chaltraw for Belen Connelly
 Ms. Patricia J. Cleland for Sandy Malnar
 Mr. Phil Dixner for Braeden Dixner
 Joan Fischer for Alyssa LaFave
 Joanne & Bob Fuller for Trent & Jennifer McEntire
 Ms. Patricia Gage & Mr. Bill McKay for Richard & Marsha Reed
 Ms. Patricia Gage & Mr. Bill McKay for Cynthia Robson
 Ms. Kathleen George for Kathleen Moore
 Mrs. Julius Gutow for Daryl Bond
 Ingrid Halling for Lee Maxwell
 Ms. Janet Hiles for Deirdra Bezemek & Daniel Rodriguez
 Mr. & Mrs. Gary J. Hurand for Sarah Hurand & Elie Weiss
 Mr. & Mrs. Gary J. Hurand for Josh Hurand
 Ms. Lorraine Kasper for Connor Ulbright & Braylin Ulbright
 Dr. Benjamin E. & Estelle Kaufman for Prosecutor David & Therese Leyton
 Mr. Connor Kelly for Virginia Gaffney
 Mr. & Mrs. Stephen Larzelere-Kellermann for JoEllen Larzelere
 Ms. Sarah Letterman for Rebecca Letterman
 Mr. Tom Mahard for Glen Allen Pruett
 Mr. Roger McGuffin for Doris McGuffin
 Mr. & Mrs. James Mikulski for Mary Burdis

Mrs. Shirley Mitchell for Charlene Miller
 Ms. Robbie Moten for Ronald Artis
 Ms. Mary Parks for Peggy Arnes
 Mrs. Fouad Rabiah for Victoria Ybarra
 Mrs. Fouad Rabiah for William Rabiah Harmon & Sarah Rabiah Harmon
 Mrs. Sharon Rickard for Wade & Kim Laine
 Mr. & Mrs. Nicholas Robinson for Robert & Judith Minier
 Mr. & Mrs. Khalil M. Saab for Ghassan K. Saab
 Ms. Cherlyn Satkowiak for Jeanna Gooch
 Ms. Cherlyn Satkowiak for Susan Marlow
 Ms. Michele Scott for Janice Scott
 Mr. & Mrs. Brent A. Shook for Marvin & Dolores Allen
 Mr. Patrick Simen for Margaret Simen
 Mr. Bryan Smith for Gary Smith
 Mr. Michael Sprague & Dr. Janet Sprague for Mary Sprague
 Ms. Keely Sugden for Suzanne Sugden
 David & Jennifer Wagner for Neil Walker
 Ms. Tracy Warren for Matt McIlroy
 Ms. Wanda A. Wells for Brandy, Steve, Morgan, & Shelby Hodge
 Mr. & Mrs. William S. White for Tiffany & Bob Lovett

Grants

An anonymous donor of the Community Foundation of Greater Flint
 Arthur G. Bishop Charitable Trust Community Impact Fund and from an anonymous donor of the Community Foundation of Greater Flint
 Farrehi Family Foundation, Inc. FirstMerit Bank
 The Foundation of the American Institute for Conservation of Historic and Artistic Works
 Isabel Foundation
 James A. Welch Foundation
 Katharine B. Miner Trust
 Kettering University
 Merkley-Elderly Charitable Trust
 Mott Community College
 Nartel Family Foundation
 Peter D. & Nancy P. Kleinpell Family Fund of the Community Foundation of Greater Flint
 PNC Foundation
 The Sheppy Dog Fund

Sidney & Margaret Stewart Endowment Fund of the Community Foundation of Greater Flint
 Stella & Frederick Loeb Charitable Trust
 Target
 University of Michigan-Flint
 Mrs. Claire White
 Mr. William S. White
 Youth Initiative Program Fund of the Community Foundation of Greater Flint

In-kind Sponsor

Michigan Public Radio

Print Society

Mrs. Kandice Andrews
 Mr. & Mrs. Michael J. Behm
 Mr. & Mrs. Robert L. Bessert
 Mr. & Mrs. Ryan & Tracy Bessert
 Mr. & Mrs. Dean Bonesteel
 Mr. Joseph Coriaty
 Mr. & Mrs. F. James Cummins
 Mr. Greg Edquist
 Mr. Thomas M. Gervasi
 Ms. Ronda W. Goldfarb
 Mr. Mark Hamel & Mr. Mike Green
 Mr. & Mrs. Richard S. Harris
 Samuel & Graciela Harris
 Mr. Louis A. Hawkins
 Mr. & Mrs. Neal Hegarty
 Ms. Valorie Horton
 Ms. Ann Howard
 Mr. & Mrs. Gary J. Hurand
 Mr. Josh Hurand
 Ms. Lynne Hurand
 Ms. Sara Hurand & Mr. Elie Weiss
 Judith M. & Robert J. Irwin II
 Ms. Jimmie Johnson
 Mr. & Mrs. Christopher S. Kelly, Sr.
 Mr. & Mrs. John Kopp
 Mrs. Jennifer Lane & Family
 Drs. Scott & Lisa Langenburg
 Dr. Jamile T. Lawand & Mr. Barry J. Carr
 Mr. Max Lepler & Mr. Rex L. Dotson
 Bob & Tiffany Lovett
 Mr. & Mrs. Fred Lutten
 Mrs. Susan Marr
 Mr. Michael Martin & Mr. Bryan Paris
 James R. & Helen Sue Morgan
 Drs. Bobby & Nita Mukkamala
 Dr. & Mrs. Kienan F. Murphy
 Mr. Patrick Murray & Mr. James Edwards
 Mr. & Mrs. Robert W. Myers
 Peter & Michelle Ott
 Mr. Robert Palter
 Mr. Wayne Pickvet & Mr. Bruce A. Barrett

Mr. & Mrs. Mark Piper
 Mr. Robert S. Piper
 Mr. & Mrs. Brian Renaud
 Mr. & Mrs. Timothy C. Sanford
 Ms. Grayce Scholt
 Brent & Valarie Shook
 Mr. Michael Sprague & Dr. Janet Sprague
 Mr. & Mrs. William R. Stolpin
 The Torch Bar & Grill
 Mrs. Susan Trilling
 Ridgway & Shannon White
 Mr. & Mrs. Ridgway H. White
 Mr. & Mrs. William S. White
 Mr. & Mrs. Dean Yeotis
 Mr. & Mrs. Vincent Zamora
 Ms. Trish M. Zito-Smith

Tributes & Memorials

In honor of Mr. & Mrs. Richard Baks, Mr. & Mrs. John B. Henry III, Mrs. Bess Hurand, Mr. & Mrs. Gary Hurand, Ms. Denise Morgan
 Anonymous

In honor of Michael Burns & Dan Compton's 20th Anniversary
 Mr. Max Lepler & Mr. Rex L. Dotson

In memory of Beatrice Clapp to benefit the Endowment Fund
 Mrs. Rhonda Tubbs

In memory of Frank Clapp
 The Hurand Family

In memory of Dr. Richard E. Cunningham to benefit the Annual Appeal
 Mrs. Nancy J. Cunningham

In memory of Milton F. Darr to benefit the Annual Appeal
 Ms. Elizabeth DuMouchelle & Mr. Leonard F. Chari

In memory of Dr. John F. Egloff Patricia Ellingson
 Gary & Phyllis Huffman
 Ed & Susie Skrelunas

In memory of Dr. John F. Egloff to benefit the Film Series
 Western Hills Living

In honor of a certain new member of the Board of Trustees to benefit General Operating
 Mr. & Mrs. Khalil M. Saab

In memory of Dr. J. J. Gutow & Howard Gutow to benefit the Annual Appeal
 Mrs. Julius Gutow

In memory of Dorothy Harris
 Dr. & Mrs. Leslie L. LeMieux, Jr.

In memory of Mary Alice Heaton
 Mrs. Rosemary R. DeCamp
 Mr. & Mrs. Michael A. Farella
 Joanne & Bob Fuller
 Falding B. Gadola
 Mr. & Mrs. John B. Henry III
 Kathryn Sharbaugh

In memory of Arthur Hurand to benefit the Endowment Fund in support of the Hurand Sculpture Courtyard
 Phil & Tami Forsyth
 M. G. Simon Properties - Marge Simon, Jerome & Jill Fine
 Mr. & Mrs. Carl Riseman

In honor of the Hurand Family being the 2013 recipients of the Piper Family Philanthropy Award
 Ms. Ida L. Epstein

In memory of Donald E. Johnson, Jr. to benefit Endowment
 Mrs. Rosemary R. DeCamp
 Mr. & Mrs. John B. Henry III
 Les & Linda LeMieux
 Chuck & Kathryn Sharbaugh

In memory of Watson Kenworthy
 Ms. Jane M. Bingham
 Ms. Monique Desormeau
 Mr. & Mrs. John B. Henry III
 Chuck & Kathryn Sharbaugh

In memory of Rose Ann MacDonald
 Mr. Laurence E. MacDonald

In honor of Audrey McDonough
 Mr. Thomas McDonough

In honor of Robert Piper's 70th birthday - to benefit the Piper Print Library
 Mr. & Mrs. David F. Barbour

In honor of Michael Rucks' Birthday
 Mr. & Mrs. Walter McCullison, Jr.

In honor of Kathryn & Chuck Sharbaugh - Congrats - To benefit the Endowment Fund
 Ms. Jane M. Bingham

In memory of Michael Stanley
 Chuck & Kathryn Sharbaugh

In memory of Philip Streich
 Mrs. Vera Farah
 Samuel & Graciela Harris

In memory of Vickie Travis
 Kathryn Sharbaugh

In memory of Kenneth & Esther Wiles to benefit the Annual Appeal
 Judith M. & Robert J. Irwin II

In memory of Earnest Williams & Marie Forsy to benefit Art School Scholarship Fund
 Genesee County NOW

MEMBERSHIP

* denotes increased gift level

+ denotes Friends of Modern Art (FOMA) membership

Δ denotes Founders Society membership

Rubens Society (\$1,000 & above annually)

Corporate

Abbott's Meat Inc.
Baker College
Big John Steak & Onion, Inc.
Citizens Bank
Fabiano Brothers, Inc.
Friends Of Modern Art
Genesee Urgent Care
HealthPlus of Michigan
Hubbard Supply Co.
Main Manufacturing Products
Sorensen Gross Construction Co.
Sunset Hills Association+Δ

Individual

Dr. & Mrs. Daniel Anbe+Δ
Mr. Morris J. Arvoy & Ms. Emily McCaleb*+Δ
Dr. D. J. Trela & Dr. David Bailey+Δ
Mr. Carroll G. Baker & Ms. Kimberly Roberson
Mr. & Mrs. Richard P. Baks
Mrs. Beverly Bernard
Mr. & Mrs. Robert L. Bessert+Δ
Dr. William M. Bowling
Mrs. Edmund Brownell+Δ
Mr. & Mrs. Howard J. Bueche
Mr. & Mrs. F. James Cummins+
Mr. Donald Davenport*
Mr. & Mrs. James D. Draper+Δ
Mr. & Mrs. Harry L. Eiferle, Jr.+Δ
Mr. & Mrs. Louis Emmert
Mr. Robert F. Enders
Joanne & Bob Fuller
Falding B. Gadola
Hank & Bonnie Graff
Mr. & Mrs. Neal Hegarty
Mr. & Mrs. T.W. Heitman+Δ
Mr. William J. HentgenΔ
Mr. & Mrs. Richard C. Hockstad
Mrs. Bess Hurand+Δ
Mr. & Mrs. Gary J. Hurand+Δ
Ms. Lynne Hurand+Δ
Mr. & Mrs. Mark Jacobson
Mr. Donald E. Johnson, Jr.
Mr. & Mrs. James N. Johnson
Dr. Benjamin E. & Estelle Kaufman
Michael & Kay Kelly
Mr. & Mrs. Raymond J. Kelly III
Mrs. Harriet B. Kenworthy*
Mr. James R. Kettler
Dr. Samasandrapalya Kiran & Dr. Mona Hardas
Mrs. Nancy Kleinpell
Albert & Barbara Koegel+Δ
Mr. & Mrs. Stephen S. Landaal
Mrs. Virginia R. Landaal
Dr. Jamile T. Lawand & Mr. Barry J. Carr+Δ
Dr. & Mrs. Leslie L. LeMieux, Jr.
Mr. Max Lepler & Mr. Rex L. Dotson

Prosecutor David & Therese Leyton
Mr. & Mrs. John Lindholm
Mr. & Mrs. Mark L. Lippincott*
Mr. & Mrs. Robert McMahan
Mr. & Mrs. William H. Moeller
Dr. & Mrs. Alan L. Morgan
Mrs. Robert C. Morgan
Dr. Bobby & Nita Mukkamala+Δ
Drs. Brad & Linda Murphy
Dr. & Mrs. Kienan F. Murphy+Δ
Edward & Elizabeth Neithercut
Mr. & Mrs. Jay Nelson
Mr. Michael O'Donnell & Mrs. Lisa Saab-O'Donnell
Mr. & Mrs. Patrick O'Sullivan
Mr. & Mrs. Raymond J. Persia
Mr. Randolph P. Piper & Mrs. Susan I. Stuewer+Δ
Mr. Robert S. Piper+
Mr. William H. Piper
Ms. Linda L. Pylypiw+
Mrs. Fouad Rabiah+
Mr. & Mrs. Eino Rajala+
Mr. & Mrs. Jeffrey D. Rocco+
Drs. Michael & Virginia Rucks
Dr. & Mrs. Daniel J. Ryan+
Mr. & Mrs. Khalil M. Saab+Δ
Mr. & Mrs. Timothy C. Sanford
Dr. & Mrs. Paul E. Schroeder+Δ
Mr. & Mrs. Philip Shaltz*
Mr. & Mrs. Howard S. Shand
Chuck & Kathryn Sharbaugh
Mr. & Mrs. James Spangler
Mrs. Helene J. StreichΔ
Ms. Susan E. Thompson+
Mr. & Mrs. James Truesdell, Jr.
Dr. & Mrs. Frederick VanDuyne
Mr. & Mrs. Larry Weber*
Mr. & Mrs. Charles R. Weeks
Dr. & Mrs. Jay A. Werschky+Δ
Mr. & Mrs. Ridgway H. White
Mr. & Mrs. William S. White+
Mr. & Mrs. Dean Yeotis+

Corporate Members

Corporate Donor

(\$500 annually)
Press Engineering Co., LLC

Corporate Supporter

(\$250 annually)
Kevin J. Gaffney, MD Dermatology
Piper Realty Company*
Runyan Pottery Supply Inc.
Sagano Japanese Bistro & Steakhouse
Skaff Carpet & Furniture Co.
The Torch Bar & Grill

Corporate Sustainer

(\$100 annually)
Christie's - Allison Whiting
Christie's - Steven Zick
Great Lakes Legal Team, PLC

Greater Flint Chapter of the Pierians, Inc.
McFarlan Home
Midland Center for the Arts
Luis A. Perez DDS MS PC
Personal Computing Solutions
Pierians, Inc.
Rowe Professional Services Co.
Vogt's Flowers
Yeo & Yeo, P.C., CPA

Individual Members

Donor

(\$500 annually)
Mr. & Mrs. Kelly B. Beardslee+Δ
Dr. & Mrs. Stephen R. Burton+
Mr. & Mrs. Richard H. Kraft+
Drs. Scott & Lisa Langenburg
Byron & Margie Latter+
Mr. & Mrs. David S. McCredie
Mr. & Mrs. William Peterson*
Mr. & Mrs. Lawrence F. Piper
Mr. & Mrs. David Roeser+Δ
Dr. & Mrs. Frederick C. Schreiber*+
Mr. & Mrs. Bob Shaw
Mr. & Mrs. J. Parkhill Smith+
Ms. Bernie B. Wentworth
Mr. & Mrs. Michael L. Wright+

Sponsor

(\$250 annually)
Mr. & Mrs. Fenton A. Addington & Family
Mr. Paul Arteaga & Miss Josclynn Arteaga+Δ
Mr. & Mrs. David F. Barbour+
Mr. Richard M. Barron+
Mr. & Mrs. Michael J. Behm+
Dr. & Mrs. William M. Bernard+
Mr. & Mrs. Stephen Bernstein+
Mr. Theodore Bickerstaff*+
Mr. & Mrs. Michael Bourke
Dr. & Mrs. James Cantwil
Ms. Melba R. Clapp+Δ
Mr. & Mrs. George A. Corser+
Ms. Karen Crusse*+Δ
Mr. & Mrs. Max Dean
Mrs. Rosemary R. DeCamp*
Greg & Karen Eason
Mr. Greg Edquist+
Dr. & Mrs. Cyrus Farrehi+Δ
Mr. & Mrs. Joseph F. Foos+
Mr. & Mrs. Richard FortierΔ
Dr. Brenda Fortunate & Mr. Edward White+
Hon. Judith A. Fullerton & Mr. Ward Chapman
Dr. & Mrs. Scott A. Garner+
Dr. & Mrs. Rudolf Goetz
Mrs. Donna A. Graham
Mr. Earl E. Gravlin & Ms. Julia Sullivan+
Ingrid Halling+Δ

Mr. John Hemingway &
Mrs. Connie Palmer*+Δ
Mr. & Mrs. Christopher Iden*+Δ
Mrs. Agape Kallis
Mr. & Mrs. Wayne W. Knecht*+
Mr. & Mrs. Frederick L. Kump
Mr. & Mrs. John H. Lang+
Mr. Mark Lantz
Dr. & Mrs. Paul Lauber
Miss Kerstin Lawrence*+
Mr. & Mrs. James Lay*+
Mr. & Mrs. William Livengood
Mr. & Mrs. Glenn Lysinger
Mr. Robert J. MacDonald+Δ
Mr. & Mrs. Kenneth C.
MacGillivray
Ms. Maureen MacVay+
Mrs. Sally J. MossΔ
Mr. & Mrs. James Nicolai
Mr. & Mrs. John Nieman
Mr. & Mrs. Carl A. Pohly+Δ
Gary & Barb Reetz+
Mr. & Mrs. Michael J. Riha+Δ
Miss Elisabeth Saab*+Δ
Mrs. Miriam S. Schaffer+Δ
Dr. Teri Sexton
Dr. & Mrs. Milton J. Siegel+Δ
Mr. & Mrs. John P. Siler+
Ms. Ann Marie VanDuyne
Mr. Charles L. Viera
Mr. Charles F. Wagonlander
Mr. & Mrs. Alan Weamer

Sustainer

(*\$100 annually*)

Ms. Leslie Acevedo
Mr. Glen Adams+
Dr. & Mrs. Mehmet Agabigum*+
Mr. Gerald Alcorn+
Mr. & Mrs. Henry Allen+Δ
Mr. & Mrs. Bill Anderson
Mrs. Kandice Andrews+
Mrs. Pauline C. Angle
Mr. & Mrs. William R. Angus+Δ
Mr. & Mrs. Robert Atkinson+
Mr. & Mrs. Kenneth D. Baab*
Mr. & Mrs. Peter M. Bade
Mr. Mark Baker & Mrs. Shelby
Newport
Mr. & Mrs. Michael Barker
Mr. David J. BarkeyΔ
Dr. & Mrs. Walter Barkey
Mr. Keith Barkiewicz+Δ
Dr. & Mrs. William D. Beck &
Kristen
Mr. & Mrs. Donald L. Becker+Δ
Ms. Barbara Beckett & Mr. Dave
Hoyt+
Mr. & Mrs. Fred Bellairs
Mr. & Mrs. Bob Bennett*+Δ
Mr. William L. Bennetts+Δ
Ms. Darlene P. Benore &
Ms. Cornelia Massolo
Mr. & Mrs. Eugene Bielik+Δ
Dr. Morley M. Biesman
Ronald & Lucille Bigelow+

Ms. Jane M. Bingham+Δ
Dr. Stephen Blake
Mrs. Evelyn Nida Blanford &
Mr. Geoffrey G. Kennedy+
Mr. Stewart Bolinger
Mr. & Mrs. Donald A. Bomeli+
Mr. & Mrs. Robert Bottinelli+Δ
Mr. & Ms. Nicholas Bozen
Mr. & Mrs. Barry Braun*
Mrs. Kathleen Brockriede*+Δ
Mr. & Mrs. Donald L. Bronson
Mr. & Mrs. Robert Brown*
Mr. & Ms. Roger H. Brown+Δ
Ms. Marilyn BrownΔ
Mr. & Mrs. Gerard Burnash
Ms. Jennifer Burnett & Mr. Sean
Siebigteroth*
Mr. Jonathan E. Burroughs II
Mr. & Mrs. Joseph Burroughs+
Mr. & Mrs. Tom E. Butts+
Ms. Peggy Campbell
Mr. & Mrs. Adam Carlson
Sam & Bonnie Chambers+
Mr. & Mrs. James T. Chapman
Ms. Deborah Cherry+Δ
Lt. Gov. John D. Cherry &
Hon. Pamela Faris
Robin & Kathleen Childress
Mr. & Mrs. William J. Churchill
Ms. Betty J. ClarkΔ
Mr. & Mrs. James Clodfelter, Jr.
Mrs. Joanne Coates
Ms. Mary ColemanΔ
Dr. & Mrs. Frank W. Cook*
Mr. & Mrs. Thomas Cooper
Samuel & Darylee Coplin
Mr. & Mrs. Richard A. Coscia+
Dr. & Mrs. Marshall Cossman*
Mr. & Mrs. Kenneth Cowan
Mr. Eugene Cronin
Mrs. Nancy M. Cronin
Mr. & Mrs. George Cross
Mr. & Mrs. Daniel Cruz*
Ms. Susan A. Damone
Mr. & Mrs. Wm. Stefan Davidek+Δ
Ms. Susan Davies & Mr. Tim
Broderick*
Ms. Dorothy Gae Davis
Mr. James A. Davis & Ms. Carol M.
Fabrizio
Mr. & Mrs. Donald E. DeGraaf
Mr. John V. Dempsey & Ms. Margo
Lakin+
Mr. & Mrs. David Denn
Mr. & Mrs. Robert W. Devereaux
Ms. Stephany R. Diana & Mr.
Dennis Zawol+Δ
Mr. & Mrs. John C. Dickinson
Mr. & Mrs. Carl A. Diener+
Mr. & Mrs. James C. DillardΔ
Mr. Michael Dingman & Mrs.
Susan Sumner Dingman+Δ
Dr. & Mrs. Samuel R. Dismond,
Jr.+
Ms. Jeanne Dobes+
Mr. & Mrs. Tom B. Doherty+Δ

Dr. Carol & Mr. James DowsettΔ
Mr. James & Dr. Carol Dowsett
Dr. & Mrs. David G. Drake
Mr. & Mrs. Robert F. Dueweke
Mr. Chris & Dr. Jean Dundas+Δ
Mr. Ryan M. Eashoo+Δ
Mr. & Mrs. Richard H. Ebbott
Miss Judith M. Ebner
Murray & Sharon EisenΔ
Mr. John Ellenwood*
Mrs. Loretta C. Ellwood+
Mr. & Mrs. George Emery
Mr. & Mrs. Bennett Engelman+Δ
Mr. & Mrs. Jack W. Ennest
Ms. Adele Ernsberger
Dr. & Mrs. Ali A. Esfahani
Ms. Michelene A. Falk+
Dr. & Mrs. Zouheir Fares*
Ms. Tina Filoromo
Ms. A. Joan Fischer+Δ
Ms. Denise D. Fish+
Ms. Nora G. Fisher*+
Mrs. Pauline Fishler+Δ
Mr. & Mrs. Ron Fitch
Mrs. Evelyn R. Foreman
Mr. & Mrs. Richard Fox+
Mrs. Florence J. FugenschuhΔ
Dr. & Mrs. David A. Fultz+
Ms. Patricia Gage+Δ
Mr. Tendaji W. Ganges+Δ
Mr. & Ms. John Garabelli*
Mr. & Mrs. Robert GarrisonΔ
Ms. P. Diane Gaspar
Mr. John R. Gazall
Mr. & Mrs. Perry Gazzarari
Ms. Kathleen George+Δ
Mr. Thomas M. Gervasi+Δ
Ms. Anne-Marie Gierens &
Mr. Curtis Johnson+
Mr. & Mrs. Christopher Giroux
Mr. & Mrs. Tom Gisewhite+Δ
Mrs. Roberta L. Goergen
Mr. & Mrs. Gerard R. Goyette
Jeanne & Ralph Graham
Ms. Diane Green
Mr. & Mrs. Melvin E. Gregory
Mr. & Mrs. Eugene B. Griffel
Mr. & Mrs. Richard A. Griswold
Dr. Peter Gryson & Mrs. Evelyn
MacKenzie Gryson
Dr. & Mrs. Edwin H. Gullekson
Dr. & Mrs. Robert Hahn
Dennis & June Haley+
Mr. & Mrs. Thomas Halligan+Δ
Mr. Gary Hankinson*
Mr. Chad Hansen+Δ
Frankie & Robert Hardy+Δ
Mr. & Mrs. Daniel Harrett
Mr. & Mrs. James Harrington*
Mr. & Mrs. Joel H. Harris+
Mr. & Mrs. Richard S. Harris+Δ
Mrs. Diana Harsch+Δ
Mr. & Mrs. Ronald J. HartmanΔ
Mr. & Mrs. John B. Hartranft+
Ms. Karolatta Heath+
Ms. Annetta Hendrickson

Dr. & Mrs. Alan Henke+
Mr. & Mrs. John B. Henry III
Mrs. Ernie Hermann
Mr. & Mrs. Joseph Higgins
Mr. & Mrs. Thom Higinbotham+
Mr. Robert Hill & Mr. Steven R. Hill
Dr. & Mrs. John V. Hinterman
Mr. & Mrs. Robert Hockin+Δ
Mrs. Lois D. Hodges+
Mr. & Mrs. Timothy A. Hohn
Ms. Barbara Holmer & Mr. Robert
Stanisch*
Ms. Ethel Hooker+
Mrs. Martha B. Hopkins
Ms. Barbara H. Horcha &
Mr. William Cross+
Mr. & Mrs. W.R. Horning*
Mr. Jeff House & Mr. Jonathan
Shettler
Mr. & Mrs. James Howlett
Mr. & Mrs. Francis Hudson+
Mr. & Mrs. Fred Huntzicker
Mr. & Mrs. Jeffrey Hurand
Ms. Kay Iddins
Ms. Elizabeth Ireland-Curtis*
Dr. & Mrs. John S. Isaac
Mr. William G. Jacoby &
Ms. Sandra K. Schneider
Mr. & Mrs. Al Johnston
Mr. & Mrs. Charles M. Johnston
George & Christine Jones
Mr. Marcus Jones
Mr. & Mrs. Paul Jordan*
Dr. & Mrs. Larry Kage
Mr. & Mrs. Ken Kaiser*
Dr. & Mrs. Larry I. Kassel+
Mr. & Mrs. G. Donald Kaye+Δ
Ms. Linda C. Keller & Mr. Donald J.
Mosher+Δ
Mr. & Mrs. Christopher S. Kelly,
Sr.+
Mr. & Mrs. Daniel Kelly
Mr. & Mrs. James Kelly*
Ms. Kitty Kelly+Δ
Mr. & Mrs. Dale E. Kildee
Mr. & Mrs. Jimmy King*
Mr. & Mrs. Melvin Kipp
Mr. & Mrs. Rod Kipp
Mr. & Mrs. Norman Kleiner*
Mr. Joseph J. Kochanek*
Ms. Kathryn Kohout*+
Mr. & Mrs. Jim Kolhoff+Δ
Mrs. Bella Kritz-Doebeli
Mr. & Mrs. Richard Kalush*
Edward & Donna Kurtz
Ms. Alyssa LaFave
Mrs. Debra L. Lampson-Coats+
Dr. & Mrs. Gary Lange
Mr. & Mrs. Stephen Larzelere-
Kellermann+Δ
Mr. & Mrs. Larry L. Latham*
Dr. Audrey L. Lattie+Δ
Mr. Paul A. Lazar & Ms. Susan P.
Kirby*+
Mr. & Mrs. Raymond Lee+Δ
Stephen & Kathleen Leist+

Mrs. Juldeen Lemke
 Mr. & Mrs. Charles Lendvoyi+Δ
 Ms. Kay Ella Lennerth
 Mr. & Mrs. Carl A. Leser+
 Levine-Day Family
 Mr. & Mrs. Thomas B. Lillie+
 Mr. & Mrs. David E. Lossing+Δ
 Mr. Donald E. Lovejoy+
 Ms. Denise M. Lucas+Δ
 Mr. & Mrs. Clifford Lutz*
 Mr. Laurence E. MacDonald+
 Mr. & Mrs. Larry Magaw
 Mr. & Mrs. John Mair III
 Ms. Doris Malfese
 Ms. Susan Marlow*
 Mr. & Mrs. Brian Martin
 Ms. Susan Martin & Mr. Dan McClain+
 Ms. Yvette Massenberg*
 Dr. & Mrs. Berton J. Mathias+
 Mr. Michael Mathieu & Ms. Barbara Swartz
 Ms. Mary Mavity
 Mr. & Ms. Bernard McAra
 Mr. & Mrs. Patrick W. McAvinchey
 Jack & Pam McCarthy+
 Mr. & Mrs. Trent McEntire
 Mr. & Mrs. James McEwan
 Mr. & Mrs. Brad McFaul
 Mr. William J. McKay+Δ
 Mr. Richard McNally+
 Mr. & Mrs. Thomas B. McNally
 Dr. & Mrs. Kim P. McPheeters
 Mr. & Mrs. Ted Meadors+
 Mr. & Mrs. Michael Melet+Δ
 George & Kathryn Menoutes
 Mrs. Rhoda A. Milgrim*+Δ
 Mr. & Mrs. David C. Miller
 Mrs. Helen G. Millhouse
 Jack & Beverly Mills+
 Mr. & Mrs. Robert D. Mills
 Ms. Juliet Minard & Mr. Scott Stensaas*+
 Mr. & Mrs. Robert W. Misekow+Δ
 Mr. & Mrs. Edward A. Mitchell
 Mr. Thomas Mitchell*Δ
 Mrs. Doris A. Moellering+
 James R. & Helen Sue Morgan+Δ
 Mr. & Mrs. Guy K. Moxam*+
 Mrs. K. Brooke Moynihan & Mr. Eric Minore+
 Miss Kathleen E. Muench+
 Ms. Alice R. Murphy+
 Mr. & Ms. Peter Murphy*
 Mr. & Mrs. Alexander C. Murray+
 The Myatt Family
 Mr. & Mrs. Robert W. Myers+
 Mr. & Mrs. Walter Nagel+
 Mr. David Nassar & Ms. Kara Freeman
 Ms. Sharon Y. Naughton
 Mr. & Mrs. Gerald Naugle
 Mr. Mark E. Neithercut
 Mr. & Mrs. David R. Newbill+
 Mr. & Mrs. John Nielsen*
 Mr. & Mrs. Frank Ninteman

Mr. & Mrs. Brian M. Nolan*+
 Mr. & Mrs. Jon Northrup+
 Mrs. Wilaine V. Northway
 Ms. Diane M. O'Keefe
 Mr. Don Olmsted
 Mr. & Mrs. David Owen-Smith
 Dr. & Mrs. James Owen+Δ
 Ms. Carole A. Pappas+
 Dr. & Mrs. Edward Parish+
 Rev. & Mrs. John G. Park*
 Ms. Mary Parks+
 Mr. & Mrs. Jeff Parrish
 Ms. Nanette Pearson & Mr. Kirby Milton
 Ms. Jeanne Pepper & Mr. Thomas Herman
 Mr. Joseph Perisa+
 Ms. Patti Perkins
 Mr. & Mrs. Eric Petersen+Δ
 Mrs. Candace PfaffΔ
 Ms. Helen Philpott
 David & Randee Pieper+Δ
 Dr. & Mrs. Frederick P. Pike+
 Dr. & Mrs. W. Archibald Piper
 Mr. & Mrs. Drew Pitts+Δ
 Mr. & Mrs. Dudley Place+
 Dr. & Mrs. Mark Plucer+Δ
 Dr. & Mrs. George D. Politis+
 Mr. & Mrs. Curtis Pollack+
 Mrs. Beverly I. Post+
 Mrs. Stella Poulos
 Mr. & Mrs. Robert Pounds+
 Mr. & Mrs. James PowellΔ
 Mrs. Willie J. Powell+
 Mr. & Mrs. Richard Powell*
 Miss Rebecca A. Putnam
 Betty & Richard Ramsdell
 Ms. Ashley V. Randall
 Mrs. Mary E. Randall+Δ
 Judge & Mrs. Robert M. Ransom+
 Mr. Ted Rapson
 Joe & Connie Rau
 Ms. Sally L. Reigle+
 Ms. Lisa Reinert
 Dr. Jacquelyn Reinertson+
 Kelly & Lois Revenaugh
 Mr. & Mrs. A. Davison Rice
 Jane & James Richardson+
 Mr. & Mrs. James P. Ricker
 Mr. Douglas Ricketts
 Mr. & Mrs. Carl Riseman+
 Mr. & Mrs. David J. Roberts
 Ms. Theodosia Robertson+Δ
 Mr. Wayne Robson
 Mr. Dan Roesner & Mrs. Sherri Stephens*
 Mr. Rob Rosario & Ms. Amy Surlis-Rosario+
 Mr. & Mrs. Ralph R. Rossell+
 Mr. & Mrs. Ronald E. Royer
 Mrs. Geraldine Rudduck
 Mrs. Ellajane S. Rundles*
 Mr. & Mrs. Walter Russ*
 Mr. & Mrs. David Sabino
 Mr. & Mrs. Roy Sabo*+Δ
 Richard & Katherine Saunders

Mrs. Amina Sayyid
 Mr. & Mrs. Mark A. Schwartz+Δ
 Mr. & Mrs. Doug Schilbe
 Kenneth & Phyllis Schilling+
 Mr. & Mrs. Peter Schoenherr+Δ
 Mr. & Mrs. Edwin Schreiber
 Mr. & Mrs. Howard S. Schultz+Δ
 Ms. Janet A. Schultz+Δ
 Mr. & Mrs. Curtis Seibert
 Mr. & Mrs. Leo Seide+Δ
 Mr. & Mrs. William A. Shaheen, Jr.
 Mr. & Mrs. Robert L. Shegos
 Polly Sheppard & Family
 Dr. Janice Shimoda*+
 Mrs. Beverly J. Shomsky*+Δ
 Mr. & Mrs. Thomas M. Shubert
 Mrs. Gail S. Shulman+Δ
 Ms. Margaret Simen*+Δ
 Mr. David Simonds*
 Mr. & Mrs. A. Ronald Sirna+
 Mr. & Mrs. Thomas Skunda
 Mr. & Mrs. D. James Smith
 Ms. Joanne P. Smith+
 Ms. Sandra K. Smith+Δ
 Mr. & Mrs. Paul Smyth
 Dr. & Mrs. Benjamin M. Sorscher
 Ms. Edith Prunty Spencer
 Ms. Shelley R. Spivack
 Dr. Morton & Lois Stanley*
 Rabbi Karen Companez & Mr. Howard Steinberger+
 Shirley A. Stevens & Bob Tresseder+
 Miss Barbara Stewart
 Mr. & Mrs. William R. Stolpin
 Dr. & Mrs. Thomas Svitkovich*
 Dr. & Mrs. Johannes Tall
 Ms. Ernelle Taylor+Δ
 Mr. & Mrs. Gordon Taylor
 Dr. & Mrs. Maxwell F. Taylor II*+
 Mr. & Mrs. Carl D. Terwilliger+
 Mr. & Mrs. Henry C. Thoma, Jr.
 Mr. & Mrs. Dale E. Thompson
 Mr. & Mrs. Michael D. Thompson
 Mrs. Ruth P. Thrash
 Mr. & Mrs. Philip E. Timyan
 Mr. & Mrs. Glenn Tripp+Δ
 Dr. & Mrs. Allen F. Turcke*
 Mr. & Mrs. Robert Turley*+Δ
 Mr. Earl Turner+
 Ms. Suzanne Turpen
 Mr. & Mrs. Robert J. VanDuyne+Δ
 Ms. Carlene VanVoorhies+Δ
 Ms. Kathryn Vaughan*
 Mr. & Mrs. William Vredevoogd
 Mr. & Mrs. Aldo Vrh*
 Mr. & Mrs. Frederick S. Waller*Δ
 Mr. Harry Walters
 Ms. Lahna Ward*
 Ms. Carolyn Warren
 Mr. & Mrs. Erik Warren
 Mr. & Mrs. Lynn E. Webb+
 Mr. & Mrs. Fred J. Weber
 Dr. & Mrs. Robert M. Weber
 Miss Beverly Weidendorf
 Mr. & Mrs. Richard C. Weiermiller

Dr. & Mrs. Stuart B. Weiner+Δ
 Prof. Mitchell S. Weiss+Δ
 Mrs. Marjorie B. Wentworth
 Mrs. Marcia Whaley
 Mrs. Mary E. Whaley & Mr. Rick KroegerΔ
 Mr. & Mrs. Charles V. White+
 Dr. & Mrs. James Williams+
 Ms. Ruth Winter & Mr. Tom Thibault*
 Mr. & Mrs. David Withey*+
 Jerome & Judith Wolbert
 Mr. Dale F. Wolfgram*+
 Mr. & Mrs. Keith Wolfgram+Δ
 Mr. & Mrs. David E. Wood+Δ
 Ms. Jessie Wood
 Mr. & Mrs. Robert A. Wood
 Ms. Marta Wyngaard-Tavakoli
 Mr. & Mrs. Douglas Tyrwicki
 Mr. & Mrs. Art G. YeotisΔ
 Ms. Catherine Yeotis
 Judge & Mrs. Thomas C. Yeotis+Δ
 Ms. Jayne Young*
 Mr. & Mrs. Dennis W. Younger
 Mr. & Mrs. Vincent Zamora+
 Ms. Trish M. Zito-Smith+Δ
 Mr. Paul Zoltowski

Family

(\$50 annually)
 Mr. & Mrs. Joseph Abbott
 Mr. & Mrs. Robert A. Ackerman+
 Ms. Marquita Adams
 Mr. & Mrs. Todd B. Adams
 Ms. Velma Adams
 Mr. & Mrs. Benjamin Adkins & Family
 Rex Alexander, Rochelle & Jillian Molyneaux
 Ms. Karen Alexander & Family
 Mrs. Kimberley J. Alexander+
 Mr. & Mrs. Ricardo Alfaro
 Mr. & Mrs. Luay Alkotob
 Clyde & Georgie Allard
 Mr. & Mrs. Fred Allen
 Mr. & Mrs. Jim Ananich
 Mrs. Debbie Anderson
 Ms. Wilma Anderson
 Mr. & Mrs. Willie J. Andrews
 Mr. Alfred Arnold & Mrs. Dolores M. Roat-Arnold*
 Mr. Christopher Arts
 Mrs. Joellen Arvoy
 Mrs. Mary Beth Atkinson*
 Dr. & Mrs. Patrick Atkinson
 Mr. & Mrs. Kenneth G. Aurand+
 Mr. & Mrs. Calvin Baker
 Mrs. Paulette S. Balasko Parker
 Mr. & Mrs. Thomas Ballard
 Mr. Ezra L. Barnes & Mrs. Linda L. Johnson-Barnes
 Mr. Jim Bass
 Mrs. Patricia Beauvais
 Mr. & Mrs. Nicholas Beedie
 Ms. Celestia Bell
 Ms. Stacy Betts
 Dr. & Mrs. Sultan M. Bhimani+

Ms. Edna R. Bick & Mr. John
Helsom*

Ms. Cindy Bierbusse
Mrs. Rosemary Bigelow
Mr. & Mrs. Harry J. Binder
Mr. & Mrs. Glen Birdsall+
Mr. Lee E. Black
Mr. & Mrs. Joe Blakely
Dr. & Mrs. Paul Blanchard
Mr. & Mrs. Jason Bledsoe
Charlie Boike
Mr. & Mrs. James Boles
Mrs. Joyce E. Bolo
Mr. & Mrs. Dean Bonesteel
Mr. & Mrs. Dennis BowlesΔ
Mrs. Patricia Boyd
Ms. Jennifer Boyer
Mr. & Mrs. David S. Boze
Mrs. Edith Bradley
Mr. & Mrs. Edwin Bradley+
Mr. & Prof. Thom Bradstreet
Ms. Christy Brasfield
Mr. & Mrs. John C. Briggs+
Mr. & Mrs. Kelly J. Brisbin
Ms. Gwendolyn Bronson
Ms. Carol Brooks
Mr. & Mrs. Michael J. Brooks+Δ
Ms. Betty Brown
Mr. & Mrs. Brian Brown
Dr. & Mrs. James Brown
Mr. & Mrs. Luther Brown
Ms. Gail R. Buckner-Odom
Mr. & Mrs. Scott A. Burdick
Ms. Connie Burgess
Ms. Estelle Burgett
Mr. & Mrs. Duane A. Burnash
Mr. & Mrs. Markos Buterakos
Mr. & Mrs. Weston Bye
Mr. & Mrs. Stan Byk
Ms. Lorrie Cabush
Mr. & Mrs. Daniel Cady+
Mr. & Mrs. Nick A. Calandro, Jr.
Ms. Ana M. Calderin+Δ
Ms. Janet Cameron+
Ms. Sharon D. Campbell
Ms. Melissa Casacchia
Mr. & Mrs. Gilbert Cass+
Mr. Terry Castor
Mr. & Mrs. Michael Chaffee+
Dr. & Mrs. Alexander Chan+Δ
Mrs. Aisha Changezi & Family
Mr. & Mrs. James Cheek
Mrs. Jennifer Chenett
Mr. & Mrs. James Cherry+
Mrs. Diana Cholakova
Mr. & Mrs. John M. Christena+
Mrs. Clara Christenson*
Jeff & Brooke Clothier
Rob & Kathy Cojeen+Δ
Ms. Sonja Coleman
Ms. Bethany Collins
Mr. & Mrs. Craig Coney
Ms. Belen Connelly
Mr. Gordon Cook
Mr. & Mrs. Allan Coon
Mr. Joseph Coriaty

Mr. & Mrs. Robert Courneya
Dr. & Mrs. Clifford J. Cox II
Mr. & Mrs. Fred Cross*+
Mrs. Paula Crossnoe
Mrs. Nancy J. Cunningham
Mr. & Mrs. Christopher Danko
Mr. & Mrs. Peter Daunt+Δ
Mrs. Judith L. Davidson
Mr. & Mrs. Delmar D. Davis+
Ms. Janis D. DeGroat
Mr. Albert Deloney
Ms. Elizabeth Dickens
Mrs. Cheri Dickinson
Mr. & Mrs. Donald C. Dillon
Mrs. Kathy Dinsler
Mrs. Elizabeth Dix+
Mrs. Elaine M. Dobrowolski
Ms. Jeanne Dodd & Mr. Robert
Streadwick+Δ
Mr. Gilbert E. Dorsey III
Ms. Jean Douglas & Family
Mr. Dennis Drenikowski
Mr. & Mrs. Kenneth Duetsch
Mr. & Mrs. John Dumas
Ms. Daina Dunn
Mr. Rick Dunning
Mr. & Mrs. Stephen Dyball
Mr. & Mrs. Robert Eastman
Mr. David Edwards
Mrs. Carol Egloff+Δ
Ms. Patricia Emenyonu
Ms. Bridget Ennis
Mr. Jim Erwin & Ms. Diane Root
David & Jill Esau
Mr. & Mrs. Christopher Estes
Ms. Rita Fagan & Family
Mr. & Mrs. George Farah, Jr.
Ms. Gisele Farah
Mr. Said Farah
Mr. & Mrs. Troy Farah
Mrs. Vera Farah
Mr. & Mrs. Michael V. Farella
Mr. & Mrs. Dane Farner
Letrice & Frankie Ferguson
Mr. & Mrs. Paul A. Fernandez
Mr. & Mrs. Albert Fialka
Mrs. Billie FisherΔ
Mr. & Mrs. Jeremy Fisher
Ms. Andrea Zlatec Floden+
Ms. Crystal Flynn
Mr. & Mrs. Michael B. Foote
Mr. Richard W. Fortner+Δ
Thomas & Diane Fraser
Ms. Susan C. Frey
Mr. & Mrs. Herbert A. Friesen+Δ
Ms. Gladys Gaines
Mr. & Mrs. Sylvester Gajewski
Mr. & Mrs. Paul Gallinat, Jr.
Ms. Maricela Garcia
Regional & Marla Garland
Mr. James Gaskin & Ms. Regina
Schreck
Mr. & Mrs. James Gaver
Ms. Pamela Gerald
Mr. & Mrs. Elie Ghattas
Mr. & Mrs. Roger Gilmour+

Ms. Grace Glass
Douglas & Susan Goering+
Ms. Donna Gohs & Family
Ms. Ronda W. Goldfarb
Mr. & Mrs. Lawrence C. Goldman
Mr. & Mrs. Raymond Gorton
Ms. Estella L. Gould
Mr. & Mrs. Matthew A. Grady
Mr. & Mrs. Gorden Grandy*+
Ms. Stephanie Graul
Ms. Annette Gray
Mr. & Mrs. Kent Greenfelder
Mr. Walter P. Griffin
Mr. & Mrs. Greg Gromek*
Mr. & Mrs. Timothy Gundlach+Δ
Ms. Marget Gusumano
Sister Mary Gutoski
Mr. John M. Hackett & Ms. Christy
A. Walker-Hackett
Mr. & Mrs. Lawrence Hackett
Mr. & Mrs. John Hagens
Ms. Nancy Hagle-DuffyΔ
Ms. Vikki Bayeh Haley
Ms. Cathi Hall
Mrs. Sarah Hall & Family
Mr. & Mrs. James Hallem*
Mr. James Hallemann*
Dr. & Mrs. Nick Hamers
Dr. & Mrs. Franklin W. HamiltonΔ
Dr. Christine Hanczaryk
Mr. & Mrs. Carl Hansen+
Ms. Dajuana Harden
Mr. Trevor Hardin
Mrs. Sarah E. Harper
Mr. & Mrs. Tony Harper
Mr. Jonathan Hartman
Mr. & Mrs. Brad Hartzell+Δ
Greg, Laura & Karen M. Havrilcsak
Mr. & Mrs. Carl S. Hawkins
Mr. Jarret Haynes
Mr. & Mrs. John Hebert
Mr. Paul Hebert
Mr. & Mrs. Kenneth R. Henley
Mr. & Mrs. Terry Henry+
Mr. & Mrs. Arthur S. Hesse, Jr.+
Mr. & Mrs. Ron Hessling & Family
Ms. Maxine Hill
Ms. Sarah Hilton-Watson
Mr. & Mrs. Alan Himelhoch
Mr. & Mrs. Jeffrey J. Himelhoch
Ms. Louann Hinton
Dr. & Mrs. Huseyin R. Hiziroglu+Δ
Ms. Brandy, Steve, Morgan &
Shelby Hodge
Mr. & Mrs. Michael Holloway
Ms. Linda Hopkins
Mrs. Valorie Hoppe
Ms. Thressa N. Horton
Ms. Valorie Horton
Mr. & Mrs. James Hotary+
Mr. & Mrs. Robert Houbeck
Ms. Ann Howard
Mr. & Mrs. Al Huebel & Family
Bridget & George Hughes*
Mrs. Almeda B. Hunter
Mr. Josh Hurand

Ms. Sara Hurand & Mr. Elie Weiss
Peter & Gail Hutchison
Mr. & Mrs. Robert E. Iden
Judith M. & Robert J. Irwin IIΔ
Mr. & Mrs. Andrew Isola+
Mr. & Mrs. Steven A. Jadwin*+
Ms. Stephanie James
Ms. Ashley Johnson
Ms. Jimmye Johnson
Mr. & Mrs. Tim Johnson
Mr. & Mrs. Jeff JohnstonΔ
Mr. Derrick F. Jones
Ms. Kathleen Jones
Mr. & Mrs. Myrton N. Jones
Mr. Sam Jones & Dr. Beverly Jones
Mr. & Mrs. Jeff Jordan
Mrs. Carolyn Joseph
Ms. Grai JosephΔ
Mrs. Laura Karle & Miss Madeline
Karle+
Mr. & Mrs. Franklin H. Kasle
Mrs. Katie Keene & Ms. Kourtney
Freese
Ms. Tonya Keener
Ms. Bethany Klein
Mr. & Mrs. Timothy H. Knecht*+
Mr. & Mrs. Robert Koch
Mr. & Mrs. Rudolph N. Kohn
David & Tracy Koscinski
Ms. Rosemary A. Kowalske
Ms. Brandy Krapohl
Mr. Kenneth C. Kreger &
Mr. Timothy M. Morgan+
Mr. Tracy Krumm
Mrs. Mechelle Kuchar
Mr. & Mrs. Paul LaClair
Mr. & Mrs. Wade Laine
Mrs. Lisa M. Lamb+
Ms. Lisa M. Land & Ms. Pam Folts*
Mr. & Mrs. Robert Landaal
Mr. & Mrs. Shannon Langley
Ms. Mary Larson & Mr. Dan Cole
Ms. Sandra Law*
Mr. & Mrs. Terry Learmont
Dr. Jori Lewis & Mr. Andy Lewis
Ms. Ashley Liddell-Ruffin
Ms. Billie Lindo & Mr. Solomon
Yearby
Dr. & Mrs. Edward T. Lock
Ms. Janet L. Lorch
Mr. Vince Lorraine
Tiffany & Bob Lovett
Ms. Claudia Ludvigsen*
Mr. & Mrs. Fred Luten
Mr. J. Brian MacDonald
Mr. & Mrs. Keith Magnuson*
Mr. & Mrs. Eric Majied
Fr. Steve Makranyi+Δ
Ms. Adrianna Marks
Mrs. Susan Marr
Ms. Lucille M. Martel
Ms. Margaret A. Martin
Mr. & Mrs. Paul Martindale
Mrs. Lisa Masi & Family
Mr. & Mrs. Michael A. Mason+
Ms. Carol Masse+

Mr. Mark Masters
 Ms. Shelly Masters
 Ms. Michele Matther
 Mrs. Ann Mau
 Mrs. Melissa Maxwell- Cook & Mr. Lonnie Maxwell-Cook
 Mr. & Mrs. David McAuliffe
 Dr. & Mrs. Gordon McClimans
 Mr. Jeff McClintock*
 Mr. & Mrs. Sean McCormick*+
 Mrs. Elizabeth McCreedy
 Ms. Elizabeth McDaniel
 Mr. & Mrs. Larry McDonough+Δ
 Mr. Keith McGrady
 Ms. Gwyn B. McKay*
 Mr. & Mrs. Charles R. McKone*+
 Ms. Sonya Meggs
 Mrs. Sarah Mellish & Family
 Ms. Wanda Merrell & Mr. Harry Garrison
 Mr. & Mrs. Phil Merrill+
 Mrs. Beatrice A. Messmore
 Mr. & Mrs. James Migan
 Mr. & Mrs. James Mikulski
 Ms. Rachel J. Miller*
 Mr. Stephen Miller & Ms. Jeana Rossie-Miller
 Mr. Jeff Mills
 Ms. Juliet Minard & Mr. Scott Stensaas+
 Mr. & Mrs. Robert J. Miner*
 Mr. & Mrs. Robert Minier
 Mr. & Mrs. John Mira & Family
 Kelly & Teri Mitchell Family
 MLive Media Group
 Dr. & Mrs. Behrouz Moghtassed
 Mr. & Mrs. Andrew Molnar
 Mr. Jim Mongrain
 Mr. & Mrs. James Moore
 Ms. Kerry Moore
 Mr. & Mrs. Steward A. Moore+Δ
 Mr. & Mrs. Matthew Morgan
 Mr. Fred Morley
 Mr. Denver Morris & Ms. Diane L. Boegner+
 Ms. Gwenda Motley
 Mr. John J. Mrozik & Ms. Heather Sisto
 John & Pat MuchaΔ
 Mrs. Tonya K. Muhammad
 Ms. Sandra L. Murphy
 Mr. Patrick Murray & Mr. James Edwards
 Mrs. Wenona Napolitano
 Mr. & Mrs. George Nassif
 Mr. & Mrs. Denis NeumannΔ
 Mr. & Mrs. Jacob Newcomb
 Ms. Julia Newcomb
 Ms. Andretta Newton
 Mr. & Mrs. Charles D. Nielsen+
 Mr. & Mrs. Jonathan Nigrine & Family
 Mr. & Mrs. Richard C. Noble
 Mr. Thomas W. Nobles+Δ
 Mrs. Kathleen Nordrum
 Mr. & Mrs. Matthew Norwood

Mr. & Mrs. Travis Nuffer
 Mr. & Mrs. David O'Lear
 Ms. San Juana Olivares
 Mr. Isaiah Oliver
 Mr. Karl Olmsted
 Ms. Lizbeth Orr
 Ms. Jacquie Osborn*
 Ms. Karen P. Osborne
 Ms. Jeanne Overweg
 Mr. & Mrs. Tom R. Pabst
 Ms. Corinne C. Pacheco*
 Mr. Robert Palter
 Mr. Kevin Papenfus
 Mrs. Tammera Parillo & Family
 Ms. Alissa Parks+
 Mr. & Mrs. Tim Parrott
 Mr. & Mrs. John Pavlis
 Mrs. Rita M. Pearson
 Mr. John Pendell & Ms. Vickie Larsen*
 Ms. Andrea Perani
 Mr. Robert Perani
 Mr. & Mrs. Carl Peterson
 Ms. Kim Peterson
 Mr. & Mrs. Roger L. Peterson+
 Mr. & Mrs. David M. Pettengill+
 Mr. & Mrs. Jason Phillips
 Mr. Wayne Pickvet & Mr. Bruce A. Barrett
 Ms. Paula Pierson
 Ms. Donita Pikes*
 Mr. & Mrs. Stanley Podolsky
 Ms. Lori A. Popilek*+Δ
 Councilwoman Jackie Poplar
 George & Suzanne Popovich
 Ms. Mary Powell*+
 Mr. & Mrs. Mark Prescott
 Ms. Frances J. Price
 Ms. Marilyn Quigley+
 Ms. Jeanne Quinlan
 Dr. Paul J. Racine
 Mrs. Leslie Ragnone & Family*
 Dr. & Mrs. Ramotsumi Makhene
 Mr. & Mrs. Richard Randels
 Ms. Felicia Ray
 Mrs. Debi Raymond+
 Mr. & Mrs. Thomas Regimbal
 Mr. Curtis Remsing
 Dr. & Mrs. Lawrence Reynolds*+
 Ms. Stacy Reynolds
 Mr. & Mrs. John L. Riegle, Jr.
 Dr. & Mrs. Harvey Ring
 Mr. & Mrs. Stephen Riselay
 Mrs. Vanessa Robar
 Mr. & Mrs. Nicholas Robinson
 Mr. & Mrs. Robert T. Robison*
 Ms. Suzanne Rock & Mr. James Uicker
 Mr. Donald Rockwell
 Ms. Juliana Rodrigues
 Mrs. Janet Roelle
 Mr. Dan Roesner & Mrs. Sherri Stephens
 Dr. Brenda Rogers-Grays & Mr. Milton Grays
 Mr. & Mrs. Robert Romanowski+

Dr. Elizabeth A. Rose & Family
 Mr. & Mrs. Brian Royce*+
 Ms. Nancy Rozier
 Ms. Elizabeth Ruediger
 Mr. & Mrs. Richard J. Ruhala
 Mr. & Mrs. Walter Russ
 Mr. & Mrs. Kenneth L. Rutter
 Ms. Christine Samuelson
 Mr. & Mrs. Frank A. Sanders
 Mr. & Mrs. Marshall H. Sanders, Jr.+Δ
 Ms. Tracey Schaffer
 Mr. & Mrs. Florian Schattenmann & Family
 Dr. Kathryn Schellenberg
 Mrs. Arlene A. Schmitzer+
 Ms. Sue Schwartz
 Mr. & Mrs. Robert L. Segar
 Mrs. Martha Shaver
 Mrs. Patricia A. Sheehy
 Ms. Sharon Sheroski
 Dr. Richard & Rose Marie Shick*+
 Mr. & Mrs. Brent A. Shook
 Ms. Rita Short*
 Mr. Scott Siefker+Δ
 Mr. & Mrs. Marc Silver
 Drs. Justin & Kathleen Simmons
 Mr. Joshua Sinclair
 The Smith Family*
 Mr. & Mrs. Daniel Smith+
 Mrs. Germaine D. Smith
 Ms. Sherrie Smith
 Mr. & Mrs. Worley Smith*+
 Ms. Monica Snyder & Mr. Brendan Smith
 Mr. Roger Solomon
 Mr. & Mrs. William Somers
 Dr. & Mrs. Thomas Spademan+Δ
 Ms. Raynetta Speed
 Mr. & Mrs. Carl Spradlin & Family
 Mr. Michael Sprague & Dr. Janet Sprague
 Mr. & Mrs. Thomas Springer*+
 Mr. & Mrs. Jeff Stanton
 Mr. & Mrs. Jon Stavros & Family
 Mr. & Mrs. Al Steele
 Mr. Tyler Stephens
 Ms. Rene Stevens & Miss Alexis Stevens-Drake
 Mr. & Mrs. David Stickle*
 Mr. & Mrs. Scott Stinson*
 Mr. & Mrs. Phillip Stoinski & Family
 Ms. Sondra Stoltenberg
 Mr. Matthew Story & Mr. Quin Olsen
 Ms. Cathy Streby
 Mr. & Mrs. Anthony Strump
 Mr. & Mrs. Hans Stuhldreer
 Mr. & Mrs. William Sumner
 Ms. Tamar Swain & Ms. Quinasha Pleasant
 Mr. & Mrs. Douglas C. Swanson
 Mr. & Mrs. Jon Talarico
 Mr. & Mrs. Tarakji & Family
 Mr. & Mrs. David Taylor

Mrs. Holli Taylor & Family
 Mr. & Mrs. Richard Tesner
 Mrs. Vonda Thelen
 Ms. Diane Thompson
 Mr. & Mrs. Robert Timyan
 Mr. & Mrs. Kevin Tompkins*
 Mr. & Mrs. Paul N. Torre*
 Mr. James Toth
 Mrs. Mary Ann Tremaine
 Mr. & Mrs. Bruce Trevithick+
 Ms. Meagan A. Turner
 Mr. Connor Ulbright & Mr. Braylin Ulbright
 Mrs. Jeannine Upton
 Ms. Carol Van Buren
 Dr. & Mrs. L. VanWinkle, Jr.
 Ms. Jaquelin L. Vargas
 Ms. Murielle Vich
 Mr. & Mrs. Ty Waggoner
 Ms. Judy Walker
 Mr. & Mrs. William Walker
 Mr. & Mrs. Frederick Waller
 Ms. Patricia Waller
 Mr. & Mrs. John Walter & Family
 Mr. & Mrs. Clair Ward
 Ms. Lahna Ward
 Mr. & Mrs. Edward Watkins
 Mr. Christopher B. Watson
 Drs. Wrex & Karen Weaver
 Mrs. Susan M. Wedda & Ms. Carol J. Ferguson+
 Ms. Angela Wesch
 Mr. & Mrs. David Withey+
 Mr. Theron Wiggins
 Ms. Martha A. Wiley
 Mr. Christopher Wilhelm
 Mr. & Mrs. Kent C. Williams
 Michael & Wendy Willihnganz
 Ms. Ruth Winter & Mr. Tom Thibault+
 Mr. & Mrs. Alan Wood
 Ms. Diane Woodruff
 Mr. Harold E. Woodson
 Ms. Ja-noon Wooten
 Mr. & Mrs. Daniel Wozniak+
 Mr. Matt Wyneken+
 Dr. K.D. Yarber
 Mrs. Flora Yeartan
 Ms. Laurie Younglove
 Ms. Scarlett Younglove
 Dr. Kerry Zubke

Dual
 (\$40 annually)
 Mr. William V. Abendschien & Mrs. Mary Ann Sullivan-Abendschein+
 Ms. Kay Adams*+
 Tashween & Tanveer Ali*
 Ms. Lynn K. Allen & Mr. Robert Cox+
 Mr. & Mrs. Marvin L. AllenΔ
 Ms. Marilyn M. Alvey*Δ
 Mr. Tom Amie & Ms. Pennie A. Meyers+
 Mrs. Sarah Andresen & Ms. Catherine Andresen+Δ

Mr. & Mrs. Robert Applegate+Δ
Mr. & Mrs. Edward P. Arends
Mr. Andrew Armstrong
Mr. & Mrs. Robert K. Armstrong
Mr. & Mrs. Ezra R. Artis, Sr.
Mr. & Mrs. Robert Aurand
Mr. & Mrs. David G. Babieracki+
Mr. John Bach & Ms. Mary Alice O'Malley+
Mr. & Mrs. John Baker
Mr. & Mrs. Chris Balog+
Mr. Wayne Barber & Mr. Rich Fitz
Mr. Richard Barber & Ms. Sharon Baker
Mr. & Mrs. Kirk Barkel
Gary & Maureen Bates+
Mr. & Mrs. Anthony Beavers
Mr. & Mrs. Nick Beccia
Dr. & Mrs. Henry Beckmeyer+
Dr. & Mrs. Tom & Linda Belford
Mr. & Mrs. Donald L. Bell
Mr. & Mrs. Martin Bernstein
Ms. Deirdra Bezemek & Mr. Daniel Rodriguez
Ms. Kathleen Bishop
Mr. & Mrs. Gerald Bluteau*
Mr. & Mrs. Devere Bobier*
Mr. & Mrs. Thom Bohnert+
Mr. & Mrs. Larry Bowron
Ms. Betsy Boyd
Mr. & Mrs. John Bracey
Mr. & Mrs. John Bradley
Mr. & Mrs. John A. Brancheau
Mr. & Mrs. Carl Brandt+
Mr. & Mrs. Waldo Bronson
Rev. & Mrs. Kendall H. Brown
Mr. & Mrs. Carl BrownΔ
Mr. & Ms. Robert Brown
Ms. Pat Buerkel & Ms. Tammy Williams+Δ
Mr. & Mrs. Norman E. Bullock
Mr. & Mrs. Samuel BurdickΔ
Kearby & Jan Burgess
Mr. & Mrs. Lary Burk
Mr. & Mrs. Michael Burkley+
Mr. & Mrs. Richard J. Caloia
Dr. Stephanie Carpenter+
Robert & Phyllis Carter
Mr. Wade Carver & Ms. Heather Meier+
Mr. & Ms. Gary Casey+
Mr. & Mrs. Tom Cheek+
Mr. John D. Cherry & Ms. Teresa Villacortez
Mr. & Mrs. Mark Cherry+
Mr. & Mrs. Lee E. Chillik
Mr. James R. Chintyan+
Mr. & Mrs. Elwood Chipman+
Mr. & Mrs. Phil Christensen
Ms. Bonnie Cleffman & Mrs. Hazel Cleffman
Mr. & Mrs. John Clothier
Mr. & Mrs. David Coburn+
Ms. Rachel Coffey
Mr. & Mrs. Bruce T. Colasanti
Mr. & Mrs. Sylvester Collins+
Mr. & Mrs. Michael E. Cooney*
Virgil & Sheryl Cope+
Mr. & Mrs. Mark Corrigan+
Mr. & Mrs. William Courneya+
Mr. & Mrs. Gary Cox
Mr. & Mrs. William Cox+
Mr. & Mrs. John H. Crawford+
Mr. & Mrs. David Curtis
Mr. Robert L. Daly
Mrs. Eva J. Daniel & Ms. Adina Peterson
Mr. & Mrs. Robert L. Darley*
Mr. & Mrs. Skip Davis
Mr. & Mrs. Stu Davis
C. Debusschere
Mr. & Mrs. Larry L. Deitering
Ms. Claudia DeMonte & Mr. Ed McGowin
Ms. Rita Mary DesArmier+
Mr. & Mrs. John Dewit+Δ
Mr. & Mrs. Norm Dickenson
Mrs. Carol Dickinson*
Mr. & Mrs. Bruce Dobras
Mr. Dallas Dort & Mrs. Sharon A. Peterson Dort*
Mr. Ron Dutro*+
Mr. & Mrs. Paul Easter
Mr. & Mrs. Harvey Eisman
Mr. & Mrs. Larry Elliott
Mr. & Mrs. Travis Emmons
Dr. Jim English & Ms. Jane Hudson
Ms. Barbara A. Evans*+
Mr. & Mrs. Vince Ferreri+
Mr. Thomas M. Firestone
Mr. Michael Fives+
Mr. & Mrs. William Flanigan
Mr. Leroy Flint & Ms. Frederica E. Muller
Mr. & Mrs. Richard Foor+
Mr. & Mrs. James P. Ford+
Dr. & Mrs. Michael R. FrappierΔ
Mr. Brandon Frost
Mrs. Marjorie N. Fulton
Mr. Richard Gaffield
Mr. & Mrs. John Gembinski
Ms. Tracee Glab*+
Ms. Christine Gleason & Mr. Jim Zembo
Mr. & Mrs. Victor Gleason
Dr. Debra A. Golden-Steinman & Mr. Harold V. Steinman+Δ
Mr. & Mrs. Johannes Gorke
Mrs. Elaine M. Graves
Mr. & Mrs. Robert Gremel
Mr. & Mrs. Mark Guith
Mr. & Mrs. Tony Hain
Mr. Fred Hall & Ms. Mary Boyer+
Mr. & Mrs. Anthony A. Hanak+Δ
Mr. & Mrs. Charles Handley
Mr. & Mrs. Henry M. Hanflik*+
Mark & Rebecca Hanner
Mr. & Mrs. Donald E. Harbin+
Mrs. Wanda Harden & Ms. Carla Harden
Mr. & Mrs. R.J. Harmon
David & Donna Hart+
Ms. Kathleen Hehn
Mr. & Mrs. Edward G. Henneke+
Mr. & Mrs. Robert Henshaw
Mr. & Mrs. Theodore S. Himelhoch
Mr. & Mrs. Craig Hinshaw
Mr. & Mrs. Michael HintermanΔ
Mrs. Mary Jo Hobart-Parks
Mrs. Joan M. Horcha & Mr. Jerry J. Haddad
Mr. & Ms. Mark Horton
Mr. & Mrs. Ronald M. Horton+Δ
Ms. Judith I. Ingram & Ms. JoAnne Ingram+Δ
Ms. Brittney Jackson
Mr. & Mrs. Mitchell Jarosz+
Mr. & Mrs. Earl D. Johnson
Ms. Jacqueline Johnson*
Mr. Kenneth Johnson & Mrs. Sheila Kelly
Mr. & Mrs. Scott C. Johnson+Δ
Dr. David M. Johnston+
Mr. & Mrs. Fred Junger
Mr. & Mrs. William A. Karas II
Mr. Dale Keipert+Δ
Aaron & Emily Kelley+Δ
Mr. James Kelly & Mrs. Mary Kay Thompson-Kelly+
Mr. & Mrs. Robert Kilbourn
Mr. Dan Kitson
Ms. Marsha Kloor & Ms. Kate Kloor
Mrs. Diana M. Koviack
Ms. Charlene A. Kowalski*
Mr. & Mrs. Michael Kryza
Mr. & Mrs. Thomas Kudza
Mr. & Mrs. Madhu Kulkarni
Dr. & Mrs. Paul LafaΔ
Mr. & Mrs. Michael Larson
Mr. & Mrs. Gary Latimore+
Mr. & Mrs. Mike Laux
Mr. & Mrs. Lee LaVictoire+
Mr. & Mrs. David Lawson+
Mr. & Mrs. Gordon Lawson
Ms. Susanne J. Les & Mr. Tim Green+
Ms. Jennifer Lesh
Ms. Rebecca Letterman & Ms. Sarah LettermanΔ
Mr. & Mrs. Larry Lifshitz
Mr. & Mrs. George I. Liljebblad
Mr. David T. Lindsey & Mrs. Jeanette Lindsey+
Ms. Jacquelyn Lloyd & Mr. Stephen Horan
Mr. & Mrs. John LoedingΔ
Mr. & Mrs. James A. Loviscek*
Mr. & Mrs. Steven Low+
Ms. Mona Lundberg
Mr. & Mrs. Richard Lutgens+
Ms. Katherine Maitland*
Ms. Sandy Malnar
Mr. & Mrs. Daniel J. Mancillas*
Ms. Patricia Manzo & Mr. James Vincent
Ms. Alon Marie & Mr. William Coulter
Mr. & Mrs. Andrew Markell
Ms. Alice Martin & Ms. Jennifer Lince
Mr. & Mrs. Charles Martin+
Mr. & Mrs. Thomas D. Martin
Mr. & Mrs. Daniel Maynard+
Ms. Sheri McDonnell
Mr. & Mrs. James McDougal
Dr. & Mrs. Jack McGaugh
Ms. Doris McGuffin
Mr. Roger McGuffin
Mr. & Mrs. Scott McKay
Mr. Raymond A. McKee & Ms. Shirley Eason
Mr. & Mrs. Peter McKenna
Mr. & Mrs. Joseph McLearn
Mr. & Mrs. Neil McPhee
Mr. & Mrs. Robert Meadows
Mr. & Mrs. Jim Mikuska
Mr. & Mrs. Kenneth Milito
Mr. & Mrs. Jim Miller
Mr. & Mrs. Robert J. Miner+
Mr. & Mrs. John Moliassa
Mr. & Mrs. Paul Mooradian
Hon. & Mrs. Eugene A. Moore
Dr. & Mrs. Stephen Morris
Mr. & Mrs. Michael Munger
Mr. Richard Munoz
Mr. & Mrs. Rick Murphy
Ms. Paula NardeΔ
Mr. & Mrs. James Olson
Ms. Donna Organek
Mr. & Mrs. Michael Oshust
Mr. & Mrs. Ronald Oskey
Mr. & Mrs. Matthew Osmon
Mrs. Lynne Parlborg
Mr. & Mrs. Kevin Payne+
Ms. Bethany Peterson+
Ms. Nora Petriches & Ms. Lisann Petriches
Mr. & Mrs. Randall Petrides
Mr. Douglas Petroni & Ms. Rosalie Buss-Petroni+
Ms. Kelley Petroskey
Mr. Tim Petrowski
Mr. & Mrs. Gary Philpott
Mr. & Mrs. Thomas G. Pierson
Mr. & Mrs. Nick Pobocik
Mr. & Mrs. Stanley Podolsky*
Mr. & Mrs. Edward J. Preville+Δ
Mr. & Mrs. Robert J. Pries
Mr. Thomas Pugsley & Ms. Susan Sage
Mr. & Mrs. Donald Pumphrey*+
Mr. Timothy PurmanΔ
Mr. & Mrs. William Pyles+
Mr. & Mrs. Robert W. Ranta+
Richard & Ramona Ranville
Ms. Evelyn Raskin & Mr. James Hilty
Ms. Carol Raznik
Dr. & Mrs. N. N. ReddyΔ
Mr. & Mrs. Richard Reed+
Mr. & Mrs. Brian Renaud
Mr. & Mrs. Melvyn R. Rettenmund
Ms. Ann Richards+

Ms. Edith A. Robbins &
 Ms. Anthony Robbins+Δ
 Frank & Linda Roberts+Δ
 Mrs. Cheryl A. Rogers & Mr. David
 Rogers+Δ
 Mr. & Mrs. Alan Rohde
 Mr. & Mrs. Barry Rosen
 Ms. Heather Rousseau & Mr. Mark
 Silva
 Mr. & Mrs. Paul Rozycki+Δ
 Mr. & Mrs. Nathaniel Ruth
 Mr. & Mrs. Michael Rutherford*+
 Mr. & Mrs. Clinton Sampson
 Mr. Randle Samuels & Ms. Gail
 Offen-Samuels+
 Ms. Linda M. Savage & Mr. Michael
 P. Sherry
 Dr. & Mrs. Nelson Schafer
 Mr. & Mrs. Patrick Shanahan
 Miss Claudia Scheuer*
 Mrs. Maureen E. Schlott
 Ms. Karla Schmid & Ms. Amelia
 Schmid
 Dr. & Mrs. Gerald Schneberger
 Mrs. Trudi Schreiber+
 Ms. Janice Scott
 Mr. & Mrs. Tim Seaman*
 Mr. Paul Sears
 Dr. & Mrs. David Sergy
 Ms. Kathleen A. Sheehy*
 Mr. & Mrs. Jason Shellhaas
 Ms. Patrice Stiehl*
 Mr. & Mrs. Gerald T. Smith
 Mr. Larry Sprouse & Ms. Marian
 Zinyk
 Ms. Linda Steibel & Mr. Ken
 Steibel*
 Mr. & Mrs. Norm Stewart
 Mr. & Mrs. David Stickel
 Mr. & Mrs. Ron Stier
 Mr. Gale A. Still & Ms. Sarah Still*
 Mr. & Mrs. Edward Strong
 Ms. Suzanne Sugden*+
 Dr. & Mrs. John Sullivan+
 Mrs. Sarah Swartz
 Mr. Ken Swisher
 Ms. Phyllis Sykes+
 Mrs. Matilda Szaroletta &
 Mr. Howard Szaroletta
 Mr. Brad Tankersley
 Mr. Bruce Taylor
 Ms. Jeanne C. Thick & Mr. John
 Nelson*+
 Mr. & Mrs. Thomas Thompson
 Nickolena & Steven Topping
 George & Jean Toth+
 Mr. & Mrs. Robert Tucker
 Mr. & Mrs. Robert Vale+
 Mr. & Mrs. Daniel Van Norman
 Mr. & Mrs. Paul Vanston
 Ms. Regina Vining
 Rev. Tom & Mrs. Beth
 Wachterhauser+
 Mr. & Mrs. Mark Wagner
 Mr. & Mrs. Donald Walker
 Mr. Neil Walker

Mr. & Mrs. Gerald L. Walters
 Mr. Michael P. Watchowski+
 Dr. Mariann Watson & Mr. Thomas
 Shanahan
 Mr. Gary D. Weichner*Δ
 Mr. & Mrs. Mark White+Δ
 Mr. & Mrs. William White*
 Mr. & Mrs. Allan R. Wilhelm+Δ
 Mrs. Beverly A. Willing
 Mr. & Mrs. Mike Wilson+Δ
 Mr. & Mrs. Brad Winther
 Dr. Sue Wisenberg & Ms. Donna
 BakerΔ
 Mr. & Mrs. John WishartΔ
 Ms. Yedan Yin & Mr. Shane Trese
 Mr. & Mrs. Rick Yuille*

Individual

(\$30 annually)
 Ms. Julie A. Adams+
 Ms. Pegge Adams
 Ms. Anita AhearnΔ
 Ms. Denise Ahonen
 Mrs. Nancy Alacheff
 Mrs. Susan Alarie
 Mrs. Laura Alderman
 Ms. Judith Alexander+
 Ms. Margaret Allen
 Ms. Anna Allison*+
 Mrs. Emily Alter
 Mrs. Joanne Anderson
 Ms. Mary Andrews
 Ms. Debbie Angell
 Mrs. Lois S. Appel
 Dr. Jason Arant
 Ms. Jan Marie Arbor+
 Mr. John ArchangeliΔ
 Mrs. Peggy Arnes
 Ms. Peggy Arnold
 Ms. Aderemi Artis
 Mr. Ronald Artis
 Ms. Frances L. Ascencio+
 Ms. Lorraine Austin
 Mrs. JoAnn Bachelder
 Ms. Mary Bajcz
 Mr. Benjamin Balkum
 Ms. Lisa Ballard
 Ms. Elaine Balok
 Mrs. Carmen M. Bammert
 Ms. Shirley Bannatyne
 Mrs. Barbara Barrell
 Ms. Ida B. Barron
 Ms. Shirley Batterman
 Mrs. Linda Bedtelyon
 Mrs. Doris Beebe
 Ms. Dawn M. Bentley*+Δ
 Ms. Linda Bjaland
 Ms. Shirley I. Blair
 Mr. John Blankenship
 Ms. Kimberly A. Bodette
 Mr. Daryl Bond
 Mr. Andrew Borromey
 Ms. Michelle A. Bowman
 Ms. Mary Ann Boyd
 Mrs. Doris E. Brandt
 Mrs. Kathleen Brandt
 Mrs. Doris Bravender

Miss Jeanette Brayan
 Ms. Cheryl Braysher+
 Mrs. Carole A. Brender+
 Ms. Marianne Brender
 Mr. Benjamin Brock+
 Mrs. Sharon Brock
 Ms. Eileen Brooker
 Miss Dorothy M. Broomfield
 Ms. Ellen Brothers
 Mrs. Bonnie Brown
 Ms. Kimberly Brown+
 Mrs. Linda L. Brown
 Ms. Stephanie Brown
 Ms. Peggy Brunner+
 Ms. Lorraine Brush
 Ms. Judith A. Buffenbarger+
 Ms. Mary Burdis
 Ms. Tamera Burgess+
 Ms. Cindy Burns
 Mrs. Ruby Jean Butler
 Dr. Jon S. Buxton
 Ms. Martha Calhoun
 Mrs. Beverly Calkins
 Ms. Lois Callan+
 Ms. Diana Callison+
 Mr. Paul Canjar
 Mrs. Kathleen L. Cantley
 Miss Gloria Care
 Dr. Judith Carlisle
 Mrs. Diana Carr
 Ms. Sally Case
 Kathleen S. Cauley
 Ms. Donna ChampagneΔ
 Ms. Sarah Christensen
 Ms. Mary L. Christian
 Mrs. Avis Christie+Δ
 Mr. Justin Clanton
 Mrs. Jeanne ClarkΔ
 Mr. Joshua Clark
 Ms. Sandy Cleomaude
 Miss Anne Cole
 Ms. Shelby Coleman
 Mrs. Bernadette Collie
 Ms. Tracy Collier-Nix*
 Mrs. Nikola Conklin
 Dr. Christina R. Consiglio+Δ
 Ms. Carol L. Cook
 Ms. Sharon Cooper+Δ
 Mrs. Susan Cooper
 Mr. Joel D. Corner
 Mrs. Debra L. Costello
 Rev. Mary B. CovingtonΔ
 Mrs. Karen Crandell+
 Mr. Gale CrooksΔ
 Ms. Chrysa Curran-Cronley
 Ms. Gail M. Curry
 Mr. Robert H. Curtis
 Mr. Edwin D. Custer
 Mrs. Anne L. Davis
 Ms. Judy Dawson+
 Mrs. Elaine DeCou
 Ms. Marian DeCourval
 Ms. Betty L. Dell
 Mrs. Chris DeLooze
 Miss Vanessa Dendy
 Ms. Monique Desormeau

Mrs. Deborah DeVault
 Ms. Shelia Dirrim+
 Ms. Kathleen Dockter+
 Dr. Deb Doherty
 Mrs. Benjamin Brock+
 Ms. Joan E. Dowler+
 Ms. Mary Downey+
 Mr. James H. Drummond+
 Ms. Laurie Duengel
 Ms. Beverly Dunlap
 Mr. Dennis Dunlavy
 Ms. Kathleen DuvalΔ
 Ms. Michelle J. Dvorak
 Mr. William Dwyer
 Mrs. Brenda Eisele
 Mrs. Selma L. EisnerΔ
 Ms. Marcia L. Elbert+
 Ms. Erin Elliott
 Mrs. Lynn Elliott+
 Ms. Eileen Ellis
 Mrs. Holly Elrod
 Mrs. Rosemary Emerton
 Mr. George Ensinger
 Ms. Ida L. Epstein+
 Ms. Geraldine Erwin
 Ms. Patricia A. Falerios
 Ms. Gisele Farah*
 Judge Joseph J. Farah
 Mr. William Farmer
 Ms. Mary S. Felix+
 Mrs. Sally Ferguson
 Ms. Marianna Fiedor
 Ms. Elaine Flore
 Dr. Colleen Ford
 Ms. Julie Ford
 Mr. Daniel ForgerΔ
 Mr. Jeffrey P. Foutz
 Ms. Kim Fracalossi
 Ms. Amy Freeman-Rosa+
 Ms. Joyce M. Gadola+
 Ms. Virginia Gaffney+
 Mr. Devon Gagliardi
 Mr. Ken Galvas
 Mrs. Barbara K. Gamache+Δ
 Mrs. Elizabeth Gardiner+Δ
 Ms. Amy Gardner
 Mr. Jeff Garrett
 Ms. Patricia Gebhardt
 Ms. Judi Generous+
 Mrs. Alicia Geromel
 Ms. Sylvia Ghainer
 Ms. Lee Giacalone
 Ms. Charlotte Gibson
 Mr. Alex Gilford
 Mr. John A. Giolitti
 Ms. Nancy C. Goff+
 Ms. Jeanna Gooch
 Ms. Kerri Goodman
 Ms. Diane M Granger
 Mrs. Robert A. Green
 Mrs. Elizabeth B. Gregory
 Mr. Donald Griffin
 Mr. Joseph Griffin
 Msgr. Richard Groshek
 Ms. Mary L. Grossklaus+
 Ms. Jenny Guarins

Mrs. Joseph Guerin
Ms. Annie Guevara+
Ms. Regan Guevara+
Ms. Catherine Gwizdz
Ms. Sandra L. Haldy
Mr. Thomas M. Haley
Ms. June Hall
Ms. Cathryn Hallisy
Ms. Angela Hamilton
Mrs. Donna Dodds Hamm+Δ
Ms. Laura Hammond
Dr. Charles D. Hanson
Ms. Peggy Harbaugh
Mr. Patrick Hardin+
Ms. Susan Hardisty
Ms. Jennifer Harris
Mrs. Sharon Harris
Mr. James L. Harrow+
Ms. Delores Harrower
Ms. Lois Hartranft+
Ms. Courtney Hatcher
Ms. Jaclyn Hatcher
Ms. Michelle Hathaway
Ms. JoAnne Hatto+
Mr. Paul F. Hauth
Mrs. Danielle Hawkins
Mrs. Nancy R. Hawley+Δ
Mrs. Barbara G. Hayes
Ms. Amanda Hays
Ms. Carole D. Hecker
Ms. Anne M. Heidel
Ms. Lindsey Heine
Ms. Susan E. Hendrickson
Ms. Trudy Herriman
Ms. Shelley Hershberger
Mrs. Lisa Hetherington
Ms. Carol Higgins
Ms. Bonnie Hill
Ms. Elizabeth Hill
Mr. John J. Hill
Ms. Melissa S. Hill+
Mr. Ramon Hill
Mr. Jacob Hillker
Ms. Donna Hines
Mrs. Gloria A. Hines
Mr. & Mrs. Robert J. Hockin
Ms. Ann L. Hodges
Ms. Dora Hoelscher
Ms. Sandy Hofacker+
Ms. Leni Hoffman
Ms. Ernestine Holmes+
Mr. Keith F. Holt
Ms. Betsy Homsher+Δ
Mrs. Lola J. Hopcraft
Mr. Sidney Horton Jr.
Mrs. Alma Hourvitz
Ms. Carol Houser
Ms. Judith Hovey
Mr. Larry D. Howell
Dr. John A. Howland
Ms. Helen R. Hoyt+Δ
Mrs. Susan Hungerford
Miss Sandra Hutchinson
Mr. George K. Icke
Ms. JoAnne Ingram+Δ
Ms. Junesma Ireland

Mrs. Patricia Isenberg
Mr. Steven Izzo+
Mrs. Joyce Jack-Hughes
Ms. Heather Jackson+
Ms. Phyllis R. Jackson
Ms. Vickie Jackson
Miss Esther M. Jacob+
Mrs. Jackie Jakeway+
Ms. Sarah Jarrett
Mrs. Linda Jaworski
Mrs. Rita MacGregor Jeric
Mr. Robert V. Jewell
Ms. Patricia Johns+
Mrs. Elaine Johnson
Ms. Judy Johnson
Mr. Richard G. Johnson+
Mr. Richard Johnston
Ms. Janet Jones
Dr. C. M. Joseph
Mr. Noble Joseph
Mrs. Geraldine Joyner
Ms. Mary Kachman
Ms. Zuzana S. Kaplanova
Ms. Adele E. Karas+Δ
Mr. Paul Karr+
Kay Keelor
Ms. Susan Kelly
Ms. Brenda Kendall+Δ
Mr. John Kerr
Mrs. Rachel Kerr
Ms. Diana King
Ms. Carroll Kinkade
Mrs. Nancy Kirby
Ms. Georgia Kitchen
Mr. Stephen Kober
Ms. Camille Koger*
Ms. Katherine Korach
Ms. Valencia Kostiteyna
Mr. Timothy Kranz
Mr. Lawrence F. Kratz
Ms. Jane A. Kravetz
Miss Sheryl Kreiner
Mr. Ron Krueger, Jr.
Ms. Trudy Krueger
Mr. Mark Kulig
Ms. Ruth Kunka
Mrs. Elizabeth Kupsis
Ms. Sandra Kusza
Mrs. Marie F. Labbe
Ms. Lily LaFollette
Mr. Lawrence LaFountain
Ms. Natalia LaFuente
Mr. Miles Lam
Mr. Luis Lanas
Mrs. Doris Y. Landen
Mrs. Spencer Kelly Lanyi+Δ
Mr. Brent K. LaPonsey*
Mrs. Marjorie J. Larsen+
Ms. Patty Larson
Ms. JoEllen Larzelere
Mr. Steven Lasota
Ms. Dorothy Latchana
Ms. Sarah Lathangue
Ms. Nancy LaVigne
Ms. Sheena Law
Ms. Betty Leavitt+

Ms. Andrea LeGendre
Mrs. Janie Legleitner
Ms. Marie Lemere
Ms. Jacqueline Leow
Mrs. Linda Lewellyn
Mrs. Suzanne LewisΔ
Ms. Trish Lewis
Mr. Allen Li
Ms. Kathy Liggett
Mrs. Rebecca Lingaur
Ms. Dana Linker
Mr. Tom Lipinski
Ms. Teresa A. Littlejohn+
Ms. Donna M. Lloyd
Ms. Sue Lockard
Ms. Lynn Lorencz
Ms. Mary Lorenz
Mrs. Christine LottΔ
Mrs. Janet A. Lutton
Ms. Kathryn Mahard
Mr. Patrick Major
Mrs. Kimberly Mancillas
Ms. Marion K. Mann+Δ
Ms. Debbie Manning
Mr. Dean Margeson
Mrs. Mary Markel
Ms. Marjorie Markon+
Ms. Debbie MartensΔ
Ms. Marcia K. Mathews
Mr. Lee Maxwell+
Mr. John T. McAlear
Ms. Rosellen McAlear
Dr. Euretta McAllister
Ms. Katherine McAuliffe
Ms. Pamela McBride
Ms. Mary McCaffery
Ms. Georgia T. McCall
Mr. Jeff McCormack
Mr. Aron McCormick+
Mr. Kyle McCree*
Mr. William K. McDonald+
Mr. Matt McIlroy
Mr. Philip J. McKeachie
Ms. Kim McKerracher
Mrs. Diana McKittrick
Ms. Rebecca McLogan
Mrs. Wendy McWhorter
Ms. Bernadette Medura
Ms. Shelly R. Meisel
Mr. Herb Merrell+
Mr. Gary L. Messenger+Δ
Dr. Juan E. Mestas
Ms. Nancy Meszaros
Ms. Catherine Meza
Ms. Jill Michelle
Mrs. Linda Midler+Δ
Mrs. Charlene Miller
Ms. JoAnn Miller
Ms. Junko Miller+
Mrs. Patricia Minshall
Ms. Barbara Mirsky
Mrs. Donna Misener
Mrs. Sue Modrak+Δ
Ms. Anita Moliterno
Ms. Nancy J. Moncrieff
Mrs. Annamarie Mondelli

Mr. Robert Mooney
Mr. Gerald Moore
Ms. Kathleen Moore
Ms. Patricia Moore
Mrs. Martha O. Morin
Rev. Elizabeth Morris Downie+
Ms. Margaret Mary Mosher
Ms. Diane Murphy
Mrs. Linda Murphy
Ms. Sandra Murphy
Ms. Kelly Myers
Mr. Thomas L. Myers
Ms. Laurie Nagy
Ms. Pandora Nash
Ms. Michelle Nassar
Ms. Sherry A. Nelsen
Ms. Jane Nemitz
Ms. Sandra Nicholas
Ms. Joyce NicholsΔ
Mr. Scott Nichols
Ms. Kate Nickels*
Mrs. Kimberly Noe
Ms. Patsy Noffsinger+
Ms. Missie Nordrum*
Ms. Ruth A. O'Connell
Miss Janet T. O'Keefe
Ms. Patricia O'KeefeΔ
Ms. Carolyn S. O'Neil
Mrs. Marsha L. Ochodnicki
Mr. Christopher R. Odette
Ms. Nancy Olds
Mrs. Julia Orr
Mrs. Shirley Owens
Ms. Jolene Padgett
Ms. Diana Papp Page+Δ
Ms. Virginia Panek
Ms. Janice Price+
Mrs. Patricia Paris
Ms. Jacqueline Parks
Mrs. Leslie Pearce+Δ
Mrs. Betty O. Pearson+
Ms. Susan Pekarek
Mrs. Michelle Pennington
Mr. Rene M. Peterman
Mr. Will Petseys
Mrs. Heidi Phaneuf
Ms. Ashley Phifer
Mr. Frank Phillips
Ms. Jacqueline PiechowskiΔ
Ms. Sally Pierson+
Ms. Connie Pillen-Guy+
Mrs. Karan A. Pinkston
Mr. Michael Post+
Mr. Cory Potter
Mr. Mort Potter+Δ
Ms. Karen Prater
Mr. Harry S. Preston
Mrs. Denise L. Procuier
Mr. Glen Allen Pruett
Mr. John S. Pryor
Mrs. John Quin
Ms. Valerie Quinn
Mrs. Anna Marie Rado+
Ms. Barbara Reehl
Mrs. Christine Refice
Ms. Connie Reynolds

Mr. Danny Reynolds
 Miss Blair Richvalsky
 Mrs. Sharon Rickard
 Mrs. Kathy A. Ridley
 Mr. Nathan Riek
 Mrs. Andrea Roat
 Mrs. Paula Robinson
 Ms. Cynthia Robson+
 Ms. Violet K. Rodgerson
 Miss Linda Romanow
 Dr. Judy Rosenthal
 Ms. Sally Ross
 Ms. Margaret J. Royce+
 Mrs. Anne Rubenstein+
 Ms. Debra Rubey+
 Ms. Carol F. Rush
 Ms. Linda Russell
 Mr. Ira A. Rutherford+
 Mr. Ghassan K. Saab*
 Ms. Deanna Sagady
 Mr. William Salo
 Ms. Cherlyn Satkowiak
 Mrs. Joan Sauter
 Ms. Marcia Sauvie+Δ
 Miss Jenette Schanick+Δ
 Ms. Jane Schepler
 Mrs. Mary Schiros
 Mr. Ronald J. Schmitz
 Ms. Debra Schnettler
 Ms. Marsha V. Schwarz+Δ
 Mrs. Marsha Schweikert
 Ms. Jacqueline Scott+Δ
 Ms. Bernice Scott
 Ms. Gloria Scruggs+Δ
 Mrs. Peggy Searight
 Ms. Marian D. Seguin
 Ms. Kimberly Sharpe
 Mrs. Ruth O. Sharpe+
 Mrs. Hannelore Shattuck
 Ms. Pam Shaw
 Ms. Peggy L. Shaw
 Ms. Cherie Shear+Δ
 Ms. Patricia Shepard
 Mrs. Marie Sheppard+
 Ms. Linda Show
 Ms. Patrice Shriver+Δ
 Ms. Margaret Simen+
 Mrs. Darlene Simonds
 Mrs. Kristina L. Simoni
 Mrs. Anla N. Slogor
 Ms. Rose Small
 Ms. Joan W. Smalley+
 Mr. David Smallidge+
 Ms. Elena Smith+
 Dr. Ernestine R. SmithΔ
 Mr. Gary Smith+
 Ms. Juanita Smith
 Mr. Jim Smith
 Mr. Nicholas Smith
 Mrs. Wanda Smithingell
 Ms. Deborah Snow
 Mrs. Barb Soloko
 Ms. Heidi Solomon
 Ms. Berna S. Sorscher+Δ
 Mr. Dean Sousanis
 Mrs. Vivian Sowle+

Mrs. Lois Sporer
 Mrs. Mary Sprague
 Mrs. Kathryn Stack
 Mrs. Marel L. Staisil
 Mr. Aaron Stanger
 Mr. Kristopher Stanley
 Ms. Zoe Starkweather+Δ
 Mrs. Kelly L. Stein
 Mrs. Patricia Stepanick
 Ms. Audrey E. Stephens+
 Mrs. Betsy Yarrow Stevens+
 Mrs. Sally Stevens+Δ
 Ms. Tracey Stewart
 Mr. Paul Stirling
 Mrs. Josephine Sredich
 Mr. Richard Suhr+
 Ms. Virginia Sullivan
 Mrs. Phyllis Sutherland+
 Mrs. Olga Swarthout
 Ms. Sharifah Sweet
 Ms. Roberta Sweetman+
 Mr. Clifford Sykes
 Mrs. Irene Szuch
 Rev. Frederick H. Taggart+Δ
 Mr. David Tait
 Mr. James Tanner
 Ms. Laurie A. Tata+
 Ms. Amy Taylor
 Ms. Dorothy S. Taylor+
 Mr. Thomas A. Taylor
 Mrs. Pamela TerBush
 Mrs. Sally Thielen
 Ms. Christine Thomas
 Mr. Robert R. Thomas+
 Ms. Marguerite Thompson+Δ
 Miss Susan M. Thompson
 Mr. Mark Q. Thornton+Δ
 Mr. Don Tinson II+
 Mrs. Linda Todorow
 Mrs. Joan Topham
 Ms. Nickolena Topping
 Mr. John Tracy
 Mr. Tom Travis
 Ms. Jane B. Trotter+
 Ms. Amy Troyer
 Mrs. Anna Marie Tucker
 Mrs. Jean Valley+
 Ms. Rita Valley+
 Mrs. Theresa A. Vann
 Mr. David Vaughn
 Ms. Jeanette Veenhuis
 Ms. Benedicte Veillet
 Mrs. Christine Venturino
 Ms. Jolyn Vita
 Ms. Mary Vojdik+
 Mrs. Rosemary Vuckovich
 Ms. Ellen Waara+
 Mrs. Janet L. Wachowski
 Ms. Jane C. Wagner
 Mrs. Renee Wagner
 Mrs. Barbara Walworth
 Ms. Jane Walworth+
 Ms. Wanda R. Warby+
 Ms. Alice Ward
 Ms. Katharine D. Weaver
 Ms. Brenda Wehrl

Mr. John E. Wentworth
 Mrs. Joyce Wheat
 Ms. Joanne White
 Ms. Myra W. White+
 Ms. Kimberly Wilcox+Δ
 Mrs. Marilyn Wilhelmi
 Ms. Pisha Williams
 Mr. Tom Williams
 Mrs. Janet Williamson+
 Ms. Jean WillingΔ
 Mr. Gabriel Wilson
 Mr. John Wilson
 Mr. Michael Wilson
 Mrs. Velma Wilson
 Mrs. Elizabeth Wise
 Ms. Mary Wolski+
 Ms. Wynne C. Wood
 Mrs. Samantha Woodbeck
 Ms. Susan Wotring
 Ms. Dianne E. Wright
 Mrs. Heather Wright
 Mrs. Margie Murray Wright
 Ms. Veronica Wroblewski
 Ms. Darla S. Wynn+
 Ms. Darleen Yaskanin
 Ms. Victoria Ybarra
 Ms. Margaret Yerman
 Mrs. Alberta M. York
 Mrs. Barbara A. Young
 Mrs. Elaine A. Young
 Ms. Cynthia Zack
 Mr. Theodore T. Zahrfeld+Δ
 Mr. Jason Zalk
 Mr. Ray Zbiciak
 Mrs. Helen Zimmerman
 Ms. Maria Zoltowski

Students

(\$20 annually)
 Miss Khandess Aikins
 Mr. Joel Arnold
 Miss Audrey Barratt-McCartney
 Mr. Evan Bessette
 Miss Miranda Bissinger
 Mr. Brian Bremer
 Mr. Robert Burack
 Mr. Joseph Burns
 Miss Rory Castor
 Miss Katherine Celini
 Miss Erin Collins
 Miss Braylan Delduca
 Miss Elizabeth Dow
 Miss Kacie Forbes
 Ms. Violet Freeland
 Ms. Morgan Gasso
 Miss Anastasia Goldyn
 Miss Kelly Grant
 Ms. Karrie Graves
 Miss Alexandra Greenfelder
 Miss Morgan Hamilton
 Mr. Raphael Harlan+
 Ms. Alfreda A. Harris+
 Mr. Michael Hatten*
 Ms. Sofia Henke
 Mr. Sterling Hicks
 Miss Brittany Holben
 Miss Lauren Holloway

Miss Morgan Hubert
 Miss Annie Jankowski
 Miss Kylee Johnson
 Miss Wesley Ann P. Johnson+
 Miss Julia Knapp
 Mr. Kyle Laduke
 Mr. Tommy Lambert
 Miss Paige Lamphere
 Mr. Dennis Lampron
 Miss Emily Legleitner
 Ms. Brooke Madar
 Miss Madison McCrum
 Miss Emma McEnrue
 Miss Caitlyn McMullen
 Mr. Brendan Mitchell
 Miss Hannah Rose Mohrman
 Miss Hattie Molina
 Miss McKenna Morin
 Miss Kaitlyn R. Morris
 Mr. Sabu Neerampuzha+
 Miss Mariah Parker
 Miss Emily Pinter
 Miss Alexis Pleasant
 Mrs. Maria Antonietta Proffer
 Miss Melanie Reed
 Miss Halley Reek
 Miss Kaleigh Rice
 Miss Ashley Roberts
 Ms. Paige Schaap
 Mr. Papillon Schunzel
 Miss Hailan Shaw
 Miss Jenna Simmons
 Ms. Mary Siring
 Miss Chloe Stewart
 Miss Jalen Stewart
 Miss Ashlee Stimson
 Mr. Benny Stribling
 Miss McKenna Telke
 Mr. Andrew Tippen
 Mrs. Jacqueline O. Weaver
 Mr. Alex Weidenhammer
 Mr. Cornelius Wilson
 Miss Patricia Wisenbaugh
 Mr. Conor Wolfgram+

Youth

(\$20 annually)
 Huma Ahmad
 Rachel Ajemian
 Jayden Allen
 Sophia Beath
 Madison Briggs
 Landon Brown
 Joseph Buffington
 Charles Buffington
 Zachary Cain
 Katie Cartier
 Erin Chynoweth
 Zoe Cooney
 Declan Cronley
 Brayden Cummings
 Miles Dantzler
 Miles Davis*
 Kennedy Dean
 Lillian Decker
 Kevin Dinser
 Braeden Dixner

Julianna Deming
Madyson Flack
Eric Ford
Catherine Fox
Amirah Gordon
Kaeto Grappin
Jillian Guise
Breeghan Hamilton
Michaela Hamilton
Spencer Mae Hamilton
Halley Hamann
Sarah Rabiah Harmon
William Rabiah Harmon
Emily Harnden
Ola Hassan
Grace Hogan
Alyssa Hopkins
Madison Hopkins
Cara Horcha-Fuwell
Chloe Horcha-Fuwell
Julia Houle
Natalie Houle
Annelise Hull
Elijah Jackson
Ariel Y. Jenkins
Grace Johnson
Tyler Johnson
Averi King
Owen Kleeman
Elizabeth Kuehl
Gabrielle Landsgaard
Jack Larson
Chris Lengyel
Katherine Lengyel
Amari Marshall
George Mask
Allison McDonagh
Lauren McDonagh
Grace McLavy
Melody Miles
Will Mitchell
Michael Monroe
Harper Neil
Grace Nicholes
Matthew Nicholes
Alexander Nigrine
Cameron O'Connor
Katie O'Connor
Nathan Orvis
Sidney J. Papenfus
Jada Rose Patterson
Addeline Perrault
ZaReah Phelps
Angelia Preketes
James Roche
Maggie Roche
Katie Rusinek
Emma Sanborn
Elliot Sanford
Emily Shuell
Iman Shah
Aceil Shamieh
Sana Simkani
Emily Slocum
Isabella Smith
Jackson Smith

Ava Stephenson
Grant Sterling
Andrew Stoll
Colton Stoll
Meredith Strong
Eve Sturgess
Emilea Sturk
Sawyer Tafoya
Addison Thomas
Charli Thomas
Lily Thompson
Madison Threet
Addisen Timpf
Olivia Timpf
Katelyn Tran
Olivia Vanochten
Rebecca Walton
Carter Weldon
Lucy West
Layla Wilhelmi
Carmen Williams
Lilah Williams
Nataevion Williams
Jaida Wilson
Ashley Wirsing
Ethan Young
Sun Yu

FINANCIAL STATEMENT

Independent Auditor's Report

Board of Directors
Flint Institute of Arts
Flint, Michigan

We have audited the accompanying financial statements of Flint Institute of Arts which comprise the statement of financial position as of June 30, 2013, and the related statements of activities, functional expenses, and cash flows for the year then ended, and the related notes to the financial statements.

Management is responsible for the preparation and fair presentation of these financial statements in accordance with accounting principles generally accepted in the United States of America; this includes the design, implementation, and maintenance of internal control relevant to the preparation and fair presentation of financial statements that are free from material misstatement, whether due to fraud or error.

Our responsibility is to express an opinion on these financial statements based on our audit. We conducted our audit in accordance with auditing standards generally accepted in the United States of America. Those standards require that we plan and perform the audit to obtain reasonable assurance about whether the financial statements are free of material misstatement.

An audit involves performing procedures to obtain audit evidence about the amounts and disclosures in the financial statements. The procedures selected depend on the auditors' judgment, including the assessment of the risks of material misstatement of the financial statements, whether due to fraud or error. In making those risk assessments, the auditor considers internal control relevant to the entity's preparation and fair presentation of the financial statements in order to design audit procedures that are appropriate in the circumstances, but not for the purpose of expressing an opinion on the effectiveness of the entity's internal control. Accordingly, we express no such opinion. An audit also includes evaluating the appropriateness of accounting policies used and the reasonableness of significant accounting estimates made by management, as well as evaluating the overall presentation of the financial statements.

We believe that the audit evidence we have obtained is sufficient and appropriate to provide a basis for our audit opinion.

In our opinion, the financial statements referred to above present fairly, in all material respects, the financial position of Flint Institute of Arts as of June 30, 2013, and the results of its operations and its cash flows for the year then ended in accordance with accounting principles generally accepted in the United States of America.

We have previously audited Flint Institute of Arts' June 30, 2012, financial statements, and our report dated January 12, 2013, expressed an unmodified opinion on those financial statements. In our opinion, the summarized comparative information presented herein as of and for the year ended June 30, 2012 is consistent, in all material respects, with the audited financial statements from which it has been derived.

Our audit was conducted for the purpose of forming an opinion on the June 30, 2013 financial statements as a whole. The June 30, 2013 schedule of investments is presented for purposes of additional analysis and is not a required part of the financial statements. Such information is the responsibility of management and was derived from and relates directly to the underlying accounting and other records used to prepare the financial statements. The information has been subjected to the auditing procedures applied in the audit of the financial statements and certain additional procedures, including comparing and reconciling such information directly to the underlying accounting and other records used to prepare the financial statements or to the financial statements themselves, and other additional procedures in accordance with auditing standards generally accepted in the United States of America. In our opinion, the June 30, 2013 information is fairly stated in all material respects in relation to the financial statements as a whole.

Yeo & Yeo, P.C.

Flint, Michigan
February 17, 2014



4468 Oak Bridge Dr.
Flint, MI 48532
810.732.3000
800.899.4742
810.732.6118 fax

Statement of Financial Position

June 30, 2013 with comparative totals for 2012

	Unrestricted		Temporarily Restricted		Permanently	Total All Funds	
	Operating Fund	Plant Fund	Restricted Fund	Permanent Collection Fund	Restricted Endowment Fund	2013	2012
Assets							
Cash and cash equivalents	\$ 387,044	\$ -	\$ -	\$ -	\$ -	\$ 387,044	\$ 31,690
Restricted cash	-	-	-	-	-	-	119,995
Accounts receivable	79,410	-	-	-	2,681	82,091	98,091
Contributions receivable	-	-	146,366	-	-	146,366	6,626
Inventory	136,561	-	-	-	-	136,561	135,534
Prepaid expenses	44,223	-	47,406	-	-	91,629	113,214
Due from other funds	-	-	509,600	3,580	44,480	557,660	309,991
Fixed assets	-	16,133,920	-	-	-	16,133,920	16,632,177
Intangible asset	-	25,000	-	-	-	25,000	25,000
Permanent collection	-	-	-	1	-	1	1
Interest in income trusts	-	-	-	-	1	1	1
Trusts held by third party	-	-	-	-	486,827	486,827	457,477
Long-term investments	205,931	-	-	-	14,747,348	14,953,279	14,251,234
Total assets	\$ 853,169	\$ 16,158,920	\$ 703,372	\$ 3,581	\$ 15,281,337	\$ 33,000,379	\$ 32,181,031
Liabilities and Net Assets							
Liabilities							
Accounts payable	\$ 30,778	\$ -	\$ 2,912	\$ -	\$ -	\$ 33,690	\$ 41,290
Accrued expenses and withheld taxes	66,671	-	-	-	-	66,671	51,853
Due to other funds	557,660	-	-	-	-	557,660	309,991
Cash held for others	-	-	-	-	-	-	119,995
Capital lease payable	-	13,460	-	-	-	13,460	-
Deferred revenue	15,902	-	-	-	-	15,902	206,743
Total liabilities	671,011	13,460	2,912	-	-	687,383	729,872
Net Assets							
Unrestricted - operations	182,158	16,145,460	-	-	-	16,327,618	16,793,639
Temporarily restricted	-	-	700,460	3,581	-	704,041	376,610
Permanently restricted	-	-	-	-	15,281,337	15,281,337	14,280,910
Total Net Assets	182,158	16,145,460	700,460	3,581	15,281,337	32,312,996	31,451,159
Total liabilities and net assets	\$ 853,169	\$ 16,158,920	\$ 703,372	\$ 3,581	\$ 15,281,337	\$ 33,000,379	\$ 32,181,031

Statement of Activities

Year ended June 30, 2013 with comparative totals for 2012

	Unrestricted		Temporarily Restricted		Permanently Restricted	Total All Funds	
	Operating Fund	Plant Fund	Restricted Fund	Permanent Collection Fund	Endowment Fund	2013	2012
Revenues, Gains, and Other Support							
Public support							
Contributions/Bequests	\$ 314,218	\$ 50,047	\$ 265,190	\$ 127,000	\$ 44,480	\$ 800,935	\$ 1,372,035
Grants	1,834,224	-	542,100	-	-	2,376,324	2,443,327
Pierson trust distributions	14,188	-	-	-	-	14,188	-
CFGF trust distributions	400,220	-	8,394	-	-	408,614	366,386
Total public support	2,562,850	50,047	815,684	127,000	44,480	3,600,061	4,181,748
Revenue							
Museum shop and cafe sales - less direct costs of \$ 178,919 and \$ 163,638	69,387	-	-	-	-	69,387	65,132
Memberships	229,150	-	-	-	-	229,150	205,785
Tuition	184,479	-	19,827	-	-	204,306	230,480
Exhibitions and programs	-	-	892	-	-	892	109,036
Ticket sales	30,948	-	16,514	-	-	47,462	35,303
Investment income	4,713	-	-	-	281,003	285,716	202,043
Net realized gain on investments	50,193	-	-	-	605,821	656,014	414,446
Miscellaneous income	63,704	-	-	-	-	63,704	57,112
Total revenue	632,574	-	37,233	-	886,824	1,556,631	1,319,337
Net assets released from restrictions							
Satisfaction of grant/program restrictions	552,651	-	(552,651)	-	-	-	-
Total public support and revenue	3,748,075	50,047	300,266	127,000	931,304	5,156,692	5,501,085
Expenses and losses							
Program services							
Classes	446,528	117,946	-	-	-	564,474	549,438
Public information	326,219	20,376	-	-	-	346,595	310,502
Permanent collections	623,154	96,136	-	-	-	719,290	718,308
Exhibitions	739,761	199,446	-	-	-	939,207	1,375,191
Museum shop	248,814	40,748	-	-	-	289,562	268,952
Programs	792,163	78,917	-	-	-	871,080	768,396
Total program services	3,176,639	553,569	-	-	-	3,730,208	3,990,787

Statement of Activities

Year ended June 30, 2013 with comparative totals for 2012

	Unrestricted Funds		Temporarily Restricted		Permanently Restricted	Total All Funds	
	Operating Fund	Plant Fund	Restricted Fund	Permanent Collection Fund	Endowment Fund	2013	2012
Supporting services							
Management and general	\$ 1,146,703	\$ 20,375	\$ -	\$ -	\$ -	\$ 1,167,078	\$ 1,175,521
Total expenses	4,323,342	573,944	-	-	-	4,897,286	5,166,308
Excess (deficiency) of public support and revenue over expenses before other changes in net assets	(575,267)	(523,897)	300,266	127,000	931,304	259,406	334,777
Other changes in net assets							
Bad debt expense	-	-	-	-	(126)	(126)	-
Loss on disposal of fixed assets	-	(335)	-	-	-	(335)	-
Purchases of collection items not capitalized	-	-	-	(123,420)	-	(123,420)	(904,590)
Trust transfers	641,999	-	25,719	-	(667,718)	-	-
Interfund transfers	6,592	12,515	(2,134)	-	(16,973)	-	-
Change in value of trusts held by third party	-	-	-	-	29,350	29,350	(2,999)
Net unrealized gain (loss) on investments	(27,628)	-	-	-	724,590	696,962	(853,242)
Total other changes in net assets	620,963	12,180	23,585	(123,420)	69,123	602,431	(1,760,831)
Total change in net assets	45,696	(511,717)	323,851	3,580	1,000,427	861,837	(1,426,054)
Net assets - beginning of year	136,462	16,657,177	376,609	1	14,280,910	31,451,159	32,877,213
Net assets - end of year	\$ 182,158	\$ 16,145,460	\$ 700,460	\$ 3,581	\$ 15,281,337	\$ 32,312,996	\$ 31,451,159

Board of Trustees

Samuel M. Harris, *President*
Katharine W. Eiferle, *First Vice-President*
David T. Taylor, *Second Vice-President*
Marilyn Kopp, *Secretary*
Diane Lindholm, *Treasurer*
Elizabeth S. Murphy, *Immediate Past President*
Michael J. Behm
Susan Steiner Bolhouse
Eleanor E. Brownell
James D. Draper
Shannon Easter White
Chris Flores
Mona Hardas
Janice T. Harden
Louis A. Hawkins
Armando Hernandez
Lynne Hurand
Linda LeMieux
Thomas B. Lillie
Thomas J. Mitchell
Robert S. Piper
Michael Rucks
Ira A. Rutherford
Elisabeth Saab
Grayce Scholt
D.J. Trela
Claire M. White
Michael Wright
Dean Yeotis

Honorary Trustees

Elizabeth Neithercut

Staff

John B. Henry, *Director*
Andrea Allen, *Café/Beverage Manager*
Ed Bradley, *Associate Curator of Film*
Sally J. Case, *Chief of Security*
Tom Cheek, *Internet Technician/Photographer*
Sarah Christensen, *Curatorial Assistant*
Bryan T. Christie, *Facilities Manager*
Justin Clanton, *Facilities Assistant*
Jon Cockerill, *AV Technician*
Shelby Coleman, *Café Assistant*
Gail M. Curry, *Receptionist*
Jason Dake, *Art Educator*
Emma Davis, *Education Media Coordinator*
Monique M. Desormeau, *Curator of Education*
William Farmer, *Security*
Jeff Garrett, *Assistant Director of the Art School*
Kimberly Giacchina, *Visitor Services*
Alex Gilford, *Museum Educator*
Anthony Gittens, *Security*
Tracee Glab, *Curator of Collections & Exhibitions*
Courtney Hatcher, *Café Assistant*
Jaclyn Hatcher, *Retail Clerk*
Michelle Hathaway, *Café Assistant*
Amanda Hayes, *Education Assistant*
Lindsey Heine, *Events & Rental Assistant*
Valorie Horton, *Visitor Services Coordinator*
Donald O. Howell, *Assistant Facilities Manager & Preparator*
Judith M. Irwin, *Administrative Assistant to the Director*
Robert J. Irwin, *Security*
Heather Jackson, *Assistant Registrar*
Sarah Jarrett, *Café Assistant*
Judy A. Johnson, *Librarian*
Johnnie Jones, *Security*
Allison Kimber, *Development Assistant*
Joseph Kish, *Facilities Assistant*
William Koryciak, *Security*
Natalia Lafuente, *Visitor Services*
Miles Lam, *Senior Graphic Designer*
Jennifer Lane, *Visitor Services*
Kayla Latham, *Visitor Services*
Micheline LaTurneau, *Security*
Sheena Law, *Education Administrative Assistant*
Frederick Luten, *Custodian*
Susan J. Marr, *Visitor Services, Administration & Membership*
Michael D. Martin, *Coordinator of Collections & Exhibitions*
Y. Jan Massenberg, *Visitor Services*
Don McCombs, *Security*
Jeffrey McLaurin, *Facilities Assistant*
Michael Melenbrink, *Assistant Director of Finance & Administration*
Rachel Jordan Miller, *Curatorial Assistant*
Erin Mohrman, *K-12 Educator*
Timothy Monosmith, *Security*
Kara Myatt, *Visitor Services & Events Assistant*
Scott Nichols, *Facilities Assistant*
Peter H. Ott, *Registrar*
Louise Parham, *Visitor Services*
Michelle Pennington, *Assistant Curator of Education*
Ashley Phiffer, *Assistant Curator*
Frank Phillips, *AV Technician*
Cory Potter, *Retail Services Manager*
James C. Ratza, *Security*
Lois Revenaugh, *Visitor Services*
Mark Robichaud, *Facilities Assistant*
Scott Romanowski, *Security*
Sherren Sandy, *Events Coordinator*
Linda Savage, *Visitor Services*
Kathryn K. Sharbaugh, *Assistant Director of Development*
Kimberly Sharpe, *Retail Clerk*
Valarie F. Shook, *Membership Coordinator*
Nick Smith, *Café Assistant*
Martin J. Stefan, *Security*
Tracey S. Stewart, *Development Officer*
Amy Sutkowi, *Art School Administrative Assistant*
Billie G. Traylor, *Security*
Kathleen A. Weiss, *Security*
Gabriel Wilson, *Security*
Michael Wilson, *Security*
Heather Wright, *Graphic Designer*

Art School Faculty

Guy Adamec
James Ames
Rebecca Andrus
Marty Calhoun
Chris Conklin
Chrysa Cronley
Alla Dubrovich
Kimberley Emmert
Frank James Fisher
Alice Foster-Stocum
Michele Gunn
Jeff Hageman
Paul Hauth
Craig Hinshaw
Barbara Holmer
Ryan Kelsey
Karyn Konkel
Igor Macherkevich
Rebekah Mikkelson
Erin Mohrman
Matthew Osmon
Rachel Reynolds
Lois Sharp-Schneider
Courtney Simpson
Arla Slogor
Anita Spencer
William Stolpin
Karen Sutherland
Richard Tesner
Timothy Widener
Emily Williams
Heather Wright
Kay Yourist



FLINT INSTITUTE OF ARTS

1120 E. Kearsley St.
Flint, MI 48503
810.234.1695 phone
810.234.1692 fax
www.flintarts.org

