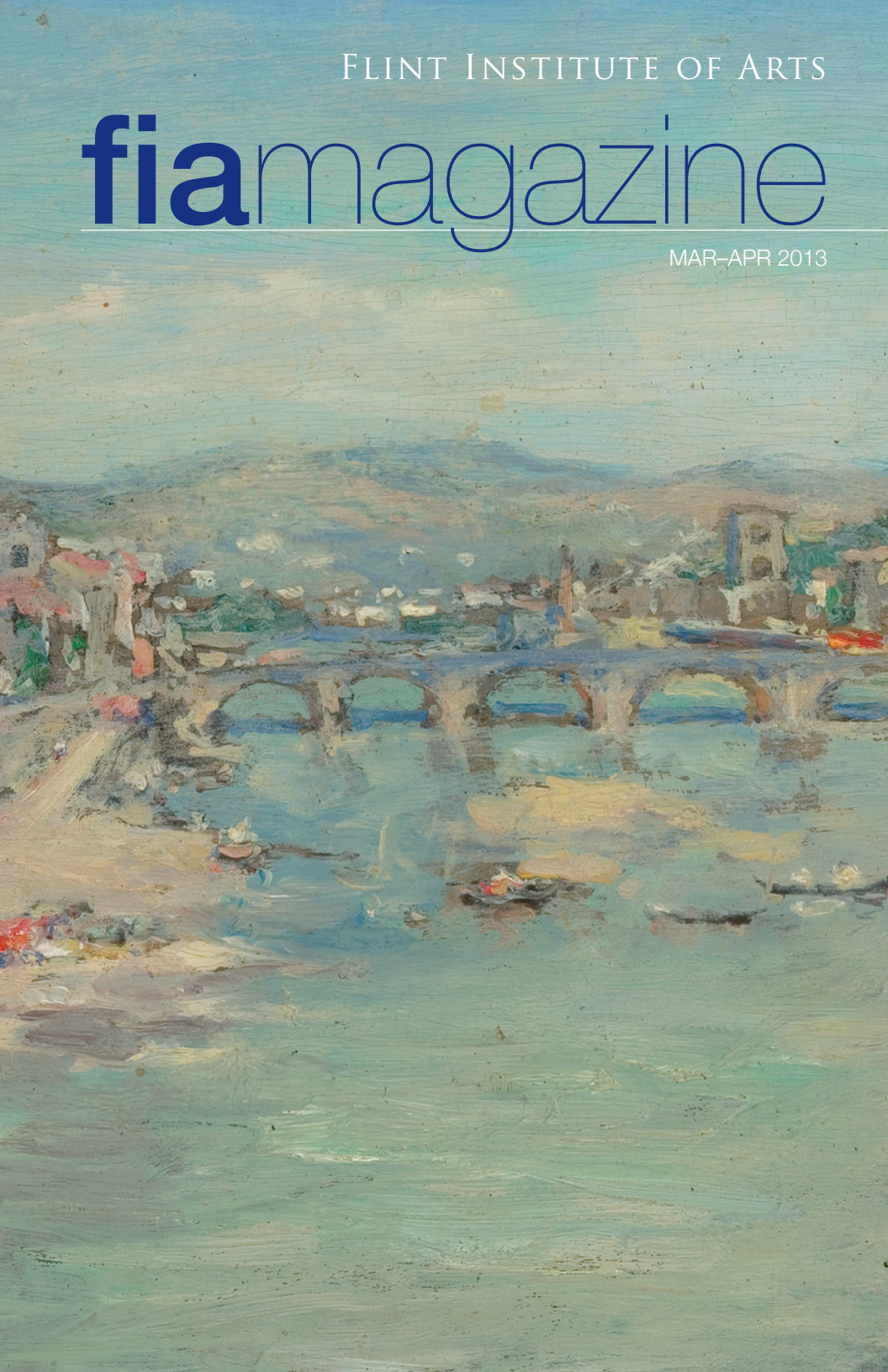


FLINT INSTITUTE OF ARTS

fiamagazine

MAR-APR 2013



from the director	2
exhibitions	3–8
video gallery	9
featured acquisition	10
art on loan	11
calendar	12
films	13–14
news & programs	15–19
art school	20–21
education	22–26
membership	27–30
contributions	31–34
art sales & rental gallery	35
founders travel	36
museum shop	37

contents



Board of Trustees

Samuel M. Harris
President

Katharine W. Eiferle
First Vice-President

Marilyn Kopp
Secretary

Diane Lindholm
Treasurer

Elizabeth S. Murphy
Immediate Past-President

Michael J. Behm

Susan Steiner Bolhouse

Eleanor E. Brownell

James D. Draper

Shannon Easter White

Chris Flores

Mona Hardas

Janice T. Harden

Louis A. Hawkins

Armando Hernandez

Lynne Hurand

Linda J. LeMieux

Thomas B. Lillie

Thomas J. Mitchell

Robert S. Piper

Michael Rucks

Ira A. Rutherford

Elisabeth Saab

Grayce Scholt

David T. Taylor

D.J. Trela

Claire M. White

Michael Wright

Dean Yeotis

Honorary Trustee

Elizabeth Neithercut

Administration

John B. Henry, III
Director

Kathryn K. Sharbaugh
Assistant Director of Development

Michael A. Melenbrink
Assistant Director of Finance & Administration

Jeff Garrett
Assistant Director of the Art School

Tracee J. Glab
Associate Curator of Exhibitions

Monique M. Desormeau
Curator of Education

Cover Image

From the exhibition *Reflections on Water in American Painting: The Phelan Collection*

William Merritt Chase
American, 1849–1916
Ponte Alla Grazia, The Arno - Florence (detail)
oil on wood panel, 1909
6.125 x 9.25 inches
Collection of Arthur J. Phelan

In addition to the many exhibitions, programs, and events listed in this issue, the FIA continues to lay the groundwork for future service to the community.

After decades of research, we know brain development accelerates quickly in infancy and is well advanced long before 5-year-olds reach Kindergarten. Therefore, it is clear that if we wish to improve students' success, we must start in early childhood with high quality school readiness programs. Providing high quality programs for preschoolers prepares them for school success and ultimately can improve grades, attendance, and graduation rates, especially among children from low-income backgrounds with limited resources to provide the necessary stimulation for development.

Starting this spring, the FIA will provide aesthetic experiences for infants/toddlers and educate parents about how to support their child's visual literacy and language development. While infants may not be able to verbalize an opinion, research has proven that their body language can let an adult know when they find an image aesthetically intriguing. At this point, adults can lay the groundwork for perceptual and cognitive development to occur. By talking to the child about the artwork, pointing out details, and using appropriate vocabulary, parents can foster recognition of cultural symbols and language development.

In addition, a 3 to 5-year-old component provides gallery and studio options that focuses on curriculum themes and seeks to develop and improve art skills as well as math, science, and verbal-literacy skills. The program will engage students to observe artwork closely to sharpen visual discrimination and perception skills necessary for

reading, talk about art to develop a personal language and vocabulary, utilize informal discussions with other children to reinforce language development, increase critical thinking skills as they look at and discuss what they see, practice language and sequencing (math) skills by telling stories about what they see, improve language acquisition by utilizing verbal descriptions (science) to identify selected artworks, and further develop fine motor skills, hand-eye coordination and self expression while creating art.



The Early Childhood programs support the FIA's long range strategic goal of increasing programs for underserved populations, especially families with young children and inner city residents, and addresses important community needs, school readiness and literacy. Developed with input from the Flint Community Schools' (FCS) Head Start staff to ensure that the program meets FCS Head Start needs, the FIA anticipates providing direct services to 100 families with infants/toddlers, 800 3 to 5-year-old children, 1,000 family members, and 30 Head Start teachers this year.

John B. Henry, III
Director

African American Works on Paper

through 3.10.13

Graphic Arts Gallery

Don't miss the last week of *African American Works on Paper*, featuring works

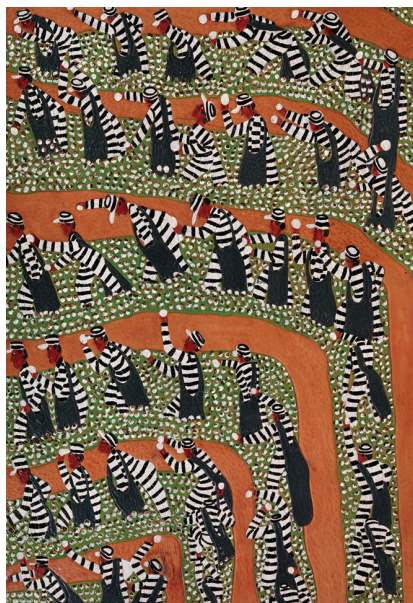
by important artists including Romare Bearden, Clarence Holbrook Carter, Jacob Lawrence, Benny Andrews, and Kara Walker.

Jacob Lawrence
American, 1917–2000
The 1920s...The Migrants Cast Their Ballots
serigraph on paper, 1974
32 x 25 inches
Gift of Lorillard, 1976.7.9



Winfred Rembert: Amazing Grace

Winfred Rembert
American, b. 1945
Chain Gang Picking Cotton
dye on carved and tooled leather, 2004
47 x 32 inches
Courtesy of Adelson Galleries, NY



through 3.17.13

Hodge Galleries

Only three weeks remain to view *Winfred Rembert: Amazing Grace*, an exhibition of more than 40 works on tooled leather. As a boy in Georgia, Rembert did backbreaking labor in the cotton fields. As a young man, he participated in the civil rights movement. At one march he was arrested, later surviving a seven-year prison sentence and a near lynching. “Mr. Rembert’s work is important because it offers an unvarnished view of the segregated South, from the vantage of a lived history,” according to a recent *New York Times* article, “What makes it resonate, however, is Mr. Rembert’s incredible spirit—what one writer in the [exhibition] catalog calls his ‘grace.’”

This exhibition is sponsored by

Organized by the Hudson River Museum



Around the World with 80 Objects

through 8.11.13

Decorative Arts Gallery

Around the World with 80 Objects includes works drawn exclusively from the FIA's permanent collection, featuring objects born out of necessity, such as vessels, weaponry, and tools, alongside works collected for their fascinating artistic designs. Rarely seen selections from the four points of the compass and across millennia have been assembled into this provocative and stimulating exhibition. With a variety of precious materials and innovative techniques, these works

Artist Unknown
African (Nigeria)
Yoruba Beaded Coronet, orikogbofo
natural fiber, cloth, and beads, n.d.
9 x 9.75 x 5.25 inches
Courtesy of Pace Primitive, New York, L2011.5



reflect the imaginative devices of artists from countries and cultures across the globe.

opening in march

David Maxim Figure Portraits

David Maxim
American, b. 1945
Maura
Graphite, colored pencil, 2002
12 x 18 inches
Collection of the artist

3.16.13 – 6.2.13

Graphics Gallery

San Francisco painter

David Maxim has advanced on a broad front, from off-the-wall constructions to images of mountains to whimsical paintings that place historical painters in imagined landscapes. In all his endeavors, he has shown himself to be an accomplished draftsman. According to the artist's statement: "For me, thinking of people in terms of drawing... has enriched my view of the world around me." Maxim is best known for his high-relief



constructions and classically developed paintings. The figure drawings echo his ties to the Bay Area figurative tradition, to theater, and to a sense of personal freedom that has never allowed Maxim to be limited to a single medium or mode.

opening in april

Reflections on Water in American Painting

The Phelan Collection

4.6.13 – 6.16.13

Hodge I Gallery

Tracing the maritime and seaside history of America through 50 paintings, the exhibition *Reflections on Water in American Painting* also illustrates the different artistic trends that shaped American art. Ranging in date from 1828 to 1945, these paintings depict ship portraits, sailboats, warships, waterside towns, waterscapes, harbor scenes, industrial waterfronts, and beach life, capturing virtually every aspect of life on or in the water.

From its beginning, America's history has been intertwined with the oceans that bracket the continent and the rivers that cross it. Waterways opened the continent for exploration and the inland commerce that followed. The fall of rivers and the accessibility of natural harbor basins dictated the locations of many major cities. Artists represented in this exhibition, from the early 19th century to the mid 20th century, have taken inspiration from water, depicting not only its functional and practical side but also exploring its inherent beauty.

This exhibition, drawn from the collection of Arthur J. Phelan, documents evolving trends in transportation, and records economic shifts as inland maritime commerce slowly diminished in the wake of railroad expansion. Highlights of the exhibition include a rare 1828 painting by John S. Blunt of a U.S. Naval frigate, James Bard's meticulously rendered Hudson River steamboat, William Trost Richards' breaking waves, William Merritt Chase's beautiful study of the Arno River, and Reginald Marsh's cathedral-like rendering of a New Jersey railway bridge.

William R. Wheeler
American (1832–1894)
Great Lakes Marine Disaster ▶
oil on canvas, ca. 1860
27.5 x 47.5 inches



Anton Otto Fischer
American (1882–1962)
Summer Seas ▲
oil on canvas, 1945
26 x 32 inches

*This exhibition is
sponsored by*



CITIZENS
BANK



Presented by
**Exhibits Development
Group, USA**



Members Preview Talk, Lecture & Reception

Friday 4.5.13

Gallery Talk @ 5p

Arthur J. Phelan
Collector



Arthur J. Phelan will discuss his collection of paintings in this exhibition. Phelan, who has a BA and MA from Yale University, finds American art to be a useful tool in understanding American history, a philosophy that brought him to collecting. From 1965 to 2000 Phelan has acquired more than 400 American oil paintings and watercolors.

Lecture @ 6p

David Dearing
*Curator, Boston
Athenaeum*



Water in American Painting

This illustrated lecture will survey and investigate depictions in American paintings, from the 1700s to the twentieth century, in which water was given its most active role, images where it is a full player in the drama of nature and in the living, sometimes violent world around us. This history will be traced in works by important American artists such as John Singleton Copley, Thomas Cole, Frederic Edwin Church, Fitz Henry Lane, Winslow Homer, John Sloan, William Glackens, John Marin, Jane Freilicher, and Helen Frankenthaler.

Reception @ 7p

opening in april

Ship Shape

Models of Great Lakes Vessels

4.6.13 – 6.16.13

Hodge II Gallery

Model shipbuilding is an endangered folk art and an important part of our Great Lakes maritime culture. Drawn from the Dossin Great Lakes Museum in Detroit, this exhibition explores the art of model ships through many examples of varying shapes and sizes. The ship models represent a diversity of both model style and ship type, ranging from steamboats and schooners to freighters and frigates. *Ship Shape: Models of Great Lakes Vessels* offers the opportunity to learn about the art of model-making, as well as the stories about the specific vessels themselves.

This exhibition is sponsored by
Flint Sail & Power Squadron

Model of the Delphine IV
ca. 1920
Courtesy of the Detroit
Historical Society



Exhibition Lecture

Saturday 4.6.13

Unique Ships of the Great Lakes: Practical Ships Designed for Practically Every Need

The massive freshwater seas represent a unique nautical environment, unlike anything else in the world. From the beginning, sailors have creatively adapted their craft to the conditions they encountered, and the specific cargoes they carried, from iron ore to passengers. Whether discussing massive freighters or fast speedboats, engineering genius and manufacturing innovation resulted in vessels not found on any other waterway—practically designed and particularly unique.

Lecture @ 4p

Joel Stone
*Curator, Detroit
Historical Society*



Great Lakes Painting

The Inlander Collection

4.6.13 – 6.16.13

Contemporary & Dow Galleries

Jean Crawford Adams
 American, 1884–1972
Lake Geneva
 oil on board, 1929
 16 x 20 inches
 Gift of Pat Glascock and
 Michael D. Hall in memory
 of Harry Butler, Inlander
 Collection, 2003.19



The paintings in the Inlander Collection form a remarkable tribute to artists working in the region between 1910 and 1960. The collection is defined geographically, featuring artists who worked in those states surrounding the Great Lakes basin: Minnesota, Wisconsin, Michigan, Illinois, Indiana, Ohio, Pennsylvania, and New York. The half-century of time represented by these paintings, by artists such as Charles Burchfield, Edmund Brucker, and Clarence Holbrook Carter, is arguably a period of the greatest changes to the land, its people, their work, and their play—changes brought about by wars, by recession and prosperity, by industry, and by innovation. Intense observation of an evolving region combined with the personal commitment to portray the American heartland led to the creation by these artists of images with a distinct regional character.

The majority of works in the collection are at the FIA on permanent loan from the Isabel Foundation, and the remaining portion were donated by Michael Hall and Patricia Glascock, the collectors who assembled the outstanding group of regional paintings.

fleckenstein video gallery

MARCH

Quarta-Feira de Cinzas/Epilogue

Brazil, 2006

by Rivane Neuenschwander with Cao Guimaraes

DVD projection; Soundtrack by O Girvo

5:44 min.

Neuenschwander was born in Brazil in 1967, where she currently lives and works. The title of this film, “Quarta-Feira de Cinzas,” is Portuguese for “Ash Wednesday,” which is the first day of Lent, the period proceeding Easter in the Christian Church. A carnival, or public celebration, typically happens the week before Lent and is marked by public processions, music, and dancing. This film offers a mesmerizing close-up view of a community of ants hauling the remains of a carnival—glimmering cardboard confetti—into the heart of their colony.



Collection Miami Art Museum, museum purchase with funds from the MAM Collectors Council © Rivane Neuenschwander

APRIL

Time After Time

Albania, 2003

by Anri Sala

5:22 min.

Sala stimulates the viewers' senses of sight and sound by forcing them to concentrate on a single puzzling image until it is revealed in a surprise ending. Trained as a painter, Sala creates richly textured images laced with pain, disillusion, and loss.



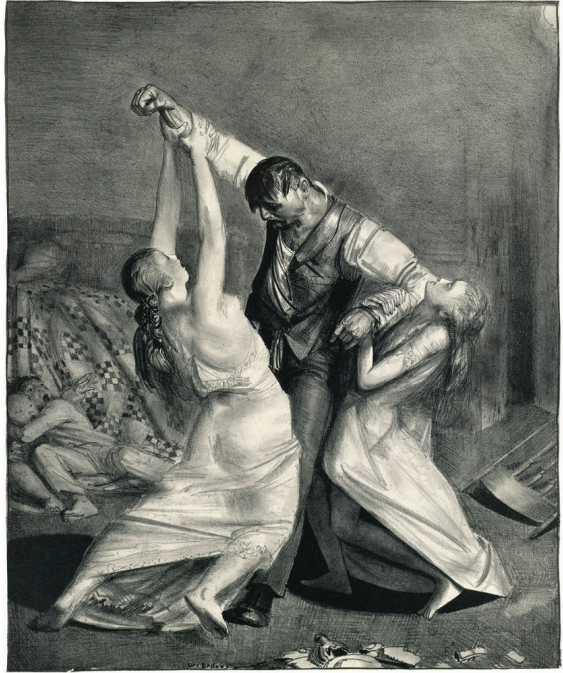
Time After Time is part of the *Point of View: An Anthology of the Moving Image* series.

featured acquisition

George Bellows

The Flint Institute of Arts has more than 8,000 works of art in its permanent collection, with over 3,000 of them being works on paper. More than two-thirds of these works are by American artists. A recent addition to this impressive collection of American works on paper is the 1924 lithograph, titled *The Drunk*, by George Bellows (1882–1925). Bellows was one of a group of artists called the Ashcan School, or The Eight. These New York artists were so named because of their interest in depicting New York City and its inhabitants without idealizing the gritty subject matter. Considered one of the greatest American painters of the 20th century, Bellows was also an accomplished lithographer.

The Drunk illustrates the importance of dynamic symmetry in Bellows' work. Dynamic symmetry, a technique developed by Jay Hambridge, utilizes geometry and ratios to organize the pictorial composition, and it is evidenced in this impressive image by the dramatic triangle created by the figures in the scene. *The Drunk* depicts two women trying to restrain an abusive, intoxicated man, while two children cower in fear in the background. It was initially published as an illustration for *Good Housekeeping* for an article promoting the benefits of Prohibition, the 18th Amendment to the Constitution that made the manufacture, transportation and sale of alcohol illegal in the United States. The article was titled "Why We Prohibit," by Mabel Potter Daggett, published in the magazine in 1924, in the midst of the Prohibition Era, which lasted from 1920 to 1933.



George Wesley Bellows
American, 1882–1925
The Drunk (Second Stone)
lithograph on basingwerk
parchment paper, 1923–1924
22.625 x 17.625 inches
Museum purchase, 2012.31

art on loan

The following artworks are on loan from the FIA to the following exhibitions:

Hughie Lee-Smith: Meditations

2/14/13 – 5/19/13

Muskegon Museum of Art
Muskegon, Michigan

Hughie Lee-Smith
American, 1915–1999
Transition
oil on canvas, 1964
18 x 32 inches
Gift of Mr. and Mrs. Jerome O. Eddy, by exchange, gift of Mrs. Arthur Jerome Eddy, by exchange, and partial gift of Michael Rosenfeld Gallery, New York, 2002.12

Hughie Lee-Smith
American, 1915–1999
Beach Scene
oil on Masonite, 1953
23 x 35 inches
Courtesy of the Isabel Foundation, Inlander Collection, L2003.79

Hughie Lee-Smith
American, 1915–1999
Slum Lad ▼
oil on canvas, ca. 1960
26 x 32 inches
Courtesy of the Isabel Foundation, Inlander Collection, L2003.80



Maurice Merlin & the American Scene, 1930–1947

1/19/13 – 4/15/13

**The Huntington Library,
Art Collections, and
Botanical Gardens**
San Marino, California

William Gropper
American, 1897–1977
Refugees ▼
lithograph on paper, 1937
8.875 x 12.75 inches
Gift of Jack B. Pierson in memory of Robert Martin Purcell, 1979.140



Basil Hawkins
American, 1903–1982
Shop Workers
linocut on paper, n.d.
3.5 x 4.5625 inches
Gift of Madeline Anthony, 2000.130

Basil Hawkins
American, 1903–1982
Strike
pen and wash on paper, n.d.
10 x 6.25 inches
Gift of Jack B. Pierson in memory of Robert Martin Purcell, 1979.269

Philip Pearlstein's People, Places, Things

3/3/13 – 6/16/13

Museum of Fine Arts
St. Petersburg, Florida

Philip Pearlstein
American, b. 1924
*Entrance to Lincoln Tunnel,
Daytime* ▼
oil on canvas, 1992
72 x 72 inches
Gift of Mrs. Cecil Boksenbom, by exchange, 1993.40



MARCH

1	FR	7:30p	FOMA Film: <i>A Royal Affair</i>
2	SA	7:30p	FOMA Film: <i>A Royal Affair</i>
3	SU	1:00p 2:00p	Art Sales & Rental Gallery: <i>Artist Reception</i> FOMA Film: <i>A Royal Affair</i>
6	WE	12:15p	Art à la Carte: <i>Top Secret Rosies</i>
8	FR	7:30p	FOMA Film: <i>The Sessions</i>
9	SA	7:00p 7:30p	Wine Tasting: <i>Now & Later Wines</i> FOMA Film: <i>The Sessions</i>
10	SU	2:00p	FOMA Film: <i>The Sessions</i>
11	MO	6:00p	Bray Lecture: <i>Strategies of Museum Display</i>
13	WE	12:15p	Art à la Carte: <i>Louise Bourgeois: The Spider, the Mistress and the Tangerine</i>
14	TH	7:00p	Book Discussion: <i>The Swan Thieves</i>
15	FR	7:30p	FOMA Film: <i>The Master</i>
16	SA	7:30p	FOMA Film: <i>The Master</i>
17	SU	2:00p	FOMA Film: <i>The Master</i>
20	WE	12:15p	Art à la Carte: <i>Meinrad Craighead: Praying with Images</i>
22	FR	7:30p	FOMA Film: <i>Rust & Bone</i>
23	SA	7:00p 7:30p	Recital: <i>Viennese Night</i> FOMA Film: <i>Rust & Bone</i>
24	SU	2:00p	FOMA Film: <i>Rust & Bone</i>
27	WE	12:15p	Art à la Carte: <i>A Portrait of the Artist as an Old(er) Woman and Blackbirds, Bottle Caps & Broken Records: Environmental Artist Bryant Holsenbeck at Work</i>
28	TH	7:00p	FOMA Film: <i>The Central Park Five</i>
29	FR	7:30p	FOMA Film: <i>The Central Park Five</i>
30	SA	7:30p	FOMA Film: <i>The Central Park Five</i>
31	SU	Closed	Easter

calendar

APRIL

3	WE	12:15p	Art à la Carte: <i>From Revolution to Nature</i>
5	FR	5:00p 7:30p	Members Preview: <i>Reflections on Water in American Painting</i> FOMA Film: <i>Amour</i>
6	SA	10:00a 4:00p 7:30p	Exhibition Opening: <i>Reflections on Water in American Painting, Ship Shape, and Great Lakes Painting</i> Exhibition Lecture: <i>Unique Ships of the Great Lakes</i> FOMA Film: <i>Amour</i>
7	SU	2:00p	FOMA Film: <i>Amour</i>
10	WE	12:15p	Art à la Carte: <i>From Nature to Transcendence</i>
11	TH	7:30p	Special Film Screening: <i>Jews in Baseball: An American Love Story</i>
12	FR	7:30p	FOMA Film: <i>Academy Award Shorts</i>
13	SA	7:30p	FOMA Film: <i>Academy Award Shorts</i>
14	SU	2:00p	FOMA Film: <i>Academy Award Shorts</i>
17	WE	12:15p	Art à la Carte: <i>From Transcendence to Oblivion</i>
18	TH	7:00p	Book Discussion: <i>Lydia Cassatt Reading the Morning Paper</i>
19	FR	6:00p 7:30p	Bray Dinner Theater: <i>"By the Sea, By the Sea, By the Beautiful Sea:" Reflections on Water in American Songs</i> FOMA Film: <i>The Gatekeepers</i>
20	SA	7:30p	FOMA Film: <i>The Gatekeepers</i>
21	SU	2:00p	FOMA Film: <i>The Gatekeepers</i>
24	WE	12:15p	Art à la Carte: <i>Downside UP</i>
26	FR	7:30p	FOMA Film: <i>No</i>
27	SA	11:00a 1:00p 7:30p	Family Program: <i>Slow Art Day</i> Youth Membership: <i>Catching Dreams</i> FOMA Film: <i>No</i>
28	SU	2:00p	FOMA Film: <i>No</i>

foma films

Screenings

Fri & Sat @ 7:30p
Sun @ 2p

- * Special Thursday screening
due to FIA closure on
Easter Sunday

Admissions

\$5 members
\$6 non-members
\$4 FOMA members

Films are supported by



Preview sponsor



Additional sponsors



March 1, 2, 3

A Royal Affair

(Denmark, 2012) Directed by
Nikolaj Arcel, 137 min., subtitled,
rated R

In this Best Foreign
Language Film Academy
Award nominee, a queen
secretly falls in love with
her physician—and starts
a revolution. Rising Danish
star Mads Mikkelsen
heads the cast of a
costume drama praised by
the *Wall Street Journal* as
“a mind-opener crossed
with a bodice-ripper.”

March 8, 9, 10

The Sessions

(U.S., 2012) Directed by Ben
Lewin, 95 min., rated R

Helen Hunt, John Hawkes,
and William H. Macy co-
star in a moving drama
about a man in an iron
lung who, wishing to
lose his virginity, allies
with a professional sex
surrogate. Hunt earned
an Oscar nomination, and
Hawkes excels as the
stricken man.



March 15, 16, 17

The Master

(U.S., 2012) Directed by Paul
Thomas Anderson, 144 min.,
rated R

Joaquin Phoenix, Philip
Seymour Hoffman, and
Amy Adams earned
Oscar nominations for a
drama *Rolling Stone's*
Peter Travers calls
“nirvana for movie lovers.”
An unsettled 1950s
war veteran (Phoenix)
becomes attracted to
“The Cause” and
its charismatic leader
(Hoffman, channeling L.
Ron Hubbard).

March 22, 23, 24

Rust & Bone

(France, 2012) Directed by
Jacques Audiard, 120 min.,
subtitled, rated R

This compassionate
French romance concerns
the relationship between
a homeless man (Matthias
Schoenaerts) and a killer-
whale trainer (Marion
Cotillard)—and how it is
impacted by tragedy.





March 28*, 29, 30

The Central Park Five

(U.S., 2012) Directed by Ken Burns and Sarah Burns, 119 min., not rated

Acclaimed documentarian Ken Burns co-directed this study of the 1989 case of five African-American and Latino teens convicted of rape—and its stunning conclusion. It explores American racial divides and, says the *Wall Street Journal*, “projects equal parts fury and despair.”

April 5, 6, 7

Amour

(Austria/France, 2012) Directed by Michael Haneke, 127 min., subtitled, rated PG-13

Nominated for five Oscars—including best picture, director and actress—this must-see drama about the enduring love of an elderly couple (Jean-Louis Trintignant, Emmanuelle Riva) is “a masterpiece,” according to the *New York Times*.



April 12, 13, 14

Academy Award Shorts

What do guacamole, civil wars, paper airplanes, and Maggie Simpson have in common? They are in this special program presenting the most recent Oscar nominees in the live-action and animation categories. Watch for a complete list of titles and presentation times at flintarts.org.

April 19, 20, 21

The Gatekeepers

(Israel/France/Germany/Belgium, 2012) Directed by Dror Moreh, 95 min., subtitled, rated PG-13

Nominated for the Best Documentary Feature Oscar, this is an unusual look at Shin Bet, the Israeli security agency whose activities and membership are closely held state secrets. “Provocative, revelatory, and astonishing,” praises *The Hollywood Reporter*.



April 26, 27, 28

No

(Chile, 2012) Directed by Pablo Larraín, 118 min., subtitled, rated R

Gael Garcia Bernal heads the cast of this seriocomic Oscar nominee for Best Foreign Language Film, in which an advertising executive devises a campaign to defeat dictator-president Augusto Pinochet in Chile’s 1988 referendum.

special screening

April 11 @ 7p

Jews in Baseball: An American Love Story

(Canada/U.S., 2010) Directed by Peter Miller, 91 min., not rated

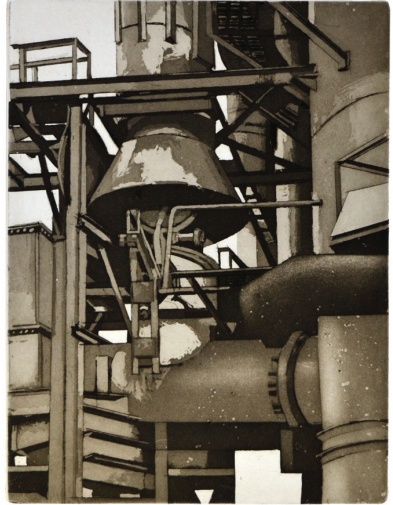
As a preview to the annual Karen Schneider Jewish Film Festival of Flint (coming to the FIA May 5–9), the Flint Jewish Federation and Michigan Jewish Historical Society will present a free screening of a documentary highlighting the achievements of the Detroit Tigers’ Hank Greenberg and other Jewish diamond greats.

fia print society

The 2012 Print

Each year, the FIA Print Society commissions an artist to produce a print to augment both the FIA's collection and the pursuit of personal collecting. The Society is limited to 100 members in good standing at the Family level or above. FIA Print Society dues are \$250.00 annually, which provides each participating member with a selected print and related programs.

The Flint Institute of Arts worked with Sidney Hurwitz to produce the image for 2012. For years, Hurwitz has focused his printmaking on images from the steel industry and related industrial and urban subjects. Working primarily with aquatint, Hurwitz finds American industry to be a great source of visual material. By focusing on the geometric forms of bridges, factories and train stations, the compositions take on abstract qualities.



Sidney Hurwitz
American, b. 1932
Gas Works (proof)
aquatint on paper, 2012
18 x 13.875 inches

Yes, I want to be a member of the FIA Print Society 2012.

Membership Information

Circle: Dr. Mr. Mrs. Ms. Miss

Name _____

Address _____

City _____ State _____ Zip _____

Phone _____

Email _____

Method of Payment

- Check payable to "FIA Print Society"
 Visa MasterCard American Express

Account # _____ Exp. Date _____

Signature _____

- I am currently an FIA member at the \$50 level or higher (see page 27 for levels).
- I would like to upgrade my membership or join the FIA at the \$50 level or higher with an additional:
 \$ _____
- + \$250.00 FIA Print Society dues
- = \$ _____ **Total Payment**

For more information, contact Valarie Shook at 810.234.1695 or vshook@flintarts.org.



The Flint Institute of Arts and the
Junior League of Flint present the

14th Annual Wine Tasting Event Now & Later Wines

Saturday • March 9 • 7p–10p

*Some wines are perfect now—
while others improve with age.*

Along with this unique wine selection, enjoy live entertainment, gourmet fare from area restaurants/bakeries, and a stroll through the galleries. Guests will also have the opportunity to place orders for their favorite wines of the evening at a reduced rate. Each guest will receive a complimentary tasting glass.

You are also invited to take part in the VIP Reception at 6:00p prior to the main event. Meet and sample wines with special guest Dan Farley of J & R Importers.

*Funds raised support the
Flint Institute of Arts and
the Junior League of Flint.*



**Look for your
invitation in the
mail soon. For more
information, call
810.234.1695 or visit
flintarts.org.**

recital

Viennese Night

March 23 • 7p–8:30p



The Founders Society presents the return of pianist Idil Ulgen (Istanbul, Turkey). Ulgen began her music education at the Istanbul University State Conservatory. Since then she received master's degrees from University of Michigan, Ann Arbor and Eastern Michigan University in Piano Performance and Piano Pedagogy. Until recently she taught at Eastern Michigan University. Ulgen plays regularly in solo and chamber music recitals and orchestra concerts in the USA, Austria, Canada and Turkey.

The evening's event will take place in the Bray Gallery with Ulgen performing selections from Beethoven, Haydn, Mozart, and Schubert. Seating is limited. The event will conclude with light refreshments in the FIA Lobby. \$20 per person. The first 20 students will pay \$5.

To make your reservation, please call 810.237.7321 or e-mail artrental@flintarts.org with name, return phone number, number attending, and credit card information.

Flint Arts on the Road

The Flint Institute of Arts has been invited by the United States Department of Education to demonstrate the importance of arts education with an exhibition and live performances in Washington, D.C. on April 22, 2013. The FIA took this opportunity to form a cross-disciplinary collaboration called *Flint Arts on the Road* that will include students from the FIA's Pre-College Portfolio Development Program (PDP), as well as students from Flint Youth Theatre (FYT), The Flint School of the Performing Arts (FSPA), and Tapology.

Gifted students from each organization will have a once-in-a-lifetime educational opportunity to showcase their work. The FIA's PDP student exhibition will be on view in the Lyndon B. Johnson Building. Performances by FYT's Drama School, FSPA's Dort Honors String Quartet, and Tapology's Youth Ensemble will be held in the U.S. Department of Education's 250 seat auditorium. Participants will also visit important cultural and historical landmarks during their stay in Washington.

On March 18, 2013 at 6:00p, FIA members and the public are invited to the dress rehearsal and to meet the students in the FIA Theater followed by a reception with scrumptious hors d'oeuvres.



FIA's Pre-College Portfolio Development Program students

Conservation Grant

Works on paper are particularly sensitive to damage caused by exposure to light. The Flint Institute of Arts has received a generous grant award from the Foundation of the American Institute of Conservation of Historic & Artistic Works to conserve, through glazing applications, six or more artworks from the permanent collection, some of which have never been on display before.



There is Still Time to Make a Gift

The recently passed American Taxpayer Relief Act of 2012 extends the IRA Rollover Provision through December 31, 2013. This provision allows donors age 70.5 or older to give to charities such as the Flint Institute of Arts from their IRAs, tax-free. Up to \$100,000 can be given per year (i.e., excludable from gross income).

For more information or to notify the Flint Institute of Arts that you are making a gift, please contact Kathryn Sharbaugh at 810.234.1695 or ksharbaugh@flintarts.org.

fia archives

A Look Back

Over the course of its 85-year history, the Flint Institute of Arts has played an important role in the cultural life of this community. The next several issues of the FIA magazine will feature photographs from the archives that serve as a reminder of the FIA's interesting past.

These images illustrate that over the years the faces, tastes, fashions, and locations have changed but the museum continues as the epicenter of the visual arts in this region.



The first ten people to correctly name the couple on the right, who played a major role at the FIA, will win two tickets to a FOMA film. Send your answer to vshook@flintarts.org.

workshop highlights

Watercolor For Natural Science Illustration

This class will cover the basics of watercolor techniques used in natural science illustration. Learn about color mixing and methods used to create accurate, detailed portraits of natural subjects such as plants, rocks, and shells. Open to new and returning students to practice a controlled approach to watercolor. Bring a lunch or visit *The Palette* café.

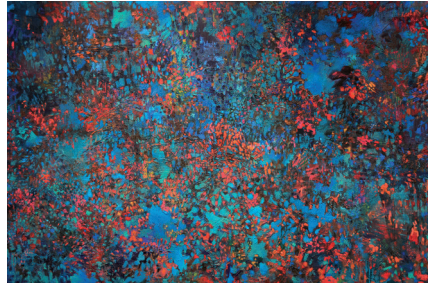
Barbara Holmer, *Instructor*
SA (1 day) 3/9 10a–4:30p
\$51 Members \$59 Non-Members
(beginner, intermediate, advance)



Matting & Framing on a Budget

Using precut mats and simple frames you can make your artwork look finished and ready to hang. You will learn how to choose a mat, mount your artwork, assemble a metal frame, and put it all together. You don't have to spend a lot to have your artwork look professionally finished. Teens welcome.

Katherine Livengood, *Instructor*
SA (1 day) 4/20 10a–1p
\$44 Members \$53 Non-Members
(beginner)



Rachel Reynolds
Painting Instructor

Painting with Mixed-Media

Experiment with new modes of layering paint in various ways, including masking techniques, constructing templates and manipulating transparent mediums. Students will practice applying paint with squeegees and hand-made scraping tools. Whether painting abstractions from imagination or painting representations from a photo-reference, students will inventively explore paint and space.

Rachel Reynolds, *Instructor*
FR (1 day) 4/19 11a–5p
\$90 Members \$108 Non-Members
(beginner, intermediate, advance)

bishop gallery

Join FIA Art School students, faculty, and guests in the Bishop Gallery to view works of art created by students and faculty. Light refreshments will be served.

Sentiment & Method: FIA Student Exhibition

March 4 – March 31
Reception
March 7 • 5p–6:30p

class highlights

Art for the Garden

Many sculptural artists create art for the outdoors. In this class students will learn about the elements of art and artists like Christo, Jeanne Claude, and Robert Smithson. Explore artwork on display at the FIA, create sculptures, wind chimes, birdfeeders, stepping stones, and welcome flags. Materials may include wood, bamboo, steel, fabric, paint, stone, and sea glass.

Karen Sutherland, *Instructor*

SA (6 weeks) 4/6–5/11 1p–3p

\$93 Members \$111 Non-Members
(ages 4–5)

Connect with Clay

Roll, pinch and mold clay! Create exotic animals, masks, tiles and more. Add brightly colored liquid slips and glaze—your artwork will be ready to display!

Michele Gunn, *Instructor*

SA (6 weeks) 3/9–4/20 10a–12p

No Class 4/6

\$117 Members \$135 Non-Members
(ages 6–8)

Natural Science

Illustration: Independent Study

This class is for students who have old projects to finish or new projects to begin. Work in a comfortable atmosphere with other artists who love nature while improving technical and observational skills. Use graphite and/or colored pencil to create accurate, detailed drawings of a favorite subject from nature.

Barbara Holmer, *Instructor*

WE (8 weeks) 3/27–5/15 5:30p–8:30p

\$112 Members \$138 Non-Members
(intermediate, advance)

Drawing: Independent Study

This class is designed for students who have taken a drawing class before or previous drawing experience. Students will find this class an instructionally supportive environment for further development while working on individual projects or optional assigned studies. Projects can be designed according to individual interests.

Alla Dubrovich, *Instructor*

MO (6 weeks) 4/8–5/13 6p–9p

\$86 Members \$105 Non-Members
(intermediate, advance)

youth membership activity

Catching Dreams

April 27 • 1p–4p

Art School Studios

First created in response to ancient stories of northern Ojibwa tribes, dream catchers have become a part of today's popular culture. Learn the legend of the spider woman, discover the history of the Ojibwa in Michigan, and create a traditional vine tear-drop dream catcher.

Free to Youth Members ages 5 to 12 or \$20 fee at door to join membership. To register, please call 810.237.7315.



bray series

Bray Series are made possible by the Viola E. Bray Charitable Trust

Lecture

Strategies of Museum Display

March 11 • 6p

FIA Theater



Guest Lecturer

James Elkins
University of
Michigan-Flint
Winegarden Visiting
Professor

This lecture explores different approaches to displaying and viewing art, from solitary “immersion” to the more “self-reflective” strategies more common in museums.

James Elkins grew up in Ithaca, New York. He stayed in Ithaca long enough to get his BA degree (in English and Art History), with summer hitchhiking trips to Alaska, Mexico, Guatemala, the Caribbean, and Columbia. For the last 25 years he has lived in Chicago; he got a graduate degree in painting, and then switched to Art History, got another graduate degree, and went on to get his PhD in Art History, which he finished in 1989. (All from the University of Chicago.) Since then he has been teaching at the School of the Art Institute of Chicago. He is currently E.C. Chadbourne Chair in the Department of Art History, Theory, and Criticism.

Free to the public.

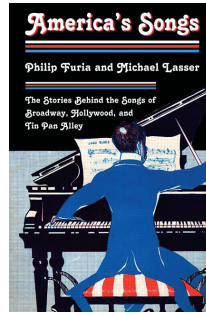
Dinner Theater

“By the Sea, By the Sea, By the Beautiful Sea:” Reflections on Water in American Songs

April 19 • 6p

Isabel Hall

Michael Lasser & Friends



Popular music tries to reach as broad an audience as possible by idealizing the world most of us recognize and inhabit. It tells us that what we believe is worthy and, as a result, it opens a revealing and entertaining window on American attitudes

for the last 150 years.

Works about water reflect a wide variety of attitudes toward their subject, from the picturesque to the industrial. This musical program turns to rivers, ponds, and seas; to sailing and swimming; and also explores water as a setting for love—for romance and sex. The songs range from evocations of alternately languid and passionate tropical paradises to settings for playful flirting in the surf. These songs reflect the dramatic ways in which attitudes toward love and behavior changed in the first half of the 20th century.

\$20 Members

\$30 Non-members

\$15 Senior citizens, students

(18 or under with a valid student ID)

For reservations, contact the Education department at 810.237.7314 or flintartsed@me.com

book discussion

FIA book discussions focus on works of fiction and non-fiction related to art, art museums, or FIA collections.

The Swan Thieves

By Elizabeth Kostova

Part I: Art Lecture

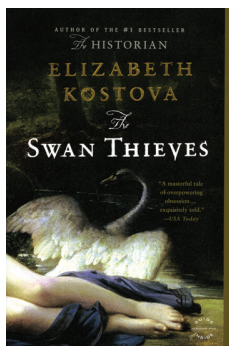
Feb 28 • 7p or Mar 6 • 1:30p

Part II: Book Discussion

Mar 14 • 7p or Mar 20 • 1:30p

Isabel Hall

Andrew Marlow, a psychiatrist, has a perfectly ordered life—solitary, perhaps, but full of devotion to his profession and the painting hobby he loves. This order is destroyed when

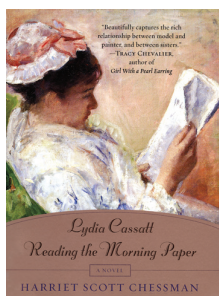


the renowned painter Robert Oliver attacks a canvas in the National Gallery of Art and becomes Marlow's patient.

When Oliver refuses to talk or cooperate, Marlow finds himself going beyond his own legal and ethical boundaries to understand the secret that torments this silent genius, a journey that will lead him into the lives of the women closest to Robert Oliver and toward a tragedy at the heart of French Impressionism.

Our first meeting will set the stage by examining the artists and artworks that inspired this novel. Two weeks later, we'll meet to discuss the book. Books are available in the Museum Shop.

Free to the public.



Lydia Cassatt Reading the Morning Paper: A Novel

By Harriet Scott Chessman

Part I: Art Lecture

Apr 18 • 7p or Apr 24 • 1:30p

Part II: Book Discussion

May 2 • 7p or May 8 • 1:30p

Isabel Hall

Harriet Scott Chessman takes us into the world of Mary Cassatt's early Impressionist paintings through Mary's sister Lydia, whom the author sees as Cassatt's most inspiring muse. Chessman hauntingly brings to life Paris in 1880, with its thriving art world. The novel's subtle power rises out of a sustained inquiry into art's relation to the ragged world of desire and mortality. Ill with Bright's disease and conscious of her approaching death, Lydia contemplates her world narrowing. With the rising emotional tension between the loving sisters, between one who sees and one who is seen, Lydia asks moving questions about love and art's capacity to remember.

Our first meeting will set the stage by examining Mary Cassatt's portraits of her sister. Two weeks later, we'll meet to discuss the book. Books are available in the Museum Shop.

Free to the public.

educator programs

Workshops

Educator workshops are designed for pre-and in-service teachers, home school parents, and volunteers. SB-CEUs are available through the Genesee Intermediate School District and graduate credit is available through the University of Michigan-Flint.

Using The Whole Book Approach

March 9 • 9:45a–4:30p

Lecture Room & Studio 5

The *Whole Book Approach* is an interactive method of sharing picture books that involves the text, art, and design of the book in order to appreciate the book in its entirety. Rosemary Agoglia, Curator of Education at The Eric Carle Museum of Picture Book Art, will introduce participants to the *Whole Book Approach* along with other strategies for using art and illustration in the classroom. .5 SB-CEU • \$75

Animals & the Human Experience

April 20 • 9:45a–4:30p

Lecture Room & Studio 5

This workshop will focus on how animals have been used to explain the unknown, offer guidance in the afterlife, and provide protection and good luck. We will explore a variety of animal sculptures and masks from Central America, Africa, and Asia in the FIA galleries. In the studio, we'll utilize a variety of modeling materials and develop lesson plans to use with students. .5 SB-CEU • \$75

Educator Evening

These professional development gatherings introduce teachers of all grade levels and disciplines to the museum's collections and exhibitions, and include gallery walkthroughs, classroom arts integration tips, and studio activities to use with your students. Dinner is included featuring salad and hot entrée with wine available for purchase and offering networking opportunities with other teachers.

Tried & True Painting Techniques

March 7 • 4:15p–8p

Isabel Hall & Hodge Galleries

Visit the permanent collection galleries and discover how artists have used paint to create realistic and abstract images. After the gallery visit, roll up your sleeves and join the FIA's education staff to explore a variety of painting techniques to use with your students. .3 SB-CEU • \$30

Reflections on Water in American Painting

April 11 • 4:15p–8p

Isabel Hall & Hodge Galleries

Visit the exhibition *Reflections on Water* and trace the maritime and seaside history of America. After the gallery visit, roll up your sleeves and join the FIA's education staff to explore how ideas that inform maritime painting can come alive in your classroom. .3 SB-CEU • \$30

For additional information on Education programming, contact the Education department at 810.237.7314 or flintartsed@me.com

bishop gallery

K–12 Student Exhibition



April 10–28

Reception

April 11
4:30p–6:30p

public program

Slow Art Day

April 27 • 11a-1p

FIA Galleries

Celebrate *Slow Art Day*, a world-wide event designed to spread the joy of looking at art “slowly.” Come to the museum to view five works of art for ten minutes each and then stay for lunch to discuss your experience. Bring your own lunch or purchase something at the café. For more information about *Slow Art Day* visit slowartday.com.



Slow Art Day

art à la carte

Art à la Carte is a series of informative programs focusing on the arts. It is offered free of charge on Wednesdays at 12:15p. Participants are encouraged to bring lunch or pick up something from *The Palette*. Coffee, tea, and cookies are provided. All programs are held in the FIA's Isabel Hall.

March 6

Top Secret Rosies

They were the first “human computers”—female mathematicians, nicknamed for Rosie the Riveter and recruited by the U.S. military to create accurate ballistics tables, refining the precision of Allied bombers in striking World War II targets. Learn the personal stories of four such women who helped bring about Allied victory. *60 min.*

March 13

Louise Bourgeois: The Spider, the Mistress and the Tangerine

In 1982, at the age of 71, Louise Bourgeois became the first woman honored with a major retrospective at the Museum of Modern Art. *99 min.*



Art à la carte is sponsored by:



The Merkley-Elderly
Charitable Trust

March 20

Meinrad Craighead: Praying with Images

Follow the lifelong pilgrimage of visionary artist Meinrad Craighead and her mystical encounters with the Divine Feminine. *59 min.*

March 27

A Portrait of the Artist as an Old(er) Woman

Three octogenarian women artists whose art informs their identity, share their vision and experiences to give us insight into creative energy and vitality that is not hampered by age. *29 min.*

Blackbirds, Bottle Caps & Broken Records: Environmental Artist Bryant Holsenbeck at Work

Bryant Holsenbeck has made her living as an artist for over 30 years. *15 min.*

Louise Bourgeois
American, b. France, 1911–2010
Metamorfosis
aquatint on paper, 1997
20 x 24 inches
Museum purchase, 2007.128

The Romantics

Filmed on location at British and French historical sites, this three-part series (April 3, 10, & 17) delves into the art, literature, and politics of 18th- and 19th-century Europe—telling the tumultuous story of Romanticism and its reshaping of Western culture.

April 3

From Revolution to Nature

This program illustrates the political and cultural roots of the movement. *60 min.*

April 10

From Nature to Transcendence

This program analyzes the Romantic fascination and identification with the power of the natural world. *60 min.*

April 17

From Transcendence to Oblivion

This program examines attempts by Romantic poets to transcend the physical world and expand the limits of human imagination. *60 min.*

April 24

Downside UP

A film by Nancy Kelly. *Downside UP* captures the beginnings of America's largest museum of contemporary art, MASS MoCA (Massachusetts Museum of Contemporary Art) and the rebirth of its host-city, North Adams. *56 min*

**For additional information
on Education programming,
contact the Education
Department at 810.237.7314
or flintartsed@me.com**

Membership contributions are a significant part of the Flint Institute of Arts operating income.

Levels

Youth (2.5–12)	\$20
Student (13 to college)	\$20
Individual	\$30
Dual [†]	\$40
Family ^{††}	\$50
Sustainer ^{††}	\$100
Sponsor ^{††}	\$250
Donor ^{††}	\$500
Rubens Society ^{††}	\$1,000+

† 2 adults

†† 2 adults + children 18 & under

* An asterisk indicates the names of those who have upgraded their memberships with a larger contribution.

+ A plus indicates the names of Friends of Modern Art (FOMA) members.

Δ A triangle indicates the names of Founders Society members.

The following are members who have renewed from 11.9.12 – 1.9.13

Rubens Society (\$1,000 & above annually)

Corporate

Big John Steak & Onion, Inc.
Citizens Bank
Hubbard Supply Co.
Main Manufacturing Products

Individual

Dr. & Mrs. Daniel Anbe+Δ
Mrs. Beverly Bernard
Mr. & Mrs. Robert L. Bessert+Δ
Mr. Donald Davenport*
Mr. & Mrs. Harry L. Eiferle, Jr.+Δ
Mr. Robert F. Enders
Mr. & Mrs. Neal Hegarty
Mr. & Mrs. Richard C. Hockstad
Mrs. Bess Hurand+Δ
Mr. & Mrs. Gary J. Hurand+Δ
Ms. Lynne Hurand+Δ
Mr. Donald E. Johnson, Jr.
Dr. Benjamin E. & Estelle Kaufman
Mr. & Mrs. Raymond J. Kelly III
Mrs. Harriet B. Kenworthy*
Mrs. Nancy Kleinpell
Albert & Barbara Koegel+Δ
Mr. & Mrs. Stephen S. Landaal
Mrs. Virginia R. Landaal
Prosecutor David & Therese Leyton
Mr. & Mrs. John Lindholm
Dr. & Mrs. Alan L. Morgan
Mrs. Brad & Linda Murphy
Edward & Elizabeth Neithercut
Mr. & Mrs. Jay Nelson
Mr. Randolph P. Piper & Mrs. Susan I. Stuewer+Δ
Mr. Robert S. Piper+
Mrs. Fouad Rabiah+
Mr. & Mrs. Jeffrey D. Rocco+
Mr. & Mrs. Timothy C. Sanford
Dr. & Mrs. Paul E. Schroeder+Δ
Dr. D. J. Trela & Dr. David Bailey+Δ
Mr. & Mrs. James Truesdell, Jr.
Dr. & Mrs. Frederick VanDuyne
Mr. & Mrs. Dean Yeotis+

Corporate Members

Corporate Supporter

(\$250 annually)

Piper Realty Company*

Corporate Sustainer

(\$100 annually)

Great Lakes Legal Team, PLC
Greater Flint Chapter of the
Pierians, Inc.
Vogt's Flowers

Individual Members

Donor

(\$500 annually)

Mr. & Mrs. Richard H. Kraft+
Mr. & Mrs. David S. McCredie
Mr. & Mrs. William Peterson*
Mr. & Mrs. Lawrence F. Piper
Mr. & Mrs. J. Parkhill Smith+
Ms. Bernie B. Wentworth

Sponsor

(\$250 annually)

Dr. & Mrs. William M. Bernard+
Mr. & Mrs. Michael Bourke
Ms. Melba R. Clapp+Δ
Greg & Karen Eason
Mr. & Mrs. Joseph F. Foos+
Mr. & Mrs. Wayne W. Knecht*+
Mr. & Mrs. Frederick L. Kump
Mr. & Mrs. James Nicolai
Mr. & Mrs. Michael J. Riha+Δ
Dr. & Mrs. Milton J. Siegel+Δ

Sustainer

(\$100 annually)

Ms. Leslie Acevedo
Dr. & Mrs. Mehmet Agabigum*+
Mrs. Pauline C. Angle
Mr. & Mrs. Peter M. Bade
Mr. David J. BarkeyΔ
Dr. & Mrs. William D. Beck &
Kristen
Mr. & Mrs. Bob Bennett*+Δ
Ms. Jane M. Bingham+Δ
Mr. & Ms. Roger H. Brown+Δ
Mr. & Mrs. Tom E. Butts+
Ms. Peggy Campbell
Mr. & Mrs. Adam Carlson
Mr. & Mrs. William J. Churchill
Dr. & Mrs. Frank W. Cook*
Mr. & Mrs. Daniel Cruz*
Mr. & Mrs. Wm. Stefan
Davidek+Δ
Ms. Dorothy Gae Davis

Mr. & Mrs. Carl A. Diener+
Mr. & Mrs. James C. DillardΔ
Mr. & Mrs. Robert F. Duedeke
Ms. Kathleen George+Δ
Mr. & Mrs. Christopher Giroux
Mr. & Mrs. Tom Gisewhite+Δ
Mr. & Mrs. Melvin E. Gregory
Dr. & Mrs. Edwin H. Gullekson
Dr. & Mrs. Robert Hahn
Mr. Gary Hankinson*
Mr. & Mrs. Richard S. Harris+Δ
Mr. & Mrs. Ronald J. HartmanΔ
Mr. Robert Hill & Mr. Steven R.
Hill
Ms. Barbara Holmer & Mr. Robert
Stanisch*
Mrs. Martha B. Hopkins
Mr. & Mrs. Francis Hudson+
Mr. & Mrs. Fred Huntzicker
Dr. & Mrs. John S. Isaac
Mr. & Mrs. Ken Kaiser*
Mr. & Mrs. Richard Kalush*
Mr. & Mrs. Dale E. Kildee
Mr. & Mrs. Norman Kleiner*
Mr. & Mrs. Jim Kolhoff+Δ
Mr. & Mrs. Stephen Larzelere-
Kellermann+Δ
Stephen & Kathleen Leist+
Mrs. Juldeen Lemke
Mr. & Mrs. Tom Lillie+
Mr. & Mrs. David E. Lossing+Δ
Mr. Donald E. Lovejoy+
Ms. Susan Marlow*
Ms. Yvette Massenberg*
Mr. & Mrs. Brad McFaul
Mr. & Mrs. David C. Miller
Mrs. Helen G. Millhouse
Mr. & Mrs. Edward A. Mitchell
Mr. Thomas Mitchell*Δ
Mr. & Mrs. David Owen-Smith
Ms. Carole A. Pappas+
Dr. & Mrs. Edward Parish+
Ms. Nanette Pearson & Mr. Kirby
Milton
Ms. Patti Perkins
Mr. & Mrs. Eric Petersen+Δ
Dr. & Mrs. Frederick P. Pike+
Mr. & Mrs. Dudley Place+
Dr. & Mrs. Mark Plucer+Δ
Dr. & Mrs. George D. Politis+
Mr. & Mrs. Robert Pounds+
Betty & Richard Ramsdell
Judge & Mrs. Robert M.
Ransom+
Kelly & Lois Revenaugh
Mr. & Mrs. James P. Ricker
Mr. & Mrs. Ralph R. Rossell+
Mr. & Mrs. Ronald E. Royer
Mrs. Geraldine Rudduck

Richard & Katherine Saunders
Mr. & Mrs. Peter Schoenherr+Δ
Mr. & Mrs. Edwin Schreiber
Mr. & Mrs. Howard S. Schultz+Δ
Mr. & Mrs. Curtis Seibert
Mr. & Mrs. Leo Seide+Δ
Mr. & Mrs. Robert L. Shegos
Mr. & Mrs. A. Ronald Sirna+
Mr. & Mrs. Paul Smyth
Ms. Shelley R. Spivack
Miss Barbara Stewart
Mr. & Mrs. Michael D. Thompson
Dr. & Mrs. Allen F. Turcke*
Mr. & Mrs. William Vredevoogd
Prof. Mitchell S. Weiss+Δ
Ms. Ruth Winter & Mr. Tom
Thibault*
Mr. Dale F. Wolfgram*+
Mr. & Mrs. Robert A. Wood
Ms. Marta Wyngaard-Tavakoli

Family

(\$50 annually)

Mr. & Mrs. Robert A. Ackerman+
Ms. Velma Adams
Rex Alexander, Rochelle & Jillian
Molyneaux
Mr. & Mrs. Ricardo Alfaro
Clyde & Georgie Allard
Mr. & Mrs. Kenneth G. Aurand+
Mr. & Mrs. Calvin Baker
Mrs. Rosemary Bigelow
Mr. & Mrs. Dean Bonesteel
Mrs. Patricia Boyd
Mr. & Mrs. David S. Boze
Mr. & Mrs. John C. Briggs+
Mr. & Mrs. Kelly J. Brisbin
Mr. & Mrs. Stan Byk
Mr. Joseph Coriaty
Mrs. Cheri Dickinson
Mrs. Carol Egloff+Δ
David & Jill Esau
Mr. Richard W. Fortner+Δ
Mr. & Mrs. Sylvester Gajewski
Mr. & Mrs. Roger Gilmour+
Mr. & Mrs. Raymond Gorton
Mr. & Mrs. Gordon Grandy*+
Mr. & Mrs. Kent Greenfelder
Mr. & Mrs. Timothy Gundlach+Δ
Mr. & Mrs. Lawrence Hackett
Ms. Vikki Bayeh Haley
Mr. & Mrs. Nick Hamers
Mr. & Mrs. Carl Hansen+
Mr. & Mrs. Arthur S. Hesse, Jr.+
Dr. & Mrs. Huseyin R. Hiziroglu+Δ
Peter & Gail Hutchison
Mr. & Mrs. Robert E. Iden
Mrs. Laura Karle & Miss Madeline
Karle+

Mrs. Mechelle Kuchar
 Mr. & Mrs. Wade Laine
 Ms. Mary Larson & Mr. Dan Cole
 Mr. & Mrs. Fred Luten
 Fr. Steve Makranyi+Δ
 Mr. & Mrs. Michael A. Mason+
 Mrs. Melissa Maxwell-Cook &
 Mr. Lonnie Maxwell-Cook
 Dr. & Mrs. Gordon McClimans
 Mr. Jeff McClintock*
 Mr. & Mrs. Larry McDonough+Δ
 Mr. Stephen Miller & Ms. Jeana
 Rossie-Miller
 Mr. & Mrs. Robert J. Miner*
 Mr. & Mrs. Andrew Molnar
 Mr. Denver Morris & Ms. Diane L.
 Boegner+
 Mr. & Mrs. Denis NeumannΔ
 Mr. & Mrs. Richard C. Noble
 Mr. & Mrs. Tom R. Pabst
 Mr. Robert Palter
 Mr. & Mrs. Carl Peterson
 Ms. Mary Powell*+
 Dr. & Mrs. Lawrence Reynolds*+
 Mr. & Mrs. John L. Riegler, Jr.
 Dr. & Mrs. Harvey Ring
 Mr. & Mrs. Robert T. Robison*
 Mr. & Mrs. Brian Royce*+
 Mr. & Mrs. Walter Russ
 Mr. & Mrs. Frank A. Sanders
 Ms. Martha Shaver
 Mr. & Mrs. Daniel Smith+
 Mr. Michael Sprague & Dr. Janet
 Sprague
 Mr. & Mrs. Tarakji & Family

Dual

(\$40 annually)
 Ms. Kay Adams*+
 Mr. & Mrs. John Baker
 Gary & Maureen Bates+
 Mr. & Mrs. John Bradley
 Mr. & Mrs. John A. Brancheau
 Mr. & Mrs. David Coburn+
 Mr. & Mrs. Sylvester Collins+
 Virgil & Sheryl Cope+
 Mr. & Mrs. Gary Cox
 Mr. & Mrs. John H. Crawford+
 Mr. & Mrs. Norm Dickenson
 Mrs. Carol Dickinson*
 Mr. Michael Flives+
 Mr. Leroy Flint & Ms. Frederica
 E. Muller
 Dr. Debra A. Golden-Steinman &
 Mr. Harold V. Steinman+Δ
 Mr. & Mrs. Anthony A. Hanak+Δ
 Mr. & Mrs. R.J. Harmon
 Mr. & Mrs. Theodore S.
 Himelhoch

Mr. & Mrs. Michael HintermanΔ
 Dr. David M. Johnston+
 Dr. & Mrs. Paul LafiaΔ
 Mr. & Mrs. Lee LaVictoire+
 Mr. David T. Lindsey &
 Mrs. Jeanette Lindsey+
 Mr. & Mrs. Steven Low+
 Dr. & Mrs. Jack McLaugh
 Mr. & Mrs. Robert W. Ranta+
 Ms. Evelyn Raskin & Mr. James
 Hilty
 Mr. & Mrs. Brian Renaud
 Mr. & Mrs. Melvyn R. Rettenmund
 Mr. & Mrs. Paul Rozycki+Δ
 Mr. & Mrs. Clinton Sampson
 Mrs. Trudi Schreiber+
 Mr. & Mrs. Tim Seaman*
 Mr. & Mrs. Norm Stewart
 Mr. & Mrs. Edward Strong
 George & Jean Toth+
 Mr. & Mrs. Robert Tucker
 Rev. Tom & Mrs. Beth
 Wachterhauser+
 Mr. & Mrs. Gerald L. Walters
 Mr. & Mrs. William White*

Individual

(\$30 annually)
 Mrs. Susan Alarie
 Ms. Shirley Bannatyne
 Ms. Kimberly A. Bodette
 Mrs. Carole A. Brender+
 Ms. Martha Calhoun
 Ms. Mary L. Christian
 Mrs. Avis Christie+Δ
 Mr. Justin Clanton
 Mrs. Jeanne ClarkΔ
 Miss Anne Cole
 Mrs. Bernadette Collie
 Ms. Gail M. Curry
 Mr. Edwin D. Custer
 Mrs. Kathy L. Dotson
 Ms. Geraldine Erwin
 Ms. Patricia A. Falerios
 Judge Joseph J. Farah
 Ms. Elaine Flore
 Dr. Colleen Ford
 Ms. Julie Ford
 Ms. Virginia Gaffney+
 Mr. Jeff Garrett
 Ms. Mary L. Grossklaus+
 Mrs. Annie Guevara+
 Ms. Jaclyn Hatcher
 Mrs. Barbara G. Hayes
 Ms. Carole D. Hecker
 Mrs. Gloria A. Hines
 Mr. Sidney Horton Jr.
 Ms. Carol Houser
 Dr. John A. Howland
 Mrs. Susan Hungerford
 Miss Esther M. Jacob+
 Mrs. Rita MacGregor Jeric
 Mr. Robert V. Jewell
 Mrs. Nancy Kirby
 Mr. Stephen Kober
 Mr. Timothy Kranz
 Ms. Jane A. Kravetz
 Ms. JoEllen Larzele
 Ms. Sheena Law
 Ms. Andrea LeGendre
 Mrs. Linda Lewellyn
 Mrs. Kimberly Mancillas
 Mr. Aron McCormick+
 Ms. Rebecca McLogan
 Mr. Herb Merrell+
 Ms. Jill Michelle
 Mrs. Linda Midler+Δ
 Ms. Kathleen Moore
 Ms. Kate Nickels*
 Mrs. Marsha L. Ochodnický
 Mrs. Karan A. Pinkston
 Mr. Harry S. Preston
 Mrs. Denise L. Procuier
 Ms. Barbara Reehl
 Mr. Danny Reynolds
 Ms. Connie Reynolds
 Miss Linda Romanow
 Mr. William Salo
 Mrs. Joan Sauter
 Mr. Ronald J. Schmitz
 Ms. Jacqueline Scott+Δ
 Ms. Kimberly Sharpe
 Ms. Pam Shaw
 Mr. David Smallidge+
 Ms. Deborah Snow
 Mrs. Mary Sprague
 Mrs. Kathryn Stack
 Mr. Paul Stirling
 Ms. Virginia Sullivan
 Mr. David Tait
 Mrs. Pamela TerBush
 Ms. Mary Vojdik+
 Ms. Kimberly Wilcox+Δ
 Mrs. Heather Wright
 Ms. Veronica Wroblewski
 Mr. Theodore T. Zahrfeld+Δ

Student

(\$20 annually)
 Mr. Joel Arnold
 Ms. Violet Freeland
 Mrs. Jacqueline O. Weaver

Youth

(\$20 annually)
 Sarah Rabiah Harmon
 William Rabiah Harmon
 Gabrielle Landsgaard

Mark Tolbert II
Sydney Webster

College Town

(as of 2.5.13)

Baker College

84 members

Kettering University

126 members

Mott Community College

835 members

University of Michigan-Flint

590 members

The following are members who have joined from

11.9.12 – 1.9.13

Individual Members

Sponsor

(\$250 annually)

Dr. Teri Sexton

Mr. & Mrs. Alan Weamer

Sustainer

(\$100 annually)

Mr. & Mrs. Robert GarrisonΔ

Mrs. Bella Kritz-Doebeli

Dr. & Mrs. Gary Lange

Mr. Mark E. Neithercut

Mr. Paul Zoltowski

Family

(\$50 annually)

Ms. Belen Connelly

Mr. & Mrs. Christopher Estes

Mrs. Valorie Hoppe

Mr. & Mrs. Jeff JohnstonΔ

Ms. Bethany Klein

Mrs. Elizabeth McCreedy

MLive Media Group

Mrs. Tonya K. Muhammad

Mr. & Mrs. Travis Nuffer

Ms. Alissa Parks+

Mr. & Mrs. David Taylor

Mrs. Jeannine Upton

Dual

(\$40 annually)

Mr. Wayne Barber & Mr. Rich Fitz

Ms. Deirdra Bezemek &

Mr. Daniel Rodriguez

Mr. & Mrs. Carl Brandt+

Kearby & Jan Burgess

Ms. Brittney Jackson

Mrs. Diana M. Koviack

Mr. & Mrs. Richard Lutgens+

Mr. Roger McGuffin

Ms. Doris McGuffin

Mr. & Mrs. Jim Miller

Mr. & Mrs. Richard Reed+

Ms. Heather Rousseau &

Mr. Mark Silva

Mr. & Mrs. Nathaniel Ruth

Mr. Bruce Taylor

Ms. Regina Vining

Mr. & Mrs. Brad Winther

Ms. Yedan Yin & Mr. Shane Trese

Individual

(\$30 annually)

Dr. Jason Arant

Ms. Elaine Balok

Ms. Mary Ann Boyd

Ms. Sharon Cooper+Δ

Mrs. Elaine DeCou

Ms. Jeanna Gooch

Ms. Kerri Goodman

Ms. Jenny Guarins

Ms. Susan Hardisty

Ms. Delores Harrower

Ms. Susan E. Hendrickson

Mrs. Linda Jaworski

Ms. Zuzana S. Kaplanova

Mrs. Elizabeth Kupsis

Ms. Trish Lewis

Mr. Matt McIlroy

Mrs. Charlene Miller

Ms. Laurie Nagy

Mr. Christopher R. Odette

Mr. Will Petteys

Mr. Glen Allen Pruett

Mrs. Christine Refice

Ms. Cynthia Robson+

Ms. Cherlyn Satkowiak

Mr. Gary Smith+

Ms. Heidi Solomon

Ms. Katharine D. Weaver

Mr. Tom Williams

Student

(\$20 annually)

Miss Anastasia Goldyn

Youth

(\$20 annually)

Catherine Fox

Owen Kleeman

Katherine Lengyel

thank you

The Flint Institute of Arts gratefully acknowledges the generosity of the following donors who have supported the Institute with contributions.

The following are gifts received from 11.9.12 – 1.9.13

Endowment Gifts

Foundation Gifts

Anonymous

Individual Gifts

Ms. Diana Cavett
Mr. James R. Chintyan
Dr. Jamile T. Lawand & Mr. Barry J. Carr
Mr. & Mrs. Joseph Marconi
Ms. Carol Masse

Special Gifts

Purchased the Gift of an FIA Membership

Ms. Cheryl Braysher for Aron McCormick
Ms. Martha Chaltraw for Belen Connelly
Ms. Patricia Gage & Mr. Bill McKay for Richard & Marsha Reed
Ms. Patricia Gage & Mr. Bill McKay for Cynthia Robson
Ms. Kathleen George for Kathleen Moore
Ms. Janet Hiles for Deirdra Bezemek & Daniel Rodriguez
Dr. Benjamin E. & Estelle Kaufman for Prosecutor David & Therese Leyton
Mr. Connor Kelly for Virginia Gaffney
Mr. & Mrs. Stephen Larzelere-Kellermann for JoEllen Larzelere
Mr. Tom Mahard for Glen Allen Pruett
Mr. Roger McGuffin for Doris McGuffin
Mrs. Shirley Mitchell for Charlene Miller
Mrs. Fouad Rabiah for William Rabiah Harmon & Sarah Rabiah Harmon
Mrs. Sharon Rickard for Wade & Kim Laine
Ms. Cherlyn Satkowiak for Jeanna Gooch
Ms. Cherlyn Satkowiak for Susan Marlow
Mr. Bryan Smith for Gary Smith
Mr. Michael Sprague & Dr. Janet Sprague for Mary Sprague
Ms. Tracy Warren for Matt McIlroy

To benefit the General Operating Fund

Charles Stewart Mott Foundation
Mr. Robert Jacobs
Grant from the Peter D. and Nancy P. Kleinpell Family Fund of the Community Foundation of Greater Flint

Trustee-initiated Grant to benefit the Permanent Collection Fund
Mr. William S. White

Matching Gift to benefit the Permanent Collection Fund
Charles Stewart Mott Foundation

Trustee-Initiated Grant to benefit the Art School Administration
Mrs. Claire White

Matching Gift to benefit the Art School Administration
Charles Stewart Mott Foundation

Grant to benefit the exhibition *Winfred Rembert: Amazing Grace*
Community Impact Fund and from an anonymous donor of the Community Foundation of Greater Flint

Grant to benefit Early Education Programs
PNC Foundation

Matching Gift to benefit the Annual Appeal - Endowment
Charles Stewart Mott Foundation

Matching Gift to benefit the Film Society
Charles Stewart Mott Foundation

Sponsor of The Party 2013
Dean & Lynda Yeotis

To benefit the Expansion of the Welding Lab
Anonymous

To benefit the Lighting
Jay & Marilyn Nelson of the Nelson Family Foundation

To benefit the Pre-College Portfolio Development Program
Sud Family Foundation

To benefit the Art School Building Fund
Ms. Susan E. Thompson

To benefit the Roof Restoration Fund

Dr. & Mrs. Kienan F. Murphy

Additional Sponsors of Art on Tap 2012
Raymond James Financial, Inc.
Thomas Townsend
Townsend Morgan Group/UBS Financial Svcs

Additional Sponsors of Community Gala 2012-13
Baker College Center for Graduate Studies
Mrs. Edmund Brownell
Davenport University
Hamilton Community Health Network
Samuel & Graciela Harris
Ms. Lynne Hurand
Ms. Kathryn Koegel
Loving Hands, Inc.
Dr. & Mrs. Kienan F. Murphy
Ms. Gail Buckner Odom
United Way of Genesee County
University of Michigan-Flint, College of Arts & Sciences
Dean & Lynda Yeotis

Sponsor of the exhibition *Reflections on Water in American Painting: The Phelan Collection*
Citizens Bank

Memorials

In memory of Dr. Richard E. Cunningham to benefit the Annual Appeal
Mrs. Nancy J. Cunningham

In memory of Milton F. Darr to benefit the Annual Appeal
Ms. Elizabeth DuMouchelle & Mr. Leonard F. Chari

In memory of Dr. John F. Egloff
Patricia Ellingson
Gary & Phyllis Huffman
Ed & Susie Skrelunas

In memory of Dr. J. J. Gutow & Howard Gutow to benefit the Annual Appeal
Mrs. Julius Gutow

In memory of Mary Alice Heaton
Mrs. Rosemary R. DeCamp
Falding B. Gadola
Mr. & Mrs. John B. Henry III
Kathryn Sharbaugh

In memory of Arthur Hurand
M. G. Simon Properties - Marge Simon, Jerome & Jill Fine

In memory of Michael Stanley
Chuck & Kathryn Sharbaugh

In memory of Kenneth & Esther Wiles to benefit the Annual Appeal
Judith M. & Robert J. Irwin II



John Henry accepts a check from Gregory Viener, President of Commercial Banking and Thomas Mitchell, Senior Vice President of Citizens Bank for sponsorship of *Reflections on Water in American Painting: The Phelan Collection*.

In Honor

In honor of Mr. & Mrs. Richard Baks, Mr. & Mrs. John B. Henry III, Mrs. Bess Hurand, Mr. & Mrs. Gary Hurand, Ms. Denise Morgan Anonymus

In honor of Audrey McDonough Mr. Thomas McDonough

In honor of Robert Piper's 70th birthday - to benefit the Piper Print Gallery
Mr. & Mrs. David F. Barbour

Additional Film Society Members 2012-13

Mr. & Mrs. Robert Gardner

Additional Print Society Members 2012-13

Mrs. Kandice Andrews
Mr. & Mrs. Michael J. Behm
Mr. & Mrs. Robert L. Bessert
Mr. & Mrs. Ryan & Tracy Bessert
Mr. & Mrs. Dean Bonesteel
Mr. Joseph Coriaty
Mr. Thomas M. Gervasi
Mr. & Mrs. Richard S. Harris
Mr. & Mrs. Neal Hegarty
Mr. & Mrs. John Kopp
Dr. Jamile T. Lawand & Mr. Barry J. Carr
Mr. Michael Martin & Mr. Bryan Paris
Mr. & Mrs. Robert W. Myers
Mr. Robert Palter
Mr. & Mrs. Brian Renaud

Additional Annual Appeal Gifts

Anonymous
Mr. & Mrs. Kenneth G. Aurand
Mr. & Mrs. Richard P. Baks
Mr. & Mrs. Kelly B. Beardslee

Dr. & Mrs. William D. Beck & Kristen
Dr. Morley M. Biesman
Ms. Jane M. Bingham
Ms. Jane M. Bingham
Ms. Susan Steiner Bolhouse
Mrs. Edmund Brownell
Ms. Ginanne Brownell
Mr. & Mrs. Tom E. Butts
Ms. Sally Case
Mr. & Mrs. James Cherry
Mr. Bryan Christie
Ms. Melba R. Clapp
Mr. & Mrs. Robert Courneya
Mrs. Nancy M. Cronin
Mrs. Nancy J. Cunningham
Ms. Gail M. Curry
Mr. Robert L. Daly
Mr. & Mrs. Wm. Stefan Davidek
Ms. Jeanne Dobes
Mr. James & Dr. Carol Dowsett
Ms. Elizabeth DuMouchelle & Mr. Leonard F. Charia
Mr. & Mrs. Harry L. Eiferle, Jr.
Mrs. Loretta C. Ellwood
Ms. Gisele Farah
Mr. William Farmer
Mr. Michael Fives
Mr. Richard W. Fortner
Mrs. Florence J. Fugenschuh
Dr. & Mrs. Scott A. Garner
Mr. Jeff Garrett
Ms. Lee Giacalone
Mr. & Mrs. Dennis Gilbert
Mr. Anthony Gittens
Ms. Tracee Glab
Jeanne & Ralph Graham
Ms. Regan Guevara
Mrs. Julius Gutow
Dennis & June Haley
Ingrid Halling
Mr. Gary Hankinson
Ms. Janice T. Harden
Mr. & Mrs. Daniel Harrett
Mr. & Mrs. Joel H. Harris
Samuel & Graciela Harris
Mrs. James Hastings
Mr. & Mrs. Terry Henry
Mrs. Ermie Hermann
Dr. & Mrs. John V. Hinterman
Mrs. Susan Hungerford
Ms. Lynne Hurand
Mr. & Mrs. Christopher Iden
Judith M. & Robert J. Irwin II
Ms. Heather Jackson
Mr. & Mrs. Mark Jacobson
Ms. Jane M. Johnson

Mr. Johnnie Jones
Dr. Benjamin E. & Estelle Kauffman
Mrs. Nancy Kirby
Dr. Alan Klein
Mr. & Mrs. Norman Kleiner
Mr. & Mrs. Frederick L. Kump
Rev. Reginald V. Lancaster & Dr. Karen R. Wilkinson
Mrs. Dawn Laturneau
Dr. & Mrs. Paul Lauber
Mr. & Mrs. James Lay
Mr. Max Lepler & Mr. Rex L. Dotson
Prosecutor David & Therese Leyton
Mr. & Mrs. Tom Lillie
Mr. & Mrs. Glenn Lysinger
Ms. Jeanette R. Mansour & Mr. Joe Green
Dr. & Mrs. Berton J. Mathias
Mr. Donald McCombs
Mr. & Mrs. Ted Meadors
Mr. & Mrs. Robert D. Mills
Mrs. Sally J. Moss
Mr. & Mrs. Michael Munger
Mr. & Mrs. Alexander C. Murray
Ms. Sharon Y. Naughton
Mr. & Mrs. James Nicolai
Mr. Don Olmsted
Mr. & Mrs. Ronald Oskey
Mr. & Mrs. John Pavlis
Mrs. Karan A. Pinkston
Dr. & Mrs. W. Archibald Piper
Mrs. Stella Poulos
Mr. John S. Pryor
Ms. Ann Richards
Mr. & Mrs. John L. Riegler, Jr.
Mr. & Mrs. Michael J. Riha
Ms. Pat Robinson
Dr. & Mrs. Paul Roetter
Mr. Scott Romanowski
Mr. & Mrs. George Rosenberger
Mrs. Michael & Virginia Rucks
Mrs. Ellajane S. Rundles
Mr. & Mrs. Khalil M. Saab
Ms. Sherren Sandy & Family
Mrs. Miriam S. Schaffer
Mrs. Trudi Schreiber
Dr. & Mrs. Paul E. Schroeder
Mr. & Mrs. Howard S. Schultz
Mr. & Mrs. Howard S. Shand
Mr. & Mrs. George Skaff
Dr. Ernestine R. Smith
Mr. & Mrs. Worley Smith
Mr. & Mrs. J. Parkhill Smith
Ms. Shelley R. Spivack

- Mrs. Emma Lou St. Onge
 Mr. Martin Stefan
 Shirley A. Stevens & Bob
 Tresedder
 Mrs. Sally Stevens
 Miss Barbara Stewart
 Mr. Paul Stirling
 Mr. & Mrs. William R. Stolpin
 Dr. & Mrs. Thomas Svitkovich
 Mr. David Tait
 Mr. Billy Traylor
 Mr. & Mrs. Glenn Tripp
 Dr. & Mrs. Frederick VanDuyne
 Mr. & Mrs. Robert J. VanDuyne
 Mr. & Mrs. Aldo Vrh
 Mr. David Walters
 Ms. Lahna Ward
 Ms. Kathleen A. Weiss
 Ms. Barnie B. Wentworth
 Dr. & Mrs. Jay A. Werschky
 Dr. & Mrs. James Williams
 Mr. Gabriel Wilson
 Mr. Michael Wilson
 Ms. Ruth Winter & Mr. Tom
 Thibault
 Dr. Sue Wisenberg & Ms. Donna
 Baker
 Dean & Lynda Yeotis
 Judge & Mrs. Thomas C. Yeotis
 Dr. & Mrs. George Zureikat
**Gift by Dr. David Taylor, Dr.
 Shawn Reiser, & Dr. Dean Singer
 of the Community Podiatry
 Group, P.C. in honor of:**
 Wafa Abbud, M.D.
 Ahmad Abdel-Halim, M.D.
 Mehmet Agabigum, M.D.
 Hindi Ahmed, M.D.
 Indira Alluru, M.D.
 Duane Allyn, D.O.
 Larry Alton, D.O.
 Evelyn Alumit, M.D.
 Jonathan Abrogast, M.D.
 Rommel Aquino, M.D.
 Pauline Aquino, M.D.
 Hatem Ataya, M.D.
 Ghassan Bachuwa, M.D.
 Brian Beck, D.O.
 Donna Benford, D.O.
 Douglas Benton, D.O.
 Regis Benton Jr., D.O.
 Seth Bernard, D.O.
 William Bernard, D.O.
 Jagdish Bhagat, M.D.
 Brian Bhagat, M.D.
 Amy Blaising-Wallace, D.O.
 Marta Bonkowski, M.D.
 Jeffrey Bossenberger, M.D.
 David Brandreth, D.P.M.
 Larry Braver, D.O.
 Kelvin Callaway, M.D.
 Eugene Chardoul, M.D.
 Patrick Chang, M.D.
 David Charles, D.O.
 Soon Choi, M.D.
 Stanley Conhon, M.D.
 John Commet, D.O.
 Ronald Coriasso, D.O.
 Riad Dali-Ahmad, M.D.
 E.J. Daros, D.O.
 Antony Daros, D.O.
 Ernesto Duterte, M.D.
 Myriam Edwards, M.D.
 Delia Ebuena-Mercado, M.D.
 Hytham Fadl, M.D.
 Jodi Flanders, D.O.
 Abeer Fayyad, M.D.
 Brenda Fortunate, D.O.
 Kenneth Ganapini, D.O.
 Mary Ghalib, M.D.
 Edward Gomez-Seoane, M.D.
 Kazem Hak, M.D.
 Donald Hardman, M.D.
 Stephen Harrison, D.O.
 Christopher Harrison, D.O.
 Kim C. Hendricks, M.D.
 Milton Holloway, M.D.
 Cynthia Horning, M.D.
 Bill Hukill, D.O.
 Chris Iacobelli, M.D.
 Alicia Imperial, M.D.
 Larry Kage, D.O.
 Rachel Kasperowicz, M.D.
 Jitendra Katneni, M.D.
 Parmanand Khandelwal, M.D.
 Gary King, M.D.
 Kinran, Kinra, M.D.
 Naresh Kinra, M.D.
 Samasandrapalya Kiran, M.D.
 Prasad Kommareddi, M.D.
 Renee Krusniak, D.O.
 Kathleen Kudray, D.O.
 Nita Kulkarni, M.D.
 Wendy Lawton, M.D.
 Dennis Lloyd, D.O.
 Henry Mendoza, M.D.
 Aram Minasian, M.D.
 Usha Modi, M.D.
 Shaheen Mohammed, M.D.
 Bobby Mukkamala, M.D.
 Kienan Murphy, D.O.
 Gerald Natke Jr., M.D.
 Steven Neirink, D.P.M.
 Mark Neumann, D.O.
 Linda Norrell, M.D.
 Damayanthi Pandrangi, M.D.
 D.V. Pasupuleti, M.D.
 Ravikumar Peddireddy, D.O.
 Miguel Perez Pascual, M.D.
 Mona Perry, M.D.
 Ariel Ponce, D.O.
 Abdullah Raffee, M.D.
 Rama Rao, M.D.
 Sridhar Rao, M.D.
 Harvey Ring, D.O.
 Abdallah Rizk, M.D.
 Paral Sud, M.D.
 Elmahdi Saeed, M.D.
 Saed Sahouri, M.D.
 Sarah Sanchez, M.D.
 Rajalakshmi Sankaran, M.D.
 Ashish Sarin, M.D.
 Syed Sattar, M.D.
 Bhagwan Sayal, M.D.
 Byron Schoolfield, M.D.
 David Schwarz, M.D.
 Silva Seoane, M.D.
 Ronald Shaheen, D.O.
 Theresa Sherman, M.D.
 Thomas Shuster, D.O.
 Joseoh Simmert, D.O.
 Gary Smothers, D.O.
 Dirk Snyder, M.D.
 Kevin Snyder, D.O.
 Kenneth Steibel, M.D.
 Tommy Stevens, M.D.
 John Stoker, D.O.
 Randall Sturm, M.D.
 Nilfer Sumer, M.D.
 Rajakumari Swamy, M.D.
 Brad Sweda, M.D.
 Mohammed Syed, M.D.
 Allen Trager, D.O.
 Frederick VanDuyne, M.D.
 Koteswara Vermuri, M.D.
 Sasikala Vemuri, M.D.
 Carol Voremkamp-Cooper, D.O.
 Melinda Wheatley, M.D.
 Carol Wyse, D.O.
 Kenneth Yokosawa, M.D.
 Michael Young, D.O.
 Michael Ziccardi, D.O.
 CORA Rehabilitation Clinics
 Genesys Wound & Hyperbaric
 Center
 Michigan Vascular Center
 Surgery Center of Flint

art sales & rental gallery

March/April Featured Artist

Sonya Persia

Artist Reception

March 3 • 1p–3p

Glacier Bed
36 x 48 inches



Artistic from a young age, Sonya Persia studied art throughout her education, ultimately receiving her BFA from the University of Michigan.

She has exhibited in galleries and museums locally and in California including the Saginaw Art Museum, the Greater Flint Arts Council Gallery, Buckham Gallery, Harding Mott University Center Art Gallery, the Michigan League in Ann Arbor, San Diego Art Institute Gallery, and the San Diego Art Museum.

Sonya used to spend the winters in California and part of the summer in Minnesota. Now she paints mainly in Michigan—in Highland and on her son's farm in Fenton. Her paintings are a revelation of her surroundings.

Presently the paint is thinner on the canvas. The paintings that are the most spontaneous allow one to see the paint before the image and using compliments adds to the brilliance of the color.

FYI

Carole Brender Switches Gears

Carole Brender is a member of a group of Flint artists known as DAS Print Company, it's two other members include Stefan Davidek and William Stolpin. They became popular by creating prints of Genesee County landmark buildings.



Carole Brender
4.25 x 4.25 inches

Carole is transferring her best known prints (Flint Central High School and Capital Theater) onto ceramic tiles and glass cutting boards. Other images include Northern High School, Kewpee Halo Burger, Della Theater, Flint Farmers' Market, Buick City, Uncle Bob's Diner, and Water Street Pavilion. They are sold in the Art Sales and Rental Gallery and make great gifts for those who want a small reminder of their past.

For information
810.237.7321

Hours
Tue–Sat: 10a–5p, Sun: 1p–5p
or by appointment

founders travel

Look Inside the FIA

April 18, 2013 • 11a–2p

\$15 per person

Traveling in your own backyard can be as exciting and revealing as a trip to a far away place—also a lot easier and less costly to get to. Join us for a specially designed tour of the Flint Institute of Arts never before experienced.

Includes

- Tour led by John Henry, FIA Director, and senior staff members
- Buffet lunch



MSU Art Museum & Botanical Garden

May 8, 2013 • 10a–5:30p

\$55 per person

Spend a day at East Lansing's Michigan State University campus. Tour the new iconic *Eli and Edythe Broad Art Museum* and the *W.J. Beal Botanical Garden*, one of the country's oldest university gardens.

Includes

- Tour and lunch
- Round trip on motorcoach (*depart from FIA at 10:00a, return at 5:30p*)



Reflections of Italy

November 4–13, 2013

10 days • air & hotel • 14 meals

Regular Rates:

\$3,949 (double)

\$4,549 (single)

\$3,919 (triple)

**BOOK NOW &
SAVE \$250
OFF REGULAR RATES**

Revel in the magic of Italy on this 10-day tour that explores the cities of Rome, Florence, Siena, Venice, Assisi, Perugia, and Como. Travel the Tuscan and Umbrian countryside, exploring medieval hill towns and visiting the birthplace of St. Francis of Assisi. Discover the masterpieces of the Renaissance in Florence and see hot glass transformed into exquisite art on Murano Island. Linger in Venice for two nights before ending your journey in the lovely Italian Lake region. Cross the border and explore the Swiss resort town of Lugano.



FIA trip, contact Billie Fisher at 810.232.6867.

MSU trip, contact Dahna Loeding at 810.664.4428.

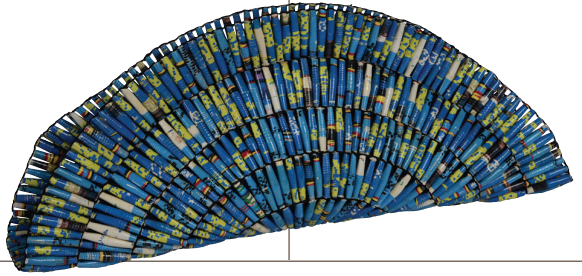
Italy trip, contact Billie Fisher at 810.232.6867 or Diane Roberts at 810.629.4270.



MUSEUM SHOP

Mon–Wed, Fri & Sat: 10a–5p*
Thu: 10a–9p, Sun: 1p–5p

* The Museum Shop is open late for select special events.



bag
it up



With spring blooming around us, everybody starts thinking about the beauty of nature and how to be more environmentally conscious. Not only are the bags from the Museum Shop stylish, but using and reusing them to run errands, carry groceries, take supplies to class, and tote lunch to work (just a few of the many options) are also great ways to reduce the amount of consumer waste that ultimately ends up in landfills. Most of them are doubly better for the planet because they are made from recycled fabrics, oilcloth, plastics, candy wrappers, paper, and even drinking straws! Next time you're here, come into the Museum Shop and check out the many fashionable, eco-friendly ways to bag it up at the FIA.

Members always receive a 10% discount on Museum Shop purchases.



The FIA Art School offers fall, winter and summer sessions for ages 2.5 through adult. Drawing, painting, sculpture, ceramics, weaving, and photography are among the classes offered. Non-members may call to receive a class brochure at 810.237.7315.

Benefits and privileges of FIA membership include 10% discount in the Museum Shop and *The Palette*; a 20% discount and early registration privileges on Art School classes, discounts on ticketed events, free admission to temporary exhibitions; Founders Art Sales & Rental privileges; invitations to opening receptions, lectures, and special events; FIA Magazine subscription; recognition in the FIA Magazine and Annual Report; and inclusion in two reciprocal membership programs for members at the \$100 level and above.

Rubens Society Members are individuals and businesses supporting FIA membership at the \$1,000 level and higher and are invited to three exclusive events each year.

The Flint Institute of Arts is a non-profit, equal opportunity employer and provides programs and services without regard to race, color, religion, national origin, age, sex or handicap.



Operating support for the Flint Institute of Arts is provided in part by the Charles Stewart Mott Foundation.



FIA Exhibitions and Programs are made possible in part with the support of the Michigan Council for Arts and Cultural Affairs, a partner agency of the National Endowment for the Arts.



This magazine, made possible through a generous donation by the Founders Society, is published five times per year for mailing to FIA members, museums and libraries around the country.



Mailing Address
1120 E. Kearsley Street
Flint, MI 48503-1915

Telephone
810.234.1695

Fax
810.234.1692

Website
www.flintarts.org



Office Hours
Mon–Fri, 9a–5p

Gallery Hours
Mon–Wed & Fri, 12p–5p
Thu, 12p–9p
Sat, 10a–5p
Sun, 1p–5p
Closed on major holidays

Theater Hours
Fri & Sat, 7:30p
Sun, 2p

Museum Shop
810.234.1695
Mon–Wed, Fri & Sat, 10a–5p
Thu, 10a–9p
Sun, 1p–5p

The Palette
810.234.1695
Mon–Wed & Fri, 9a–5p
Thu, 9a–9p
Sat, 10a–5p
Sun, 1p–5p

The Museum Shop and The Palette are open late for select special events.

Founders Art Sales & Rental Gallery
810.237.7321
Tue–Sat, 10a–5p
Sun, 1p–5p
or by appointment

Admission to Temporary Exhibitions

FIA membersFREE
Adults\$7.00
12 & underFREE
Students w/ ID\$5.00
Senior citizens 62+\$5.00

TARGET FREE SATURDAYS



FLINT INSTITUTE OF ARTS

1120 E. Kearsley St.
Flint, MI 48503



Looking for a healthier option? We now offer two new “all-natural” sandwiches made fresh to order — *Veggie Veggie* and *Turkey Tom Tom* with a multigrain bread from *Crust bakery*.

To curb that sweet tooth, try a *Pain Aux Raisin* made fresh daily from *Crust*.

Thursdays, 7p–10p is Happy Hour with live music, beer, wine, and great eats.

Members always receive a 10% discount at *The Palette*.

Hours

Mon–Wed & Fri	9a–5p*
Thursday	9a–9p*
Saturday	10a–5p*
Sunday	1p–5p

* *The Palette* is open extended hours for select special events.

