

FLINT INSTITUTE OF ARTS

fiam magazine

MAR-APR 2017



contents

from the director	2
exhibitions	3–6
videos	7
acquisitions	8
featured acquisition	9
art on loan	10
films	11–12
calendar	13
news & programs	14–20
art school	21–22
education	23–27
contributions	28–30
membership	31–34
founders society	35–36
museum shop	37

1

Website	flintarts.org
Mailing Address	1120 E. Kearsley St. Flint, MI 48503
Telephone	810.234.1695
Fax	810.234.1692
Office Hours	Mon–Fri, 9a–5p
Gallery Hours	Mon–Fri, 12p–5p Sat, 10a–5p; Sun, 1p–5p <i>Closed on major holidays</i>
Theater Hours	Fri & Sat, 7:30p; Sun, 2p
Museum Shop	810.234.1695 Mon–Sat, 10a–5p Sun, 1p–5p
The Palette	810.249.0593 Mon–Fri, 9a–5p Sat, 10a–5p; Sun, 1p–5p <i>The Museum Shop and The Palette Café are open late for select special events.</i>
Founders Art Sales & Rental Gallery	810.237.7321 Mon–Sat, 10a–5p Sun, 1p–5p <i>or by appointment</i>
Admission	FIA membersFREE Adults..... \$7.00 12 & underFREE Students w/ ID \$5.00 Senior citizens 62+ \$5.00



FREE SATURDAYS

cover image

On loan to the Neue Galerie,
New York, New York
(see page 10)

Alexej von Jawlensky
Russian, 1864–1941
Portrait of Marie Castel
(*Landscape on verso*) (detail),
1906
Oil on board
20 13/16 x 19 3/8 inches
Gift of Mr. and Mrs. Jerome O.
Eddy, FIA 1940.8

2

Philanthropy, Uncertainty, & You

As director of a not-for-profit organization, I am always interested in any information that leads us to create new initiatives to improve the bottom line. Lately, and it seems more than ever, each time I open my email, read the paper, or listen to the news, there are new and alarming speculations on trends in philanthropy. Of course, no one can predict the future and even expert analysts and forecasters rarely agree on what the future holds. There are always those who say the sky is falling, while others claim the future looks brighter than ever. But recently, and in addition to an expected lack of consensus in what I was seeing and hearing, I began noticing a heightened degree of desperation in message after message. Some examples:

“Americans donated a record \$373 billion to charity—an all-time high...”

“Tax reform will cap the charitable deductions leading to fewer donations to charities...”

“A rising economy will likely increase charitable giving...”

“The widening disparity between the wealthy and the less fortunate will have an effect on museum programming...”

“Funding for the National Endowment for the Arts and the National Endowment for the Humanities, will be cut...”

“Corporate philanthropy is showing signs of decline...”

“Foundations are changing their strategies for charitable giving...”

Nevertheless, things are going well for the FIA... so far. I believe this is due to continuing support from a broad base of primarily local individuals, corporations, and foundations. We are currently at \$4.5 million toward our endowment campaign

FROM THE EXECUTIVE DIRECTOR

goal of \$6 million, \$9 million toward our capital campaign goal of \$9.6 million, and we have a modest surplus in our operating budget. We do not receive tax dollars, except in the form of occasional small federal, state, and local grants; so, if there are cuts to granting agencies, they will not have a significant effect on our operations. Foundation support of the FIA has increased (thanks in



large part to the C. S. Mott Foundation) despite reports of a decreasing trend nationally, and corporate and business support of the FIA is at an all-time high. The completion of the new contemporary craft wing and glass blowing studio later this year will surely boost visitation and lead to increases in contributions at the door, admission income, membership, studio tuition, and retail sales in the FIA Museum Shop and Café.

So, where am I going with this? To you, actually—to thank you and other FIA members for your continuing generosity. Your support proves what we have known all along: that the financial security of your museum and art school is essential to the health and vitality of our community regardless of these uncertain times.

John B. Henry
Executive Director

Women of a New Tribe

Through 4.15.17

Hodge Galleries

Women of a New Tribe features black-and-white photographic portraits of women from Flint's African American community by artist Jerry Taliaferro. For more than a decade, Taliaferro has traveled across the country photographing women from all walks and stages of life. His primary motivation is "to celebrate unheralded women who have, until recently, been largely ignored and underappreciated. It is an attempt to see in a new light and, in a new way, an incredible group of women."

Women featured in this exhibition include: Deanetris Armstrong, TaShanda Arthur, Kendra Batson, Kenya Batson, Sandra Branch, Semaj Brown, Precious Buckner, Derenda Collins, Audrey Dismond, Kenyetta Dotson, Janice Harden, Remonia Hawkins, Larfayette Hayes, Thressa Horton, Valorie Horton, Kathy Jackson, Mildred James, Bernadel Jefferson, Kayla Latham, Erica Leverette-Traoré, E. Yvonne Lewis, Velynda Makhene, Felicia Martin, Patricia Miller, Sheila Miller-Graham, Candice Mushatt, Sharri Newman, Okola Senika Nigina Afi Nicholson, Gail Buckner Odom, ZsaZsa Orr, Lula Pea, Claudia Perkins-Milton, Lorene Randall, Brenda Rogers-Grays, Gwendolyn Sanders, Kathryn Kacey Seay, Mary Shufford, Sharon Simeon, Alverma Denise Smith-Sanders, Edith Prunty Spencer, Theresa Stephens-Lock, Vienaetha Stewart, Phyllis Sykes, Ernelle

Taylor, Natasha Thomas-Jackson, Marcia Watkins, Brenda Williams, Lynn Williams and Essence Wilson.

A fully illustrated catalogue accompanies this exhibition and is available for purchase in the Museum Shop.



Jerry Taliaferro
American, b. 1953
Dr. Sharon A. Simeon, 2016
Digital print
41 x 31 inches
© Jerry Taliaferro



Jerry Taliaferro
American, b. 1953
Audrey E. Dismond, 2016
Digital print
43 x 30 1/2 inches
© Jerry Taliaferro

Jerry Taliaferro
American, b. 1953
Semaj Brown, 2016
Digital print
40 7/8 x 31 7/8 inches
© Jerry Taliaferro

Exhibition is
sponsored by



panel discussion

Meet the Women of a New Tribe

Saturday 3.25.17 2p

FIA Theater

After a performance by poet Semaj Brown and Dr. James Brown, President of The Foundation for Mott Community College, Lenetta B. Coney will lead a panel discussion with participants of *Women of a New Tribe*. Visitors are invited to submit questions for the participants at the event and prior to the event on the museum's website.

Free to the public.



Reaction

The Art of Social Commentary

through 4.30.17

Graphics Gallery

In the 1930s, works on paper showing scenes of union organization, racial violence, fascism, and other political and social issues became more prevalent. Artists used the print medium as a tool of social commentary, creating the artistic and political movement called Social Realism. The Social Realism movement often used art as a tool to expose the struggle of the working class.

Although some of the issues have changed, artists still create imagery that expresses their opinion

and comments on social, political, and economic subjects. Some have faced intense criticism for their art while others have been commended for their courage. This exhibition examines works by Social Realist artists such as Hugo Gellert, George Grosz, and Ben Shahn, as well as contemporary social activist artists such as Sue Coe, Andy Warhol, Rupert Garcia, and David Wojnarowicz.

Graphics Gallery
is sponsored by



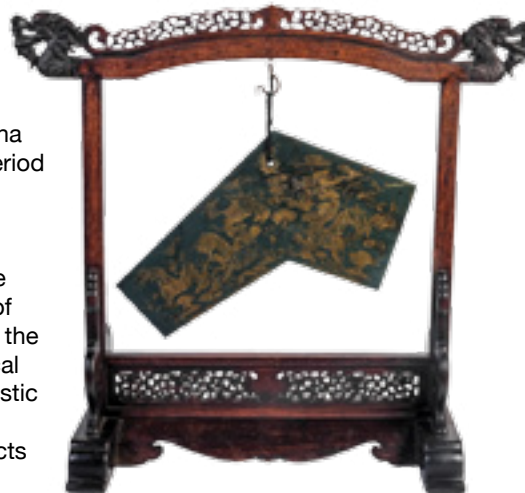
Art of Jade

through 7.30.17

Ann K. Walch-Chan Gallery

Throughout history, jade has had profound cultural implications in different regions of the world. *Art of Jade* includes objects from China that range from the Neolithic period (8,000–2,000 BCE) to the Qing Dynasty (1644–1912) and from Mesoamerican cultures dating back as early as 1800 BCE. The exhibition explores the history of these “jade cultures” as well as the functional, stylistic, and technical developments of jade as an artistic medium throughout time.

One of the largest jade objects in the exhibition is *Dragon in Clouds Chime* from the 18th



Rodin:

The Human Experience

Selections from the Iris and B. Gerald Cantor Collections

5.6.17 to 7.30.17

This exhibition will feature over 50 bronzes by French sculptor Auguste Rodin, recognized as one of the greatest sculptors since Michelangelo. His pioneering work deconstructed the body as fragments, or partial figures, that reveal human vitality, pathos, and beauty. His expressionistic modeling, sensuality, and modernist approach to public sculpture brought him both scandal and success.

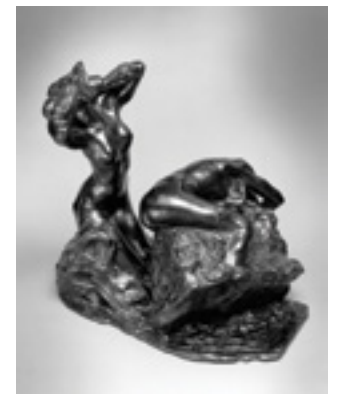
This exhibition has been organized and made possible by the Iris & B. Gerald Cantor Foundation.



Rupert Garcia
American, b. 1941
The Most Dangerous Woman in America, 1989
Silkscreen on paper
30 x 22 1/8 inches
Gift of Mr. Jack B. Pierson, FIA 1991.18

Qing Dynasty, 1644–1911/12
Chinese
Chime: Dragon in Clouds, 1765
Jadeite
26 7/8 x 29 3/4 x 12 1/4 inches
Gift of Mrs. Fredrick B. Miner, FIA 1968.13

century. This chime is part of a larger set of 12 called a te-qing. They can be made from many materials but carved jade was said to give the finest tone. These instruments were played for imperial audiences or during palace banquets and religious ceremonies. The use of a pure green jade, along with the depiction of imperial dragons, indicates that this chime was most likely commissioned for Emperor Qianlong, who reigned from 1735 to 1796.



Auguste Rodin
French, 1840–1917
Toilette of Venus and Andromede, modeled after 1890; Musée Rodin cast 1/8 in 1987
Bronze; Godard Foundry
20 x 14 1/2 x 23 1/2 inches
Lent by Iris Cantor

fleckenstein video gallery

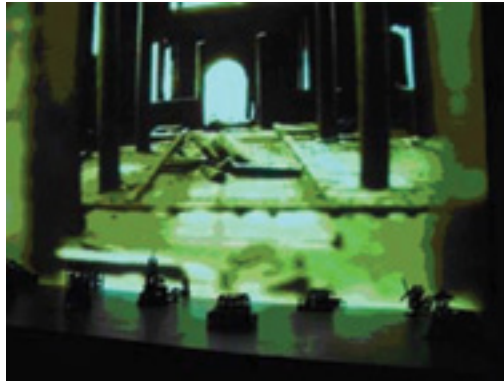
march

Civitas

Jacek Jerzy Kolasinski, Polish, 2004, 7:07 minutes, Museum purchase, FIA 2006.81

Jacek Jerzy Kolasinski's installations are rooted in the experience of growing up in two worlds: the "Old World" of Krakow, Poland, and the "New World" of the United States. The search for identity in the vortex of cultural displacement surfaces often in his work. *Civitas* is a small-scale re-creation of a medieval town destroyed by fire. It serves as a parable describing the devaluation of various social institutions like religion and family.

The dilapidated buildings are emblematic of urban decline. The projected images are captured, transmitted, and transformed by a small video camera situated in the center of the installation. This imagery gives the impression of an anonymous explorer documenting the ruins in the heart of an unnamed village devastated by some unknown disaster.



april

Madame Perfetti & the Tree

Laetitia Hohenberg, American, b. 1962, 4:04 minutes

"Madame Perfetti is a person I visit. She has dementia. My piece is a replica of the space we both share. It is a suspended moment; an exquisite present lived at a glance, with no past or future."

— Laetitia Hohenberg



Courtesy of the artist.

acquisitions

**Beth Cavener**

American, b. 1972
Empire of Dust, 2006 ▲
Stoneware with painting and an antique box
23 x 41 x 45 inches
Museum purchase with funds from the Collection Endowment, FIA 2016.33

Margaret Keelan

Canadian, b. 1948
Robin, 2008
Ceramic
25 x 5 x 6 inches
Museum purchase with funds from the Collection Endowment, FIA 2016.34

Christine Federighi

American, 1949–2006
Untitled, n.d.
Ceramic
67 x 9 x 9 inches
Museum purchase with funds from the Collection Endowment, FIA 2016.35

Don Freeman

American, 1908–1978
Plights of Stardom, 1935
Lithograph on paper
14 3/8 x 12 3/8 inches
Museum purchase with funds raised from the Flint Print Club, FIA 2016.36

Allen Weary

American, 19th/20th century
From Lake St. Bridge, Looking N. East, 1898
Pencil on paper
5 1/4 x 8 5/8 inches
Museum purchase with funds raised from the Flint Print Club, FIA 2016.37

Hans Klemke

German, 1892–1960
Coal Mine, ca. 1930
Hand-colored etching on paper
11 1/4 x 8 inches
Museum purchase with funds raised from the Flint Print Club, FIA 2016.38

John Costigan

American, 1888–1972
Springtime, ca. 1938
Etching on paper
9 1/2 x 11 1/8 inches
Museum purchase with funds raised from the Flint Print Club, FIA 2016.39

Joseph Pennell

American, 1857–1926
The Grip, Serang, 1910
Etching on paper
9 3/8 x 12 3/8 inches
Museum purchase with funds raised from the Flint Print Club, FIA 2016.40

Hugh Mesibov

American, b. 1916
Unworldly Landscape, 1942
Pencil on paper
9 x 11 3/4 inches
Museum purchase with funds raised from the Flint Print Club, FIA 2016.41

Andre Racz

American, b. Romania, 1916–1994
Depression and Neurosis, 1944
Engraving on paper
9 1/4 x 13 3/4 inches
Museum purchase with funds raised from the Flint Print Club, FIA 2016.42

**Jacqueline Bishop**

American, b. 1955
Peach Tree, 2014 ▲
Watercolor over collage on paper
24 x 18 inches
Museum purchase with funds raised from the Flint Print Club, FIA 2016.43

Douglas Bourgeois

American, b. 1951
Discard for Amy Winehouse, 2013
Acrylic over collage on board
12 1/4 x 7 1/4 inches
Museum purchase with funds raised from the Flint Print Club, FIA 2016.44

**Albrecht Dürer**

German, 1471–1528
Saint Nicholas, Ulrich and Erasmus, ca. 1505 ▲
Woodcut on paper
8 1/2 x 5 3/4 inches
Museum purchase with funds raised from the Flint Print Club, FIA 2016.45

Santiago Moix

Spanish, b. 1960
Rapa III, 2003
Iris print on paper
17 x 21 inches
Museum purchase with funds raised from the Flint Print Club, FIA 2016.46

Linda Soberman

American
Conversation/Paris 2, 2014
Lithograph on paper
20 x 10 1/2 inches
Museum purchase with funds raised from the Flint Print Club, FIA 2016.47

Arthur Rothstein

American, 1915–1985
Dust Storm, Cimarron County, Oklahoma, 1936
Silver gelatin print
11 x 14 inches
Museum purchase with funds raised from the Flint Print Club, FIA 2016.48

Ivan Albricht

American, 1897–1983
Self Portrait at 55 East Division, 1947
Lithograph on paper
14 1/8 x 10 1/8 inches
Museum purchase with funds raised from the Flint Print Club, FIA 2016.49

featured acquisition

Arthur Rothstein

In the 1930s, the U.S. government formed the Resettlement Administration (which later became part of the Farm Security Administration [FSA]), a New Deal agency that relocated rural families negatively affected by the Great Depression. One of the most pressing issues facing many of these Americans was the severe drought in the West brought on by extreme weather patterns, resulting in what came to be known as the Dust Bowl. Within the FSA, Roy Stryker headed a photography unit tasked with documenting these disastrous effects, as well as the help provided by governmental agencies. Stryker hired eleven photographers, the first being his former pupil at Columbia University, Arthur Rothstein. His other hires included Walker Evans, Dorothea Lange, and Ben Shahn.

The son of Jewish immigrants, Rothstein was born and raised in New York City. At age 21, he traveled to the Dust Bowl in April of 1936. His most well-known photograph *Dust Storm, Cimarron County, Oklahoma* was taken not long after he arrived. The subjects are Arthur Coble and his two sons, Milton and Darrel, walking past a shed on their property during a dust storm in Boise City, located in the panhandle of Oklahoma. Rothstein recalled the moment that he took this shot: "I was about to get into my car when I turned to wave to [Coble and his two sons]. And I looked and saw this man bending



Arthur Rothstein
American, 1915–1985
Dust Storm, Cimarron County, Oklahoma, 1936
Silver gelatin print
11 x 14 inches
Museum purchase with funds raised from the Flint Print Club, FIA 2016.48

into the wind, with one of the boys in front of him and another one behind him, and great swirls of sand all around, which made the sky and the earth become one. And I said, 'What a picture this is!' and I just picked up my camera and went 'click.' One photograph, one shot, one negative." As an adult Darrel Coble (the boy pictured at the right) remembered the following: "All the days was about alike then. For a 3-year-old kid, you just go outside and play, dust blows and sand blows, and you don't know any different."

art on loan

The following artworks are on loan from the FIA to the following exhibitions:

James Perry Walker: The Preacher & His Congregation

11.10.16 – 3.5.17

Muskegon Museum of Art
Muskegon, Michigan

55 gelatin silver prints



James Perry Walker
American, 1945–2014
Praying Woman, Lagoshen Church (Rossville, TN), 1978
Gelatin silver print
14 7/8 x 14 7/8 inches
Museum purchase, FIA
2000.31.19

Alexej Jawlensky

2.16.17 – 5.29.17

Neue Galerie
New York, New York



Alexej von Jawlensky
Russian, 1864–1941
Portrait of Marie Castet (Landscape on verso), 1906
Oil on board
20 13/16 x 19 3/8 inches
Gift of Mr. and Mrs. Jerome O. Eddy, FIA 1940.8

Pressed for Time: The History of Printmaking

3.18.17 – 7.2.17

**Kalamazoo Institute of
Arts**
Kalamazoo, Michigan



Currier & Ives (Publisher)
(active New York,
1857–1907)
*The Evacuation of
Richmond, VA*, 1865
Hand-colored lithograph
12 x 14 7/8 inches
Museum purchase, FIA
1964.24

With 41 additional
prints from the
FIA's collection

Screenings

Fri & Sat @ 7:30p,
Sun @ 2p

Admission

\$5 members
\$6 non-members
\$4 FOMA members

Film titles are subject to change.

FOMA films are supported by



Preview sponsor



Additional sponsors



March 3, 4, 5

Elle

(France/Germany/Belgium, 2016) Directed by Paul Verhoeven, 130 min., subtitled, rated R

Isabelle Huppert won a recent Golden Globe as best actress in a psychological thriller about a woman who plots revenge after being sexually assaulted. Paul Verhoeven's edgy film—lauded by *Variety* as “complex” and “compassionate”—landed on many top 10 lists.

March 10, 11, 12
Toni Erdmann

(Germany/Austria, 2016) Directed by Maren Ade, 163 min., subtitled, rated R

In this Oscar nominee for best foreign language film, a practical-jokester dad tries to reconnect with his workaholic daughter by creating an outrageous alter ego and posing as her CEO's life coach. “Refreshing... downright hilarious,” praises *Screen International*.



March 17, 18, 19

Julieta

(Spain, 2016) Directed by Pedro Almodóvar, 110 min., subtitled, rated R

A middle-aged woman is forced to painfully re-examine her life after learning that her long-lost daughter has resurfaced. Pedro Almodóvar's adaptation of Alice Munro's short stories has been described by *Newsweek* as “an enthralling meditation on the mechanics of memory and grief.”

March 24, 25, 26
Moonlight

(U.S., 2016) Directed by Barry Jenkins, 110 min., rated R

In a tender story told through three defining chapters in his life, a young man struggles to find himself as he falls in love while grappling with his sexuality. *The New York Times* calls this Oscar-nominated film “almost unbearably personal” and “an urgent social document.”



March 31 & April 1, 2

Paterson

(U.S., 2016) Directed by Jim Jarmusch, 118 min., rated R

Adam Driver (*Star Wars: The Force Awakens*) excels in a quiet Jim Jarmusch-directed dramedy about a week in the life of a poetry-writing New Jersey bus driver. The *San Francisco Chronicle* calls this “a small miracle... both intellectually dazzling and emotionally provocative.”

April 7, 8, 9
Things to Come

(France, 2016) Directed by Mia Hansen-Love, 102 min., subtitled, rated PG-13

The great Isabelle Huppert headlines a Parisian drama in which a high school philosophy teacher is forced to reinvent her life after her husband announces he is leaving her. “A major, many-shaded work even by her lofty standards,” *Variety* writes about the film and its heralded star.



April 13, 14, 15

Peter & the Farm

(U.S., 2016) Directed by Tony Stone, 91 min., not rated

In a haunting mix of documentary and cautionary tale, which has been described by IndieWire.com as “a woolly meditation on mortality,” a proud farmer in Vermont regrettably confronts his history and his legacy as he observes his life nearing an end.

April 21, 22, 23
Academy Award Nominated Shorts

As is customary in the FOMA movie season, we're presenting the official theatrical program of the most recent Academy Award nominees in the live-action and animated short-film categories. Watch for a complete list of titles and presentation times at flintarts.org.



April 28, 29, 30

Neruda

(Chile/Argentina/France, 2016) Directed by Pablo Larrain, 107 min., subtitled, rated R

Gael Garcia Bernal (*Bad Education*) heads the cast of a drama—a Golden Globe Award nominee for best foreign language film—as a police inspector in the 1940s who hunts down famed Chilean poet Pablo Neruda after the latter becomes a fugitive for joining the Communist Party.

jewish film festival preview

April 20
Fanny's Journey

(France, 2016) Directed by Lola Doillon, 94 min., subtitled, not rated

A resourceful girl leads a band of orphans through Nazi-occupied France. This free screening at 7:00p is a preview of the annual Karen Schneider Jewish Film Festival of Flint, to be presented by the Flint Jewish Federation and the FIA April 30 through May 4.

1	WE	12:15p	Art à la Carte: <i>Women: The Sculpture Diaries</i>
3	FR	7:30p	FOMA Film: <i>Elle</i>
4	SA	7:30p	FOMA Film: <i>Elle</i>
5	SU	1:00p 2:00p	Art Sales & Rental: <i>Artist Reception for FOMA Film: Elle</i>
8	WE	12:15p	Art à la Carte: <i>Expressing the Inexpressible: Shirin Neshat</i>
10	FR	7:30p	FOMA Film: <i>Toni Erdmann</i>
11	SA	11:00a 7:30p	Family Activity: <i>Art School LEGO®</i> FOMA Film: <i>Toni Erdmann</i>
12	SU	1:00p 2:00p	Art Sales & Rental: <i>Artist Reception for Alyssa Minatel</i> FOMA Film: <i>Toni Erdmann</i>
15	WE	12:15p	Art à la Carte: <i>Faith Ringgold: Paints Crown Heights</i> and <i>Howardena Pindell: Atomizing Art</i>
17	FR	7:30p	FOMA Film: <i>Julieta</i>
18	SA	7:00p 7:30p	Wine Tasting: <i>An Evening of Wine & Roses</i> FOMA Film: <i>Julieta</i>
19	SU	2:00p 2:00p	FOMA Film: <i>Julieta</i> Family Program: <i>Baby Tour</i>
22	WE	12:15p 1:30p	Art à la Carte: <i>Elizabeth Catlett: Sculpting the Truth</i> and <i>Emma Amos: Action Lines</i> Book Discussion - Part I: <i>The Danish Girl</i>
24	FR	7:30p	FOMA Film: <i>Moonlight</i>
25	SA	2:00p 7:30p	Panel Discussion: <i>Meet the Women of a New Tribe</i> FOMA Film: <i>Moonlight</i>
26	SU	2:00p	FOMA Film: <i>Moonlight</i>
29	WE	12:15p	Art à la Carte: <i>Women in Allegory: Gender & Sculpture in Two Cities</i> and <i>Picturing the Genders: Male & Female Views of Women in Art</i>
31	FR	7:30p	FOMA Film: <i>Paterson</i>

calendar

1	SA	7:30p	FOMA Film: <i>Paterson</i>
2	SU	2:00p	FOMA Film: <i>Paterson</i>
3	MO	1:00p	Family Program: <i>Spring Break Special (April 3-7)</i>
4	TU	2:00p	Family Program: <i>Storytime with Art</i>
5	WE	12:15p 1:30p	Art à la Carte: <i>Adventure of Photography, Portraitists/Nudes</i> Book Discussion - Part II: <i>The Danish Girl</i>
6	TH	2:00p	Family Program: <i>Storytime with Art</i>
7	FR	7:30p	FOMA Film: <i>Things to Come</i>
8	SA	7:30p	FOMA Film: <i>Things to Come</i>
9	SU	2:00p	FOMA Film: <i>Things to Come</i>
12	WE	12:15p	Art à la Carte: <i>Finding Vivian Maier</i>
13	TH	7:30p	FOMA Film: <i>Peter and the Farm</i>
14	FR	7:30p	FOMA Film: <i>Peter and the Farm</i>
15	SA	1:00p 7:30p	Youth Membership Activity: <i>My Nest is Best</i> FOMA Film: <i>Peter and the Farm</i>
16	SU	Closed	Easter
19	WE	12:15p 6:00p	Art à la Carte: <i>Pedro E. Guerrero: A Photographer's Journey</i> Sheppy Dog Fund Lecture - Part I: <i>The Fiery & the Fallen</i>
20	TH	7:30p	Jewish Film Festival Preview: <i>Fanny's Journey</i>
21	FR	7:30p	FOMA Film: <i>Academy Award Nominated Shorts</i>
22	SA	7:30p	FOMA Film: <i>Academy Award Nominated Shorts</i>
23	SU	2:00p	FOMA Film: <i>Academy Award Nominated Shorts</i>
26	WE	12:15p 6:00p	Art à la Carte: <i>Disfarmer: A Portrait of America</i> Sheppy Dog Fund Lecture - Part II: <i>The Fiery & the Fallen</i>
28	FR	7:30p	FOMA Film: <i>Neruda</i>
29	SA	7:30p	FOMA Film: <i>Neruda</i>
30	SU	2:00p 2:00p	FOMA Film: <i>Neruda</i> Family Program: <i>Baby Tour</i>

expansion news

Donor Profile

A. G. Bishop Trust supports the
Flameworking Studio

During the construction, the *FIA Magazine* will continue with this section called *Expansion News*. This will include construction updates, images, and an up-to-date list of donors to the project. The expansion is scheduled for completion in the fall of 2017.

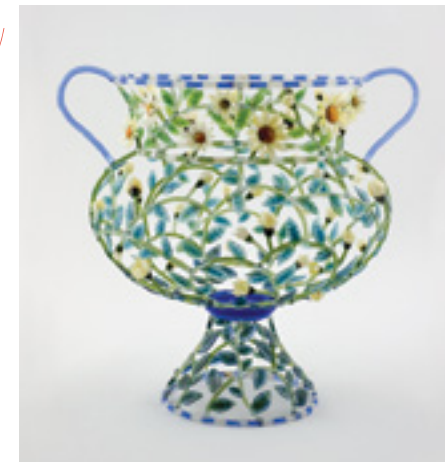
The expansion project includes converting the existing 3,960 sq. ft. exterior courtyard in the Art School into a covered, multi-purpose studio Makerspace for glassblowing, 3D art classes, and public demonstrations. The Art School is also adding a cold shop, a sculpture modeling studio, and a Flameworking Studio. Flameworking is a technique used by artists to create glassworks including beads, paperweights, and sculptures.

The Flameworking Studio is designed specifically to fabricate glass using torches. This specialized studio will be located on the second floor with appropriate specifications for electrical, gas, and ventilation. The studio will be equipped with fireproof steel tables, high-quality torches, kilns, and specialized tools. The natural synergy between the Flamework and Glassblowing Studios will allow students in the Flameworking Studio to watch glassblowing and aesthetically

stimulate them to incorporate techniques into their objects. Some of the most accomplished flamework artists frequently encase their works in molten glass, which requires a blowing facility. These new spaces will increase the FIA's ability to provide all methods of glassmaking to the community.



Fired Up!



The FIA thanks the A. G. Bishop Trust for helping the Art School provide a studio for one of the most exciting and popular techniques that glass artists are using today.

Kari Russell-Pool
American, b. 1967
Daisy Chain, 2004
Flameworked glass
16 x 12 x 12 inches
Gift of Claire White,
FIA 2005.17

expansion news

Contributions

Several major equipment purchases still need funding including glass furnaces, annealing ovens, elevator, seating, studio furniture, audio/video equipment, and gallery lighting. We wish to thank all those who have made contributions to the capital campaign so far. Our goal is an additional \$1 million for equipment and \$4 million of endowment to support the expanded operation.

Keep the flame burning with your contributions. Contact Kathryn Sharbaugh at ksharbaugh@flintarts.org, call 810.234.1695, or visit flintarts.org.

Expansion Project Endowment & Equipment Funds Contributors

Since 3.17.16 – 1.13.17

Ms. Frances Abbott-Dereski
Mr. & Mrs. Ricardo Alfaro
Ms. Valarie Allen
Ms. Andrea Ashmore
Mr. Steven S. Bailie
Mr. & Mrs. Kelly B. Beardslee
Dr. & Mrs. William D. Beck & Kristen
Dr. & Mrs. Henry Beckmeyer
Mr. & Mrs. Stephen Bernstein
Ms. Jane M. Bingham
Falding Bishop
Ms. Bernie Bishop
Ms. Susan Steiner Bolhouse & William S. Ballenger II
Donald A. & Lavonne C. Bomeli
Patrick Botz, D.O.
Mrs. Edmund Brownell
Mr. & Mrs. Howard J. Bueche
Tom & Denise Butts
Mr. Christopher Carr
Ms. Sally Case
Charles Stewart Mott Foundation, in honor of Claire M. White
Mr. & Mrs. Tom Cheek
Mr. & Mrs. Bryan Christie
Ms. Melba R. Clapp
Ms. Mary Coleman
Mr. & Mrs. Chapin Cook
Susan & George Cross
Mrs. Nancy J. Cunningham
Ms. Gail M. Curry
Bob & Luce Daly
Mr. Wm. Stefan Davidek
Lorretta Davis & Harold Ford
Mrs. Rosemary R. DeCamp
Ms. Stephany R. Diana & Mr. Dennis Zawol
Ms. Jeanne Dobes
Dort Fedral Credit Union
Mr. Robert F. Dueweke

Mr. Chris & Dr. Jean Dundas, in honor of Kathryn Sharbaugh
Ryan Michael Eashoo
Education Department
Mrs. Loretta C. Ellwood
Donovan & Michele Entrekin
James C. Fabiano II
Mr. & Mrs. Michael A. Farella
Mr. & Mrs. Ed Fizell
Ms. Elaine Flore
Mr. & Mrs. Robert Florine
Brenda Fortunate, D.O. & Edward White
Dr. & Mrs. Scott A. Garner
Mr. Thomas M. Gervasi
Mr. & Mrs. Jonathan Glab
Debra A. Golden-Steinman & Dr. Harold V. Steinman
Hank & Bonnie Graff
Mrs. Bobbie J. Greer
Guardian Security Services, Inc.
Deb Gustafson & Sue Weston
Ingrid G. Halling & Robert Thomas
Mr. & Mrs. Daniel S. Harrett
Mr. & Mrs. Joel H. Harris
Jan & John Hartranft
Mrs. James Hastings
Mr. Paul F. Hauth
Ms. Annetta Hendrickson
Edward & Donna Henneke
Mr. & Mrs. John B. Henry
Mr. Mark R. Holen & Ms. Linda M. Segura
Ms. Barbara Holmer & Mr. Robert Stanisch
Ms. Ethel Hooker
Ms. Lynne Hurand
Dr. Susumu Inoue
Ms. Heather Jackson
Mr. Robert Jacobs
Mrs. Judith Jacobson

Mr. & Mrs. Thomas S. James
Ms. Judy Johnson
Ms. Jane M. Johnson
Mrs. Agape Kallis
G. Donald & Elaine Kaye
Mr. & Mrs. Raymond J. Kelly III
Miss Janice Klein
Mr. & Mrs. Norman Kleiner
Mr. & Mrs. Wes Kohn
Ms. Karyn Konkel
Ms. Chene Koppitz
Mr. & Mrs. Frederick L. Kump
Mr. Miles Lam
Mr. & Mrs. Stephen S. Landaal
Mr. Lawrence N. Larson
Dr. Jamile T. Lawand & Mr. Barry J. Carr
Mr. & Mrs. James Lay
Mrs. Ruth Leder
Raymond & Pamela Lee
Mrs. Linda LeMieux
Max Lepler & Rex L. Dotson
Mr. & Mrs. Carl A. Leser
Mr. & Mrs. Thomas B. Lillie
Tiffany & Bob Lovett
Glenn & Regina Lysinger
Ms. Doris Malfese
Ms. Jeanette R. Mansour & Mr. Joe Green
Mrs. Mary Markel
Dr. & Mrs. Berton J. Mathias
Ms. Rosellen McAlear
Mr. & Mrs. David S. McCredie
Patricia & Edward Meier
Mr. Michael Melenbrink & Mr. Ronald Sims
Michigan Council for Arts & Cultural Affairs
David & Karen Miller
Robert & Barbara Mills
Ms. Barbara Mirsky

Fixed Up!

In late fall of 2016, heavy equipment rolled onto the grounds of the FIA, so workers could begin clearing space for the museum's highly anticipated Contemporary Craft wing, set to open later this year.



Mr. Thomas J. Mitchell
Ms. Marlene Morris
Ms. Lori Motley
Mr. & Mrs. Michael Munger
Dr. & Mrs. Kienan F. Murphy
Ms. Sharon Y. Naughton
Mr. & Ms. Tom Neuhard
Mr. & Mrs. Jonathan Nigrine & Family
Mr. & Mrs. Peter Ott
Ms. Janet Pankey
Ms. Carole A. Pappas
Mr. H. Michael Parker
Ms. Patt Parker
Peter D. & Nancy P. Kleinpell Fund
of the Community Foundation of Greater Flint
Ms. Jacqueline Piechowski
Ms. Marissa Pierce
Mrs. Janice G. Pike

William H. Piper
Dr. & Mrs. Mark Plucer
Dr. & Mrs. George D. Politis
Ms. Frances J. Price
Betty & Richard Ramsdell
Gary & Barbara Stone Reetz
Dr. Jacquelyn Reinertson
Mr. & Mrs. Michael J. Riha
Mr. Alfred Arnold & Mrs. Dolores M. Roat-Arnold
Frank & Linda Roberts
Mr. & Mrs. Paul Rozycki
Drs. Michael & Virginia Rucks
Ann & Khalil Saab Family Fund
Dr. Russell G. Sandberg
Ms. Grayce Scholt
Howard & Tammy Schultz
Ms. Marsha V. Schwarz
Chuck & Kathryn Sharbaugh
Skaff Carpet & Furniture Co.

Jim & Patt Spangler
Ms. Anita Spencer
Ms. EmmaLou St.Onge
Miss Barbara Stewart
Gary & Barb Stone Reetz
Mr. Tom Teal & Dr. Jeannine Teal
Ms. Susan E. Thompson
Mrs. Ruth P. Thrash
Ms. Rita Valley

Matching Gifts
Charles Stewart Mott Foundation

Trustee Initiated Grant
Tiffany Lovett
Mr. William S. White

flint print club



Stanley Casselman
American, born 1963
Luminor Moment, 2016
Screenprint on paper
30 1/4 x 22 1/2 inches

Each year, the Flint Print Club commissions an artist to produce a print to augment both the FIA's collection and the pursuit of personal collecting. The Club is limited to 100 members in good standing at the Family level or above. Flint Print Club dues are \$250.00 annually, which provides each participating member with a selected print and related programs.

The FIA is excited to announce that the 2016 commissioned print by Stanley Casselman was so well received, only four remain! Don't miss out on your opportunity to own Casselman's first ever print, commissioned to celebrate the 10th anniversary of the Flint Print Club. To find out more about the artist and his work, please visit stanleycasselman.com.

For more information about joining the Flint Print Club, please contact Valarie Allen at 810.234.1695 or via email at vallen@flintarts.org.

Yes, I want to be a member of the Flint Print Club 2016–2017.

Membership Information

Circle: Dr. Mr. Mrs. Ms. Miss

Name _____

Address _____

City _____ State _____ Zip _____

Phone _____

Email _____

Method of Payment

Check payable to "Flint Print Club"

Visa MasterCard Discover AMEX

Account # _____ Exp. Date _____

Signature _____

I am currently an FIA member at the \$50 level or higher (see page 31 for levels).

I would like to upgrade my membership or join the FIA at the \$50 level or higher with an additional:
\$ _____

+ \$250.00 Flint Print Club dues
= \$ _____ **Total Payment**

For more information, contact Valarie Allen at 810.234.1695 or vallen@flintarts.org.

profile

FIA Program Trains Future Museum Professionals

Through its internship program, the FIA Curatorial Department creates professional opportunities for undergraduate- and graduate students seeking to enter the museum field. Several FIA interns have gone on to graduate programs in art history and have been employed by museums or art galleries. The internship is project-based so that the intern can begin and complete a task within a semester, which then can be listed as work product on their resume.

In summer 2016, Xuanrong Lu, a graduate student majoring in Arts Administration at the University of Michigan-Flint, interned with the department. Lu is from Guilin, China, with a scholarly interest in Chinese art. She curated the *Art of Jade* exhibition, now on view in the Ann K. Walch-Chan Gallery Decorative Arts Gallery (see pages 5–6). About her experience, Lu wrote, "Field practices at an institution like the FIA can be very beneficial



for students majoring in art-related fields, and the experiences I've had in this museum has been especially meaningful. Collaborating with the FIA staff on the jade exhibition enabled me to go through the whole process of putting on an exhibition, from concept to installation. It also further enhanced my curatorial writing skills in English and my ability to put theoretical studies and object research into public art education via a logical narrative and visual presentation. The professional training, insightful discussions, and the care I received during my internship, all made the time I spent at the FIA, no doubt, among the most memorable in my life abroad."



free family activity

Art School LEGO®

March 11 • 1p–5p

Studio 1, Lecture Room,
& Isabel Hall

The FIA Art School will host the sixth annual LEGO exhibition and competition. This free, one-day event encourages LEGO enthusiasts, grades K-12, to create and submit unique Lego sculptures. All works must be original (no copies or out-of-the-box kits, please) and will be juried in the following categories: most creative, most technically challenging, people's choice, and honorable mention. Prizes include Art School scholarships, local merchant gift cards, LEGO kits, and FIA memberships. Selected works will be exhibited in the FIA Art School the following week. LEGO creations may be no more than 12 inches square and 16 inches in height.

Works are to be created in advanced and may be submitted between 1–2:45p, followed by an awards ceremony in the FIA Theater at 4p.



Sponsors
of LEGO®
Awards

BARNES & NOBLE



Dr. Shawn Reiser & Dr. David Taylor



youth membership activity



My Nest is Best

April 15 • 1p–3p

Studio 7

Another long winter has passed, and even though it's still a bit chilly, it's time to celebrate the signs of spring! Days are longer, the sun is shining, tiny buds poke through the soil, and little birds are frantically gathering nesting materials. Youth members will design a bird house cottage along with the birds that might nest therein while learning about faux finishes and cottage history. This is a 2-hour project and participants must stay for the full time period.

Free to Youth Members. Youth Memberships can be purchased in advance or at the door for \$20 per child. Memberships include three activities per year.

class highlights

Intro to Sculptural Welding

Learn to manipulate steel through bending, hammering, cutting and welding to create a unique sculptural form. We will cover cutting and shaping metal, MIG welding, and finishing techniques. Students will be supplied with enough metal to complete at least one project and possibly more. Teens Welcome.

Paul Hauth, *Instructor*

Fri (5 wks) 3/3-3/31 or 4/7-5/5 1p–4p
Tuition \$230 (20% off for FIA members)
(beginner)

Clay Animals & Space

To boldly go where no man has gone... Imagine you're an alien or astronaut lost in space! You and your special one will take an imaginary trip, come back to Earth and create your very own alien, space rocket, and planets all out of clay. Come and get messy rolling, patting and pounding your space-tastic art!

Karyn Konkel, *Instructor*

Tue (6 wks) 3/14-4/25 9:30a–11a
No class 4/14
Tuition \$195 (20% off for FIA members)
(ages 3–5)

After School Clay Wheel Throwing/Hand Building

Together, parents and children will learn basic wheel throwing and hand building techniques to create a variety of functional bowls and cups decorated with colorful underglazes. Experienced students are free to explore and develop their skills with the direction of the instructor.

Karyn Konkel, *Instructor*

Tue (6 wks) 3/14-4/25 4p-5:45p
No class 4/4
Tuition \$214 (20% off for FIA members)
(ages 6–12 with adult)

In addition to these classes and programs, the Art School offers over 75 classes and workshops per 10–15 week sessions.

1-Day Workshop

Celebrating “Women of a New Tribe” Through Drawing

Respond to imagery from this exhibition, or use your own photographs as reference material for drawing. You will learn to manipulate pastel and charcoal to re-create figurative images or more ethereal black-and-white subjects such as billowing clouds or smoke. With development of contrast and value, the illusion of 3D form comes to life on paper. Teens are welcome.

Rachel Reynolds, *Instructor*

Fri (1 week) 3/10 10a–5p
Tuition \$128 (20% off for FIA members)
(beginner, intermediate, advanced)

1-Day Workshop

Linear Perspective in Drawing

This workshop will help you learn to better represent realistic space in your paintings and drawings. Essential principles of one-, two-, and three point perspective will be covered. The workshop will include exercises from rectilinear objects and photo references. Please, bring graphite pencils and drawing paper. Teens are welcome.

Alla Dubrovich, *Instructor*

Mon (1 week) 3/27 12p–5p
Tuition \$53 (20% off for FIA members)
(beginner, intermediate, advanced)

For additional information on Art School programming, contact the Art School at 810.237.7315 or arted@flintarts.org.

art à la carte

Art à la Carte is a series of informative programs focusing on the arts. It is offered free of charge on Wednesdays at 12:15p. Participants are encouraged to bring lunch or pick up something from The Palette Café. Coffee, tea, and cookies are provided. All programs are held in the FIA's Isabel Hall.

March 1

Women: The Sculpture Diaries

The feminine form has inspired artists for thousands of years—but have the results done justice or injustice to women? What specifically does the history of sculpture tell us about attitudes toward womanhood and ideas of feminine beauty? *49 min.*

March 8

Expressing the Inexpressible: Shirin Neshat

An acclaimed photographer, filmmaker, and video artist, Iranian-born Shirin Neshat addresses the complex forces shaping the identity of Muslim women throughout the world, and explores the social, political, and psychological dimensions of women's experiences. *42 min.*

March 15 - double feature

Faith Ringgold: Paints Crown Heights

Through folktales and painting, this documentary shows how 12 diverse cultures have contributed to the American spirit. *28 min.*

Howardena Pindell: Atomizing Art

A passionate artist and social critic marries beauty with ugliness, right with wrong, justice with injustice. *28 min.*

March 22 - double feature

Elizabeth Catlett: Sculpting the Truth

This program focuses on Elizabeth Catlett, an artist who sculpts the truth from wood, stone, and terracotta. *28 min.*

Emma Amos: Action Lines

A dramatic palette includes materials such as photos, Emma Amos' own weaving, and African cloth to help portray her feelings and fears. *28 min.*

March 29 - double feature

Women in Allegory: Gender & Sculpture in Two Cities

From the Arc de Triomphe in France to the Lakshmana Temple in India, symbol-laden sculptural images of women abound. This program skillfully deconstructs the politically charged monuments from post-Revolutionary Paris and the ornamental temple sculptures from 11th century Khajuraho while contrasting the allegorical meanings ascribed by Western and Eastern cultures. *30 min.*

Picturing the Genders: Male & Female Views of Women in Art

This documentary looks at women as artists, as subjects of paintings by both male and female artists, and the roles of, and discrimination against, women artists historically. *31 min.*

Art à la Carte Sponsors

The Merkley-Elderly Charitable Trust



April 5

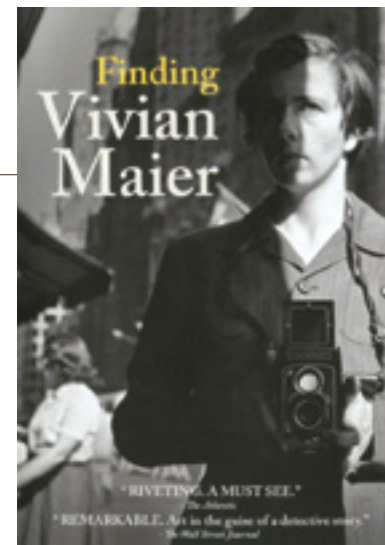
Adventure of Photography: Portraitists/Nudes

A look at how photography has captured the image of the collective conscience over one and a half centuries. *60 min.*

April 12

Finding Vivian Maier

Who was Vivian Maier? A mysterious and private woman who worked as a nanny for 40 years? Or was she the 20th century's greatest street photographer? The answer is simple: she was both. *83 min.*



April 19

Pedro E. Guerrero: A Photographer's Journey

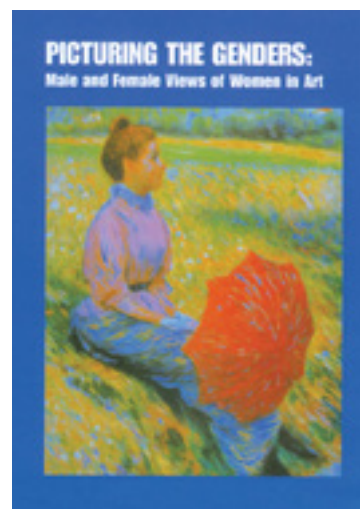
Discover the remarkable life and work of Pedro E. Guerrero (1917–2012), a Mexican American, born and raised in segregated Mesa, Arizona, who had an extraordinary international photography career. *60 min.*

April 26

Disfarmer: A Portrait of America

In the small mountain town of Heber Springs, Arkansas, a portrait photographer known as Mike Disfarmer captured the lives and emotions of the people of rural America during the two World Wars and the Great Depression. *52 min.*

For additional information on Education programming, contact the Education Department at 810.237.7314 or education@flintarts.org.



sheppy dog fund lecture

The Sheppy Dog Fund Lecture has been established to address the topics of art, religion and history prior to the 19th century, and is funded annually by the Sheppy Dog Fund, Dr. Alan Klein, Advisor.

The Fiery & the Fallen The Early History of Angels & Demons

Part I
April 19 • 6p

Part II
April 26 • 6p

FIA Theater



Guest Lecturer
Dr. Justin Sledge

Media Sponsor

WKAR

Angels and demons have inspired and haunted the imagination of the western world for thousands of years, yet their origin is mysterious. Unmentioned in the traditional account of creation found in Genesis, they light up the prophetic works of Ezekiel and Isaiah. Despite this obscurity, they pepper the art of the middle ages and are said to possess the souls of ancients and moderns alike.

What are these creatures? How did the idea of angels and demons develop over the ages? The tradition gives us a varied and often shocking vision of them: six-winged beings made of fire; powerful entities that descend from heaven to mate with human women; spirits left without bodies as the first Sabbath fell and God rested; frightening soldiers which guard the heavenly palaces; horrors which stalk in the darkness. How do we make sense of these legends? How did other ancient near eastern cultures influence the Israelite/Jewish conceptions of these entities?

Giovanni della Robbia
(attributed to)
Italian, 1469–1529
Figure of an Angel, late
15th/early 16th century
Tin-glazed earthenware
26 x 9 x 9 inches
Gift of Mrs. Viola E. Bray,
FIA 2005.153



Join Dr. Justin Sledge in a two-part lecture series on the early history of angels and demons. In the first, Dr. Sledge will trace the earliest Israelite, Egyptian, Mesopotamian and Zoroastrian accounts of these intriguing creatures. We will tour the rich tapestry of creatures said to act as intermediaries and messengers of the Gods visiting revelation and woe upon human kind.

In his second lecture, Dr. Sledge will take up the flowering of angels and demons around the time of the second Jewish Temple—from roughly the lifetime of Jesus up to the time of the writing of the Babylonian Talmud. It is during this period that angels and demons take the character of the entities well-known to us in mythology, lore, and pop culture.

Free to the public

book discussion

FIA book discussions focus on works of fiction and non-fiction related to art, art museums, or FIA collections. The first meeting for each book sets the stage by exploring artists and artwork related to the selection. Two weeks later, the book is discussed. These free programs are offered on Wednesdays at 1:30p.

The Danish Girl

By David Ebershoff

Part I: Art Lecture
March 22 • 1:30p
Part II: Book Discussion
April 5 • 1:30p

Isabel Hall

Set against the glitz and glamour of 1920s Copenhagen, Paris, and Dresden, this stunning first novel explores the boundaries of sex and gender, love and marriage, and the journey to become oneself.

Loosely inspired by a true story, this tender portrait of marriage asks: What do you do when the person you love has to change? It starts with a question, a simple favor asked by a wife of her husband while both are painting in their studio, setting off a transformation neither can anticipate. Uniting fact and fiction into an original romantic vision, *The Danish Girl* eloquently portrays the unique intimacy that defines every marriage and the remarkable story of Lili Elbe, a pioneer in transgender history, and the woman torn between loyalty to her marriage and her own ambitions and desires. *The Danish Girl's* lush prose and generous emotional insight make it, after the last page is turned, a deeply moving novel about one of the most passionate and unusual love stories of the twentieth century.

Free to the public



For additional information on Education programming, contact the Education Department at 810.237.7314 or education@flintarts.org.

family programs

Family programs enable parents and children to explore the visual arts at the FIA. They are designed for children ages four and up and accompanying adults, and are offered free of charge. Groups of six or more, please contact the Education Department to make a reservation.

Baby Tours

March 19 • 2p
April 30 • 2p

See how your child responds to art and find out how to help them develop visual literacy skills. Parents and caregivers with infants up to 18 months of age are welcome to join these FREE 30-minute Baby Tours.

Free to the public.



Spring Break Special

April 3-7 • 1p-4p
FIA Galleries & Studio 1

Students will find fun, creativity, and inspiration while learning from firsthand interaction with works of art in our galleries and making their own art in our studios. Recommended for children ages 6 and up, but all are welcome.

Free to the public.

Sponsor of
Spring Break
Special



Storytime with Art

April 4 & 6 • 11a-12p
FIA Galleries & Studio 1

Look at and talk about artwork in our galleries, listen to a related storybook, and create a work of art of your own in the studio. Recommended for children ages 3-5, but all are welcome.

Free to the public.

For additional information on Education programming, contact the Education Department at 810.237.7314 or education@flintarts.org.

contributions

The Flint Institute of Arts gratefully acknowledges the generosity of the following donors who have supported the Institute with contributions.

The following are gifts received from 11.12.16 – 1.13.17

Annual Appeal Gifts 11.12.16 - 1.13.17

Ms. Velma Adams
Mr. & Mrs. Ricardo Alfaro
Ms. Valarie Allen
Mrs. Dolores R. Allen
Mr. & Mrs. Andruszko & Family
Ms. Frances L. Ascencio
Mr. Steven S. Bailie
Dr. & Mrs. William D. Beck & Kristen
Dr. & Mrs. Henry Beckmeyer
Mrs. Doris Beebe
Mr. & Mrs. Stephen Bernstein
Dr. Morley M. Biesman
Ms. Jane M. Bingham
Ms. Bernie Bishop
Mr. & Mrs. Thom Bohnert
Ms. Susan Steiner Bolhouse
Mrs. Joyce E. Bolo
Mr. & Mrs. John A. Brancheau
Mr. & Mrs. Barry Braun
Mr. Leo Brennan
Ms. Ethel Bruce
Mr. & Mrs. Howard J. Bueche
Ms. Lois Callan
Mr. Christopher Carr
Ms. Sally Case
Mrs. Kay Cherry
Ms. Melba R. Clapp
Mr. & Mrs. Bruce T. Colasanti
Ms. Mary Coleman
Mr. & Mrs. Chapin Cook
Loretta Davis & Harold Ford
Mr. Durfee Day
Mrs. Rosemary R. DeCamp
Ms. Jeanne Dobs
Dort Fedral Credit Union
Mr. Robert F. Dueweke
Ms. Patricia S. Duffy
Mr. Ryan M. Eashoo
James C. Fabiano II
Mr. & Mrs. Michael A. Farella
Mr. & Mrs. Robert Florine
Mr. & Mrs. James P. Ford
Dr. & Mrs. Scott A. Garner
Ms. Patricia Gebhardt
Mr. Thomas M. Gervasi
Debra A. Golden-Steinman & Dr. Harold V. Steinman
Hank & Bonnie Graff
Mrs. Bobbie J. Greer

Dennis & June Haley
Ingrid G. Halling & Robert Thomas
Mr. & Mrs. Carl Hansen
Mr. & Mrs. Daniel S. Harrett
Mr. & Mrs. Joel H. Harris
Ms. Annetta Hendrickson
Mr. & Mrs. John B. Henry
Mr. Mark R. Holen & Ms. Linda M. Segura
Mr. Bradley Holland
Ms. Christine Hull
Ms. Lynne Hurand
Ms. Sara Hurand & Mr. Elie Weiss
Ms. Mary Kay Hurren
Dr. Susumu Inoue
Dr. Ernestine Jackson
Mr. Robert Jacobs
Mrs. Judith Jacobson
Mr. Kristopher Johns & Ms. Vanessa Ferguson
Ms. Jane M. Johnson
Mr. & Mrs. James N. Johnson
Mr. & Mrs. Raymond J. Kelly III
Mr. & Mrs. Jimmy King
Mr. & Mrs. Norman Kleiner
Mr. & Mrs. Jim Kolhoff
Ms. Chene Kopitz
Mr. & Mrs. Frederick L. Kump
Mr. & Mrs. Stephen S. Landaal
Mr. Lawrence N. Larson
Mrs. Sue Lauber
Mrs. Ruth Leder
Mrs. Linda LeMieux
Mr. & Mrs. Thomas B. Lillie
Mr. & Mrs. Kenneth Lindebrekke
Ms. Mary Lorenz
Tiffany & Bob Lovett
Mr. & Mrs. Glenn Lysinger
Ms. Doris Malfese
Ms. Jeanette R. Mansour & Mr. Joe Green
Mrs. Mary Markel
Ms. Carol Masse
Dr. & Mrs. Berton J. Mathias
Ms. Rosellen McAlear
Norm & Pam McCarthy
Mr. & Mrs. David S. McCredie
Mr. & Mrs. Ted Meadors
Mrs. Patricia Minshall
Ms. Barbara Mirsky
Mr. Thomas J. Mitchell
Mr. & Mrs. William H. Moeller
John & Pat Mucha
Dr. & Mrs. Kienan F. Murphy
Mr. & Mrs. Alexander C. Murray
Ms. Sharon Y. Naughton
Mr. & Ms. Tom Neuhard
Mr. Theodore Oldham

Mr. H. Michael Parker
 Ms. Jacqueline Piechowski
 Richard & Laurie Pierce
 Mrs. Janice G. Pike
 Dr. & Mrs. George D. Politis
 Ms. Frances J. Price
 Mrs. Fouad Rabiah
 Betty & Richard Ramsdell
 Ms. Sally L. Reigle
 Mr. & Mrs. Michael J. Riha
 Mr. Alfred Arnold & Mrs. Dolores
 M. Roat-Arnold
 Frank & Linda Roberts
 Mr. & Mrs. George Rosenberger
 Mr. & Mrs. Paul Rozycki
 Drs. Michael & Virginia Rucks
 Mr. & Mrs. Khalil M. Saab
 Dr. Russell G. Sandberg
 Ms. Grayce Scholt
 Dr. & Mrs. Frederick C. Schreiber
 Dr. & Mrs. Paul E. Schroeder
 Mr. & Mrs. Howard S. Schultz
 Mr. & Mrs. Curtis Seibert
 Chuck & Kathryn Sharbaugh
 Skaff Carpet & Furniture Co.
 Mr. & Mrs. Thomas Skunda
 Dr. Ernestine R. Smith
 Ms. Lynn Smith
 Mr. & Mrs. James Spangler
 Mrs. Sally Salay Stevens
 Miss Barbara Stewart
 Mr. Paul Stirling
 Dr. & Mrs. Thomas Svitkovich
 Ms. Christine Thomas
 Mrs. Ruth P. Thrash
 Mr. & Mrs. Gerald L. Walters
 Mr. & Mrs. Richard C. Weiermiller
 Dr. & Mrs. Jay A. Werschky
 Dr. & Mrs. James Williams
 Mr. & Mrs. Mike Wilson
 Dr. Sue Wisenberg & Ms. Donna
 Baker
 Ms. Kala Wood
 Mrs. Barbara A. Young

Annual Appeal Matching Gifts
 Bank of America
 Charles Stewart Mott Foundation

Special Gifts

To support the Art School
 Doris A. Sutton Irrevocable Trust

To support the Art School
 Endowment Fund
 Dr. & Mrs. Alexander Chan

Gift of an FIA Membership
 Ms. Marilyn M. Alvey for Kate
 Yaklin
 Ms. Roxanne Gabriel for Connie
 Parker
 Mr. Tommy Herrmann for Tom &
 Pam Herrmann
 Mr. & Mrs. Paul Johnson for Allen
 O'Dell & Luan Brownlee
 Ms. Diane Kelly for Virginia
 Gaffney
 Ms. Chene Koppitz for Jessica
 Hopkins & Jef Bourgeau
 Ms. Chene Koppitz for Tucker
 Petty
 Ms. Chene Koppitz for Trip Petty
 Ms. Chene Koppitz for Erin & Matt
 Gierlowski
 Mr. & Mrs. Wade Laine for
 Brooklyn Lambaria
 Mr. & Mrs. Bill Larsen for Marjorie
 Larsen
 Mr. & Mrs. Paul Maxwell for
 Mason DePouw & Anne Maxwell
 Mr. Paul Prange for Marie
 Hochstein
 Mrs. Fouad Rabiah for Beth &
 Donald Phillips
 Ms. Veronica Rochford for Sandra
 Crichton
 Ms. Patricia A. Sincok for Mary
 Jo Stilson
 Mr. & Mrs. David Stickel for
 Rennie Stickel
 Mrs. Mary Sutton for Lois Boyd
 Cindy, Andrew & Greg
 VandenBosch for Charl David

To support General Operating
 Fund
 Wang Family Charitable Fund

Grant to support General
 Operating
 Agnes Bower Charitable Trust

Trustee Initiated Grant to
 support the Mary Mallory Davis
 Endowment Fund for Purchases
 Arthur G. Bishop Charitable Trust
 as initiated by Robert Piper

Grant to support Art School
 Lampworking Glass Sculpture/
 Beadmaking Studio 2016
 Arthur G. Bishop Charitable Trust

Grant to support College Town
 16/17
 Arthur G. Bishop Charitable Trust

Grant to support the Glass Gallery
 & Studio
 Flint Cultural Center Foundation

Grant to support the FIA
 Collections Endowment in honor
 of John & Janice Henry
 Kommareddi Family Fund of
 the Community Foundation of
 Greater Flint

Grant to support FIA Programming
 Alan & Jean Weamer

Grant to support the Lighting 2017
 Jay & Marilyn Nelson of the
 Nelson Family Foundation

Sponsor of FIA Magazine 17/18
 Ms. Lynne Hurand

In Honor

In Honor of Donna J. Sivosky to
 support the START Educational
 Program

Ms. Nancy Busch
 David & Randee Pieper
 Ms. Kelsey Pieper
 Mr. Donald Sivosky
 Ms. Jordon Sivosky

In honor of Denise C. Morgan,
 Judith Jacobson, Mr. & Mrs. Gary
 Hurand

Anonymous

In Memory

In memory of Wm. Stefan Davidek
 Mr. & Mrs. John B. Henry
 Chuck & Kathryn Sharbaugh
 Dr. & Mrs. Milton J. Siegel

In memory of Arthur & Bess
 Hurand
 Ms. Carole A. Pappas

In memory of Bobbie Jones to
 support the Pottery Department
 Gary S. Jones, M.D. & Mary-Sue
 Tuuri
 Ms. Ann Tuuri-Cesarz

In memory of Bobbie Jones to
 support the Expansion Project
 Ms. Janet Pankey

In memory of Dennis Younger
 Ms. Sandra Applegate
 Mr. & Mrs. Christopher J. Dundas

Mr. & Mrs. John B. Henry
 Ms. Lynne Hurand
 Steve & Pamela Jadwin
 Mr. Mark Ortlieb & Ms. Jennifer
 Keller
 Dr. & Mrs. Frederick C. Schreiber
 Chuck & Kathryn Sharbaugh
 Mr. & Mrs. Robert J. VanDuyne

Additional Film Society Sponsor 16/17

Supporting Player (\$500)
 Ms. Carol Masse
 Dr. & Mrs. Mark Plucer

Additional Film Society Members 16/17

Since 11.12.16 – 1.13.17

Ms. Nora G. Fisher
 Ms. Janet A. Schultz
 Mr. Mark A. Walters

Additional Print Club Members 16/17

Since 11.12.16 – 1.13.17

Mr. & Mrs. Charles Clarke
 Mr. & Mrs. F. James Cummins
 Mr. & Mrs. Joseph Doherty
 Mr. & Mrs. Harry L. Eiferle, Jr.
 Ms. Ronda W. Goldfarb
 Mr. Scott A. Hill & Mr. Russell
 Sutherland
 Mr. & Mrs. Wes Kohn
 Mr. H. Michael Parker
 Dr. & Mrs. Mark Plucer
 Mr. & Mrs. Vincent Price, Jr.
 Mr. & Mrs. Brian Renaud
 Mr. & Mrs. Jeff Rolf

Event Sponsors

Since 11.12.16 -- 1.13.17

Art on Tap
 Fifth Third Bank
 Genesys Health Systems
 Whigville Market

Community Gala
 Alpha Kappa Alpha Sorority, Inc. -
 Zeta Beta Omega

James & Kathryn Boles
 Mrs. Edmund Brownell
 Communities First, Inc.
 Community Foundation of Greater
 Flint
 Cracker Barrel Old Country Store,
 Inc.
 Creative Expressions Dance
 Studio
 Delta Sigma Theta Sorority, Inc.
 Downtown Development Authority
 Flint District Library
 Greater Flint Chapter of the
 Pierians, Inc.
 Hamilton Community Health
 Network
 Janice T. Harden
 Louis A. Hawkins
 Gary & Carol Hurand
 Lynne Hurand
 Jamile T. Lawand
 Theresa A. Stephens-Lock
 Dr. Ramotsumi & Velynda
 Makhene
 Georgia Terrell McCall
 Mr. Thomas J. Mitchell
 Mott Community College
 Kienan & Elizabeth Murphy
 Vijay Naraparaju
 Neiman Marcus
 Gail R. Buckner Odom
 PNC Bank
 The Rutherford Group
 Dr. Sharon A. Simeon
 Jim & Patt Spangler
 Ernelle Taylor
 The Cho\$en Few Corporation
 The Rutherford Group
 University of Michigan-Flint
 Valley Area Agency on Aging

The Party
 Scott B. Karlene, M.D. & Kevin J.
 Gaffney, M.D. Dermatology

Wine Tasting
 Bennett Communication Solutions
 Dawn Hausch-Cooper, Ameriprise
 Financial
 Flint Cultural Center Foundation
 William Hentgen
 Lewis & Knopf, CPAs, P.C.
 Mainstay Capital Management
 McCredie Insurance Agency, Inc.
 McGuirk Realty, Inc.
 Mr. Thomas J. Mitchell
 Attorney Matthew Norwood
 Olmsted Associates, Inc.
 Raymond James & Associates

Sapphire Blue
 Leo & Elizabeth Solano
 Werschky & Lewis Family
 Dentistry

membership

Membership contributions are a significant part of the Flint Institute of Arts operating income.

Levels

Youth (2.5–12)	\$20
Student (13 to college)	\$20
Individual	\$30
Dual [†]	\$40
Family ^{††}	\$50
Sustainer ^{††}	\$100
Sponsor ^{††}	\$250
Donor ^{††}	\$500
Rubens Society ^{††}	\$1,000+

† 2 adults

†† 2 adults + children 18 & under

* An asterisk indicates the names of those who have upgraded their memberships with a larger contribution.

+ A plus indicates the names of Friends of Modern Art (FOMA) members.

△ A triangle indicates the names of Founders Society members.

The following are members who have renewed from 11.12.16 – 1.9.17

Rubens Society

(\$1,000 & above annually)

Business

Hubbard Supply Co.
Main Manufacturing Products

Individual

Mrs. Beverly Bernard
Ms. Susan Steiner Bolhouse & Mrs. William S. Ballenger II
Mr. Stewart Bolinger*
Mr. & Mrs. Chapin Cook
Mr. Donald Davenport
Mr. & Mrs. Louis Emmert
Mr. & Mrs. Neal Hegarty
Mr. & Mrs. Joseph Higgins
Mr. & Mrs. Gary J. Hurand+△
Ms. Lynne Hurand+△
Mrs. Judith Jacobson
Michael & Kay Kelly
Mr. & Mrs. Raymond J. Kelly III
Mrs. Harriet B. Kenworthy
Albert & Barbara Koegel
Ms. Kathryn Koegel+△
Mrs. Virginia R. Landaal
Mr. Max Lepler & Mr. Rex L. Dotson
Ms. Jeanette R. Mansour & Mr. Joe Green
Drs. Bobby & Nita Mukkamala+△
Edward & Elizabeth Neithercut
Mr. & Mrs. Jay Nelson
Mr. Randolph P. Piper & Mrs. Susan I. Stuewer+
Mr. Robert S. Piper+
Dr. & Mrs. Mark Plucer+△
Mrs. Fouad Rabiah
Mr. & Mrs. Michael J. Riha+△
Mr. & Mrs. Jeffrey D. Rocco
Drs. Michael & Virginia Rucks+
Mr. & Mrs. John P. Siler+△
Mr. & Mrs. Thomas Townsend*
Dr. D.J. Trela & Dr. David Bailey+△
Mr. & Mrs. Ridgway H. White

Business Members

Business Supporter
(\$250 annually)
3Sixty Interactive
Vogt's Flowers

Individual Members

Donor

(\$500 annually)
Rev. Reginald V. Lancaster & Dr. Karen R. Wilkinson
Byron & Margie Latter+
Mr. Paul Sears+
Ms. Lesley Slavitt & Mr. Doug Knerr*+

Sponsor

(\$250 annually)
Dr. & Mrs. William M. Bernard+
Mr. & Mrs. Stephen Bernstein+
Mr. & Mrs. Michael Bourke
Greg & Karen Eason
Mr. & Mrs. Joseph F. Foos+△
Mr. & Mrs. Jeffrey Hurand
Dr. & Mrs. Milton J. Siegel+△
Mr. Mark A. Walters*+△
Mr. & Mrs. Alan Weamer

Sustainer

(\$100 annually)
Mr. & Mrs. Robert A. Ackerman+
Mr. & Mrs. Bill Bader
Mr. David J. Barkey△
Dr. & Mrs. William D. Beck & Kristen
Ms. Jane M. Bingham+△
Mr. & Mrs. Al Bosley*
Mr. & Ms. Roger H. Brown
Mr. & Mrs. Tom E. Butts+
Mr. & Mrs. Daniel Cruz
Ms. Charl David+
Ms. Dorothy Gae Davis
Mr. & Mrs. Robert W. Devereaux
Mrs. Cheri Dickinson+
Mrs. Margaret E. Diener+
Mr. Robert F. Dueweke△
Mr. & Mrs. Robert Eastman
Mr. & Mrs. Bennett Engelman+△
Ms. Tina Filoromo△
Dr. Donna Fry & Dr. Eric Freedman
Ms. Kathleen George
Mr. & Mrs. Christopher Giroux
Mr. & Mrs. Tom Gisewhite+△
Mrs. Roberta L. Goergen
Debra A. Golden-Steinman & Dr. Harold V. Steinman+△
Mr. & Mrs. Melvin E. Gregory
Mr. & Mrs. Eugene B. Griffel
Mr. & Mrs. Carl Hansen+
Mr. & Mrs. Richard S. Harris△
Mr. & Mrs. Kenneth R. Henley△
Dr. & Mrs. John V. Hinterman
Mr. & Mrs. Michael Hinterman△
Mrs. Martha B. Hopkins

Mr. & Mrs. Francis Hudson+
Mr. & Mrs. Fred Huntzicker
Mr. & Mrs. John C. Kippe+
Mr. & Mrs. Norman Kleiner
Mr. & Mrs. Jim Kolhoff+△
Mr. & Mrs. Frederick L. Kump
Mr. & Mrs. Stephen Larzelere-Kellermann+△
Stephen & Kathleen Leist+
Mr. David M. Lengyel+△
Mr. & Mrs. Larry Loje
Mr. & Mrs. Laurence E. MacDonald+
Mr. & Mrs. David C. Miller
Mrs. Helen G. Millhouse
Mr. & Mrs. Edward A. Mitchell
Mr. & Mrs. Michael Munger
Mr. Jim Naddeo
Ms. Carolyn Owen*
Mr. & Mrs. David Owen-Smith
Mr. Keith A. Palka
Ms. Carole A. Pappas+
Ms. Jeanne Pepper & Mr. Thomas Herman+△
Ms. Patti Perkins & Mr. Wayne Say
Mr. & Mrs. Lawrence F. Piper
Dr. & Mrs. George D. Politis+
Mr. & Mrs. James P. Ricker
Frank & Linda Roberts+△
Mr. & Mrs. Ralph R. Rossell+
Richard & Katherine Saunders
Mr. & Mrs. Howard S. Schultz+△
Mr. & Mrs. Robert L. Shegos
Ms. Sheila R. Smith+△
Mr. & Mrs. Nathan Spencer
Ms. Shelley R. Spivack & Mr. Justin Scanlon+
Miss Barbara Stewart
Mr. Paul Stirling+△
Mrs. Nancy Swords & Mr. Chris Hopp*+△
Mr. & Mrs. William Vredevoogd
Ms. Christine Waters & Mr. Martin Anderson
Dr. & Mrs. Stuart B. Weiner
Mr. & Mrs. Robert A. Wood△
Mr. & Mrs. Marvin Zmudzczynski

Family
(\$50 annually)
Mr. & Mrs. Robert Aguirre
Mr. & Mrs. T.C. Alarie*
Mr. & Mrs. Ricardo Alfaro+
Mr. & Mrs. Luay Alkotob
Mr. Tim Bennett
Ms. Sandra A. Branch
Mr. & Mrs. John C. Briggs+
Mr. & Mrs. Kelly J. Brisbin

Mr. & Mrs. Robert Brown+△
Ms. Precious Buckner
Mr. & Mrs. Michael Burel
Mr. & Mrs. Sylvester Collins
Mr. Joseph Coriaty
Mrs. Paula Crossnoe
Mr. & Mrs. Peter Daunt
Ms. Sheila Denny-Fong
Carol Egloff+△
Mr. Jim Erwin & Ms. Diane Root
David & Jill Esau
Mrs. Tracy A. Fessler
Ms. Nora G. Fisher+
Mr. & Mrs. Roger Gilmour+
Ms. Ronda W. Goldfarb
Mr. & Mrs. Gordon Grandy*+
Mr. & Mrs. Kent Greenfelder
Mr. & Mrs. Lawrence Hackett
Ms. Janice T. Harden+
Mr. & Mrs. Carlos Hernandez
Dr. & Mrs. Huseyin R. Hizioglu+△
Ms. Marie Hochstein
Mr. & Mrs. Robert E. Iden
Ms. Elizabeth Kaplan & Mr. Rex Donahay
Mr. & Mrs. Franklin H. Kasle
Mr. & Mrs. Russell Kirksey
Mr. & Mrs. Wes Kohn
Mr. Alvern Lock & Mrs. Theresa Stephens-Lock
Mr. & Mrs. Steven Low*+△
Mr. Keith McGrady
Mrs. Linda Murphy
Mr. & Mrs. Ed O'Mara
Ms. Jacquie Osborn & Mr. Jim Osborn*
Ms. Judith Perez
Dr. Paul J. Racine
Mr. & Mrs. Brian Renaud
Mr. & Mrs. Bruce Richardson
Mr. & Mrs. Brian Royce*+
Mr. Allen Salyer
Mr. & Mrs. Frank A. Sanders△
Mr. Marshall H. Sanders Jr. & Dr. Sharon Simeon
Mrs. Mary Shumsky*
Mr. & Mrs. Daniel Smith+
Mr. & Mrs. Norm Stewart
Mr. & Mrs. Bruce Trevithick+△
Dr. Mariann Watson & Mr. Thomas Shanahan*

Dual
(\$40 annually)
Ms. Marilyn M. Alvey△
Ms. Carol Andrews-Goyt & Mr. Terry R. Goyt
Mr. Joel Arnold*

Dr. & Mrs. Danny Aronovitz
Mr. & Mrs. John Baker
Mr. Richard Barber & Ms. Sharon Baker
Mr. Wayne Barber & Mr. Rich Fitz Gary & Maureen Bates+
Mr. & Mrs. Martin Bernstein
Mr. & Mrs. Thom Bohnert+
Ms. Luan Brownlee & Mr. Allen O'Dell
Ms. Renate Bueche
Mr. Wade Carver & Ms. Heather Meier+
Mr. & Mrs. David Coburn+
Virgil & Sheryl Cope+
Mr. & Mrs. Gary Cox+Δ
Mr. & Mrs. Fred Cross+Δ
Ms. Joan Donovan & Mr. Joey Donovan
Mrs. Brenda Eisele
Mrs. Holly Elrod
Mr. & Mrs. Robert Florine
Ms. Deb Gustafson & Ms. Sue Weston+
Mrs. Mary Jo Hobart-Parks
Ms. Sandra Holloway & Miss Lauren Holloway
Mr. Kristopher Johns & Ms. Vanessa Ferguson+
Dr. David M. Johnston+
Mr. & Mrs. Paul Jordan
Mr. & Mrs. William A. Karas II
Ms. Nancy Kehoe & Mr. Dennis Kehoe+
Mr. Douglas Koch+
Mr. & Mrs. Michael Koviack
Mr. & Mrs. Lee LaVictoire+
Ms. Rebecca Letterman & Ms. Sarah Letterman
Mr. & Mrs. Kenneth Lindebrekke+
Mr. David T. Lindsey & Mrs. Jeanette Lindsey+
Ms. Nancy MacDonald
Mr. & Mrs. Muir McKerracher
Ms. Connie Parker
Mr. & Mrs. Kevin Payne
Mr. & Mrs. Michael Phillips
Mr. Richard Pierce & Ms. Laurie Pierce*
Mr. & Mrs. William Pyles+
Mr. & Mrs. Richard Reed
Mr. & Mrs. Melvyn R. Rettenmund
Mr. & Ms. Daniel Richards
Mr. Randall Scott & Mrs. Elizabeth Jones
Mr. John J. Mrozik & Ms. Heather Sisto

Mr. & Mrs. Edward Strong+Δ
Rev. Tom & Mrs. Beth Wachterhauser+
Mr. & Mrs. Gerald L. Walters
Mr. & Mrs. William WhiteΔ

Individual

(\$30 annually)
Mrs. Barbara Asa
Ms. Roseanne Bagale
Ms. Shirley Bannatyne
Ms. Heather Bartlett
Ms. Dawn M. Bentley
Ms. Mary Bluteau
Ms. Kimberly A. Bodette
Ms. Mary Ann Boyd
Mrs. Beverly Calkins
Miss Anne Cole
Mr. Thomas H. Crooks
Mr. Edwin D. Custer+
Mrs. Elaine DeCou
Ms. Marian DeCourval
Ms. Shelia Dirrim+
Mrs. Kimberly Donahue+
Ms. Christine Dugas
Mr. Fredrick Ennis+Δ
Miss Samantha Farah+
Ms. Janine Ferguson
Ms. Virginia Gaffney+
Ms. Kathleen George+Δ
Mr. Jason Gibbs
Mr. John A. Giolitti
Ms. Grace Glass
Ms. Donna Gohs
Ms. Mary L. Grossklaus+
Ms. Angela Hamilton
Mrs. Nancy R. Hawley
Ms. Carol Higgins
Ms. Bonnie Hill
Ms. Donna Hines
Mr. Sidney Horton Jr.
Dr. John A. Howland
Mrs. Gail D. Hutchison
Miss Esther M. Jacob+
Mrs. Linda Jaworski
Mrs. Rita MacGregor Jeric
Mr. Robert V. Jewell
Mr. Richard Johnston
Mrs. Ellen Kissel+
Ms. Rosemary A. Kowalske
Mrs. Marjorie J. Larsen
Ms. Betty Leavitt
Ms. Teresa A. Littlejohn+Δ
Mrs. Cheryl McPherson
Mr. Herb Merrell+
Ms. Jill Michelle
Ms. Sky Mikinak

Ms. Junko Miller+
Ms. Kathleen Moore
Ms. Frederica E. Muller
Ms. Sarah Murray+
Dr. James Neubeck
Ms. Jolene Padgett
Mr. Blake Pagnier
Miss Teresa Porteous+Δ
Ms. Leanne Pratt
Ms. Heidi Ray+
Ms. Rose Mary Reiz
Ms. Bertha Rhodes
Ms. Suzanne Rosser
Ms. Mary Bluteau
Mrs. Patti L. Rowe
Mrs. Jane Schepler
Mrs. Margrit Schlatter
Ms. Jacqueline Scott+Δ
Ms. Patricia Shepard
Mr. Raymond Solack
Mr. David Tait
Ms. Karen Tomlinson
Ms. Shelia Troyer
Mr. & Mrs. Donald Walker
Mrs. Deborah Wheeler
Mrs. Helen Zimmerman

Student

(\$20 annually)
Miss Emily Harnden*
Skyelar Herriman*
Miss Rachel Landes

Youth

(\$20 annually)
Parker Roeser+Δ
Addisen Timpf
Ella Timpf
Olivia Timpf

The following are members who have joined from

11.12.16 – 1.9.17

Rubens Society

(\$1,000 & above annually)

Business

American Machining, Inc.

Individual Members

Sponsor

(\$250 annually)

Mr. Joseph J. Kochauek

Sustainer

(\$100 annually)

Ms. Denise Heath

Ms. Gail R. Odom

Mr. & Dr. Jay Nussel

Mr. & Mrs. Matt Gierlowski+Δ

Family

(\$50 annually)

Ms. Margaret Adams

Mrs. Diana Allard

Mrs. TaShanda K. Arthur

Mr. & Mrs. Luke Bueche

Ms. Audrey E. Dismond

Mr. & Mrs. Joseph Doherty

Mr. Shawn Fryzel

Mr. & Mrs. Tom Herrmann

Mr. & Mrs. Jordan Herron

Mr. Scott A. Hill & Mr. Russell

Sutherland

Mr. Benjamin Jones

Mrs. Lori Lee

Mr. & Mrs. Robert Lenoir

Mr. & Ms. Myrl Paschke

Mrs. Lula L. Pea

Mr. & Mrs. Todd Petty

Mr. & Mrs. Donald Phillips

Ms. Elsie Reilly

Mr. Erich Riehl & Ms. Cassandra Riehl

Ms. Brenda R. Williams

Dual

(\$40 annually)

Mr. & Mrs. Eric Caldwell+

Mr. & Mrs. Robert Campbell

Mr. & Mrs. Michael Carr

Mr. & Mrs. Benjamin Clevenger

Mr. Mason DePouw & Ms. Anne Maxwell

Father Paul J. Donnelly
Mrs. Susan Foote & Ms. Jennifer Betts
Dr. Petros Gheresus & Mrs. Lestine Gheresus
Ms. Jessica Hopkins & Mr. Jef Bourgeau
Mrs. Jennie Main
Mr. Bob Patterson
Mr. Rick Rathke & Ms. Stephanie Leech
Mr. David Rendel & Ms. Gillian Bess
Mr. & Mrs. Casey Schaub+
Mr. & Mrs. Jack Sustic
Mr. & Mrs. Tim Thill+

Individual

(\$30 annually)

Ms. Diann Selleck

Ms. Donna Hewitt

Ms. Heather Quiroz

Mrs. Jessica Billings

Mr. Jonathan Smith

Ms. Julie Hall

Ms. Karen S. Brown+Δ

Ms. Lois Boyd

Mrs. Magali Maus

Mrs. Marcia Dicks

Ms. Mary Jo Stilson

Mrs. Mary Sutton

Ms. Melinda Trowsse

Mr. Mike Zelle

Ms. Raquel Thueme

Mrs. Renee Crutcher

Ms. Sally Glover

Ms. Sandra Crichton+Δ

Ms. Sarah Parker

Mr. Timothy Utter

Student

(\$20 annually)

Ms. Lana Abdole

Youth

(\$20 annually)

Alejandra Lason

Anna Roche

Luhellier

Averee Phelps

Brooklyn Lambaria

Cameron Roeser

Emerson Roeser

Ethan Delange

Isaiah Buchanan-Curry

Kate Yaklin

Lucy Billings

Maddie Sauvie

Rennie Stickle

Rylee Girod
Savannah Collick
Trip Petty
Tucker Petty

art sales & rental gallery

March/April Featured Artist

Alyssa Minatel

Artist Reception

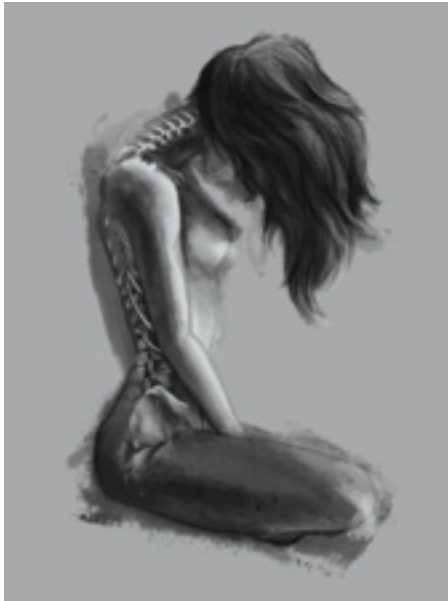
March 12 • 1p–3p

Alyssa Minatel's exhibition provides a glimpse into her medical field aspirations. This collection offers a departure from her plein air work, as seen at "Wet Paint Day," and other professional or commissioned pieces. As an award-winning local artist, she enjoys experimenting with multiple mediums while staying true to her detail-oriented roots.

After participating in local art programs, she chose Kendall College of Art & Design, from which she will graduate in 2017 with a BFA in Medical Illustration. Her primary goal is to become an editorial artist, capturing anatomical accuracy and providing educational images for various medical applications.

This show combines her medical illustration studies with her love of the human body, utilizing her passion for both digital and traditional art forms. The artwork is created via digital painting and then printed on canvas. Once printed, traditional art materials, such as oil paint, are used to enhance various parts of the artwork.

Minatel seeks to demonstrate the endless possibilities available through this mix of digital and traditional art forms. Her femme fatale-inspired show features several pieces exemplifying the female figure and the beauty of the anatomy held within.



Alyssa Minatel
Reflect (Work in Progress), 2017
Oil, digital print on canvas
24 x 18 inches

Gallery Hours

Mon–Sat, 10a–5p
Sun, 1p–5p
or by appointment

Gallery Contact

810.237.7321



founders travel

Spotlight on Paris

May 23–29, 2017

7 days • 5 breakfasts • 2 dinners

\$4399* per person (double occupancy)
Call for rates on bookings made after 1/31/17



- See highlights of Paris your way by motor coach or metro
- Savor dinner at the Eiffel Tower, featuring wonderful French cuisine and breathtaking views of Paris
- Glide down the Seine River on a romantic river cruise surrounded by the glittering city skyline
- Explore the Louvre's priceless treasures
- Learn about Versailles history, architecture, and gardens
- Enjoy ample free time to explore Paris independently

For reservations or more information,

contact Ann Chan at 810.239.1356 or Diane Roberts at 810.629.4270, ext. 201.

* Included in price: round trip air from the airport, air taxes, fees/surcharges, and hotel transfers. Not included in price: cancellation waiver and insurance of \$280 per person. All rates are per person and are subject to change, based on air inclusive package from Flint.

Southern Italy & Sicily

November 2–13, 2017

12 days • 10 breakfasts • 6 dinners

\$4499* per person (double occupancy)

Powerpoint Presentation

April 19, 2017 @ 3p

FIA Board Room

RSVP to Ann Chan at 810.239.1356

- Uncover Sicily's Moorish and Norman influences that intertwine with Greek and Roman ruins
- Explore Agrigento's ancient Valley of the Temples
- Travel to the historic hilltop town of Taormina
- Stop at a local winery in Southern Italy, complete with wine tasting and a dinner featuring regional specialties
- Explore the ancient town of Sassi di Matera, known for its cave dwellings
- Spend time in the mystical town of Alberobello, with its unusual cone-shaped roofed homes known as "trulli"
- Discover spectacular Mt. Etna Volcano National Park
- In Pompeii, walk in the footsteps of ancient Romans who perished in the foothills of Mount Vesuvius

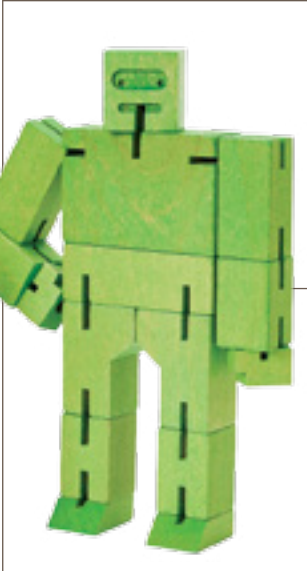


A portion of ticket proceeds support FIA programs and exhibitions.

introducing greenery



Every year, Pantone® releases a color of the year that it predicts will be at the forefront of trends in design, pop culture, fashion, and art. The color is an expression of mood and attitude, and this year's selection, Greenery, is no different. Symbolizing new beginnings and vitality, spring is a perfect time to embrace this vibrant color and its meaning. The FIA Museum Shop has an array of merchandise to assist you in adding a little Greenery to your life.



The FIA Museum Shop is the only place you can purchase catalogues for *Women of a New Tribe*. Stop in and get yours before they're gone!

Members always receive a 10% discount on Museum Shop purchases.

MUSEUM SHOP

Mon-Sat: 10a-5p*
Sun: 1p-5p
* The Museum Shop is open late for select special events.

Mission: to advance the understanding and appreciation of art for all through collections, exhibitions, and educational programs.

The FIA Art School offers fall, winter and summer sessions for ages 2.5 through adult. Drawing, painting, sculpture, ceramics, weaving, and photography are among the classes offered. Non-members may call to receive a class brochure at 810.237.7315.

Benefits and privileges of FIA membership include 10% discount in the Museum Shop and The Palette Café; a 20% discount and early registration privileges on Art School classes; discounts on ticketed events; free admission to temporary exhibitions; invitations to opening receptions, lectures, and special events; FIA Magazine subscription; recognition in the FIA Magazine and Annual Report and inclusion in two reciprocal membership programs for members at the \$100 level and above.

Rubens Society Members are individuals and businesses supporting FIA membership at the \$1,000 level and higher and are invited to three exclusive events each year.

The Flint Institute of Arts is a non-profit, equal opportunity employer, and provides programs and services without regard to race, color, religion, national origin, age, sex or handicap.



Operating support for the Flint Institute of Arts is provided in part by the Charles Stewart Mott Foundation.



FIA Exhibitions and Programs are made possible in part with the support of the Michigan Council for Arts and Cultural Affairs, a partner agency of the National Endowment for the Arts.



This magazine, made possible through a generous donation by Lynne Hurand, is published five times per year for mailing to FIA members, museums, and libraries around the country.

- Board of Trustees**
- Dean Yeotis, *President*
 - Thomas J. Mitchell, *First Vice-President*
 - Louis A. Hawkins, *Second Vice-President*
 - Kathy Boles, *Secretary*
 - Robert S. Piper, *Treasurer*
 - Eleanor E. Brownell
 - Mona Hardas
 - Janice T. Harden
 - Lynne Hurand
 - Raymond J. Kelly III
 - Alan Klein
 - Jimmy King
 - Jamile Lawand
 - Thomas B. Lillie
 - Bill Moeller
 - Elizabeth S. Murphy
 - Jay Nelson
 - Ira Rutherford
 - Michael Rucks
 - Elisabeth Saab
 - Martha Sanford
 - Sheila Smith, *Founders Society President*
 - Patt Spangler
 - Lynne A. Taft-Draper, *FOMA President*
 - David T. Taylor
 - Ann Walch-Chan
 - Jan Werschky

- FCCC Board Representatives**
- Amy Fugate
 - D.J. Trella

- Honorary Trustee**
- Elizabeth Neithercut

- Administration**
- John B. Henry, *Executive Director*
 - Michael A. Melenbrink, *Director of Finance & Administration*
 - Kathryn K. Sharbaugh, *Director of Development*
 - Tracee J. Glab, *Curator of Collections & Exhibitions*
 - Monique M. Desormeau, *Curator of Education*
 - Donovan Entreklin, *Director of the Art School*
 - Sarah Mullane, *Director of Member & Guest Relations*



FLINT INSTITUTE OF ARTS

1120 E. Kearsley St.
Flint, MI 48503



seasonal
selections

In March and April, enjoy soups, stews, sandwiches, and salads. The Palette Café can also cater your St. Patrick's Day or Easter holiday celebrations, as well as any special event. Please contact Antwain Trimble at atrimble@flintarts.org or 810.234.1695 for more information.



Members always
receive a 10% discount
at The Palette Café.

Hours

Mon–Fri	9a–5p*
Saturday	10a–5p*
Sunday	1p–5p

* *The Palette Café is open
extended hours for select
special events.*