



FLINT INSTITUTE OF ARTS

1120 E. Kearsley St.
Flint, MI 48503

Non-Profit Org.
U.S. Postage
PAID
Flint, MI
Permit 140

members
magazine

MAY-AUG 2010

FLINT INSTITUTE OF ARTS

the café



Peach Mint Lemonade

This newest beverage, developed by FIA baristas, is a wonderful mix of all things summer. Let the taste of fresh-squeezed lemons, leafy mint leaves, and juicy ripe peaches take you to a place of utter bliss. The *Peach Mint Lemonade* is a perfect complement to any summer day spent at the museum.

We Proudly Brew
STARBUCKS COFFEE



Members always receive a 10% discount at The Café.

Hours

Mon-Wed & Fri	9a-5p*
Thursday	9a-9p*
Saturday	10a-5p*
Sunday	1p-5p

*The Café is open extended hours for select special events.



from the director	2
exhibitions	3–5
video gallery	6
featured acquisition	7
acquisitions	8
art on loan	9
calendar	10
films	11–12
news & programs	13–16
education	17–18
art school	19–20
membership	21–24
contributions	25–26
art sales & rental gallery	27–28
founders travel	28
museum shop	29

contents

Board of Trustees

Elizabeth S. Murphy	<i>President</i>
Mark L. Lippincott	<i>First Vice-President</i>
Timothy Sanford	<i>Second Vice-President</i>
Samuel M. Harris	<i>Secretary</i>
F. James Cummins	<i>Treasurer</i>
Louis A. Hawkins	<i>Immediate Past-President</i>
Susan Steiner Bolhouse	
Katharine W. Eiferle	
Chris Flores	
Arminda Garcia	
Ayman Haidar	
Armando Hernandez	
Lynne Hurand	
Pete Hutchison	
Chris Kelly, Jr.	
Christopher S. Kelly, Sr.	
Linda LeMieux	
Diane Lindholm	
Robert S. Piper	
Marcus Randolph	
Michael Rucks	
Ira A. Rutherford	
Clinton A. Sampson	
Grayce Scholt	
Phyllis Sykes	
Mary Ann Tremaine	
Jan Werschky	
Claire M. White	
Karen Williams Weaver	

Honorary Trustee

Elizabeth Neithercut

Administration

John B. Henry, III	<i>Director</i>
Michael A. Melenbrink	<i>Assistant Director of Finance & Administration</i>
Kathryn K. Sharbaugh	<i>Assistant Director of Development</i>
Michael D. Martin	<i>Coordinator of Collections & Exhibitions</i>
Monique M. Desormeau	<i>Curator of Education</i>
Addie Langford	<i>Assistant Director of the Art School</i>

If you have visited the Flint Institute of Arts recently, you may have noticed among the loyal patrons who regularly attend events, a lot of people you have not seen before. That's because the FIA has introduced over the last couple of years many attractive and diverse programs and events that are greatly expanding our audience. Exhibitions that feature the most important and popular artists from around the world like the *Masterpieces of European Painting*, the *Landscapes from the Age of Impressionism*, the *Mary Lee Bendolph*, *Gee's Bend Quilts*, and *Beyond* and the *Dale Chihuly: Seaforms* have great appeal. Lectures by some of the most noteworthy personalities in the art-world, award winning films, family programs, and fun-filled after-hours parties also have become popular attractions. As a result, the FIA is now a destination for many who live beyond the county.

With the events planned for spring and summer, the trend should continue. Beginning on May 23 and continuing through August 15, the FIA will be the only Midwest venue for renowned glass master, Lino Tagliapietra. Tagliapietra is widely revered as the maestro of glassblowing, an inspiring teacher and the elder statesman linking the glass centers of Venice, Italy and the Pacific Northwest. Dale Chihuly is among the well-known artists who Tagliapietra has greatly influenced.

Complementing the 165 work collection will be an exhibition of 40 of the finest leaded glass lamps by Louis Comfort Tiffany. Reproductions of the lamps have been so popular, it is hard for many people to know an authentic Tiffany when they see

one. This extraordinary collection leaves no doubt about the magical power and beauty of the real thing. Both exhibitions are sure to appeal to audiences far and wide.



John B. Henry, III
Director

The popular Gala events staged for the openings of special exhibitions, attract both long-time patrons and first-time visitors. The lavish affairs offer opportunities to see great art, eat good food, enjoy lively entertainment, and socialize with the most interesting people. The year's biggest Gala is scheduled for May 22, the night before the *Lino Tagliapietra in Retrospect* and the *Tiffany Lamps* exhibitions open to the public. Called *The Party*, the event is sure to live up to its name with the most sumptuous food and surprise entertainment that can only be described as "a night to remember." What's more, Maestro Tagliapietra will be in attendance.

So, mark your calendars and plan not to miss any of the exciting events scheduled for the coming months. I look forward to seeing you, and be sure to bring a friend.

Cover Image From the exhibition *Lino Tagliapietra in Retrospect: A Modern Renaissance in Italian Glass*

Lino Tagliapietra
Italian, b. 1934
Mandara
blown glass, 2006
22 3/4 x 15 3/4 x 7 1/2 inches
Organized by Museum of Glass,
Tacoma, Washington

Lino Tagliapietra in Retrospect

A Modern Renaissance in Italian Glass

5.23.10 – 8.15.10

Hodge & Temporary Exhibition Galleries

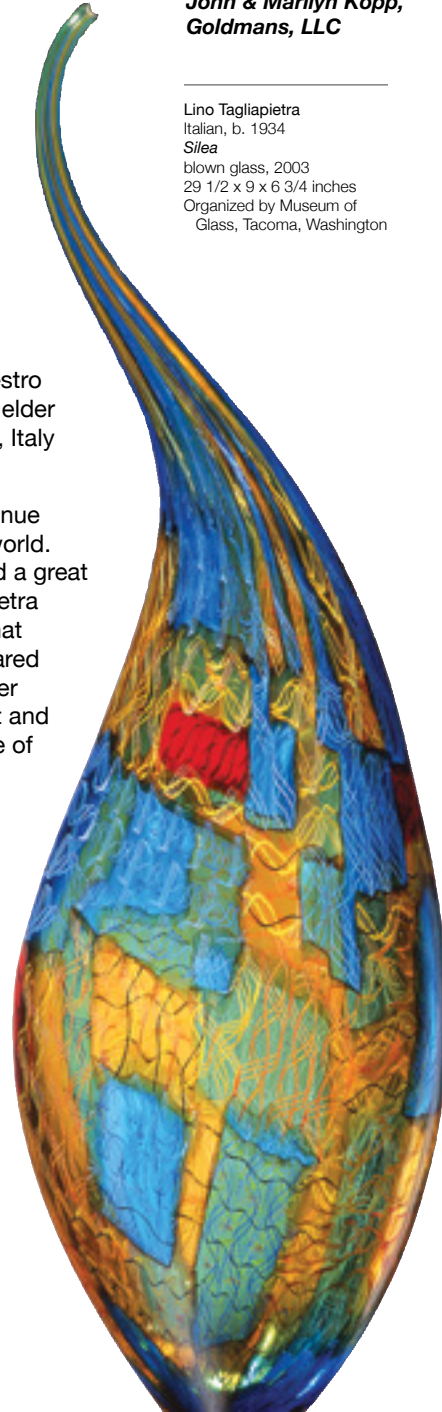
Lino Tagliapietra is widely revered as the maestro of glassblowing, an inspiring teacher and the elder statesman linking the glass centers of Venice, Italy and the Pacific Northwest.

Tagliapietra's artistic imagery and vision continue to influence Studio Glass artists around the world. Among the well-known artists that he has had a great influence on is Dale Chihuly. In 1979, Tagliapietra came to Pilchuck Glass School, the school that Chihuly began. Tagliapietra unhesitatingly shared his expertise with Dale Chihuly as well as other artists worldwide, universally elevating the art and craft of glassmaking and changing the course of contemporary glass.

This exhibition is the first comprehensive retrospective of Tagliapietra's art and career. It represents not only the pivotal and renowned series of artistic work, but also designs made for industry and private objects that have never been exhibited. It includes 165 objects acquired from the artist's own collection and collections around the world.

Selections in the exhibition range from large works and major installations, to smaller works such as goblets and small vessels. Also included in the exhibition are several collaborations with other artists like Dan Dailey and Marina Angelin.

> For related event and lecture, see pages 14 and 15.



Sponsored by
**John & Marilyn Kopp,
Goldmans, LLC**

Lino Tagliapietra
Italian, b. 1934
Silea
blown glass, 2003
29 1/2 x 9 x 6 3/4 inches
Organized by Museum of
Glass, Tacoma, Washington

Tiffany Lamps

Articles of Utility, Objects of Art

5.23.10 – 8.15.10

Johnson & Rabiah Galleries

Sponsored by
Citizens Bank

Tiffany Lamps: Articles of Utility, Objects of Art celebrates Louis Comfort Tiffany's revolutionary contributions to modern decorative lighting. Organized by the Neustadt Collection of Tiffany Glass in New York City, this exhibition presents the first in-depth look at the Tiffany Studios' deliberate efforts to produce lamps that balance artistry with utility and profitability. Over 40 stunning objects in an array of colors, sizes and decorative styles are featured in five sections exploring the themes of fabrication, design inspiration, and changing lighting technologies. The show also includes tools, materials and period photographs to enhance the viewer's appreciation of the objects by demonstrating how they were made and what influenced the designs.

Tiffany's lamps are an innovative and successful combination of usefulness and beauty. As articles of utility, reading lamps, floor lamps, and hanging shades come in a wide variety of sizes and shapes to regulate and direct light. As objects of art, the lamps, with their interplay of colored glass and richly sculpted bronze, bring beauty into the home. Whether understated minimal accents of color, or showy, elaborate design statements, Tiffany lamps compliment a diversity of decorative schemes. This exhibition goes beyond the general appreciation of the beauty of Tiffany lamps by examining the artistry and

social context of these iconic objects. By creating lamps as objects of both utility and art, Louis Comfort Tiffany realized his goal of making beautiful objects accessible to the public.

> For related event, see page 14.

Louis Comfort Tiffany
American, 1848–1933
Wisteria Library Lamp
leaded glass and bronze, 1900–1906
27 x 18 inches
Organized by The Neustadt Collection
of Tiffany Glass, New York



Japanese Woodblock Prints

5.15.10 – 7.25.10

Ford Graphics Gallery



Japanese woodblock prints influenced the paintings and prints of the French Impressionists. These delicate images reflect the pleasure-seeking culture of Japan; depicting beautiful women, Kabuki actors, and landscapes peopled with characters from everyday life. Since the mid to late 19th century, printmakers have looked to Japanese prints for their unique use of composition, color, and perspective.

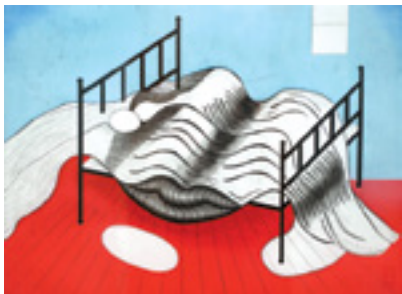
Among the earliest gifts to the FIA's collection, the Japanese prints are rarely on view because of the damage that can occur when the delicate colors are exposed to light. This exhibition will illustrate the important and influential genre of the most skilled woodblock printers. Included will be works by masters such as Hiroshige, Kunisada and Kuniyoshi.

Ando Hiroshige
Japanese, 1797–1858
Sudden Shower Over Shin-Ohashi Bridge
woodblock on paper, 1857
13 3/8 x 9 7/8 inches
Gift of Philip K. and Anne U. Stevens, 1998.19

Recent Acquisitions to the FIA's Permanent Collection

7.31.10 – 9.26.10

Ford Graphics Gallery



The FIA's permanent collection has over 3,000 works on paper and continues to grow through generous gifts and by purchasing works to fill gaps in the collection. Over the past three years, the FIA has acquired many works on paper from which this exhibition was created.

Louise Bourgeois
American, b. France, b. 1911
Metamorphosis
aquatint on paper, 1997
20 x 24 inches
Museum purchase, 2007.128

fleckenstein video gallery

MAY



Photo Courtesy of Rita Fecher Archives, Zev Greenfield, Benjy and Wanda Melendez Collection

Posse

(U.S., 2007) By Dzine, 14 min.
Benjy Melendez is a Puerto Rican youth who heads the Ghetto Brothers, a South Bronx street gang turned peace-minded community activist group. The contrast of Benjy's tough exterior and his private spiritual interior is the epicenter of the work by Dzine, a Chicago-based multimedia artist.

JUNE



In Between a Hard Place

(U.S., 2008) By Kate Gilmore, 9 min.
Creating the role of many female stereotypes, the artist interacts with a succession of sheetrock walls that she must punch and kick her way through with a set of incredibly high heels.

JULY



Bataille

(Belgium, 2003) By Nicolas Provost, 7 min.
Fragments from the classic Akira Kurosawa film *Rashomon* are subjected to a mirror effect. A scene in which two samurai fight each other becomes a cosmic field of monsters where horror and pain evoke beauty and joy.

AUGUST



Perfect Leader

(U.S., 1983) By Max Almy, 4 min.
A still-potent satire of the political television spot, this work shows that ideology is the product and power is the payoff. The process of political image-making and marketing is revealed as an omnipotent computer manufactures the perfect candidate.

featured acquisition

Dante Marioni is known for his mastery of Venetian glassblowing techniques. The forms used in his work are inspired by ancient classic Greek and Etruscan pottery that he transforms into modern sculpture. His elegant vessels are compelling for their bold colors, striking geometries, graceful forms, and impeccable finishes. Most of the forms he chooses are utilitarian in nature, yet by increasing the scale he challenges the viewer's perceptions of these objects.

Marioni has been inspired by both historical and contemporary glassblowers. Drawing upon the centuries old artistic conversation about classical design, proportion, and aesthetics, he is also influenced by the teachings of contemporary mentors, such as Lino Tagliapietra, to create a style distinctively his own. Marioni was introduced to the medium at a young age. He grew up working in glass studios, where he was surrounded by many well-respected artists such as Dale Chihuly, William Morris and Richard Marquis.

This work, *Orange and Yellow Vase Form* is from Marioni's *Whopper* series of large scale vase forms and is one of 19 works of contemporary decorative arts donated by Natalie Pelavin in 2009.

Dante Marioni
American, b. 1964
Orange and Yellow Vase Form
blown glass, 1991
29 x 9 1/2 inches
Gift of Natalie Pelavin, 2009.66

Dante Marioni



acquisitions

Ron Kleeman
American, b. 1937
A.J. Foyt Cartwheel Series
screenprint on paper, 1977
20 x 30 inches
Gift of Louis K. and Susan P.
Meisel, 2010.1

Ron Kleeman
American, b. 1937
A.J. Foyt And The Borg Warner Times Four
lithograph on paper, 1978
17 1/4 x 24 inches
Gift of Louis K. and Susan P.
Meisel, 2010.2

Ron Kleeman
American, b. 1937
Usher - Commemorative
lithograph on paper, 1978
16 x 20 inches
Gift of Louis K. and Susan P.
Meisel, 2010.3

Ron Kleeman
American, b. 1937
Sneva - Cartwheel Series
lithograph on paper, 1978
17 1/4 x 24 inches
Gift of Louis K. and Susan P.
Meisel, 2010.4

Ron Kleeman
American, b. 1937
Johncock - Cartwheel Series
lithograph on paper, 1978
17 1/4 x 24 inches
Gift of Louis K. and Susan P.
Meisel, 2010.5

Ron Kleeman
American, b. 1937
Rutherford - Cartwheel Series
lithograph on paper, 1978
17 1/4 x 24 inches
Gift of Louis K. and Susan P.
Meisel, 2010.6

Ron Kleeman
American, b. 1937
Mustang Sally The Third Cross
screenprint on masonite, 1978
47 1/2 x 69 1/4 inches
Gift of Louis K. and Susan P.
Meisel, 2010.7

Ron Kleeman
American, b. 1937
SoHo Saint
lithograph on paper, n.d.
35 1/2 x 38 1/2 inches
Gift of Louis K. and Susan P.
Meisel, 2010.8

Ron Kleeman
American, b. 1937
Fire Engine and Car
lithograph on paper, n.d.
17 x 25 inches
Gift of Louis K. and Susan P.
Meisel, 2010.9

Charles Bell
American, 1935 - 1995
Ultimate Gumball
screenprint on masonite, 1979
48 x 54 inches
Gift of Louis K. and Susan P.
Meisel, 2010.10



Tom Blackwell
American, b. 1938
Santa Monica Harley
screenprint on masonite, 1977
29 x 37 inches
Gift of Louis K. and Susan P.
Meisel, 2010.11

Tom Blackwell
American, b. 1938
Shatzi
screenprint on masonite, 1979
46 1/2 x 60 1/2 inches
Gift of Louis K. and Susan P.
Meisel, 2010.12

Tom Blackwell
American, b. 1938
Triumph Trumpet
screenprint on paper, 1981
28 3/4 x 28 3/4 inches
Gift of Louis K. and Susan P.
Meisel, 2010.13

Audrey Flack
American, b. 1938
Royal Flush
screenprint on masonite, 1977
48 x 66 inches
Gift of Louis K. and Susan P.
Meisel, 2010.14

Ralph Goings
American, b. 1938
Griddle Inn
screenprint on masonite, 1978
30 x 45 1/2 inches
Gift of Louis K. and Susan P.
Meisel, 2010.15

Oded Halahmy
Israeli, b. Iraq, b. 1938
Ancient Game (Belbelwahach)
bronze cast, 2006
35 1/4 x 21 3/4 inches
Gift of the artist, 2010.16

Paul Frets
American, b. 1935
Gandy Tree
oil on canvas, 1983
72 x 72 inches
Anonymous Donor, 2010.17

art on loan

The following artworks are on loan from the FIA to the exhibitions:

Dutch Utopia: American Artists in Holland 1880–1914

Taft Museum of Art
Cincinnati, Ohio
2/5/10 – 5/2/10

Grand Rapids Art Museum
Grand Rapids, Michigan
5/23/10 – 8/15/10

Letta Crapo Smith
American, 1862–1921
The First Birthday
oil on canvas, 1904
56 1/2 x 41 7/8 inches
Gift of Mrs. Jay C. Thompson, 1967.10



Degas: Figures in Motion

Art Gallery of Alberta
Edmonton, Alberta, Canada
1/22/10 – 5/30/10

Edgar Degas
French, 1834–1917
Danseuse à la barre
charcoal and pastel on paper, ca. 1885
9 x 11 1/2 inches
Gift of The Whiting Foundation in
memory of Alice D. Johnson, 1988.1



MAY

- SA 1 7:30p Film:** *The Imaginarium of Doctor Parnassus*
- SU 2 1:00p Artist Reception:** *Art Sales & Rental Gallery*
2:00p Film: *The Imaginarium of Doctor Parnassus*
- MO 3 7:30p Jewish Film Festival:** *No. 4 Street of Our Lady*
- TU 4 7:30p Jewish Film Festival:** *The Debt*
- WE 5 12:15p Art à la Carte:** *The Great Masters of the Italian Renaissance: Bernardo Strozzi*
7:30p Jewish Film Festival: *The Brothers Warner*
- TH 6 7:30p Jewish Film Festival:** *For My Father*
- FR 7 7:30p Film:** *The Girl With the Dragon Tattoo*
- SA 8 7:30p Film:** *The Girl With the Dragon Tattoo*
- SU 9 2:00p Film:** *The Girl With the Dragon Tattoo*
- WE 12 12:15p Art à la Carte:** *The Great Masters of the Italian Renaissance: Fra Angelico*
- FR 14 7:30p Film:** *The White Ribbon*
- SA 15 10:00a Exhibition Opens:** *Japanese Woodblock Prints*
7:30p Film: *The White Ribbon*
- SU 16 2:00p Film:** *The White Ribbon*
7:00p Arabic Series: *Comedy, Arabic-style*
- WE 19 12:15p Art à la Carte:** *The Great Masters of the Italian Renaissance: Caravaggio*
- FR 21 7:30p Film:** *Mary & Max*
- SA 22 7:00p Celebration:** *The Party*
- SU 23 1:00p Exhibitions Open:** *Lino Tagliapietra & Tiffany Lamps*
2:00p Film: *Mary & Max*
4:00p Lecture: *Lino Tagliapietra*
- WE 26 12:15p Art à la Carte:** *The Great Masters of the Italian Renaissance: Giotto*

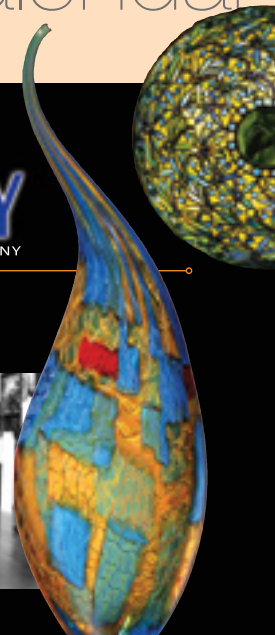
JUNE

- WE 2 12:15p Art à la Carte:** *The Great Masters of the Italian Renaissance: Van Dyck*
- FR 4 7:30p Arabic Film Series:** *Amreeka*
- SA 5 7:30p Arabic Film Series:** *Amreeka*
- SU 6 2:00p Arabic Film Series:** *Driving to Zigzagland*
- WE 9 12:15p Art à la Carte:** *Mona Lisa Revealed*
- SA 12 10:00a Flint Art Fair**
- SU 13 10:00a Flint Art Fair**
- WE 16 12:15p Art à la Carte:** *David Hockney's Secret Knowledge*
- WE 23 12:15p Art à la Carte:** *A Model for Matisse*
- WE 30 12:15p Art à la Carte:** *Rothko's Rooms*

AUGUST

- MO 16 12:00p Family Event:** *Art School Tent at the Genesee County Fair (see page 19 for complete schedule)*

calendar



6th Annual Karen Schneider Jewish Film Festival

Films focusing on Jewish life and culture, sponsored by the Flint Jewish Federation, Jewish Community Services, and the Flint Institute of Arts.



April 29

6:00p Patron Gala Reception in Isabel Hall

7:30p **A Matter of Size**

(Israel, 2009) 92 min.

This feel-good, "Full Monty"-style comedy is about Israeli guys who aim to become Sumo wrestlers.



May 3

7:30p **No. 4 Street of Our Lady**

(U.S., 2009) 95 min.

This documentary is about a Polish-Catholic woman who rescued 16 Jewish neighbors in World War II.



May 4

7:30p **The Debt**

(Israel, 2007) 100 min

In a psychological thriller, a former Israeli secret agent unexpectedly meets a long-buried demon from her past.



May 5

7:30p **The Brothers Warner**

(U.S., 2008) 94 min.

The siblings who founded and ran Warner Bros. Pictures for 50 years are subjects of a documentary.



May 6

7:30p **For My Father**

(Germany/Israel, 2008) 100 min.

The lives of a suicidal youth, a rebellious teen and an embittered older man intertwine over a weekend in Tel Aviv.



For ticket prices and more information, contact the Flint Jewish Federation at 810.767.5922

foma films



April 30 & May 1, 2

The Imaginarium of Doctor Parnassus

(U.K., 2009) Directed by Terry Gilliam, 123 min., rated PG-13

Heath Ledger's final film is a surrealistic tale of a side-show troupe that promises journeys to an imaginary world of realized dreams.



May 7, 8, 9

The Girl With the Dragon Tattoo

(Sweden, 2009) Directed by Niels Arden Oplev, 152 min., subtitled, not rated

This dark, twisty thriller is no typical Hollywood suspense film. A disgraced journalist and a ruthless computer hacker investigate a 40-year-old mystery involving a powerful family.

FOMA Films are supported by



May 14, 15, 16

The White Ribbon

(Germany, 2009) Directed by Michael Haneke, 144 min., subtitled, rated R

From the director of the art-house hit "Cache" comes a mystery about strange events occurring in a German village shortly before the outbreak of World War I. Nominated for the 2009 Best Foreign Language Film Academy Award.



May 21, 23

Mary & Max

(Australia, 2009) Directed by Adam Elliott, 92 min., not rated

Philip Seymour Hoffman, Toni Collette and Eric Bana provide the main voices in a "claymation"-animated tale of friendship between two unlikely pen pals that lasts for 20 years and spans two continents.

Screenings

Fri & Sat @ 7:30p

Sun @ 2:00p

except where indicated

Donations

\$5 members

\$6 non-members

\$4 FOMA members

2nd Annual Arabic Film Series

The American Arab Heritage Council and the Flint Institute of Arts present films concerning Arabic people, culture, and issues. Also part of the partnership is a stand-up comedy event.

May 16

7:00p **Comedy, Arabic-style**

Michigan-based stand-up comic **Amer Zahr** presents a live show in the FIA Theater. **Arwa Alsamarae** will present slam poetry.



June 4, 5

7:30p **Amreeka**

(U.S./Canada, 2009) 96 min.

An immigrant single mother and her teenage son cope with a difficult life in small-town Illinois.



June 6

2:00p **Driving to Zigzagland**

(U.S., 2006) 92 min.

This comedy chronicles a day in the life of a Palestinian cab driver in Los Angeles.



For ticket prices and more information, contact the American Arab Heritage Council at 810.235.2722

Summer Recess

With many people distracted by outdoor activities between Memorial Day and Labor Day, we're placing our two film series on summer hiatus.

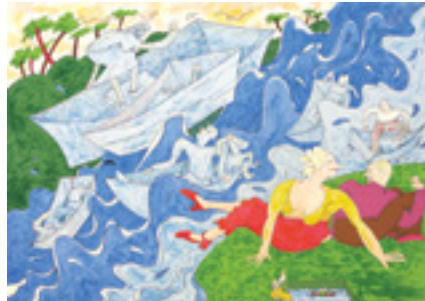
The FOMA Film Series continues to be a great success. The average attendance, up 20% from 2008-09, has been the best recorded in the 25-plus years of the series.

The College Town Movie Series has been growing an audience in its first season of Thursday night offerings. Partnered with the four local colleges, the FIA has been granting free admission for patrons with college ID or FIA College Town membership.

Look for announcements about fall films in the mail, through the local media and at www.flintarts.org later this summer.

fia print society 2009

The FIA is happy to announce that on May 20, 2010 at 5:30p, the print by Chicago artist Gladys Nilsson will be ready for pick up at the FIA's Isabel Hall. Also, Master printer David Jones from Anchor Graphics, who printed the edition, will give a presentation on the techniques used to create this edition.



The final proof for the 2009 FIA Print Society lithograph. Image size: 11 3/4 x 16 7/8 inches, Paper size: 18 x 23 inches.

Each year, the FIA Print Society commissions an artist to produce a print to augment both the FIA's collection and the pursuit of personal collecting. The Society is limited to 100 members in good standing at the Contributor level or above. FIA Print Society dues are \$250.00 annually, which provides each participating member with a selected print and related programs. There are still spaces available to become a member of the 2009 Print Society.

For more information about the FIA Print Society, contact Valarie Shook at 810.234.1695 or vshook@flintarts.org.

Yes, I want to be a member of the FIA Print Society 2009.

Membership Information

Circle: Dr. Mr. Mrs. Ms. Miss

Name _____

Address _____

City _____ State _____ Zip _____

Phone _____

Email _____

Method of Payment

Check payable to "FIA Print Society"

Visa MasterCard American Express

Account # _____ Exp. Date _____

Signature _____

I am currently an FIA member at the Contributor level or higher (see page 21 for levels).

I would like to upgrade my membership or join the FIA at the Contributor level or higher with an additional:
\$ _____

+ \$250.00 FIA Print Society dues

= \$ _____ **Total Payment**

Please return form and payment to:
Flint Institute of Arts
Print Society
1120 E. Kearsley St.
Flint, MI 48503

THE PARTY

TAGLIAPIETRA & TIFFANY

Saturday ~ May 22, 2010

7:00p-11:00p

*A one-of-a-kind celebration
with live entertainment
and a strolling dinner*

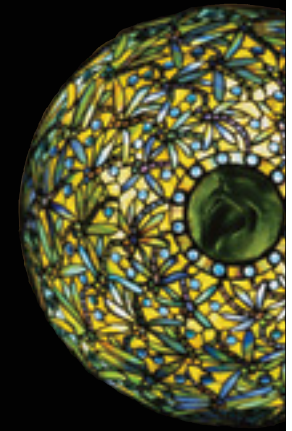
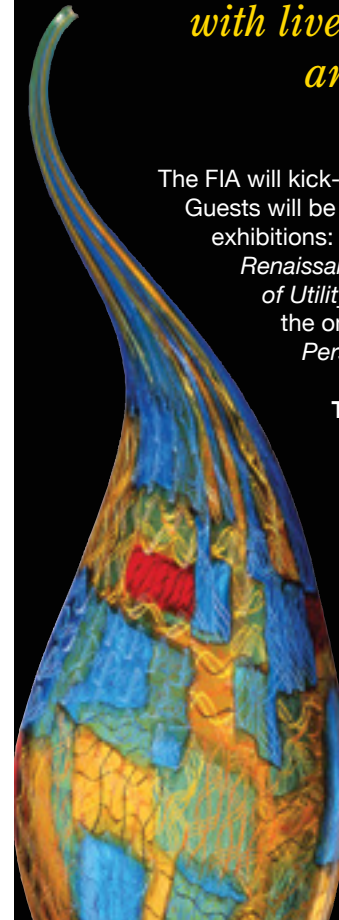
The FIA will kick-off its second summer of glass with **The Party**. Guests will be treated to an exclusive viewing of two new exhibitions: *Lino Tagliapietra in Retrospect: A Modern Renaissance in Italian Glass* and *Tiffany Lamps: Articles of Utility, Objects of Art*. **The Party** will also celebrate the one-year anniversary of the *Flint Institute of Arts Persian Chandelier* created by Dale Chihuly.

The Party will feature a strolling dinner, cocktails, live entertainment, two glass sculpture raffles and a once in a lifetime opportunity to meet Lino Tagliapietra, the maestro of glassblowing.

Funds raised support FIA exhibitions, installations and programs relating to glass.

For more information or to make a reservation, please call 810.234.1695 or visit flintarts.org.

Admission is \$100.00 per person. (50% tax deductible)





**“Chemicals & Colors – the Artist’s Studio”
Lecture by Lino Tagliapietra**

Sunday, May 23 · 4p
FIA Theater

To kick off the public opening of the exhibition *Lino Tagliapietra in Retrospect: A Modern Renaissance in Italian Glass*, the artist will give an illustrated presentation on a special behind the scenes view of his lab, studio, techniques and inspirations.



New FIA Website

With over 300 detailed pages, the FIA's redesigned website features the latest exhibitions, films, classes, special events, highlights from the FIA's collection, and more. The website also has several new features, including a calendar and comprehensive search bar. Check out the calendar weekly for programming updates.



43rd Annual Flint Art Fair

Saturday, June 12 · 10a–6p
Sunday, June 13 · 11a–5p

Shop, eat, and be entertained at one of the community's premier events attracting thousands of people each year. More than 150 artists will offer works ranging from sculpture, ceramics, and glass, to painting, photography, textiles, fine jewelry, and wood. Listen to local music by some of the area's best musicians, and stop by one of the many food vendors to enjoy a meal or a snack.

- \$5** Adults
- \$4** FIA members
- \$3** Ages 13–18, senior citizens, & Friends of Modern Art members
- Free** Children 12 & under

**FOMA Free Music Night
Saturday, June 12 · 6p–10p**

Join us in the beer tent for an evening of live music by popular local musicians. **Free admission**

3rd Annual Beer Tasting Event

Saturday, September 25, 2010

Save the date for an outdoor celebration on the FIA grounds featuring import and craft beers. Enjoy this Fall festivity with beer, food, and live music. Look for your invitation in August!



Take-A-Seat

When you visit the FIA Theater you will notice engraved brass plaques on the armrests with inscriptions. The person that created the designation has helped the FIA's Endowment Campaign and received a personal lasting memory.

Show your support and create your own wording for the seat of your choice. Treat your family, honor a marriage, friend, loved one, or commemorate a lifetime achievement; the message is up to you and we will help if it is a surprise!

It is easy because you can pay in annual installments and it is 100% tax deductible.



Let the FIA help you select your seat. Please contact Kathryn Sharbaugh at ksharbaugh@flintarts.org or 810.234.1695.

1 Seat Levels

Gray Seat - \$1,000

- A one time payment
- A pledge of \$500 per year for two years

Red Seat - \$1,500

- A one time payment
- A pledge of \$500 per year for three years

If you wish to sponsor multiple seats, submit a copy of this form for each plaque.

- Instead of sponsoring a seat, I would like to make a gift to the Endowment Fund of \$ _____

2 Brass Plaque Inscription

Please clearly print the text as you would like it to appear on your brass plaque. It can be your name, a family name, a business name or a tribute to another person (three lines maximum, one character per box, blank spaces count as one character).

3 Method of Payment

Name _____
 Address _____
 City _____ State _____ Zip _____

Check payable to “FIA Endowment Fund”

Visa MasterCard American Express

Account # _____
 Expiration Date _____
 Signature _____

Return form to: Flint Institute of Arts
Take A Seat for Endowment
1120 E. Kearsley St.
Flint, MI 48503-1915

For more information, contact Kathryn Sharbaugh at 810.234.1695 or ksharbaugh@flintarts.org.

Your contribution is tax deductible in accordance with current law.

art à la carte

Art à la Carte is a series of informative programs focusing on the arts. It is offered free of charge on Wednesdays at 12:15p. Visitors are encouraged to bring lunch or pick-up something from the FIA Café. Coffee, tea and cookies are provided. All films are shown in the FIA's Isabel Hall.

May 5

The Great Masters of the Italian Renaissance: Bernardo Strozzi

This Genoese painter, called “Il Cappuccino,” is known for his religious subjects. *43 min.*

May 12

The Great Masters of the Italian Renaissance: Fra Angelico

The Italian painter and Dominican monk is known for his frescoes in the Convent of San Marco in Florence. *43 min.*

May 19

The Great Masters of the Italian Renaissance: Caravaggio

Caravaggio declared early in his career that he rejected the Renaissance search for the ideal and that he would study no teacher except nature. *43 min.*

May 26

The Great Masters of the Italian Renaissance: Giotto

The Italian painter and architect is significant for his original vision of the natural world and his ability to portray it. *43 min.*

June 2

The Great Masters of the Italian Renaissance: Van Dyck

Although he was born and trained in Belgium, Van Dyck became the leading court painter in England where he was a dominant influence in portrait painting. He was also an important innovator in watercolor and etching. *43 min.*

June 9

Mona Lisa Revealed

Breakthrough high resolution photography reveals for the first time that Leonardo may actually have painted the Mona Lisa with eyebrows and lashes—just one of 25 fascinating secrets this documentary reveals. *50 min.*

June 16

David Hockney's Secret Knowledge

Hockney visits Florence, Bruges, and Ghent, examining dozens of paintings by such masters as Jan van Eyck, Vermeer, Holbein, Caravaggio, and Velazquez. In a specially designed Hollywood set he demonstrates his findings and replicates the lost techniques of the Old Masters. *73 min.*

Sponsored by the Merkley-Elderly Charitable Trust



June 23

A Model for Matisse

A rich portrait of the creation of Matisse's masterpiece: *The Chapel of the Rosary in Vence*. The film presents Matisse's never-before filmed hand-painted gouaches and fabrics. *67 min.*

June 30

Rothko's Rooms

This program chronicles Mark Rothko's life and the development of his work. His softly defined, rectangular clouds of color stacked symmetrically on top of one another were intended to evoke the most elemental emotions. *60 min.*

educator workshop



From Classroom to Artroom: New Ways with Drawing, Painting and Sculpture



June 28 & 29 • 10a–4:15p

How is a portrait like a biography? What types of sounds do colors make? What can sculpture tell us about balance and wind speed? These are some of the topics that will be explored in this two-day workshop. Frequent visits to the galleries will be combined with hands-on activities exploring some “new” tools and materials available for making art such as “Shaper Paper,” pearlescent watercolor, and paper pulp. Technology in the artroom will also be covered.

Monday, June 28

Drawing & Painting \$75

Tuesday, June 29

Sculpture \$75

Both Days \$120

To Register, contact the Education department at 810.237.7314 or flintartsed@mac.com

summer class highlights

The Art of Yoga

June 9 – July 28 • 8a–9a

Expand your creative energy by strengthening your body and centering your mind. Focusing on breathing and body alignment will deepen sleep, reduce pain, improve muscle tone and heighten energy. All ability levels welcome.

Lois Sharp-Schneider, *Instructor*

WED (8 weeks)

Full Session: \$60 Members, \$72 Non-Members

Single Sessions: \$10 Members, \$12 Non-Members



Drawing From the Collection

June 10 – July 29 • 9:30a–12:30p

Gain an intimate understanding of FIA masterworks as you sketch and draw from the collection. Learn the intricacies of composition, light and shadow, and distinctive mark making. Students will also make rich color studies with colored pencils.

Matthew Osmon, *Instructor*

THU (8 weeks)

\$114 Members, \$140 Non-Members



Super Sunprint Photographs

June 15 – July 6 • 12p–1:30p

Explore your interest in science and art! Create unique blue and white photos using the sun and water. Arrange fun objects on photosensitive paper and develop prints. No camera required!

Courtney Simpson, *Instructor*

TUE (4 weeks)

\$47 Members, \$57 Non-Members



summer camp

Campers will learn the fundamentals of drawing, painting, sculpting, theater, and more! Ages 5–8 and 9–12 will share space and enjoy time separately while engaging their minds and bodies in creativity and productive summer play.

Enroll separately for each week. Drop off times begin at 8:30a. Each Friday, friends and families will gather at 4:00p for a Bishop Gallery performance/exhibition reception.

\$150 Members

\$183 Non-Members



Pop Art Puppets

July 12–16 • 9a–4:30p

Make funky food art with Pop Art printmaking techniques. Practice acting techniques and create skits with personalized hand puppets and your own Mr. Potato Head Pop Art clay characters.



Fantasy Camp

July 19–23 • 9a–4:30p

Start with a clay project, then explore the fantastic worlds of heraldry, knights, fairies, unicorns and mixed media dragons. Read folklore tails and draw and paint your family coat of arms.

Island Adventure

July 26–30 • 9a–4:30p

Make brightly painted tropical birds and flowers from the Caribbean, Japan, and Australia. Look at Aboriginal art and create authentic patterns and textures! Create musical instruments for the Friday Bishop Gallery luau!

> For more information and registration, please call 810.237.7315

family event

Genesee County Fair



August 16–22

Mon–Thu & Sun • 12p–5p

Fri & Sat • 12p–7p

Come make a variety of funky watercolor flowers with the FIA Art School staff using bright summer colors to create Mexican tissue paper flowers. Also, make a paper flower bouquet and a string flower garland to wear.



Membership contributions are a significant part of the Flint Institute of Arts operating income.

* An asterisk indicates the names of those who have upgraded their memberships with a larger contribution.

+ A plus indicates the names of Friends of Modern Art (FOMA) members.

Levels

Youth (ages 2.5–12)	\$20
Student (ages 13+)	\$20
Individual	\$30–\$39
Family	\$40–\$49
Contributor	\$50–\$99
Sustainer	\$100–\$249
Sponsor	\$250–\$499
Donor	\$500–\$999
Silver Patron	\$1,000–\$2,499
Gold Patron	\$2,500–\$4,999
Benefactor	\$5,000 or more

Rubens Society Corporate Members

Silver Patron
(\$1000–\$1,499 annually)
Serra Automotive

Corporate Members

Corporate Sustainer
(\$100–\$249 annually)
Flint Area Advertisers Federation

Individual Members

Sustainer
(\$100–\$249 annually)
Ms. Barbara E. Bouknight+
Ms. Valerie Clarke
Mr. & Mrs. Glenn Lysinger
Ms. Maria Tibaudo-Josko

Contributor
(\$50–\$99 annually)
Ms. Jennifer M. Acree+
Mr. & Mrs. Floyd Clack
Mr. & Mrs. Ralph Gorton+
Mrs. Karen Imarisio
Ms. Doris Malfese+

Family
(\$40–\$49 annually)
Mrs. Amie Akers+
Mr. Brett Albert
Ms. Jasmin Allen
Ms. Ann Marie Allward
Ms. Betsy Anderholdt
Mr. & Mrs. Wayne Arini
Mr. Greg Baehr
Ms. Barb Bakker
Ms. Kim Barber
Ms. Barbara L. Bassett
Ms. Rebecca M. Bates
Mr. Timothy S. Beers
Dr. & Mrs. Tom/Linda Belford
Mr. & Mrs. Frederick R. Birkhill Jr.
Ms. Kimberly Blair
Ms. Linda Blake
Ms. Joyce Blazen
Mrs. Kris Boike & Family
Ms. Hildegard Bonesteel
Mr. Steve Branch
Mr. & Mrs. Robert Brown+
Mr. Ricky Brown
Ms. Orene Bryant
Ms. Precious Buckner

Mr. Kevin Burdick
Ms. Cheryl Caleca
Ms. Xantheia Carter
Mr. Wade Carver & Ms. Heather Meier+
Ms. Melissa Casacchia
Ms. Kate Clements & Family
Ms. Carolyn A. Clemons
Mr. & Mrs. David Coburn+
Ms. Sabrina Collins
Ms. Laura Cortner
Mr. Jim Daniels
Mr. Schuyler Davis
Ms. Kathy Dean & Mr. Giorgi Dean
Mr. & Mrs. Bill Dobson
Ms. Glenda Dunlap
Mr. Alan S. Ells
Ms. Kathleen Etherly
Ms. Beverly Flowers-Coleman
Mr. & Mrs. Jethro Flynn
Mr. Joshua Flynn & Family
Mr. & Mrs. Napoleon Flynn-Harrington
Mr. Stuart Forsyth
Mr. Ronald Gesquiere
Ms. Lisa Goyette
Mr. & Mrs. Stephen Graham
Mr. & Mrs. Victor Green
Mr. & Mrs. Kamal Gupta
Ms. Lisa Hairston
Ms. Laura Hall
Ms. Lucy Ham
Mr. & Mrs. John Hebert
Ms. Mary Henderson
Ms. Mary Henderson & Family
Mr. & Mrs. Roger Hunyady+
Ms. Jennifer Ireland & Family
Mr. & Mrs. Brian Johns
Ms. Dawn Johnson
Ms. Sandra Johnson
Dr. Zeltou G. Johnson
Ms. Kristina Johnston
Ms. Margaret Jones
Ms. Stephanie Jones
Ms. Tonya Keener
Mr. Dean Keipert
Mr. Tim Kennedy
Ms. Eileen Kerr
Mr. & Mrs. Russell Kirskey
Ms. Dawn Kreh
Ms. Sherry A. LaFave
Ms. Cathy Lancaster
Mr. & Mrs. Robert Landaal
Mr. Steve M. Landaal
Ms. Lisha Lanehart
Mr. & Mrs. Gary Latimore
Ms. Gloria Lewis
Mr. Terry Lewis
Ms. Patricia Lockwood
Dr. & Mrs. James Lum+
Ms. Crystal Marshall
Ms. LB McCune

Mr. Scott McDaniel
Ms. Sharonda McGee
Ms. Vivian Miller
Ms. Doris Miree
Ms. Gwenda Motley
Mrs. Laura Mulligan
Ms. Marion Mumford
Ms. Lisa Murphy
Ms. Esther Music
Mrs. Nancy Myers & Family
Ms. Missie Nordrum
Mr. Babatunde Olaniran
Mr. Karlous O’Neal
Dr. Neal Persky
Ms. Sue Phipps
Ms. Marianne Pilibosian
Mr. & Mrs. Brock Place
Ms. Carol Pontbriand
Ms. Eraina Poole
Mr. & Mrs. Robert Pounds
Mr. Doron Pratt
Mr. & Mrs. Walter Russ
Mr. & Mrs. David Sabino
Ms. Tamara Sampson
Ms. Mary Scott
Nayyirah Shariff
Ms. Mandy Skinner
Ms. Rebecca Skinner
Mrs. April Smith
Mr. Scott Sobol
Ms. Debra Sopo
Ms. April Sprague
Ms. Sherri Stephens
Mrs. & Mrs. Edward Stinson
Mr. Mark Stultz+
Mr. Dwight Tavada
Ms. Dana Taylor
Ms. Maxine D. Taylor-Basemore
Ms. Natasha Thomas
Ms. Denise Toby
Ms. Kaneesa Tooson
Mr. & Mrs. Robert Vale
Mr. Douglas B. Vance
Mrs. Kimberly Ward
Rev. W.E. Whitaker & Ms. Carolyn Sims
Mr. Aaron Whitson
Ms. Futha Williams
Ms. Kathie Wind
Mr. Todd Womack
Mr. & Mrs. William Wykes
Ms. Terra Harris Young

Individual
(\$30–\$39 annually)
Ms. Jan Marie Arbor+
Mrs. Lydia Campbell
Miss Vera L. Crandall
Ms. Crystal Demps+
Ms. Adele Ernberger
Ms. Carol Fray
Ms. Melanie Fredericks
Ms. Kathy L. Hill

Ms. Mary Rose Karl
Ms. Nancy Kramer
Ms. Lily Lafollette
Mr. Steven Lasota
Ms. Sandra Law
Ms. Julia Leach
Mrs. Janet A. Lutton
Miss Mary Margaret
Ms. Janice Martin
Mrs. Wendy McWhorter
Ms. Winter D. S. Murray
Ms. Michelle Nassar
Ms. Penny Patterson
Mr. Kevin Paulina
Ms. Paulette Reeves
Mr. Danny Reynolds
Ms. Stephanie Schneiderman
Ms. Barbara Seleno
Mrs. Kimberly Spencer
Mr. Aaron Stanger
Ms. Linda Steibel
Ms. Christine Thomas
Ms. Shannon Tischbein
Ms. Monique Wilhelm
Ms. Christina Withrow
Ms. Nancy Worthing
Ms. Jodie Wright+

Student
(\$20 annually)
Ms. Kristi Benavides
Ms. Lindsay Birnie
Miss Miranda Bissinger
Ms. Carly Delaney
Miss Kacie Forbes
Miss Brittany Holben
Miss Emily Kovacs
Mr. Kyle Laduke
Ms. Jen Macom
Ms. Rachel Miller
Miss Emily Pinter
Miss Halley Reek
Ms. Erica Royer
Miss Sarah Slama
Miss Chloe Stewart
Mr. Benny Stribling

Youth
(\$20 annually)
Sullivan Cox
Nicholas Gadola
Laurny Henry
Skyelar Herriman
Kate Preiss
Karl Rueterbusch
Miss Savanna Shaw
Katherine Sikorski

Dues received
1.8.10 – 3.8.10

Rubens Society

CORPORATE

Corporate Sponsor

(\$1,000–\$1,499 annually)

Applegate Chevrolet Co.
Sorensen Gross Construction
Company

INDIVIDUAL

Silver Patron

(\$1,000–\$2,499 annually)

Mrs. Edmund Brownell*+
Hank & Bonnie Graff
Mr. & Mrs. Raymond J. Kelly III
Mrs. Robert C. Morgan
Edward & Elizabeth Neithercut
Mr. & Mrs. Philip Shaltz*
Mr. & Mrs. James Spangler
Mrs. Helene J. Streich+
Dr. & Mrs. Steven Taft
Mr. & Mrs. James Truesdell, Jr.
Mrs. Marjorie B. Wentworth
Mr. & Mrs. William S. White+

Corporate Members

Corporate Supporter

(\$250–\$499 annually)

Luis A. Perez, DDS, MS, PC

Corporate Sustainer

(\$100–\$249 annually)

James K. Cantwil, DDS
The Torch Bar & Grill

Individual Members

Donor

(\$500–\$999 annually)

Mr. & Mrs. Kelly B. Beardslee+
Dr. & Mrs. Stephen R. Burton+
Rev. Reginald V. Lancaster &
Dr. Karen R. Wilkinson

Sponsor

(\$250–\$499 annually)

Mr. Richard M. Barron+
Mr. & Mrs. Joseph Burroughs
Mr. Greg Edquist*+
Mr. Michael Farrell &
Mr. Marc Herrick
Ms. Ingrid Halling*+
Mr. & Mrs. James N. Johnson
Mr. & Mrs. Carl A. Pohly+
Gary & Barb Reetz
Mrs. Miriam S. Schaffer ACSW

Mr. & Mrs. John Walter+
Ms. Carolyn Warren*

Sustainer

(\$100–\$249 annually)

Mr. & Mrs. Peter Anastor+
Mr. & Mrs. William R. Angus+
Mr. & Mrs. LeRoy Bence+
Ronald & Lucille Bigelow+
Ms. Ellen Brothers*
Sam & Bonnie Chambers*+
Mr. & Mrs. James Cherry*+
Ms. Betty J. Clark+
Mr. Richard F. Cordell
Mrs. Nancy M. Cronin
Mr. & Mrs. Dayne L. Davis
Mr. James A. Davis &
Ms. Carol M. Fabrizio
Mrs. Rosemary R. DeCamp
Mr. John C. Dickinson*
Mr. Dallas C. Dort
Mrs. Loretta C. Ellwood
Mr. & Mrs. Jack W. Ennest
Mr. Shawn Fraim &
Ms. Jessie Wood*+
Mr. John R. Gazall
Mr. & Mrs. John Giacchina+
Jeanne & Ralph Graham
Mr. & Mrs. Richard A. Griswold*
Dr. Peter Gryson &
Mrs. Evelyn MacKenzie Gryson
Mrs. Diana Harsch+
Mr. & Mrs. Francis Hudson+
Ms. Judith I. Ingram
Mr. & Mrs. James Lay*
Mr. Paul A. Lazar &
Ms. Susan P. Kirby+
Ms. Kay Ella Lennerth
Mr. John G. LeSage+
Mr. & Mrs. Carl A. Leser+
Mr. & Mrs. John Mair III
Mr. John Marshall &
Dr. Mary Marshall
Ms. Olivia P. Maynard &
Mr. S. Olof Karlstrom
Mr. & Mrs. Anthony Mitchell
Mr. & Mrs. Alexander C. Murray+
Mr. & Mrs. John Nieman
Mr. & Mrs. Frank Ninteman
Mr. & Mrs. David M. Pettengill+
Betty & Richard Ramsdell
Ms. Ashley V. Randall
Dr. Jacquelyn Reinertson
Jane & James Richardson+
Kenneth & Phyllis Schilling
Mr. & Mrs. William A. Shaheen,
Jr.*+
Dr. & Mrs. T. Trevor Singh
Ms. Sandra K. Smith+
Mr. & Mrs. Hugh Stelter*+
Mrs. Shirley A. Stevens+
Mr. & Mrs. Henry C. Thoma, Jr.

Mr. & Mrs. Philip E. Timyan
Dr. & Mrs. James Williams
Mr. & Mrs. David Wilson*+

Contributor

(\$50–\$99 annually)

Ms. Lynn K. Allen &
Mr. Robert Cox+
Mr. & Mrs. Charles M. Appel
Dr. & Mrs. Wilbur J. Boike
Mr. & Mrs. Joseph V. Bonadies
Mrs. Patricia Boyd
Mr. & Mrs. Nick A. Calandro, Jr.
Robert & Phyllis Carter
Mr. & Mrs. James Cheek
Senator Deborah Cherry*+
Mr. & Mrs. Donald C. Dillon*
Ms. Elizabeth DuMouchelle &
Mr. Leonard F. Charia*
Mr. & Mrs. George Emery*
Mr. & Mrs. Gordon Enderle*
Mrs. Vera Farah
Miss Annette Fechik*
Mr. Gregory D. Fiedler
Ms. Andrea Zlatec Floden
Ms. Lee Giacalone+
Mr. & Mrs. Walter Griffin+
Mr. & Mrs. Gerald House
Ms. Ann Howard
Dr. & Mrs. Larry Kage
Ms. Kathryn Kohout
Ray & Marie Kudej
Ms. Susanne J. Les &
Mr. Tim Green
Tiffany & Bob Lovett
Mr. & Mrs. Anthony J. Mansour
Ms. Marlene Marlowe*
Ms. Lucille M. Martel
Mr. & Mrs. Charles R. McKone
Ms. Gail R. Odom
Dr. & Mrs. Walter Z. Rundles, Jr.
Mr. Scott Siefker
Mr. & Mrs. James E. Streby
Mr. Ken Swisher
Mrs. Laurie A. Tata*
Ms. Angela Wesch*
Mr. & Mrs. Mike Wilson*+
Ms. Trish M. Zito-Smith

Family

(\$40–\$49 annually)

Mr. & Mrs. Ricardo Alfaro
Mr. Tom Amie &
Ms. Pennie A. Meyers+
Mrs. Kandice Andrews*+
Mr. & Mrs. Gary Babcock
Mr. & Mrs. David G. Babieracki+
Mr. & Mrs. Chris Balog+
Mr. & Mrs. Kirk Barkel
Mr. & Mrs. Don Beardslee
Mr. & Mrs. David Beaulieu+
Mr. & Mrs. Earl Bell

Mr. & Mrs. James Boles
Ms. Gwendolyn Bronson
Ms. Inez M. Brown
Mr. & Ms. Robert Brown
Mrs. Karen L. Burdick
Ms. Connie Burgess
Mrs. Debbie Buterakos
Mr. & Mrs. Tom Cheek
Ms. Abigail I. Chou & Family
Ms. Courtney Cook
Mr. & Mrs. Charles Dudley
Ms. Julie Ebert
Mr. & Mrs. Wilbert Elbert+
Mr. & Mrs. Arthur Erickson
Ms. Rita Fagan
Ms. Jennifer Farrington
Ms. A. Joan Fischer*+
Ms. Nora G. Fisher+
Ms. Crystal Flynn
Mr. Richard W. Fortner+
Mr. & Mrs. John Frederick
Ms. Joyce M. Gadola
Mr. & Mrs. Jack Gallery
Mr. & Mrs. Robert Gremel
Mr. & Mrs. Charles Handley
Mark & Rebecca Hanner
Mr. & Mrs. Donald E. Harbin
Mr. & Mrs. Carl S. Hawkins
Ms. Mary Jo Herbig
Ms. Donna Hines*
Mr. & Mrs. Robert Hockin
Ms. Ernestine Holmes
Ms. Kathi Horton
Ms. Thressa N. Horton
Mr. & Mrs. James Hotary+
Mrs. Sara Howes & Family
Mrs. Mary Ittigson
Mrs. Elaine Johnson
Ms. Cathy E. Johnson
Ms. Lolanda R. Johnson
Mr. & Mrs. Myrton N. Jones
Mr. & Mrs. Jerome P. Karle+
Vincent & Mechelle Kuchar
Mrs. Lisa M. Lamb
Mrs. Jane Landaal
Mr. & Mrs. Stephen S. Landaal
Mr. & Mrs. Shannon Langley
Ms. Lynn Larkin
Mr. & Mrs. Lee LaVictoire
Mr. & Mrs. Stevie Lester
Ms. Gail Lutton
Dr. & Mrs. Richard S. Mach+
Mr. & Mrs. Brian Martin
Mr. Patrick McDougall
Mr. Raymond A. McKee &
Ms. Shirley Eason
Mr. & Mrs. Peter McKenna
Mr. Richard McNally+
Mr. & Mrs. Lawrence M.
McQuigg+
Mr. & Mrs. Thomas Minshall
Ms. Sandra L. Murphy

Mr. David Nassar &
Ms. Kara Freeman
Mr. Patrick Naswell &
Ms. Kerece Domerese
Ms. Kelly Nigrine & Family*
Atty. Matthew L. Norwood
Rev. & Mrs. John G. Park
Ms. Arlene Pena
Mrs. Julie Pflanzner*
Mr. Wayne Pickvet &
Mr. Bruce A. Barrett
Ms. Patricia Rockafellow*
Mr. & Mrs. Jim Rudel
Mrs. Geraldine C. Ryle
Ms. Sharon Sawyer
Dr. & Mrs. Gerald Schneberger
Dr. & Mrs. Byron Schoolfield
Ms. Virginia Soddy
Mr. & Mrs. Lawrence Stewart+
Mr. Rob Rosario &
Ms. Amy Surles-Rosario+
Mr. James Kelly &
Mrs. Mary Kay Thompson-Kelly
Ms. Beverly Tippett
Mr. & Mrs. Bruce Trevithick+
Mr. Kerry Verran
Mr. & Mrs. Patrick Wardell
Mr. Theron Wiggins
Ms. Karmen Williams
The Williams Firm, P.C.
Mr. & Mrs. Richard Yager
Mr. & Mrs. Jeffrey Yambrick

Individual

(\$30–\$39 annually)

Ms. Patricia Alexander+
Mrs. Mary Beth Atkinson
Mr. Fred Bellairs
Mrs. Connie Borrie
Mr. Andrew Borromey
Mrs. Doris Bravender
Mrs. Carole A. Brender+
Ms. Linda Brosz
Ms. Sally Case
Mr. Mark Chisnell
Mrs. Pamela Cislo
Ms. Carol L. Cook
Mrs. Irma Crickmore
Mr. Jason Dake
Mrs. Josephine A. Daly
Mrs. Anne L. Davis
Mr. Jimmy Davis
Mrs. Jean M. Deegan
Mr. William Dwyer
Mrs. Christine Ecklesderfer
Ms. Nancy Epstein+
Ms. Stacy Fintor
Mrs. Jami Fisher
Mrs. Alicia Geromel
Mrs. Elaine M. Graves
Mrs. Marilyn Hurwitz
Mrs. Debra Kalush

Ms. Jane Kelly
Ms. Dorothy Latchana
Ms. Marie Lauer
Mrs. Ann Lauwers
Ms. Cheryl Martin
Ms. Shawn L. Massey
Ms. Marcia K. Mathews+
Mrs. Beatrice A. Messmore
Miss Barbara Mirsky
Ms. Diane Murphy
Ms. Carol F. Negendank
Ms. Sharon A. Petersen
Ms. Mary Powell+
Ms. Edith J. Qualman
Ms. Sharonette M. Raysin
Mr. Robert Revis+
Mrs. Patti L. Rowe
Ms. Bernice Scott
Ms. Bertha Stephens
Mrs. Sally Stevens+
Mrs. Carol J. Strong
Mrs. Glenda Swirtz
Mrs. Irene Szuch
Mrs. Diane C. Tasselmyer
Mr. Thomas A. Taylor
Mr. Robert R. Thomas+
Ms. Margot VanHorn
Mrs. Barbara Walworth
Ms. Wanda R. Warby+
Ms. Jean Willing
Ms. Lois Wright
Mrs. Margie Murray Wright
Ms. Darla S. Wynn+
Mrs. Barbara A. Young
Mr. Robert J. Young
JoEtta Pyles Zalewski

Student

(\$20 annually)

Mr. Josh Brown
Mr. Ryan M. Eashoo+

Youth

(\$20 annually)

Miss Isabella Shansky-
Genovese*

College Town

(as of 3/8/10)

Baker College, 108 members
Kettering University, 70 members
Mott Community College,
618 members
University of Michigan-Flint,
222 members

Dues received

1.8.10 – 3.8.10

The Flint Institute of Arts gratefully acknowledges the generosity of the following donors who have supported the Institute with contributions.

Capital Campaign

INDIVIDUAL

Silver Patrons
(\$5,000–\$9,999)
Bill Carr Signs, Inc.
Ms. Kimberly Cross

Annual Appeals

Mrs. Linda Harwood
Ms. Beth E. Howarth
Ms. Phyllis Sykes

In Honor

In honor of FIA Visitor Services Representative, Louise Parham
Mr. & Mrs. Frederick R. Birkhill Jr.

In honor of Mrs. Bev Martin
Mr. Doug Bopp

Memorials

In memory of Virginia Dean Arthur
Mrs. James Hastings

In memory of Philip J. Braun
Dr. & Mrs. John Woollam
Mrs. Nancy Kleinpell

In memory of Martha Brewer
Mr. & Mrs. Robert J. VanDuyne

In memory of Virginia DeCamp to benefit the FIA's Scholarship Fund
Mrs. Frances G. Gumpfer

In memory of Fred Ferguson
Chuck & Kathryn Sharbaugh

In memory of Vivian Sosna Gottlieb
Ms. Maribeth M. Reigle

In memory of Margaret (Peggy) Shedd
Mr. & Mrs. Henry M. Hanflik

In memory of Frances Hynes
Mr. & Mrs. Gary J. Hurand

In memory of Thomas Moore Sumner & Mary Anne Sumner (to benefit the Endowment Fund)
Mr. Michael Dingman &
Mrs. Susan Sumner Dingman

In memory of Peter Kleinpell
Edward & Elizabeth Neithercut

In memory of Catherine Schwartz
Chuck & Kathryn Sharbaugh

In memory of Ernest Hamady
Mrs. Rosemary R. DeCamp
Vera Farah & Family
Mr. & Mrs. John B. Henry III
Mr. & Mrs. Christopher S. Kelly, Sr.
Mrs. Nancy Kleinpell
Chuck & Kathryn Sharbaugh
Mr. Arthur E. Summerfield
Mr. & Mrs. William S. White

In memory of Sonja I. "Sue" Hamady
Vera Farah & Family
Mr. & Mrs. John B. Henry III
Mr. & Mrs. Christopher S. Kelly, Sr.
Mr. & Mrs. William S. White

In memory of Judy Piper to benefit the Membership Endowment Fund
Clyde & Georgie Allard
Phil, Margaret, Lauren & Angela Barbour
Mr. & Mrs. Michael J. Bourke
Mrs. Clinton & Sharon Dowd
Falding B. Gadola
Ms. Caren Gordon
Mr. & Mrs. Michael M Hagan
Mr. & Mrs. John B. Henry III
Carol Jones
Junior Needlework Guild
Mr. & Mrs. Christopher S. Kelly, Sr.
Mr. & Mrs. Michael Melet
New Profit, Inc.
Harry & Wanda Piper
Barbara K. Read
Mr. & Mrs. Khalil Saab
Chuck & Kathryn Sharbaugh
Betsy & Patrick Stine
Barbara & Charles White
Mr. & Mrs. William S. White
Roy, Mary, Ian, & Madeline Zook

Special Gifts

Purchased a gift of an FIA Membership
Ms. Sally Case for Jimmy Davis
Mr. Aron McCormick for Crystal Demps
Mr. & Mrs. Kenneth Milito for Nancy Worthing
Kurt & Marjorie Soper for Winter D. Sue Murray
Mr. & Mrs. William S. White for Bob & Tiffany Lovett



Jonathan Hohn, Vice President of Citizens Bank Wealth Management presents checks from the Martha Merkley-Youth Charitable Trust to Kathryn Sharbaugh and John Henry. The Merkley Trust for Youth has awarded grant funds for two continuing programs, the Art School's Pre-College Portfolio Development Program and the Education Department's ARTreach Program.

General Operating Donations
Ms. Frances Jenkins
Ms. Debra Rubey
Mrs. Robert Smith
Mr. & Mrs. Richard C. Weiermiller

Additional Sponsors of Gee's Bend Quilts & Beyond: A Community Gala
Baker College
Bishop International Airport
Comcast
Mr. Loyst Fletcher, Jr.
Elder Oren & Missionary Phyllis Flynn & the Flynn Family
Genesys Health Systems
Goldmans - John & Marilyn Kopp
HealthPlus of Michigan
Mr. & Mrs. Gary J. Hurand
Dr. Zelton G. Johnson
Mott Community College
Mr. Marcus Randolph
The Pierians, Inc.-Greater Flint Chapter
The Rutherford Group
The University of Michigan
The Williams Firm, P.C.
United Way of Genesee County
University of Michigan-Flint
Valley Dental Office
Weaver Family Dentistry
Young Chevrolet Cadillac

To benefit the Education Department
Mr. & Mrs. Paul A. Fernandez (Lapeer West High School)
Ms. Emily Varney

Additional Sponsors of Landscapes from the Age of Impressionism exhibition
Charles Stewart Mott Foundation
Katherine B. Doherty
Founders Society
The Whiting Foundation

Donation to the Film Society
Mr. John G. LeSage

Additional Donor to the Light Painting Purchase Fund
Mr. & Mrs. Laurence E. MacDonald

Sponsor of Target Free Saturdays
Target

Sponsoring of 11th Annual Wine Tasting Event: Two Worlds of Wine
Fifth Third Bank
HealthPlus of Michigan
Holiday Inn Express, Flint Campus

Lewis & Knopf, CPAs, P.C.
Lynne A. Taft & Paradyme Art Studio
Medical Professionals, Inc.
Sharp Funeral Homes
The Flint Journal
View Newspapers

To benefit the Art School's Pre-College Portfolio Development program and the Education Department's ARTreach Program
Martha Merkley-Youth Charitable Trust

Sponsor of Tiffany Lamps: Articles of Utility, Objects of Art exhibition
Citizens Bank

Sponsors of The Party 2010
Associated Radiologists of Flint, P.C.
Rowe Incorporated
Mr. & Mrs. Khalil M. Saab
Chuck & Kathryn Sharbaugh
Stephens Wealth Management Group

In-Kind Sponsor of The Party 2010
Spartan Printing

Endowment Gifts

Individual Gifts
Mr. Michael Dingman & Mrs. Susan Sumner Dingman
Mrs. Robert C. Morgan

Additional Print Society 2009–2010

Mr. & Mrs. F. James Cummins
Mr. Greg Edquist
Mr. & Mrs. Walter Griffin
Samuel & Graciela Harris
Mr. Louis A. Hawkins
Mr. & Mrs. John Kopp
Tiffany & Bob Lovett
Mr. & Mrs. Mark Piper
Piper Realty Company
Mr. & Mrs. Timothy C. Sanford
The Torch Bar & Grill
Dr. & Mrs. Jay A. Werschky
Mr. & Mrs. Ridgway H. White
Mr. & Mrs. William S. White

Purchased a gift of a Print Society Membership
Mr. & Mrs. William S. White for Tiffany & Bob Lovett and Mr. & Mrs. Ridgway H. White

Gifts received
1.8.10 – 3.8.10

thank you

art sales & rental gallery

May/June Featured Artist

Artist Reception

Sunday May 7, 2010 1p-3p

Artisans of Wood

The Art Sales and Rental Gallery's two-month exhibition of turned-wood objects showcases work created by top wood artisans from Southeastern Michigan. Dating back to the ancient Egyptians, the turned-wood forms embody a provocative combination of the natural and the man-made. The pieces on display range from extreme simplicity to spontaneous sequences of pattern, shapes and texture. They exhibit the feeling of a special blend of the organic and the industrial as interpreted within contemporary society.



Bob Daily
Burlesque Series
redwood burl



Jeff Salter
Transformation
ash and maple burl



What is Art Sales & Rental?

The Art Sales & Rental Gallery is operated by the Founders Society to allow FIA visitors to view, purchase or rent artwork by local artists. It has served art lovers and artists for almost 50 years. The exhibited artwork is juried for acceptance by the FIA curator and Gallery volunteers. The artists set their own prices, and receive 70% of any sales or rental receipts. The Gallery receives the remaining 30%, with all profits going to the Founders Society to support the FIA. Our inventory of artwork is continually changing as current artists bring in new pieces, and new artists are added. Besides paintings and photographs, we also exhibit ceramic, glass, wood art, original stationery, and a host of other small works.

With the summer months and the Flint Art Fair approaching, the Gallery will feature a new assortment of small items that make great gifts. Stop by, you'll find the Gallery to be a pleasant place for a cool and relaxing break during the Flint Art Fair.

Also, popular t-shirts by former Flint artist Stacy Reed will be available with a new design.

Hours
Tue-Fri: 10a-5p
Sat: 11a-3p
Sun: 1p-5p
or by appointment

For information
810.237.7321

founders travel

Chicago - Talbott Hotel

May 26-27, 2010

\$413 pp (2 nights)

- Small luxury hotel in the heart of Chicago's effervescent Gold Coast accessible to restaurants, museums, and shopping
- Architectural Boat Trip
- Bucktown/Wicker Park Food Tasting and Cultural Tour (additional \$26)



Beijing China

NOV 1-9, 2010

9 days (15 Meals)



Highlights: Beijing Zoo, Peking Opera, The Great Wall, Rickshaw Tour

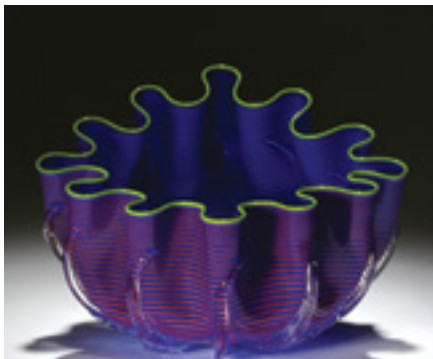
\$2,449 (double)
\$2,799 (single)
\$2,419 (triple)

Make checks payable to Superior Travel Service and send to:
Founders Society
ATTN: Billie Fisher
1120 E. Kearsley St.
Flint, MI 48503

For additional information, pick-up a brochure at the FIA's reception desk or call Billie Fisher at 810.232.6867.

The FIA Museum Shop is celebrating another summer of glass exhibits with merchandise for everyone. Come take a look and check out our annual summer clearance sale!

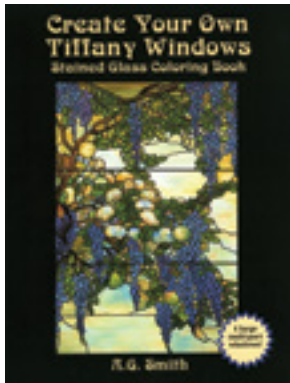
The mosaic jewelry collection, made from hundreds of pieces of millefiori glass chips, adds great color and sparkle to any outfit.



EpiphanyGlassStudio, of Pontiac, Michigan, creates stunning free-form glass pieces.



Seattle's Glass Eye Studio makes paperweights that are great gifts for Mother's Day, graduations, and weddings.



Tiffanycoloringbooks and glass beaded animals will keep children busy during summer vacation.



FIA Members receive a 10% discount on Museum Shop and Annex Shop purchases.

Mon-Wed, Fri & Sat: 10a-5p*
Thu: 10a-9p, Sun: 1p-5p

*The Museum Shop is open extended hours for select special events.

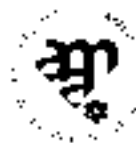


MUSEUM SHOP

The FIA Art School offers fall, winter and summer sessions for ages 2.5 through adult. Drawing, painting, sculpture, ceramics, weaving, and photography are among the classes offered. Non-members may call to receive a class brochure at 810.237.7315.

Benefits and privileges of FIA membership include 10% discount in the Museum Shop and The Café; a 20% discount and early registration privileges on Art School classes, discounts on ticketed events, free admission to temporary exhibitions; membership in the Founders Society; Founders Art Sales & Rental privileges; invitations to opening receptions, lectures, and special events; FIA Members Magazine; recognition in the Members Magazine and Annual Report; and inclusion in two reciprocal membership programs for members at the \$100 level and above.

Rubens Society Members are individuals and corporations supporting FIA membership at the \$1,000 level and higher and are invited to three exclusive events each year.



The Flint Institute of Arts is a non-profit, equal opportunity employer and provides programs and services without regard to race, color, religion, national origin, age, sex or handicap.



FIA Exhibitions and Programs are made possible in part with the support of the Michigan Council for Arts and Cultural Affairs, a partner agency of the National Endowment for the Arts.

This magazine, made possible through a generous donation by the Founders Society, is published five times per year for mailing to FIA members, museums and libraries around the country.

Mailing Address
1120 E. Kearsley Street
Flint, MI 48503-1915

Telephone
810.234.1695

Fax
810.234.1692

Website
www.flintarts.org

Office Hours
Mon-Fri, 9a-5p

Gallery Hours
Mon-Wed & Fri, 12p-5p
Thu, 12p-9p
Sat, 10a-5p
Sun, 1p-5p
Closed on major holidays

Theater Hours
Fri & Sat, 7:30p
Sun, 2p

Museum Shop
810.234.1695
Mon-Wed, Fri & Sat, 10a-5p
Thu, 10a-9p
Sun, 1p-5p

The Café
810.234.1695
Mon-Wed & Fri, 9a-5p
Thu, 9a-9p
Sat, 10a-5p
Sun, 1p-5p

The Museum Shop and The Café are open extended hours for select special events.

Founders Art Sales & Rental Gallery
810.237.7321
Tue-Fri, 10a-5p
Sat, 11a-3p
Sun, 1p-5p
or by appointment

Admission to Temporary Exhibitions

FIA members	FREE
Adults	\$7.00
12 & under	FREE
Students w/ ID	\$5.00
Senior citizens 62+	\$5.00

TARGET FREE SATURDAYS