

FIA magazine

SUMMER 2018



CONTENTS

executive director	1	founders society	21
exhibitions	2-7	education	22-23
acquisitions	8-9	art school	24-27
art on loan	10	contributions	28-29
calendar	11	membership	30-32
films	12-13	museum shop & café	33
news & programs	13-21		

Office Hours

Mon-Fri, 9a-5p

Gallery Hours

Mon-Fri, 12p-5p; Sat, 10a-5p;

Sun, 1p-5p

Closed on major holidays

FIA Theater Hours

Fri & Sat, 7:30p; Sun, 2p

Museum Shop & Art School Gallery

810.234.1695

Mon-Sat, 10a-5p; Sun, 1p-5p

The Palette Café

810.249.0593

Mon-Fri, 9a-5p; Sat, 10a-5p;

Sun, 1p-5p

The Museum Shop, Art School Gallery, and The Palette Café are open late for select special events.

Admission

FIA members

FREE

Adults

\$7.00*

12 & under

FREE

Students w/ ID

\$5.00*

Senior citizens 62+

\$5.00*



FREE SATURDAYS

Website

flintarts.org

Address

1120 E. Kearsley St.

Flint, MI 48503

Telephone

810.234.1695

Fax

810.234.1692

Board of Trustees

Thomas J. Mitchell

President

Thomas B. Lillie

First Vice-President

Louis A. Hawkins

Second Vice-President

Kathryn Boles

Secretary

Martha Sanford

Treasurer

Dean Yeotis

Immediate Past President

Ann K. Chan

Janice T. Harden

Richard Harris

Lynne Hurand

Raymond J. Kelly III

Alan Klein

Jimmy King

Jamile Lawand

Mark Lippincott

Eureka McCormick

Bill Moeller

Elizabeth S. Murphy

Jay Nelson

Michael Rucks

Ira Rutherford

Mary Coe Ryan

Elisabeth Saab

Sheila Smith

Founders Society President

Patt Spangler

Lynne A. Taft-Draper

FOMA President

Jan Werschky

Shannon Easter White

FCCC Board Representatives

Steve Heddy

Honorary Trustee

Elizabeth Neithercut

Administration

John B. Henry

Executive Director

Michael A. Melenbrink

Director of Finance & Administration

Kathryn K. Sharbaugh

Director of Development

Tracee J. Glab

Curator of Collections & Exhibitions

Monique M. Desormeau

Curator of Education

Donovan Entrekin

Director of the Art School

Sarah Mullane

Director of Member & Guest Relations

cover image

Josh Simpson

American, b. 1949

Tiny Little Inhabited World, 1997

Glass

2⁷/₈ inches diameter

Gift of Genevieve and Richard

Shaw, 2008.232

From the Executive Director

Works on Loan

Summer is the season for spending time outdoors, on road trips, family reunions, and graduations. A few of the artworks in the FIA's collection will also be on the road, visiting California, Florida, Chicago, and nearby Bloomfield Hills. These works will be on view in temporary exhibitions that many visitors will encounter on their summer vacations. Lending artwork to other museums is an important part of increasing the FIA's visibility nationally and internationally. The FIA, in turn, relies upon other museums for loans from their collections in order to present exhibitions such as *From Lens to Eye to Hand: Photorealism 1969 to Today*, currently on view.

Lending works selected from the collection to other museums is a collegial courtesy to both share artwork and increase scholarship. In most cases, for each exhibition to which we lend, new research is published, providing new insights and attention to our collection. The loan process usually begins at least a year, sometimes as much as three or even more, in advance of the opening of an exhibition. Each loan request is evaluated by the curatorial staff to assess whether the object is stable to travel and whether the borrowing venue meets established museum standards. Factors such as security, climate control, and content of the exhibition are all considered before bringing the loan request to the FIA Board of Trustees for approval. With all loan requests, the borrower pays for costs related to lending, which include packing, shipping, and, when necessary, courier expenses.

The following are works on loan with more detailed information on page 10.

Edmund Lewandowski's *Dynamo* to Fine Arts Museums of San Francisco (de Young) through August 12th, and then to Dallas Museum of Art, in the fall (*The Cult of the Machine: Precision in American Art*)

Chakaia Booker's *India Blue* to Museum of Contemporary Art, Jacksonville, Florida, through September, and then to South Carolina in the fall (*A Dark Place of Dreams: Louise Nevelson with Chakaia Booker, Lauren Fensterstock, and Kate Gilmore*)



Robert Longo's *Gretchen* to Cranbrook Art Museum through October (*Too Fast to Live, Too Young to Die*)

Charles White's *Wanted Poster Series #17* to Art Institute of Chicago, through September, and later to New York in the fall (*Charles White Retrospective*)

Later this year, John Singer Sargent's *Garden Study of the Vickers Children* to Stockholm, Sweden and Esrastus Field's *Taj Mahal* to Cologne, Germany.



John Singer Sargent
American, b. Italy,
1856-1925

Garden Study of the Vickers Children, 1884
Oil on canvas
54¹/₂ x 36 inches
Gift of the Viola E. Bray
Charitable Trust via
Mr. and Mrs. William L.
Richards, 1972.47

While works are on loan, other works are brought out from storage and installed in the galleries. With only about 5% of the collection on view at any one time, this provides an opportunity for visitors to see works they may never have seen before.

John B. Henry
Executive Director

This magazine, made possible through a generous donation by Lynne Hurand, is published four times per year for mailing to FIA members, museums, and libraries around the country.

The FIA is a non-profit, equal opportunity employer, and provides programs and services without regard to race, color, religion, national origin, age, sex or handicap.

Operating support for the FIA is provided in part by the Charles Stewart Mott Foundation.



FIA Exhibitions and Programs are made possible in part with the support of the Michigan Council for Arts and Cultural Affairs, a partner agency of the National Endowment for the Arts.





Peter Milton
American, b. 1930
Garden with Henry, 1993
Etching and engraving
20 x 22 1/2 inches
Collection of Michael Farrell
and Marc Herrick
© 2018 Peter Milton / Artists
Rights Society (ARS), New York

Lecture

June 23 • 2:00p • FIA Theater

Peter Milton: In Search of Lost Time

Guest Lecturer: Dr. Michael Farrell

Peter Milton is one of the foremost printmakers working in the United States today. Since the 1960s, his artistic output has increased and evolved, as have the phenomenal imagery and complex techniques he employs. Michael Farrell presents a biographical sketch that helps to explain the visual aspects and meanings of some of Milton's prints, which include inspiration from the writings of Henry James and images borrowed from important 20th-century photographers.

Michael Farrell is a Professor Emeritus at the University of Windsor. He has taught Art History at Central Michigan University and the College for Creative Studies, and served as adjunct education curator at the Detroit Institute of Arts and the Detroit Historical Museum. He has lectured at the Flint Institute of Arts; the Philbrook Museum, Tulsa; both the Birmingham and Montgomery Museums of Art in Alabama and the Museum of Fine Arts, Boston, among others. Professor Farrell has conducted tours of Europe and the United States since 1974 and believes that there is a profound difference between looking and seeing. In his inspiring and entertaining presentations, the difference becomes apparent.

Graphics Gallery
is sponsored by



In Search of Lost Time: Peter Milton Prints

through 7.15.18

Graphics Gallery

Be sure not to miss this exhibition of works by master printmaker Peter Milton. While Milton began his career as a painter, he turned to etching and engraving in the 1960s. Testing positive for color deficiency in 1962 also influenced his decision to work exclusively in black and white. According to the artist, "I relish drawing and the craft of engraving, and [...] everything [...]—*dramatis personae*, details, architecture—is drawn by hand. During the first, planning phase of the image, I construct an initial collage, and I do find a photocopier useful at that point for enlarging and reducing elements. But in the next phase I modify and change these elements quite intentionally in a drawing which serves as the basis for the finished print."

In Search of Lost Time is the title of a 2006 print by Milton, which comes from an English translation of French author Marcel Proust's monumental novel *À la recherche du temps perdu*, published between 1913 and 1927. As the title of the exhibition, it fittingly alludes to the enigmatic and fantastical narratives for which Milton is known in his elaborately detailed, large-scale etchings. Combining the real and surreal, Milton places photographic rendering of figures amidst soft-focused, ethereal atmospheres that seem like a dream.

From Lens to Eye to Hand Photorealism 1969 to Today

through 8.12.18

Hodge & Henry Galleries

Since the invention of photography in the mid-19th century, artists have used photographs as both a tool and an inspiration for their work; but the Photorealists were the first to translate information from one medium to another unapologetically. In a period where abstraction was dominating the art world, these artists presented viewers with the most commonplace subject matter that mimicked the most popular type of image—the photograph.

Some artists elaborated on the hyperreal elements of a photograph by enhancing every detail, while others faithfully re-created the blurring that occurs in photographs with a shallow depth of field. Still others experimented with cropping to create paintings that were reminiscent of snapshots. This exhibition brings together key works from public and private collections in a broad survey of this movement. It features paintings dating from the late 20th century to the present, illuminating the very definition of Photorealism from its beginning up to today. A catalogue accompanies this exhibition.



Exhibition Sponsor



The exhibition was organized by the Parrish Art Museum, Water Mill, New York.

The exhibition, *From Lens to Eye to Hand: Photorealism 1969 to Today*, is made possible, in part, by the generous leadership support of Louis K. and Susan P. Meisel, Barbara Slifka, Linda Hackett and Melinda Hackett/ CAL Foundation, Sandy and Stephen Perl binder, Jonathan Novak Contemporary Art, Los Angeles, The Muriel F. Siebert Foundation, and Arlene Kaufman and Sanford Baklor. Public Funding provided by Suffolk County.

Audrey Flack
American, b. 1931
Wheel of Fortune,
1977-1978
Acrylic and oil on canvas
96 x 96 inches
Parrish Art Museum,
Water Mill, New York, Gift
of Louis K. and Susan P.
Meisel, 2016.20

Breaking with Tradition Contemporary Ceramics

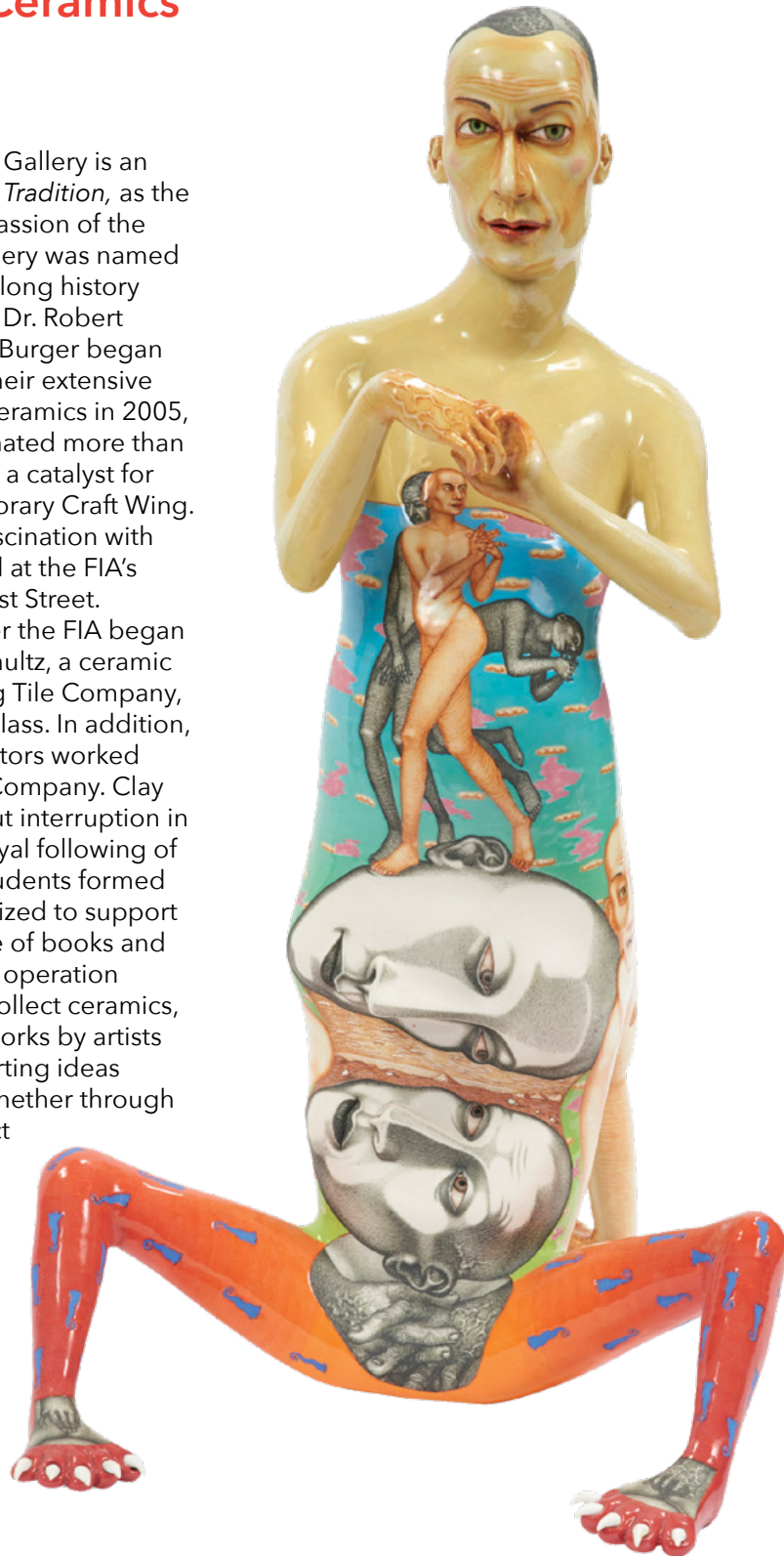
through 1.27.19

Harris - Burger Gallery

The FIA's new Harris - Burger Gallery is an ideal venue for *Breaking with Tradition*, as the exhibition both reflects the passion of the collectors after which the gallery was named and continues the museum's long history with contemporary ceramics. Dr. Robert and Deanna "Debbie" Harris Burger began giving selected works from their extensive collection of contemporary ceramics in 2005, and since that time, have donated more than 200 works. This gift served as a catalyst for the addition of the Contemporary Craft Wing. Debbie Burger credits her fascination with art to taking classes as a child at the FIA's previous location on West First Street.

In 1930, just two years after the FIA began as an Art School, J. Emmet Shultz, a ceramic modeler at the AC Spark Plug Tile Company, introduced a clay modeling class. In addition, several FIA Art School instructors worked at the Flint Faience and Tile Company. Clay classes have operated without interruption in the Art School, attracting a loyal following of ceramic students. In 1978, students formed the Clay Club, a group organized to support clay classes and the purchase of books and equipment, which remains in operation today. The FIA continues to collect ceramics, and this exhibition features works by artists bending the rules and subverting ideas about traditional ceramics, whether through use of unconventional subject matter, experimental treatment of materials, or as a means of individual expression.

Sergei Isupov
Russian, b. 1963
Shadow, 1999
Glazed ceramic
19 x 11 x 10 1/2 inches
Gift of Mary Mallery Davis, by
exchange, 2016.12



Rick Ayotte
American, b. 1944
*On Golden Pond
magnum*, 1995
Glass
5 inches diameter
Private Collection

Small Worlds

through 5.29.19

Ann K. Walch-Chan Gallery

Small Worlds offers a glimpse into the history of glass paperweights. These small objects, first manufactured in the mid-19th century, combined functionality with beauty. Lasting only 25 years, the classical period of paperweight manufacture declined until the mid-20th century when revived interest spawned a new generation of artists. This exhibition highlights paperweights from the classical period through present day and includes numerous works by the patriarchs of the contemporary paperweight movement, Paul Stankard and Rick Ayotte.

Paul Stankard is recognized internationally as a living master in the art of the paperweight. He worked in the scientific glassblowing industry from 1963 to 1972, but a fascination with antique French paperweights prompted him to become a glass artist. He

works on a minuscule scale, crafting tiny, anatomically correct flowers, bees, nuts, moss, and human bodies that are suspended in clear glass.

After graduating high school in 1962, Rick Ayotte began a 10-year career as a scientific glassblower, working alongside Paul Stankard at the Macalaster Scientific Corporation in Delaware. Stankard, who had already begun his career as a paperweight artist, encouraged Ayotte's talent. For Ayotte, "there was something pleasing and intimate about the spherical shape of paperweights that really appealed to me. It opened a lot of doors for me artistically." His artwork primarily explores the flora and fauna of the natural world.

Surrealismo: Ojos de México

7.21.18 - 10.14.18

Graphics Gallery

Surrealismo: Ojos de México (Surrealism: Eyes of Mexico) features photographs that demonstrate the enduring influence of Surrealism on photography in Mexico. Surrealism as a style emerged from the ashes of World War I. At a time when artists and intellectuals turned against the "high culture" of the Europe that they believed spawned the horrors of war, some artists viewed Surrealism as a mechanism for celebrating the mysteries of the subconscious mind. Dreams, desires, and fantasies were depicted in strange juxtapositions of time and space. It explored the irrational and the unexpected in life.

French poet and Surrealist André Breton came to Mexico in 1938, met with artists, and proclaimed, "Mexico tends to be a Surrealist *place par excellence*." Some Mexican artists resisted the Surrealist label, but the impact of the style was significant. While some photographs in this exhibition reveal the playful and irreverent side of Surrealism, most have a serious and unifying subject—

Mexico and its people. The style provides a lens for viewing a country with many contrasts, with subjects that are unexpected, ironic, sad, humorous, frustrating, and hopeful. This exhibition offers an arresting overview of modern Mexican photography.



▲ **Graciela Iturbide**
Mexican, b. 1942
X-Ray of a bird, Qaxaca, Mexico, 1999
Gelatin silver print
20 x 16 inches

◀ **Lola Álvarez Bravo**
Mexican, 1903-1993
Judas, 1942
Gelatin silver print
8 x 10 inches

Graphics Gallery is sponsored by



June

Storm & Stress

Displays of violent weather conditions, electrical storms, tornados, floods, fires, and other eruptions are contrasted and equated with equally awe-inspiring images of technology that harnesses or mimics nature. Pitting the specter of nature against technology in time-lapsed images, this stirring video paints a portrait of the encounter between the constructed and the natural, between human control of power and that which eludes man's control.



Doug Hill
American
Storm and Stress, 1986
48:00 minutes
Image courtesy of the Video Data Bank, www.vdb.org



July

Flint Youth Film Festival

In conjunction with the Flint Youth Film Festival, the FIA will exhibit a number of works by young, local filmmakers throughout the month of July. The Flint Youth Media Project introduces the art of filmmaking to people, ages 13-30 and college students regardless of age. In addition to a series of free filmmaking workshops, the program provides opportunities for participants to share their work with peers, the public, and professional filmmakers, and screenwriters.



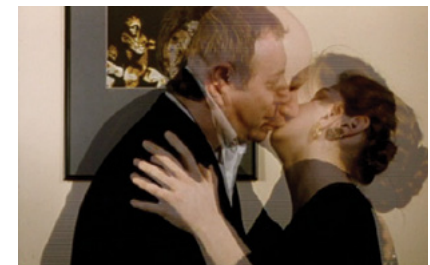
Flint Youth Film Festival

August

Dr Jekyll & Mr Hyde

Imagine that the camera is possessed with a psychosis similar to human schizophrenia. Suppose that this disease subtly changes every single frame of film while leaving the narrative superficially intact. Then imagine that these symptoms came on because of the trauma of recording bizarre or horrific events, such as those of the 1941 horror film *Dr Jekyll and Mr Hyde*. Scenes from the Victor Fleming movie are restaged frame-by-frame with new performers occupying the body spaces of the original cast.

Paul Bush
American, b. 1956
Dr Jekyll and Mr Hyde, 2001
5:15 minutes
Image courtesy of the Video Data Bank, www.vdb.org



The Flint Institute of Arts' permanent collection is a resource for creating exhibitions and developing educational programs for museum visitors, including scholars and students.

The growth of the collection is supported by gifts from civic-minded individuals who donate funds or works of art to the permanent collection. In addition, the Curatorial Department and the Collections Committee work together to identify strategies and seek new funds for the acquisition of artworks that meet museum objectives and the expectations of an ever inquisitive and knowledgeable public. The staff conducts work essential to the care and management of the collection, including research, documentation, preservation, presentation, and interpretation.

Rembrandt Harmenszoon van Rijn

Dutch, 1606–1669

Samuel Menasseh ben Israel,
1636

Etching on paper
5¼ × 4¼ inches

Gift of Anne Lindell Hagiwara in memory of her parents, Alice Stemsrud and Herman Shlionsky, 2017.200



Paul Frets

American, born 1935

Untitled (from Genesis Series),
1969

Acrylic on canvas and wood
24 × 22 × 3½ inches
Gift of Paul and Jerry Frets,
2017.201

Paul Frets

American, born 1935

Untitled (from Genesis Series),
1969

Acrylic on canvas and wood
24 × 22 × 3½ inches
Gift of Paul and Jerry Frets
2017.202

Paul Frets

American, born 1935

Passage 125, 1971

Acrylic on canvas and wood
19¾ × 19¾ × 2¾ inches
Gift of Paul and Jerry Frets,
2017.203

Olmec culture

Celt, 1200–600 BCE

Jade

7¾ inches

Gift of Perry J. Lewis, 2017.204



Earl Barnett

American, 1917–2003

Untitled (Piano Player), n.d.

Oil on canvas

20 × 28 inches

Gift of the Estate of Seymour
and Audrey Slott, 2017.205



Seymour Slott

American, 1920–1977

Portrait of Eddie, n.d.

Oil on canvas

30 × 17 inches

Gift of the Estate of Seymour
and Audrey Slott, 2017.206

Sarah Pace Carothers

American, 1910–1999

Women Working (African

American), ca. 1940

Aquatint on paper

4⅞ × 3¼ inches

Gift of Dr. Jamile T. Lawand,
2017.207

Robert Kipniss

American, born 1931

As The Day Ends (preparatory

drawing), 2016

Ink on paper

8⅞ × 5⅞ inches

Gift of James F. White,
2017.208.1

Robert Kipniss

American, born 1931

As The Day Ends (printing

plate), 2016

Copper plate

7⅞ × 7⅞ inches

Gift of James F. White,
2017.208.2

As The Day Ends (printing

plate), 2016

Copper plate

7⅞ × 7⅞ inches

Gift of James F. White,
2017.208.2

Ben Shahn

American, born Lithuania,
1898–1969

Skowhegan, 1965

Wood engraving on paper

16¼ × 12¼ inches

Gift of Jonni Kaberle, 2017.212

Kathryn Kennedy Sharbaugh

American, born 1948

A Thin Net, 2004

Porcelain

1 × 15 × 12½ inches

Gift of Jonni Kaberle, 2017.213

Slocum

American

Untitled, n.d.

Oil on masonite

20 × 25 inches

Gift of Jonni Kaberle, 2017.214



Mose Tolliver

American, 1919–2006

Racing Horse, n.d.

Oil on wood

12 × 19¼ inches

Gift of Jonni Kaberle, 2017.215

Teotihuacan

Tecali, n.d.

Calcite

7¾ inches

Gift of an Anonymous Friend,

2017.219

Chontal

Mask, n.d.

Granite

6⅝ inches

Gift of an Anonymous Friend,

2017.220



Olmec culture

Incised Mask, n.d.

Green stone

7¼ inches

Gift of an Anonymous Friend,
2017.216



Robert Kipniss

American, born 1931

As The Day Ends, 2016

Mezzotint on paper

12½ × 10⅞ inches

Gift of James F. White,
2017.208.3

Robert Kipniss

American, born 1931

Strong Trees in the Wind

(**printing plate**), 2011

Copper plate

7¾ × 6⅞ inches

Gift of James F. White, 2017.209

Attributed to William F.

Cogswell

American, 1819–1903

Mrs. John Lafon and Mary

Lafon, n.d.

Oil on canvas

37 × 31 inches

Gift of Art and Susan Yeotis,
2017.210

Stephan Chizmarik

Austria-Hungary, 1898–1962

Untitled, n.d.

Oil on masonite

20 × 24 inches

Gift of Jonni Kaberle, 2017.211



Maya culture

Mosaic Mask, n.d.

Jade

3¾ inches

Gift of an Anonymous Friend,

2017.217

Olmec culture

Blind Mask, n.d.

Green stone

8¼ inches

Gift of an Anonymous Friend,
2017.218



Rembrandt Harmenszoon van Rijn

Dutch, 1606–1669

Samuel Menasseh ben Israel,

1636

Etching on paper

5¼ × 4¼ inches

Gift of Anne Lindell Hagiwara in memory of her parents,
Alice Stemsrud and Herman Shlionsky, 2017.200

Dutch artist Rembrandt Harmenszoon van Rijn began etching early in his career, eventually creating about 300 prints. Though he was also a painter, he rarely depicted the same subjects in both media, and only sometimes reproduced his paintings in print form. Above all, he was a great innovator and experimenter in this medium, and his impact on printmaking is still reflected in etchings produced today.

This small portrait is said to depict Samuel Menasseh ben Israel (1604–1657), also known by his Portuguese name Manoel Dias Soeiro. Menasseh ben Israel was a well-known rabbi, kabbalist, writer, diplomat, publisher, and printer, working in Amsterdam at the same time of Rembrandt. Menasseh's parents left Portugal because of the Inquisition and moved to the Netherlands in 1610. He established the first Hebrew press in the Netherlands and gained an international reputation explaining the doctrines and beliefs of Judaism. Menasseh was friends with Rembrandt, who lived near him in the Breedstraat. The rabbi supplied Rembrandt with various texts and Hebrew writings for use in his paintings, and Rembrandt illustrated one of his books with etchings.

Art on Loan

The following artworks are on loan from the FIA to the following exhibitions:

The Cult of the Machine: Precision in American Art

Fine Arts Museums of San Francisco (de Young)

San Francisco, California
3.24.18 - 8.12.18

Dallas Museum of Art

Dallas, Texas
9.16.18 - 1.6.19



<
Edmund Lewandowski
American, 1914-1998
Dynamo, 1948
Oil on canvas
36¹/₈ x 30⁷/₈ inches
Gift of Mr. and Mrs. Harold L. Frank, by exchange, 1993.38

>

Chakaia Booker
American, born 1953
India Blue, 2001
Rubber tires and wood
73 x 43 x 48 inches
Bequest of Russell J. Cameron,
by exchange, and partial gift
from the Friends of Modern
Art, 2002.11



A Dark Place of Dreams: Louise Nevelson with Chakaia Booker, Lauren Fensterstock, and Kate Gilmore

Museum of Contemporary Art

Jacksonville, Florida
4.28.18 - 9.2.18

Gibbes Museum of Art

Charleston, South Carolina
9.28.18 - 1.6.19



Charles White: A Retrospective

The Art Institute of Chicago

Chicago, Illinois
6.8.18 - 9.3.18

The Museum of Modern Art

New York, New York
10.2.18 - 1.13.18

Los Angeles County Museum of Art

Los Angeles, California
3.3.19 - 6.9.19

>

Robert Longo
American, born 1953
Gretchen, 1984
Lithograph on paper
67¹³/₁₆ x 38¹³/₁₆ inches
Gift of Genevieve and Richard
Shaw, by exchange, 2011.130



Too Fast to Live, Too Young to Die

Cranbrook Art Museum

Bloomfield Hills, Michigan
6.15.18 - 10.7.18

^

Charles White
American, 1918-1979
Wanted Poster Series #17,
1971
Oil on pencil on poster board
60 x 30 inches
Gift of Mr. and Mrs. B. Morris
Pelavin, 1971.43

MAY

31 Thu

7:30p
FOMA Film
Film Stars Don't Die in Liverpool

JUNE

1 FRI

7:30p
FOMA Film
Film Stars Don't Die in Liverpool

2 SAT

7:30p
Celebration
The PARTY

3 SUN

2:00p
FOMA Film
Film Stars Don't Die in Liverpool

6 WED

12:15p
Art à la Carte
Joan Mitchell: Portrait of an Abstract Painter

9 FRI

7:30p
FOMA Film
Loving Vincent

10 SAT

10:00a
FOMA Event
Flint Art Fair
7:30p
FOMA Film
Loving Vincent

11 SUN

11:00a
FOMA Event
Flint Art Fair
2:00p
FOMA Film
Loving Vincent

13 WED

12:15p
Art à la Carte
Robert Motherwell & The New York School: Storming the Citadel

20 WED

12:15p
Art à la Carte
Hans Hofmann: Artist/Teacher Teacher/Artist



21 THU

3:00p
Family Program
Baby Tour

23 SAT

1:00p
Art School
Youth Membership Activity
2:00p
Lecture
Peter Milton: In Search of Lost Time

27 WED

12:15p
Art à la Carte
Robert Indiana: American Dreamer



JULY

4 WED

Closed
Holiday
Independence Day



11 WED

12:15p
Art à la Carte
Chuck Close: A Portrait in Progress

18 WED

12:15p
Art à la Carte
Sign Painters
3:00p
Family Program
Baby Tour

21 SAT

10:00a
Opening Exhibition
Surrealismo: Ojos de México

25 WED

12:15p
Art à la Carte
Typeface: Great Characters Both Wooden and Human

AUGUST

1 WED

12:15p
Art à la Carte
More Human Than Human

4 SAT

10:00a
Art School Program
Wet Paint Day

8 WED

12:15p
Art à la Carte
The Day Pictures Were Born
6:00p
The Sheppy Dog Fund Lecture
Rembrandt's Representations of Biblical Scenes

14 TUE

3:00p
Family Program
Baby Tour

15 WED

12:15p
Art à la Carte
The Art of Persuasion

22 WED

12:15p
Art à la Carte
Once Upon a Time

28 TUE

5:30p
FOMA Event
Film Society Sneak Preview

29 WED

12:15p
Art à la Carte
To Death and Back

The Flint Institute of Arts & the Friends of Modern Art invite you to attend the **2018-19 Film Society Sneak Preview**
Tuesday • August 28
 5:30p-6:30p
 FIA Theater & Lobby

- Announcements of upcoming titles
- Movie trailers
- Early enrollment in Film Society
- Light refreshments

Free admission to preview

RSVP by August 21 to Valarie Bailie at 810.234.1695 or vbailie@flintarts.org.



The Friends of Modern Art (FOMA) film series is made possible through support from membership in the FIA Film Society, beginning its eighth year. We invite you to support our great 2018-19 film series by joining today.

\$100 Ticketholder Basic Benefits

- 36 transferable tickets good for any screening during the membership year (excludes special series films)
- A monthly "Hello, Film Lovers" newsletter from Ed Bradley, FIA Associate Curator of Film

\$500 Supporting Player & \$1,000 Leading Actor/Actress Benefits

- Basic benefits
- Recognition in FIA Magazine, FIA annual report, and film pre-screenings
- A generous tax deduction

\$2,500 Screenwriter Benefits

- Basic benefits and above
- Listing on film posters
- Logo and link on FIA website
- 72 transferable tickets

For more information, contact the Membership office at 810.234.1695 or vbailie@flintarts.org.

Film Society Membership Form

- \$100** Ticketholder
- \$500** Supporting Player
- \$1,000** Leading Actor/Actress
- \$2,500** Screenwriter

Total Amount Enclosed \$ _____

2 Payment Plan Option

\$ _____ by 12/31/18 \$ _____ by 5/31/19

Exact name of the individual/company/foundation to appear on all recognition and donor listings:

Contact Information

Name _____

Address _____

City _____ State _____ Zip _____

Phone _____ Email _____

Method of Payment

- Check payable to "FIA Film Society"
- VISA MasterCard Discover AMEX

Account # _____ Exp. Date _____

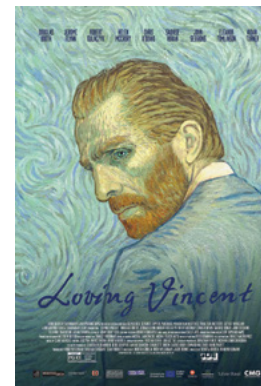
Signature _____

Please return this form by 11/2/18 to:

Flint Institute of Arts
 FIA Film Society
 1120 E. Kearsley St
 Flint MI 48503

Screenings
 Fri & Sat @ 7:30p
 Sun @ 2p
 *Thu, May 31 @ 7:30p

Admission
 \$5 members
 \$6 non-members
 \$4 FOMA members



Film titles are subject to change.

May 31* & June 1, 3

Film Stars Don't Die in Liverpool

(U.K., 2017) Directed by Paul McGuigan, 105 min., rated R
 Based on Peter Turner's memoir, this film follows the playful but passionate relationship between a young Englishman (Jamie Bell) and the eccentric Oscar-winning actress Gloria Grahame (Annette Bening) in 1978 Liverpool. Their passion for life, and for each other, is tested by events beyond their control. Julie Walters and Vanessa Redgrave also star.

June 8, 9, 10

Loving Vincent

(U.K./Poland, 2017) Directed by Dorota Kobiela and Hugh Welchman, 94 min., rated PG-13
 To cap the 2017-18 FOMA season, we're bringing back an Oscar-nominated animated film – a speculative account of the final days of Vincent van Gogh in which a young man attempts to deliver the troubled artist's final letter. Don't miss this wonderful tribute to van Gogh's genius in what *The New York Times* calls "an unusual kind of biopic."

Films are supported by **FOMA** FRIENDS OF MODERN ART



Additional sponsors



More Than 950 Museums!

If you are an FIA member at the Sustainer, Sponsor, Donor, or Rubens Society level, as you plan your road, plane, or day trip, be sure to take your FIA membership card. At these membership levels, your FIA card allows you admission to more than 950 participating museums in the U.S., Canada, El Salvador, Mexico, and Bermuda.



While you travel, be sure to take your FIA Membership Card.

Just present your membership card validated with the gold North American Reciprocal sticker to receive membership privileges (guests are not included). For a full listing of participating museums, visit flintarts.org, select Membership, then Reciprocal Listing and click on the link. If you do not have access to the internet, we will mail a list to you.

To upgrade your membership to one of the levels listed above, contact the Membership Coordinator at vbailie@flintarts.org or 810.234.1695. You can also upgrade on our website.



Fired Up FIA Celebrates Community Weekend

Fired Up!

From the dedication of the Harris - Burger Gallery on Friday night to the last gather of glass pulled from the Hot Shop furnace on Sunday afternoon, the FIA Community Weekend Grand Opening was a red hot success.

The weekend began on Friday evening, when Rubens Society members got a sneak preview of the new collections. On Saturday morning, a capacity crowd was treated to a ribbon cutting ceremony filled with affection, humor, and hope provided by dignitaries like Senator Debbie Stabenow and Charles Stewart Mott Foundation Chairman and CEO Bill White, as well as FIA Executive Director John Henry. Ridgway White, Mott Foundation President, cut a glass ribbon in the state-of-the-art Hot Shop, which opened both the glass arena and Contemporary Craft Wing to the public. Admission was free for all on both Saturday and Sunday, thanks to Huntington Bank. Visitors enjoyed docent-informed tours focused on the Sherwin and Shirley Glass Collection of Contemporary Glass, studio demonstrations in the Art School, and lectures on both glass and Photorealism. The Hot Shop, which started its schedule of free weekly demonstrations through the generosity of McLaren Health Care, was on fire throughout the weekend. Glass blowers performed shows on the hour, educating observers on the history and techniques used for centuries in the creation of glass objects.

The FIA staff and faculty thank our patrons, volunteers, and visitors for a sizzling celebration of our new spaces.





In celebration of the FIA's 90th anniversary, you can join The Contemporaries at a special rate! For a limited time, one person is \$50 and two people are \$75. You must be an FIA member at the Individual level (\$30) or higher. FIA members 46 and up may join as supporters. Payment plans are available. Join now to attend The Contemporaries' first exclusive event.

For more information, speak with a Visitor Services Representative or go to flintarts.org.

The Contemporaries is an affiliate group of the Flint Institute of Arts, geared towards FIA members ages 21-45. The Contemporaries gain exclusive access to the FIA through special events, tours, workshops, and networking with other young professionals.

NEWS & PROGRAMS

APPLICATION

Name (1) _____
 Birthdate _____ T-Shirt Size _____
 Phone _____ Email _____
 Name (2) _____
 Birthdate _____ T-Shirt Size _____
 Phone _____ Email _____
 Address _____
 City _____ State _____ Zip _____

- Current FIA member at the \$30 level or higher (see page 30 for levels).
- Upgrade my membership or join the FIA at the \$30 level or higher with an additional: \$ _____

- One Person** **Two People**
- \$50 \$75

- Check payable to "Flint Institute of Arts"
- VISA MasterCard Discover AMEX

Acct # _____ Exp. Date _____

Signature _____

Mail this form to: The Contemporaries
 Flint Institute of Arts
 1120 E. Kearsley St.
 Flint, MI 48503



PRESENT

THE PARTY

THE ART OF GLAMOUR

SATURDAY 6.2.18 7p-12a

Enjoy a red-carpet entrance into a glamorous evening of fashion and photography in the newly expanded FIA. You're the focus in one of our specially designed photo booths—tag and share on social media to print a keepsake right at the event. Immerse yourself in artwork, enjoy signature cocktails, and dance the night away.

TRENDY CHIC ATTIRE

The PARTY spotlights the museum collection, entertainment by Ben Sharkey and DJ Captn20, a cash bar, and cutting edge cuisine by Redwood Steakhouse.

Enter to win a fabulous shoe package and retreat from Neiman Marcus valued at over \$3,000.

Complimentary valet parking

\$130 per person in advance
 \$150 per person at the door
 (includes strolling dinner and 2 drink tickets)

As the FIA's biggest fundraiser of the year, proceeds help ensure that the innovative exhibitions, education programs, and partnerships that have been the Museum's hallmarks will continue to thrive.

Flint Institute of Arts
 1120 E. Kearsley St., Flint
 810.234.1695
flintarts.org

NEWS & PROGRAMS

Catherine Kernan

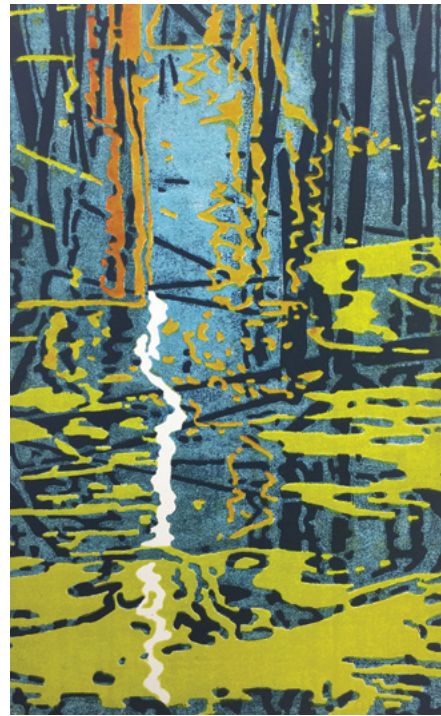
Each year, the Flint Print Club commissions an artist to produce a print to augment both the FIA's collection and the pursuit of personal collecting. The Club is limited to 100 members in good standing at the Family level or above. Flint Print Club dues are \$250.00 annually, which provide each participating member with a selected print and related programs.

The FIA was pleased to work with Catherine Kernan for the 2017 commissioned print—the club's first-ever relief print in its 11-year history. As an experienced and dedicated teacher of printmaking for over 30 years, Kernan exemplifies the club's mission of educating the general public about prints and printmaking. She is a nationally recognized advocate and practitioner of non-toxic printing technologies and uses environmentally friendly soy-based inks as opposed to conventional petroleum-based inks.

Her prints are inspired by patterns, rhythms, and reflections found in the natural world, specifically the juxtaposition of water and rock. "Working at the interface between printmaking and painting, I use large-scale woodblocks in unorthodox ways as a transfer tool to build images layer-by-layer in a painterly process of controlled accident. No longer a purist, I exploit any available tool or means to transfer color and form to surface. Interruption and interference with the 'perfect transfer' are integral to the process."

Kernan received her BFA from the prestigious Cooper Union in New York City and her MFA from the University of Wisconsin/Madison. The recipient of numerous grants, she has exhibited her work widely and it is held in many public, private, and corporate collections across the United States.

To learn more about the artist, visit catherinekernan.com.



Catherine Kernan
American, b. 1948
Tracking Changes, 2017
Woodcut on paper
16 x 10 inches



Yes, I want to be a member of the Flint Print Club 2017-2018.

Membership Information

Circle: Dr. Mr. Mrs. Ms. Miss

Name _____

Address _____

City _____ State _____ Zip _____

Phone _____ Email _____

Methods of Payment

Check payable to "Flint Print Club" Visa MasterCard Discover AMEX

Account # _____ Exp. Date _____

Signature _____

- I am currently an FIA member at the \$50 level or higher (see page 30 for levels).
- I would like to upgrade my membership or join the FIA at the \$50 level or higher with an additional:
\$ _____

+ \$250.00 Flint Print Club dues

= \$ _____ **Total Payment**

PALETTE *Café*

Swing into summer with Friday Night Happy Hour on the FIA patio! Drink specials from 5:00p-9:00p every Friday night in July and August.

Follow the Palette Café on Facebook and Instagram for the detailed schedule and weekly food specials.

Patio Event Schedule

July 6 & August 3

(first Fridays)

Giant games on the patio!
Free Truly Spiked & Sparkling and Angry Orchard samples all evening.

July 13 & August 10

(second Fridays)

Artwalk at the FIA! Tour an exhibition with an FIA curator at 7:00p (30 people max). Artist demonstrations and hands-on activities from 6:00p-9:00p.

July 20 & August 17

(third Fridays)

Tito's YAPPY Hour. Bring your canine friend for toys and treats while you enjoy a cocktail!
\$1 of every Tito's sold will be donated to a local animal charity.

July 27 & August 24

(fourth Fridays)

Trivia! Teams of up to eight people compete for fun FIA prizes, with topics that include pop culture, sports, history and art!

Hours:

Mon-Fri, 9a-5p*

Sat, 10a-5p*

Sun, 1p-5p

*The Café is open extended hours for select special events.

Members receive a 10% discount at the Palette Café.



The Sheppy Dog Fund Lecture

August 8 • 6:00p • FIA Theater

Rembrandt’s Representations of Biblical Scenes

Guest Lecturer: Dr. Shelley Perlove, Professor of Art History

For more information about the upcoming Sheppy Dog Fund Lecture, please visit flintarts.org or the FIA Facebook page. FIA members will receive a reminder postcard for the lecture later this summer.



The Sheppy Dog Fund Lecture has been established to address the topics of art, religion, and history, and is funded annually by The Sheppy Dog Fund, Dr. Alan Klein, Advisor.

TAKE-A-SEAT

Give a Gift

Cheers to the Flint Institute of Arts as it celebrates its 90th year of operation!

To honor this memorable anniversary why not leave your mark with a gift to the FIA by sponsoring a theater seat? Treat yourself or your business; remember a friend or loved one with this lasting gift. Simply create an inscription to be engraved on a brass plaque that will be affixed to a seat of your choosing. Payment may be made all at once or in annual installments.

This gift is 100% tax deductible and supports the FIA’s Endowment Campaign.



The FIA honors and remembers Edith Gutow. Mrs. Gutow was a true patron of the arts. Her dedication and support of the FIA began in 1959.

Take-A-Seat Form

Payment Options

Seat - \$1,000

- A one time payment
- A pledge of \$500 per year for two years
- Instead of sponsoring a seat, I would like to make a gift to the Endowment Fund of \$ _____

Brass Plaque Inscription

Please clearly print the text as you would like it to appear on your brass plaque. It can be your name, a family name, a business name or a tribute to another person (three lines maximum, one character per box, blank spaces count as one character).

Method of Payment

Name _____
 Address _____
 City _____ State _____ Zip _____
 Check payable to "FIA Endowment Fund"
 VISA MasterCard Discover AMEX
 Account # _____ Exp. Date _____
 Signature _____

Return form to:
 Take-A-Seat
 Flint Institute of Arts
 1120 E. Kearsley St.
 Flint, MI 48503

For more information:
 contact Kathryn Sharbaugh
 at 810.234.1695 or
ksharbaugh@flintarts.org.

Your contribution is tax deductible in accordance with current law.

LOOKING FOR FAMILY ACTIVITIES THIS SUMMER?



Free Admission
2,000+
museums
 Memorial Day to Labor Day

The FIA joins museums across the nation offering free admission to active duty military and their families from Memorial Day to Labor Day. The Blue Star Museums program was established to acknowledge the many sacrifices made by our military personnel by making it possible for them to enjoy museums in cities throughout the U.S. Visit BlueStarMuseums.com for a list of other participating institutions.

Plan your museum trip at arts.gov/bluestarmuseums

#bluestarmuseums



Blue Star Museums is a collaboration among the National Endowment for the Arts, Blue Star Families, the Department of Defense, and more than 2,000 museums.

founders travel



The Founders Society hosts trips with a focus on art and culture. Trips include Michigan-based destinations and regional attractions, in addition to national and international hot spots.

A portion of ticket proceeds support FIA programs and exhibitions.



Tropical Costa Rica

November 8-16, 2018

9 Days • 13 Meals

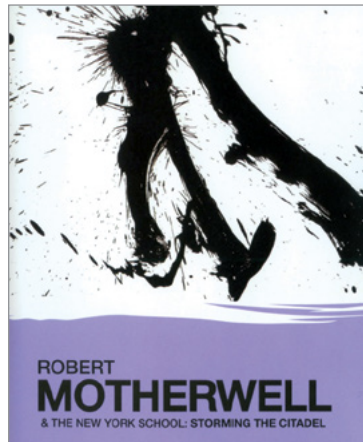
Double: \$3,049 pp Single: \$3,649 pp

Triple: \$3,019 pp

Costa Rica is a paradise teeming with exotic plants and incredible animals. Luxuriate at a resort for two nights in Tamarindo Beach, known for its breathtaking beauty and fine sandy beaches. Spend two nights in Monteverde’s lush cloud forest. Travel Costa Rica and experience the forest canopy with your choice of a hanging bridges nature walk or an exhilarating zip-lining tour. Explore part of the 20,000 acre nature preserve of Cano Negro on a river boat adventure. Relax in the mineral-rich waters of a hot springs with views of Arenal Volcano. Explore San Jose’s Plaza de Cultura and view the magnificent National Theatre. You will enjoy a slice of paradise and so much more.

For reservations or more information, contact Ann Chan at 810.423.5209 or Diane Roberts at 810.629.4270, ext. 201.

Art à la Carte is a series of informative videos focusing on the arts. It is offered **free of charge** on Wednesdays at 12:15p. Participants are encouraged to bring lunch or pick up something from **The Palette Café**. Coffee, tea, and cookies are provided. All programs are held in the FIA's Isabel Hall unless otherwise noted.



June Art à la Carte Sponsors
The Stella and Frederick
Loeb Charitable Trust

WCMU
PUBLIC MEDIA

*July/August Art à la Carte
Sponsor*
Jim Chintyan

June 6

Joan Mitchell: Portrait of an Abstract Painter

One of the great abstract painters of the 20th century, Joan Mitchell was an active participant in the Abstract Expressionist scene. This program provides a powerful and intimate portrait of the artist. *58 min.*

June 13

Robert Motherwell & The New York School: Storming the Citadel

This documentary profiles American artist Robert Motherwell in the context of Modernism and reviews the last 50 years of his creative life. *55 min.*

June 20

Hans Hofmann: Artist/Teacher, Teacher/Artist

A first-generation Abstract Expressionist, Hans Hofmann never intended to teach, but necessity forced him to and he became extremely influential. This documentary is both an explanation of modern art and the story of an artist and teacher of thousands, some of whom are today's leading artists. *56 min.*

June 27

Robert Indiana: American Dreamer

Robert Indiana came to prominence in the 1960s during the heyday of the Pop Art movement in New York City. This portrait is a visual autobiography in the artist's own words and images. *57 min.*

July 11

Chuck Close: A Portrait in Progress

Since 1969, when Chuck Close first exhibited his series of black-and-white portrait heads, his paintings have fascinated the public. Working mostly from instant photographs, Close paints in a style that vacillates between representation and abstraction. *57 min.*

July 18

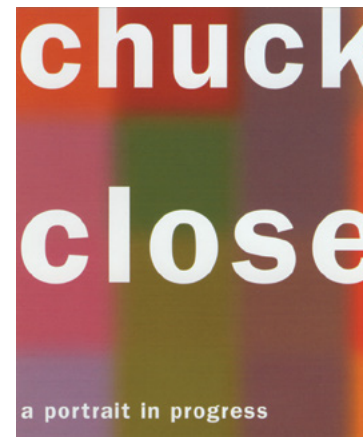
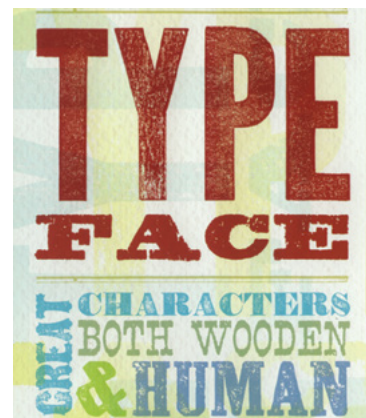
Sign Painters

At a time when most American cityscapes are dominated by computer created signage, *Sign Painters* takes a close look at the past, present, and hopeful future of the hand-painted sign industry. *81 min.*

July 25

Typeface: Great Characters Both Wooden & Human

At the Hamilton Wood Type Museum, a lone employee waits for visitors that rarely come—until one Friday, every month, when the museum comes to life. *81 min.*



August 1

More Human Than Human

The search for, and obsession with, the body-beautiful. Why do we crave images of the body that are so unrealistic? *58 min.*

August 8

The Day Pictures Were Born

When did humans first begin to create images and understand what they mean? *58 min.*

August 15

The Art of Persuasion

The political power of art was discovered in the ancient world. Just how did imagery come to be used as a political tool? *58 min.*

August 22

Once Upon a Time

The first action hero entertained audiences thousands of years ago. How did ancient storytellers discover the techniques that led to today's movie blockbusters? *58 min.*

August 29

To Death & Back

Humans are afraid to die. How has this fear driven humankind to create some of the most powerful images in the world? *58 min.*

FAMILY PROGRAM

Family programs enable adults and children to explore the visual arts at the FIA. They are designed for children and accompanying caregivers, and are offered **free of charge**. Groups of six or more, please contact the Education department to make a reservation.

Baby Tours

June 21, July 18 & August 14 • 3:00p

Experience how your child responds to art and find out how to help develop visual literacy skills. Parents and caregivers with infants up to 18 months of age are welcome to join these FREE 30-minute Baby Tours.



For additional information on Education programming, contact the Education Department at 810.237.7314 or education@flintarts.org.

VISITING ARTIST

Painterly Portraits in Pastel Workshop

September 11-13

9:30a-4:30p

Studio 14

Tuition
\$400 members,
\$480 non-members



Alain J. Picard

Learn how to light, pose, sketch, and photograph the subject, and work from studies and photographic reference materials to create life-like painterly portraits in pastel. Following demonstrations, students will sketch from a live model, creating exploratory studies, compositional approaches, and color notes. We will cover effective techniques for refining the portrait and end with constructive critique. Leave feeling empowered with the working knowledge to create painterly portraits from photographs.

Alain J. Picard is an award-winning artist, instructor, author, and speaker. His acclaimed pastel and oil paintings have been exhibited throughout the U.S., Europe, China and the UK. Alain's work and writing have been featured in *The Artist's Magazine*, *The Pastel Journal*, and *Practique des Arts*. Picard has written three instructional books, including *Mastering Pastel* and *Beginning Drawing*, and stars in a growing collection of instructional art videos. He has lectured and demonstrated for The Metropolitan Museum of Art, the National Arts Club in New York City, Vose Galleries in Boston, MA, the IAPS Convention in Albuquerque, NM, and the Biennial International Pastel Art Exhibition at Ming Gallery in Suzhou, China.

Alain J. Picard, Visiting Artist



ACTIVITY & PROGRAM

Youth Membership Activity

June 23

1:00p-3:00p

Studio 11

In the sweet-smelling grass on a warm summer night, tiny flashes of light fill the air... fireflies are everywhere. It's a magical experience to prolong the light show by collecting these tiny torches in mason jars. Developing drawing and watercolor skills, youth members will create a glowing jar of fireflies, and perhaps, remember a warm summer night! Youth members should plan on staying for the entire two-hour project. Parents are encouraged to visit the galleries or see a glass-blowing demonstration in our new Hot Shop while waiting. **Free to youth members.**



Wet Paint Day

August 4

10:00a-3:00p

Plein Air Painting at
Applewood Estate

5:00p-7:00p

Reception & Wet
Paint Sale at FIA Art
School

Enjoy the beautiful setting of Applewood, the Charles Stewart Mott Estate, while artists from across the state paint en plein air. Meet the artists and watch them paint while they create works of art based on the blooming gardens and historic buildings of Applewood Estate. While on site, enjoy live music, family friendly activities, and free guided house, and garden tours – no reservation required. **The event is free and open to the public.**



DEMONSTRATIONS

McLaren Free Glassblowing
Demonstration Days

Join us in the Hot Shop every Saturday to see the Art School's professional glass artists gather molten glass from our 2,100 degree furnace and manipulate the glowing material into elegant forms and vessels. Learn about the techniques used to create many of the works shown in the FIA's new Contemporary Craft Galleries. Thirty minute demonstrations are held every hour on the hour, 11:00a-4:00p.



Thanks to
McLaren
HEALTH CARE

WORKSHOP

Basics of
Glass Cane

Expand your flameworking skills by learning to make fancy, colorful soft glass canes. You will be introduced to a variety of cane pulling processes and techniques, focusing on even, consistent pulls. Demonstrations will include making encased stringer, striped cane, flat "ribbon" cane and more complex canes, and the application of these canes.

Kim Fields

7/27 (F) 10a-6p Studio 15

Tuition: \$120 (members 20% off)



One-Week Teen Workshops

Puppets, Places, and Performance

Award-winning visual theater artists, Concrete Temple Theatre, will lead students in a workshop that combines painting, sculpture, puppetry, storytelling, and performance. The course will culminate in an original evening outdoor performance during downtown Flint's August Artwalk.

Concrete Temple Theatre is an award-winning, multi-disciplinary company that emphasizes the creation of compelling new theatre works, incorporating drama, dance, puppetry, and the visual arts, which focus on the individual's struggle for identity and society's struggle for cohesion.

Matthew Osmon with Guest Artists from Concrete Temple Theatre, NYC
8/6-8/10 (M-F) 10a-4p Downtown
Tuition: \$270* (\$185 current PDP students)



Jesse Mooney-Bullock

Color Portrait Drawing

Working from live model and photo references, students will focus on a realistic approach to portrait drawing, while experimenting with limited and full color palettes using conté crayons and pastels.

Alla Dubrovich
8/13-8/17 (M-F) 2:30p-5:30p Downtown
Tuition: \$135*

All-Intensive Art Week

Immerse yourself in a week of making art by drawing, painting, constructing sculpture and printmaking! Projects allow students to explore ideas and experiment with different mediums while looking at contemporary art and art movements. Working from still-life and a model, students will strengthen their observational skills, while additional projects invite students to blend photographic imagery and their imagination to cultivate ideas and communicate content.

Rachel Reynolds Z
7/9-7/13 (M-F) 10a-4p Downtown
Tuition: \$270* (\$185 current PDP students)

2-D Design & Color Theory

Students will be introduced to the fundamentals of two-dimensional design through projects in a variety of media emphasizing the elements of line, shape, space, value, texture, color, and more.

Alla Dubrovich
8/13-8/17 (M-F) 10a-2p Downtown
Tuition: \$185*

Glass Blowing Workshop

Learn the fundamentals of forming molten glass into intentional forms. Students will build a strong understanding of the material and gain the skills necessary to safely navigate the studio to begin making hand blown glass objects. (ages 16-18)

Brent Swanson
8/13-8/17 (M-F) 10a-4p Studio 8
Tuition: \$300* (\$185 current PDP students)



* FIA members receive
20% off of tuition.

Ages 5-9

Everyday Insects

Buzzing, flitting, flying, and crawling, insects are an everyday part of our lives. Young artists will explore five common insects through drawing, painting, clay, wire, and wood.

Rebecca Andrus & Karen Sutherland
7/9-7/13 (M-F) 9a-12p Studio 10
Tuition: \$135*

Art Mystery: Code Name Color

Your mission, if you choose to accept it, is to become a scientist as well as an artist. You will go undercover and enter the mysterious world of the color wheel. Daily experiments, color mixing, and discovering artists who paint with dots, bright colors, and optical art will help you solve our mystery. Case closed.

Rebecca Andrus & Karen Sutherland
7/16-7/20 (M-F) 9a-12p Studio 10
Tuition: \$135*

Art Adventure Blast Off

There's no space like outer space! Get ready to blast off for art adventures. Space explorers will perform experiments, draw, paint, and construct as they visit planets, feel the heat of the sun, and search the stars for other life forms.

Rebecca Andrus & Karen Sutherland
7/23-7/27 (M-F) 9a-12p Studio 10
Tuition: \$135*

In addition to these classes, the Art School offers over 75 classes and workshops in each of its four 11-week sessions.

For more information on Art School programming, contact the Art School at 810.237.7315 or arted@flintarts.org.

The Flint Institute of Arts gratefully acknowledges the generosity of the following donors who have supported the Institute with contributions.



(From Left to Right) FIA Glass Programs Manager Brent Swanson, FIA Art School Director Donovan Entrekin, and FIA Executive Director John Henry stand with FIA Trustee Jimmy King, a Consumers Energy retiree, as they receive a check from Carolyn Bloodworth, Director of Corporate Giving Consumers Energy Foundation, and Kyle McCree, Area Manager Consumers Power.



Becky Foerster, Hagerman Foundation Executive Director (second left) and Christina Mitchell, Administrative Assistant (far right) present Tracee Glab, Curator of Collections and Exhibitions (third left) and Marissa Pierce, Public & Community Relations Coordinator (far left) with a check in support of artist, poet, and performer Vanessa German's visit to Flint during Summer 2018. During her visit, German will conduct art-making workshops with our community in preparation of her exhibition at the FIA in winter 2019.

Gifts received from 1.9.18 - 4.12.18

Annual Appeal Gifts Since 1.9.18 - 4.12.18

Mr. & Mrs. Howard J. Bueche
Ms. Maureen MacVay
Mrs. Mary E. Whaley & Mr. Rick Kroeger

Special Gifts

Gift of an FIA Membership
Mr. & Mrs. Michael J. Behm for Mark Bernstein & Rachel Bendit
Ms. Patricia J. Cleland for Sandy Malnar
Mr. Louis A. Hawkins for Mark & Rebecca Miller
Ms. Susan Khalifah for Jeff & Laura Lin
Mr. H. Michael Parker for Michael, Elizabeth & Addison Peter
Mr. & Mrs. Mark Prescott for Olivia Lyons
Michael & Ivan Rutherford for Mrs. Dana Rutherford

Donation of supplies to the FIA Art School

Mr. & Mrs. Py Hockin
Ms. Lisa Davis

Donation to the Art School Fund

Mr. Ralph Gorton & Ms. Marion Gorton
Mrs. Brenda McVey
Mr. Randle Samuels & Ms. Gail Offen-Samuels
Mr. & Mrs. Mark A. Schwartz

To support General Operating

Mr. & Mrs. Adam Carlson
Mrs. Robert C. Morgan
Donor advised grant from William H. Piper - Flint Community Fund of the Community Foundation of Greater Flint

Grant to support Pre-College Portfolio Development Program 2018/19

Stella & Frederick Loeb Charitable Trust

Grant to support ArtReach Program 2018/19

Stella & Frederick Loeb Charitable Trust

Grant to support Art à la Carte 2018/19

Merkley-Elderly Charitable Trust

Sponsor of Art à la Carte 2018 Summer Program

Mr. James R. Chintyan

Donation to support the exhibition Ubuhe Women: Beadwork and the Art of Independence
Delta Sigma Theta Sorority, Inc.

Donation to support Friends of Modern Art

Mrs. Brenda McVey

Donation to support the Vanessa German exhibition 2019

The Hagerman Foundation

Expansion Project Endowment and Equipment Funds Contributors Since 1.9.18 - 4.12.18

Frederick & Barbara Bellairs
Mr. Christopher Carr
Chan Family
Consumers Energy Foundation
Ms. Nora G. Fisher
Mrs. James Hastings
Mr. & Mrs. Gary J. Hurand, with thanks to Kathryn Sharbaugh for giving a tour
Ms. Kerstin Lawrence
Donor advised grant from William H. Piper - Flint Community Fund of the Community Foundation of Greater Flint
Dr. & Mrs. Paul E. Schroeder
Mr. Charles Tobias
Dr. D.J. Trela & Dr. David Bailey
Dr. & Mrs. Frederick VanDuyne
Whiting Foundation

Event Sponsors Since 1.9.18 - 4.12.18

Community Gala 2018
Flint District Library, Programming Partner

Lego Competition 2018

Barnes & Noble
Flint Area School Employees Credit Union
Dr. David Taylor & Dr. Shawn Reiser

The PARTY 2018

ABC12
Al Serra Auto Plaza (The Serra Foundation)
All-Weather Seal Co., Inc.
American Machining, Inc.
Artistic Decorating
Attorney Matthew L. Norwood
Big Top Tattoo/Signature Tattoo
Bishop International Airport
Bodman PLC
Mrs. Edmund Brownell
Cline, Cline & Griffin, P.C.
Consumers Energy
Corner Bar
D.W. Lurvey Construction
Dr. Kiran & Laxmi Devisetty
Diplomat
Dr. Zouheir & Nina Fares
Ed Fletcher
Flint & Genesee Chamber of Commerce
Joanne & Bob Fuller
FUNchitecture, LLC

Great Lakes Family Dental Group
Hank Graff Chevrolet
Hurand Family
Hurley Foundation
Jennifer Lasco Real Estate
Janna Jones
Kentwood Office Furniture
Michael & Manisha Kia
Mrs. Prasad & Jayashree Kommareddi
James & Harriet Lay
John & Nicole MacDonald
Mass Transportation Authority
Maxim Roofing
McLaren Flint
Mrs. Bobby & Nita Mukkamala
Dr. & Mrs. Kienan F. Murphy
Jay & Marilyn Nelson
Olivia Maynard & Olof Karlstrom
Olmsted Associates, Inc.
Suellen J. Parker, PLLC + Case Island Glass
Rama D. Rao, MD
ROWE Professional Services Co.
Ann & Khalil Saab
Scott B. Karlene, M.D., & Kevin J. Gaffney, M.D. Dermatology
Servpro of Fenton & NW Genesee County
Shultz Automation
Shawn Reiser, DPM, David Taylor, DPM, Dean Singer, DPM

Sheila R. Smith
Sorensen Gross Co.
Stephens Wealth Management Co.
The Karwaski Group at Morgan Stanley
The Torch Bar & Grill
University of Michigan-Flint

The PARTY 2018, In-kind
Gerych's
Neiman Marcus
Redwood Steakhouse
Spartan Printing
Weinstein Electric

Sponsor of the VIP Reception for the April 2018 Grand Opening
Mass Transportation Authority

Wine Tasting 2018
Ameriprise Financial
Attorney Matthew Norwood
Behm & Behm
Bennett Communication Solutions
Community Podiatry Group
Core Financial Group
Craig Ryan Fine Menswear
David Kelly & Guy Moxam, Raymond James & Associates
Dort Federal Credit Union
Flint Cultural Center Corporation
Flushing Vision Source - Dr. Mike Wallace
FUNchitecture
Drew & Cathy Gentry
Chene Koppitz

Kevin & Robyn LaFay
Landaal Packaging
Mark & Pam LaVasseur
Lisa M. Smith - Rodan & Fields
Mike Foskett Plumbing
Bill & Kitty Moeller
Joanne G. Mondowney
Olmsted Associates, Inc.
Plante Moran
Roy, Noye & Warren, CPA, P.C.
Simms Chevrolet
Snider Financial
Leo & Elizabeth Solano
Jim & Patt Spangler
Paul & Susan Stravato
The Damouni Family / Tim Horton's
The Green Group at Morgan Stanley
The Torch Bar & Grill
TLC PEDIATRICS, Dr. Sarah Sanchez & Dr. Cynthia Horning
Werschky & Lewis Family Dentistry
Dr. & Mrs. Curtis Yapchai

Film Society Members 17/18

Since 1.9.18 - 4.12.18

Mr. Albert Comins
Mr. & Mrs. Eric Ethington
Merrill Lynch
Ms. Linda L. Pylpiw

In Honor

In honor of Bill & Kitty Moeller's 60th Anniversary
Mr. & Mrs. Thomas G. Sawyer
Dr. & Mrs. Paul E. Schroeder

In Memory

In memory of Thomas Calhoun to support the Thomas W. Calhoun Scholarship Fund
Ms. Martha Calhoun
Mr. A. Paul Zeitzew

In memory of Suzi Davidek
Ms. Cheryl Christoff

In memory of Edith Gutow
Mr. & Mrs. John B. Henry
Susan Robinson Levy
Chuck & Kathryn Sharbaugh

In memory of Virginia Landaal
Mr. & Mrs. Mark L. Lippincott

In memory of Judy & Bob Piper
Mr. & Mrs. Charles B. Piper

In memory of Grayce Scholt
Mr. & Mrs. John B. Henry
Chuck & Kathryn Sharbaugh

In memory of Barbara J. White to support Collections, Endowment, FIA Library, and Founders Society
Mr. Howard D. Abrams
Liz Alters
Ms. Mara Altman
Anonymous
Mr. & Mrs. Richard Aubrey II

Ms. Katie Cariffe & Mr. Jonathan Rosen
Juju Chang & Neal Shapiro
Mr. & Mrs. William Chittle
Mr. John V. Dempsey & Ms. Margo Lakin
Chris Donovan
Ms. Jilian Fama
Noodie & KG (Nicole Francis)
Mr. & Mrs. Drew Guff
Ms. Melody Hobson
Ms. Michelle Hord
Mr. Joseph Hughes
Mr. & Mrs. William Laufer
Al Leibman
Blair Ligelis
Mr. & Mrs. Joe Majors
Ms. Phyllis McGrady
Ms. Melissa Menta
Ms. Tracy D. Morgan
Mr. & Mrs. David Norris
Mr. Harley Pasternak
Ms. Cybele Policastro

Dr. & Mrs. Gerald Schneberger
Mr. Thomas W. Shepherd
Mr. & Mrs. Justin Soffer
Ms. Meehan Truelove
Mr. & Mrs. Donald Vanitvelt
Ms. Rebecca Worley

Print Club Members 17/18

Since 1.9.18 - 4.12.18

Mr. Mark Bernstein & Ms. Rachel Bendit
Ms. Kathleen George
Ms. Patricia Johns
Mr. & Mrs. Adam Reigle
Mr. & Mrs. Vincent Zamora

Gift of Print Club 17/18

Mr. & Mrs. Michael J. Behm for Mark Bernstein & Rachel Bendit



Adam Haffajee and Jennifer Lasco of Jennifer Lasco Real Estate present a check to FIA Development Director Kathryn Sharbaugh. Jennifer Lasco Real Estate is the 2018 presenting sponsor for The PARTY.



Jim Chintyan, summer sponsor of Art à la Carte, enjoys a visit with friends in The Palette Café following a recent edition of the Wednesday program.

Membership contributions are a significant part of the FIA operating income.

Benefits and privileges of FIA membership include 10% discount in the Museum Shop and The Palette Café; a 20% discount and early registration privileges on Art School classes; discounts on ticketed events; free admission to exhibitions; invitations to opening receptions, lectures, and special events; FIA Magazine subscription; recognition in the FIA Magazine and Annual Report and inclusion in two reciprocal membership programs for members at the \$100 level and above.

Rubens Society Members are individuals and businesses supporting FIA membership at the \$1,000 level and higher and are invited to three exclusive events each year.

Levels

Youth (2.5-12).....	\$20	† 2 adults
Student (13 to college)....	\$20	†† 2 adults + children 18 & under
Individual	\$30	
Dual	\$40	
Family ††.....	\$50	* An asterisk indicates the names of those who have upgraded their memberships with a larger contribution.
Sustainer ††.....	\$100	
Sponsor ††.....	\$250	
Donor ††.....	\$500	+ A plus indicates the names of Friends of Modern Art (FOMA) members.
Rubens Society ††.....	\$1,000+	Δ A triangle indicates the names of Founders Society members.

Members who have renewed from 1.9.18 - 4.12.18

Rubens Society

Business

(\$1,000 & above annually)
Abbott's Meat Inc.
Big John Steak & Onion, Inc.
Fabiano Brothers, Inc.
Sorensen Gross Construction Co.

Individual

(\$1,000 & above annually)
Ms. Sandra Applegate+Δ
Mr. & Mrs. Richard P. BaksΔ
Frederick & Barbara Bellairs
Mrs. Edmund Brownell+Δ
Ms. Wanda Eichler*
Mr. & Mrs. Harry L. Eiferle, Jr.+
Mr. & Mrs. Michael A. Farella*
Mr. Ed Fletcher+Δ
Hank & Bonnie GraffΔ
Donna Mooney Graham
Mr. & Mrs. James N. Johnson
Mrs. Nancy Kleinpell+Δ
Mr. & Mrs. Stephen S. Landaal
Prosecutor David & Therese Leyton
Mr. & Mrs. David S. McCredie+Δ
Mrs. Robert C. Morgan
Mr. William H. Piper
Ms. Linda L. Pylypiw+
Mr. & Mrs. Timothy C. Sanford+Δ
Dr. & Mrs. Paul E. Schroeder+
Mr. & Mrs. James Spangler
Dr. D.J. Trela & Dr. David Bailey
Mr. William S. White & Mrs. Louise Hartwell+Δ

Business Members

Business Supporter

(\$250 annually)
Cracker Barrel Old Country Store, Inc.
Hamilton Community Health Network

Business Sustainer

(\$100 annually)
Diplomat Specialty Pharmacy
Flint Cultural Center Foundation
McFarlan Home
Vogt's Flowers

Individual Members

Donor

(\$500 annually)
Mr. & Mrs. Kelly B. Beardslee+Δ
Ms. Elizabeth Bishop*
Mr. & Mrs. Michael Bourke*
Ingrid G. Halling & Robert Thomas+
Mr. & Mrs. William Peterson
Mr. & Mrs. David RoeserΔ

Sponsor

(\$250 annually)
Mrs. Rosemary R. DeCamp
Mr. & Mrs. John H. Lang+Δ
Mr. & Mrs. James LayΔ
Mr. William B. Neis

Mr. Mark E. Neithercut
Mr. & Mrs. Carl A. Pohly+Δ
Mr. Gary Reetz & Mrs. Barb Stone Reetz+Δ
Dr. & Mrs. Thomas Svitkovich
Mr. & Mrs. Erik Warren
Mr. & Mrs. Larry Weber

Sustainer

(\$100 annually)
Mr. & Mrs. William R. Angus+Δ
Mrs. Mary Beth Atkinson+Δ
Mr. & Mrs. Steven & Valarie Bailie
Mr. Reid Baxter & Mrs. Diane Baxter
Mr. & Mrs. Fred Bearman+Δ
Dr. & Mrs. William D. Beck & Kristen
Ronald & Lucille Bigelow+Δ
Mrs. Evelyn Nida Blanford+
Dr. Patrick Botz+Δ
Mr. & Mrs. Joseph Burroughs+
Mr. & Mrs. Tom E. Butts+
Ms. Deborah Cherry+Δ
Ms. Melba R. Clapp+
Ms. Betty J. Clark+Δ
Ms. Carol L. Cook*
Mr. & Mrs. Thomas Cooper
Ms. Anna Cox & Ms. Deb Cox
Mr. & Mrs. George Cross
Mrs. Judith L. Davidson
Mr. James A. Davis & Ms. Carol M. Fabrizio+
Ms. Dorothy Gae Davis
Dr. Quincy Dobbs
Mr. Ryan M. Eashoo+Δ
Mr. & Mrs. Daniel Filipovich+Δ
Miss Denise D. Fish+
Mr. & Mrs. Ed Fizell+
Dr. & Mrs. Melvin Flamenbaum+Δ
Ms. Patricia Gage+Δ
Mr. Thomas M. Gervasi+Δ
Mr. & Mrs. Elie Ghattas
Mr. & Mrs. Christopher Giroux
Mrs. Roberta L. Goergen
Mrs. Bobbie J. Greer
Dr. & Mrs. Robert HahnΔ
Mr. & Mrs. Basil HartΔ
Ms. Karolatta Heath+Δ
Mr. & Mrs. Claude High & Family*
Mr. & Mrs. Py Hockin
Mrs. Martha B. Hopkins
Ms. Judith I. Ingram & Ms. Maire IngramΔ
Mr. William G. Jacoby & Ms. Saundra K. Schneider
Mr. & Mrs. Earl D. Johnson
Mr. Derrick F. Jones+
Mr. & Mrs. Dennis Keeney
Mr. & Mrs. Robert Kilbourn
Ms. Kathryn Kohout+Δ
Mrs. Marilyn Kopp & Ms. Johnnie KaberleΔ
Mrs. Mary E. Kramer & Mr. Ian Young*
Mr. & Mrs. Tim Kroll & Family*+
Ms. Sandra Kusza
Dr. & Mrs. Paul Lafia
Mr. & Mrs. Carl A. Leser+Δ
Mr. & Mrs. Thomas B. Lillie+Δ

Mr. & Mrs. Jeff Lin
Mr. & Mrs. Glenn Lysinger
Mr. & Mrs. John Mair III
Ms. Doris Malfese
Ms. Carol Masse+
Dr. & Mrs. Jack McGaughΔ
Mr. & Mrs. John J. McIntosh
Ms. Kareyna Miller+Δ
Mr. & Mrs. Edward A. Mitchell
Mrs. Doris A. Moellering+
Ms. Kerry Moore
Mr. & Mrs. Guy K. Moxam
Ms. Alice R. Murphy
Mr. & Mrs. Alexander C. Murray+Δ
Mr. & Mrs. John Nieman
Mrs. Janice G. Pike+Δ
Dr. & Mrs. George D. Politis+Δ
Dr. Jacquelyn Reinertson+Δ
Mr. & Mrs. Ronald E. Royer
Mr. Randle Samuels & Ms. Gail Offen-Samuels+Δ
Mrs. Miriam S. Schaffer
Kenneth & Phyllis Schilling+
Mr. & Mrs. Edwin Schreiber
Mr. & Mrs. Mark A. Schwartz+Δ
Mr. David Simonds
Mr. & Mrs. Eric Smith
Ms. Sandra K. Smith+Δ
Mr. & Mrs. Fred Standridge
Shirley A. Stevens & Bob Tressedder
Mr. Michael Dingman & Mrs. Susan Sumner Dingman+Δ
Mr. Ted Van Steyn & Dr. Emily Feuerherm
Mr. & Mrs. Robert J. VanDuyneΔ
Ms. Jane C. Wagner
Mr. & Mrs. William Walker*
Ms. Carolyn Warren
Ms. Joanne White*+Δ
Dr. & Mrs. James Williams+
Mr. & Mrs. Mike Wilson+Δ
Jerome & Judith Wolbert
Mr. & Mrs. Vincent Zamora+
Mr. & Mrs. Marvin Zmudczynski
Mr. Stephen Zulinski+Δ
Dr. & Mrs. George Zureikat

Family

(\$50 annually)
Ms. Velma Adams+
Mrs. Karen Alexander
Mr. & Mrs. Ricardo Alfaro
Ms. Roseanne Bagale*
Mr. & Mrs. David S. Boze & Molly
Mr. & Mrs. Paul Britz
Mr. George Brueck & Ms. Barbara Brownlee
Ms. Connie Burgess & Miss Katie Burgess
Mr. & Mrs. Daniel Cady+
Mr. & Mrs. James Cheek
Mr. Ray & Marvenia Diem
Mr. & Mrs. Mark Farella
Mr. Richard W. Fortner+Δ
Ms. Lynn Friesen-Davis
Ms. Pamela Goodwin
Mr. & Mrs. Robert F. Granville*+
Mrs. Holly Grzyb
Mr. John M. Hackett & Ms. Christy A. Walker-Hackett+
Mr. & Mrs. Carlos Hernandez

Mr. & Mrs. James Hotary
Mr. & Mrs. Robert Houbeck
Mr. & Mrs. Clifford Hughes
Mr. & Mrs. James Jarvis
Mrs. Tracy A. Jennings
Ms. Patricia Johns*
Mr. & Mrs. Russell Kirksey
Mrs. Melissa Leaym- Fernandez
Ms. E. Yvonne Lewis & Ms. Tanya Lewis*
Mr. & Mrs. Mark Miller*
Mr. & Mrs. David Mulligan
Mrs. Linda Murphy
Mr. & Mrs. Christopher Music
Jonathan Nigrine & Kelly Nigrine
Mr. & Mrs. Matthew Osmon*
Ms. Elizabeth Parks
Ms. Judith Perez
Mr. & Mrs. Dudley Place+
Mr. & Mrs. Mark Prescott*+Δ
Dr. Paul J. Racine
Mr. & Mrs. Adam Reigle
Mrs. Martina Robb
Mr. & Mrs. Nicholas Robinson
Mr. & Mrs. Barry Rosen*
Mrs. Judy Sanford
Ms. Cherlyn Satkowiak
Ms. Martha Shaver
Mr. & Mrs. James Shurter*+
Mr. Scott Siefker
Dr. & Mrs. Morton Stanley
Mr. & Mrs. David Stichel
Mr. & Mrs. John Straw
Mr. & Mrs. Jon Talarico*
Mr. & Mrs. Bruce Trevithick+Δ
Mr. & Mrs. Zach Warby
Mr. & Mrs. Chris Wise
Dr. Michael Witt*+
Ms. Kala Wood & Ms. Penny Peterson

Dual

(\$40 annually)
Ms. Carol Andrews-Goyt & Mr. Terry R. Goyt
Dr. Aderemi Artis & Ms. Rachel Stock*
Mr. Kevin Avery & Mrs. Angela Brooks-Avery
Mr. & Mrs. Richard Beauchamp+
Mr. & Mrs. Martin Bernstein
Mr. Michael Borrer & Ms. Vicki Doherty*
Dr. & Mrs. Donald Brockriede
Dr. Loretta Brown & Mr. Robert Brown
Mr. & Mrs. Willie Bruce+
Mr. & Mrs. Michael Burkley+
Mrs. Beverly Calkins & Mr. Charlie Calkins*
Mrs. Diana Carr
Mr. & Mrs. Gerald Carto
Mr. Wade Carver & Ms. Heather Meier+
Mr. & Mrs. John M. Christena
Ms. Laurie Dexter & Ms. Patricia WilsonΔ
Father Paul J. Donnelly
Mr. & Mrs. Jim Edwards
Ms. Kathleen Etherly & Mr. Cosmas Eaglin
Mr. & Mrs. Joseph A. Eufinger
Mrs. Robin Evans+

Mr. & Mrs. George Francis
Mr. Ralph Gorton & Ms. Marion GortonΔ
Mark & Rebecca Hanner
Mrs. Wanda Harden
Mr. & Mrs. Robert Henshaw
Ms. Shayna Hosler & Mr. James Mason+
Mr. Jeff House & Mr. Jonathan Shettler
Ms. Jennifer Howard & Ms. Sheila Smith*
Mr. Gail Hurst & Ms. Ruth Hurst
Mr. & Mrs. David Johnson
Mrs. Suzanne Johnson*
Mrs. & Mr. Mary Alice Jones
Mr. & Mrs. Kenneth Jordan
Ms. Tasia Kalemis
Mr. James Kelly & Mrs. Mary Kay Thompson-Kelly+
Mrs. Camille Koger-McCree & Mr. Kyle McCree
Mr. & Mrs. Rudolph N. Kohn
Mr. & Mrs. Gary Kuiper+
Mr. & Mrs. Shannon Langley
Ms. Andrea LeGendre & Mr. Joseph Farah*
Mr. & Mrs. James A. Loviscek
Ms. Giovannina MaioΔ
Mr. & Mrs. Charles Martin+
Ms. Pamela McBride
Mr. & Mrs. James McDougal
Mr. & Mrs. Peter McKenna
Mr. & Mrs. Neil McPheeΔ
Ms. Pennie A. Meyers+
Mr. & Mrs. Kenneth Miloto+
Mr. & Mrs. Ken Nemitz
Dr. & Mrs. Jack Nettleton+
Mr. & Mrs. Ronald Oskey
Ms. Connie Parker
Mr. Douglas Petroni & Ms. Rosalie Buss-Petroni+
Ms. Ann Rasmussen & Ms. Wilma Tremblay
Mr. & Mrs. Melvyn R. Rettenmund
Mr. & Mrs. Richard Rogers+
Ms. Kathleen A. Sheehy*
Mr. Ken Swisher
Ms. Jeanne C. Thick & Mr. John Nelson
Mr. & Mrs. Daniel Tipton+
Mr. Russ Turner & Ms. Tivoli Fountain
Mr. & Mrs. Robert Vale+
Mr. & Mrs. Jon Wheeler*+
Mr. & Mrs. William WhiteΔ
Ms. Kimberly Wilcox*Δ

Individual

(\$30 annually)
Mr. Bill Anderson*
Mrs. Barbara Asa
Mr. Chris Balog+
Ms. Shirley Bannatyne
Ms. Sandra Becoats*
Ms. Celestia Bell
Mrs. Elizabeth A. Bickford+
Mrs. Rosemary Bigelow
Ms. Eileen Booker
Mrs. Carole A. BrenderΔ
Ms. Nancy Brooks-Siebert
Ms. Joy Bublitz+
Ms. Sandra Burbas
Mrs. Patricia Burk
Mrs. Patricia A. Chipman+
Ms. Tracy Collier-Nix
Mrs. Rhonda Coulter
Ms. Amy A. Cox+
Miss Vera L. Crandall
Dr. Ronald Crow
Mr. Ray Davio
Ms. Patricia S. Duffy
Ms. Kathleen Duval+Δ
Ms. Karen Edwards
Ms. Gisele Farah
Ms. Delphine Frank
Ms. Delphine Frank
Mr. Matt Franklin
Mr. William D. Fuller+Δ
Mr. Donald Grignani
Ms. Carole Gutteridge
Ms. Alfreda A. Harris+Δ
Mrs. Danielle Hawkins
Mrs. Harriett Hess
Ms. Donna Hewitt
Ms. Carol Higgins
Ms. Donna Hines
Mrs. Lois D. Hodges+
Mrs. Sandra Holloway
Ms. Helen R. Hoyt+Δ
Ms. Marta Mary Ingram Fakhoury
Mr. Robert J. Irwin
Miss Esther M. Jacob+Δ
Ms. Mary JacobsΔ
Ms. Stephanie James*
Ms. Susan KellyΔ
Mr. A.P. Kennedy+Δ
Miss Sheryl Kreiner
Mrs. Michelle Lankton
Ms. Dorothy Latchana
Ms. Marie Lauer
Mrs. Suzanne LewisΔ
Ms. Diane Lien+
Ms. Marcia Luther+
Ms. Sandy Malnar+
Dr. Pamela Marin
Mrs. Mary Markel
Ms. Marjorie Markon+
Ms. Lucille M. Martel+Δ
Ms. Marcia K. Mathews
Ms. Kim McKerracher
Mr. Gary L. Messenger+Δ
Ms. Sky Mikinak
Mrs. Patricia Minshall
Ms. Barbara Mirsky
Ms. Sandra Moore
Ms. Dee Moreno
Ms. Marlene Morris+
Ms. Diane Murphy
Ms. Kelly Myers
Mrs. Glenda Naffziger-Kniss
Ms. Natalie Napier
Ms. Marna Newman*
Ms. Nancy Olds
Ms. Jolene Padgett
Ms. Cherie Palmer
Ms. Alta Parsons*
Mr. Will Petteys
Ms. Edith A. Robbins+
Ms. Deborah Robertson
Mrs. Patti L. Rowe
Mrs. Elizabeth Rowse
Ms. Linda Russell
Mrs. Dana Rutherford
Mrs. Katherine Saunders
Mrs. Margrit Schlatter+

Mrs. Sheila A. Schweinsberg+
 Mrs. Patricia Shepard
 Mrs. Barb Soloko
 Ms. Sandra Struble
 Ms. Virginia Sullivan
 Mrs. Olga Swarthout
 Mr. David Tait
 Mr. Mick Thompson
 Ms. Jane B. Trotter
 Ms. Amy Troyer
 Ms. LeAnn Underhill
 Ms. Jolyn Vita
 Mr. Mark Wagner
 Mrs. Judith A. Walker
 Mr. Richard L. Wilson
 Mr. Dale F. Wolfgram+
 Mrs. Margie Murray Wright
 Ms. Dianne E. Wright
 Ms. Darla S. Wynn+
 Mrs. Barbara A. Young
 Mr. J. Michael Zelly

Student

(\$20 annually)
 Ms. Audrey E. Dismond*+Δ
 Miss Ashley Jordan-Arizona
 Hense
 Ms. Mary Stoinski
 Miss Lily Thompson

Youth

(\$20 annually)
 Ezra Amaya
 Joaquin Amaya
 Avery Bates-Kirby
 Olivia Lyons
 Mackenzie Naffziger

Members who have joined from 1.9.18 - 4.12.18

Business Members

Business Supporter
 (\$250 annually)
 Ace-Saginaw Paving Co.

Business Supporter
 (\$100 annually)
 Al Serra Auto Plaza
 Baker College Center for Graduate Studies
 Community Foundation of Greater Flint
 Genesys Ascension
 Mott Community College Workforce Development
 PNC Foundation

Individual Members

Sponsor
 (\$250 annually)
 Mr. & Mrs. Douglas Finch
 Mrs. Elizabeth Kelly & Mr. Jeremy Hall

Sustainer
 (\$100 annually)
 Mr. & Mrs. Terrell AubertΔ
 Mr. Adam Conley
 Mr. & Mrs. Chad Cramer
 Mr. & Mrs. William Groth
 Mr. David Meyer & Dr. Julie Meyer+Δ
 Mr. & Mrs. Jim Reigle
 Ms. Elizabeth Svoboda

Family
 (\$50 annually)
 Mrs. Shawna Bell
 Mr. Mark Bernstein & Ms. Rachel Bendit
 Ms. Denise Davidek & Mr. Brian Liljebblad+
 Mr. & Mrs. Jeffrey Davis
 Mrs. Sandi Gillard
 Mrs. Judith HenleyΔ
 Ms. Michelle Henry & Mr. Eric Walters
 Mr. Craig Holland & Mrs. Sarah Robbins
 Mr. Craig Jakeway
 Ms. Lisa Kiessling
 Mrs. Jade Kindermann
 Mr. Daniel Mashike
 Ms. Jennifer Mason
 Mrs. Anita Mathews & Ms. Jessyca Mathews
 Ms. Sarah Mulholland
 Ms. Gina Olivo
 Bermicia Parks
 Mr. & Mrs. Michael Peter
 Ms. Kelly Rosencrants
 Dr. Jessica Wolin & Mr. Frank Crownover

Dual
 (\$40 annually)
 Mr. Fred Blackwood
 Ms. Morgan Boyer & Mr. Michael Vizard+

Ms. Jewel Boykin & Ms. Earline Coleman
 Mrs. Trudy Brewer
 Ms. Cindy Carney
 Ms. Theresa Fernandes
 Mr. & Mrs. James Fink
 Mr. & Mrs. Steven Glass+
 Ms. Angela Green-Izzo & Mr. Walter Soon
 Mr. & Mrs. David Harmon
 Ms. Lana Krolikowski
 Mr. Richard J. Martin
 Mrs. Taylor Martinez
 Miss Mia D. McNeil
 Mr. Joseph Palazeti
 Mr. & Mrs. Alvin Sanders
 Ms. Lily Sawvel
 Ms. Jo Shouse & Mr. Pat Hancock+Δ
 Mr. & Mrs. Rohn Smith
 Pastor Kevin Thompson & Ms. Deadrea Smith
 Mr. & Mrs. Steven VanTol
 Mr. Duane Venner
 Ms. Natalie Wilson & Mr. Brian Ferriby

Individual
 (\$30 annually)
 Ms. Hilary Anderson
 Ms. Annette Baron
 Ms. Vera Bean
 Ms. Jennifer Betts
 Ms. Mary K. Bickley
 Ms. Diane Brady
 Ms. Gale M. Brooks
 Ms. Joyce Colaluca
 Mrs. Debra M. DankoΔ
 Ms. Julie Dorcey+Δ
 Ms. Lori Downs
 Ms. Wanda Dziura
 Mr. William Falkenberg
 Ms. Sara Ferris
 Ms. Cathy FettersΔ
 Mr. Bruce Ford
 Mr. Mike Grohoski
 Ms. Mary C. Haering
 Ms. Jan Herrick
 Mrs. Irene Howlett
 Mr. William Hughey, Jr.+Δ
 Ms. Teresa Hunter
 Ms. Dianne J. Johnson
 Ms. Linda M. Johnson+
 Ms. Stephanie Johnson
 Ms. Coralie Katopodis
 Mrs. Pamela Kenny
 Miss Madeline Kominar+
 Ms. Margaret Kramer
 Ms. Louana Lawrence
 Mr. Greg LeMieux
 Ms. Pamela Loving-Copeland
 Mrs. Brenda McVey+Δ
 Mrs. Jeanne Moss
 Mrs. Loretta Neville
 Ms. Kim Ott-Gray
 Ms. Mary Price
 Mrs. Lori Rivette
 Ms. Marta Schonfeld
 Mrs. Andrea Shuart+
 Ms. Susan Sowa+
 Ms. Stella Spicer
 Mr. James Stolpin
 Mrs. Carol Upton
 Mrs. Julie Van Cura

Ms. Carol Walker
 Ms. Patricia Wombwell

Student
 (\$20 annually)
 Miss Sarai Benjamin
 Ms. Kiley Brown
 Miss Arianna Bruce
 Ms. Lauren Novock

Youth
 (\$20 annually)
 Nala Ar-Rahmaan
 Justin Banks
 Elise Jenkins
 Lauren Lavoie
 Kal Lawrence
 Addison Maxwell
 Morgan McKimmy
 Evelyn Myers
 Reed Ross
 Keira Stimson

 <p>Sunflower Wallet \$12</p>	 <p>Sunflower Socks \$8</p>
<h1>Van Gogh inspired</h1>	
 <p>Sunflower Jewelry \$9-\$18</p>	 <p>Sunflower Puzzle \$22</p>
 <p>Sunflower Mints \$7.50</p>	<p>Don't forget: The Museum Shop's annual Art Fair Clearance Sale is June 9-10.</p> <p>Through August 12, remember to pick up catalogues and other items related to <i>From Lens to Eye to Hand: Photorealism 1969 to Today</i>.</p> <p>Members always receive a 10% discount on Museum Shop purchases.</p>
 <h2>MUSEUM SHOP</h2> <p>Mon-Sat, 10a-5p*; Sun, 1p-5p <i>*The Museum Shop is open extended hours for select special events.</i></p>	



FLINT INSTITUTE OF ARTS

1120 E. Kearsley St.
Flint, MI 48503

FLIA

FLINT ART FAIR

SATURDAY 10 AM - 6 PM

SUNDAY 11 AM - 5 PM



June
9 & 10



FLINTARTFAIR.ORG

FLINT INSTITUTE OF ARTS | 1120 E KEARSLEY ST | FLINT 48503 | 810.234.1695