



annual report 2005

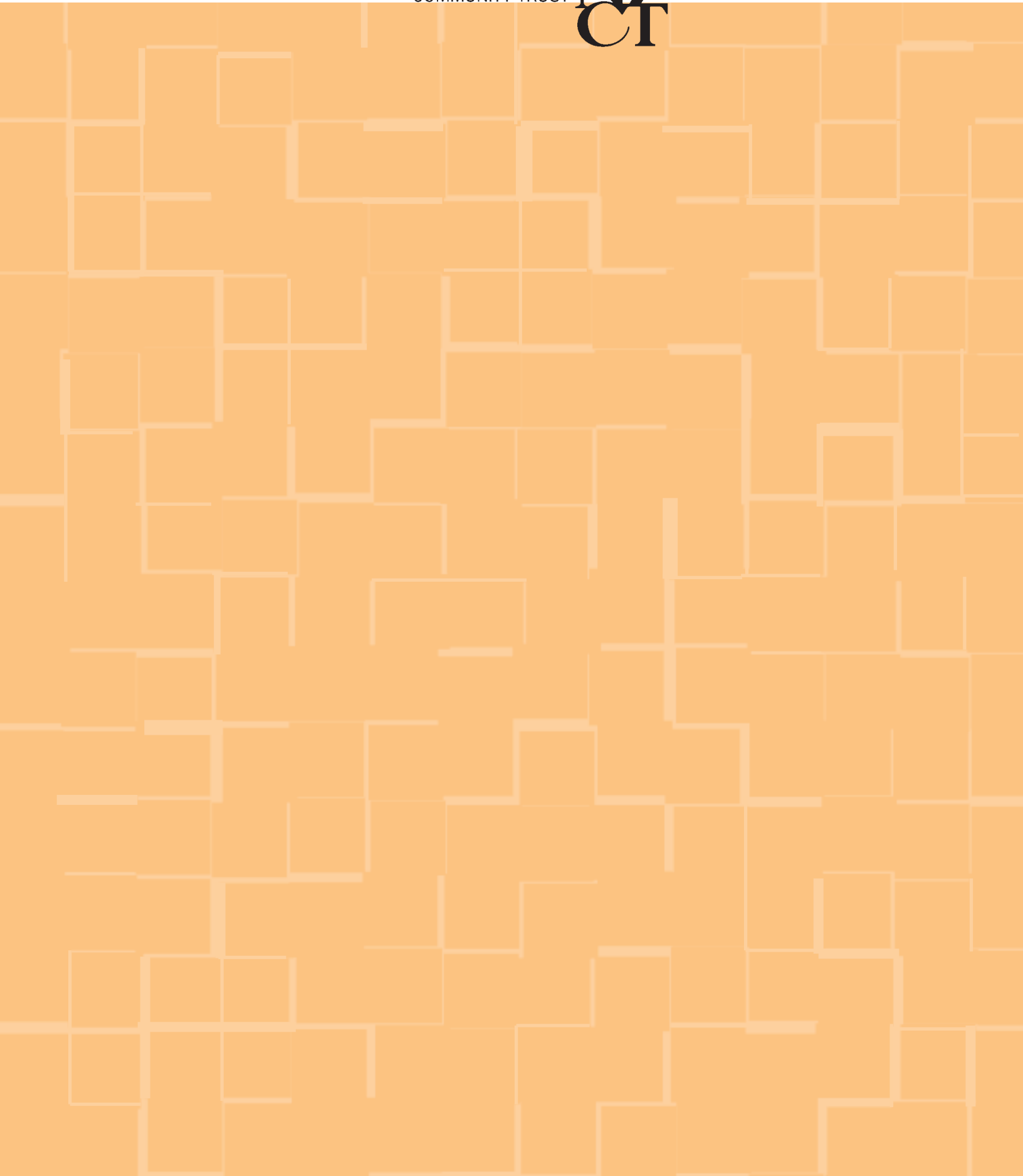
THE NEW YORK
COMMUNITY TRUST



table of contents

Welcome	2
Chairman's Message	4
President's Message	5
Giving	6
Selected Grants	14
How to Apply for a Grant	17
Becoming a Donor	18
Guidelines for Attorneys	22
Financial Statements	24
Notes.....	27
Auditors' Report.....	29
Financial Highlights	30
Investment Committee	31
Governing Body	32
Suburban Divisions	34
Trustee Banks	38
Staff	39
Funds in 2005	40
Grants in 2005.....	52

THE NEW YORK
COMMUNITY TRUST





welcome



AMBULATORY PEDIATRIC
ASSOCIATION

2

...perfect is from



S

ince 1924, The New York Community Trust has built a philanthropic endowment to support the nonprofits that make our city a vital and secure place in which to live and work. Built with the charitable passions of New Yorkers who want to make a difference, The Trust had assets of \$1.9 billion in almost 1,800 charitable funds in 2005, and made grants totaling \$137 million. We help donors with their giving today, and enable their generosity to continue after their lifetimes, supporting the causes they cared about and solving problems we can't now imagine.

The Trust makes it easy to be a philanthropist. We invite you to learn about us, our grantmaking, and how to join our family of donors.



message from the chairman

The Trust's 2005 Annual Report focuses on projects we have funded in the environmental field. There are numerous critical challenges confronting our environment and they affect all of us. Governments and private philanthropy must increase efforts to protect our environment, such as safeguarding our health from environmental toxins, cleaning up contaminated land sites, and improving the quality of the water we drink and the air we breathe. The following pages describe some of the projects The Trust supported in 2005 in furtherance of this objective.

The fund that enabled us to make many of these grants was created by Dorothy Kraft, who died in 1995. By her will, Ms. Kraft established an endowment fund at The Trust in excess of \$50 million and specified that grants be made in the field of environmental protection. Ms. Kraft gave The Trust the responsibility to determine the specific grants to make each year within this field of interest.

In discharging this responsibility, The Trust's program officers studied critical issues in the environmental field, developed five categories of environmental protection on which to focus our grantmaking, began an ongoing process of identifying the most effective programs and charities in each category, and leveraged our efforts by collaborating with other environmental funders on initiatives and advocacy activities.

We believe that a field-of-interest fund, such as the one that Ms. Kraft created with us, is the most effective grantmaking arrangement for a donor who wishes to create a permanent legacy to address the needs of a particular field. Indeed, administering field-of-interest funds is one of the purposes for which The Trust was originally founded.

Once again, I would like to acknowledge and thank the exceptional staff at The Trust, and especially our remarkable president, Lorie Slutsky. Their expertise, hard work, and professionalism are the basis of The Trust's pre-eminent reputation.

SAMUEL S. POLK



message from the president

I've spent my entire career at The Trust; no two days are ever the same and the issues we deal with are always intriguing. And each day, I get to see the generosity of New Yorkers and the good works their money makes possible.

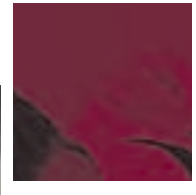
One of our continuing challenges is finding points of intersection—between donors and charities, and among the problems that concern us. The Giving section of this report illustrates how we accomplish that. The nexus between environmental toxins and human health is now shockingly clear, and should be setting off loud alarm bells in the halls of government and industry. We have been using our expertise in health and the environment, and funds we have for those purposes, to make grants for projects that each contribute to finding solutions that improve our health by protecting our environment.

It's akin to doing a giant jigsaw puzzle that has a lot of pieces.

Fitting those pieces together is at the core of our discretionary grants program—grants brought to our board by staff—funded in large measure by past donors who, in their wills, added to or set up funds in our organization. Those funds are also part of the puzzle: while many are for general charitable purposes, some are for broad or narrow fields of interest and influence the kinds of projects we support. Another piece of the puzzle is our current donors, those generous New Yorkers whose philanthropic interests are as varied as the challenges and opportunities in the City. The hope implicit in each fund created and in each dollar distributed is the essence of The Trust.

LORIE A. SLUTSKY

giving



AMBULATORY PEDIATRIC
ASSOCIATION

6

“Better living through chemistry” may be remembered by older boomers as the tag line of DuPont, when America believed that all chemistry was progress. But the companies that gave us nylon, neoprene, and Kevlar also made DDT and CFCs, ozone-depleting chemicals used in refrigerants and aerosol sprays. And now Teflon—the miracle product that transformed cookware and stain protection for fabrics—is strongly suspected of being a carcinogen.

Seven billion pounds of chemicals are released into the air, water, and soil each year—and that includes only 650 of the 75,000 chemicals used commercially in the United States. They’ve made possible the production of convenient and inexpensive consumer products and life-saving medicine. But the average middle-aged American has several hundred synthetic chemicals in his body that weren’t part of human body chemistry only three generations ago. And there is increasing knowledge about the effect of environmental toxins on human health—and especially on our children, who breathe more air, eat more food, and drink more water relative to their body weight than do adults.

The Trust has supported projects that work on the connection between environmental toxins and human health as part of a larger environmental program that we started in 1997 with a generous bequest from Dorothy Kraft that created the Henry Phillip Kraft Family Memorial Fund. Before then, we used limited unrestricted funds for small environmental projects in the City. But with Kraft, and its founder’s wish that we make grants for projects of international and national significance, we have become a major environmental funder. As with virtually all grantmaking investigated or initiated by our staff, we use a variety of approaches—the pieces of a puzzle—to tackle complex issues that have profound implications for our planet. In this section, we will look at five environmental health projects that reflect our multifaceted method of grantmaking.

THE PRECAUTIONARY PRINCIPLE

New chemicals are released in the United States without first being tested for their potential effects on the environment and on people. And known toxins used in industry and in consumer products, such as mercury in cars and polyvinyl chlorides (PVCs) in plumbing materials, are still not regulated by the federal government. “Better safe than sorry” describes the “precautionary principle,” the basis for a proposed environmental policy in the European Union, which calls for the immediate removal of potentially toxic chemicals as soon as there is evidence of danger, and extensive testing of new chemicals before they are approved for use.

With the federal government showing little interest in adopting the precautionary principle, environmental groups have intensified their work with business and state and local governments to adopt safer chemicals policies.

“We are working to shift government, corporations, and consumers from adopting short-term solutions that allow deliberate harm to making decisions that prevent harm to public health, the environment, and the economy. We believe this can happen when communities have the power to play an integral role in promoting human health and environmental integrity.”

—Lois Marie Gibbs,
Executive Director, Center
for Health, Environment and
Justice

The Center for Health, Environment and Justice was started in 1981 by Love Canal activist Lois Marie Gibbs. The Center runs an information clearinghouse, helps community groups translate scientific information and interpret complex data, and trains community leaders to advocate for safer policies.

A year ago, the Center started the Be Safe campaign, which has attracted 400 health, environmental, civic, child advocacy, religious, and labor groups to join. With our grant, it is working with these organizations on local efforts to implement the precautionary principle. It is developing model corporate agreements, municipal resolutions, and purchasing policies to phase out products containing toxic chemicals, and posting them on its Web site; and staff are giving technical and organizing support to groups that want to promote local or state policies.

“Antibiotic resistance is undeniably one of the most pressing public health threats we face today. I’m especially proud of KAW’s tenacity and resolve in bringing about change—our work has led to the reductions in agricultural antibiotic use reported over the past several years.”

—Richard Wood, KAW Steering Committee Chair

THE ANTIBIOTIC OVERLOAD

Antibiotics have helped cure many diseases that have plagued humanity for thousands of years; surely they don’t belong in the same category as toxic chemicals. But their effectiveness is waning: many bacteria are able to mutate and develop resistance to the drugs, and doctors may soon be stripped of their first line of defense against infectious disease. Overuse is the main cause of increasing bacterial resistance. Some of the problem can be traced to misuse in health care, but overwhelming use in animal production is the main culprit; 70 percent of all antibiotics used in the United States are given to animals. Chickens, pigs, and even salmon are often grown in huge “factories,” and require antibiotics to prevent disease. They’re also given directly to animals in large doses to treat disease and promote growth. All this leads to drug-resistant infections in humans, and environmental harm as animal waste washes into streams and estuaries, affecting fish and other wildlife.

Five years ago, 13 health, environmental, sustainable agriculture, religious, humane, and other organizations came together and started Keep Antibiotics Working:

The Campaign to End Antibiotic Overuse (KAW).

Its advocacy with fast-food companies, other businesses, policymakers, and the media played an important role in prompting the Food & Drug Administration (FDA) to issue its first-ever ban on an agricultural antibiotic, prompting Tyson—the nation’s largest chicken producer—to state it has slashed its use of medically important antibiotics in chickens by 93 percent, and prompting a division of Smithfield—the world’s largest hog producer—to end use of medically important antibiotics as growth promoters in young hogs. With our grant, KAW is pushing the FDA to start antibiotic review, petitioning the Department of Agriculture to improve regulations for labeling of antibiotic-free meat, and lobbying Congress for a bill to remove antibiotics from food production.

THE MEDICAL EDUCATION GAP

American children get sick differently today from American kids of yesterday. Infectious diseases are increasingly rare, and infant mortality rates have fallen drastically. Now, chronic diseases, such as asthma, cancer, neurological and behavioral conditions, and congenital defects of the reproductive system, are among the most serious illnesses suffered by children.





KEEP ANTIBIOTICS WORKING:
THE CAMPAIGN TO END ANTIBIOTIC
OVERUSE (KAW)



INFORM/SPRINT RECYCLING

10

Research is increasingly linking toxic chemicals in the environment to this changed disease pattern. Dozens of synthetic chemicals are thought to have properties that mimic natural hormones and neurotransmitters, which have serious pharmacological effects. Medical students now get only six hours of environmental health education, leaving pediatricians virtually unprepared to diagnose and treat diseases caused by toxic chemicals.

The Ambulatory Pediatric Association was started in 1960 to improve patient care, teaching, and research. Its 2,000 members are faculty at the country's leading medical schools and children's hospitals—and the educators of the next generation of pediatricians. In 2001, the Association began the country's first fellowship program in environmental pediatrics. The Mount Sinai School of Medicine was one of three sites selected for the fellowships, where interns and residents combine academic coursework, research, and clinical practice. The fellows are trained in epidemiology, biostatistics, exposure assessment, toxicology, community outreach, and policy analysis. When they graduate, each will take research and training jobs at leading pediatric programs around the country.

“Diesel truck emissions were a factor in the EPA's decision to rank New York as the #1 state where residents are most likely to get cancer just from breathing the air. This initiative aims to increase the use of natural gas-fueled refuse trucks, which would bring cleaner air and quieter neighborhoods to all of New York City for generations to come.”

—Laurie Rich,
Vice President,
Programs, INFORM

THE AIR WE BREATHE

New Yorkers will not be surprised to learn that our city's air quality is among the worst in the country, regularly violating federal health standards. Vehicle emissions, particularly those from heavy-duty diesel trucks and buses, are the largest source of air pollution; garbage trucks are the most inefficient users of diesel fuel.

For three decades, INFORM has identified practices that companies and municipalities can take to prevent environmental damage. Its national Greening Garbage Trucks Initiative promotes conversion from diesel to clean, natural gas. In New York, it decided to begin with commercial garbage and recycling trucks because reduced emissions would ease the serious public health burdens in the poor neighborhoods where private waste transfer stations are located.

INFORM has compiled data on the carting industry and information on alternative fuels for environmental and community groups, as well as fleet operators. It persuaded City Council members to introduce legislation supporting natural gas for garbage trucks and persuaded one commercial operator, Sprint Recycling, to convert to natural gas. With our grant, INFORM will help that fleet with its conversion and educate additional carting companies about the economic and environmental benefits of clean fuel technology. And it will monitor progress on the City's Solid Waste Management Plan and continue to work with the City Council on legislation. INFORM's efforts will improve air quality, protect the health of New Yorkers, and create a model for other U.S. cities.

“The fellowship was critical to my development as a pediatrician-researcher. During my two years at Mount Sinai, I've published review articles on outdoor air pollution and lead poisoning. Under Dr. Phil Landrigan's mentorship, I've also estimated the health and economic consequences of mercury pollution in America and developed a model for children's environmental health clinics that can be applied nationwide. I now provide policymakers with solutions for the leading health problems that children face today.”

—Dr. Leo Trasande,
Director, Center for
Children's Health and
Environment, Mount Sinai
School of Medicine

“We started our Environmental Justice and Community Development Project in 1993 to address the unfair burden of environmental harm on low-income communities of color. Our work with the Concerned Residents Organization in Soundview is an excellent example of how we work with communities to assert their right to a healthy environment.”

—Michael Rothenberg,
Executive Director,
New York Lawyers for the
Public Interest

THE SOIL BENEATH OUR FEET

The Department of Education will build 80 new schools to accommodate the growing number of students. With the scarcity of land in the City, it is considering buildings once used as factories and warehouses, and constructing on land contaminated from prior industrial uses. You might think that because kids will spend the day in these buildings, the City would be particularly careful about environmental reviews. You would be wrong.

The Bronx Academy High School opened in September 2004 in the Soundview section on the former site of Loral Electronics Systems, which, until it closed in the late 1990s, designed, manufactured, and tested electronic equipment for the defense industry, using 13 hazardous materials that generated thousands of pounds of toxic waste each year.

The School Construction Authority had done an environmental assessment in 2004 and found that six heavy metals and toxins in the soil and groundwater significantly exceeded State standards. Despite this, the City approved an override of its own environmental review, and construction proceeded. Since then, students have complained of skin rashes, and concerned residents of Lafayette Houses, a large public housing project adjacent to the Loral site, learned that additional tests have been performed, but they've been unable to get the results.

The Concerned Residents Organization turned to New York Lawyers for the Public Interest. With our grant, New York Lawyers will keep an eye on the decontamination and monitoring program that the Construction Authority agreed to set up. To make sure that other schools are not built on contaminated land, it will research past uses of all potential sites and make sure that the full environmental reviews are done.



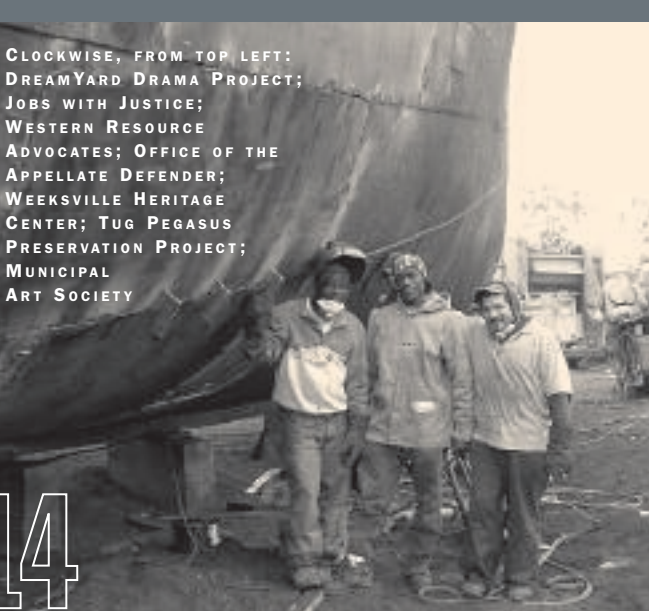
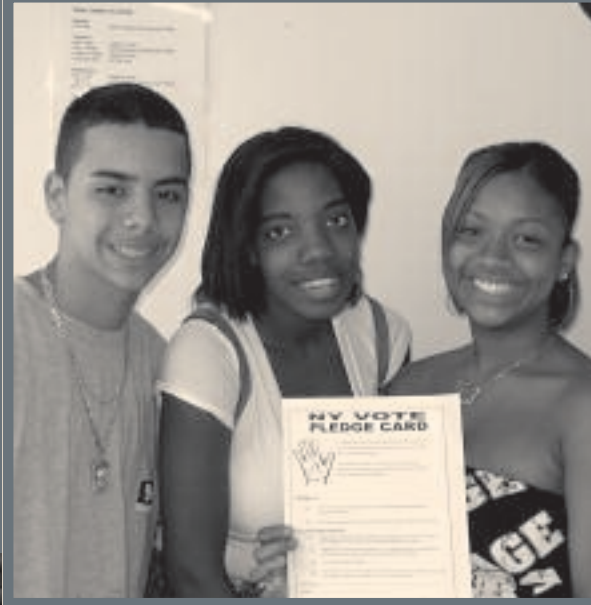
The safety of the food we eat, the water we drink, the air we breathe, and the buildings in which we live and work should be of paramount importance to us all; reducing and cleaning up environmental toxins should be the responsibility of government and producers. Unfortunately, public health is often not a priority. But many individuals and nonprofit organizations *are* committed to finding—and putting together—the many pieces of the environmental puzzle. The New York Community Trust is grateful to have the resources to help them.



**DEAD
END**
DEPT. OF
TRANSPORTATION

NEW YORK LAWYERS FOR THE PUBLIC
INTEREST/SOUNDVIEW RESIDENTS

selected grants



CLOCKWISE, FROM TOP LEFT:
DREAMYARD DRAMA PROJECT;
JOBS WITH JUSTICE;
WESTERN RESOURCE
ADVOCATES; OFFICE OF THE
APPELLATE DEFENDER;
WEEKSVILLE HERITAGE
CENTER; TUG PEGASUS
PRESERVATION PROJECT;
MUNICIPAL
ART SOCIETY

To get a full flavor of our grantmaking, we've given thumbnail descriptions of selected grants in each of our program areas. We urge you to read our grants newsletter, issued six times a year, for a full view of our grants program.

CHILDREN, YOUTH, AND FAMILIES

GIRLS & YOUNG WOMEN

Business Outreach Center Network, to help young women develop family child-care businesses.

Legal Momentum, to increase the number of women employed in the City's construction industry.

HUNGER & HOMELESSNESS

Citymeals-On-Wheels, to refer Chinese-speaking elders in Brooklyn Community District 1 to food assistance and social services.

Women's Housing and Economic Development Corporation, to help homeless families in the South Bronx moving from shelters to permanent housing by coordinating social services, referring them to medical care, and helping them find jobs.

SOCIAL SERVICES & WELFARE

Edwin Gould Services for Children and Families, to improve operations at seven minority-led foster care agencies through enhanced data collection and staff training.

Low Income Investment Fund, to help child-care centers for poor children make renovations, remove lead paint, and negotiate leases.

SUBSTANCE ABUSE

Outreach Project, for a two-year research and advocacy campaign to identify barriers to and make recommendations for adolescent drug treatment in New York City.

Samaritan Village, to reach out to veterans with alcohol and drug problems and get them into treatment.

YOUTH DEVELOPMENT

Greenwich Village Youth Council, to add an employment program and longer counseling hours to its drop-in program for homeless gay and lesbian youth.

Mentoring USA, to recruit new volunteers to mentor foster care teens who are about to be adopted, and begin mentoring foster care students in four public schools.

COMMUNITY DEVELOPMENT AND THE ENVIRONMENT

CIVIC AFFAIRS

Constitutional Education Foundation, for civics education in schools.

Jobs with Justice, to encourage voting and civic involvement in poor neighborhoods.

COMMUNITY DEVELOPMENT

Goddard-Riverside Community Center, to help tenant associations in federally foreclosed housing in Harlem and Bushwick monitor renovations and prepare to manage their buildings.

Neighborhood Housing Services of Jamaica, to educate southeast Queens residents about predatory lending, provide counseling, and offer loans to homeowners.

WORKFORCE DEVELOPMENT

City Futures, to advance workforce development strategies that promote living-wage jobs.

New York Unemployment Project, to educate low-income immigrant workers about New York's unemployment insurance program.

TECHNICAL ASSISTANCE

Municipal Art Society, to train community board members and high school students to use its computerized mapping system, which allows users to map a specific location and its building and property data, neighborhood information, and more.

Taproot Foundation, for corporate volunteers to help nonprofits with marketing.

CONSERVATION AND ENVIRONMENT

New York:

Southwest Brooklyn Industrial Development Corporation, to make the operations of local industrial firms cleaner and safer.

United Community Centers, to expand its local farmer's market in East New York, plan for the creation of a food co-op, and hold nutrition and cooking workshops.

National & International:

Ceres, to educate institutional investors about the financial risks of global warming.

Western Resource Advocates, to help residents in Colorado, Wyoming, and New Mexico advocate for responsible energy development and protect the environment.

EDUCATION, ARTS, AND THE HUMANITIES

ARTS AND CULTURE

Ballet Hispanico, to strengthen the planning and fundraising of a growing Hispanic dance troupe.

DreamYard Drama Project, to start arts programs for students in 34 poor north Bronx public schools.

EDUCATION

Asphalt Green, to expand sports and fitness programs during recess in public elementary schools.

New Leaders for New Schools, to recruit and prepare principals to start new, small public high schools.

HISTORIC PRESERVATION

Tug Pegasus Preservation Project, to preserve a historic tugboat as a museum and classroom.

Weeksville Heritage Center, to create a fundraising and membership plan for a historic African-American site in Brooklyn.

HUMAN JUSTICE

Office of the Appellate Defender, to expand a program that helps poor felons find shelter, drug treatment, and job training after their release.

Jewish Board of Family and Children's Services, for a program that promotes positive relations between Russian-Jewish and Arab students at three south Brooklyn high schools.

HEALTH AND PEOPLE WITH SPECIAL NEEDS

AIDS

Aid for AIDS, to coordinate services for Latino immigrants with AIDS.

Gay Men's Health Crisis, for an HIV prevention project for young women of color.

BIOMEDICAL RESEARCH

International AIDS Vaccine Initiative, for research in New York City to develop an AIDS vaccine.

Cancer Research Institute, for clinical trials of cancer vaccines.

BLINDNESS AND VISUAL DISABILITIES

Lighthouse International, to help stabilize an important City vision rehabilitation agency.

Manhattan Eye, Ear & Throat Hospital, to test a new treatment for wet macular degeneration.

CHILDREN AND YOUTH WITH DISABILITIES

Brooklyn Public Library Foundation, to expand a storytelling and reading program for disabled children.

League for the Hard of Hearing, to screen pre-school children for hearing impairments.

ELDERLY

Alzheimer's Disease and Related Disorders

Association, to train emergency room staff to improve their care of people with Alzheimer's disease.

Vera Institute of Justice, for a guardianship program for incapacitated elderly and mentally ill people.

HEALTH SERVICES

Fund for Public Health in New York, for a project to test and treat teenagers for Chlamydia, a serious disease for young women.

Institute for Urban Family Health, to improve cancer detection and treatment through the use of an electronic medical record system.

HEALTH SYSTEMS AND POLICY

Commission on the Public's Health System, to improve access to health care for uninsured residents of the South Bronx, Washington Heights, and Harlem.

National Family Planning and Reproductive

Health Association, to advocate for continued federal funding of family planning services for poor women.

MENTAL HEALTH AND MENTAL RETARDATION

HeartShare Human Services of New York, to get health care for medically ill, mentally disabled adults who live with their families in Queens and Brooklyn.

St. Paul's Center of New York, to expand a program that uses nurse practitioners to provide mental health care to homeless, mentally ill adults.

SPECIAL PROJECTS

SPECIAL PROJECTS

Interfaith Center, to train religious leaders of different faiths in mediation and dispute resolution.

International Rescue Committee, to provide resettlement services and other assistance to families displaced by Hurricane Katrina.

how to apply for a grant

The Trust makes grants in four general areas: Children, Youth, and Families; Community Development and the Environment; Education, Arts, and the Humanities; and Health and People with Special Needs. We are committed to sticking with significant issues that may not lend themselves to quick or easy solutions, while remaining open to projects that tackle emerging problems and to organizations that may be new to us.

Grants are made primarily to nonprofit organizations located in the five boroughs of New York City. Our suburban divisions handle grants on Long Island and in Westchester (page 34). Grants for programs outside our area generally are from funds designated for specific charities or that have been made at the suggestion of donors.

Applicants should begin by requesting “Guidelines for Grant Applicants” and one or more of the four brochures that describe in detail each of our grantmaking areas. We also suggest that you request copies of our bimonthly grants newsletter to get a sense of the kinds of projects we currently fund. Please call our receptionist at (212) 686-0010, ext. 0, or visit our Web site, www.nycommunitytrust.org.

If, after you have read our guidelines, you believe that one of your proposed projects meets our criteria, send us a cover letter along with a completed application form (available on our Web site), and a copy of the proposal—not more than 10 pages plus appendices. Include in your letter a brief summary of the proposal, the amount requested, and the results expected. We do not accept proposals sent by fax or e-mail.

Please note that we don’t make grants to individuals and rarely for endowments, building campaigns, deficit financing, films, general operating support, or religious purposes.

We have no specific submission deadlines. Our Distribution Committee meets six times annually, and grant applications are accepted throughout the year.

We’ll let you know within two weeks that we have received your material. During the review process, Trust staff will analyze your proposal, determine if and how it fits into our grantmaking program, and check to see if there is adequate money available in an appropriate fund. We’ll get in touch with you if we have further questions or need more information.

The Trust welcomes your application, but because we can’t fund every proposal submitted to us, we urge you to send yours to several other funders as well.

becoming a donor

The New York Community Trust offers donors with every kind of philanthropic interest an easy and flexible way to accomplish their charitable objectives and receive the maximum tax deduction allowed by law.

TYPES OF FUNDS

An **unrestricted fund** is a good option for donors who want to be assured that their gift will always be used to meet vital needs and improve the quality of life in New York City. Our staff is expert in identifying community needs and the nonprofits best equipped to meet them.

A **donor-advised fund** is an unrestricted fund legally, but the donor recommends the organizations to receive grants. Although we cannot, by law, be bound by these recommendations, we take them very seriously and approve grants to recommended nonprofits that meet charitable standards for programmatic and financial soundness.

In a **field-of-interest fund**, charitable giving is focused on issues of concern to the donor, such as child and family welfare, youth, education, human justice, conservation, or health policy. The Trust makes grants that meet current needs in the chosen fields. Field-of-interest funds can also be established to be advised by the donor.

A **designated fund** is for donors who want to support specific organizations but recognize that the world may change. They establish a designated fund in The Trust rather than leave it directly to the charity to assure that their gift remains relevant over time and responsive to changing circumstances. (See page 23 for an explanation of the variance power.)

SETTING UP THE FUND

Each donor establishes a fund. Donors first decide what they want to accomplish with their philanthropy; our staff is happy to help clarify and refine goals. They then choose the name of the fund, typically using their own names or the names of individuals to be honored or memorialized. Donors who prefer anonymity can choose a general name.

There are at least three ways of giving to a fund with us.

Giving Now: You can set up a fund to support charities during your lifetime and endow them to continue your philanthropy for future generations. Many of our donors regularly add money to the funds they have established.

Deferred Giving: Donors can set up funds through deferred giving arrangements. A key feature of many estate plans is a tax advantage to you now for the commitment of a charitable gift later. Charitable Remainder Trusts, Charitable Lead Trusts, and gifts of life insurance or retirement plan assets can all be used.

Wills: After providing for personal bequests, you may include provisions for setting up a fund with us or adding to one you already have here. You will save estate taxes and ensure that the charitable work you care about will be continued.



Peter G. Peterson

Pete Peterson knows about making money. He is the senior chairman and co-founder of the Blackstone Group, a leading

investment and advisory firm. He was chairman of the Federal Reserve Bank of New York from 2000 to 2004. Before he founded Blackstone, he was the chairman and CEO of Bell and Howell, Lehman Brothers, and Lehman Brothers Kuhn, Loeb.

Mr. Peterson has also done his time in government, as assistant to President Nixon on international economic affairs, and as Secretary of Commerce. He's also a prolific writer: his last book, *Running on Empty: How the Democratic and Republican Parties are Bankrupting Our Future and What Americans Can Do About It*, made *The New York Times* best seller list.

And Mr. Peterson knows how to give away money. He chairs the Council on Foreign Relations and the Institute for International Economics, is founding president of the Concord Coalition, and through his fund at The Trust, he supports these organizations and many, many others. Like many of our donors, he adds to his fund by contributing appreciated stock. But Mr. Peterson also holds non-publicly traded securities, including limited partnership interests, assets that The Trust has long experience in converting to the financial benefit of charity.

"My wife, Joan Ganz Cooney, and I have been delighted with our long relationship with The Trust, which dates from the 70s. In fact, as checkered as my career has been, I can say

that The Trust has been one of the constants. Sure, steady, reliable—a sound charitable investment."

One of the charities that received a grant from the Peterson Fund in 2005 was the New York Landmarks Conservancy, for its Living Landmarks.

Beth M. Uffner

"I'm lucky. Having been born and raised in New York City, I can't remember a time that I wasn't exposed to the arts.



GRACE UFFNER, ROBERT GOLDFARB, BETH UFFNER

"In the late 80s, I was a single, successful woman living in Los Angeles with my own business as a TV writers' agent. But my life became complete when I adopted my daughter, who was then 8-1/2 years old. Grace had shown great interest in and a talent for art in the art therapy classes that were offered by the wonderful facility in which she then lived. The agency decided to match her with me, one of the great decisions of the 20th Century.

"When she actually became my daughter in December 1987, I did what every New York mother would do: signed her up for ballet lessons; took her to the theater; played show tunes at home. I had this stubborn feeling that the arts could and would transform her, bolster her self-esteem, and give her a unique identity.

"Of course, this was not just a beautiful technicolor movie. It was hard for both of us and we had many times of crisis. Her early teenage years were very difficult, but in her second year of high school, she was taken by a friend to audition for the school play, 'Oliver,' and won the role of the Artful Dodger. Up to this point, she had been shy and self-conscious to the point of concern. At the opening, she was a smash. This withdrawn teen emerged with a bang.

"She majored in Studio Arts at Bard College. But like many students in the arts, she graduated with no job prospects in her field. She worked at Bard for a few years, and decided to pursue scenic painting, training for two years as a scenic artist. Last summer, she worked in summer stock and was accepted into the Union as an apprentice painter after an exhaustive testing process.



"She now has her own apartment in the Village; she works all the time; she loves New York, a place that once frightened her. She loves her life and, believe me, she's earned the right to love it.

"When I moved back to New York after 30 years in Los Angeles, I wanted to use the money I was so fortunate to have made to help children like my daughter. My theory had been proven right, the arts could and did transform. A friend suggested I call The New York Community Trust. They set me up with two wonderful, knowledgeable program officers who have guided me and introduced me to neighborhood groups and organizations that I would never have known existed and who are doing the most incredible work with children and teens through the arts.

"Especially after 9/11, when even prominent cultural organizations had trouble raising money, I realized how terribly important it was for me and others to do even more than we'd been doing before. My involvement with The Trust also brought into my life the Center for Arts Education, and I now sit on its Board. I see firsthand how an organization like this can help change teenagers' lives through the arts.

"I've had a fabulous career; I now live in the city I love where I can and do participate in so many cultural events; my daughter is happy, healthy, and a productive member of the arts community; and, this is the icing on the cake, I found my prince charming and we were married on February 5, 2006. And guess what? He's an artist and musician! Didn't I tell you? I'm lucky!"

A grant from the Beth M. Uffner Arts Fund supports Boys & Girls Harbor, a youth program in East Harlem, for its Conservatory of the Performing Arts.



Helen Merrill

"My agent Helen Merrill represented playwrights, composers, and designers. She really loved her clients, including me; I was with her for 22 years (as a playwright).

"She really was a workaholic (though a happy one), and she lived in a 4th floor walk-up, and thus she really didn't spend much money. So when she died, she had a fairly substantial sum to leave; and she had told several of us clients that she wanted her money used after her death to fund grants for young, struggling playwrights.

"I had a couple of playwriting grants early in my career, and they were really life savers. So I could imagine how helpful Helen's grants could be.

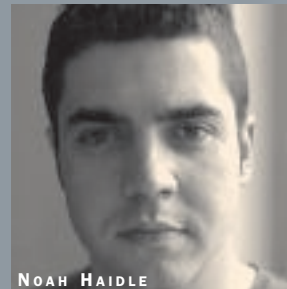
"The New York Community Trust was chosen—either by her or perhaps by leprechauns—to invest the money and facilitate the disbursement of funds to unsuspecting, but delighted, playwrights.

"She had told me and other clients like writer Paul Rudnick and designer Susan Hilferty that she wanted us to be on the committee awarding the funds. And so every year since 1999 we and some chosen others (Morgan Jenness, the late Mel Gussow, Emily Morse) have been meeting to read and discuss up-and-coming playwrights, and to choose recipients. We choose four playwrights a year; and sometimes we include a grant to a middle-career playwright as well.

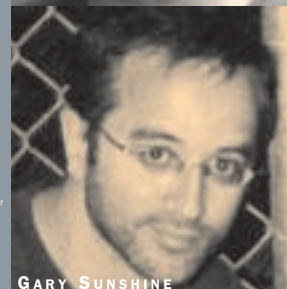
"The money awarded so far has always been from the interest on Helen's money, which feels comforting, and means The Trust is doing a good job. I guess they didn't take my tip about investing in giggle.com, a satiric search engine that refuses to take you anywhere. I thought people would like it—it's like a pet rock, something you can stare at for a little bit, give at Christmas. But clearly I'm not a financial wizard, and they march to their own drummer in terms of investing.

"Helen really was an important person in my life. She was the kind of agent who loaned you money when you needed it; or would make sure you could cash the checks she wrote you immediately, even before the sums had actually cleared her account. And it makes me happy to share this generous side of Helen's with other writers, and grateful for The Trust's careful and attentive help with administering this trust."

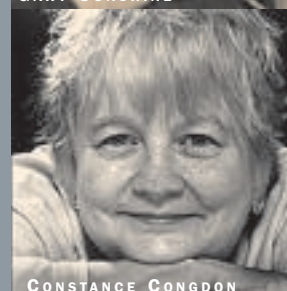
—Chris Durang



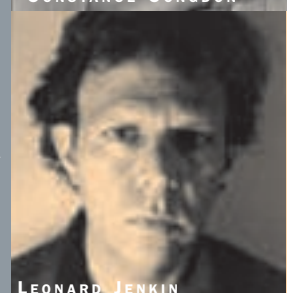
NOAH HAIDLE



GARY SUNSHINE



CONSTANCE CONGDON



LEONARD JENKIN

2005 AWARD WINNERS



TYPES OF ASSETS

Funds may be established with the following: cash, securities traded on major exchanges, closely held stock, mutual fund shares, retirement plan assets, real estate, interests in limited partnerships, and literature copyrights.

We are glad to discuss proposed contributions with you. We may not be able to accept assets that cannot readily be converted to the financial benefit of charity or that carry unusual potential liability.

FUND ADMINISTRATION AND FEES

A fund established with our organization may be held in trust with one of our 13 trustees (see page 38), or it may be held by Community Funds, Inc., our not-for-profit corporation. Both operate as The New York Community Trust with a single governing body. If a fund is set up in trust, the bank handles the investments. If it is set up in Community Funds, our distinguished Investment Committee (see page 31) oversees the performance of the outside portfolio managers. The determining factor is the inclination of the donor. The service we provide is the same.

Funds that are held in trust are also charged a trustee's fee set by the bank. It may be negotiated between the bank and the donor at the inception of the fund, and varies from bank to bank.

The administrative fee charged to our funds is remarkably low: 2.5 percent of grants paid or 3/10th of 1 percent (30 basis points) of assets, whichever is greater.

The Internal Revenue Service has classified The New York Community Trust and its affiliate, Community Funds, Inc., as "tax exempt" under Section 501(c)(3) of the Internal Revenue Code; as a "publicly supported" organization under Section 170b(1)(A)(vi); and as "not a private foundation" under Section 509(a)(1). This status ensures donors the maximum tax benefit allowed by law. The Long Island Community Foundation and the Westchester Community Foundation (described on page 34) are divisions of Community Funds.

A FUND IN THE TRUST OR A PRIVATE FOUNDATION?

A fund in The Trust provides a very attractive alternative to establishing a private foundation. We are a public charity with the attendant tax advantages. A full-time professional staff takes care of all the administrative and grantmaking activities, eliminating the need to set up a separate organization, formulate policies, file innumerable forms, and monitor the status of grant recipients. Establishing a private foundation can take months and be costly; with The Trust, the legal apparatus is already in place, and creating a fund can take less than a day.

Many donors with private foundations also have funds with us. Often, the donor uses a fund here to support causes and nonprofits that are outside the general focus of the private foundation. And almost all want to join a portion of their charity with other generous New Yorkers who care about the City.

We also offer substantial advantages over most commercial donor-advised funds: lower fees, smaller minimums, the capacity to accept unusual gifts, and an in-depth knowledge of the nonprofit community. Because our business is philanthropy, we can help make sure that your money makes a difference.

FURTHER INFORMATION

The New York Community Trust is happy to work with you or with your lawyer, trust officer, or other financial advisor.

We invite you to get in touch with us at any time. Call our general counsel Jane L. Wilton (Ext. 379), Robert V. Edgar (Ext. 373), or Gay Young (Ext. 377) in our Donor Relations Department at 212-686-0010.



guidelines for attorneys



NEW YORK LAWYERS FOR THE PUBLIC
INTEREST/SOUNDVIEW RESIDENTS

Establishing a fund in The New York Community Trust for your client is a relatively straightforward process. Our comprehensive booklet, *Creating a Fund Here: Suggested Words and Procedures*, provides all the relevant information: The Trust's tax classification letter, descriptive material on the different types of funds, and suggested language to help you draft instruments to provide for gifts to our organization. Call us to receive a copy.

THREE IMPORTANT FACTS

First, we are unable to accept a fund unless its terms have been reviewed by us and found acceptable. It is particularly helpful if we review the language before the instrument is executed to ensure that we can meet the donor's purpose. Second, a co-trustee is not permitted under the *Resolution and Declaration of Trust Creating "The New York Community Trust"* (the "R&D"). Third, all our funds enjoy an important advantage: if a change of circumstances makes literal compliance with the terms of the gift instrument "unnecessary, undesirable, impractical, or impossible," our governing body is able to vary them. Donors are assured that their gifts will never become obsolete; they will remain useful to the community in perpetuity.

Donors have the option of setting up funds in The New York Community Trust with a bank as trustee or in our not-for-profit corporate affiliate, Community Funds, Inc. The organizations share a governing board and file a single tax return with the IRS.

CREATING A FUND IN THE NEW YORK COMMUNITY TRUST

The R&D is a complete trust instrument. It sets out in detail the powers and duties of the Trustee Bank and the Distribution Committee. In order to establish a fund in The New York Community Trust, the founding document—whether for a bequest or a gift during lifetime—must incorporate the R&D by reference.

An advantage of The New York Community Trust is that it is not a private foundation subject to certain requirements, and the separate funds that constitute The New York Community Trust are component funds of a public charity, not private foundations. It is important, therefore, that an instrument designed to create a new component fund in The New York Community Trust adhere strictly to the provisions of the R&D; please call us for a copy.

CREATING A FUND IN COMMUNITY FUNDS, INC.

Community Funds, Inc. is a New York State not-for-profit corporation. As with a fund in The New York Community Trust, a fund established in Community Funds becomes part of a publicly supported organization, and is not regarded as a private foundation. The fund is held and administered pursuant to the provisions of the Not-for-Profit Corporation Law. Please call us for a copy of the Certificate of Incorporation and By-Laws of Community Funds.

CREATING A FUND IN OUR LONG ISLAND OR WESTCHESTER DIVISION

Because the Long Island Community Foundation and the Westchester Community Foundation are divisions of Community Funds, donors have the same options described above.

consolidated statements of financial position

THE NEW YORK COMMUNITY TRUST AND COMMUNITY FUNDS, INC.
(INCLUDING ITS LONG ISLAND AND WESTCHESTER DIVISIONS)

December 31,	2005	2004
ASSETS		
Cash and cash equivalents	\$ 12,037,184	14,701,655
Investments (note 3)	1,879,088,283	1,789,216,458
Receivables	1,750,930	1,686,990
Prepaid expenses (note 4)	3,236,870	3,603,633
Fixed assets, net	<u>1,491,107</u>	<u>1,608,804</u>
Total assets	\$ <u>1,897,604,374</u>	<u>1,810,817,540</u>
LIABILITIES AND NET ASSETS		
Liabilities:		
Accounts payable and other liabilities (note 4)	\$ 1,748,137	1,494,319
Grants payable	<u>29,295,054</u>	<u>23,686,820</u>
Total liabilities	<u>31,043,191</u>	<u>25,181,139</u>
Net assets:		
Unrestricted:		
Endowment	1,812,123,974	1,727,628,987
Available for grants	41,710,376	38,371,789
Available for administration	<u>6,236,806</u>	<u>6,854,692</u>
Total net assets – unrestricted	1,860,071,156	1,772,855,468
Temporarily restricted:		
September 11th Fund (note 6)	<u>6,490,027</u>	<u>12,780,933</u>
Total net assets	<u>1,866,561,183</u>	<u>1,785,636,401</u>
Total liabilities and net assets	\$ <u>1,897,604,374</u>	<u>1,810,817,540</u>

See accompanying notes to consolidated financial statements.

consolidated statements of activities

THE NEW YORK COMMUNITY TRUST AND COMMUNITY FUNDS, INC.
(INCLUDING ITS LONG ISLAND AND WESTCHESTER DIVISIONS)

Years ended December 31,	2005	2004
CHANGES IN UNRESTRICTED NET ASSETS:		
Revenues:		
Contributions	\$ 126,518,677	75,872,172
Interest and dividends	53,988,971	42,201,632
Gain on investments (net of investment expenses of \$9,326,123 in 2005 and \$8,709,568 in 2004)	53,271,379	101,630,459
Other (note 4)	86,500	2,033,212
	<u>233,865,527</u>	<u>221,737,475</u>
Net assets released from restrictions (note 6)	6,336,373	49,115,539
	<u>240,201,900</u>	<u>270,853,014</u>
Total unrestricted revenues	240,201,900	270,853,014
Expenses:		
Grants and services to beneficiaries	136,970,963	139,638,866
September 11th Fund grants (note 6)	6,336,373	49,115,539
Grantmaking expenses	3,271,722	3,024,414
Administrative expenses	4,892,140	4,724,391
Development expenses	1,515,014	1,442,290
	<u>152,986,212</u>	<u>197,945,500</u>
Total expenses	152,986,212	197,945,500
Increase in unrestricted net assets	<u>87,215,688</u>	<u>72,907,514</u>
CHANGES IN TEMPORARILY RESTRICTED NET ASSETS:		
Contributions	8,760	2,601,487
Transfer from the September 11th Fund (note 6)	—	4,964,919
Interest and dividends	36,707	165,461
Net assets released from restrictions (note 6)	(6,336,373)	(49,115,539)
	<u>(6,290,906)</u>	<u>(41,383,672)</u>
Decrease in temporarily restricted net assets	(6,290,906)	(41,383,672)
Increase in net assets	80,924,782	31,523,842
Net assets at beginning of year	1,785,636,401	1,754,112,559
Net assets at end of year	\$ 1,866,561,183	1,785,636,401

See accompanying notes to consolidated financial statements.

consolidated statements of cash flows

THE NEW YORK COMMUNITY TRUST AND COMMUNITY FUNDS, INC.
(INCLUDING ITS LONG ISLAND AND WESTCHESTER DIVISIONS)

Years ended December 31,	2005	2004
CASH FLOWS FROM OPERATING ACTIVITIES:		
Increase in net assets	\$ 80,924,782	31,523,842
Adjustments to reconcile increase in net assets to net cash provided by (used in) operating activities:		
Depreciation expense	317,720	351,210
Gain on investments	(62,597,502)	(110,340,027)
Loss on disposal of fixed assets	2,949	10,919
Amortization of landlord credits	(123,428)	(50,461)
Increase in receivables	(63,940)	(7,183)
Decrease (increase) in prepaid expenses	366,763	(2,040,626)
Increase in accounts payable and other liabilities	253,818	371,519
Increase in grants payable	5,608,234	2,762,558
Net cash provided by (used in) operating activities	<u>24,689,396</u>	<u>(77,418,249)</u>
CASH FLOWS FROM INVESTING ACTIVITIES:		
Purchases of investments	(664,636,728)	(597,552,961)
Proceeds from sales of investments	637,362,405	681,560,258
Capital expenditures	(79,544)	(1,618,498)
Net cash (used in) provided by investing activities	<u>(27,353,867)</u>	<u>82,388,799</u>
Net (decrease) increase in cash and cash equivalents	(2,664,471)	4,970,550
Cash and cash equivalents at beginning of year	14,701,655	9,731,105
Cash and cash equivalents at end of year	\$ <u><u>12,037,184</u></u>	<u><u>14,701,655</u></u>

See accompanying notes to consolidated financial statements.

notes to consolidated financial statements

THE NEW YORK COMMUNITY TRUST AND COMMUNITY FUNDS, INC.
(INCLUDING ITS LONG ISLAND AND WESTCHESTER DIVISIONS)

(1) Organization

The New York Community Trust and Community Funds, Inc. (including its Long Island and Westchester Divisions) are community foundations created to build permanent charitable endowments for the areas they serve. The Trust, as the consolidated foundations are hereinafter referred to, is tax-exempt under Section 501(c)(3) of the Internal Revenue Code (the Code) and has been determined not to be a private foundation under Section 509(a)(1) of the Code. The Trust administers more than 1,700 individual charitable funds, each established with an instrument of gift describing either the general or specific purposes for which grants are to be made, usually from income only, but in some cases from principal.

(2) Summary of Significant Accounting Policies

Accounting standards provide that if the governing body of an organization has the ability to remove a donor restriction, the contributions should be classified as unrestricted net assets. However, under New York State law and The Trust's governing instruments, the assets are held as endowment funds until such time (if ever) as the governing body deems it prudent and appropriate to expend some part of the principal or appreciation. Accordingly, the consolidated financial statements classify all net assets as unrestricted, except for those net assets restricted for the September 11th Fund (see note 6), but segregate the portion that is held as endowment from the funds that are currently available for grants and administration.

Cash equivalents represent short-term investments with original maturities of 90 days or less, except for those short-term investments managed as part of long-term investment strategies.

Fixed assets are recorded at cost and are depreciated on a straight-line basis over the estimated life of the respective asset. Leasehold improvements are depreciated over the life of the respective improvement or the remaining term of the lease, whichever is shorter. Fixed assets are reported net of accumulated depreciation of \$514,285 in 2005 and \$203,341 in 2004.

Investment expenses include fees for bank trustees, investment managers, and custodians.

Grants and services to beneficiaries are expensed upon approval of the Distribution Committee of The New York Community Trust or the Board of Directors of Community Funds, Inc.

Accounting estimates are an integral part of the consolidated financial statements prepared by management and are based upon management's current judgments. Actual results could differ from those estimates.

Certain 2004 amounts have been reclassified to conform to the 2005 presentation.

(3) Investments

Investments are carried at fair value. Investments in non-publicly traded securities are based upon information provided by fund managers, which are reviewed for reasonableness, and other valuation techniques. The carrying amounts of all other financial instruments approximate fair value.

Investments consist of the following at December 31, 2005 and 2004:

	2005	2004
U.S. large cap equities	\$ 621,735,258	691,932,689
Fixed income	402,618,676	452,670,002
Cash equivalents	302,331,054	164,268,297
International equities	241,014,939	208,481,312
U.S. mid/small cap equities	166,166,337	154,566,856
Limited partnership interests	37,494,663	44,356,938
Absolute return funds	37,716,157	—
Real estate-marketable and nonmarketable	33,088,062	37,575,539
Balanced funds	27,142,629	29,439,362
Private equity	7,382,971	4,073,434
Other	2,397,537	1,852,029
	<u>\$ 1,879,088,283</u>	<u>1,789,216,458</u>

notes continued

The investments of The New York Community Trust (NYCT) are held in individual trusts at the bank designated by the donor in the instrument of gift. The investments of Community Funds, Inc. (CFI) are determined based on the liquidity requirements of individual funds. The breakdown is as follows:

	2005	2004
NYCT Bank Trusts	\$ 915,645,963	918,943,737
CFI Investment Pool	568,870,612	518,336,661
Short-term fixed income	272,434,582	170,660,050
CFI mutual funds	71,645,855	123,449,327
Other	50,491,271	57,826,683
	<u>\$ 1,879,088,283</u>	<u>1,789,216,458</u>

(4) Pension and Postretirement Medical Benefit Plans

The Trust administers a noncontributory defined benefit pension plan covering substantially all employees. Benefits are based on years of service and the employee's compensation during the five highest consecutive years during the last ten years of employment. The Trust also provides medical insurance benefits for its eligible retired employees.

The following sets forth financial information about the plans as of December 31, 2005 and 2004:

	Pension benefits		Other benefits	
	2005	2004	2005	2004
Benefit obligation at				
December 31	\$ 11,296,678	10,361,166	2,940,153	1,153,931
Fair value of plan				
assets at December 31	<u>12,164,182</u>	<u>12,029,438</u>	<u>—</u>	<u>—</u>
Funded status	<u>\$ 867,504</u>	<u>1,668,272</u>	<u>(2,940,153)</u>	<u>(1,153,931)</u>
Prepaid (accrued) benefit				
costs recognized in the				
consolidated statements				
of financial position	\$ 3,236,870	3,510,619	(1,364,013)	(1,072,066)
Benefit costs (credit)	273,749	(1,947,612)	348,365	92,254
Benefits paid	218,809	288,126	56,418	51,745
Accumulated benefit obligation	8,420,182	8,008,292	—	—

In 2004, an adjustment was made to prepaid pension to reflect a change in the method of allocation of plan assets which is included in other revenue.

The discount rates used to value the pension and other benefit plans range from 5.5% to 5.75%. The weighted average expected return on plan assets and rate of compensation increase for the calculation of the pension benefits is 8% and 4% as of December 31, 2005. The health care trend rate assumption for 2005 was 9.5% declining each year to 6.5% in 2011.

The pension plan is invested in a balanced portfolio of equity and fixed income securities. Annual projected benefit payments for the pension and other benefit plans are expected to average \$460,000 and \$101,000, through 2015, respectively.

The Trust also sponsors a defined contribution retirement plan for employees, in which contributions are based upon a specified percentage of salaries. Retirement plan expense was \$429,396 and \$385,196 in 2005 and 2004, respectively.

(5) Commitments

On March 30, 2004, The Trust entered into a lease agreement for office space expiring March 31, 2020. Future minimum rental payments for the new lease are approximately \$1.2 million in 2006 through 2009, \$1.3 million in 2010, and a total of \$13.0 million thereafter through 2020.

Rent expense for the years ended December 31, 2005 and 2004, net of sublease income of \$537 in 2005 and \$92,000 in 2004, amounted to \$925,183 and \$1,010,500, respectively.

(6) September 11th Fund

The Trust and United Way of New York City (United Way) established the September 11th Fund (the Fund) to help respond to the events of September 11, 2001. To assure that monies from the Fund were spent effectively, without undue delays, and in a manner that ensured accountability, they appointed a governing committee (the September 11th Fund Board) and retained a chief executive. The Trust and United Way authorized the Fund to establish grant guidelines and determine distributions from the Fund.

Both The Trust and United Way accepted contributions and processed grants for the Fund. The accompanying consolidated financial statements only show the amounts received and grants processed by The Trust. As of January 1, 2004, The Trust became the Fund's disbursing agent, and remaining balances at United Way were transferred. The Trust processed grants of \$6,336,373 in 2005 and \$49,115,539 in 2004 for the Fund.

independent auditors' report

Distribution Committee of The New York Community Trust and Board of Directors of Community Funds, Inc.:

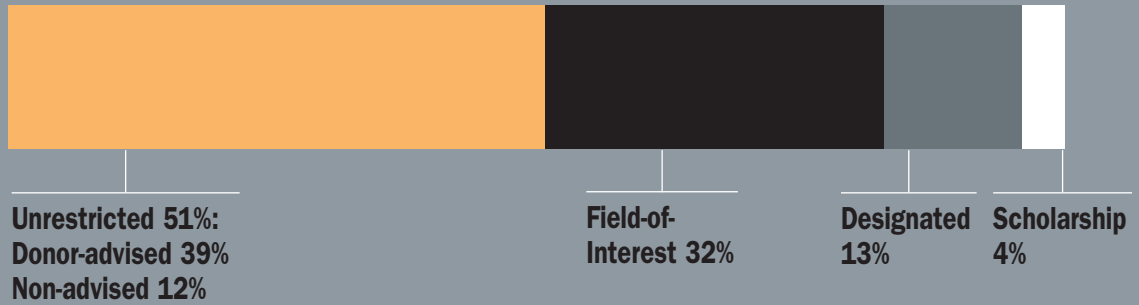
We have audited the accompanying consolidated statements of financial position of The New York Community Trust and Community Funds, Inc. (The Trust) (including its Long Island and Westchester Divisions) as of December 31, 2005 and 2004, and the related consolidated statements of activities and cash flows for the years then ended. These consolidated financial statements are the responsibility of The Trust's management. Our responsibility is to express an opinion on these consolidated financial statements based on our audits.

We conducted our audits in accordance with auditing standards generally accepted in the United States of America. Those standards require that we plan and perform the audit to obtain reasonable assurance about whether the financial statements are free of material misstatement. An audit includes consideration of internal control over financial reporting as a basis for designing audit procedures that are appropriate in the circumstances, but not for the purpose of expressing an opinion on the effectiveness of The Trust's internal control over financial reporting. Accordingly, we express no such opinion. An audit also includes examining, on a test basis, evidence supporting the amounts and disclosures in the financial statements, assessing the accounting principles used and significant estimates made by management, as well as evaluating the overall financial statement presentation. We believe that our audits provide a reasonable basis for our opinion.

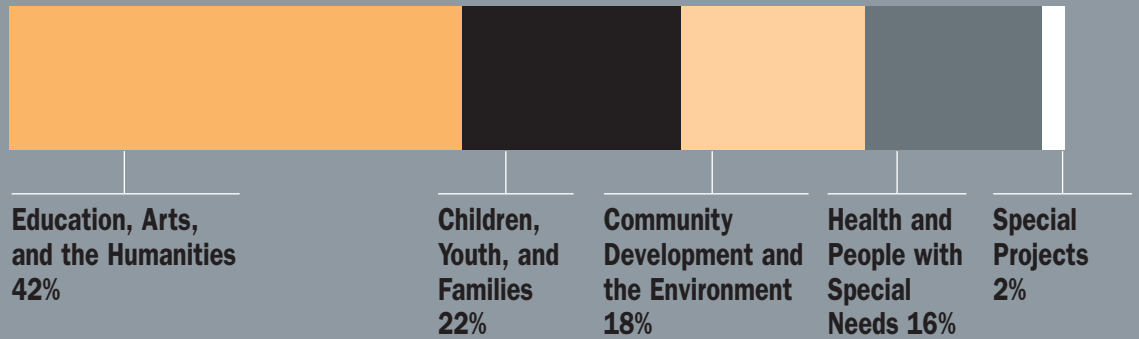
In our opinion, the consolidated financial statements referred to above present fairly, in all material respects, the financial position of The New York Community Trust and Community Funds, Inc. (including its Long Island and Westchester Divisions) as of December 31, 2005 and 2004, and the changes in their net assets and their cash flows for the years then ended in conformity with U.S. generally accepted accounting principles.

financial highlights

ASSETS BY FUND TYPE



GRANTS BY PROGRAM AREAS



TOTAL EXPENDITURES





UNITED COMMUNITY CENTERS

investment committee members

Bruce W. Calvert, Chairman
Chairman Emeritus
Alliance Capital Management

Elizabeth B. Dater
Managing Director
Forstmann-Leff Associates, LLC

Donald R. Kurtz
Former Managing Director
North American Equity Assets
General Motors Investment Management Corp.

Lorie A. Slutsky
President
The New York Community Trust

Lulu C. Wang
Chief Executive Officer
Tupelo Capital Management, LLC

Affiliations for identification purposes only.

governing body

TOP PICTURE, FROM LEFT TO RIGHT, STANDING: ROGER JUAN MALDONADO, ANNE MOORE, ERNEST COLLAZO, BRUCE CALVERT, SAM POLK, DONALDSON PILLSBURY, ROBERT KAUFMAN, LORIE SLUTSKY

SITTING: ANNE SIDAMON-ERISTOFF, CHARLYNN GOINS, NICKI TANNER, ANLA CHENG-KINGDON

BOTTOM PICTURE, CONSULTING MEMBERS FROM LEFT TO RIGHT: CARROLL WAINWRIGHT, BARBARA BLOCK, LULU WANG, BARRY GARFINKEL, WILLIAM EVARTS, BRUCE BALLARD



The governing body consists of 12 members who serve as the Distribution Committee of The New York Community Trust and as the Board of Directors of Community Funds, Inc. It is their responsibility to oversee our organization's operations and grantmaking.

Six members are nominated by civic authorities representing the public: one by the Mayor of the City of New York; one by the Chief Judge of the United States Court of Appeals for the Second Circuit; one by the Chairman of the New York City Partnership and Chamber of Commerce; one by the Chairman of Lincoln Center for the Performing Arts; one by the President of the Association of the Bar of the City of New York; and one by the President of the New York Academy of Medicine. The Trustees' Committee nominates five members, and the President of The Trust is a member by reason of office.

Members serve without compensation. They are selected for their judgment, integrity, and understanding of philanthropic needs. The Committee meets every two months throughout the year; subcommittees meet on a regular basis.

The Finance and Audit Committee monitors the financial operations of The Trust. The Investment Committee (see page 31) establishes asset allocation guidelines, recommends investment advisors and vehicles, and monitors investment performance. The Fund Purposes and Suggestion Review Committee assures that the provisions and intent of each donor's philanthropy are honored, and reviews grants suggested by donors to ensure that they meet our charitable guidelines.

Samuel S. Polk, Chairman

Retired Partner, Milbank, Tweed, Hadley & McCloy; Trustee: Hospital for Special Surgery, Medical Indemnity Assurance Co., Ltd., Collier Foundation, Westchester Land Trust; Former Trustee: Cooper Union for the Advancement of Science & Art, Frederick R. Koch Foundation, Mitsui Trust Company.
Nominated by the Trustees' Committee.

Robert M. Kaufman, Vice Chairman

Partner, Proskauer Rose LLP; Board Chairman, Old Westbury Funds, Inc.; Trustee, Brooklyn Law School; Chairman Emeritus: Fund for Modern Courts, Times Square Alliance; Past President: Association of the Bar of the City of New York, American Judicature Society.
Nominated by the Trustees' Committee.

Bruce W. Calvert

Chairman Emeritus, Alliance Capital Management Corp.; Director: AXA Financial, Michael Wolk Heart Foundation; Trustee, Congregational Church of New Canaan; Trustee Emeritus, Colgate University.
Nominated by the Trustees' Committee.

Anla Cheng-Kingdon

Partner, Centenium Capital; Board of Directors, Facing History and Ourselves; Member: Asian Arts Council—Metropolitan Museum of Art, China Institute, Committee of 100; Former Board Member, The Browning School; Former Chairman, ThinkQuest Advisory Board.
Nominated by the Chairman of the New York City Partnership.

Ernest J. Collazo

Managing Partner, Collazo Carling & Mish LLP; Director: Federal Defenders of New York, Inc., United Hospital Fund of New York; Member: American Bar Foundation (New York Fellow), Federal Bar Council, Federal Bar Council Inn of Court (Master), Advisory Committee to the Rules Committee of the Second Judicial Circuit of the U.S., Labor Advisory Council (to the Health Care Industry); Former Director: Lehman College Foundation, City Bar Fund, VIP Community Services; Former Member, Executive Committee, Association of the Bar of the City of New York.
Nominated by the Chief Judge of the U.S. Court of Appeals for the Second Circuit.

Charlynn Goins

Trustee: Mainstay Funds, Brooklyn Museum of Art; Chairperson, Board of Directors of New York City Health and Hospitals Corporation; Member, Council on Foreign Relations; Former Senior Vice President, Prudential Securities.
Nominated by the Trustees' Committee.

Roger Juan Maldonado

Partner, Balber Pickard Battistoni Maldonado & Van Der Tuin, PC; Member, Mayor's Advisory Committee on the Judiciary; Executive Committee, Association of the Bar of the City of New York; Board of Directors of the Association of the Bar of the City of New York Fund; National Hispanic Business Group; Vice President, Board of Directors, United Neighborhood Houses of New York.
Nominated by the President of The Association of the Bar of the City of New York.

Anne Moore, M.D.

Professor of Clinical Medicine, Joan & Sanford I. Weill Medical College of Cornell University; Attending Physician, New York Presbyterian Hospital; Trustee, New York Academy of Medicine; Former Director, American Board of Internal Medicine; Past President, New York Metropolitan Breast Cancer Group.
Nominated by the President of The New York Academy of Medicine.

Donaldson C. Pillsbury

Executive Vice President and Worldwide General Counsel, Sotheby's Holdings, Inc.; Trustee, Robert College of Istanbul; Vice Chairman, The Chamber Music Society of Lincoln Center.
Nominated by the Chairman of Lincoln Center for the Performing Arts.

Anne P. Sidamon-Eristoff

Chairwoman Emerita, American Museum of Natural History; Director: Black Rock Forest Consortium, God Bless America Fund, Greenacre Foundation, Highland Falls Public Library, Storm King Art Center; Hon. Director, World Wildlife Fund/US; Former Director: Girl Scout Council of Greater New York, Hudson River Foundation, Museum of Modern Art, Scenic Hudson; Former Chairman, The New York Community Trust.
Nominated by the Mayor of the City of New York.

Lorie A. Slutsky

Director, The New York Community Trust; President: Community Funds, Inc., The James Foundation; Secretary, Trustees' Committee, The New York Community Trust; Chairman, BoardSource; Trustee, The New School; Director, Alliance Capital Management LLP; Former Member: Board of Directors, Council on Foundations (Chairman), The Foundation Center (Vice Chairman), Hispanics in Philanthropy; Trustee Emerita, Colgate University.
Member by reason of office.

Estelle (Nicki) Newman Tanner

Director, Oral History Project, UJA-Federation of Jewish Philanthropies of New York; Chair: WNYC Radio, Jewish Women's Archive; Trustee: Hebrew Union College-Jewish Institute of Religion, UJA-Federation of Jewish Philanthropies of New York; Trustee Emerita, Colonial Williamsburg Foundation, Wellesley College.
Nominated by the Trustees' Committee.

CONSULTING MEMBERS

Bruce L. Ballard, M.D.

Associate Dean for Student Affairs & Equal Opportunity Programs and Associate Professor of Clinical Psychiatry, Joan & Sanford I. Weill Medical College of Cornell University.

Barbara H. Block

Board Member: Lincoln Center for the Performing Arts, Lincoln Center Institute, Music From Marlboro, Usdan Center for the Performing Arts, George Gustav Heye Center—National Museum of the American Indian.

William M. Evarts

Senior Counsel, Pillsbury Winthrop Shaw Pittman, LLP; Former Chairman, The New York Community Trust.

Charlotte Moses Fischman

Partner, Kramer Levin Naftalis & Frankel LLP.

Barry H. Garfinkel

Of Counsel, Skadden, Arps, Slate, Meagher & Flom.

Judah Gribetz

Counsel, Bingham McCutchen LLP.

Carroll L. Wainwright, Jr.

Retired Partner, Milbank, Tweed, Hadley & McCloy.

Lulu C. Wang

Chief Executive Officer, Tupelo Capital Management LLC.

suburban. divisions

With the belief that grantmaking is most effective when it is done locally, The Trust established divisions that reach out to the greater metropolitan area: the Westchester Community Foundation, founded in 1975, and the Long Island Community Foundation, founded in 1978.

Each is guided by a board of advisors composed of local community leaders and staffed by people expert in grantmaking and donor service. As part of The Trust, Long Island and Westchester enjoy our investment management, legal, financial, and accounting services.

For donors who wish to contribute to charities in these communities, our suburban divisions offer the best of all worlds: they combine sensitivity to local concerns with the economies of scale and expertise of a large organization.

Funds in each division are listed on the following two pages.

LONG ISLAND COMMUNITY FOUNDATION

The Elias Hicks House
1740 Old Jericho Turnpike
Jericho, NY 11753
(516) 681-5085
www.licf.org

Board of Advisors:

Raymond C. Radigan, Chairman
John D. Miller, Vice Chairman
Fred Bornstein
Lawrence E. Davidow
Patrick J. Foye
Roslyn D. Goldmacher
Amy Hagedorn
Robert M. Hoyte
Aldustus E. Jordan III
Abraham Krasnoff
William T. Martin
Marge Rogatz
Betty Schlein
Pearl F. Staller
Scott A. Williams

WESTCHESTER COMMUNITY FOUNDATION

200 North Central Park Avenue
Suite 310
Hartsdale, NY 10530
(914) 948-5166
www.wcf-ny.org

Board of Advisors:

Raymond M. Planell, Chairman
Gustavo Arnavat
Manuel Boado
Jacqueline L. Dunbar, M.D.
Denise S. Farrell
Debra Shaw Hess
Rosia Blackwell Lawrence
Judith Z. Matson
Matthew G. McCrosson
Katherine C. Moore
Ralph E. Penny
Jennifer M. Rutledge
Elaine Schroeder
Kathy Shea
Jamie Shenkman
Alan Sorkin
Sabin C. Streeter



**PLANNED PARENTHOOD OF
NASSAU COUNTY**

Mark Fischgrund Memorial Fund (2003)
 Walter & Sandra Fish Charitable Fund (1997)
 Forman Fund (2002)
 *Samuel Francis Fund (2005)
 *Franck Family Fund (2005)
 Anne & Frank Freeman Fund (1997)
 Robert C. Frey Fund (1999)
 Fund for the Future of Long Island Women & Girls (1997)
 Fund for Innovative Community Programs on Long Island (1985)
 Funders Collaborative for Early Care and Education on Long Island (2002)
 *Richard H. & Jean E. Gaebler Family Fund (2005)
 Glenn Gerrato Scholarship Fund (2001)
 Jerry & Franette Gil Family Fund (1999)
 Neil Giske Memorial Scholarship Fund (1985)
 *Jeanne Going Memorial Fund for Ovarian Cancer Research (2005)
 Selma Greenberg Fund (1997)
 Greentree Foundation Fund (2003)
 Grundman Memorial Scholarship Fund (1990)
 Horace & Amy Hagedorn Long Island Fund (1996)
 *Horace Hagedorn Memorial Fund (2005)
 Kristy Lyn Haley Memorial Fund (2000)
 Hand & the Spirit Fund (1999)
 F. & M. Harris Family Fund (2001)
 Robert E. & Barbara W. Harrison Fund (1997)
 Helen's Fund (1998)
 E.B. Hubbard Fund (2002)
 Julie Hunnewell Fund (1987)
 Alma D. Hunt/VCM L.I. Fund (1997)
 Idie Fund (2000)
 *Susan Isaacs & Elkan Abramowitz Charitable Fund (2005)
 Douglas Jackson Memorial Scholarship Fund (1996)
 Berenice & Herman Jacobs Family Fund (1997)
 *Marie J. Jensen Scholarship Fund (2005)
 Lucille S. & Martin E. Kantor Fund (1993)
 Edith R. Karel Fund (1998)
 Karish Education Fund of the Horticultural Alliance of the Hamptons (2000)
 David & Dale Karp Family Charitable Fund (2003)
 Kenneth L. & Veronica K. Katz Fund (1999)
 Kenneth L. & Veronica K. Katz Advisory Fund (1999)
 Leo & Freda Keller Memorial Fund (2000)
 Kids Making a Difference Fund (2000)
 Morton L. Kimmelman Fund (2001)
 Kingfisher Fund (1998)
 David & Paula Kirsch Family Fund (2004)
 Andrea B. & Peter D. Klein Fund (1999)
 Beverly & Harvey Klein Fund (2001)
 Krasnoff Family Fund (1985)
 Patricia Kucinski Memorial Fund (2003)
 *Arthur H. Kunz Memorial Fund (2005)
 Ed & Lee Lawrence Fund (1988)
 Donna Levien Memorial Fund (2004)
 Levin Family Fund (1997)
 J & E Levy Fund (1996)
 LICF Operating Fund (1989)
 LITAC Fund (1989)

LONG ISLAND COMMUNITY FOUNDATION

Dennis P. Angermaier Memorial Lifeguard Scholarship Fund (2002)
 Alexander Baldwin Memorial Scholarship Fund for Massapequa High School (2000)
 *Jason & Susan Barnett Family Fund (2005)
 Jean Bellia Fund for Nursing Excellence (2004)
 Stanley & Marion Bergman Family Charitable Fund (1996)
 Willa & Robert Bernhard Fund (1997)
 Mollie Biggane Melanoma Fund (2000)
 Ruby & Michael Bornstein Memorial Fund (1978)
 Captain William F. Burke, Jr. Memorial Fund (2003)
 Capell Family Fund (2001)
 Richard M. Caproni Memorial Scholarship Fund (2001)
 Helene & Richard Cepler Family Fund (2000)
 Chakiryan Family Fund (2002)
 Arthur A. Chaplin GSB Fund (2001)
 Charity Society Fund (2000)
 Charlie's Long Island Fund (1985)
 Childcare Assistance Fund (1996)
 George J. Conklin Scholarship Fund (1989)
 Ann Caroline Corrody Fund (1999)
 Cumulus Long Island Fund (2003)
 *Rose D'Arpino Scholarship Fund (2005)
 Davidow Elderly Community Assistance Fund (1996)
 *Domino Family Scholarship Fund (2005)
 *Michael & Elizabeth Domino Family Fund (2005)
 Percy Douglass Memorial Education Fund (1985)
 Eiber Family Fund (2000)
 In Memory of Elissa Fund (2004)
 ENEE Philanthropic Fund (1994)
 Martha C. Entenmann Scholarship Fund (1999)
 *Farmer's Daughter Charitable Fund (2005)
 Tiffani Bea Feldman Children's Fund (2000)
 Susan, Karen & Diane Lash Ferber Charitable Fund (1996)

Marian & William Littleford Fund (1993)
 Debra Lobel/Beverly Dash Fund (2004)
 Long Island Fund for the Arts (1984)
 Long Island Fund for Education (1987)
 Long Island Fund for Youth Programs (1987)
 Long Island Nonprofit Crisis Fund (2003)
 Long Island Unitarian Universalist Fund (1992)
 John F. Loverro Memorial Fund (2004)
 Roselle Patricia Luciano Literacy Fund for Women (1996)
 Kendall Madison Leadership Fund (1995)
 Mancino Family Fund (2003)
 William T. & Lynn Steppacher Martin Fund (2001)
 Massapequa Community Fund (2001)
 *Michael & Paula Maturo Family Fund (2005)
 Helen P. McIntyre Fund (1986)
 Helen P. & Randall P. McIntyre Fund (1998)
 Alan P. Mendelsohn Memorial Scholarship Fund (1999)
 Shelley Metzenbaum & Steven Kelman Family Fund (1999)
 Byron T. Miller Memorial Fund (1992)
 John D. Miller Fund (2001)
 Millie Fund (2000)
 William E. Mintzer Memorial Fund (1999)
 Miracle-Gro Fund (2001)
 Joseph & Marion L. Mitola Family Fund (1999)
 Alan Morton Foundation Fund (1998)
 Michael Moverman Memorial Fund (1998)
 Nash Fund (1996)
 Nassau County Red Cross Fund (1998)
 Nassau/Suffolk Fordham Law Alumni Scholarship Fund (1991)
 NCJW South Shore Section Community Fund (1995)
 North Country Community Association Fund (2002)
 North Fork Fund (2003)
 Northrop Grumman Endowment Fund for L.I. Women & Girls (1996)
 *Diane J. Owen Memorial Fund (2005)
 Sylvia & Morris Paley Fund (2002)
 Paul's Fund (2002)
 Henry D. Pearson, Jr. Memorial Fund (1992)
 Peconic Stewardship Fund (1984)
 Perry Persichilli Memorial Fund (1996)
 James & Margaret Philbin Scholarship Fund (2003)
 Harriet B. & Edward Everett Post Fund (1986)
 Elizabeth Pritzker Endowment Fund (1985)
 *Raymond C. & Diane F. Radigan Fund (2005)
 Rhodebeck Long Island Fund (1998)
 Richards Family Fund (1987)
 Charlotte S. & Richard D. Rockwell Fund (1999)
 Rose Fund (1998)
 Judith Rubertone Fund (1987)
 Cheryl & Stephen Rush Fund (1999)
 Saltzman Fund (1987)
 Arnold Saltzman Family Charitable Fund (2001)
 Joan & Arnold Saltzman Fund (1989)
 Sidney Schiffman Fund (1996)
 Betty & Richard Schlein Fund (1997)
 Schneidman Family Fund (2000)
 Caroline & Sigmund Schott Fund (1999)
 John S. Schrader Memorial Fund (2004)
 Schwartz Family Fund (1991)
 Selig Fund (1991)
 Samuel & Stella Seligsohn Fund (1996)
 Jerry & Cecile Shore Fund (1995)
 Meredyth H. Smith Charitable Fund (1997)
 Colonel William Smith Foundation (1984)
 E. & R. Smits Fund (2001)
 Song of Songs Fund (2002)
 Staller Scholarship Fund (1987)
 Erwin P. & Pearl F. Staller Charitable Fund (1992)
 Adam E. Stark Memorial Scholarship Fund (2001)
 Nancy Steinman Fund (2003)
 Helen, Emily & Margaret Stevens Fund (2004)
 Frances R. Storrs Fund (2000)
 Sunida Fund (1998)
 Carol & Jim Swiggett Fund (1997)
 Taca Family Fund (1996)
 Ruth Saltzman Taishoff Fund (1996)
 Gail Talent Memorial Fund (2003)
 Stuart & Jill Tane Charitable Fund (1997)
 James & Marie Taormina Fund (1999)
 Tealison Fund (1998)
 Tealison Two Fund (2001)
 United Way of Long Island's Human Care Fund (1992)
 Joseph Vigilante Fund for the Adelphi School of Social Work (2000)
 Phyllis S. Vineyard Fund (1996)
 Vishnick Family Charitable Fund (2001)
 Voices from the Heart Fund (1997)
 *Amah Vought Memorial Health Fund (2005)
 WAC Lighting Fund (2004)
 Elizabeth & Eugene Wadsworth Charitable Fund (1999)
 Hilda S. Weiser Memorial Fund (1998)
 Charles J. Williams Fund (1986)
 Work Long Island (2003)

WESTCHESTER COMMUNITY FOUNDATION

Apoyo Fund (2002)
 Ardee Fund (1994)
 Arfa Family Fund (1997)
 Ascher Fund (1999)
 Linda Ashear Fund (2001)
 Barringer-Spaeth Fund for Change (2002)
 Joan Bartels Memorial Fund (1997)
 Beverly Bender Fund (2000)
 Helen Benedict Fund (2000)
 Howard & Grace Benedikt Fund (2002)
 *Carol Berger Scholarship Fund (2005)
 Richard A. Berman Fund (2004)
 K. M. Bialo Family Fund (1986)
 Bianco Family Fund (2003)
 Blecher Family Fund (1986)
 Albertina Bloom Memorial Fund (1985)
 Samuel & Beatrice Marks Bloom Memorial Fund (1998)
 Blumer Family Fund (1998)
 Jack Brennan Fund (2002)
 Buerger Fund (2001)
 *Elizabeth G. Butler Angel's Fund (2005)
 Tony Carlucci Scholarship Fund (1999)
 Jesse L. Carroll, Jr. & Judith B. Carroll Fund (1986)
 H. M. & T. Cohn Fund (1977)
 Larry Cole Memorial Fund (2003)
 Michael A. Correa Memorial Fund (2002)
 Nancy & Robert DeLigter Boy Scout Memorial Fund (1991)
 Michele & Concetta DeRosa Fund (2000)
 Alyson & Parker Drew Fund (2000)
 Linda A. & James H. Ellis Fund (1999)
 *Marion C. & James E. Enright Scholarship Fund (2005)
 Ernie, Louise & Jeffrey Early Childhood Fund (1995)
 Esplanade Fund (2003)
 Falk Family Fund (1986)
 Celia Malbin Feinstein Fund (1992)
 Arnold E. & Olga C. Feldman Fund (2003)
 Virginia Franklin Journalism Scholarship Fund (2004)
 Peggy Friedman Memorial Fund (1989)
 Fund for Westchester's Environment (2001)



NEIGHBORHOOD HOUSE

Fund for Westchester's Future (1987)
 Gallagher Family Charitable Fund (1999)
 Charles Gamper Fund (1985)
 J.F. & M. Gelband Fund (1995)
 Bella & Reuben Gilbert Fund (1992)
 Lloyd & Lonya Gilbert Fund (1991)
 Glassberg Family Fund (1997)
 Rachel Greenstein Memorial Fund (1988)
 Carol & Frank Headley Family Fund (1996)
 Jeanne & Lee Heffner Fund (2000)
 John & Marilyn Heimerdinger Fund (1994)
 Russell Hexter Filmmaker Fund (1997)
 Julian H. Hyman Memorial Fund (1985)
 Alice & Warren Ilchman Fund (2000)
 IZARD Fund (1997)
 Jade Fund (1999)
 Paul & Barbara Jenkel Fund (1998)
 Edwin Irving Johnson Scholarship Fund (1985)
 Janet A. Johnson Scholarship Fund (2003)
 *Margaret Jourdan Fund (2005)
 Kadejay Fund (1998)
 Kimerling Career Development Fund (2000)
 Stephanie H. & Robert A. King Fund (1994)
 Learning Center Fund (1994)
 Dorothy & John Lebor Fund (1999)
 James L. Leinwand Fund (1998)
 David F. & Dorothy W. Linowes Fund (1999)
 Linville Fund (1993)
 William J. & Helen Z. Lippincott Fund (1994)
 James M. Lober & Lois B. Lober Fund (1998)
 Karin Lopp Fund (1998)
 Elizabeth Lorentz Fund (1986)
 Lester & Helen Levinthal Lyons Fund (1994)
 John F. Maloney Memorial Fund (1998)
 Patrick J. McNeill Scholarship Fund (1997)
 Menzies Fund (2002)
 Middleton Family Fund (2001)
 Asa Uyeda Mitsudo & Sumi Lynn Koide Memorial Fund (1996)
 David & Katherine Moore Family Foundation Fund (2000)
 *Katherine C. & David E. Moore Fund for Community Development (2005)
 Nathan Moscow Fund (1985)
 Munson Family Fund (2000)
 David & Rhoda Narins Family Fund (1999)
 Eda & Stanley Newhouse Fund (1983)
 James L. Newhouse Fund (1986)

Thomas J. & Margaret Lynch O'Connor Scholarship Fund (1994)
 Olmezer Westchester Fund (1998)
 Pammy Fund (1989)
 Passionist Fund (1995)
 Lawrence R. Jr. & Thelma Dale Perkins Fund (For Minority Education) (1993)
 Perry Family Fund (1988)
 Roger Perry Memorial Fund (1999)
 Roger & Isobel Perry Memorial Fund (2000)
 Pisacano Family Fund (1995)
 Pottinger Fund (1994)
 Sal J. Prezioso Fund for Westchester's Future (2001)
 Putnam Fund (1999)
 Muriel L. & Stephen B. Randolph Fund (2004)
 George E. & Elizabeth A. Reed Fund (2001)
 Reiman Brothers Fund (1999)
 Elsie Reinhart Memorial Fund (1991)
 Nathan Rosen Memorial Fund (1996)
 Vito & Diana Russo Fund (1988)
 Elaine & Edmund Schroeder Fund (2002)
 Dr. Lester J. Schultz Memorial Fund (1984)
 Robert & Lynne Schwartz Fund (1986)
 Shea Family Fund (2004)
 Dorothy F. & William B. Shore Fund (2000)
 Carl Slater Memorial Fund (1998)
 Bradford & Pamela Smith Charitable Fund (2000)
 Karena Somerville AWC Scholarship Fund (1992)
 Dr. John B. Sommi Fund (2003)
 Andrew Stewart Memorial Fund (1999)
 Edward Storck Memorial Scholarship Fund (1996)
 Sturmer Family Fund (1996)
 Sullivan Family Fund (1994)
 James A. & Katherine D. Sutton Fund (1999)
 Martin Tackel & Abbe Raven Family Fund (1998)
 Alfonso Tapia & A. L. Rose Memorial Fund (1994)
 Technical Support Fund (1998)
 Threerandomwords Fund (2003)
 Jodie Torigian Charitable Fund (2000)
 Triantafillu Fund (1983)
 W. Lee Tuller Memorial Fund (1983)
 W. Lee Tuller Memorial Education Fund (1983)
 Arno & Peppi Ucko Family Fund (1998)
 *Emily & Harold E. Valentine & Evelyn Gable Clark Scholarship Fund (2005)
 Wallace Westchester Fund (1988)
 Bernice & Irwin Warshaw Fund (1990)
 Nicholas C. Wasicsko Scholarship Fund (1993)
 Westchester Fund for Women & Girls (1992)
 Westchester Health Fund (2003)
 Westchester Opportunity Fund (1993)
 Westchester Poetry Fund (2000)
 Westchester Wilderness Walk Fund (2001)
 Frank E. Wigg Charitable Fund (1993)
 Wilstock Fund (1994)
 Evelyn G. Zamboni Fund (1986)
 Madeline & Sanford S. Zevon Fund (1995)

*Fund started in 2005



MARTIN J. G. GLYNN,
CHAIRMAN,
TRUSTEES' COMMITTEE

trustee banks

In 1923, the banks of New York City envisioned the type of philanthropic organization that could best meet the changing needs of this community.

It would be set up to give wealthy people and those of moderate means an equal opportunity to accomplish their philanthropy within a flexible framework. The charitable funds they created would be permanently secure. The organization's governing body—an impartial and changing committee of New York citizens chosen for their understanding of philanthropic needs—would oversee the selection of charitable beneficiaries.

This was the beginning of The New York Community Trust. Today thirteen banks and trust companies have adopted the *Resolution and Declaration of Trust Creating "The New York Community Trust."* The representatives of these financial institutions constitute the Trustees' Committee, and each bank is authorized to receive funds in trust for The New York Community Trust.

TRUSTEE BANKS

Bank of America

Brian Moynihan, President, Wealth & Investment Management

Alternates: Rena Desisto, Regional Marketing Development Executive,
Walter Dillingham, Director, Senior International Sales Representative

The Bank of New York

Thomas A. Renyi, Chairman & CEO
Alternate: John M. Dowd, Senior Vice President & Chief Trust Officer

Bessemer Trust Company, N.A.

John A. Hilton, Jr., President & CEO
Alternate: William H. Forsyth, Jr., Managing Director & Senior Fiduciary Counsel

Brown Brothers Harriman Trust Company

Donald B. Murphy, Chairman & CEO
Alternate: William H. Mears, Jr., Executive Vice President

Citibank, N.A.

Charles Prince, Chairman, Citigroup Inc.
Alternate: Daniel M. Fitzpatrick, Managing Director & CEO, Citigroup Trust

Deutsche Bank Trust Company, N.A.

Seth Waugh, Chief Executive Officer
Alternate: Susan Hartley, Managing Director and Head, Trust and Estate Services

Fiduciary Trust Company International

Anne M. Tatlock, Chairman of the Board & CEO
Alternate: Gail E. Cohen, Esq., Executive Vice President & General Trust Counsel

HSBC Bank USA

Martin J. G. Glynn, President & CEO
Alternate: Gerard F. Joyce, Jr., Senior Vice President

Lehman Brothers Trust Company

Robert Laughlin, President
Alternate: Joseph F. Collins III, Senior Vice President

Merrill Lynch Trust Company, FSB

Christian G. Heilmann, Chairman & CEO
Alternate: David Ratcliffe, Senior Vice President

JP Morgan Chase Bank

Jamie Dimon, Chief Executive Officer
Alternate: Paula M. Baker, Managing Director

The Rockefeller Trust Company

Elizabeth P. Munson, President
Alternate: James M. Mulvaney, Senior Vice President

United States Trust Company of New York

Peter K. Scaturro, Chief Executive Officer
Alternate: Linda Franciscovich, Head of Philanthropic Advisory Services

staff of the trust

T: 212-686-0010 F: 212-532-8528

www.nycommunitytrust.org

Office of the President

Lorie A. Slutsky, <i>President</i>	257
Elba Linares Griffin, <i>Assistant to President</i>	235
James R. Dumpson, Ph.D., <i>Senior Consultant</i>	253
Ani F. Hurwitz, <i>Director of Communications</i>	224
Grant Moser, <i>Communications Assistant</i>	234

Office of the General Counsel

Jane L. Wilton, <i>General Counsel</i>	379
Kathleen Wecht, <i>Executive Assistant</i>	322

Donor Relations

Robert V. Edgar, <i>Vice President</i>	373
Gay Young, <i>Director</i>	377
Janet Hollander, <i>Grants Investigator</i>	535
Anne M. Nally, <i>Grants Administrator</i>	301

Finance & Investment

Kit Conroy, <i>Chief Financial Officer</i>	424
Mary Z. Greenebaum, <i>Chief Investment Officer</i>	464
Heidi Hotzler, <i>Controller</i>	444
Jannette Andaluz, <i>Financial Assistant</i>	429
Lora Rhames-Davis, <i>Accountant</i>	476
Jacqueline Sacks, <i>Manager, Trust Accounting</i>	411
Raymond P. Salibur, <i>Investment Administrator</i>	455
Wen Weng, <i>Manager, Budgets & Special Projects</i>	499

Administration

Mercedes M. Leon, <i>Vice President</i>	265
Marc D'Alessandro, <i>IT Administrator</i>	340
Catherine Johnson, <i>Administrative Assistant</i>	276
Joan Reedy, <i>Benefits Administrator</i>	256
Ayanna Russell, <i>Office Manager</i>	227
Evelyn Shapero, <i>Receptionist</i>	0
Tilackdharry Shievkumar, <i>Office Assistant</i>	667
Tonia Smallwood, <i>Records Assistant</i>	636

Grants and Special Projects

Joyce M. Bove, <i>Senior Vice President</i>	552
Judith Lopez, <i>Executive Assistant</i>	554
Liza Lagunoff, <i>Grants Administrator</i>	559

Children, Youth & Families

Roderick V. Jenkins, <i>Program Officer</i>	527
Patricia A. White, <i>Senior Program Officer</i>	579

Community Development & the Environment

Patricia Jenny, <i>Program Director</i>	201
Patricia Swann, <i>Program Officer</i>	530
Nioka S. Young, <i>Program Officer</i> (until June 2006)	575

Education, Arts & the Humanities

Leah M. Krauss, <i>Senior Program Officer</i>	520
Jane R. Stern, <i>Program Director</i>	557

Health & People with Special Needs

Irfan Hasan, <i>Program Officer</i>	573
Len McNally, <i>Program Director</i>	556

Nancy DeKoven, <i>Administrative Assistant</i>	525
Sheila Dinkins, <i>Administrative Assistant</i>	553
Laurette Gresler, <i>Executive Assistant</i>	555

DIVISIONS

Long Island Community Foundation

T: 516-681-5085 F: 516-681-5090

Suzy D. Sonenberg, *Executive* 223

For a complete staff list, please visit www.licf.org.

Westchester Community Foundation

T: 914-948-5166 F: 914-948-5197

Catherine Marsh, *Executive* 23

For a complete staff list, please visit www.wcf-ny.org.

funds in 2005

THE NEW YORK COMMUNITY TRUST COMMUNITY FUNDS, INC.

A

*2005 Charitable Trust Fund (2005)
Janice E. Abbott Scholarship Fund (1999)
Abdalla Stern Fund (2003)
Jane Schwab Abel & Elise Schwab Clemenger Memorial (1946)
Jan & Stefan Abrams Fund (1997)
A.B.Y. Fund (1960)
Ackman Family Fund (1997)
Acorn Foundation Fund for Beautification in Memory of Barbara Foster Vietor (2004)
Acorn Foundation Fund for History in Memory of Alexander Orr Vietor (2004)
Hall Adams Fund (1972)
John & Laurie Adams Fund (2004)
Adel & Leffler Families' Fund for Queens (1993)
Frederica M. & Morton L. Adler Trust (1941)
Adopt-a-Monument Fund (1987)
M. Bernard Aidinoff Fund (1986)
M. Bernard Aidinoff & Elsie V. Aidinoff Fund (1998)
Seth G. Aidinoff Fund (1986)
Akabas Family Fund (1986)
Albin Family Arts Fund (1999)
Barbara Albisser Memorial Fund (1981)
Oakey L. & Ethel Witherspoon Alexander Fund (1977)
Alexandra Fund (1970)
Allegra-Tanner Fund (1995)
Robert Mack Allen & Wendel Fentress Ott Fund (1989)
AllianceBernstein Foundation Fund (1998)
Franz & Marcia Allina Fund (1994)
Alouette Fund (1993)
B. Altman Fund (1985)
Altschul Family Fund (1980)
Altschul Overbrook Fund (1994)
Arthur Altschul Memorial Fund (2002)
Arthur G. Altschul, Jr. Charitable Fund (1996)
Emily H. Altschul Charitable Fund (2002)
Elizabeth & Peter Altwater Fund (1974)
American Seamen's Friend Society Designated Fund (1986)
American Seamen's Friend Society Discretionary Fund (1986)
Ananouri Fund (1998)
Anbinder Family Charitable Fund (2003)
J. R. Anderson Fund (1981)
*Patricia Anderson Fund (2005)
Eileen & William Araskog Charitable Fund (2001)
Arc of Circumstance Fund (1978)
G.W. Archer Fund (2001)
Joseph Arena Charitable Fund (1995)
Walter & Marsha Arnheim Fund (1986)
Esther Jean Arnhold Fund (1966)
Arundel Fund (1988)
Marcia Ashman Fund for Children (1999)
Robert R. Asiel Memorial Funds (1972)
Astor Fund for Public School Libraries (1997)
Auburn Citizen Fund (1999)

B

B Fund (1990)
Babbitt Family Fund (1990)
Babsan Fund (1992)
William M. Backer Fund (1985)
Backman-Niesz Fund (1999)

Isabelle Bacon Fund (1985)
Baer Family Fund (1989)
Ellen & Henry Baer Fund (1986)
Honorable & Mrs. Harold Baer Fund (1989)
Lee Bailey Fund (1991)
S. Prentiss Bailey Fund (1960)
Baird Family Fund (1987)
Baker Family Fund (2003)
Allyson Maya Collazo Baker Fund (1984)
Fern Ann Ballard Memorial Fund (1986)
Dr. Holly M. Bannister & Douglas L. Newhouse Fund (1984)
Peleg S. Barber Fund (1960)
Ruth Plofsky Barish & Irving Barish Fund (1996)
Barns Fund (1971)
Parker W. Barnum Fund (1979)
William & Françoise Barstow Foundation No. 1 (1931)
William & Françoise Barstow Foundation No. 2 (1959)
Christopher S. Bartels Fund (1998)
Katherine N. Bartels Fund (1998)
McDonald C. Bartels Fund (1998)
Todd C. Bartels Fund (1998)
Harriett M. Bartlett Funds (1987)
Arthur L. Baruch & Rosalie K. Baruch Fund (1979)
Baudo-Sillerman Scholarship Fund (1989)
BBDO Minority Education & Training Fund (2000)
Alice D. Beal Trust (1955)
Raymond R. Beatty Scholarship in Memory of Andrew Wilson (1984)
Hubert Park Beck Literacy Fund (2004)
Bernadine Becker Commemorative Trust (1984)
Ruth Bedford Fund (1963)
Beech Fund (1975)
David Bell Fund (1998)
Bellevue Nursing Committee Fund (1976)
Eleanor Robson Belmont Fund (1980)
*Selim & Luna Benardete Charitable Fund (2005)
Lillian Z. Bender Fund (2002)
Claire B. & Lawrence A. Benenson Fund (1987)
Herbert & Edythe F. Benjamin Fund (1976)
Bento Fund (2004)
*Maureen Duffy Benziger Fund (2005)
Andrew N. & Gail D. Berg Fund (1999)
Alexander Berger Memorial Fund (2004)
*Edward Bergman Fund (2005)
*Paul Bergman Fund (2005)
*Sarah & Paul Bergman Youth Empowerment Fund (2005)
Daniel Bergstein Memorial Scholarship Fund (2002)
Berkshire Fund (2000)
Viola W. Bernard Fund for Psychosocial Health (1993)
T. Roland Berner Fund (1972)
Charles L. Bernheimer Fund (1974)
Theresa E. Bernholz Fund (1924)
Sylvia Bernstein Fund (1994)
Richard Case Berresford Fund (1997)
William H. Berri Funds (1966)
Frank Besau & Pauline Besau Wamsganz Fund (1995)
Betlor Foundation (1978)
Beverly Hills Fund (1972)
BGM Fund (1971)
June R. & Jonathan Bingham Fund (1980)
Henry Birnbaum Fund (2000)
Gladys A. Bishop Memorial Fund (1987)
Anne & Walter C. Bladstrom Philanthropic Fund (1988)
Richard & Margaret Blanchard Fund (1983)

Nancy & Robert S. Blank Fund (2003)
E.H.R. & N.M. Blitzer Fund (1984)
*Blitzer Family Fund (2005)
*Amy Bloch/Gregory Horowitz Fund (2005)
Lida & David Bloom Fund (1989)
Robin Bloom Fund (1991)
Blum Family Fund (1990)
Sidney & Elaine Blumenthal Fund (1980)
Jesse Smith Blydenburgh & Josephine Vail Blydenburgh Fund (1958)
Ernst P. Boas Memorial Fund (1955)
Alice Boerner Fund (1988)
Bohemia Fund (1971)
Bolin Fund (1986)
Peter A. Bonanni Scholarship Fund (1996)
M. Alida Bonyngé Memorial Fund (1940)
Lillian G. Booth Fund (1976)
Janet & James Bostany Memorial Fund (1999)
Charles Bouman Charitable Trust (1977)
Bove Fund (1986)
John Perry Bowditch Memorial Fund (1956)
Clothilde de Veze Bower Fund (1989)
Philip & Suzanne Bowers Charitable Contribution Fund (2003)
George T. & Francele Boyer Fund (1976)
Bradford Fund (1986)
William B. & Jane Eisner Bram Fund (1995)
William M. Bramwell, Jr. Fund (1995)
Brause Fund (1986)
Barry & Geraldine Brause Fund (1986)
R. S. Brause Fund (1986)
Roberta Brause Fund (1986)
Catherine & Robert Brawer Fund (1996)
Annie Grant Breath Memorial Fund (1939)
Lyn Brillo & Mark Sonnino Fund (1997)
Brivio Family Fund (2003)
Beatrice & Douglas Broadwater Fund (1986)
Edward Brodsky Fund (1997)
Ann Loeb Bronfman Fund (1995)
Brooklyn Fireman's Medal Fund (1981)
Dee & Dickson G. Brown Fund (1986)
Meredith & Sylvia Brown Fund (2004)
Adon H. Brownell Memorial Fund (1985)
Browning Fund (1998)
Edward W. Browning Fund No. 2 (1969)
Brownstein Family Fund (1995)
Betty E. Brugger Fund (1986)
William H. & George R. Brunjes Memorial Fund (1988)
Barry R. Bryan Fund (1986)
May Evans Bryant Fund (1989)
BTW Fund (1973)
Emily G. Buck Fund (1994)
Alexandru & Sonia Bunesco Fund (1993)
Walter & Martha Burchard Family Fund (1988)
Richard A. Burgheim Fund (1999)
Burkhart Fund (2004)
Frantzes D. Burkhart Fund (1960)
William H. Burkhart Fund (1960)
Burks Family Fund (2003)
Burnes Fund (1993)
Burnett Family Fund (2004)
John U. & Minnie M. Burt Inter Vivos Fund (1974)
John U. & Minnie M. Burt Testamentary Funds (1974)
Ernest Brooks Burton Fund (2003)
William B. Butz Memorial Fund (1999)

Patrolman Edward R. Byrne Substance Abuse Fund (1988)
Monsignor Harry J. Byrne Scholarship Fund (1998)

C
Jean C. Caldwell Fund (1950)
Patricia A. Caldwell Fund (2002)
Douglas Campbell, Jr. Fund (1984)
Frances T. Campbell Fund (1959)
Cannon Educational Fund (1981)
*Cantor Family Fund (2005)
Ralph & Stella Caporale Fund (1995)
Carey Family Fund (1995)
Carillon Fund (1998)
Carlson Fund (1994)
Fred G. Carlson Fund (1995)
Carnegie Corporation Fund No. 1 (1936)
Carnegie Corporation Fund No. 2 (1936)
Carolina Fund (1986)
Alys Sinclair Carreau Memorial Fund (1929)
Carson Family Charitable Trust Fund (1985)
Sybil Carter Memorial (1930)
Cashin Family Fund (1989)
Bonnie Cashin Fund (2002)
*Catalyst Fund (2005)
Cecelia Trust Fund (1996)
CFDA-Vogue Initiative/New York City AIDS Fund (1991)
Ronald & Carole Chaimowitz Fund (1995)
David & Miriam Chalfin Fund (1985)
*Maria Bowen Chapin Scholarship Fund (2005)
Chapman Fund (2000)
Charlie Company Scholarship Fund (1985)
Charlie's Fund (1975)
Gerald L. Chasin Fund (1986)
Richard & Ellen Chassin Charitable Fund (2000)
Chatham Fund (1984)
Patrick S. Cheng & Michael J. Boothroyd Fund (2000)
Herbert & Phyllis Chernin Fund (1996)
Marjorie F. Chester Fund (1999)
Children's Fund (1995)
Christiansen/Shuchman Fund (1987)
Francis & Catherine Christy Fund (1975)
Clark Family Fund (2000)
Cameron Clark Memorial Fund (1998)
Edith M. Clark Fund (1944)
Fenton Clark Fund (1986)
Valerie G. Clark Memorial Fund (1978)
Clarke-Kammerer Family Fund (2003)
Kevin Cleary Memorial Fund (2001)
Cline Foundation Fund (1995)
Clinton Community Garden Fund (1985)
Coco Fund (2000)
Charles I. & Ellen F. Cogut Fund (1995)
Helen Cohen Fund (1995)
Lisa E. Cohen Memorial Scholarship Award Fund (1991)
Susan B. Cohen Fund (1998)
Cole Family Foundation Fund (1999)
Coleman Family Fund (2003)
John & Ann Coleman Fund (1984)
Warren Coleman Fund (1986)
Richard M. Colgate Fund (1959)
Irene D. Collia Trust (1980)
Columbus Circle Fund (1976)
Composers Fund (1987)
Georgianna B. Conlin Fund (1998)
Kevin P. Connors Fund (1986)

funds in 2005

- Conroy Family Fund (1999)
Cook Family Fund (1986)
Lane Cooper Fund (1960)
Copper Beech Fund (1979)
Candice Coram Memorial Fund (1996)
Gertrude Corbitt Bequest (1959)
Barbara Fatt Costikyan Fund (1999)
*Jennifer L. Costley & Judith E. Turkel Fund (2005)
Melinda & James M. Cotter Fund (1986)
Counterpoint Fund (1996)
Valery Craane Fund (2004)
*Critchlow/McCormick Family Fund (2005)
Charlotte L. Crittenden Fund (1932)
A. Evelyn Cronquist Fund (1991)
William & Sally Cross Charitable Fund (2001)
Winifred Crost Fund (1981)
Andrew Crystal & Family Fund (2004)
Charles E. Culpeper Fund (1999)
Cumulus Fund (1992)
Cushman Family Fund (2003)
Paul & Paulette Cushman Fund (1998)
- D**
- John Da Silva Memorial Fund No. 1 (1988)
John Da Silva Memorial Fund No. 2 (1988)
John Da Silva Memorial Fund No. 3 (1988)
DAL Fund (1984)
Danziger Family Fund (1973)
Abraham L. Danziger Fund (1979)
Ellen & Sabin Danziger Fund (1997)
Darlington Fund (1973)
Elizabeth B. Dater & Wm. Mitchell Jennings Jr. Fund (1999)
Mildred Squires Davidson Fund (2004)
Davin Family Fund (1995)
Davis Polk & Wardwell Fund (1997)
Davis Polk & Wardwell Fund for Children (2001)
Donna Scher Davis Fund No. 1 (1993)
Donna Scher Davis Fund No. 2 (1996)
*Dawn Fund (2005)
Day Memorial Fund (1948)
Eugenia Ortuno de Bartels Fund (2002)
G. Louise Robinson de Dombrowski Fund (1991)
Adam de Havenon Fund (2004)
Georgja & Michael de Havenon Fund (1986)
De Lisio Family Charitable Fund (2003)
Peter J. De Luca Family Fund (1991)
Georges & Lois de Menil Charitable Fund (1977)
Edmond de Rothschild Fund (2000)
Lynn Forester de Rothschild Fund (2002)
Jay & Ruth De Soto Mayor Fund (2004)
Ellen A. Dearborn Fund (1969)
David & Diane DeBell Family Fund (2003)
Richard & Barbara Debs Fund (1986)
Deerdodds Fund (1997)
Defliese Family Fund (1971)
*Albert P. Delacorte Fund (2005)
George Delacorte Center for Magazine Journalism Fund (1998)
George Delacorte Fund (1994)
Valerie Delacorte Fund (1993)
Delafield Fund (1975)
Delany Sisters Fund (1994)
Denning/Bowman Fund (1986)
Derby Fund (1983)
Brian & Silvija Devine Fund (1986)
- J. Hugh & Nancy Devlin Fund (1986)
Mary Wheeler Dewart Fund (1976)
Diacre Family Fund (2003)
Hester Diamond Fund (2002)
Robert S. & Susan A. Diamond Fund (1986)
DiBlasi Fund (2000)
Esther Baiyla Dinner Memorial Fund (1999)
William & Linda Doescher Charitable Fund (2003)
Dogwood Fund (1979)
Eugene, Bridget & Tommy Dolphin Scholarship Fund (1992)
Susan Wells Donnell Fund (1984)
William W. Donnell Fund (1994)
William W. Donnell Fund for Parks (2003)
A. James Donohue Fund (1986)
Donors' Education Collaborative of New York City Fund (1992)
Dora Fund (2001)
Mr. & Mrs. Stephen M. Dowicz Fund (1994)
John & Hebe Dowling Fund (1986)
Nancy A. Downey Fund (1980)
Robert N. Downey Fund (1977)
Nathan & Miriam Drachman Fund (1989)
W. Christopher Draper Fund (2003)
Bruce Dresner Fund (1993)
Leon Drew Fund (2001)
Drexel Burnham Lambert Fund (1995)
Dreyfus Charitable Fund (2001)
Beatrice L. Drossman Fund (1998)
James R. Dumpson Fund (1999)
William M. Duncan Family Fund (1986)
T. J. Dermot Dunphy Fund (1984)
Dutch Kills Civic Association Fund (1994)
Solomon Dutka Fund (1999)
- E**
- East Harlem Tutorial Program Fund (1997)
Evelyn & Jack Eber Fund (1995)
Ebisu Fund (1993)
E.C.B. Fund (1960)
Economic Justice Fund (1989)
Julius & Margarete Edelstein Fund (1991)
Edlow Fund (1996)
Eleanor Franklin Egan Memorial Fund (1927)
E.H.C. Foundation (1967)
Einhorn/Lasky Family Fund (1999)
Dr. Moses Einhorn Fund (1964)
Eiseman Altschuler Fund (2003)
Irving & Blanche Eisenberg Charitable Fund (1995)
Carole & Richard Eisner Fund (1980)
Claudio Elia Fund (1997)
Dr. Deborah Elkins Fund (1993)
Gertrude Elkins Memorial Fund (1993)
Howard L. Ellin Charitable Fund (2003)
Nancie Ellis Fund (2004)
ELSAM Fund (1999)
Lita & Walter Elvers/Zipperian Fund (1999)
Henry C. Enders Funds (1976)
Mildred F. Englander Fund (1985)
Enos Fund (1983)
Samuel Epstein Lecture Fund (1999)
Josephine L. Erwin Fund (1935)
Essex Associates Fund (1986)
James A. Essey & Nina Zakin Essey Fund (1994)
Evans Family Fund (1995)
Bradford & Barbara Evans Fund (1986)
Everett Philanthropic Fund (1986)

F

Fahnestock Family Fund (1980)
 Fahs-Beck Fund for Research & Experimentation (1986)
 Fahs-Beck Fund II for Research & Experimentation (1993)
 Edgar W.B. Fairchild Fund (1992)
 Fairway Fund (1987)
 Falk, Lichten & Rosenstein Fund (1995)
 David Falk Memorial Fund (1989)
 Susan Meyers Falk Fund (1996)
 Joseph Fancher Fund (1983)
 Farrand Family Fund (1993)
 Faunsdale Fund (1986)
 Mary S. Fearey Fund (1986)
 Emanuel & Bertha Feder Memorial Fund (1994)
 Federal Bar Council/U.S. Attorneys' Offices Fund (2001)
 Robert B. Feduniak Fund (1986)
 Sidney Feiner Memorial Fund (1997)
 Feinsod Herz Fund (1980)
 Feldman Family Fund (1982)
 Louise & Marvin Fenster Family Fund (1999)
 Anthony & Vanda Ficalora Fund (1988)
 Judith & Norman Fields Fund (1992)
 Raymond H. Fiero Fund (1984)
 Brian Keith Fifield Memorial Scholarship Fund (1987)
 Filak Family Fund (1999)
 Simon Finck Fund (1959)
 Golda & Mollie Fine Fund (1977)
 Laura & Michael G. Fisch Fund (1999)
 Fishbein Family Fund (1998)
 Mitchell S. Fishman Donor-Advised Fund (1999)
 Robert B. Fiske, Jr. U.S. Attorneys Fellowship Fund (1987)
 Desmond Gerald FitzGerald Charitable Fund (1986)
 Kirsten Flagstad Memorial (1964)
 William E. Flaherty Family Fund (1998)
 Sam Flax Memorial Scholarship Fund (1964)
 Fletcher Fund (1999)
 Elizabeth H. & Irvine D. Flinn Fund (1999)
 Josephine Flood Memorial (1950)
 Francis Florio Funds (1974)
 Flushing Females Association Scholarship Fund (1992)
 Michel Fokine Memorial Fund (1985)
 Walter B. Ford Funds (1972)
 Fortune Society Education Fund (1994)
 Fosdick Fund (1986)
 David Foster & Mina Samuels Fund (1997)
 John H. Foster Fund (1984)
 Ben Fox Memorial Fund (1962)
 Ellen Fox Family Fund (1994)
 Adam Frand Fund (1998)
 Frank Fund (1995)
 Abraham B. & Sarah Frank Funds (1955)
 Martin M. Frank Scholarship Fund (1990)
 Thomas W. & Claire W. Frank Fund (1977)
 Corinne R. Frear Fund (2000)
 Arthur & Elinor Fredston Fund (2004)
 David Freedman Fund (1994)
 *Ernest Grey Frerking/Sharon Frerking Philanthropic Fund (2005)
 Robert & Linda Friedman Family Fund (1995)
 *Robert L. & Barbara L. Friedman (2005)
 Fuld Family Fund (1991)
 Kenneth & Margo Fuld Fund (2001)
 Fuller Fund (1986)
 Fun On 2 Wheels Fund (1998)
 Fund for Autistic Children (2000)

Fund for the Delacorte Theatre in Central Park (1998)
 Fund for Fiorello H. LaGuardia High School of Music & Arts (1983)
 Fund for New Citizens (1987)
 Fund for Performances at the Delacorte Theatre in Central Park (1999)
 Future of Design Jewelry Education Fund (1997)

G

Laly & George Gallantz Fund (1991)
 Gallogly Strickler Family Fund (2003)
 Donald R. Gant Fund (1979)
 Gardner Family Fund (2003)
 William T. Gardner Theatre Internship Fund (1992)
 Gloria & Barry H. Garfinkel Fund (1986)
 Barbara Gauntlett Scholarship Fund (1986)
 Paul Edward Gay Fund (1990)
 Geduld Fund (1993)
 Victoria & E.E. Geduld 'Starworks' Fund (1995)
 Bruce S. Gelb Fund (1995)
 Richard L. Gelb Fund (1995)
 Gemini Fund (1998)
 General Charitable Fund (1971)
 Ruth E. & Timothy M. George Charitable Fund (1986)
 Jacques A. Gerard Fund (1987)
 Pierce Gerety Memorial Fund (1998)
 Benjamin Gertz Fund (2004)
 Jerrold Gertz Fund (2004)
 Clara A. Gierisch Fund (1975)
 John N. & Gillett A. Gilbert Family Fund (1999)
 Nancy & Lloyd Gilbert Fund (2003)
 Elena Gildersleeve Fund (1982)
 Stephen Gillen Family Fund (2004)
 Frank J. Gillespie Fund (1985)
 Gilmore Human Rights Fund (1980)
 Sonia Raiziss Giop Literature Fund (1994)
 Santina Giordano Memorial Fund (1985)
 Glaser Family Fund (1994)
 Robert J. Glenn Memorial Fund (1974)
 Rose N. Glenn Memorial Fund (1990)
 Danny Glick Memorial Scholarship Fund (2001)
 Gloria Fund (1981)
 Madeline Shobry's Glisten Fund (1999)
 Goins Family Fund (2003)
 Steven & Jan Golann Fund (1998)
 Rita & Herbert Z. Gold Education Fund (1993)
 Golden Family Fund (1992)
 Goldman Sachs Fund (1970)
 Jack Goldring Fund (1986)
 Gold-Schiff Fund (1994)
 Alice & Stanley Goldstein Fund (1997)
 Eric L. Goldstein Fund (1999)
 Patricia & Bernard Goldstein Fund (1985)
 Good Samaritan Fund (1993)
 Lawrence & Katherine Goodman U.S.S. Missouri Memorial Fund (2004)
 Maurice & Georgine Goodman Fund (1998)
 Roger & JoAnn Goodspeed Fund (1986)
 Goodwin Family Fund (1999)
 Everett F. & Ann P. Gordon Memorial Fund (1991)
 Gail Gordon Fund (2000)
 William J. Gossen Fund (1985)
 Josh Gotbaum & Joyce Thornhill Fund (1991)
 *Lee Gottlieb Fund (2005)
 Gouverneur Hospital Fund (1958)
 Eugen Grabscheid Fund (1992)

funds in 2005

Howard E. Grace Fund (1998)
Paul & Anne Grand Fund (2004)
Joan P. Grano Memorial Fund (1996)
Maggie & Gordon Gray Family Fund (1998)
Green Fund (1985)
*Lawrence & Barbara Green Fund (2005)
Orland S. & Frances S. Greene Fund (1962)
Greenebaum Fund (1984)
John Robert Gregg Fund (1985)
J & J Gribetz Fund (1983)
Linda A. Griffith Fund (1970)
Arthur Griggs Fund (1947)
Emily Griggs Fund (1944)
Gross Family Fund (2003)
*Stella Grover Fund (2005)
W. R. Gruver Fund (1986)
Rudolph Guenther Fund (1977)
Sydney A. Guggenheimer Memorial Fund (1949)
*Sarah G. Gund Fund (2005)
Gunn Family Fund (1999)
Lucille Gutman Trust (1984)
Gwertzman Family Fund (2004)

H

Haas Foundation Fund (2000)
Leopold Haas Fund (1984)
Katherine & Morris Hadley Trust (1968)
Horace & Amy Hagedorn Fund (1995)
Emil & Zerline Hahnloser-Richard Bak Fund (1975)
Hajim Family Fund (1983)
James F. Haley Memorial Fund (1983)
Luke Halpin Memorial Scholarship Fund (2002)
Carol D. & S. Sutton Hamilton Charitable Fund (2003)
Mike Handy Memorial Fund (2003)
Lola G. Hanna Fund (1995)
Gwenda & John Hanson Fund (1986)
Lee Hanson & Don Scherer Fund (1986)
Harbor Watch Fund (2000)
William Barclay Harding Fund (1979)
Augusta Lehman Harlem & Lillian Harlem Martin Fund (2000)
Harmony Fund (1986)
Elisabeth Scott Harms Fund (1982)
James W. Harpel Fund (1983)
Jon Harrington Fund (2003)
Harris Family Fund (1992)
Charlotte Daniels Harris Memorial Fund (2002)
Elsie & Chelsea Harris Memorial Fund (1996)
Jeff & Judy Harris Fund (2003)
Katharine S. Harris Fund (1965)
William Harris Fund (2000)
Hastings Peace & Justice Fund (1993)
Haupt Family Fund (2000)
Harry & Eugenie Havemeyer Fund (2001)
Hawk's Nest Fund (2000)
Hawthorne Lane Fund (1986)
Steve Hayden Fund (2004)
Hayes Family Fund (1996)
Ralph Hayes Memorial Fund (1968)
Health & AIDS Education Fund (1991)
Thomas P. Healy Fund (2003)
Thomas Healy & Fred P. Hochberg Fund #1 (1995)
Thomas Healy & Fred P. Hochberg Fund #2 (1995)
Nicholas C. Heaney Memorial Fund (1997)
Stella & Howard A. Heffron Fund (1998)

Heiser Grant (1972)
Hemlocks Fund (1978)
Mercedes R. Henderson Memorial Fund (1996)
Paul & Ann Henegan Fund (1986)
Ruth Hennig Fund (2003)
Lucy Henning Memorial Fund (1995)
Lucy & George Henning Fund (1974)
Alexander S. Henry, Sr. & Ann S. Henry Memorial Fund A (1989)
Alexander S. Henry, Sr. & Ann S. Henry Memorial Fund B (1995)
Doris & Milton Hepner Fund (2000)
Herbster Family Fund (1990)
Jane R. & Andrew L. Herz Fund for Criminal Justice (1986)
Betty L. Hess Fund (1980)
*Frances A. Hess Fund (2005)
Don & Marilyn Berger Hewitt Fund (1998)
Leo & Ethel Heymann Memorial Fund (1954)
Murray Hidary Fund (1998)
High Exposure Fund (1993)
High School of Commerce, Class of 1911 Scholarship Fund (1967)
Hintz Family Fund (1991)
Hirsch Fund (1986)
Peter M. Hirsch Memorial for Thyroid Cancer Research Fund (2001)
Steven Hirsch Fund D (1973)
Steven J. Hirsch Fund (2002)
Susan Hirschman Fund (1999)
Martin Hirschorn IAC Fund (1995)
Margaret M. Hitchcock Fund (1946)
Ho/Ching Charitable Fund (2003)
Mary & David Hoar Trust for the Honor & Glory of God (1975)
Rita & Irwin Hochberg Charitable Fund (1982)
Charles & Fredrica Hochman Fund (2004)
Hodgson Fund (1995)
John J. Hoffee Fund (1996)
Gloria & Joel S. Hoffman Fund (2001)
Jane & Michael Hoffman Charitable Gift Fund (2003)
Marion O. & Maximilian E. Hoffman Fund (1984)
Lillian & William Hoffmanns Fund (1990)
Sharon King Hoge Fund (2000)
Holmen Family Fund (2002)
Britt Holmen Family Fund (2002)
Mark Holmen Family Fund (2002)
Robert C. Holmen Family Fund (2002)
Homeless Outreach & Assistance Fund (1997)
Horing Family Fund (2001)
Katie Danziger Horowitz & Steven G. Horowitz Family Fund (1995)
Saul Horowitz, Jr. Fund (1999)
John & Sandra Horvitz Fund (1996)
Norris Houghton Theatre Fund (1988)
Allan Houston Charitable Fund (2001)
Ralph N. Hubbard Fund (1948)
Doctor Joseph E. Hughes Scholarship Fund (1984)
Margaret J. Hughes Memorial Fund (1990)
W. Ockham Hume Fund (2003)
Mildred K. Hurson Fund (2003)
Rene K. & Samuel M. Hyman Memorial Fund (1978)

I

I Get Fund (1991)
Charles F. Ikle Scholarship & Research Funds (1965)
Indian Mountain School Fund (1993)
George A. Ingalls & Ann C. Ingalls Fund (1957)
Ingraham Fund (1986)
Innovative Design Fund (1988)
Intrepid Fund (1976)

Paul J. Isaac Fund (1981)
Iseman Eleemosynary Fund (1999)
Island Fund (1975)
Isabel C. & Walter T. Iverson Fund (1986)

J

J B Fund (1985)
Jackson Fabrics Associates Fund (1986)
Frederick Jacobi Memorial (1952)
Jaffe Education Fund (1995)
Cyril D. & Elena Jalon Fund (1986)
Jamaica Fund (1989)
Lucy Wortham James Fund (1935)
Lucy Wortham James Memorial (1939)
Walter B. James Fund No. 1 (1927)
Walter B. James Fund No. 2 (1927)
Jamestown Fund (1990)
Jeanne d'Arc Foundation (1927)
JEHT Fund (1999)
*Daniel J. Jenks Memorial Fund (2005)
Jenny-Hitshew Fund (1994)
Elise Jerard Environmental & Humanitarian Trust (1981)
JM Legacy Fund (2000)
Harry J. & Teresa H. Johnson Graduate Scholarship Fund (1987)
Harry J. & Teresa H. Johnson Scholarship Fund (1983)
Harry J. & Teresa H. Johnson Scholarship Fund No. 2 (1985)
Laura & Ray Johnson Fund (2003)
Johnson Street Fund (1992)
Jophed/Thomas Fund (1975)
*Stanley Josephson Fund (2005)

K

Annette Kade Fund (1994)
KAL 007 Victims Memorial Fund (1988)
Michael Kalil Foundation Fund (1992)
Seth & Barbara Lewis Kaplan Fund (1998)
Susan Grant Kaplansky Fund (2001)
Barbara & William Karatz Fund (1986)
Karlisle Fund (1999)
Roberta & Brad Karp Family Fund (2004)
Hagop, Arousiag & Arpy Kashmanian Scholarship Fund (1999)
*Robert A. Kasner Fund (2005)
*Katrina Relief Fund (2005)
Leander & Helen Katsidhe Fund (1999)
Judy Katz/Oren Rudavsky Fund (1996)
Dr. Martin R. Katz Fund for Culinary Arts (1988)
Glenn & Kim Kaufman Fund (2004)
Robert M. Kaufman Fund (1988)
Robert M. Kaufman Fund No. 2 (2002)
Marion Esser Kaufmann Fund (1985)
Walter & Selma Kaye Fund (1994)
Paul Kazanoff Memorial Fund (1998)
Hamilton F. Kean Fund (1985)
Kearney Family Fund (2004)
Adrian & Alieda Keevil Fund (2004)
Robert Prior Kehoe Fund (1974)
Richard Keim Family Fund (1983)
William Wilson Kelchner Memorial Fund (1972)
Jane & Donald Seymour Kelley Fund (1997)
Peter L. Kellner Fund (1986)
Kelner Family Fund (1996)
Carl & Doris Kempner Fund (1996)
Michael C. Kempner Fund (1997)
Kenary Fund (2004)

Kenilworth Fund (1970)
Friends of Jim Keresey Fund (2001)
*Gilbert N. Kerlin Fund (2005)
*Jonathan O. Kerlin Fund (2005)
Ellen Kheel & Arnold S. Jacobs Fund (1998)
King Family Fund (2000)
Harold Thomas King Jr. & Lisbeth King Fund (1986)
Kira Fund (1992)
Joseph M. Kirchheimer Fund (1989)
John H. Kirst Memorial Fund (1999)
*Kismet Fund (2005)
Susan B. & Donald M. Kitchen Fund (1989)
Casey Kizziah Fund (1994)
Andrew Bradford Klein Fund (2001)
John C. Klein Trust (1981)
Sharon Klein Memorial Fund (2002)
Ted Klein Fund (2000)
Morris Kligman Memorial Fund (2000)
Jane & Richard Koch Fund (1987)
Mary Conway Kohler Fund (1986)
KOKORO Fund (2004)
Korda Fund (1990)
Dr. Joseph M. & Grace Koreen Micha Scholarship Fund, Israel (1986)
William A. Koshland Fund (1987)
John C. Koster Fund (2003)
Patricia Berry Kozak Fund (2004)
Kozukai Fund (2003)
Henry Phillip Kraft Family Memorial Fund (1996)
Sydney & Marjory Krause Fund A (2004)
Sydney & Marjory Krause Fund B (2003)
Sydney & Marjory Krause Fund C (2003)
Michael & Patricia Kraynak Fund (1986)
Charlotte & Stanley Kriegel Fund (1997)
Susan J. Kropf Fund (2002)
Mark Krueger Charitable Fund (2004)
*Bernie & Lydia Kukoff Fund (2005)
Wheaton B. Kunhardt Fund (1949)

L

Lachance Family Charitable Fund (2003)
Ann D. & John W. Laibe Fund (1994)
Benjamin V. & Linda L. Lambert Fund (1996)
*Lampe Family Fund (2005)
Lamport Foundation Fund (1975)
Landlocked Fund (1986)
Allan Browning Lane Memorial Funds (1980)
Lang Fund (1982)
Langner Family Fund (2000)
Catherine & Henry Lanier Family Fund (1998)
Judith & Jean Lanier Fund (1986)
Rose Kean Lansbury Fund (2000)
May Seton Bayley Large Memorial (1928)
LaRosa/Zurkühlen Fund (1997)
William S. & Stanley S. Lasdon Fund (1984)
David Lawrence Fund (2000)
Le Veque Memorial Foundation (1984)
Ledges Fund (1996)
Lee Family Chinese Immigrant Education Fund (2001)
Leede Family Fund (1996)
*Jeffrey R. & Joan Leeds Fund (2005)
Howard Z. Leffel Fund (1970)
Lefrak Charitable Fund (1998)
Lefrak Non-Advised Fund (1999)

funds in 2005

- Lehman Brothers Fund (1980)
Lehman Brothers T. Christopher Pettit Memorial Fund (1998)
Delia & Artemio León Fund (1997)
Frederick H. Leonhardt Fund (1979)
Leonia High School Class of 1979 Entrepreneurship Scholarship Fund (2001)
Reba Q. Lerch Fund (1971)
Betty & John A. Levin Fund (1998)
David P. & Peggy Levin Fund (1995)
Dustin Levine Fund (2000)
Robert & Patricia Levinson Fund (1985)
Jacob Levy Fund (1990)
*Carolyn & Edward Lewis Fund (2005)
Wadsworth Russell Lewis Trust Fund (1989)
Henry & Janine Lichstein Family Fund (1992)
Lichtenstein-Miller Fund (1994)
Barbara & Richard Lieberman Fund (1979)
Light Fund (1998)
Dawn Lille Dance Award Fund (1994)
Ken Lin Fund (2002)
Robert & Maria Lin Fund (1992)
Linden Memorial Fund (1994)
Adolf G. & Eloise Linden Scholarship Fund (1995)
Alexander & Ella Lindsey Fund (1991)
Lindgren Family Fund (1999)
George N. & Mary D. Lindsay Fund (1996)
Linwood Fund (1983)
Lion & Hare Fund (1970)
Lannie S. & Howard A. Lipson Fund (2001)
Literacy in Early Childhood Fund (2000)
Edward H. Little Memorial Trust (1982)
Royal Little Fund (1992)
Nancy Liu Memorial Fund (1995)
Livingston Fund (1995)
Arthur L. Loeb Fund (1982)
Frances L. Loeb Fund (1974)
Loewenberg Foundation, Inc. Philanthropic Fund (1983)
Wilhelm Loewenstein Memorial Fund (1940)
Michael Lomax Memorial Fund (2001)
Jane P. Long Fund (1991)
Clara & Bevis Longstreth Fund (1996)
Longview Fund (1990)
Elizabeth Meyer Lorentz Fund (2002)
Los Altos Anonymous Fund (2001)
Thomas H. Loughman Memorial Scholarship Fund (1978)
Ellee J. Lovelace Fund (1970)
Ruth Norden Lowe & Warner L. Lowe Memorial Fund (1990)
Lowenstein Fund (2002)
Rena M. Lucardi Fund (1997)
Lucien Fund (2000)
Melvin Ludwig Memorial Fund (1993)
Judge J. Edward Lombard U.S. Attorneys Fellowship Fund (1977)
Lynford Family Fund (1988)
Amelia & George Lyons Memorial Fund (1994)
- M**
M & N Fund (2000)
Clara L. Macbeth Funds (1977)
Sharon & William Macey, Jr. Fund (2000)
Nancy G. & C. Richard MacGrath Fund (1996)
Afiie & Richard Macksoud Foundation (1975)
Lloyd F. MacMahon Fellowship Fund (1989)
John D. Macomber Fund (1999)
Camp Edith Macy Fund (1926)
Edith Carpenter Macy Memorial Fund (1926)
Wilson H. Madden, Jr. Fund (1993)
Maginnis Family Fund (1994)
Brian & Florence Mahony Fund (1997)
Major Fund (1971)
T. Maltese Fund (1998)
Jan W. Mares Fund (1978)
Mark Family Fund (1986)
Alison Billie Marks Memorial Fund (1993)
Dora, Edythe K., & Sylvia Marks Family Fund (1999)
Dorothy Marks Fund (1997)
Royal S. Marks Foundation Fund (1992)
*Lory & Carol Marlantes Family Charitable Fund (2005)
Marlin Fund (1995)
Alfred J. Marrow Fund (1974)
Patricia T. Marshall Fund (1998)
Marstrid Fund (2003)
Suzette Brooks Masters & Seth J. Masters Fund (1999)
Vincent James Mastronardi/Thomas J. Fahey Memorial Fund (1993)
Margaret Mathews Fund (2001)
MacDonald Mathey Fund (2001)
Mathys Fund (2000)
Edward Maverick Fund (1963)
Maxwell Family Fund (1991)
Claudia Kress Mayberry Fund (2000)
Jessica Kress Mayberry Fund (2000)
Paul M. Mazur Fund (1945)
Peter & Drusilla Mazur Fund (1975)
McAfee Foundation Fund (2003)
Sarah S. McAlpin Fund (1996)
Townsend Martin McAlpin Fund (1983)
Blanche & Edwin D. McArthur Fund (1999)
McCaffrey Family Fund (1985)
McClendon Fund (1999)
Cyrus McCormick & Florence S. McCormick Memorial Fund (1995)
Colonel & Mrs. Henry Bayard McCoy Memorial Fund (1957)
Ruth McCreary Fund No. 1 (2001)
Ruth McCreary Fund No. 2 (2001)
Alonzo L. McDonald Family Fund (1983)
Donald Wesley McDougall Memorial Fund (1991)
John Todd McDowell Environmental Fund (2004)
Michael R. McGarvey Fund (2001)
Richard E. "Rusty" McGivney Memorial Fund (1999)
John F. & Jean C. McIlwain Fund (1995)
Mark McInerney Fund (1986)
Dave McKennan Memorial Fund (2003)
Isabel C. McKenzie Fund (1952)
Janet H. McPherson Memorial Funds for Children (1984)
Emily McIntyre Means Fund (1995)
Melzer Fund (1994)
Toni Mendez Fund (2003)
Friedrike Merck Fund (2002)
George W. Merck Fund (1987)
John Merck Fund (1981)
Helen Merrill Fund (1998)
Ralph D. Mershon Trust (1953)
LuEsther T. Mertz Fund (1995)
LuEsther T. Mertz Advised Fund (1995)
Merz Supplemental Fund (1986)
Charles Merz & Evelyn Scott Merz Memorial Fund No. 1 (1984)
Charles Merz & Evelyn Scott Merz Memorial Fund No. 2 (1984)
Ruth W. Messinger Fund (1995)
Sharon Metrick Memorial Fund (2001)

Michaels Fund (1979)
 Jeanne Michaud Gift (1964)
 Middle Road Fund (1983)
 Midnight Mission Fund (1974)
 Midtown Fund (1997)
 Gregory Millard Memorial Fund (1985)
 M.J.H. Fund (1964)
 MLW Advised Fund (1998)
 Mobility Rehabilitation Fund (1964)
 Leo Model Fund (1988)
 Moles Scholarship Fund (1996)
 Molly & Carl Fund (2000)
 Monmouth Fund (1984)
 Moore Family Fund (1994)
 Barbara F. & Richard W. Moore Fund (1997)
 Shirley I. Moore Fund (2002)
 Terence W. Moore Memorial Fund (2004)
 Moosehead Fund (1996)
 Arthur G. Moraes Memorial Fund (1999)
 Marie Morgello Book Fund (1993)
 Jenny Morgenthau & Eugene R. Anderson Fund (1992)
 Morningside Retirement & Health Services, Inc. Fund (1993)
 Helene & Bruce Morrell Fund (1999)
 Morris Opportunity Fund (1976)
 Alice V. & Dave H. Morris Memorial (1958)
 Jennifer Emily Morris Memorial Fund (1985)
 Lawrence Morris Charitable Trust (1992)
 Robert C. Morris & Aline B. Morris Fund (1939)
 Georgiana Koenig Morrison Fund in Memory of Cyrus Morrison (1990)
 Carl Walter Mortenson Fund (1996)
 George T. Mortimer Foundation (1970)
 Moses Fund (1992)
 Hanna & Jeffrey Moskin Family Fund (1997)
 Sam & Fanny Moskowitz Fund (1986)
 Sheila & James Mossman Fund (2000)
 Mount of Olives Fund (1989)
 Frieda Mueller Fund (1981)
 Suzanne C. & Carl M. Mueller Charitable Fund (1999)
 Joanna Mufson Memorial Trust Fund (1983)
 Mulber Fund (1947)
 Stephen Mulderry Memorial Fund (2001)
 Alexandra Munroe Fund (2002)
 Munson Foundation (1978)
 Marjorie Oatman Munson Memorial Fund (1980)
 Thomas W. & Florence T. Murphy Fund (1984)
 Virginia Murphy Memorial Scholarship Fund (1954)
 William & Janice Murphy Charitable Fund (2003)
 Musical Arts Fund (1939)
 Mustard Seed Fund (2000)

N

Nager-Wentworth Fund (1993)
 Anni P. Nalbandian Memorial Scholarship Fund (1997)
 Nana & Annie's Fund (1999)
 Murray L. & Belle C. Nathan Fund (1996)
 Walter W. Naumburg Memorial No.1 (1960)
 Walter W. Naumburg Memorial No.2 (1960)
 Navesink River Group Fund (2002)
 Gabe & Beth Nechamkin Fund (1997)
 Richard H. Needham Fund (1995)
 Ilse Nelson Fund (1986)
 Martin & Estelle Nelson Fund (1992)
 Ness Fund (1972)

Netmarket Fund (2000)
 Neuberger Berman, LLC Fund (1997)
 Daniel Neubourg Fund (1999)
 Nicole & Mark Neuhaus Fund (2000)
 *Never Done Fund (2005)
 New York City AIDS Fund (1988)
 New York Critical Needs Fund (1975)
 New York Critical Needs Endowment (2004)
 Friends of New York Downtown Hospital Health Sciences Scholarship (1996)
 New York It Ain't Over Fund (1993)
 New York Keller Family Fund (2004)
 New York Vietnam Veterans Memorial Fund (1983)
 Annalee Newman Fund (1998)
 Arthur B. & Eileen D. Newman Charitable Fund (2003)
 Hally & James Nicol Fund (1998)
 Herbert Nidenberg Scholarship Fund (1993)
 Nimble Waiter Fund (2004)
 *Nolan Family Fund (2005)
 Nollmann Fund (2004)
 Olivia Schieffelin Nordberg Fund (1996)
 Northcliff Philanthropic Fund (1979)
 Adelaide Walker Nugent Fund (1974)
 NYC Workforce Development Fund (2001)

O

Oak & Acorn Fund (2000)
 Oasis Fund (1984)
 Lindsay & Terry O'Brien Fund (2002)
 Sheila J. O'Connell Fund (1999)
 A.P.J. O'Connor Fund (1996)
 Robert K. & Jean O'Connor Fund (1979)
 William B. O'Connor Fund (1996)
 Octagon Fund (1978)
 Mary P. Oenslager Foundation Fund (1996)
 Abraham Oestreicher Fund (1972)
 John Ogden Memorial Fund (1986)
 O'Hanlan-Walker Family Fund (2003)
 Florence C. Oliveira Memorial (1969)
 Olmezer Family Fund (1998)
 Olni Fund (1998)
 Jacqueline Kennedy Onassis High School Fund (1997)
 Open Door Fund (1996)
 Oppenheim Family Fund (2000)
 Martin & Suzi Oppenheimer Philanthropic Fund (1998)
 Origo-Levy Animal Care Fund (1993)
 Origo-Levy Child Welfare Fund (1993)
 *Susan Orkin Fund (2005)
 Maxwell Orloff Fund (1998)
 Donald R. Osborn Fund (1986)
 Courtlandt Otis Fund (1973)
 Jeanne Marie Otter Scholarship Fund (1989)
 Outdoor Life Conservation Fund (1998)
 Overlook Fund (1971)
 Owen Fund (1986)

P

F. LeMoyné Page Memorial Fund (1977)
 Mary LeMoyné Page & Romaine LeMoyné Billings Memorial Fund (1980)
 Manfred Pakas Scholarship Fund (1981)
 Heidi Paoli Fund (1987)
 Papa & Nunu Fund (1999)
 Katharine A. Park Funds for the Elderly (1982)
 William Hallock Park Research Fund (1976)

funds in 2005

Parkinson Fund (1995)
Lorenzo & Isabelle Parsons Scholarship Fund (1998)
*Mary Sherman Parsons Fund (2005)
Partnership for Family Supports & Justice Fund (2002)
Partridge Fund (1997)
Patricof Family Foundation Fund (1979)
Robert P. Patterson Memorial (1952)
Oliver H. & Lola G. Payne Fund (1994)
Marion & Bret Pearlman Charitable Fund (2003)
Pedowitz Family Fund (1999)
Pennies from Heaven Fund (2001)
Penobscot Fund (1993)
Donald & Miriam Marya Perkins Charitable Fund (1989)
Dorothy Perlow Fund (1996)
Jacob Perlow Memorial Fund (1983)
Irene Peron Fund (2000)
CB Perrette Fund (1999)
Virginia & Jean R. Perrette Fund (1997)
Richard L. Perry Memorial (1935)
Leonard L. Perskie Memorial Fund (1980)
Petersmeyer Family Fund (1973)
Peter G. Peterson Fund (1977)
Peter G. Peterson & Joan Ganz Cooney Fund (1980)
Seymour & Beverly Peyser Fund (1986)
Phil Fund (2001)
Hal Philipps Fund (2003)
Kenneth A. & Helen Clark Phillips Fund (1972)
Charles M. Phinny Fund (1987)
John P. Picone Charitable Foundation Fund (2004)
*Chad Pike Family Fund (2005)
Pilkington Family Fund (1996)
Pilot House Fund (1985)
Pine Cone Fund (2000)
Pine Tree #2 Fund (2000)
Pinkerton Trust (1979)
Marietta C. Pino Memorial Fund (1982)
Emanuel & Nora Piore Fund (2002)
Emanuel & Nora Piore Memorial Fund (2002)
John Polachek Fund (1958)
Samuel S. & Anne H. Polk Charitable Fund (2000)
Maxwell A. Pollack Fund (1986)
Leo L. Pollak Memorial Fund (1984)
Richard H. Pollak Fund (1987)
Helene Pomerantz Memorial Fund (1991)
Katharine Sloan Pratt Fund (2002)
Barbara S. Preiskel Memorial Fund (2002)
Barbara & Robert Preiskel Fund (1986)
President's Fund (2004)
Kurt & Gladys Preuss Fund (1981)
Sidney S. Prince Trust (1964)
Thomas Pringle Memorial/Margaret Pringle Fenton Fund (1957)
Thomas Pringle Memorial/Samuel Pringle Fund (1957)
Robert & Ilse Prosnitz Fund (1999)
Publishing Triangle Literary Fund (2004)
Valerie & Michael A. Puglisi Fund (2003)
Pundyk Family Fund (1998)
Pyewacket Fund (1997)

Q

Q Fund (1996)
Quasha Family Fund (1995)
Queens College Speech & Hearing Center Fund (1999)
Alan G. Quitko Fund (1997)

R

RAB Fund (1975)
*Radin Family Fund (2005)
R.A. Radley Fund (1994)
Ragin Family Fund (2002)
Raiziss/de Palchi Translation Award Fund (1994)
Calvin Ramsey Scholarship Fund (2003)
Addison C. Rand Fund (1940)
*Lynne S. Randall Charitable Fund (2005)
Carl & Toni Randolph Fund (2000)
Ralph J. Rangel Fund (1989)
Rankin-Smith Fund (1985)
Anthony E. & Josephine C. Rapp Fund (1996)
F&R Ravitz Family Fund (1997)
Jeanne & Norman Reader Better English Award Fund (1997)
Reader's Digest Scholarship & Leadership Fund (1974)
Rebold Family Fund (2000)
Red Dog Hill Fund (2004)
Redstone Fund (1997)
Philip D. Reed Fund (1996)
Thomas D. & Natalie B. Rees Family Fund (1996)
Joseph E. Reich Fund (1986)
Henry H. Reichhold Scholarship Fund (1968)
Cordelia & David Reimers Fund (2002)
Rudyard & Emanuella Reimss Memorial Fund (2001)
Reingold Family Fund (2000)
Jerilyn Hayes Reiter Memorial Scholarship Fund (2001)
Rembrandt Fund (1977)
Eugene H. & Patricia C. Remmer Fund (1986)
Karl F. Reuling Fund (1993)
Reynwood Fund (1986)
R. Rheinstein Fund (1999)
Audrey Rheinstrom & Anne Blevins Fund (2003)
Rhodebeck Central Park Conservancy Fund (1999)
Rhodebeck Charitable Fund (2004)
Rhodebeck Fund for the Elderly (1989)
Rhodebeck Fund for the Homeless (1989)
Rhodebeck Fund for St. George's Society of New York (2001)
*Rhodebeck Prospect Park Fund (2005)
Grantland Rice Fellowship Fund (1951)
Marion & George Riley Fund (1968)
Rinaker Family Fund (1983)
Henry P. Riordan Fund (1990)
James Q. & Ruth M. Riordan Fund (1983)
Jordan Carlson Riordan & James Quentin Riordan III Memorial Fund (2003)
Rippe Family Fund (2001)
Virginia S. Risley Fund (2004)
Virginia S. Risley Family Fund (1995)
Kimberly Ritrievi Fund (2004)
Emilie D. Robb Fund (1938)
Patricia & Yves Robert Fund (1998)
Roberts Family Fund (1999)
Linda Roberts Fund (2004)
Robinson-Morrill Fund (1992)
Barbara Paul Robinson & Charles Raskob Robinson Fund (1996)
Marguerite P. Roche Fund (1972)
Laura Spelman Rockefeller Memorial Fund (1928)
Mary French Rockefeller Fund (2000)
Rogers Family Fund (1995)
Sarah & Harry Rogers Fund (1994)
Abigail Rome Fund (1990)
Jack & Leslie Ronder Fund (1999)
Dr. Joseph Richard Rongetti Scholarship Fund (1996)

Hugh & Katherine Roome Charitable Fund (2003)
Curtis Roosevelt Fund (1989)
Jonathan F.P. Rose & Diana Calthorpe Rose Fund (1996)
Richard Rose Fund (1981)
Rose/Margulies Fund (1997)
Jack & Mae Rosenberg Fund (1997)
Rosenfeld Family Fund (1986)
June S. Rosenfeld Memorial Fund (1989)
Susan Rosenfeld Fund (1998)
John P. Rosenthal Fund (1973)
Ida Ross Memorial Fund (1986)
Lila & Arnold S. Ross Charitable Fund (2000)
Rossetti Family Fund (2001)
Clara Lewisohn Rossin Trust (1949)
Roxbury Fund (1997)
Lisa Cordell Rubin Fund (1995)
Samuel N. & Charlotte Rubin Fund (1996)
Frederic A. & Susan A. Rubinstein Fund (1986)
Harry J. Rudick Fund (1988)
Rue de Reves Fund (1987)
Thomas Ruotolo Scholarship Fund (1985)
William D. Russell Fund (1971)
Rye Scholarship Fund (1977)

S

Myrten G. & Lillian V. Saake Memorial Fund (1994)
Daniel Saccomanno Fund (1996)
Bonnie & Peter Sacerdote Family Fund (1975)
Samuel Sacks Funds (1970)
Safer-Fearer Fund (1998)
Dr. Abraham & Shirley Saifer Fund (1992)
Herbert & Nancy Salkin Fund (1975)
Samaratrophia Fund (1995)
Nathan & Nancy Sambul Fund (1997)
Stacey Sanders Fund (2001)
Sarah A. Sanford Fund (1949)
Linda U. Sanger Charitable Fund (1999)
Louis & Carolyn Sapir Family Fund (1998)
Michael Sasse Charitable Fund (2001)
James & Sarah Scanlon Fund (2003)
Philip Scaturro Fund (2000)
Brigitte Holmen Schattenfeld Family Fund (2002)
Marielle J. Scheff Fund (2002)
Scheide Fund (1971)
Schein Family Memorial Fund (1987)
Henry Schein Inc. Company Fund (2003)
*Henry Schein Inc. Hurricane Katrina Disaster Relief Fund (2005)
Jacob H. Schiff Memorial (1924)
Jacqueline Schiller Fund (1998)
Max G. Schlapp Mental Hygiene Fund (1979)
*Schlegel Family Fund (2005)
Shain Schley Fund (1999)
Grace & Edith Schneider Memorial Fund (1949)
Schneiderman Family Fund (1994)
Anna E. Schoen-Rene Fund (1942)
Scholarships For Kids Fund (1993)
Anthony & Elizabeth Schulte Fund (1997)
John W. Schulz Memorial Fund (2000)
Alan D. Schwartz Family Fund (2000)
Stephen A. Schwarzman Fund (1999)
Robert J. Schweich Fund (1981)
Alfred H. Schwendtner Fund (1996)
Walter D. Scott Fund (1985)
Gail Aidinoff Scovell & Edward P. Scovell Fund (1986)

Sea Cliff Fund (1986)
Seal Point Foundation (1966)
Sealion Charitable Fund (1998)
Eleanor T. Seidel Memorial Fund (1984)
Selby/Vail Fund (2001)
Mamie Seller Memorial Fund (1978)
Jerome & Joan Serchuck Fund (1971)
Alfred M. Serex Fund (1999)
J. Walter & Helen C. Severinghaus Fund (1988)
William H. Seward, Jr. Fund (1962)
*Shah-Domenicali Family Fund (2005)
Harris Shapiro Fund (1996)
Shaw Foundation Fund (1964)
Shearman & Sterling Fund (1999)
Sheinberg Family Fund (1996)
Annette & William Sherman Fund (1999)
Lola J. Sherman Fund (1937)
Sherrow Family Fund (1998)
Jack & Dorothy Shulman Memorial Fund (1984)
Andrew Sidamon-Eristoff Fund (2003)
Catherine & Andrew Sidamon-Eristoff Family Fund (2001)
Elizabeth Sidamon-Eristoff Fund (2003)
Simon Sidamon-Eristoff Fund (2003)
Siebert Family Fund (2001)
Jayne M. Silberman Fund (1986)
Lois & Samuel Silberman Building Fund (1992)
Lois & Samuel Silberman Charitable Fund (1993)
Lois & Samuel Silberman Grant Fund (1992)
Ruth & Marvin Silberman Memorial Fund (1967)
Al & Rosa Silverman Fund (1994)
Alan Silverman Fund (2004)
Marty & Dorothy Silverman Fund (2001)
Arlene B. Simon Fund (1986)
Suzanne Cohn Simon Fund (2003)
Simpson Thacher & Bartlett Fund (1995)
Cecile Singer Fund (2000)
Stephen Sirkin Memorial Fund (1984)
Skilen Fund (1996)
Deborah A. Smith Fund (1986)
Jacqueline & Albert Smith Fund (1993)
Jeffrey R. Smith Memorial Scholarship Fund (2001)
Richard L. Snyder Fund (1991)
Laura Solinger Fund (1993)
L. & S. Soll Fund (1998)
David & Nancy Solomon Fund (2000)
Hannah Fox Solomon Fund (2002)
Solow Foundation Philanthropic Fund (1988)
Abe, Lena & Irin Soskis Memorial Fund (1984)
Abe, Lena & Irin Soskis Memorial Fund No. 2 (1985)
Fernando Soto, Jr. Fund (2000)
Alireza Soudavar Fund (1986)
Mammadi Soudavar Memorial Fellowship Fund (1982)
Patricia & Michael Sovern Fund (2003)
Rose M. Soybel Rose Garden Fund (1997)
Carol & Charles Spaeth Memorial Fund (1986)
Special Fund No. 11 (1968)
Special Fund No. 14 (1950)
Special Fund No. 20 (1962)
Tivy Spence Achievement Fund (1999)
Arthur L. Spencer Memorial Scholarship Fund (2002)
Sperry Van Ness/Joe French Endowment Fund (2004)
Marion R. Spinnler Education Fund (1970)
Squadron A Fund (1983)
Nicholas Warren Squires Family Fund (1991)

funds in 2005

Stack Family Fund (1994)
Stadler Fund (1997)
Ilma Stafford-Greene Fund (1977)
Alma Timolat Stanley Fund (1987)
Ruth & Frank Stanton Fund (1973)
Starry Night Fund (1998)
Stars & Stripes Fund (1988)
Betty J. Stebman Fund (2003)
*Steinberg Charitable Fund (2005)
Albert & Marie Steinert Fund (1991)
Chris Stemland Fund (1991)
Stephens Bequest (1942)
Sterling Fund (1985)
Henry J. Stern & Robert F. Wagner, Jr. Fund (1982)
Ettie Stettheimer Memorial Fund (1960)
Mrs. John Stevenson Fund (1986)
Gertrude Stewart Memorial Scholarship Fund (1971)
Kate H. Stiassni Fund (1999)
Stonehome Fund (1956)
Barnard Sachs Straus Fund (1986)
Edward K. Straus Fund (1951)
Stronach-Buschel Fund (1995)
Stroock Spirit of New York Fund (2001)
Carole Stupell Travel Award Program (2003)
Subia Fund (2004)
Sunrise Fund (1996)
Billy Sunshine Memorial Scholarship Fund (1985)
Surrogate's Court Fund (1991)
Robert J. Suslow Fund (1998)
Kelso F. & Joanna L. Sutton Fund (1998)
R. Swayze Gay & Lesbian Youth Fund (1996)
John & Devereux Swing Philanthropy Fund (1998)

T

Hazaros Tabakoglu Scholarship Fund (1994)
Robert A. Taft Institute of Government Trust (1969)
Peter Talbert Charity Fund (1999)
W. Pike Talbert Charitable Fund (1986)
James Talcott Fund (1974)
Helen S. Tanenbaum Fund (1954)
Helen S. Tanenbaum Award Fund (2004)
Nicki & Harold Tanner Fund (2001)
Rachel Tanur Memorial Fund (2002)
Dave Taylor Memorial Fund (1995)
William J. Taylor Fund (1939)
TechnoServe Fund (1993)
William Clark Terry Scholarship Fund (1983)
*Ethel & Dominick Tesoriero Charitable Fund (2005)
*Thackeray Fund (2005)
Third Millennium Fund (1973)
Thomas Fund (1995)
Thomas COPD Fund (1996)
Marvin & Doris Thomas Fund (1996)
Grandchildren of Fred & Florence Thomases Fund (1999)
Judith Dana Thorne Fund (1990)
Nathan C. & Margaret Y. Thorne Fund (2004)
Nathan & Nicholas Thorne Fund (2003)
Olaf J. & Margaret L. Thorp Fund (1987)
316th Association Memorial Fund (1994)
316th Infantry Monument Fund (1969)
Three Ninety Fund (1972)
Maria & William Thurnauer Fund (1983)
George H. & Elizabeth E. Tilghman Fund (2004)
Nancy H. Tilghman Fund (1999)

Jane M. Timken Charitable Fund (1987)
Tisser Family Fund (1998)
Tobacco Pink Fund (1977)
Carol H. Tolan Fund (1997)
Nathaniel & Sarah Tooker Fund (1972)
Tor Family Fund (1999)
Arnold & Caren Toren Fund (2004)
Raymond & Beverly Tower Fund (1997)
Town Hill School Fund (1993)
Tozer Family Fund (1987)
Traer Fund (1976)
Charles Welford Travis Trust (1981)
Trevor Fund (1986)
Harry D. Triantafillu Fund (1986)
Trinity Chapel Home Fund (1960)
Tripod Fund (1979)
Jean L. & Raymond S. Troubh Family Fund (1998)
John B. & Louisa S. Troubh Fund (1993)
*Elizabeth D. Trussell Fund (2005)
Turanski Family Compassionate Acceptance Fund (2004)
Turner Fund (1999)
*Christopher Turner & Tracy Turner Charitable Fund (2005)
Paul N. Turner Bequest (1960)
Twenty-First Century Fund (1981)
Charles P. Twichell Fund (1995)
Two Kids from the Bronx Fund (1986)

U

Beth M. Uffner Arts Fund (1998)
Don & Patricia Underwood Fund (2003)
United Way Humancare Fund (1984)

V

Vacolo Fund (2000)
Gilad Vaday Fund (2000)
Anne van Biema Fund (1996)
van Hengel Family Fund (1980)
Edward & Sally Van Lier Fund (1988)
Lottie Grace Vanderveer Fund (2003)
Lottie Grace Vanderveer Fund for Saranac Lake High School (2003)
Vaughan/Winton Fund (1995)
Nancy Veith Fund (2003)
Lillian Vernon Foundation Fund (2001)
Nicholas M. & Susan J. Verrastro Memorial Scholarship Fund (1998)
Rudolf & Anna Marie Vetter Memorial Fund (1977)
R.G. Vialut Family Fund (1999)
Viburnum Trilobum Fund (2003)
*Anna Glen Butler Vietor Memorial Fund (2005)
John L. Vigorita, M.D. Memorial Fund (1991)
Vital Projects Fund (1977)
Vo Van Jacques & Thai Thi Tam Memorial Fund (2004)
David & Johanna Voell Family Fund (2001)
Gregory & Elyzabeth Voell Family Fund (2001)
Jeffrey Voell Family Fund (2001)
Richard & Virginia Voell Family Fund (1986)
Hans A. Vogelstein Memorial Scholarship Fund (1982)
Mrs. Claus von Bulow Fund (1971)
Enders M. Voorhees Fund (1973)

W

Marian Marcus Wahl Memorial Fund (1985)
Walker Fund (2003)
Bayard Walker, Jr. Charitable Fund (2003)

*J. Miller Walker Fund (2005)
 Julia & Carter Walker Fund (1997)
 Walker-Pratt Family Fund (2003)
 Wallace Education Fund (1988)
 Frederick J. & Theresa Dow Wallace Fund (1977)
 DeWitt Wallace New York Hospital Fund (1984)
 DeWitt Wallace St. Christopher's School Fund (1974)
 DeWitt Wallace Youth Travel Enrichment Fund (1982)
 Lila Acheson Wallace Theater Fund (1984)
 Theresa Dow Wallace Scholarship Fund (1975)
 Wallace Special Projects Fund (1991)
 Waller-Davidson Fund (1980)
 Anthony W. & Lulu C. Wang Fund (1996)
 N.T. & Mabel Wang Charitable Fund (2004)
 Moritz & Charlotte Warburg Memorial (1925)
 David Warfield Funds (1951)
 David & Mary Warfield Funds (1973)
 Mary Warfield Fund (1971)
 Bradford A. & Nancy H. Warner Fund (1985)
 Watcha Fund (1988)
 Wattles Family Charitable Trust Fund (1981)
 Alice W. Wattles Fund (1974)
 James Howard Wattles Fund (1947)
 Samuel Hughes Watts Memorial Fund (1973)
 Weber Family Fund (2002)
 *Damon Weber Fund (2005)
 Weigel Family Fund (1999)
 Karl & Vally Weigl Fund (1980)
 John L. Weinberg Family Fund (2003)
 *Seymour & Kathleen Weingarten Fund (2005)
 Seymour & Rose Weinstock Fund (1999)
 Weintz Family Foundation (1980)
 Weintz Family Fund (1995)
 Mabel W. Weir Trust (1978)
 Nathan H. Weiss Memorial Fund (1999)
 Rebecca & Nathan Weiss Fund (1997)
 WellMet Group Fund (1999)
 Wellsford Charitable Fund (2000)
 William E. Welsh Jr. Family Fund (1978)
 West End Road Fund (1988)
 Herbert B. West Fund (1989)
 Wheeler Fund (1992)
 Betty Wheeler Fund (1991)
 Letitia M. Whipp Memorial Fund (1972)
 Bill Whitehead Award Fund (1993)
 Edward B. Whitney Fund (1986)
 Frederic J. Whiton Fund (1960)
 Wiccopee Fund (1986)
 Mary L. Wiener/Sanford M. Cohen Fund (1986)
 Stephen R. Wiener Fund (1997)
 Jeremy Wiesen Fund (1985)
 Carleton Wiggins & Donald Bain Trust (1982)
 Donna Bain Wiggins Trust (1982)
 Robert O. Wilder Fund (1989)
 Mason Wiley Memorial Fund (1995)
 Cynthia & Alan Wilkinson Fund (2003)
 Henry K. S. Williams Trust No. 1 (1944)
 Henry K. S. Williams Trust No. 2 (1944)
 Mildred Anna Williams Fund (1940)
 Oscar Williams & Gene Derwood Fund (1971)
 Robert I. Williams Fund (1996)
 Sarah Williams & Andrew Kimball Fund (1999)
 Bruce & Alison Williamson Fund (1998)
 Douglas Williamson Fund (1997)
 Willkie Farr & Gallagher Fund (1984)
 Sam Wilner Fund (1997)
 John H. T. Wilson Fund (1988)
 William Ross Reid Wilson Memorial Fund (1991)
 Wilton-Risdon Fund (1994)
 Wiltwyck School Fund (1988)
 Wind Down Fund (1989)
 Windie Knowe Fund (2003)
 Windsor Fund (1977)
 Jay Winston Scholarship Fund (1997)
 John Winston Fund (1999)
 Winterer Fund (1986)
 Winthrop Family in America Fund for Groton Church (1982)
 John Winthrop Fund (1970)
 Margaret S. Winthrop Fund (1972)
 Leone Scott Wise Fund (1986)
 Witches' Fund (1998)
 Witkin Family Fund (1988)
 Kate & Richard Witkin Fund (1988)
 Joanne Witty & Eugene Keilin Fund (1986)
 C. Theodore Wolf & Francis X. Decolator II Fund (1996)
 Ross Wollen Charitable Fund (1997)
 Wood Thrush Fund (2004)
 World Trade Center Hoboken Memorial Scholarship Fund (2002)
 World-Wide Fund (2002)
 World-Wide Holdings, Inc. Fund (2002)
 Clara Kennon Worley Fund (1973)
 Worth Fund (1992)
 Wray Family Fund (1986)
 *Thomas & Maureen Wright Family Fund (2005)
 Seymour B. Wurzler Bequest (1963)
 Thomas H. Wyman Family Fund (2002)

Y

J. Ernest Grant Yalden Memorial Fund (1956)
 Yamin Family Fund (1994)
 Yancey Family Fund (1986)
 Yaseen Lectures on the Fine Arts (1971)
 Samuel McC. & Lizora M. Yonce Fund (1986)
 You Can't Take It With You Fund (1986)
 H. R. Young & Betty G. Young Fund (1979)
 Nancy Young & Paul B. Ford, Jr. Fund (1986)
 Thomas & Elsie Young Fund (2000)
 Stephane Yulita Children's Fund (1989)
 Stephane Yulita & Inge Kadon Fund (2000)

Z

Judith & Stanley Zabar Fund (1993)
 John & Catherine Zacharias Family Fund (2003)
 Eileen E. Zaglin Scholarship Fund (1993)
 Steve Zang Fund (1999)
 Zimmerman Family Fund (2002)
 Joel Zimmerman Fund (1996)
 Zofnass/Ring Family Fund (1991)
 ZPM Fund (1986)

*Fund started in 2005

grants in 2005

The organizations listed below received grants of more than \$20,000. Included in the list are grantees specifically recommended by advisors to individual funds. Organizations are in New York unless otherwise indicated.

A

Ackerman Institute for the Family, \$16,020
Abington School District Educational Foundation (Pa.), \$400,000
Academy of American Poets, \$30,000
Academy of Our Lady of Good Counsel, \$42,125
Ackerman Institute for the Family, \$32,350
ACORN, \$20,000
Adaptive Design Association, \$34,500
Adelphi University, \$1,006,500
Adirondack Historical Association, \$32,950
Administration for Children's Services, \$49,000
Adventure Unlimited (Colo.), \$337,000
Advocates for Children of New York, \$106,700
Africare (D.C.), \$27,000
AFS-USA, \$391,020
Agenda for Children Tomorrow, \$61,253
Agnes Scott College (Ga.), \$22,500
Aid for AIDS, \$35,000
Akiba-Schechter Jewish Day School (Ill.), \$65,000
Al Koran Temple Crippled Children's Transportation Fund (Ohio), \$27,500
Albert Einstein College of Medicine of Yeshiva University, \$31,000
Alcoholism Council/Fellowship Center, \$32,000
Ali Forney Center, \$50,500
Alianza Dominicana, \$40,000
Alliance for the Arts, \$51,000
Alliance for Justice (D.C.), \$45,200
Alliance for Lupus Research, \$30,000
Alliance to Protect Nantucket Sound (Mass.), \$100,000
Alzheimer's Disease & Related Disorders Association (Ill.), \$63,750
Ambulatory Pediatric Association (Va.), \$150,000
American Academy in Rome, \$284,170
American Bar Association Fund for Justice & Education (D.C.), \$100,000
American Cancer Society Eastern Division, \$64,665
American Civil Liberties Union Foundation, \$26,860
American Dental Association Health Foundation (Ill.), \$25,000
American Farmland Trust (D.C.), \$60,100
American Federation for Aging Research, \$53,000
American Friends of the Hebrew University, \$74,985
American Friends Service Committee, \$142,810
American Friends of Tel Aviv University, \$43,000
American Fund for the Tate Gallery, \$30,000
American Heart Association, Heritage Affiliate, \$325,310
American Heart Association, New York State Affiliate, \$31,340
American Hospital of Paris Foundation, \$100,500
American Institute for Foreign Study Foundation (Conn.), \$59,000
American Institute for Social Justice (D.C.), \$20,000
American Jewish Committee, \$685,600
American Jewish World Service, \$30,052
American Judicature Society (Iowa), \$25,000
American Lung Association of New York State, \$60,000
American Museum of Natural History, \$338,306
American Opera Projects, \$21,000
American Prospect (Mass.), \$750,250
American Red Cross, Dutchess County Chapter, \$35,000
American Red Cross in Greater New York, \$303,280
American Red Cross/National Headquarters (D.C.), \$223,765
American Red Cross, Westchester Chapter, \$103,460
American Rivers (D.C.), \$80,100
Amer. Soc. of the Most Venerable Order of the Hosp. of St. John of Jerusalem, \$22,100

American Society for the Prevention of Cruelty to Animals, \$138,310
American University of Beirut, \$30,890
American University in Cairo, \$307,500
Americans for Oxford, \$112,500
America's Second Harvest (Ill.), \$32,350
AMERINDA, \$50,000
Trustees of Amherst College (Mass.), \$90,121
Amnesty International of the USA, \$26,925
Anchor, \$20,000
Andrews School (Ohio), \$90,000
Anti-Defamation League of B'nai B'rith, \$159,400
Apollo Theater Foundation, \$60,500
Appalachian Community Fund (Tenn.), \$250,000
Appeal of Conscience Foundation, \$25,000
Arab-American Family Support Center, \$40,000
Arcadia University (Pa.), \$45,000
Arthritis Foundation, New York Chapter, \$52,300
Arts Council of Princeton (N.J.), \$500,000
Asia Foundation (Calif.), \$75,000
Asia Society, \$87,170
Asian American Legal Defense & Education Fund, \$25,000
Asian American Writers' Workshop, \$20,000
Asphalt Green, \$58,100
Association of the Bar of the City of New York Fund, \$60,200
Association of Graduates, \$61,000
Association for Neighborhood & Housing Development, \$75,000
Atlas Performing Arts Center (D.C.), \$20,000
Auburn Theological Seminary, \$55,600
Audubon Partnership for Economic Development LDC, \$30,000
Auschwitz Jewish Center Foundation, \$50,000
Avon Old Farms School (Conn.), \$60,500

B

Baldwin-Wallace College (Ohio), \$23,000
Ballet Hispanico of New York, \$64,200
Ballet Theatre Foundation, \$309,950
Bank Street College of Education, \$120,000
Bardavon 1869 Opera House, \$40,000
Barium Springs Home for Children (N.C.), \$88,540
Barnard College, \$31,750
Bernard M. Baruch College of CUNY, \$103,700
President & Trustees of Bates College (Maine), \$22,500
Baton Rouge Area Foundation (La.), \$74,425
Bay Shore Schools Arts Education Fund, \$25,000
Benjamin N. Cardozo School of Law, Yeshiva University, \$40,000
Bennington College Corporation (Vt.), \$89,975
Berea College (Ky.), \$33,850
Beth Israel Medical Center, \$167,800
Bethel Mission Station Church, \$20,000
Beyond Pesticides/National Coalition Against the Misuse of Pesticides (D.C.), \$75,000
Big Brothers/Big Sisters of New York City, \$61,902
Binding Together \$50,000
Bishop Ford Central Catholic High School, \$25,000
Black Spectrum Theatre Company, \$20,000
Boca Grande Health Clinic Foundation (Fla.), \$100,000
Boston Healthcare for the Homeless Program (Mass.), \$25,000
Bowdoin College (Maine), \$70,900
Boy Scouts of America, Greater New York Councils, \$128,310
Boy Scouts of America, Theodore Roosevelt Council, \$23,500
Boys' Club of New York, \$479,450
Boys & Girls Clubs of America, \$24,820
Boys & Girls Clubs of Northern Westchester, \$25,250
Boys & Girls Harbor, \$115,000
Boys Town Jerusalem Foundation of America, \$42,530
Brandeis University (Mass.), \$50,200
Branford Land Trust (Conn.), \$20,000
Brearley School, \$29,800

Brick Presbyterian Church, \$56,000
 Bridge Academy (Conn.), \$22,000
 Bridge Fund of New York, \$50,000
 Bridgeport Child Advocacy Coalition (Conn.), \$50,000
 Bridgespan Group (Mass.), \$300,000
 Brighton Neighborhood Association, \$40,000
 British Schools & Universities Foundation \$20,000
 Bronx Defenders, \$159,500
 Bronx Jewish Community Council, \$47,000
 Bronx River Alliance, \$28,000
 Bronxville Union Free School District, \$200,000
 Brookings Institution (D.C.), \$20,000
 Brooklyn Academy of Music, \$35,500
 Brooklyn Botanic Garden Corporation, \$22,870
 Brooklyn Charter School, \$100,000
 Brooklyn Children's Museum Corporation, \$65,800
 Brooklyn College Foundation, \$248,500
 Brooklyn Cooperative Federal Credit Union, \$35,000
 Brooklyn Economic Development Corporation, \$60,000
 Brooklyn Education Collaborative, \$50,000
 Brooklyn Legal Services Corporation A, \$45,450
 Brooklyn Museum, \$134,090
 Brooklyn Public Library Foundation, \$65,650
 Brooklyn Youth Chorus, \$30,600
 Brooks School (Mass.), \$250,450
 Brookville Reformed Church, \$20,000
 Brown University (R.I.), \$261,800
 Bruce Museum Inc. (Conn.), \$22,200
 Bryn Mawr College (Pa.), \$23,700
 Buckley School, \$69,400
 Builders for the Family & Youth of the Diocese of Brooklyn, \$50,000
 Burden Center for the Aging, \$50,750
 Business Council for International Understanding, \$22,200
 Business Executives for National Security Education Fund (D.C.), \$25,000
 Business Outreach Center Network, \$91,000
 Buxton School (Mass.), \$36,200

C

CAF America (Va.), \$50,000
 Calvary Hospital, \$109,450
 Campaign for Fiscal Equity, \$120,000
 Cancer Care, \$752,750
 Cancer Research Institute, \$299,950
 Canine Companions for Independence (Calif.), \$90,300
 Canterbury School (Conn.), \$500,000
 Capoeira Foundation, \$60,000
 Caramoor Center for Music & the Arts, \$34,830
 Cardinal's Appeal, New York, \$20,000
 CARE USA Northeast Region, \$63,570
 Career Gear, \$50,000
 Careers Through Culinary Arts Program, \$110,500
 Carnegie Hall Society, \$54,415
 Carnegie Mellon University (Pa.), \$33,000
 Casa Betsaida, \$35,000
 CAST Resources (Mass.), \$25,000
 Catholic Charities Community Services, Archdiocese of New York, \$59,380
 Catholic Charities of the Diocese of Rockville Centre, \$40,000
 Catholic Relief Services of the U.S. Catholic Conference (Md.), \$40,730
 Catholic Schools Foundation (Mass.), \$55,000
 Cave Canem Foundation, \$30,000
 Cedars of Marin (Calif.), \$500,000
 Center for Alternative Sentencing & Employment Services, \$81,000
 Center for American Progress (D.C.), \$501,450
 Center for Arts Education, \$103,000
 Center for Clean Air Policy (D.C.), \$75,000
 Center for Defense Information (D.C.), \$65,600

Center for Family Services of Palm Beach County (Fla.), \$50,000
 Center for Health, Environment & Justice (Va.), \$75,000
 Center for International Environmental Law (D.C.), \$50,000
 Center for Investigative Reporting (Calif.), \$33,000
 Center for Khmer Studies, \$34,000
 Center for a New American Dream (Md.), \$65,250
 Center for Public Integrity (D.C.), \$69,200
 Center for Reproductive Rights, \$75,600
 Center for Resource Solutions (Calif.), \$75,000
 Center for Security Policy (D.C.), \$25,000
 Center for Spiritual Exchange, \$35,000
 Center for Strategic & International Studies (D.C.), \$30,000
 Center for Women & Families of Eastern Fairfield County (Conn.), \$35,000
 Central American Refugee Center, \$34,500
 Central Park Conservancy, \$375,005
 Century Foundation, \$500,000
 Ceres (Mass.), \$75,000
 Chapin School, \$47,575
 Charles B. Wang Community Health Center, \$20,000
 Chatham United Methodist Church (N.J.), \$32,000
 Cheshire Home (N.J.), \$25,000
 Chess-in-The-Schools, \$52,000
 Chhaya Community Development Corporation, \$40,000
 Child Care Council of Nassau, \$35,385
 Child Care Council of Westchester, \$149,853
 Child Welfare Organizing Project, \$95,500
 Children of Alcoholics Foundation, \$20,000
 Children, Incorporated (Va.), \$20,300
 Children's Aid Society, \$64,442
 Children's Defense Fund - New York (D.C.), \$66,252
 Children's Museum of the East End, \$37,750
 Children's Specialized Hospital Foundation (N.J.), \$28,000
 Children's Storefront, \$29,300
 Christ the King Church (Conn.), \$34,908
 Christodora, \$83,000
 Church Avenue Merchants Block Association, \$60,000
 Citizens Advice Bureau, \$139,000
 Citizens Budget Commission, \$52,275
 Citizens' Committee for Children of New York, \$43,500
 Citizens' Environmental Coalition, \$100,000
 Citizens for NYC, \$21,100
 Citizens Union Foundation of the City of New York, \$73,200
 City Center 55th Street Theater Foundation, \$242,500
 City Futures, \$70,000
 City Harvest, \$58,200
 City Parks Foundation, \$39,136
 City Squash, \$30,250
 City University of New York, \$250,000
 City of White Plains, \$50,000
 Citymeals-On-Wheels, \$178,150
 Clarke School for the Deaf (Mass.), \$44,000
 Classical America, \$40,000
 Clean Air Task Force (Mass.), \$100,000
 Clean Energy Group (Vt.), \$150,000
 Clean Water Fund (D.C.), \$25,000
 Cleveland Clinic Foundation (Ohio), \$51,000
 Coalition for Medically Fragile Children, \$70,000
 Coalition for the Homeless, \$29,000
 Cold Spring Harbor Laboratory, \$225,940
 College Careers Fund of Westchester, \$29,860
 College of Wooster (Ohio), \$20,805
 Collegiate School, \$41,100
 Colorado College, \$65,250
 Colorado State University, \$25,000
 Trustees of Columbia University in the City of New York, \$458,830
 Columbia University, College of Physicians & Surgeons, \$224,570
 Columbia University, Graduate School of Arts & Sciences, \$23,920

grants in 2005

Columbia University, Mailman School of Public Health, \$185,000
Coming Clean (Ky.), \$75,000
Coming Together Project (Ohio), \$50,000
Commission on the Public's Health System \$45,000
Committee for Economic Development (D.C.), \$25,000
Common Cause Education Fund (D.C.), \$60,400
Common Good Institute, \$27,000
Common Ground Community Housing Development Fund Corporation, \$57,900
Community Action Project, \$20,000
Community Foundation of Acadiana (La.), \$25,000
Community Foundation of Greater Birmingham (Ala.), \$25,000
Community Foundation of Greater Jackson (Miss.), \$25,800
Community Foundation for Palm Beach & Martin Counties (Fla.), \$53,000
Community Foundation of South Alabama, \$25,000
Community Impact, \$45,000
Community Resource Exchange, \$70,300
Community Rowing (Mass.), \$250,000
Community Service Society of New York, \$100,510
Community Voices Heard, \$50,000
Community-Word Project, \$20,000
Compassion & Choices of New York, \$26,850
Concern Worldwide U.S., \$20,000
Concert Artists Guild, \$39,000
Concord Coalition Corp (Va.), \$66,250
Congregation Emanuel of the City of New York, \$25,910
Congregation Or Zarua, \$35,000
Congregation Rodeph Sholom, \$51,729
Congregations Linked in Urban Strategy to Effect Renewal, \$40,000
Conservation Fund (Va.), \$50,000
Consortium for Conservation Medicine, \$60,000
Constituency for Africa (D.C.), \$40,000
Constitutional Education Foundation, \$50,000
Co-op America Foundation (D.C.), \$63,800
Cooper Union for the Advancement of Science & Art, \$71,300
Cornell University, \$202,000
Cornell University College of Veterinary Medicine, \$33,500
Correctional Association of New York, \$60,000
Council on Foreign Relations, \$184,200
Council on Foundations (D.C.), \$44,600
Council of International Programs USA (Ohio), \$20,000
Council of Peoples Organization, \$20,000
Council for Secular Humanism, \$95,000
Court Appointed Special Advocates (CASA), \$35,900
Covenant House New York, \$60,800
Credit Where Credit Is Due, \$50,000
Crippled Children's Hospital Foundation (Tenn.), \$88,540
Crossnore School (N.C.), \$88,540
Croton-Harmon Union Free School District, \$25,000
Culver Education Foundation (Ill.), \$200,000
Cystic Fibrosis Foundation, Greater New York Chapter, \$33,050

D

Dalton School, \$197,450
Dance Continuum, \$30,000
Dance Space Center, \$200,000
Dance Theater Workshop, \$90,750
Danspace Project, \$141,000
Dartmouth College (N.H.), \$177,030
DeCordova Museum & Sculpture Park (Mass.), \$337,450
Denan Project (Conn.), \$25,000
Denison University (Ohio), \$200,000
Dialogue Project, \$40,000
Diocese of Helena, Montana, \$170,000
Direct Relief International (Calif.), \$60,500
Directions For Our Youth, \$50,000
Doctors of the World - U.S.A., \$45,000
Doctors without Borders U.S.A. \$353,637

Doe Fund, \$92,000
DonorsChoose, \$80,000
The Door - A Center of Alternatives, \$65,000
DreamYard Drama Project, \$70,000
Dress for Success Worldwide, \$50,000
Drisha Institute for Jewish Education, \$41,000
Duke University (N.C.), \$41,300
Dvorak American Heritage Association, \$35,000

E

E. Monte Motion, \$55,000
Earth Share (Md.), \$50,000
Earthwatch Expeditions Inc. (Mass.), \$25,000
East End Hospice, \$21,700
East Harlem Tutorial Program, \$32,900
Ecclesia Ministries (Mass.), \$50,500
Echoing Green Foundation, \$300,000
Education Development Center (Mass.), \$25,000
Education & Research Foundation of the Better Business Bureau Metro NY, \$47,000
Educational Broadcasting Corporation/Channel 13, \$315,330
Edward M. Kennedy Center for the Study of the U.S. Senate (D.C.), \$50,000
Edwin Gould Services for Children & Families, \$250,500
Elaine Kaufman Cultural Center/Lucy Moses School for Music & Dance, \$61,250
Eldridge Community Development (Ala.), \$35,000
Eldridge Street Project, \$34,000
Elmira College, \$40,000
Empire State College Foundation, \$72,500
EMS/Science Communication Network (D.C.), \$75,000
Endeavor Initiative, \$162,600
Endometriosis Association (Wis.), \$40,000
Enrichment Audio Resource Services, \$60,000
Ensemble Pi, \$34,225
Ensemble Studio Theatre, \$90,000
Enterprise Corporation of the Delta (Miss.), \$102,000
Environmental Advocates of New York \$87,280
Environmental Defense, Incorporated, \$91,230
Environmental & Energy Study Institute (D.C.), \$100,000
Environmental Health Fund (Mass.), \$50,000
Environmental Law & Policy Center (Ill.), \$25,000
Environmental Working Group (D.C.), \$79,600
Episcopal Social Services of New York, \$20,290
Equality Now, \$75,000
ERASE Racism, \$176,900
Erasmus Neighborhood Federation, \$40,000
Esperanza del Barrio, \$30,000
Eviction Intervention Services Homelessness Prevention, \$40,200
Exodus Transitional Community, \$242,000

F

Facing History & Ourselves National Foundation (Mass.), \$154,400
Fairfield County Community Foundation (Conn.), \$1,700,000
Family Centers (Conn.), \$29,500
Family & Children's Association, \$380,000
Family Service League of Suffolk County, \$60,725
Family Service of Westchester, \$59,900
Family YMCA at Tarrytown, \$25,100
Farms for City Kids Foundation, \$25,000
F.D. Barstow Memorial School (Vt.), \$25,000
Federation of Protestant Welfare Agencies, \$36,100
Fessenden School (Mass.), \$150,000
Field of Dreams Project, \$20,000
Film Society of Lincoln Center, \$28,000
First Congregational Church (N.J.), \$25,000
First Congregational Church of Westfield (N.J.), \$35,000
First Nations Development Institute (Colo.), \$150,000
Fisk University (Tenn.), \$40,500

Fitzie Foundation (Mass.), \$50,000
 Flatbush Development Corporation, \$35,000
 Fletcher Allen Health Care (Vt.), \$26,000
 Flushing Council on Culture & the Arts, \$50,000
 Food Bank for New York City, Food for Survival, \$140,300
 Fordham University, \$114,550
 Forest Hills Community House, \$40,000
 Forest Stewardship Council U.S. (D.C.), \$75,000
 Fortune Society, \$107,970
 47 Palmer Inc. (Mass.), \$30,000
 Foundation for Dance Promotion, \$68,000
 Foundation for Independent Video & Film, \$23,600
 Foundation for the Mid South (Miss.), \$50,000
 Foundation of Women Executives in Public Relations, \$30,000
 Fountain House \$49,150
 Francis J. Logan, Jr. Foundation, \$25,000
 Franklin & Marshall College (Pa.), \$31,100
 Frederick Douglass Academy, \$32,000
 Freer Gallery of Art of the Smithsonian Institution (D.C.), \$91,980
 Fresh Air Fund, \$90,538
 Frick Collection, \$197,160
 Friends of Gateway, \$30,000
 Friends of the German Historical Institute (D.C.), \$30,000
 Friends of Island Academy, \$50,500
 Friends of Materials for the Arts, \$60,000
 Friends & Relatives of Institutionalized Aged, \$50,000
 Friends of the Saint Andrew's School Foundation, \$20,000
 Friends School of Baltimore (Md.), \$80,000
 FSH Society (Mass.), \$50,000
 Fund for the City of New York, \$181,250
 Fund for Public Health in New York, \$435,000
 Fund for Public Schools, \$41,500
 Fund for Social Change, \$84,000
 Funders' Network for Smart Growth & Livable Communities (Fla.), \$85,000

G

Gay Men of African Descent, \$35,300
 Gay Men's Health Crisis, \$111,050
 George School (Pa.), \$20,800
 Georgetown University (D.C.), \$28,625
 Georgia State University Foundation, \$25,000
 Gerontological Society of America (D.C.), \$35,000
 Getting the Word Out, \$25,000
 Gillen Brewer School, \$20,000
 Girl Scout Council of Greater New York, \$62,375
 Girls for Gender Equity, \$20,000
 Girls Incorporated, \$28,751
 Girls Incorporated of New York City, \$50,000
 Give2Asia (Calif.), \$83,670
 Glimmerglass Opera, \$84,750
 Global Fund for Children (D.C.), \$25,000
 Global Heritage Fund (Calif.), \$58,000
 Global Kids, \$97,000
 Goddard-Riverside Community Center, \$75,800
 Good Jobs First (D.C.), \$55,000
 Good News Partners (Ill.), \$30,000
 Good Samaritan Hospital Foundation, \$50,000
 Good Shepherd Services, \$75,250
 Grace Church of Brooklyn Heights, \$31,500
 Grace Church Community Center, \$42,080
 Graduate Center Foundation, \$28,500
 Grameen Foundation USA (D.C.), \$934,000
 Grandfather Home for Children (N.C.), \$88,540
 Grassroots Environmental Education, \$25,000
 Greater Centennial Community Development Corporation, \$50,000
 Greater Jamaica Development Corporation, \$40,000
 Greater New Orleans Foundation (La.), \$55,950

Greater Newark Conservancy (N.J.), \$210,000
 Greater Yellowstone Coalition (Mont.), \$78,000
 Greenbelt Conservancy, \$40,150
 Greenburgh Nature Center, \$20,000
 Greens Farms Academy (Conn.), \$56,000
 Greenwich Academy (Conn.), \$20,000
 Greenwich Hospital Association (Conn.), \$38,340
 Greenwich Library (Conn.), \$50,000
 Greenwich Village Youth Council, \$50,000
 Greyston Foundation, \$25,500
 Griot Circle, \$35,000
 Groton School (Mass.), \$70,950
 Groundwork Incorporated, \$90,000
 Grymes Memorial School (Va.), \$30,000
 John Simon Guggenheim Memorial Foundation, \$50,000
 Guild Hall of East Hampton, \$40,195
 Gulf Coast Community Foundation (Miss.), \$28,000

H

Habitat for Humanity of Greater Bridgeport (Conn.), \$100,250
 Habitat for Humanity International (Ga.), \$31,970
 Halcyon Foundation, \$20,000
 Hamilton College, \$72,750
 Hancock Shaker Village (Mass.), \$55,000
 Hands On Worldwide (Mass.), \$25,000
 Harlem Children Society, \$75,000
 Harlem Day Charter School, \$100,000
 Harlem RBI Incorporated, \$25,200
 President & Fellows of Harvard College (Mass.), \$3,053,080
 Harvard University Medical School (Mass.), \$91,000
 Corporation of Haverford College (Pa.), \$30,500
 Hazelden Foundation (Minn.), \$50,000
 Head-Royce School (Calif.), \$20,000
 Health & Welfare Council of Long Island, \$70,200
 Healthy Schools Network, \$50,250
 HeartShare Human Services of New York, Roman Catholic Diocese of Brooklyn, \$54,000
 Hebrew Home for the Aged at Riverdale, \$58,000
 Helen Keller Services for the Blind, \$40,050
 Helping Out People Everywhere, \$25,000
 Hempstead Boys & Girls Club, \$25,000
 Henry Street Settlement, \$142,470
 Herbert G. Birch Services, \$27,000
 Herbert H. Lehman College Foundation, \$81,500
 Herstory Writers Workshop, \$38,150
 HIAS, \$40,200
 Hicksville Youth Council, \$30,000
 Highbridge Community Life Center, \$503,265
 Hillel: Foundation for Jewish Campus Life (D.C.), \$207,400
 Hip's Road, \$20,000
 Hispanic Federation, \$120,000
 Historic Districts Council, \$130,100
 Historic Hudson Valley, \$29,538
 Hofstra University, \$571,760
 Hope Program, \$62,250
 Hopkins Committee of Trustees (Conn.), \$41,000
 Hospice Care Network, \$26,750
 Hospital for Joint Diseases Orthopaedic Institute, \$78,650
 Hospital for Special Surgery, \$43,200
 Hostos Center for the Arts & Culture, \$45,000
 Hour Children, \$41,200
 Howard University (D.C.), \$102,000
 Hudson Guild, \$132,885
 Hudson Highlands Land Trust, \$25,000
 Hudson Valley Center for Contemporary Art, \$25,000
 Human Development Services of Westchester, \$75,850
 Human Rights First, \$35,750
 Human Rights Watch, \$187,850

grants in 2005

Human Services Council of New York City, \$50,000
Hunter College of CUNY/Bellevue School of Nursing, \$285,090
Hunter College Foundation, \$81,000

I

IAA Education Program, \$52,000
Independent Media Institute (Calif.), \$45,000
Indian Mountain School (Conn.), \$23,080
INFORM, \$37,100
inMotion, \$26,000
Inner-City Scholarship Fund, \$143,750
Institute for America's Future (D.C.), \$75,000
Institute for Contemporary Psychotherapy, \$70,000
Institute for International Economics (D.C.), \$400,000
Institute of International Education, \$85,764
Institute for Labor & the Community, \$60,000
Institute for Local Self-Reliance (D.C.), \$75,000
Institute for Rational Urban Mobility, \$43,610
Institute for Student Achievement, \$65,750
Institute for Urban Family Health, \$125,000
Interfaith Center of New York, \$27,290
Interfaith Nutrition Network, \$90,350
International AIDS Vaccine Initiative, \$575,000
International Center of Photography, \$60,000
International Federation of Red Cross & Red Crescent Societies, \$25,750
International Rescue Committee, \$436,035
International Social Service, United States of America Branch (Md.), \$78,810
International Tennis Hall of Fame (R.I.), \$35,800
International Women's Health Coalition, \$54,093
International Yacht Restoration School (R.I.), \$209,000
International Youth Leadership Institute, \$35,000
Intrepid Fallen Heroes Fund, \$72,500
IPAS (N.C.), \$50,000
Isamu Noguchi Foundation & Garden Museum, \$60,250

J

Jackson Memorial Foundation (Fla.), \$50,000
Jacob Burns Film Center, \$67,250
James Foundation, \$1,073,000
Japan Society, \$22,000
Jazz Forum Arts, \$20,000
Jazz Foundation of America, \$50,000
Jazz at Lincoln Center, \$135,700
Jericho Jewish Center, \$20,000
Jericho Project, \$25,500
Jewish Board of Family & Children's Services, \$111,330
Jewish Child Care Association of New York, \$21,500
Jewish Community Center on the Upper West Side \$20,000
Jewish Museum, \$176,875
Johns Hopkins University (Md.), \$889,425
Johns Hopkins University School of Medicine (Md.), \$83,000
Joint Action in Community Service (D.C.), \$44,000
Jose Limon Dance Foundation, \$90,000
Joyce Theater Foundation, \$25,058
Juilliard School, \$72,850
Julia Dyckman Andrus Memorial, \$25,000
Juvenile Diabetes Foundation International, \$51,550

K

Kenyon College (Ohio), \$30,500
Kids Way, \$25,000
King Manor Museum, \$21,600
Kings Majestic Corporation, \$25,000
Kipp, \$60,600
Knox School, \$97,500

L

La Jolla Music Society (Calif.), \$150,000
La Jolla Playhouse (Calif.), \$30,000
LAByrnth, \$90,000
Fiorello H. LaGuardia Community College of CUNY, \$20,000
Lance Armstrong Foundation (Tex.), \$100,000
Latin American Integration Center \$20,000
Lawrenceville School (N.J.), \$22,000
Lawyers Alliance for New York, \$90,000
Lawyers for Children, \$41,350
Lawyers Committee for Civil Rights Under Law (D.C.), \$25,100
League of Conservation Voters Education Fund (D.C.), \$104,800
League for the Hard of Hearing, \$50,850
Learning Leaders, \$114,150
Legal Aid Society, \$590,590
Legal Momentum, \$87,800
Legal Outreach, \$80,000
Legal Services for Children, \$46,000
Legal Services for New York City, \$80,000
Lehman College Center for the Performing Arts, \$40,000
Lenox Hill Hospital, \$24,400
Lenox Hill Neighborhood House, \$117,020
Leukemia & Lymphoma Society, \$24,120
Liberty Healthcare System Foundation (N.J.), \$25,000
Liberty Hill Foundation (Calif.), \$175,000
Library Association of La Jolla (Calif.), \$50,000
Lighthouse International, \$408,850
Lincoln Center for the Performing Arts, \$214,790
Littig House Community Center, \$20,000
Little Hill Foundation (N.J.), \$50,000
Local Initiatives Support Corporation, \$95,000
Lois & Samuel Silberman Fund, \$229,353
London School of Hygiene & Tropical Medicine, \$600,000
Long Island Cares, \$24,500
Long Island College Hospital, \$79,700
Long Island Educational Television Council, \$32,050
Long Island Fund for Sustainable Development, \$250,000
Long Island Fund for Women & Girls, \$74,600
Long Island Philharmonic, \$55,000
Long Island Progressive Coalition, \$35,000
Long Island Sound Partners, \$75,000
Long Island University, \$207,000
Long Term Care Community Coalition, \$50,000
Loomis Chaffee School (Conn.), \$25,800
Low Income Investment Fund (Calif.), \$54,000
Lower East Side Family Union, \$30,000
Lower East Side Tenement Museum, \$52,800
Lutheran Disaster Response of NY, \$48,000
Lutheran Family Community Services, \$50,000

M

Ma-Yi Theater Company, \$60,000
Madison Square Park Conservancy, \$60,000
Make a Wish Foundation of Metro New York, \$50,550
Mama Foundation for the Arts, \$20,000
Manhattan Eye, Ear & Throat Hospital, \$285,850
Manhattan Institute for Policy Research, \$27,250
Manhattan Theatre Club, \$106,250
Marine Corps Scholarship Foundation (N.J.), \$25,000
Marlboro School of Music (Pa.), \$110,000
Martha Entenmann Tinnitus Research Center (Vt.), \$75,000
Mary Louis Academy, \$175,000
Marymount Manhattan College, \$57,100
Massachusetts General Hospital, \$107,500
Massachusetts Institute of Technology, \$70,250
Massachusetts Society for Prevention of Cruelty to Children, \$55,000
Mayor's Fund to Advance New York City, \$225,250

MCIF Center, \$35,000
 McLean Hospital Corporation (Mass.), \$29,000
 Medical Education for South African Blacks (D.C.), \$144,600
 Medical & Health Research Association of New York City, \$86,100
 Meeting Street Center (R.I.), \$80,000
 MEM Associates, \$100,000
 Memorial Sloan-Kettering Cancer Center, \$101,390
 Memorial United Methodist Church, \$31,340
 Mentoring USA, \$58,000
 Metropolitan Council on Jewish Poverty, \$42,000
 Metropolitan Museum of Art, \$685,695
 Metropolitan Opera Association, \$617,005
 Mexican Educational Foundation of New York, \$20,000
 MFY Legal Services, \$50,000
 Middle Country Library Foundation, \$58,000
 President & Fellows of Middlebury College (Vt.), \$80,850
 Middlesex School (Mass.), \$25,500
 Midwood Development Corporation, \$40,000
 Millbrook School, \$25,100
 Miracle Corners of the World, \$69,000
 Mobility International USA (Oreg.), \$80,000
 Molloy College, \$21,000
 Montclair Art Museum (N.J.), \$50,000
 Montclair Volunteer Ambulance Unit (N.J.), \$30,000
 Montefiore Medical Center, \$31,000
 Montreat College (N.C.), \$88,540
 Morningside Retirement & Health Services, \$27,060
 Mosholu Montefiore Community Center, \$50,000
 Mothers on the Move, \$20,000
 Mount Hope Housing Company, \$35,000
 Mount Sinai Medical Center, \$171,750
 Mount Sinai School of Medicine, \$126,590
 Mount Vernon Public Schools, \$25,000
 Mountain Association for Community Economic Development (Ky.), \$75,000
 Mountainside Hospital Foundation (N.J.), \$50,000
 MOUSE, \$80,000
 Ms. Foundation for Women, \$30,000
 Mullen House Education Center (Mass.), \$50,000
 Multi-State Mercury Product Campaign (Wis.), \$70,000
 Multiple Sclerosis Resources of Central New York, \$30,000
 Municipal Art Society of New York, \$85,500
 Museum of the City of New York, \$33,700
 Museum of Fine Arts, Houston (Tex.), \$150,000
 Museum of Jewish Heritage, \$370,744
 Museum of Modern Art, \$325,290
 Museum of Television & Radio, \$125,000
 Music Conservatory of Westchester, \$23,550
 Muslim Women's Institute for Research & Development, \$25,000
 Mutual Housing Association of Southwestern Connecticut, \$50,000
 My Sister's Place (D.C.), \$26,000
 Myrtle Avenue Commercial Revitalization & Development Project LDC, \$30,000

N

Nah We Yone, \$40,000
 Nantucket Conservation Foundation (Mass.), \$251,000
 Nassau County Coalition Against Domestic Violence, \$55,750
 Nathaniel Wharton Fund for Research in Brain, Body & Behavior, \$50,000
 National Academy of Design, \$51,100
 National AIDS Fund (D.C.), \$25,000
 National Audubon Society, \$161,770
 National Center for Learning Disabilities, \$23,200
 National Dance Institute, \$34,700
 National Dental Association (D.C.), \$25,000
 National Family Planning & Reproductive Health Association (D.C.), \$40,000
 National Fish & Wildlife Foundation (D.C.), \$50,000

National Forest Foundation (Mont.), \$22,000
 National Foundation for Facial Reconstruction, \$71,300
 Natl. Fdn. for Teaching Entrepreneurship to Handicapped & Disadvantaged Youth, \$27,000
 National Multiple Sclerosis Society, \$28,490
 National Park Foundation (D.C.), \$30,250
 National Parks Conservation Association (D.C.), \$32,300
 National Rowing Foundation (Conn.), \$125,000
 Natural Resources Defense Council, \$158,630
 Nature Conservancy (Va.), \$448,950
 Nature Conservancy, Eastern New York Chapter, \$23,200
 Nature Conservancy New York, Long Island Chapter, \$42,500
 Naumburg Orchestral Concerts, \$49,600
 Neighborhood Economic Development Advocacy Project, \$50,000
 Neighborhood Housing Services of Jamaica \$40,000
 Neighborhood Housing Services of New York City, \$40,000
 Neighborhood Network Research Center, \$42,000
 Neighborhood Self-Help by Older Persons Project, \$40,000
 Neighbors Helping Neighbors \$35,000
 New Alternatives for Children, \$33,300
 New America Foundation (D.C.), \$551,000
 New Destiny Housing Corporation, \$50,000
 New Energy Foundation (N.H.), \$65,000
 New Group \$90,000
 New Israel Fund (D.C.), \$26,000
 New Jobs for New York, \$30,000
 New Leaders for New Schools, \$160,000
 New School, \$239,700
 New Song Urban Ministries (Md.), \$70,000
 New Visions for Public Schools, \$334,840
 New York Academy of Medicine, \$116,600
 New York ACORN Housing Company, \$40,000
 New York Botanical Garden, \$912,050
 New York Cares, \$28,400
 New York City Ballet, \$217,990
 New York City Financial Network Action Consortium, \$25,000
 New York City Gay & Lesbian Anti-Violence Project, \$40,300
 New York City Health & Hospitals Corporation, \$200,000
 New York City Mission Society, \$77,410
 New York City Opera, \$98,590
 New York Civil Liberties Union Foundation, \$54,950
 New York Eye & Ear Infirmary, \$23,000
 New York Hall of Science, \$65,700
 New York Historical Society, \$171,950
 New York Immigration Coalition, \$689,250
 New York Jobs With Justice, \$105,000
 New York Landmarks Conservancy, \$113,700
 New York Lawyers for the Public Interest, \$50,500
 New York League of Conservation Voters Education Fund, \$55,000
 New York Legal Assistance Group, \$50,000
 New York Medical College, \$20,000
 New York Open Center, \$928,000
 New York Police & Fire Widows' & Children's Benefit Fund, \$200,150
 New York-Presbyterian Hospital, \$504,550
 New York Public Library Astor, Lenox & Tilden Foundations, \$717,974
 New York Society for the Prevention of Cruelty to Children, \$87,000
 New York State Defenders Association, \$25,000
 New York State NARAL Foundation, \$60,450
 New York Theatre Workshop, \$61,250
 New York Times Neediest Cases Fund, \$23,400
 New York Unemployment Project, \$50,000
 New York University, \$191,100
 New York University, College of Dentistry, \$21,500
 New York University, Institute for Education & Social Policy, \$100,000
 New York University, School of Law, \$27,600
 New York University, School of Medicine, \$192,773

grants in 2005

New York University School of Medicine, Center for Immigrant Health, \$300,000
New York-Weill Cornell Medical Center Fund, \$2,567,100
New York Youth at Risk, \$40,100
New Yorkers for Accessible Health Coverage, \$75,000
New Yorkers for Parks, \$355,850
Newark Museum Association (N.J.), \$250,200
Newport Country Club Preservation Foundation (R.I.), \$50,000
Nicklaus Children's Health Care Fund (Fla.), \$45,000
92nd Street YM-YWHA, \$90,310
Nonprofit Finance Fund, \$457,500
North American Friends-Israel Oceanographic & Limnological Research, \$20,500
North Carolina State University, \$40,438
North Shore Board of the Northwestern University Settlement (Ill.), \$20,000
North Shore - Long Island Jewish Health System Foundation, \$234,750
Northern Manhattan Improvement Corporation, \$90,000
Northern Westchester Hospital Association, \$27,300
Northern Westchester Shelter, \$20,100
Northfield Community Local Development Corp of Staten Island, \$40,000
Northside Center for Child Development, \$287,075
Northwestern University (Ill.), \$431,950
New York Industrial Retention Network, \$35,000
NYCharities.org, \$50,000
NYSARC, Westchester Chapter, \$28,990
NYU Downtown Hospital, \$50,100

O

Oakland Volunteer Fire Department (N.J.), \$75,000
Ocean Reef Medical Center Foundation (Fla.), \$25,000
Oceana (D.C.), \$40,000
Office of the Appellate Defender, \$50,250
Ohel Children's Home & Family Services, \$25,200
Ohio State University, \$32,500
Ohio University Foundation, \$45,000
Old Dartmouth Historical Society/New Bedford Whaling Museum (Mass.), \$100,300
Open Door Family Medical Center, \$108,910
Operation Truth, \$50,000
Orthopaedic Scientific Research Foundation, \$100,000
Osborne Association, \$31,150
Ossining Union Free School District, \$50,000
Outreach Project, \$175,000
Overlook Hospital Foundation (N.J.), \$51,250
Oxfam America (Mass.), \$277,050

P

Pace University, \$59,050
Pace University School of Law, \$70,500
Pacific Council on International Policy (Calif.), \$25,500
Packer Collegiate Institute, \$51,000
Park Square Advocates (Mass.), \$100,500
Parodneck Fdn. for Self-Help Housing & Community Development, \$50,500
Parsons Dance Foundation, \$20,000
Partners in Health (Mass.), \$30,000
Partnership for After School Education, \$280,250
Pathfinder International (Mass.), \$33,000
Peconic Land Trust, \$106,500
Peer Health Exchange, \$20,000
Pelham Education Foundation, \$30,000
PEN American Center, \$95,900
Peninsula Community Foundation (Calif.), \$25,250
People for the American Way Foundation (D.C.), \$99,550
People of Color in Crisis, \$25,000
Phelps Memorial Hospital Center, \$26,000
Phi Beta Kappa Society (D.C.), \$55,507

Philharmonic-Symphony Society of N.Y., \$231,130
Physicians for Social Responsibility (D.C.), \$83,750
Pierpont Morgan Library, \$260,000
Pig Iron Theatre Company (Pa.), \$55,000
Pine Creek Valley Watershed Assoc. (Pa.), \$310,000
Planned Parenthood of Connecticut, \$49,500
Planned Parenthood Federation of America, \$30,400
Planned Parenthood Hudson Peconic, \$42,255
Planned Parenthood of Nassau County Foundation, \$127,075
Planned Parenthood of New York City, \$277,470
Planned Parenthood of Rhode Island, \$85,000
Point Community Development Corporation, \$90,000
Police Athletic League, \$36,300
Polytechnic Preparatory Country Day School, \$144,000
Pont-Aven School of Art (R.I.), \$21,000
Port Chester Carver Center, \$53,450
Port Washington Public Library, \$25,250
Portland State University (Oreg.), \$25,000
Portland Symphony Orchestra (Maine), \$30,000
Pratt Institute, \$139,200
Pregnancy Help, \$30,250
Prep for Prep, \$288,390
Presbyterian Church (U.S.A.) Foundation (Ind.), \$50,480
Presbytery of New York City, \$33,650
Princeton Theological Seminary (N.J.), \$25,000
Princeton University (N.J.), \$1,189,900
Pro Mujer, \$30,000
Project A.L.S., \$25,500
Project DOCC, \$80,000
Project Enterprise, \$26,820
Project GRAD Roosevelt, \$40,000
Project Reach Youth, \$34,250
Project Renewal, \$20,000
Prospect Park Alliance, \$118,300
Protestant Episcopal Cathedral Foundation of the District of Columbia, \$51,500
Public Agenda Foundation, \$20,000
Public Citizen Foundation (D.C.), \$22,730
Public Health Association of New York City, \$49,000
Public Health Research Institute of the City of New York (N.J.), \$172,000
Public Policy & Education Fund of New York, \$80,000
Public/Private Ventures (Pa.), \$134,000
Public Theater, \$143,300
Puerto Rican Legal Defense & Education Fund, \$70,000
Purchase College Foundation, \$53,040
Putnam Hospital Center, \$46,490

Q

Queens Child Guidance Center, \$70,000
Queens College of CUNY, \$50,010
Queens Legal Services Corporation, \$50,000
Queens Theatre in the Park, \$90,000
Queens University of Charlotte (N.C.), \$88,540
Quogue Free Library, \$20,000

R

Rabbi Issac Elchanan Theological Seminary, \$24,500
Rainforest Alliance, \$25,600
Ramapo for Children, \$20,030
Recording for the Blind & Dyslexic (N.J.), \$39,400
Reel Works Teen Filmmaking, \$20,000
Regional Aid for Interim Needs, \$25,000
Regional Plan Association, \$130,000
Regional YMCA of Western Connecticut, \$25,000
Renewable Energy Long Island, \$40,000
Replications, \$50,000
ReServe Elder Service, \$25,000
Resolve Community Counseling Center (N.J.), \$20,000

Resources for Children with Special Needs, \$78,000
Resources for the Future (D.C.), \$70,000
Restaurant Opportunities Center of New York, \$30,000
Restore America's Estuaries (Wash.), \$110,000
Rhode Island School of Design, \$602,000
Rhodes College (Tenn.), \$88,540
Richard Nixon Library & Birthplace Foundation (D.C.), \$25,000
Richmond Dance Ensemble, \$20,000
Rider University (N.J.), \$95,300
River Network (Oreg.), \$50,000
Riverside Park Fund, \$38,100
Riverview Foundation (N.J.), \$51,500
Robin Hood Foundation, \$123,750
Rockefeller University, \$47,625
Rocking the Boat, \$90,000
Rocky Mountain Energy Campaign (Colo.), \$60,000
Roundabout Theatre Company, \$29,980
RTA Incorporated (Conn.), \$122,000
Rural School & Community Trust (Va.), \$75,000
Rutgers, The State University of New Jersey, \$41,500
Rutgers University Foundation (N.J.), \$24,750

S

Sadie Nash Leadership Project, \$70,000
Safe Space, \$195,000
St. Andrew's Presbyterian College (N.C.), \$88,540
St. Anthony High School, \$30,000
St. Barnabas Development Foundation (N.J.), \$25,360
St. Barnabas Hospice & Palliative Care Center (N.J.), \$50,000
St. Christopher's, \$32,780
St. John's University, \$76,500
St. Joseph's Center of Scranton (Pa.), \$20,000
St. Joseph's Church, \$20,000
St. Jude Children's Research Hospital - ALSAC (Tenn.), \$96,590
St. Luke's Chamber Ensemble, \$50,000
St. Luke's Roosevelt Hospital Center, \$44,070
St. Mary's Foundation for Children, \$971,000
St. Michael's Independent School (Fla.), \$250,000
St. Paul's Center of New York, \$57,500
St. Paul's Evangelical Lutheran Church, \$24,000
St. Peter's Church of Bay Shore, \$60,000
St. Vincent Catholic Medical Centers of New York, \$34,250
Salvation Army of Greater New York, \$246,280
Salvation Army, New Jersey Division, \$66,000
Samaritan Village, \$60,000
San Francisco Museum of Modern Art (Calif.), \$37,500
Sanctuary for Families, \$69,200
Sarah Lawrence College, \$72,700
Save the Children Federation (Conn.), \$43,150
Science & Environmental Health Network (Iowa), \$50,000
Scenic Hudson, \$91,550
Scholarship & Welfare Fund of the Alumni Association of Hunter College, \$20,560
School of American Ballet, \$50,125
SCO Family of Services, \$70,250
Sea Research Foundation (Conn.), \$125,000
Seamen's Church Institute of New York & New Jersey, \$23,000
Second Stage Theatre, \$28,500
Seedco, \$189,000
Senior Care & Activities Center (N.J.), \$50,000
Services & Advocacy for GLBT Elders (SAGE), \$50,350
Sesame Workshop, \$66,000
Settlement Housing Fund, \$37,200
Share for Life Foundation, \$20,000
Shared Interest, \$48,000
Shelter for the Homeless (Conn.), \$25,000
Shelter Island Presbyterian Church, \$21,190
Shinnecock Indian Nation Fund, \$74,000

Shriners Hospitals for Children (Fla.), \$32,500
Sikh Coalition, \$40,000
Sister Power Organization, \$50,000
Sisters of Charity of Saint Elizabeth (N.J.), \$87,780
Skidmore College, \$51,200
Sledge Group, \$20,000
Trustees of Smith College (Mass.), \$393,725
Smith Park of New York, \$30,000
Smithsonian Institution (D.C.), \$105,800
Smithtown Gospel Tabernacle, \$32,030
Smithtown Historical Society, \$25,080
Snug Harbor Cultural Center, \$50,000
Socrates Sculpture Park, \$60,000
South Asian Youth Action SAYA, \$120,000
South Brooklyn Legal Services, \$111,620
South Street Seaport Museum, \$130,750
Southampton Fresh Air Home, \$26,000
Southampton Hospital Foundation, \$26,000
Southern Maine Medical Center, \$30,000
Southern Mutual Help Association (La.), \$104,900
Southern Poverty Law Center (Ala.), \$20,457
Southwest Health Technology Foundation (Tex.), \$25,000
Special Olympics International (D.C.), \$26,968
Spence-Chapin Services to Families & Children, \$75,300
Spence School, \$115,500
Sponsors for Educational Opportunity, \$80,000
Stages of Learning, \$36,950
Stamford Hospital (Conn.), \$222,000
Stanford University (Calif.), \$62,300
Stanley M. Isaacs Neighborhood Center, \$38,790
Starworks Foundation, \$25,000
Staten Island Economic Development Corporation, \$25,000
Steppingstone Foundation (Mass.), \$251,000
Stone Barns Restoration Corporation, \$52,500
StreetSquash, \$25,000
Student/Sponsor Partnership, \$100,000
Studio Museum in Harlem, \$61,000
Stuyvesant High School Alumni Assoc., \$25,000
Summerbridge at the Town School, \$80,000
Sunnyside Community Services \$40,000
Support Center for Nonprofit Management, \$80,700
Supportive Housing Network of New York, \$60,000
Sustainable Long Island, \$40,700
Sustainable South Bronx, \$40,000
Swarthmore College (Pa.), \$53,700

T

Taft Institute for Government, \$96,240
Tanzanian Children's Fund (Maine), \$50,000
Taproot Foundation (Calif.), \$40,000
Teach for America, \$181,900
Teachers College, Columbia University, \$100,500
Technoserve (Conn.), \$20,970
TEDX (Colo.), \$75,000
Temple Beth El of Huntington, \$27,000
Thomas Hartman Foundation for Parkinson's Research, \$30,000
Tides Center (Calif.), \$86,111
Tifereth Israel Rabbinical Yeshiva, \$20,000
T.J. Martell Foundation, \$23,000
TOUCH Foundation, \$50,000
Town Hill School (Conn.), \$22,890
Transfiguration Church, \$21,000
Trevor Day School, \$55,200
Trey Whitfield School, \$50,000
Trickle Up Program, \$39,200
Trinitas Health Foundation (N.J.), \$20,000
Trinity Church (Conn.), \$50,000
Trinity Church Trinity Place Community Center, \$25,000

grants in 2005

Trinity College (Conn.), \$38,130
Trinity Human Services Corporation, \$50,000
Trinity Repertory Company (R.I.), \$65,000
Tri-State Transportation Campaign, \$41,100
Trust for Public Land (Calif.), \$53,350
Tuesdays Children, \$25,000
Trustees of Tufts College (Mass.), \$80,000
Tug Pegasus Preservation Project, \$32,000

U

UC San Diego Foundation (Calif.), \$50,000
UJA/Federation of Jewish Philanthropies of New York, \$802,960
Union Free School District of the Tarrytowns, \$31,000
Union of American Hebrew Congregations, \$20,100
Union of Concerned Scientists (Mass.), \$62,850
Union Settlement Association, \$55,850
Union Theological Seminary, \$25,150
United Community Centers, \$40,000
United for a Fair Economy (Mass.), \$70,000
United Hospital Fund, \$390,066
United Jewish Communities of MetroWest (N.J.), \$21,570
United Nations Association of the United States of America, \$30,000
United Negro College Fund (Va.), \$81,425
United Neighborhood Houses of New York, \$118,100
United States Dressage Foundation (Ky.), \$25,000
United States Fund for UNICEF, \$57,670
United Way of Long Island, \$288,387
United Way of New York City, \$122,819
United Way of Rhode Island, \$250,000
United Way of Tri-State, \$120,000
United Way of Westchester & Putnam, \$62,660
United We Stand, \$20,000
University of Alabama at Birmingham School of Medicine, \$78,000
University of Chicago (Ill.), \$429,200
University of New Mexico, \$78,000
University of New Mexico Foundation, \$40,000
University of North Carolina at Chapel Hill, \$52,325
Trustees of the University of Pennsylvania, \$293,100
University of State of New York Regents Research Fund, \$250,000
University of Vermont, \$74,670
University of Washington (Ill.), \$128,026
Urban Homesteading Assistance (U-HAB), \$50,500
Urban Institute (D.C.), \$95,000
Urban Justice Center, \$52,000
Urban Word NYC, \$60,000
U.S. Committee for United Nations Population Fund, \$36,400
U.S. Public Interest Research Group Education Fund (D.C.), \$75,000
USA Cycling Development Foundation (Colo.), \$25,000

V

The Valley, \$28,000
Vanderbilt University (Tenn.), \$27,500
Variety Child Learning Center, \$111,000
Vassar Brothers Hospital Foundation, \$50,000
Vassar College, \$147,250
Vassar-Warner Home, \$35,000
Vera Institute of Justice, \$79,950
Vietnam Veterans of America Foundation (D.C.), \$52,700
Villanova University (Pa.), \$28,800
Virtue Foundation, \$47,165
Visiting Nurse Association of Long Island, \$25,000
Visiting Nurse Service of New York, \$108,360
Vivian Beaumont Theater/Lincoln Center Theater, \$73,740
Voices Unbroken, \$20,000
Volunteer Consulting Group, \$45,000
Volunteers of America, Greater New York, \$45,100
VZV Research Foundation, \$25,000

W

Waldorf School of Garden City, \$162,000
Walter W. Naumburg Foundation, \$69,920
Washington Monthly (D.C.), \$100,000
Watchtower Bible & Tract Society of New York, \$596,088
Weeksville Heritage Center, \$40,000
Wellesley College (Mass.), \$30,100
West Brighton Community Local Development Corporation, \$35,000
West Harlem Environmental Action, \$50,000
Westchester Children's Association, \$82,600
Westchester Community College Foundation, \$85,800
Westchester Jewish Community Services, \$68,050
Westchester Land Trust, \$59,600
Western Justice Center Foundation (Calif.), \$25,000
Westhab, \$26,500
Weston Playhouse Theatre Company (Vt.), \$25,000
White Mountain School (N.H.), \$114,500
White Plains Hospital Center, \$71,040
Whitney Museum of American Art, \$30,271
WILD Foundation (Calif.), \$50,000
Wilderness Society (D.C.), \$27,100
Wildlife Conservation Society, \$182,645
Williams College (Mass.), \$36,700
Warren Wilson College (N.C.), \$88,540
William J. Brennan, Jr. Center for Justice, \$70,000
William J. Clinton Presidential Foundation (Ark.), \$39,000
William Marsh Rice University (Tex.), \$37,500
Windward School, \$107,000
Winifred Masterson Burke Rehabilitation Hospital, \$26,000
Winthrop-University Hospital, \$1,103,500
WNYC Foundation, \$57,000
Women Make Movies, \$55,350
Women in Need, \$55,500
Women's Housing & Economic Development Corporation, \$45,000
Women's Leadership Fund, \$25,000
Women's Prison Association & Home, \$110,210
Women's Project & Productions, \$90,000
Woodycrest Center for Human Development, \$70,000
Workforce Development Corporation, \$299,000
Workshop in Business Opportunities, \$25,000
World Federalist Association (D.C.), \$100,800
World Learning Inc. (Vt.), \$361,150
World Union for Progressive Judaism, \$55,000
World Wildlife Fund (D.C.), \$124,805

Y

Yale University (Conn.), \$918,875
Yale University, School of Forestry & Environmental Studies (Conn.), \$38,480
YMCA of Central & Northern Westchester, \$32,090
YMCA of Greater New York, \$429,010
YMCA of Long Island, \$65,600
Young Audiences, \$30,000
Young Audiences/New York, \$23,140
Young Korean American Service & Education Center, \$40,000
Young Survival Coalition, \$50,000
Youth Empowerment Mission, \$25,000
Youth Renewal Fund, \$25,000
Youth for Understanding USA (Md.), \$40,000
YWCA of Brooklyn, \$152,460

Z

Zichron Acheinu Levy, \$20,000

Grants listed: \$114,443,720

Grants Under \$20,000: \$22,527,243

TOTAL: \$136,970,963

credits

The photographs on pages 2, 6, 10, 13, and 22 were taken by Metin Oner.
The photographs on pages 4, 5, and 32 were taken by Sean Sime.
Cover photograph, Getty Images.

- p. 9 Keep Antibiotics Working, *photo: Herb Swanson*
p. 14 DreamYard Drama Project, *photo: Maria Fico*
 Jobs with Justice
 Western Resource Advocates, *photo: Colorado Environmental Coalition*
 Office of the Appellate Defender
 Weeksville Heritage Center, *photo: Stephen Barker*
 Tug Pegasus Preservation Project
 Municipal Art Society, *photo: Micaela Birmingham*
p. 19 New York Landmarks Conservancy, *photo: James J. Mahoney*
p. 20 Boys and Girls Harbor, *photo: Michael Towns*
p. 31 United Community Centers
p. 35 Planned Parenthood of Nassau County
p. 37 Neighborhood House, *photo: Al Sanchez*

Writer/Editor

Ani F. Hurwitz

Design

Van Gennep Design

Printing

Rasco Graphics

A copy of our latest annual report filed with the New York Secretary of State may be obtained upon request addressed to:

909 Third Avenue, 22nd Floor, New York, NY 10022

or

Office of the Attorney General Charities Bureau
120 Broadway, New York, NY 10271



The New York Community Trust

909 Third Avenue, 22nd Floor
New York, NY 10022
(212) 686-0010
www.nycommunitytrust.org

Long Island Community Foundation

Elias Hicks House
1740 Old Jericho Turnpike
Jericho, NY 11753
(516) 681-5085
www.licf.org

Westchester Community Foundation

200 North Central Park Avenue,
Suite 310
Hartsdale, NY 10530
(914) 948-5166
www.wcf-ny.org