

Forest Hill Residential Park Recommended Tree & Plant Options

Prepared By: Terra Landscape

March 2018





Tree Recommendations

Evergreen

Arbutus 'Marina'

Magnolia grandiflora

Tristaniopsis laurina 'Water Gum'

Lophostemon confertus 'Brisbane Box'

Lyonothamnus floribundus asplenifolius 'Catalina Ironwood'

Olea europaea 'Swan Hill' or other fruitless variety

Pittosporum undulatum, Victorian Box

Metrosideros excelsa, New Zealand Christmas Tree

Corymbia ficifolia, Red Flowering Gum

Deciduous

Acer rubrum 'October Glory'

Platanus acerifolia 'Columbia' London Plane

Ulmus americana, American Elm

Medians & Larger Basins

Cupressus macrocarpa, Monterey Cypress

Sequoia sempervirens 'Aptos Blue' Coast Redwood

Cedrus deodara, Deodar Cedar

Pinus canariensis, Canary Island Pine

Pinus pinea, Italian Stone Pine



Evergreen Recommendations



Arbutus 'Marina'

Coveted for its moderate size and its dependable performance in any number of climates and conditions. It requests only full sun and occasional water, once established. Its growing pace is moderate to slow, allowing ample time for shaping over the years to achieve exactly the right structure. Attractive large dark green leaves are a handsome red when new. In the fall and winter, pretty urn-shaped pink flowers clusters that resemble elaborate dangling earrings appear at the same time as the strawberry-like red to yellow fruit. This is an unusual alternative to the expected fall leaf color display. The peeling red bark is a rich textural and colorful design element in the garden.

Height: 20-30 feet

Canopy Width: 20 feet

Growth Rate: 12-24 inches per season

Root damage potential: low

Arbutus 'Marina'



Arbutus 'Marina'





Magnolia grandiflora

Loved for its foliage and flower, it also offers advantages of heat resistance and tolerance for damp soil. The large, evergreen leaves have rusty-brown on the undersides. Very attractive, large, white, fragrant blooms.

'Little Gem': A dwarf Southern Magnolia with smaller dark green foliage and a very compact narrow form. A naturally small tree or large shrub perfect for small gardens.

'Samuel Sommer': Erect or spreading to 30-40 feet tall.

Height: 20-80 feet depending on type

Canopy Width: 10-60 feet depending on type

Growth Rate: 12 inches per season

Root damage potential: low (Little Gem) to high (Southern Magnolia)

Magnolia grandiflora 'Little Gem'



Magnolia grandiflora 'Samuel Sommer'





Tristaniopsis laurina 'Water Gum'

Evergreen. Australian native. Slow to moderate growing (12 inches per season). Oval or rounded shape. Leaves are medium green, glossy, narrow and about 4 inches long. Flowers are showy, fragrant, yellow and blooms in Spring or Summer. Seed pods are like those of Eucalyptus but much smaller (to 1/4 inch wide) and they don't create litter problems.

Height: up to 25 feet

Canopy Width: 15 feet

Growth Rate: 12 inches per season

Root damage potential: low

Tristaniopsis laurina 'Water Gum'



Tristaniaopsis laurina 'Water Gum'





Lophostemon confertus

Brisbane Box

Evergreen. Native to Australia. Erect, moderate to fast growth to 30-45 feet tall and 25 feet wide. Oval, leathery bright green leaves are 4-6 inches long and tend to cluster at tips of branchlets. White to cream colored 3/4 inch flowers in clusters appear in summer, followed by woody capsule like those of Eucalyptus. Reddish-brown bark peels to reveal smooth, light-colored bark.

Height: 30-45 feet

Canopy Width: 25 feet

Growth Rate: 12-24" inches per season

Root damage potential: Moderate

Lophostemon confertus

Brisbane Box



Lophostemon confertus

Brisbane Box





Lyonothamnus floribundus Asplenifolius 'Catalina Ironwood'

This California native evergreen tree is fairly quick growing to a maximum height of 50-60 feet and a width of 15 to 20 feet but is usually seen in cultivation as a slender upright tree with an open canopy no more than 30 feet tall. The main stems and large branches have interesting fibrous shredding gray bark that sheds to reveal deep cinnamon red new bark; the smaller stems, twigs and petioles are this same red color. Needs good drainage. Attractive in groves.

Height: 20-35 feet

Canopy Width: 15-20 feet

Growth Rate: 12-24" inches per season

Root damage potential: Moderate

Lyonothamnus floribundus *Asplenifolius* 'Catalina Ironwood'



Lyonothamnus floribundus Asplenifolius 'Catalina Ironwood'





Olea europaea 'Swan Hill'

Reaches 25–35 feet tall. Willow-like, gray-green foliage blends well with any color. Smooth gray trunks and branches become gnarled and picturesque in age. This variety bears no fruit or pollen—great for allergy sufferers. Drought tolerant once established; also tolerates any soil, salt air, gusty or cold winds, and fog. It is also free of any major pests and diseases. This tree must have plenty of sun and very well-drained soil.

Height: 25-30 feet

Canopy Width: 25-30 feet

Growth Rate: 12-24" inches per season

Root damage potential: moderate

Olea europaea 'Swan Hill'

Or other fruitless varieties



Olea europaea 'Swan Hill'





Pittosporum undulatum

Victorian Box

A large shrub or medium sized tree that can reach to 30-40 feet tall or more with a pyramidal shape. Native to Australia. Valued for their foliage and form when allowed to branch naturally. Attractive dark green leaves have very wavy margins and the fragrant cream-white flowers bloom in profusion in the early spring. Following bloom, small orange berries are produced, which can be a nuisance but also attract birds and bees.

Height: 30-40 feet

Canopy Width: 30-40feet

Growth Rate: 24" inches per season

Root damage potential: low

Pittosporum undulatum

Victorian Box





Metrosideros excelsa

New Zealand Christmas Tree

Drought resistant and smog tolerant. Forms areal roots that descend to the ground and take root. These can become extra trunks that provide additional support. Resistant to salt spray. A good coastal tree. Can grow taller if conditions are right. Native to New Zealand.

Height: 30-35 feet

Canopy Width: 30-35 feet

Growth Rate: 24" inches per season

Root damage potential: moderate

Metrosideros excelsa

New Zealand Christmas Tree





Corymbia ficifolia

Red Flowering Gum

Red flowering gum is very desirable as a flowering accent tree, with its profusion of bright flower clusters in late summer, and sporadically throughout the year. It prefers temperate coastal conditions, where it tolerates dryness and salt spray. It is drought and smog tolerant. Hardiness estimate : 25-30 degrees F. Leaves have no dot glands when held up to the light. Has fragrant Leaf. Native to Western Australia.

Height: 20-45 feet

Canopy Width: 15-60 feet

Growth Rate: 24" inches per season

Root damage potential: moderate

Corymbia ficifolia

Red Flowering Gum



Deciduous Recommendations



Acer rubrum 'October Glory'

October Glory Red Maple

Deciduous. Native to eastern North America. Moderate to fast growing (24" per year). Oval or rounded shape. Outstanding bright orange to deep reddish-purple fall foliage. Leaves are retained later than most cultivars and one of the last trees to turn color in fall. Medium green foliage in spring and summer provides nice contrast to red petioles. One of the best trees for fall color.

Height: 40-50'

Canopy Width: 30-40'

Growth Rate: 24" annually

Root damage potential: Low

Acer rubrum 'October Glory'

October Glory Red Maple



Acer rubrum 'October Glory'

October Glory Red Maple



Brotherhood Way, San Francisco: September 3, 2015

Acer rubrum 'October Glory'

October Glory Red Maple





Platanus acerifolia 'Columbia'

London Plane

Platanus acerifolia 'Columbia' brings the beauty of the London Plane tree without the worry of anthracnose (symptoms include discoloration and leaf drop) or mildew to the landscape. A strikingly beautiful tree with an erect growth pattern, it grows quickly and can reach 30 feet in 12 years or 50 feet in 25 years. It will spread about half as wide as it is tall. Five-lobed medium to dark green leaves are a nice foil to the handsome peeling bark that is gray-yellow to gray-orange when new and gray-green with age. Its fruit balls are spiky spheres. It will be happiest in full sun with moderate water and deep rich soil.

Height: 40-80 feet

Canopy Width: 30-40 feet

Growth Rate: 24 inches per season

Root damage potential: High

Platanus acerifolia 'Columbia'

London Plane



Platanus acerifolia 'Columbia'

London Plane





Ulmus americana

American Elm

The Princeton elm exhibits good resistance to Dutch elm disease (DED) and demonstrates resistance to elm beetles as well. This large, fast-growing tree is tolerant of many adverse site conditions.

Height: 50-65feet

Canopy Width: 40-50 feet

Growth Rate: 24 inches per season

Root damage potential: Low

Ulmus americana

American Elm



Ulmus americana

American Elm



Recommendations for Medians & Larger Basins



Cupressus macrocarpa

Monterey Cypress

Native to California's Monterey peninsula. Beautiful tree to 40 feet or taller, with rich bright green foliage. Narrow and pyramidal in youth, spreading as wide as high as it grows older; picturesque in age, especially in windy coastal conditions.

Height: 40-65feet

Canopy Width: 25-40 feet

Growth Rate: up to 36 inches per season

Root damage potential: Moderate

Cupressus macrocarpa

Monterey Cypress





Sequoia sempervirens 'Aptos Blue'

Coast Redwood

Fast-growing evergreen conifer with an upright growth habit to 80-120' tall x 15-30' wide with age. This attractive California native towers upward with dense, flattened, needle-like, aromatic blue-green foliage on nearly horizontal branching, with small hanging branchlets developing at the branch tips. Adding further appeal to this stately variety is the deeply-fissured, reddish-brown bark that becomes more deeply-furrowed with age. Well-suited for woodland settings, most often planted in multiples. Few known pests or diseases. Requires regular watering and thrives in a full sun exposure.

Height: 70-100 feet

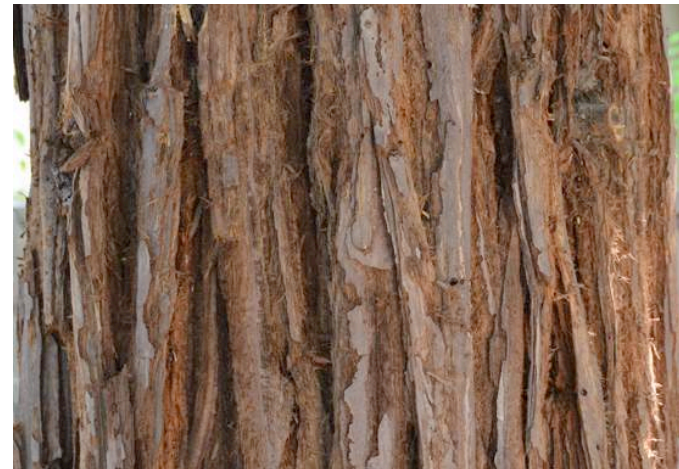
Canopy Width: 15-30 feet

Growth Rate: up to 36 inches per season

Root damage potential: Moderate

Sequoia sempervirens 'Aptos Blue'

Coast Redwood





Cedrus deodara

Deodar Cedar

A large, pyramidal form with attractive gray-green foliage and graceful, arching branches. Makes a wonderful living Christmas tree! Allow plenty of room in the landscape to best display this stately tree. Heat and drought tolerant when established. Evergreen.

Height: 40-60 feet

Canopy Width: 20-30 feet

Growth Rate: up to 36 inches per season

Root damage potential: Moderate

Cedrus deodara

Deodar Cedar





Pinus canariensis

Canary Island Pine

Pinus Canariensis is known as The Canary Island Pine. It is a fast growing tree that displays long slender blue-green needles as much as 12" long and attractive rough red bark with large cones. It is drought tolerant but with irrigation it can grow 3 feet/year before it matures. Canary Island pine can be shaped by a prevailing wind. Decisions on where to plant are influenced by many conditions. Surface roots for instance can lift sidewalks over a long period of time. Power lines can be a problem as well for this 50 to 80 feet by 25 feet wide tree. In certain conditions like these regular tree maintenance is required.

Height: 50-80 feet

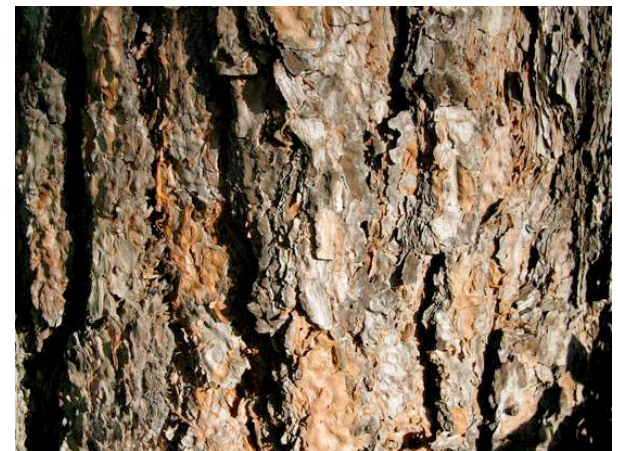
Canopy Width: 20-35 feet

Growth Rate: up to 36 inches per season

Root damage potential: Moderate

Pinus canariensis

Canary Island Pine





Pinus pinea

Italian Stone Pine

In youth, grows as a stout, bushy globe; in middle life, develops a thick trunk topped with “umbrella” of many branches. In maturity, tree is broad and flat topped. Excellent in beach gardens. Eventually too large for small gardens. Heat tolerant.

Height: 40-80 feet

Canopy Width: 40-60 feet

Growth Rate: 24-36 inches per season

Root damage potential: Moderate

Pinus pinea

Italian Stone Pine

