

MONTANA CANADIAN ROCKIES ECOREGION

G1 and G2 Species Habitat Management Guidelines



INTRODUCTION

The Sustainable Forestry Initiative® (SFI) [2022 Standards](#) include requirements that promote and conserve Forests with Exceptional Conservation Value (FECV), which includes critically imperiled (G1) and imperiled (G2) species. This fact sheet summarizes the analysis of FECV habitat within this ecoregion and provides habitat management recommendations that would benefit species potentially found here.

HABITAT TYPES

- Mixed Conifer Forest
- Riparian/Streams
- Special Sites (Alpine, Cave, Forest Edge, Shrubland, Grasslands, Bare Rock/Talus)

MIXED CONIFER FOREST MANAGEMENT

- Protect known locations
- Retain legacy trees, stumps, and logs
- Retain large diameter trees with cavities or broken tops
- Leave skips and gaps with dense shrub component
- Retain large slash into piles

RIPARIAN/STREAMS MANAGEMENT

- Protect known locations
- Maintain well vegetated riparian buffers
- Plant a diversity of both hardwood and conifer trees in the riparian zone
- Retain large diameter trees near streams and rivers
- Buffer wetlands, springs, and headwater areas

SPECIAL SITES MANAGEMENT

- Protect known locations
- Buffer special sites
- Provide floral resources such as Asters, Chrysothamnus, and Cirsium



**Northern Rocky Mountains
Refugium Caddisfly**



Britton's Dry Rock Moss



Suckley Cuckoo Bumble Bee

All management recommendations assume that operators and land managers are following all applicable BMPs, laws, and regulations.

MONTANA CANADIAN ROCKIES ECOREGION

G1 and G2 Species Habitat Management Guidelines

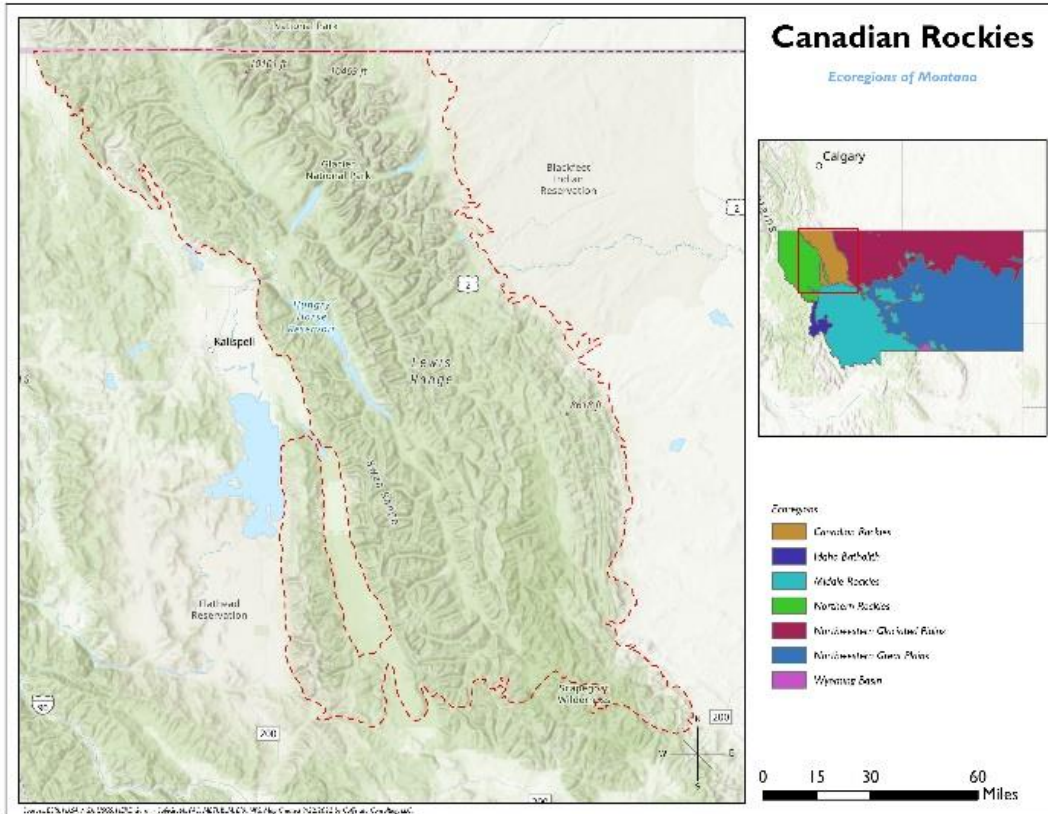


SCIENTIFIC NAME	COMMON NAME	HABITAT	STATUS
<i>Nodobryoria subdivergens</i>	Alpine Foxtail Lichen	Alpine	G2G3
<i>Oreohelix alpina</i>	Alpine Mountainsnail	Bare Rock/Talus	G2
<i>Oreohelix elrodi</i>	Carinate Mountainsnail	Bare Rock/Talus	G2
<i>Synthryis canbyi</i>	Mission Mountain kittentails	Bare Rock/Talus	G2G3
<i>Stygobromus glacialis</i>	Glacier Amphipod	Cave	G1
<i>Discus brunsoni</i>	Lake Disc	Forest Edge	G1
<i>Botrychium gallicomontanum</i>	Frenchman's Bluff Moonwort	Grassland	G2
<i>Silene spaldingii</i>	Spalding's Catchfly	Grassland	G2
<i>Grimmia brittoniae</i>	Britton's Dry Rock Moss	Mixed Conifer Forest	G2
<i>Suwallia salish</i>	A Stonefly	Riparian/Streams	G1
<i>Goereilla baumanni</i>	Northern Rocky Mountains Refugium Caddisfly	Riparian/Streams	G1
<i>Zapada glacier</i>	Western Glacier Stonefly	Riparian/Streams	G1
<i>Allomyia hector</i>	A Caddisfly	Riparian/Streams	G1G2
<i>Lednia tumana</i>	Meltwater Lednian Stonefly	Riparian/Streams	G1G2
<i>Rhyacophila ophrys</i>	A Rhyacophilan Caddisfly	Riparian/Streams	G1G3
<i>Parameletus columbiae</i>	A Mayfly	Riparian/Streams	G2
<i>Rhyacophila alexanderi</i>	Alexander's Rhyacophilan Caddisfly	Riparian/Streams	G2
<i>Verrucaria kootenaica</i>	Kootenai Speck Lichen	Riparian/Streams	G2
<i>Soyedina potteri</i>	Northern Rocky Mountains Refugium Stonefly	Riparian/Streams	G2
<i>Mimulus hymenophyllus</i>	Thinsepal monkeyflower	Riparian/Streams	G2
<i>Salmasellus steganothrix</i>	A Cave Obligate Isopod	Riparian/Streams	G2G3
<i>Rhyacophila ebria</i>	A Rhyacophilan Caddisfly	Riparian/Streams	G2G3
<i>Rhyacophila unimaculata</i>	A Rhyacophilan Caddisfly	Riparian/Streams	G2G3
<i>Megaleuctra stigmata</i>	Giant Needlefly	Riparian/Streams	G2G3
<i>Bombus suckleyi</i>	Suckley Cuckoo Bumble Bee	Shrubland	G2G3

*species links provided when available

MONTANA CANADIAN ROCKIES ECOREGION

G1 and G2 Species Habitat Management Guidelines



All management recommendations assume that operators and land managers are following all applicable BMPs, laws, and regulations.