

# CENTRAL CALIFORNIA FOOTHILLS AND COASTAL MOUNTAINS Ecoregion

## G1 and G2 Species Habitat Management Guidelines



### INTRODUCTION

The Sustainable Forestry Initiative® (SFI) [2022 Standards](#) include requirements that promote and conserve Forests with Exceptional Conservation Value (FECV), which includes critically imperiled (G1) and imperiled (G2) species. This fact sheet summarizes the analysis of FECV habitat within this ecoregion and provides habitat management recommendations that would benefit species potentially found here.

### HABITAT TYPES

- Grassland
- Mixed Conifer Forest
- Riparian/Streams/Wetlands/Temporary Pools/Springs/Bog/Fen
- Shrubland/Chaparral
- Special Sites (Bare Rock/Talus, Barrens, Cave, Cliff, Forest Edge, Sand/Dunes, Savanna)

### GRASSLAND MANAGEMENT

- Protect known locations
- Buffer grassland areas

### MIXED CONIFER FOREST MANAGEMENT

- Protect known locations
- Retain legacy trees, stumps, and logs
- Retain large diameter trees with cavities or broken tops
- Leave skips and gaps with dense shrub component
- Retain large slash into piles

### RIPARIAN/STREAMS, WETLANDS, TEMPORARY POOLS, SPRINGS, BOG/FEN MANAGEMENT

- Protect known locations
- Maintain well vegetated riparian buffers
- Plant a diversity of both hardwood and conifer trees
- Retain large diameter trees near streams, rivers and wetlands
- Buffer wetlands, springs, and headwater areas



**California Reg-legged Frog**



**Shaggy Hair Lupine**



**Western Lily**

*All management recommendations assume that operators and land managers are following all applicable BMPs, laws, and regulations.*

# CENTRAL CALIFORNIA FOOTHILLS AND COASTAL MOUNTAINS Ecoregion

## G1 and G2 Species Habitat Management Guidelines



### SHRUBLAND/CHAPARRAL MANAGEMENT

- Protect known locations
- Buffer shrubland and chaparral areas

### SPECIAL SITES MANAGEMENT

- Protect known locations
- Maintain and buffer special sites

SCIENTIFIC NAME	COMMON NAME	HABITAT	STATUS
<i>Chorizanthe minutiflora</i>	<a href="#">Fort Ord Spineflower</a>	Bare Rock/Talus	G1
<i>Hypogymnia schizidiata</i>	<a href="#">Island Tube Lichen</a>	Bare Rock/Talus	G1
<i>Calicina macula</i>	<a href="#">Marbled Harvestman</a>	Bare Rock/Talus	G1
<i>Streptanthus callistus</i>	<a href="#">Mt. Hamilton Jewelflower</a>	Bare Rock/Talus	G1
<i>Ceanothus decornutus</i>	<a href="#">Nicasio Ceanothus</a>	Bare Rock/Talus	G1
<i>Calicina piedra</i>	<a href="#">Piedra Harvestman</a>	Bare Rock/Talus	G1
<i>Calicina arida</i>	<a href="#">San Benito Harvestman</a>	Bare Rock/Talus	G1
<i>Calicina breva</i>	<a href="#">Stanislaus Harvestman</a>	Bare Rock/Talus	G1
<i>Calicina dimorphica</i>	<a href="#">Watts Valley Harvestman</a>	Bare Rock/Talus	G1
<i>Tortula californica</i>	<a href="#">California Screw Moss</a>	Bare Rock/Talus	G2
<i>Campanula exigua</i>	<a href="#">Chaparral Harebell</a>	Bare Rock/Talus	G2
<i>Orthotrichum kellmanii</i>	<a href="#">Kellman's Bristle Moss</a>	Bare Rock/Talus	G2
<i>Mielichhoferia shevockii</i>	<a href="#">Shevock's Copper Moss</a>	Bare Rock/Talus	G2
<i>Dacryophyllum falcifolium</i>	<a href="#">Teardrop Moss</a>	Bare Rock/Talus	G2
<i>Trilobopsis tehamana</i>	<a href="#">Tehama Chaparral</a>	Bare Rock/Talus	G2
<i>Ceanothus ferrisiae</i>	<a href="#">Coyote Ceanothus</a>	Barrens	G1
<i>Arctostaphylos myrtifolia</i>	<a href="#">lone Manzanita</a>	Barrens	G1
<i>Ceanothus masonii</i>	<a href="#">Mason's Ceanothus</a>	Barrens	G1
<i>Ceanothus roderickii</i>	<a href="#">Pine Hill Ceanothus</a>	Barrens	G1
<i>Trifolium amoenum</i>	<a href="#">Showy Indian Clover</a>	Barrens	G1
<i>Cryptantha mariposae</i>	<a href="#">Mariposa Cryptantha</a>	Barrens	G2
<i>Horkelia parryi</i>	<a href="#">Parry's Horkelia</a>	Barrens	G2
<i>Layia discoidea</i>	<a href="#">Rayless Layia</a>	Barrens	G2
<i>Allium sharsmithiae</i>	<a href="#">Sharsmith's Onion</a>	Barrens	G2
<i>Hesperolinon bicarpellatum</i>	<a href="#">Two-carpel Dwarf-flax</a>	Barrens	G2
<i>Arenaria paludicola</i>	<a href="#">Marsh Sandwort</a>	Bog/Fen	G1
<i>Linderiella occidentalis</i>	<a href="#">California Fairy Shrimp</a>	Bog/Fen	G2
<i>Stygobromus gradyi</i>	<a href="#">Grady's Cave Amphipod</a>	Cave	G1

All management recommendations assume that operators and land managers are following all applicable BMPs, laws, and regulations.

# CENTRAL CALIFORNIA FOOTHILLS AND COASTAL MOUNTAINS Ecoregion

## G1 and G2 Species Habitat Management Guidelines



SCIENTIFIC NAME	COMMON NAME	HABITAT	STATUS
<i>Monadenia yosemitensis</i>	<a href="#">Indian Yosemite Snail</a>	Cliff	G1
<i>Arctostaphylos edmundsii</i>	<a href="#">Little Sur Manzanita</a>	Cliff	G2
<i>Raillardiopsis muirii</i>	<a href="#">Muir's Tarplant</a>	Cliff	G2
<i>Eucerceris ruficeps</i>	<a href="#">Redheaded Sphecic Wasp</a>	Dunes	G2
<i>Sidalcea keckii</i>	<a href="#">Keck's Checker-mallow</a>	Forest Edge	G1
<i>Clarkia springvillensis</i>	<a href="#">Springville Clarkia</a>	Forest Edge	G2
<i>Pedicularis rigginsiae</i>	<a href="#">Arroyo de la Cruz Lousewort</a>	Grassland	G1
<i>Fritillaria grayana</i>	<a href="#">Gray's Fritillary</a>	Grassland	G1
<i>Aristocapsa insignis</i>	<a href="#">Indian Valley Centrostegia</a>	Grassland	G1
<i>Pseudobahia peirsonii</i>	<a href="#">San Joaquin Adobe Sunburst</a>	Grassland	G1
<i>Fritillaria striata</i>	<a href="#">Striped Adobe Lily</a>	Grassland	G1
<i>Clarkia imbricata</i>	<a href="#">Vine Hill Clarkia</a>	Grassland	G1
<i>Helianthus winteri</i>	<a href="#">Winter's Sunflower</a>	Grassland	G1
<i>Tracyina rostrata</i>	<a href="#">Beaked Tracyina</a>	Grassland	G2
<i>Balsamorhiza macrolepis</i>	<a href="#">Big-scale Balsamroot</a>	Grassland	G2
<i>Agrostis blasdalei</i>	<a href="#">Cliff Bentgrass</a>	Grassland	G2
<i>Layia septentrionalis</i>	<a href="#">Colusa Tidy-tips</a>	Grassland	G2
<i>Bombus crotchii</i>	<a href="#">Crotch's Bumble Bee</a>	Grassland	G2
<i>Lagophylla diabolensis</i>	<a href="#">Diablo Range Hare-leaf</a>	Grassland	G2
<i>Hesperolinon drymarioides</i>	<a href="#">Drymary Dwarf-flax</a>	Grassland	G2
<i>Hesperolinon adenophyllum</i>	<a href="#">Glandular Western Flax</a>	Grassland	G2
<i>Calycadenia hooveri</i>	<a href="#">Hoover's Rosinweed</a>	Grassland	G2
<i>Adela oplerella</i>	<a href="#">Opler's Longhorn Moth</a>	Grassland	G2
<i>Lotus rubriflorus</i>	<a href="#">Red-flowered Lotus</a>	Grassland	G2
<i>Symphyotrichum defoliatum</i>	<a href="#">San Bernardino Aster</a>	Grassland	G2
<i>Calochortus obispoensis</i>	<a href="#">San Luis Mariposa Lily</a>	Grassland	G2
<i>Eriogonum nervulosum</i>	<a href="#">Snow Mountain Buckwheat</a>	Grassland	G2
<i>Sanicula maritima</i>	<a href="#">Adobe Sanicle</a>	Herbaceous Wetland	G2
<i>Efferia antiochi</i>	<a href="#">Antioch Efferian Robberfly</a>	Mixed Conifer Forest	G1
<i>Arctostaphylos cruzensis</i>	<a href="#">Arroyo de la Cruz Manzanita</a>	Mixed Conifer Forest	G1
<i>Hubbardia secoensis</i>	<a href="#">Arroyo Seco Short-tailed Whipscorpion</a>	Mixed Conifer Forest	G1
<i>Gymnogyps californianus</i>	<a href="#">California Condor</a>	Mixed Conifer Forest	G1
<i>Cryptantha excavate</i>	<a href="#">Deep-scar Cryptantha</a>	Mixed Conifer Forest	G1
<i>Hubbardia idria</i>	<a href="#">Idria Short-tailed Whipscorpion</a>	Mixed Conifer Forest	G1
<i>Brodiaea insignis</i>	<a href="#">Kaweah Brodiaea</a>	Mixed Conifer Forest	G1
<i>Entosthodon kochii</i>	<a href="#">Koch's Cord-moss</a>	Mixed Conifer Forest	G1
<i>Cistanthe pulchella</i>	<a href="#">Mariposa Pussy-paws</a>	Mixed Conifer Forest	G1
<i>Stylocline masonii</i>	<a href="#">Mason's Neststraw</a>	Mixed Conifer Forest	G1

All management recommendations assume that operators and land managers are following all applicable BMPs, laws, and regulations.

# CENTRAL CALIFORNIA FOOTHILLS AND COASTAL MOUNTAINS Ecoregion

## G1 and G2 Species Habitat Management Guidelines



SCIENTIFIC NAME	COMMON NAME	HABITAT	STATUS
<i>Trifolium trichocalyx</i>	<a href="#">Monterey Clover</a>	Mixed Conifer Forest	G1
<i>Pinus radiata</i>	<a href="#">Monterey Pine</a>	Mixed Conifer Forest	G1
<i>Arctostaphylos morroensis</i>	<a href="#">Morro Manzanita</a>	Mixed Conifer Forest	G1
<i>Streptanthus anomalus</i>	<a href="#">Mount Burdell Jewelflower</a>	Mixed Conifer Forest	G1
<i>Lomatium observatorium</i>	<a href="#">Mt. Hamilton Lomatium</a>	Mixed Conifer Forest	G1
<i>Astragalus claranus</i>	<a href="#">Napa Milkvetch</a>	Mixed Conifer Forest	G1
<i>Arctostaphylos nissenana</i>	<a href="#">Nissenan Manzanita</a>	Mixed Conifer Forest	G1
<i>Arctostaphylos osoensis</i>	<a href="#">Oso Manzanita</a>	Mixed Conifer Forest	G1
<i>Trifolium polyodon</i>	<a href="#">Pacific Grove Clover</a>	Mixed Conifer Forest	G1
<i>Fremontodendron decumbens</i>	<a href="#">Pine Hill Flannelbush</a>	Mixed Conifer Forest	G1
<i>Ceanothus confusus</i>	<a href="#">Rincon Ridge Ceanothus</a>	Mixed Conifer Forest	G1
<i>Eriophyllum latilobum</i>	<a href="#">San Mateo Woolly-sunflower</a>	Mixed Conifer Forest	G1
<i>Ancistrocarphus keilii</i>	<a href="#">Santa Ynez Groundstar</a>	Mixed Conifer Forest	G1
<i>Trachykele hartmani</i>	<a href="#">Serpentine Cypress Wood-boring Beetle</a>	Mixed Conifer Forest	G1
<i>Brodiaea matsonii</i>	<a href="#">Sulphur Creek Brodiaea</a>	Mixed Conifer Forest	G2
<i>Fritillaria pluriflora</i>	<a href="#">Adobe Lily</a>	Mixed Conifer Forest	G2
<i>Clarkia rostrata</i>	<a href="#">Beaked Clarkia</a>	Mixed Conifer Forest	G2
<i>Scrophularia atrata</i>	<a href="#">Black-flower Figwort</a>	Mixed Conifer Forest	G2
<i>Chorizanthe blakleyi</i>	<a href="#">Blakey's Spineflower</a>	Mixed Conifer Forest	G2
<i>Arctostaphylos virgata</i>	<a href="#">Bollinas Manzanita</a>	Mixed Conifer Forest	G2
<i>Hesperolinon breweri</i>	<a href="#">Brewer's Dwarf-flax</a>	Mixed Conifer Forest	G2
<i>Streptanthus hesperidis</i>	<a href="#">Brewer's Twistflower</a>	Mixed Conifer Forest	G2
<i>Abies bracteata</i>	<a href="#">Bristlecone Fir</a>	Mixed Conifer Forest	G2
<i>Eriogonum butterworthianum</i>	<a href="#">Butterworth's Buckwheat</a>	Mixed Conifer Forest	G2
<i>Mimulus pictus</i>	<a href="#">Calico Monkeyflower</a>	Mixed Conifer Forest	G2
<i>Ceanothus divergens</i>	<a href="#">Calistoga Ceanothus</a>	Mixed Conifer Forest	G2
<i>Carex xerophila</i>	<a href="#">Chaparral Sedge</a>	Mixed Conifer Forest	G2
<i>Lomatium congdonii</i>	<a href="#">Congdon's Lomatium</a>	Mixed Conifer Forest	G2
<i>Lessingia arachnoidea</i>	<a href="#">Crystal Springs Lessingia</a>	Mixed Conifer Forest	G2
<i>Poa diaboli</i>	<a href="#">Diablo Canyon Bluegrass</a>	Mixed Conifer Forest	G2
<i>Wyethia reticulata</i>	<a href="#">El Dorado Mule's-ears</a>	Mixed Conifer Forest	G2
<i>Lagophylla dichotoma</i>	<a href="#">Forked Hare-leaf</a>	Mixed Conifer Forest	G2
<i>Cupressus goveniana</i>	<a href="#">Gowen Cypress</a>	Mixed Conifer Forest	G2
<i>Madia hallii</i>	<a href="#">Hall's Madia</a>	Mixed Conifer Forest	G2
<i>Rupertia hallii</i>	<a href="#">Hall's Rupertia</a>	Mixed Conifer Forest	G2
<i>Camissonia hardhamiae</i>	<a href="#">Hardham's Evening-primrose</a>	Mixed Conifer Forest	G2
<i>Allium hickmanii</i>	<a href="#">Hickman's Onion</a>	Mixed Conifer Forest	G2
<i>Arctostaphylos hookeri</i>	<a href="#">Hooker's Manzanita</a>	Mixed Conifer Forest	G2

All management recommendations assume that operators and land managers are following all applicable BMPs, laws, and regulations.

# CENTRAL CALIFORNIA FOOTHILLS AND COASTAL MOUNTAINS Ecoregion

## G1 and G2 Species Habitat Management Guidelines



SCIENTIFIC NAME	COMMON NAME	HABITAT	STATUS
<i>Delphinium hutchinsoniae</i>	<a href="#">Hutchinson's Larkspur</a>	Mixed Conifer Forest	G2
<i>Linanthus jepsonii</i>	<a href="#">Jepson's Desert-trumpets</a>	Mixed Conifer Forest	G2
<i>Allium jepsonii</i>	<a href="#">Jepson's Onion</a>	Mixed Conifer Forest	G2
<i>Clarkia jolonensis</i>	<a href="#">Jolon Clarkia</a>	Mixed Conifer Forest	G2
<i>Mimulus shevockii</i>	<a href="#">Kelso Creek Monkeyflower</a>	Mixed Conifer Forest	G2
<i>Arctostaphylos regismontana</i>	<a href="#">Kings Mountain Manzanita</a>	Mixed Conifer Forest	G2
<i>Hoita strobilina</i>	<a href="#">Loma Prieta Scurfpea</a>	Mixed Conifer Forest	G2
<i>Chorizanthe pungens</i>	<a href="#">Monterey Spineflower</a>	Mixed Conifer Forest	G2
<i>Streptanthus morrisonii</i>	<a href="#">Morrison's Jewelflower</a>	Mixed Conifer Forest	G2
<i>Clarkia mosquinii</i>	<a href="#">Mosquin's Clarkia</a>	Mixed Conifer Forest	G2
<i>Calochortus pulchellus</i>	<a href="#">Mt. Diablo Fairy Lantern</a>	Mixed Conifer Forest	G2
<i>Phacelia phacelioides</i>	<a href="#">Mt. Diablo Phacelia</a>	Mixed Conifer Forest	G2
<i>Coreopsis hamiltonii</i>	<a href="#">Mt. Hamilton Coreopsis</a>	Mixed Conifer Forest	G2
<i>Iris munzii</i>	<a href="#">Munz's Iris</a>	Mixed Conifer Forest	G2
<i>Lupinus citrinus</i>	<a href="#">Orange-flowered Lupine</a>	Mixed Conifer Forest	G2
<i>Layia heterotricha</i>	<a href="#">Pale-yellow Layia</a>	Mixed Conifer Forest	G2
<i>Monardella palmeri</i>	<a href="#">Palmer's Monardella</a>	Mixed Conifer Forest	G2
<i>Hesperolinon tehamense</i>	<a href="#">Paskenta Grade Dwarf-flax</a>	Mixed Conifer Forest	G2
<i>Navarretia setiloba</i>	<a href="#">Piute Mountains Navarretia</a>	Mixed Conifer Forest	G2
<i>Chlorogalum purpureum</i>	<a href="#">Purple Amole</a>	Mixed Conifer Forest	G2
<i>Allium tuolumnense</i>	<a href="#">Rawhide Hill Onion</a>	Mixed Conifer Forest	G2
<i>Helminthoglypta sequoicola</i>	<a href="#">Redwood Shoulderband</a>	Mixed Conifer Forest	G2
<i>Camissonia benitensis</i>	<a href="#">San Benito Evening-primrose</a>	Mixed Conifer Forest	G2
<i>Collinsia multicolor</i>	<a href="#">San Francisco Collinsia</a>	Mixed Conifer Forest	G2
<i>Calochortus simulans</i>	<a href="#">San Luis Obispo Mariposa Lily</a>	Mixed Conifer Forest	G2
<i>Solanum wallacei</i>	<a href="#">Santa Catalina Nightshade</a>	Mixed Conifer Forest	G2
<i>Arctostaphylos andersonii</i>	<a href="#">Santa Cruz Manzanita</a>	Mixed Conifer Forest	G2
<i>Stebbinsoseris decipiens</i>	<a href="#">Santa Cruz Silverpuffs</a>	Mixed Conifer Forest	G2
<i>Galium clementis</i>	<a href="#">Santa Lucia Bedstraw</a>	Mixed Conifer Forest	G2
<i>Lewisia serrata</i>	<a href="#">Saw-toothed Lewisia</a>	Mixed Conifer Forest	G2
<i>Lupinus spectabilis</i>	<a href="#">Shaggy Hair Lupine</a>	Mixed Conifer Forest	G2
<i>Hesperolinon sharsmithiae</i>	<a href="#">Sharsmith's Dwarf-flax</a>	Mixed Conifer Forest	G2
<i>Calycadenia micrantha</i>	<a href="#">Small-flower Calycadenia</a>	Mixed Conifer Forest	G2
<i>Streptanthus brachiatus</i>	<a href="#">Socrates Mine Streptanthus</a>	Mixed Conifer Forest	G2
<i>Madia stebbinsii</i>	<a href="#">Stebbins' Madia</a>	Mixed Conifer Forest	G2
<i>Fritillaria falcata</i>	<a href="#">Talus Fritillary</a>	Mixed Conifer Forest	G2
<i>Arctostaphylos montereyensis</i>	<a href="#">Toro Manzanita</a>	Mixed Conifer Forest	G2
<i>Githopsis tenella</i>	<a href="#">Tube-flower Bluecup</a>	Mixed Conifer Forest	G2
<i>Eriastrum luteum</i>	<a href="#">Yellow-flower Woolstar</a>	Mixed Conifer Forest	G2

All management recommendations assume that operators and land managers are following all applicable BMPs, laws, and regulations.

# CENTRAL CALIFORNIA FOOTHILLS AND COASTAL MOUNTAINS Ecoregion

## G1 and G2 Species Habitat Management Guidelines



SCIENTIFIC NAME	COMMON NAME	HABITAT	STATUS
<a href="#"><i>Calochortus syntrophus</i></a>		Mixed Conifer Forest	G2
<a href="#"><i>Grimmia torenii</i></a>		Mixed Conifer Forest	G2
<a href="#"><i>Erythranthe marmorata</i></a>		Mixed Conifer Forest	G2
<i>Malacothamnus abbottii</i>	<a href="#">Abbott's Bushmallow</a>	Riparian/Streams	G1
<i>Anaxyrus exsul</i>	<a href="#">Black Toad</a>	Riparian/Streams	G1
<i>Horkelia bolanderi</i>	<a href="#">Bolander's Horkelia</a>	Riparian/Streams	G1
<i>Rhynchospora californica</i>	<a href="#">California Beakrush</a>	Riparian/Streams	G1
<i>Syncaris pacifica</i>	<a href="#">California Freshwater Shrimp</a>	Riparian/Streams	G1
<i>Eryngium racemosum</i>	<a href="#">Delta Coyote-thistle</a>	Riparian/Streams	G1
<i>Elaphrus viridis</i>	<a href="#">Delta Green Ground Beetle</a>	Riparian/Streams	G1
<i>Cryptochia denningi</i>	<a href="#">Denning's Cryptic Caddisfly</a>	Riparian/Streams	G1
<i>Pyrgulopsis diablensis</i>	<a href="#">Diablo Range Pyrg</a>	Riparian/Streams	G1
<i>Rorippa gambelii</i>	<a href="#">Gambel's Watercress</a>	Riparian/Streams	G1
<i>Tuctoria greenei</i>	<a href="#">Green's Awnless Orcutt Grass</a>	Riparian/Streams	G1
<i>Stygobromus harai</i>	<a href="#">Hara's Cave Amphipod</a>	Riparian/Streams	G1
<i>Potentilla hickmanii</i>	<a href="#">Hickman's Cinquefoil</a>	Riparian/Streams	G1
<i>Batrachoseps minor</i>	<a href="#">Lesser Slender Salamander</a>	Riparian/Streams	G1
<i>Batrachoseps relictus</i>	<a href="#">Relictual Slender Salamander</a>	Riparian/Streams	G1
<i>Plebulina emigdionis</i>	<a href="#">San Emigdio Blue</a>	Riparian/Streams	G1
<i>Pyrgulopsis taylori</i>	<a href="#">San Luis Obispo Pyrg</a>	Riparian/Streams	G1
<i>Carpenteria californica</i>	<a href="#">Tree Anemone</a>	Riparian/Streams	G1
<i>Saldula usingeri</i>	<a href="#">Wilbur Springs Shorebug</a>	Riparian/Streams	G1
<i>Protodufourea zavortinki</i>	<a href="#">Zavortink's Protodufourea Bee</a>	Riparian/Streams	G1
<i>Gila orcuttii</i>	<a href="#">Arroyo Chub</a>	Riparian/Streams	G2
<i>Anaxyrus californicus</i>	<a href="#">Arroyo Toad</a>	Riparian/Streams	G2
<i>Rana draytonii</i>	<a href="#">California Red-legged Frog</a>	Riparian/Streams	G2
<i>Ambystoma californiense</i>	<a href="#">California Tiger Salamander</a>	Riparian/Streams	G2
<i>Verbena californica</i>	<a href="#">California Vervain</a>	Riparian/Streams	G2
<i>Cosumnoperla hypocrena</i>	<a href="#">Cosumnes Stripetail</a>	Riparian/Streams	G2
<i>Malacothamnus davidsonii</i>	<a href="#">Davidson's Bushmallow</a>	Riparian/Streams	G2
<i>Legenere limosa</i>	<a href="#">False Venus'-looking-glass</a>	Riparian/Streams	G2
<i>Collomia rawsoniana</i>	<a href="#">Flaming Trumpet</a>	Riparian/Streams	G2
<i>Cirsium fontinale</i>	<a href="#">Fountain Thistle</a>	Riparian/Streams	G2
<i>Thamnophis gigas</i>	<a href="#">Giant Gartersnake</a>	Riparian/Streams	G2
<i>Pseudobahia bahiifolia</i>	<a href="#">Hartweg's Golden Sunburst</a>	Riparian/Streams	G2
<i>Batrachoseps simatus</i>	<a href="#">Kern Canyon Slender Salamander</a>	Riparian/Streams	G2
<i>Erigeron multiceps</i>	<a href="#">Kern River Fleabane</a>	Riparian/Streams	G2
<i>Batrachoseps regius</i>	<a href="#">Kings River Slender Salamander</a>	Riparian/Streams	G2
<i>Lanx patelloides</i>	<a href="#">Kneecap Lanx</a>	Riparian/Streams	G2

All management recommendations assume that operators and land managers are following all applicable BMPs, laws, and regulations.

# CENTRAL CALIFORNIA FOOTHILLS AND COASTAL MOUNTAINS Ecoregion

## G1 and G2 Species Habitat Management Guidelines



SCIENTIFIC NAME	COMMON NAME	HABITAT	STATUS
<i>Hydromantes brunus</i>	<a href="#">Limestone Salamander</a>	Riparian/Streams	G2
<i>Lytta molesta</i>	<a href="#">Molestan Blister Beetle</a>	Riparian/Streams	G2
<i>Fluminicola seminalis</i>	<a href="#">Nugget Pebblesnail</a>	Riparian/Streams	G2
<i>Optioservus canus</i>	<a href="#">Pinnacles Optioservus Riffle Beetle</a>	Riparian/Streams	G2
<i>Navarretia prostrata</i>	<a href="#">Prostrate Navarretia</a>	Riparian/Streams	G2
<i>Taricha rivularis</i>	<a href="#">Red-bellied Newt</a>	Riparian/Streams	G2
<i>Monadenia infumata</i>	<a href="#">Redwood Sideband</a>	Riparian/Streams	G2
<i>Hydrochara rickseckeri</i>	<a href="#">Ricksecker's Water Scavenger Beetle</a>	Riparian/Streams	G2
<i>Archoplites interruptus</i>	<a href="#">Sacramento Perch</a>	Riparian/Streams	G2
<i>Nevusia cliftonii</i>	<a href="#">Shasta Snow-wreath</a>	Riparian/Streams	G2
<i>Symphyotrichum lentum</i>	<a href="#">Suisun Marsh Aster</a>	Riparian/Streams	G2
<i>Batrachoseps stebbinsi</i>	<a href="#">Tehachapi Slender Salamander</a>	Riparian/Streams	G2
<i>Caecidotea tomalensis</i>	<a href="#">Tomales Isopod</a>	Riparian/Streams	G2
<i>Eryngium pinnatisectum</i>	<a href="#">Tuolumne Coyote-thistle</a>	Riparian/Streams	G2
<i>Dirca occidentalis</i>	<a href="#">Western Leatherwood</a>	Riparian/Streams	G2
<i>Spea hammondi</i>	<a href="#">Western Spadefoot</a>	Riparian/Streams	G2
<a href="#">Navarretia paradoxiclara</a>		Riparian/Streams	G2
<i>Triquetrella californica</i>	<a href="#">California Triquetrella Moss</a>	Sand/Dune	G2
<i>Sidalcea robusta</i>	<a href="#">Butte County Checker-mallow</a>	Savanna	G2
<i>Arctostaphylos pallida</i>	<a href="#">Alameda Manzanita</a>	Shrubland/Chaparral	G1
<i>Banksula incredula</i>	<a href="#">Incredible Harvestman</a>	Shrubland/Chaparral	G1
<i>Eriodictyon altissimum</i>	<a href="#">Indian Knob Mountainbalm</a>	Shrubland/Chaparral	G1
<i>Chorizanthe aphanantha</i>	<a href="#">Irish Hills Spineflower</a>	Shrubland/Chaparral	G1
<i>Hesperolinon congestum</i>	<a href="#">Marin Western Flax</a>	Shrubland/Chaparral	G1
<i>Arctostaphylos montaraensis</i>	<a href="#">Montara Manzanita</a>	Shrubland/Chaparral	G1
<i>Eriogonum truncatum</i>	<a href="#">Mt. Diablo Buckwheat</a>	Shrubland/Chaparral	G1
<i>Trichostema ruygtii</i>	<a href="#">Napa Bluecurls</a>	Shrubland/Chaparral	G1
<i>Arctostaphylos pacifica</i>	<a href="#">Pacific Manzanita</a>	Shrubland/Chaparral	G1
<i>Arctostaphylos pajaroensis</i>	<a href="#">Pajaro Manzanita</a>	Shrubland/Chaparral	G1
<i>Arctostaphylos imbricata</i>	<a href="#">San Bruno Mountain Manzanita</a>	Shrubland/Chaparral	G1
<i>Lupinus ludovicianus</i>	<a href="#">San Luis Obispo County Lupine</a>	Shrubland/Chaparral	G1
<i>Arctostaphylos pumila</i>	<a href="#">Sandmat Manzanita</a>	Shrubland/Chaparral	G1
<i>Campanula sharsmithiae</i>	<a href="#">Sharsmith's Harebell</a>	Shrubland/Chaparral	G1
<i>Sulcaria isidiifera</i>	<a href="#">Splitting Yarn Lichen</a>	Shrubland/Chaparral	G1
<i>Calystegia stebbinsii</i>	<a href="#">Stebbins' Morning-glory</a>	Shrubland/Chaparral	G1
<i>Piperia yadonii</i>	<a href="#">Yadon's Rein Orchid</a>	Shrubland/Chaparral	G1
<i>Delphinium luteum</i>	<a href="#">Yellow Larkspur</a>	Shrubland/Chaparral	G1
<a href="#">Eriastrum ertterae</a>		Shrubland/Chaparral	G1
<i>Arctostaphylos bakeri</i>	<a href="#">Baker's Manzanita</a>	Shrubland/Chaparral	G2

All management recommendations assume that operators and land managers are following all applicable BMPs, laws, and regulations.

# CENTRAL CALIFORNIA FOOTHILLS AND COASTAL MOUNTAINS Ecoregion



## G1 and G2 Species Habitat Management Guidelines

SCIENTIFIC NAME	COMMON NAME	HABITAT	STATUS
<i>Crocانthemum suffrutescens</i>	<a href="#">Bisbee Peak Rushrose</a>	Shrubland/Chaparral	G2
<i>Sidalcea hickmanii</i>	<a href="#">Chaparral Checkerbloom</a>	Shrubland/Chaparral	G2
<i>Lupinus sericatus</i>	<a href="#">Cobb Mountain Lupine</a>	Shrubland/Chaparral	G2
<i>Helianthella castanea</i>	<a href="#">Diablo Rockrose</a>	Shrubland/Chaparral	G2
<i>Ericameria fasciculata</i>	<a href="#">Eastwood's Goldenweed</a>	Shrubland/Chaparral	G2
<i>Fritillaria brandegeei</i>	<a href="#">Greenhorn Fritillary</a>	Shrubland/Chaparral	G2
<i>Malacothamnus hallii</i>	<a href="#">Hall's Bushmallow</a>	Shrubland/Chaparral	G2
<i>Ceanothus hearstiorum</i>	<a href="#">Hearst's Ceanothus</a>	Shrubland/Chaparral	G2
<i>Plagiobothrys uncinatus</i>	<a href="#">Hooked Popcorn-flower</a>	Shrubland/Chaparral	G2
<i>Agrostis hooveri</i>	<a href="#">Hoover's Bentgrass</a>	Shrubland/Chaparral	G2
<i>Layia jonesii</i>	<a href="#">Jones' Layia</a>	Shrubland/chaparral	G2
<i>Mimulus norrisii</i>	<a href="#">Kaweah Monkeyflower</a>	Shrubland/Chaparral	G2
<i>Eriodictyon capitatum</i>	<a href="#">Lompoc Yerba Santa</a>	Shrubland/Chaparral	G2
<i>Navarretia rosulata</i>	<a href="#">Marin County Navarretia</a>	Shrubland/Chaparral	G2
<i>Streptanthus hispidus</i>	<a href="#">Mt. Diablo Jewelflower</a>	Shrubland/Chaparral	G2
<i>Arctostaphylos auriculata</i>	<a href="#">Mt. Diablo Manzanita</a>	Shrubland/Chaparral	G2
<i>Ceanothus purpureus</i>	<a href="#">Napa Ceanothus</a>	Shrubland/Chaparral	G2
<i>Chorizanthe rectispina</i>	<a href="#">One-awned Chorizanthe</a>	Shrubland/Chaparral	G2
<i>Arctostaphylos pechoensis</i>	<a href="#">Pecho Manzanita</a>	Shrubland/Chaparral	G2
<i>Sanicula saxatilis</i>	<a href="#">Rock Sanicle</a>	Shrubland/Chaparral	G2
<i>Fritillaria viridea</i>	<a href="#">San Benito Fritillary</a>	Shrubland/Chaparral	G2
<i>Arctostaphylos luciana</i>	<a href="#">Santa Lucia Manzanita</a>	Shrubland/Chaparral	G2
<i>Arctostaphylos pilosula</i>	<a href="#">Santa Margarita Manzanita</a>	Shrubland/Chaparral	G2
<i>Horkelia tenuiloba</i>	<a href="#">Santa Rosa Oceanspray</a>	Shrubland/Chaparral	G2
<i>Arctostaphylos rudis</i>	<a href="#">Shagbark Manzanita</a>	Shrubland/Chaparral	G2
<i>Mimulus gracilipes</i>	<a href="#">Slenderstalk Monkeyflower</a>	Shrubland/Chaparral	G2
<i>Ceanothus sonomensis</i>	<a href="#">Sonoma Ceanothus</a>	Shrubland/Chaparral	G2
<i>Lessingia micradenia</i>	<a href="#">Tamalpais Lessingia</a>	Shrubland/Chaparral	G2
<i>Stygobromus cherylae</i>	<a href="#">Barr's Amphipod</a>	Springs	G1
<i>Hygrotus curvipes</i>	<a href="#">Curved-foot Hygrotus Diving Beetle</a>	Temporary Pools	G1
<i>Sedella leiocarpa</i>	<a href="#">Lake County Mock Stonecrop</a>	Temporary Pools	G1
<i>Branchinecta longiantenna</i>	<a href="#">Longhorn Fairy Shrimp</a>	Temporary Pools	G1
<i>Orcuttia viscida</i>	<a href="#">Sacramento Orcutt Grass</a>	Temporary Pools	G1
<i>Orcuttia inaequalis</i>	<a href="#">San Joaquin Valley Orcutt Grass</a>	Temporary Pools	G1
<i>Agrostis lacuna-vernalis</i>	<a href="#">Vernal Pool Bentgrass</a>	Temporary Pools	G1
<i>Trifolium jokerstii</i>	<a href="#">Butte County Golden Clover</a>	Temporary Pools	G2
<i>Delphinium recurvatum</i>	<a href="#">Byron Larkspur</a>	Temporary Pools	G2
<i>Branchinecta conservatio</i>	<a href="#">Conservancy Fairy Shrimp</a>	Temporary Pools	G2
<i>Fritillaria liliacea</i>	<a href="#">Fragrant Fritillary</a>	Temporary Pools	G2

All management recommendations assume that operators and land managers are following all applicable BMPs, laws, and regulations.



# CENTRAL CALIFORNIA FOOTHILLS AND COASTAL MOUNTAINS Ecoregion

## G1 and G2 Species Habitat Management Guidelines



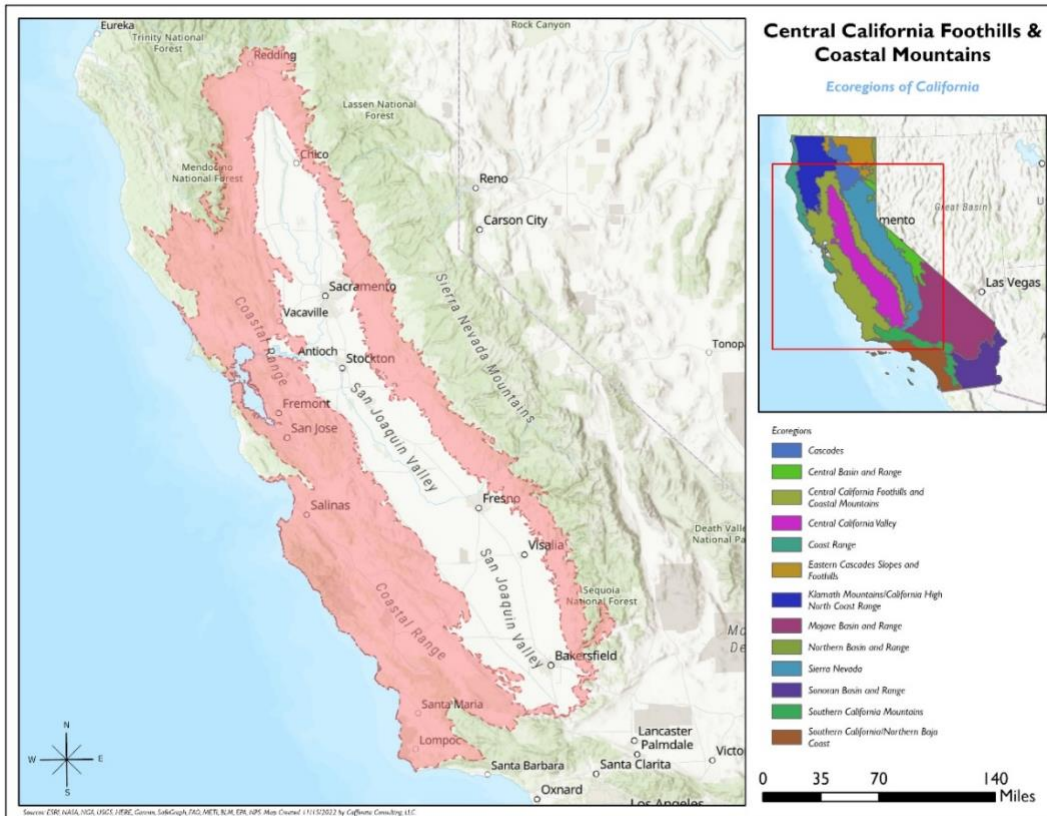
SCIENTIFIC NAME	COMMON NAME	HABITAT	STATUS
<i>Dumontia oregonensis</i>	<a href="#">Hairy Water Flea</a>	Temporary Pools	G2
<i>Agrostis hendersonii</i>	<a href="#">Henderson's Bentgrass</a>	Temporary Pools	G2
<i>Heterotheca shevockii</i>	<a href="#">Kern Canyon False Goldenaster</a>	Temporary Pools	G2
<i>Microseris paludosa</i>	<a href="#">Marsh Silverpuffs</a>	Temporary Pools	G2
<i>Branchinecta mesovallensis</i>	<a href="#">Midvalley Fairy Shrimp</a>	Temporary Pools	G2
<i>Mimulus pulchellus</i>	<a href="#">Pansy Monkeyflower</a>	Temporary Pools	G2
<i>Navarretia myersii</i>	<a href="#">Pincushion Navarretia</a>	Temporary Pools	G2
<i>Trifolium piorkowskii</i>	<a href="#">Piorkowski's Clover</a>	Temporary Pools	G2
<i>Juncus leiospermus</i>	<a href="#">Red Bluff Rush</a>	Temporary Pools	G2
<i>Atriplex persistens</i>	<a href="#">Sacramento Saltbush</a>	Temporary Pools	G2
<i>Trifolium buckwestiorum</i>	<a href="#">Santa Cruz Clover</a>	Temporary Pools	G2
<i>Orcuttia tenuis</i>	<a href="#">Slender Orcutt Grass</a>	Temporary Pools	G2
<i>Eryngium spinosepalum</i>	<a href="#">Spiny Sepaled Coyote-thistle</a>	Temporary Pools	G2
<i>Navarretia fossalis</i>	<a href="#">Spreading Navarretia</a>	Temporary Pools	G2
<i>Meconella oregana</i>	<a href="#">White Meconella</a>	Temporary Pools	G2
<i>Andrena blennospermatis</i>	<a href="#">a vernal pool andrenid bee</a>	Upland	G2
<i>Limnanthes bakeri</i>	<a href="#">Baker's Meadowfoam</a>	Wetland	G1
<i>Brodiaea pallida</i>	<a href="#">Chinese Camp Brodiaea</a>	Wetland	G1
<i>Sidalcea stipularis</i>	<a href="#">Scadden Flat Checkerbloom</a>	Wetland	G1
<i>Lilium occidentale</i>	<a href="#">Western Lily</a>	Wetland	G1
<i>Atriplex depressa</i>	<a href="#">Bittlescale</a>	Wetland	G2
<i>Gratiola heterosepala</i>	<a href="#">Boggs Lake Hedge-hyssop</a>	Wetland	G2
<i>Lilaeopsis masonii</i>	<a href="#">Mason's Lilaeopsis</a>	Wetland	G2
<i>Tryonia imitator</i>	<a href="#">Mimic Tryonia</a>	Wetland	G2
<i>Layia munzii</i>	<a href="#">Munz's Tidy-tips</a>	Wetland	G2
<i>Pleuropogon hooverianus</i>	<a href="#">North Coast False Semaphore Grass</a>	Wetland	G2
<i>Ischnura gemina</i>	<a href="#">San Francisco Forktail</a>	Wetland	G2
<i>Pogogyne clareana</i>	<a href="#">Santa Lucia Pogogyne</a>	Wetland	G2
<i>Cryptantha crinite</i>	<a href="#">Silky Cryptantha</a>	Wetland	G2
<i>Cirsium hydrophilum</i>	<a href="#">Suisun Thistle</a>	Wetland	G2
<a href="#">Carex klamathensis</a>		Wetland	G2

\*Species links provided when available

All management recommendations assume that operators and land managers are following all applicable BMPs, laws, and regulations.

# CENTRAL CALIFORNIA FOOTHILLS AND COASTAL MOUNTAINS Ecoregion

## G1 and G2 Species Habitat Management Guidelines



All management recommendations assume that operators and land managers are following all applicable BMPs, laws, and regulations.