

CENTRAL CALIFORNIA VALLEY ECOREGION

G1 and G2 Species Habitat Management Guidelines



INTRODUCTION

The Sustainable Forestry Initiative® (SFI) [2022 Standards](#) include requirements that promote and conserve Forests with Exceptional Conservation Value (FECV), which includes critically imperiled (G1) and imperiled (G2) species. This fact sheet summarizes the analysis of FECV habitat within this ecoregion and provides habitat management recommendations that would benefit species potentially found here.

HABITAT TYPES

- Grassland
- Mixed Conifer Forest
- Riparian/Streams/Wetlands/Temporary Pools/Bog/Fen
- Special Sites (Bare Rock/Talus, Barrens, Dunes, Savanna, Shrubland/Chapparal)

GRASSLAND MANAGEMENT

- Protect known locations
- Buffer grassland areas

MIXED CONIFER FOREST MANAGEMENT

- Protect known locations
- Retain legacy trees, stumps, and logs
- Retain large diameter trees with cavities or broken tops
- Leave skips and gaps with dense shrub component
- Retain large slash into piles

RIPARIAN/STREAMS/TEMPORARY POOLS/BOG/FEN MANAGEMENT

- Protect known locations
- Maintain well vegetated riparian buffers
- Plant a diversity of both hardwood and conifer trees
- Retain large diameter trees near streams, rivers and wetlands
- Buffer wetlands, springs, and headwater areas

SPECIAL SITES MANAGEMENT

- Protect known locations
- Maintain and buffer special sites



Western Spadefoot



Calico Monkeyflower



California Reg-legged Frog

All management recommendations assume that operators and land managers are following all applicable BMPs, laws, and regulations.

CENTRAL CALIFORNIA VALLEY ECOREGION

G1 and G2 Species Habitat Management Guidelines



SCIENTIFIC NAME	COMMON NAME	HABITAT	STATUS
<i>Tortula californica</i>	California Screw Moss	Bare Rock/Talus	G2
<i>Trifolium amoenum</i>	Showy Indian Clover	Barrens	G1
<i>Linderiella occidentalis</i>	California Fairy Shrimp	Bog/Fen	G2
<i>Eucerceris ruficeps</i>	Redheaded Sphecid Wasp	Dunes	G2
<i>Atriplex subtilis</i>	Deltoid-bract Saltbush	Grassland	G1
<i>Pseudobahia peirsonii</i>	San Joaquin Adobe Sunburst	Grassland	G1
<i>Fritillaria striata</i>	Striped Adobe Lily	Grassland	G1
<i>Helianthus winteri</i>	Winter's Sunflower	Grassland	G1
<i>Balsamorhiza macrolepis</i>	Big-scale Balsamroot	Grassland	G2
<i>Layia septentrionalis</i>	Colusa Tidy-tips	Grassland	G2
<i>Bombus crotchii</i>	Crotch's Bumble Bee	Grassland	G2
<i>Calycadenia hooveri</i>	Hoover's Rosinweed	Grassland	G2
<i>Efferia antiochi</i>	Antioch Efferian Robberfly	Mixed Conifer Forest	G1
<i>Gymnogyps californianus</i>	California Condor	Mixed Conifer Forest	G1
<i>Brodiaea insignis</i>	Kaweah Brodiaea	Mixed Conifer Forest	G1
<i>Stylocline masonii</i>	Mason's Neststraw	Mixed Conifer Forest	G1
<i>Fritillaria pluriflora</i>	Adobe Lily	Mixed Conifer Forest	G2
<i>Clarkia rostrata</i>	Beaked Clarkia	Mixed Conifer Forest	G2
<i>Mimulus pictus</i>	Calico Monkeyflower	Mixed Conifer Forest	G2
<i>Lagophylla dichotoma</i>	Forked Hare-leaf	Mixed Conifer Forest	G2
<i>Sidalcea keckii</i>	Keck's Checker-mallow	Mixed Conifer Forest	G2
<i>Navarretia setiloba</i>	Piute Mountains Navarretia	Mixed Conifer Forest	G2
<i>Lewisia serrata</i>	Saw-toothed Lewisia	Mixed Conifer Forest	G2
<i>Eryngium racemosum</i>	Delta Coyote-thistle	Riparian/Streams	G1
<i>Elaphrus viridis</i>	Delta Green Ground Beetle	Riparian/Streams	G1
<i>Tuctoria greenei</i>	Green's Awnless Orcutt Grass	Riparian/Streams	G1
<i>Lampetra hubbsi</i>	Kern Brook Lamprey	Riparian/Streams	G1
<i>Cirsium crassicaule</i>	Slough Thistle	Riparian/Streams	G1
<i>Protodufourea zavortinki</i>	Zavortink's Protodufourea Bee	Riparian/Streams	G1
<i>Rana draytonii</i>	California Red-legged Frog	Riparian/Streams	G2
<i>Ambystoma californiense</i>	California Tiger Salamander	Riparian/Streams	G2
<i>Legenere limosa</i>	False Venus'-looking-glass	Riparian/Streams	G2
<i>Thamnophis gigas</i>	Giant Gartersnake	Riparian/Streams	G2
<i>Pseudobahia bahiifolia</i>	Hartweg's Golden Sunburst	Riparian/Streams	G2
<i>Lanx patelloides</i>	Kneecap Lanx	Riparian/Streams	G2
<i>Lytta molesta</i>	Molestan Blister Beetle	Riparian/Streams	G2
<i>Navarretia prostrata</i>	Prostrate Navarretia	Riparian/Streams	G2
<i>Monadenia infumata</i>	Redwood Sideband	Riparian/Streams	G2
<i>Hydrochara rickseckeri</i>	Ricksecker's Water Scavenger Beetle	Riparian/Streams	G2
<i>Archoplites interruptus</i>	Sacramento Perch	Riparian/Streams	G2
<i>Symphotrichum lentum</i>	Suisun Marsh Aster	Riparian/Streams	G2

All management recommendations assume that operators and land managers are following all applicable BMPs, laws, and regulations.

CENTRAL CALIFORNIA VALLEY ECOREGION

G1 and G2 Species Habitat Management Guidelines



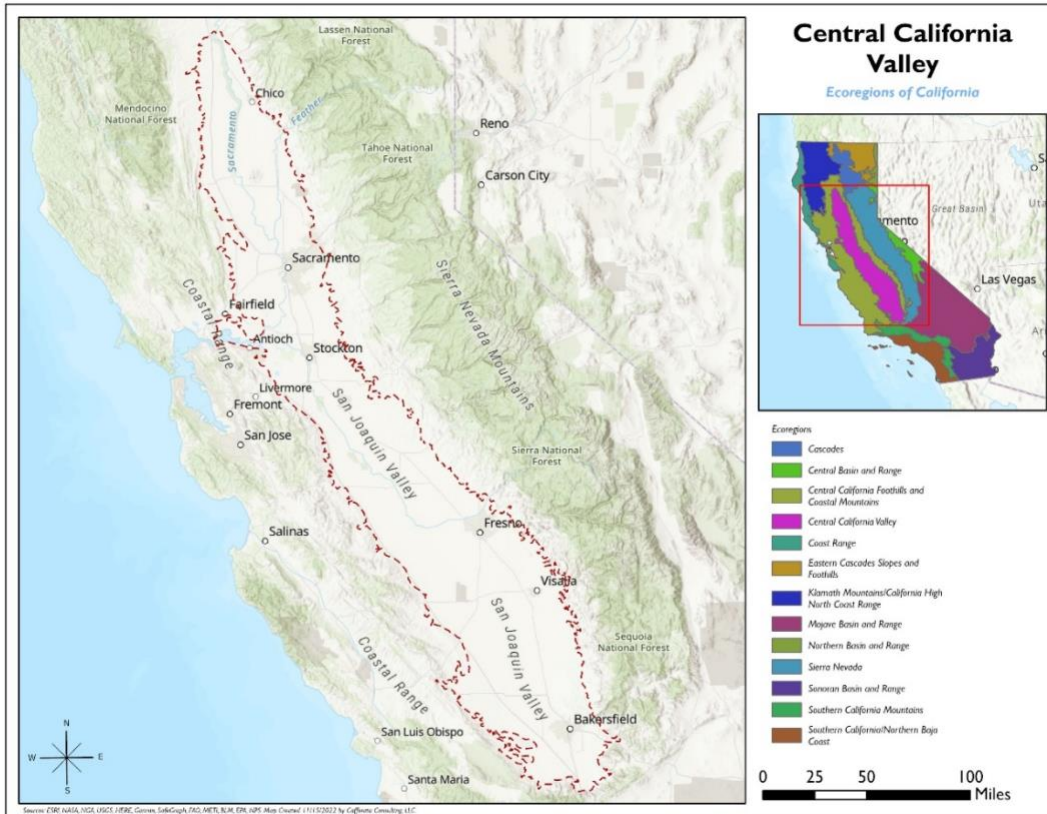
SCIENTIFIC NAME	COMMON NAME	HABITAT	STATUS
<i>Spea hammondii</i>	Western Spadefoot	Riparian/Streams	G2
<i>Sidalcea robusta</i>	Butte County Checker-mallow	Savanna	G2
<i>Arctostaphylos bakeri</i>	Baker's Manzanita	Shrubland/Chaparral	G2
<i>Hygrotus curvipes</i>	Curved-foot Hygrotus Diving Beetle	Temporary Pools	G1
<i>Orcuttia pilosa</i>	Hairy Orcutt Grass	Temporary Pools	G1
<i>Chamaesyce hooveri</i>	Hoover's Broomspurge	Temporary Pools	G1
<i>Branchinecta longiantenna</i>	Longhorn Fairy Shrimp	Temporary Pools	G1
<i>Orcuttia viscida</i>	Sacramento Orcutt Grass	Temporary Pools	G1
<i>Orcuttia inaequalis</i>	San Joaquin Valley Orcutt Grass	Temporary Pools	G1
<i>Trifolium jokerstii</i>	Butte County Golden Clover	Temporary Pools	G2
<i>Delphinium recurvatum</i>	Byron Larkspur	Temporary Pools	G2
<i>Branchinecta conservatio</i>	Conservancy Fairy Shrimp	Temporary Pools	G2
<i>Fritillaria liliacea</i>	Fragrant Fritillary	Temporary Pools	G2
<i>Dumontia oregonensis</i>	Hairy Water Flea	Temporary Pools	G2
<i>Agrostis hendersonii</i>	Henderson's Bentgrass	Temporary Pools	G2
<i>Heterotheca shevockii</i>	Kern Canyon False Goldenaster	Temporary Pools	G2
<i>Branchinecta mesovallensis</i>	Midvalley Fairy Shrimp	Temporary Pools	G2
<i>Navarretia myersii</i>	Pincushion Navarretia	Temporary Pools	G2
<i>Juncus leiospermus</i>	Red Bluff Rush	Temporary Pools	G2
<i>Atriplex persistens</i>	Sacramento Saltbush	Temporary Pools	G2
<i>Orcuttia tenuis</i>	Slender Orcutt Grass	Temporary Pools	G2
<i>Eryngium spinosepalum</i>	Spiny Sepaled Coyote-thistle	Temporary Pools	G2
<i>Andrena blennospermatis</i>	a vernal pool andrenid bee	Upland	G2
<i>Atriplex depressa</i>	Bittlescale	Wetland	G2
<i>Gratiola heterosepala</i>	Boggs Lake Hedge-hyssop	Wetland	G2
<i>Lilaeopsis masonii</i>	Mason's Lilaeopsis	Wetland	G2
<i>Layia munzii</i>	Munz's Tidy-tips	Wetland	G2
<i>Cryptantha crinita</i>	Silky Cryptantha	Wetland	G2

*Species links provided when available

All management recommendations assume that operators and land managers are following all applicable BMPs, laws, and regulations.

CENTRAL CALIFORNIA VALLEY ECOREGION

G1 and G2 Species Habitat Management Guidelines



All management recommendations assume that operators and land managers are following all applicable BMPs, laws, and regulations.