

MONTANA NORTHERN ROCKIES ECOREGION

G1 and G2 Species Habitat Management Guidelines



INTRODUCTION

The Sustainable Forestry Initiative® (SFI) [2022 Standards](#) include requirements that promote and conserve Forests with Exceptional Conservation Value (FECV), which includes critically imperiled (G1) and imperiled (G2) species. This fact sheet summarizes the analysis of FECV habitat within this ecoregion and provides habitat management recommendations that would benefit species potentially found here.

HABITAT TYPES

- Bare Rock/Talus
- Mixed Conifer Forest
- Riparian/Streams
- Special Sites (Grassland, Shrubland, Alpine)

BARE ROCK/TALUS MANAGEMENT

- Protect known locations
- Buffer special sites

MIXED CONIFER FOREST MANAGEMENT

- Protect known locations,
- Retain legacy trees, stumps and logs
- Retain large diameter trees with cavities or broken tops
- Leave skips and gaps with dense shrub component
- Retain large slash into piles

RIPARIAN/STREAMS MANAGEMENT

- Protect known locations
- Maintain well vegetated riparian buffers
- Plant a diversity of both hardwood and conifer trees
- Retain large diameter trees near streams and rivers
- Buffer wetlands, springs, and headwater areas

SPECIAL SITES MANAGEMENT

- Provide floral resources such as Asters, Chrysothamnus, and Cirsium
- Protect known locations
- Provide buffers



Suckley Cuckoo Bumble Bee



**Northern Rocky Mountains
Refugium Caddisfly**



Bitterroot Mountainsnail

All management recommendations assume that operators and land managers are following all applicable BMPs, laws, and regulations.

MONTANA NORTHERN ROCKIES ECOREGION

G1 and G2 Species Habitat Management Guidelines



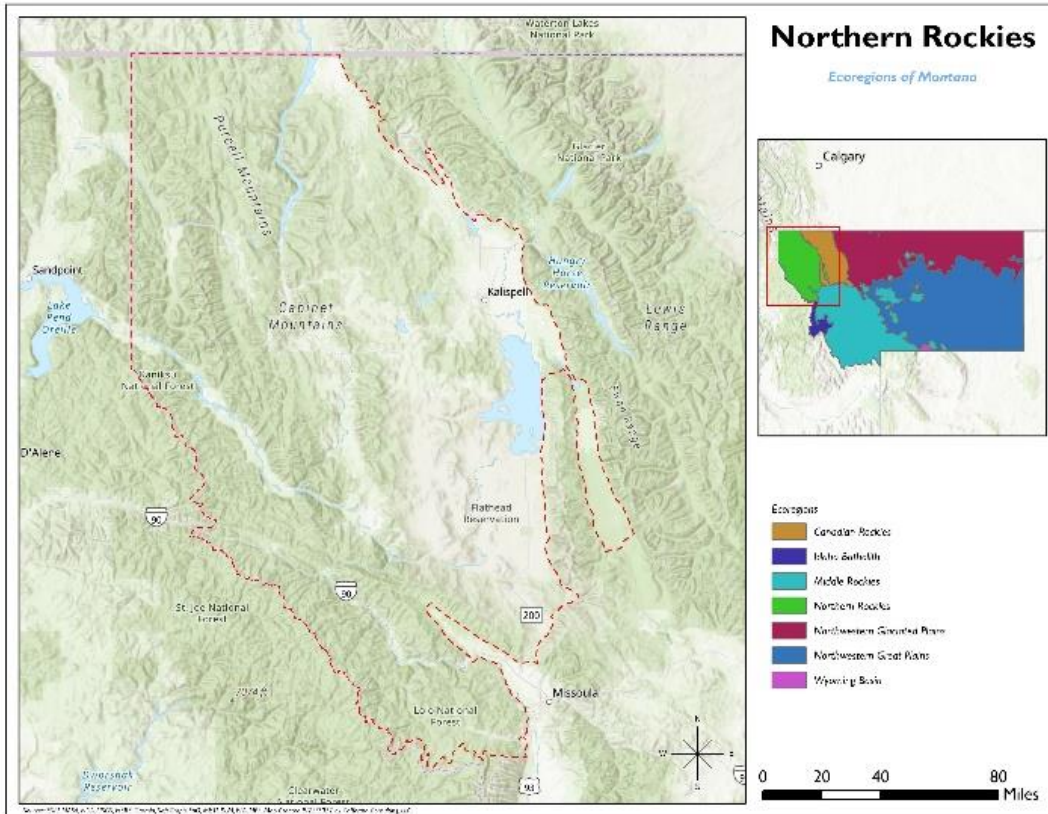
SCIENTIFIC NAME	COMMON NAME	HABITAT	STATUS
<i>Douglasia conservatorum</i>	Bloom Peak Douglasia	Alpine	G1
<i>Physaria humilis</i>	Bitterroot Bladderpod	Alpine	G2
<i>Nodobryoria subdivergens</i>	Alpine Foxtail Lichen	Alpine	G2G3
<i>Corypus cochlearis</i>	A Millipede	Bare Rock/Talus	G1G3
<i>Oreohelix elrodi</i>	Carinate Mountainsnail	Bare Rock/Talus	G2
<i>Oreohelix haydeni</i>	Lyrate Mountainsnail	Bare Rock/Talus	G2
<i>Silene spaldingii</i>	Spalding's Catchfly	Grassland	G2
<i>Oreohelix amariradix</i>	Bitterroot Mountainsnail	Mixed Conifer Forest	G1G2
<i>Orthogmus oculatus</i>	A Millipede	Mixed Conifer Forest	G1G3
<i>Taiyutyla curvata</i>	A Millipede	Mixed Conifer Forest	G1G3
<i>Grimmia brittoniae</i>	Britton's Dry Rock Moss	Mixed Conifer Forest	G2
<i>Suwallia salish</i>	A Stonefly	Riparian/Streams	G1
<i>Goereilla baumanni</i>	Northern Rocky Mountains Refugium Caddisfly	Riparian/Streams	G1
<i>Philocasca banksi</i>	A Caddisfly	Riparian/Streams	G1G3
<i>Austrotyla montani</i>	A Millipede	Riparian/Streams	G1G3
<i>Rhyacophila alexanderi</i>	Alexander's Rhyacophilan Caddisfly	Riparian/Streams	G2
<i>Soliperla salish</i>	Clearwater Roachfly	Riparian/Streams	G2
<i>Sweltsa durfeei</i>	Lolo Sailyfly	Riparian/Streams	G2
<i>Soyedina potteri</i>	Northern Rocky Mountains Refugium Stonefly	Riparian/Streams	G2
<i>Fisherola nuttalli</i>	Shortface Lanx	Riparian/Streams	G2
<i>Salmasellus steganothrix</i>	A Cave Obligate Isopod	Riparian/Streams	G2G3
<i>Cinygmula gartrelli</i>	A Mayfly	Riparian/Streams	G2G3
<i>Rhyacophila unimaculata</i>	A Rhyacophilan Caddisfly	Riparian/Streams	G2G3
<i>Megaleuctra stigmata</i>	Giant Needlefly	Riparian/Streams	G2G3
<i>Bombus suckleyi</i>	Suckley Cuckoo Bumble Bee	Shrubland	G2G3

*Species links provided when available

All management recommendations assume that operators and land managers are following all applicable BMPs, laws, and regulations.

MONTANA NORTHERN ROCKIES ECOREGION

G1 and G2 Species Habitat Management Guidelines



All management recommendations assume that operators and land managers are following all applicable BMPs, laws, and regulations.