

CALIFORNIA SIERRA NEVADA ECOREGION

G1 and G2 Species Habitat Management Guidelines



INTRODUCTION

The Sustainable Forestry Initiative® (SFI) [2022 Standards](#) include requirements that promote and conserve Forests with Exceptional Conservation Value (FECV), which includes critically imperiled (G1) and imperiled (G2) species. This fact sheet summarizes the analysis of FECV habitat within this ecoregion and provides habitat management recommendations that would benefit species potentially found here.

HABITAT TYPES

- Bare Rock/Talus
- Grassland
- Mixed Conifer Forest
- Riparian/Streams/Wetlands
- Shrubland/Chaparral
- Special Sites (Alpine, Barrens, Bare Ground, Bog/Fen, Cave, Cliff, Forest Edge, Lake, Springs, Temporary Pools)

BARE ROCK/TALUS MANAGEMENT

- Protect known locations
- Buffer special sites

GRASSLAND MANAGEMENT

- Protect known locations
- Buffer grassland areas

MIXED CONIFER FOREST MANAGEMENT

- Protect known locations
- Retain legacy trees, stumps, and logs
- Retain large diameter trees with cavities or broken tops
- Leave skips and gaps with dense shrub component
- Retain large slash into piles



Calico Monkeyflower



Shaggy Hair Lupine



**Sierra Nevada
Yellow-legged Frog**

All management recommendations assume that operators and land managers are following all applicable BMPs, laws, and regulations.

CALIFORNIA SIERRA NEVADA ECOREGION

G1 and G2 Species Habitat Management Guidelines



RIPARIAN/STREAMS/WETLANDS MANAGEMENT

- Protect known locations
- Maintain well vegetated riparian buffers
- Plant a diversity of both hardwood and conifer trees
- Retain large diameter trees near streams, rivers and wetlands
- Buffer wetlands, springs, and headwater areas

SHRUBLAND/CHAPARRAL MANAGEMENT

- Protect known locations
- Buffer shrubland and chaparral areas

SPECIAL SITES MANAGEMENT

- Protect known locations
- Maintain and buffer special sites

SCIENTIFIC NAME	COMMON NAME	HABITAT	STATUS
<i>Lepidostoma ermanae</i>	Cold Spring Caddisfly	Alpine	G1
<i>Draba sharsmithii</i>	Mt. Whitney Draba	Alpine	G2
<i>Astragalus ravenii</i>	Raven's Milkvetch	Alpine	G2
<i>Navarretia miwukensis</i>		Bare Ground	G1
<i>Calicina conifera</i>	Crane Flat harvestman	Bare Rock/Talus	G1
<i>Eriogonum eastwoodianum</i>	Eastwood's Buckwheat	Bare Rock/Talus	G2
<i>Hackelia sharsmithii</i>	Sharsmith's Stickseed	Bare Rock/Talus	G2
<i>Mielichhoferia shevockii</i>	Shevock's Copper Moss	Bare Rock/Talus	G2
<i>Draba asterophora</i>	Tahoe Whitlow-grass	Bare Rock/Talus	G2
<i>Arctostaphylos myrtifolia</i>	lone Manzanita	Barrens	G1
<i>Boechera constancei</i>	Constance's Rockcress	Barrens	G2
<i>Horkelia parryi</i>	Parry's Horkelia	Barrens	G2
<i>Eleocharis torticulmis</i>	Twisted Spikerush	Bog/Fen	G1
<i>Oreostemma elatum</i>	Plumas Mountaincrown	Bog/Fen	G2
<i>Platanthera yosemitensis</i>	Yosemite Bog-orchid	Bog/Fen	G2
<i>Stygobromus gradyi</i>	Grady's Cave Amphipod	Cave	G1
<i>Stygobromus grahami</i>	Graham's Cave Amphipod	Cave	G2
<i>Monadenia yosemitensis</i>	Indian Yosemite Snail	Cliff	G1
<i>Raillardiopsis muirii</i>	Muir's Tarplant	Cliff	G2
<i>Clarkia springvillensis</i>	Springville Clarkia	Forest Edge	G2
<i>Astragalus austiniae</i>	Austin's Milkvetch	Grassland	G2
<i>Balsamorhiza macrolepis</i>	Big-scale Balsamroot	Grassland	G2

All management recommendations assume that operators and land managers are following all applicable BMPs, laws, and regulations.

CALIFORNIA SIERRA NEVADA ECOREGION

G1 and G2 Species Habitat Management Guidelines



SCIENTIFIC NAME	COMMON NAME	HABITAT	STATUS
<i>Bombus crotchii</i>	Crotch's Bumble Bee	Grassland	G2
<i>Stygodromus tahoensis</i>	Lake Tahoe Stygodromid	Lake	G1
<i>Gymnogyps californianus</i>	California Condor	Mixed Conifer Forest	G1
<i>Brodiaea insignis</i>	Kaweah Brodiaea	Mixed Conifer Forest	G1
<i>Entosthodon kochii</i>	Koch's Cord-moss	Mixed Conifer Forest	G1
<i>Cistanthe pulchella</i>	Mariposa Pussy-paws	Mixed Conifer Forest	G1
<i>Clarkia lingulata</i>	Merced Clarkia	Mixed Conifer Forest	G1
<i>Arctostaphylos nissenana</i>	Nissenan Manzanita	Mixed Conifer Forest	G1
<i>Fremontodendron decumbens</i>	Pine Hill Flannelbush	Mixed Conifer Forest	G1
<i>Boechera pinzliae</i>	Pinzl's Rockcress	Mixed Conifer Forest	G1
<i>Cistanthe pygmaea</i>	Pygmy Pussy-paws	Mixed Conifer Forest	G1
<i>Ribes tularensis</i>	Sequoia Gooseberry	Mixed Conifer Forest	G1
<i>Streptanthus medeirosii</i>	Tejon Jewelflower	Mixed Conifer Forest	G1
<i>Punctum hannai</i>	Trinity Spot	Mixed Conifer Forest	G1
<i>Astragalus webberi</i>	Webber's Milkvetch	Mixed Conifer Forest	G1
<i>Triteleia piutensis</i>		Mixed Conifer Forest	G1
<i>Carex cyrtostachya</i>	Arching Sedge	Mixed Conifer Forest	G2
<i>Clarkia rostrata</i>	Beaked Clarkia	Mixed Conifer Forest	G2
<i>Gilia yorkii</i>	Boyden Cave Gily-flower	Mixed Conifer Forest	G2
<i>Mimulus pictus</i>	Calico Monkeyflower	Mixed Conifer Forest	G2
<i>Carex xerophila</i>	Chaparral Sedge	Mixed Conifer Forest	G2
<i>Lewisia congdonii</i>	Congdon's Lewisia	Mixed Conifer Forest	G2
<i>Lomatium congdonii</i>	Congdon's Lomatium	Mixed Conifer Forest	G2
<i>Trifolium dedeckerae</i>	Dedecker's Clover	Mixed Conifer Forest	G2
<i>Astragalus ertterae</i>	Ertter's Milkvetch	Mixed Conifer Forest	G2
<i>Lupinus padre-crowleyi</i>	Father Crowley's Lupine	Mixed Conifer Forest	G2
<i>Sedum albomarginatum</i>	Feather River Stonecrop	Mixed Conifer Forest	G2
<i>Ericameria gilmanii</i>	Gilman Goldenweed	Mixed Conifer Forest	G2
<i>Arctostaphylos hookeri</i>	Hooker's Manzanita	Mixed Conifer Forest	G2
<i>Tauschia howellii</i>	Howell's Tauschia	Mixed Conifer Forest	G2
<i>Allium jepsonii</i>	Jepson's Onion	Mixed Conifer Forest	G2
<i>Mimulus shevockii</i>	Kelso Creek Monkeyflower	Mixed Conifer Forest	G2
<i>Horkelia tularensis</i>	Kern Plateau Horkelia	Mixed Conifer Forest	G2
<i>Lewisia longipetala</i>	Long-petaled Lewisia	Mixed Conifer Forest	G2
<i>Petrophytum acuminatum</i>	Marble Rockmat	Mixed Conifer Forest	G2
<i>Astragalus monoensis</i>	Mono Milkvetch	Mixed Conifer Forest	G2
<i>Clarkia mosquinii</i>	Mosquin's Clarkia	Mixed Conifer Forest	G2
<i>Iris munzii</i>	Munz's Iris	Mixed Conifer Forest	G2
<i>Lomatium shevockii</i>	Owen's Peak Lomatium	Mixed Conifer Forest	G2
<i>Layia heterotricha</i>	Pale-yellow Layia	Mixed Conifer Forest	G2
<i>Navarretia setiloba</i>	Piute Mountains Navarretia	Mixed Conifer Forest	G2

All management recommendations assume that operators and land managers are following all applicable BMPs, laws, and regulations.

CALIFORNIA SIERRA NEVADA ECOREGION

G1 and G2 Species Habitat Management Guidelines



SCIENTIFIC NAME	COMMON NAME	HABITAT	STATUS
<i>Lewisia serrata</i>	Saw-toothed Lewisia	Mixed Conifer Forest	G2
<i>Heterotheca monarchensis</i>	Sequoia False Goldenaster	Mixed Conifer Forest	G2
<i>Monardella follettii</i>	Serpentine Mountainbalm	Mixed Conifer Forest	G2
<i>Lupinus spectabilis</i>	Shaggy Hair Lupine	Mixed Conifer Forest	G2
<i>Astragalus shevockii</i>	Shevock's Milkvetch	Mixed Conifer Forest	G2
<i>Erythronium pluriflorum</i>	Shuteye Peak Fawnlily	Mixed Conifer Forest	G2
<i>Mimulus filicaulis</i>	Slenderstem Monkeyflower	Mixed Conifer Forest	G2
<i>Clarkia australis</i>	Small Southern Clarkia	Mixed Conifer Forest	G2
<i>Allium shevockii</i>	Spanish Needle Onion	Mixed Conifer Forest	G2
<i>Lomatium stebbinsii</i>	Stebbins' Lomatium	Mixed Conifer Forest	G2
<i>Monardella stebbinsii</i>	Stebbins' Monardella	Mixed Conifer Forest	G2
<i>Monardella beneolens</i>	Sweet-smelling Monardella	Mixed Conifer Forest	G2
<i>Streptanthus fenestratus</i>	Tehipite Valley Jewelflower	Mixed Conifer Forest	G2
<i>Allium tribracteatum</i>	Three-bract Onion	Mixed Conifer Forest	G2
<i>Githopsis tenella</i>	Tube-flower Bluecup	Mixed Conifer Forest	G2
<i>Cryptantha incana</i>	Tulare Cryptantha	Mixed Conifer Forest	G2
<i>Erythronium tuolumnense</i>	Tuolumne Fawnlily	Mixed Conifer Forest	G2
<i>Eriogonum twisselmannii</i>	Twisselmann's Buckwheat	Mixed Conifer Forest	G2
<i>Lewisia disepala</i>	Yosemite Lewisia	Mixed Conifer Forest	G2
<i>Eriophyllum nubigenum</i>	Yosemite Woolly-sunflower	Mixed Conifer Forest	G2
<i>Erythranthe marmorata</i>		Mixed Conifer Forest	G2
<i>Cryptochia denningi</i>	Denning's Cryptic Caddisfly	Riparian/Streams	G1
<i>Orobittacus obscurus</i>	Gold Rush Hanging Fly	Riparian/Streams	G1
<i>Neothremma genella</i>	Golden-horned Caddisfly	Riparian/Streams	G1
<i>Helisoma newberryi</i>	Great Basin Ramshorn	Riparian/Streams	G1
<i>Pyrgulopsis greggi</i>	Kern River Pyrg	Riparian/Streams	G1
<i>Cryptochia excella</i>	Kings Canyon Cryptochian Caddisfly	Riparian/Streams	G1
<i>Batrachoseps relictus</i>	Relictual Slender Salamander	Riparian/Streams	G1
<i>Plebulina emigdionis</i>	San Emigdio Blue	Riparian/Streams	G1
<i>Tetrix sierrana</i>	Sierra Pygmy Grasshopper	Riparian/Streams	G1
<i>Hydroporus simplex</i>	Simple Hydroporus Diving Beetle	Riparian/Streams	G1
<i>Nebria darlingtoni</i>	South Forks Ground Beetle	Riparian/Streams	G1
<i>Rana muscosa</i>	Southern Mountain Yellow-legged Frog	Riparian/Streams	G1
<i>Rhyacophila spinata</i>	Spiny Rhyacophilan Caddisfly	Riparian/Streams	G1
<i>Rorippa subumbellata</i>	Tahoe Yellowcress	Riparian/Streams	G1
<i>Carpenteria californica</i>	Tree Anemone	Riparian/Streams	G1
<i>Monadenia tuolumneana</i>	Tuolumne Sideband	Riparian/Streams	G1
<i>Desmona bethula</i>	Amphibious Caddisfly	Riparian/Streams	G2
<i>Rana draytonii</i>	California Red-legged Frog	Riparian/Streams	G2
<i>Cosumnoperla hypocrena</i>	Cosumnes Stripetail	Riparian/Streams	G2

All management recommendations assume that operators and land managers are following all applicable BMPs, laws, and regulations.

CALIFORNIA SIERRA NEVADA ECOREGION

G1 and G2 Species Habitat Management Guidelines



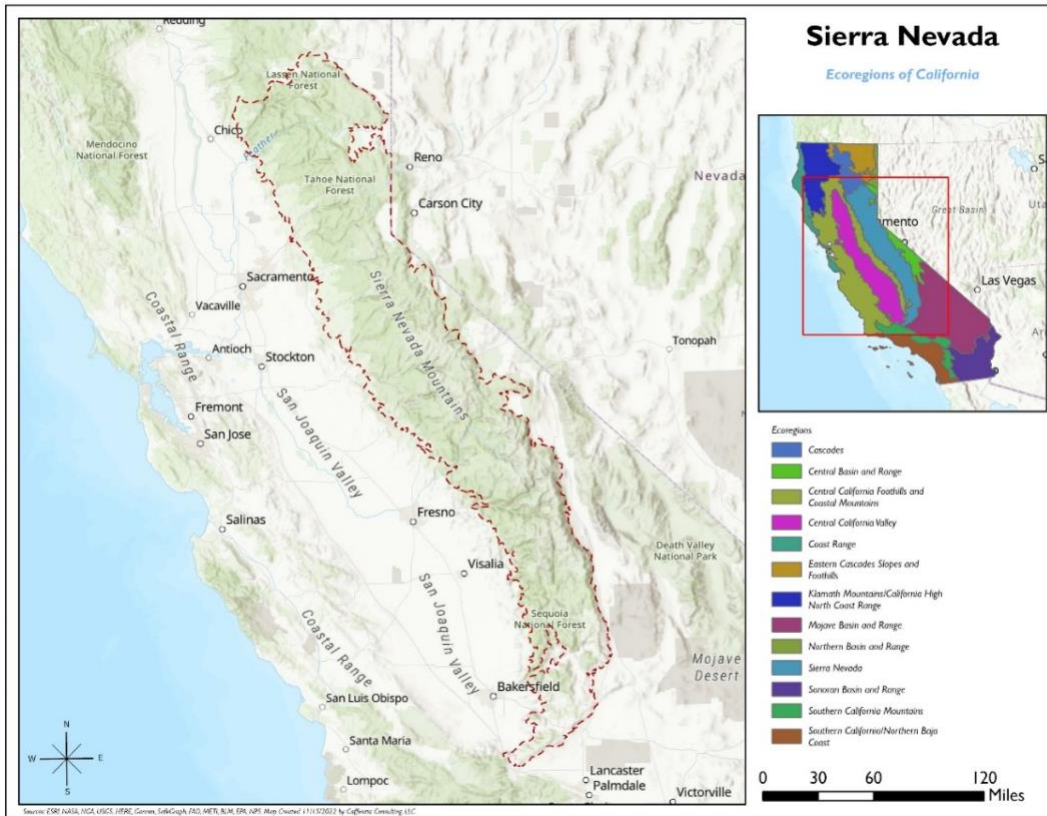
SCIENTIFIC NAME	COMMON NAME	HABITAT	STATUS
<i>Erythranthe filicifolia</i>	Fern-leaved Monkeyflower	Riparian/Streams	G2
<i>Collomia rawsoniana</i>	Flaming Trumpet	Riparian/Streams	G2
<i>Batrachoseps simatus</i>	Kern Canyon Slender Salamander	Riparian/Streams	G2
<i>Erigeron multiceps</i>	Kern River Fleabane	Riparian/Streams	G2
<i>Ecclisomyia bilera</i>	King's Creek Ecclisomyian Caddisfly	Riparian/Streams	G2
<i>Batrachoseps regius</i>	Kings River Slender Salamander	Riparian/Streams	G2
<i>Hydromantes brunus</i>	Limestone Salamander	Riparian/Streams	G2
<i>Ivesia sericoleuca</i>	Plumas Ivesia	Riparian/Streams	G2
<i>Rana sierrae</i>	Sierra Nevada Yellow-legged Frog	Riparian/Streams	G2
<i>Charina umbratica</i>	Southern Rubber Boa	Riparian/Streams	G2
<i>Batrachoseps stebbinsi</i>	Tehachapi Slender Salamander	Riparian/Streams	G2
<i>Eryngium pinnatisectum</i>	Tuolumne Coyote-thistle	Riparian/Streams	G2
<i>Pyrgulopsis wongi</i>	Wong's Springsnail	Riparian/Streams	G2
<i>Anaxyrus canorus</i>	Yosemite Toad	Riparian/Streams	G2
<i>Calystegia stebbinsii</i>	Stebbins' Morning-glory	Shrubland/Chaparral	G1
<i>Eriogonum callistum</i>	Tehachapi Buckwheat	Shrubland/Chaparral	G1
<i>Crocانthemum suffrutescens</i>	Bisbee Peak Rushrose	Shrubland/Chaparral	G2
<i>Penstemon personatus</i>	Closed-throated Beardtongue	Shrubland/Chaparral	G2
<i>Eriophyllum congdonii</i>	Congdon's Woolly-sunflower	Shrubland/Chaparral	G2
<i>Fritillaria brandegeei</i>	Greenhorn Fritillary	Shrubland/Chaparral	G2
<i>Mimulus norrisii</i>	Kaweah Monkeyflower	Shrubland/Chaparral	G2
<i>Packera layneae</i>	Layne's Butterweed	Shrubland/Chaparral	G2
<i>Lupinus duranii</i>	Mono Lake Lupine	Shrubland/Chaparral	G2
<i>Mimulus gracilipes</i>	Slenderstalk Monkeyflower	Shrubland/Chaparral	G2
<i>Calystegia vanzuukiae</i>	Van Zuuk's False Bindweed	Shrubland/Chaparral	G2
<i>Ivesia webberi</i>	Webber Ivesia	Shrubland/Chaparral	G2
<i>Stygobromus sheldoni</i>	Sheldon Stygobromid	Springs	G1
<i>Stygobromus sierrensis</i>	Sierra Amphipod	Springs	G1
<i>Agrostis hendersonii</i>	Henderson's Bentgrass	Temporary Pools	G2
<i>Mimulus pulchellus</i>	Pansy Monkeyflower	Temporary Pools	G2
<i>Eryngium spinosepalum</i>	Spiny Sepaled Coyote-thistle	Temporary Pools	G2
<i>Juncus digitatus</i>	Finger Rush	Wetland	G1
<i>Sidalcea stipularis</i>	Scadden Flat Checkerbloom	Wetland	G1
<i>Carex tiogana</i>	Tioga Pass Sedge	Wetland	G1
<i>Cinna bolanderi</i>	Bolander's Woodreed	Wetland	G2

*Species links provided when available

All management recommendations assume that operators and land managers are following all applicable BMPs, laws, and regulations.

CALIFORNIA SIERRA NEVADA ECOREGION

G1 and G2 Species Habitat Management Guidelines



All management recommendations assume that operators and land managers are following all applicable BMPs, laws, and regulations.