

OREGON WEST CASCADES ECOREGION

G1 and G2 Species Habitat Management Guidelines



INTRODUCTION

The Sustainable Forestry Initiative® (SFI) [2022 Standards](#) include requirements that promote and conserve Forests with Exceptional Conservation Value (FECV), which includes critically imperiled (G1) and imperiled (G2) species. This fact sheet summarizes the analysis of FECV habitat within this ecoregion and provides habitat management recommendations that would benefit species potentially found here.

HABITAT TYPES

- Alpine Forest
- Forest Edge
- Mixed Conifer Forest
- Oak Woodlands
- River/Riparian
- Rocky Outcropping

MIXED CONIFER FOREST MANAGEMENT

- Protect known locations
- Retain legacy trees, stumps, and logs
- Retain large diameter trees with cavities or broken tops
- Leave skips and gaps with dense shrub component
- Retain large slash into piles

OAK WOODLANDS MANAGEMENT

- Protect known locations
- Retain oak woodland habitat

RIVER/RIPARIAN MANAGEMENT

- Protect known locations
- Maintain well vegetated riparian buffers
- Plant a diversity of both hardwood and conifer trees in the riparian zone
- Retain large diameter trees near streams and rivers
- Buffer wetlands, springs, and headwater areas

SPECIAL SITE (ROCKY OUTCROPPING, FOREST EDGE, ALPINE FOREST) MANAGEMENT

- Protect known locations
- Buffer special sites
- Provide forage species for pollinators



Franklin's bumblebee



Kincaid's lupine



California condor

All management recommendations assume that operators and land managers are following all applicable BMPs, laws, and regulations.

OREGON WEST CASCADES ECOREGION

G1 and G2 Species Habitat Management Guidelines



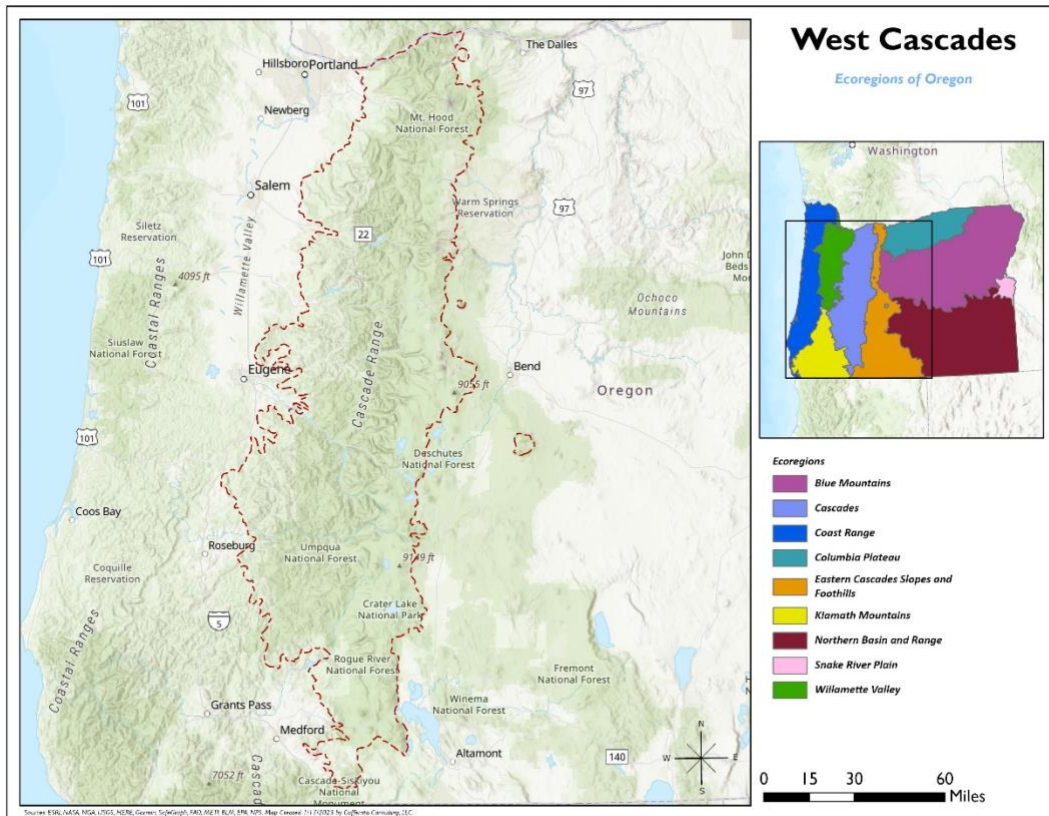
SCIENTIFIC NAME	COMMON NAME	HABITAT	Status
<i>Bombus franklini</i>	Franklin's bumblebee	Alpine Forest	G1
<i>Perideridia erythrorhiza</i>	Red-root yampah	Forest Edge	G2
<i>Gymnogyps californianus</i>	California condor	Mixed Conifer Forest	G1
<i>Boechera horizontalis</i>	Crater Lake rockcress	Mixed Conifer Forest	G1
<i>Fritillaria gentneri</i>	Gentner's fritillaria	Mixed Conifer Forest	G2
<i>Lupinus oregonus</i>	Kincaid's lupine	Mixed Conifer Forest	G2
<i>Polites mardon</i>	Mardon skipper (butterfly)	Mixed Conifer Forest	G2
<i>Kalmiopsis fragrans</i>	North Umpqua kalmiopsis	Mixed Conifer Forest	G2
<i>Sisyrinchium sarmentosum</i>	Pale blue-eyed grass	Mixed Conifer Forest	G2
<i>Cryptomastix devia</i>	Puget oregonian (snail)	Mixed Conifer Forest	G2
<i>Ribes erythrocarpum</i>	Crater Lake Currant	Mixed Conifer Forest	G2
<i>Prophysaon sp. 1</i>	Klamath tail-dropper (slug)	Mixed Conifer Forest	G2Q
<i>Helminthoglypta hertleini</i>	Oregon shoulderband (snail)	Mixed Conifer Forest	G2Q
<i>Delphinium pavonaceum</i>	Peacock larkspur	Oak Woodlands	G1Q
<i>Neothremma prolata</i>	A Caddisfly	River/Riparian	G1
<i>Juga newberryi</i>	A freshwater snail	River/Riparian	G1
<i>Juga hemphilli</i>	Barren juga	River/Riparian	G1
<i>Isoperla umpqua</i>	Muir Creek stonefly	River/Riparian	G1
<i>Fluminicola sp. 21</i>	Pinhead pebblesnail	River/Riparian	G1
<i>Allomyia scotti</i>	Scott's apatanian caddisfly	River/Riparian	G1
<i>Fluminicola sp. 15</i>	Tiger lily pebblesnail	River/Riparian	G1
<i>Nanonemoura wahkeena</i>	Wahkeena Falls flightless stonefly	River/Riparian	G1
<i>Farula constricta</i>	A caddisfly	River/Riparian	G1G2
<i>Juga sp. 3</i>	Brown juga (snail)	River/Riparian	G1Q
<i>Physella hordacea</i>	Grain physa (snail)	River/Riparian	G1Q
<i>Vorticifex neritoides</i>	Nerite ramshorn (snail)	River/Riparian	G1Q
<i>Neothremma andersoni</i>	Columbia Gorge caddisfly	River/Riparian	G2
<i>Fluminicola fuscus</i>	Columbia pebblesnail	River/Riparian	G2
<i>Agrostis howellii</i>	Howell's bentgrass	River/Riparian	G2
<i>Rivulariella gemmipara</i>	Liverwort	River/Riparian	G2
<i>Rana pretiosa</i>	Oregon spotted frog	River/Riparian	G2
<i>Fluminicola multifarius</i>	Shasta pebblesnail	River/Riparian	G2
<i>Meconella oregana</i>	White meconella	River/Riparian	G2
<i>Anastrophyllum sphenoloboides</i>	Liverwort	River/Riparian	G2
<i>Lathyrus holochlorus</i>	Thin-leaved peavine	River/Riparian	G2
<i>Cryptomastix hendersoni</i>	Columbia Gorge oregonian (snail)	River/Riparian	G2Q
<i>Eriogonum villosissimum</i>	Acker Rock wild buckwheat	Rocky Outcropping	G1
<i>Erigeron howellii</i>	Howell's daisy	Rocky Outcropping	G2
<i>Sullivantia oregana</i>	Oregon sullivantia	Rocky Outcropping	G2

*Species links provided when available

All management recommendations assume that operators and land managers are following all applicable BMPs, laws, and regulations.

OREGON WEST CASCADES ECOREGION

G1 and G2 Species Habitat Management Guidelines



All management recommendations assume that operators and land managers are following all applicable BMPs, laws, and regulations.