

## New species in the genus *Muelleria* (Bacillariophyta) from the Maritime Antarctic Region

Bart VAN DE VIJVER<sup>1,2</sup>, Ralitsa ZIDAROVA<sup>3</sup> & Kateřina KOPALOVÁ<sup>4</sup>

<sup>1</sup> Botanic Garden Meise, Department of Bryophyta & Thallophtya, Domein van Bouchout, B–1860 Meise, Belgium; \*Corresponding author e–mail: vandevijver@br.fgov.be

<sup>2</sup> University of Antwerp, Department of Biology, ECOBE, Universiteitsplein 1, B–2610 Wilrijk, Belgium

<sup>3</sup> Department of Botany, Faculty of Biology, St. "Kliment Ohridski" University of Sofia, 8 Dragan Tzankov Blvd., Sofia 1164, Bulgaria

<sup>4</sup> Department of Ecology, Faculty of Science, Charles University in Prague, Viničná 7, CZ–128 44 Prague 2, Czech Republic

**Abstract:** During a survey of the freshwater aquatic and limno–terrestrial diatom flora of the Maritime Antarctic Region, six taxa belonging to the genus *Muelleria* that could not be identified were observed. Based on detailed LM and SEM observations, these six taxa have been described as new taxa: *Muelleria desseiniana* sp. nov., *M. levkoviana* sp. nov., *M. nogae* sp. nov., *M. spauldingiana* sp. nov., *M. subsabbei* sp. nov. and *M. undulatooides* sp. nov. Comments are made on their taxonomic position and how they can be distinguished from other species in this genus. Brief notes on the ecology and distribution of the six taxa are added. A compiled list of all *Muelleria* taxa described worldwide is included in this paper.

**Key words:** Antarctic Region, morphology, *Muelleria*, new species, taxonomy

### INTRODUCTION

The genus *Muelleria* is one of the most species rich genera in the Antarctic Region despite its rather low total number of described species (SPAULDING et al. 1999; VAN DE VIJVER et al. 2010). Up to now, only 29 taxa are recognized worldwide of which 16 have a distribution restricted to the Antarctic Region. Table 1 summarizes all collated published taxonomic information on all *Muelleria* species described so far worldwide. Together with the genera *Diademesmis*, *Luticola* and *Hantzschia*, the genus is one of the major constituents of the terrestrial (soil) diatom flora, although populations rarely reach high abundances (FERMANI et al. 2007; KOPALOVÁ & VAN DE VIJVER 2013). VAN DE VIJVER et al. (2010) elaborately discuss the success of the genus *Muelleria* in the Antarctic Region which may be due to several factors such as their strong preference for wet or semidry terrestrial habitats which are abundantly present in this region. But it is also likely that a comparable diversity within this genus could be found in the Arctic Region and the low number of recorded taxa from the Arctic could be the result of undersampling and/or force–fitting.

*Muelleria* taxa are easily recognizable in light microscope (LM) based on the presence of longitudinal ribs bordering the axial area, typically (strongly) deflected to even hooked proximal raphe endings and central striae that are usually more distant than

the other striae in most species. Confusion with other taxa is only possible with certain species of the genus *Neidium* but the latter is very rare in the Antarctic Region (HAMILTON et al. 2013).

The highest *Muelleria* diversity seems to be concentrated on the South Orkney (SOI) and South Shetland (SSI) Islands. SPAULDING et al. (1999) and VAN DE VIJVER et al. (2010) described nine new taxa from Signy Island (SOI), Deception Island (SSI) and King George Island (SSI). During an ongoing revision of the Antarctic diatom flora of some islands in the Maritime Antarctic Region, several very small populations of *Muelleria* taxa were found on Livingston Island (SSI) and James Ross Island. Based on LM and SEM analysis of their structure, six of these taxa could not be identified using the currently available literature and are described here as new species. The relationship of the new taxa in comparison with other *Muelleria* taxa from the Antarctic Region and notes on their ecological preferences are presented.

### MATERIALS AND METHODS

Epilithic, sediment and moss samples were collected from various terrestrial and freshwater habitats in the following islands in the southern Atlantic Ocean: Livingston Island (South Shetland Islands) and James Ross Island (Table 1). Samples were fixed in the field with 3% formaldehyde. More information on sampling methods and physico–chemical

Table 1. List of samples and their characteristics used in this paper.

Sample	Collection date	Locality	GPS coordinates	Short description
JRI-S1J	22/02/2007	Komárek's slopes below Berry Hill, Ulu Peninsula, James Ross Island	(not determined)	seepage area
5-1/05	08/01/2005	Hurd Peninsula, Livingston Island, South Shetland Island	(not determined)	wet terrestrial mosses on the edge of a pool
BYM008	9/01/2009	Byers Peninsula, Livingston Island (South Shetland Islands, large plain near large penguin rookery)	(not determined)	wet, terrestrial mosses on edge of large lake
BY052	15/01/2009	Byers Peninsula, Livingston Island (South Shetland Islands, between Midge & Linnopolar Lake)	62°38'20.1"S 61°06'44.2"W	large lake with algal mats and fine sediment/sand on bottom
LIV-BY16A	16/12/2006	Byers Peninsula, Livingston Island (South Shetland Islands, close to the main plateau)	62°40'11.3"S 61°08'45.3"W	biofilm in a flooded area between stones
LIV-BY16C	16/12/2006	Byers Peninsula, Livingston Island (South Shetland Islands, close to the main plateau)	62°40'11.3"S 61°08'45.3"W	biofilm in a flooded area between stones

analyses can be found in KOPALOVÁ & VAN DE VIJVER (2013) and KOPALOVÁ et al. (2013).

For light microscope (LM) observations, diatom samples were prepared following the method described in VAN DER WERFF (1955). In total, 6 sample sites and microhabitats were examined in this study, with all samples listed in Table 2. Subsamples of the original material were oxidized using 37% H<sub>2</sub>O<sub>2</sub> and heating to 80 °C for about 1 h. The reaction was further completed by the addition of saturated KMnO<sub>4</sub>. Following digestion and centrifugation (three times 10 min at 3700×g), the material, free of organic matter, was further diluted with distilled water for sample mounting to avoid excessive concentrations of diatom valves on the slides. A subsample from the organic-free material was mounted in Naphrax®. The slides were analyzed using an Olympus BX51 microscope, equipped with differential interference contrast (DIC) optics (Nomarski) and Colorview I Soft Imaging System. Observations on *Muelleria levkoviana* sp. nov. were made using brightfield optics as images in DIC produced only overexposed images. Diatom samples and slides are stored at BR (National Botanic Garden of Belgium). For scanning electron microscopy (SEM), aliquots of the oxidized suspensions were filtered through 1-µm pore size polycarbonate filters which were cut in small pieces, fixed on aluminum stubs after air-drying and sputter coated (Cressington 208HR, Watford, UK) with Au (10 nm). Observations and photomicrographs were performed with

a Zeiss® Ultra plus SEM at 8 kV at the Natural History Museum (London, UK). The number of observations is quite low but can be explained by the very rare occurrence of *Muelleria* taxa in the different samples as was indicated previously in VAN DE VIJVER et al. (2010).

Identifications and species determinations are based primarily on SPAULDING & STOERMER (1997), SPAULDING et al. (1999), ESPOSITO et al. (2008) and VAN DE VIJVER et al. (2010). Terminology follows mostly VAN DE VIJVER et al. (2010) except for valve outline terminology that is based on HENDEY (1964) and raphe morphology that follows ROUND et al. (1990).

A compiled list of all *Muelleria* taxa known to date with references to their original description, type locality and presence in Antarctica is done (Table 2).

## RESULTS AND DISCUSSION

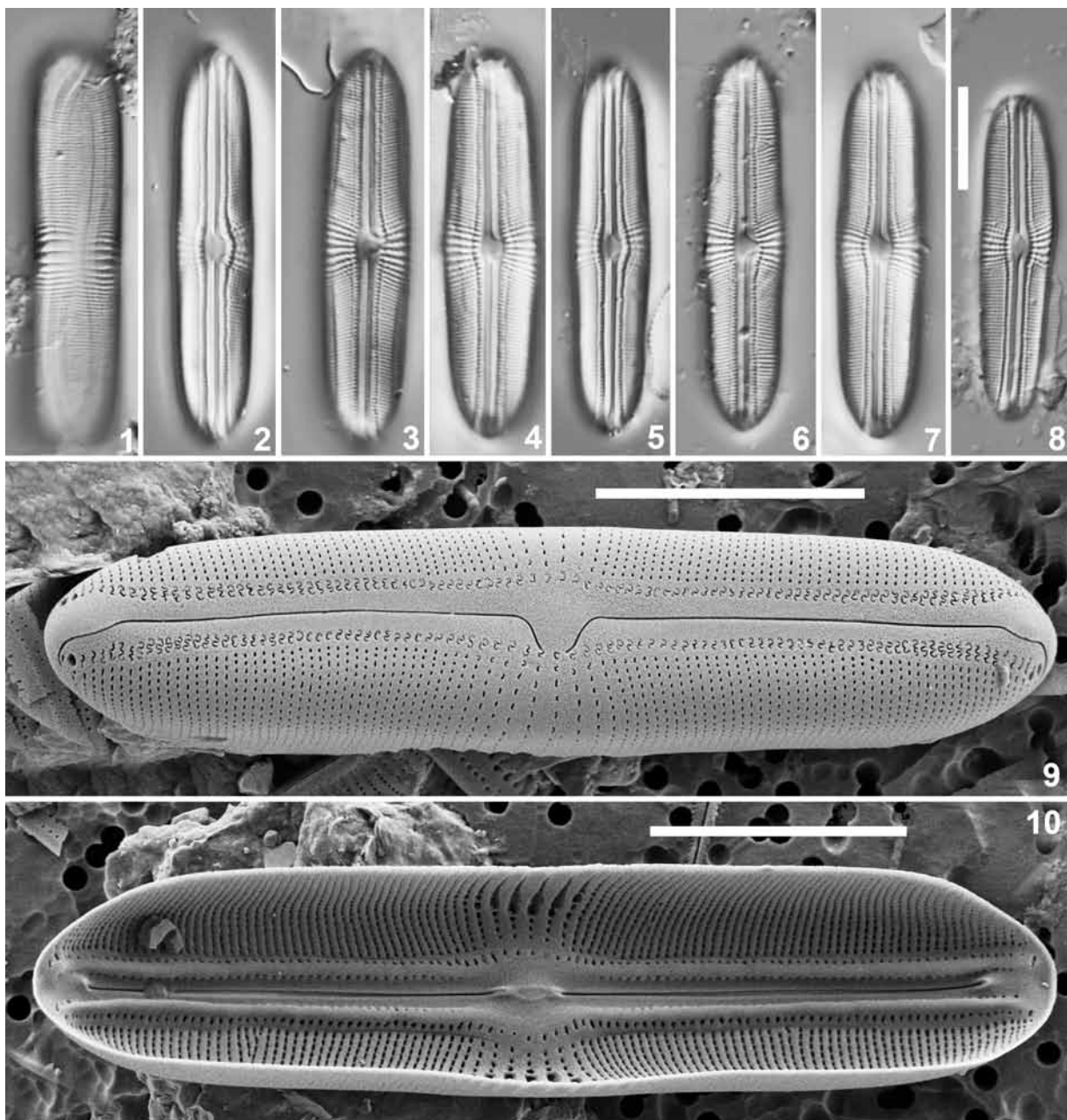
A total of fourteen *Muelleria* taxa has been found in the samples. Eight of them had been previously described (SPAULDING et al. 1999; VAN DE VIJVER et al. 2010): *M. aequistriata* VAN DE VIJVER et S.A.SPAULDING, *M. algida* S.A.SPAULDING et KOCIOLEK, *M. kristinae* VAN DE VIJVER, *M. regigeorgiensis* VAN DE VIJVER et S.A.SPAULDING, *M.*

*rostrata* VAN DE VIJVER & S.A.SPAULDING, *M. sabbei* VAN DE VIJVER et S.A.SPAULDING, *M. tumida* VAN DE VIJVER et S.A.SPAULDING and *M. variolata* S.A.SPAULDING et KOCIOLEK. Six taxa could not be identified using the currently available literature. All taxa were extremely rare in the samples making observations in LM and SEM quite difficult. Often only one (sometimes even damaged or broken) valve could be observed in SEM and internal views were very hard (and even impossible) to find. Nevertheless, a sufficient amount of observations, both in LM and SEM could be made to justify their description as new for science: *Muelleria desseini* sp. nov., *M. levkoviana* sp. nov., *M. nogae* sp. nov., *M. spauldingiana* sp. nov., *M. subsabbei* sp.

nov. and *M. undulatoides* sp.nov.

***Muelleria desseini* sp. nov. (Figs 1–10)**

**Light microscopy (Figs 1–8):** Frustules in girdle view rectangular (Fig. 1). Valves linear with gibbous central part and broadly rounded ends (Figs 2–8). Valve dimensions (n=10): length 32–40  $\mu\text{m}$ , valve width 8.5–10.0  $\mu\text{m}$ . Axial area rather narrow, linear, slightly widening near the small, elliptical central area. First row of areolae along the axial area separated from the remaining areolae by very narrow, but distinct hyaline line. Raphe filiform, straight with clearly unilaterally bent, long proximal raphe endings extending almost till



Figs 1–10. *Muelleria desseini*, type population from James Ross Island (sample JRI-S1J): (1–8) LM views; (9) SEM external view; (10) SEM internal view. Scale bar 10  $\mu\text{m}$ .

Table 2. Compiled information on the taxa belonging to the genus *Muelleria*.

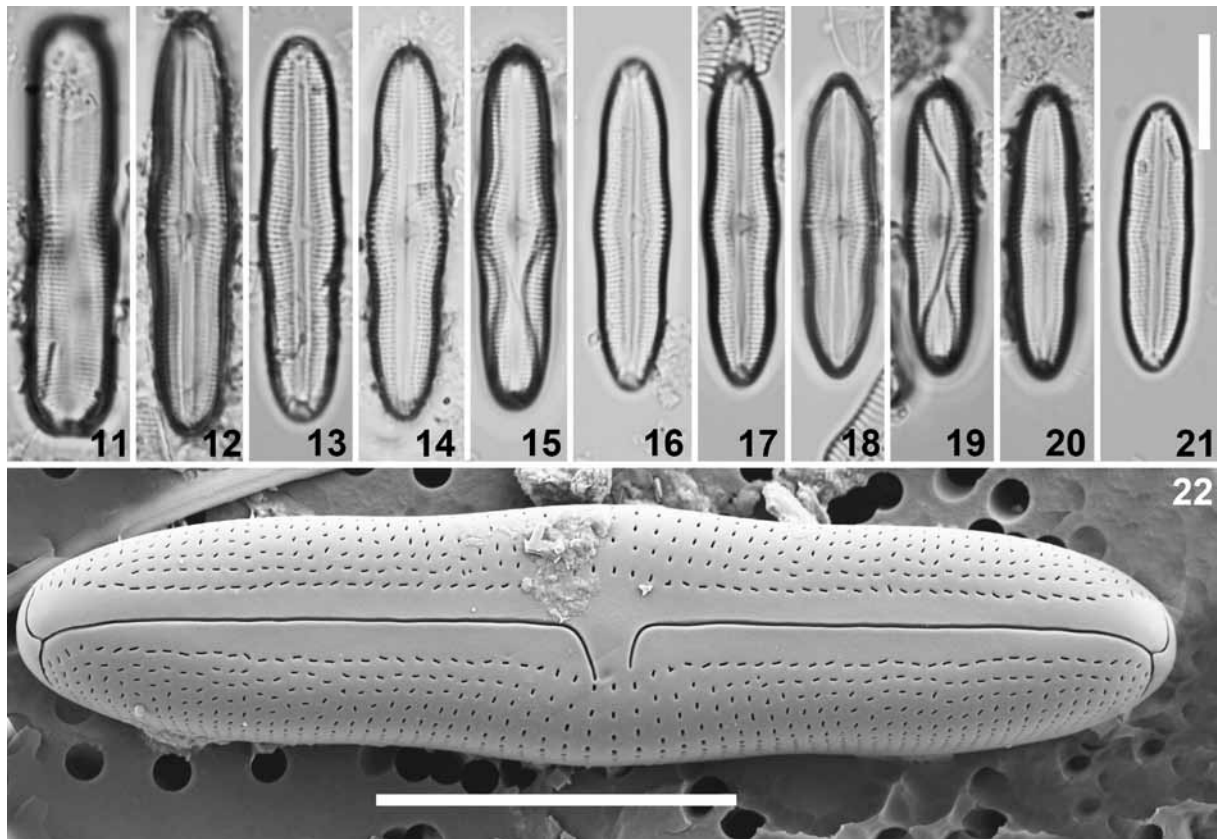
<b>Taxon</b>	<b>Basionym</b>	<b>Reference</b>	<b>Type locality</b>	<b>Antarctic Region</b>
<i>Muelleria aequistriata</i> VAN DE VIJVER et S.A.SPAULDING in VAN DE VIJVER et al. 2010	–	VAN DE VIJVER et al. 2010	Bellingshausen, King George Island, South Shetland Islands	X
<i>Muelleria algida</i> S.A.SPAULDING et KOCIOLEK in SPAULDING et al. 1999	–	SPAULDING et al. 1999	Bladder lake, Signy Island, South Orkney Islands	X
<i>Muelleria australoatlantica</i> VAN DE VIJVER et S.A.SPAULDING in VAN DE VIJVER et al. 2010	–	VAN DE VIJVER et al. 2010	near Fumarole Bay, Deception Island, South Shetland Islands	X
<i>Muelleria bachmannii</i> (HUSTEDT) S.A.SPAULDING et STOERMER 1997	<i>Navicula bachmannii</i> HUSTEDT 1961	HUSTEDT 1961, SPAULDING & STOERMER 1997, SPAULDING et al. 1999	Advent Bay, Bear Island, Spitsbergen	
<i>Muelleria cryonicola</i> STANISH et S.A.SPAULDING in VAN DE VIJVER et al. 2010	–	VAN DE VIJVER et al. 2010	Commonwealth Glacier, Taylor Valley, Antarctica	X
<i>Muelleria desseiniana</i> sp. nov.	–	this study	Ulu Peninsula, James Ross Island	X
<i>Muelleria dubitanda</i> (HUSTEDT et KOLBE) S.A.SPAULDING et STOERMER 1997	<i>Navicula dubitanda</i> HUSTEDT & KOLBE in HUSTEDT 1961	HUSTEDT 1961, SPAULDING & STOERMER 1997, SPAULDING et al. 1999	Ale, Norrbottens, Sweden	
<i>Muelleria gibbula</i> (CLEVE) S.A.SPAULDING et STOERMER 1997	<i>Navicula gibbula</i> CLEVE 1894	CLEVE 1894, SPAULDING & STOERMER 1997, SPAULDING et al. 1999	Spitsbergen	
<i>Muelleria holmenii</i> (FOGED) S.A.SPAULDING et KOCIOLEK in SPAULDING et al. 1999	<i>Navicula holmenii</i> FOGED 1955	Foged 1955, SPAULDING et al. 1999	Pearyland, Greenland	
<i>Muelleria islandica</i> (ØSTRUP) H. LANGE–BERTALOT in LANGE–BERTALOT & GENKAL 1999	<i>Navicula islandica</i> ØSTRUP 1910	ØSTRUP 1910, LANGE–BERTALOT & GENKAL 1999	Iceland	
<i>Muelleria kristinae</i> VAN DE VIJVER in VAN DE VIJVER et al. 2010	–	VAN DE VIJVER et al. 2010	near Irizar lake, Deception Island, South Shetland Islands	X

Table 2 Cont.

<b>Taxon</b>	<b>Basionym</b>	<b>Reference</b>	<b>Type locality</b>	<b>Antarctic Region</b>
<i>Muelleria linearis</i> (O.MÜLLER) FRENGUELLI 1945	<i>Diploneis linearis</i> O.MÜLLER 1909	MÜLLER 1909, FRENGUELLI 1945, SPAULDING et al. 1999	1945, Kark, South Patagonia	
<i>Muelleria levkoviana</i> sp. nov.	–	this study		X
<i>Muelleria lototskaya</i> VAN DE VIJVER in VAN DE VIJVER et al. 2010	–	VAN DE VIJVER et al. 2010	Crater southwest of Corinth Head, Heard Island	X
<i>Muelleria luculentata</i> S.A.SPAULDING & STOERMER 1997	–	SPAULDING et al. 1999	Lake Marie–Nicole, Iles Kerguelen	X
<i>Muelleria meridionalis</i> S.A.SPAULDING & STOERMER 1997	–	SPAULDING & STOERMER 1997	Lake Hoare, Taylor valley, Antarctica	X
<i>Muelleria nogae</i> sp. nov.	–	this study		X
<i>Muelleria patagonica</i> (O.MÜLLER) FRENGUELLI 1945	<i>Diploneis patagonica</i> O.MÜLLER 1909	MÜLLER 1909, FRENGUELLI 1945, SPAULDING et al. 1999	Lago Moor Fontana, Chubut Province, Argentina	
<i>Muelleria peraustralis</i> (W.&G.S.WEST) S.A.SPAULDING & STOERMER 1997	<i>Navicula peraustralis</i> W.&G.S.WEST 1911	WEST & WEST 1911, SPAULDING & STOERMER 1997, SPAULDING et al. 1999, VAN DE VIJVER et al. 2012	Lake Deposit, Cape Royds, Ross Island, Antarctica	X
<i>Muelleria portomontana</i> (CLEVE) FRENGUELLI 1945	<i>Navicula portomontana</i> CLEVE 1894	CLEVE 1894, FRENGUELLI 1945, SPAULDING et al. 1999	Puerto Montt, Chile	
<i>Muelleria regigeorgiensis</i> VAN DE VIJVER et S.A.SPAULDING in VAN DE VIJVER et al. 2010	–	VAN DE VIJVER et al. 2010	Bellingshausen, King George Island, South Shetland Islands	X
<i>Muelleria relicta</i> (McCALL) REICHARDT 2004	<i>Navicula relicta</i> McCALL 1933	McCALL 1933, REICHARDT 2004	Invergowie House, Tay District, Scotland	
<i>Muelleria rostrata</i> VAN DE VIJVER et S.A.SPAULDING in VAN DE VIJVER et al. 2010	–	VAN DE VIJVER et al. 2010	near Crater lake, Deception Island, South Shetland Islands	X
<i>Muelleria sabbei</i> VAN DE VIJVER et S.A.SPAULDING in VAN DE VIJVER et al. 2010	–	VAN DE VIJVER et al. 2010	Bellingshausen, King George Island, South Shetland Islands	X

Table 2 Cont.

Taxon	Basionym	Reference	Type locality	Antarctic Region
<i>Muelleria spauldingiana</i> sp. nov.	–	this study		X
<i>Muelleria splendida</i> (HUSTEDT & KRASSKE) S.A.SPAULDING & STOERMER 1997	<i>Navicula splendida</i> HUSTEDT & KRASSKE in KRASSKE 1949	KRASSKE 1949, SPAULDING & STOERMER 1997, SPAULDING et al. 1999	Lago Moor Fontana, Chubut Province, Argentina	
<i>Muelleria subsabbei</i> sp. nov.	–	this study		X
<i>Muelleria supra</i> S.A.SPAULDING et ESPOSITO in ESPOSITO et al. 2008	–	ESPOSITO et al. 2008	Canada Stream, Taylor valley, Antarctica	X
<i>Muelleria taylorii</i> VAN DE VIJVER et COCQUYT in VAN DE VIJVER et al. 2010	–	VAN DE VIJVER et al. 2010	Sentinel Peak Hiking Trail, Drakensburg, Freestate province, South Africa	X
<i>Muelleria terrestris</i> (PETERSEN) S.A.SPAULDING & STOERMER 1997	<i>Navicula terrestris</i> PETERSEN 1915	PETERSEN 1915, SPAULDING & STOERMER 1997, SPAULDING et al. 1999	Garden soil, Copenhagen Botanical garden, Denmark	
<i>Muelleria tumida</i> VAN DE VIJVER et S.A.SPAULDING in VAN DE VIJVER et al. 2010	–	VAN DE VIJVER et al. 2010	Bellingshausen, King George Island, South Shetland Islands	X
<i>Muelleria undulatooides</i> sp. nov.	–	this study		X
<i>Muelleria vandermerwei</i> (CHOLNOKY) VAN DE VIJVER et COCQUYT in VAN DE VIJVER et al. 2010	<i>Diploneis vandermerwei</i> Cholnoky 1955	CHOLNOKY 1955, VAN DE VIJVER et al. 2010	Eastern Transvaal, South Africa	X
<i>Muelleria variolata</i> S.A.SPAULDING et KOCIOLEK in SPAULDING et al. 1999	–	SPAULDING et al. 1999	Bladder lake, Signy Island, South Orkney Islands	X
<i>Muelleria varipunctata</i> S.A.SPAULDING et KOCIOLEK in SPAULDING et al. 1999	–	SPAULDING et al. 1999	Lake Marie–Nicole, Iles Kerguelen	X



Figs 11–22. *Muelleria levkoviana*, type population from Livingston Island (sample BYM008): (11–21) LM views; (22) SEM external view. Scale bar 10  $\mu\text{m}$ .

and even beyond the first row of areolae. Distal raphe endings are weakly deflected to the same side of the valve as the proximal raphe ends. Striae near the central area (6–9 striae) more spaced than the other striae and clearly radiate whereas other striae more distant from the central area only slightly radiate, becoming almost entirely parallel near the apices. Central striae 13–15 in 10  $\mu\text{m}$ , distal striae 27–29 in 10  $\mu\text{m}$ . Areolae hardly discernible in LM.

**Scanning electron microscopy (Figs 9–10):** Striae composed of usually transapically elongated, short, slitlike areolae. First row of areolae bordering the axial area however appearing as short wavy slits, separated from the rest of the striae by a narrow hyaline area and gradually becoming longer towards the apices (Fig. 9). Near the distal raphe ends, one or two large, rounded canal punctae present. Proximal raphe endings unilaterally bent, long, extending into the first row of areolae. Distal raphe endings deflected onto the valve mantle, not bifurcated (Fig. 9). Internally, clear but short rectelevatum present between proximal raphe endings. Longitudinal canals forming narrow ribs running from central area towards the apices, clearly perforated on both sides by first row of areolae (Fig. 10). Distal raphe endings terminating on short helictoglossae (Fig. 10).

**Holotype (designated here):** BR–4350 (National Botanic Garden, Meise, Belgium)

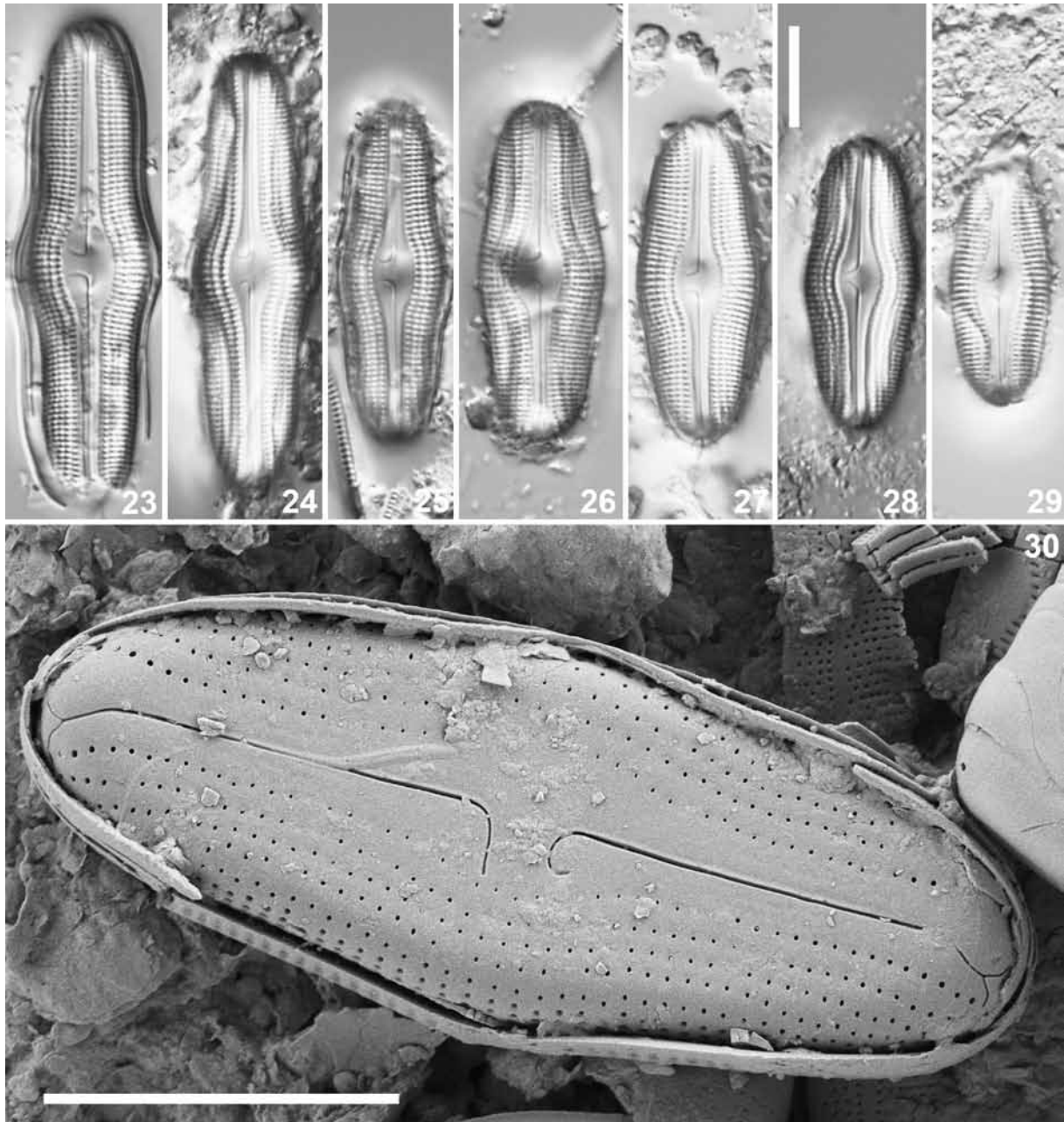
**Isotypes (designated here):** PLP–244 (University of Antwerp, Belgium), BRM–ZU9/37 (Hustedt Collection, Bremerhaven, Germany)

**Type locality:** Ulu Peninsula, James Ross Island, sample JRI–S1J (Leg. J. Komárek; coll. date 22/02/2007).

**Etymology:** The species is named after our colleague Dr. Steven Dessein, director of the National Botanic Garden of Belgium in recognition of his scientific achievements in botany.

**Ecology and distribution:** So far the species was only observed in very small numbers in samples obtained from Livingston Island (SSI) and James Ross Island. The largest population was found in one sample, collected from a seepage area near Berry Hill on Ulu Peninsula on James Ross Island. The sample was dominated by several *Luticola* and *Hantzschia* species clearly indicating its aerophilic nature. Due to confusion with other similar taxa such as *M. luculenta* (as it was earlier reported in Zidarova 2008, Pl. III, fig. 26) or the larger and coarser *M. algida*, its geographic distribution is still unclear but it is not excluded that the new species is more widespread on the Maritime Antarctic islands.

**Taxonomical remarks:** *Muelleria desseiniana* has a unique combination of features that separates it



Figs 23–30. *Muelleria nogae*, type population from Livingston Island (sample LIV–BY16A): (23–29) LM views; (30) SEM external view. Scale bar 10  $\mu\text{m}$ .

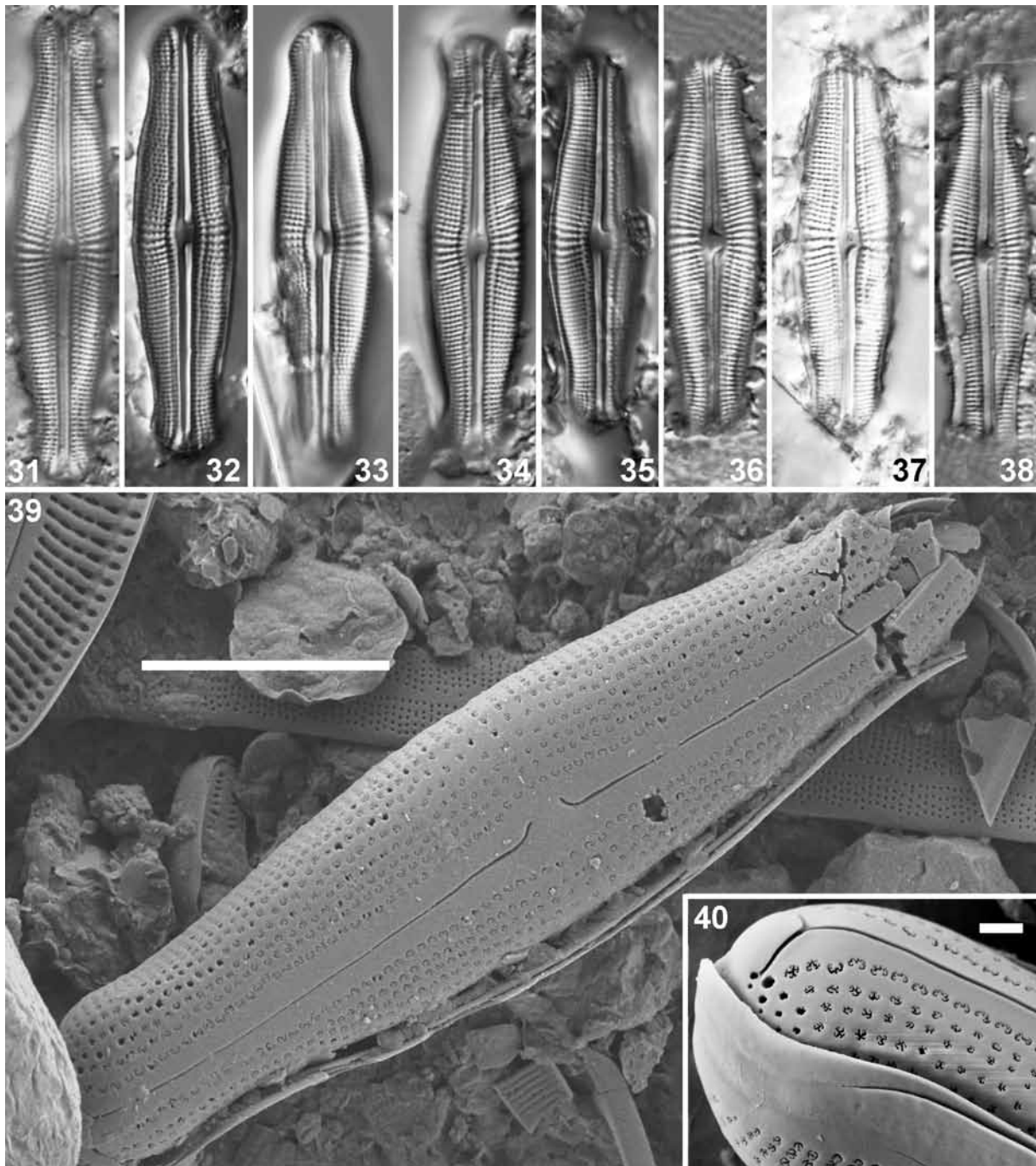
well from all other known *Muelleria* taxa. The raphe is not bifurcated in its distal part, a feature rarely seen within the genus *Muelleria*. *Muelleria sabbei* shows comparable, though shorter, raphe endings but has a clearly elliptic–lanceolate valve outline with broad, convex margins (VAN DE VIJVER et al. 2010). Additionally, the areolae bordering the central area are small and rounded whereas in *M. desseiniana*, the areolae form long wavy slits. *Muelleria varipunctata* S.A.SPAULDING et KOCIOLEK shows a similar valve outline but has a much coarser striation pattern, large round areolae near the axial area and different (=bifurcating) distal raphe endings. *Muelleria lototskayae* VAN DE VIJVER, *M. luculenta* and *M.*

*algida* are larger with longer valves and a different raphe course, usually showing a terminal bifurcation (SPAULDING et al. 1999; VAN DE VIJVER et al. 2010). All three taxa have small, rounded to short slitlike areolae, never showing the elongated, wavy areolae typical for *M. desseiniana*.

#### *Muelleria levkoviana* sp. nov. (Figs 11–22)

**Light microscopy (Figs 11–21):** Frustules in girdle view rectangular (Fig. 11). Valves linear with clearly undulating margins, a gibbous central part and cuneately rounded ends (Figs 12–21). Valve dimensions (n=15): length 24–38  $\mu\text{m}$ , valve width



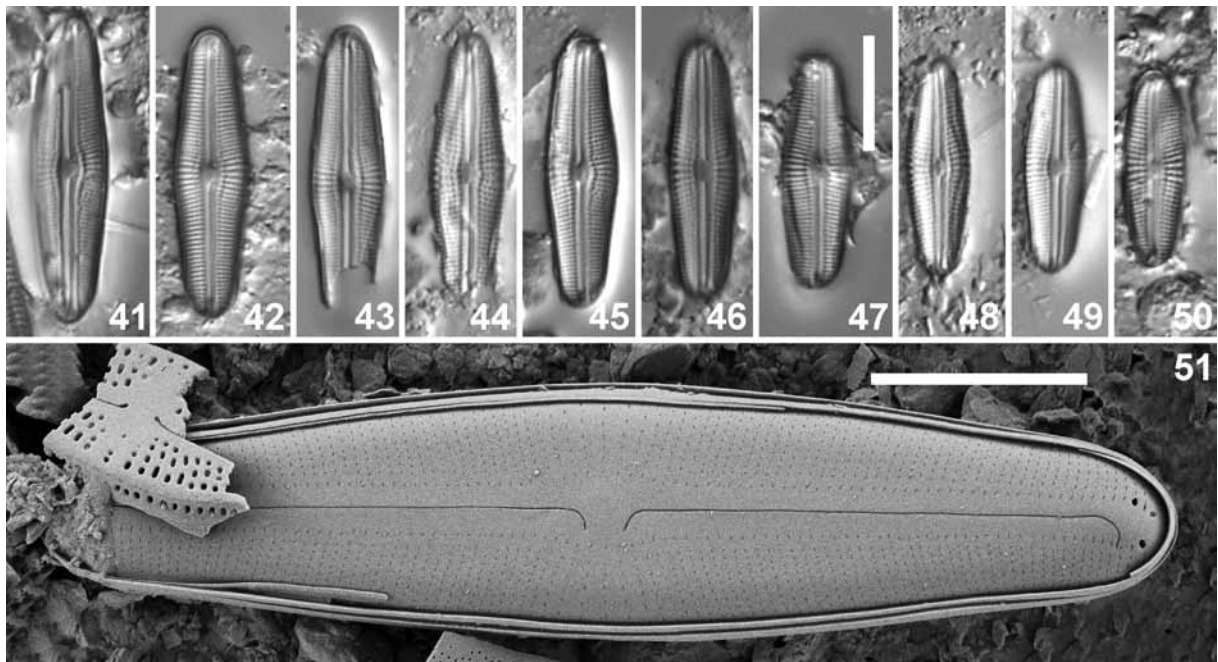


Figs 31–40. *Muelleria spauldingiana*, images from various population from Livingston Island: (31, 32, 36) are from the type population (sample BY052); (31–38) LM views; (39) SEM external view of an entire (broken) valve; (40) SEM external detail of the valve apex in girdle view showing distal raphe fissures, mantle areolae and canal puncta. Scale bar 10  $\mu\text{m}$  (39), 1  $\mu\text{m}$  (40).

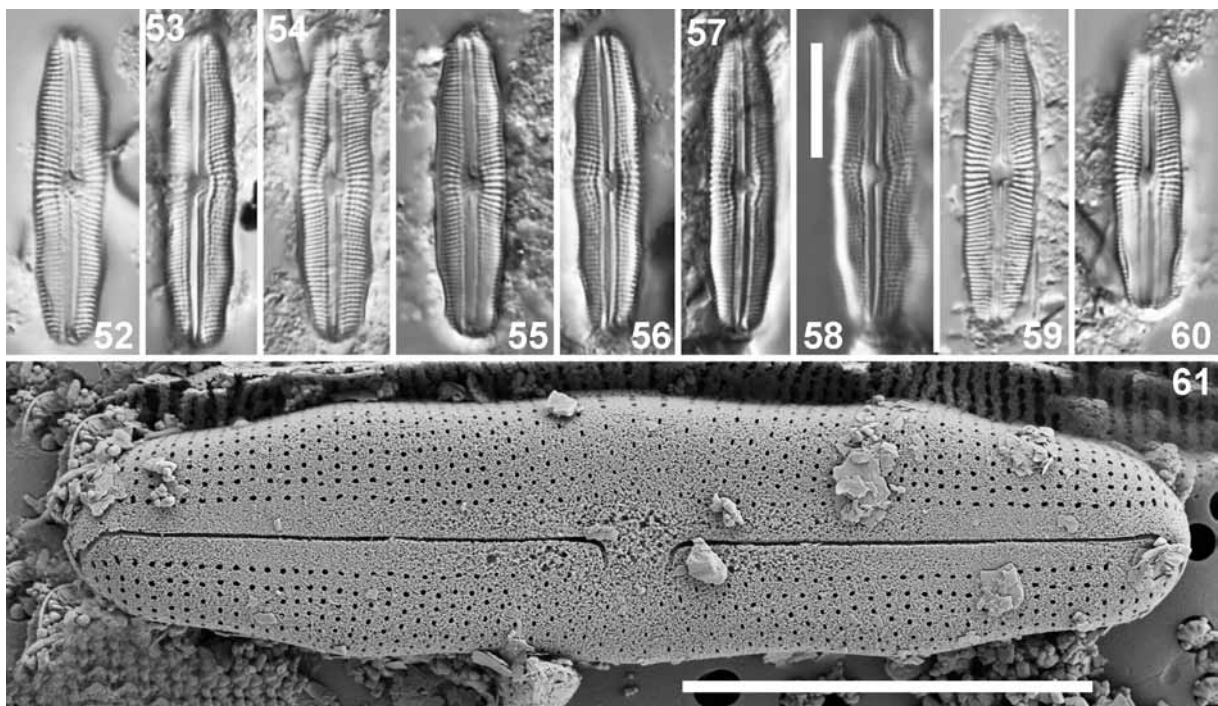
6.0–7.8  $\mu\text{m}$ . Axial area rather narrow, linear, widening near the small central area. First row of areolae not separated from the rest of the striae. Raphe filiform, straight with clearly unilaterally bent, long proximal raphe endings extending almost till and even beyond the first row of areolae. Distal raphe endings not well visible in LM, apparently deflected. Striae near the central area (5–7 striae) only slightly more spaced than the other striae and clearly radiate whereas other striae more distant from the central area only slightly radiate,

gradually becoming parallel near the apices. Central striae 16–18 in 10  $\mu\text{m}$ , distal striae 20–22 in 10  $\mu\text{m}$ . Areolae moderately discernible in LM.

**Scanning electron microscopy (Fig. 22):** Striae composed of two types of areolae: near the axial area usually 1–3 rows of apically elongated areolae, gradually becoming transapically elongated. Central striae composed of only transapically elongated areolae. Proximal raphe endings clearly bent, almost reaching each other at the end, extending till the first



Figs 41–51. *Muelleria subsabbei*, type population from Livingston Island (sample LIV–BY16C): (41–50) LM views; (51) SEM external view. Scale bar 10  $\mu$ m.



Figs 52–61. *Muelleria undulatoides*, type population from Livingston Island (sample 5–1/05): (52–60) LM views; (61) SEM external view. Scale bar 10  $\mu$ m.

row of areolae. Distal raphe endings deflected, clearly bifurcating due to siliceous flap. Canal puncta not observed. No observations of the valve interior could be made due to the rarity of the taxon.

**Holotype (designated here):** BR–4351 (National Botanic Garden, Meise, Belgium)

**Isotypes (designated here):** PLP–245 (University of Antwerp, Belgium), BRM–ZU9/38 (Hustedt Collection, Bremerhaven, Germany)

**Type locality:** Byers Peninsula, Livingston Island, South Shetland Islands, sample BYM008 (Leg. B. Van de Vijver; coll. date 09/01/2009).

**Etymology:** The species is named after our colleague

Dr. Zlatko Levkov (University of Skopje, Macedonia) in recognition of his important contributions in diatom research.

**Ecology and distribution:** *Muelleria levkoviana* was only found so far in small numbers in one moss sample on Byers Peninsula (Livingston Island). The mosses were sampled near the shore of a very large lake close to a large penguin rookery. Remains of penguins, such as feathers and partly decomposed body parts, were visible in and around the lake. The sample was dominated by *Chamaepinnularia australomediocris* (LANGE–BERTALOT et SCHMIDT) VAN DE VIJVER and various *Psammothidium* taxa such as *P. papilio* (KELLOGG et al.) KOPALOVÁ et VAN DE VIJVER, *P. germainii* (MANGUIN) SABBE and *P. incognitum* (KRASSKE) VAN DE VIJVER et BEYENS.

**Taxonomical remarks:** Despite the single SEM observation of the *M. levkoviana* so far, it is possible to justify its separation from all other *Muelleria* taxa known so far. Similar taxa include *M. terrestris* (PETERSEN) S.A.SPAULDING et STOERMER, *M. meridionalis* S.A.SPAULDING et STOERMER, *M. supra* S.A.SPAULDING et ESPOSITO, *M. australoatlantica* and *M. relictata* (MCCALL) REICHARDT. *Muelleria relictata* is probably the most similar species based on the structure of the central striae which are only weakly more distant in comparison with the rest of the striae. A similar pattern is found in *M. levkoviana*. Both taxa have a comparable raphe structure but differ in the valve outline with *M. relictata* having less undulating valve margins and more broadly rounded apices (MCCALL 1933; REICHARDT 2004). Moreover, based on the illustration in REICHARDT (2004, plate 4, fig. 7) it is obvious that the first row of areolae is separated from the rest of the striae contrary to *M. levkoviana*. It is however unfortunate that no SEM illustrations exist of *M. relictata* to allow comparison of the areola shape and the structure and the presence of canal puncta, absent in *M. levkoviana*. *Muelleria supra* has more undulating valve margins, a larger central valve part, more distantly spaced central striae and typically large canal puncta (ESPOSITO et al. 2008). *Muelleria terrestris* is smaller with parallel valve margins while *M. meridionalis* has non-bifurcating distal raphe endings and two large canal puncta. Moreover, the areolae are large and rounded and never present the typical direction shift as is typical for *M. levkoviana* (SPAULDING et al. 1999). Finally, *M. australoatlantica* has larger central striae, longer proximal raphe endings and a high number of canal puncta and non-bifurcating raphe endings (VAN DE VIJVER et al. 2010).

***Muelleria nogae* sp. nov. (Figs 23–30)**

**Light microscopy (Figs 23–29):** Larger valves linear with a clearly widened, gibbous central part and

broadly rounded apices (Figs 23–24). Smaller valves more elliptic–lanceolate with almost convex, less gibbous margins and broadly rounded ends (Figs 25–29). Valve dimensions (n=10): length 24–50 µm, valve width 10.0–14.0 µm. Axial area rather broad, linear throughout most of its length, clearly widening to form a large, elliptic central area. First row of areolae not markedly separated from the rest of the striae. Raphe filiform, straight with clearly unilaterally bent to even hooked, long proximal raphe, completing their course entirely within the large central area, even within the smallest specimens. Distal raphe endings clearly deflected. Striae near the central area almost not more spaced than the other striae and clearly radiate whereas the other striae more distant from the central area only slightly radiate, gradually becoming parallel near the apices, 18–20 in 10 µm. Areolae clearly discernible in LM, ca. 15–20 in 10 µm.

**Scanning electron microscopy (Fig. 30):** Striae composed of large, rounded to transversally elongated, oval areolae. The smallest areolae present near the central area. Proximal raphe endings sometimes asymmetrically bent with one hooked and one simply bent. Distal raphe endings deflected, bifurcated due to the presence of a large siliceous flap. Presence of canal puncta unclear due to possible confusion with normal areolae.

**Holotype (designated here):** BR–4352 (National Botanic Garden, Meise, Belgium)

**Isotypes (designated here):** PLP–246 (University of Antwerp, Belgium), BRM–ZU9/39 (Hustedt Collection, Bremerhaven, Germany)

**Type locality:** Byers Peninsula, Livingston Island, South Shetland Islands, sample LIV–BY16A (Leg. M. Toro; coll. date 16/12/2006).

**Etymology:** The species is named after Dr. Teresa Noga (Institute of Botany, Krakow, Poland) who found the species also on King George Island.

**Ecology and distribution:** *Muelleria nogae* is a rare species found so far only on Livingston Island and on King George Island (TERESA NOGA, pers. comm.). The largest population was found in sample LIV–BY16A, taken from a biofilm in an area flooded by fresh water between stones on Byers Peninsula close to the main plateau. The sample is dominated by various taxa of *Luticola*, *Hantzschia*, *Pinnularia* and *Diadesmis*.

**Taxonomic remarks:** *Muelleria nogae* can hardly be confused with any other *Muelleria* species known so far, based on the unique, large central area. *Muelleria bachmannii* (HUSTEDT) S.A.SPAULDING et STOERMER shows a somewhat similar valve outline with a somewhat enlarged central area but the latter area never reaches the same size and shape as in *M. nogae* (SPAULDING et al. 1999, Fig. 67). Other *Muelleria* taxa with a comparable gibbous valve center such as the

more narrow *M. meridionalis* differ sufficiently not to be mistaken for *M. nogae*.

***Muelleria spauldingiana* sp. nov. (Figs 31–40)**

**Light microscopy (Figs 31–38):** Valves linear–lanceolate with convex margins and clearly capitate, broadly rounded apices. Valve dimensions (n=8): length 38–50 µm, width 8.5–9.5 µm. Axial area rather narrow, linear, only very slightly widening towards the very small central area. First row of areolae bordering the axial area separated from the striae by a narrow hyaline line. Raphe filiform and straight. Proximal raphe endings unilaterally bent, relatively long, terminating before the first row of areolae, never extending into the first row. Distal raphe endings deflected to the same side as the proximal endings. Striae near the central area (4–5 striae) more spaced than the other striae and clearly radiate whereas other striae more distant from the central area only slightly radiate, gradually becoming parallel and even weakly convergent near the apices. Central striae 13–15 in 10 µm, distal striae 19–21 in 10 µm. Striae rather coarse, areolae discernible in LM, 18–20 in 10 µm.

**Scanning electron microscopy (Figs 39–40):** Striae composed of irregularly (c- and e-) shaped areolae throughout the entire valve. Largest and most complex areolae present near the axial area, gradually becoming smaller and more rounded towards the valve margins (Fig. 39). Areolae on mantle showing similar irregular shape (Fig. 40). Proximal raphe endings bent, terminating before the first row of areolae. Distal raphe endings bifurcating due to a large siliceous flap. One large canal punctum present near distal raphe endings (Fig. 40). Due to the rarity of this taxon, no observations of the valve interior could be made.

**Holotype (designated here):** BR–4353 (National Botanic Garden, Meise, Belgium)

**Isotypes (designated here):** PLP–247 (University of Antwerp, Belgium), BRM–ZU9/40 (Hustedt Collection, Bremerhaven, Germany)

**Type locality:** Byers Peninsula, Livingston Island, South Shetland Islands, sample BY052 (Leg. B. Van de Vijver; coll. date 15/01/2009).

**Etymology:** The species is named after our colleague Dr. Sarah A. Spaulding (INSTAAR, Boulder, Colorado, USA) in recognition of her contributions to Antarctic diatom research in general and the genus *Muelleria* more specifically.

**Ecology and distribution:** *Muelleria spauldingiana* is a very rare species, occasionally observed in very low numbers in some lakes of Livingston Island (South Shetland Islands). The largest population was found in a large lake between Midge and Limnopolar Lake on the central plateau of Byers Peninsula (although only a few valves were found). The lake is characterized by a slightly alkaline pH (7.35) and low specific

conductance values (< 100 µS.cm<sup>-1</sup>).

**Taxonomic remarks:** There are hardly any *Muelleria* species that show a similar valve outline as present in *M. spauldingiana*. The most similar taxon seems to be *M. peraustralis* (W. et G.S.WEST) S.A.SPAULDING et STOERMER, described in 1911 from the Antarctic Continent (WEST & WEST 1911, SPAULDING & STOERMER 1997; VAN DE VIJVER et al. 2012). Both species can however be separated based on the shape of the areolae, being slit-like in *M. peraustralis* but very irregular, even e-shaped in *M. spauldingiana*. Moreover, *M. spauldingiana* has more capitate apices compared to the subcapitate apices in *M. peraustralis*. *Muelleria bachmannii* also shows a comparable valve outline but has very small, rounded areolae (VAN DE VIJVER, pers. obs.). *Muelleria meridionalis* is smaller with less elongated valves, non-bifurcating distal raphe endings and small, slit-like areolae. All other *Muelleria* species lack the typical capitate apices, coarse striation pattern and irregularly shaped areolae, justifying the description of *M. spauldingiana* as a new species.

***Muelleria subsabbei* sp. nov. (Figs 41–51)**

**Light microscopy (Figs 41–50):** Valves strictly lanceolate with non-protracted, broadly rounded, apices. Valve dimensions (n=20): length 18–27 µm, width 5.5–6.9 µm. Axial area moderately broad, linear, widening to form a small, elliptic central area. First row of areolae bordering the axial area separated from the striae by a narrow hyaline line. Raphe filiform and straight. Proximal raphe endings short, unilaterally bent, terminating before the first row of areolae. Distal raphe endings deflected to the same side as the proximal endings. Striae near the central area (4–5 striae) more spaced than the other striae and clearly radiate whereas other striae more distant from the central area only slightly radiate, gradually becoming parallel and even weakly convergent near the apices. Central striae ca. 18 in 10 µm, distal striae 26–28 in 10 µm. Striae rather coarse, areolae usually but not always discernible in LM.

**Scanning electron microscopy (Fig. 51):** Striae composed of very fine, transapically elongated slit-like areolae throughout the entire valve. Areolae bordering the axial area sometimes irregularly shaped, separated by hyaline zone from the rest of the striae. Proximal raphe endings bent, terminating before the first row of areolae. Distal raphe endings not bifurcating, strongly hooked onto the valve face extending into the first row of areolae, never continuing onto the mantle. One large canal punctum present near distal raphe endings. Due to the rarity of this taxon, no observations of the valve interior could be made.

**Holotype (designated here):** BR–4354 (National Botanic Garden, Meise, Belgium)

**Isotypes (designated here):** PLP–248 (University of Antwerp, Belgium), BRM–ZU9/41 (Hustedt Collection, Bremerhaven, Germany)

**Type locality:** Byers Peninsula, Livingston Island, South Shetland Islands, sample LIV–BY16C (Leg. M. Toro; coll. date 16/12/2006).

**Etymology:** The specific epithet refers to the resemblance to *Muelleria sabbei* VAN DE VIJVER et S.A.SPAULDING but showing lower valve dimensions.

**Ecology and distribution:** *Muelleria subsabbei* is a rare species found so far only in two samples on Livingston Island. The largest population was found in sample LIV–BY16C, taken between stones from a biofilm in a seepage area flooded by fresh water on Byers Peninsula close to the main plateau. The sample is dominated by various taxa of *Luticola*, *Hantzschia*, *Pinnularia* and *Diadesmis*.

**Taxonomic remarks:** *Muelleria subsabbei* is up to now the smallest *Muelleria* species observed. Other small *Muelleria* species such as *M. kristinae* VAN DE VIJVER show a different pattern of the central striae (lacking any differentiation with the rest of the striae, different distal raphe endings (never continuing onto the valve face) and different valve outlines (linear–lanceolate with acutely rounded ends compared to the strictly lanceolate valves with broadly rounded ends in *M. subsabbei*) (VAN DE VIJVER et al. 2010). *Muelleria terrestris* (PETERSEN) S.A.SPAULDING et STOERMER has more linear valves with longer proximal raphe endings. Unfortunately, SEM images for the latter species are lacking making a comparison on the distal raphe endings and the shape of the areolae impossible. *Muelleria sabbei* is much larger with clearly convex, rounded margins but shows comparable distal raphe endings terminating on the valve face, hence the nomenclatural connection between both species.

#### ***Muelleria undulatoides* sp. nov. (Figs 52–61)**

**Light microscopy (Figs 52–60):** Valves strictly linear with parallel but clearly undulated margins and almost non–protracted to weakly subcapitate (never rostrate), broadly rounded apices. Valve dimensions (n=10): length 23–29  $\mu\text{m}$ , width 6.0–7.5  $\mu\text{m}$ . Axial area narrow, linear, slightly widening forming a small, elliptic central area. First row of areolae bordering the axial area usually not separated from the striae by a narrow hyaline line, although valves with larger areolae near the axial area were observed. Raphe filiform, straight. Proximal raphe endings short, unilaterally bent, terminating before the first row of areolae. Distal raphe endings deflected to the same side as the proximal endings. Striae near the central area (6–8 striae) very slightly more spaced than the other striae and clearly radiate whereas other striae more distant from the central area only slightly radiate, parallel in the lower

1/3 of the valve and even weakly convergent near the apices. Central striae 18–20 in 10  $\mu\text{m}$ , distal striae 23–26 in 10  $\mu\text{m}$ . Striae rather coarse, areolae usually discernible in LM.

**Scanning electron microscopy (Fig. 61):** Only one eroded valve observed. Striae composed of small, rounded areolae. Areolae of the central striae smaller. Presence of canal puncta unclear. Proximal raphe endings clearly deflected, terminating before the first row of areolae. Distal raphe endings not bifurcating, continuing onto the valve mantle.

**Holotype (designated here):** BR–4355 (National Botanic Garden, Meise, Belgium)

**Isotypes (designated here):** PLP–249 (University of Antwerp, Belgium), BRM–ZU9/42 (Hustedt Collection, Bremerhaven, Germany)

**Type locality:** Hurd Peninsula, Livingston Island, sample 5–1/05 (Leg. R. Zidarova; coll. date 08/01/2005).

**Etymology:** The specific epithet refers to the undulated valve outline of the valves. It was deliberately chosen not to use the epithet ‘*undulata*’ to avoid confusion with *Navicula gibbula* var. *undulata* KRASSKE.

**Ecology and distribution:** So far the species has only been found in very low numbers in between mosses covered with thin cyanobacterial mats, collected on the shore of a small pool on Hurd Peninsula, Livingston Island, South Shetland Islands.

**Taxonomic remarks:** Actually, there is only a handful of *Muelleria* species showing an undulated valve outline. KOLBE (1959) discusses the morphology of *Navicula lagerstedtii* CLEVE but shows valves that represented a different taxon, later described as *N. dubitanda*. Therefore, several years later, HUSTEDT & KOLBE described in 1961 *Navicula dubitanda* (in 1997 later transferred to *Muelleria* by SPAULDING et STOERMER) but the illustrated valves show a species which is much bigger (up to 52  $\mu\text{m}$ ) with very narrow apices contrary to *M. undulatoides* that is smaller and has broadly rounded apices (HUSTEDT 1961). *Navicula gibbula* var. *undulata*, described in 1938 from Iceland, has a similar valve outline with undulated margins (KRASSKE 1938). Only 2 specimens could be identified from this species (LANGE–BERTALOT et al. 1996, plate 17, figs. 25, 25). Based on the illustrations, the latter taxon apparently has a finer striation pattern, compared to the coarse striae in *M. undulatoides*. Moreover, the overall valve shape appears more slender and less compacted as is the case in *M. undulatoides*. Therefore, we exclude conspecificity between both taxa despite the lack of a detailed SEM analysis between both taxa. *Muelleria holmenii* (FOGED) S.A.SPAULDING et STOERMER, described from Peary Land, Greenland (FOGED 1955), is also only known from a few specimens (SPAULDING et al. 1999). Based on the illustrated valves in SPAULDING

et al. (1999, figs 4, 5), the latter can be separated from *M. undulatooides* by the narrower rostrate apices, compared to the more subcapitate, broadly rounded apices in the new species. Other taxa showing a similar valve outline are up to now not known. Taxa such as *M. supra* or *M. meridionalis* are sufficiently different based on their gibbous central part and the differences in the raphe structure to avoid all confusion (SPAULDING et al. 1999; ESPOSITO et al. 2008).

#### ACKNOWLEDGEMENTS

Samples on Byers Peninsula (Livingston Island) were taken in the framework of the IPY–Limnopol Project POL2006–06635 (Ministerio de Ciencia y Tecnología, Spain). Samples on Hurd Peninsula (Livingston Island) were taken with the logistic support of the Bulgarian Antarctic Institute. The authors would also like to thank the members of expeditions to the Czech J.G. Mendel Antarctic Station for their support and help in the field. This study has been supported as a long-term research development project no. RVO 67985939. Mrs. K. Kopalová benefitted from an Erasmus grant during her stay in Belgium and GA UK grant nr. 394211. Part of the research was funded within the BELSPO CCAMBIO project (Belgium) and by L'Oréal–Unesco For Women in Science Program (Bulgaria).

#### REFERENCES

- CHOLNOKY, B.J. (1955): Diatomeen aus salzhaltigen Binnengewässern der westlichen Kaap–Provinz in Südafrika. – *Berichte der Deutschen Botanischen Gesellschaft* 63: 11–23.
- CLEVE, P.T. (1894): Synopsis of the naviculoid diatoms. – *Kongliga Svenska Vetenskaps–Akademiens Handlingar* 26: 1–194.
- ESPOSITO, R.M.M.; SPAULDING, S.A.; MCKNIGHT, D.M.; VAN DE VIJVER, B.; KOPALOVÁ, K.; LUBINSKI, D.; HALL, B. & WHITTAKER, T. (2008): Inland diatoms from the McMurdo Dry Valleys and James Ross Island, Antarctica. – *Botany* 86: 1378–1392.
- FERMANI, P.; MATALONI, G. & VAN DE VIJVER, B. (2007): Soil microalgal communities on an Antarctic active volcano (Deception Island, South Shetlands). – *Polar Biology* 30: 1381–1393.
- FOGED, N. (1955): Diatoms from Peary Land, North Greenland. – *Meddelelser om Grønland* 147: 1–86.
- FRENGUELLI, J. (1945): El Platense y sus diatomeas. – *Revista del Museo de La Plata, Sección Paleontología* no.16 3: 77–221.
- HAMILTON, P.B.; DE HAAN, M.; KOPALOVÁ, K.; ZIDAROVA, R. & VAN DE VIJVER, B. (2013): An evaluation of selected *Neidium* species from the Sub–Antarctic Region. – *Diatom Research* (in press) <http://dx.doi.org/10.1080/0269249X.2013.822020>
- HENDEY, N.I. (1964): An introductory account of the smaller algae of British coastal waters. Part V. Bacillariophyceae (Diatoms). – 317pp + 44 plates. , London: her Majesty's Stationery Office.
- HUSTEDT, F. (1961–1966): Die Kiesalgen Deutschlands, Österreichs und der Schweiz mit Berücksichtigung der übrigen Länder Europas sowie der Angrenzenden Meeresgebiete. – In: Dr. Rabenhorst Kryptogamen Flora von Deutschland, Österreich und der Schweiz 7(3): 1–815.
- KOLBE, R.W. (1959): Zur Taxonomie von *Navicula lagerstedtii* Cl. – *Svensk Botanisk Tidskrift* 53: 64–70.
- KOPALOVÁ, K. & VAN DE VIJVER, B. (2013): Structure and ecology of freshwater diatom communities of Byers Peninsula (Livingston Island, South Shetland Islands). – *Antarctic Science* 25: 239–253.
- KOPALOVÁ, K.; NEDBALOVÁ, L.; NÝVLIT, D.; ELSTER, J. & VAN DE VIJVER, B. (2013): Ecological assessment of the freshwater diatom communities from Ulu Peninsula (James Ross Island, NE Antarctic Peninsula). – *Polar Biology* 36: 933–948.
- KRASKE, G. (1938): Beiträge zur Kenntnis der Diatomeen–Vegetation von Island und Spitzbergen. – *Archiv für Hydrobiologie* 33: 503–533.
- KRASKE, G. (1949): Subfossile Diatomeen aus den Mooren Patagoniens und Feuerland. – *Annales Academiae Scientiarum Fennicae Series A IV. Biologica* 14: 3–94.
- LANGE–BERTALOT, H.; KÜLBS, K.; LAUSER, T.; NÖRPEL–SCHEMP, M. & WILLMANN, M. (1996): Diatom taxa introduced by Georg Krasske. Documentation and Revision. – *Iconographia Diatomologica* 3: 1–358.
- LANGE–BERTALOT, H. & GENKAL, S. (1999): Diatoms from Siberia I. – *Iconographia Diatomologica* 6: 1–271.
- MCCALL, D. (1933): Diatoms (recent and fossil) of the Tay District. – *Journal of the Linnean Society of London, Botany* 49: 219–308.
- MÜLLER, O. (1909): Bacillariaceen aus Süd–Patagonien. Beiblatt zu den Botanischen Jahrbüchern. – *Botanische Jahrbücher für Systematik, Pflanzengeschichte und Pflanzengeographie* 43: 1–40.
- ØSTRUP, E. (1910): Diatoms from North–East Greenland. Danmark Ekspedition til Grønlands Nordost, 1906–1908. – *Meddelelser om Grønland* 43: 195–254.
- PETERSEN, J.B. (1915): Studier over Danske aërofile alger. – *Det Kongelige Danske Videnskaberne Selskabs Skrifter*, 7. Raekke, Naturvidenskabelig og Mathematisk 12: 269–380.
- REICHARDT, E. (2004): Eine bemerkenswerte Diatomeenassoziation in einem Quellhabitat im Grazer Bergland, Österreich. – *Iconographia Diatomologica* 13: 419–479.
- ROUND F.E., CRAWFORD R.M. & MANN D.G. (1990): The diatoms. Biology & Morphology of the genera. – 747 pp., Cambridge University Press, Cambridge.
- SPAULDING, S.A. & STOERMER, E.F. (1997) Taxonomy and distribution of the genus *Muelleria* Frenguelli. – *Diatom Research* 12: 95–115.
- SPAULDING, S.A.; KOCIOLEK, J.P. & WONG, D. (1999) A taxonomic and systematic revision of the genus *Muelleria* (Bacillariophyta). – *Phycologia* 38(4): 314–341.
- VAN DE VIJVER, B.; MATALONI, G.; STANISH, L. & SPAULDING S.A. (2010): New and interesting species of the genus *Muelleria* (Bacillariophyta) from the Antarctic Region and South Africa. – *Phycologia* 49: 22–41.
- VAN DER WERFF, A. (1955): A new method for cleaning and concentrating diatoms and other organisms. – *Verhandlungen der Internationalen Vereinigung für theoretische und angewandte Limnologie* 12: 276–277.
- Van de Vijver, B.; Tavernier, L.; Kellogg, T.B.; Gibson, J.A.; Verleyen, E.; Vyverman, W. & Sabbe, K. (2012): Revision of the Antarctic diatom species (Bacillariophyta) described by West & West (1911) with the description of two new species. – *Fottea* 12: 149–169.
- WEST, W. & WEST, G.S. (1911): Freshwater algae. – *British Antarctic Expedition (1907–1909) Science Report, Biology* 1: 263–298.
- ZIDAROVA, R. (2008): Algae from Livingston Island (S Shetland Islands): a check–list. – *Phytologia Balcanica* 14: 19–35.

© Czech Phycological Society (2014)

Received November 11, 2013

Accepted December 13, 2013