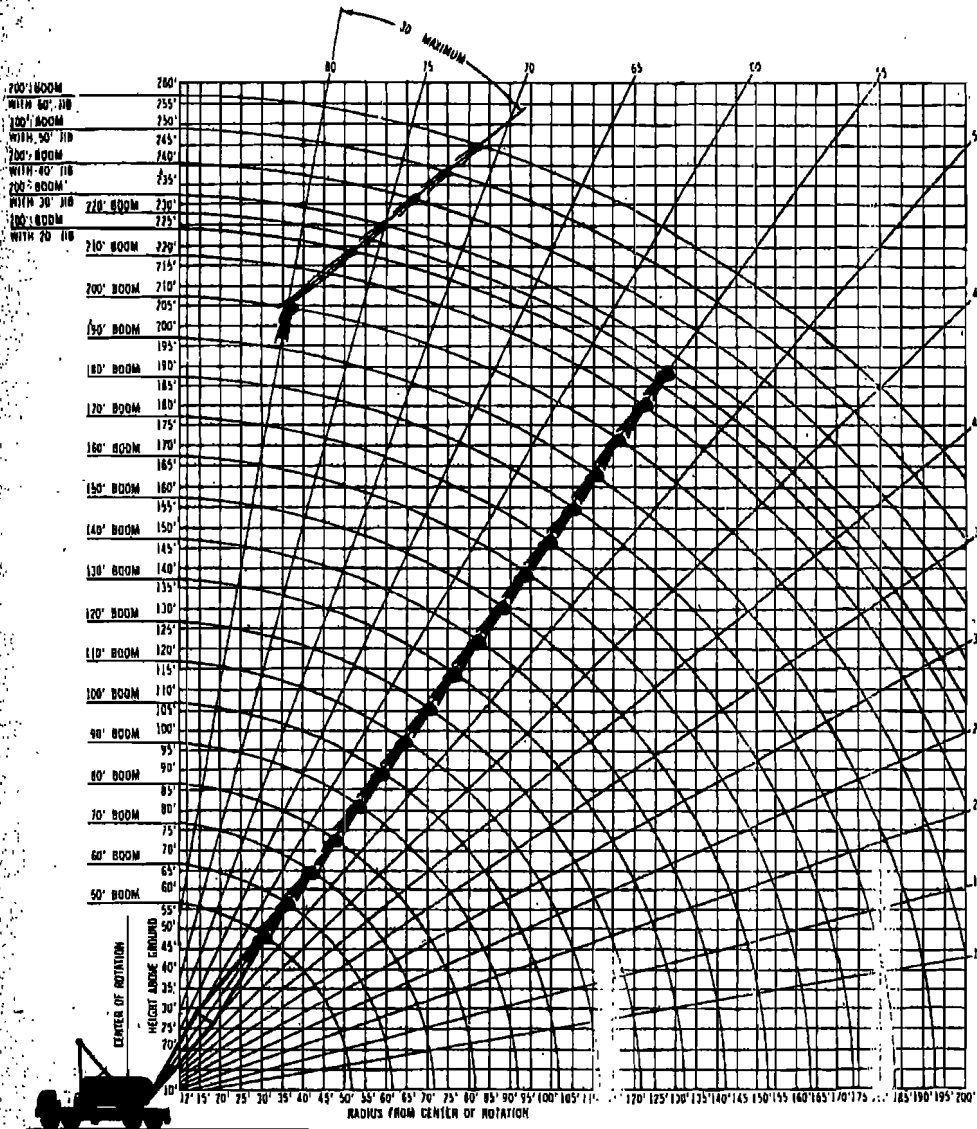




P&H® 8115-TC

115 /125 ton Truck Crane 200' Boom plus 60' Jib 220' boom



Your versatile P & H 8115-TC adapts readily to your special operating needs through a choice of counterweights and boom tips. This brochure contains these crane rating charts:

115 ton Rating Standard 220' Boom 200' Boom and 60' Jib

1. 35,500 lbs. counterweight, over side and rear — on outriggers
2. 35,500 lbs. counterweight plus 8,000 lbs. front counterweight, over rear — on outriggers
3. 38,500 lbs. counterweight plus 8,000 lbs. front counterweight, over rear — on rubber
4. 18,500 lbs. counterweight, over side and rear — on outriggers
5. 18,500 lbs. counterweight, over side and rear — on rubber

125 ton Rating Hammerhead Booms 160', 140' and 60' Jib

6. 18,500 lbs. counterweight, over side and rear — on rubber
7. 18,500 lbs. counterweight, over side and rear — on outriggers
8. 35,500 lbs. counterweight, over side and rear — on outriggers

Jib Ratings

Standard
62" wide x 62" deep
Boom

crane

lifting capacities
working ranges



operating instructions printed throughout this brochure are for your safety and will contribute to the long life of your P&H 8115-TC

Operating radius is the horizontal distance from centerline of rotation to a vertical line through the center of gravity of the load.

Ratings shown are only for combination of P & H manufactured upper, boom, jib, counterweights, carrier and outriggers. Boom backstops are required for all boom lengths. Boom inserts must be arranged as shown in the Boom Make-Up Chart. Standard boom hoist reeving is 10 part line. Gantry must be in raised position for all operating conditions except when mast is required. When boom is equipped with jib, main hook ratings must be reduced by 1500 lbs. for 20 ft. or 30 ft. jib; 2000 lbs. for 40 ft. jib; 2500 lbs. for 50 ft. jib and 3000 lbs. for 60 ft. jib. Refer to diagrams for applicable working area.

Ratings shown are based on freely suspended loads and make no allowance for such factors as wind effect on lifted loads, ground conditions, out-of-level, operating speeds or any other condition that could be detrimental to the safe operation of this equipment. The operator, therefore, has the responsibility to judge the existing conditions and reduce lifted loads and operating speeds accordingly. Ratings do not exceed 85% of tipping load as determined by SAE J 765. Deduct weight of hook block(s), slings, cement bucket, and all other load handling accessories from main boom or jib rating shown.

Maximum approved travel speed with 8,000 pound front bumper counterweight installed is 5 m.p.h. All tires must be evenly inflated to 100 P.S.I. Maximum approved boom length for travel is 130 ft. or 100 ft. boom and 30 ft. jib. Boom must be positioned over rear of carrier. Gantry must be in raised position to travel with boom attached.

Refer to pages 5-11 for additional information.

WARNING: The wind effect on the lifted load can cause sufficient side load to overstress boom or jib structure. When suspended load will not remain in line with boom, derate chart 25%. We recommend stopping operation when wind is above 30 m.p.h. and tying off or lowering boom when wind is above 50 m.p.h. When continued operation under windy conditions is necessary, consult factory for special derated load rating chart.

WARNING: When operating crane "without outriggers" loads lifted over rear and swung over side, will increase in radius due to tire deflection. This increase in radius must be compensated for by raising boom, or machine may tip over.

WARNING: Welding or other repair to tubular steel booms may weaken the structure. See your P & H dealer for authorized boom repair service. Unauthorized repair will void all warranties.

MAXIMUM BOOM LENGTH TO LIFT OFF GROUND ON OUTRIGGERS ONLY				
BOOM OVER	WITHOUT FRONT BUMPER COUNTERWEIGHT		WITH 8,000 LBS. FRONT BUMPER COUNTERWEIGHT	
	BOOM ONLY	BOOM & JIB	BOOM ONLY	BOOM & JIB
SIDE	200	190+50	200	190+50
REAR	220	190+60	220	200+60

OPTIONAL AUXILIARY REAR FLOATS MAY BE USED IN PLACE OF 8,000 LBS. FRONT BUMPER COUNTERWEIGHT FOR ERECTING MAXIMUM BOOM LENGTH AS SPECIFIED IN CHART.

210 FT. BOOM			ANGLE	220 FT. BOOM		OPER. RAD. FT.
BOOM PT. EL.	RATING LBS.			BOOM PT. EL.	RATING LBS.	
PER HITCH) REQUIRED						12
BOOM FOOT PIN.						15
					20	
					25	
					30	
					35	
					40	
214.6	36,000	80	224.6	32,200	45	
213.6	35,100	78	223.6	31,300	50	
211.1	31,400	74	221.6	29,700	60	
208.2	24,800	70	218.7	24,300	70	
205.0	20,500	70	215.6	20,200	80	
200.9	16,800	67	211.8	16,800	90	
196.2	13,800	65	207.3	13,700	100	
190.8	11,700	62	202.3	11,400	110	
184.7	9,800	59	196.5	9,550	120	
177.8	8,300	56	190.1	8,050	130	
170.0	7,000	52	182.8	6,750	140	
161.0	5,800	49	174.6	5,650	150	
150.9	4,850	45	165.0	4,700	160	
139.1	4,150	42	154.7	3,850	170	
125.0	3,400	38	142.5	3,150	180	
108.6	2,800	33	128.3	2,500	190	

without outriggers

BOOM ANG. DS.	90 FT. BOOM		ANGLE	100 FT. BOOM		OPER. RAD. FT.
	BOOM PT. EL.	RATING LBS.		BOOM PT. EL.	RATING LBS.	
					13	
					15	
					17	
					20	
700	80	68,200			25	
100	77	48,600	79	40,300	25	
700	74	39,200	76	38,800	30	
000	71	32,600	70	32,200	35	
200	67	27,700	70	27,400	40	
400	64	23,900	66	23,800	45	

32R76

210 FT. BOOM			ANGLE	220 FT. BOOM		OPER. RAD. FT.
BOOM PT. EL.	RATING LBS.			BOOM PT. EL.	RATING LBS.	
PER HITCH) REQUIRED						12
BOOM FOOT PIN.						15
					20	
					25	
					30	
					35	
					40	
214.6	36,000	80	224.6	32,200	45	
213.6	35,100	78	223.6	31,300	50	
211.1	32,700	74	221.6	29,700	60	
208.2	28,500	70	218.7	27,700	70	
204.7	23,100	70	215.0	22,800	80	
200.9	19,800	67	211.8	19,800	90	
196.2	16,800	65	207.3	16,400	100	
190.8	14,100	62	202.3	13,800	110	
184.7	12,100	59	196.5	11,800	120	
177.8	10,400	56	190.1	10,100	130	
170.0	8,800	52	182.8	8,850	140	
161.0	7,700	49	174.6	7,450	150	
150.9	6,850	45	165.0	6,350	160	
139.1	5,700	42	154.7	5,450	170	
125.0	4,900	38	142.5	4,650	180	
108.6	4,200	33	128.3	3,900	190	



counterweight

rear work areas with outriggers fully extended and set

ANGLE	130 FT. BOOM		140 FT. BOOM		150 FT. BOOM		160 FT. BOOM		170 FT. BOOM		180 FT. BOOM		190 FT. BOOM		200 FT. BOOM		OPER. RAD. FT.	
	BOOM PT. EL.	RATING LBS.	BOOM PT. EL.	RATING LBS.	BOOM PT. EL.	RATING LBS.	BOOM PT. EL.	RATING LBS.	BOOM PT. EL.	RATING LBS.	BOOM PT. EL.	RATING LBS.	BOOM PT. EL.	RATING LBS.	BOOM PT. EL.	RATING LBS.		
																	12	
																	MID-POINT SUSPENSION (CENTER HITCH) REQUIRED. ATTACH 75 FT. UP BOOM FROM BOOM FOOT PIN.	
																	15	
																	20	
																	25	
79	136.0	27,000	80	146.2	26,700												30	
77	135.0	26,400	78	145.2	26,200	78	155.4	25,900	79	165.6	25,700	80	175.8	25,400			35	
74	133.0	24,900	76	144.0	24,700	77	154.3	24,400	77	164.6	24,200	78	174.8	23,900	79	185.0	23,500*	40
72	132.2	24,100	73	142.7	24,000	75	153.0	23,600	76	163.4	23,300	76	173.7	23,000	77	184.0	22,800	45
70	130.5	23,000	71	141.1	22,800	73	151.6	22,500	74	162.0	22,300	75	172.4	22,000	76	182.8	21,800	50
65	126.3	21,600	67	137.3	21,400	69	148.1	21,100	70	158.8	20,800	71	169.4	20,600	72	179.9	20,300	55
60	121.6	20,700	63	132.3	20,400	65	144.1	20,200	66	155.1	20,000	68	165.9	19,700	69	176.7	19,400	60
55	115.2	19,400	58	127.2	19,100	60	138.9	18,800	62	150.3	18,500	64	161.5	18,200	66	172.5	17,900	65
50	107.5	18,100	53	120.3	17,800	56	132.6	17,500	58	144.6	17,200	60	156.2	16,900	62	167.6	16,600	70
43	97.9	16,800	48	112.0	16,500	51	125.2	16,200	54	137.8	15,900	56	150.0	15,600	58	161.9	15,300	80
37	85.9	15,400	42	101.8	15,100	46	116.3	14,800	49	129.8	14,500	52	142.8	14,200	55	155.3	13,900	90
28	69.9	13,900	35	89.1	13,600	40	105.5	13,300	44	120.4	13,000	48	134.3	12,700	51	147.6	12,400	100
16	45.0	12,700	27	72.3	12,400	34	92.1	12,100	39	109.1	11,800	43	124.3	11,500	46	138.7	11,200	110
			16	46.4	6,400	26	74.6	6,100	33	95.1	5,800	38	112.5	5,500	42	128.2	5,200	120
						15	47.7	5,200	25	76.9	4,950	32	98.0	4,650	37	115.9	4,400	130
									15	49.0	4,200	25	79.1	3,900	31	100.7	3,600	140
									14	50.3	3,250	24	81.2	2,950	30	103.4	2,500	150
																	160	
																	170	

32R78

RATING PLATE SUPPLEMENTAL DATA

32R72 and 32R73

When assembling boom inserts, do not cantilever more than two inserts or 60 feet of inserts past point of pendant rope attachment to boom. Relocate point of attachments out on boom as additional inserts are added.

Maximum approved boom length for travel is 120 ft. or 90 ft. boom plus 60 ft. jib. Boom must be positioned over the rear of carrier and gantry must be in raised position for travel. All tires must be evenly inflated to 100 P.S.I.

32R74, 32R75, 32R76

Machine must be on a firm level, supporting surface. All tires must be 14-00 x 24-24 ply inflated to 100 P.S.I. Load must be restrained from swinging during travel. Maximum approved travel speed; with lifted load is 1.5 m.p.h.; with front bumper counterweight but without load is 5 m.p.h. Remove front bumper counterweight for travel speeds above 5 m.p.h. Maximum approved tire pressure for highway travel is 100 P.S.I.

Maximum boom and jib length to lift off ground, over side, is 190 + 50. Any combination greater than 190 + 50 must be lifted over rear. Locate jib backstay anchor as follows: 50 ft. to 90 ft. boom at base of boom tip section, 100 ft. to 200 ft. boom — at top of second insert below boom tip section.

P&H Type 4 wire rope: 6 x 25 with filler wire, preformed improved plow steel wire rope, 7 x 7 I.W.R.C.

P&H Type 25 wire rope: 6 x 25F I.W.R.C., preformed extra improved plow steel wire rope (filler wire).

Low gear operation may be required when front or rear drum is operated on 6th or 7th layer of cable.

WARNING: READ FOR SAFETY

Machine will tip over when upper is revolved over the side with boom lengths less than 80 ft. long, unless outriggers are fully extended and set.

When seven-eighths inch diameter P&H Type II wire rope (18 x 7 non-rotating preformed plow steel wire rope fiber core) is used for jib line, maximum lifted load including hook must not exceed 11,800 lbs. Do not use dead-end swivels on non-rotating wire rope.

BOOM OVER REAR	WIRE ROPE	130 FT. BOOM		OPER. RAD. FT.
		OVER SIDE	OVER REAR	
				12
				15
				20
				25
27,900	792	22,700	27,600	30
22,500	677	18,900	22,600	35
19,400	674	15,400	19,100	40
16,300	672	12,800	16,000	45
13,900	670	10,700	13,600	50
10,400	655	7,650	10,100	60
7,900	660	5,600	7,650	70
6,100	653	4,050	5,850	80
4,740	650	2,850	4,450	90
3,650	643	2,1950	3,350	100

32R78

**PCSA CLASS 12-509**

with 18,500 lbs. cou

4 rated crane loads in pounds — main boom (62" w. x 62" d.) in over side and over re

OPER. RAD. FT.	W. ANGLE	50 FT. BOOM		ANGLE	60 FT. BOOM		ANGLE	70 FT. BOOM		ANGLE	80 FT. BOOM		ANGLE	90 FT. BOOM		ANGLE	100 FT. BOOM		ANGLE	110 FT. BOOM		ANGLE	120 FT. BOOM		ANGLE	130 FT. BOOM			
		BOOM PT. EL.	RATING LBS.		BOOM PT. EL.	RATING LBS.		BOOM PT. EL.	RATING LBS.		BOOM PT. EL.	RATING LBS.		BOOM PT. EL.	RATING LBS.		BOOM PT. EL.	RATING LBS.		BOOM PT. EL.	RATING LBS.		BOOM PT. EL.	RATING LBS.		BOOM PT. EL.	RATING LBS.	BOOM PT. EL.	RATING LBS.
12	82	57.9	230,000																										
16	79	57.4	200,000	80	67.6	200,000																							
20	73	56.2	161,100	76	66.6	161,100	78	76.8	160,900	79	87.0	160,700	80	97.2	151,800														
25	66	54.9	106,400	71	65.1	106,300	73	75.6	106,100	76	85.9	105,800	77	96.2	105,600	79	106.4	105,300	80	116.6	105,000								
30	60	53.8	78,900	65	63.1	78,800	69	73.9	78,500	72	84.5	78,300	74	94.9	78,000	76	105.3	77,700	77	115.6	77,400	78	125.8	77,200	79	136.0			
35	53	48.5	62,300	60	60.5	62,100	65	71.8	61,900	68	82.7	61,600	71	93.4	61,400	73	103.9	61,100	74	114.3	60,800	76	124.7	60,600	77	135.1			
40	45	44.1	50,900	54	57.2	50,700	60	69.1	50,500	64	80.5	50,200	67	91.4	50,000	70	102.2	49,700	71	112.8	49,400	73	123.3	49,200	74	133.5			
45	36	38.1	43,000	48	53.1	42,800	55	65.9	42,600	60	77.8	42,300	64	89.2	42,000	66	100.2	41,800	69	111.0	41,500	71	121.6	41,300	72	132.5			
50	25	29.4	37,000	41	48.0	36,800	50	62.1	36,600	56	74.6	36,300	60	86.5	36,000	63	97.8	35,700	66	108.9	35,400	68	119.8	35,300	70	130.5			
60				23	31.4	28,500	38	51.5	28,200	46	66.5	28,000	52	79.7	27,700	57	92.0	27,400	60	103.8	27,100	63	115.2	26,900	65	126.5			
70							23	35.2	22,900	36	55.8	22,800	44	71.4	22,600	50	85.1	22,300	54	97.8	22,100	58	109.9	21,900	60	121.0			
80										21	37.1	18,900	34	59.0	18,800	42	75.3	18,300	47	89.6	18,000	52	102.8	17,900	55	115.0			
100													20	38.9	15,600	32	61.9	15,300	40	79.0	15,000	45	93.9	14,800	50	107.0			
110																19	40.5	13,000	31	64.7	12,700	38	82.5	12,500	43	97.0			
120																			10	42.1	10,800	29	67.3	10,700	37	85.0			
130																						17	43.6	9,200	28	69.0			
140																									16	45.0			
150																													
160																													
170																													

WARNING:
WHEN BOOM IS EQUIPPED WITH JIB, MAIN HOOK RATING MUST BE REDUCED TO COMPENSATE FOR JIB ATTACHMENT WEIGHT.

JIB LENGTH	20 FT.	30 FT.	40 FT.	50 FT.	60 FT.
DEDUCT - LBS.	1,500	1,500	2,000	2,500	3,000

MAXIMUM BOOM LENGTH TO LIFT OFF GROUND						
BOOM OVER	WITHOUT FRONT BUMPER COUNTERWEIGHT				WITH 8,000 LBS. FRONT BUMPER COUNTERWEIGHT AND OUTRIGGERS SET	
	WITH OUTRIGGERS SET		WITHOUT OUTRIGGERS SET		BOOM ONLY	BOOM & JIB
SIDE	BOOM ONLY	BOOM & JIB	BOOM ONLY	BOOM & JIB	BOOM ONLY	BOOM & JIB
REAR	200	190 + 50	120	100 + 30	200	190 + 50
	200	190 + 60	130	110 + 30	200	200 + 60

OPTIONAL AUXILIARY REAR FLOATS MAY BE USED IN PLACE OF 8,000 LBS. FRONT BUMPER COUNTERWEIGHT FOR ERECTING MAXIMUM BOOM LENGTH AS SPECIFIED IN CHART.

5 rated crane loads in pounds — main boom — without outriggers — tires at 100 p.s

OPER. RAD. FT.	W. ANGLE	50 FT. BOOM		ANGLE	60 FT. BOOM		ANGLE	70 FT. BOOM		ANGLE	80 FT. BOOM		ANGLE	90 FT. BOOM		ANGLE	100 FT. BOOM		ANGLE	110 FT. BOOM		ANGLE	120 FT. BOOM			
		OVER SIDE	OVER REAR		OVER SIDE	OVER REAR		OVER SIDE	OVER REAR		OVER SIDE	OVER REAR		OVER SIDE	OVER REAR		OVER SIDE	OVER REAR		OVER SIDE	OVER REAR					
12	82	60,000	72,500																							
16	79	50,300	64,600	80	50,100	64,300																				
20	73	38,700	50,400	76	38,500	50,100	78	38,200	49,800	79	37,300	49,400														
25	66	31,800	37,900	71	31,100	37,600	73	30,300	37,300	76	30,000	37,000	77	29,600	36,600	79	28,800	36,300								
30	60	25,000	30,000	65	24,800	29,700	69	24,500	29,400	72	24,200	29,100	74	23,800	28,800	76	23,500	28,400	77	23,100	28,100	78	23,000	27,900		
35	53	21,100	24,600	60	20,900	24,400	65	20,600	24,100	68	20,300	23,800	71	20,000	23,400	73	19,700	23,100	74	19,300	22,700	76	19,200	22,500		
40	45	17,600	21,400	54	17,400	21,100	60	17,100	20,800	64	16,800	20,500	67	16,500	20,200	70	16,200	19,900	71	15,800	19,600	73	15,700	19,400		
45	36	15,000	18,300	48	14,700	18,000	55	14,500	17,700	60	14,200	17,400	64	13,800	17,100	66	13,500	16,800	69	13,200	16,500	71	13,000	16,300		
50	25	12,900	15,900	41	12,700	15,600	50	12,400	15,300	56	12,100	15,000	60	11,800	14,700	63	11,500	14,400	66	11,100	14,100	68	11,000	13,900		
60				23	9,680	12,100	38	9,400	11,800	46	9,100	11,500	52	8,750	11,200	57	8,450	10,900	60	8,100	10,500	63	7,950	10,400		
70							23	7,300	9,350	36	7,000	9,050	44	6,650	8,750	50	6,350	8,400	54	6,000	8,050	58	5,850	7,900		
80										21	5,450	7,250	34	5,150	6,950	42	4,800	6,600	47	4,500	6,250	52	4,300	6,100		
90													20	3,950	5,550	32	3,650	5,200	40	3,300	4,900	45	3,150	4,740		
100																19	2,700	4,150	31	2,400	3,800	38	2,200	3,650		

**PCSA CLASS 12-493****with 15 ft. hammerhead tip section and 18,500 lbs. cc**

Maximum approved boom length for travel is 120 ft. or 90 ft. boom and 60 ft. jib. All tires must be evenly inflated to 100 P.S.I. Boom must be positioned over rear of carrier. Gantry must be in raised position to travel with boom attached.

This rating plate applies only for booms equipped with a 15 ft. hammerhead tip section.

Refer to pages 4, 6-11 for additional information.

6. rated crane loads in pounds

OPER. RAD. FT.	ANGLE	40 FT. BOOM		50 FT. BOOM		ANGLE	OPER. RAD. FT.	ANGLE
		OVER SIDE	OVER REAR	OVER SIDE	OVER REAR			
12	83	58,000	71,800					
15	78	48,800	63,400	81	48,000	63,000		
20	71	37,400	48,100	75	37,200	48,800		
25	63	30,400	38,800	68	28,200	38,200		
30	54	24,800	28,600	62	24,300	28,200		
35	44	19,700	24,000	56	18,400	23,700		
40	31	16,200	18,800	48	15,800	19,800		
45				39	13,200	16,800		
50				27	11,200	14,100		
60								
70								
80								
90								
100								

WARNING: When operator is in the cab, this is to tire deflection. This is

MAXIMUM BOOM LENGTH TO LIFT OFF GROUND				
BOOM OVER	WITH OUTRIGGERS SET		WITHOUT OUTRIGGERS SET	
	BOOM ONLY	BOOM & JIB	BOOM ONLY	BOOM & JIB
SIDE	180	140 + 60	100	80 + 60
REAR	180	140 + 60	120	90 + 60

7. rated crane loads in pounds — main boom (62" w. x 62" d.) in over

OPER. RAD. FT.	ANGLE	40 FT. BOOM		ANGLE	50 FT. BOOM		ANGLE	60 FT. BOOM		ANGLE	70 FT. BOOM		ANGLE	80 FT. BOOM		ANGLE	90 FT. BOOM	
		BOOM PT. EL.	RATING LBS.		BOOM PT. EL.	RATING LBS.		BOOM PT. EL.	RATING LBS.		BOOM PT. EL.	RATING LBS.		BOOM PT. EL.	RATING LBS.		BOOM PT. EL.	RATING LBS.
12	83	48.9	250,000															
15	78	48.8	210,000	81	58.7	195,100	82	68.7	188,500									
20	71	47.5	159,800	75	57.6	159,800	77	68.0	159,500	78	78.2	159,400	81	88.3	167,900			
25	63	45.8	104,800	69	56.4	104,700	72	66.8	104,800	75	77.2	104,500	77	87.4	104,200	78	97.8	104,000
30	54	42.8	77,400	62	54.3	77,200	67	65.2	77,100	71	75.8	77,000	73	88.3	78,700	76	98.8	78,400
35	44	38.2	60,700	55	51.3	60,500	62	63.0	60,400	68	74.0	60,300	69	84.7	60,000	72	95.2	60,000
40	31	31.1	49,400	48	47.3	49,000	55	60.0	49,200	62	71.8	48,000	65	82.7	48,800	68	93.5	48,800
45				39	41.8	41,200	50	56.3	41,100	57	68.7	41,000	61	80.3	40,700	65	91.8	40,500
50				27	33.4	38,200	43	61.4	35,100	51	65.1	38,000	57	77.4	34,700	61	89.0	34,500
60							25	35.5	28,800	40	65.1	28,800	48	69.7	28,800	54	82.7	28,700
70										24	39.3	21,800	38	59.5	21,000	46	74.7	21,100
80													28	41.2	17,300	36	62.7	17,000
90																21	43.0	14,000
100																		
110																		
120																		
130																		
140																		
150																		
160																		

WARNING:
WHEN BOOM IS EQUIPPED WITH JIB, MAIN HOOK RATING MUST BE REDUCED TO COMPENSATE FOR JIB ATTACHMENT WEIGHT.

JIB LENGTH	20 FT.	30 FT.	40 FT.	50 FT.	60 FT.
DEDUCT LBS.	1,500	1,500	2,000	2,500	3,000



Counterweight

Loads — main boom — without outriggers — tires at 100 p.s.i.

	80 FT. BOOM			70 FT. BOOM			ANGLE	80 FT. BOOM			90 FT. BOOM			100 FT. BOOM			110 FT. BOOM			120 FT. BOOM			OPER. RAD. FT.
	OVER SIDE	OVER REAR	ANGLE	OVER SIDE	OVER REAR	ANGLE		OVER SIDE	OVER REAR	ANGLE	OVER SIDE	OVER REAR	ANGLE	OVER SIDE	OVER REAR	ANGLE	OVER SIDE	OVER REAR	ANGLE	OVER SIDE	OVER REAR	ANGLE	
																						12	
3	48,100	83,100																				15	
7	36,400	48,600	79	36,200	48,400	81	36,200	48,000														20	
2	29,000	38,000	75	28,800	35,800	77	28,000	35,400	78	27,200	35,100	80	26,800	34,700								25	
7	24,200	28,100	71	23,200	27,900	73	22,900	27,500	75	22,800	27,300	77	21,900	26,900	78	21,800	26,800	79	21,200	26,500		30	
12	19,300	23,500	68	19,100	23,400	69	18,700	23,000	72	18,500	22,800	74	18,100	22,400	75	18,000	22,300	76	17,800	22,100		35	
18	16,800	19,500	62	16,600	19,300	65	16,200	18,900	68	16,000	18,700	71	14,800	18,300	72	14,600	18,200	74	14,200	18,000		40	
30	13,100	16,400	57	12,800	16,200	61	12,600	15,800	65	12,300	15,600	68	11,800	15,200	70	11,800	15,100	71	11,800	14,900		46	
43	11,000	14,000	51	10,800	13,800	57	10,500	13,400	61	10,200	13,200	64	9,900	12,800	67	9,800	12,700	68	9,550	12,500		50	
25	8,000	10,400	40	7,800	10,200	48	7,450	9,900	54	7,250	9,650	58	6,850	9,000	61	6,800	9,200	64	6,600	8,960		60	
			24	5,700	7,800	38	5,350	7,450	46	5,150	7,200	51	4,750	6,800	55	4,700	6,750	59	4,400	6,500		70	
						23	3,850	5,650	36	3,800	5,400	43	3,200	5,000	48	3,150	4,960	53	2,900	4,680		80	
									21	2,400	4,000	33	2,050	3,650	41	1,850	3,550	45		3,300		90	
											20		2,550	32		2,450	39		2,200		100		

32R73

Operating crane "without outriggers" loads lifted over rear and swung over side, will increase in radius due to increase in radius must be compensated for by raising boom, or machine may tip over.

Over side and over rear work areas with outriggers fully extended and set

ANGLE	100 FT. BOOM		ANGLE	110 FT. BOOM		ANGLE	120 FT. BOOM		ANGLE	130 FT. BOOM		ANGLE	140 FT. BOOM		ANGLE	150 FT. BOOM		ANGLE	160 FT. BOOM		OPER. RAD. FT.	
	BOOM PT. EL.	RATING LBS.		BOOM PT. EL.	RATING LBS.		BOOM PT. EL.	RATING LBS.		BOOM PT. EL.	RATING LBS.		BOOM PT. EL.	RATING LBS.		BOOM PT. EL.	RATING LBS.		BOOM PT. EL.	RATING LBS.		BOOM PT. EL.
																					12	
																						15
																						20
																						25
80	107.8	103,700																				30
77	106.8	78,100	78	117.0	76,000	78	127.2	75,800	80	137.3	75,600											35
74	105.8	58,500	75	116.0	58,500	76	126.2	59,200	78	136.4	58,900	78	146.6	58,700	79	156.8	58,400	80	166.9	58,200		40
71	104.1	48,300	72	114.6	48,200	74	125.0	48,000	75	135.3	47,700	76	145.6	47,400	77	155.8	47,200	78	166.0	47,000		45
68	102.3	40,200	70	113.0	40,100	71	123.5	39,900	73	134.0	39,800	74	144.4	39,300	75	154.7	39,000	76	165.0	38,800		50
64	100.2	34,200	67	111.1	34,100	69	121.8	33,800	71	132.4	33,500	72	142.8	33,300	73	153.4	33,000	74	163.7	32,800		55
58	94.7	25,800	61	106.3	25,700	64	117.6	25,400	66	128.6	25,100	68	139.4	24,800	69	150.1	24,600	71	160.7	24,600		60
51	88.2	20,800	55	100.7	20,700	58	112.6	20,500	61	124.1	20,200	63	135.3	19,900	65	146.4	19,800	67	157.2	19,400		70
43	78.8	16,700	48	92.8	16,700	53	105.8	16,400	56	118.0	16,100	59	129.9	15,800	61	141.4	15,500	63	152.7	15,400		80
33	65.7	13,700	41	82.5	13,700	46	97.2	13,400	50	110.8	13,100	54	123.3	12,800	57	135.4	12,500	59	147.2	12,300		90
20	44.7	11,400	32	68.5	11,300	39	86.1	11,100	44	101.3	10,800	48	115.2	10,500	52	128.2	10,200	55	146.7	10,000		100
			19	46.2	9,500	20	71.2	9,250	37	88.5	8,900	43	105.2	8,600	47	119.5	8,300	50	133.0	8,150		110
						18	47.8	7,750	28	73.8	7,400	36	92.8	7,150	41	109.0	6,800	45	123.8	6,650		120
									17	49.2	6,150	26	76.2	5,900	35	93.9	5,650	40	112.6	5,400		130
												17	60.8	4,850	27	78.8	4,500	34	98.9	4,350		140
															16	61.9	3,800	26	80.9	3,460		150
															16	53.2	2,700					160

32R73

**PCSA CLASS 12-607****with 15 ft. hammerhead tip section and 35,500 lbs. counterweight**

(ratings shown are based on a counterweight of 18,500 lbs. and 17,0

8. rated crane loads in pounds — main boom (62" w x 62" d.) in over side and over

OPER. RAD. FT.	ANGLE	40 FT. BOOM		50 FT. BOOM		60 FT. BOOM		70 FT. BOOM		80 FT. BOOM		90 FT. BOOM		100 FT.	
		BOOM PT. EL.	RATING LBS.	BOOM PT. EL.	RATING LBS.	BOOM PT. EL.	RATING LBS.	BOOM PT. EL.	RATING LBS.	BOOM PT. EL.	RATING LBS.	BOOM PT. EL.	RATING LBS.	BOOM PT. EL.	RATING LBS.
12	83	48.9	260,000												
15	78	48.6	210,000	81	58.7	195,100	82	68.7	186,500	RATINGS ABOVE HEAVY LINE ARE LIMITED BY STRENGTH OF MATERIALS.					
20	71	47.5	170,000	76	57.8	169,400	77	68.0	168,000	79	78.2	168,600	81	88.3	157,900
25	63	45.8	128,700	69	56.4	128,800	72	66.9	128,500	75	77.2	128,300	77	87.4	128,000
30	54	42.6	93,900	62	54.3	93,700	67	65.2	93,600	71	75.6	93,400	73	88.3	93,200
35	44	38.2	74,100	55	51.3	73,900	62	63.0	73,900	66	74.0	73,700	69	84.7	73,400
40	31	31.1	60,700	48	47.3	60,700	56	60.0	60,500	62	71.8	60,400	66	82.7	60,100
45				38	41.8	51,200	50	58.3	51,000	57	68.7	50,900	61	80.3	50,800
50				27	33.4	44,000	43	51.4	43,900	51	65.1	43,700	57	77.4	43,400
60							25	35.5	33,800	40	55.1	33,800	48	69.7	33,300
70										23	37.4	28,900	37	58.4	28,800
80													23	41.2	22,300
90														21	43.0
100															20
110															
120															
130															
140															
150															
160															

WARNING:
WHEN BOOM IS EQUIPPED WITH JIB MAIN HOOK RATING MUST BE REDUCED TO COMPENSATE FOR JIB ATTACHMENT WEIGHT

JIB LENGTH DEDUCT LBS.	20 FT.	30 FT.	40 FT.	50 FT.	60 FT.
1500	1500	1500	2000	2500	3000

jib ratings, drum data, reeving and boom mal

Jib crane ratings are based on strength of materials. When main boom load rating at operating radius is less than maximum jib ratings stability governs and the lower value of main boom load rating must be used. Jibs are intended to increase lifting height — not operating radius — therefore maximum jib operating radius is limited to maximum rated radius of boom length on which jib is mounted.

MAXIMUM JIB (24" W x 22" D) RATINGS FOR LIFTING CRANE SERVICE — LBS.					
SEVEN-EIGHTS INCH DIA. P&H TYPE 4 WIRE ROPE					
* USE TWO PARTS OF LINE FOR LOADS ABOVE 19,500 LBS.					
OFFSET ANGLE JIB TO BOOM UNDER FULL LOAD	20 FT. JIB	30 FT. JIB	40 FT. JIB	50 FT. JIB	60 FT. JIB
10°	22,000*	20,000*	16,000	12,000	8,000
20°	18,000	14,500	12,000	9,500	7,000
30° MAX.	13,000	11,000	8,500	7,000	6,000
MAXIMUM JIB RATINGS FOR BUCKET SERVICE — LBS.					
10°	18,500	16,000	12,800	9,800	8,400
20°	12,800	11,800	9,000	7,800	5,600
30° MAX.	10,400	8,800	6,800	5,600	4,800

This P & H Model B115-TC meets the requirements of ANSI B30.5-1968. Boom structure has been tested per SAE J987. Machine stability has been tested per SAE J765.

WARNING

Using this equipment in excess of rated loads, in areas of chart not rated, or with disregard of instructions will result in unsafe operating conditions and is a violation of the U.S. Dept. of Labor Safety and Health Regulations for Construction.



weight

(d 17,000 lbs.)

d over rear work areas with outriggers fully extended and set

100 FT. BOOM		110 FT. BOOM		120 FT. BOOM		130 FT. BOOM		140 FT. BOOM		150 FT. BOOM		160 FT. BOOM		OPER.						
BOOM PT. EL.	RATING LBS.	ANGLE	BOOM PT. EL.	RATING LBS.	ANGLE	BOOM PT. EL.	RATING LBS.	ANGLE	BOOM PT. EL.	RATING LBS.	ANGLE	BOOM PT. EL.	RATING LBS.	RAD. FT.						
MAXIMUM BOOM LENGTH ON WHICH A JIB CAN BE MOUNTED IS 140 FT. MAXIMUM BOOM AND JIB TO LIFT OFF GROUND OVER SIDE OR REAR IS 140 FT. 60 FT. LOCATE JIB BACKSTAY ANCHOR AS FOLLOWS: 50 FT. TO 70 FT. - TO TOP OF FIRST INSERT BELOW BOOM TIP SECTION; 80 FT. TO 140 FT. BOOM - AT TOP END OF SECOND INSERT BELOW BOOM TIP SECTION.														12						
														15						
														20						
107.8	125,500													25						
108.8	92,800	78	117.0	82,500	79	127.2	92,900	80	137.3	88,300				30						
105.8	72,800	75	116.0	72,800	76	128.2	72,500	78	136.4	72,200	78	148.6	71,800	79	156.8	68,400	80	166.8	82,800	35
104.1	59,600	72	114.6	59,400	74	125.0	59,200	75	136.3	58,900	76	145.6	58,600	77	155.8	58,200	78	166.0	58,100	40
102.3	50,000	70	113.0	49,800	71	123.5	49,600	73	134.0	49,800	74	144.4	49,300	75	154.7	49,000	76	165.0	48,800	45
100.2	42,800	67	111.1	42,800	69	121.8	42,600	71	132.4	42,300	72	142.9	42,000	73	153.4	41,700	74	163.7	41,500	50
94.7	32,700	61	108.3	32,700	64	117.8	32,400	66	128.6	32,100	68	139.4	31,800	69	150.1	31,500	71	160.7	31,300	60
87.5	26,000	55	100.1	26,800	58	112.1	26,700	61	123.7	26,400	63	134.9	26,100	65	146.0	24,700	67	156.9	24,600	70
78.8	21,700	48	92.8	21,700	53	105.8	21,400	56	118.0	21,100	59	129.9	20,900	61	141.4	20,600	63	152.7	20,400	80
66.7	18,100	41	82.5	18,000	46	97.2	17,800	50	110.6	17,500	54	123.3	17,200	57	135.4	16,900	59	147.2	16,700	90
44.7	15,300	32	68.5	15,200	39	86.1	15,000	44	101.3	14,800	48	115.2	14,400	52	128.2	14,000	55	140.7	13,800	100
		19	46.2	13,000	30	71.2	12,700	37	88.5	12,400	43	105.2	12,100	47	119.5	11,800	50	133.0	11,800	110
					18	47.8	10,900	29	73.8	10,600	36	92.8	10,300	41	109.0	10,000	45	123.8	9,800	120
								17	49.2	9,050	28	76.2	8,800	35	95.9	8,450	40	112.6	8,250	130
											17	50.8	7,500	27	78.6	7,150	34	98.9	7,000	140
														16	51.9	6,100	26	80.9	5,800	150
														16	53.2	5,000				160

32R72

make-up

standard boom

MAIN HOIST DRUM RATED LOADS FOR ONE INCH DIA. P&H TYPE 4 WIRE ROPE										
NUMBER OF PARTS OF MAIN HOIST REEVING	1	2	3	4	5	6	7	8	9	10
MAXIMUM LOAD - LBS.	23,000	46,000	69,000	92,000	115,000	138,000	161,000	184,000	207,000	230,000

hammerhead boom

MAIN HOIST DRUM RATED LOADS FOR ONE INCH DIA. P&H TYPE 4 WIRE ROPE										
NUMBER OF PARTS OF MAIN HOIST REEVING	1	2	3	4	5	6	7	8	9	10
MAXIMUM LOAD - LBS.	23,000	46,000	69,000	92,000	115,000	138,000	161,000	184,000	207,000	250,000

standard boom

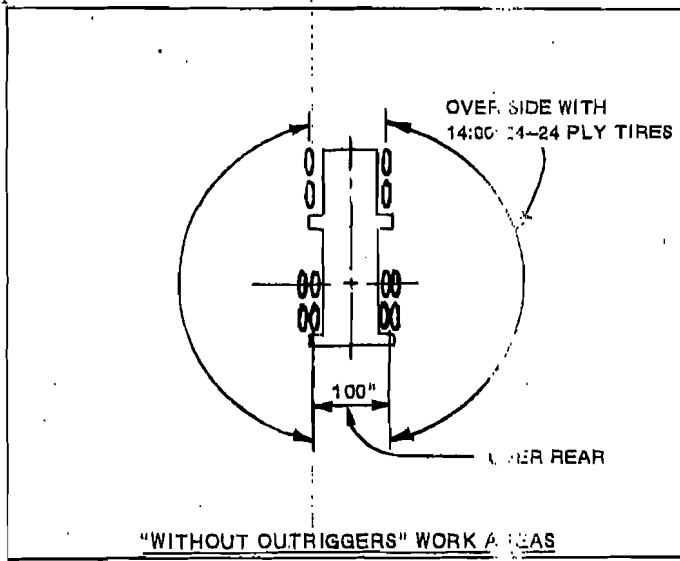
BOOM LENGTH FT.	INSERT ARRANGEMENT
90	BASE-A-C-TIP
100	BASE-C-B-TIP
110	BASE-A-C-B-TIP
120	BASE-D-B-TIP
130	BASE-C-D-TIP
140	BASE-A-C-D-TIP
150	BASE-B-C-D-TIP
160	BASE-A-B-C-D-TIP
170	BASE-B-D-D-TIP
180	BASE-C-D-D-TIP
190	BASE-D-A-C-D-TIP
200	BASE-D-D-D-TIP
210	BASE-D-A-D-D-TIP
220	BASE-D-B-D-D-TIP

BASE SECTION IS 25 FT.; TIP SECTION IS 15 FT.
 INSERTS ARE: A=10 FT.; B=20 FT.; C=30 FT.; D=50 FT.

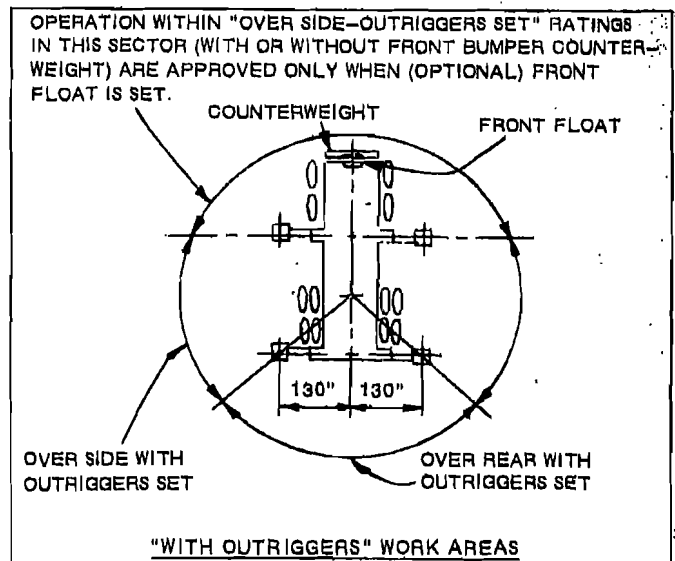
hammerhead boom

BOOM LENGTH FT.	INSERT ARRANGEMENT
90	BASE-B-C-TIP
100	BASE-A-B-C-TIP
110	BASE-B-D-TIP
120	BASE-C-D-TIP
130	BASE-A-C-D-TIP
140	BASE-B-C-D-TIP
150	BASE-A-B-C-D-TIP
160	BASE-B-D-D-TIP

BASE SECTION IS 25 FT.; TIP SECTION IS 15 FT.
 INSERTS ARE: A=10 FT.; B=20 FT.; C=30 FT.; D=50 FT.



32R76



32R76

ALL TIRES MUST BE 14:00 x 24-24 PLY FOR OVER REAR WITHOUT OUTRIGGER LIFTS.

OPER. RAD. FT.	TIRE PLY	SWING AREA RESTRICTED AS INDICATED BELOW	"A" INCHES
13	14	18	18
15	16	36	36
17-20	18	60	60
25-40	20	60	60

NOTE: For loads of 78,200 lbs. or less, maximum swing area is 50 inches from longitudinal ϕ of carrier at all operating radii with 125 P.S.I. tire pressure. For loads of 50,300 lbs. or less, maximum swing area is 50 inches from longitudinal ϕ of carrier at all operating radii with 100 P.S.I. tire pressure.

OVER REAR WORK AREA WITH 8,000 LBS. FRONT BUMPER COUNTERWEIGHT INSTALLED

32R76

AREAS OF OPERATION

NOTE: OPERATION OF THIS EQUIPMENT IN EXCESS OF LOAD RATINGS AND DISREGARD OF INSTRUCTIONS VOIDS THE WARRANTY.

standard boom

BOOM LENGTH FT.	RECOMMENDED WIRE ROPE LENGTH FOR DRUMS - FT.	
	MAIN HOIST DRUM	JIB HOIST DRUM
50	620	270
60	665	300
70	690	330
80	695	360
90	775	390
100	750	420
110	705	450
120	765	480
130	690	510
140	740	540
150	790	570
160	675	600
170	715	630
180	755	660
190	795	690
200	630	720
210	660	—
220	690	—

hammerhead boom

BOOM LENGTH FT.	RECOMMENDED WIRE ROPE LENGTH FOR DRUMS - FT.	
	MAIN HOIST DRUM	JIB HOIST DRUM
50	510	—
60	565	270
70	665	300
80	615	330
90	695	360
100	680	390
110	750	420
120	705	450
130	765	480
140	690	510
150	740	540
160	635	—
170	675	—

standard boom

OPER. RAD. FT.	RATED LOADS IN POUNDS - MAIN BOOM				
	CLAMSHELL 2.5 CU. YDS. MAX.			DRAGLINE 2.5 CU. YDS. MAX.	
	50 FT. BOOM	60 FT. BOOM	70 FT. BOOM	50 FT. BOOM	60 FT. BOOM
20	20,000	20,000	—	—	—
25	20,000	20,000	18,850	—	—
30	19,920	19,760	16,100	—	—
35	16,800	16,640	15,050	—	—
40	14,000	13,840	13,680	15,750	—
45	11,920	11,760	11,520	13,410	13,320
50	10,240	10,080	9,920	11,520	11,340
60	—	7,680	7,480	—	8,640
70	—	—	5,800	—	—

Clamshell ratings shown also apply to magnet, grapple and all other material handling buckets except dragline which is raised separately.

For clamshell and magnet operations, the weight of bucket or magnet is considered a part of the load and the total weight of bucket plus contents or magnet plus load must not exceed the corresponding ratings shown.