

FRIENDS

The research for  
**Gardeners, Plant  
Collectors, Friends**

TASMANIAN  
MUSEUM &  
ART GALLERY

In association with the Royal Society of Tasmania



THE  
FORCING, FRUIT, AND KITCHEN  
GARDENER:

COMPREHENDING THE FORCING OF

ASPARAGUS,	GRAPES,	PEACHES,
CUCUMBERS,	MELONS,	PINE APPLES,
CHERRIES,	MUSHROOMS,	AND
FIGS,	NECTARINES,	STRAWBERRIES.

TOGETHER WITH THE  
Management of the GREEN-HOUSE—Culture of  
WALL and ORCHARD FRUITS—KITCHEN VE-  
GETABLES, SALLADS and HERBS.

THIRD EDITION, WITH LARGE ADDITIONS.

Illustrated with SIX NEW COPPERPLATES;  
CONTAINING TEN DIFFERENT DESIGNS OF HOT-HOUSES, HOT-WALLS, &c.  
ON THE NEWEST AND MOST IMPROVED CONSTRUCTIONS.

By WALTER NICOL,

Author of "THE PRACTICAL PLANTER," and of an "ESSAY ON GARDEN-  
ING," drawn up by Desire, and for Consideration of the Board of  
Agriculture; and Corresponding Member of the Natural  
History Society of Edinburgh.

EDINBURGH:

PRINTED FOR WILLIAM CREECH;  
AND SOLD IN LONDON BY T. CADELL JUN. & W. DAVIES;  
J. SCATCHERD, AND T. HURST.

1802.

Walter Nicol  
M. A.  
Gift of the Dowager Lady  
Spencer, at Devonshire  
House, London.



CHART  
of  
SULLIVANS COVE  
and PORT of  
HOBART TOWN  
*Vin Vanman's Land*  
Showing the Intended Improvements.

HOBART

HOBART  
Engineering Office April 30th 1828.

J. La Roche

AOT

England  
1805

Van Diemens  
Land

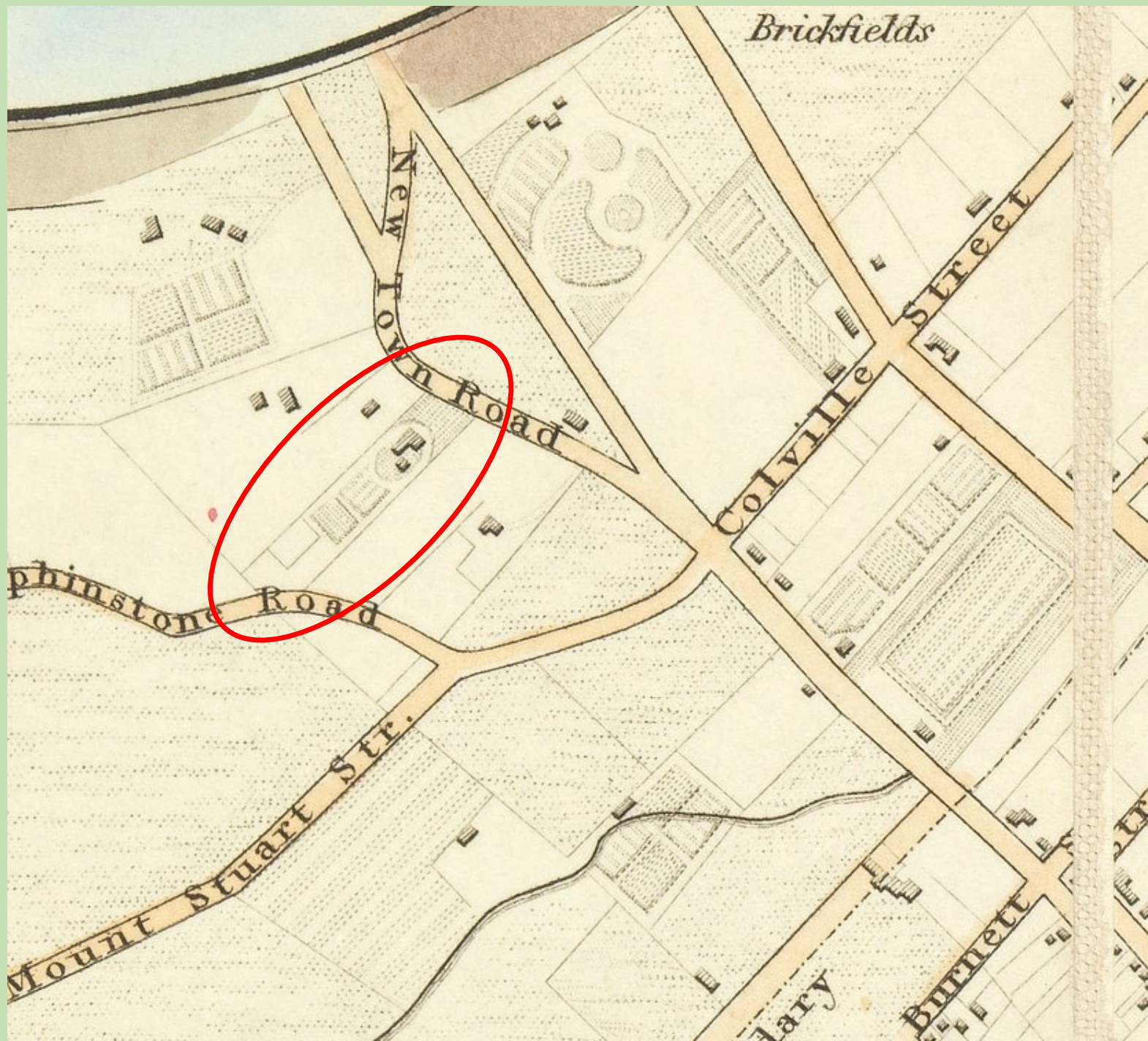
January  
February  
March  
April  
May  
June  
July  
August  
September  
October  
November  
December

July  
August  
September  
October  
November  
December  
January  
February  
March  
April  
May  
June

N.B. The difference of time at Van Diemens  
Abbot Town Van Diemens Land, and by sea back  
is nine hours forty seven minutes  
earlier than there.

Monday  
Tuesday  
Wednesday  
London  
Thursday  
Justice  
Friday  
Herdman  
Saturday  
Berry Hill  
Sunday  
Miaham

UTAS SPARC



HOBART TOWN  
Detail  
FRANKLAND  
1839  
AOT



Moreton  
Bay Fig

SR N 080 PAM V 104, no 1900

581.9944

1900

HORTUS TASMANIENSIS,

OR

A GUIDE TO THE FLORA OF VAN DIEMEN'S LAND.

\*\* The Generic Names are distinguished by being printed in Italics.

CLASS THE FIRST.

MONANDRIA.—Plants with one stamen.

ORDER THE FIRST.

MONOGYNIA.—Plants having one style.

LATIN NAME.	BOTANICAL NAME.
<i>Hellenia</i> (1)	<i>Hellenia</i> Sea <i>8 p 146</i>
<i>Cærulea</i>	Blue

ORDER THE SECOND.

DIGYNIA.—Plants with two styles.

<i>Zosteria</i> (2)	<i>Wrackgrass</i>
Marina	Sea

CLASS THE SECOND.

DIANDRIA.—Plants with two stamens.

ORDER THE FIRST.

MONOGYNIA.—Plants with one style.

<i>Notelea</i> (3)	<i>Notelea</i>
Ovata	Oval leaved
Ligustrina	Privet like
Rigida	Rigid leaved
<i>Pimelea</i> (4)	<i>Pimelea</i>
Drupacea	Fleshy fruited
Nudosa	Nodding
Rosea	Rose coloured
Decussata	Cross leaved
Pauciflora	Few flowered
Linifolia	Flax leaved

Samuel Bence

NLA

LATIN NAME.	BOTANICAL NAME.
Formosa	Large flowered
Parviflorum	Small flowered
Goodia (222)	Native <i>Laburnum</i>
Latifolia	Broad leaved
Pubescens	Downy
Rosa	Rose coloured
Retusa	Retuse leaved
Templetonia (223)	<i>Templetonia</i>
Glaucia	Glaucous
Crotolaria (224)	<i>Crotolaria</i>
Australis	Australian
Kenneydia (225)	<i>Kenneydia</i>
Procumbens	Trailing
Monophylla	Simple leaved
Hovea (226)	<i>Hovea</i>
Linearis	Linear leaved
Ovata	Oval
Latifolia	Broad leaved
Pinifolia	Pine leaved
Smithia (227)	<i>Smithia</i>
Conferta	Close flowered
Swainsonia (228)	<i>Swainsonia</i>
Galegiafolia	Goat's rue leaved
Lotus (229)	<i>Lotus</i>
Australis	Southern
Zamia (230)	Netted podded
Dictiocarpa	<i>Indigo</i>
Indigophera (231)	Native
Australis	White flowered
Alba	<i>Typhrosia</i>
Typhrosia (232)	Three coloured
Tricolor	

## CLASS THE EIGHTEENTH.

POLYADELPHIA.—Plants with stamens divided into three or more distinct sets or families by their filaments.

## ORDER THE SECOND.

DODECANDRIA.—Plants with from twelve to nineteen stamens united into more than two sets.

<i>Abroma</i> (233)	<i>Abroma</i>
<i>Fastuosa</i>	Prickly stalked

*Calotis* (231)  
*Cuneifolia*

## ORDER THE THIRD.

ICOSANDRIA.—Plants with twenty or more stamens united into more than two sets.

LATIN NAME.	BOTANICAL NAME.
<i>Melaleuca</i> (234)	<i>Melaleuca</i>
Linariafolia	Narrow leaved
Squamea	Scaly
Genistifolia	Broom leaved
Glaucous	Four sided
Divaricata	Divaricated
Australis	Pulchella
Lanata	Woolly
Ericifolia	Heath leaved
Tenuifolia	Slender leaved
Hypericifolia	Hypericum leaved
Fimbriata	Fringe flowered
Tristania (235)	<i>Tristania</i>
Laurinea	Laurel leaved
Calothamnus (236)	<i>Calothamnus</i>
Villosa	Hairy
Gracilis	Graceful
Beaufortia (237)	<i>Beaufortia</i>
Sparsa	Alternate
Decussata	Splendid
Astarea (238)	<i>Astarea</i>
Fascicularis	Bundle flowered

## ORDER THE FOURTH.

POLYANDRIA.—Plants having many stamens united in more than two sets.

<i>Hypericum</i> (239)	<i>St. John's Wort</i>
Pussillum	Small yellow
Involutum	Involute

## CLASS THE NINETEENTH.

SYNGENESIA.—Plants with several flowers inclosed in one common calyx; the stamens united in a cylinder.

## ORDER THE FIRST.

POLYGAMIA ÆQUALIS.—Plants with the florets perfect, each having stamens and pistils, and producing one seed.

<i>Loodia</i> (240)	<i>Loodia</i>
Achillaeoides	Milfoil like
Humea (241)	<i>Humea</i>

Wedge leaved

## LATIN NAME.

Elegans  
*Ozothamnus* (242)  
Ferrugineous  
Cinerius  
Rosmarinifolius  
Fruticosa  
*Calceitium* (243)  
Salicinum  
Linariafolium  
Verticillata  
*Craspedia* (244)  
Glaucia  
Plebea  
Grandiflora  
Montana

## BOTANICAL NAME.

Rose coloured  
*Ozothamnus*  
Rusty leaved  
Grey  
Rosemary leaved  
Shrubby  
*Honey Tree*  
Willow leaved  
Narrow leaved  
Whorled  
*Craspedia*  
Glaucous  
Vulgar  
Large flowered  
Mountain

## ORDER THE SECOND.

POLYGAMIA SUPERFLUA.—Plants with the florets of the disk of the compound flower perfect; those of the circumference having pistils only, but both producing perfect seed.

*Helichrysum* (245)  
Incana  
Dealbatum  
Apiculatum  
*Gnaphalium* (246)  
Longifolium  
Senecioides  
*Xeranthemum* (247)  
Lucidum  
Bracteatum  
*Aster* (248)  
Argophyllum  
Tomentosus  
Viscosus  
Stellutatus  
Erubescens  
Myrsinoides  
Phlogopappus  
Lyratus  
Aculeatus  
*Podolepis* (249)  
Gracilis  
*Buphthalmum* (250)  
Alba—non  
*Calotis* (251)  
Cuneifolia

## Everlasting Flower

Hoary  
Herbaceous  
Australian  
*Cud Weed*  
Long leaved  
Groundsel like  
*Xeranthemum*  
Shining  
Yellow  
*Star Wort*  
Musk tree  
Daisy tree  
Clammy  
Starry haired  
Blush flowered  
Box leaved  
Shining haired  
Fluted stemmed  
Prickly  
*Podolepis*  
Slender  
*Ox Eye*  
White species  
*Calotis*  
Wedge leaved

## ORDER THE FIFTH.

POLYGAMIA SEGREGATA.—Plants with many flowers, either simple or compound, but with the anthers united, and a proper calyx all included in one common calyx.

LATIN NAME.	BOTANICAL NAME.
<i>Cassinea</i> (252)	<i>Cassinea</i>
Affinis	Connected
Aurea	Yellow
Denticulata	Toothed

## CLASS THE TWENTIETH.

GYNDANDRIA.—Plants with the stamens situated on the style.

## ORDER THE FIRST.

MONANDRIA.—Plants with one stamen only, attached to the style.

<i>Pterostylis</i> (253)	<i>Pterostylis</i>
Cuculata	Hooded
Pedunculata	Peduncled
Squamata	Scaly
Banksii	Banks's
Nutans	Nodding
Nana	Dwarf
<i>Liparis</i> (254)	<i>Liparis</i>
Reflexa	Reflexed
<i>Dendrobium</i> (255)	<i>Dendrobium</i>
Lingueforme	Tongue leaved
<i>Cymbidium</i> (256)	<i>Cymbidium</i>
Suave	Sweet
<i>Neottia</i> (257)	<i>Neottia</i>
Australis	Southern
<i>Orthocerus</i> (258)	<i>Orthocerus</i>
Strictum	Upright
<i>Prasophyllum</i> (259)	<i>Prasophyllum</i>
Alpinum	Alpine
Australe	Australian
<i>Cryptostylis</i> (260)	<i>Cryptostylis</i>
Longifolia	Long leaved
<i>Cyrtostylis</i> (261)	<i>Cyrtostylis</i>
Reniformis	Kidney leaved
<i>Diaris</i> (262)	<i>Diaris</i>
Pedunculatus	Peduncled
Aureum	Yellow
Maculata	Spotted
<i>Eriochilus</i> (263)	<i>Eriochilus</i>
Autumnale	Autumnal
<i>Glossodia</i> (264)	<i>Glossodia</i>
Major	Tall

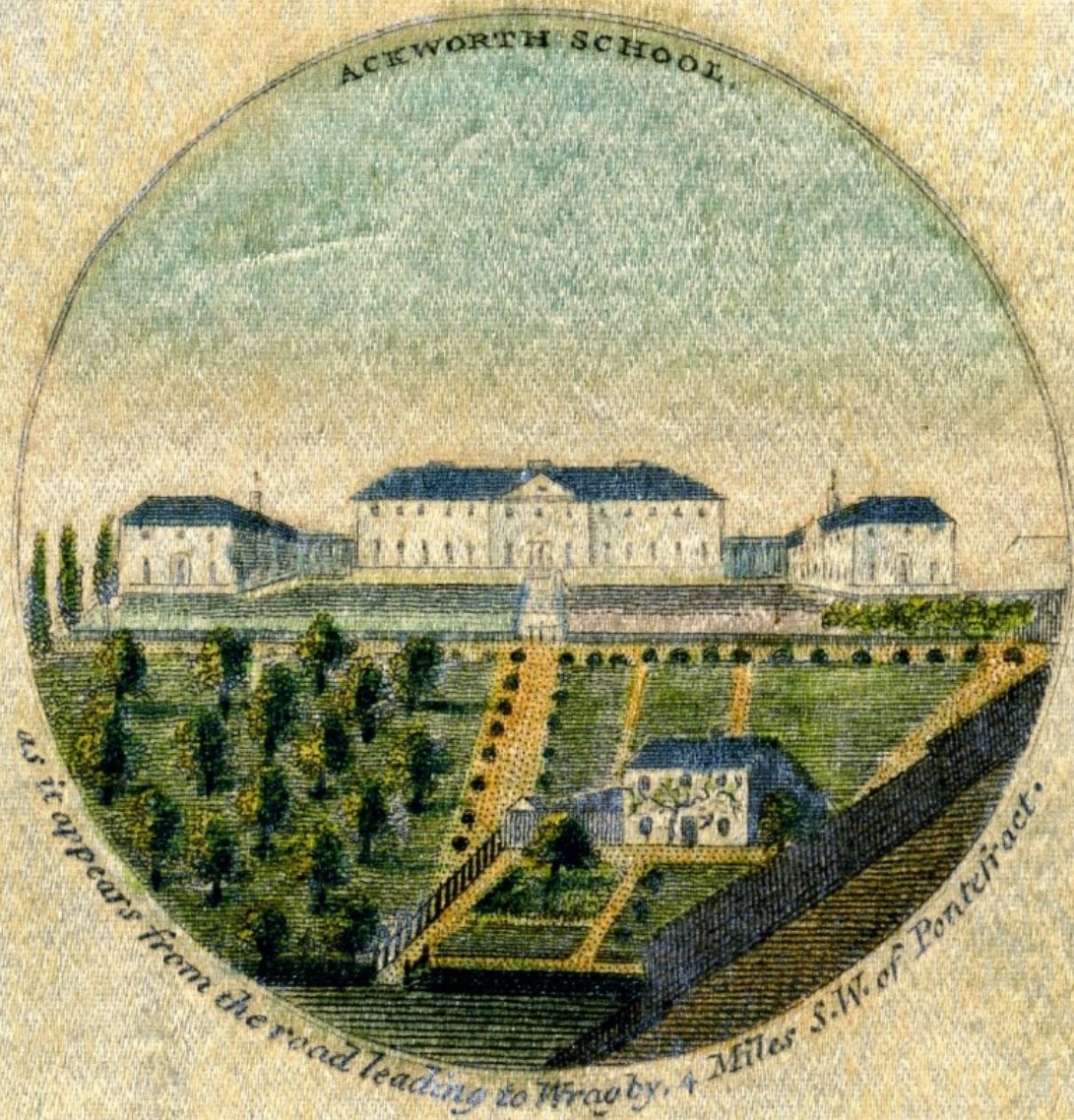
I have specimens of 130 species  
of Syngenesia - Here only 35 &  
many not existing in the colony.

Hortus Tasmaniensis  
NLA





TMAG



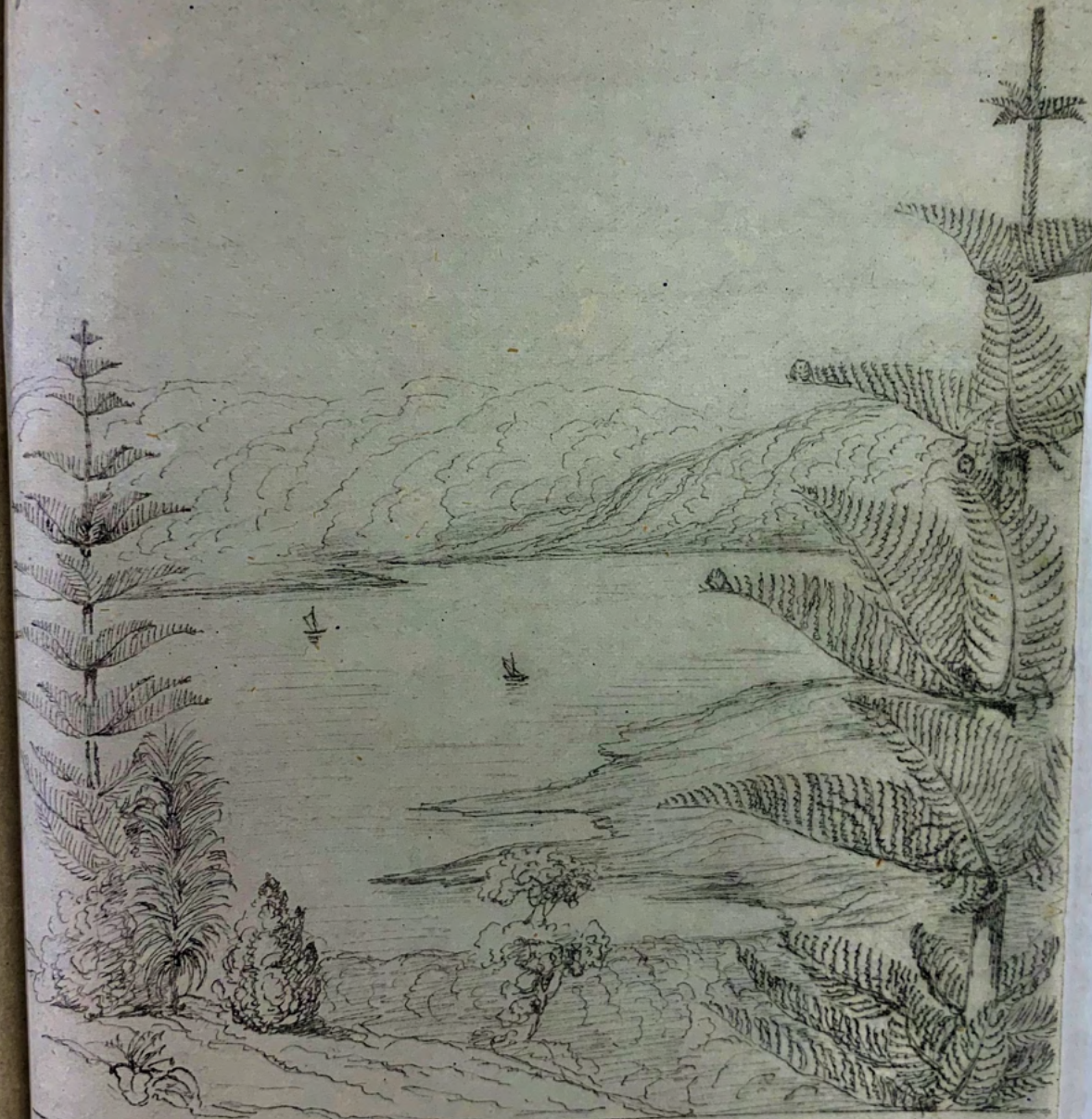
Ackworth  
School



*Loasa lateritia*  
Spec. -

Private  
Collection

Again visited the Botanic Garden & took a sketch of the  
Norfolk Island Pine. There is a striking tree in just bearing  
a few cones which are at the extremity of the branches upright.





Private  
Collection

**J. DICKINSON & Co.,**  
**FLORISTS,**

**SEEDSMEN, NURSERYMEN,**  
 AND  
**Ornamental Gardeners,**

**39, MURRAY STREET,**  
**HOBART TOWN,**

In soliciting the patronage of the public, respectfully intimate that every exertion on their part will be made to merit encouragement, and that orders entrusted to them will be executed with accuracy, punctuality and despatch.

J. D. & Co., always have on hand a very extensive collection of

**Choice Ornamental Plants**

in pots for Greenhouses, Halls, or Verandahs. Hardy Exotic ditto, for Shrubberies, Parterres, &c. &c.

An extensive collection of Forest and Fruit Trees; also, Quicks, Privet, Fuchsias, &c., for hedges.

Seed of culinary Vegetables, annual, biennial and perennial Flowers and ornamental Shrubs of the most recent importation.

A large and valuable stock of bulbous rooted and herbaceous Flowers.

**Tasmanian Plants and Seed**

carefully selected, and sent to every part of the world.

Greenhouses built, and Shrubberies, Orchards, Kitchen and Flower Gardens laid out and planted according to plans furnished by proprietors, or plans suggested to suit particular localities.

Seed and Plants exchanged.

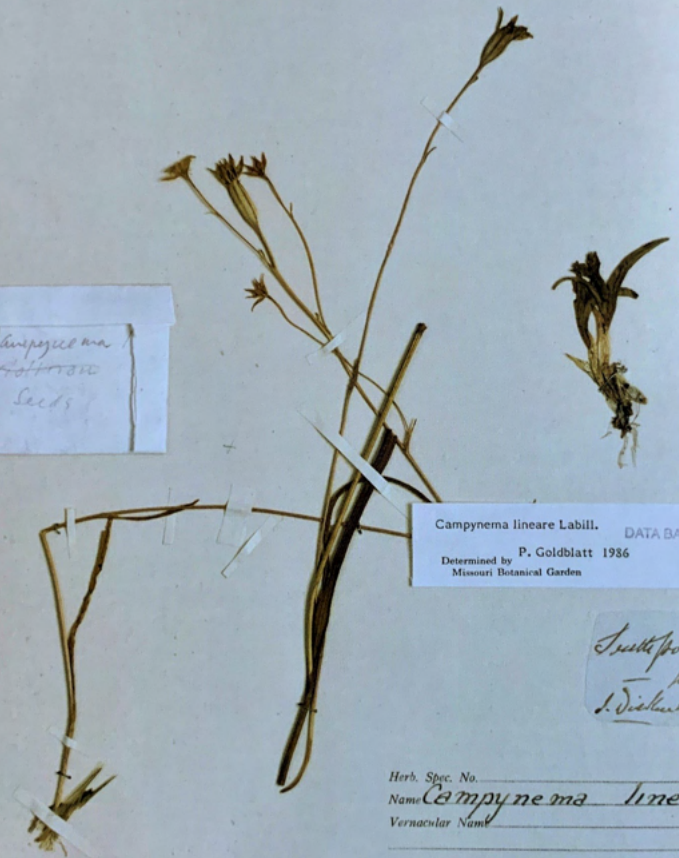
Undeniable reference as to capability and integrity.

AOT

119-18



Campynema  
lineare  
Seeds



Campynema lineare Labill. DATA BASED  
Determined by P. Goldblatt 1986  
Missouri Botanical Garden

Southport  
- per  
J. Dickson

Herb. Spec. No. 3  
Name: *Campynema lineare* Labill.  
Vernacular Name:

Description  
Tree, Shrub, Bush, Creeper, Herb

1331  
*Campynema lineare*  
Labill.

TASMANIAN HERBARIUM, Hobart HO 50087  
Flora of Tasmania South West Region  
LILIACEAE  
*Campynema lineare* Labill.  
Loc.: Southport  
Lat.: 43° 27' S Long.: 146° 58' E Coordinate precision: 2  
Grid Ref.: Alt.: m.  
Coll.: J. Dickson 1331 Date:  
Habitat:  
Habit:  
Notes: Ex Herb. Milligan. Collection date possibly c. 1840  
Det.: P. Goldblatt Year: 1986 Pivor: DATA BASED  
Type: Basionym



UTAS SPARC



ROBERTI BROWNII  
PRODROMUS  
FLORAE NOVAE-HOLLANDIAE  
ET  
INSULAE VAN - DIEMEN.

Exhibens  
characteres plantarum

quas

annis 1802—1805 per oras utriusque insulae collegit et descripsit Robertus Brown; insertis  
passim aliis speciebus auctori hucusque cognitis, seu evulgatis, seu ineditis, praesertim  
Banksianis, in primo itinere navarchi Cook detectis. Vol. I. Londini. Typis Richard Taylor  
et socii. Veneunt apud J. Johnson et socios in coemeterio sancti Pauli. 1810. 8.  
a pag. 145—595.

---

Veneunt a Redactione Isidis.

( 2 Thlr. )

AOT

Orthoceras.

Perianthium ringens, galea ovata, foliolis exterioribus anterioribus erectis, linearibus interioribus nanis, sessilibus, sub galeam conniventibus. Labellum trilidum, ealcaratum. Anthera signati parallela, utriusque lobo laterali columnae fissata.

Affinitate proxima Diuris: diversa perianthio magis ringenti, foliolis inferioribus arrectis, interioribus nanis conniventibus sessilibus. Bulbi indivisi.

O. strictum. (J.) v. v. Cryptostylis. Perianthium foliolis 5, linearibus, patulis. Labellum posticum, integrum, sessile, latius, basi concava columnam brevissimam occultante. Anthera signati parallela, lobo laterali columnae utriusque fissata.

Bulbi fasciculati. Folia radicalia plana, petiolata, pauca. Flores scapum vaginatum teretibus, spicati sordide rufi, inodori.

Obs. Genus ab omnibus aliis distinctum et a Malaxidi diversissimum.

1. longifolia, floribus arrectis, labello convexo margini-curvis: axi a basi apicis 3 elevatis desinentibus in pro-

2. ovata, floribus porrectis, labello convexo marginibus curvis: apicis infra medium laevi; juxta apicem pro-

3. erecta, floribus erectis labello supra concavo axeos ca-

Perianthium ringens, galea antica, foliolis duobus posticis ex-

labellum 2-lobum, indivisum ealcaratum, unguiculatum, columnam brevissimam occultante, lobis lateralibus membranaceis. Anthera signati parallela, utriusque lobo laterali columnae fissata.

Obs. Affinitate proxima Neottiae: diversa perianthio magis ringenti, foliolis inferioribus arrectis, interioribus nanis conniventibus sessilibus. Bulbi indivisi.

O. strictum. (J.) v. v. Cryptostylis. Perianthium foliolis 5, linearibus, patulis. Labellum posticum, integrum, sessile, latius, basi concava columnam brevissimam occultante. Anthera signati parallela, utriusque lobo laterali columnae utriusque fissata.

Bulbi fasciculati. Folia radicalia plana, petiolata, pauca. Flores scapum vaginatum teretibus, spicati sordide rufi, inodori.

Obs. Genus ab omnibus aliis distinctum et a Malaxidi diversissimum.

1. longifolia, floribus arrectis, labello convexo margini-curvis: axi a basi apicis 3 elevatis desinentibus in pro-

2. ovata, floribus porrectis, labello convexo marginibus curvis: apicis infra medium laevi; juxta apicem pro-

3. erecta, floribus erectis labello supra concavo axeos ca-

Perianthium ringens, galea antica, foliolis duobus posticis ex-

labellum 2-lobum, indivisum ealcaratum, unguiculatum, columnam brevissimam occultante, lobis lateralibus membranaceis. Anthera signati parallela, utriusque lobo laterali columnae fissata.

Obs. Affinitate proxima Neottiae: diversa perianthio magis ringenti, foliolis inferioribus arrectis, interioribus nanis conniventibus sessilibus. Bulbi indivisi.

O. strictum. (J.) v. v. Cryptostylis. Perianthium foliolis 5, linearibus, patulis. Labellum posticum, integrum, sessile, latius, basi concava columnam brevissimam occultante. Anthera signati parallela, utriusque lobo laterali columnae utriusque fissata.

Bulbi fasciculati. Folia radicalia plana, petiolata, pauca. Flores scapum vaginatum teretibus, spicati sordide rufi, inodori.

Obs. Genus ab omnibus aliis distinctum et a Malaxidi diversissimum.

1. longifolia, floribus arrectis, labello convexo margini-curvis: axi a basi apicis 3 elevatis desinentibus in pro-

2. ovata, floribus porrectis, labello convexo marginibus curvis: apicis infra medium laevi; juxta apicem pro-

3. erecta, floribus erectis labello supra concavo axeos ca-

denticulato marginibus brevissime ciliatis, columnae laciniis bifidis, antherae mucrone setaceo. (J.) v. v. P. fimbriatum, perianthii foliolis posticis infra approximatibus et juxta basin gibbosis: antico interioribusque ciliatis, labelli lamina longissime fimbriata, laciniis columnae bipartitis, antherae rostro elongato. (J.) v. v. flor. emarcidis.

Genopleium.

Perianthium ringens, galea antica, foliola postica longiora, patula; interiora infra columnae adnata. Labellum adscendens, indivisum, ealcaratum, basi cucullata. Columna semibifida, laciniis lateralibus nullis. Anthera signati parallela, persistens, loculis approximatis. Massae Pollinis.

Obs. Affinitate proximum Prasaphyllo quocum habitu convenit, diversum solummodo defectu laciniarum lateralium columnae, interioribusque perianthii ei adnatis.

G. Baueri. (J.) v. v. Obs. Character ex Icone D. Ferdinandi Baueri.

Neottia. Jacq. Sv. Perianthium ringens, foliolis lateralibus exterioribus antice labello imberbi subunguiculato suppositis; interioribus cum galea conniventibus. Anthera signati parallela.

Obs. Characterem c. Sv. in paucis mutavi, propter species nonnullas jam descriptas, aliasque ineditas in Herb. Banks. examini subjectas. Orchis strammatice L. fide specimenis in Herbario Hermanni Neottiae species est.

1. N. angustata, labello indiviso oblongo crispato: basi bilobulata, columnae lobulis lateralibus signate longioribus, spica tortili, foliis radicalibus lanceolatis, bulbis oblongis. (J.) v. v.

Calochilus. Perianthium ringens, foliolis lateralibus exterioribus labello suppositis; interioribus sessilibus, minoribus, erectis. Labellum longius, sessile, acuminatum, disco intus marginibusque barbato. Anthera signati parallela, persistens.

Herbae glabrae. Bulbi indivisi, nudi. Folia caulium pauca, infimum emarginatum, reliqua abbreviata. Spica racemosa, rufa, floribus porrectis, rufis majusculis.

Obs. Affinitate proximum Neottiae. 1. C. campystris, labello perianthio parum longiore: acumine semilanceolato lamina 5-plo breviora, columna basi biglandulosa, bracteis ovario superantibus, spica 4-8-flora. (J.) v. v.

2. C. voludefolius, labello perianthio duplo longiore: acumine biglanduloso, bracteis ovario brevioribus, spica 2-4-flora. (J.) v. v.

Sec. III. Monandrae. Anthera terminalis, persistens, loculis approximatis. Pollinis massae pulveraceae, e granulis dulciae affixae. Herbae Terrestres.

Perianthium ringens, foliolis lateralibus exterioribus sessilibus, labello supposito; interioribus subfimbriatis, adscendentibus. Labellum dissimile, oblongum, obtusum, basi callosa. Anthera membranacea utriusque aucta (unde nomen). Massae Pollinis utriusque loculi binae, pulveraceae, basi affixae signatis apice soluto.

Herbae glabrae. Bulbi indivisi, nudi. Folia caulium unum, fistulosum, teres, vagina longa. Spica multiflora.

Obs. Hue Hippocistis porrifolia Swartz, quae Ophrys unilobata Forsk.

Facies ab Epipactide longe recedit, et Prasaphyllo penitus convenit, sed floribus reclinatis (nuda acceptatione), et anterioribusque linearibus, perianthii foliolis inferioribus revolutis interioribus nudis; disco dimidii superioribus scalloso, spicae floribus omnibus approximatis. (J. M. T.) v. v.

2. M. rara, perianthii foliolis inferioribus revolutis interioribus nudis, disco incrassato marginibus nudis, spicae floribus inferioribus distantibus. (J.) v. v.

3. M. media, perianthii foliolis inferioribus revolutis interioribus nudis, disco incrassato marginibus nudis, spicae floribus inferioribus distantibus. (J.) v. v.

4. M. alba, perianthii foliolis inferioribus revolutis interioribus nudis, disco incrassato marginibus nudis, spicae floribus inferioribus distantibus. (J.) v. v.

5. M. pulchella, perianthii foliolis inferioribus ovali oblongis patentibus, galea orbiculato-ovata planiuscula, labelli dimidio inferiore parum dilatato retuso. (M.) v. v.

Perianthium subringens, foliolis lateralibus exterioribus sessilibus, labello supposito, interioribus minoribus, situ variis. Labellum dissimile, foliolis brevibus, indivisum, porrectum, basi bicallulatum, disco inappendiculato. Columna semiter-

ti, apice inapiculato. Anthera terminalis, persistens, lo-

AOT



Dessiné par L. Le Breton. Lithé par P. Blanchard .

Cide Editeur

Lith. de Thierry frères Paris.

JARDIN BOTANIQUE D'HOBART-TOWN .

(Ile Van Diemen)

P Blanchard

c. 1841

AOT



L11/B.285



Reverend, Very Distinguished Lord

London. 16 Oct. 1854..

My dear friends -  
 I have not as I intend this to go by the Fortitude what mail closes tomorrow it may  
 reach you a week or so before I arrive. I have engaged my passage in the "Canaan"  
 Capt Galbreath a fine 1100 ton ship - passage £63. - finding you own crew if you want  
 it.

I wrote you on the 3<sup>d</sup> thinking it would be my last before  
 I started but as I intend this to go by the Fortitude what mail closes tomorrow it may  
 reach you a week or so before I arrive. I have engaged my passage in the "Canaan"  
 Capt Galbreath a fine 1100 ton ship - passage £63. - finding you own crew if you want  
 it.

board between them, to buy Tolans - Grounder is a sharp looking Londoner, Watson is  
 rather a foot more of the Countryman - I have sent you all sorts of well done  
 fruit of which one the best or worst - I felt is such a relief seeing them safely  
 dispatched at Gravesend. Having advanced them money being doubtful if they  
 would come to hand - If you are not tired I will like Sister "the year's" continue  
 on the 5<sup>th</sup> I determined to take

board between them, to buy Tolans - Grounder is a sharp looking Londoner, Watson is  
 rather a foot more of the Countryman - I have sent you all sorts of well done  
 fruit of which one the best or worst - I felt is such a relief seeing them safely  
 dispatched at Gravesend. Having advanced them money being doubtful if they  
 would come to hand - If you are not tired I will like Sister "the year's" continue  
 on the 5<sup>th</sup> I determined to take  
 My friend the "Canaan" Capt Galbreath a fine honest & well Countryman

UTAS SPARC



GLOXINIA MACULATA.

Private  
Collection



*Private  
Collection*



BHL





NLA

FLORA'S GEMS:  
OR,  
THE TREASURES OF THE PARTERRE.

TWELVE BOUQUETS,  
DRAWN AND COLOURED FROM NATURE,  
BY JAMES ANDREWS.

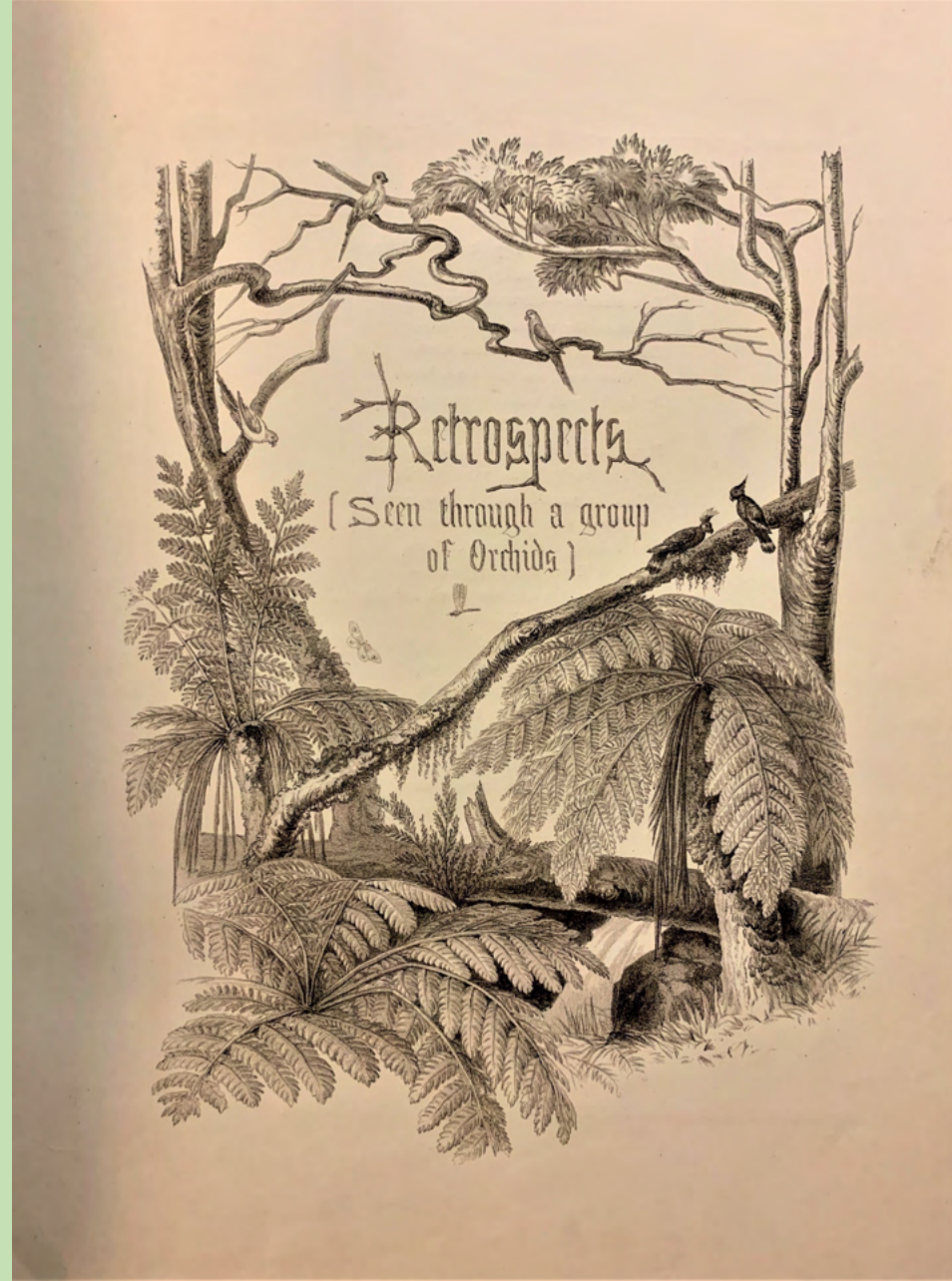
WITH  
POETICAL ILLUSTRATIONS,  
BY LOUISA ANNE TWAMLEY,

AUTHOR OF "THE ROMANCE OF NATURE," &c.

Oh! from the garden, Lady mine,  
Oh! wander there with me,  
While yet the early dew-drops shine  
On bud and leaf and tree.

I'll weave sweet flowers, Lady mine,  
In garlands for thy brow—  
Some are rich, and some are rare,  
But none so bright as thou!  
Old Song.

LONDON:  
CHARLES TILT, FLEET STREET.



UTAS SPARC



TMAG



UTAS SPARC

114



C.P.M.

Mother - 1867

UTAS SPARC



TMAG