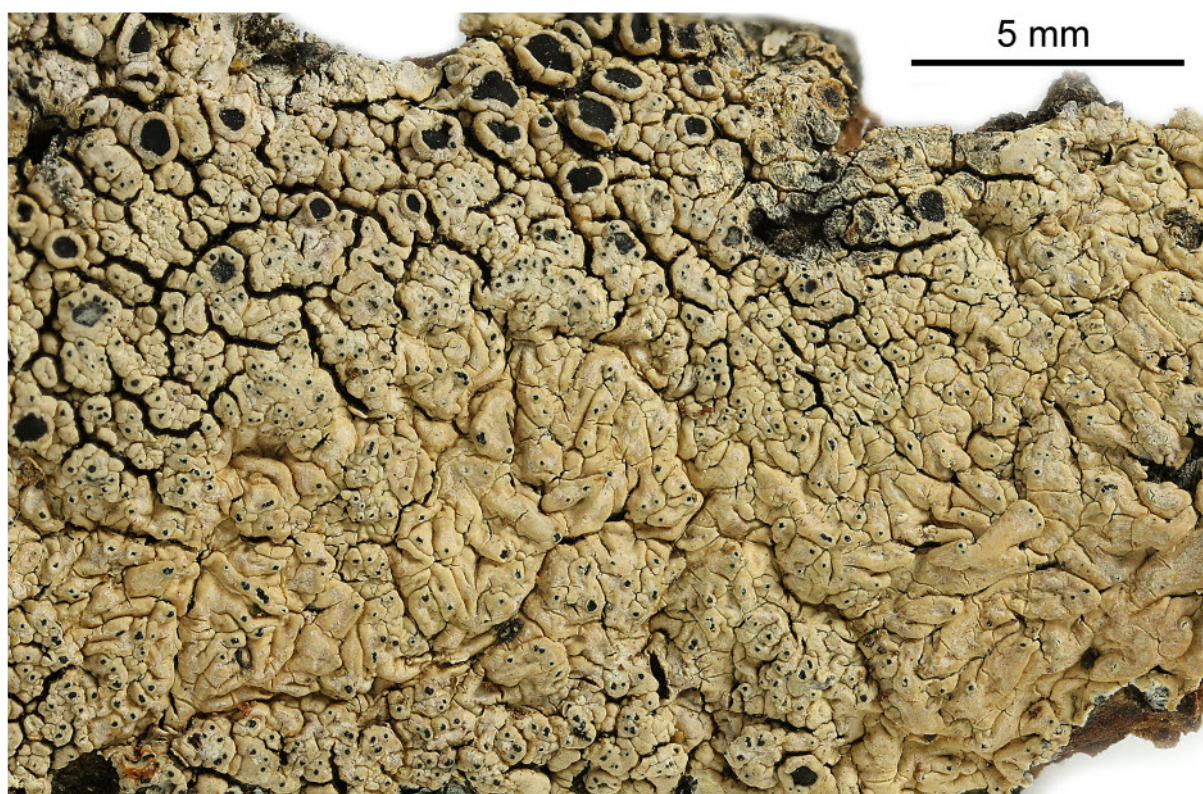


Dirinaria confluens (Fr.) D.D.Awasthi

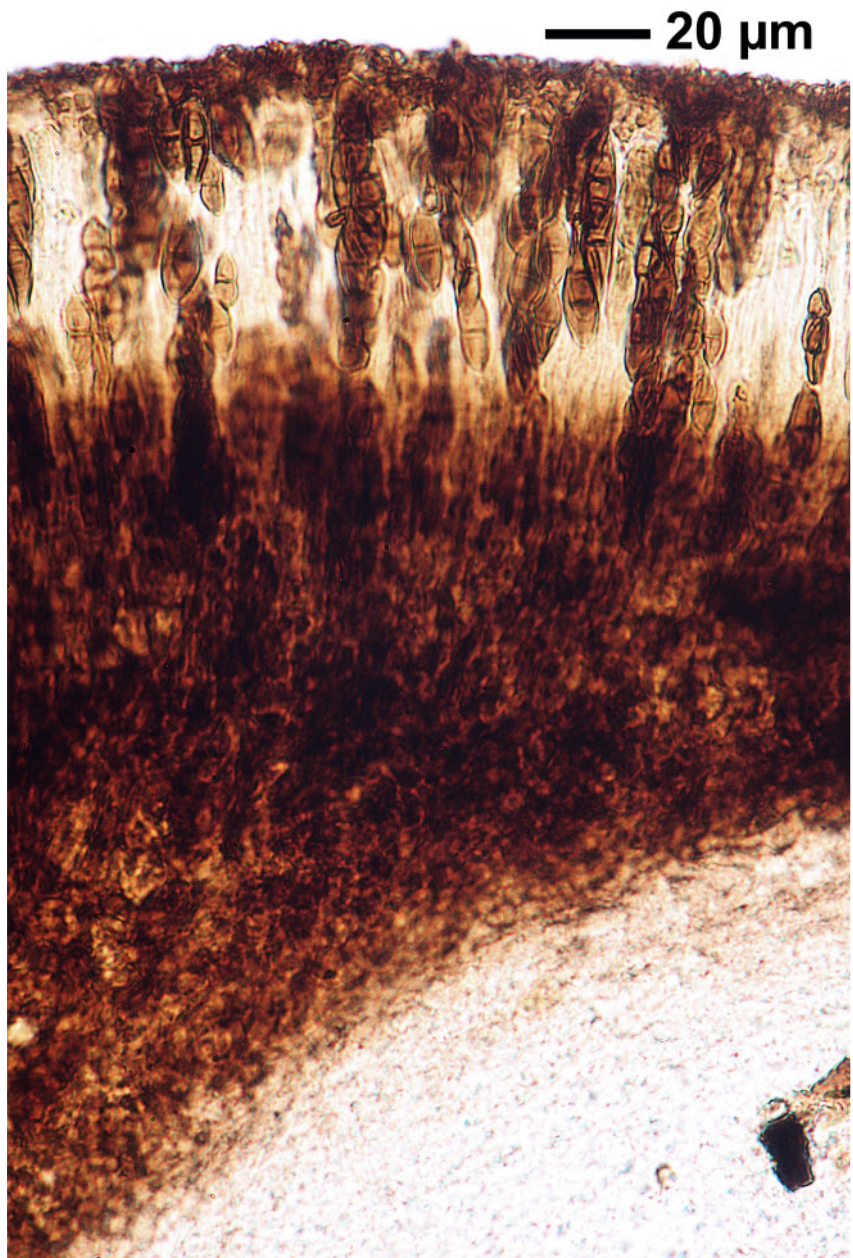
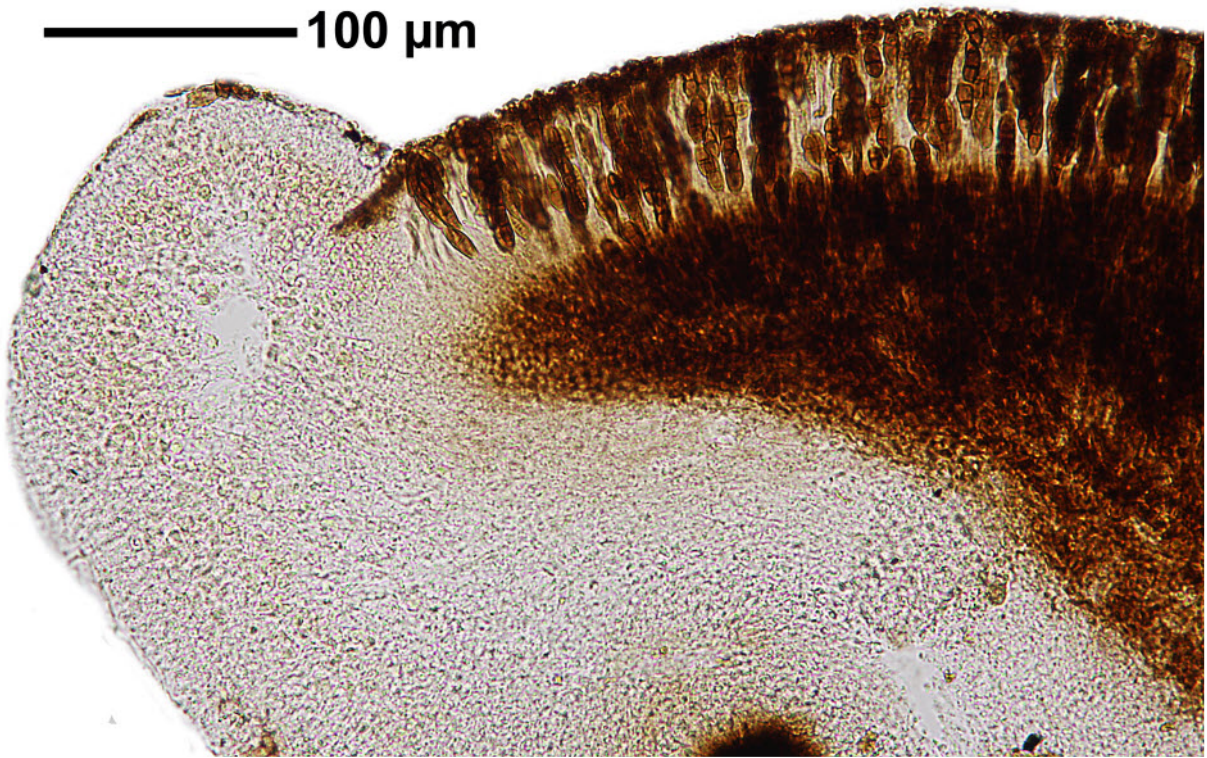
Thallus lacking vegetative propagules. Lower surface black. Medulla mostly white, lower medulla occasionally orange. Apothecial disc black, epruinose or weakly grey-pruinose. Hymenium colourless to pale yellow, 80-110 μm high. Hypothecium dark brown. Spores 14.5-17(-24) x 5-7(-10) μm . Chemistry: Cortex K+ yellow, C-, KC-, P+ yellow, UV-; medulla K-, C-, KC-, P-; atranorin (major), divaricatic acid (major), 3 β -acetoxyhopane-1 β ,22-diol, \pm unknown terpenes.

[5782], Madagascar, South-Madagascar, Berenti Park, on tree trunk, c. 100 m. Leg. F. Schumm 28.12.1992, det. F. Schumm 22.06.2000.

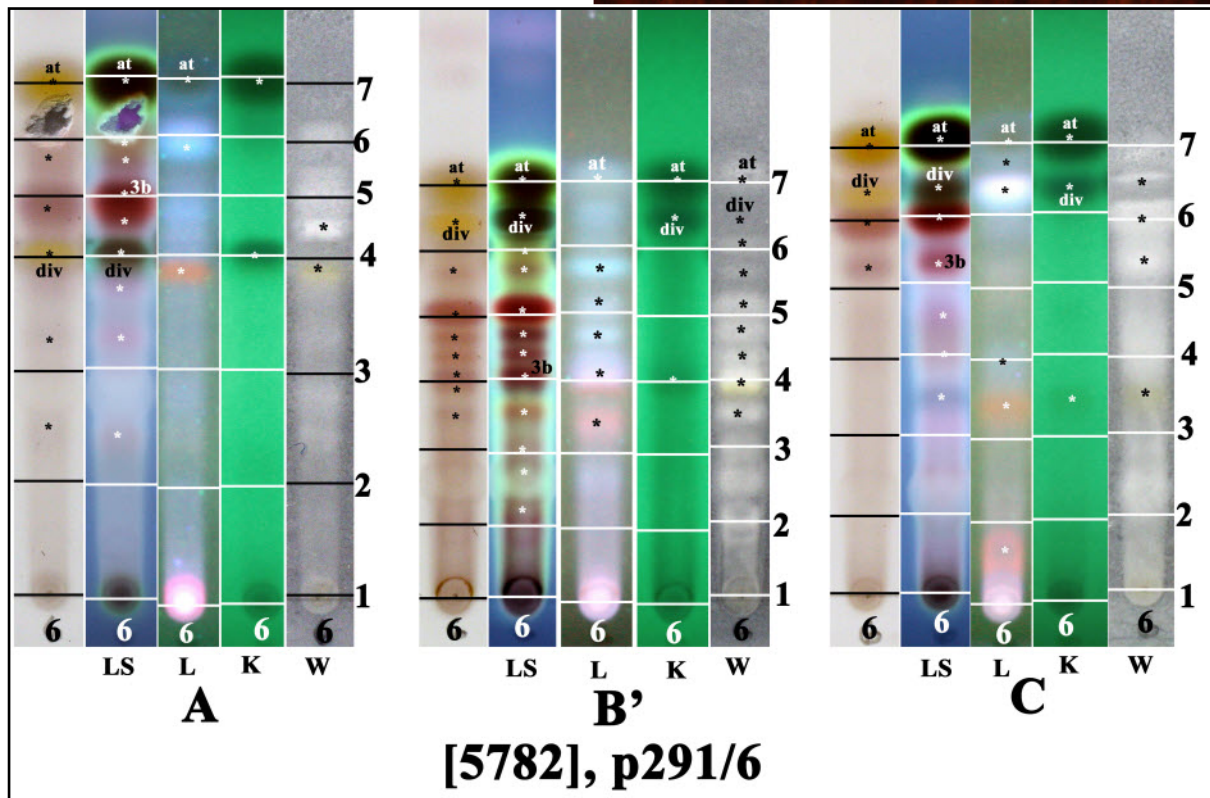




Dirinaria confluens



Dirinaria confluens



at: atranorin, div: divaricatic acid, 3b: 3β-acetoxyhopane-1β,22-diol, ± unknown terpenes

Dirinaria confluens