

## NEOs™ T24/T48 2U/4U Tape Libraries



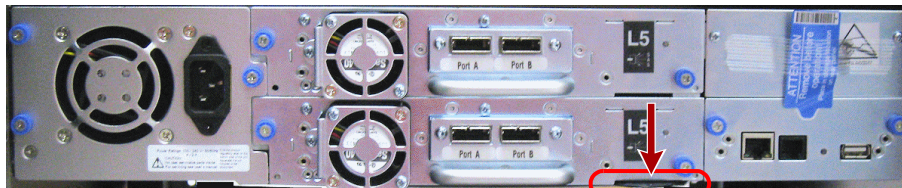
### Step 1

It is **essential** that you activate your warranty. Technical and warranty support are **not available** until the warranty is active:

1. Go to <http://www.overlandstorage.com/> and select **Service & Support > My Products**.
2. At the **Site Login**, enter your **e-mail address** and **password**, and click **GO**.
3. Click **Register New Product**.
4. Fill in the information (including serial number) and click **Submit**.

|   |                                      |
|---|--------------------------------------|
| E-mail:   | <input type="text" value="Enter"/>   |
| Password:   | <input type="text" value="Enter"/>   |
|   | <input type="checkbox"/> Remember Me |
| <input type="button" value="GO"/>                                 |                                      |
| <a href="#">Forgot your password?</a> <a href="#">New member?</a> |                                      |

The serial number is located on the pull-out tab at the rear.



Enter only the core characters skipping the parenthesis, "PN:", and "SN:" components.

**Example:** 11S00V7150Y1N1B78X9938



*NOTE:* You'll receive a confirmation e-mail from Overland with instructions on how to complete the registration process.

### Step 2

**WARNING:** Due to the weight of the appliance, it is recommended that at least two people be used to lift the unit out of the box to prevent injury.

**WARNING:** Um Verletzungen zu vermeiden, empfehlen wir aufgrund des Gewichts des Geräts, dass mindestens zwei Personen das Gerät aus der Verpackung heben.

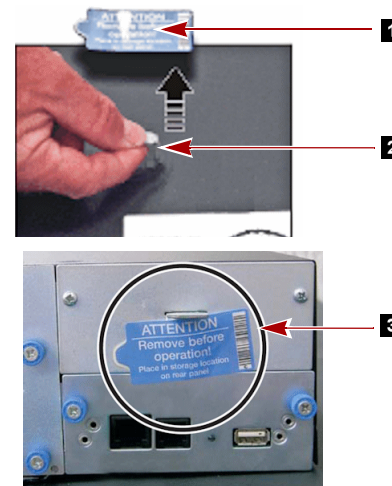
**AVERTISSEMENT:** En raison du poids de l'appareil, il est recommandé d'utiliser deux personnes au moins pour soulever l'appareil hors de la boîte pour éviter les blessures.

**IMPORTANT:** The shipping lock, which prevents the library accessor from moving during shipment, **must be removed** before the library is powered ON.

*NOTE:* If the temperature in the room where the library will be installed varies by 15° C (30° F) from the room where the library was stored, allow the library to acclimate to the surrounding environment for at least 12 hours before unpacking it.

The shipping lock is held in place with a label and is located in the top center of the library. After the shipping lock is removed, store it on the right side of the back panel for future use.

1. Using two people, remove the **library** from its box and set it on a secure surface.
2. Remove blue securing label (1).
3. Lift and remove the **shipping lock** (2).
4. Store the shipping lock and blue label at the top right (3) of the rear panel of the library. Slide the lock into the slot with the bottom of the lock showing below the slot. Press the label over the flat part of the lock.



### Step 3

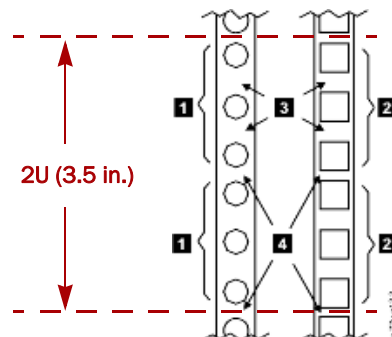
The NEOs T24/T48 libraries each come with a rack shelf kit for easy installation and securing of the library into a 19-inch (EIA-310) rack.

**IMPORTANT:** Two-post telco-style or other racks less than 29 inches in depth will NOT support this unit.

#### Install the Rack Rails

1. Determine the location in your rack for your library to be installed and, using a pencil, mark the location on each vertical rail in your rack.

*NOTE:* A 2U library requires 2U (3.5 in.) of rack space. A 4U library requires 4U (7 in.) of rack space.

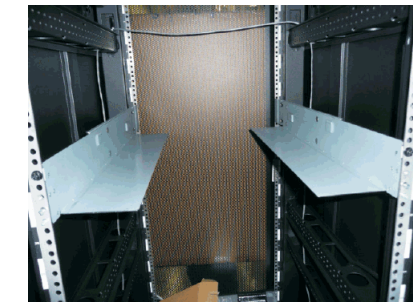


- 1 & 2 Two EIA units (2U) needed for round hole and square hole rail installation
- 3 Wide Gaps within the EIA unit
- 4 Narrow Gaps between EIA units

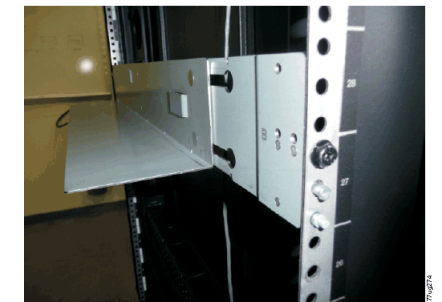
2. Ensuring that the flange on each rail points toward each other to form a shelf, secure one rail to **each side** of the rack in your chosen rack location:

*NOTE:* Use the screws for your rack type (labeled for round holes or square holes) and a #2 Phillips screwdriver to install the rails.

- a. **Extend the rails** to fit your particular rack depth.  
The two alignment pins go into the first and second holes from the bottom of the 2U space. The extension sections should be at the rear.
- b. With the large **black screws**, secure the front and back of each rail to the rack.  
The screw securing the rack goes into the fourth hole from the bottom in the front and the middle hole in the rear.



Front View



Rear View

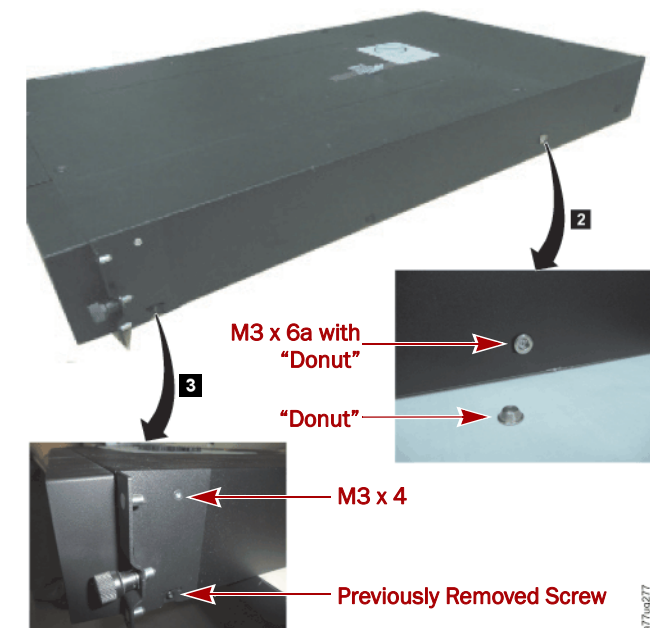
*NOTE:* The rails must be fastened with the bottom of the each rail parallel to floor and at the same level.

#### Attach the Rail Brackets

1. Using a Torx T10 screwdriver, remove the two screws (1) noted from both sides of the library.  
Screw locations on the 4U library are similar.



2. Install the library rack anchor "donuts" (2) on each side of your library using the M3 x 6 counter-sunk screws included in the rack kit.





3. Install the library mounting brackets (3) as shown on each side of the 2U library using the screw that was removed from your library and an additional M3 x 4 counter-sunk screw included in the rack kit.

The 4U rack anchors and mounting brackets are similar.

## Insert the Library in Rack

**WARNING:** It is recommended that a mechanical lifter (or at least two people) be used to raise and align the unit to prevent injury during installation. Use care when inserting or removing a unit into or out of a rack to prevent the accidental tipping of the rack, causing damage or personal injury.

**WARNUNG:** Um Verletzungen zu vermeiden, empfehlen wir zur Rack-Installation oder -Deinstallation die Nutzung einer mechanischen Hebehilfe (oder mindestens zwei Personen). Seien Sie vorsichtig bei der Rack-Installation oder -Entnahme, um ein versehentliches Kippen des Racks zu vermeiden und das Rack nicht zu beschädigen bzw. sich selbst zu verletzen.

**AVERTISSEMENT:** Afin d'éviter des blessures pendant l'installation, il est recommandé d'utiliser un monte-charge (ou au moins deux personnes) pour élever ou aligner l'appareil. Faites attention lorsque vous insérez ou retirez l'appareil d'un support, pour empêcher le déversement accidentel de la crémaillère causant des dommages et des blessures.

1. Using the mechanical lifter, position the **library** in front of the rack, aligned with the rails.
2. Slide the library onto the **rails** until the mounting brackets are up against the vertical rack rails.  
The "donuts" on the side of the library should be under the side bump-out slots at the rear of the rails.
3. Secure it to the rack with the **captive screws**.

## Step 4

**WARNING:** To reduce the risk of electric shock or damage to equipment, always remove any power cords while working with the unit.

**WARNUNG:** Um das Risiko eines elektrischen Schlags oder Schäden am Gerät zu vermeiden, ziehen Sie stets den Netzstecker, bevor Sie an der Einheit arbeiten.

**AVERTISSEMENT:** Pour réduire le risque de choc électrique ou endommagement de l'équipement, retirez toujours les cordons électriques en travaillant avec l'appareil.

The NEOs T24/T48 libraries are expandable and accept add-on components to enhance performance:

- Additional tape drives can be installed in the empty bays. On the NEOs T48, always install the drives from the bottom up.
- Redundant (second) power supply is available for the NEOs T48.

Once the library is secure in the rack, the additional items should then be installed before hooking up the system. Follow the instructions enclosed with each component.

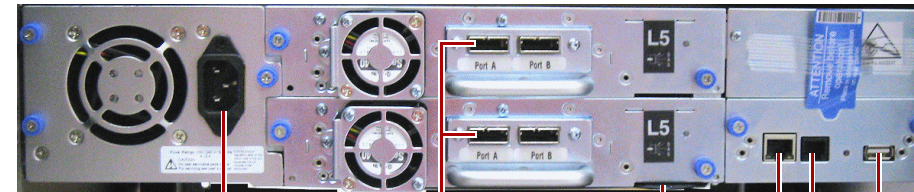
## Step 5

### Cable Attachment

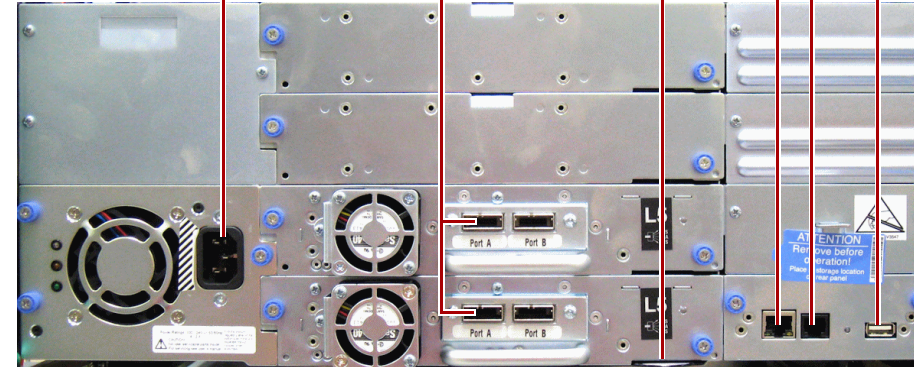
**CAUTION:** It is recommended that you shut down and turn OFF the associated server. Turn OFF all attached devices. Remove the power cables from the server and all attached accessories. Failure to remove the power cords from these devices before connecting the host interface cable could result in damage to the library.

All cabling, power connections, and cooling are located on the NEOs rear panel.

NEOs T24 Library



NEOs T48 Library



- |                     |                      |                    |
|---------------------|----------------------|--------------------|
| 1 - AC Power Socket | 3 - S/N Pull-out Tab | 5 - Serial Port    |
| 2 - SAS HBA Ports   | 4 - Ethernet Port    | 6 - USB Connection |

1. Attach one end of the **host interface cable** to the library:
  - For a Serial Attached SCSI (SAS) connected library, attach one end of the SAS cable to Port A (left) SAS HBA (2) on the drive.
  - For a Fibre Channel (FC) library, attach one end of the fibre cable to Port 0 (left) connector on the drive (not shown).
2. Attach the **other end** of the host interface cable as follows:
  - For a SAS library, connect the host interface cable to the host HBA, using a direct SFF-8088 connection, or an interposer as required. Unused SAS connectors do not need termination.
  - For a Fibre Channel library, connect the fibre cable to the host or to a switch.
3. Plug the **network Ethernet (management) cable** into the Ethernet port on the back panel of the library. If the Ethernet connection is directly attached to a server or laptop, a crossover Ethernet cable may be required.

**NOTE:** It is the customer's responsibility to supply the crossover cable if one is required.

## Step 6

### User Guides

For detailed information on configuring your NEOs T24 or T48, refer to the *NEOs T24/T48 User Guide* available online at:

<http://docs.overlandstorage.com/neo>



### Warranty and Technical Support

For warranty and general technical support information, see our **Contact Us** web page:

<http://www.overlandstorage.com/company/contact-us/index.aspx>

For information on contacting Overland Technical Support, see our **Contact Support** web page:

<http://docs.overlandstorage.com/support>

