

KEY TO ASCOCORYNE

H.O. Baral, Oct. 2000

Species of *Ascocoryne* are often believed to be difficult to identify. However, with living fresh specimens the c. 4 European taxa are rather easily distinguished.

Highly constant among the many studied fresh collections proved the lipid pattern (multiguttulate versus 2(-4) very large and several small LBs) in the mature (aseptate) ascospores which readily allows to recognize the two sections (*cylichnium* vs. *sarcooides*). The immature spores, however, contain many small LBs (multiguttulate) in both sections. Due to strong coalescence in dead material, this striking difference is exclusively constant in living material and should especially be examined from spores within living asci. The two sections can further be distinguished by the consistency of the apothecia (distribution and abundance of gel), the presence of crystals, by the presence of conidiomata, and by the type of spore germination. Only the latter two features have so far been used in the literature. The genus is somewhat variable concerning paraphysis shape and content, spore size and shape, and ascus size. No differences between the species could be found in the type of apical apparatus.

Spore germination: Ascospores are always aseptate and with high lipid content within the living mature asci. Both formation of septa and germination (including budding) occur only in overmature spores. Overmature spores are those which have undergone post-maturation either outside the asci after active discharge, or within dead asci which have not managed spore discharge. Thus conidia are never forcibly ejected and cannot be termed ascoconidia as is frequently done in this genus, and apothecia in optimal developmental state may completely be devoid of septate spores and conidia. In order to obtain germinating spores and conidia in great abundance, apothecia are kept in a moist box for some days or weeks (at 10-20°).

In contrast to this, overmature material of *A. sarcooides* may contain some or many living asci with overmature spores (with 1-septum and c. 5-15 µm long germ tubes, partly as conidia in chains). This situation is clearly unphysiological, and effective spore discharge seems most unlikely with such germ tubes.

The purplish-violet pigment stains the medium distinctly blood-red when adding KOH (*cylichnium*).

Ascocoryne-*Serpula*-Sukzessionsphase (Winterhoff 2001: 143) wohl auf *cylichnium* bezogen.

KEY

1. Living mature ascospores constantly with 2(-4) large, symmetrically arranged LBs (2-)2.5-4(-4.7) µm diam. among many small ones; overmature with (0-)1-3 septa, producing either normal germ tubes or moniliform chains of limoniform to terminally ± globose conidia that remain cohering (blastocatenate), [solitaria not?!!]; often associated with sessile or clavate-stipitate to cerebriform conidiomata; whole medulla strongly gelatinized (apothecia therefore highly gelatinous-elastic), composed of very narrow hyphae (*1-4(-6) µm wide), intercellular space very wide, filled with gel, subhymenium non-gelatinized; complete apothecium without crystals .. *Sectio Sarcooides*

1. Living mature ascospores constantly multiguttulate (mixture of many small and medium-sized LBs, the latter 1-2(-2.7) μm diam.; overmature with (1-)3-5(-6)-septa, producing in abundance subglobose(-ellipsoid) phialoconidia on extremely short phialides (0.2-1.2 x 0.6 μm) directly on the ascospore, sometimes also on germ tubes, conidia soon detaching, never cohering; never producing conidiomata; medulla non-gelatinized or at best outer layer (c. 100-200 μm) medium gelatinized (apothecia therefore only slightly gelatinous), composed of rather thick hyphae (*?8-12 μm wide) with rather narrow intercellular space, subhymenium gelatinized **or ?not**, with abundant crystals and druses throughout the medulla .. **Sectio Cylichnium**

	sectio sarcoides	sectio cylichnium
Conidia on ascospores	conidia forming chains of firmly cohering cells, conidia produced terminally (blastoconidiate*)	conidia not forming chains, conidia produced directly on the ascospore ends
LBs in ascospores	two large and many small	many small
Crystals in medulla	absent	present

*fide Kendrick & Carmichael (?1973)

Sectio Sarcoides

1. Hymenium **light greyish-reddish-brown** with carneo-violet tint, (1-)2-6(-12) mm diam., with rather long, conical stalk; spores *(11-)14-17(-19) x 4.2-4.5(-4.8) μm , with 2(-4) large LBs 1.5-2.5(-3) μm diam., overmature 0-1-septate, germ tubes **not moniliform**; asci IKI BB; apices of paraphyses cylindrical to medium clavate, *(1.5-)2.5-4.5 μm , upper 8-30 μm medium refractive multiguttulate, conidiomata (*Coryne albida*) **stipitate-capitate**, c. **1-3 x mm**, singly but gregarious, **pale flesh-coloured**, cells of conidiophore medium to strongly **inflated (bulb/onion-shaped to globose)**, containing a **refractive KOH-soluble crystal**, conidia *3-3.5 x 1-1.2 μm , slightly to medium allantoid, 1 minute LB in each end; medullary hyphae sometimes multiguttulate; on wood of stems and branches of *Fagus*, *Quercus*, *Betula*, *Carpinus*, on cones of *Pinus* (only anamorph), slightly to strongly rotten, in shady, humid woods, e.g. in creeks .. **A. solitaria**

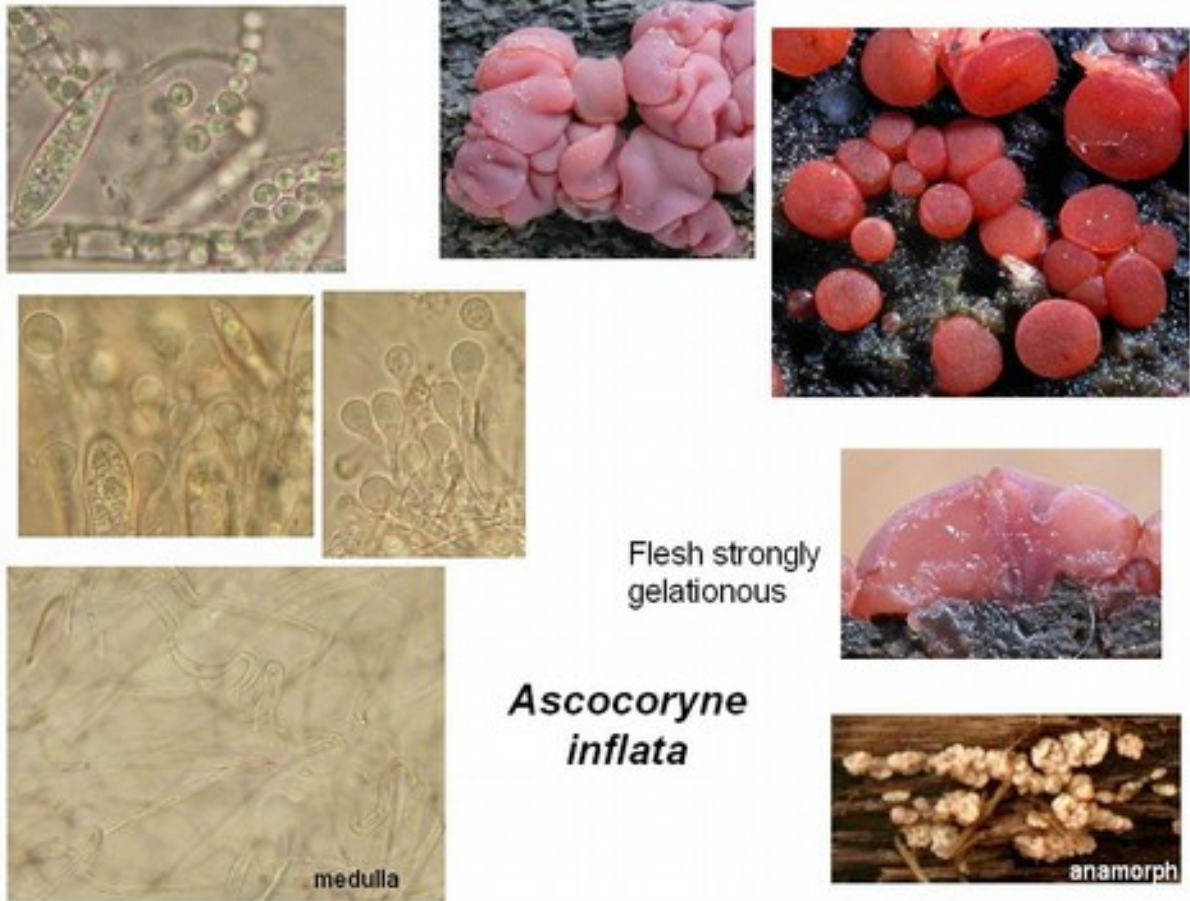
1. Hymenium **deep red-purple-violet**, 1-30 mm diam., sessile to rather long-stalked, ascospores overmature mainly 1-3-septate, germ tubes **strongly moniliform** (chains of cohering conidia), conidiomata absent (?or cushion-shaped) or **clavate or flabelliform-cerebriform**, conidiophores **narrowly fusoid to cylindrical, without plasmatic crystals** .. 1.5

1.5 Medulla with large globose cells, ascospores *(11.4-)13.5-18.6 x 4.8-6 μm , ends obtuse, conidia on spores *3.2-6 x 2.1-3.4 μm , apoth. 18-44 mm diam., sessile, never with associated conidiomata, on *Alnus*, *Fagus*, *Fraxinus*, Croatia .. **A. cerebriformis** Matocec sp. nov.

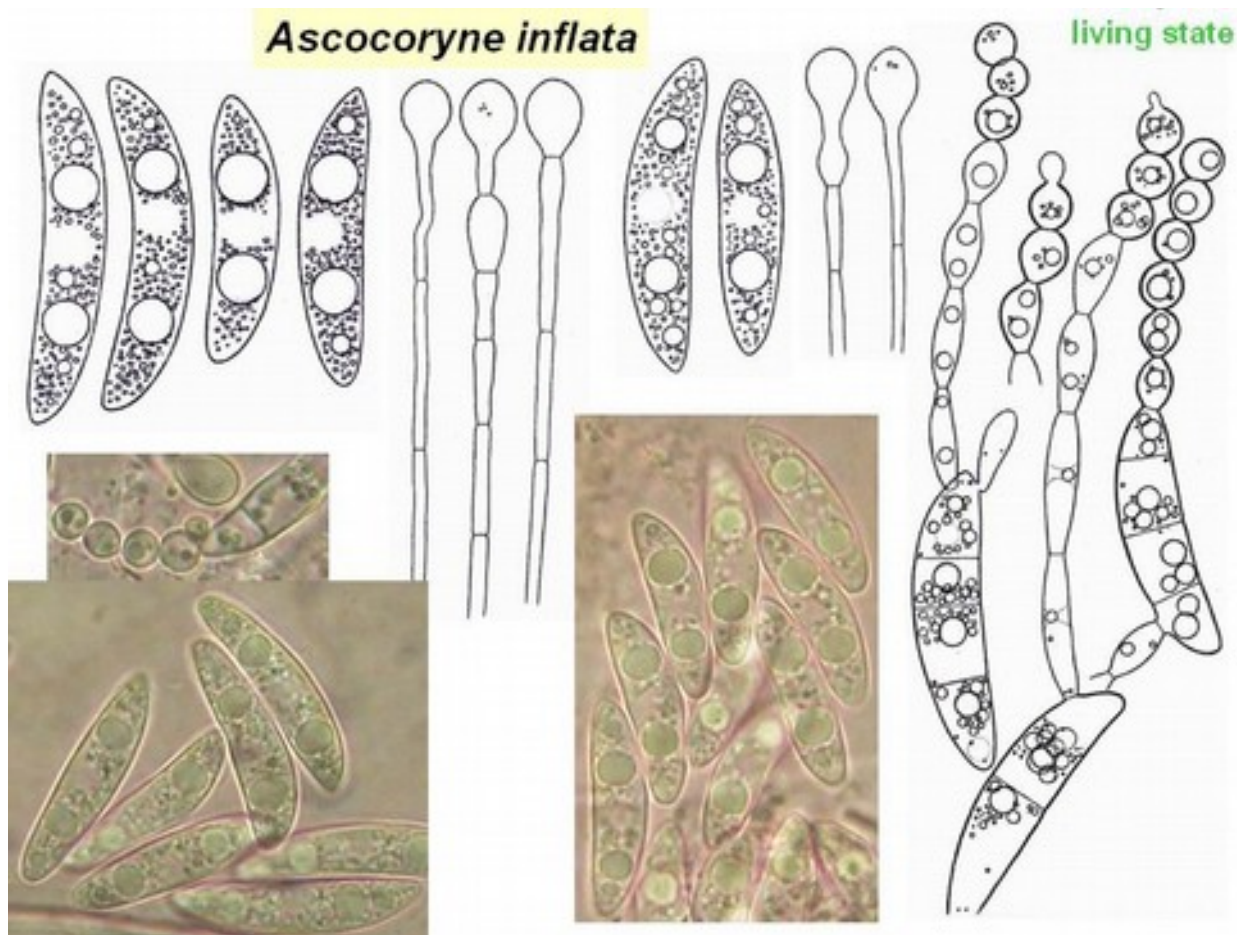
1.5 Medulla without globose cells .. 2

2. Ascospores with obtuse to subacute ends, *(14-)17-26(-29) x (4.4-)4.7-5.5(-6) μm , terminal conidia on germ tubes globose, *2.8-3.5(-4.3) μm wide; paraphyses strongly to very strongly capitate, never **guttulate**, apothecia 1-10 mm diam., 1-5 mm thick, cushion-shaped to obconical, broadly sessile, margin often \pm appressed to substrate, sometimes associated with small conidiomata (0.5-1 mm high, irregularly cerebriform, pale rosaceous-purpuraceous,

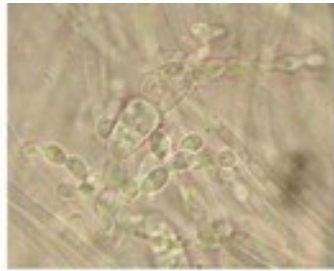
non-gelatinous) (phialides *10-15/1.8 μm, conidia *4-4.5 x 1 μm, medium allantoid); on very rotten wood or bark of fallen branches or trunks of *Carpinus*, *Fraxinus*, *Fagus*, *Alnus*, *Acer*, shady woods, creeks or Alnetum .. *A. inflata* (formerly *disciformis*) sp. nov.
 HB 3121, 6772, 6788a, 6810, 6838, 7059, 7598



Medulla of highly gelatinized *t. intricata*, ascospores producing globose conidia in chains



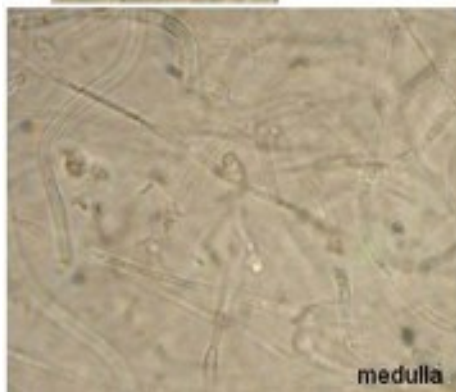
2. Ascospores with constantly \pm obtuse ends, $*(11-14-21(-24))(-26) \times (3.8-4.4-5.2(-5.5)) \mu\text{m}$, terminal conidia on germ tubes lemon-shaped, $*2.2-2.5(-2.8) \mu\text{m}$ wide; paraphyses slightly to medium (eventually also strongly) inflated, young strongly refractive multiguttulate, later with a few large VBs; apothecia 3-30 mm diam., c. 4-13 mm thick, obconical-turbinate, with a \pm conspicuous stalk (not rarely higher than wide), margin **never appressed to substrate**, nearly always associated with rather large conidiomata (stipitate, clavate to flabelliform-cerebriform without delimited head, c. (2.5-)5-15 \times 1-5(-15) mm, often fasciculate, deep purplish-violet, phialides $*9-15(-20) \times 1.3-1.5 \mu\text{m}$, conidia $*(2.8-3.3-5.5 \times 1-1.4 \mu\text{m}$, slightly (to medium) allantoid, 1 minute LB (or 0.6-0.8 μm) near each end, some with small polar appendage so that conidia at first loosely cohere in chains); on wood or bark of branches, trunks and stumps of *Fagus*, *Quercus*, *Alnus*, *Prunus*, *Tilia*, *Carpinus*, *Castanea*, *Acer*, *Pinus*, *Larix* (never on *Picea*?), often undecayed or only slightly rotten (rarely strongly rotten), sometimes in dense mats of *Hypnum*, in creeks or shady woods, **?slightly xerotolerant**
 .. *A. sarcoides*



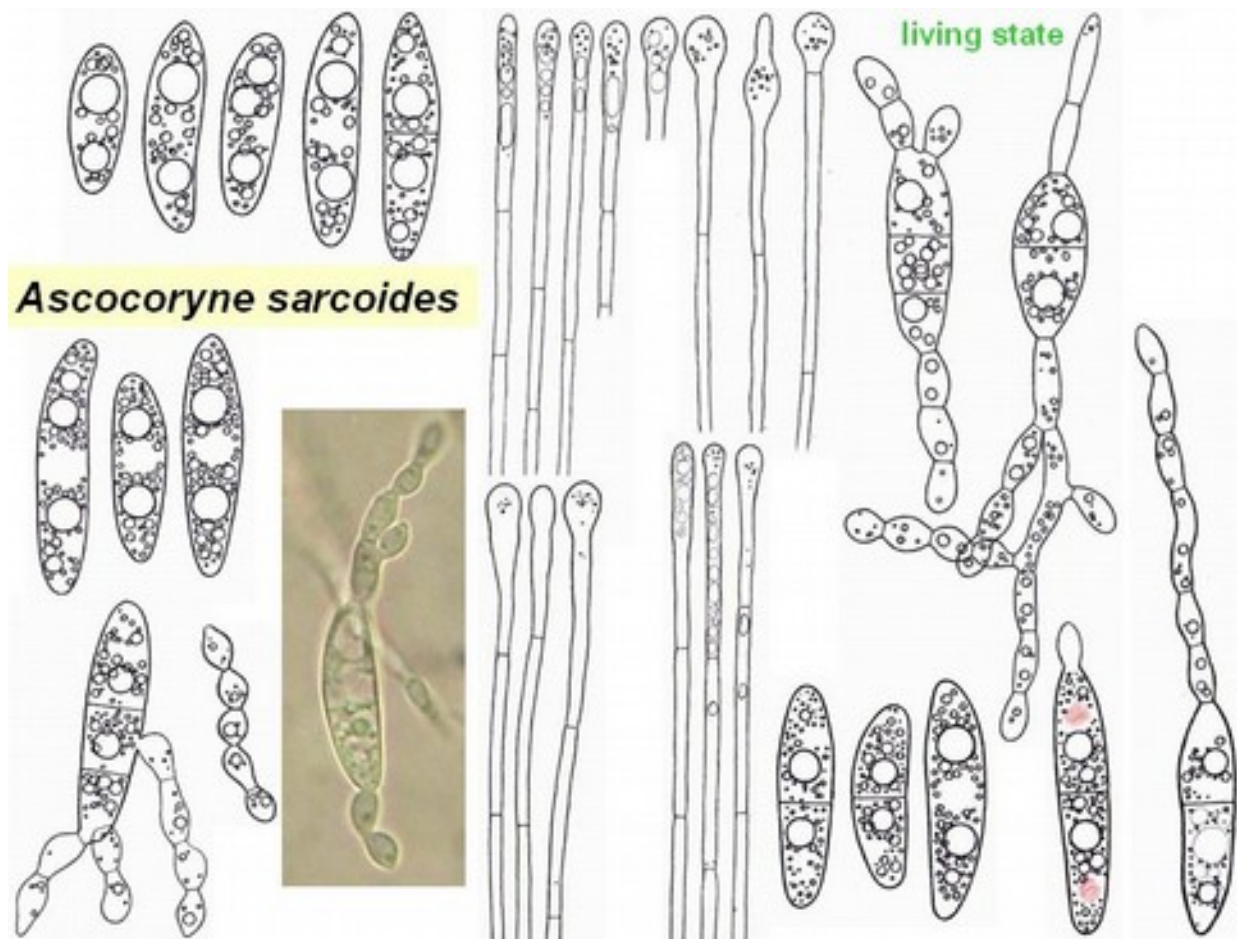
Ascocoryne sarcoides



Flesh strongly gelatinous



Medulla of highly gelatinized *t. intricata*, ascospores producing lemon-shaped conidia in chains



Sectio cyllichnium

1. Spores ***16-20(-22)** x 4.4-5 μm , subfusoid, **2 LBs 1.8-2.3 μm & 2 LBs 1-1.8 μm** among \pm many small ones (intermediate sizes frequent), overmature **(1-)3-septate**, conidia on spores *2-3 x 2-2.4 μm , with 1 large LB, sometimes also on long germ tubes (rarely as chains!); medullary hyphae below hymenium +**2-4.5 μm wide, in distinct gel, no crystals**; paraphyses around ascogenous hyphae **non-gelatinized???**; asci *175-222 x 9.3-10.5 μm , arising from croziers; apices of paraphyses cylindrical, */2-2.4 μm , with elongate VBs; apothecia 2-5.5 mm diam.; conidiomata ?slimy mass near apothecia, phialides *13-15 x 1.8-2.5 μm , conidia *2.5-3 x 1.3 μm , \pm straight, on wood of branch of *Picea*, very rotten .. ***A. conifericola* sp. nov.?**

HB 4248 (Nürtingen)

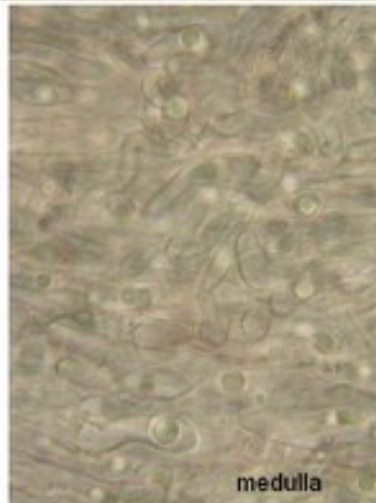
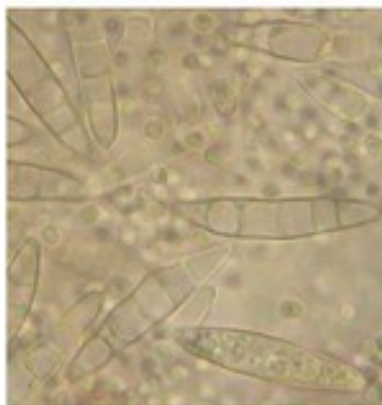
1. Spores **(19-)22-30(-35)** x **(4.2-)5-6(-7)** μm , always \pm fusoid, **overmature 3- or 4-5(-6)-septate**, inner medulla (500-1000 μm) of rather **dense texture of wide hyphae (*5-12 (-17.5) μm)** embedded in **little non-refractive gel**, pale purpuraceous, nearly always with **abundant crystals and druses** (hyaline or pupuraceous, mainly below subhymenium), paraphyses around ascogenous hyphae **mostly gelatinized**, asci *10.5-14.6 μm wide .. 2

2. Spores (20-)24-29(-33) x (4.2-)5.2-5.6 μm , large LBs in spores **1-2(-2.7) μm diam.**, spores overmature mainly 3-, also 4-5-septate, paraphyses slightly clavate, with \pm large 1-2 refr. VBs, asci *208-230 x 11.3-12.3 μm , with croziers, on coniferous wood, e.g. in creeks, in cluture **only subglobose conidia .. *A. "Evi"***

2. Spores of same size, large LBs in ascospores 1-1.5 (-1.8) μm diam., overmature (3-4-)5(-6)-septate, in culture **both allantoid and subglobose conidia** produced.. 3

3. Asci arising from **simple septa** (always with **basal downward protuberance**); conidia 2.5-3 x 1.9-2.3 μm , with 1 large and/or several \pm small LBs; paraphyses slightly to medium (-strongly) capitate/clavate, upper cell *33-60 x 2.8-4 or 4-5.3 μm , upper 6-27 μm (2-3refractive) multiguttulate; **SCBs?**; apothecia 1.5-20 mm diam., 1-5mm tall; on wood of branches of *Alnus*, *Fagus*, *Picea*, ?*Carpinus*, colline & montane, mostly in humid woods, e.g. creeks .. ***A. cylichnium* var. *deuncinata* var. nov.**
HB 4253, 6255a, 4340, 6793, 6791, 6800b, 6839.

3. Asci arising from **croziers**; conidia *(1.9-)2.3-3(-4.5) x (1.5-)1.7-2.2(-2.4) μm , either 4-8 small LBs or 1 large; paraphyses not or only slightly clavate, upper cell 21-35 x 1.7-3.5 μm , upper 8-24 μm 1-2refr. multiguttulate; medullary hyphoid cells with large, refractive, globose or sometimes elongate SCBs (2-5 μm) ?near margin; apothecia 4-22 mm diam.; on wood of stems, stumps or branches of *Fagus*, *Salix*, *Carpinus*, *Fraxinus*, *Quercus*, *Populus*, also not rarely on *Abies*, *Picea*, *Pinus*, little to strongly rotten, in shady humid woods, especially in creeks .. ***A. cylichnium* var. *cylichnium***



Ascocoryne cylichnium



Flesh cartilaginous (only slightly gelatinous)

Medulla of little gelatinized t. porrecta, cells containing large refractive globose SCBs. Crystals and druses of calcium oxalate present in medulla. Ascospores producing ovoid-subglobose conidia that do not remain connected in chains.

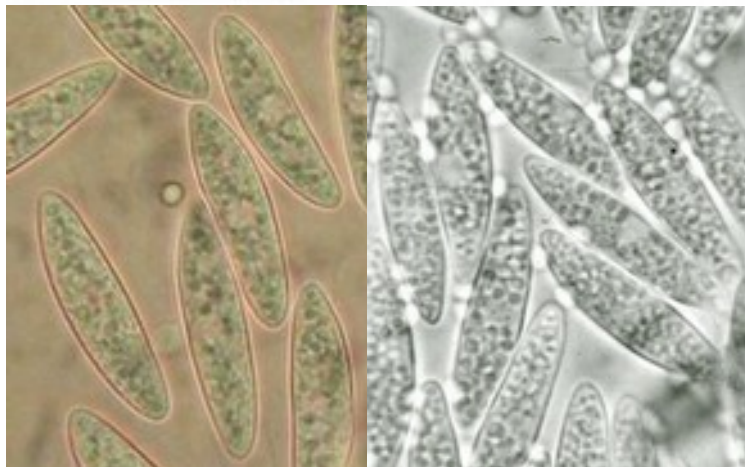
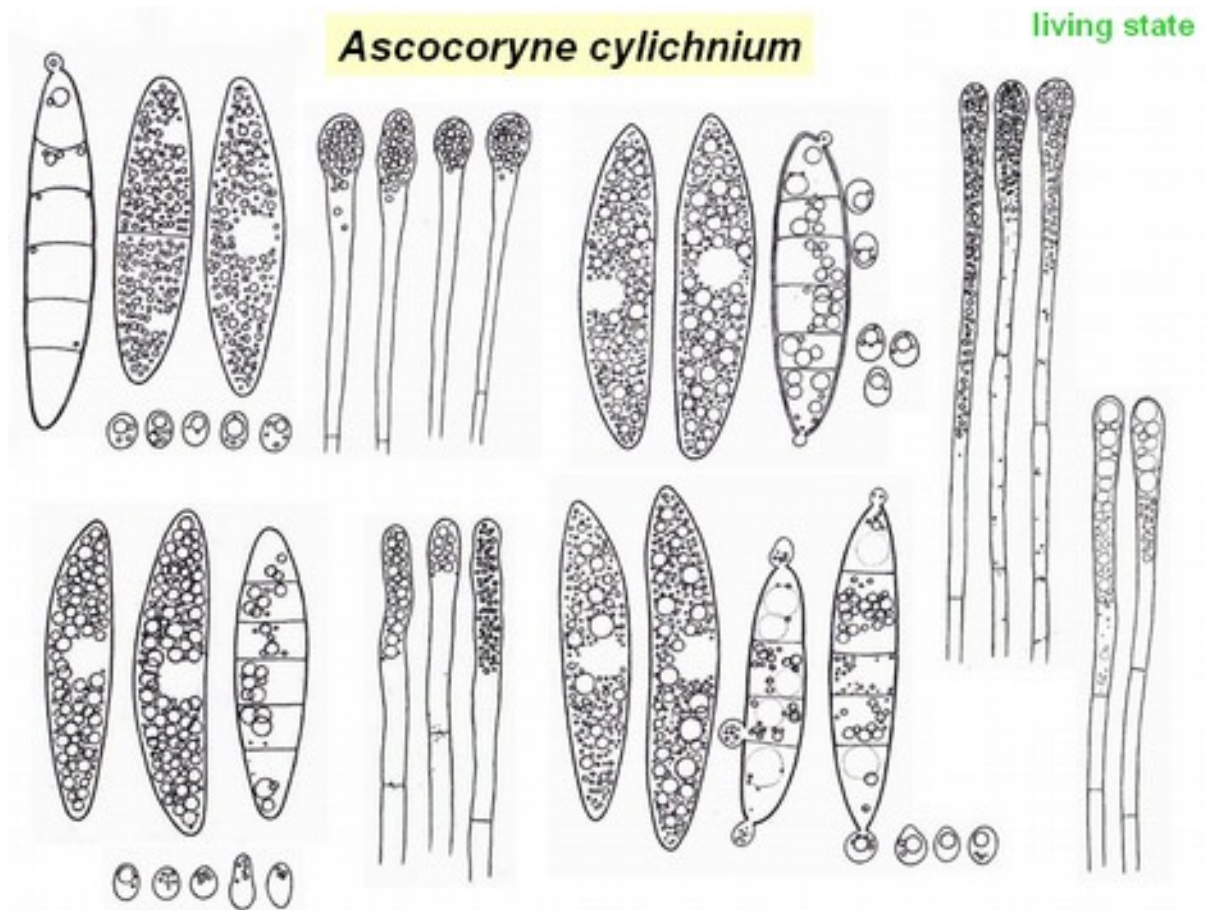


Table of characters

	asci (*)	crz	IKI	ascospores (*)	LB	septa	gm	med	c
inflat	146-185(190?) x (10.5)11.5-13	+	BB	(14) 17-27 (29) 4.4-6µm	2	1-3	mo	gel	
sarc	(120)140-180 (200) 9.3-13 ((14.5))	+	RB	(11.5)14-21 (26) (3.8)4.2-(5.3)	2	1-3	mo	gel	
sol	115-155 9.5-11	+	BB	(11) 14-17 (19) 4.1-4.8µm,	2	1	hy	gel	
conif	175-222 9.3-10.5	+	BB	16-20 (22) 4.4-5	m	(1)3	co	gel	
Evi	208-230 11.3-12.3	+	BB	(20) 24-29 (33) (4.2)5.2-5.6	m	3 (5)	co	th	
cyli	175-275 10.5-13.5	+	BB	(20) 22-28 (30) (4.7)5-6 (6.4)	m	(3)5	co	th	
deunc	160-265 10.5-14.6	-	BB	22-30 5-6.3 (7)	m	(3)5 (6)	co	th	

Expl.: crz (croziers); IKI (Lugol); LB (large lipid bodies): 2 = 2 large LBs, m = multiguttulate; grm (germination): hy = normal germ tubes, mo = moniliform germ tubes with globose conidia in terminal chains, co = single subglobose conidia; med (medulla): gel = whole medulla highly gelatinous, of narrow hyphae, apothecia highly elastic, th = main upper part little gelatinous, of thick hyphae, apothecia rather tough, only slightly elastic; cry (oxalate crystals in medulla); ans (anamorph shape): sl = slimy mass, cr = cerebriform-cushion-shaped, non-gelatinous, cl = clavate to flabelliform, st = stipitate with globose head; aps (apothecial shape): st = +/- stalked, us = unstalked, wholly appressed to substrate; tel (teleomorph): f = frequent, m = medium frequent, r = rare; an (anamorph): dto.; par (paraphyses): apex 1 = slightly inflated, 3 = strongly inflated (capitate); ht (host): c = coniferous, d = deciduous; og (organ): b = bark, w = wood, c = cones.