

# Brigalow / gidgee scrubs



<b>Landform</b>	Level to gently undulating plains.
<b>Woody vegetation</b>	Gidgee and brigalow scrubs of variable density. Blackbutt and Reid river box associated with brigalow. An understorey of wilga, yellowwood, bauhinia, false sandalwood, currant bush and whitewood.
<b>Expected pasture composition</b>	* Denotes non-native "Expected Pasture Composition" species.
Preferred	Queensland bluegrass, curly bluegrass, native millet, curly Mitchell grass, buffel grass*, brigalow grass.
Intermediate	Bull Mitchell grass, yabila, silky browntop, windmill grasses.
Non-preferred	Feathertop wiregrass, winged chloris, lovegrasses.
Annuals	Button grass, Flinders grass, native/spider couch.
<b>Suitable sown pastures</b>	Buffel grass, creeping bluegrass, Bambatsi panic, Angleton bluegrass, urochloa, leucaena, Caatinga stylo, butterfly pea, Desmanthus.
<b>Introduced weeds</b>	Parthenium, parkinsonia, rubbervine, harrisia cactus, mimosa, mother-of-millions.
<b>Soil</b>	Self-mulching grey cracking clay with gilgais to massive dark grey to dark brown clays (vertisol).
Description	<b>Surface:</b> Self-mulching or massive; <b>Surface texture:</b> light clay to medium clay; <b>Subsoil texture:</b> medium to heavy clay.
Water availability	High
Fertility	Moderately high.

Salinity

Slightly saline in the surface; moderately saline in subsoils.

Sodicity

Moderately sodic in subsoils.

pH

Slightly acidic (pH 6.3) at surface, increasing alkalinity down profile.

### Long-term carrying capacity information (A condition)

Based on fully watered area for 1AE = 450 kg animal consuming 8kg DM/day				
Median annual rainfall 494 – 648 mm				
Pasture type	Median tree cover (TBA m <sup>2</sup> /ha) (FPC %)	Median annual pasture growth (DM kg/ha)	Safe annual utilisation pasture growth (%)	LTCC (ha/AE)
Native species	0 TBA/FPC	1840 - 2940	30%	3.3 – 5.3
	7 TBA 18 FPC	680 - 1520	30%	6.4 – 14
Buffel	0 TBA/FPC	3080 - 4690	35%	1.8 – 2.7

### Enterprise

Finishing

### Land use and management recommendations

- Suitable for pasture improvement.
- Suitable for cropping in areas that have access to irrigation.
- When mixed with other less fertile land types in a paddock, brigalow/gidgee areas are at risk of overgrazing. Land condition should be carefully monitored and management adjusted if necessary to reduce grazing pressure in these areas.
- Rotational wet seasons spelling to maintain perennial pasture composition.
- Heavy grazing encourages germination of woody species, introduced weeds and development of scalds on massive soils.

### Land use limitations

- Flooding and waterlogging, particularly in gilgais.
- Restricted access in wet conditions.
- Weed invasion (parthenium).
- Establishment problems with improved pastures due to crusting / cracking or coarse self-mulching surface.
- Limited soil erosion hazard. Prone to rill and gully erosion along tracks and fence lines and on sloping lands.

### Conservation features and related management

- Many of these communities have been extensively cleared for pasture development.
- Remaining areas of this land type can provide important regional refuge for some species.
- Habitat for rare species *Sclerolaena everistiana*, *Quassia bidwillii* and *Neoroepera buxifolia* and the painted honeyeater *Grantiella picta*.

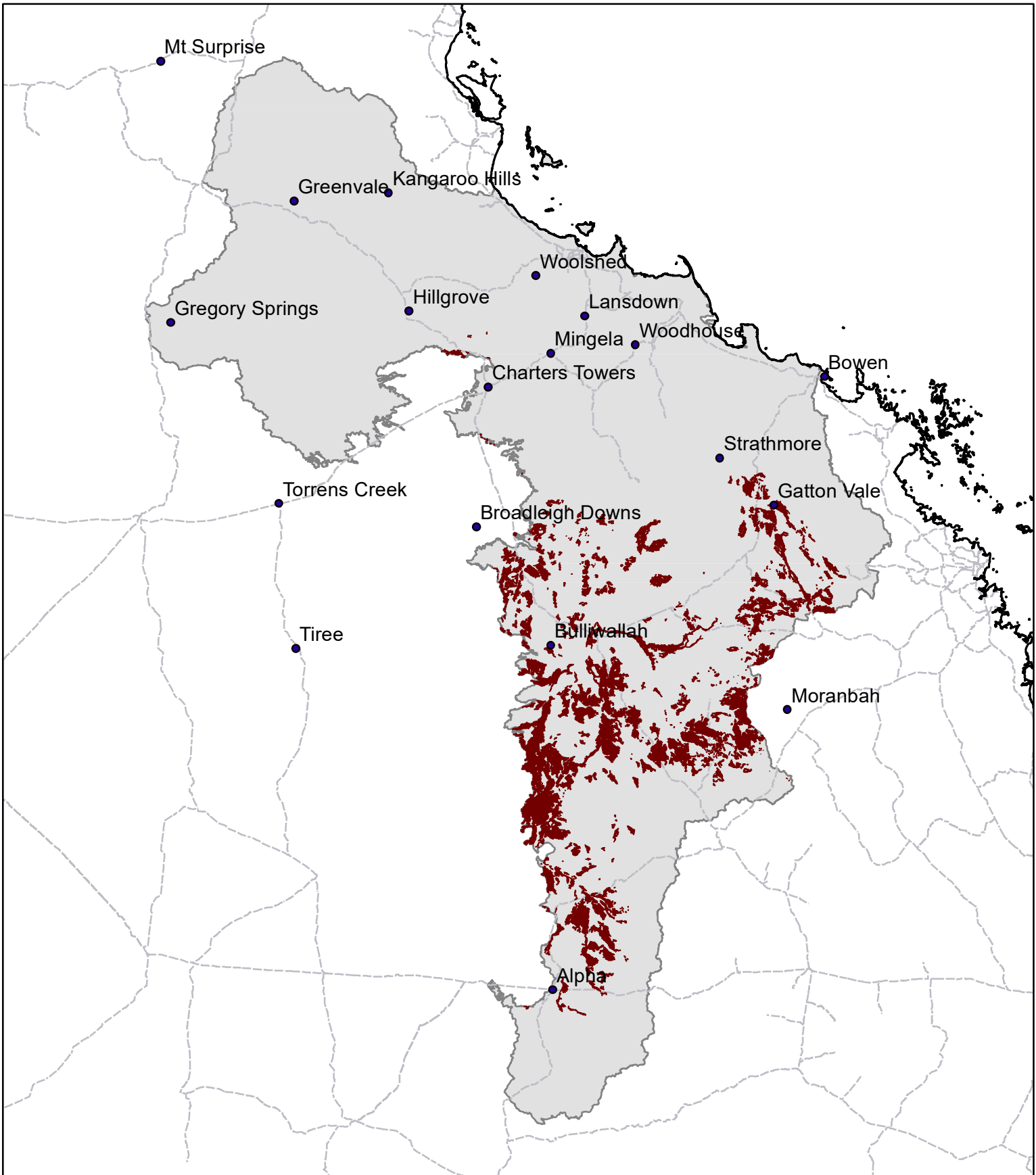
### Regional Ecosystems

11.11.19, 11.3.5, 11.4.6, 11.9.5, 9.3.9, 9.4.1, 9.4.3.

### Land units; Agricultural management unit; Soil associations

Land Systems (Gunn *et al* 1967) Humboldt, Ulcanbah, Islay, Blackwater, Somerby, Moray, Wondabah, Kinsale; AMU (DPI 1993) Adelong, Glengallen, Glen Idol, Lonesome, Picardy, Rolleston, Springton, Turkey Creek; Soil Associations (Rogers *et al* 1999) Egera, Wambiana, Powlathanga, Victoria Downs.

# BD06 Brigalow / gidgee scrubs



Area of land type in region: 6%  
Median rainfall (region): 440 – 981 mm  
Average rainfall (region): 476 – 1112 mm  
Area of land type with FPC: 34%  
Median FPC: 18%  
Median TBA: 7 m<sup>2</sup>/ha



**Queensland**  
Government