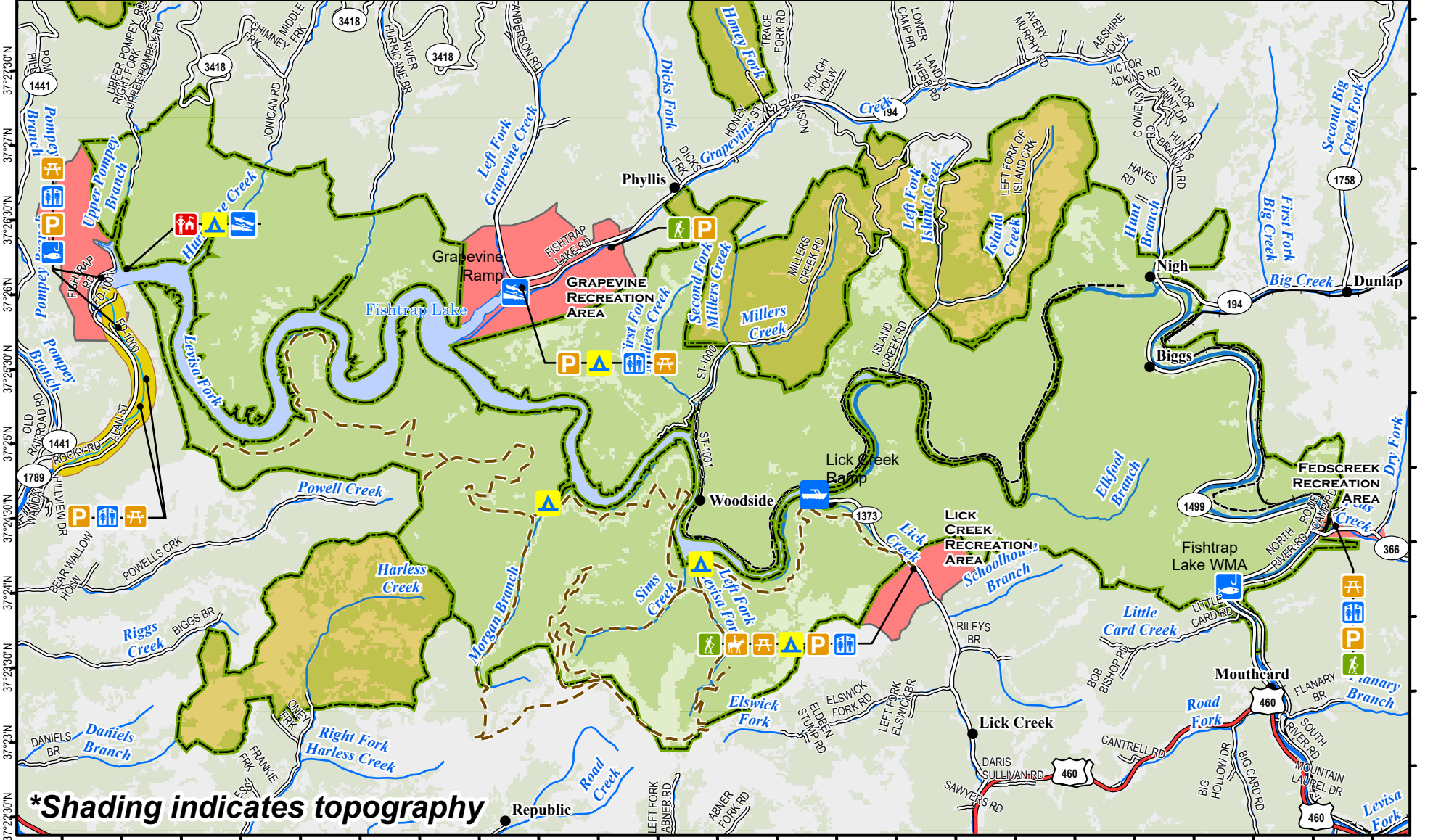




Fishtrap Lake Wildlife Management Area



82°25'30"W 82°25'W 82°24'30"W 82°24'W 82°23'30"W 82°23'W 82°22'30"W 82°22'W 82°21'30"W 82°21'W 82°20'30"W 82°20'W 82°19'30"W 82°19'W 82°18'30"W 82°18'W 82°17'30"W 82°17'W 82°16'30"W 82°16'W 82°15'30"W 82°15'W 82°14'30"W 82°14'W

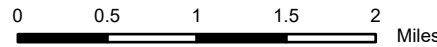


***Shading indicates topography**

A map legend and additional information are provided on PDF pages that accompany this map.

Note to Elk Hunters:
Fishtrap Lake WMA is closed to Elk Hunting.

Publication Date: 7/6/2022
Land Classification from National Land Cover Database 2011



Scale 1:68,000



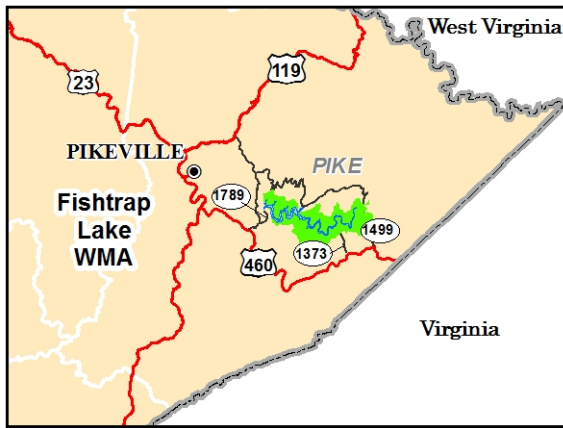
Note to Map Users

Map prepared by Kentucky Department of Fish & Wildlife Resources (KDFWR). Although KDFWR strives for accuracy, data used to create this map are from a variety of sources and dates; as such, KDFWR makes no representations regarding the accuracy or fitness for use of the information furnished herein.

Fishtrap Lake WMA Information



Regional Locator



WMA Overview

Location & Size: Pike County. WMA is 13,135 acres, Fishtrap Lake is 1,038 acres.

Contact: Scott Freidhof (606)783-8634; COE (606)437-9426

Elevation: minimum 749 feet, maximum 1989 feet.

Entrance GPS coordinates: Latitude N 37.42581, Longitude W -82.41324

Area Habitat: mostly forest: open land 13%, forest 85%, wetland 0%, open water 2%.

Directions & Description:

The WMA surrounds most of the shoreline of Fishtrap Lake. From Pikeville take US 460 south. KY 1789 leads to dam area, KY 1373 and KY 1499 lead to upper lake.

Can access by boat. Very steep, rough terrain with narrow ridges and valleys; completely forested, primarily in hardwoods, with scattered openings. Opportunities for hunting, fishing, boating, birding on lake.

Fishtrap Lake WMA is a designated Active Restoration Area and is CLOSED to elk hunting to allow the herd to build. Managed by Kentucky Department of Fish and Wildlife Resources. Owned by U.S. Army Corps of Engineers.

Online Resources






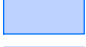

Public Hunting Area users must abide by the Kentucky hunting, trapping, and fishing regulations. It is incumbent on persons using Public Hunting Areas to become familiar with these regulations. Kentucky Department of Fish & Wildlife Resources provides these regulations on our Web site at fw.ky.gov or by calling 1-800-858-1549.

Wildlife Management Area Map Notes & Legend

NOTE TO MAP USERS:

For most WMA maps the landscape is depicted using a combination of elevation contours, hillshading and a green tint indicating woodland areas that is derived from satellite imagery. On WMAs that are relatively small or have a history of surface mining aerial photography is used.

WMA Map Legend

	WMA Office		WMA Boundary		Populated Place
	Information Kiosk		Aerial photograph		Kentucky Boundary
	Check station		Other Public Hunting Areas		Interstate Highway
	Mobility-impaired Hunting Blind		Area Off Limits		Kentucky Parkway
	Trailhead		No Hunting		U.S. Highway
	Horseback Trailhead		Seasonally Restricted Access		State Highway
	Parking Lot		Mobility Impaired Hunting Area		Local Road
	Picnic Area		Primitive Hunting Only		Forest Service Road
	Restrooms		Foot Traffic Only		Active Railroad
	Wildlife Viewing Site		Open Water		Abandoned Railroad
	Interpretive Site		Wetland		Federal Recreation Trail
	Retriever Training Site		Woodland		WMA Road
	Gate				WMA Foot Trail
	Campground				WMA Horse Trail
	Cemetery				Gas Pipeline
	Corps of Engineers Office				Powerline
	Waterfowl Blind				Rivers and Streams
	Shooting Range				Dam
	Established Bank Access				Trout Waters
	Fishing Pier				Elevation Contour
	Carrydown Launch				
	Small Boat Ramp				
	Large Boat Ramp				
	State Park Office				