

# Xerox® Color C60/C70 Series Printer

## Customer Expectation & Installation Guide



Xerox® Color C60/C70 Series



## Table of Contents

<b>1 Product Overview .....</b>	<b>1</b>
Introduction .....	1
Product Highlights.....	1
System / Product Configuration .....	1
<b>2 Detailed Specifications .....</b>	<b>2</b>
Product Specifications .....	2
System Specifications.....	2
Device Specifications .....	2
Operating Environment .....	3
Electrical Requirements.....	3
Feature Specifications .....	3
Accounting.....	6
Device Management.....	7
Controller/Print Server .....	7
System Productivity .....	8
Feeding Specifications.....	10
Envelope Feeding Guidelines/Limitations.....	11
Finishing Specifications.....	12
Media and Substrate.....	17
Xerox Sustainability .....	17
<b>3 Maintenance and Support .....</b>	<b>18</b>
Customer/Operator Maintenance.....	18
Support Services .....	18
Call Procedure .....	18
Training .....	18
Product Sustainability.....	18
Supplies and Consumables.....	19
Initial Supplies.....	19
Recommended Supplies .....	19
<b>4 Installation .....</b>	<b>20</b>
Roles and Responsibilities .....	20
Connectivity for Remote Services.....	21
Installation Planning .....	22
Main Components.....	22
Module Dimensions .....	22
Electrical Requirements.....	23
Space Requirements/ Service Space Envelope .....	24
Power Consumption.....	25
Installation Considerations.....	25

- Network Requirements ..... 25
- Fax Telephone Line Requirements (Optional) ..... 25
- Convenience Stapler (Optional) ..... 26
- Energy Star ..... 26
  
- 5 Operational Considerations ..... 27**
  - Image Quality Expectations ..... 27
  - Print Expectations ..... 27
  - Scanning Expectations ..... 27
  - Non-standard Paper Sizes ..... 27
  - Service Uptime ..... 28
  - Solutions ..... 28
  - Operational Definitions ..... 29
  
- Appendix ..... 30**
  - Links: (Paste into your browser) ..... 30
  
- Customer Agreement ..... 31**

# 1 Product Overview

The C60/C70 offers the widest range of applications in this market space due to our low melt toner, flexible paper path and our unique relationship with Domtar Paper. We can run synthetics, plastics, vinyls, window clings, carbonless paper, nevertear paper, transfer papers, magnets and many other unique applications that the competition simply is unable run on their devices. The C60/C70 also produces Image Quality that is benchmark compared to the competition. We offer 2400 x 2400 dpi which enables us to create the best images in our class with the widest color gamut, best fine line detail, and color consistency from print to print and job to job. Finally, the C60/C70 has received noteworthy reliability and productivity per BLI. BLI has recognized the C60/C70 family as having the best reliability and productivity in our market class.

## Introduction

When at the workplace, the Xerox Color C60/C70 series gives your staff the luxury of controlling device functions from any workstation. Plus, mobile professionals can stay connected to the communications tools and productivity solutions offered by the C60/C70 series – for more flexibility regardless of location.

## Product Highlights

### Benchmark Productivity

Paper-intensive industries like healthcare, finance, and the public sector are struggling to find efficient and cost-effective ways to bridge the paper to digital void.

### Security

IT security managers are already overwhelmed with managing security demands of ever growing connected devices, threats and regulations. Small businesses don't really have the staff to manage security.

### Environment

Your work environment is just a small piece of the puzzle that forms our natural environment. The choices you make impact the overall health of our planet, for better or worse; and office technology is a key consideration.

## System / Product Configuration



## 2 Detailed Specifications

### Product Specifications

#### System Specifications

Print Speed and Monthly Volume	C60	C70
Simplex Speed B&W/Color	Up to 65 /60 ppm	Up to 75 / 70 ppm
Recommended Average Monthly Print Volume <sup>1</sup>	15,000-60,000 pages	15,000-60,000 pages
Maximum Monthly Duty Cycle <sup>2</sup>	Up to 300,000 pages	Up to 300,000 pages

#### What exactly is Duty Cycle?

Duty Cycle is a print device's rated capacity to continuously perform work under normal conditions. It is usually expressed as the sustainable volume in letter or A4-sized pages that can be printed per month.

#### Define the problem

When discussing a machine's capabilities, there is often a misconception about its Duty Cycle. Customers tend to think in terms of duty cycle, while Xerox thinks in terms of AMPV (Average Monthly Print Volume). Many print device vendors today do not define what these terms mean, how they are different, and how it affects a customer.

#### What are considered "normal conditions"?

Because Duty Cycle is based on how the printer performs under "normal conditions," you first must define what "normal conditions" are—and there are many factors that affect the execution of everyday print jobs. These include everything from the robustness of the machine and the types of applications being run to the physical environment in which the customer is printing. In addition, any true measure of what constitutes "normal" must account for those occasions when a job is running at less than maximum speed. And as we all know, there are other times that for any number of reasons, a job isn't running and the machine sits idle. It's a natural part of the printing business. So to calculate Duty Cycle, Xerox took into account these "normal conditions", as well as the anticipated shift usage per week, to consider all factors that a machine and its operators may encounter when running print jobs.

#### What is the difference between AMPV and Duty Cycle?

Duty Cycle takes into account the actual capabilities of a machine with varying circumstances, while Average Monthly Print Volume (AMPV) is the volume an average customer is expected to produce on a machine in a month. AMPV reflects a range of an entire machine population's monthly usage, while Duty Cycle displays the potential to grow while still utilizing the machine. This is important to keep in mind because although a customer's typical print volume may fall into the AMPV range, the company may grow beyond the usual volume and printing capability of the machine. This is why when making a buying decision, a customer should look at their AMPV and the company's potential to grow.

#### Technology

Advanced Emulsion Aggregate (EA) Low Melt Toner

<sup>1</sup> The Average Monthly Print Volume is the expected regular monthly throughput.

<sup>2</sup> The Monthly Duty Cycle is the maximum volume capacity expected in any one month. This volume is supported under standard vendor supplied service for any single month but is not expected to be sustained on a regular basis. Customers should consider higher volume machines or multiple machines if average monthly volume approaches the maximum duty cycle on a continual basis.

#### Connectivity

10/100/1000Base-T Ethernet, High-Speed USB 2.0 direct print,

#### Device Specifications

##### Control Panel Language Support

English, French, German, Spanish, Italian, Dutch, Brazilian, Portuguese, Swedish, Norwegian, Danish, Finnish, Turkish, Greek, Russian, Czech, Polish, Romanian, Hungarian, Catalan

NOTE: Hebrew and English are supported on a different ROM

#### Certifications

- FCC Class A Compliant (US), ICES Class A Compliant (Canada)
- CSA Listed (UL 60950-1, Second Edition)
- CB Certified (IEC 60950-1, Second Edition)
- ENERGY STAR®
- GOST
- NOM
- Environmental Choice Eco Logo (Canada)
- CE Marked
- EPEAT-Bronze/Silver (United States)
- GS Mark
- Citrix® Certified
- WHQL
- Cerner
- MEDITECH
- SAP
- To view the latest list of certifications, go to [www.xerox.com/OfficeCertifications](http://www.xerox.com/OfficeCertifications) (Paste into your browser)

#### Accessory Options

- OHCF (Oversize High Capacity Feeder with small media bracket)
- IFM (Interface Module)
- Business Ready Finisher
- Business Ready Finisher with Booklet Maker
- Standard/Light Production Finisher
- Light Production Finisher w/Booklet Maker
- Hole Punch for Business Ready Finisher
- GBC Advanced Punch
- Square-fold Trimmer
- C/Z Folder
- Vertical Transport Module
- Convenience Stapler (includes Work Surface)
- Postscript Kit
- Media Card reader
- Smart Card Enablement Kit (CAC)
- Xerox Secure Access Unified ID System® (with USB Card Reader with Follow-You Print™)
- Walk up Fax (One, two or Three-line options, includes LAN Fax)
- ScanFlowStore®

Foreign Device Interface (FDI) (Optional)

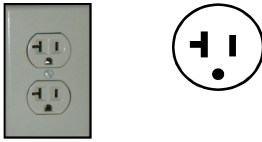
Also known as Auxiliary Access Device, this is an interface to third party access control devices, such as coin machines and card readers.

**Operating Environment**

Operating Environment	C60/C70
Required Temperature Range	50° to 82° F (10° to 28° C)
Required Relative Humidity	15% to 85% RH
Altitude (above sea level)	Max of 8,200 (2,500 meters)
Sound Power Levels (Base Configuration)	Operating: 7.55 LwAd(B) Standby: 5.17 LwAd(B)
Sound Pressure Levels (Base Configuration)	Operating: 57.4 LpAd(dBA) Standby: 34.7 LpAd(dBA)

**Electrical Requirements**

Electrical	C60/C70
North America	Voltage : 110-127 VAC +/- 10% Frequency: 50/60 Hz +/- 3%, 20 A
Europe / Asia / South America / Africa	Voltage : 220-240 VAC +/- 10% Frequency: 50/60 Hz +/- 3%, 10 A

NA Specific Power Requirements: C60/C70	
Line Option	Sole Use (not required but recommended)
Voltage	110-127
Amperage	20
Cycles	60 Hz, Single Phase
Xerox Receptacle Part Number	600S3703
Receptacle NEMA Part Number	5-20R
Power Cord Length	8.5ft.
Receptacle Diagram The Xerox Color C60/C70 requires the use of a 20-ampere outlet, which is standard in most modern office buildings. Consult the diagram (right side) to confirm the existence of this outlet in the proposed installation space.	<div style="border: 1px solid black; padding: 5px; display: inline-block;">120 V 20A NEMA 5-20R</div> 

EU Specific Power Requirements: C60/C70	
Line Option	Sole Use (not required but recommended)
Voltage	220-240
Amperage	10
Cycles	50 Hz, Single Phase
Receptacle	The Xerox Color C60/C70 requires the use of a 10-ampere outlet, which is standard in most modern office buildings. Consult with local service to determine the country specific receptacle and confirm the existence of this outlet in the proposed installation space.
Power Cord Length	8.5ft.

Accessories Requiring External Power Source	
Conv. Stapler	(120V 15 A) / (220V 10 A)
Print Server	(120V 15 A) / (220V 10 A)
Monitor	(120V 15 A) / (220V 10 A)
OHCF (1- or 2- tray)	(120V 15 A) / (220V 10 A)
IFM	(120V 15 A) / (220V 10 A)
Standard Finisher	(120V 15 A) / (220V 10 A)
Booklet Maker Finisher	(120V 15 A) / (220V 10 A)
GBC Advanced Punch	(120V 15 A) / (220V 10 A)
Square-Fold Trimmer	(120V 15 A) / (220V 10 A)
C/Z Folder	(120V 15 A) / (220V 10 A)
Spectrophotometer powered through USB port	

**Feature Specifications**

Print	C60/C70
First Print Out Time <sup>3</sup>	A4 LEF Simplex Color 10.4 seconds / Black-and-white 8.5 seconds
Resolution	Up to 2400 x 2400 dpi, 256 shades of gray
Registration	Printing registration specifications for 8.5 x 11" (A4): <ul style="list-style-type: none"> <li>±0.7 mm (side 1-2), along the lead edge from Trays 1-4</li> <li>±1.2mm (side 1-2) along the side edge from Trays 1-4</li> <li>Skew along Lead Edge from Bypass tray skew is ±1.5mm.</li> </ul>
Max Printable Area	The Xerox® Color C60/C70 will reproduce 11" x 17" full bleed when printing on 12" x 18" or 13" x 19" paper and A3 full bleed when printing on SRA3 paper. The maximum length images (480mm) are only produced on media 19" long. On all media there is a Lead Edge deletion of 4mm and a Trail Edge deletion of 4mm. Side edge deletion is 3mm except for 13" x 19" media. On 13" x 19" media the side deletion is 3.5mm. <p><b>Copy</b></p> Max Image Area 297mm x 432mm    11.69" x 17" Guaranteed Image Quality Area: 297mm x 432mm    11.69" x 17" <b>Print</b> Max Image Area 323mm x 480mm    12.72" x 18.90" Guaranteed Image Quality Area: 317mm x 480mm    12.48" x 18.90"
Print Features	Optional: PostScript Kit Adobe PostScript printing (includes a small plug-in card)
	Standard: <ul style="list-style-type: none"> <li>Print from USB, Earth Smart Driver Settings, Job Identification, Booklet Creation, Store and Recall Driver Settings, Bi-directional Status, Scaling, Job Monitoring, Color By Words, Xerox® PrintBack</li> </ul>

Print	C60/C70
	<ul style="list-style-type: none"> <li>• Application Defaults</li> <li>• Banner Sheet Enable / Disable</li> <li>• Bi-directional Status</li> <li>• Cover Selection</li> <li>• Delay Print (specific time)</li> <li>• User Permissions</li> <li>• Image Options (Toner Saver, Resolution (Standard, Enhanced, High))</li> <li>• Job Identification (Print ID or Banner, Print ID in margins on first page only or all pages)</li> <li>• Layout / Watermark (N-up (up to 16 pages per sheet), Multi-up, Booklet layout / finishing, Fit to new paper size)</li> <li>• Paper Selection by Attribute</li> <li>• LAN Fax (requires optional Fax Kit)</li> <li>• Sample Set</li> <li>• Store File to Folder Secure Print with Timed Deletion</li> <li>• Special Pages (exception page programming: covers, inserts, exception pages)</li> <li>• Store and Recall Driver Settings</li> <li>• Sustainability Features (Xerox® Earth Smart Settings, Duplex, N-up, Turn-off Banner and Print ID, Smart Sample Set, Hold All Jobs)</li> <li>• TWAIN Print Driver</li> </ul>
	<p>Optional:</p> <ul style="list-style-type: none"> <li>• Mobile Printing: Xerox® Mobile Print®, Xerox® Mobile Print Cloud®</li> </ul>
Print from USB	<ul style="list-style-type: none"> <li>• Allows walk-up printing from Type A USB port on front panel</li> <li>• Supports direct printing from computer via Type B USB port</li> <li>• Supported file formats: PDF, JPEG, TIFF, XPS TXT</li> </ul>
Xerox® Mobile Express Driver® (X-MED)	Makes it easy for mobile users to find, use and manage Xerox® and non-Xerox devices in every new location. Plug into a new network, and X-MED automatically discovers available printers and provides status and capability information. Save a list of "favorite" printers for each location, store application print settings for use on any printer in any network, and greatly reduce mobile support calls to IT.
Xerox® Global Print Driver®	A truly universal print driver that lets IT administrators install, upgrade and manage Xerox® and non-Xerox devices from a single driver. It provides a consistent, easy-to-use interface for end-users, reducing the number of support calls, and simplifying print services management.
Xerox® Pull Print Driver	Makes it easy for IT managers to qualify, deploy and manage all print devices using a single driver in a Pull Print environment. Uses a single queue and single driver. The Xerox® Pull Print Driver extends convenience across a broad range of printing assets. IT administrators no longer need to manage and configure multiple drivers. Used in conjunction with Xerox Secure Access Unified ID System®, Equitrac Office®, Ysoft® SafeQ®, Pharos® and others.
<b>Print Solutions</b>	

Print	C60/C70
Xerox® Mobile Print Cloud (Optional)	Xerox® Mobile Print Cloud addresses the needs of businesses with a mobile workforce and puts you ahead of the evolving mobile print need, but without burdening staff, budget or infrastructure. Getting started takes only a few minutes via the cloud. Print from any mobile device to nearly any brand of printer. Accurate printing with true Microsoft® Office® rendering and more. Print what you need, when, where and how you need it.
Xerox® Mobile Print Solution (Optional)	Xerox® Mobile Print Solution is an ideal choice for sites that have additional requirements for control and security with an onsite server. Xerox® Mobile Print Solution allows users to print from most mobile devices to nearly any brand of printer or MFP without drivers or added complexity. Simply enter a release code (PIN) at the device and get accurate printing with true Microsoft Office rendering and more to use with your server for private, onsite deployment.

Copy	C60/C70
First Copy Out Time <sup>4</sup>	As fast as 6.5 seconds color / 4.1 seconds black-and-white/Platen As fast as 9.6 seconds color / 5.3 seconds black-and-white/DADF
Sides	Input-to-Output: 1-1, 1-2, 2-2, 2-1
Quantity	1 to 9,999
Resolution (max)	Scan Up to 600 x 600 dpi., 256 shades of gray
Reduce / Enlarge	Variable zoom from 25% to 400% in 1% increments
Features	<ul style="list-style-type: none"> <li>• Annotation and Bates™ stamping (with color capability and font size adjustment)</li> <li>• Authentication for Services (i.e. Color Copy)</li> <li>• Auto Paper Select</li> <li>• Auto Reduction &amp; Enlargement to fit selected paper size</li> <li>• Auto Tray Switching</li> <li>• Automatic 2-sided/Duplex</li> <li>• Booklet Creation</li> <li>• Build Job: (Enables page-level programming and also lets you proof each section or delete last section as the job is built)</li> <li>• Collation</li> <li>• Covers (Front only, front and back, back only, printed inside and out: Blank or Printed)</li> <li>• Dividers (blank)</li> <li>• Edge Erase</li> <li>• ID Card Copy</li> <li>• Image Quality Adjustments</li> <li>• Image Shift (with Auto Center option)</li> <li>• Invert Image (negative or mirror image)</li> <li>• Interrupt</li> <li>• Multi-up (up to 15 columns by 15 rows)</li> <li>• Sample Set</li> <li>• Stored Programming Single Color</li> <li>• Stapling</li> <li>• Transparencies</li> </ul>
Features	Xerox® Copier Assistant® (XCA) Software provides a PC-based alternative to the user interface touch screen. Used in conjunction with a customer-supplied PC attached via the USB port, this software supports text-to-speech, screen magnification and easy PC keyboard access to basic and advanced copy features. Section 508 compliant. For more information

<sup>4</sup> The first copy out times are measured scanning a 8.5x11/A4 document on platen and delivered to the center tray.



Copy	C60/C70
	or to download Xerox® Copier Assistant for free, visit <a href="http://www.xerox.com">www.xerox.com</a>

Scan	C60/C70
Concurrency	Scan while the system is printing, copying, or while it is transferring scan to network or fax jobs (priority is for return of scanned originals and printing concurrent jobs)
Input Speed	Up to 200 images per minute color and black-and-white
Resolution	<ul style="list-style-type: none"> <li>• 600 x 600 dpi</li> <li>• 400 x 400 dpi</li> <li>• 300 x 300 dpi</li> <li>• 200 x 200 dpi</li> </ul> Scan Default Resolution: 200 dpi
Duty Cycle	145K Feeds
Max Scan Area	11 x 17 in. / A3
Scan Template Management	<ul style="list-style-type: none"> <li>• Support 250 scan templates</li> <li>• Create Xerox® CentreWare® IS scan templates and share via device cloning to other MFPs</li> <li>• Confirmation sheet options</li> </ul>
Network Print Services	FTP, SMB, NetWare, HTTP, HTTPS
File Formats	<ul style="list-style-type: none"> <li>• Color TIFF (TIFF 6.0 or TTN2 with JPEG, LZW)</li> <li>• Black-and-white TIFF (G3MH, G4 MMR compression - single or multiple pages)</li> <li>• Searchable PDF and PDF/A (MRC, JPEG, G3 MH, G4 MMR, JBIG 2 Huffman, JBIG Arithmetic Compression, Deflate (for Black-and-white and within MRC))</li> <li>• JPEG</li> <li>• XPS</li> <li>• Encrypted / Password Protected PDF (Network Scan Templates only)</li> <li>• Linearized PDF</li> </ul>
Document Management Fields (Meta Data)	Features only available in Network Scan to File Templates: <ul style="list-style-type: none"> <li>• 1 to 6 user programmable metadata fields per network scan to file templates and unlimited fields within the template               <ul style="list-style-type: none"> <li>– Metadata field consists of field name, default value and other configurations</li> </ul> </li> <li>• Customized fields viewed on user interface for variable data input</li> </ul>
Scan Features	Standard: Scan to Network, Scan to Email, Scan to Folder, Scan to SMB or FTP, Text Searchable PDF, PDF/A, XPS, PDF, JPEG, TIFF, Scan to USB Memory Device, Single Touch Scanning, TWAIN Support <ul style="list-style-type: none"> <li>• Mixed Size Originals</li> <li>• Compression Quality/File Size Control</li> <li>• Original Type (Photo and Text, Photo, Text, Map, Newspaper / Magazine)</li> <li>• Auto Background and Shadow Suppression</li> <li>• Size for Size (for mixed size originals)</li> <li>• TWAIN Driver</li> <li>• Edge Erase</li> <li>• Reduction/Enlargement</li> </ul>
Supported Scan Destinations	Standard: <ul style="list-style-type: none"> <li>• Scan to USB Drive</li> <li>• Scan to Email</li> <li>• Scan to PC / Server Client (SMB or FTP)</li> <li>• Scan to Mailbox</li> </ul>

Scan	C60/C70
	<ul style="list-style-type: none"> <li>• Scan to Home</li> <li>• Scan to Application through EIP</li> </ul> Optional: <ul style="list-style-type: none"> <li>• Xerox® Scan to PC Desktop® (Professional and SE)</li> <li>• ScanFlowStore®</li> <li>• Various Xerox® Business Innovation Partner Solutions</li> </ul>
Authentication	<ul style="list-style-type: none"> <li>• Supports Kerberos (UNIX / Windows Server)</li> <li>• SMB (Windows Server)</li> <li>• LDAP</li> <li>• Xerox Secure Access Unified ID System®</li> <li>• Locally on device</li> <li>• Convenience Authentication via Magstripe, Proximity and Smart Card (CAC / PIV and .NET) readers</li> </ul>
Scan to Email Features (Standard)	Directory Access: <ul style="list-style-type: none"> <li>• Address list via LDAP (Windows Archive Directory, Exchange, Notes, Domino)</li> <li>• Importing of address list (comma-separated file format)</li> </ul> <ul style="list-style-type: none"> <li>• Email signatures (6 lines each of 128 character max), email message body (user configurable), email CWIS confirmation sheet options</li> <li>• Scan to Email S/MIME Encryption</li> <li>• Email Signing (requires Smart Card option)</li> <li>• Auto send to self</li> </ul>
<b>Network Scanning – Software Solutions</b>	
Xerox® Scan to PC Desktop® Professional (Optional)	A desktop offering that provides advanced document imaging, archiving, editing and organization tools: <ul style="list-style-type: none"> <li>• PaperPort Professional image viewing and file management software               <ul style="list-style-type: none"> <li>– Complete PDF functionality</li> <li>– Secure PDF workflow of all scanning applications</li> </ul> </li> <li>• OmniPage Pro Office (for desktop/client installation) – Professional OCR software for digital archiving and document conversion</li> <li>• Image Retriever – provides fully automated retrieval of scanned images direct from a scan enabled Xerox® C60/C70 to individual desktops. Also includes email inbox polling capability</li> </ul>

Fax	C60/C70
Fax Features	Standard: <ul style="list-style-type: none"> <li>• Internet Fax, Fax Build Job, Network Server Fax Enablement (solutions available through various Xerox® Business Innovation Partners)</li> </ul> Optional: <ul style="list-style-type: none"> <li>• Fax Forward to Email or SMB, Walk-up Fax (one-line, two line and three-line options, includes LAN Fax)</li> </ul>
<b>Network Server Fax Features</b>	
Compatibility	ITU (CCITT) group 3 Various Xerox® Business Innovation Partner Solutions
Max Scan Area	11 x 17 in. / A3
Send Features	<ul style="list-style-type: none"> <li>• One- or Two-sided Scanning (up to 11 x 17 in. / A3)</li> <li>• Add to Send List (50 numbers maximum)</li> <li>• Build Job, Speed Dial, Delay Send (specific time) Original Type (photo, text or photo and text)</li> </ul>
Print Features	<ul style="list-style-type: none"> <li>• One- or Two-sided Printing</li> </ul>



Fax	C60/C70
	<ul style="list-style-type: none"> <li>• Staple</li> <li>• Secure Print</li> </ul>
Transmission Resolution	<ul style="list-style-type: none"> <li>• Superfine: 400 x 200 dpi (Scan at 600 x 600 dpi)</li> <li>• Fine: 200 x 200 dpi</li> <li>• Standard: 200 x 100 dpi</li> </ul>
Internet Fax Features	
Compatibility	<ul style="list-style-type: none"> <li>• Direct print-ready document transmission to remote Internet Fax machines or email clients (SMTP)</li> <li>• Reception and automatic printout of documents sent via email from remote Internet Fax machines or email clients</li> </ul>
Address Directory Access	<ul style="list-style-type: none"> <li>• Send: Multi-page TIFF, PDF, PDF/A</li> <li>• Receive: TIFF, MTIFF, PDF, PDF/A, PS, text, PCL, PRN, JPEG</li> </ul>
Resolution	<ul style="list-style-type: none"> <li>• 100 x 100dpi to 600 x 600 dpi</li> <li>• Bit Depth: 1-bit (black-and-white)</li> </ul>
Network Protocols	SMTP (send), POP3 (receive)
Compliance	ITU-T T.37 compliant
Walk-up Fax Features (Optional (Customer-installable) – 1 and 2 lines)	
Compatibility	ITU (CCITT) group 3
Compression / Speed	MH/G3, MMR/SG3
Resolution	<ul style="list-style-type: none"> <li>• Standard: 200 x 100 dpi</li> <li>• Fine: 200 x 200 dpi</li> <li>• Superfine: 600 x 600 dpi</li> <li>•</li> </ul>
Fax Send Features	<ul style="list-style-type: none"> <li>• LAN Fax (fax from print driver)</li> <li>• Auto Fax Transmission Reduction</li> <li>• Page-by-page Job Status at the Machine</li> <li>• Delay Start, Build Job, Favorites</li> <li>• Automatic Memory Resend</li> <li>• Automatic Cover Sheets</li> <li>• Device Address Book (up to 1,000 contacts)</li> </ul>
Fax Receive Features	<ul style="list-style-type: none"> <li>• One- or Two-sided Printing</li> <li>• Receive Print Mode – Manual / Auto</li> <li>• Output Tray Selection</li> <li>• Up to 500 Password Protected Mailboxes</li> <li>• Secure Receive</li> <li>• Receive Timestamp</li> <li>• Auto Answer Delay</li> </ul>
Fax Forward	<ul style="list-style-type: none"> <li>• Forward to Email or SMB Location</li> <li>• Fax Forward on Receive Only</li> </ul>
Fax Reports	<ul style="list-style-type: none"> <li>• Configuration Report, Inbound Fax SPAM list, Address book, Scan Fax Configuration, Domain Filter List, Fax Comment List, Folder Selector List, VOIP Gateway List</li> </ul>
Auto Dialing	<ul style="list-style-type: none"> <li>• Speed Dials: 2,000 total (one- or two-line options)</li> <li>• Group Dials: Up to 50 groups with up to 400 recipients per group (one- or two-line options)</li> <li>• Auto Redial: Up to 5 attempts (per country requirements)</li> <li>• 1 to 15 minute intervals(1 min by default)</li> <li>• Batch send (up to memory capacity)</li> </ul>

Security	C60/C70
Security Features	Standard: <ul style="list-style-type: none"> <li>• HDD Overwrite, 256-bit Encryption (FIPS 140-2 compliant), Common Criteria Certification (ISO</li> </ul>

Security	C60/C70
	15408), Secure Print, Secure Fax, Secure Scan, Secure, Email, Network Authentication, SSL/TLS SNMPv3, Audit Log, Access Controls, User Permissions
	Optional: <ul style="list-style-type: none"> <li>• Xerox Secure Access Unified ID System® with Follow-You Printing®, Smart Card Enablement Kit (CAC/PIV/.NET)</li> <li>• Expanded Authentication               <ul style="list-style-type: none"> <li>– Network authentication to access device and/or device services via- Kerberos (UNIX / Windows Server 2003 / Windows Server 2008), SMB (Windows 2000 / Windows Server 2003 / Windows Server 2008), , LDAP</li> <li>– Xerox Secure Access Unified ID System®</li> <li>– Local Authentication (internal database)</li> <li>– Smart Card authentication -144k CAC / PIV Card Support (2048 bit certificate key) /.NET</li> </ul> </li> <li>• Secure Data               <ul style="list-style-type: none"> <li>– Digitally signed PDF (when using Smart Card authentication)</li> <li>– Encrypted Scan to Email</li> <li>– Encrypted Password Protected PDF (when using Network Scan Templates only)</li> <li>– Secure Print (up to 12 digit PIN Immediate Image Overwrite</li> <li>– On Demand Image Overwrite (Scheduled, Manual), includes sanitation of unused area of disk</li> <li>– FIPS 140-2 256 bit Hard Disk Encryption</li> </ul> </li> <li>• Expanded Authorization               <ul style="list-style-type: none"> <li>– SA access based on network credentials</li> <li>– Authorization per user per service</li> <li>– User Permissions required to access Print and Print Features (e.g. color access, or time restrictions) reflects in the print driver</li> </ul> </li> <li>• IP Filter, IPsec, IPv6, SSL, SNMPv3, HTTPs, 802.1X,</li> <li>• Device Security               <ul style="list-style-type: none"> <li>– Disabling of i USB ports, Audit Log, Hide Print Job Names,</li> </ul> </li> </ul>
Secure Access Unified ID System® (Optional)	<ul style="list-style-type: none"> <li>• Xerox Secure Access Unified ID System® integrates your Xerox® multifunction systems with your existing employee/student ID PIN or badge providing a flexible and convenient authentication system. Allow your staff, employees or students to send documents to a centralized print server. Then, at any multifunction printer on the network, they'll simply log in with a swipe of their magnetic or proximity ID card or their PIN to securely print their job.</li> <li>• For more information, go to <a href="http://www.office.xerox.com/software-solutions">www.office.xerox.com/software-solutions</a></li> </ul>

## Accounting

Features	C60/C70
Xerox® Standard Accounting (Copy, Print, Scan, Fax, Email)	
Tracking	Copy, Print, Fax, Scan and Email usage
Accounting	<ul style="list-style-type: none"> <li>• Up to 9,999 User accounts (User ID)</li> <li>•</li> </ul>
Features	<ul style="list-style-type: none"> <li>• Administrator can manage the feature via the Web User Interface or device control panel in tools</li> <li>•</li> </ul>
Optional Accounting Features	Equitrac Office®, Equitrac Professional®, YSoft® SafeQ®, other network accounting solutions available through various Xerox® Business Innovation Partners

Standard Network Accounting – Third Party Enablement	<p>Enhanced network accounting with up to the minute data on how the system is being used</p> <ul style="list-style-type: none"> <li>• Comprehensive management and enterprise scale tracking and reporting of device usage of copy, print, scan and server fax</li> <li>• Numerous solutions are available through Xerox® Alliance Partners. For details visit <a href="http://www.xerox.com">www.xerox.com</a></li> <li>• Security enhancements with the addition of HTTPS protocol support</li> <li>• WorkCentre requests account authentication from third party server enabling larger databases of users and accounts</li> <li>• Accept Authentication Login at control panel and pass to third party Networking Account</li> <li>• Interface with third party accounting terminal for accounting user interface</li> </ul>
--	---

## Device Management

Features	C60/C70
Management Support	<ul style="list-style-type: none"> <li>• SNMP Version 1. SNMP Version 2c and SNMP Version 3 trap over TCP/IP and IP</li> <li>• MIB access (IETF-MIBII RFC 1213), Host Resources</li> <li>• MIB RFC 2790, Printer MIB RFC 1759 v.2</li> </ul>
Xerox® CentreWare® Web	<p>A Web-based server application for network administrators that permits Web browser-based device management from any workstation, whether running Windows, UNIX or any other operating system:</p> <ul style="list-style-type: none"> <li>• Works with any SNMP-managed printer from any manufacturer.</li> <li>• Provides help with device discovery and installation, health checks and troubleshooting, and device upgrades, as well as basic accounting and asset management.</li> <li>• Requires Windows XP, Vista or Windows 7 and Internet Explorer 6.0 and higher.</li> <li>• CentreWare Integration available for Tivoli® NetView®, Unicenter TNC®, Microsoft Management Console (MMC), HP® OpenView®</li> </ul>
Xerox® Device Manager	<p>Xerox® Device Manager collects and manages the data that drives fact-based decisions for your enterprise device management environment. It is a single tool to install print queues and configure, manage, monitor and report on both networked and locally connected devices – regardless of vendor – across your enterprise.</p> <p>Xerox® Device Manager provides:</p> <ul style="list-style-type: none"> <li>• Device monitoring and troubleshooting</li> <li>• Extensive reporting and discovery of new devices</li> <li>• Usage collection, chargeback and billing capabilities</li> </ul>
Xerox® Device Types for SAP Environment	<ul style="list-style-type: none"> <li>• Xerox, together with SAP through our Gold-level membership in the SAP Printer Vendor Program, provides seamless connectivity between SAP systems and your Xerox® printers and MFPs. And as an SAP customer you benefit from having SAP-certified Xerox® device types available right from SAP's online delivery model. SAP-certified device types for Xerox® printers and MFPs are available to download. <a href="http://www.office.xerox.com/software-solutions">www.office.xerox.com/software-solutions</a></li> </ul>
Xerox® SAP R/3 Intelligent Barcode Utility (optional)	<ul style="list-style-type: none"> <li>• Provides built-in process intelligence that allows the printing of barcodes on any appropriately configured PostScript printer in specific versions of SAP environment and within Latin-1</li> </ul>

Features	C60/C70
	<p>(ISO8859-1) SAP system code pages only. Used in conjunction with Xerox® PostScript Device Types for SAP environment and Xerox® Font Center Barcode Fonts. Information available at <a href="http://www.office.xerox.com/software-solutions">www.office.xerox.com/software-solutions</a></p>
Xerox® Barcode Pro PS (optional)	<ul style="list-style-type: none"> <li>• Enables intelligent PostScript printing on Xerox® multifunction systems by storing Xerox® software, as well as, the barcode fonts on the printer hard disk. Enables the printing of barcodes from any application (SAP client or mainframe) that supports PostScript printing. Information available at <a href="http://www.office.xerox.com/software-solutions">www.office.xerox.com/software-solutions</a></li> </ul>
CentreWare Internet Services – Integrated Web Pages Provided by the Device	
Device Status	<p>Web server embedded in Network Controller:</p> <ul style="list-style-type: none"> <li>• Tray status/contents</li> <li>• Consumables status</li> <li>• Alerts</li> </ul>
Job Submission	<ul style="list-style-type: none"> <li>• Print ready files: PS, PCL, TIFF, PDF, JPG, XPS</li> <li>• Output feature selection (2-sided, output color, collate, staple, hole punch, output destination)</li> <li>• Delivery options (Immediate, sample set, delay and secure)</li> </ul>
Administration	Allows simple, remote installation setting of configuration options and management of the device
Browsers	<ul style="list-style-type: none"> <li>• Internet Explorer 6.x, 7.x, 8.x, 9.x, 10.x, 11.x</li> <li>• Safari 5.x, 6.x, 7.x</li> </ul>
Support	Install print / scan drivers and online support available via web page
Languages Supported	International English, International French, Italian, German, International Spanish, Dutch, Brazilian Portuguese, Swedish, Norwegian, Danish, Finnish or Russian
Remote Services	
Meter Assistant®	<ul style="list-style-type: none"> <li>• Automates the process of collecting and submitting meter reads for tracking and billing of Xerox® device usage.</li> <li>• Eliminates the need for time-consuming end-user involvement and ensures that meter reads are submitted to Xerox on time.</li> </ul>
Supplies Assistant®	Automatically orders supplies for Xerox® output devices based on actual usage, eliminating the need to manually manage supplies inventory.
Maintenance Assistant®	Offers a fast (and free) way to resolve potential issues and receive assistance and automate the troubleshooting/repair process. Diagnostic data is sent to Xerox, allowing for problems to be solved faster with increased uptime.

## Controller/Print Server

**\*Note: For specific DFE Controller information please refer to the appropriate separate controller CED.**

Controller	C60/C70
Processor	1.0 GHz Dual-core
Memory	4 GB system plus 1 GB page memory
System Disk	320 GB
Display	10.4 Inch UI
PDLs	<p>Page Description Languages:</p> <ul style="list-style-type: none"> <li>• Adobe® PostScript® 3™, PDF, PCL® 5c / PCL 6, XML Paper Specification (XPS®) (Optional)</li> </ul>
Operating Systems	<ul style="list-style-type: none"> <li>• Microsoft® Windows® XP (32- and 64-bit)</li> <li>• Windows Server 2003 (32- and 64-bit)</li> <li>• Windows Server 2008 (32- and 64-bit)</li> </ul>

Controller	C60/C70
	<ul style="list-style-type: none"> <li>Windows Server 2012</li> <li>Windows Vista (32- and 64-bit)</li> <li>Windows 7 (32- and 64-bit)</li> <li>Windows 8 (32- and 64-bit)</li> <li>Mac OS 10.7 and above</li> <li>Solaris® 9, 10</li> <li>HP-UX® 11v2</li> <li>IBM® AIX® 5</li> <li>Redhat® Fedora® Core 15-17</li> <li>Redhat Enterprise 4 and 5</li> <li>openSUSE® 11 and 12</li> <li>Ubuntu®</li> <li>Unix®</li> </ul>
Features	<ul style="list-style-type: none"> <li>Unified Address Book</li> <li>Configuration Cloning</li> </ul>
Connectivity	Network Protocols: <ul style="list-style-type: none"> <li>TCP/IP: HTTP/HTTPS, Internet Printing Protocol, LPR/LPD, Raw Socket Printing/Port</li> </ul>

Controller	C60/C70
	9100, IPv4/IPv6, WSD <ul style="list-style-type: none"> <li>Microsoft Windows Networking over IP</li> <li>Bonjour®</li> <li>IPv6</li> <li>Most protocols not in use can be disabled</li> </ul> Administrative Protocols: <ul style="list-style-type: none"> <li>DHCP, BOOTP, SNMP, WINS, SLP® v2, HTTP, HTTPS, DHCP Autonet, SSL/TLS, NTP, DNS, SSDP RARP</li> </ul>
Fonts	<ul style="list-style-type: none"> <li>PCL5/6: 82 PostScript 3: 136:</li> </ul>

## System Productivity

The printer may cycle down between each page depending on job complexity.

Overall system performance ('Click to Clunk' time) is primarily dependent upon the software applications and network environment being used.

Rasterizing (RIP-ing) is only a small fraction of Click to Clunk time.

The continuous print speeds shown in table below are for feeds from Trays 1 – 4. Speed from Bypass Tray (5) will be reduced by 10-20%.

Simplex Productivity (ppm) Size	Weight	Xerox Color C60 Speed		Xerox Color C70 Speed	
		Color	B/W	Color	B/W
8.5x11 (A4) LEF	Plain, 18lb – 28lb (64gsm – 105gsm)	60	65	70	75
11x17 (A3)	Plain, 18lb – 28lb (64gsm – 105gsm)	30	33	35	37
12 x 18 (SRA3)	Plain, 18lb – 28lb (64gsm – 105gsm)	27	29	30	33
8.5x11 (A4) (Tray 5)	Transparency	18*	40	18*	40
8.5x11, (A4) LEF	Heavyweight 1 28lb – 90lb Index, (106gsm – 176gsm)	43	65	50	75
11x17 (A3)	Heavyweight 1 28lb – 90lb Index, (106gsm – 176gsm)	21	33	25	37
12 x 18 (SRA3)	Heavyweight 1 28lb – 90lb Index, (106gsm – 176gsm)	19	29	19	33
8.5x11 (A4) LEF	Coated 1 80lb – 100lb Text (105gsm – 150gsm)	43	43	50	50
11x17 (A3)	Coated 1 80lb – 100lb Text (105gsm – 150gsm)	21	21	25	25
12 x 18 (SRA3)	Coated 1 80lb – 100lb Text (105gsm – 150gsm)	19	19	19	19
8.5x11 (A4 LEF)	Heavyweight 2 65lb Cover – 80lb Cover (177gsm – 220gsm)	30	43	35	50
11x17 (A3)	Heavyweight 2 65lb – 80lb Cover (177gsm – 220gsm)	14	21	17	25
12 x 18 (SRA3)	Heavyweight 2 65lb – 80lb Cover (177gsm – 220gsm)	12	19	12	19
8.5x11 (A4 LEF)	Coated 2 65lb – 80lb Cover (177gsm – 220gsm)	30	30	35	35
11x17 (A3)	Coated 2 65lb – 80lb Cover (177gsm – 220gsm)	14	14	17	17
12 x 18 (SRA3)	Coated 2 65lb – 80lb Cover (177gsm – 220gsm)	12	12	12	12

Simplex Productivity (ppm) Size	Weight	Xerox Color C60 Speed		Xerox Color C70 Speed	
Tab Stock 1 (Tray 5)	Pre-cut Tabs 28lb – 90lb Index, (106gsm – 176gsm)	24	33	24	35
Tab Stock 2 (Tray 5)	Pre-cut Tabs Heavyweight 65lb Cover – 80lb Cover (177gsm – 220gsm)	17	24	17	24

\* Media heavier than 220 gsm (80 lb. Cover) needs to be fed through Tray 5 or the optional OHCF.  
Image Quality adjustments can decrease productivity during a run. Finisher options may also impact productivity.

Duplex Productivity (ppm) Size	Weight	Xerox Color C60 Speed		Xerox Color C70 Speed	
		Color	B/W	Color	B/W
8.5x11 (A4) LEF	Plain, 18lb – 28lb (64gsm – 105gsm)	30	32	35	37
11x17 (A3)	Plain, 18lb – 28lb (64gsm – 105gsm)	15	16	17	18
12 x 18 (SRA3)	Plain, 18lb – 28lb (64gsm – 105gsm)	13	14	15	16
8.5x11 (A4) LEF	Heavyweight 1 28lb – 90lb Index, (106gsm – 176gsm)	21	32	25	37
11x17 (A3)	Heavyweight 1 28lb – 90lb Index, (106gsm – 176gsm)	10	16	12	18
12 x 18 (SRA3)	Heavyweight 1 28lb – 90lb Index, (106gsm – 176gsm)	9	14	9	16
8.5x11 (A4) LEF	Coated 1 80lb – 100lb Text (105gsm – 150gsm)	21	21	25	25
11x17 (A3)	Coated 1 80lb – 100lb Text (105gsm – 150gsm)	10	10	12	12
12 x 18 (SRA3)	Coated 1 80lb – 100lb Text (105gsm – 150gsm)	9	9	9	9
8.5x11 (A4 LEF)	Heavyweight 2 65lb Cover – 80lb Cover (177gsm – 220gsm)	15	21	17	25
11x17 (A3)	Heavyweight 2 65lb – 80lb Cover (177gsm – 220gsm)	7	10	8	12
12x18 (SRA3)	Heavyweight 2 65lb – 80lb Cover (177gsm – 220gsm)	6	9	6	9
8.5x11 (A4 LEF)	Coated 2 65lb – 80lb Cover (177gsm – 220gsm)	15	15	17	17
11x17 (A3)	Coated 2 65lb – 80lb Cover (177gsm – 220gsm)	7	7	8	8
12x18 (SRA3)	Coated 2 65lb – 80lb Cover (177gsm – 220gsm)	6	6	6	6

\* Media heavier than 220 gsm (80 lb. Cover) needs to be fed through Tray 5 or the optional OHCF.  
Image Quality adjustments can decrease productivity during a run. Finisher options may also impact productivity.

## Feeding Specifications

### Automatic Document Feeder

C60/C70	
Single Pass Duplex Automatic Document Feeder	
Capacity	250 sheets (Single-pass DADF)
Speed	<ul style="list-style-type: none"> <li>up to 200 images per minute</li> </ul>
Paper Sizes Sensed	5.5 x 8.5 in. to 11 x 17 in. / A5 to A3
Weights	16 lb. bond to 32 lb. bond / 50 gsm to 160 gsm

Bypass Tray 5	
Capacity	Tray 5: 250 sheets of 20lb/80gsm
Standard Sizes	Min: postcards Max: SRA3 SEF, 12x18" SEF
Custom Sizes	Min: 3.9x5.8"/100x148mm Max: 13 x 19.2/330x488mm SEF
Weights	18 lb. bond to 80lb. cover / 64 to 216 gsm with additional 221-300gsm capability
Trays 1 and 2	
Capacity	Trays 1-2: 500 sheets each;
Standard Sizes	Tray 1: Min: A5 SEF, 8.5x5.5" SEF Max: SRA3 SEF, 12x18" SEF Trays 2: Min: A5 SEF, 8.5x5.5" SEF Max: A3 SEF, 11x17 SEF
Custom Sizes	Tray 1: Min: 5.5x7.2"/140 x 182mm Max: 13x18"/320 x 458mm Trays 2: Min: 5.5 x 7.2"/140 x 182mm Max: 11x17/297 x 432mm
Weights	<p>Plain: 18lb – 28lb (64 – 105gsm) Heavyweight 1: 28lb – 90lb index (106– 176gsm) Coated 1: 106-150gsm Heavyweight 2: 65lb cover – 80lb cover Coated 2: (151-220gsm) (177 – 220gsm) Heavyweight 3: (221 –256gsm)</p> <p>*When feeding HW2,HW3,and/or coated stock it is highly recommended to feed from tray 5 (Bypass) or trays 6/7 (OHCF) due to degraded feeding performance of these papers through trays 1-2.</p>
Trays 3&4 (Total 2,010 sheets) (Available with all configurations)	
Capacity <sup>v</sup>	Tray 3: 870 sheets Tray 4: 1140 sheets
Standard Sizes	Tray 3/4: B5 LEF or 7.25"x10.5"LEF A4 LEF,8.5" x 11" LEF Same as tray 1&2
Weights	18 lb. bond to 80 lb. cover uncoated/ (64to 256 gsm) / Coated (106-220gsm)  *When feeding HW2,HW3,and/or coated stock it is highly recommended to feed from tray 5 (Bypass) or trays 6/7 (OHCF) due to degraded feeding performance of these papers through trays 3-4.
OHCF Trays 6&7(Total 4,000 sheets) (Available with all configurations)	
Capacity <sup>v</sup>	Tray 6: 2000 sheets Tray 7: 2000 sheets
Standard Sizes	1 Tray OHCF: 7.2 x 10 in. / 182 x 250 mm (B5) to 13 x19.2 in. / 330 x 488 mm (SRA3); 2 Tray OHCF:4 x 6 in. /102 x 152 mm to 13 x 19.2 in. / 330 x 488 mm (SRA3) <ul style="list-style-type: none"> <li>One or two tray module: 2,000 sheets / 4,000 sheets</li> <li>Small Media support included with 2 Tray OHCF(Must use small media guide when width is less than 182mm)</li> </ul>

	<ul style="list-style-type: none"> <li>Envelope and small media feeder</li> </ul>
Weights	<ul style="list-style-type: none"> <li>65 lb. cover / 176 gsm auto duplex for all stocks</li> <li>80 lb. / 220 gsm auto duplex for most stocks (Letter / A4, Tabloid / A3)</li> <li>110 lb. cover / 300 gsm simplex and manual duplex for all stocks</li> </ul>

## Envelopes

The XeroxC60/C70 currently supports running the following envelope types through Tray 5. Depending on thickness, up to 50 envelopes can be loaded. Envelopes can also be fed from OHCF Trays 6 & 7 with the small media side guide installed. Stack heights in these trays may need to be reduced if jams are encountered with various envelope types.

Envelope Type/Size	Feed Direction Flap Open	UI Tools Input
Monarch 3.87in x 7.50in 98.4 X 190.5mm	LEF	Custom Paper Size 7.5in x 6.7in 190.0mm X 170.0 mm
Commercial #10 4.12in x 9.50in 104.8mm X 241.3mm	LEF	Custom Paper Size 9.45in x 6.81in 240.0mm X 173.0 mm
Envelope: Chou-kei3 120.0mm X 235.0mm	SEF	Default Input Size when customized in tools
Envelope: Kaku-ga 240.0mm X 332.0mm	SEF	Default Input Size when customized in tools
Envelope C4 229.0mm X 324.0mm	SEF	Default Input Size when customized in tools
Envelope C5 162.0mm X 229.0mm	SEF	Default Input Size when customized in tools

\*\*Note: Please be aware that envelopes are not intended to be a primary media for this product.

## Envelope Feeding Guidelines/Limitations:

- Envelope should be run using media type “heavyweight 2”, “face-up” selected.
- Envelopes should be run open flap to the left (trail edge) which provides the best wrinkle free results. It is not recommended to run closed flap because it is more susceptible to wrinkles, creases, light image, and the flap sealing during the run.
- North American envelopes will only run in Custom Size Mode with manually inputting the size indicated above. These dimensions include a commercial style open flap (specific dimensions for the envelopes being used should be entered, including flap size).
- Some European envelope sizes can be programmed as a default on the UI in Tools.
- Envelope Basis Weight must be between 75 to 90 GSM.
- Bypass tray can handle SEF stacks of 30 – 50 envelopes.
- Stacking capacity in SCT varies from approx. 30 to 100 envelopes.
- Frequent jams or damage may occur with certain size envelopes & flap designs.
- Image Quality may be compromised when running various flap & seam designs.
- Maximum reliable LEF / flap open exit tray stack height is less than 10 envelopes.
- Maximum reliable SEF stack height in SCT is 30 – 50 envelopes
- Other variables that can affect envelope feeding performance:
  - Envelope brand, size, weight, and seam configuration.
  - Flap design, size, and shape.
  - Orientation of Flap in feed trays – Inboard or Outboard.
  - Storage / environmental conditions, and age of envelopes.
  - Output devices used.



## Finishing Specifications

Simple Catch Tray (SCT)	
Capacity	<ul style="list-style-type: none"> <li>Unavailable in North America</li> <li>The Simple Catch Tray (SCT) can accommodate up to 500 sheets of 13"x19"/SRA3 20lb Bond/80 gsm media.</li> </ul>
Offsetting Catch Tray OCT	
Capacity	<ul style="list-style-type: none"> <li>The Offsetting Catch Tray (OCT) can accommodate up to 500 sheets of 13"x19" / SRA3 20lb bond/80gsm Media.</li> </ul>
Business Ready Finisher	
Capacity	<ul style="list-style-type: none"> <li>Top Tray will handle up to 500 sheets of 8.5"x11" / A4 20lb Bond/80 gsm uncoated/coated paper and can accommodate up to 13" x 19" / SRA3 size media 64-300gsm. (Note: heavier paperweight will result in reduced output tray capacity).</li> <li>Stacker output tray will handle up to 3,000 sheets of 8.5" x 11" / A4 20lb Bond/80 gsm uncoated/coated paper and can accommodate up to 13" x 19" / SRA3 size media 64-300gsm. (Note: larger media will result in reduced output tray capacity).</li> </ul>
Weights	16 lb bond to 110 lb cover / 64 to 300 gsm
Multi-position Stapling	<ul style="list-style-type: none"> <li>Multi-position stapling of up to 50 sheets uncoated paper and 15 sheets coated paper with up to 50 sheets available to the Stacker tray.</li> <li>Quad stitch stapling available through EFI (stand alone and bustled), and FFPS bustled DFE's only; for 8.5x11/A4, 11x17/A3</li> </ul>
Hole Punch	
North America:	<ul style="list-style-type: none"> <li>2-3 Hole Punch</li> </ul>
Europe:	<ul style="list-style-type: none"> <li>2-4 Hole Punch</li> </ul>
	<ul style="list-style-type: none"> <li>Swedish Hole Punch</li> </ul>
Business Ready Finisher with Booklet Maker	
Capacity	<ul style="list-style-type: none"> <li>Top Tray will handle up to 500 sheets of 8.5"x11" / A4 20lb Bond/80 gsm uncoated/coated paper and can accommodate up to 13"x19" / SRA3 size media 64-300gsm. (Note: heavier paperweight will result in reduced output tray capacity).</li> <li>Stacker output tray will handle up to 1,500 sheets of 8.5"x11" / A4 20lb Bond/80 gsm uncoated/coated paper and can accommodate up to 13"x19" / SRA3 size media 64-300gsm. (Note: larger media and heavier media will result in reduced output tray capacity).</li> </ul>
Weights	16 lb. bond to 110 lb. cover / 64 to 300 gsm
Multi-position Stapling	<ul style="list-style-type: none"> <li>Multi-position stapling of up to 50 sheets uncoated paper and 15 sheets coated paper with up to 50 sheets available to the Stacker tray.</li> <li>Quad stitch stapling available through EFI (stand alone and bustled), and FFPS bustled DFE's only; for 8.5x11/A4, 11x17/A3</li> </ul>
Hole Punch	
North America:	<ul style="list-style-type: none"> <li>2-3 Hole Punch</li> </ul>
Europe:	<ul style="list-style-type: none"> <li>2-4 Hole Punch</li> </ul>
	<ul style="list-style-type: none"> <li>Swedish Hole Punch</li> </ul>
Booklet Making capacity	<ul style="list-style-type: none"> <li>The Booklet Tray will handle up to 20 sets of a maximum of 16 stapled sheets per set and can accommodate up to 13"x18" / SRA3 media. (Note: larger media will result in reduced output tray capacity).</li> <li>Booklet saddle stitching available with Short Edge Feed (SEF) paper sizes 8.5x11", 8.5x13", 8.5x14", 11x17", , A4, A3,. The Finisher Booklet Maker can accommodate up to 20 sets of up to 16 sheets per set when stapled. Booklets can consist of 2 to 16 sheets of 20b (80 gsm)</li> <li>For coated/uncoated stocks the Business Ready Finisher with booklet maker supports booklet sizes of up to 7 sheets of 106-176 gsm, and 5 uncoated sheets of 177-220gsm.</li> <li>Bi-Fold 5 sheets</li> </ul>
Booklet Making Sizes	<ul style="list-style-type: none"> <li>Booklet stitching available with paper sizes of 8.5"x 11"SEF, 8.5"x13"SEF, 8.5"x14"SEF, 9"x11"SEF, 11"x15"SEF, 11"x17"SEF, 12"x18"SEF, 13"x18"SEF, A4SEF, B4SEF, A3SEF, SRA3SEF. Booklets up to 16 sheets of non-coated 24lb/90 gsm or 14 sheets of non-coated 20lb/80 gsm plus 1 non-coated cover between 90-176 gsm</li> </ul>
Saddle- Stitch Stapling	2-16 sheets / 8-64 page booklet 18 lb. bond to 24 lb. bond / 64 to 90gsm

C/Z Folder (Optional for BR Finisher and BR Finisher with Booklet Maker)	
<p>Folder option provide three different folds: C Fold, Z Fold and Z Half Fold</p> <ul style="list-style-type: none"> <li>• Folding limited to 16-24 #/60-90gsm media only</li> <li>• C Fold and Z Fold: <ul style="list-style-type: none"> <li>- Letter/ A4 paper sizes only</li> <li>- Output destination to output tray only</li> <li>- Envelope tray capacity- 30 sheets</li> </ul> </li> <li>• Z Half fold: <ul style="list-style-type: none"> <li>- Tabloid &amp; A3 paper sizes only</li> <li>- Output destination to stacker tray or top tray</li> </ul> </li> </ul>	

Standard Finisher (appears as Light Production Finisher in some geographies; (Xerox Europe)	
Capacity	<ul style="list-style-type: none"> <li>• Top Tray will handle up to 500 sheets of 8.5"x11" / A4 20lb Bond/80 gsm uncoated or coated paper and can accommodate up to 13"x19" / SRA3 size media 64-300gsm. (Note: heavier paperweight will result in reduced output tray capacity).</li> <li>• Stacker output tray will handle up to 3,000 sheets of 8.5"x11" / A4 20lb Bond/80 gsm uncoated or coated paper and can accommodate up to 13"x19" / SRA3 size media 64-300gsm. (Note: larger media will result in reduced output tray capacity).</li> <li>• The Standard Finisher has a standard Interposer unit (used to insert pre-printed stock into finished sets w/o having to go through engine) with the following specs: <ul style="list-style-type: none"> <li>• Tray Capacity: 200 sheets of up to 128gsm</li> <li>• Paper Weights: 64 to 220gsm (HW2), Tab-1, holed paper.</li> <li>• Labels, coated media &amp; envelopes are not supported</li> <li>• Supported Sizes: Letter L, Ledger, A3, A4 L, Legal/ 8.5x12.5/ 215x315, B5 S/Exec S, Letter S/ 8x10 S, B5 L/ 8x10 L, Letter Cover L/ A4 Cover L, 11x15, B4 (1 sheet of up to 220gsm (HW2), allowed for booklet cover)</li> </ul> </li> </ul> <p><b>Optional C/Z folding unit enables C/Z folding of media up to 24 lb (90 gsm).</b></p> <ul style="list-style-type: none"> <li>• System must be interrupted to remove paper from the optional C/Z folding tray.</li> <li>• Optional C/Z folding tray can accommodate at least 30 sheets of 24 lb (90 gsm) uncoated media). Supported Paper sizes are 8.5x11" (A4) SEF.</li> <li>• 11" x17" paper can be half-Z-folded and delivered to the Top or Stack trays.</li> <li>• Requires the Interface Module</li> <li>• Requires an additional electrical receptacle (see Electrical Requirements section)</li> </ul>
Weights	18 lb. bond to 110 lb. cover / 64 to 300 gsm
Multi-position Stapling	<ul style="list-style-type: none"> <li>• 1- and 2-place stapling of up to 100 sheets of 20lb Bond/80 gsm uncoated or 5 sheets coated paper with 100 sheets available to the Stacker tray.</li> <li>• Quad stitch stapling available through EFI (stand alone and bustled), and FFPS bustled DFE's only; for 8.5x11/A4, 11x17/A3</li> </ul>
Hole Punch	<p>North America:</p> <ul style="list-style-type: none"> <li>• 2-3 Hole Punch</li> </ul> <p>Europe:</p> <ul style="list-style-type: none"> <li>• 2-4 Hole Punch</li> <li>• Swedish Hole Punch</li> </ul>
Booklet Maker Finisher (appears as Light Production Finisher with Booklet Maker or Light Production Finisher with Booklet Maker and Folder in some geographies; (Xerox Europe)	
Capacity	<ul style="list-style-type: none"> <li>• Top Tray will handle up to 500 sheets of 8.5"x11" / A4 20lb Bond/80 gsm uncoated or coated paper and can accommodate up to 13"x19" / SRA3 size media 64-300gsm. (Note: heavier paperweight will result in reduced output tray capacity).</li> <li>• Stacker output tray will handle up to 2,000 sheets of 8.5"x11" / A4 20lb Bond/80 gsm uncoated or coated paper and can accommodate up to 13"x19" / SRA3 size media 64-300gsm. (Note: larger media will result in reduced output tray capacity).</li> </ul> <p><b>Optional C/Z folding unit enables C/Z folding of media up to 24 lb (90 gsm).</b></p> <ul style="list-style-type: none"> <li>• System must be interrupted to remove paper from the optional C/Z folding tray.</li> <li>• Optional C/Z folding tray can accommodate at least 30 sheets of 24 lb (90 gsm) media). Supported Paper sizes are 8.5x11" (A4) SEF.</li> <li>• 11" x17" paper can be half-Z-folded and delivered to the Top or Stack tray</li> </ul> <p><b>The Booklet Maker Finisher has a standard Interposer unit (used to insert pre-printed stock into finished sets w/o having to go through engine) with the following specs:</b></p>








	<ul style="list-style-type: none"> <li>• Tray Capacity: 200 sheets of up to 128gsm</li> <li>• Paper Weights: 64 to 220gsm (HW2), Tab-1, holed paper.</li> <li>• Labels, coated media &amp; envelopes are not supported</li> <li>• Supported Sizes: Letter L, Ledger, A3, A4 L, Legal/ 8.5x12.5/ 215x315, B5 S/Exec S, Letter S/ 8x10 S, B5 L/ 8x10 L, Letter Cover L/ A4 Cover L, 11x15, B4 (1 sheet of up to 220gsm (HW2), allowed for booklet cover)</li> <li>• Requires the Interface Module</li> <li>• Requires an additional electrical receptacle (see Electrical Requirements section).</li> <li>• A service call is required to enable 25 sheet booklets at 75gsm paper weight.</li> </ul>
Weights	18 lb. bond to 110 lb. cover / 64 to 300 gsm
Multi-position Stapling	<ul style="list-style-type: none"> <li>• 1-2 place Multi-position stapling of up to 100 sheets uncoated and 5 sheets coated paper with 100 sheets available to the Stacker tray.</li> <li>• Quad stitch stapling available through EFI (stand alone and bustled), and FFPS bustled DFE's only; for 8.5x11/A4, 11x17/A3</li> </ul>
Hole Punch	<p>North America:</p> <ul style="list-style-type: none"> <li>• 2-3 Hole Punch</li> </ul> <p>Europe:</p> <ul style="list-style-type: none"> <li>• 2-4 Hole Punch</li> <li>• Swedish Hole Punch</li> </ul>
Booklet Making capacity	<ul style="list-style-type: none"> <li>• The Booklet Tray will handle up to 20 sets of a maximum of 25 uncoated sheets (20lb 75gsm)/20 sets of a maximum 20 uncoated sheets (24lb 90gsm). The Booklet Tray will also handle 10 coated/uncoated stapled sheets per set at 106-176 gsm/ 5 uncoated stapled sheets per set at 177-220 gsm, and can accommodate up to 13"x18" / SRA3 media. (Note: larger media will result in reduced output tray capacity).</li> <li>• Booklet saddle stitching available with Short Edge Feed (SEF) paper sizes 8.5x11", 8.5x13", 8.5x14", 11x17", A4, A3. The Finisher Booklet Maker Tray can accommodate up to 20 sets of up to 25 sheets per set when stapled. Booklets can consist of 2 to 25 sheets of 20b (80 gsm)</li> <li>• Bi-Fold 5 sheets</li> </ul>
<p>The GBC® AdvancedPunch™ is an inline die punch that utilizes modular die sets to enable a variety of hole-punch patterns in A4 (European) or 8 ½ x 11 in (LTR) (Western Hemisphere) long-edge-fed media. Output from the GBC® AdvancedPunch™ is bound offline.</p>	
Capacity	<ul style="list-style-type: none"> <li>• The GBC® AdvancedPunch™ requires an Interface Module (IFM) as well as a Light Production C Finisher.</li> <li>• Customers wishing to add the GBC® AdvancedPunch™ to their existing system can do so. Upgrade kits may be required.</li> <li>• The GBC® AdvancedPunch™ is not available for use on Advanced or Professional Finishers, or with the Offset Catch Tray.</li> <li>• GBC® AdvancedPunch™ does not work in conjunction with Z-fold, bi-fold, letter fold, multi-function finisher punch, staple, or booklet making.</li> <li>• Due to its location in the system <ul style="list-style-type: none"> <li>○ Stock from the Post Process Inserter Tray cannot be run through the GBC® AdvancedPunch™.</li> <li>○ Stacking to the booklet output tray or letter fold output tray is not permitted.</li> <li>○ Pre-printed Tabs cannot be punched</li> </ul> </li> <li>• The GBC® AdvancedPunch™ is supported by all color servers.</li> <li>• The GBC® AdvancedPunch™ supports media from 75 to 216 gm<sup>2</sup>, coated and uncoated. <ul style="list-style-type: none"> <li>○ ProClick die supports media from 75 to 203 gm<sup>2</sup></li> </ul> </li> <li>• The GBC® AdvancedPunch™ supports tab stock no wider than 9"; oversized tabs may be damaged. <ul style="list-style-type: none"> <li>○ Stacking may be misaligned on jobs containing tab stock; these jobs will require additional joggling before final finishing.</li> </ul> </li> <li>• The GBC® AdvancedPunch™ is able to bypass all coated and uncoated media sizes printed on the Xerox C60/C70 Digital Color Press.</li> <li>• Hole punch position from edge of paper is not adjustable.</li> <li>• Opening the door of the GBC® AdvancedPunch™ while the machine is running will cause the machine to jam and shut down.</li> <li>• Gloss coated media may not run as reliably as uncoated paper. Typically, coated papers and high area coverage exhibit increased variability in paper handling due to lower coefficients of friction. This may result in varied punch registration and increased jam rates.</li> <li>• Punching 8 ½ x 11 duplexed coated stock using the GBC 3-hole punch (008R13072) is not recommended due to greatly increased paper jams.</li> <li>• Pre drilled stock LEF is not supported by The GBC® AdvancedPunch™, however predrilled stock may be run using SEF</li> <li>• Due to the nature of punching holes, each punched sheet is slightly deformed, and when stacked, the edge</li> </ul>

with the holes will have an increased height as compared to the non-punched edge.

- Reduced stack quality may be experienced due to variability in the punch hole formation.
- The stack height can be effected by many factors, such as: paper type, quality, weight and curl, as well as die type, age and condition. Paper curl is best when it has a slight downward curl on the edges. This can be adjusted by the operator while running prints.

- A4 and LTR punch units are not the same; therefore, A4 and LTR die sets are not interchangeable.
- The LTR punch unit will be shipped with the 19-hole punch die.
- The A4 unit will ship with the 21-hole punch die.
- Additional punch dies are available for order (see below)
- Up to 3 additional die sets can be stored inside the GBC® AdvancedPunch™.
- Punch Dies  
The GBC® AdvancedPunch™ is capable of punching a variety of hole-punch patterns by simply changing the punch die. Punch dies can be changed in seconds without tools. The punch dies currently available are listed below. Each die set has a 90 day warranty from date of purchase.
- In the Western Hemisphere (8 1/2 x 11 inch) punch dies are ordered using the Supplies ordering process; in Europe (A4) punches are ordered through sales representatives; please check for availability.
- A4 and Letter version die sets are not interchangeable.
- Please note: Punch die life will be increased if the wick material is lightly oiled every 50,000 punch cycles (approximately every month) with quality machine oil such as 3-in-1 Oil. Small deposits of oil will be observed around the perimeter of the punched holes until the excess oil is absorbed (usually within 20 sheets).

8 1/2 in. x 11 in. Punch Dies

<p><b>For Plastic Comb Binding choose from:</b></p>  <p>PB Plastic Bind; Hole Size: 8mm x 2.9mm (0.313" x 0.116") (LxW); Center-to-Center Hole Spacing: 14.3 mm (0.563")</p>	<p><b>Xerox Part Number:</b></p> <table border="1"> <tr> <td>XEROX PB-19H</td> <td>008R13066</td> </tr> </table>	XEROX PB-19H	008R13066
XEROX PB-19H	008R13066		
<p><b>For Twin Loop™ Binding choose from:</b></p>  <p>W3 Wire, Square; 3 Holes per inch; Hole Size: 4mm x 4mm (0.156" x 0.156") (L x W); Center-to-Center Hole Spacing: 8.5 mm (0.333")</p>	<table border="1"> <tr> <td>XEROX W3-32H-SQ</td> <td>008R13069</td> </tr> </table>	XEROX W3-32H-SQ	008R13069
XEROX W3-32H-SQ	008R13069		
 <p>W2 Wire, Rectangle; 2 Holes per inch; Hole Size: 6.4mm x 5.4mm (0.250" x 0.214") (LxW); Center-to-Center Hole Spacing: 12.7 mm (0.500")</p>	<table border="1"> <tr> <td>XEROX W2-21H-SQ</td> <td>008R13068</td> </tr> </table>	XEROX W2-21H-SQ	008R13068
XEROX W2-21H-SQ	008R13068		
<p><b>For Color Coil™ Binding choose from:</b></p>  <p>C4 Coil; Round; 4 Holes per inch; Hole Size: 4.4mm (0.174") Diameter; Center-to-Center Hole Spacing: 6.3mm (0.2475")</p>	<table border="1"> <tr> <td>XEROX C4-44H</td> <td>008R13067</td> </tr> </table>	XEROX C4-44H	008R13067
XEROX C4-44H	008R13067		
<p><b>For Velo® Bind choose from:</b></p>  <p>VB Velobind®; Round; 1 Hole per inch Hole Size: 3.2mm (0.125") Diameter; Center-to-Center Hole Spacing: 25.4mm (1")</p>	<table border="1"> <tr> <td>XEROX VB-11H</td> <td>008R13070</td> </tr> </table>	XEROX VB-11H	008R13070
XEROX VB-11H	008R13070		
<p><b>For Looseleaf Binding choose from:</b></p>  <p>3 Ring Binder; U.S. (Standard Looseleaf Patterns); Hole Size: 8mm (0.316") Diameter</p>	<table border="1"> <tr> <td>XEROX 3H</td> <td>008R13072</td> </tr> </table>	XEROX 3H	008R13072
XEROX 3H	008R13072		
<p><b>For Proclick® Binding choose from:</b></p>  <p>W3 Proclick®; Rectangle; Hole Size: 4.9mm x 5.5mm; 0.196"x0.215"(LxW); Center-to-Center Hole Spacing: 8.5mm(0.333")</p>	<table border="1"> <tr> <td>XEROX PC-32H</td> <td>008R13071</td> </tr> </table>	XEROX PC-32H	008R13071
XEROX PC-32H	008R13071		

©2009 GBC, Northbrook Illinois - All rights reserved. Rev 10/02 R2 3/03 Graphics do not represent actual punch pattern dimensions or spacing.

A4 Punch Dies

For Plastic Comb Binding:		Xerox Part Number:	
<p>PB Plastic Bind; Hole Size: 8mm x 3.2mm (0.315" x 0.126") (L x W); Centre-to-Centre Hole Spacing: 14.3mm (0.563")</p>	21	XEROX PB-21H, A4	498K19440
<p>PB Plastic Bind; Australia Hole Size: 8mm x 3.2mm (0.315" x 0.126") (L x W); Centre to Centre hole spacing: 14.3mm (0.563")</p>	20	XEROX PB-20H, A4	498K19340
For Twin Loop™ Binding:			
<p>W3 Wires; Round; 3 Holes per inch; Hole Size: 4mm (0.156") Diameter; Centre-to-Centre Hole Spacing: 8.5mm (0.335")</p>	34	XEROX W3-34H-RND, A4	498K19370
<p>W2 Wires; Round; 2 Holes per inch; Hole Size: 6.5mm (0.256") Diameter; Centre-to-Centre Hole Spacing: 12.7mm (0.5")</p>	23	XEROX W2-23H-RND, A4	498K19360
<p>W3 Wires; Square; Australia; 3 Holes per inch; Hole Size: 4mm x 4mm (0.156" x 0.156") (L x W) Centre to Centre Hole Spacing: 8.5mm (0.335")</p>	34	XEROX W3-34H-SQ, A4	498K19390
<p>W2 Wires; Square; Australia; 2 Holes per inch; Hole Size: 6.4mm x 5.5mm (0.252" x 0.217") (L x W) Centre to Centre hole spacing 12.7mm (0.5")</p>	23	XEROX W2-23H-SQ, A4	498K19380
For Loose-leaf Binding:			
<p>4 Ring Binder; European (Standard Loose-leaf Pattern); Hole Size: 8mm (0.315") Diameter</p>	4	XEROX 4H-8mm, A4	498K19430
<p>2 Ring Binder; European (Loose-leaf pattern); Hole Size: 8mm (0.315") Diameter</p>	2	XEROX 2H-8mm, A4	498K19420
For Velo® Binding:			
<p>VB Wire® Bind Round; 1 Hole per inch Hole Size: 3.2mm (0.126") Diameter; Centre-to-Centre Hole Spacing: 25.4mm (1")</p>	12	XEROX VB-12H, A4	498K19400
For Colour Coil™ Binding:			
<p>C4 Coil; Round; 4 Holes per inch; Hole Size: 4.5mm (0.177") Diameter; Centre-to-Centre Hole Spacing: 6.3mm (0.248")</p>	47	XEROX C4-47H, A4	498K19350
ProClick® A4 34-Hole Binding:			
<p>PC ProClick® Rectangular; 3 holes per inch; Hole size: 5.5mm (0.217") x 5.5mm (0.197") (L x W); Centre to Centre 8.5mm (0.335")</p>	34	XEROX PC-34H, A4	498K19410

*Graphics do not represent actual punch pattern dimensions or spacing.*

SquareFold® Trimmer Module (Optional)	
<p>Operation</p>	<p><b>Overview</b></p> <ul style="list-style-type: none"> <li>The SquareFold® Trimmer Module is an optional piece of equipment that flattens the spine of the booklet to make it lay flat and trims the face of the booklet. It requires the Light Production C Finisher with Booklet Maker (with or without the C-Z Folder) that has upgraded software and hardware. The SquareFold® Trimmer Module is a fully-integrated device, controlled through the print engine UI.</li> <li>The SquareFold® Trimmer Module is supported by all color servers.</li> <li>The SquareFold® Trimmer Module can be added to an existing Light Production C Finisher through an available upgrade kit.</li> </ul> <p><b>Configuration</b></p> <ul style="list-style-type: none"> <li>The SquareFold® Trimmer Module is located after the Light Production C Finisher and performs as follows:                             <ul style="list-style-type: none"> <li>Receives the booklet from the booklet unit</li> <li>Transports the received booklet to the square fold unit to flatten the spine of the booklet and then to the trimmer unit to trim the face of the booklet</li> <li>Deposits the finished booklet to the booklet tray.</li> </ul> </li> <li>The SquareFold® Trimmer Module is also able to face-trim without square-folding</li> <li>All output from the Light Production C Finisher (Booklet Maker Finisher) can be passed through, square-folded, trimmed, or both squared-folded and trimmed</li> <li>This includes custom sizes from 210x297.4mm – 330.2x457.2mm (8.5x11 SEF Letter through 13x18)</li> </ul>



	<ul style="list-style-type: none"> <li>• Auto Recognition of SquareFold® Trimmer Module</li> <li>• When the SquareFold® Trimmer Module is docked to the Light Production C Finisher via cable, the finisher automatically recognizes that the SquareFold® Trimmer Module is installed.</li> <li>• Square-folding feature: flattens the spine (stapled side) of the booklet.</li> <li>• Trimming feature: trims the face of the saddle-stapled or bi-folded (single-folded) sheets of paper.</li> </ul>
Convenience Stapler (Optional - Includes Work Surface)	
Capacity	50-sheet stapling <ul style="list-style-type: none"> <li>• 5,000 staples</li> <li>• Requires a separate outlet</li> </ul>

## Media and Substrate

For more detailed information on throughput materials, please refer to your local Xerox Sales Representative.

- Recommended paper to maximize image quality and product reliability is Xerox Color Xpressions Select 24lb or Xerox Colotech+ 90gsm (smooth bright white paper). This paper is specifically designed to maximize image quality and machine performance over a wide range of environmental conditions.
- Using coated (e.g., gloss, matte coated or photo finished / proofing) and/ or Cardstock (i.e., >90lb Index / 164 gsm) stock may result in degraded reliability performance. Customers using these materials exclusively or extensively will see decreased performance as it relates to image quality and product reliability.
- Attempts to feed heavier than recommended paper stocks, and/or misuse of the media settings, may cause machine damage or poor image quality. Using media at run modes other than that recommended for the grade may cause poor image quality and machine damage.
- Envelope printing should not be used as a primary application
- Envelopes without windows are supported through the bypass tray in sizes Monarch, DL, C5, and No 10 (other custom sizes are supported as well). Envelope feeding reliability is highly dependent on the envelope used and the area coverage of the image being affixed to the envelope.
- Specialty media may not provide optimum image quality at the extremes of the environmental range

### Transparencies

- Transparencies are supported from Tray 5 (Bypass) for clear and white stripe varieties and from Tray 2 for paper backed variety only.
- Use of other transparencies may cause machine damage and result in excessive service

## Xerox Sustainability

### Environmental Features

- The C60/C70 series delivers cutting-edge reductions in energy consumption.
- Conserve Energy with Green Technologies
  - Emulsion Aggregate ( EA) Toner: With ultra low-melt technology achieves minimum fusing temperature lower than conventional toner for even more energy savings and brilliant glossy output even on ordinary paper.
  - Induction heating: The newly developed, heat-efficient IH fuser does not require preheating, which helps reduce power consumption in standby mode by 44% compared to a resistance heating device. Plus, the device recovers from sleep mode in less than 10 seconds.
  - LED scanner: The power consumption of the scanner using LED lighting is 1/3 of traditional scanners using fluorescent lamps.
- Manage Resource Usage and Print Responsibly
  - Energy Management. With Cisco® EnergyWise, enabled by Xerox® Power MIB (Management Information Base), you can control, manage and report your device's power consumption information, and set optimal power states and timeout intervals.
  - Earth-smart printing. Innovative new Earth Smart feature allows you to choose the most environmentally sensitive options for your print jobs.
- Xerox® operates a worldwide equipment take back and reuse/recycle program. Contact your Xerox® sales representative (1-800-ASK-XEROX) to determine whether this Xerox® product is part of the program. For more information about Xerox® environmental programs, visit [www.xerox.com/environment](http://www.xerox.com/environment).

### Packaging take-back service for Xerox branded products:

Whenever possible, we encourage you to recycle packaging locally as it reduces greenhouse gas emissions associated with transportation. However, if unable to recycle locally, we offer a packaging take-back and recycling service to our customers for Xerox branded products, where customers pay for the return shipping and Xerox pays for the recycling. If interested in this service, please send your packaging to: Xerox Corporation, ESSO – Scrap, 6500 State Route 63, Middletown, OH 45044 , ATTN: EPEAT Packaging Returns



## 3 Maintenance and Support

This section helps define the support and services that Xerox will supply and what is expected of the customer.

### Customer/Operator Maintenance

See Section 4

### Support Services

#### Call Procedure

The Xerox Customer Support Centers are available to provide general information, answer questions and take service calls. You can reach the Customer Support Center at the following toll-free phone numbers:

Technical Support Contact Information		
Geography	Country	Phone Number
North America	US	1-800-821-2797
	Canada	1 800 939 3769
	Mexico	01.800.00.Xerox (93769) Opción 2
South America	Argentina	0800-222-XEROX (0800-222-93769)
	Bolivia, Plurinational State of	0800-222-XEROX (0800-222-93769)
	Brazil	4004-4050 (capitais e regiões metropolitanas) 0800 979 3769 (demais localidades)
	Chile	800-200-600
	Colombia	+01 8000 410071 / (571) 489 0071
	Paraguay	0800-222-XEROX (0800-222-93769)
	Uruguay	0800-222-XEROX (0800-222-93769)
	Venezuela	+0800 7746837
Western Europe	Austria	0043 1 207 9000
	Belgium	32 2 713 14 52
		352 48 01 23 (Luxembourg)
	Denmark	70107288
	Faroe Islands	00 298 344001
	Finland	(09) 6937 9666
	France	0 825 012 013
	Germany	069 999915632
	Greece	801 11 93769
	Greenland	+299 36 35 34
	Iceland	+354 440 9000
	Ireland	1890 925 050
	Italy	199 309 241
	Luxembourg	32 2 713 14 52
		352 48 01 23 (Luxembourg)
	Monaco	0825 03 30 10
	Netherlands	020 6563620
	Norway	815 00 308
	Portugal	707 200 578
Spain	902 200 169 opción 2	
Sweden	0771-17 88 08	
Switzerland	043 299 90 00	
United Kingdom	0870 900 5501	

### Training

If requested, customer training is available by contacting your local Sales Office and may be fee based.

### Product Sustainability

#### Packaging take-back service for Xerox branded products:

Whenever possible, we encourage you to recycle packaging locally as it reduces greenhouse gas emissions associated with transportation. However, if unable to recycle locally, please check with your local sales and service team for recycling instructions.

## Supplies and Consumables

Item	Reorder #	Units per Carton	Yield	Comments
<b>Black Toner Metered - WW</b>	6R01521	1 Cartridge	30K	
<b>Cyan Toner Metered -WW</b>	6R01524	1 Cartridge	34K	
<b>Magenta Toner Metered – WW</b>	6R01523	1 Cartridge	32K	
<b>Yellow Toner Metered - WW</b>	6R01522	1 Cartridge	34K	
<b>Black Toner Sold – NASG, ESG</b>	6R01655	1 Cartridge	30K	
<b>Cyan Toner Sold – NASG, ESG</b>	6R01656	1 Cartridge	34K	
<b>Magenta Toner Sold - NASG, ESG</b>	6R01657	1 Cartridge	32K	
<b>Yellow Toner Sold - NASG, ESG</b>	6R01658	1 Cartridge	34K	
<b>Black Toner Sold. - DMO</b>	6R01659	1 Cartridge	30K	
<b>Cyan Toner Sold - DMO</b>	6R01660	1 Cartridge	34K	
<b>Magenta Toner Sold - DMO</b>	6R01661	1 Cartridge	32K	
<b>Yellow Toner Sold - DMO</b>	6R01662	1 Cartridge	34K	
<b>Black Drum Cartridge</b>	13R00663	1 Cartridge	190K	
<b>Color Drum Cartridge</b>	13R00664	1 Cartridge	85K	
<b>Charge Corotron for Black Drum</b>	13R00650	1 Cartridge	190K	
<b>Fuser (110V)</b>	8R13102	1 Assembly	200K	
<b>Fuser (220V)</b>	8R13065	1 Assembly	200K	
<b>Waste Toner Container</b>	8R12990	1 Cartridge	50K	
<b>Convenience &amp; BR Finisher Staple Cartridge</b>	8R12964	1 Assembly	5K	
<b>Convenience &amp; BR Finisher Staple Refills</b>	8R12941	3 Refills	5K Each	
<b>Booklet Maker Finisher Stapler Refills</b>	8R12925	4 Refills per Carton	5K Each	
<b>Standard/ Booklet Maker Finisher Staples</b>	8R13041	1 Assembly	5K	
<b>BR Booklet Maker Finisher Staple Cartridge</b>	8R13177	1 Assembly	5K	

### Initial Supplies

The product will be delivered with an initial supply of Toner as well as the SMart Kits (the Drum Cartridges).

### Recommended Supplies

The supplies that should be stocked at the customer site in order to perform daily and periodic maintenance and to keep the device printing, will vary depending on monthly print volume, type of maintenance contract, and applications. Check with the local service and sales team for details.

## 4 Installation

### Roles and Responsibilities

This section is key to clearly state Xerox and the customer roles and responsibilities and necessary actions.

#### Responsibility Matrix

Action	Customer	Xerox
Ensure adequate space and power to configure the C60/C70	X	
Unpack system / components		X
Install system hardware		X
Connect all System Components prior to powering up the system		X
Ensure network configuration	X	
Confirm network integrity	X	
Acquire and install client software including print drivers	X	
Configure Workflow Scanning	X	
Run initial software diagnostics when directed	X	
Monitor and adjust as required	X	
Load any additional fonts	X	
Procure BNC transceiver for network connection (if needed)	X	
Order and replace SMart Kits (Drum cartridges, Second Bias Transfer Roll, transfer belt cleaner, and Waste Toner Cartridge, etc.) as needed.	X	
Provide Help Line support		X
Provide spared parts		X
Provide service		X
SIQA (Simple Image Quality Adjustment Tool)	X	

#### Primary customer C60/C70 applications:

---



---



---

#### Special considerations or performance limitations identified by Xerox and agreed to by the customer:

---



---



---

## Connectivity for Remote Services

For Client Review of Expectations for Remote Services:	
1	To the extent necessary to fulfill Services, Customer grants Xerox, without charge, Remote Data Access. Remote Data Access shall be enabled by Customer prior to the commencement of Services via a method prescribed by Xerox and Customer shall cooperate and assist Xerox in providing Remote Data Access. Unless Xerox deems Devices incapable of Remote Data Access, Customer is responsible to ensure that Remote Data Access is maintained at all times Services are being performed, and Xerox will not be responsible for failures to meet service levels where Remote Data Access is not fully maintained by Customer.
2	Upon Xerox's request, Customer shall also provide key contact information, such as IT contact name and phone number for support of their Devices on the their network.
3	Most Xerox equipment is supported and serviced using data that is automatically collected and transferred to Xerox via electronic transmission from equipment through the Customer's network ("Remote Data"). This Remote Data is considered confidential information under the service agreement terms.
4	Remote Data transmitted from Customer may include device information such as registration, meter read, supply level, configuration and settings, software version, and problem/fault code data and may be used by Xerox for billing, report generation, supplies replenishment, support services, on-going and future site optimization opportunities and product improvement purposes.
5	Remote Data Access may also enable Xerox to make available to the customer maintenance releases or upgrades for software or firmware and to remotely diagnose and modify devices to repair and correct faults.
6	Remote Data will be transmitted to a secure off-site location in a secure manner specified by Xerox in accordance with Xerox published policies on information security [at <a href="http://www.xerox.com/information-security/enus.html">http://www.xerox.com/information-security/enus.html</a> ] for your region.
Install Support	
7	<p><b>For Install Support that includes Xerox System Analysts:</b> Customer shall contact and/or be contacted by their Xerox Systems Analyst.</p> <p><b>For Install Support that does not include Xerox System Analysts:</b> Customer shall first utilize their Product System Administrator Guides available at Xerox.com, under the Support and Drivers link and by selecting documentation for their desired product. If unsuccessful, the Customer should go to Xerox.com and select "Technical Product Support" within the "Contacts" link to determine the appropriate contact for further support.</p>
Connectivity Information	
8	See Table Below

Setup Remote Services on Xerox device:			
Use the following to begin the establishment of Remote Services for your new Xerox device. This is not to replace the product System Administrator Guide or Installation Guide but to identify certain install tasks that can be completed before and after the delivery of your device.  In order to take advantage of Xerox offerings, Device Direct and/or Xerox Device Agent (like XDA lite) software must be installed and devices connected and communicating to Xerox. These offerings may include Automatic Meter Reads, Automatic Supplies Replenishment and Remote Diagnostics Support for your device(s).  The following needs to be completed <u>where applicable</u> :	Who?		
	Customer	Professional Services/Partner	Customer Service Engineer
<b>PRE-DELIVERY: Device Networking Tasks:</b>			
1. <b>Non-Production Devices:</b> After signing agreement with Xerox, an email will be sent to you with a web link to download the appropriate software to install on a PC/server that is operational 24/7.	X		
2. <b>Print Driver Software:</b> Go to the "Support and Drivers" link on Xerox.com. If applicable, print drivers will be available to download and install on your client devices.	X		
3. <b>Installation by Professional Services:</b> To ensure Device Remote Connectivity can be established, network data will need to be collected by a Xerox Systems Analyst. A configuration form will be provided and require completion for each device documenting connectivity and network information. Each individual device will require a configuration form, unless all devices are to be configured in the same manner. In those cases, one configuration form along with a list of applicable serial numbers on a separate sheet is acceptable.		X	
4. <b>IT Policy Compliance:</b> You (customer) are responsible for obtaining approval for any internal IT policy compliance required for the Xerox device/software to communicate via your intranet / internet to Xerox.	X		
<b>POST-DELIVERY/INSTALL: Device Networking Tasks:</b>			
5. <b>Ethernet Cable:</b> You (customer) need to provide an Ethernet cable for the device to the network drop. Cable Connection can be completed by customer or installer depending on requirements.	X	X	X
6. <b>Sustaining Connectivity:</b> Remote Connectivity must be maintained to take advantage of Xerox offerings. Offerings include Remote diagnostics, supplies replenishment, and meter reads from appropriate products.	X		

<p><b>7. Device Direct (DD) Communications:</b> Each device will need to be communicating to Xerox through the internet via the Xerox Device Direct method for Remote Diagnostics support. Follow the steps below (customer) to find how to setup Device Direct, if required.</p> <p><b>Setting up Device Direct:</b></p> <p>A) Go to the “Support and Drivers” link on Xerox.com.</p> <ul style="list-style-type: none"> <li>– Search for your product, then click on the Support link for that product.</li> <li>– In the search field, enter “Enroll SMart eSolutions” and follow the instructions provided.</li> </ul> <p>B) If the search does not return any instructions:</p> <ul style="list-style-type: none"> <li>– Click on the Documentation link for your product.</li> <li>– Open the System Administrators Guide and refer to the section of the guide which provides information regarding Smart eSolutions Setup and follow the steps provided.</li> </ul>	X	X	X
---	---	---	---

## Installation Planning

### Main Components

The Xerox Color C60/C70 is delivered with Print Engine, Scanner and Embedded Network Controller

### Module Dimensions

Configuration	Width	Depth	Height	Weight
IOT (Base) (IOT +UI + UI Mtg.)	40.4” 1026.2mm	31.6 ” 803.5mm	54.8” 1391.5mm	578 lbs (557+ 7 +14)
IOT + OCT	62 ” 1574 mm	31.6 ” 803.5mm	54.8” 1391.5mm	591 lbs (578 + 13)
HCF + IOT + OCT	62 ” 1574 mm	31.6 ” 803.5mm	54.8” 1391.5mm	655 lbs (64+578+ 13)
IOT+ BR Finisher	79.1” 2010 mm	31.6 ” 803.5mm	54.8” 1391.5mm	674 lbs (578 + 96)
HCF + IOT +BR Finisher	79.1” 2010 mm	31.6 ” 803.5mm	54.8” 1391.5mm	738 lbs (64 + 578 + 96)
IOT + CZ Folder + BR Finisher	88.3” 2243 mm	31.6 ” 803.5mm	54.8” 1391.5mm	777 lbs (578 + 103 + 96)
HCF + IOT + CZ Folder + BR Finisher	88.3” 2243 mm	31.6 ” 803.5mm	54.8” 1391.5mm	841 lbs (64 + 578 + 103 + 96)
OHCF + IOT +BR Finisher	98.8” 2509 mm	31.6 ” 803.5mm	54.8” 1391.5mm	1026 lbs (352 + 578 + 96)
OHCF + IOT + CZ Folder + BR Finisher	107.9” 2742 mm	31.6 ” 803.5mm	54.8” 1391.5mm	1129 lbs (352 + 578 + 103 + 96)
IOT + BR Booklet Maker Finisher	81.4” 2068 mm	31.6 ” 803.5mm	54.8” 1391.5mm	711 lbs (578 + 133)
HCF + IOT + BR Booklet Maker Finisher	81.4” 2068 mm	31.6 ” 803.5mm	54.8” 1391.5mm	775 lbs (64 + 578 + 133)
IOT + CZ Folder + BR Booklet Maker finisher	90.6” 2301 mm	31.6 ” 803.5mm	54.8” 1391.5mm	878 lbs (578 + 103 + 133)
HCF + IOT + CZ Folder + BR Booklet Maker finisher	90.6” 2301 mm	31.6 ” 803.5mm	54.8” 1391.5mm	942 lbs (64 + 578 + 103 + 133)
OHCF + IOT + BR Booklet Maker Finisher	101” 2567 mm	31.6” 803.5mm	54.8” 1391.5mm	1063 lbs (352 + 578 + 133)
OHCF + IOT + CZ Folder + BR Booklet Maker finisher	110.2” 2800 mm	31.6 ” 803.5mm	54.8” 1391.5mm	1166 lbs (352 + 578 + 103 + 133)
IOT + IFM + Standard (D4) Fin	97.7” 2481.6 mm	31.6 ” 803.5mm	54.8” 1391.5mm	919 lbs (578+110+231)
HCF + IOT + IFM + Standard (D4) Fin	97.7” 2481.6 mm	31.6 ” 803.5mm	54.8” 1391.5mm	983 lbs (64+578+110+231)
IOT + IFM + Booklet Maker Fin (D5)	103.5” 2628.9 mm	31.6 ” 803.5mm	54.8” 1391.5mm	974 lbs (578+110+286)
HCF + IOT + IFM + Booklet Maker Fin (D5)	103.5” 2628.9 mm	31.6” 803.5mm	54.8” 1391.5mm	1038 lbs (64+578+110+286)
HCF + IOT+ IFM + CZ Folder + Standard (D4) Fin	105.7” 2782.5 mm	31.6 ” 803.5mm	54.8” 1391.5mm	1071 lbs (64+578+110+88+231)
OHCF + IOT + IFM + Booklet Maker Fin (D5)	122.9” 3121.7 mm	31.6 ” 803.5 mm	54.8” 1391.5mm	1326 lbs (352+578+110+286)

2T OHCF + IOT + IFM + Booklet Maker Fin (D5)	122.9" 3121.7mm	31.6" 803.5 mm	54.8" 1391.5mm	1392 lbs (418+578+110+286)
OHCF + IOT + IFM + CZ Folder + Booklet Maker Fin (D5)	130.9" 3447.8 mm	31.6 " 803.5 mm	54.8" 1391.5mm	1414 lbs (352+578+110+ 88+ 286)
2T OHCF + IOT + IFM + CZ Folder + Booklet Maker Fin (D5)	130.9" 3447.8 mm	31.6 " 803.5 mm	54.8" 1391.5mm	1486 lbs (418+578+110+ 88+ 286)
HCF + IOT + IFM + GBC + Std Fin (D4)	109.7" 2786.4mm	31.6" 803.5mm	54.8" 1391.5mm	1173 lbs (64+578+110+190+ 231)
OHCF + IOT + IFM + GBC + Std Fin (D4)	129.1" 3279.1mm	31.6" 803.5mm	54.8" 1391.5mm	1461 lbs (352+578+110+190+ 231)
2T OHCF + IOT + IFM + GBC + Std Fin (D4)	129.1" 3279.1mm	31.6" 803.5mm	54.8" 1391.5mm	1527 lbs (418+578+110+190+ 231)
HCF + IOT + IFM +GBC + CZ Folder + Std Fin (D4)	117.7" 2989.6mm	31.6 " 803.5mm	54.8" 1391.5mm	1261 lbs (64+578+110+190+88+231)
OHCF + IOT + IFM +GBC + CZ Folder + Std Fin (D4)	137.1" 4027.2mm	31.6 " 803.5mm	54.8" 1391.5mm	1549 lbs (352+578+110+190+88+231)
2T OHCF + IOT + IFM +GBC + CZ Folder + Std Fin (D4)	137.1" 4027.2mm	31.6 " 803.5mm	54.8" 1391.5mm	1615 lbs (418+578+110+190+88+231)
OHCF + IOT + IFM + GBC + Booklet Maker Fin (D5)	134.9" 3426.5mm	31.6" 803.5mm	54.8" 1391.5mm	1516 lbs (352+578+110+190+286)
2T OHCF + IOT + IFM + GBC + Booklet Maker Fin (D5)	134.9" 3426.5mm	31.6" 803.5mm	54.8" 1391.5mm	1582 lbs (418+578+110+190+286)
OHCF + IOT + IFM +GBC + CZ Folder + Booklet Maker Fin (D5)	142.9" 3629.7mm	31.6 " 803.5mm	54.8" 1391.5mm	1604 lbs (352+578+110+190+88+286)
2T OHCF + IOT + IFM +GBC + CZ Folder + Booklet Maker Fin (D5)	142.9" 3629.7mm	31.6 " 803.5mm	54.8" 1391.5mm	1700 lbs (418+578+110+88+286+220)
HCF + IOT + IFM + Booklet Maker Fin (D5) + SQFT	144.4" 3667.8mm	31.6 " 803.5mm	54.8" 1391.5mm	1273 lbs (64+578+110+286+ 235)
OHCF + IOT + IFM + Booklet Maker Fin (D5) + SQFT	151.8" 3855.7mm	31.6" 803.5mm	54.8" 1391.5mm	1561 lbs (352+578+110+286+ 235)
2T OHCF + IOT + IFM + Booklet Maker Fin (D5) + SQFT	151.8" 3855.7mm	31.6" 803.5mm	54.8" 1391.5mm	1627 lbs (418+578+110+286+ 235)
HCF + IOT + IFM + CZ Folder + Booklet Maker Fin (D5) +SQFT	152.4" 3870.0mm	31.6 " 803.5mm	54.8" 1391.5mm	1361 lbs (64+578+110+88+286+235)
OHCF + IOT + IFM + CZ Folder + Booklet Maker Fin (D5) +SQFT	159.8" 4058.9mm	31.6 " 803.5mm	54.8" 1391.5mm	1649 lbs (352+578+110+88+286+235)
2T OHCF + IOT + IFM + CZ Folder + Booklet Maker Fin (D5) + SQFT	159.8" 4058.9mm	31.6 " 803.5mm	54.8" 1391.5mm	1715 lbs (418+578+110+88+286+235)
OHCF + IOT + IFM + GBC + Booklet Maker Fin (D5) + SQFT	163.8" 4160.5mm	31.6" 803.5mm	54.8" 1391.5mm	1751 lbs (352+578+110+190+286+ 235)
2T OHCF + IOT + IFM + GBC + Booklet Maker Fin (D5) + SQFT	163.8" 4160.5mm	31.6" 803.5mm	54.8" 1391.5mm	1817 lbs (418+578+110+190+286+ 235)
OHCF + IOT + IFM + GBC + CZ Folder + Booklet Maker Fin (D5) + SQFT	171.8" 4343.4mm	31.6 " 803.5mm	54.8" 1391.5mm	1839 lbs (352+578+110+190+88+286+235)
2T OHCF + IOT + IFM + GBC + CZ Folder + Booklet Maker Fin (D5) + SQFT	171.8" 4343.4mm	31.6 " 803.5mm	54.8" 1391.5mm	1905 lbs (418+578+110+190+88+286+235)

<p><b>IOT</b> = Print Engine w/UI and UI Mtg.  <b>OCT</b> = Offset Catch Tray  <b>HCF</b> = High Capacity Feeder  <b>OHCF</b> = Oversize High capacity feeder (1T/2T)  <b>IFM</b> = Interface module  <b>BR Fin</b> = Business Ready Finisher</p>	<p><b>BR Booklet Maker finisher</b>  <b>Standard finisher</b> = D4 Finisher  <b>Booklet Maker finisher</b> = D5 Finisher  <b>CZ Folder</b> = CZ Folder Option  <b>GBC</b> = GBC Hole Punch Unit  <b>SQFT</b> = Square Fold Trimmer</p>
---	--

**Electrical Requirements**

Ground Fault Protection is provided which meets Xerox internal safety requirements and exceeds the Industry Standards for Information Technology Equipment. A single power cord (see above) is required for the C60/C70 series

**\* Note: Please Refer to Detailed Specifications Section on page 3 for appropriate electrical requirements.**

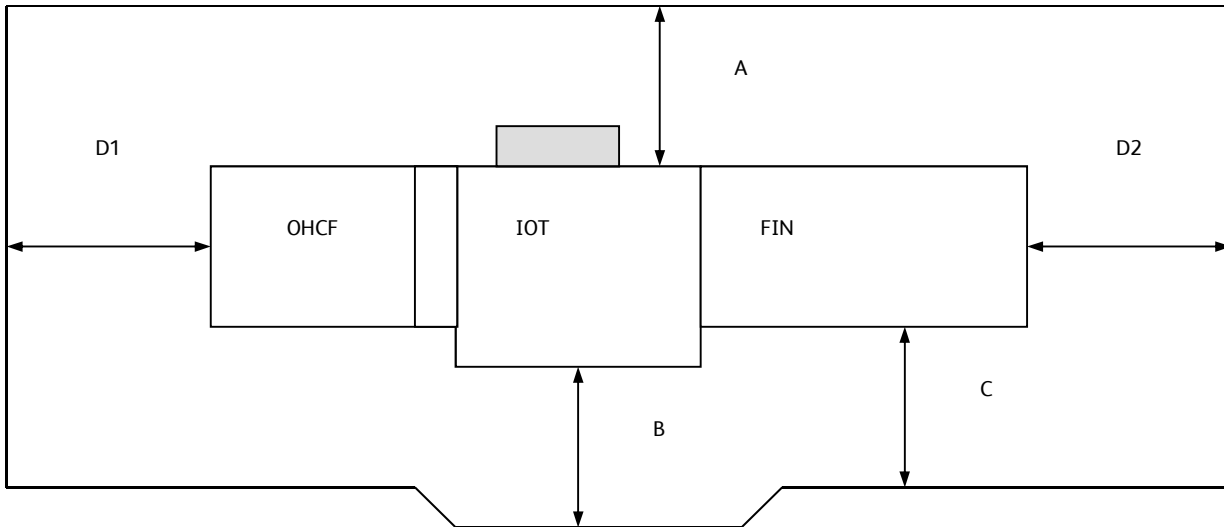


**Space Requirements/ Service Space Envelope**

**Service Envelope for the Xerox® Color C60/C70 Printer**

The dimensions listed below provide the overall service space required, including the space to the nearest obstruction. The dimensions reflect both typical and hallway installations and are absolute minimums.

A minimum of 24 inches (609.6 mm) should be maintained between the back of the machine (Note: not the Xerox Integrated Fiery Color Server, or the Free-Flow Integrated Server if installed) and wall. Installation of the 1- or 2- Tray Oversize High Capacity Feeder and / or Standard Finisher or Business Ready Booklet Maker Finisher results in a stationary system installation.



**Service/Operational Envelope:**  
**Width = D1 + Configuration Dimension + D2**  
**Depth = A + Configuration Depth + B**

	Service / Operational Space	Moveable Installation	Stationary Installation	Comment
<b>A</b>	Rear of Processor / System	10 " 254 mm	24 " 610 mm	
<b>B</b>	Front of main Processor	38 " 965.2 mm	24 " 610 mm	
<b>C</b>	Front of HCF and Finisher / Folder	42 " 1066.8 mm	28 " 711.2 mm	
<b>D1</b>	Left Side of System (w/o Printers servers)	13 " 330 mm	13 " 330 mm	
<b>D2</b>	Right side of System	24 " 610 mm	24 " 610 mm	
<b>E</b>	Allowable Height	78 " 1981 mm	78 " 1981 mm	

## Power Consumption

Power Consumption 110v-127v	C60	C70
Running (Average)		
Base unit	1091 watts	1113 watts
Base unit with Business Ready	1230 watts	1330 watts
Finisher	1230 watts	1330 watts
Base unit with Business Ready Booklet Maker Finisher		
Standby Mode	210 watts	197 watts
Low Power Mode	53 watts	71 watts
Sleep Mode	1.0 watt (Default time to Sleep mode = 2 min.)	
Warm up from Power off	230seconds	
Recovery from Low Power	< 20 sec.	
Recovery from Sleep	< 28 sec.	

Power Consumption 220v-240v	C60	C70
Running (Average)		
Base unit	1110 watts	1140 watts
Base unit with Business Ready	1230 watts	1330 watts
Finisher	1230 watts	1330 watts
Base unit with Business Ready Booklet Maker Finisher		
Standby Mode	218 watts	201 watts
Low Power Mode	100 watts	108 watts
Sleep Mode	1.7 watt (Default time to Sleep mode = 2 min.)	
Warm up from Power off	230seconds	
Recovery from Low Power	< 20 sec.	
Recovery from Sleep	< 28 sec.	

## Installation Considerations

- There should be a minimum of 78 inches (1,981 mm) clearance from the floor to the nearest overhead obstruction.
- The Base Configuration unit weighs about 578lbs
- Electrical requirements and space requirements must be satisfied before the equipment is delivered.
- One network drop is required for installation

## Network Requirements

- The customer is responsible for connecting and configuring the equipment on their network.
- One network drop is required for typical installation.

## Fax Telephone Line Requirements (Optional)

If the fax option is installed, the following telephone line requirements are applicable:  
Telephone wall jack should be within 7' of the middle left side of the back of the unit.

1. Telephone Service Supported:

- Sole-use, non-switchboard (direct dial)
  - RJ11 – 6 position, 4 pin modular jack
  - Single analog line.
2. For three line fax, a third telephone line meeting the requirements identified in items 1 and 2 above is required.
  3. Fax over VOIP is supported

### Convenience Stapler (Optional)

Requires separate outlet from one required for device. Refer to the above product electrical requirements for outlet type and requirements. The same electrical line as the device may be used; if no other devices are present on the line.

### Energy Star

Energy Star is a government-backed program helping businesses and individuals protect the environment through superior energy efficiency. The C60/C70 is 2014 Energy Star certified.

The C60/C70 automatically switches to a Low Power mode after an idle period. After an additional idle period, the machine switches to sleep mode, saving additional power. The customer can adjust the “Time to Low Power mode” and the “Time to Sleep Mode” as described in the documentation.

## 5 Operational Considerations

### Image Quality Expectations

#### Image Quality

The C60/C70 series is designed to produce consistent uniform prints and copies in the product's specified Average Monthly Print Volume range.

The C60/C70 series is designed to produce a uniform image. Image Quality is subjective and can be impacted by lighting, and is strongly influenced by paper (consult the Recommended Materials List).

- The Xerox Color C60/C70 Printer uses a low melt EA toner which is the same type as used by the X700. When compared to the toner currently being used on the DC2XX family - customers will notice lower gloss (consistent to the matte finish of offset prints) and less color saturation (but improved detail in shadows, etc). Should the customer wish to achieve a glossier finish – they can use the enhanced gloss mode to achieve that look– though it may not be as glossy as what they are accustomed to seeing on the DC2XX family. If you plan to run C60/C70 prints through other equipment, it is highly recommended you test the application before committing to the job. Many factors (operating temperature of the fuser, fuser oils, fix reaction of toner/inks) impact the success of running C60/C70 prints in other equipment

### Print Expectations

#### Duplex (2-sided) Copying / Printing

Maximum Auto Duplex Support

Paper Size	Coated	Uncoated
12x18/SRA3	220gsm	220gsm
11x17/A3	220gsm	220gsm
8.5x11 Letter/A4	220gsm	220gsm

- When feeding HW2 and/or coated stock it is highly recommended to feed from tray 5 (Bypass) or trays 6/7 (OHCF) due to the degraded feeding performance of these papers through trays 1-4.
- 8.5x11/A4 may perform better when fed long edge feed (LEF)
- Coated 1 side (C1S) media should not be auto-duplexed
- As with any copier or printer, duplex performance, (coated or uncoated), is not expected to match the performance for single-sided copying. Paper jam rates may be higher than the rate you will experience for the same throughput material in single-sided mode.

#### SIQA- (Simple Image Quality Adjustment toolset)

1. To achieve improved registration results with paper other than centerline paper, Xerox recommends that you use the Simplified Image Quality Adjustment (SIQA) tool to create custom media profiles to a specific tray and paper type by making the front to back registration better aligned.
2. This additional registration tool allows service or users to easily create profiles. The tool can also make Density adjustments inboard/outboard (SMILE Correction).

\*Note: For more information regarding the SIQA tool, please contact your local sales representative or reference the link below: Copy and Paste into your browser:

<http://digitalprinting.blogs.xerox.com/2014/03/03/heres-a-foolproof-method-for-profitable-production-of-business-cards/#.VCGLwssg-1s>

#### USB Print

USB Media Print enables walk-up users to print "Print-Ready" files (PDF, XPS, TIFF, JPEG, TXT) files directly from most standard (FAT-32 formatted) USB Thumb Drives.

Files are sent directly from the USB drive to the print controller.

#### Power On time

Power on time from cold-boot to the display of the main All services screen may take three minutes. Users will notice an additional 5-8 sec delay when they first access a service. Subsequent entries into that service (including after exiting power saver) will not incur any additional delay. This is designed to improve the availability of the first screen as the subsequent services are loaded when first accessed.

### Scanning Expectations

The C60/C70 supports scan to network folder, Scan to USB, Scan to Mailbox, Scan to Home and Scan to email functionality as standard.

#### Scan Resolution

The maximum image scan resolution is 600 dpi. The default scan resolution is set to 200dpi.

Note: Several resolution settings are selectable via the 8.5 inch User Interface touch panel. Lower resolutions will result in files that are smaller in size thereby reducing network traffic.

When scanning the OCR processing, image compression, file formatting and file transfer operations all continue after the job has completed scanning by the scanner.

Heavy print usage may delay the processing of scan jobs.

### Non-standard Paper Sizes

Plain paper with a feed length below 5.5in may jam more frequently. Select media between 257-300gsm are supported, please see Recommended Materials List for further details.

- Recommended paper to maximize image quality and product reliability is Xerox Color Xpressions Select 24lb or Xerox Colotech+ 90gsm (smooth bright white paper). This paper is specifically designed to maximize image quality and machine performance over a wide range of environmental conditions.
- Using coated (e.g., gloss, matte coated or photo finished / proofing) and/ or Cardstock (i.e., >90lb Index / 164 gsm) stock may result in degraded reliability performance. Customers using these materials exclusively or extensively will see decreased performance as it relates to image quality and product reliability.
- Attempts to feed heavier than recommended paper stocks, and/or misuse of the media settings, may cause machine damage or poor image quality. Using media at run modes other than that recommended for the grade may cause poor image quality and machine damage.
- Envelope printing should not be used as a primary application
- Envelopes without windows are supported through the bypass tray in sizes Monarch, DL, C5, and No 10 (other custom sizes are supported as well). Envelope feeding reliability is highly dependent on the envelope used and the area coverage of the image being affixed to the envelope.

## Service Uptime

- The number of copies or prints between service calls on a digital copier / printer is highly dependent on customer expectations of quality and the use of applications and throughput materials.

## Solutions

- Full list of supported solutions can be found at [www.office.xerox.com/software-solutions](http://www.office.xerox.com/software-solutions)

Operational Definitions	
1-Sided	Printing on only one side of the substrate
2-Sided	Printing on both sides of the substrate
AMPV	Average Monthly Print Volume - reflects a range of an entire machine population's monthly usage, while Duty Cycle displays the potential to grow while still utilizing the machine.
Daily Maintenance	Maintenance that the customer operator must complete daily to maintain quality printing
Delta E	The measurement of color variation, there are multiple
DPI	Dots Per Inch or physical resolution of the printing device
Duplex	Printing on both sides of the substrate
Duty Cycle	A print device's rated capacity to continuously perform work under normal conditions. It is usually expressed as the sustainable volume in letter- or A4-sized pages that can be printed per month.
GSM	Grams per Square meter – Paper density (also known as basis weight and grammage)
Image Registration	The alignment of the individual CMYK image to each other on the printed piece
Lbs.	Pounds - US paper sizes is pounds of a ream of 500 (or in some cases 1000) sheets of a given (raw, still uncut) basis size – heavier stocks have a higher lb
Maximum Paper Size	Largest substrate that can be physically run through the device
Maximum Print Area	Largest area that can be printed on a substrate
Media/Substrate	The material that can be imaged through a device (e.g. uncoated, coated, cover stock, transparency, etc.)
Multi-Function Printer/Copier	A device that can be A4 or A3 with capabilities of scan, fax, email, and can be integrated with multiple solutions
Operator Maintenance	Maintenance tasks the customer is responsible to complete
Paper Registration	The placement/alignment of the image on the sheet and sheet to sheet
Periodic Maintenance	Maintenance that occurs based on print volume
Press	Relates to production devices (graphic communications) concerned with high production and high image/color quality requirements
Preventative Maintenance	Any actions that are taken to prevent downtime and maintains quality printing
Print Quality	The characteristic of printed material evaluated in terms of color, register, clarity, and the degree to which it resembles the original image.
Print Speed	The rated speed that a device can print
Printer	A smaller device (usually A4) that relates to the office side of the business
Simplex	Printing on only one side of the substrate
Uptime	The time that the device is available for printing
Virus Security	Protection for multifunction printers similar to how you protect PCs from viruses and malware, and control access to end points on your network – making your multifunction printer a fully secured network citizen.



# Appendix

**Links:** (Paste into your browser)

Detailed Specifications

<http://www.xerox.com/digital-printing/latest/X60SS-01U.pdf>

Brochure

<http://www.xerox.com/digital-printing/latest/X60BR-01U.pdf>

Certifications

<http://www.xerox.com/digital-printing/latest/XOGFS-14U.pdf>

Solutions

<http://www.xerox.com/digital-printing/latest/SO1FS-03U.pdf>

Xerox Integrated Color Server

<http://www.xerox.com/digital-printing/latest/X60FS-03U.pdf>

Xerox Exi C60/C70 Print Server Powered by Fiery

<http://www.xerox.com/digital-printing/latest/X60FS-02U.pdf>

Xerox Ex C60/C70 Print Server Powered by Fiery

<http://www.xerox.com/digital-printing/latest/X60FS-01U.pdf>

Xerox Free Flow Print Server for C60/C70

<http://www.xerox.com/digital-printing/latest/X60SS-02U.pdf>

## Customer Agreement

**I have reviewed this CEIG document and understand the specifications listed:**

---

Customer

---

Xerox Sales Representative

---

Xerox Customer Service Representative