

COLLEGE of
CHARLESTON

FOLLOW YOUR



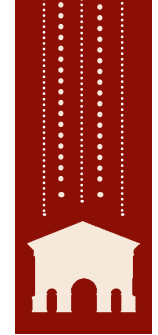
| 2012 DONOR REPORT |



COLLEGE OF CHARLESTON

CONTENTS

3	Letter from P. George Benson President of the College of Charleston
4	By the Numbers Supporting the College: A summary of your giving
6	Impact Spotlights Impacting the campus, state and world through philanthropy
15	Happenings Celebrating philanthropy and our donors throughout the year
16	1770 Society Recognizing annual leadership giving to the College
24	GOLD (Graduates of the Last Decade) Society Recognizing young alumni annual leadership giving
25	Live Oak Society Recognizing our most loyal and consistent donors
34	Cistern Society Recognizing our estate donors
35	In Tribute Recognizing honored individuals and tribute donors
39	2012 College of Charleston Boards
40	Contact Us



giving.cofc.edu



PRESIDENT BENSON SERVING PANCAKES TO STUDENTS LAST FALL DURING FINAL EXAMS.



PRESIDENT BENSON WITH JEWISH STUDENT UNION/HILLEL LEADERSHIP AT THE JEWISH STUDIES WELCOME COOKOUT.



RUS AND SHARON BROCK KINGMAN 1980 (FOUNDATION BOARD CHAIR) AND PRESIDENT BENSON.



(FRONT) REBA AND HARRY HUGES; (BACK) SUE SOMMER-KRESSE, TRISHA FOLDS-BENNETT, GERHARD MACK, PRESIDENT BENSON, GEORGE HYND AND VALERIE MORRIS CELEBRATING THE HUGES' RECENT COMMITMENT. SEE PAGE 13 FOR DETAILS ABOUT THE HUGES' GENEROUS GIFT.



TO OUR COLLEGE OF CHARLESTON COMMUNITY:

I'm pleased to present the College of Charleston 2012 Donor Report. In 2012, the College continued to make progress in growing and sustaining a culture of philanthropy and becoming a national university with a global reach.

We established many new high-water marks in 2012, including records in fundraising, in student applications and in students studying abroad. In addition, we began our transition to the Colonial Athletic Association, a move that will create many new athletic, academic and professional development opportunities for our students, faculty and staff.

We owe much of our success to you. The impact of your giving is evident all across our campus, from scholarships to the continued growth of our Jewish Studies Program, to exciting new academic initiatives in our School of Business. You can read more about these and other philanthropic highlights from 2012 on the following pages.

As philanthropy continues to become more ingrained in our campus culture, we are seeing an unprecedented level of engagement among our donors and supporters. In 2012, total giving reached \$16 million, representing a 60 percent increase over 2011 and marking the fifth consecutive year that we have increased our giving totals. Of the \$16 million, \$2.7 million was raised through our 13 annual giving funds, including significant increases in alumni and parent giving. These upward trends are exactly what we want to see as we prepare to launch our national comprehensive campaign this fall.

To bolster the success of our campaign, we have established a Comprehensive Campaign Steering Committee. This volunteer group of donors will help to advance the campaign, act as champions for the College and help secure leadership gifts. I am so pleased that alumnus Steve Swanson, Class of 1989, will join me in co-chairing this campaign. You can read more about Steve and his wife, Emily, Class of 1989, on page 6. With the help of this esteemed group of leaders - along with the enthusiastic engagement of our faculty, staff, students, alumni, parents and many friends - I am confident we will reach our goals for the campaign.

Thank you for your support and thank you for believing in our vision for the future of the College of Charleston.

Sincerely,

A handwritten signature in blue ink that reads "P. George Benson".

P. George Benson
President

BY THE NUMBERS

In 2012, donors made the College of Charleston a philanthropic priority in a number of ways. Once again, the College benefited from a year of generous giving from alumni, students, parents, friends, corporations and foundations that supported the College with annual, endowment, capital, programmatic and estate gifts. Thanks to your commitment, your vote of confidence and your generosity to the College, 2012 was a significant year of accomplishments.

SAILORS ALI BLUMENTHAL AND BEN SPECTOR ARE MEMBERS OF THE COFC HISSAR SAILING PROGRAM'S 2012 NATIONAL CHAMPIONSHIP TEAM.



2012 FUNDRAISING SUMMARY

\$16
million
TOTAL NEW COMMITMENTS

\$8.5
million
PLEDGES

\$5.3
million
GIFTS OF CASH & STOCK

\$1.5
million
ESTATE INTENTIONS

\$.7
million
IN-KIND GIFTS

2012 ANNUAL GIVING FUNDS

\$2.7 million*

college of charleston + parents' fund
\$1.2M

cougar club
\$900K

school-based & unit funds
\$600K

*Cash received

DESIGNATION OF TOTAL NEW COMMITMENTS

\$16 million

FACILITY ENHANCEMENTS **\$940K**

ANNUAL GIVING FUNDS **\$3.4M**

SCHOLARSHIPS **\$5.7M**

PROGRAMS AND FACULTY SUPPORT **\$5.9M**

IMPACT SPOTLIGHTS

Each year, private support to the College of Charleston plays a critical role in preserving the College's place as one of the nation's best public liberal arts and sciences universities for quality education, student life and affordability. Private philanthropy touches every corner of campus, from student scholarships and research funds for faculty to innovative technology. **The impact of your gifts reaches across South Carolina and the world. Meet the students, faculty, programs and places impacted by your gifts.**

ALUMNI STEVE 1989 AND EMILY SWANSON 1989 ESTABLISH MERIT-BASED HONORS COLLEGE SCHOLARSHIPS

Charleston entrepreneur Steve Swanson and his wife, Emily, committed \$2.25 million to the College of Charleston last spring, the largest alumni gift in the school's history. The gift will be used to establish merit-based scholarships in the Honors College to attract the best and brightest students from across the country.

"I received a full scholarship to the College. So, it seems utterly natural to give back to the school that gave me so much. The College of Charleston changed our lives, and Emily and I hope to change the lives of these students through our scholarships."

- Steve Swanson



\$1M GIFT EXPANDS JEWISH STUDIES CENTER

The College of Charleston Foundation received a \$1 million pledge from a group of donors in support of the expansion of the Sylvia Vlosky Yaschik Jewish Studies Center. The expansion will include space for a vegetarian dining facility with fish and vegan options, thereby meeting the needs of ethical eaters; those looking for delicious, healthy meals; and kosher-observant students. Donors Norman and Gerry Sue Arnold of Columbia, S.C., Anita Zucker of Charleston, S.C., Alan Kahn of Columbia, S.C., and Art and Annie Sandler of Virginia Beach, V.A., requested the dining facility be named in honor of Jewish Studies program director, Martin Perlmutter.



“The Jewish Studies program is certainly one of the best in the country, and that is the result of the leadership of Marty Perlmutter. It was so natural for us to support this project and that the facility honor Marty’s unyielding dedication to the program and to fostering community.” – Norman Arnold

ANDERSON ALUMNI SCHOLARSHIP ANNOUNCED AT 2012 ALUMNI AWARDS GALA

The James P. and Carolyn N. Anderson Endowed Alumni Scholarship was announced (as a surprise) by Alumni Association President Chuck Baker 1980.

Established by sons Philip Anderson 1981 and Joseph B. Anderson 1986, the scholarship honors their parents, Jim 1955 and Carolyn Anderson 1970.

Both Jim and Carolyn dedicated their lives to teaching and always give education high priority.



KANAPAUX-MAGRATH ESTATE GIFT PROVIDES VITAL FINANCIAL- NEED SCHOLARSHIPS

Margaret “Peggy” Kanapaux Sullivan 1939 believed in making the most of time and education. After graduating from the College, Sullivan served in World War II as a member of the Navy’s first class of WAVES (Women Accepted for Volunteer Emergency Service). Before her death in 1998, Sullivan endowed the Kanapaux-Magrath scholarships. 2012 scholarship recipient Elizabeth Burdette traveled to Tegucigalpa, Honduras to work at the LAMB (Latin America Missionary and Bible) Institute. It was there Burdette discovered a passion for women’s rights.





PARENTS HONOR SON AND HIS PASSION FOR ARCHAEOLOGY

Thomas and Margaret Newbern established the T. Miles Newbern Endowed Memorial Scholarship in honor of their beloved son, Miles, who passed away in 2012. Miles had a great love for the College of Charleston as well as for the city of Charleston. Pursuing a major in history and a minor in archaeology, Miles participated in the excavation of the Anthony Ashley Cooper Settlement site during a summer field school. He loved being outdoors and seemed to truly enjoy holding history in his hands.

“We thought aiding these field schools in a small way would be a very appropriate way to honor Miles and help other young people experience something he truly enjoyed.”

- Thomas and Margaret Newbern

CIGANOVIC MEMORIAL SCHOLARSHIP HONORS SPECIAL NEEDS TEACHERS

Denny Ciganovic, director of the College’s Career Center, and his wife, Kay established the Matthew Scott Ciganovic Endowed Memorial Scholarship to commemorate their son, who died from complications of Duchenne muscular dystrophy. Awarded annually to a senior or M.A.T. teacher education candidate committed to helping special needs children, the scholarship is meant to ease students’ financial burden during their clinical practice semester - and, hope the Ciganovics, have a positive impact both on the recipients and on the children they go on to teach.



SCI-FI MASTERMIND’S ARTIFACTS DONATED TO LIBRARY

Recognized as one of the most prolific and influential fantasy writers of our time, James O. Rigney Jr. (whose nom de plume was Robert Jordan) created a richly detailed and vividly imagined series that has captivated readers around the globe. Harriet McDougal, James Rigney’s widow, donated a collection of Rigney artifacts to the College of Charleston last fall. The collection includes early and edited manuscripts, handwritten notes and photographs, swords and scabbards, video interviews, an early Apple computer loaded with 4,000 pages of Rigney’s notes, and first editions of his works in dozens of languages.



“I wanted the papers to be in the college community. Once the collection is processed, researchers, students and fans will have an insider’s look into one of the most legendary epic fantasy series.” - Harriet McDougal



SCHOLARSHIP PAYS TRIBUTE TO INAUGURAL HONORS COLLEGE DEAN

The John Newell Endowed Honors Scholarship Fund was established by the Honors College Advisory Board to recognize John Newell's leadership as inaugural dean of the Honors College. As dean for more than 13 years, Newell transitioned the then small, distinguished Honors program to a nationally-celebrated Honors College. Today, the Honors College receives more than 1,300 applications for an incoming freshman class of 200. The John Newell Scholarship recipient must be a resident of South Carolina and have an interest in a humanities discipline.



\$2M GIFT SUPPORTS SCHOLARSHIP AND JEWISH STUDENT LIFE

Starting in fall 2013, children of clergy and religious educators of any faith will be eligible for a four-year full-tuition scholarship to the College of Charleston, thanks to a \$1 million pledge from Samuel R. and Regina K. Shapiro last fall. The Shapiros also pledged \$1 million to support the College's Jewish student life program. The gift will expand vital student community outreach and volunteer projects such as Alternative Spring Breaks, outreach to less privileged youth in Charleston, and student trips to Israel.

“The Yaschik/Arnold Jewish Studies Program is the hub of Jewish student life at the College of Charleston. This generous gift from Sam and Gina Shapiro will allow us to further expand the program and make it more accessible to greater numbers of students.”

- President George Benson

ARBORGEN DONATES 75,000 LONGLEAF PINE SEEDLINGS TO SUPPORT FOREST RESTORATION AT DIXIE PLANTATION

ArborGen, the world leader in the development and commercialization of technologies that improve the productivity of trees, announced on Arbor Day in December that it has formed a long-term partnership with the College of Charleston Foundation to support its forest conservation and restoration efforts at Dixie Plantation. In a show of support, ArborGen donated 75,000 Longleaf Pine seedlings, which were planted during the winter on 144 acres of Dixie Plantation.

“As a company dedicated to advancements in forestry, we commend the College of Charleston Foundation for doing a tremendous job preserving Dixie Plantation, and we are pleased to be a partner in the restoration efforts.”

- Andrew Baum, president and chief executive officer of ArborGen

“We believe it is important to establish with graduating seniors the philosophy of philanthropy. Giving back to your alma mater, even in small amounts, gets us in the habit of making the College a priority. I was lucky enough to attend the College on multiple scholarships; I may not have been able to come to CofC without them. I was able to attend because other alumni made it a priority to give back, and I believe in paying it forward.” - Johnnie Baxley



ALUMNUS JOHNNIE BAXLEY 1992 OFFERS SENIOR CLASS CHALLENGE

Some might wonder why a class of 1992 alumnus is giving a matching gift to support the 2013 senior class gift. Johnnie Baxley and his wife, Michelle, have challenged the 2013 class to raise at least \$5,000 toward the College of Charleston Fund. In fact, they have challenged senior classes for the next five years. The Class of 2013 is already well over halfway to the \$5,000 goal with gifts from more than 220 seniors! With most of the spring semester still to go, this senior class looks poised to meet the Baxley Challenge!

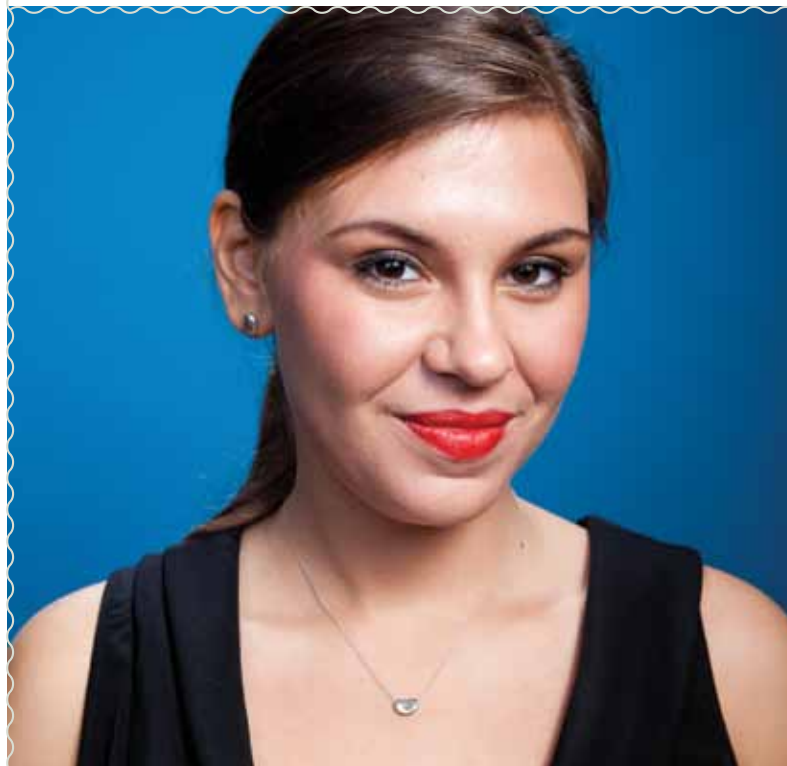


KERRIGAN GIFT TO LAUNCH INVESTMENT PROGRAMS AT SCHOOL OF BUSINESS

As a part of an \$800,000 commitment to the College, Steve and Maureen Kerrigan pledged to fund the creation of an investment program within the undergraduate finance major in the School of Business. Through the program, College of Charleston students will receive relevant experience in the public market and private equity investment industries and will have the opportunity to drive decisions about the investment of real money. The Kerrigans' commitment also generously supports the Bonner Leaders Program, the Cougar Club, the men's basketball program and the College of Charleston Fund.

LETTIE PATE WHITEHEAD FOUNDATION SUPPORTS SCHOLARSHIPS

The Lettie Pate Whitehead Foundation has been one of the College's most generous scholarship supporters. Since 1987, the Lettie Pate Whitehead Foundation has committed more than \$1.13 million in need-based scholarship support to qualifying students from Alabama, Florida, Georgia, Louisiana, Mississippi, North Carolina, South Carolina, Tennessee and Virginia. For the 2011-2012 academic year, the Lettie Pate Whitehead Foundation provided 43 scholarships.



COLLEGE OF CHARLESTON FUND SCHOLARSHIP RECIPIENT DISCOVERS PASSION FOR POLITICS

The College of Charleston Fund and the Parents' Fund raised more than \$1.2 million in 2012. The funds are the primary channels for alumni and parents to support scholarships, faculty and the Alumni Association. Mallen Urso and more than 200 other students attend the College with the help of a scholarship from the College of Charleston Fund. Urso, who discovered a passion for politics her sophomore year after working with political science professor Lynne Ford, hopes to move to the nation's capital to dive deeper into politics upon graduation this spring.

BMW SUPPORTS COLLEGE'S LOGISTICS ADVANTAGE PROGRAM FUND

BMW established the BMW Logistics Advantage Program in the School of Business to provide experiential learning opportunities in the Global Logistics and Transportation Program. Student participation will include a travel-study in The Netherlands, where they will explore one of the largest ports in the world (Rotterdam) and take specialized coursework focusing on global logistics, intermodal transportation and supply chain management.



FACULTY/STAFF GIVING GROWS THIRD YEAR IN A ROW

For a third year in a row, faculty/staff giving increased at the College - raising more than \$240,000 from 500 donors. As a token of appreciation, the College's annual giving office, in partnership with Starbucks, provided faculty/staff donors with travel coffee mugs and a month's worth of free coffee in November.



“What I love most about teaching is building relationships with the kids and watching them make big gains. With social studies, I enjoy watching them question the world around them.”

- Zac Viscidi, seventh grade social studies teacher, Sanders-Clyde Creative Arts School

VISCIDI SCHOLARSHIP CELEBRATES EDUCATION

Phyllis and Philip Viscidi, whose son Zac graduated from the College of Charleston in 2010 with a degree in middle grades education, established the Viscidi Family Endowed Scholarship Fund in honor of Fran Welch, dean of the School of Education, Health, and Human Performance. Zac, a teacher at Charleston's Sanders-Clyde Creative Arts School, inspired his parents to establish the scholarship to assist students who demonstrate financial need in pursuing their educational dreams.

“The life-changing experience of studying abroad allows our students to develop a broader perspective of the world and its cultures – a valuable asset in today’s job market.”

– George Hynd, provost and executive vice president for academic affairs

HARRY AND REBA HUGE FOUNDATION ESTABLISHES HONORS COLLEGE, STUDY-ABROAD AND MUSIC SCHOLARSHIPS

In today’s global society, gaining an understanding of the world through international experience is an increasingly vital element of a college education. The Harry and Reba Huge Foundation established four annual study-abroad scholarships for students at the College of Charleston. Their \$500,000 gift will also support four merit scholarships in the Honors College and a music scholarship in the School of the Arts.



COLLEGE OF CHARLESTON

ALUMNI SCHOLARSHIP SUPPORTS NEXT GENERATION OF HEALTHCARE PROFESSIONALS

The J. Gorman 1943 and Gladys Thomas Endowed Memorial Alumni Scholarship is awarded by the Alumni Association to students who intend to practice in the healthcare professions and are members Alpha Epsilon Delta Society, the national society for healthcare pre-professionals. J. Gorman Thomas Jr. was a proud graduate of the Class of 1943, majoring in economics and French. He was also a member of the basketball team during his four years at the College. His love of sports and his 1943 class ring were passed down to his son, Gary W. Thomas 1983, who set up the scholarship to honor his parents. The first recipient, Jeremy Olsen 2013, spent last summer working in Africa in a mobile healthcare facility.

“As a clinical intern at St. Andrew’s School of Math and Science, Matthew spent countless hours in the classroom, planning, working with parents and students, and gaining invaluable experiences for his future as an educator. The scholarship meant Matthew could focus on his students and on his development as a teacher without having to worry about tuition expenses.”

– Fran Welch, dean of School of Education, Health, and Human Performance



JEREMY WARREN VANN SCHOLARSHIP GALA DRAWS BIG CROWD

The fifth annual Jeremy’s Scholarship Gala, a fundraising event to benefit aspiring teachers, was held in 2012. The event is hosted by the College of Charleston’s School of Education, Health, and Human Performance and the Chuck and Sara Calhoun Davis Foundation. The Davis Foundation also contributed more than \$178,000 to the College of Charleston this year in support of the scholarship. To date, 22 students have received scholarships from the Davis Foundation, which funds tuition during their clinical internships.



BARNET COURTYARD OPENS SPRING 2012

The Barnet Courtyard, located near the Simons Center for the Arts, officially opened in April 2012. The garden is named for Bill and Valerie Barnet 1984, strong supporters of the arts and the College of Charleston. The first event hosted in Barnet Courtyard was the GOLD (Graduates of the Last Decade) Society donor recognition reception in May 2012.

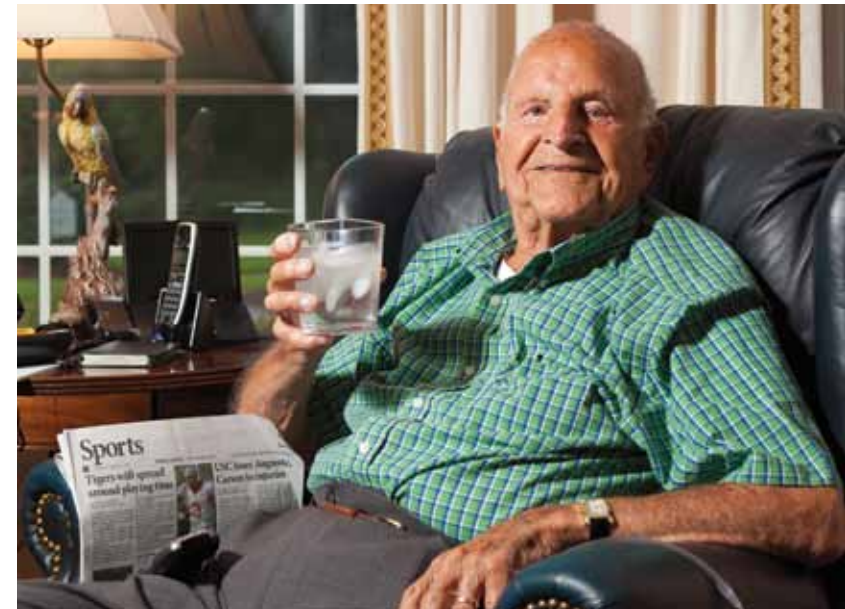
“Bill and I are passionate about supporting the arts and arts education. We hope that our donation will be an extension of the Marion and Wayland H. Cato Jr. Center for the Arts - a place for everything from quiet relaxation and reflection to artistic creation and expression.”

- Valerie Barnet



CELEBRATING THE LEGACY OF TED STERN

The man often credited with guiding the College of Charleston to where it is today, 16th president Theodore S. Stern, celebrated his 100th birthday on December 25, 2012. Three weeks later, on January 18, 2013, Stern passed away. The College of Charleston Foundation commissioned a biography, to be published in 2013, celebrating Dr. Stern's life. Author Bob MacDonald chronicles Stern's life from career naval officer to College president and beyond. Stern will forever be a source of strength and wisdom at the College of Charleston and for the city of Charleston.





More than 3,500 seniors and alumni came together at A Charleston Affair on May 5, 2012.



Jeremy Olsen 2013 and E. Chandler Miler 2014 at the Alumni Scholars Reception.



Andrew Lewis and Sarah Lynn Gainey 1966 at the Cistern Society Luncheon.



Joe Riley III, scholarship recipient Aaron Gruber 2012 and Kirk Gruber at the Gavalas-Kolanko Foundation Scholarship Reception.



Senior leadership join Foundation Board Co-chair Hilton Smith and Alan Sea 2011 to celebrate the opening of an ADA-compliant elevator lift at the Blacklock House.



Maddie Wilson, Claire Joseph, and Amy and George Joseph at the First Lady's Reception for Spring Commencement.



Former Foundation Board Chair Gus Gustafson 1975 and Foundation Executive Director George P. Watt Jr. share a laugh with Clyde at a men's basketball pre-game celebration.



Julie Spell Roberts 1984 and Toby Roberts with Dendy and Rallis Pappas 1978 at the spring Parent Advisory Council Reception.



1770 SOCIETY

Taking its name from the year that the College of Charleston was founded, the **1770 Society** celebrates alumni, parents, faculty, staff, students, friends, corporations and foundation partners who contribute \$1,000 or more each year to the College. 1770 Society donors provide leadership in their designation of annual support across campus. Gifts at the 1770 Society-level fund scholarships, leadership-based student programming, athletics, research initiatives and ground-breaking technology in the arts and sciences.

FALL RECOGNITION RECEPTION
AT RIVERS GREEN.



KINGMAN SCHOLARSHIP RECIPIENT
MARK KADOSHNIKOV 2013,
PRESIDENT GEORGE BENSON AND
FOUNDATION BOARD CHAIR SHARON
BROCK KINGMAN 1980 ENJOY THE
FALL RECOGNITION RECEPTION.



COLLEGE OF CHARLESTON

\$500,000+

Individual Donors

Frances Lindner and S. Craig Lindner
Emily Molony Swanson 1989 and
Steve Dean Swanson 1989

Corporate and Foundation Partners

The Spaulding-Paolozzi Foundation
The Swanson Family Foundation

\$100,000 - \$499,999

Individual Donors

Gerry Sue Arnold and Norman J. Arnold
Betty Beatty and Guy E. Beatty
Judith Cato
Sara Calhoun Davis and Chuck Davis, Jr.
Reba Kinne Huges and Harry Huges
Deborah H. Imperatore and Harold J. Imperatore
Harriet P. McDougal
Regina K. Shapiro and Samuel R. Shapiro
Anita Zucker

Corporate and Foundation Partners

Norman J. Arnold Charitable Foundation
Beatty Realty Company
The Boeing Company
Edgar T. Cato Foundation
The Chuck and Sara Calhoun Davis Foundation
Gaylord and Dorothy Donnelley Foundation
Samuel Freeman Charitable Trust
Jewish Studies Center, Inc.
Estate of Katherine B. Kerr
The Andrew W. Mellon Foundation
Charles Stewart Mott Foundation
TD Charitable Foundation

\$50,000 - \$99,999

Individual Donors

Maureen Chilton and Richard L. Chilton, Jr.
Dianne M. Culhane and John J. Culhane
Martha Dalton and Mark E. Cerasano
Rose Dana and Charles Dana
Georgina Goldsmith and Raymond Goldsmith
Margaret Newbern and Thomas Newbern
Susan F. Schottland and Peter B. Schottland
Nancye B. Starnes and David P. Hughes
Gail G. Williams

Corporate and Foundation Partners

BB&T
BMW Corporation
Coastal Community Foundation of SC
The Kite Foundation
Michelin North America, Inc.
Post and Courier Foundation
The George Stern & Sara Stern Foundation
Lettie Pate Whitehead Foundation
The Henry and Sylvia Yaschik Foundation, Inc.

\$25,000 - \$49,999

Individual Donors

Anonymous (3)
Christina Brown and Kenneth M. Brown
Birgitta Gaud and William Steen Gaud 1965
Robert Holt 1981
Maureen W. Kerrigan and Stephen R. Kerrigan
Susan Knox and David A. Knox
Michael S. Kogan
Karen A. Lawson-Johnston and Peter
O. Lawson-Johnston II
Justin R. McLain 1997
Maria O. O'Boyle and James E. O'Boyle
Mary S. Phipps and Howard Phipps, Jr.
John Minott Rivers, Jr.
Hellene S. Runtagh
Catherine Small and Robert S. Small, Jr.
Charles T. Summers
Gary Walsh Thomas 1983
Frederica Valanos and George Valanos
Vasiliki Valanos and John Valanos
Phyllis Viscidi and Philip Viscidi

Corporate and Foundation Partners

ARAMARK Corporation
The Estate of Florence S. Atkinson
Bessemer Trust Company
BiblioLabs, LLC
The Brand Foundation of New York
Estes Express Lines, Inc.
The Thomas F. and Patricia H. Farrow Charitable Trust
Foundation For The Carolinas
Peter R. & Cynthia K. Kellogg Foundation
Estate of Katharine C. Knott
Charles G. Koch Charitable Foundation
Estate of Roderick S. Quiroz
The John M. Rivers, Jr. Foundation, Inc.
Thomas Small Foundation



\$10,000 - \$24,000**Individual Donors**

Anonymous (3)
 Anonymous Fund of Central Carolina
 Community Foundation
 Vickie Baker and Tommy B. Baker
 Nella Gray Barkley
 Michelle C. Baxley and Johnnie
 W. Baxley III 1992
 Judith P. Buono and Mark J. Buono 1981
 Walter M. Cain 1982
 Andree M. Caldwell
 Kay Ciganovic and Denny D. Ciganovic
 Margaret Cochrane and Luther P. Cochrane
 Elizabeth Culbertson and John H. Culbertson, Jr.
 Karen Davis and Richard H. Davis
 Sara Givler DeWolf 2002 and
 Benjamin Karel DeWolf 2002
 Jean R. Feldman and John R. Feldman
 Carol Fishman and Leo Fishman
 R. Pringle Pipkin Franklin and
 Samuel C. Franklin, Jr.
 Katie Stern and Edward Friedland
 Kristie Gibson and John W. Gibson
 Nancy Gorski and Paul T. Gorski
 Mary Heidi Hall-Jones
 Sarah Permenter Hays 2003 and
 Joshua J. Hays 2003
 Ann Higdon and Leo I. Higdon, Jr.
 Beth Holder and Thomas M. Holder
 Hank Holliday III
 Jean W. Johnson and Tapley O. Johnson, Jr.
 Mary B. Jordan
 Amy F. Joseph and George Joseph
 Pamela Kaplan and Stanley Martin Kaplan
 Sharon Brock Kingman 1980
 and Russell Kingman
 Janet Leeds and Robert Leeds
 Patricia Legasey and Edward E. Legasey
 Carol S. Levine and Michael Levine
 Nancy S. Longfield and William H. Longfield
 Catherine Marino
 Lorna F. Meyer
 Lissy L. Morgan and David L. Morgan
 Lily Harriman Mortimer 2012
 Karen L. New and Marc D. New 1984
 Lyric P. Ogden and Ralph L. Ogden*
 Susan Pearlstine
 Stephen Knight Pond
 Margaret M. Powell and John E. Powell
 Marygrace Redfern and James F. Redfern

Jennifer Sanford
 Melissa Garrison Sauls 1990 and
 Richard Keith Sauls 1990
 Nella Barkley Schools 1986 and
 David R. Schools 1984
 Mindelle Kaplan Seltzer and Norton M. Seltzer*
 Karen Siegel and Robert C. Siegel
 Kaye Smith and T. Scott Smith
 Nancy F. Smith and Turner C. Smith
 Susan Stern and Arthur Stern
 Jane Stern and James A. Stern
 Sydney Stern and Jonathan Stern
 Andrea L. Volpe
 Terri A. Walker and Christopher E. Walker
 Laura Ricciardelli-Watt and David R. Watt
 Belinda Broido and Jeffrey Michael Weingarten
 Tomi G. Youngblood and M. William Youngblood
 John A. Zeigler, Jr.

**Corporate and
Foundation Partners**

4 Spine, Inc.
 Acorn Hill Foundation, Inc.
 Anonymous (3)
 Atlas Economic Research Foundation
 Louis F. & Virginia C. Bantle
 Charitable Foundation, Inc.
 Benwood Foundation
 The Bishop Family Foundation
 Charleston Wine + Food Festival
 City Market Hotel Associates, LLC
 The Charles A. Dana Foundation
 Dixon Hughes Goodman Foundation Inc.
 The Oliver S. and Jennie R.
 Donaldson Charitable Trust
 Elms Digestive Disease Specialist
 Family Circle Cup
 The Farmer Family Foundation
 The Gavalas-Kolanko Foundation
 The Golden Pearl Foundation
 Herzman-Fishman Foundation
 Hibernian Society Foundation
 The Knox Foundation
 Litton Entertainment
 MeadWestvaco Community Development
 and Land Management Group
 MeadWestvaco Corporation
 Nature's Calling
 Palmetto Exterminators, Inc.
 Piggly Wiggly Carolina Co., Inc.
 Charles Baker Powell Trust
 Raven Cliff Company

South Carolina Council on The Holocaust
 The Estate of Margaret K. Sullivan
 TD Bank
 The Community Foundation Serving
 Richmond and Central Virginia
 Todd Minikus, Ltd.
 Vanguard Charitable Endowment Program
 Wells Fargo
 Wells Fargo Foundation

\$5,000 - \$9,999**Individual Donors**

Ilonka S. Adbo
 Marlene Alfred Addlestone 1964
 and Lawrence Bursten
 Carolyn Nesbitt Anderson 1970 and
 James P. Anderson 1955
 Regina Hutto Anderson 1989 and
 Joseph B. Anderson 1986
 Renee D. Anderson and Ivan V. Anderson, Jr.
 Anonymous (2)
 Sharon Asbill and William S. Asbill
 Elizabeth Bramlett Baker 1981 and
 Charles J. Baker III 1980
 Susan L. Beatty 1986
 Anke Berlin and Andrew Mark Berlin
 Jaclyn Krawcheck Berlinsky 1960
 R. Michael Bryant 1985
 Sharon Buehler and William F. Buehler
 Beth Buford and R.C. Buford
 Billings Cay and John E. Cay III
 Marnie Chardon and Marc Chardon
 Janice Clark and Malcolm C. Clark
 Patricia Copeland and Earle V. Copeland 1993
 Tammy Darby and Charles P. Darby III
 Caroline de Chazal and Guy L. de Chazal
 Gail Delvecchio and David Delvecchio
 Leilani DeMuth
 Carolyn Draisin and Neil W. Draisin 1965
 Calvine Dunnan and Douglas M. Dunnan
 Meb Eady and John L. Eady 1963
 Ryan Jacob Eleuteri 2002
 Michael Elliott
 Candace Emsiek and Richard Emsiek
 Alice W. Farmer and Curtis C. Farmer
 Olivia Farr and John Farr
 Laurie Farr and Michael K. Farr
 Richard E. Fields
 Prudence Finn and William A. Finn
 Caroline Simons Finnerty and
 Peter F. Finnerty, Jr.

Jessica Eckle Fisher 1996 and Winston C. Fisher
 Amy Foxhall and Joey H. Foxhall 1999
 Elizabeth Furey and Timothy Furey
 Lynn Gagliardi and Michael E. Gagliardi
 Leslie Gambee and Peter C. Gambee
 Jennifer Gianoukos and Andrew
 A. Gianoukos 1994
 Anthony James Gianoukos 1981
 Laura Gianoukos and James A. Gianoukos
 Julia Janes and Andrew Gordon
 Bill Green
 Samuel Greene*
 Charlene McCutchen Grice 1982
 and George D. Grice III
 Michael W. Grueneberger 2003
 Deborah Wise Guerry 1980 and
 John Everett Guerry III 1977
 Patricia Sullivan Gustafson 1972 and
 Kenneth S. Gustafson, Sr. 1975
 Joan Hackenberg and John F. Hackenberg
 Barbara Hallberg and Harold Thomas Hallberg
 Mariana Ramsay Hay 1982 and
 David M. Hay 1981
 Marilynn W. Hill and John A. Hill
 Farrah Brandi Hoffmire 2001 and
 Mitchell Scott Davis 1993
 Rita Liddy Hollings* 1957 and Ernest F. Hollings
 Valerie Baker Howell 2002 and
 Scott S. Howell 2002
 Nancy H. Ireland
 Daniel A. Kendall 1998
 Sheryl Kimerling and Jonathan Kimerling
 Amy McDonald Kinard 1977 and
 Jeffery E. Kinard 1977
 Mary Eileen Leonard 1945
 Elizabeth R. Lewine
 Josephine M. Lewis and Andrew H. Lewis, Sr.
 Rachel Lorentzen and Per Lorentzen
 Richard T. Maclean 1988
 Lisa D. Main and Emory S. Main
 Bradford Marshall and Charles K. Marshall 1976
 Joseph L. Mathias IV
 Jessica Maxwell and Grover C. Maxwell III
 Sharon Meadows and Randall S. Meadows
 Jennifer Mendelsohn and David
 B. Mendelsohn 1994
 Tony Meyer 1949
 Risa Milbauer and David Milbauer
 Juliet S. Milligan and George H. Milligan
 Judy W. Olitsky and Harvey J. Olitsky
 Tina Pissilos Padgett 1978 and
 Gregory D. Padgett 1979

Brooke Falk Permenter 2006 and
 Christopher B. Permenter 2005
 Patricia Phelan
 Stephanie Smith-Phillips and
 James H. Phillips 1973
 Linda Compton Ravenel and
 Daniel Ravenel 1972
 Susanne Stevens Richards 1993
 and Mark W. Richards 1988
 Kathleen H. Rivers
 Dan Robinson, Jr.
 Jeanette Rockefeller and Parker B. Rockefeller
 Nadia P. Blanchat and Kent L. Rollins 1976
 Betty Watkins Sandifer 1984 and
 Paul A. Sandifer 1968
 Cathy Hawkins Seymore 1978 and
 Russell Jeffrey Seymore
 Katrina Sherrerd and David Smith
 Vita V. Shoemaker and Dan Shoemaker
 Lisa Simons and Dolph Simons III
 Kelly Skelly and Martin Skelly
 Cherie Westendorff Smith 2003
 and C. Ryan Smith 2002
 Sandra Smith and Shawn R. Smith 1996
 Carleen L. Smith and Woodie R. Smith
 Nancy Webb Stafford 1970 and
 Sam Stafford III 1968
 Cheryl Steadman and Paul W. Steadman 1983
 Janan C. Stone and William T. Stone 1975
 Yvonne M. Stoneburner and
 Frank D. Stoneburner
 Edith Howle and Rick Throckmorton
 Dana Robinson Tiller 1984 and
 John H. Tiller 1984
 H. Peter Van Ingen, Jr.
 Sandra Vineyard and Philip P. Vineyard, Jr.
 Peggy Watt and George P. Watt, Jr.
 Julia Sadler Webb 1962 and Richard O. Webb
 Drew W. Weeks and Thomas W. Weeks
 Edward I. Weisiger, Jr.
 Lois F. Wolpert and Raphael Wolpert

**Corporate and
Foundation Partners**

4S Builders, Inc.
 Nathan and Marlene Addlestone Foundation
 The Agricultural Society of South Carolina
 Anonymous
 Saul Alexander Foundation
 Association for Jewish Studies, Inc.
 ATD
 Bank of America Charitable Gift Fund

THE DEAN'S EXCELLENCE FUND FOR THE SCHOOL OF SCIENCES AND MATHEMATICS SUPPORTED SEVERAL UNDERGRADUATE RESEARCH STIPENDS FOR STUDENTS TO GET HANDS-ON LAB EXPERIENCE IN 2012.



The Beach Company
 Blackbaud
 Charleston Defense Contractors Association
 Charleston Running Club, Inc.
 City of Charleston
 Coca-Cola Bottling Company Consolidated
 Colonial Construction Materials Inc.
 Columbus Hope Foundation Inc.
 The Community Foundation of Greater Birmingham
 The Charles Delmar Foundation
 Richard F. Emsiek Architect, Inc.
 Fidelity Charitable Gift Fund
 Gianoukos Brothers, LLC
 Mary and Kathleen Harriman Foundation
 Mary W. Harriman Foundation

Hay Tire Company, Inc.
 Hebrew Orphan Society
 The Estate of Rita Liddy Hollings
 The Humanities Council
 The InterTech Group, Inc.
 The Links at Stono Ferry
 William H. and Nancy S. Longfield Living Trust
 Midnight Run, LLC
 MI-TECH, Inc.
 The National Christian Foundation
 National Philanthropic Trust
 Pain Specialists of Charleston
 PolyClean USA
 Santee Cooper
 Science Applications International Corporation
 Select Health of SC

SMG
 Uricchio, Howe, Krell, Jacobson,
 Toporek, Theo and Keith, PA
 Wild Dunes Resort

\$1,000 - \$4,999

Individual Donors

Maureen Ackerman and Roger G. Ackerman
 Jeffrey Akhtar
 Richard J. Albenesius
 Robin M. Alexander and Brian E. Alexander 1990
 Maria Corontzes Alfieris 1976
 and Cyrus P. Alfieris
 Judith Virginia Allen
 Jill Almeida and Richard Almeida

Marsha M. Alterman and Douglas J. Alterman
 Susan D. Altman and Charles S. Altman
 Susan Altman and Samuel H. Altman
 Lucy Anda
 Jane Anderson and Allan J. Anderson
 Emmy Lou Anderson
 Charlie Segars and Mark O. Andrews 1976
 Anonymous (3)
 Nancy Apatov and Alan Beychok
 Ellen F. Arnovitz
 Douglas D. Ashley
 Mickie Asleson and Gary L. Asleson
 Christine Atkinson and Robert H. Atkinson, Jr.
 Nitsa Auerbach and Michael J. Auerbach
 Dianne P. Avlon and John Avlon
 David T. Bailey
 Betsy R. Bailey and James T. Bailey
 Brett M. Baker
 Bet Baker and Mark Baker
 Linda E. Bakker and Anthony E. Bakker
 Martha D. Baldwin and Gerard E. Baldwin, Sr. 1967
 Christa K. Banholzer and Scot D. Banholzer
 Anne F. Barnes and William Barnes IV
 Valerie Manatis Barnett 1984
 and William Barnett III
 Sharon Barnett and Charles J. Barnett
 Timothy G. Barrett
 Patricia Baxter Barrett 1992 and
 William M. Barrett 1991
 William R. Barrett, Jr.
 JoEllen Basile and Jan Basile
 Doris Faye Baumgarten
 Stephen J. Baumrind
 Charlotte Small Bavier 1943
 Susie Beatty and John M. Beatty, Sr.
 Joseph Beck
 R. Philip Bees
 Ed Behrens
 Ashley Hammond Belcher 1993
 and Ladson F. Belcher 1991
 Ellen D. Benke and R. Andrew Benke 1977
 Jane Benson and George Benson
 Janet Bent and John Bent, Jr.
 Eve Berlinsky and Norman Berlinsky
 Barbara K. Bernstein and Donald H. Bernstein
 K. Tracey Bible 1994 and Kenneth W. Bible
 Marianne C. Bladek and Thomas R. Bladek
 Robert P. Bland, Jr.
 Blanche Blankenship and Tereance L. Blankenship 1982

Bess Brockington Bluestein 2002
 and Brett A. Bluestein 1997
 EttaLeah Bluestein and Nathan J. Bluestein
 Sylvia M. Boineau and Maxcy C. Boineau 1958
 Leslie Bolick Bolden 1989 and Dana Bolden
 Honor Sawyer Bonds 1991 and Philip W. Bonds
 Edna Boone and William Boone
 Tina A. Bostic and Robert S. Bostic
 Marjorie E. Bottcher and Steven P. Bottcher
 Michelle Bouvette and Pierre E. Bouvette 1981
 Jane C. Bowen
 Jeannette Moore Bowers
 Peggy Gunter Boykin 1981 and Darrell J. Boykin
 Sondra H. Branch and Lenord M. Branch 1968
 Lee Breeden and James O. Breeden
 Alice H. Brewer
 Susan A. Bridges 1979 and Kenneth Moore
 Nancy C. Bristol and Ronald H. Bristol
 Betty S. Brody
 Lynn B. Brooke and Robert L. Brooke
 Jane Brooks and John J. Brooks
 Janice L. Brooks and Leonard Brooks III
 Diana Browder and Richard W. Browder
 Elizabeth Seabrook Brown and
 Charles Lee Brown
 Grier Gadsden Brown 1976 and
 William Glen Brown, Jr. 1976
 Mark William Bryan
 Lisa Bollinger Burbage 1981
 and John M. Burbage
 Priscilla D. Burbage and Walker Burbage
 Elizabeth Middleton Burke 1994
 and Richard Burke
 Jennifer S. Burnett
 John Hartnett Busch 1985
 Eda H. Cabaniss and Robert W. Cabaniss, Jr.
 Peter S. Cahall
 Tania Cahill and Michael E. Cahill
 Vicki Campbell and Paul G. Campbell, Jr.
 Christel R. Carpenter and Rick L. Carpenter 1971
 Diane B. Carr and Robert S. Carr
 Anne R. Cason 2000 and Gregory S. Cason 2002
 Diane Cavazzoni and Marco Cavazzoni
 Drew Cawood
 Scott Cayouette
 Jennifer Cersuolo and John Cerasuolo
 Jill Chalsty and John S. Chalsty
 Ana M. Candela 1996 and Jason B. Chan 1997
 Cary Chastain
 Heather J. Chipley and Robert T. Chipley
 Judy E. Chitwood and James L. Chitwood
 Denise Ciccarelli and John L. Ciccarelli, Jr.

Katharine Wilkerson Claussen 1979 and Arthur Chris Claussen III 1978
 Robert G. Clawson III
 Helen E. Clawson and Robert G. Clawson, Jr.
 Claudia Cohen and David J. Cohen
 Linda Cohen and David L. Cohen
 Mary Ann K. Colbert and Timothy J. Colbert
 Mary C. Collis and James J. Collis
 Amy K. Comer and Paul N. Comer 1997
 Owen Compher
 Elizabeth Ann Compnen 1995
 Edward I. Condon, Jr.
 Thomas C. Condon
 Todd Aaron Confarotta 2000
 Virginia C. Conlon and Kevin J. Conlon 1991
 Ann B. Connellee and William L. Connellee
 Brian E. Connolly 2001
 Garth Otto Cook
 Katherine Coffey Cooney 2004 and Kellen Cooney 2005
 Barbara M. Cooper
 Randee Cooper and Douglas L. Cooper
 Gale H. Cooper and Elliott T. Cooper, Jr.
 William Joshua Cooper 2010
 Christopher Lee Cordes 1994
 Elizabeth Leigh Counts 2000
 Charlotte Lee McConnell Cox 1996 and Eric S. Cox 1993
 Linda Swain Crabbe 1978 and Mark Crabbe
 Janet Heath Cracraft 1985 and Scott A. Cracraft 1983
 Mary Beardall Creech 1984 and Bobby R. Creech, Jr. 1986
 Mildred M. Crispyn and G. Joseph Crispyn
 David W. Crowley 2002
 Noula Cumins and Mark Cumins
 Joan Severance Cunningham 1960 and Robert C. Cunningham
 Nancy Currie
 Eileen Dagostino and Nicholas Dagostino, Jr.
 Lisa Dale and Clarence T. Dale, Jr.
 L. Cherry Daniel 1975
 Robert G. Daniel
 Vicky Shields Daniel 1984 and Dan Daniel
 Colleen G. Dargan and Perrin Q. Dargan III 1984
 John Belk Daughtridge, Jr.
 J. Belk Daughtridge
 Hart Deal and Jeff Deal
 Janet Deavor and James P. Deavor
 Justa B. Debnam and George F. Debnam, Jr. 1994
 Jean M. DeCollibus and Mark A. DeCollibus

John Dewberry
 Marie Allain 1999 and Daniel R. Dickerson 1999
 Timothy J. Doke
 Mary F. Dolliver and Joseph F. Dolliver
 John Dolven
 Wendy M. Dopp and P. Steven Dopp
 Karen Lundy Douglas 1970 and Walter Douglas
 Kelly Douglass and John D. Douglass 1999
 Ellen C. Draisen and Barry H. Draisen
 Larry Driggers
 Whitney O. Duffy and Edward W. Duffy, Jr. 1983
 Vicky M. Dukes and Daniel S. Dukes IV 1981
 Yvette Dunn and Donald G. Dunn, Jr.
 George Durney
 Sheila Maher Dworkin and Paul H. Dworkin
 Nancy Dwyer and James W. Dwyer
 Lynn F. Eads and Albert E. Eads III 1982
 Liz Edwards and Paul Edwards
 Dayna Elliott and Richard D. Elliott
 Donna Looms Emerson 1977 and Barry A. Emerson
 Kathryn Graven and Dennis J. Encarnation 1974
 Katie Eney and Craig Eney
 Julie Evans and Cameron Evans
 Yvonne duFort Evans 1958 and L. Wilbur Evans 1951
 Susan Everts and Erich Everts
 Lisa Harrell Farmer 1986 and Sean Farmer
 Howell M. Feig
 Sharon L. Feinberg and Dennis A. Feinberg
 Judith G. Fellers and Henry Fellers
 Sandra Fennell and George W. Fennell
 Andrea Ferguson and Darrell C. Ferguson
 Carol L. Blessing-Feussner and John R. Feussner
 Patricia Fisher and David Fisher
 Terry Becker Fisher 1984 and Dennis J. Fisher
 Julie Maria Fitzharris 1996
 Charlotte Flint and Michael J. Flint 1977
 Eric Lee Floyd 2010
 George Flynn
 Lesesne Bell Forchheimer 1951 and Otto L. Forchheimer
 Cheryl Forrest and Sam Forrest
 Jeffrey A. Foster
 Harold I. Fox 1947
 Karen Fraser and Christopher B. Fraser
 Alberta Way Freeman and Robert L. Freeman 1978
 Tracy Friedmann and Steve Friedmann
 M. Janine Quinn and David G. Frolio
 Helen Bradham Furnans 1963



MORE THAN 500 GUESTS WELCOMED AUTHOR AND POLITICAL COMMENTATOR JON MEACHAM AT THE FALL FRIENDS OF THE LIBRARY EVENT ON RIVERS GREEN.

Lisa Alexander Gadsden 1978 and Frank M. Gadsden 1980
 Neva Anderson Gadsden 1986 and Richard H. Gadsden, Jr. 1981
 Justin P. Gaeta 2009
 Jane Gardner and Tommy Gardner
 Laura Daignault Gates and Stephen F. Gates
 William Chad George
 Melissa Gernert and William Gernert
 Joseph Elgin Gettys
 Brian Vincent Giarrocco 2010
 Alan Gillespie
 Robin Ginsberg and Samuel Ginsberg

Barkley Glendenning and Jeremy Scott Glendenning 1996
 Andrea Hilsman Glenn and E. Vernon Glenn
 Robert Lee Going 2003
 Harriet Lauper Goldberg 1985 and Charles S. Goldberg
 Henrietta U. Golding 1974
 Elizabeth Tiller Gourdin 1980 and Theodore G. Gourdin 1981
 Sherri Grace and John Grace
 Enrique G. Graf
 J. Michael Grant
 Anna Tsalapatias and George Gratzick

Pat Gray and Timothy Gray
 Judith L. Green and Mark R. Green
 Barbara L. Green and William D. Green
 Roslyn G. Greenspon
 Matthew Barrett Griesemer 2002
 Wendi Griffith and Jack W. Griffith, Jr. 1975
 Nancy Sharkey and Keith Grybowski
 Carol P. Hacker and Ronald F. Hacker
 Shannon Withrock Haddad 1978 and Richard A. Haddad 1975
 Elizabeth Stevens Ham 1980 and Forrest Cleave Ham
 Lizanne Hanckel and John Hanckel

Sandra Hannegan and Chris Hannegan
 Dorothy Harrison and Jerry Harrison
 Cynthia A. Harton 1975
 Sylvia Craver Harvey 1958 and
 Charles Edward Harvey
 Elizabeth Haskin and William B. Haskin, Jr. 1986
 Kendra Haskins and Michael Haskins
 Henry J. Hahn III
 Anne Hawkes and James S. Hawkes
 Cheryl Hay and Henry M. Hay III 1985
 Sabine Haythe and Thomas Haythe
 Joni Hazelton and J. Douglas Hazelton
 Susan Renfrew and C. Stephen Heard, Jr.
 Carla Heard and Charles F. Heard, Jr.
 Susan B. Heath and Arthur J. Heath
 Bert Hefke
 Cynthia M. Heldrich and Frederick J. Heldrich III
 Amy L. Heyel 1992 and William Fernandez
 Pamela Hightower and James F. Hightower 1982
 Gretchen L. Hilton and Andrew H. Hilton
 Mary B. Hines* and James T. Hines, Jr.
 Michelle Hinson and Howard Douglas Hinson
 Shirley Rogers Hinson 1994
 Kelly Kaiser Hiott 1986 and
 Stephen B. Hiott 1986
 Evelyn Holbert and Conrad A. Holbert, Sr.
 Gerry W. Holforty 1977
 Ellen Hamrick Hollingsworth and
 John Hollingsworth
 Ed Holt
 Boone Knox Hopkins 2008
 Patricia Horton and Richard Horton
 Kathy Horvath and Steve Horvath
 Betty Faris Howell and Roy A. Howell, Jr.* 1946
 Virginia Taylor Howell 1989 and
 Roy A. Howell III 1984
 Sherri Montgomery Howie 1987 and
 Theodore V. Howie, Jr. 1983
 John H. Huey, Jr.
 Katy Hufnagle and Jon Hufnagle
 Susan Stansell Huggins 1989 and
 Tracy S. Huggins 1991
 Constance L. Hughes and Lowry D. Hughes
 Vivian Viles Huguley 1974 and
 John E. Huguley, Jr. 1972
 Carol Joy Mackey Hume 1975 and
 Corey D. Hume 1977
 Carolyn D. Hunter
 Ann Hurt and C. Clayton Hurt, Jr.
 Elizabeth Brooke Hurt 2008
 Hillary Hutchinson
 Joanne Hutzler and Alvin Hutzler

Alison Hynd and George Hynd
 Jeffrey L. Irvin
 Brenda Isaac and Bob Isaac 1958
 Eileen Jackson and Jay Jackson
 Murray Jaffe
 Deborah R. Lee James
 Carole Lane Jaques 1963 and
 Charles A. Jaques 1963
 Holly M. Jenkins
 Terry L. Johnson and Carl R. Johnson 1971
 Cynthia Hay Johnson
 Wilbur E. Johnson
 Helen Johnson and William Dwight Johnson
 Margaret Johnson and Bradley L. Johnson
 Whitney Jones and Charles Anthony Jones 1989
 Sandra Harley Jones 1963 and
 Kenneth L. Jones 1963
 Mary J. Jordan and John M. Jordan, Jr. 1962
 Carin Jorgensen and Patrick M. Woster
 Judith Kaiser and Charles F. Kaiser
 Elizabeth W. Kassebaum
 Donald Katz
 Susan B. Kaufman and Louis J. Kaufman
 Rebecca P. Kay and Ansel C. Kay IV 1985
 Ann Keane and Raymond C. Keane
 Brandy Keener and John Keener
 Etta Kelly and Christopher G. Kelly, Jr.
 Frances Kenworthy and Stuart A. Kenworthy
 Lenora Kessler and Raymond A. Kessler, Jr.
 Michaela Keszler and Stephan Keszler
 Linda G. Ketner
 Paul Keyserling
 William Keyserling
 David Kilborn
 Mary Kilbride and William B. Kilbride
 Anne Atwater King 1978 and
 Kenneth T. King 1979
 Patricia King and William B. King 1978
 Mitzi Kirshtein and Sam Kirshtein 1945
 Gary C. Klein
 Linette Klevan and Thomas Klevan
 Karen Klopp
 Gladys H. Knight
 Catherine A. Kocher and Mark J. Kocher
 Julie A. Kornahrens 1984
 Constance Calomiris-Korobkin and Alan Korobkin
 Callie P. Kouten and Peter A. Kouten, Sr. 1988
 Amy Mendelson Krell and Edward Krell
 Amy N. Kronsberg and Edward Kronsberg
 Paula Kutcher and Leslie Kutcher
 Nancy Kutler and Edward Kutler
 Tina Lacey

Anne Burges Lake 1964 and Joel J. Lake
 Jeffrey John Lamberson 1993
 Marie M. Land and John C. Land III
 Susan K. Lander and Larry D. Lander
 Mary Wilson LaRoche 1979 and Stan LaRoche, Jr.
 Stephanie Latham and Zane Paul Latham 2004
 Sigrid G. Laughlin and Michael J. Laughlin
 Marguerite Lawson
 Maria Lechado
 Richard H. Lee
 Nancy Leet and George Leet
 Laurie Miller Lempeis 1988 and
 Basil L. Lempeis 1979
 Dianne Lever and Benjamin R. Lever III
 Rose Levin and Theodore Levin
 Howard Levine
 Janet P. Lipov and Larry A. Lipov
 Nina P. Liu
 Arlinda Faye Locklear 1973
 Frances Cain Lofton 1979 and Lionel Lofton
 Susan R. Lourie
 Kathleen Holtz Low 2000 and
 David M. Low 1998
 Lisa Rinzler-Lubel and Alan E. Lubel
 Teresa Major Luhrs 1983 and William J. Camp
 Jane E. Lurie and Robert D. Lurie
 Elisabeth S. Lynch and Spencer J. Lynch
 Anne Lyndrup and Allen W. Lyndrup
 Lynn Jaynes Macaluso and Charles Macaluso
 Ashley MaGee and Brendan MaGee
 Cathryn Hill Mahon 1980 and
 Thomas Mahon II 1974
 John Mahoney
 Cynthia Harwood Malanos 1970 and
 George E. Malanos 1968
 Michelle Y. Mangum 1986
 Brooke Manheimer and Jeffrey
 P. Manheimer 2001
 Kris Manigault and Pierre B. Manigault
 Laura L. Marchant and William
 Wood Marchant III 1989
 Susan Clark Marlowe 1976 and Robert
 William Marlowe 1971
 Mark J. Marra
 Katherine Brockington Marshall 2003
 and James M. Marshall 2002
 Sharon Martin and Jerold Martin
 Michael S. Martin
 Marianne L. Martino and Ralph Martino
 David P. Masich
 Susan Massamillo and Eugene Massamillo
 Michael W. Massey, Jr. 1987

Susan D. Master and Michael Master
 Laura Mateo
 Stephen Matola
 Jack F. Maybank, Jr. 2002
 Amy Thompson McCandless
 Georgia McCravey and John McCravey
 Katherine Moorer McDermott 1979 and
 James Patrick McDermott 1978
 Deborah McGee and Brian McGee
 Patrick McGovern
 Dallas McGuire
 Chris Mattsson and John McHale
 Pamela G. McIlhenny and
 Edmund McIlhenny, Jr.
 Susan McKenna and James McKenna
 W. Andrew McKenna
 Charles McLenoon
 John E. McMullan
 Nancy C. McWilliams and John McWilliams IV
 Doris L. Meddin
 Irving Meisler
 Vickie Menard and Michael L. Menard 1980
 Jane Mendelsohn and Burnet Mendelsohn
 Beth Pierce Meredith 1997 and
 Robert R. Meredith, Jr.
 Shana L. Meyer and Michael G. Meyer
 Carolyn Mikell and Chip Mikell
 Emily F. Mikell and G. Lee Mikell 1984
 Julie Sizemore Miler and D.
 Sherwood Miler III 1974
 Britt Miller 1989
 James B. Miller
 Patricia M. Miller and Marshall V. Miller
 Dolores Floyd Millings 1993 and
 Ronald A. Millings 1994
 Kerry Mobley Missel 1976 and
 Frederick G. Missel, Jr. 1976
 Joseph David Mitchell 1980
 Cynthia Mixson Mixson 1981 and Ann Mixson
 Pamela Moise and Robert M. Moise
 Patricia Fralinger Moore 1984
 and Kirk E. Moore 1984
 Mark S. Moore
 Sean Moore
 Annaliza Oehmig Moorhead 1992
 and John Kirkman Moorhead
 Carol Morgan
 Valerie B. Morris and Boris Bohun-Chudyniv
 Susan J. Morrison
 Cathy Morse and John Tucker Morse
 Howard Mosbacher
 Alexa S. Mosteller and Charles S. Mosteller 1981

Catherine Mott and William Mott
 Penelope A. Munson
 La Guardia Smith Myers 1993
 and Anthony T. Myers
 Carol A. Mysel and Allan L. Mysel
 Tiffany L. Howard 1991 and
 Andrew J. Naricisso 1996
 Ben Navarro
 Susan Neligan and James B. Neligan
 Marlijo Nelson and Rhame Nelson 1988
 Linda Nevin and Bob Nevin
 Katharine Calwell Nevin
 Diane S. Newsome and Roger Newman
 Kathy Newsome and James Newsome III
 Kate Elizabeth Newsome 2013
 Mark Newton
 Christopher J. Niceley
 Mary Norton and Joe Norton
 Melody Nuss* and Jerry J. Nuss 1990
 Lynn M. Nycum and Lawrence R. Nycum
 Megan Emily O'Brien 2010
 Dianne C. O'Brien and Michael R. O'Brien
 Mindy Odle and David Odle
 Thomas E. O'Donnell
 Carmela Ofer and Samuel Ofer
 Lisa C. O'Hara and Patrick T. O'Hara
 Connie Olivetti and Alfred C. Olivetti
 Anne P. Olsen
 Christine Stiepel Osborne 1978 and
 C. Wayne Osborne, Jr. 1978
 Mary Osborne and Stephen C. Osborne 1973
 Carolyn P. Osolinik
 Janelle Othersen and H. Biemann
 Othersen, Jr. 1950
 Bobby F. Ott
 Elizabeth Rasor Page 1984
 Lauri Newkirk-Paggi and William
 Mario Paggi 1977
 Marguerite B. Palmer
 Norma C. Palms and John M. Palms
 Dendy L. Pappas and Rallis L. Pappas 1978
 Kimberly Parent and Peter A. Parent
 Sarah C. Parker 1987
 Richard C. Parks 2010
 Kelli Parsons
 Blake Newitt Newitt Partridge 1990
 John L. Paul
 Jean Ellen Paulson and L. Edwin Paulson, Jr.
 Edward Malcolm Payne III
 Allison Payne and John T. Payne 1993
 Patricia Pearson and Wayne Pearson
 Catherine Marshall and Michael Pedrick

Jeryll H. Perlmutter 1983 and Martin Perlmutter
 Diana Permar and Mark Permar
 Scott S. Shanklin-Peterson and Terry K. Peterson
 Michael T. Peyton
 Eileen Pflum and Ted Pflum
 Elizabeth S. Phillips
 LaVonne Phillips
 Diana Pickering
 Katherine J. Plair and James B. Plair, Jr.
 Will Player
 Sandra A. Poliakoff and Edward E. Poliakoff
 Christine Popovich and Mark Popovich
 Mary Jo Potter and William Z. Potter
 Ann Looper Pryor 1983 and Gregory Pryor
 Anne Stender Puckhaber 1947 and
 Bernard F. Puckhaber 1950
 Robin H. Query and Erwin L. Query, Jr. 1977
 George Bernard Rabb 1951
 Betsy Rackoff
 Kathy Ramich and James M. Ramich
 Alexander W. Ramsay
 Charles Andrew Rankin 1993
 Ric R. Ravenel and Arthur Ravenel, Jr. 1950
 Jeanne G. Reagin and K. Britt Reagin 1998
 Ronald Lee Reese
 Dorothy C. Rhett and William P. Rhett, Jr.
 Doris S. Rhodes and William M. Rhodes
 William Rice
 Robben Richards
 Betty B. Riggs
 Manda Riggs and J. West Riggs 1993
 Lawrason Riggs, Jr.
 Kevin Riker
 Charles Rittenberg 1995
 David E. Rivers
 Julie Spell Roberts 1984 and
 Tobin J. Roberts 1982
 Claire Z. Robinson and Klyde Robinson
 Susan D. Romaine and Henry S. Romaine
 Renee Buyck Romberger 1981
 and Randy Romberger
 Bernice W. Rosen and Benedict P. Rosen
 Susan Rosen and Robert N. Rosen
 Wendy Rosenthal and Thomas G. Rosenthal
 Leila Davenport Ross 2000 and William Ross
 Tricia Roth and Benjamin Roth
 Rudy T. Rothseiden 2003
 Rose Condon Hamm Rowland 1972
 and John Rowland
 Robert B. Rummerfield
 Brenda C. Rush and Robert M. Rush
 Roger Ryan

Patti S. Salisbury and Howard G. Salisbury, Jr.
 Zoe D. Sanders and Alexander M. Sanders, Jr.
 Robert John Sauers 1977 and D. Oliver Bowman
 Diane Savoie and Daniel Savoie
 Angela Sawyer
 Janet Wells Scarborough 1998 and
 George C. Scarborough 1975
 Jordy Christian Schaffner 2002
 Lori Schimpf and Dennis K. Schimpf
 Betty Jo Schleier and Dudley Schleier
 Marion Schools and Burton R. Schools
 Jerrye Scofield and Timothy Scofield
 Marianne Seabrook and Luther Seabrook
 Mary Jane Sedorowitz
 Monica Seeger and Kenneth T. Seeger
 Michele Hendren Seekings and
 Michael S. Seekings
 Beverly D. Seinsheimer and Walter
 G. Seinsheimer, Jr.
 Emily Sekula-Wood 2005
 Jeff H. Selig
 Anne W. Semmes and William A. Semmes
 Gary E. Shealy 1982
 Kathleen Sheftall and Benjamin F. Sheftall
 Susan J. Sheftel
 Amy M. Gordon 2002 and Joseph
 A. Shepanek 2007
 Howard B. Sherman
 Ivan Morton Sherman 1974 and Mark Ledet
 Kathleen G. Shevitz and Mark Shevitz
 Dana L. Shillington and David
 G. Shillington 1983
 Linda Shortridge and Kenneth Shortridge, Jr.
 M. Faisal Siddiqi 2005
 Rebecca Shackelford Sigmon 1970
 and Lee M. Sigmon 1968
 Evy Dickson Silcox 1991 and
 Christopher G. Silcox 1992
 Elizabeth L. Silcox and Willard A. Silcox III 1989
 Gloria Seithel Silcox 1966 and
 Willard A. Silcox, Jr. 1965
 Lawrence J. Simon 1976
 Anthony Skatell III
 Lynn Ray Smalley 1973 and Earl Smalley, Jr.
 Catherine P. Smith and Hilton C. Smith, Jr.
 Amy C. Smith and James D. Smith, Jr. 1993
 Kevin Michel Smith 1992
 Gloria Smith and Norman J. Smith
 Susan M. Smythe and Henry B. Smythe, Jr.
 Laurie Soenen and Scott Soenen
 Daniel B. Solomon
 Cynthia Solomon and Kerry Solomon

Josh Sorkin
 Margaret Olivia Sowell 1980 and R. Paul Aftning
 Norma J. Sox 1975
 Marcia Spar and Harvey M. Spar
 Doris A. Spaulding and George G. Spaulding
 Jean Rouse Spell 1958 and Pete Spell
 Susan Steinberg and Bernard Steinberg
 Ellen S. Steinberg and Robert M. Steinberg
 Patricia H. Steiner and Maurice L. Steiner
 Susan Groves Stevens
 Lynda M. Stiles and Robert L. Stiles
 Robert J. Stine
 Laura Stone and David E. Stone
 Tommy Stone
 Katina P. Strauch and Bruce Strauch
 Deb Strickler and Paul Strickler
 Katherine Watkins Strubeck 1980 and
 Louis R. Strubeck, Jr. 1980
 Frederick E. Swanson 1994
 Dottie Tanenbaum
 Mark C. Tanenbaum
 Judith Tarleton and Larry Tarleton
 Karen Tarpey and John David Tarpey 2000
 Robert Tarr, Jr.
 Susan Taylor and Alec Taylor
 Caroline W. Thibault and Albert A. Thibault
 Aimee Rogers Thomas 1993 and
 Jay A. Thomas 1993
 Samuel Duane Thomas
 Stephen Langton Thomas 1962
 Jonathan Mark Thompson
 Diana Thornley and George C. Thornley
 Kelly Workman Tick 2001 and Louis C. Tick 1998
 Pamela Hill Tiencken 1975 and
 John H. Tiencken, Jr. 1975
 B. Kelly Titus and Jeffrey R. Titus
 Caitlin T. Tobin and Christopher R. Tobin
 Sharon Toporek and Edwin Toporek
 Nancy Guy Union 1981 and
 Christopher N. Union 1980
 Anita Condon Van de Erve 1970
 Lucienne Van Schaack and J.
 Gregory Van Schaack
 Ellen C. Vaughan, 1981 and David J. Vaughan
 Stewart Croswell Vernon 2002 and
 Shannon Michele Vernon 2002
 Rich Villacres
 Gloria Vinson and Jack Vinson
 Karen A. Vournakis and John N. Vournakis
 Annick Wadsworth and Eliot Wadsworth II
 Patience D. Walker
 Michael B. Walsh 1981

Amos K. Wamweya
 Anthony Scott Ward 1985
 Elizabeth B. Warren
 Mary Ellen L. Way and Charles S. Way, Jr.
 Lisa B. Weil and Adolph Weil III 1979
 Darrell M. Wells 1996
 Melanie Wessinger and Philip Wessinger
 Caroline Welch West 1993 and William West
 Jacqueline M. Whelan and Stephen
 W. Whelan, Jr. 1975
 Thomas R. Wieters
 Harriet P. Williams and George W. Williams
 James A. Williams
 Alfred Edgar Wilson III 1996
 Victor K. Wilson
 Veronica Winks
 Libby Winthrop and John Winthrop
 Carl A. Wise
 Teresa Brown Withrow 1989 and
 Randall P. Withrow 1990
 John Beale Wood Jr. 1983
 Cheryl Novak Woods-Flowers 1981
 and Harold C. Flowers
 Linda Woodside and B. Perry Woodside III
 Linda Woodwell
 Elizabeth M. Guerard Wright
 and Richard T. Wright
 Marty Young and Gregory Young
 Radomir Zaric 1998
 Susan Kroll Zeff 1972 and Robert Zeff
 Mindelle R. Ziff and Loren R. Ziff
 Julie Ziff and Stephen Ziff
 Elizabeth Zollinger and Edward Zollinger

**Corporate and
 Foundation Partners**

Academy of Economics and Finance
 The Bill, Jeannie and Harry
 Ackerman Foundation
 Air-X-Limited
 Alphagraphics of Charleston
 Ameriprise Financial, Inc.
 Anonymous
 ARAMARK Services
 Associated Container Sales
 Associated Jewish Charities of Baltimore
 Atlantic Coast Life Insurance
 Atlantic Trucking Company, Inc.
 ATS Intermodal
 Avery Institute for Afro-American
 History and Culture
 Bank of America Public Finance Division

Banks Construction Company
 The Barnet Foundation Trust
 Belle Hall Elementary PTA
 Benefit Concepts
 Berle Manufacturing Company
 Berlin's Restaurant Supply, Inc.
 Donald H. & Barbara K. Bernstein
 Family Foundation
 Bishop Gadsden Retirement Community
 Blockhead Builders, LLC
 The Bluming Family Trust
 Boone's Bar & Grille
 C & A Unlimited, Inc.
 C. T. Lowndes and Company
 The Cassina Group LLC
 Wayland H. Cato, Jr. Foundation Inc
 Center for Creative Retirement
 Ceres Terminals Inc.
 Charleston Area Convention & Visitors Bureau
 Charleston Bed and Breakfast Association
 Charleston Beer Works
 Charleston Branch Harbor Pilots
 The Charleston Club
 Charleston Crab House Corporate Office
 Charleston Fine Art Dealers Association
 The Charleston Information Group LLC
 Charleston Place
 Charleston Restoration & Cosmetic Dentistry LLC
 Charleston Symphony Orchestra League
 Charleston Veterinary Referral Center
 Chucktown Music Group, LLC
 The City Marina Company
 Clarion Inn by Choice Hotels
 Coles Family Foundation
 College of Charleston Alumni Association
 James J. Collis Revocable Trust
 Condon Food Company
 Cougars LLC
 CresCom Bank
 Croghan's Jewel Box
 Del Frisco's Grille of Atlanta #8706
 Deutscher Bruderliche Bund
 Dewberry Foundation
 Charles H. Dishman III Family Foundation Inc.
 Dixie Furniture Company
 Don P. Quint & Associates
 E and L Management Services, LLC
 East Bay Deli
 East Cooper Outboard Beneficent Group, Inc.
 Elliott Davis, LLC
 eThORITY, Inc.
 EXAMKRACKERS



CRONIN CULLEN IS A MEMBER OF THE 2012-2013 SCHOTTLAND SCHOLARS PROGRAM IN THE SCHOOL OF BUSINESS IS FUNDED BY SUSAN AND PETER SCHOTTLAND TO FACILITATE EXPERIENTIAL LEARNING OPPORTUNITIES IN BUSINESS FOR STUDENTS AND CREATE READY-TO-WORK GRADUATES.

ExxonMobil Foundation
 Family Medical Transport, LLC
 Federated Investors
 Ferguson Enterprises, Inc.
 Five Loaves Cafe
 Francis Marion Hotel
 The German Friendly Society
 The Harvey Ginsberg Foundation
 Goer Charitable Foundation
 Gosnell Menard Robinson Infante CPA's PA
 Greenville County Commission on
 Alcohol and Drug Abuse
 Harbor National Bank
 Hawkes Learning Systems / Quant Systems, Inc.
 Howell Cay
 Huge Law Firm LLC
 Independent Insurance Agents
 of S.C. Foundation
 Ingram Entertainment Inc.
 International African American Museum
 ISHPI Information Technologies, Inc.
 Jackson Davenport Opticians
 Jewish Federation of Greater Atlanta
 Juanita Greenberg's
 Jupiter Holdings/Buck Lumber
 The Kirk & Megan Kellogg Foundation
 Kiawah Island Golf Resort
 Kindness Is Doing Something
 The Kinzey Company
 Koplin Gallery, Inc.
 Kosman Foundation
 John Liberatos Real Estate Company
 Limehouse Produce Company
 Lortz Family Foundation
 Lowndes Properties
 Mad River Foundation
 Maersk Inc.
 Magnolia Plantation Foundation
 Marine Terminals Management, LLC
 Maverick Southern Kitchens, Inc.
 Maybank Industries, LLC
 McNair Law Firm Foundation
 Medical University of South Carolina Foundation
 Medical University of South Carolina
 Mediterranean Shipping Company, Inc.
 Melvin's Legendary Bar-B-Que
 Roslyn M. Meyer and Jerome Meyer Foundation
 Joseph J. Miller Foundation
 James Creighton Mitchell III Estate
 MJM Yachts, LLC
 Moe's Southwest Grill
 Montague-Betts Company

National Collegiate Honors Council
 National Society of Colonial Dames
 of America in S. C.
 New York Life Insurance Company
 Nexsen, Pruet, LLC
 Nicks Bar B Q
 The O'Brien Family Foundation, Inc.
 Ocean, Inc.
 Olivetti Foundation, Inc.
 Parker Foundation
 Pearlstine Distributors
 Periodontal Associates
 Max & Helen Philippon Foundation
 Pi Kappa Phi
 The Piemonte Foundation
 Play It Again Sports
 John Poston and Co.
 Pronetics Health Care Group
 Rachel Crosby Conway Charitable Foundation Inc
 Rah-Rah, Inc.
 Regions Bank
 Rich Haddad Insurance Agency Inc.
 Roper Saint Francis Healthcare
 Royall Hardware, Inc.
 SCBT, N.A.
 Schwab Charitable Fund
 D.L. Scurry Foundation
 Society of First Families of South
 Carolina 1670-1700
 Oscar & Mona Sokol Foundation
 South Arts, Inc.
 Southcoast Community Bank
 Spogli Family Foundation
 The Sportsman's Shop
 SSA Cooper, LLC
 TBonz Restaurant Group
 Thompson Turner Construction
 Trident Construction Company, Inc.
 Trident Technical College
 UBS Financial Services, Inc.
 University of North Carolina Press
 Womble Carlyle Sandridge & Rice, PLLC.
 Wood-Byer Foundation
 Worthwhile
 The Jerry and Anita Zucker
 Family Foundation, Inc

* Deceased



GRAHAM ERVIN 2005, JOHN RIZZO 2007 WITH SCHOOL OF EDUCATION, HEALTH, AND HUMAN PERFORMANCE DEAN FRAN WELCH AT THE GOLD SOCIETY RECEPTION.

GOLD SOCIETY

The **GOLD (Graduates of the Last Decade) Society** recognizes young alumni donors who contribute \$250 or more annually to the College of Charleston. GOLD Society gifts are a vote of confidence in the values of the College of Charleston and demonstrate an annual commitment to make the College a philanthropic priority. GOLD Society gifts have the power to help today's students define their own College of Charleston experience.

- Megan Elizabeth Alder 2012
Ruth Will Alisuskas 2003
Christian R. Bailey 2012
Kaytlin Helen Bailey 2009
Hillary Friend Becker 2012
Caroline Beeland 2008 and John Moore
Michael Frederick Blanton 2005
Kyle Todd Boggs 2011
Tyler Harrison Chewing 2005
Katherine Coffey Cooney 2004
and Kellen Cooney 2005
William Joshua Cooper 2010
Mitchel Fredrick Cordes 2012
Emily Cunningham Dalton 2003
Meaomee Devos and Brad John DeVos 2011
Kathryn Clay Dunnan 2012
Elizabeth Fulmer Eakes and Charles
Devin Eakes, Jr. 2005
Graham Leslie Ervin 2005
Jamie Lynn Fisher 2012
Eric Lee Floyd 2010
Jessica Morgan Fuller 2009
Justin P. Gaeta 2009
Carina L. Gerscovich 2008
Brian Vincent Giarrocco 2010
Robert Lee Going 2003
Andrea Gorney and David Luke Gorney 2003
Michael W. Grueneberger 2003
Chappell C. Halstead 2004 and
Elizabeth K. Halstead 2004
Angela M. Hanyak 2008
Sarah Permenter Hays 2003 and
Joshua J. Hays 2003
Katherine Anne Heath 2008
William R. Hipp 2011
Boone Knox Hopkins 2008
Elizabeth Brooke Hurt 2008
Christina Dawn Kelley 2011
James Wyatt Kendall 2005
Anna Burnett Klein 2006 and
George Philip Klein 2004
- Christina Callison Kubinska 2007
and Dennis John Kubinski
Stephanie Latham and Zane Paul Latham 2004
Stacey Lathem 2008
Michael Elson Leitman 2004
Walter Price Maguire 2011
Judith J. McMahon and Lawrence
A. McMahon 2006
Lily Harriman Mortimer 2012
Sarah B. Myers 2005
Megan Emily O'Brien 2010
Stephen C. Osborne II 2006
Leigh Scott Page 2005
Richard C. Parks 2010
Michael C. Passarello 2008
Brooke Falk Permenter 2006 and
Christopher B. Permenter 2005
Kelli Wilkerson Polon 2003 and Adam Polon
Bridget Bettelli Price 2003 and Kevin Price
Kimberly Richey 2004
Natalie C. Roberson 2005 and Ross S. Roberson
Rudy T. Rothseiden 2003
Nicole A. Sedlacek 2008
Emily Sekula-Wood 2005
Amy M. Gordon 2002 and Joseph
A. Shepanek 2007
M. Faisal Siddiqi 2005
Katherine Nemecek Smith 2008 and
Gregory McRae Smith 2009
Amy Mixson Stasiukaitis 2011 and
David Michael Stasiukaitis 2007
Sebastian Anthony Steadman 2004
P. Brianne Steiner 2007
Erin Elizabeth Stokes 2004
Meghan L. Sutherland 2009 and
Brandon James Sutherland 2008
Ann Ward Treat 2004 and Ryan Rath Treat 2003
Ashley Heltemes Tylus 2005 and
David J. Tylus 2007
Amos K. Wamweya 2005
Matthew Thomas Wojlawowicz 2008



DIL PATEL 2011, TINA 1978 AND GREG PADGETT 1979, STEVE 1989 AND EMILY SWANSON 1989 AND SAM STAFFORD 1968 AT THE 2012 A CHARLESTON AFFAIR.

LIVE OAK SOCIETY

Taking its name from the majestic live oak trees that make the College's campus so distinct, the **Live Oak Society** recognizes our most loyal donors (those who give consistently for five years or more) who provide the roots of the College's philanthropic foundation. Live Oak Society donors are leaders in making the College of Charleston a priority year after year, and their generosity continues to advance the mission of the College.

20+ YEARS

Karen K. Abrams and Andrew L. Abrams
Saul Alexander Foundation
Robin M. Alexander and Brian E. Alexander 1990
Joe Allen
Carolyn Nesbitt Anderson 1970 and James P. Anderson 1955
Anonymous (2)
Mickie Asleson and Gary L. Asleson
Elizabeth Bramlett Baker 1981 and Charles J. Baker III 1980
Elizabeth Morgan Baker
Nell Prior Baldacchino 1967 and Joseph F. Baldacchino
Roslyn L. Barkowitz and Donald B. Barkowitz
Scooter DeLorme Barnette 1978 and George W. Barnette III 1958
JoEllen Basile and Jan Basile
Charlotte Small Bavier 1943
Jaclyn Krawcheck Berlinsky 1960
Jeannette Moore Bowers
Sondra H. Branch and Lenord M. Branch 1968
Grier Gadsden Brown 1976 and William Glen Brown, Jr. 1976
Sarah Christopher and Remley Rivers Campbell 1968
Janice Clark and Malcolm C. Clark
Coastal Community Foundation of SC
Dorothy Gelson Cohen 1939
Claudia Cohen and David J. Cohen
Ann B. Connellee and William L. Connellee
Sherry Cox and Boyce V. Cox
Joan Severance Cunningham 1960 and Robert C. Cunningham
Mary Beth McKeon Dacey 1993 and Paul B. Dacey
Perrin Q. Dargan III 1984
Joanne Davenport and Leslie B. Davenport 1947
Sally Davis and Alan J. Davis
Daniel B. Day 1983
Janet Deavor and James P. Deavor
Beverly E. Diamond
Katrina B. Doig and Marion T. Doig III 1965
Donna Looms Emerson 1977 and Barry A. Emerson
Mary Cele Smith Faires 1943
Hope Morris Florence 1970 and Terry Florence*
Jeffrey A. Foster
Susan W. Freeman and Harry W. Freeman, Jr. 1967
Jean Matthews Freeman 1945

Lisa Sterling Frizelle 1976 and Timothy M. Frizelle
Neva Anderson Gadsden 1986 and Richard H. Gadsden, Jr. 1981
Lisa Alexander Gadsden 1978 and Frank M. Gadsden 1980
Harriet Lauper Goldberg 1985 and Charles S. Goldberg
Patricia Sullivan Gustafson 1972 and Kenneth S. Gustafson, Sr. 1975
Cecilia E. Haborak 1979 and George E. Haborak
Margaret McManus Hamilton 1975 and Milton E. Hamilton
Suzanne Dobbs Hardwicke 1965 and Wayne Hardwicke
Sylvia Craver Harvey 1958 and Charles Edward Harvey
Dorothy S. Hefner and Frank L. Hefner
Cynthia M. Heldrich and Frederick J. Heldrich III
Elaine Shulman Hirsch 1960 and Paul M. Hirsch
Betty Faris Howell
Virginia Taylor Howell 1989 and Roy A. Howell III 1984
Carol Joy Mackey Hume 1975 and Corey D. Hume 1977
Colleen Wolpert Jernigan 1978 and Bobby Jernigan
Jean W. Johnson and Tapley O. Johnson, Jr.
Karen Burroughs Jones 1974
Sandra Harley Jones 1963 and Kenneth L. Jones 1963
Linda Jones and Gordon E. Jones
Roseann Dennis Jordan 1978 and Robert Waring Jordan 1978
Judith Kaiser and Charles F. Kaiser
Rebecca P. Kay and Ansel C. Kay IV 1985
Joanne Kennerty and William C. Kennerty
W. Frank Kinard
Anne Atwater King 1978 and Kenneth T. King 1979
Mitzi Kirshtein and Sam Kirshtein 1945
Townie T. Krawcheck and Leonard Krawcheck 1962
Sue A. Sommer-Kresse and John L. Kresse
Tina Lacey
Anne Burges Lake 1964 and Joel J. Lake
Jeffrey John Lamberson 1993
Josephine M. Lewis and Andrew H. Lewis, Sr.
Judith Blanchard Linder 1968
Rita W. Livingston and D. Thomas Livingston
Cynthia Harwood Malanos 1970 and George E. Malanos 1968
Amy Thompson McCandless



ANDREW LAWRENCE, CAPTAIN OF THE MEN'S BASKETBALL TEAM, IS ONE OF MANY 2012 STUDENT-ATHLETE SCHOLARSHIP RECIPIENTS ACROSS THE COLLEGE'S 21 VARSITY TEAMS. SCHOLARSHIPS ARE MADE POSSIBLE BY COUGAR CLUB SUPPORT.

Penelope Jones McKeever 1969 and Francis Dennis McKeever
Rhetta Mendelsohn and Joseph S. Mendelsohn
Tony Meyer 1949
Susan J. Morrison
Marlijo Nelson and Rhame Nelson 1988
Melody Nuss* and Jerry J. Nuss 1990
Christine Stiepel Osborne 1978 and C. Wayne Osborne, Jr. 1978
Janelle Othersen and H. Biemann Othersen, Jr. 1950
Tina Pillos Padgett 1978 and Gregory D. Padgett 1979
Cissy Gibbons Parades 1975 and Michael R. Parades 1979
Elise Schweers Peebles 1983 and Paul W. Peebles, Jr.
Jeryll H. Perlmutter 1983 and Martin Perlmutter
Katherine J. Plair and James B. Plair, Jr.
Anne Stender Puckhaber 1947 and Bernard F. Puckhaber 1950
Alexander W. Ramsay
Linda Compton Ravenel and Daniel Ravenel 1972
Ric R. Ravenel and Arthur Ravenel, Jr. 1950
Mary Sandlin Rowell 1971 and Jake C. Rowell
Zoe D. Sanders and Alexander M. Sanders, Jr.
Joann Boyd Sherman 1997 and Mitchell L. Sherman
Rebecca Shackelford Sigmon 1970 and Lee M. Sigmon 1968
Nancy Webb Stafford 1970 and Sam Stafford III 1968
Daisy Porcher Stoudenmire 1957
Melody Booker Taylor 1987 and W. Kurt Taylor 1984
Ione L. Taylor and Carl A. Taylor, Jr. 1979
Mark C. Tiedje
Dana Robinson Tiller 1984 and John H. Tiller 1984
Anita Condon Van de Erve 1970
Patience D. Walker
M. Elizabeth Robinson Weaver 1986 and David W. Weaver
Lettie Pate Whitehead Foundation
Martha Wilson and George David Gentry
Teresa Brown Withrow 1989 and Randall P. Withrow 1990
Betty Wolfe and Leon K. Wolfe, Jr. 1949
John A. Zeigler, Jr.
Anita Zucker

10 – 19 YEARS

Ilonka S. Adbo 1988 and Dave Abdo
Deborah Adams and Jeffrey J. Adams 1991
Marlene Alfred Adlestone 1964 and Lawrence Bursten
Maria Corontzes Alfieris 1976 and Cyrus P. Alfieris
A. M. Allen
Marsha M. Alterman and Douglas J. Alterman
Susan Altman and Samuel H. Altman
Ann M. Amos and William W. Amos 1978
Emmy Lou Anderson
Nancy S. Andrus and Jan F. Andrus 1954
Anonymous (3)
ARAMARK Services
Jean Mosser Araujo 1983 and Mauricio Araujo
Melissa Webb Arscott 1991 and Stephen F. Arscott 1990
Douglas D. Ashley
Associated Container Sales
ATS Intermodal
Ellen Avenoso and Frank Avenoso
Dianne P. Avlon and John Avlon
Anne Barnes and William Barnes IV
Valerie Manatis Barnett 1984 and William Barnett III
Edgar L. Barnett
Patricia Baxter Barrett 1992 and William M. Barrett 1991
Kevin T. Barrett 2001
Timothy G. Barrett
Cheryl D. Bates 1993 and William J. Bates
Doris Faye Baumgarten
Betty Beatty and Guy E. Beatty
Joseph Louis Beaudrot 1977
R. Philip Bees
Marty P. Belk and Donald H. Belk 2000
Benefit Concepts
Ellen D. Benke and R. Andrew Benke 1977
Berlin's Restaurant Supply, Inc.
Eve Berlinsky and Norman Berlinsky
Barbara K. Bernstein and Donald H. Bernstein
Donald H. & Barbara K. Bernstein Family Foundation
Lois S. Berry and Jeffery N. Berry
Thomas V. Bessent, Jr. 1978
Harriet Easley Bessent 1983
K. Tracey Bible 1994 and Kenneth W. Bible
Blanche Blankenship and Tereance L. Blankenship 1982
Robert P. Bland, Jr.

Ann B. Borelli and Raymond F. Borelli
Marie Terry Bosch 1986 and Michael R. Bosch III 1987
Michelle Bouvette and Pierre E. Bouvette 1981
Jane C. Bowen
Donna Kinsey-Ward Bowen 1981 and Claude H. Bowen, Jr.
The Brand Foundation of New York
Eileen Brenner and Milton A. Brenner
Fay Cohen Brickman 1943 and Jack P. Brickman 1942
Marilyn Brilliant and Howard L. Brilliant
Nancy C. Bristol and Ronald H. Bristol
Betty Reames Britt 1960 and Henry F. Britt
Jane Brooks and John J. Brooks
Greyson L. Bryan
Heather Hardy Bryan 1993 and Jason G. Bryan 1993
Lisa Buck and William H. Buck, Jr. 1984
Alison P. Bullard and Michael C. Bullard 1992
Brenda G. Burbage 1993
Ann Dunning Burgess 1961
Elizabeth Middleton Burke 1994 and Richard Burke
John Hartnett Busch 1985
Mary Ann Byrnes 1978
Eda H. Cabaniss and Robert W. Cabaniss, Jr.
Christel R. Carpenter and Rick L. Carpenter 1971
Jeffrey W. Cary 1987
Mimi Cathcart
Scott Cayouette
R. David Chard
Lucia Childs and John H. Childs
Patricia C. Clark
Katharine Wilkerson Claussen 1979 and Arthur Chris Claussen III 1978
Karen G. Coble and James W. Coble, Jr. 1977
Linda Cohen and David L. Cohen
Amy S. Condon and Henry G. Condon 1983
Dorsey Condon and Clarence M. Condon III
Todd Aaron Confarotta 2000
Congregation of Adas Yeshurun
Virginia C. Conlon and Kevin J. Conlon 1991
Brian E. Connolly 2001
Jane M. Corbin and Warren Corbin
Christopher Lee Cordes 1994
Janet Heath Cracraft 1985 and Scott Anthony Cracraft, Sr. 1983
CresCom Bank
Croghan's Jewel Box
Claire P. Curtis
Donna Hyatt Dana 1978

Sheffield Wilson Dana 1963 and Robert G. Dana
J. Belk Daughtridge
Janice Peyton Davidson 1983
Leigh A. Davis and Ryan P. Davis 1994
Justa B. Debnam and George F. Debnam, Jr. 1994
Mary Bern Decker
Leilani DeMuth
Dixie Furniture Company
Mary F. Dolliver and Joseph F. Dolliver
John Dolven
Carolyn Draisin and Neil W. Draisin 1965
Sylvia K. Dreyfus and Robert L. Dreyfus
Larry Driggers
Mary Catherine Donnelly Dubois 1984 and Joseph Dubois
Whitney O. Duffy and Edward W. Duffy, Jr. 1983
Calvine Dunnan and Douglas M. Dunnan
Deborah T. Duwel and Philip S. Duwel 1965
E and L Management Services, LLC
Lynn F. Eads and Albert E. Eads III 1982
Meb Eady and John L. Eady 1963
Barbara Eaton and George Eaton
Elizabeth Eaton and Frank E. Eaton 1960
Nancy D. Edwards and Ralph Edwards
Dayna Elliott and Richard D. Elliott
Elliott Davis, LLC
Barbara J. Ellison and Haskell Ellison
Evelyn W. Engel and Herbert A. Engel
Susan Euart and John F. Euart
Donna Londergan Evans 1985 and Eugene C. Evans
Henrietta Mikell Evatt 1987
Family Circle Cup
Betsy Allen Fanning 1987 and Jack Fanning
Ferguson Enterprises, Inc.
Lisa K. Ferrett 1974 and Donald A. Ferrett 1976
Terry Becker Fisher 1984 and Dennis J. Fisher
Jaquelin P. Fleet
Melanie S. Floyd and Alfred J. Floyd, Jr.
Dorothea Benton Frank and Peter Richard Frank
Darryl Jerome Fyall 2001
Joan Swanson Gaetke 1974 and Theodore Gaetke
Birgitta Gaud and William Steen Gaud 1965
Patricia R. Goff
Norma Goldberg and Sanford B. Goldberg 1961
Suzanne Googer and Marcus D. Googer
Miriam Brotman Gordin 1955 and David Gordin
Nancy Gorski and Paul T. Gorski
Elizabeth Tiller Gourdin 1980 and Theodore G. Gourdin 1981

J. Michael Grant
Judith L. Green and Mark R. Green
Eddie Gregory
Deborah Wise Guerry 1980 and John Everett Guerry III 1977
Carol P. Hacker and Ronald F. Hacker
Barbara Hallberg and Harold Thomas Hallberg
Richard R. Hallin
Elizabeth Stevens Ham 1980 and Forrest Cleave Ham
Libby Hamilton and Ronald T. Hamilton
Lizanne Hanckel and John Hanckel
Dorinda Q. Harmon and Terry Harmon
Eileen S. Harris 1978
Kenneth E. Hauck 1958
Wynne Elliott Outlaw Hawkey 1991 and Brian K. Hawkey 1990
Hay Tire Company, Inc.
Mariana Ramsay Hay 1982 and David M. Hay 1981
Cheryl Hay and Henry M. Hay III 1985
Laurin D. Hayes-Baker 1996 and Michael V. Baker
Sarah Permenter Hays 2003 and Joshua J. Hays 2003
Claire Patricia Healy 1988
Susan B. Heath and Arthur J. Heath
Hebrew Orphan Society
Elaine Heckelman and Joseph Heckelman
Ann M. Hellman and Max B. Hellman
Lucius W. Heriot, Jr.
Hibernian Society Foundation
Pamela Hightower and James F. Hightower 1982
Marilynn Wood Hill and John A. Hill
Kelly Kaiser Hiott 1986 and Stephen Brian Hiott 1986
Gery W. Holforty 1977
Charles F. Hollis, Jr.
William Barnwell Holt 1974
Jennie Houser
Janet McGee Howe 2011 and Russell D. Howe
Valerie Baker Howell 2002 and Scott S. Howell 2002
Lee Jones Hrechko 1984 and Randall Alexander Hrechko
Katy Hufnagle and Jon Hufnagle
Reba Kinne Huges and Harry Huges
Susan Stansell Huggins 1989 and Tracy S. Huggins 1991
Constance L. Hughes and Lowry D. Hughes
Vivian Viles Huguley 1974 and John E. Huguley, Jr. 1972
Elizabeth Young Hund and Paul W. Hund, Jr.

Elizabeth Bargmann Hunter 1947
and James E. Hunter
Noelle Irelan and Michael C. Irelan 1997
Jackson Davenport Opticians
Margaret M. Jamieson and James W. Jamieson
Carole Lane Jaques 1963 and
Charles A. Jaques 1963
Clarence Bradford Jeffcoat, Jr. 1992
Mignonette Jensen and Vern Jensen
John Poston and Co.
Terry L. Johnson and Carl R. Johnson 1971
Cynthia Hay Johnson
Margaret Johnston and Bradley L. Johnston
Lucie M. Jones and Garvin Jones
Mary J. Jordan and John M. Jordan, Jr. 1962
Roseann Dennis Jordan 1978 and
Robert Waring Jordan 1978
Jupiter Holdings/Buck Lumber
Carol A. Kelly and Patrick J. Kelly
Jo Ann Q. Kent and Thomas Kent
Robert N. Kersey IV
Rose Koester and Thomas Frederick Koester III
Michael S. Kogan
Kaye Koonce and James Randall Koonce 1987
Vickie C. Lambert and Martin J. Lambert 1982
Marie M. Land and John C. Land III
Mary Wilson LaRoche 1979 and Stan LaRoche, Jr.
Mary E. Layton and David A. Layton
Rebecca D. Lee and Hampton J. Lee 1984
Laurie Miller Lempesis 1988 and
Basil L. Lempesis 1979
Dianne Lever and Benjamin R. Lever III
Elizabeth R. Lewine
John Liberatos Real Estate Company
Arthur L. Liberman 1991
Marcia Lighthart and David J. Lighthart 1981
Catherine Cooper Lipp 1997 and
James Lewis Lipp 1999
Joseph Lipton
Stephen W. Litvin
Kathleen Holtz Low 2000 and
David M. Low 1998
Teresa Major Luhrs 1983 and William J. Camp
Elisabeth S. Lynch and Spencer J. Lynch
Jeannette Foster Lyons 1954 and Jack A. Lyons
Maersk Inc.
Cathryn Hill Mahon 1980 and
Thomas Mahon II 1974
Lisa D. Main and Emory S. Main
Susan Clark Marlowe 1976 and Robert
William Marlowe 1971
Sharon Martin and Jerold Martin

Marianne L. Martino and Ralph Martino
Abigail Sullivan Massalon 1985 and
John A. Massalon 1984
Michael W. Massey, Jr. 1987
Susan D. Master and Michael Master
Mai McCrory
Gwen McCurdy and Layton McCurdy
Katherine Mooror McDermott 1979 and
James Patrick McDermott 1978
Ingrid B. McDonald and Thomas F. McDonald
Allison Shire McKittrick 1995 and
Clifford W. McKittrick 1997
Doris L. Meddin
Vickie Menard and Michael L. Menard 1980
Jennifer Mendelsohn and David
B. Mendelsohn 1994
Jane Mendelsohn and Burnet Mendelsohn
MI-TECH, Inc.
Melissa Tarte Michel 1992 and
Mark C. Michel 1991
Emily F. Mikell and G. Lee Mikell 1984
Julie Sizemore Miller and D.
Sherwood Miller III 1974
James B. Miller
Phyllis P. Miller
Dolores Floyd Millings 1993 and
Ronald A. Millings 1994
Kerry Mobley Missel 1976 and
Frederick G. Missel, Jr. 1976
Jean Mitchell and David C. Mitchell
Pamela Moise and Robert M. Moise
Kimberly Deans Molthan 2000
and Mark A. Molthan
Annaliza Oehmig Moorhead 1992
and John Kirkman Moorhead
Valerie B. Morris and Boris Bohun-Chudyniv
Joyce D. Morris
Cathy Morse and John Tucker Morse
Lawrence Hale Moser 1982
Alexa S. Mosteller and Charles S. Mosteller 1981
Beth Mullen and William W. Mullen 1973
Angela T. Murray and Samuel M. Murray 1975
Susan Rudisill Myers 1990 and Andrew Myers
Carol A. Mysel and Allan L. Mysel
Sue Nelson and Paul T. Nelson
Melissa Starr Nelson 1994 and
Harrison Shelby Nelson 1994
Robert F. Neville
Teresa Davis New 1996 and Robert New
Diane S. Newman and Roger Newman
Margaret Newman and Michael David Newman
Judy W. Olitsky and Harvey J. Olitsky

Haley C. Ottley and Julian T. Ottley 1990
Rebecca C. Parker and John H. Parker 1993
Barbara Patrick and Gardner Patrick
F. Michelle Adkins Patterson 1987
and Douglas K. Patterson
Edwin S. Pearlstine, Jr.
Patsy K. Pettus
Eileen Pflum and Ted Pflum
Sandra A. Poliakoff and Edward E. Poliakoff
Mary Jo Potter and William Z. Potter
Margaret M. Powell and John E. Powell
Bridget Bettelli Price 2003 and Kevin Price
Christine W. Pringle and Walter M. Pringle 1989
Mary Baker Pringle 1968
Pronetics Health Care Group
Cynthia Ann Propst 1981
Saundra W. Purvis and John S. Purvis
Robin H. Query and Erwin L. Query, Jr. 1977
Rah-Rah, Inc.
Jeanne G. Reagin and K. Britt Reagin 1998
Joseph Steven Renau 1993
Kathryn Gianatos Rentiers 1951
Sanita Richard and Fred L. Richard
Kenneth L. Richardson
Jennifer Richardson and Joseph Richardson
Betty B. Riggs
Patricia Ring-Jablonski and Richard C. Jablonski
Charles Rittenberg 1995
John Minott Rivers, Jr.
Patricia G. Rivers 1999 and James A. Rivers
Claire Z. Robinson and Clyde Robinson
Ellen Rodenhauser Rebman 1999
and William P. Rebman III
Renee Buyck Romberger 1981
and Randy Romberger
Grady G. Roney
Miriam Rosenblum and Jeffrey M. Rosenblum
Tricia Roth and Benjamin Roth
Rose Condon Hamm Rowland
1972 and John Rowland
Susan L. Rozzi and Claude J. Rozzi
Renee Couturier Runey 1979 and
Leon G. Runey 1973
Brenda C. Rush and Robert M. Rush
Cheryl W. Sargeant and Mark D. Sargeant 1987
Janet Wells Scarborough 1998 and
George C. Scarborough 1975
Theresa H. Schuyler and Dean Schuyler
Marianne Seabrook and Luther Seabrook
Michele Hendren Seekings and
Michael S. Seekings

Beverly D. Seinsheimer and Walter
G. Seinsheimer, Jr.
Mindelle Kaplan Seltzer and Norton M. Seltzer*
Regina Kronsberg Shapiro and
Samuel R. Shapiro
Gary E. Shealy 1982
Kathleen Sheftall and Benjamin F. Sheftall
Kathryn Edwards Sherrod 1993 and
William Llewellyn Sherrod II 1993
Linda Shortridge and Kenneth Shortridge, Jr.
Barbara Hollings Siegling 2001
Skirt! Magazine
Westby Slade 1985
Harriet B. Smartt and Richard W. Smartt
Kevin Michel Smith 1992
Amy C. Smith and James D. Smith, Jr. 1993
Sandra Smith and Shawn R. Smith 1996
Susan M. Smythe and Henry B. Smythe, Jr.
Marcia Susan Snyder 1993
Oscar & Mona Sokol Foundation
Marcia Spar and Harvey M. Spar
Doris A. Spaulding and George G. Spaulding
Jean Rouse Spell 1958 and Pete Spell
Ruth Barrett Stanaszek 1949
Nancye B. Starnes and David P. Hughes
Diana Stauffer and Michael J. Stauffer 1995
Patricia H. Steiner and Maurice L. Steiner
Ellen S. Steinberg and Robert M. Steinberg
Deb Strickler and Paul Strickler
Katherine Watkins Strubeck 1980 and
Louis R. Strubeck, Jr. 1980
Ashley Gerhardt Stuckey 1999 and
Scott Ray Stuckey 1992
Diane Sula and Richard L. Sula
Marie Hebert Sullivan 1987
and Kenneth Sullivan
Emily Molony Swanson 1989 and
Steve Dean Swanson 1989
Karen Tarpey and John David Tarpey 2000
Tina Louise Taylor 2000
TBonz Restaurant Group
Nancy Tezza and Mark J. Tezza 1980
Samuel Duane Thomas
Kelly Workman Tick 2001 and Louis C. Tick 1998
Carlin Morris Timmons 1997
and Clyde W. Timmons
Marlies G. Tindall
Sharon Toporek and Edwin Toporek
Ijo Toporek and Stanley D. Toporek 1961
Terry Tranen
Donna Lawhon Trapp 1979
Janice Kirshstein Turner 1988 and James Turner

Belle Stoddard Tuten 1991 and
James H. Tuten 1990
Henry Tuten
Carolyn Schanen and Jeffery L. Twiss 1984
Uricchio, Howe, Krell, Jacobson,
Toporek, Theo and Keith, PA
Julie Radnor Usherwood 1989 and
Robert W. Usherwood
William H. Vandiver 1970
Jack Vane
Judith S. Vane
Kathleen M. Wagner and Zachary
G. Wagner 1994
Courtenay T. Wallace 1986
Michael B. Walsh 1981
Lee Ann Mappus Walsh 1977 and Dale Walsh
Mary Ellen L. Way and Charles S. Way, Jr.
Lisa B. Weil and Adolph Weil III 1979
Dorothy Weiner
Caroline Jones Weinheimer 1951 and
Charles A. Weinheimer, Jr.
Sarah Wilkins Weiss 1982 and Wayne Weiss
Wendy Anne Welch 1990
Frances C. Welch
Darrell M. Wells 1996
Wells Fargo
Caroline Welch West 1993 and William West
Jacqueline M. Whelan and Stephen
W. Whelan, Jr. 1975
Eva Layne Wicks 1983 and James L. Wicks
Thomas R. Wieters
Kathryn Clarke Wiley 1997 and William Wiley
Deborah Wilkens 1980 and Thomas L. Wilkens
Carol S. Williams and George W. Williams, Jr.
Harriet P. Williams and George W. Williams
Libby Winthrop and John Winthrop
Cheryll Novak Woods-Flowers 1981
and Harold C. Flowers
Elizabeth M. Guerard Wright
and Richard T. Wright
Tomi Gray Youngblood and M.
William Youngblood
Alvin Zak
Mindelle R. Ziff and Loren R. Ziff
The Jerry and Anita Zucker Family
Foundation, Inc.

5 - 9 YEARS

4S Builders, Inc.
Roger W. Ackerman



THIS YEAR'S WINTHROP ROUNDTABLE, HELD ON RIVERS GREEN BY THE FRIENDS OF THE LIBRARY, FEATURED CHEF SEAN BROCK OF HUSK AND MCCRADY'S RESTAURANT, AND USC PROFESSOR DAVID SHIELDS.

- Maxine Walters Ackerman 1949
and Raymond E. Ackerman
Anne Dixon Adams 1993 and Mark A. Adams
Nathan and Marlene Addlestone Foundation
Hazel Adkins
The Agricultural Society of South Carolina
Mary A. Akers and Randy L. Akers
Jeffrey Akhtar
Sharon Wakefield Alderman 1985
and James F. Alderman
Ruth Will Alisauskas 2003
Allen County Public Library
Jennet Alterman and Jack M. Alterman
Susan D. Altman and Charles S. Altman
Constance Anastopoulo and Akim A. Anastopoulo
Joy English Anders 1980 and Bryan Anders
Jane Anderson and Allan J. Anderson
Renee D. Anderson and Ivan V. Anderson, Jr.
Florence Robinson Anderson 1990 and
Thomas Randolph Anderson 1977
Anonymous (8)
Judith E. Appel and Samuel Appel
Margaret Stroman Archer 1994
and David W. Archer 1991
Marilyn Armstrong and Alan Armstrong
Katherine Howard Arnold 2000
and Jean R. Arnold
Gerry Sue Arnold and Norman J. Arnold
Ellen F. Arnovitz
Art Institute of Charleston
Joy P. Ashburne and W. Stan Ashburne 1973
Dottie Ashley and Franklin B. Ashley
Christine Atkinson and Robert H. Atkinson, Jr.
Stephanie Wahn Auwaerter
Laura Hills Avinger 1983 and
James F. Avinger, Jr.
Efrayim Ben Avraham
Sandra Milner Ayoub 1963 and Pete Ayoub
Gaillard Townsend Bailey 1967 and James Bailey
Vickie Baker and Tommy B. Baker
Earle David Balis 1942
Nathaniel Ingraham Ball IV
Banks Construction Company
Nancy Leopold Banov 1988 and Charles Banov
Pamela G. Barbarino
Gretchen S. Barbatsis
Nella Gray Barkley
Denise M. Barnes 1991 and Russell F. Barnes
The Barnet Foundation Trust
Nancy Thompson Barnwell and
Nathaniel Elliott Barnwell
- Shirley Baucom and Herbert
Wayland Baucom III 1991
Stephen J. Baumrind
BB&T
Genevieve Handal Beach 1987 and RJ Beach
Amy Tibbals Beale 2001 and Evan Beale
Beatty Realty Company
Laura Lynn Beauvais 1979
Condra Baskin and Stephen
Robert Beckham 1978
Laura Stuart Becton 1993 and
James L. Becton, Jr.
Ed Behrens
Elena Bell and Alex Bell
Jane Benson and George Benson
Berle Manufacturing Company
Joan Berlinsky and Melvyn Berlinsky
Marlene Maher Bilton 1957 and
Robert L. Bilton 1955
Bishop Gadsden Retirement Community
Blackbaud
Mikki Blackman and Norman B. Blackman
Haley Hobbs Blackston 2004 and
Charles T. Blackston, III
Ann Blake and Barry Blake
Nancy Wilkins Blakeney 1961
and E. DuBose Blakeney
William K. Blakeney
Sol Blatt, Jr.
Blockhead Builders, LLC
EttaLeah Bluestein and Nathan J. Bluestein
Bess Brockington Bluestein 2002
and Brett A. Bluestein 1997
Rita S. Baldwin and Samuel B. Blythwood*
BMW Corporation
Sylvia M. Boineau and Maxcy C. Boineau 1958
Leslie Bolick Bolden 1989 and Dana Bolden
Sharla A. Gould and James F. Bowring 2000
Florence Wilson Brady 1951 and Leo F. Brady
Cynthia Farr Branch 1985 and
Anthony M. Branch
Lee Breeden and James O. Breeden
Gerald J. Bresnihan 1983
Alice H. Brewer
Patricia Slaughter Brown 1979
and William S. Brown, Jr.
Cora M. Brown and Earnest L. Brown 1976
Carol L. Browne and Robert A. Browne
Janet Brownstein
Ben Bryson
Janet L. Bryson and Joseph C. Bryson
Sharon Buehler and William F. Buehler



SCHOOL OF SCIENCES AND MATHEMATICS DEAN MIKE AUERBACH (RIGHT) WELCOMES DONORS TO THE FROM THE MOON: MAPPING & EXPLORATION EXHIBIT FUNDED BY NASA AND THE NASA LUNAR SCIENCE INSTITUTE.

Priscilla D. Burbage and Walker Burbage
Thomas Patrick Burns 1999
Burriss Liquor Store
Richard Douglas Cain 1986
Scotty W. Cannon 1994
Robert E. Cape
Ann R. Cario-Hurley 1981 and Darel C. Hurley
Frances Willeford Carlisle 1940
Diane B. Carr and Robert S. Carr
Cornelia Carrier
James E. Carroll, Jr. 1978
Edgar T. Cato Foundation
Judith Cato
Meredith Lee Chance
Jill Tate Chapman 1997 and Troy V. Chapman
Marnie Chardon and Marc Chardon
The Charleston Club
Charleston Wine + Food Festival
Cary Chastain
Sharon G. Choice 1994 and Isiah Choice
Kay Ciganovic and Denny D. Ciganovic
City of Charleston
Gail Clark and Robert E. Clark 1976
Demetria Noisette Clemons 1975
Kimberly J. Lathbury-Clontz 1992
and Bryan K. Clontz 1993
Clare Cochran 1981
Cara Goodman Cochran and Jeffrey
Brandon Cochran 2004
Caroline Weston Cohen 1954 and
Maurice Herbert Cohen
Mary Ann K. Colbert and Timothy J. Colbert
College of Charleston Alumni Association
Amy K. Comer and Paul N. Comer 1997
Debbie Coggin Compton 1985
and David J. C. Compton
Gale Compton and John K. Compton
Eleanor Condy and William J. Condy
Rodney Conner 1997
Caroline O'Rourke Cook 1979 and Dixon Cook
Pamela Ready Cook and Larry Thomas Cook
Mary Schwertfeger Cook 1981
and Gene W. Cook 1979
Patricia Copeland and Earle V. Copeland 1993
Maria A. Cordova and Carlos F. Salinas
Jamie Corkran and Sewell Corkran III
Kaye R. Cornmesser and George B. Cornmesser
Cougars LLC
Elizabeth Leigh Counts 2000
Nancy S. Coursey 1988 and William Coursey
Charlotte Lee McConnell Cox 1996
and Eric S. Cox 1993

Amy P. Coy and Jason P. Coy
Linda Swain Crabbe 1978 and Mark Crabbe
Ronald Terry Craig 1983
Jocelyn Craig and Michael Craig
Carolyn J. Cremins and Bobby Cremins
Mildred M. Crispyn and G. Joseph Crispyn
Bette Mueller-Roemer and James W. Crocker
David W. Crowley 2002
Anne Bowen Dabney 2005 and
David Murry Dabney 1999
Anna D. Dangerfield and Timothy
N. Dangerfield 1976
L. Cherry Daniel 1975
Georgia Homer Darby 1985 and
John Charles Long Darby
Colleen Dargan
Jill Rabon Davidge 1982 and
Nicholas A. Davidge
John G. Davis
Davie L. Davis and James C. Davis
Margaret Johnson Davis
Mary Walters DeAntonio 1973
Sandra E. Deering and Spencer S. Deering
The Charles Delmar Foundation
Kathleen Madlinger Dempsey 1977
and Davis W. Dempsey, Sr.
Sara Givler DeWolf 2002 and
Benjamin Karel DeWolf 2002
Rhea Giesy Dexter 2000 and Brad Dexter
Rosanne DiFonzo and Mario DiFonzo
Edmond A. Dixon
Elliott Dodds
Helen Michel Dodds 1963 and Kenneth Dodds
Gaylord and Dorothy Donnelley Foundation
Sarah L. Donnem
Wendy M. Dopp and P. Steven Dopp
Catherine Sandlin Dority 1999 and
Roland William Dority 1991
Margaret Burn Dougherty 1946
and Donald Dougherty
Kelly Douglass and John D. Douglass 1999
Barbara M. Duval
Sheila Maher Dworkin and Paul H. Dworkin
Robert Dziadosz
Elizabeth Fulmer Eakes and Charles
Devin Eakes, Jr. 2005
Susan B. Eastmer and Loren J. Eastmer
Margaret L. Ehrhardt 1967
Marie A. Eibel and Patrick H. Eibel
Ryan Jacob Eleuteri 2002
David Ellison
Deborah L. Ellison and Morris A. Ellison

Candace Emsiek and Richard Emsiek
Joe Engel
Joanne B. Epley
Barbara P. Estes and Robert T. Estes 1950
Yvonne duFort Evans 1958 and
L. Wilbur Evans 1951
Kathryn K. Evans and Beau B. Evans 2001
Rella Eysen and Alan F. Eysen
Linda L. Fantuzzo 1978
Lisa Harrell Farmer 1986 and Sean Farmer
The Farmer Family Foundation
Helen Fassuliotis and George Fassuliotis
Nancy G. Fedder
Sharon L. Feinberg and Dennis A. Feinberg
Theodora Feldberg
Judith G. Fellers and Henry Fellers
Suzanne Cashion Ferrara 1979 and
Robert M. Ferrara 1972
Prudence Finn and William A. Finn
Charlotte A. Fischer and Louis C. Fischer III 1956*
Elisabeth G. Fischer and Paul M. Fischer
Patricia Fisher and David Fisher
Herzman-Fishman Foundation (Leo
and Carol H. Fishman)
Maura K. Fitzgerald and Michael K. Fitzgerald
Charlotte Flint and Michael J. Flint 1977
Trisha Folds-Bennett and Brett Bennett
Mark P. Forster 2006
Foundation For The Carolinas
Harold I. Fox 1947
Fox Music House, Inc.
Terry C. Fox
Francis Marion Hotel
R. Pringle Pipkin Franklin and
Samuel C. Franklin, Jr.
Karen Fraser and Christopher B. Fraser
Elizabeth Mitchell Fraser 2006
and David A. Fraser 2004
Alberta Way Freeman and Robert
L. Freeman 1978
Samuel Freeman Charitable Trust
Stephanie Infinger Frick 1983
and Walter M. Frick
Margaret Collins Frierson 1985
and Gregg N. Frierson
Irwin H. From
Christopher Michael Fulmer 2000
Claire K. Fund
Lynn Gagliardi and Michael E. Gagliardi
Kelli Marlene Garrett 1989
Ann Garris and Hollis Garris
The Gavalas-Kolanko Foundation

William Chad George
Jennifer Gianoukos and Andrew
A. Gianoukos 1994
Anthony James Gianoukos 1981
Gianoukos Brothers, LLC
Laura Gianoukos and James A. Gianoukos
Jessica Gonzales Gibadlo 1997 and
James Brent Gibadlo 1997
Suzanne Giffen and Terry Giffen
Janet Gilston and David M. Gilston
Jerry D. Gimarc and Benjamin M. Gimarc
Karen Glassman and Richard H. Glassman
Andrea Hilsman Glenn and E. Vernon Glenn
Goer Charitable Foundation
Edward A. Goldberg
William H. Golod
Jane H. Goodridge
Amy M. Gordon 2002 and Joseph
A. Shepanek 2007
Andrea Gorney and David Luke Gorney 2003
Sherri D. Gotts and Lawrence J. Gotts
Enrique G. Graf
Jule S. Graham and Maynard Pearlstine
Dorothy E. Grantham and William
P. Grantham 1996
Anna Tsalapatas and George Gratzick
Pat Gray and Timothy Gray
Bill Green
Phillip H. Greenberg
Glenna D. Greenslit
Linda W. Griff and Michael B. Griff
Michael W. Grueneberger 2003
Nancy Sharkey and Keith Grybowski
Martha Ellis Gwin 1985
Michael W. Haga
Ann Hastings Hahn 1985 and Tom R. Hahn
Raphael M. Haller
Linda Hammill and Thomas A. Hammill III 1988
Devon Wray Hanahan 1987 and Bill Hanahan
Patricia Hanawalt and John B. Hanawalt
Nikki Hardin
Loretta G. Harrison
Susan Hartman and John C. Hartman, Jr.
Elizabeth Haskin and William B. Haskin, Jr. 1986
Kendra Haskins and Michael Haskins
Katharine Green Hastie 1970 and
J. Drayton Hastie, Jr.
The Hat Ladies
Henry J. Hahn III
Lisa Wall Hawkins
Denise L. Heaney and Brian N. Heaney 1999
Lyn B. Helfers and Eric C. Helfers 1966

Janice E. Hensel and Paul W. Hensel
Mary Elizabeth Heston
Heyman Associates, Inc.
Elizabeth Hiers and Daniel R. Hiers 1991
Leigh Higgins and Paul C. Higgins
Jane P. Hill and John M. Hill
Hillel: The Foundation for Jewish Campus Life
Tula Zecopoulos Hilyer 1991 and
Randall S. Hilyer 1984
Elizabeth Koth Hinesley 1963
and Madison Hinesley
Anne Castrichini Hodaly 1979
and Tawfiq F. Hodaly
Eleanor Rogers Hodges 1985
Peggy Hoeflerlin and Jim Hoeflerlin
Kathy Williamson Hoke 1979
and Harry F. Hoke III
Evelyn Holbert and Conrad A. Holbert, Sr.
Beth Holder and Thomas M. Holder
Cynthia L. Hollen and Philip Avery
Caroline Holt and R. Edward Holt IV
Cynthia L. Hope 1988 and
William Daniel Dickison
Isabel Ward Hopkins 1986 and John R. Hopkins
Karen Horowitz and Jay Horowitz
Patricia Horton and Richard Horton
HospitalityStaff
Sherri Montgomery Howie 1987 and
Theodore V. Howie, Jr. 1983
Edith Howle and Rick Throckmorton
Huge Law Firm LLC
Mark Carter Huggins II 1995
Ann-Therese Hyman and Eli H. Hyman 1986
Peter S. Hyndman
Patricia Lybrand Iler 2005
Virginia Imershein and Richard E. Imershein
Deborah H. Imperatore and Harold J. Imperatore
Walter Wendell Infinger 1942
Brenda Isaac and Bob Isaac 1958
Jewish Federation of Greater Atlanta
Donna Johnson and Gary W. Johnson 1976
Marilyn Johnson and Edwin Johnson
Judith Johnson
Melissa Merlau Johnson 1997
Kristen Carlisle-Hickey Johnson
1997 and Beau B. Johnson
Mary G. Johnson and Marshall D. Johnson
Harold W. Jones
Sandra Harley Jones 1963 and
Kenneth L. Jones 1963
Kimberly A. Jordan and Creg M. Jordan 1990
Amy F. Joseph and George Joseph

Pamela Kaplan and Stanley Martin Kaplan
Elizabeth W. Kassebaum
Susan B. Kaufman and Louis J. Kaufman
Ann Keane and Raymond C. Keane
Brandy Keener and John Keener
Barbara Keil and Julian E. Keil
Sherry Kelley and Michael A. Kelley
Sarah Kemp and Taylor A. Kemp 2005
Daniel A. Kendall 1998
Maureen W. Kerrigan and Stephen R. Kerrigan
Lynne Loring Kerrison 1982 and L. Buist Kerrison
Nicole Carnahan Kersey 2006
Lenora Kessler and Raymond A. Kessler, Jr.
Stan C. Kimer
Tony Kimer
Sheryl Kimerling and Jonathan Kimerling
Amy McDonald Kinar 1977 and
Jeffery E. Kinar 1977
Sharon Brock Kingman 1980
and Russell Kingman
Margaret B. Kirchner and Kenneth
J. Kirchner 1979
The Kite Foundation
Anna Burnett Klein 2006 and
George Philip Klein 2004
Gary C. Klein
Joseph D. Knight, Jr. 1983
Susan Knox and David A. Knox
The Knox Foundation
Charles G. Koch Charitable Foundation
Carol Kohn and Warren A. Kohn
Julie A. Kornahrens 1984
Kosman Foundation
Lora R. Kratzok and David G. Kratzok
Shelley S. Kriegshaber and
Robert M. Kriegshaber
Marcus E. Kronick
Marsha Y. Kronick and Richard A. Kronick
Paula Kutcher and Leslie Kutcher
Betty H. Lancer
Julia Rachel Landreth-Cromer
1993 and David A. Cromer
Sandra Rogers Langenbach 1962
and Harold F. Langenbach
Janet Leeds and Robert Leeds
Nancy Leet and George Leet
Patricia Legasey and Edward E. Legasey
Michael Elson Leitman 2004
Nancy McCoy Lemons and John W. Lemons 1993
Mary Eileen Leonard 1945
Cheryl Martschink Leonard 1974
and Gary O. Leonard

Rose Levin and Theodore Levin
Alice F. Levkoff
Barbara Levy and Eugene Levy
Penelope A. Levy and Paul Levy
Sandra S. Levy and Leslie W. Levy
Margaret Elizabeth Lewis
Limehouse Produce Company
Frances Lindner and S. Craig Lindner
Meyer Lipman
Helen S. Lipsky and Irving Lipsky
Sandra G. Lipton and Morey Lipton
Frances Cain Lofton 1979 and Lionel Lofton
Susan R. Lourie
Lowndes Properties
Jane E. Lurie and Robert D. Lurie
Anne Lyndrup and Allen W. Lyndrup
Linda B. Lynn and Stuart Lynn
Carl Mabry
Richard T. Maclean 1988
Ross A. Magoulas
Brooke Manheimer and Jeffrey
P. Manheimer 2001
Trenita V. Manigault
Linda D. Manning and Raymond A. Manning
Dorothy M. Marban
Laura L. Marchant and William
Wood Marchant III 1989
Betsy Marchant and W. Bristow
Marchant, Sr. 1977
Sabrina Vogel Marler 1986 and Mark E. Marler
Nina M. Marsh-Thomas 1997 and Rory J. Thomas
Bradford S. Marshall and Charles
K. Marshall 1976
Katherine Brockington Marshall 2003
and James M. Marshall 2002
Wanda C. Martin and Thomas R. Martin
David P. Masich
Carolyn Matalene and H. William Matalene III
Sue Smith Mathews 1977 and
Thomas D. Mathews 1964
Sylvia A. Matthews 1983
Judith K. Matuny and Morton G. Matuny
Linda McClenaghan and Richard Gaskalla
Mary Sue Nunn McDaniel 1994
and George W. McDaniel
Harriet P. McDougal
John McFadden
Kellee Schreiner McGahey 2010 and
Robert J. McGahey III 2000
Dawn McIntyre and Fred P. McIntyre
Susan McKenna and James McKenna
Martha McKinney and J. Roland McKinney 1949

Justin R. McLain 1997
Keely Campbell McMahan 1990 and
David Michael McMahan
Judith J. McMahon and Lawrence
A. McMahon 2006
Marjorie A. McMillan and Donald E. McMillan
Mary W. McNab and James R. McNab, Jr.
Anne W. McNeal
Pamela Smith McNish 1988 and Steven McNish
Sabine Mallard McWhirter 2000 and
Dewey Y. McWhirter III 1996
Dorothy H. Meacham
Nancy N. Mendelson and Bernard
P. Mendelson 1953
Beth Pierce Meredith 1997 and
Robert R. Meredith, Jr.
Mortimer Bernanke
Adrienne Grubman Meyer 1965
and Gerald Meyer
Michelin North America, Inc.
Eileen Middleton and William Middleton
Susan Burnett Mikell 1981 and
Steven G. Mikell 1978
Risa Milbauer and David Milbauer
Joanne Milkereit and John Milkereit
Joseph J. Miller Foundation
Mary Ellen Millhouse
Joseph David Mitchell 1980
Moe's Southwest Grill
Janette W. Moody
Tanzy Fields Moore 1984 and James Moore
Edna Quinby Morgan 1935 and Hollis Morgan
Lissy L. Morgan and David L. Morgan
Carol Morgan
Christopher T. Morgan 1989
Laura E. Moses
Vasiliki Moskos
Charles Stewart Mott Foundation
Ruth A. Moyer 1975
Linda Pate Mullinax 1980 and Lee H. Mullinax
La Guardia Smith Myers 1993
and Anthony T. Myers
Ben Navarro
Lynn Nellius
Darla Batson Nettles 1959
Mary Tollner Nichols 1955 and
George H. Nichols, Jr. 1952
Jan Barrick Noble 1992
Cindy Bowman Noel 1988 and Gary Noel
Mary Norton and Joe Norton
Mary Notari and Robert E. Notari
Wilfred Novit

Mildred Bowen O'Brien
Mindy Odle and David Odle
Thomas E. O'Donnell
Charles I. Oh 1981
Lisa O'Neill and Dennis O'Neill
Jan Newman Ordway 1962 and Earl Ordway
Mary Osborne and Stephen C. Osborne 1973
Bobby F. Ott
Margaret O. Owen and David H. Owen III
Marie Paccione and Michael K. Paccione 1988
Elizabeth Rasor Page 1984
Traute Page
Marguerite B. Palmer
Palmetto Exterminators, Inc.
Palmetto Primary Care Physicians
Norma C. Palms and John M. Palms
Margaret Blair Parlman 1981
Christopher E. Pastelak 1984
Sandra S. Patterson 1971
Robin Shanholtzer Paulman 1999
and Justin Paulman
Edward Malcolm Payne III
Allison Payne and John T. Payne 1993
Pearlstone Distributors
Patricia Pektos
Linda Hough Perangelo 1975
Periodontal Associates
Diana Permar and Mark Permar
Sarah A. Peterson and Clyde E. Peterson
LaVonne Phillips
Mary S. Phipps and Howard Phipps, Jr.
Heather Pieper-Olson 1998 and
Todd Allan Pieper
Piggly Wiggly Carolina Co., Inc.
Elizabeth Steffens Pilcher 1977
Gail M. Pilgram and M. E. Wilson
Will Player
Rebecca Polk and N. Keith Polk, Jr. 1958
Patricia K. Pollard and John A. Pollard, Jr.
Elizabeth Popoff
Post and Courier Foundation
George J. Pothering
Whitney Powers
Helen Pruitt and A. Bert Pruitt, Jr.
Ann Looper Pryor 1983 and Gregory Pryor
Susan M. Psimer
Cathy H. Quashie and Colin Quashie
Kathleen Kennerty Rackley 1969 and
Charles Gary Rackley 1965
Suzanne Cuomo Raiford 1981 and Steve Raiford
Raven Cliff Company

Laura Hamilton Rawl 1969 and
A. Victor Rawl 1968
Rawle Murdy Associates, Inc.
Marygrace Redfern and James F. Redfern
Ronald Lee Reese
Regions Bank
Elizabeth Allen Rekito 1998 and Anthony Rekito
Joyce Dahlgren Remsburg 1956
and Clark L. Remsburg
Herbert Rephan 1959
Rebecca E. Reynolds 1987
Amy K. Rich and William N. Rich
Michele Siepert Richards 1996 and
Jonathan Morris Richards
Robben Richards
Nancy L. Rickson
Mary Aull Ridge 1949 and Harold
J. Ridge, Jr. 1949
Judy Rivkin and Maxcy C. Rivkin
Julie Spell Roberts 1984 and
Tobin J. Roberts 1982
Louester Smalls Robinson 1977
and Peter J. Robinson
Claire Z. Robinson and Klyde Robinson
Charlotte M. Roe and James G. Roe 1951
Anna Roche Rogers 1991 and
Robert B. Rogers, Jr.
Nadia P. Blanchat and Kent L. Rollins 1976
Robert Rone
Roper Saint Francis Healthcare
Brenda Rosen and Samuel Isaac Rosen
Maxine J. Rosenberg and Fred Rosenberg
Sandra Kahn Rosenblum 1980
Sheralyn Rosenblum and Arthur Rosenblum
LuAnn B. Rosenzweig and Steven Rosenzweig
Valerie Ross and Craig A. Ross 1999
Leila Davenport Ross 2000 and William Ross
Rudy T. Rothseiden 2003
Joseph W. Rubin
Martha Thomas Rudisill 1960
and Hillyer Rudisill III
Robert B. Rummerfield
Joyce Matthews Runion 1977
and William Runion
Hellene S. Runtagh
Kristi M. Ryba 1988 and Isaac Ryba
Lauren Howell Sack 2000 and
Thomas J. Sack 1999
Dorothy Sanders and Richard J. Sanders 1966
Betty Watkins Sandifer 1984 and
Paul A. Sandifer 1968
Swati D. Sarvate and Dinesh G. Sarvate

Robert J. Sauer 1977 and D. Oliver Bowman
Melissa Garrison Sauls 1990 and
Richard Keith Sauls 1990
Joanne Baylis Scanlon 1998 and Todd Scanlon
Mikell Scarborough
Jordy Christian Schaffner 2002
Chaya T. Schapiro and Paul L. Schapiro
Betty Jo Schleier and Dudley Schleier
Sarah Davis Schneider 1987 and
William R. Schneider
Nella Barkley Schools 1986 and
David R. Schools 1984
Darleene Campbell Scott 1979 and Bill Scott
Susan F. Schottland and Peter B. Schottland
Kelley M. Schwartz and Ronald H. Schwartz
Jerrye Scofield and Timothy Scofield
D.L. Scurry Foundation
Seabrook Island Natural History Group
Faye Seigel and Robert A. Seigel
Select Health of SC
Vickie Sessions 1998
Cynthia Heatley Seyle 1966 and
Gerald L. Seyle 1965
Scott Sanders Shanklin-Peterson
and Terry K. Peterson
Ann Stout Shealy 1978 and Dennis G. Shealy
Catherine F. Shroka
Reid Sigmon
Dana Simons and Sedgwick L. Simons 1977
Mildred Mack Sjoberg 1986
and William Sjoberg
Amy Skipper and Christopher A. Skipper 1993
The Sledge Foundation, Inc.
Ryan Holmes Small 2001 and Andrew Small
Lynn Ray Smalley 1973 and Earl Smalley, Jr.
Cherie Westendorff Smith 2003
and C. Ryan Smith 2002
Ashley Jones Smith 2000 and
Michael J. Smith 1999
Carleen L. Smith and Woodie R. Smith
Catherine P. Smith and Hilton C. Smith, Jr.
Kay H. Smith
Helen Torlay Smith 1974 and
Texas T. Smith 1974
Margaret M. Snyder and J. Fred Snyder
Cynthia Solomon and Kerry Solomon
Margaret Olivia Sowell 1980 and R. Paul Aftning
Jan Sowell and Thornwell F. Sowell
Gail A. Spahn and Ronald L. Spahn
Tom Sparkman
SpeedDee Oil Change & Tune-Up
Tracy Staker 2000

Brenda H. Stasiukaitis and Robert J. Stasiukaitis
Cheryl Steadman and Paul W. Steadman 1983
Alanna Arnetta Steaple 1989
Susan Steinberg and Bernard Steinberg
P. Brianne Steiner 2007
Brenda Missel Stevens 1967 and
William E. Stevens 1967
Robert J. Stine 1976
Erin Elizabeth Stokes 2004
Mary C. Stokes and Douglas W. Stokes, Jr. 1984
Tommy Stone
Annie Stone and Graham Stone
Yvonne M. Stoneburner and
Frank D. Stoneburner
Katina P. Strauch and Bruce Strauch
Louise Guenveur Streat
Daniel A. Streuber 1985
Elizabeth Ann Strickland 2000
Emily Bell Strickland 1980
Lois M. Sugarman 1982
The Estate of Margaret K. Sullivan
Debbie Surratt and Greg Surratt
Brandon James Sutherland 2008 and
Meghan L. Sutherland 2009
Frederick E. Swanson 1994
Patricia R. Sykes and Paul J. Sykes
Connie Wyrick and Charles L. Wyrick, Jr.
Joshua Hans von Szalatnay 1999
Judith Tarleton and Larry Tarleton
Lillian D. Tasker and Gary D. Tasker
Kristin Walker Tawes 1993 and
George Warren Tawes, Jr.
Denise M. Taylor and William F. Taylor 1973
Francine F. Taylor
Cheryl Taylor and Chuck Taylor
Debra Taylor and Daron Taylor
Peter Tecklenburg
Caroline W. Thibault and Albert A. Thibault
Henry Thomas
Frank V. Thompson 1992
Maurice Horne Thompson 1958
Thompson Turner Construction
Jane Lucas Thornhill 1946 and Van Noy Thornhill
Diana Thornley and George C. Thornley
Gretchen Geiger Thornsberry 1995
and Jeffry M. Thornsberry
Lillian D. Trettin and Carl C. Trettin
Trident United Way
Deborah C. Turkewitz and Robert M. Turkewitz
Janice Tyler and James Brian Tyler 1981
Ashley Heltemes Tylus 2005 and
David J. Tylus 2007

Nancy Guy Union 1981 and
Christopher N. Union 1980
Juanita Sims Vaughan 1980 and
Murle L. Vaughan, Jr.
Meredith Verrecchia and Paul V. Verrecchia
Sandra Vineyard and Philip P. Vineyard, Jr.
Gloria Vinson and Jack Vinson
Sandy Bryan Vitalis 1991 and Gregory L. Vitalis
Janis Vogelpohl and Theodore W. Vogelpohl
Andrea L. Volpe
Karen A. Vournakis and John N. Vournakis
Charles Foster Wade 1979
Mary Walker and Steve Walker
Sheri T. Warren and Michael D. Warren
Laura Ricciardelli-Watt and David R. Watt
Peggy Watt and George P. Watt, Jr.
Thomas Spencer Weber 2001
Bonnie Bailey Webster 1998
Amanda A Weingarten
Heidi S. Whaley and John S. Whaley, Jr. 1972
Sophia Waring White 1961 and Marvin H. White
Alys Anne Williams Wiedeke and Lynn Wiedeke
Wild Dunes Resort
Marlene F. Williamon and Charles Williamon
Toula Philipps Williams 1972
and Charles D. Williams
Victor K. Wilson
Paul Wojnowich
Matt D. Wolfe 1994
Vivi Wood and George Wood
Martha M. Woodruff and Frank
B. Woodruff 1970
Victoria Floyd Wooten 1970 and
Kenneth F. Wooten
Worthwhile
Willie Anne Wright
Yu Henry Xie
The Henry and Sylvia Yaschik Foundation, Inc.
Helen Yochum
Marcia Smoak Yochum 1996 and
Henry M. Yochum III 1994
Martin I. Yonas
Marty Young and Gregory Young
Suzanne Weaver Zimmer 1989
and Jeffrey Zimmer
Margaret Kreher and John Zurlo
Megan Zwerner and Peter Zwerner

* Deceased

GIFTS TO THE PARENTS' FUND SUPPORT THE COLLEGE'S COMMITMENT TO PERSONALIZED EDUCATION AND OUR SMALL STUDENT/FACULTY RATIO. THIS IS EXEMPLIFIED BY GOLDSMITH BONNER LEADER SCHOLARSHIP RECIPIENT PAUL BRADLEY 2012 AND RONEKA MATHENY, ASSISTANT PROFESSOR IN AFRICAN-AMERICAN STUDIES. "RONEKA HAS INFLUENCED ME TO BE CONFIDENT IN MY IDEAS AND KNOW THAT HARD WORK LEADS TO GREAT THINGS," SAYS BRADLEY.





**CISTERN
SOCIETY**



MANDY 1964 AND GEORGE GEILS
1963 WITH MARIE 1989 AND NICK
THOMPSON 1964 AT THE 2012
CISTERN SOCIETY LUNCHEON.



ELAINE FREEMAN AND
ANN CONNELLEE.

CISTERN SOCIETY

The Cistern has served as the heart of campus for generations. The Cistern Society honors those alumni and friends who preserve the College of Charleston for generations to come through a commitment in their will, charitable trust or other estate planning method. Cistern Society donors are honored annually at a luncheon for their legacy gifts.

Marlene Alfred Addlestone 1964
Lucy E. Albenesius and Edward L. Albenesius 1947
Philip Anderson 1981
Anonymous (2)
Betty Beatty and Guy E. Beatty
Charlotte L. Berry and Joe E. Berry, Jr.
Bess Brockington Bluestein 2002 and
Brett A. Bluestein 1997
Esther Boykin
Judith C. Brooks and W. Ely Brooks 1941
Charlene Bunch and E. Karl Bunch
Sally C. Christian and James D. Christian 1997
Janice Clark and Malcolm C. Clark
Claudia Cohen and David J. Cohen
Ann B. Connellee and William L. Connellee
Catherine Dalla Mura and Richard A. Dalla Mura
Sara Calhoun Davis and Chuck Davis, Jr.
Mignon DeBerry and Arthur S. DeBerry
Ann Edwards and James B. Edwards 1950
Debbie Engelman and Otis E. Engelman, Jr. 1969
Stanley B. Farbstein
Amy N. Farley 2007
Kathryn Smith Finger
Jeffrey A. Foster
Elaine T. Freeman
Sarah Lynn Gainey 1966
Mary Welsh Geils 1964 and George F. Geils, Sr. 1963
Richard Olin Gibson 1957
Alan B. Goer
Henrietta U. Golding 1974
Nancy Gorski and Paul T. Gorski
Samuel Greene*
Shannon Withrock Haddad 1978 and
Richard A. Haddad 1975
Ramona W. Hale
Tom E. Heeney
Joyce Duncan Hilton 1954 and
William D. Hilton, Sr. 1951
Ann Herchak Horner 1977 and Jim Horner
Ruth Hornik
Jane Blakely Jennings
Lotta K. Jett 1958 and Harriman H. Jett 1963
Mary Quinto Johnson 1994 and Ashley Johnson
Benjamin Joye 1975
Barbara Keil and Julian E. Keil
Lenora Kessler and Raymond A. Kessler, Jr.
Sharon Brock Kingman 1980 and Russell Kingman
Joanne Lannie and Vincent P. Lannie
Alice W. Latimer
Mary Eileen Leonard 1945
Nina P. Liu
Lyndelle A. Lovejoy and Howard R. Lovejoy

Michelle Y. Mangum 1986
Dorothy M. Marban
Wendy Marcus
Susan Clark Marlowe 1976 and Robert
William Marlowe 1971
Mindi Martin and John F. Martin 1982
David P. Masich
Anne Edmunds McMaster
Marianne Mead and David Mead, Jr.
Tony Meyer 1949
Sam R. Miglarese
Carol A. Mysel and Allan L. Mysel
Elizabeth Neboschick and Michael R. Neboschick 1966
Caroline E. Newman 1941
Melody Nuss* and Jerry J. Nuss 1990
Susan Pearlstine
Milward Deas Pinckney* 1951 and Lucian Pinckney
Cornelia D. Poulnot 1958
Ann Looper Pryor 1983 and Gregory Pryor
Anne Stender Puchhaber 1947 and
Bernard F. Puchhaber 1950
Louise S. Ratliff 1977 and William E. Ratliff
Gene Reed, Jr.
Emily H. Remington
John Minott Rivers, Jr.
Renee Buyck Romberger 1981 and Randy Romberger
Rose Condon Hamm Rowland 1972 and John Rowland
Dorothy Sanders and Richard J. Sanders 1966
Fabian X. Schupper
Ivan Morton Sherman 1974 and Mark Ledet
Kathryn N. Small
Catherine Small and Robert S. Small, Jr.
Sue A. Sommer-Kresse and John L. Kresse
Kate Stanton and David Stanton
Theodore S. Stern*
Brenda Missel Stevens 1967 and
William E. Stevens 1967
Louise Guenveur Streat
Kim Sturgeon and Thomas Vance Sturgeon 1981
William E. Tate 1966
Marie W. Thompson 1989 and C. O. Thompson III 1964
Anita Condon Van De Erve 1970
Lucia J. Vest 1947 and Edward N. Vest
Andrea L. Volpe
J. Stewart Walker
Sue Simons Wallace
Frances C. Welch
Libby Winthrop and John Winthrop
Margaret J. Winter* 1943
Lois Ann Wyly 1947
John A. Zeigler, Jr.
Anita Zucker

* Deceased



IN TRIBUTE

Thank you to our donors who made gifts to the College in 2012 in memory or in honor of the following special people who made a difference in their lives and in the life of the community. We work diligently to make the list of tribute gifts as complete and accurate as possible. If we have overlooked anyone or if there is an error, please allow us to correct our records by contacting Carin Jorgensen at 843.953.5859 or jorgensencl@cofc.edu.

GIFTS RECEIVED IN MEMORY (HONORED INDIVIDUAL IN BOLD)

- Lt. Col. John Amaker**
Ms. Karen Jones
- Ms. Harriet Anastopoulo**
Mr. Akim A. Anastopoulo and Professor
Constance Anastopoulo
- Mr. Timothy Asnip 1994**
Mr. and Mrs. Robert Ream
- Ms. Rhoda Daub Baker**
Ms. Karen Jones
Mr. Tony Meyer
- Mr. Thompson Parker Barnwell**
Mr. and Mrs. Jack M. Alterman
Praxis Balanced Body Studio
Ms. Sarah VanWye
- Dr. George W. Bates, Jr. 1941**
Mr. and Mrs. William Craver, Jr.
- Mr. John J. Bean 1950**
Mr. Tony Meyer
- Ms. Marjorie M. Benich**
Mr. and Mrs. A. L. Lofton, Jr.
- Mr. John Conroy Bennett**
Ms. Karen Jones
Mr. Tony Meyer
- Dr. Dan Billen**
Dr. and Mrs. Martin Perlmutter
- Mrs. Ora H. Breeden 1942**
Mr. James C. Kelly
- Mr. John Franklin Bowling**
Ms. Karen Jones
Mr. Tony Meyer
- Ms. Betty L. Blackmon**
Ms. Karen Jones
- Ms. Nancy E. Brown 1999**
Mr. and Mrs. Charles L. Brown
- Ms. Jan Holly Callaway**
Mrs. Janice Peyton Davidson
- Ms. Helen Carter**
Ms. Karen Jones
Ms. Martha K. McConnell
- Mr. William D. Chamberlain 1975**
Mr. and Mrs. Charles E. Harvey
Ms. Karen Jones
Mr. Tony Meyer
Mr. and Mrs. Charles A. Weinheimer, Jr.
- Ms. Florence Chapman 1939**
Ms. Karen Jones
Mr. Tony Meyer
- Mr. Matthew Scott Ciganovic**
Mrs. Alice H. Brewer
Mr. and Mrs. Robert A. Buchko
Mr. and Mrs. Edward L. Mell
- Ms. Joan P. Clarey**
Mr. Tony Meyer
- Mr. Chevis Clark, Sr.**
Ms. Karen Jones
- Mr. Joseph Wardell Clark, Jr.**
Ms. Karen Jones
- Ms. Joanne Marie Comar 1956**
Mr. and Mrs. Nathaniel E. Barnwell
Mr. and Mrs. L. Wilbur Evans
- Mr. Edwin Bazil Commins, Sr.**
Mr. Tony Meyer
- Ms. Sandra Smith Craver**
Ms. Karen Jones
Mr. Tony Meyer
- Ms. Kathleen Daughtry**
Ms. Karen Jones
- Mr. Johnny Diamond**
Ms. Hollis Rae Gerth
- Mrs. Mary J. Drayton 1941**
Mr. Charles H. Drayton
- Mr. James Harold Easterby, Jr. 1949**
Mr. and Mrs. Joe G. Burns, Jr.
Mr. and Mrs. Daryl G. Byrd
Mr. and Mrs. D. J. Gibbons, Jr.
Mr. Joseph Horne
Ms. Vickie P. Hose
Mr. and Mrs. Charles H. McDonald
Dr. and Mrs. Earl B. McFadden
Mr. Tony Meyer
Mrs. Helen S. Mills
Ms. Mary A. Phillips
Shandon United Methodist Church
Mr. and Mrs. Grady S. Smith
Mr. and Mr. Richard B. Werts
Mr. and Mrs. Thomas H. White
Mr. and Mrs. Robert E. Williams, Jr.
- Mrs. Katherine Wilkinson Elliott**
Mr. and Mrs. Sebastian Arnold
Mr. and Mrs. Thomas G. Bodie
Mr. J. M. Carstarphen
Mr. Wilson Dunn
Mrs. Peggy H. Grissom
Mr. and Mrs. James J. Jakubecy
Mr. and Mrs. Donald R. Lineberger
Mr. and Mrs. Graham C. Mullen
Mr. and Mrs. Ron Nesheim
Ms. Maggie Will

Ms. Thelma Stent Fielding

Mr. John M. Rivers, Jr.

Dr. Harry W. Freeman 1943

Mr. and Mrs. Andrew L. Abrams

Mr. and Mrs. James P. Anderson

Mr. and Mrs. Lloyd Ash, Jr.

Mr. Frank Boensch

Mr. and Mrs. John S. Bowling

Dr. Margaret E. Bridges

Dr. Mark Crabbe and Dr. Linda Crabbe

Mrs. Colleen Dargan

Mr. Perrin Q. Dargan III

Dr. and Mrs. James K. Dias

Dr. Kenneth Dodds and Dr. Helen Dodds

Mr. and Mrs. John E. Dwyer

Dr. and Mrs. David D. Egleston

Mr. and Mrs. Charles J. Everett

Mrs. Patricia Featherstone

Mr. John Q. Florence

Mr. and Mrs. Terry Florence

Mrs. Frances R. Frampton

Ms. Dorothy Freeman

Mr. and Mrs. Harry W. Freeman, Jr.

Dr. and Mrs. George F. Geils, Sr.

Ms. Jan M. Goin

Dr. and Mrs. Charles F. Greer

Mrs. Margaret N. Harrison

Mr. and Mrs. Charles E. Harvey

Dr. and Mrs. L. Thomas Holst, Jr.

Mr. William Barnwell Holt

Mr. and Mrs. David H. Jaffee

Mr. and Mrs. Darryl G. Johnson

Ms. Karen Jones

Mr. and Mrs. Constan G. Kanellos

Mrs. Eleanor Kline

Ms. Rebecca L. Lockhart

Mr. and Mrs. Robert E. Lyon

Dr. Benjamin K. McInnes III

Mr. and Mrs. Edwin Whitfield McMillan

Mr. Tony Meyer

Mr. and Mrs. David E. Miller II

Mr. Charles Montgomery

Dr. Susan J. Morrison

Mr. and Mrs. Dewey B. Nettles

Mr. and Mrs. Jerry J. Nuss

Ocean, Inc.

Palmetto Primary Care Physicians, LLC.

Mr. David Rembert, Jr.

Mr. John M. Rivers, Jr.

Mr. and Mrs. Jake C. Rowell

Mr. and Mrs. Dowse Bradwell Rustin III

Mr. and Mrs. Peter G. Siachos

Mr. and Mrs. Bruce W. Stender

Dr. Henry W. Strobel

Mr. James D. Synder

Mr. and Mrs. J. P. Taylor

Ms. Alexandra F. Thacker

Ms. Helen Tisdale

Mr. and Mrs. Charles S. Way, Jr.

Mr. and Mrs. Joseph D. Whitaker

Mr. and Mrs. George W. Williams

Dr. Richard H. Gadsden, Sr. 1950

Ms. Emily E. Brown

Mr. Thomas Anthony Garrett, Jr.

Ms. Karen Jones

Ms. Joyce Condon Gertis

Ms. Karen Jones

Mr. Clarence Gramling

Ms. Karen Jones

Mr. William Henry Grayson

Ms. Vickie Sessions

Ms. Laura S. Griffin

Ms. Jill C. Robins

Mr. Perry Hamilton

Dr. Gary W. Thomas

Mr. Arthur L. Haisten 1943

Ms. Karen Jones

Mr. Tony Meyer

Mrs. Charlotte Hastie

Mr. John A. Zeigler, Jr.

Mr. Robert C. Heffron, Jr. 1967

Independent Insurance Agents

of S.C. Foundation

Ms. Lucia Fishburne Cogswell Heins 1943

Ms. Karen Jones

Mr. Cooper Hightower

Ms. Karen Jones

Mr. William "Bubba" C. Hightower, Sr.

Mr. and Mrs. Charles E. Harvey

Mr. William Barnwell Holt

Ms. Karen Jones

Ms. Mary Boyd Hines

Mr. and Mrs. Marion C. Berg

Mr. R. Denniston

Dr. and Mrs. Colin D. Jones

Mr. and Mrs. Wingate G. Joyner, Jr.

Mr. and Mrs. Edward B. McDonough, Jr.

Mr. Robert H. Meaheer

Ms. Margaret Murray

Dr. and Mrs. Charles J. Sawyer III

Mr. and Mrs. Doug Smyly

Mr. and Mrs. Steven D. Smyly

Mr. and Mrs. Morgan Tackett

Mr. and Mrs. Hamp Uzelle

Dr. Rita Liddy Hollings 1957

Ms. Margaret L. Ehrhardt

Mr. John M. Rivers, Jr.

Mr. and Mrs. L. Wilbur Evans

Mr. and Mrs. Charles E. Harvey

Ms. Karen Jones

Mr. Tony Meyer

Dr. Roy A. Howell, Jr. 1946

Mr. and Mrs. L. Wilbur Evans

Mr. and Mrs. Charles E. Harvey

Mr. Tony Meyer

Ms. Jane Satterfield Howie

Ms. Karen Jones

Dr. Robin T. Hungerford

Ms. Karen Jones

Ms. Paige Whitney Imperatore

Mr. and Mrs. Harold J. Imperatore

The Honorable George W. Jefferson 1957

Mr. Vivian M. Jefferson

Mr. Tony Meyer

Mr. F. Mitchell Johnson, Sr. 1937

Ms. Margaret J. Davis

Mr. Walter Kane

Mrs. Anita Zucker

Dr. Stanley H. Karesch

Ms. Deura Altman

Ms. Pamela Auerbach

Mr. and Mrs. Sam H. Banov

Mr. and Mrs. Neal D. Borden

Dr. and Mrs. Howard L. Brilliant

Ms. Lois Conway

Mr. and Mrs. James M. Dubin

Dr. and Mrs. Ronald S. Gibbs

Professor Marsha E. Hass

Jewish Federation of Greater Atlanta

Mr. and Mrs. Barry Krell

Mr. and Mrs. Arthur J. Kurtz

Mr. and Mrs. Peter Machinist

Dr. and Mrs. Martin Perlmutter

Mr. and Mrs. Arnold Prystowsky

Mrs. Sydney Richman

Ms. Gertrude Solomon

Dr. and Mrs. Kerry Solomon

Mr. and Mrs. Ronald L. Spahn

Ms. Dottie Tanenbaum

Mr. Mark C. Tanenbaum

The Country Club of Charleston

Dr. Charles William Kisabeth

Mr. and Mrs. John S. Bowling

Mr. and Mrs. L. Wilbur Evans

Mr. William Barnwell Holt

Ms. Karen Jones



Ms. Emily Elizabeth Kocher 2009

Mr. and Mrs. Mark J. Kocher

Ms. Evelyn P. Kukolla

Mr. and Mrs. Morgan Tackett

Ms. Stamie T. Kypreos

Dr. Constantine Hassapoyannes

Ms. Patricia LeBlanc

Ms. Karen Jones

Ms. Nathaline Lobo

Mr. David H. Lobo

Mr. Robert McDowell

Mr. Tony Meyer

Ms. Twitty H. Meyer 1965

Ms. Ruth Anderson

Mr. and Mrs. John S. Bowling

Dr. Margaret E. Bridges

Dr. Kenneth Dodds and Dr. Helen Dodds

Mr. and Mrs. Charles E. Harvey

Mr. William Barnwell Holt

Ms. Karen Jones

Mr. Tony Meyer

Mr. and Mrs. Dewey B. Nettles

Ms. Edith Jeanne Miler

Mr. and Mrs. L. Wilbur Evans

Mr. William Barnwell Holt

Ms. Karen Jones

Mr. Tony Meyer

Miss Gibbon S. Miler

Ms. Vickie Sessions

Ms. Denise S. Molix

Ms. Vickie Sessions

Mr. David A. Molony

Mr. Tony Meyer

Ms. Anna Elizabeth Moore 1999

Ms. Megan Kerley

Dr. William V. Moore

Mr. Mark S. Moore

Ms. Mary Katherine Zorn

Mr. Thomas Miles Newbern 2012

Ms. Hannah A. Ashe

Ms. Briley Hedrick

Mr. and Mrs. Wingate G. Joyner, Jr.

Mr. and Mrs. Joseph R. Magee

Ms. Gladys Mason

Mr. and Mrs. Chip Mikell

The Honorable and Mrs. Thomas Newbern

Ms. Lisa B. Niblock

Ms. Bonnie C. Revelle

Mr. and Mrs. Morgan Tackett

Mr. and Mrs. J. K. Vaughan

Ms. Patsy W. Norton

Mr. and Mrs. Robert L. Abraham

Mr. and Mrs. Gus H. Small

Mr. Thomas A. Palmer

Mr. and Mrs. David Lawrence

Ms. Elizabeth M. Pettit

Mr. and Mrs. John S. Bowling

Ms. Marie P. Pinto

Mr. Tony Meyer

Mr. Woody Pittman

The Honorable and Mrs. Thomas Newbern

Mr. Spencer G. Pitts 2012

Ms. Chloe Vespia Kingery

Ms. Adrienne B. Reilly

Mr. and Mrs. John Winthrop

Mr. Matthew C. Renken

Mr. Tony Meyer



Mr. Joshua Dylan Rosen

Dr. and Mrs. Charles Banov

Mr. Morris D. Rosen 1942

Ms. Elza M. Alterman
Andrews Mediation & Law Firm, P.A.
AWR & Associates

Mr. and Mrs. Robert C. Bailey
Mr. and Mrs. Norman Berlinsky

Mr. and Mrs. Gordon Bielanski
Dr. and Mrs. Howard L. Brilliant

Mr. Thos Heyward Carter, Jr.
Ms. Margaret L. Ehrhardt

Mr. William E. Craver III
Croghan's Jewel Box

Dixon Hughes Goodman LLP
Elliott Davis, LLC

Mr. and Mrs. L. Wilbur Evans
Mrs. Renee Frisch

Mr. W. Foster Gaillard, Esq.
Mr. and Mrs. James B. Gatch

Mr. and Mrs. Robert Graves
Mr. and Mrs. Charles E. Harvey

Mr. and Mrs. David M. Hay
Jewish Federation of Greater Atlanta

Mr. Allen H. Johnson
Ms. Karen Jones

Mr. and Mrs. Hugh C. Lane, Jr.
Ms. Alice F. Levkoff

Mrs. Gladys Mappus
McGuire & Company, LLC

Mr. Mark W. McKnight
Mr. Tony Meyer

Mr. and Mrs. A. E. Morehead III
Mrs. A. A. Munn

Dr. and Mrs. Martin Perlmutter

Mr. and Mrs. Arnold Prystowski

Mr. Gene Reed, Jr.

Mr. John M. Rivers, Jr.

Mr. Bill Roberts

Mr. and Mrs. William Scheer

Mr. Joel H. Smith and Ms. Pamela J. Roberts

Mr. G. Harris Thaxton

Mr. and Mrs. William M. Tunno

Dr. Nathaniel Wallace and Ms. Janet Kozachek

Mr. and Mrs. Randolph Walker

Mr. and Mrs. L. Mark Wine

Mr. and Mrs. Stanley Wright

Mrs. Kate Wyllly

Mrs. Anita Zucker

Mr. and Mrs. Lenny Zucker

Mr. James Rourk, Jr.

Mr. John M. Rivers, Jr.

Mr. John K. Rutenberg

Ms. Karen Jones

Ms. Emily J. Salisbury 2008

Mr. and Mrs. Howard G. Salisbury, Jr.

Dr. Norton M. Seltzer

Mr. and Mrs. Michael Abrahamson

Ms. Paula Z. Batnick

Mr. and Mrs. Marc Bazilian

Mr. and Mrs. Claudio Benadiva

Dr. and Mrs. Solomon M. Bierman

Mr. and Mrs. Don Birnbaum

Mr. and Mrs. Michael N. Cohen

Mr. and Mrs. Henry Cohn

Ms. Deborah Faecher

Mr. Marc Faecher

Mr. and Mrs. Gerald A. Feinberg

Fine Craft Shows Charleston, Inc.

Ms. Hilary Freedman

Glaucoma Consultants & Center

For Eye Research, PA

Mr. Michael W. Haga

Mr. and Mrs. Ira Henowitz

Dr. and Mrs. Edward H. Karl

Mr. and Mrs. David Klau

Mr. and Mrs. Martin R. Libbin

Mr. and Mrs. Mitchell S. Marcus

Mrs. Shea E. Melnick

Mr. and Mrs. Frank S. Nesi

Mr. and Mrs. Saul M. Pasternack

Mr. and Mrs. Gerlad E. Quirk

Dr. and Mrs. Dean Schuyler

Mr. and Mrs. Robert J. Seltzer

Rabbi and Mrs. Charles S. Sherman

Mr. and Mrs. Scott Shoham

Mr. William Sloat

Mr. and Mrs. Michael J. Smith

Mr. and Mrs. William R. Taylor

Mr. Stephen Getty and Ms. Susan Taylor

Mr. and Mrs. Michael J. Wagner

Ms. Jill Wollins

Ms. Nelle T. Woodruff

Mrs. Jean Seyle

Ms. Karen Jones

Dr. David Shames

Ms. Marcia J. Miller

Ms. Jean S. Sharp

The Honorable and Mrs. Thomas Newbern

Ms. Minnie Ruth Sherman

Dr. Ivan M. Sherman and Mr. Mark Ledet

Mr. Julian Mitchell Simons, Jr.

Mr. and Mrs. Nathaniel E. Barnwell

Ms. Sallie E. Simons

Ms. Adele C. S. Daniels

Ms. Nancy C. Smythe 1989

Mr. John M. Rivers, Jr.

Mr. Gilbert Snyder

Ms. Marcia J. Miller

Mr. and Mrs. Marvin I. Oberman

Mr. Gordon B. Stine 1944

Mr. and Mrs. William Craver, Jr.

Mr. and Mrs. L. Wilbur Evans

Mr. and Mrs. Charles E. Harvey

Ms. Karen Jones

Mr. Tony Meyer

Ms. Adela Holmes Stoney

Ms. Karen Jones

Mr. Tony Meyer

Mr. Marc Sunshine 1996

Ms. Karen Jones

Mr. Ned Tackett

The Honorable and Mrs. Thomas Newbern

Dr. George Reginald Tawes 1965

Mr. and Mrs. Dewey B. Nettles

Mr. John B. Thomas, Sr. 1953

Dr. Gary W. Thomas

Mr. William W. Thomas 1945

Dr. Gary W. Thomas

Vasiliki "Bessie" Korbos Trapalis

Ms. Karen Jones

Annis Hope Turner

Ms. Karen Jones

Mr. Michael R. Tyzack

Mr. Christopher W. Groner and

Ms. Deborah Barr Carson

Mr. Tomy Umphlett

The Honorable and Mrs. Thomas Newbern

Mr. Jack Vane

Mr. and Mrs. Nathaniel E. Barnwell

Ms. Sharon Walsh

Mr. Benjamin Michael Walsh

Ms. Judy Payne Watts

Ms. Shelby Nicole Cody

Mr. Christopher G. Wells

Student Government Association

Mr. Clarence Gantt Westendorff, Jr. 1951

Ms. Karen Jones

Mr. Tony Meyer

Mr. Lee Cracraft Williams

Mr. William Barnwell Holt

Ms. Karen Jones

Ms. Vickie Sessions

Mr. Manning B. Williams, Jr. 1963

Mr. and Mrs. L. Wilbur Evans

Mr. Tony Meyer

Mr. and Mrs. Allison F. P. Wilder, Jr.

Mr. James Wilson

Dr. Gary W. Thomas

Ms. Margaret Jennings Winter 1943

Ms. Karen Jones

Ms. Elizabeth J. Young 1939

Mr. and Mrs. John S. Bowling

Croghan's Jewel Box

Mr. and Mrs. L. Wilbur Evans

Mr. and Mrs. Charles E. Harvey

Mr. and Mrs. David M. Hay

Ms. Karen Jones

Mr. Tony Meyer

Mr. William Zeigler

Mr. John A. Zeigler, Jr.

Dr. John W. Zemp 1953

Mr. John W. Zemp, Jr.

**GIFTS RECEIVED
IN HONOR
(HONORED INDIVIDUAL IN BOLD)**

Ms. Erica Cari Arbetter 2014

Mr. and Mrs. Jay Arbetter

Mr. William Asbill

Mr. and Mrs. Daniel F. Attridge

Mr. Joel D. Bailey 2005

Dr. and Mrs. John C. Bailey

Mr. Charles J. Baker III 1980 and Mrs.

Elizabeth Bramlett Baker 1981

Mrs. Frances Weston Bramlett

and Mr. Russell Wallace

Mrs. April L. Borkman 2000

Mr. and Mrs. Raymond F. Borkman II

Mr. Larry Bradham

Mr. and Mrs. Leslie William Bright

Mrs. Erica Henderson Brown 1993

Mr. and Mrs. J. Stephen Henderson

Mr. Marc Chardon

Blackbaud

Dr. Bernard Chinnasami

Dr. Gary W. Thomas

Mr. Denny D. Ciganovic

Mr. and Mrs. John B. Hanawalt

Mr. Thomas B. Clark

The Honorable and Mrs. Thomas Newbern

Mr. Colin Knight Colbert 2010

Mr. and Mrs. Timothy J. Colbert

Mr. Jeffrey Cusher

Mr. and Mrs. William Jason Davey

Ms. Elizabeth M. Davis 2003

Mr. and Mrs. Charles M. Davis, Jr.

Network For Good

Ms. Lisa Ann Dealmeida 2015

Mr. and Mrs. Robert DeAlmeida

Ms. Bonnie Devet

Ms. Stephanie Taylor Sacchetta

Ms. Katharine Dickey

Mr. William Y. Dickey

Ms. Louise Dorire

Ms. Brooke A. Shepard

Ms. Shannon Dunn 2013

Miss Amanda Joyce Sibai

Mr. Samuel Ehrlich

Mr. and Mrs. Jeffrey M. Zucker

Mrs. Deda Evans

The Honorable and Mrs. Thomas Newbern

Mrs. Yvonne duFort Evans 1958

Dr. Jeffrey A. Foster

Dr. Dennis A. Feinberg

Mr. and Mrs. Jeffrey M. Zucker

Ms. Jill Feroldi 2013

Miss Olivia Leigh Rothschild

Ms. Emily Marie Ferrara

Mr. and Mrs. Robert L. Dawson

Hope 1970 and Terry Florence 1971*

Mr. and Mrs. Peter G. Siachos

Dr. Jeffrey A. Foster

Ms. Myrtle A. Staples

Mr. Teak Fox

Mr. Thomas L. Fox

Dr. Harvey Friedman

Mr. and Mrs. Jeffrey M. Zucker

Ms. Leslie Frondorf 2008

Mr. and Mrs. John Frondorf

Ms. Claire Fund

Mr. and Mrs. Edward Kronsberg

Ms. Jess Glasser

Mr. Peter Rosenthal

Ms. Claudia Griffin

The Honorable and Mrs. Thomas Newbern

Dr. Perry Halushka

Mr. and Mrs. Jeffrey M. Zucker

Mrs. Mariana R. Hay 1982

Mr. and Mrs. Van Noy Thornhill

Ms. Katherine Anne Heath 2008

Mr. and Mrs. David M. Hay

Mr. Philip Justin Hendrix 2012

Mr. Ed Hendrix

Mr. and Mrs. James T. Hines III

The Honorable and Mrs. Thomas Newbern

Mr. James T. Hines, Jr.

The Honorable and Mrs. Thomas Newbern

Ms. Melanie A. Holland 2012

Mrs. Margaret Holland

Mr. John Huddleston

Ms. Brooke A. Shepard

Mr. and Mrs. Jamie Johnson

The Honorable and Mrs. Thomas Newbern

Mr. and Mrs. Don Joyner

The Honorable and Mrs. Thomas Newbern

Mr. and Mrs. Wingate Gordon Joyner, Jr.

The Honorable and Mrs. Thomas Newbern

Ms. Kaye Koonce

Mr. and Mrs. James R. Koonce

Ms. Rebecca F. Krell 2013

Mr. and Mrs. Edward Krell

Mr. James A. Kuhlman

Ms. Ann Braden Kuhlman

Mrs. Catherine A. Lacour 1995

Blackbaud

Ms. Brianna Leask

Mr. and Mrs. Herman E. Smith III

Mrs. Trish Richardson

Ms. Mimi Lewis

Mr. Peter Rosenthal

Ms. Sarah Giffen Mancino 2003

Mr. and Mrs. Terry Giffen

Mrs. Janet F. Masonberg 1981

Mr. and Mrs. Jeffrey M. Zucker

Mrs. Laurel Callow Mastin 2003

Mr. John Callow

Ms. Anayis Sara Melikian 2014

Mr. Robert A. Melikian and Ms. Susan Hohnsbeen

Mrs. Beth Pierce Meredith 1997

The Junior League of Charleston

Dr. Carrie Messal

Mr. William Morris Munce

Mr. and Mrs. Chip Mikell

The Honorable and Mrs. Thomas Newbern

Mr. D. Sherwood Miler III 1974

Miss Gibbon S. Miler

Dr. Deborah A. Miller

Ms. Elizabeth A. Abraham

Dr. Linda H. Fitzharris

Ms. Caryn Jarocki

Dr. and Mrs. Charles F. Kaiser

Mrs. Loretta McNulty

Mr. and Mrs. Eugene Melone

Mr. and Mrs. Salvatore Occhipinti

Mr. and Mrs. Steve Raiford

The Honorable and Mrs.

Leonidas E. Stavrinakis

Mr. Craig Tangeman and Dr. Cayce Tangeman

Dr. Linda M. Tangeman

Mrs. Ellen Frisch Mintz 1991

Mr. and Mrs. Jeffrey M. Zucker

Ms. Gabrielle N. Moon 2015

Mr. and Mrs. Bret R. Vitello

Dean Valerie B. Morris

Mr. and Ms. F. Christopher Handal

Mr. Scott Murray

The Honorable and Mrs. Thomas Newbern

Ms. Evelyn H. Nadel

The Honorable and Mrs. Thomas Newbern

Mr. Judson Newbern

The Honorable and Mrs. Thomas Newbern

Mrs. Margaret Newbern

Mr. and Mrs. James T. Hines III

Mr. James Newsome III

Charleston Branch Harbor Pilots

Mr. Jerry J. Nuss 1990

Mr. and Mrs. William Werrell

Mr. Kevin Ortega

Ms. Michelle S. Ortega

Mr. Cameron T. Oswald 2012

The Honorable and Mrs. Thomas Newbern

Ms. Rainey Elizabeth Patterson 2011

Mr. Austin Tres Garland

Dr. Martin Perlmutter

Lt. Col. and Mrs. Les Bergen

Mr. Stephen Rockower and Mrs. Ann Sablosky

Mrs. Bonnie duFort Perry 1965

Dr. Jeffrey A. Foster

Mrs. Bridget Bettelli Price 2003

Mr. Luke A. Bergamini

Mrs. Robben Richards

Mr. and Mrs. Richard McCall

Mr. John Minott Rivers, Jr.

Mrs. Elizabeth R. Lewine

Ms. Brianna L. Rizzo and the Class of 2013

Mr. Frank Rizzo, Sr.

Mr. Timothy James Robinson

Mr. Peter J. Robinson and Dr.

Louester Smalls Robinson

Ms. Maria Cristina Ryan 2016

Mrs. Crista Ryan

Mr. Bynum Satterwhite

The Honorable and Mrs. Thomas Newbern

Ms. Celeste C. Seymore 2013

Dr. Russell Jeffrey Seymore and Dr.

Cathy Hawkins Seymore

Mr. John Sidden

Mrs. Randi Carlin

Dr. Sue A. Sommer-Kresse

Mr. and Mrs. Kenneth W. Bible

Ms. Vickie Sessions

Dr. Frances C. Welch

Mr. and Mrs. James L. Welch

Mr. Bernard Steinberg

Mr. and Mrs. Jeffrey M. Zucker

Dr. Theodore S. Stern's 100th Birthday

Mr. Lawrence Bursten and Mrs.

Marlene Addlestone

Mr. and Mrs. Jack M. Alterman

Mr. Ivan Anderson, Jr. and Dr. Renee Anderson

President and Mrs. George Benson

The City Marina Company

Coastal Community Foundation of S.C.

Dean and Mrs. David J. Cohen

The Oliver S. and Jennie R.

Donaldson Charitable Trust

Mr. John R. Feussner and Mrs.

Carol L. Blessing-Feussner

Mr. and Mrs. Frank M. Gadsden

Mr. and Mrs. Leo I. Higdon, Jr.

Dr. and Mrs. Charles F. Kaiser

Mr. and Mrs. Jeffery E. Kinard

Mr. and Mrs. J. Russell Kingman

Mrs. Elizabeth R. Lewine

Maverick Southern Kitchens, Inc.

Mr. and Mrs. Robert W. Marlowe

MUSC Foundation

Mr. and Mrs. Stephen C. Osborne

Mr. and Mrs. John E. Powell

Mr. Nigel A. Redden

The John. M. Rivers Foundation

Mr. and Mrs. Randy R. Romberger

The Honorable and Mrs.

Alexander M. Sanders, Jr.

Mrs. Rita L. Scott

Mr. and Mrs. Hilton C. Smith, Jr.

Mr. and Mrs. James A. Stern

Mr. and Mrs. Jonathan Stern

Mr. and Mrs. Robert L. Stiles

Ms. Marilyn Tonkon

Mr. and Mrs. George P. Watt, Jr.

Mr. and Mrs. Charles S. Way

The Honorable Lucille S. Whipper

The Jerry and Anita Zucker Family Foundation

Ms. Peggy Szteiter

Mr. and Mrs. Matt Garrett

Mr. and Mrs. Morgan Tackett

The Honorable and Mrs. Thomas Newbern

Ms. Emily Catherine Taylor 2014

Mrs. Lisa Taylor

Ms. Laura Ward 2008

Mr. Briton Barrett

Mrs. Lauren Weiner

Mr. and Mrs. Jeffrey M. Zucker

Ms. Anne M. Weisiger 2016

Mr. Edward I. Weisiger, Jr.

Dean Frances Welch

Mr. and Mrs. Troy V. Chapman

Ms. Miranda Louise Whiting 2015

Mr. and Mrs. William Whiting

Mr. Joshua Winn 2012

The Honorable and Mrs. Thomas Newbern

Mr. and Mrs. Jack Wynn

The Honorable and Mrs. Thomas Newbern

Mr. John A. Zeigler, Jr.'s 100th Birthday

Mr. and Mrs. Melvin H. Goodwin

Ms. Sarah C. Barney

Mrs. Charlotte S. Bavier

Mr. and Mrs. Norman Berlinsky

Dr. Robert J. Sauer and Dr. D. Oliver Bowman

Mrs. Mary G. Boyd

Dean and Mrs. David J. Cohen

Mrs. Leilani DeMuth

Mr. and Mrs. David R. Dodds

Mr. and Mrs. Patrick H. Eibel

Mr. and Mrs. L. Wilbur Evans

Mr. and Mrs. Leo Fishman

Mr. and Mrs. R. D. Gladden

Mr. and Mrs. Melvin H. Goodwin

Mr. Enrique G. Graf

Ms. Martha Greenway

Dr. William D. Gudger

Mrs. Marguerite V. Gussenhoven

Mr. Michael W. Haga

Mr. Stephen Hanson

Mr. and Mrs. Tapley O. Johnson, Jr.

Mrs. Karen B. Jones

Ms. Sara M. Karrer

Mrs. Elizabeth R. Lewine

Ms. Nina P. Liu

Ms. Katherine J. Lloyd

Ms. Elizabeth R. Manucy

Mr. David P. Masich

Mr. and Mrs. Michael Master

Ms. Joan C. Middleton

Mr. Dennis Miller

Mrs. Phyllis P. Miller

Dr. Paul T. Nelson

Mr. and Mrs. Michael D. Newman

Ms. Gayle N. Phillips

Mr. and Mrs. John R. Potter

Ms. Leah Y. Potter

Mr. and Mrs. Richard M. Potter

Dr. and Mrs. William Z. Potter

Dr. George B. Rabb

Mrs. Mary S. Rabb

Mr. Jonathan Ray and Mr. Harlan Greene

Reverend and Mrs. William P. Rhett, Jr.

Mr. and Mrs. Milton M. Rose

Mr. Steven E. Rosenberg

Mr. Robert B. Rummerfield

Dr. Robert J. Sauer and Dr. D. Oliver Bowman

Schwab Charitable Fund

Mr. Chee Hang See

Mr. and Mrs. George G. Spaulding

Mr. and Mrs. Pete Spell

Mr. David Hughes and Ms. Nancy Starnes

Mr. and Mrs. Charles Summerall

Mr. William H. Vandiver

Mrs. Patience D. Walker

Mr. Paul R. Weidner

Mr. and Mrs. Albert W. Weinrich

Mr. and Mrs. George W. Williams, Jr.

Mr. and Mrs. George W. Williams

Mr. and Mrs. Thomas E. Williams

Dr. Curtis Worthington III

Ms. Cathryn Zommer

Danu Collaborative

Mr. and Mrs. Matthew Zommer

Mrs. Anita Zucker

Academy of Economics and Finance

Ms. Karen H. Stark

Mr. and Mrs. Jeffrey M. Zucker

Mrs. Laura Zucker 2006

Mr. and Mrs. Jeffrey M. Zucker



PETER J. ROBINSON AND LOUESTER "LOU" SMALLS ROBINSON 1977 AT THE COFC NON-PROFIT BOARD OYSTER ROAST



CATHY MAHON 1980, CAROLYN AND NEIL DRAISIN 1965 ENJOY THE COFC NON-PROFIT BOARD OYSTER ROAST

2012 COLLEGE OF CHARLESTON BOARDS

The dedicated volunteers who serve on the boards and councils provide support in many ways, including the promotion of academic programs, research, faculty development and institutional governance.

Please note: The names that appear in these lists served their respective boards during all or part of 2012.

BOARD OF TRUSTEES

- | | | | |
|---------------------|-------------------------|-------------------------|-----------------------------|
| Donald H. Belk 2000 | L. Cherry Daniel 1975 | G. Lee Mikell 1984 | Toya D. Pound 1991 |
| J. Philip Bell | Frank M. Gadsden 1980 | Lawrence R. Miller | Daniel Ravenel 1972 |
| John H. Busch 1985 | James F. Hightower 1982 | Annaliza Oehmig | Jeffrey M. Schilz 2000 |
| Demetria Noisette | William D. Johnson | Moorhead 1992 | Joseph F. Thompson Jr. 1974 |
| Clemons 1975 | Marie M. Land | Gregory D. Padgett 1979 | John B. Wood Jr. 1983 |

COLLEGE OF CHARLESTON FOUNDATION BOARD

- | | | | |
|---------------------------|----------------------------|----------------------------|-----------------------|
| Renee Anderson | Dennis J. Encarnation 1974 | Stephen R. Kerrigan | R. Keith Sauls 1990 |
| Kevin Archer | Robert L. Freeman 1978 | Jeffery E. Kinard 1977 | Hilton C. Smith Jr. |
| William "Bill" S. Asbill | Margaret C. Frierson 1985 | Sharon B. Kingman 1980 | George G. Spaulding |
| Charles J. Baker III 1980 | Kenneth S. Gustafson 1975 | Edward E. Legasey | Sam Stafford III 1968 |
| W. Glen Brown Jr. 1976 | H. Thomas Hallberg | Arlinda F. Locklear 1973 | Steve D. Swanson 1989 |
| Marco L.E. Cavazzoni | Dorothy G. Harrison | Bradford Marshall | John H. Tiller 1984 |
| Dianne M. Culhane | David M. Hay 1981 | Ernest L. Masters Jr. 1972 | Sharon Toporek |
| Jackson L. Davis IV 1990 | Arthur. J. Heath | John E. Powell | Charles S. Way Jr. |
| Neil W. Draisin 1965 | Amy L. Heyel 1992 | Renee Buyck Romberger 1981 | Jeffrey M. Weingarten |
| Richard D. Elliott | Tapley O. Johnson Jr. | Hellene S. Runtagh | Tomi G. Youngblood |

ALUMNI ASSOCIATION BOARD

- | | | | |
|--------------------------------|--------------------------------|-----------------------------|-------------------------------|
| Mark O. Andrews 1976 | Albert E. Eads III 1982 | Margaret Boykin Mays 1988 | Jane Riley-Gambrell 1972 |
| Charles J. Baker III 1980 | Yvonne duFort Evans 1958 | Susan Burnett Mikell 1981 | D. Ellis Roberts 2001 |
| Johnnie W. Baxley III 1992 | Margaret Collins Frierson 1985 | D. Sherwood Miler III 1974 | Louester Smalls Robinson 1977 |
| Carl W. Blackstone 1993 | Jessica Gonzales Gibadlo 1997 | Nancy Limehouse Morrow 1973 | Carolyn Rogers 2012 |
| Brett A. Bluestein 1997 | Nicholas C. Glover 2005 | Elliott H. Phillips 1993 | Renee Buyck Romberger 1981 |
| Frances Weston Bramlett 1977 | Theodore V. Howie Jr. 1983 | Jermel L. President 2003 | Christopher A. Skipper 1993 |
| Elizabeth Middleton Burke 1994 | Karen Burroughs Jones 1974 | Jennifer Asnip | Christopher W. Starr 1983 |
| Tania V. Charles 2007 | Christina Callison | Quattlebaum 1996 | Angel Brown Touwsma 1993 |
| Whitney Hinds Coble 2008 | Kubinska 2007 | C. Andrew Rankin 1993 | Ann Ward Treat 2004 |
| Hartley Watson Cooper 1994 | Henry C. Leventis 1997 | Daniel Ravenel 1972 | Mallen Urso 2013 |
| Michelle A. Cooper 1995 | Robert F. Marion 1987 | Michael R. Renault 1995 | Cheryll Woods-Flowers 1981 |
| Bobby R. Creech Jr. 1986 | Robert W. Marlowe 1971 | Jacqueline Flemons | |
| Neil W. Draisin 1965 | Michael W. Massey Jr. 1987 | Richardson 2006 | |

COUGAR CLUB BOARD

- | | | | |
|--------------------------|-------------------------|--------------------------|----------------------------|
| James P. Anderson 1955 | Jeremy Glendenning 1996 | Ralph Martino | Winn Query 1977 |
| Josh Atkinson 2006 | Nancy Hahn | Marsha Miller | Jim Redfern |
| Remley Campbell 1971 | H. Thomas Hallberg | Valerie B. Morris | Kevin Smith 1992 |
| Bobby R. Creech Jr. 1986 | Jean Johnson | Richard Morse | Cheryll Woods-Flowers 1981 |
| David Crowley 2002 | David Katz | Marc New 1984 | Greg Young |
| Daniel Dickerson 1999 | Danny Kendall 1998 | H. Biemann Othersen 1950 | Tomi G. Youngblood |
| Catherine Dority 1999 | JJ Lamberson 1993 | Megan Owen | |
| Chris Fraser | Frances Lofton 1979 | John E. Powell | |



CONTACT US

The College's Division of Institutional Advancement has worked diligently to make this list complete and accurate. If we have overlooked anyone or if there is an error, please allow us to correct our records. Call or email Carin Jorgensen at 843.953.5859 or jorgensencl@cofc.edu.

DIVISION OF INSTITUTIONAL ADVANCEMENT

George P. Watt Jr.

Executive Vice President
843.953.4367
wattgp@cofc.edu

FINANCE

K. Tracey Bible 1994

Director of Financial Services
843.953.7458
biblek@cofc.edu

DEVELOPMENT

Chris Tobin

Vice President of Development
843.953.3694
tobinc@cofc.edu

Cathy Mahon 1980

Associate Vice President
843.953.5432
mahonc@cofc.edu

Marijana R. Boone 2001

Director of Advancement Services
843.953.5647
boonemr@cofc.edu

Denise Ciccarelli

Director of Corporate and
Foundation Relations
843.953.5018
ciccarellimd@cofc.edu

Carin Jorgensen

Director of Stewardship and
Donor Relations
843.953.5859
jorgensencl@cofc.edu

David Masich

Director of Gift Planning
843.953.1835
masichd@cofc.edu

Laurie Soenen

Director of Annual Giving
Programs
843.953.3418
soenenl@cofc.edu

ATHLETICS

Steve Stroud

Associate Director of Athletics
for External Affairs
843.953.5498
stroudsa@cofc.edu

ALUMNI RELATIONS

Jack Huguley 1972

Director of Alumni Relations
843.953.2060
huguleyj@cofc.edu

Karen Jones 1974

Executive Secretary
College of Charleston Alumni
Association
843.953.5773
jonesk@cofc.edu

COMMUNICATIONS

Jennifer Lorenz

Director of Advancement
Communications
843.953.5126
lorenzjl@cofc.edu



| giving.cofc.edu |