

Acer Projector Gateway

Introduction

The Acer Projector Gateway (APG) is a smart, integrated system that enhances presentations via your Acer projector. The APG provides versatile source connectivity, the latest eDisplayPro Management tools for networking display, supports for media contents playback via the built-in decoder and more.

Networking APG features

- With high-performance wireless projection via an acer USB WiFi adapter or an RJ-45 port for wired connections (only for the models with RJ-45 port).
- The projector can act as an access point (AP) or work in WiFi con-current mode when doing networking display.
- Users can easily launch the Acer eDisplayPro Management to do Full screen, L/R, 4-split screen projection and enable high quality video streaming.
- Powerful wireless display features ready for devices with different OS (MS Windows, Mac OS, Android, iOS)
- Supports wireless network security (WPA-PSK, WPA2-PSK).
- Supports firmware upgrade via USB flash drive.

Multi-media features

- Fancy and stylish user interface for better experience.
- You can enjoy media & documents playback via internal memory, USB flash drive and SD card (for selected models).
- Supports high resolution JPEG and BMP picture formats.
- Supports MP3, PCM and WMA...audio formats, music spectrum and random play function for your pleasing.
- Supports MPEG4, H.264, WMV and MKV...video formats and smooth video playback with 1080p@30Hz.
- Easy control for all media functions by the remote control.

Media Gallery

This mode allows you to browse media files stored in different devices, such as internal memory, USB flash drive, USB hard drive and SD card when connected to the projector.



NOTE: Supported capacity for USB flash drive: up to USB 3.0 64GB, for USB hard drive: up to 1TB.



NOTE: Supported capacity for SD/SDHC/MicroSD: up to 64GB Class 2-10.

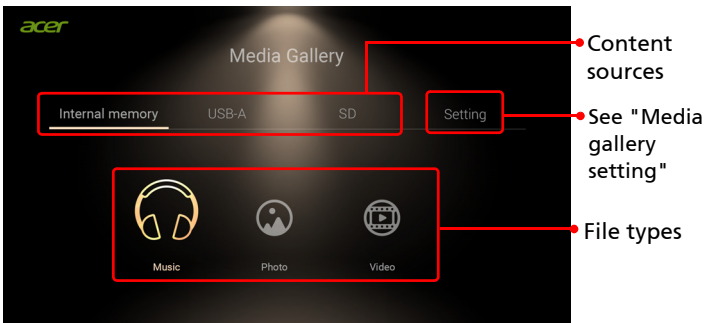


NOTE: Some external USB hard drives may not be supported due to lack of USB power.



NOTE: Disks with partitions are not supported.

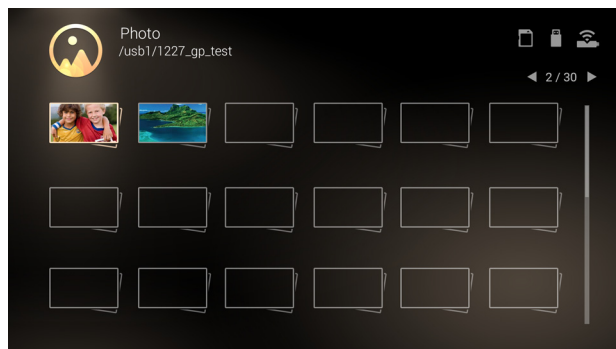
Basic media gallery operations



- 1 Use ◀/▶ to select a type of storage device and press "ENTER".
- 2 Use ◀/▶ to select a file type and press "ENTER"
- 3 Use ▲/▼ to select a file folder or a file. Press "ENTER" to open the folder or play the selected file.
- 4 Press "BACK" to go back to previous page.

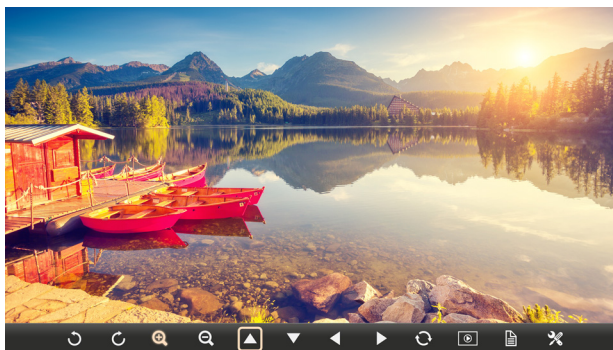
Photo

When viewing photos



You can press ▲/▼ to select a file and press "ENTER" to access.

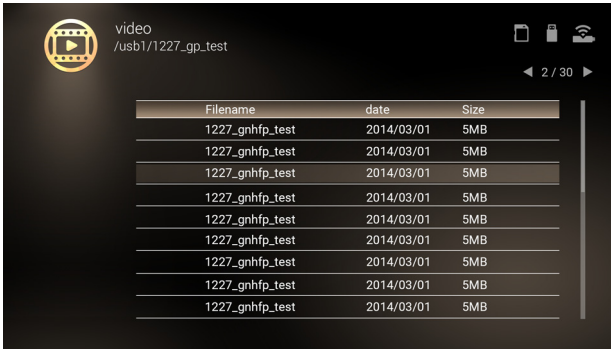
When playing photos



You can press ◀/▶ to select a feature and press "ENTER" to execute. For details on the Photo Setting, see "Photo Setting".

Video

When viewing video files



You can press ▲/▼ to select a file and press "ENTER" to access.

When playing videos



You can press ◀/▶ to select a feature such as PLAY/STOP/REPEAT/REWIND/FAST-FORWARD/VOLUME UP/VOLUME DOWN and press "ENTER" to execute. For details on the Video Setting, see "Video Setting".

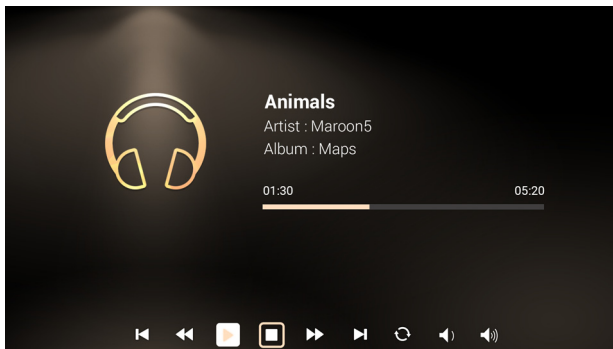
Music

When viewing music files



You can press ▲/▼ to select the file and press "ENTER" to access.

When playing music



You can press ◀/▶ to select a feature such as PLAY/STOP/REPEAT/REWIND/FAST-FORWARD/VOLUME UP/VOLUME DOWN and press "ENTER" to execute.

Media gallery setting

Media setup page allows you to adjust settings for file listing and playing.

- 1 Use ◀/▶ to select Setting and press "ENTER".
- 2 Use ▲/▼ to select a file type and press "ENTER"
- 3 Use ▲/▼ to select a menu item and press ◀/▶ to change setting values.
- 4 Use ▲/▼/◀/▶ to select "V" to save the settings or select "X" to cancel.

Video Setting

Menu item	Options
Repeat Mode	Sequence/Single/Once

Photo Setting

Menu item	Options
Display Ratio	Original/Full screen

Music Setting

Menu item	Options
Repeat Mode	Sequence/Single/Random/Once

Supported multi-media formats

1	JPEG Decode	Supports JPEG picture formats
		Thumbnails preview
		Supports BMP picture formats
2	Video Decode and Movie Formats	Supports MJPEG
		Supports H263, H264
		Supports AVI, MOV movie formats
		Supports SRT Subtitle format.
3	Music Formats	Supports PCM, ADPCM audio formats
		Supports WMA/OGG/MP3
4	Card Reader Interface	Supports SD memory card
		Supports SDHC memory card
5	USB Interface	Supports mass storage class
		Supports USB2.0



NOTE: The video clip and its SRT subtitle file must be located in the same folder and with same filename (ex. Abcde.avi & Abcde.srt).



NOTE: Some user-made subtitles may not work properly.



NOTE: Video clips produced with some encoders may not be played correctly. Detail is to follow format supported table.



NOTE: The media mode supports max. 999 directories and max. 9999 files for USB devices/disks.

Supported photo formats

Image type (ext name)	Sub type	Encode type	Max pixels
Jpeg / Jpg	Baseline	YUV420	No Limitation
		YUV422	
		YUV440	
		YUV444	
	Progressive	YUV420	5120 X 3840
		YUV422	
		YUV440	
		YUV444	
BMP			No Limitation



NOTE: JPEG header size must be under 512 Kbytes.

Supported music formats

Music type (ext name)	Sample rate (KHz)	Bit rate (Kbps)
MP3	8-48	8-320
WMA	22-48	5-320
OGG	8-48	64-320
ADPCM-WAV	8-48	32-384
PCM-WAV	8-48	128-1536
AAC	8-48	8-256

Supported video formats

File format	Video format	MAX res	MAX bit rate	Frame rate	Audio format	Remark
AVI MKV	XVID MPEG-2/4 H.264 M-JPEG WMV3	1080P	30Mbps	30fps	MPEG1/2/3 PCM ADPCM AAC	No support VC-1 AP H. 264 support less than 6 reference frames
TS	MPEG-2 H.264	1080P	30Mbps	30fps	MPEG1/2/3 LPCM AAC	H. 264 support less than 6 reference frames
DAT VOB MPG MPEG	MPEG-1 MPEG-2	1080P	30Mbps	30fps	MPEG1/2/3 LPCM	
MOV MP4	MPEG-4 H.264	1080P	30Mbps	30fps	PCM AAC	H. 264 support less than 6 reference frames
WMV	WMV3	1080P	25Mbps	30fps	WMA2 WMA3	No Support VC-1 AP



NOTE: B-Frame function is not supported.

Supported subtitle formats

Format	Font	Subtitle Size
Standard SRT	UTF-8/ UTF-16	4bits up to 448x200 2bits up to 896x200



NOTE: Mixed code in subtitle files is not supported.

eDisplayPro

The eDisplayPro welcome screen

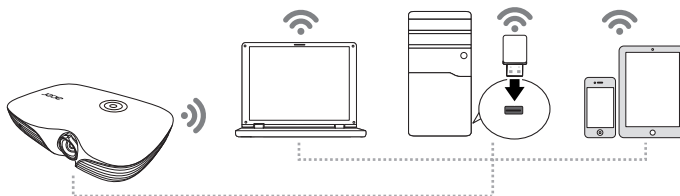


NOTE: To utilize the wireless display function, make sure you have updated the firmware to the latest version from www.acer.com.

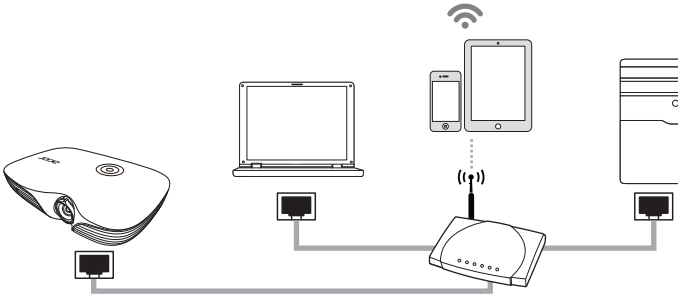
This mode allows you to project contents or play multi-media files from your computer or smart device via LAN or WiFi.

Connecting your computer/smart device to the projector

- The projector can act as an access point (AP), allowing your computer or smart device to connect to the projector wirelessly. Make sure that the WiFi function in the projector's "Network" setting menu is turned on (which is the default setting).



- You can also connect the projector with your computer or smart device when they are under the same local area network. Under this connection mode, a LAN IP assigned by the wired network will display in the projector's "Network" setting. If a RJ-45 cable is not connected, the LAN IP will be 0.0.0.0.



- Download and install the Acer eDisplayPro or eDisplayPro from Google Play, Apple App Store, Acer global website to your smart device or computer.
- Turn on the projector and select eDisplayPro. The eDisplayPro welcome screen displays.
- For wireless connection, open the WiFi settings on your smart device or computer, and find the projector's SSID (displayed on the eDisplayPro welcome screen) and connect to it. If you are prompted to enter a password, enter the password displayed on the eDisplayPro welcome screen. For wired connection, make sure that your projector and computer/smart device are connected to the same local area network.
- Launch the Acer eDisplayPro app on your smart device or computer.
- Choose the desired function. You can connect the projector to the internet by adjusting the Internet settings in the Acer eDisplayPro app.

Mirroring Display (optional)

In the Acer eDisplayPro app, choose "Mirroring Display", you can enjoy mirroring projection from your smartphone to the projector (Android 4.2.2 and selected brand devices).



NOTE: To utilize the Mirroring Display function (optional), make sure you have updated the firmware to the latest version from www.acer.com.



NOTE: This function is only available for Windows 8.1. The default PIN code is 12345670.

System Requirements:

- Windows

Minimum requirement

Component	Requirement	Remark
CPU	Dual Core Intel Core i 1.6 GHz or higher	ATOM and Celeron are not supported
Graphic card	Intel, nVIDIA or ATI graphic card with 64MB VRAM or above	
Operating System	Windows XP SP3, Vista SP2, Win 7 SP1 and Win 8	Not support Starter version
HDD	40MB free space	40MB free space

Recommend system settings

CPU	Dual Core Intel Core i5 2.4Ghz
Memory	DDR 4GB and above
Graphic card	256MB VRAM or above
Operating System	Windows 7 SP1

- Mac OS

CPU	Dual Core Intel Core i 1.4 GHz or higher (PowerPC not supported)
Graphic card	Intel, nVIDIA or ATI graphic card with 64MB VRAM or above
OS	Mac OS X 10.7 and above
WiFi	802.11n
Recommended models	Mac Book series and iMac series after E/2011

USB Connection

This mode allows you to access the projector's internal memory.

- 1 Connect the projector to your computer using a USB cable. Plug the type B host to the projector and the type A host to your computer.
- 2 The projector can be seen as a portable device with a capacity of up to 4 GB on your computer. You can now transfer media files to the projector.