

# MONTANA CANADIAN ROCKIES ECOREGION

## G1 and G2 Species Habitat Management Guidelines



### INTRODUCTION

The Sustainable Forestry Initiative® (SFI) [2022 Standards](#) include requirements that promote and conserve Forests with Exceptional Conservation Value (FECV), which includes critically imperiled (G1) and imperiled (G2) species. This fact sheet summarizes the analysis of FECV habitat within this ecoregion and provides habitat management recommendations that would benefit species potentially found here.

### HABITAT TYPES

- Mixed Conifer Forest
- Riparian/Streams
- Special Sites (Alpine, Cave, Forest Edge, Shrubland, Grasslands, Bare Rock/Talus)

### MIXED CONIFER FOREST MANAGEMENT

- Protect known locations
- Retain legacy trees, stumps, and logs
- Retain large diameter trees with cavities or broken tops
- Leave skips and gaps with dense shrub component
- Retain large slash into piles

### RIPARIAN/STREAMS MANAGEMENT

- Protect known locations
- Maintain well vegetated riparian buffers
- Plant a diversity of both hardwood and conifer trees in the riparian zone
- Retain large diameter trees near streams and rivers
- Buffer wetlands, springs, and headwater areas

### SPECIAL SITES MANAGEMENT

- Protect known locations
- Buffer special sites
- Provide floral resources such as Asters, Chrysothamnus, and Cirsium



**Northern Rocky Mountains  
Refugium Caddisfly**



**Britton's Dry Rock Moss**



**Suckley Cuckoo Bumble Bee**

*All management recommendations assume that operators and land managers are following all applicable BMPs, laws, and regulations.*

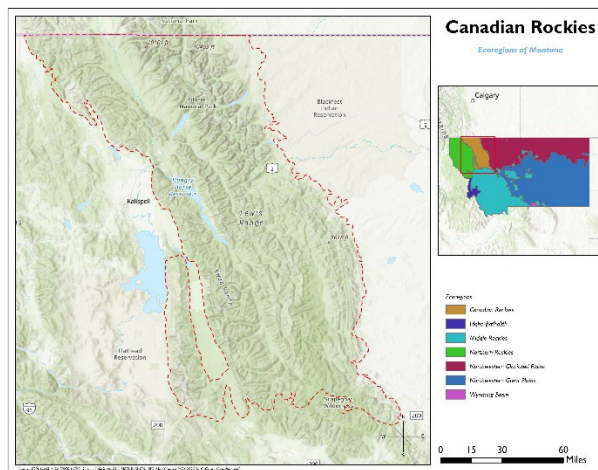
# MONTANA CANADIAN ROCKIES ECOREGION

## G1 and G2 Species Habitat Management Guidelines



SCIENTIFIC NAME	COMMON NAME	HABITAT	STATUS
<i>Nodobryoria subdivergens</i>	<a href="#">Alpine Foxtail Lichen</a>	Alpine	G2G3
<i>Oreohelix alpina</i>	<a href="#">Alpine Mountainsnail</a>	Bare Rock/Talus	G2
<i>Oreohelix elrodi</i>	<a href="#">Carinate Mountainsnail</a>	Bare Rock/Talus	G2
<i>Synthyris canbyi</i>	<a href="#">Mission Mountain kintentails</a>	Bare Rock/Talus	G2G3
<i>Stygobromus glacialis</i>	<a href="#">Glacier Amphipod</a>	Cave	G1
<i>Discus brunsoni</i>	<a href="#">Lake Disc</a>	Forest Edge	G1
<i>Botrychium gallicomontanum</i>	<a href="#">Frenchman's Bluff Moonwort</a>	Grassland	G2
<i>Silene spaldingii</i>	<a href="#">Spalding's Catchfly</a>	Grassland	G2
<i>Grimmia brittoniae</i>	<a href="#">Britton's Dry Rock Moss</a>	Mixed Conifer Forest	G2
<i>Suwallia salish</i>	<a href="#">A Stonefly</a>	Riparian/Streams	G1
<i>Goereilla baumanni</i>	<a href="#">Northern Rocky Mountains Refugium Caddisfly</a>	Riparian/Streams	G1
<i>Zapada glacier</i>	<a href="#">Western Glacier Stonefly</a>	Riparian/Streams	G1
<i>Allomyia hector</i>	<a href="#">A Caddisfly</a>	Riparian/Streams	G1G2
<i>Lednia tumana</i>	<a href="#">Meltwater Lednian Stonefly</a>	Riparian/Streams	G1G2
<i>Rhyacophila ophrys</i>	<a href="#">A Rhyacophilan Caddisfly</a>	Riparian/Streams	G1G3
<i>Parameletus columbiae</i>	<a href="#">A Mayfly</a>	Riparian/Streams	G2
<i>Rhyacophila alexanderi</i>	<a href="#">Alexander's Rhyacophilan Caddisfly</a>	Riparian/Streams	G2
<i>Verrucaria kootenaica</i>	<a href="#">Kootenai Speck Lichen</a>	Riparian/Streams	G2
<i>Soyedina potteri</i>	<a href="#">Northern Rocky Mountains Refugium Stonefly</a>	Riparian/Streams	G2
<i>Mimulus hymenophyllus</i>	<a href="#">Thinsepal monkeyflower</a>	Riparian/Streams	G2
<i>Salmasellus steganothrix</i>	<a href="#">A Cave Obligate Isopod</a>	Riparian/Streams	G2G3
<i>Rhyacophila ebria</i>	<a href="#">A Rhyacophilan Caddisfly</a>	Riparian/Streams	G2G3
<i>Rhyacophila unimaculata</i>	<a href="#">A Rhyacophilan Caddisfly</a>	Riparian/Streams	G2G3
<i>Megaleuctra stigmata</i>	<a href="#">Giant Needlefly</a>	Riparian/Streams	G2G3
<i>Bombus suckleyi</i>	<a href="#">Suckley Cuckoo Bumble Bee</a>	Shrubland	G2G3

\*species links provided when available



All management recommendations assume that operators and land managers are following all applicable BMPs, laws, and regulations.

# MONTANA IDAHO BATHOLITH ECOREGION

## G1 and G2 Species Habitat Management Guidelines



### INTRODUCTION

The Sustainable Forestry Initiative® (SFI) [2022 Standards](#) include requirements that promote and conserve Forests with Exceptional Conservation Value (FECV), which includes critically imperiled (G1) and imperiled (G2) species. This fact sheet summarizes the analysis of FECV habitat within this ecoregion and provides habitat management recommendations that would benefit species potentially found here.

### HABITAT TYPES

- Mixed Conifer Forest
- Riparian/Streams/Pools
- Special sites (Alpine, Bare Rock/Talus, Shrubland)

### MIXED CONIFER FOREST MANAGEMENT

- Protect known locations
- Retain legacy trees, stumps, and logs
- Retain large diameter trees with cavities or broken tops
- Leave skips and gaps with dense shrub component
- Retain large slash into piles

### RIPARIAN/STREAMS/POOLS MANAGEMENT

- Protect known locations
- Maintain well vegetated riparian buffers
- Plant a diversity of both hardwood and conifer trees
- Retain large diameter trees near streams and rivers and pools
- Buffer wetlands, springs, pools, and headwater areas

### SPECIAL SITES MANAGEMENT

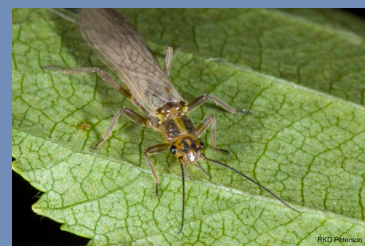
- Protect known locations,
- Provide floral resources such as Asters, Chrysothamnus, and Cirsium
- Provide buffers



**Suckley Cuckoo Bumble Bee**



**Sapphire Rockcress**



**Lolo Sailfly**

*All management recommendations assume that operators and land managers are following all applicable BMPs, laws, and regulations.*



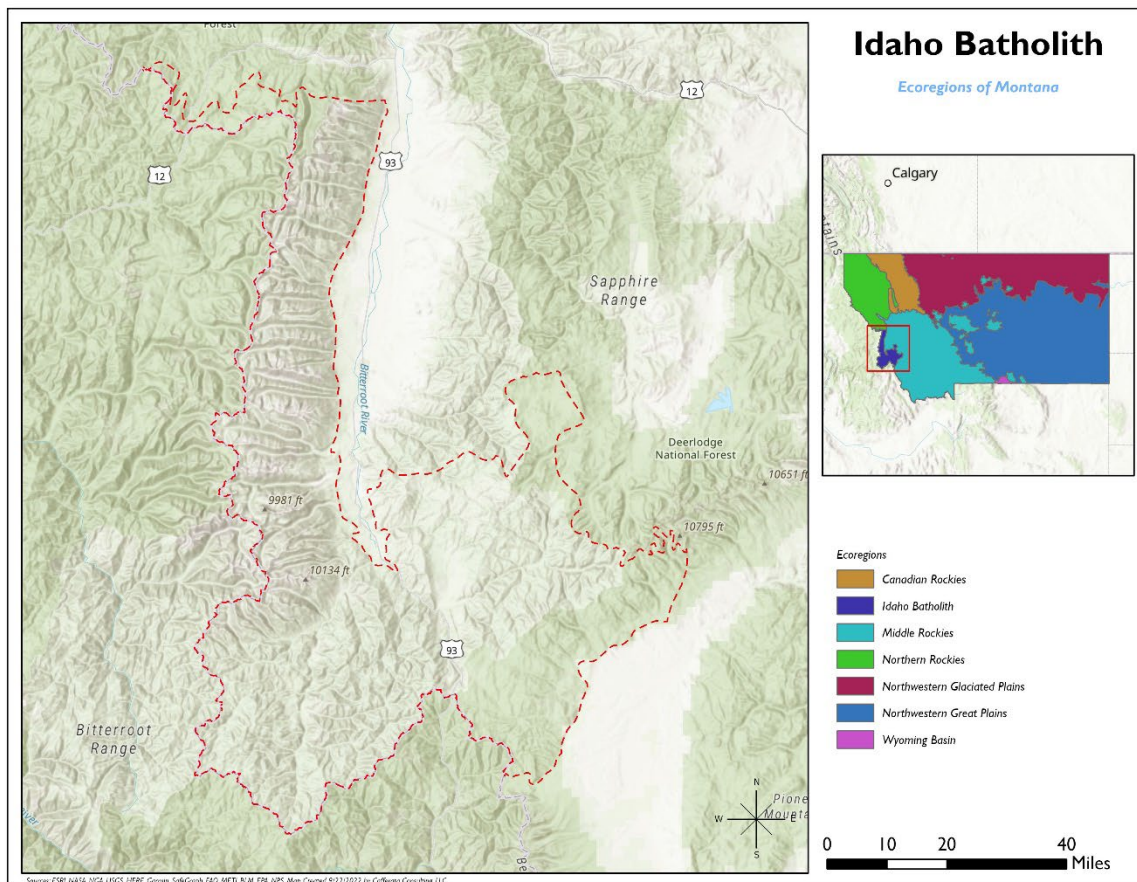
# MONTANA IDAHO BATHOLITH ECOREGION

## G1 and G2 Species Habitat Management Guidelines



SCIENTIFIC NAME	COMMON NAME	HABITAT	STATUS
<i>Physaria humilis</i>	Bitterroot Bladderpod	Alpine	G2
<i>Nodobryoria subdivergens</i>	<a href="#">Alpine Foxtail Lichen</a>	Alpine	G2G3
<i>Synthyris canbyi</i>	<a href="#">Mission Mountain kittentails</a>	Bare Rock/Talus	G2G3
<i>Boechera fecunda</i>	<a href="#">Sapphire Rockcress</a>	Mixed Conifer Forest	G2
<i>Micranthes tempestiva</i>	<a href="#">Storm Saxifrage</a>	Pools	G2G3
<i>Soliperla salish</i>	<a href="#">Clearwater Roachfly</a>	Riparian/Streams	G2
<i>Sweltsa durfeeii</i>	<a href="#">Lolo Sailfly</a>	Riparian/Streams	G2
<i>Bombus suckleyi</i>	<a href="#">Suckley Cuckoo Bumble Bee</a>	Shrubland	G2G3

\*Species links provided when available



All management recommendations assume that operators and land managers are following all applicable BMPs, laws, and regulations.

# MONTANA MIDDLE ROCKIES ECOREGION

## G1 and G2 Species Habitat Management Guidelines



### INTRODUCTION

The Sustainable Forestry Initiative® (SFI) [2022 Standards](#) include requirements that promote and conserve Forests with Exceptional Conservation Value (FECV), which includes critically imperiled (G1) and imperiled (G2) species. This fact sheet summarizes the analysis of FECV habitat within this ecoregion and provides habitat management recommendations that would benefit species potentially found here.

### HABITAT TYPES

- Mixed Conifer Forest
- Riparian/Streams
- Special Sites (Bare Rock/Talus, Grassland, Pools, Shrubland, Soil/Organic Material)

### MIXED CONIFER FOREST MANAGEMENT

- Protect known locations
- Retain legacy trees, stumps, and logs
- Retain large diameter trees with cavities or broken tops
- Leave skips and gaps with dense shrub component
- Retain large slash into piles

### RIPARIAN/STREAMS MANAGEMENT

- Protect known locations
- Maintain well vegetated riparian buffers
- Plant a diversity of both hardwood and conifer trees in the riparian zone
- Retain large diameter trees near streams and rivers
- Buffer wetlands, springs, and headwater areas

### SPECIAL SITES MANAGEMENT

- Protect known locations
- Buffer special sites
- Provide floral resources such as Asters, Chrysothamnus, and Cirsium



**Suckley Cuckoo Bumble Bee**



**Ute Ladies'-tresses**



**Bitterroot Mountainsnail**

*All management recommendations assume that operators and land managers are following all applicable BMPs, laws, and regulations.*

# MONTANA MIDDLE ROCKIES ECOREGION

## G1 and G2 Species Habitat Management Guidelines



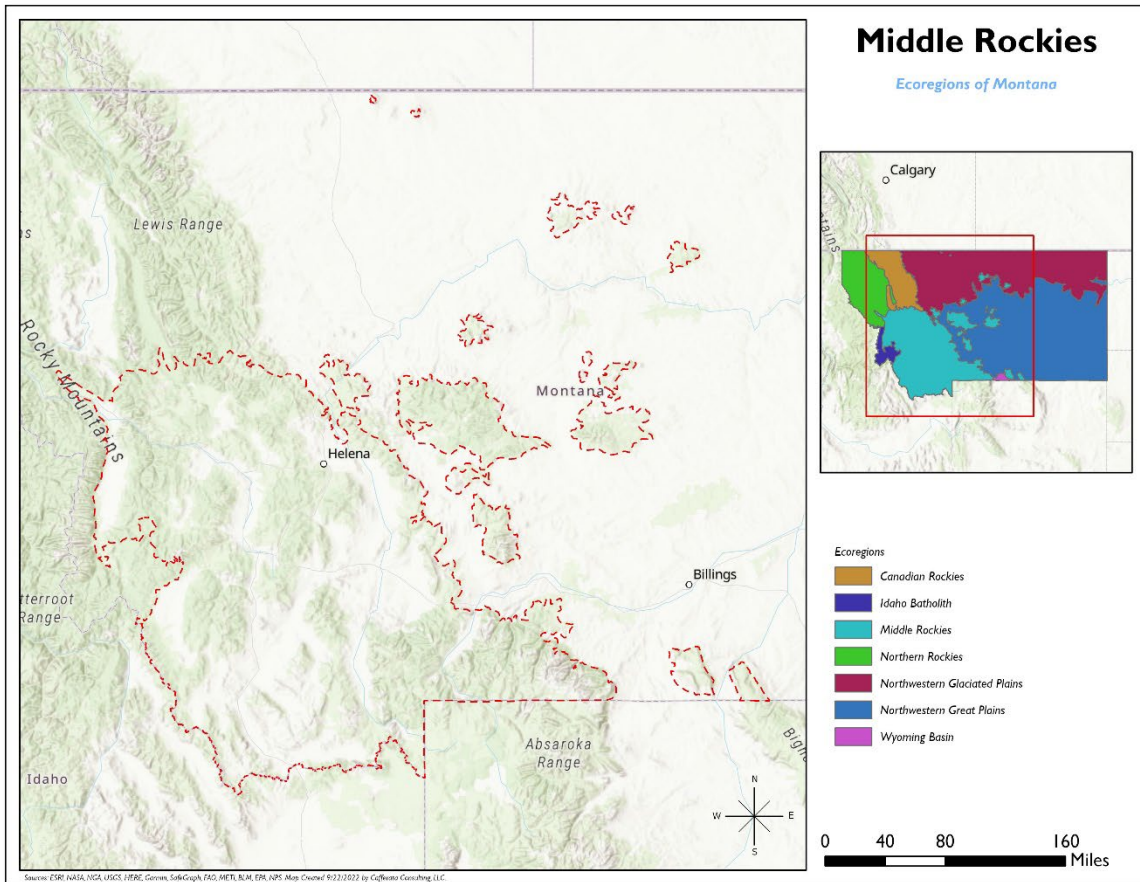
SCIENTIFIC NAME	COMMON NAME	HABITAT	STATUS
<i>Oreohelix carinifera</i>	<a href="#">Keeled Mountainsnail</a>	Bare Rock/Talus	G1
<i>Corypus cochlearis</i>	<a href="#">A Millipede</a>	Bare Rock/Talus	G1G3
<i>Oreohelix alpina</i>	<a href="#">Alpine Mountainsnail</a>	Bare Rock/Talus	G2
<i>Oreohelix elrodi</i>	<a href="#">Carinate Mountainsnail</a>	Bare Rock/Talus	G2
<i>Oreohelix haydeni</i>	<a href="#">Lyrate Mountainsnail</a>	Bare Rock/Talus	G2
<i>Oreohelix pygmaea</i>	<a href="#">Pygmy Mountainsnail</a>	Bare Rock/Talus	G2
<i>Synthyris canbyi</i>	<a href="#">Mission Mountain kittentails</a>	Bare Rock/Talus	G2G3
<i>Erigeron parryi</i>	<a href="#">Parry's Fleabane</a>	Bare Rock/Talus	G2G3
<i>Botrychium gallicomontanum</i>	<a href="#">Frenchman's Bluff Moonwort</a>	Grassland	G2
<i>Cirsium longistylum</i>	<a href="#">Long-styled Thistle</a>	Grassland	G2G3
<i>Oreohelix amariradix</i>	<a href="#">Bitterroot Mountainsnail</a>	Mixed Conifer Forest	G1G2
<i>Adityla cucullata</i>	<a href="#">A Millipede</a>	Mixed Conifer Forest	G1G3
<i>Physaria lesicii</i>	<a href="#">Lesica's Bladderpod</a>	Mixed Conifer Forest	G2
<i>Boechera fecunda</i>	<a href="#">Sapphire Rockcress</a>	Mixed Conifer Forest	G2
<i>Spiranthes diluvialis</i>	<a href="#">Ute Ladies'-tresses</a>	Mixed Conifer Forest	G2G3
<i>Micranthes tempestiva</i>	<a href="#">Storm Saxifrage</a>	Pools	G2G3
<i>Ephydatia cooperensis</i>	<a href="#">A Freshwater Sponge</a>	Riparian/Streams	G1
<i>Pyrgulopsis bedfordensis</i>	<a href="#">Bedford Springsnail</a>	Riparian/Streams	G1
<i>Pyrgulopsis blainica</i>	<a href="#">Blaine Pyrg</a>	Riparian/Streams	G1
<i>Microcyloepus browni</i>	<a href="#">Brown's Microcyloepus Riffle Beetle</a>	Riparian/Streams	G1
<i>Goereilla baumanni</i>	<a href="#">Northern Rocky Mountains Refugium Caddisfly</a>	Riparian/Streams	G1
<i>Zaitzevia thermae</i>	<a href="#">Warm Spring Zaitzevian Riffle Beetle</a>	Riparian/Streams	G1
<i>Zapada glacier</i>	<a href="#">Western Glacier Stonefly</a>	Riparian/Streams	G1
<i>Austrotyla montani</i>	<a href="#">A Millipede</a>	Riparian/Streams	G1G3
<i>Cinygmula kootenai</i>	<a href="#">Kootenay Flat-headed Mayfly</a>	Riparian/Streams	G1G3
<i>Rhyacophila newelli</i>	<a href="#">A Rhyacophilan Caddisfly</a>	Riparian/Streams	G2
<i>Rhyacophila oreia</i>	<a href="#">A Rhyacophilan Caddisfly</a>	Riparian/Streams	G2
<i>Rhyacophila alexanderi</i>	<a href="#">Alexander's Rhyacophilan Caddisfly</a>	Riparian/Streams	G2
<i>Primula alcalina</i>	<a href="#">Alkali Primrose</a>	Riparian/Streams	G2
<i>Sweltsa durfeei</i>	<a href="#">Lolo Sailfly</a>	Riparian/Streams	G2
<i>Soyedina potteri</i>	<a href="#">Northern Rocky Mountains Refugium Stonefly</a>	Riparian/Streams	G2
<i>Thelypodium paniculatum</i>	<a href="#">Northwestern Thelypody</a>	Riparian/Streams	G2
<i>Mimulus hymenophyllus</i>	<a href="#">Thinsepal monkeyflower</a>	Riparian/Streams	G2
<i>Cinygmula gartrelli</i>	<a href="#">A Mayfly</a>	Riparian/Streams	G2G3
<i>Haplodontium macrocarpum</i>	<a href="#">Waterfall Copper Moss</a>	Riparian/Streams	G2G3
<i>Argiacris rehni</i>	<a href="#">Rehn's Slow Grasshopper</a>	Shrubland	G2G3
<i>Bombus suckleyi</i>	<a href="#">Suckley Cuckoo Bumble Bee</a>	Shrubland	G2G3
<i>Cladonia luteoalba</i>	<a href="#">Lemon Pixie-Cup Lichen</a>	Soil/Organic Material	G2G3

\*Species links provided when available

All management recommendations assume that operators and land managers are following all applicable BMPs, laws, and regulations.

# MONTANA MIDDLE ROCKIES ECOREGION

## G1 and G2 Species Habitat Management Guidelines



All management recommendations assume that operators and land managers are following all applicable BMPs, laws, and regulations.



# MONTANA NORTHERN ROCKIES ECOREGION

## G1 and G2 Species Habitat Management Guidelines



### INTRODUCTION

The Sustainable Forestry Initiative® (SFI) [2022 Standards](#) include requirements that promote and conserve Forests with Exceptional Conservation Value (FECV), which includes critically imperiled (G1) and imperiled (G2) species. This fact sheet summarizes the analysis of FECV habitat within this ecoregion and provides habitat management recommendations that would benefit species potentially found here.

### HABITAT TYPES

- Bare Rock/Talus
- Mixed Conifer Forest
- Riparian/Streams
- Special Sites (Grassland, Shrubland, Alpine)

### BARE ROCK/TALUS MANAGEMENT

- Protect known locations
- Buffer special sites

### MIXED CONIFER FOREST MANAGEMENT

- Protect known locations,
- Retain legacy trees, stumps and logs
- Retain large diameter trees with cavities or broken tops
- Leave skips and gaps with dense shrub component
- Retain large slash into piles

### RIPARIAN/STREAMS MANAGEMENT

- Protect known locations
- Maintain well vegetated riparian buffers
- Plant a diversity of both hardwood and conifer trees
- Retain large diameter trees near streams and rivers
- Buffer wetlands, springs, and headwater areas

### SPECIAL SITES MANAGEMENT

- Provide floral resources such as Asters, Chrysothamnus, and Cirsium
- Protect known locations
- Provide buffers



**Suckley Cuckoo Bumble Bee**



**Northern Rocky Mountains  
Refugium Caddisfly**



**Bitterroot Mountainsnail**

*All management recommendations assume that operators and land managers are following all applicable BMPs, laws, and regulations.*



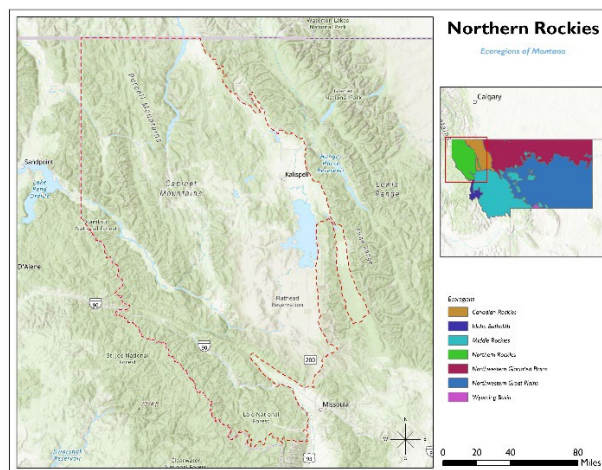
# MONTANA NORTHERN ROCKIES ECOREGION

## G1 and G2 Species Habitat Management Guidelines



SCIENTIFIC NAME	COMMON NAME	HABITAT	STATUS
<i>Douglasia conservatorum</i>	<a href="#">Bloom Peak Douglasia</a>	Alpine	G1
<i>Physaria humilis</i>	<a href="#">Bitterroot Bladderpod</a>	Alpine	G2
<i>Nodobryoria subdivergens</i>	<a href="#">Alpine Foxtail Lichen</a>	Alpine	G2G3
<i>Corypus cochlearis</i>	<a href="#">A Millipede</a>	Bare Rock/Talus	G1G3
<i>Oreohelix elrodi</i>	<a href="#">Carinate Mountainsnail</a>	Bare Rock/Talus	G2
<i>Oreohelix haydeni</i>	<a href="#">Lyrate Mountainsnail</a>	Bare Rock/Talus	G2
<i>Silene spaldingii</i>	<a href="#">Spalding's Catchfly</a>	Grassland	G2
<i>Oreohelix amariradix</i>	<a href="#">Bitterroot Mountainsnail</a>	Mixed Conifer Forest	G1G2
<i>Orthogmus oculatus</i>	<a href="#">A Millipede</a>	Mixed Conifer Forest	G1G3
<i>Taiyutyla curvata</i>	<a href="#">A Millipede</a>	Mixed Conifer Forest	G1G3
<i>Grimmia brittoniae</i>	<a href="#">Britton's Dry Rock Moss</a>	Mixed Conifer Forest	G2
<i>Suwallia salish</i>	<a href="#">A Stonefly</a>	Riparian/Streams	G1
<i>Goereilla baumanni</i>	<a href="#">Northern Rocky Mountains Refugium Caddisfly</a>	Riparian/Streams	G1
<i>Philocasca banksi</i>	<a href="#">A Caddisfly</a>	Riparian/Streams	G1G3
<i>Austrotyla montani</i>	<a href="#">A Millipede</a>	Riparian/Streams	G1G3
<i>Rhyacophila alexanderi</i>	<a href="#">Alexander's Rhyacophilan Caddisfly</a>	Riparian/Streams	G2
<i>Soliperla salish</i>	<a href="#">Clearwater Roachfly</a>	Riparian/Streams	G2
<i>Sweltsa durfeei</i>	<a href="#">Lolo Sailfly</a>	Riparian/Streams	G2
<i>Soyedina potteri</i>	<a href="#">Northern Rocky Mountains Refugium Stonefly</a>	Riparian/Streams	G2
<i>Fisherola nuttalli</i>	<a href="#">Shortface Lanx</a>	Riparian/Streams	G2
<i>Salmasellus steganothrix</i>	<a href="#">A Cave Obligate Isopod</a>	Riparian/Streams	G2G3
<i>Cinygmula gartrelli</i>	<a href="#">A Mayfly</a>	Riparian/Streams	G2G3
<i>Rhyacophila unimaculata</i>	<a href="#">A Rhyacophilan Caddisfly</a>	Riparian/Streams	G2G3
<i>Megaleuctra stigmata</i>	<a href="#">Giant Needlefly</a>	Riparian/Streams	G2G3
<i>Bombus suckleyi</i>	<a href="#">Suckley Cuckoo Bumble Bee</a>	Shrubland	G2G3

\*Species links provided when available



All management recommendations assume that operators and land managers are following all applicable BMPs, laws, and regulations.

# MONTANA NORTHWESTERN GLACIATED PLAINS ECOREGION

## G1 and G2 Species Habitat Management Guidelines



### INTRODUCTION

The Sustainable Forestry Initiative® (SFI) [2022 Standards](#) include requirements that promote and conserve Forests with Exceptional Conservation Value (FECV), which includes critically imperiled (G1) and imperiled (G2) species. This fact sheet summarizes the analysis of FECV habitat within this ecoregion and provides habitat management recommendations that would benefit species potentially found here.

### HABITAT TYPES

- Special Sites (Bare Rock/Talus, Grassland, Pools, Shrubland)
- Mixed Conifer Forest
- Riparian/Streams

### MIXED CONIFER FOREST MANAGEMENT

- Protect known locations
- Retain legacy trees, stumps, and logs
- Retain large diameter trees with cavities or broken tops
- Leave skips and gaps with dense shrub component
- Retain large slash into piles

### RIPARIAN/STREAMS MANAGEMENT

- Protect known locations
- Maintain well vegetated riparian buffers
- Plant a diversity of both hardwood and conifer trees in the riparian zone
- Retain large diameter trees near streams and rivers
- Buffer wetlands, springs, and headwater areas

### SPECIAL SITES MANAGEMENT

- Protect known locations
- Buffer special sites
- Provide floral resources such as Asters, Chrysothamnus, and Cirsium



**Suckley Cuckoo Bumble Bee**



**Whooping Crane**



**Pallid Sturgeon**

*All management recommendations assume that operators and land managers are following all applicable BMPs, laws, and regulations.*

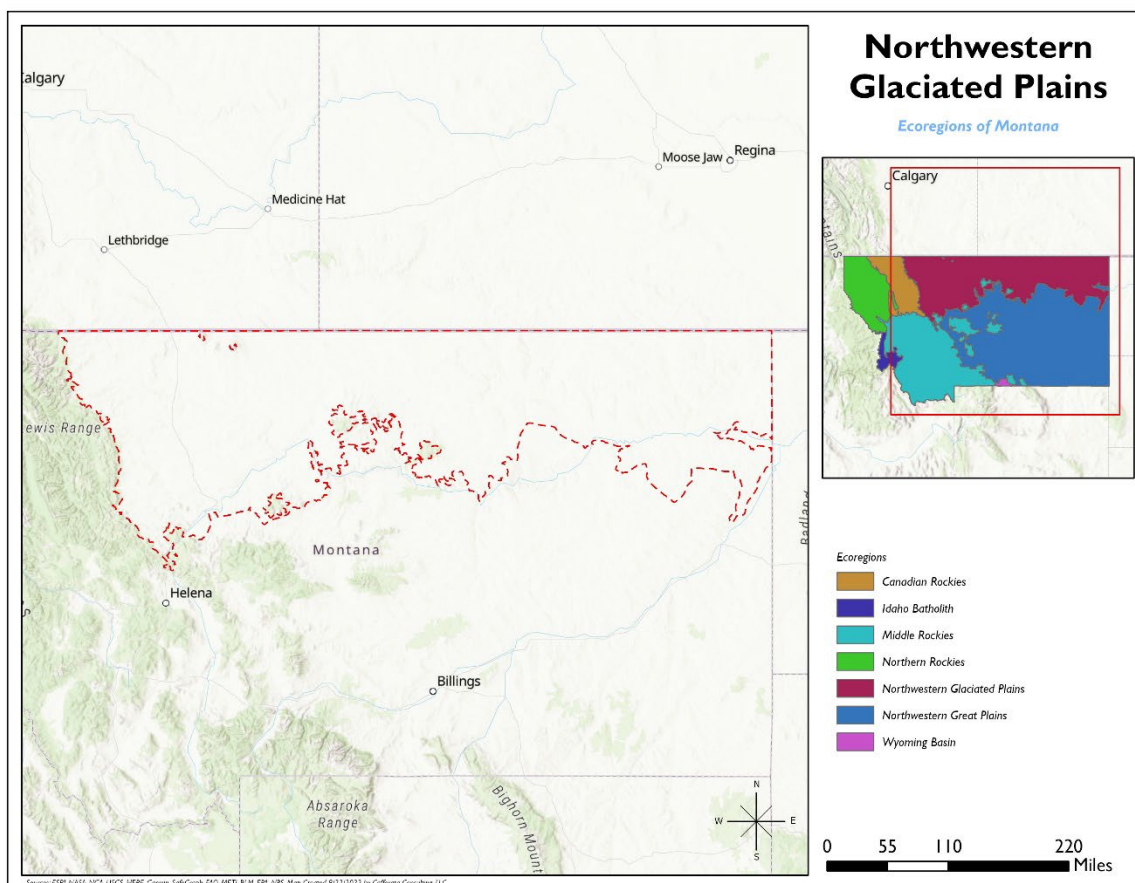
# MONTANA NORTHWESTERN GLACIATED PLAINS ECOREGION

## G1 and G2 Species Habitat Management Guidelines



SCIENTIFIC NAME	COMMON NAME	HABITAT	STATUS
<i>Oreohelix elrodi</i>	<a href="#">Carinate Mountainsnail</a>	Bare Rock/Talus	G2
<i>Myotis septentrionalis</i>	<a href="#">Northern Myotis</a>	Mixed Conifer Forest	G2G3
<i>Lepidurus bilobatus</i>	<a href="#">Bilobed Tadpole Shrimp</a>	Pools	G2G3
<i>Grus americana</i>	<a href="#">Whooping Crane</a>	Riparian/Streams	G1
<i>Entosthodon rubiginosus</i>	<a href="#">Rusty Cord Moss</a>	Riparian/Streams	G1G3
<i>Scaphirhynchus albus</i>	<a href="#">Pallid Sturgeon</a>	Riparian/Streams	G2
<i>Heptagenia whitingi</i>	<a href="#">A Mayfly</a>	Riparian/Streams	G2G3
<i>Leucrocuta petersi</i>	<a href="#">A Mayfly</a>	Riparian/Streams	G2G3
<i>Bombus suckleyi</i>	<a href="#">Suckley Cuckoo Bumble Bee</a>	Shrubland	G2G3

\*Species links provided when available



All management recommendations assume that operators and land managers are following all applicable BMPs, laws, and regulations.

# MONTANA NORTHWESTERN GREAT PLAINS ECOREGION

## G1 and G2 Species Habitat Management Guidelines



### INTRODUCTION

The Sustainable Forestry Initiative® (SFI) [2022 Standards](#) include requirements that promote and conserve Forests with Exceptional Conservation Value (FECV), which includes critically imperiled (G1) and imperiled (G2) species. This fact sheet summarizes the analysis of FECV habitat within this ecoregion and provides habitat management recommendations that would benefit species potentially found here.

### HABITAT TYPES

- Mixed Conifer Forest
- Riparian/Streams
- Special Sites (Bare Rock/Talus, Bog/Fen, Grassland, Shrubland)

### MIXED CONIFER FOREST MANAGEMENT

- Protect known locations
- Retain legacy trees, stumps, and logs
- Retain large diameter trees with cavities or broken tops
- Leave skips and gaps with dense shrub component
- Retain large slash into piles

### RIPARIAN/STREAMS MANAGEMENT

- Protect known locations
- Maintain well vegetated riparian buffers
- Plant a diversity of both hardwood and conifer trees in the riparian zone
- Retain large diameter trees near streams and rivers
- Buffer wetlands, springs, and headwater areas

### SPECIAL SITES MANAGEMENT

- Protect known locations
- Buffer special sites
- Provide floral resources such as Asters, Chrysothamnus, and Cirsium



**Suckley Cuckoo Bumble Bee**



**Whooping Crane**



**Black-footed Ferret**

*All management recommendations assume that operators and land managers are following all applicable BMPs, laws, and regulations.*



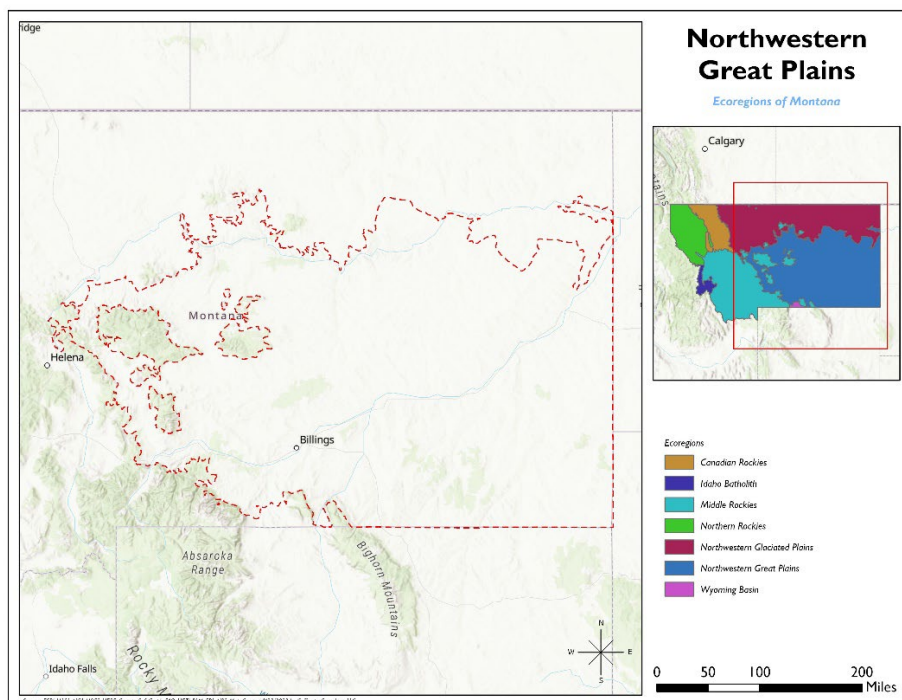
# MONTANA NORTHWESTERN GREAT PLAINS ECOREGION

## G1 and G2 Species Habitat Management Guidelines



SCIENTIFIC NAME	COMMON NAME	HABITAT	STATUS
<i>Oreohelix pygmaea</i>	<a href="#">Pygmy Mountainsnail</a>	Bare Rock/Talus	G2
<i>Erigeron parryi</i>	<a href="#">Parry's Fleabane</a>	Bare Rock/Talus	G2G3
<i>Atrytone arogos</i>	<a href="#">Arogos Skipper</a>	Bog/Fen	G2G3
<i>Xanthoparmelia neowyomingica</i>	<a href="#">A Rock-shield Lichen</a>	Grassland	G1
<i>Mustela nigripes</i>	<a href="#">Black-footed Ferret</a>	Grassland	G1
<i>Cirsium longistylum</i>	<a href="#">Long-styled Thistle</a>	Grassland	G2G3
<i>Physaria lesicii</i>	Lesica's Bladderpod	Mixed Conifer Forest	G2
<i>Myotis septentrionalis</i>	<a href="#">Northern Myotis</a>	Mixed Conifer Forest	G2G3
<i>Physella zionis</i>	<a href="#">Wet-rock Physa</a>	Riparian/Streams	G1
<i>Grus americana</i>	<a href="#">Whooping Crane</a>	Riparian/Streams	G1
<i>Anepeorus rusticus</i>	<a href="#">A Sand-dwelling Mayfly</a>	Riparian/Streams	G2
<i>Scaphirhynchus albus</i>	<a href="#">Pallid Sturgeon</a>	Riparian/Streams	G2
<i>Mimulus hymenophyllus</i>	<a href="#">Thinsepel monkeyflower</a>	Riparian/Streams	G2
<i>Heptagenia whitingi</i>	<a href="#">A Mayfly</a>	Riparian/Streams	G2G3
<i>Leucrocota petersi</i>	<a href="#">A Mayfly</a>	Riparian/Streams	G2G3
<i>Bombus suckleyi</i>	<a href="#">Suckley Cuckoo Bumble Bee</a>	Shrubland	G2G3

\*Species links provided when available



All management recommendations assume that operators and land managers are following all applicable BMPs, laws, and regulations.

# MONTANA WYOMING BASIN ECOREGION

## G1 and G2 Species Habitat Management Guidelines



### INTRODUCTION

The Sustainable Forestry Initiative® (SFI) [2022 Standards](#) include requirements that promote and conserve Forests with Exceptional Conservation Value (FECV), which includes critically imperiled (G1) and imperiled (G2) species. This fact sheet summarizes the analysis of FECV habitat within this ecoregion and provides habitat management recommendations that would benefit species potentially found here.

### HABITAT TYPES

- Bare Rock/Talus
- Mixed Conifer Forest
- Shrubland

### BARE ROCK/TALUS MANAGEMENT

- Protect known locations
- Provide buffers

### MIXED CONIFER FOREST MANAGEMENT

- Protect known locations
- Retain legacy trees, stumps, and logs
- Retain large diameter trees with cavities or broken tops
- Leave skips and gaps with dense shrub component
- Retain large slash into piles

### SHRUBLAND MANAGEMENT

- Protect known locations
- Provide floral resources such as Asters, Chrysothamnus, and Cirsium
- Provide buffers



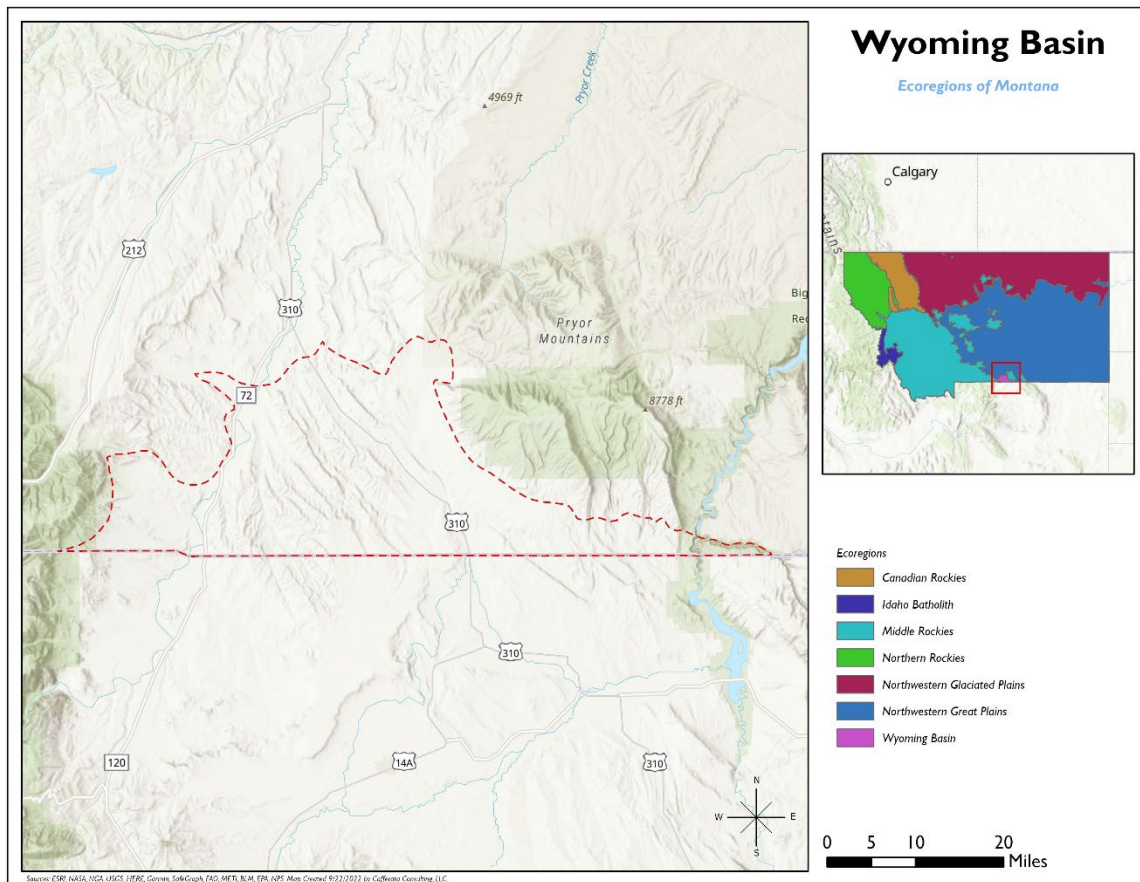
# MONTANA WYOMING BASIN ECOREGION

## G1 and G2 Species Habitat Management Guidelines



SCIENTIFIC NAME	COMMON NAME	HABITAT	STATUS
<i>Erigeron parryi</i>	<a href="#">Parry's Fleabane</a>	Bare Rock/Talus	G2G3
<i>Physaria lesicii</i>	<a href="#">Lesica's Bladderpod</a>	Mixed Conifer Forest	G2
<i>Bombus suckleyi</i>	<a href="#">Suckley Cuckoo Bumble Bee</a>	Shrubland	G2G3

\*species links provided when available



All management recommendations assume that operators and land managers are following all applicable BMPs, laws, and regulations.