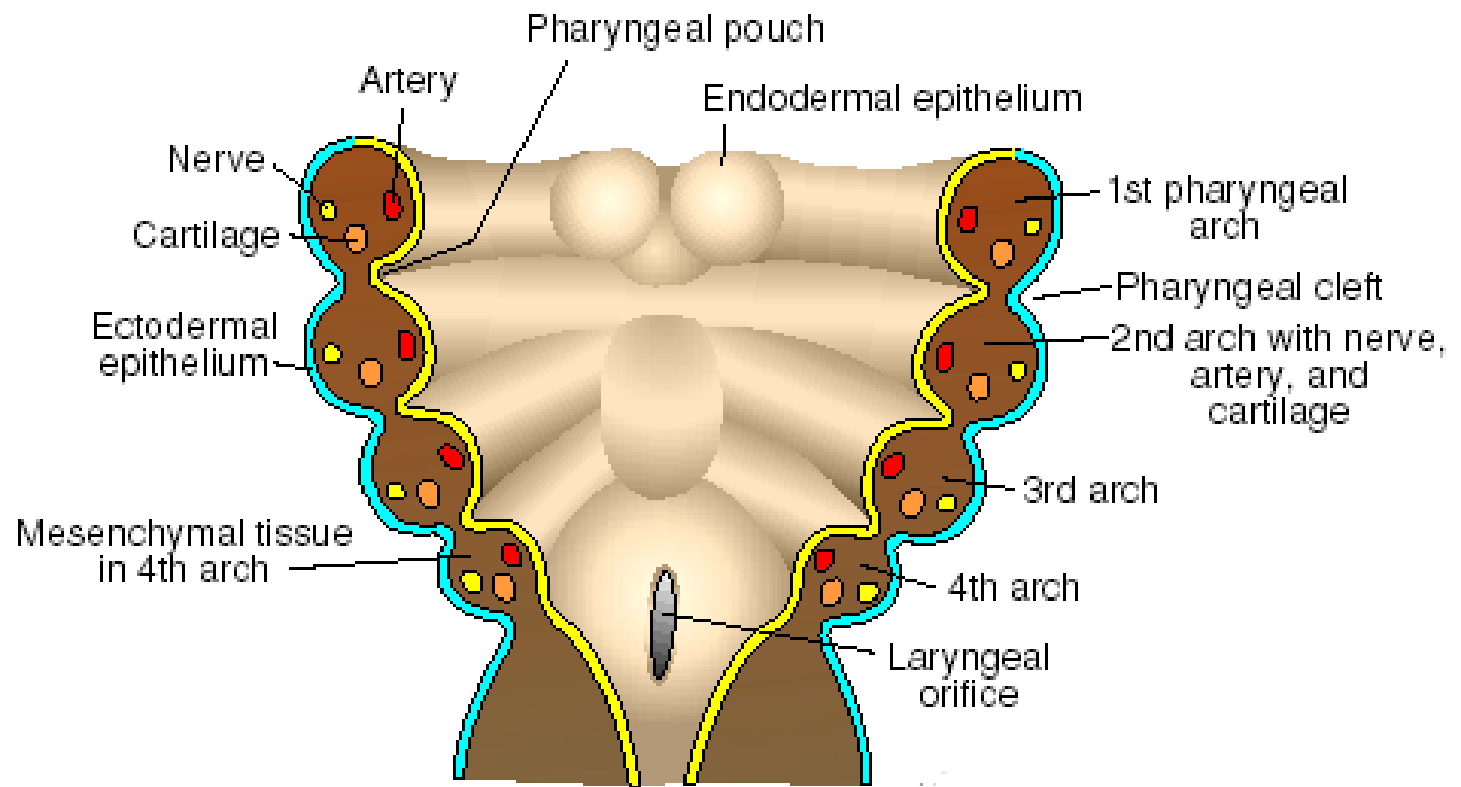
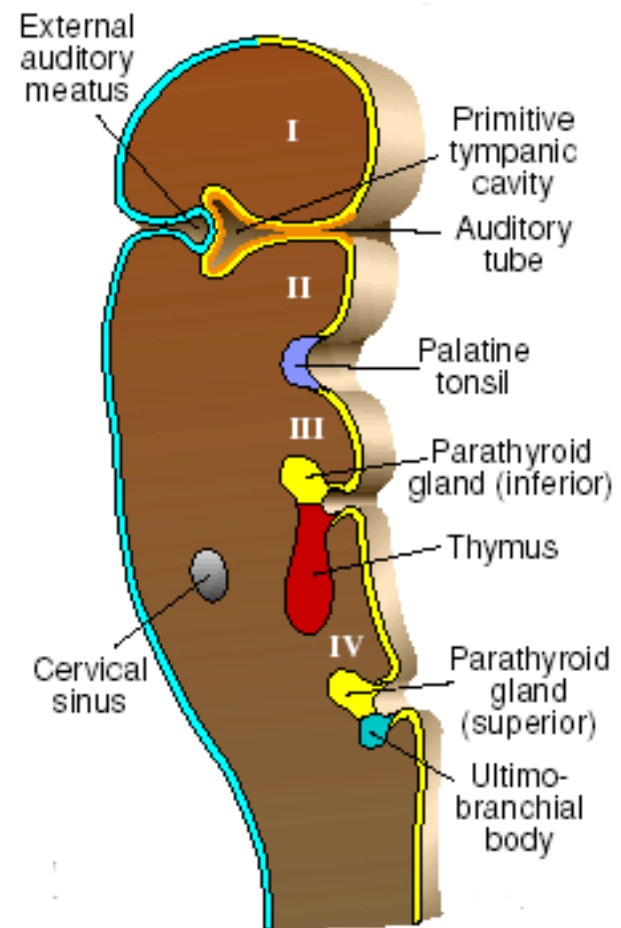
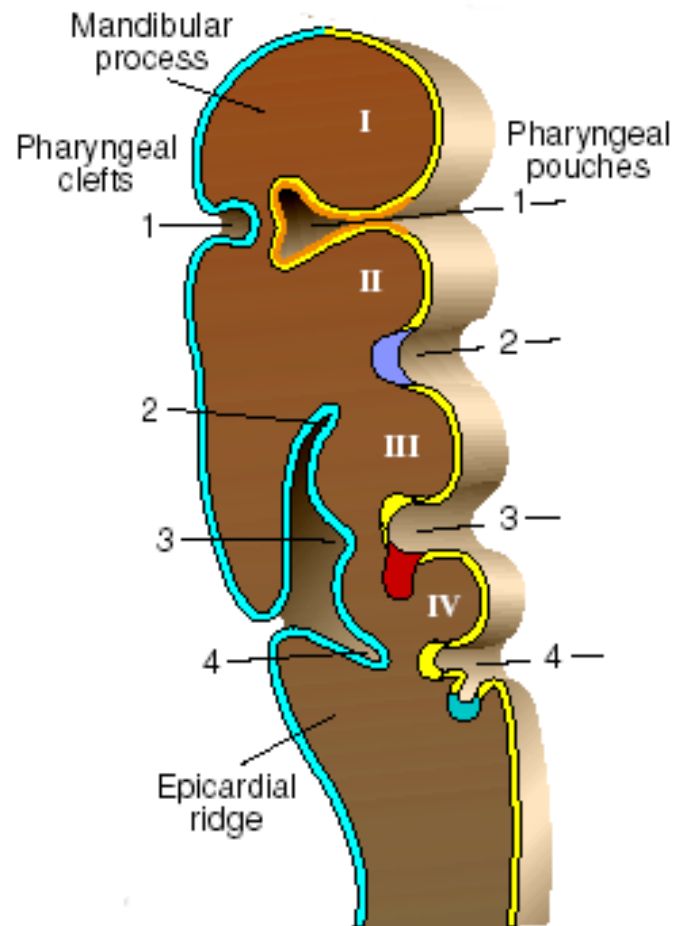
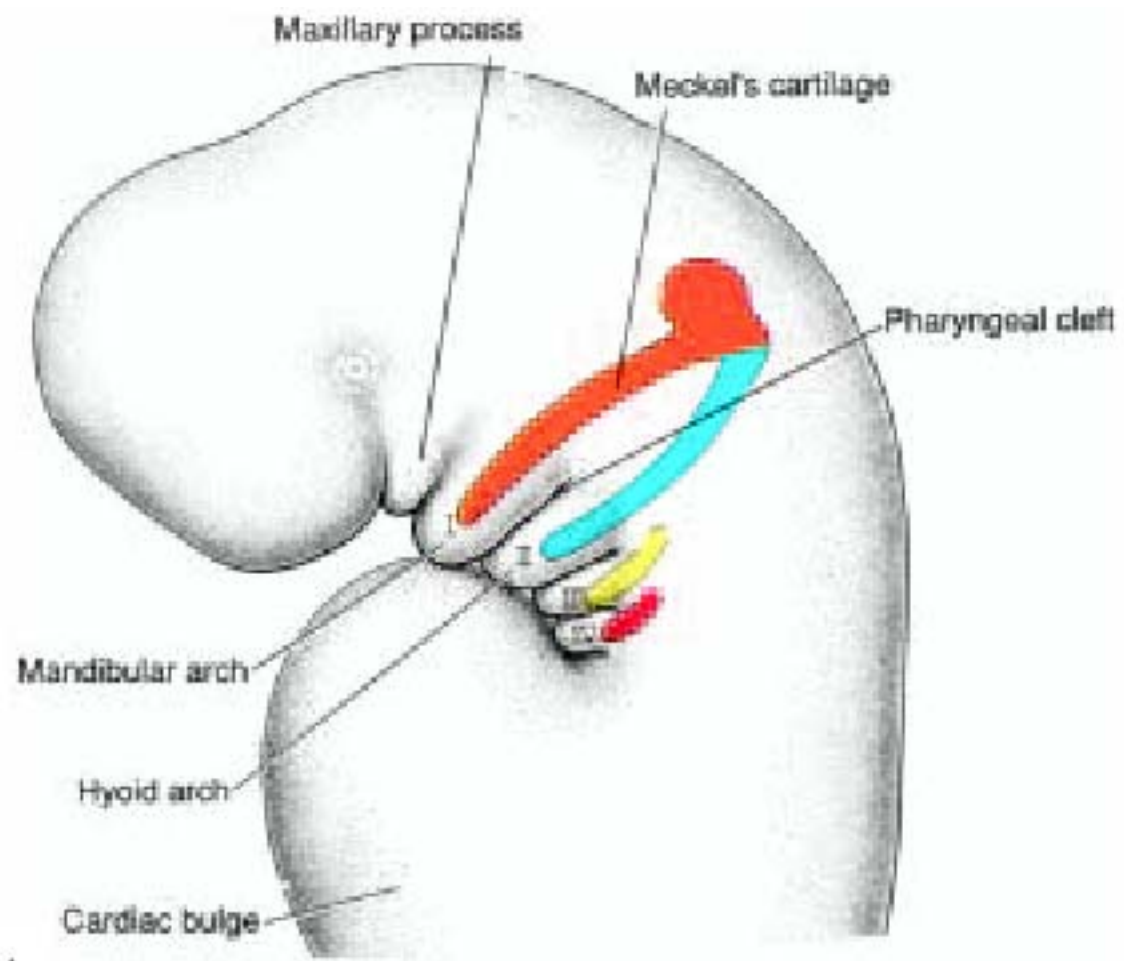


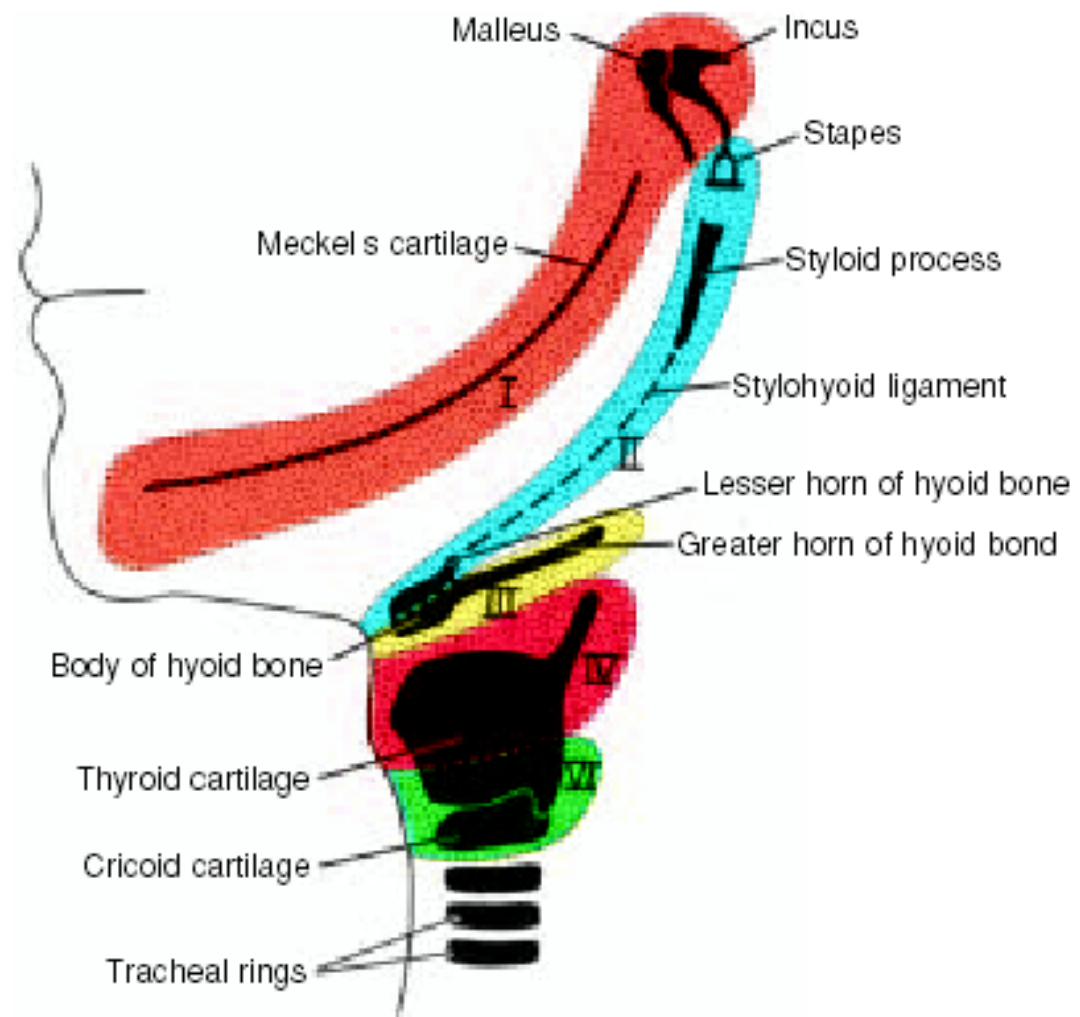
Each arch is supplied by a cranial nerve:

- i) Ist arch : Mandibular branch of trigeminal (Pretrematic nerve is chorda tympani branch of facial nerve).
- ii) IInd arch : Facial nerve (Pretrematic nerve is tympanic branch of glossopharyngeal nerve).
- iii) IIIrd arch : Glossopharyngeal nerve.
- iv) IVth arch : Superior laryngeal branch of Vagus nerve.
- v) VIth arch : Recurrent laryngeal branch of Vagus nerve.

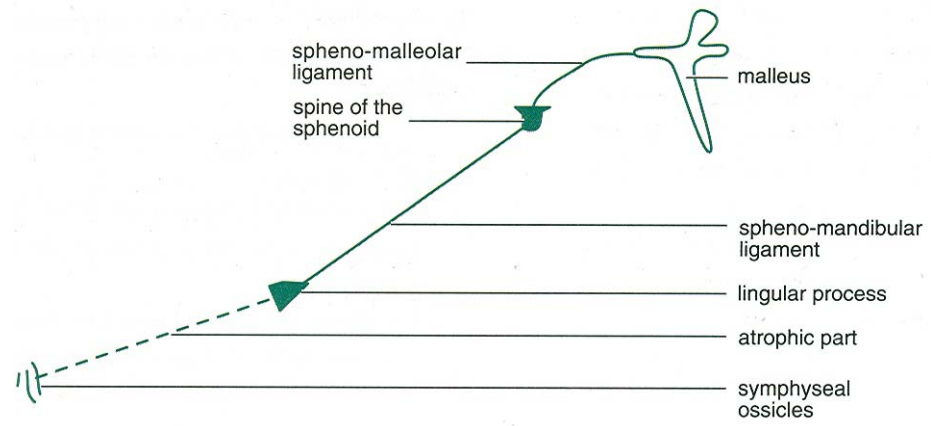


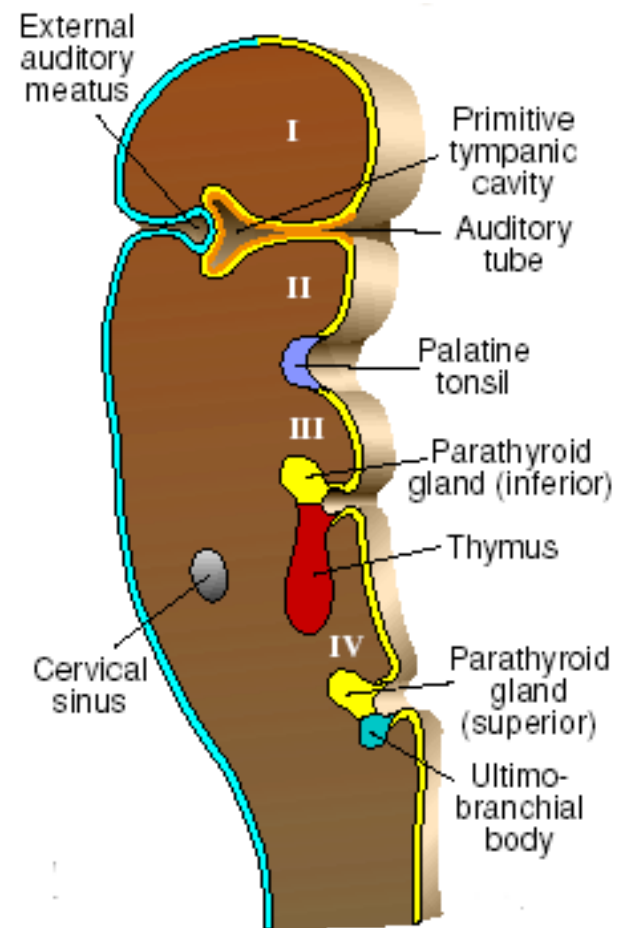
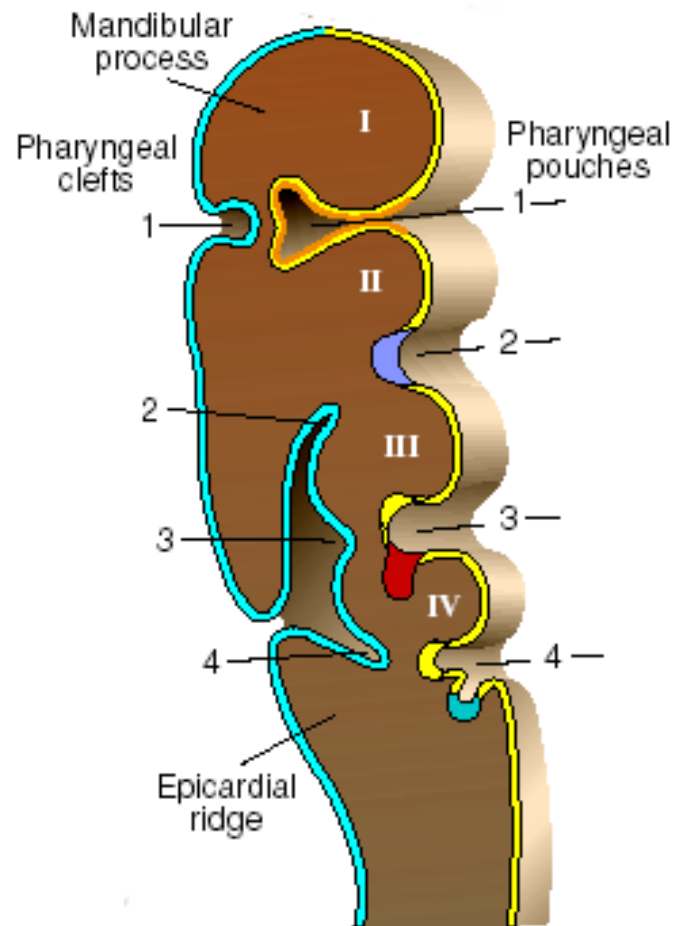


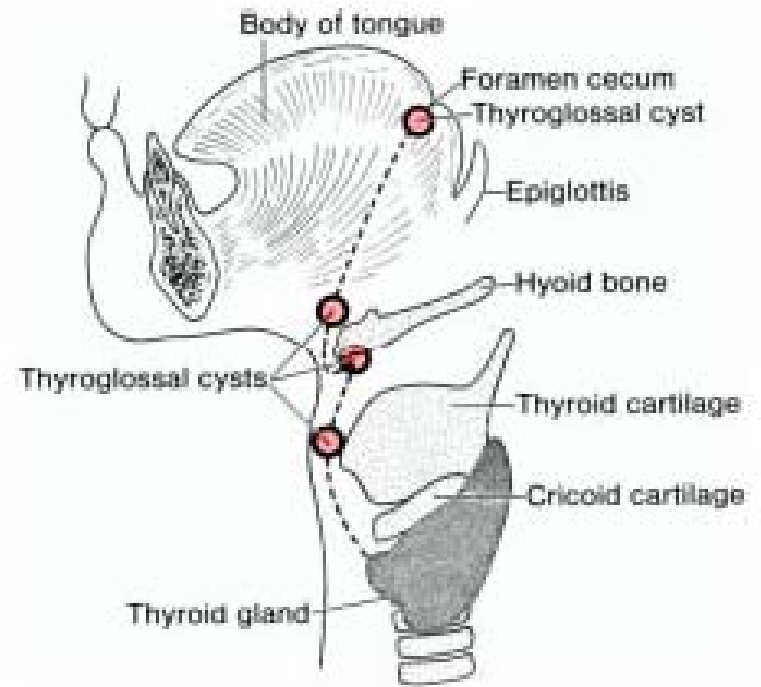
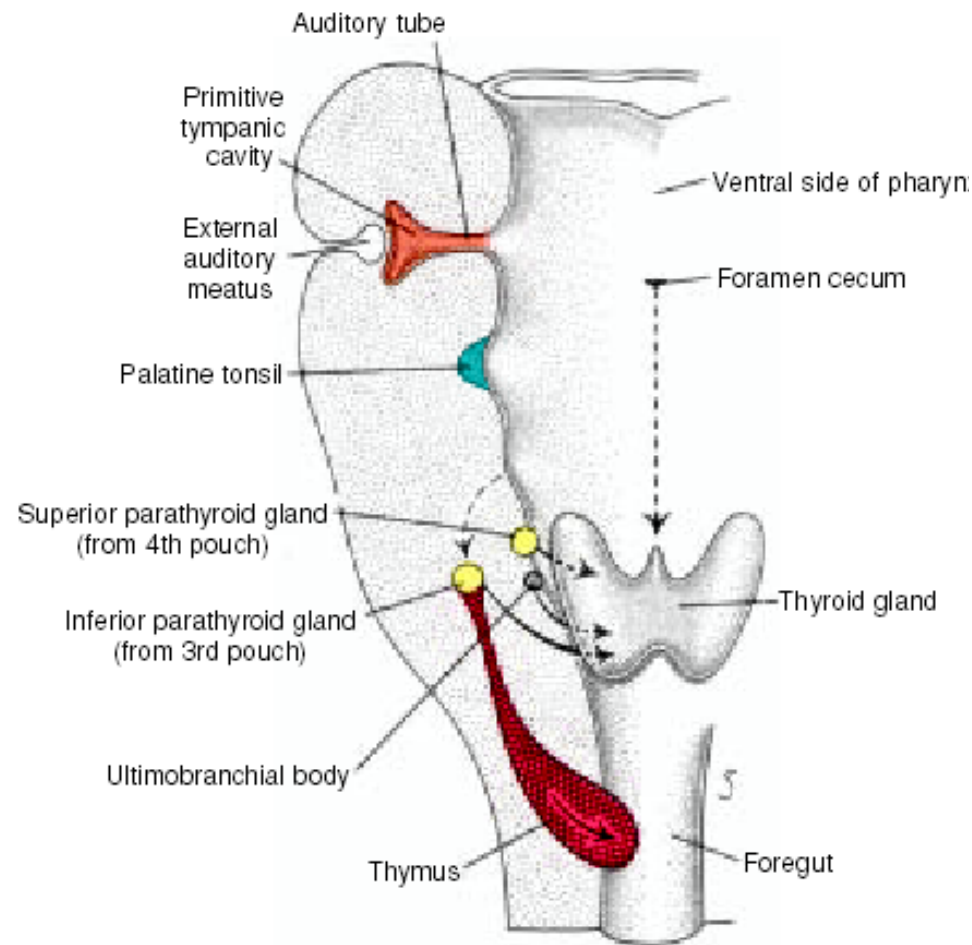




Pharygeal Arch	Nerve	Muscles	Skeletal Elements
I Mandibular (including its Maxillary process)	Mandibular Br of Trigeminal N (Preterminal nerve: chorda tympanine branch of facial)	Muscles of Mastication (temporalis, masseter, medial & lateral pterygoid) mylohyoid, anterior belly of digastric, tensor tympani & tensor palati.	Premaxilla, Maxilla, Zygomatic bone, part of temporal bone, Meckel's cartilage, mandible, malleus, incus, anterior ligament of malleus & sphenomandibular ligament.
II Hyoid (or Opercular)	Facial (Preterminal nerve: tympanic branch of glossopharyngeal)	Muscles of facial expression, fronto- occipitalis, platysma, buccinator, stylohyoid, posterior belly of digastric, stapedeus & auricular muscles	Stapes, styloid process, stylohyoid ligament, lesser horn & upper part of body of hyoid bone.
III	Glossopharyngeal	Stylopharyngeus	Greater horn & lower part of body of hyoid bone
IV	Superior laryngeal branch of vagus (Xth) nerve	Cricothyroid	Thyroid, arytenoid, cuneiform & corniculate cartilages,
VI	Recurrent laryngeal branch of vagus (Xth) nerve	All the other intrinsic muscles of larynx	Cricoid cartilage







Pharyngeal Pouches

- Four pairs
- First: Tubotympanic recess
Middle ear cavity
auditory tube
Tympanic membrane (inner lining)
- Second: Palatine Tonsil
- Third: Inferior parathyroid glands
Thymus
- Fourth: Superior parathyroid glands
Ultimobranchial body (parafollicular cells of
thyroid gland)

Applied Anatomy

- *Ectopic Thymic and Parathyroid Tissue*
- *Branchial Fistulas*
- *Neural Crest Cells and Craniofacial Defects*

**Treacher Collins syndrome
(mandibulofacial dysostosis)**

Robin sequence

DiGeorge anomaly

