

Golf Traveler

OFFICIAL MEMBER NEWSLETTER OF GOLF CARD INTERNATIONAL

FALL • 2005 • VOLUME 29 • NUMBER 3

KATRINA CLOSES GOLF CARD COURSES

New Orleans Affiliates Under Water

As expected, Hurricane Katrina wreaked havoc on several New Orleans golf courses, none worse than Golf Card affiliates Bayou Oaks in City Park and Eastover in eastern New Orleans, which appeared to sustain substantial property damage.

Through mid-September – almost two weeks after Katrina hit, three courses at Bayou Oaks and two courses at Eastover remained under flood waters.

“If we have to rebuild all three courses and the structures on the property, it could be upwards of \$25 million in golf-related damages alone,” Bayou Oaks general manager Gordon Digby said. “We couldn’t have had a worse scenario.

“Then there’s the wind damage. We might have a thousand trees down for all we know. I’m sure we’ll re-open eventually. Right now, we just don’t know. Hopefully, we’ll get some help from FEMA.”

The longer the courses at Bayou Oaks and Eastover remain under brackish water, a mixture of salt and fresh water, the less chance the turf has of surviving.

Eastover director of golf Jimmy Headrick said it doesn’t look promising for his two courses – Teeth of the Gator and Rabbit’s Foot – opening any time soon – if ever.

“Eastover took it as bad as any golf course in New Orleans because of its eastern location,” Headrick said. “We’re still under water; the cart barn, maintenance building, clubhouse, golf course, everything has been impacted. We have 130 golf carts under water.

“The next issue is going to be the Bermuda grass. It can’t live under that water for much longer than 10 days and we’re right there now. Eastover got it pretty rough.” *(continued on page 5)*



BEFORE



AFTER

DIGITAL GLOBE photos

These telling aerial shots of Bayou Oaks Golf Course, a Golf Card affiliate in New Orleans, reveal the water inundation sustained after Hurricane Katrina. The entire course disappeared under the ravaging waters. The area that appears darker in the After photo is all water.



Winter Break at Walden Lake

The weather may still be cooperative – even downright beautiful – in the northeast and midwest to get in your last rounds of the season. But soon enough, the cold temperatures and white stuff will have its say and golf will be relegated to the warm weather climates.

If you plan on traveling during the winter months, the Golf Card is accepted at hundreds of courses throughout Florida, Arizona, California and other playable destinations. And if you want to hook up with other Golf Card members for a great day of golf, food and fun, make plans to play in our annual Snowbird Reunion Tournament on Wednesday, January 25 at scenic Walden Lake Golf Club in Plant City, FL. *(continued on page 10)*

Small golf company's new driver straightens out shots, adds distance, wins contest.

Hits twice as accurately and ten yards longer than ten of the best.

Moveable weights offset swing flaws

YALESVILLE, CT-- Golfers often change shafts and grips to better match a club to their swing, but they have never been able to vary the clubhead. That's too bad, because their shots would improve immensely, if they could.



by Charlie Allen

The evidence comes from a test done by an independent firm on a driver developed by a small golf company in Connecticut. The new driver has moveable weights in its soleplate. Sixteen golfers of various handicaps were asked to position the weights in a way that would offset their biggest problem, and compare their shots with their own driver's.

On average, the new driver kept their tee shots twice as close to a centerline, and went ten yards farther than tee shots

Twice as accurate

with their own drivers. Their own drivers included ten of the best in golf.

Some of the results were dramatic. One golfer, an older man, straightened out his slice and went from 130-yard drives to 185-yard drives.

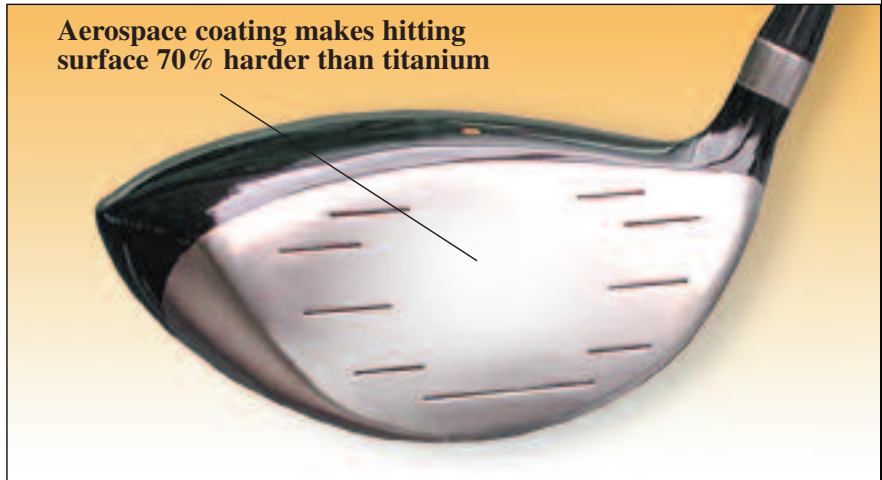
Another arranged the weights to compensate for his inside/out swing and went from 40 yards off the centerline with his regular club to 10 yards off with the new one. His regular club is a \$500.00 titanium driver.

A 3-handicapper hit drives that were so long and straight he stared at the club as if it were an alien being. He finally asked the test supervisor "Is this thing for real?"

The Director of Research for the company that developed the club explained the results to me this way.

"The magic behind the driver's accuracy comes from controlling its Moment of Inertia, the force that rotates the clubhead in the downswing. To do that, we put three small weights in the club's soleplate. If you tend to slice, you arrange them one way; if you tend to hook, you arrange them another way; if you tend to top the ball, you arrange them another way. You can

Aerospace coating makes hitting surface 70% harder than titanium



U. S. contest shows driver hits farther and straighter than ten of the best in golf.

even make the club fade or draw shots.

"It's the ultimate customization and it's beautiful to watch it work. Look at the faces on these guys. They can't believe it!

One guy wanted to buy two of the clubs 'right here and now,' one for himself and one for his business partner."

I asked about distance.

"Hitting a shot straighter automatically gives a golfer more distance, but there's another reason this one hits longer.

"We have exclusive use of a coating used in the aerospace industry that is twice as hard as steel and 70% harder than titanium. We fused it on the driver's hitting surface. No other club wallops a ball harder than this one. On average, it's giving these guys ten more yards, but it's helping some get 20% to 30% more.

Ten more yards

"It's a double whammy. The weights make the club twice as accurate as ten of the best drivers in the game, and the aerospace coating makes it hit ten or more yards farther. We are so confident in the club's ability we guarantee an average golfer will cut at least five strokes, or he may return it for a prompt refund.

"The weights are quick to adjust and the instructions for maneuvering them are so simple they fit on the shaft."

If my recent shopping is correct, there's a *triple* whammy here. Most oversize drivers like this one (it's 410 cc's) start at \$300.00 and run to \$500.00 or more. This one's price is far more reasonable.

The graphite-shaft model costs only \$129.00; the TurboTip® graphite-shaft model costs only \$149.00. The TurboTip® shaft has extra weight in the tip for more clubhead speed, and a big-butt grip for better swing control.

The driver and its matching 3-wood (same weighting system as the driver) cost only \$199.00 (graphite) or \$229.00 (TurboTip® graphite). S/h is \$14.95 for one or two clubs. Choose right or left-handed, regular or stiff flex. Both clubs come with handsome head covers.

Call **1-800-285-3900** or click **www.ngcgolf.com** anytime or day and ask for the CONDOR® SC driver and 3-wood. Or mail your name, address and a check (or cc number and exp. date) to NGC GOLF (Dept. TM-22), 60 Church Street, Yalesville, CT 06492. You can also fax your order to 203-284-1623. CT add sales tax. There's a 30-day money-back guarantee.



Movable shot-control weight

JUST IN...PREVIEWS OF THE *NEWEST* GOLF CARD COURSES

FLORIDA

Atlantis CC & Inn

Atlantis (7 miles from West Palm Beach)
561-968-1300; www.atlanticcountryclub.com
Golf Card fee: \$10 off

A three-star public course within the city limits of West Palm Beach, *Golf Digest* Places to Play calls Atlantis “a great place to play, especially for older golfers.” Wide fairways and large greens offer plenty of room though clusters of trees, elevated greens, water hazards and numerous bunkers keep things interesting. Known for its smooth putting surfaces.

Silverthorn Country Club

Brooksville (35 miles from Tampa)
352-799-2600; www.silverthornclub.net
Golf Card fee: \$10 off

Renowned Florida architect Joe Lee has masterfully mixed links-style expanses and traditional, parkland tree-lined holes on this 3½ star layout. With rolling terrain, unpredictable Florida Gulf Coast winds and no less than 96 strategically-placed bunkers, Silverthorn plays to its 131 slope rating.

Cocoa Beach Country Club

Cocoa Beach
321-868-3351; www.golfco-coabeach.com
Golf Card fee: Brevard County rate (Dec-Apr);
Cocoa Beach City rate (May-Nov)

Surrounded by the Banana River and incorporating 17 lakes throughout 27 holes, water is the dominating feature at Cocoa Beach Country Club.



Atlantis Golf Club near West Palm Beach is a three-star course whose generous fairways appeal to all golfers, especially seniors.

Deer Creek Golf Club

Deerfield Beach (6 miles from Ft. Lauderdale)
954-421-5550; www.deercreekflorida.com

Golf Card fee: 20% off

Designed by world-renowned architect Arthur Hills, Deer Creek Golf Club is a 3½ star design which recently benefited from a \$2 million renovation that upgraded greens, bunkers, tees, fairways, irrigation and drainage throughout the course. Undulating and rolling landscape is unique to South Florida.

Eagle Marsh Golf Club

Jensen Beach (45 miles from West Palm Beach)
772-692-3322; www.eaglemarsh.com
Golf Card fee: 20% off

Well-maintained Tom Fazio design called a “little-



A \$2 million renovation has vastly improved Deer Creek Golf Club, a worthy Arthur Hills layout just outside Fort Lauderdale.

known” jewel by *Golf Digest*, which rated it 3½ stars. Beautifully sculpted holes and excellent greens.

Harbor Hills Country Club

Lady Lake (45 miles from Orlando)
352-753-7711; www.harborhills.com
Golf Card fee: \$35 (Sept-Dec); \$49 (Jan-Apr);
\$28 (May-Aug)

Overlooking Lake Griffen in Central Florida, Harbor Hills is a 4-star course with beautiful scenery, unique elevation changes and well-groomed greens.

Babe Zaharias Golf Course

Tampa
813-631-4374; www.babazahariasgc.com
Golf Card fee: \$23-32

Just 20 minutes from downtown Tampa, this relatively short 6,244-yard course is ideal for seniors. In fact, Babe Zaharias hosts the Tampa City Men’s and Women’s Senior Amateur Championship.

Sandridge Golf Club

Vero Beach
(70 miles from West Palm Beach)
772-770-5000;
www.sandridgegc.com
Golf Card fee: \$20.50-\$31

Two well-designed courses by Ron Garl. The 4-star Lakes course is called a “great bargain” by *Golf Digest*, “a nice layout for seniors.” The Dunes is rated 3½ stars and offers challenging target golf. ♪



With secluded holes and plush conditions, Eagle Marsh in Jensen Beach has a private course look and feel.

CLUBHOUSE VIEW

Bruce Hoster

What's New?

We've added some great new features to our website that I want you to know about. Perhaps the biggest addition is course reviews. We've asked members like you to share course ratings with us over the past year, and we now have nearly 2,000 reviews. If you search for a golf course and there's a review, you'll see a summary of the member ratings from one to five stars. And if you're logged in to the website as a member, you can read other members' reviews. I would encourage each of you to use this feature to enter reviews and comments on Golf Card courses you play. This can be most helpful for other members planning their next round.

Also new to the website are some improvements to the course directory. When you search a state or zip code for courses, the list of courses you receive will now include a star designation for any course that has a review.

Also the course lists will be sortable by each column heading, so you can sort the courses alphabetically by course name, city or state or by number of holes. Just click on the heading for how you want to sort the courses. This should make finding courses much easier for all members.

The other improvement is that the course search page now allows you to search by course name. So if you know the name of a course but aren't sure of the city or state, you can put in the course name and see a list of Golf Card courses with that name. We know from our web traffic reports that the course directory is the most used feature on our site, and we hope these features will make searching easier for you.

These website improvements were actually suggested by members like you. So if you have ideas on how we can make the website or any other aspect of Golf Card better, just drop me a note at bhoster@golfcard.com. I do listen, and we do react to your comments.

Gift Memberships

Since you're a golfer, you probably have lots of golfers on your holiday gift list. Friends, family, coworkers and others. Now you can give them the perfect holiday gift, and take care of all your shopping with just one phone call. Golf Card makes it easy with the return of our special holiday gift offer. You can give a gift Golf Card membership for only \$39, a special price available only to Golf Card members. Your gift will be sent during the holidays and will indicate to the recipient that the gift is from you. For more information see the back cover of this issue or call our Member Service Group at 1-800-440-3673. Golf Card gift memberships keep giving year-round and will be appreciated by all the golfers in your life.

Tee It Up With Golf Card in Florida

January will see the return of our popular Snowbird Reunion golf tournament. We will play one of our favorite courses, Walden Lake Country Club, located in Plant City, Florida. The tournament will commence with a noon shotgun on Wednesday January 25, and will be played as a four-person handicap scramble. You can register as an individual player, a twosome or a foursome.

The price of \$65 per person includes golf, cart, range balls, hole prizes, team prizes and a wonderful awards banquet dinner featuring barbecued chicken and ribs. For more information see the article beginning on the cover of this issue, or to sign up call our Golf Card Tournament Hotline at 877-288-4802. I recommend you sign up early, as our two previous member tournaments sold out more than a month prior to the events.

Have a wonderful holiday season, and I hope to see you at Walden Lake Country Club in January.



President, Golf Card
bhoster@golfcard.com

GOLF CARD

President • *Bruce Hoster*
bhoster@golfcard.com
National/Eastern Sales Manager
Doug Woods
dwoods@golfcard.com
Central Sales Manager • *Sean Corrigan*
scorrigan@golfcard.com
Marketing Manager • *Kerri Luther*
kluther@golfcard.com

COURSE OPERATIONS

Eastern Coordinator • *Johanna Oland*
joland@golfcard.com
Central/Western Coordinator • *Glenda Henson*
ghenson@golfcard.com
800-522-9232

MEMBERSHIP SERVICES

Golf Card
64 Inverness Drive E.
Englewood, Colorado 80112
800-321-8269
www.golfcard.com
email: info@golfcard.com

GOLF TRAVELER

Publishing/Editorial Director • *Valerie Law*
vlaw@affinitygroup.com
Editor • *Ken Cohen*
KCEandP@aol.com
Art Director • *David Walker*
mhew@comcast.net

EDITORIAL OFFICES

2575 Vista del Mar Drive
Ventura, California 93001
805-667-4100

ADVERTISING OFFICES

64 Inverness Drive E.
Englewood, Colorado 80112
800-522-9232
Fax 877-439-1586

Golf Traveler (ISSN 0191-717X) is published quarterly by Golf Card International Corporation, 64 Inverness Drive E., Englewood, Colorado 80112. Editorial offices are at 2575 Vista del Mar, Ventura, California 93001. Subscriptions are \$12 for members, included as part of annual membership fees. Cover rate is \$3. Annual fee is \$75 for a single membership and \$120 for a twosome. Periodical postage is paid at Englewood, Colorado, and additional mailing offices. Canadian Publication Sales Agreement No. 1960466.

POSTMASTER: Send address changes to *Golf Traveler*, attn: Golf Card Membership Services, P.O. Box 7022, Englewood, Colorado 80155-7022. *Golf Traveler* assumes no responsibility for unsolicited manuscripts or artwork. ©2005 by *Golf Traveler*. All rights reserved. Contents may not be reprinted or otherwise reproduced without written consent of the publisher.

PRINTED IN THE U.S.A.



Free Subscription to Links Magazine

Members of Golf Card can now receive a free one-year subscription to *Links Magazine* as part of their membership package. This is an exclusive benefit that Golf Card has arranged with *Links*, so there's no financial obligation and no strings attached. No credit card or phone numbers are required. All you need to do is fill out the insert card bound in this issue of *Golf Traveler* and mail it back postage free. Or you can click on www.linkssubscription.com/gci. Either way, once you fill out the card or fill out the fields online, seven issues of *Links* will be on their way. This is a \$35 value — free for Golf Card members!



Links is America's most beautiful golf magazine — a vivid, easy-to-read publication offering detailed coverage of prime golf destinations and real estate, breathtaking photography of the world's most inspired courses and insightful columns by legendary journalists Ben Wright and George Peper. As the magazine promotes itself, "If golf is your life, *Links* will put some life in your golf."



COURSE REVIEWS

As mentioned in Clubhouse View, members can now access course reviews on the Golf Card website. This is a helpful addition that will allow members to read what other members think about a particular course. About 2,000 courses have been reviewed. Simply go to our website, www.golfcard.com, click on Course Directory, and those courses earmarked with a star will have a rating and review.

Here are some samples of recently reviewed courses that might help you plan your late-fall and winter golf:

FLORIDA

Diamondback Golf Course

Haines City

863-421-0437; www.diamondbackgolfclub.net

Golf Card fee: Oct 17-Jan 16 wklys \$30, wknds \$35, Jan 17-Apr wklys \$50, wknds \$55, May-Oct 16 wklys \$20, wknds \$25

John: "Demanding course in great condition. Accuracy a must! Play this course if in the Orlando area."

The Golf Club at Cypress Head

Port Orange

386-756-5449; www.cypressheadgolf.com

Golf Card fee: Jan-May \$45, June-Aug \$25, Sep-Dec \$35

Josh: "Living in the Daytona area, this is by far my favorite local course. I have played the LPGA courses, and this is just as good for half the cost. The landscaping and course maintenance are impeccable. Very nice place, I will return."

Eric: "Great course and great people."

Rock Springs Ridge Golf Club

Apopka

407-814-7474; www.rockspringsridge.net

Golf Card fee: \$25 (May-Oct.); \$5 off (Nov.-Apr.)

Curtis: "Quite playable yet challenging. Do not get lost at the views, keep playing golf. The elevation changes are a welcome change from coastal flatland golf."

PENNSYLVANIA

Stone Hedge Championship Golf Course Factoryville

570-836-5108; www.stonehedge-golf.com

Golf Card fee: Mon-Thu \$29, Fri-Sun \$35

John: "This has to be the best golf course in northeast Pennsylvania. The views are majestic. The course is always in perfect condition. Experience golf's best play."

Dean: "This course is a challenging course with a beautiful layout. I would definitely recommend [Stone Hedge] to anyone who likes a well-kept course for a reasonable price."

Ben: "This is a beautifully laid out course. It's a tough course but a very enjoyable place to play."

Southmoore Golf Course

Bath

610-837-7200; www.southmooregolf.com

Golf Card: \$28

Tom: "Course is very player friendly. Enjoyed it a lot."

Daniel: "What an enjoyable place to play ... people around here sure take pride in their courses ... plus thanks [Golf Card] for making it affordable for us guys."

Del Mar Golf Course

Wampum

724-758-9499; www.delmargolf.com

Golf Card fee: CGF

Martin: "One of the better public golf courses in the area."

(continued from cover)

Biloxi, Gulfport Courses Devastated by Wind

As of mid-September, there was still no phone contact with Golf Card affiliates Dogwood Hills GC and Southwind Golf Course in Biloxi; Great Southern Golf Course in Gulfport; Pass Christian Isles GC in Pass Christian Isles; Bridges GC at Casino Magic in Bat Saint Louis and Gulf Hills GC and St. Andrews GC in Ocean Springs.

News reports showed extensive wind and wave damage to the area, with casinos being literally moved and entire neighborhoods wiped out. Golf courses are sure to be closed for some time.

Alabama Courses Starting To Open

Golf Card courses in Mobile, Alabama, another heavily-hit area from Katrina, started opening in mid-September. Spring Hill College GC in Mobile is open with all 18 holes in play.

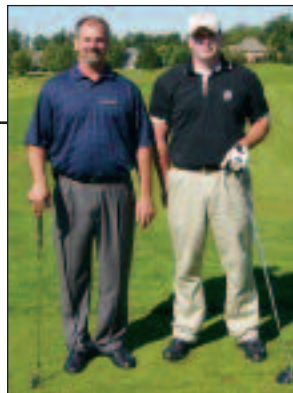
The front nine at Citronelle Muni GC in Citronelle is open, but the back nine remains closed after 82 trees fell on the course. A community day on September 9 when local golfers volunteered to help clean up the debris accelerated the clean-up process, but there was still no timetable on the full 18 holes opening.

Calls to Isle Dauphine GC in Dauphin Island, Bay Oaks GC in Irvington and The Linksman GC in Mobile went unanswered, suggesting those courses are still closed. ♪



The biggest part of my game that needs improvement is driving. Every hole plays longer when your drives never hit the fairways. At times, in the middle of my round, I start teeing off with a 2-iron because I know it's the only way I can keep it in play. I have taken advice from a lot of people and it always seems to be a temporary fix. Then old habits kick in and my driving goes to the way it was. Most people want to hit it farther off the tee; I want to hit it straighter. Can you HELP??

Ryan Millett, Area Sales Manager
Pennville, Indiana



PGA professional Perry Dotson of The Players Club Woodland Trails (left) with Golf Card member Ryan Millett prior to Ryan's one-on-one lesson arranged by Golf Card.

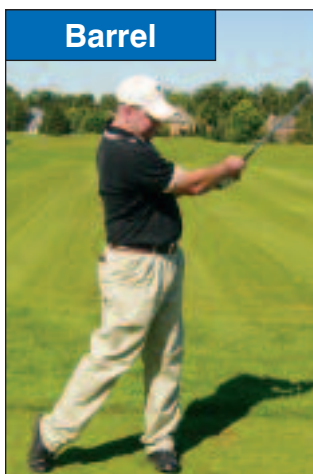
Ryan has been a Golf Card member since 1997 and plays two or three times a week. He shoots in the high 40s, low 50s for nine holes. To help Ryan with his swing, we set him up to take a lesson from Perry Dotson, head golf professional at The Players Club Woodland Trails in Yorktown, Indiana — a Golf Card affiliate course. Dotson learned his trade from ex-PGA Tour player Bill Nary, whose seven putts for nine holes in the 1952 El Paso Open is still a PGA Tour record. Perry is a PGA professional with 15 years teaching experience.

After watching Ryan take some swings, Perry pinpointed why Ryan wasn't hitting the ball straight — he wasn't getting his weight to his left side. Whether he hit it left or right, Ryan was hanging on his right side at impact, swinging from his right foot. If he released the club early, the ball would hook left. If he held on and didn't release at all, he would slice to the right. There was no consistency to his club release, largely because his weight was not properly shifting.

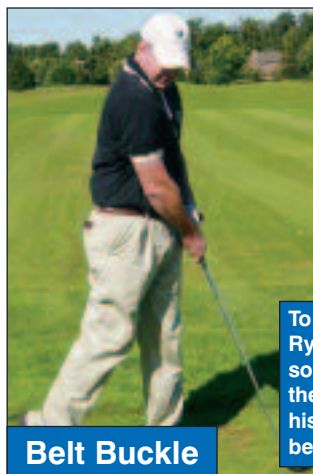
So Perry thought if Ryan could get to his left side every time, he could release the club at the right time, be more consistent and straighten out his ball flight.

DRILLS:

To help Ryan get his weight to his left side after impact, Perry instructed Ryan to swing like he was in a barrel — to turn the shoulders on the takeaway, swing down through the ball, and finish on his left side. The key to a proper weight shift is to not go too far to the right on the backswing and too far to the left on the follow-through. The barrel drill has been used for many years to teach



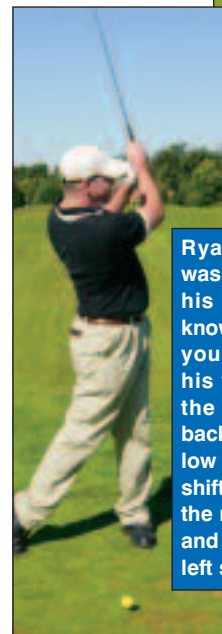
Barrel



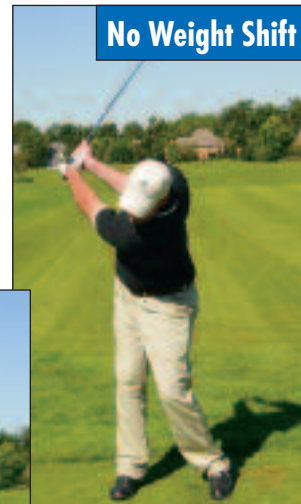
Belt Buckle

players to achieve the proper weight shift by simply turning their shoulders and not swaying. Many high handicap players make an exaggerated weight shift and lose their balance. Perry emphasized to Ryan throughout the lesson the importance of maintaining **BALANCE** throughout the swing.

To undo the reverse pivot, Perry had Ryan swing like he was in a barrel so that his shoulders would turn on the takeaway and he would finish his swing on his left side — with his belt buckle facing the target.



Ryan's basic swing problem was a lack of weight shift from his left side to his right, also known as a reverse pivot. Here you can see how Ryan keeps his weight on his left side on the backswing and then falls back on his right side on the follow through. The proper weight shift would have the weight on the right side on the backswing and then rotating through to the left side after impact.



No Weight Shift

Ryan Millet

Age:26
College:Graduate of Purdue University
Family:Wife, Heather
Pets:Two dogs, Sadie and Sandy
Occupation:Area Sales Manager for a genetics company in the farming industry
Golf Card Member: ..Since 1997
Rounds per week: ...2-3
Reasons for playing: .."To have fun and relax."
Favorite golfer:Phil Mickelson

Perry Dotson

Occupation:Head golf professional at The Players Club Woodland Trails (Yorktown, IN)
Phone:(765) 759-8536
Website:www.theplayersclubgolf.com
E-mail address:pdotson@pga.com
Background:Perry learned his trade in the Navy in San Diego, CA at Bonita Golf Club
Mentor:Bill Nary (former PGA Tour player who still holds record for fewest putts for nine holes – 7 at the 1952 El Paso Open).
Teaching experience: ..15 years
PGA member:3 years
Years in golf business: ..40 plus
Lesson rate:\$40 for half hour



Perry also had Ryan hold the club with both hands, one on the butt and one down near the hosel and work on turning his shoulders on the takeaway and then transferring his weight to the left side by turning his belt buckle to the target. The point of this drill was again working on weight transfer from the right side to the left side while releasing the club.

After working on these drills, Ryan's balance and tempo were noticeably better and he started to hit several shots down the middle with a slight draw.

Perry concluded the lesson by giving Ryan a few quick pre-shot tips on the grip and ball position.



Grip Drill

Perry emphasized to Ryan the importance of a proper grip and how he should go through a grip routine before each shot.

GRIP DRILL

Hold the club toward the butt end and try to balance the club in your left index finger. Then go ahead and grip the rest of the club before striking the ball.

BALL POSITION DRILL

When taking your stance, start with your feet together and then separate them so the ball is positioned correctly.

MEMBER'S TEE is a new benefit that allows Golf Card members to write in with swing problems or flaws. We will review these submissions and choose one to be addressed in each issue of Golf Traveler. It's our intention to have experienced PGA professionals at Golf Card-affiliated courses provide in-person, step-by-step lessons — with detailed photos — to help correct the swing problem or flaw.

So if your swing or some aspect of your game is letting you down, simply e-mail us at memberstee@golfcard.com with the problems you're experiencing. Please include a brief description of what your swing tendencies are and what you'd like to see corrected. We look forward to your submissions and helping in any way we can.



Scenic Mountain Resort Senior Golf Events

Our scenic Blue Ridge Mountain resort is home to a beautiful golf course with bent grass greens. In addition to the course, there is a large driving range, two practice putting greens, and two practice chipping areas.

Rates at the Inn include 3 meals daily. Other amenities include tennis courts, a lake, trails, gardens, and entertainment.

There are two 5-Day Senior Golf Events each year in June & September. Call for dates.

HIGH HAMPTON INN & COUNTRY CLUB

CASHIERS, NORTH CAROLINA
info@HighHamptonInn.com

1-800-334-2551

Member to Member allows Golf Card members to share with other members tips, tales and tidbits from their golf travels and receive \$50! We encourage members to write us at membertomember@golfcard.com with their experiences, and if we publish your submission you'll receive \$50.

Bi-Focal Point

Use your bifocals for you, not against you. Simply adjust your head until the ball blurs. Your head is then up, and your chin won't get in the way of your backswing.

William G. Hime
Northbrook, IL



The State of My Game

I recently traveled to Alaska in an effort to play golf in the 50th state, the last state on my golf list. It was a long drive from Whitehorse, Yukon on the Alaska Highway to Fairbanks, but I got to play a course that billed itself as the most northern course in America. I managed to

play on all three of Fairbanks' golf courses in one day due to the summer solstice, which resulted in enough light to play until almost midnight.

On the trip back, I managed to play another very northern course called the Top of the World Golf Course in Dawson City, Yukon. It was listed in the Golf Card Directory, which I find very informative and helpful. In February I played in Hawaii at two courses listed in the Directory, Coral Beach and Luana Hills, and found them both easy to find due to their listing.

Looking forward to playing many other courses listed in the Golf Card Directory.

Ed Krayewski
Niagara Falls, Canada

These members just earned \$50 from Member to Member, a new benefit in 2005 that allows Golf Card members to share information with other members and ask questions about using the Golf Card.

ACE PLACE

Congratulations to Golf Card members who have had a Hole-In-One in 2005 and received the new Golf Card ACE Place Hole-In-One certificate. If you have made a hole-in-one in 2005, email us the details (course, hole, yardage, club used) at aceplace@golfcard.com or call our Tournament hotline toll free at 1-877-288-4802.

Thomas Ayres, Rutherford College, NC – Orchard Hills GC (Granite Falls, NC), 3rd hole, 174 yards, 6-iron. June 24, 2005.
Douglas Barclay, Huntsville, AL – Meadow Lake GC (Columbia Falls, MT), 16th hole, 106 yards. June 4, 2005.
Bob Beattie, Marine City, MI – Leaning Tree GC (Wales, MI), 3rd hole, 124 yards, 7-iron. June 27, 2005.
Joanna Bechanko, Bay City, MI – Bay County GC (Bay City, MI), 16th hole, 138 yards, 5-wood. June 1, 2005.
Phil Bohr, Pittsburgh, PA – Spring Valley GC (Mercer, PA), 11th hole, 139 yards, 5-iron. July 2005.
Gerry Brenner, Tucson, AZ – Trini Alvarez El Rio GC (Tucson, AZ), 4th hole, 181 yards, 7-wood. March 24, 2005.
Gene E. Brubaker, Greenville, OH – Union City CC (Union City, OH), 2nd hole, 130 yards, 8-iron. June 20, 2005.
Michael Burke, West Lafayette, IN – Rocky Ridge GC (Crawfordsville, IN), 18th hole, 132 yards. Spring 2005.
Ralph Bussard, Middletown, MD – Loudoun G&CC (Percellville, VA), 7th hole, 179 yards, 5-wood. April 20, 2005.
Carmine Cagnetti, Temple, PA – Green Acres GC (Bernville, PA), 9th hole, 135 yards, 9-iron. July 24, 2005.
Marilyn J. Campbell, Rochester, MN – Gopher Hills GC (Cannon Falls, MN), 6th hole, 124 yards, 7-wood. July 7, 2005.
James Carr, Oskaloosa, IA – Harvest Point GC (Oskaloosa, IA), 3rd hole, 150 yards, 7-iron. July 28, 2005.
John Chemello, Schnecksville, PA – Patriots Glen GC (Elkton, MD), 13th hole, 120 yards, 8-iron. July 5, 2005.
Robert J. Churchill, Columbia, MO – Stone Hedge GC, 7th hole, 190 yards, 5-wood. July 16, 2005.
Janet Cochran, Caro, MI – The Timbers GC (Tuscola, MI), 5th hole, 105 yards, 7-iron. August 7, 2005.
Paul Coffman, Irwin, PA – Irwin CC (Painterstown, PA), 4th hole, 151 yards, 9-wood. June 24, 2005.
Robert Cooper, Walhonding, OH – Black Diamond GC (Millersburg, OH), 5th hole, 110 yards, 7-iron. July 11, 2005.
Nancy DeYoung, Grandville, MI – McGuires Spruce Course (Cadiillac, MI), 3rd hole, 168 yards. June 3, 2005.
Richard Drey, Shellsburg, IA – The Meadows GC (Dubuque, IA), 14th hole, 152 yards, 6-iron. August 1, 2005.
John Duffy, Levittown, PA – Dunegrass GC (Old Orchard Beach, ME), 13th hole, 161 yards, 7-iron. August 8, 2005.
JoAnne Edson, Apalachin, NY – Walden Oaks CC (Cortland, NY), 15th hole, 140 yards, 7-wood. Summer 2005.
Tom Fah, Cascade, IA – Manchester GC (Manchester, IA), 7th hole, 163 yards, 21-degree hybrid club. August 2, 2005.
Jim Findlay, Antigo, WI – Bass Lake CC (Antigo, WI), 8th hole, 154 yards, 9-wood. June 14, 2005.

Dennis Fornarucci, Wayne, NJ – Passaic County GC (NJ), 13th hole, 165 yards, 4-iron. July 31, 2005.
Max Frickey, Grover Beach, CA – Rancho Maria GC (Santa Maria, CA), 3rd hole, 155 yards, 9-wood. August 19, 2005.
Walter Fry, Nazareth, PA – Riverview CC, 4th hole, 120 yards, 8-iron. May 27, 2005.
Jeff Gmys, Paterson, NJ – Glen Brook GC (Stroudsburg, PA), 7th hole, 126 yards, 9-iron. August 19, 2005.
Bernard Gonda, Las Cruces, NM – Sonoma Ranch GC (Las Cruces, NM), 3rd hole, 110 yards, PW. June 13, 2005.
Paul Gruzski, Peckville, PA – Wyoming Valley CC (Wilkes Barre, PA), 15th hole, 189 yards, 3-wood. July 21, 2005.
Chuck Hammerstad, San Jose, CA – Santa Theresa GC (San Jose, CA), 8th hole, 85 yards, 9-iron. Spring 2005.
Margaret Hawley, Chillicothe, IL – Arrowhead CC (Chillicothe, IL), 13th hole, 114 yards, 7-wood. June 3, 2005.
Marjorie Hay, Worthington, OH – Shamrock GC (Powell, OH), 3rd hole, 125 yards, 9-wood. June 8, 2005.
Jim Healey, Frostburg, MD – World Golf Village Slammer/Squire (St. Augustine, FL), 2nd hole. June 5, 2005; Maplehurst CC (Lavale, MD), 10th hole, 175 yards, 5-iron. August 10, 2005.
Hank Heynen, Delton, MI – Yarrow GC (Augusta, MI), 15th hole, 168 yards, Rescue. September 8, 2005.
Ben Holdsworth, Pittsburgh, PA – Monterrey Yacht & CC, 7th hole, 152 yards, 5-iron. March 26, 2005.
Russell Hutchison, Marion, IN – Shady Hills GC (Marion, IN), 13th hole, 190 yards, 3-wood. July 8, 2005.
Harold Jablonski, Palm Harbor, FL – Highland Lakes Blue, 4th hole, 161 yards, 5-iron. July 2005.
John Kadimik, Hopatcong, NJ – Tamiment GC (Tamiment, PA), 7th hole, 135 yards, 3-wood. September 1, 2005.
Edward Kelly, Tobyhanna, PA – Pocono Farms CC (Tobyhanna, PA), 3rd hole, 128 yards, 9-iron. August 2, 2005.
Ron Kiesla, Vero Beach, FL – Sandridge GC (Vero Beach, FL), 11th hole, 133 yards, PW. July 25, 2005.
Richard Koch, Jenkintown, PA – Pocono Manor East Course (Pocono Manor, PA), 13th hole, 190 yards, 4-iron. May 29, 2005.
James Krewson, Kintnersville, PA – Leesburg Public GC (Silver Lake), 12th hole, 138 yards, 8-iron. April 21, 2005.
Mike Lamb, Asheville, NC – Broadmore GC (Asheville, NC), 17th hole, 162 yards, 7-iron. September 8, 2005.
Paul Larson, Morrisville, PA – Highbridge Hills GC (High Bridge, NJ), 6th hole, 89 yards, PW. July 11, 2005.
Ronald Lucente, Baden, PA – Green Meadows GC (Volant, PA), 6th hole, 165 yards, 5-wood. June 20, 2005.
Ivan Maynard, Hamilton, ON – Oak Gables GC (Ancaster, ON), 5th hole, 126 yards, 7-iron. June 28, 2005.
Herb McClellan, Grand Blanc, MI – Holly Meadows GC (Capac, MI), 11th hole, 130 yards, 9-iron. July 6, 2005.
Walter McColl, River Edge, NJ – Architects Club (Phillipsburg, NJ), 12th hole, 159 yards, 6-iron. June 2, 2005.
Bob Messner, Mansfield, OH – Woody Ridge GC (Shelby, OH), 15th hole, 134 yards, PW. June 10, 2005.
Maurice Meyers, Osgood, IN – Tri County GC (Middletown, IN), 7th hole, 141

yards, 7-iron. June 23, 2005.
Ron Oliver, Decatur, IL – Moweaqua, IL, 7th hole, 132 yards, 7-iron. June 9, 2005.
Norman Parshall, Indianapolis, IN – South Grove GC (Indianapolis, IN), 5th hole, 173 yards, 5-wood. June 7, 2005.
David L. Petchel, Wales, WI – Boulder Creek GC (Boulder, NV), 147 yards, 8-iron. June 20, 2005.
Ricky Price, Clay, KY – Benton CC (Benton, KY), 144 yards, 7-iron. August 7, 2005.
Garry Pritchell, Danville, VA – Ringgold GC (Ringgold, VA), 6th hole, 167 yards, 7-iron. May, 30, 2005.
Joseph Prushinski, Nanticoke, PA – Rolling Pines GC (Berwick, PA), 5th hole, 185 yards, 3-wood. July 21, 2005.
John Quinn, Califon, NJ – High Bridge Hills GC (High Bridge, NJ), 14th hole, 195 yards, 3-wood. January 18, 2005.
Kay Rancourt, Shawmut, ME – Briarwood GC (Shallotte, NC), 3rd hole, 123 yards, 4-wood. March 4, 2005.
Kenneth Rudes, Adams, NY – Highland Meadows G&CC (Watertown, NY), 11th hole, 150 yards. June 27, 2005.
Kenneth Schlater, Saint Henry, OH – Mercer County Elks (Celina, OH), 2nd hole, 140 yards, 5-iron. June 5, 2005.
Eric Schug, Lexington, NC – Sapona CC (Lexington, NC), 7th hole, 146 yards, 7-iron. July 10, 2005.
David Smith, Elgin, IL – Highlands GC (Elgin, IL), 15th hole, 109 yards, PW. July 14, 2005.
Ed Snyder, Gouldsboro, PA – Pocono Farms CC (Tobyhanna, PA), 3rd hole, 128 yards, PW. August 2, 2005.
Roger Stager, Sr., Wildwood, FL – Pine Ridge CC (Beverly Hills, FL), 15th hole, 143 yards, 7-iron. March 18, 2005; Links of Spruce Creek GC (Lady Lake, FL), 11th hole, 137 yards, 8-iron. June 3, 2005.
Robert Strait, Lithopolis, OH – Harbor Hills GC (Hebron, OH), 3rd hole, 129 yards, 9-iron. August 22, 2005.
Everett Streenz, Mt Pulaski, IL – Moweaqua GC (Moweaqua, IL), 117 yards, 7-iron. May 11, 2005.
Dolly Sywenki, Lehighton, PA – White Birch GC (Barnesville, PA), 9th hole, 112 yards, 7-wood. June 17, 2005.
Michael Tamucci, Birmingham, AL – Bent Brook GC (McCalla, AL), 7th hole, 165 yards, 7-wood. July 26, 2005.
Sarina Thornton, Valley Stream, NY – Hideout GC (Lake Ariel, PA), 10th hole, 110 yards, 8-iron. July 2, 2005.
Dave Turner, Windsor, ON – Roseland G&CC (Windsor, ON), 16th hole, 163 yards, 5-iron. July 2005.
Terri Usher, White Haven, PA – Thistle GC (Sunset Beach, NC), 3rd hole, 125 yards, 5-iron. July 17, 2005.
Bill Wargo, Mishawak, IN – Hampshire CC/Dogwood (Dowagiac, MI), 6th hole, 160 yards, 5-iron. July 17, 2005.
Keith Wensel, Omro, WI – Grand National GC (Hinckley, MN), 6th hole, 126 yards, PW. July 27, 2005.
Willie Williams, Tyler, TX – Cascades GC (Tyler, TX), 16th hole, 145 yards, 8-iron.
Phyllis Withers, Collingwood, ON, Canada – (Monterra GC, Collingwood, ON), 2nd hole, 90 yards, 8-iron. August 11, 2005.
Mike Zynda, Plover, WI – Tree Acres GC (Plover, WI), 4th hole, 118 yards, 9-iron. May 4, 2005.

THE GREAT GOLF CARD



**Register Now for
the Winter Drawing**

MEMBER GIVEAWAY

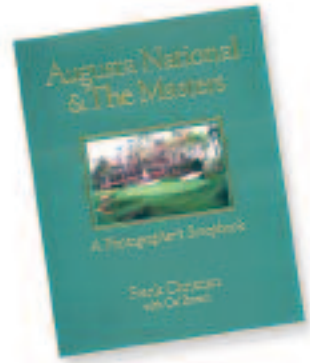
Through September, we've given out 140 prizes to Golf Card members entering our Golf Card Giveaways – everything from golf vacations to books and balls. We're not stopping now. Another 70 prizes will be awarded in our winter drawing scheduled for December 1. If you're a Golf Card member, just log on to the Golf Card website and enter by December 1. Winners will be announced in the 2006 Directory issue of Golf Traveler. The Grand Prize is a 3-day, 2-night, all-inclusive golf vacation at The Inn at Poland Spring in Poland Spring, Maine. If you won a prize in the Fall drawing, you can win again!

WINTER DRAWING – Deadline: December 1, 2005
Register today at www.golfcard.com/membergiveaway

One 3-day, 2-night golf vacation at the Inn at Poland Springs, a scenic Donald Ross design in Poland Springs, Maine. Includes unlimited golf, golf cart for 18 holes per day, deluxe room, select room, or cottage, tickets to all evening entertainment and all-you-can-eat buffet meals, including Friday's Supper.



- ◆ 9 dozen MOJO golf balls ◆ 24 2006 Great Golf By Design Wall Calendars
- ◆ 18 Augusta National and the Masters books ◆ 18 Golf Card golf hats



Summer Winners

Grand Prize
Weekend Golf Package for 2
at Nevele Grande Resort
Wilbur Sellers, Cornwall, NY

- Dozen Precept D Force golf balls (9 winners)**
- Robert Brewer Waxahachie, TX
 - Gordon Butler Galion, OH
 - Winfield Drennon Astatula, FL
 - David Hicks Downingtown, PA
 - Brad Hintz Fond Du Lac, WI
 - Louis Mangerpan Hewitt, NJ
 - Clarence Mason Rio Rancho, NM
 - Joe Rubino Wyoming, PA
 - Edward Snyder Gouldsboro, PA
- Bobby Jones and the Quest for the Grand Slam coffee-table books (24 winners)**
- Louis Atiles Payette, ID
 - Jack Clay Columbus, OH

- Elizabeth Gauntner Patton, PA
- William Goode Indian Head, MD
- Frank Gregg Gallatin, TN
- Kevin Hilkert Clearwater, FL
- James Hoffman Benton City, WA
- Harvey Jerome Chino Valley, AZ
- Mark Kinnaman Morristown, NJ
- Mike Koehler Paris, AR
- Robert Linehan Upland, IN
- Henry Lyons Coal City, IL
- Ralph Marano Port Monmouth, NJ
- Richard Melroy Greentown, PA
- Mark Morgan Cumberland, MD
- Lenny Nikoden Fairless Hills, PA
- Glenn Petroelje Holland, MI
- A. Pilosi Dover, NJ
- Kenneth Ruppel Dayton, OH
- Louis Sherman Waldwick, NJ
- Jack Shillington Chatham, ON
- Bunny Spiers Beaufort, SC

- Kirk Upright Moscow, PA
 - Marcus Worthington Sr. Baytown, TX
- Golf Card hats (36 winners)**
- Dudley Arzamarski Englewood, FL
 - Curtis Bacon Marion, OH
 - Richard Berg West Lebanon, NH
 - Ed Brier Liberal, KS
 - Charles Bruckner Petersburg, MI
 - Elmo Cooper New Orleans, LA
 - John Cure Hopatcong, NJ
 - James Delaney Middletown, NY
 - Dennis Dellostritto Warren, OH
 - Michael Gaddy Bowie, MD
 - Anthony Grande Madison, CT
 - James Harrison Clinton Twp, MI
 - Daniel Hazlett Dayton, OH
 - Peter Hirst Allentown, PA
 - Ola Horne New Bern, NC
 - Lyle Howard Ovid, MI

- Ronald Johnson Sarasota, FL
- Alfred Ketzler Fairbanks, AK
- John Krewsky Guilford, CT
- Robert Kuhn Midland Park, NJ
- Sean Lawrence Bethlehem, PA
- Lionel Lumbr Schenectady, NY
- Chris Manzo Sharon, PA
- Paul Mead Lexington, NY
- M A Miller Sun City West, AZ
- Judi Muldoon Rankonkoma, NY
- Robert Noel Strongsville, OH
- David Reinhardt Decatur, IL
- Frank Ross Red Hill, PA
- Wally Sandrin Sarnia, ON
- Kenneth Schultz Des Plaines, IL
- Leslie Stull Bluffton, SC
- Ronald Verkon Analomink, PA
- Evelyn Wheeler Gnadenhutten, OH
- Duane Wilmes Bella Vista, AR
- Bob Wilson Buena, NJ

ONLY GOLF CARD MEMBERS MAY ENTER at www.golfcard.com/membergiveaway. Just fill out the online form and you have a chance to win. You must be logged in as a member to enter. Winners will be announced in the 2006 Directory issue of *Golf Traveler*.

NO PURCHASE NECESSARY TO ENTER OR WIN. Chances of winning depend on the number of entries from eligible Golf Card members. Limit one entry per member. Limit one prize per member. Winners agree to the use of their name in Golf Traveler magazine. This Giveaway is open only to Gold Card members. Golf Card employees and their immediate family are ineligible. Prizes are non-transferable and no cash substitution is offered. Subject to all federal, state and local laws and regulations. Taxes are the sole responsibility of the winner. Void where prohibited by law.



(continued from cover)

Member tournaments have been filling up quickly this year – in fact, we had to turn members away at Villa Roma in the spring and Pocono Manor this fall. So sign up early for the Snowbird Reunion Tournament, always an anticipated event for the cabin-fever crowd!

The tournament is scheduled to kick off with a 12:30 shotgun and conclude with an awards banquet dinner in Walden Lake’s beautiful banquet room which overlooks the course. The format will be four-person scramble with prizes awarded for low gross and various net flights as well as closest to pin, longest putt and straightest drive. Members can sign up as a team or individuals/couples. The entry fee of \$65 will cover green fees, cart, prizes, and a barbecue dinner. You’ll want to sign up early – this is usually an early sell-out!



Architect Ron Garl incorporated his signature mounding and target areas at both Walden Lake golf courses.

Snowbird Reunion Tournament

- Date: Wednesday, January 25, 2006
- Time: 12 noon shotgun start
- Place: Walden Lake Golf Club (Plant City, FL)
- Web site: www.waldenlakegolf.com
- Format: Four-person scramble
- Price: \$65 per golfer
- Included: Golf, cart fee, all prizes, banquet dinner and awards ceremony following golf
- Dinner: Barbecue chicken and ribs plus numerous sides
- To enter: Call the Golf Card Tournament Hotline at 877-288-4802 or e-mail us at events@golfcard.com
- Entry deadline: . . . January 6 (limited to first 144 players)

About Walden Lake Golf and Country Club

Just a short drive off I-4 in Plant City – between Lakeland and Tampa – Walden Lake is a scenic 36-hole facility designed by renowned Florida architect Ron Garl (with Bob Cupp, Jay Moorish and Jack Nicklaus). Golf Digest’s Place to Play calls Walden Lake “fun” – a “must-play” course.

Garl’s trademark mounding, flashed-up bunkering, strategic water hazards, collection areas and elevated greens unique to Florida define the narrow, tree-lined Hills course. The Lake Course is memorable because of – you guessed it – all the water hazards coming into play and the numerous dogleg fairways. Jack Nicklaus recently designed the new back nine on the Lakes Course.

Walden Lake is not only memorable for its stylish design and fairness for all players, but a gracious, accommodating staff provides first-class service.

The Great North American RV Rally

July 11-14, @ Redmond, OR



Among the participants in the annual Great American North American RV Rally golf tournament were members and executives of Golf Card, Good Sam and other Affinity Group clubs.

Tournament Results

Northern Michigan Member-Guest

- 1st ... William Roofner, Chuck Abbott,
Judy Adams, Frederick Juliano
- 2nd ... Gordon Roeske, Karen Abbott,
James Frease, Audrey Baker
- 3rd ... Jerry Kain, Robert McFarlane,
Elia Kelly, Dorothy Grossman
- 4th ... George Blanco, Bob Barlow,
Joanne Sonefeld, Peggy Kain
- 5th ... James Kelly, Gene Adams,
Joanna Bechanko, Jeanette Stevens

Closest to Pin

Women: Joey Bosch • Men: George Blanco

Straightest Drive

Women: Judy Adams • Men: Dick Sonefeld

Longest Putt

Women: Marlene Kelley • Men: Paul Grossman

July 28 @ Tribute Course (Scramble)

- 1st ... James Kelley, John Rogers,
Joan Barribeau, Judy Adams

- 2nd ... Gene Peters, Gerald Bechanko,
Dorothy Grossman, Doris Roofner
- 3rd ... Bill Hough, Chuck Abbott,
Rene Sopher, Kathleen McFarlane
- 4th ... William Roofner, Dave Barribeau,
Patricia Krueger, Frances Juliano
- 5th ... George Blanco, Fred Juliano,
Kathy Vondette, Mary Peters

Closest to Pin

Women: Dottie Grossman • Men: Jerry Kain

Straightest Drive

Women: Judy Adams • Men: Gene Stevens

Longest Putt

Women: Doris Roofner • Men: George Blanco

Villa-Roma Member-Guest

May 24 @ Villa Roma Country Club

(Correction to results published in Summer newsletter)

Closest to Pin

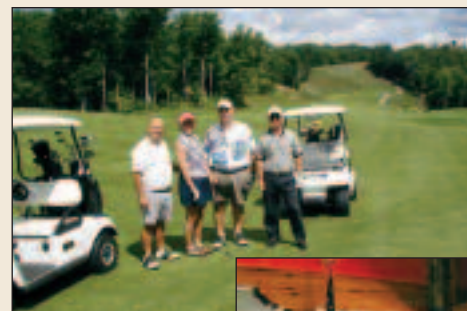
Women: Maureen Mullany

Straightest Drive

Men: Jim Mullany

Northern Michigan Member-Guest

July 27-28 @ Otsego Club



Winners and participants at the Northern Michigan Grasshoppers tournament held at The Otsego Club in Gaylord, Michigan. Co-Chair Dick Sonefeld reported that "we had a great day, beautiful weather and some very happy winners."

Good Friends. Good Times. Great Golf



Golf Card
Grasshoppers

Do you like having fun, meeting new people and playing golf? Now you can do all three when you join or form your own **Golf Card Grasshopper Club!**

Grasshoppers are Golf Card members who get together and have fun playing in local and inter-club golf tournaments and outings that are scheduled by a club director. With 115 clubs across the U.S. and Canada, there's bound to be a club near you!

To learn more about joining a Grasshopper Club, or forming your own club, visit the Golf Card web site at www.golfcard.com/calendar; email us at events@golfcard.com or call our toll-free Grasshopper hotline:

800-522-9201



NEW AFFILIATES (Since June 2005)

FLORIDA

ATLANTIS

3★ Atlantis CC & Inn
(561)968-1300, 190 Atlantis Blvd, *Web* www.atlantiscountryclub.com, *Facility* Semi-Private, *Fee* \$10 off, *Holes* 18, *Yardage* 6610/5242, *Availability* Anytime, # *Rounds* Unlimited

BEVERLY HILLS

Pine Ridge CC
(352)746-6177, 5600 N Elkhart Blvd, *Web* www.pineridgecountryclub.com, *Facility* Semi-Private, *Fee* May-Oct \$20, Nov-Apr 20% off, *Holes* 18, *Yardage* 6267/5225, *Availability* May-Oct anytime, Nov-Apr after 1pm, # *Rounds* 2

3★ Twisted Oaks GC
(352)746-6257, 4801 N Forest Ridge Blvd, *Web* www.twistedoaksgolfclub.com, *Facility* Semi-Private, *Fee* May-Oct \$20, Nov-Apr 20% off, *Holes* 18, *Yardage* 6876/4641, *Availability* May-Oct anytime, Nov-Apr after 1pm, # *Rounds* 2

BROOKSVILLE

3½★ Silverthorn CC
(352)799-2600, 4550 Golf Club Ln, *Web* www.silverthornclub.net, *Facility* Semi-Private, *Fee* \$10 off, *Holes* 18, *Yardage* 6933/5259, *Availability* Anytime, # *Rounds* Unlimited

CLEARWATER

Clearwater CC
(727)443-5078, 525 N Betty Lane, *Web* www.clearwatercountryclub.com, *Facility* Semi-Private, *Fee* May-Oct \$22, Nov-Apr \$5 off + free bucket of range balls, *Holes* 18, *Yardage* 6239/5458, *Availability* Anytime, # *Rounds* 2

COCOA BEACH

Cocoa Beach CC
(321)868-3351, 5000 Tom Warriner Blvd, *Web* www.golfcocobeach.com, *Facility* Municipal, *Fee* Dec-Apr Brevard County rate, May-Nov Cocoa Beach City rate, *Holes* 27, *Yardage* 3372/3342/3021, *Availability* Anytime, # *Rounds* 2

DEERFIELD BEACH

3½★ Deer Creek GC
(954)421-5550, 2801 Country Club Blvd, *Web* www.deercreekflorida.com, *Facility* Semi-Private, *Fee* 20% off, *Holes* 18, *Yardage* 7038/5335, *Availability* Mon-Thu, # *Rounds* 2

FORT PIERCE

Island Pines GC
(772)464-7018, 5700 Indian Pines Blvd, *Facility* Semi-Private, *Fee* 2 for 1, *Holes* 18, *Yardage* 6545/5180, *Availability* May-Oct anytime, Nov-Apr after 12pm, # *Rounds* 2

JENSEN BEACH

3½★ Eagle Marsh GC
(772)692-3322, 3869 Royal Oak Rd, *Web* www.eaglemarsh.com, *Facility* Daily Fee, *Fee*



Hickory Ridge is a 3½ star Geoffrey Cornish design in Amherst, Massachusetts that offers Golf Card members a 2 for 1 discount.

20% off, *Holes* 18, *Yardage* 6904/4765, *Availability* Anytime after 10am, # *Rounds* 2

LADY LAKE

4★ Harbor Hills CC
(352)753-7711, 6538 Lake Griffin Rd, *Web* www.harborhills.com, *Facility* Semi-Private, *Fee* Jan-Apr \$49, May-Aug \$28, Sep-Dec \$35, *Holes* 18, *Yardage* 6910/5373, *Availability* Anytime, call up to 72 hrs in adv, # *Rounds* 2

LAKE WORTH

Lake Worth GC
(561)582-9713, One 7th Ave N, *Web* www.lakeworth.org, *Facility* Municipal, *Fee* Dec-Apr 15% off green fee, May-Nov 20% off, *Holes* 18, *Yardage* 6113/5423, *Availability* Anytime before 12pm, # *Rounds* Unlimited

LAKELAND

Bramble Ridge GC
(863)667-1988, 2505 Bramble Ridge Dr, *Web* www.brgolf.com, *Facility* Private, *Fee* Jan-Apr \$26, May-Dec specials from course, *Holes* 18, *Yardage* 6000/4271, *Availability* Jan-Apr wknds, May-Dec anytime, # *Rounds* 2

MIAMI

Costa del Sol GC
(305)592-3300, 100 Costa Del Sol Blvd, *Web* www.costagreensgolf.com, *Facility* Daily Fee, *Fee* 2 for 1, *Holes* 18, *Yardage* 6273/5295, *Availability* Anytime, # *Rounds* Unlimited

OKEECHOBEE

Okeechobee G & CC
(863)763-6228, 405 NE 131st Ln, *Facility* Semi-Private, *Fee* May-Sep \$18, Oct-Apr \$25, *Holes* 18, *Yardage* 6887/5002, *Availability* Anytime, # *Rounds* Unlimited

PALMETTO

3★ Imperial Lakewoods GC
(941)747-4653, 6807 Buffalo Rd, *Facility* Semi-Private, *Fee* 20% off, *Holes* 18, *Yardage*

7050/5275, *Availability* Anytime, # *Rounds* Unlimited

ROYAL PALM BEACH

The Village GC
(561)793-1400, 122 Country Club Dr, *Facility* Daily Fee, *Fee* Nov 1-Nov 18 \$32, Nov 19-Dec 16 & Apr 1-17 \$34, Dec 17-Mar \$39, Apr 18-Oct wkdays \$23, wknds \$28, *Holes* 18, *Yardage* 6900/5455, *Availability* Anytime, # *Rounds* 2

SPRING HILL

Seven Hills GC
(352)688-8888, 10599 Fairchild Rd, *Web* www.sevenhillsgolfersclub.com, *Facility* Semi-Private, *Fee* 25% off, *Holes* 18, *Yardage* 6715/4902, *Availability* Anytime, # *Rounds* 2

Spring Hill GC
(352)683-2261, 12079 Coronado Dr, *Web* www.springhillgolfclub.com, *Facility* Semi-Private, *Fee* 25% off, *Holes* 18, *Yardage* 6917/5568, *Availability* Anytime, # *Rounds* 2

TAMPA

Babe Zaharias GC
(813)631-4374, 11412 Forest Hills Dr, *Web* www.babzahariasgc.com, *Facility* Municipal, *Fee* \$23 - \$32, *Holes* 18, *Yardage* 6200/4808, *Availability* Anytime, # *Rounds* Unlimited

VERO BEACH

3½/4★ Sandridge GC
(772)770-5000, 5300 73rd St, *Web* www.sandridgecc.com, *Facility* Daily Fee, *Fee* Dec 26-Apr 8 wkdays \$31, wknds \$30, Apr 9-Apr 30 & Nov-Dec 24 \$25, May-Oct \$20.50, *Holes* 36, *Yardage* 6152/6817, 4625/4944, *Availability* Dec 26-Apr 8 wkdays after 1pm, wknds after 11am, Apr 9-Dec 24 anytime, # *Rounds* Unlimited

IOWA

NEWTON

Westwood GC
(641)792-3087, 3387 Hwy F48W, *Facility* Municipal, *Fee* CGF, *Holes* 18, *Yardage* 6321/5618, *Availability* Anytime, # *Rounds* 2

MAINE

ARUNDEL

Dutch Elm GC
(207)282-9850, 5 Brimstone Rd, *Web* www.dutchelmgolf.com, *Facility* Daily Fee, *Fee* 2 for 1, *Holes* 18, *Yardage* 6314/5248, *Availability* Wkdays anytime, wknds & hol after 12pm, # *Rounds* 2

BAR HARBOR

4★ Kebo Valley GC
(207)288-3000, Eagle Lake Rd, *Web* www.kebovalleyclub.com, *Facility* Semi-Private, *Fee* Free cart with paid green fee, *Holes* 18, *Yardage* 6131/5473, *Availability* Anytime, # *Rounds* Unlimited

CASCO

4★ Point Sebago G & Bch Rst
(207)655-2747, 261 Pt Sebago Rd, *Web* www.pointsebago.com, *Facility* Resort, *Fee* \$32, *Holes* 18, *Yardage* 7002/4866,

Availability Anytime after 11am, # *Rounds* Unlimited

OGUNQUIT

Cape Neddick CC
(207)361-2011, 650 Shore Rd, *Web* www.capeneddickgolf.com, *Facility* Semi-Private, *Fee* \$30, *Holes* 18, *Yardage* 6100/4950, *Availability* Wkdays anytime, wknds & hol after 12pm, call 3 days in adv, # *Rounds* 2

POLAND SPRING

3½★ Poland Spring Rst
(207)998-6002, 41 Ricker Rd, *Web* www.polandspringresort.com, *Facility* Resort, *Fee* 2 for 1, *Holes* 18, *Yardage* 6159/5138, *Availability* Mon-Thu, # *Rounds* 2

MASSACHUSETTS

AMHERST

3½★ Hickory Ridge CC
(413)253-9320, 191 W Pomeroy Lane, *Web* www.hickoryridgecc.com, *Facility* Semi-Private, *Fee* 2 for 1, *Holes* 18, *Yardage* 6794/5340, *Availability* Wkdays anytime, wknds & hol after 1pm, # *Rounds* 2

LANESBOROUGH

Skyline CC
(413)445-5584, 405 S Main St, *Web* www.skyline-cc.com, *Facility* Daily Fee, *Fee* 2 for 1, *Holes* 18, *Yardage* 6075/4708, *Availability* Jun 30-Sep 1 anytime, Jul-Aug after 11am, # *Rounds* 2

MINNESOTA

MONTGOMERY

Montgomery GC
(507)364-5602, 900 Rogers Dr, *Web* www.montgomerygolfclub.com, *Facility* Semi-Private, *Fee* \$32, *Holes* 18, *Yardage* 6540/4977, *Availability* Mon, Tue, Thu & Fri anytime, Wed before 12pm, wknds & hol after 2pm, # *Rounds* 2

NISSWA

4½★ Grand View Lodge — The Pines GC
(218)963-8750, 23521 Nokomis Ave, *Web* www.grandviewgolf.com, *Facility* Resort, *Fee* \$49.50, *Holes* 27, *Yardage* 3414/3460/3423, 3066/3086/3073, *Availability* Mon-Thu after 1pm, # *Rounds* 2

4½★ Grand View Lodge — The Preserve GC

(888)437-4637, 23521 Nokomis Ave, *Web* www.grandviewgolf.com, *Facility* Resort, *Fee* \$49.50, *Holes* 18, *Yardage* 6601/4816, *Availability* Mon-Thu after 1pm, # *Rounds* 2

PINE RIVER

Irish Hills GC
(218)587-2300, Rt 1, *Facility* Resort, *Fee* 2 for 1, *Holes* 18, *Yardage* 6011/4446, *Availability* Mon-Thu, # *Rounds* 6

RICE

Oak Hill GC
(320)259-8969, 9000 Hwy 10 NW, *Web* www.oakhillgolfclub.com, *Facility* Daily Fee, *Fee* \$20, *Holes* 18, *Yardage* 6534/5006, *Availability* Anytime, # *Rounds* 2

MISSOURI

BELTON

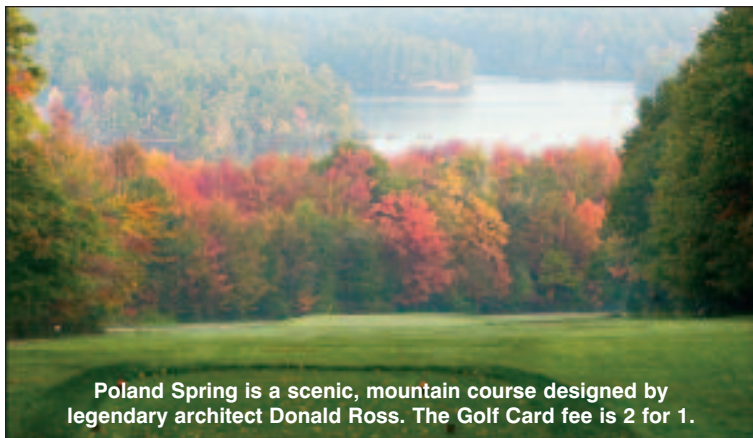
Eagles Landing GC
(816)318-0004, 4200 Bong Ave, *Web* www.eagleslandinggolfcourse.com, *Facility* Daily Fee, *Fee* 2 for 1, *Holes* 18, *Yardage* 6888/4909, *Availability* Wkdays anytime, wknds & hol after 12pm, # *Rounds* 2

CASSVILLE

Cassville GC
(417)847-2399, Hwy 112 S, *Facility* Daily Fee, *Fee* 2 for 1, *Holes* 18, *Yardage* 6604/5802, *Availability* Wkdays anytime, wknds after 1pm, # *Rounds* 2

LAWSON

Hidden Valley GC
(816)580-3444, 800 W 18th St, *Facility* Daily Fee, *Fee* CGF, *Holes* 18, *Yardage* 6702/5487, *Availability* Wkdays, no hol, # *Rounds* 2



Poland Spring is a scenic, mountain course designed by legendary architect Donald Ross. The Golf Card fee is 2 for 1.

MOUNTAIN GROVE
Randel-Hinkle Muni GC
 (417)926-5700, 1002 W First St, Facility Municipal, Fee 2 for 1, Holes 18, Yardage 6050/5592, Availability Tue-Fri, 8am-5pm, # Rounds 2

MOUNTAIN VIEW
Mountain View Municipal GC
 (417)934-6959, 115 S Jackson St, Facility Municipal, Fee CGF, Holes 18, Yardage 6185/4545, Availability Anytime, # Rounds 2

OSAGE BEACH
3 1/2★Dogwood Hills GC
 (573)348-3153, 1252 State Hwy KK, Web www.dogwoodhillsresort.com, Facility Daily Fee, Fee 20% off, Holes 18, Yardage 6157/4641, Availability Mon-Thu, # Rounds 2

NEW HAMPSHIRE

CANDIA
3 1/2★Candia Woods Golf Links
 (603)483-2307, 313 South Rd, Web www.candiawoods.com, Facility Daily Fee, Fee \$45, Holes 18, Yardage 6550/5315, Availability Wkdays, no hol, call 5 days in adv, # Rounds Unlimited

CONCORD
3★Beaver Meadow GC
 (603)228-8954, 1 Beaver Meadow Dr, Web www.beavermeadowgolfcourse.com, Facility Daily Fee, Fee 2 for 1, Holes 18, Yardage 6356/5519, Availability Mon-Thu anytime, Fri-Sun after 1pm, # Rounds 2

FRANCESTOWN
Crotched Mountain Golf Rst
 (603)588-2923, 740 2nd New Hampshire Tpk N, Web www.crotchedmountain.net, Facility Resort, Fee \$30, Holes 18, Yardage 6111/4604, Availability Wkdays, # Rounds 2

JEFFERSON
Waumbek CC
 (603)586-7777, Rt 2, Web www.playgolfne.com, Facility Daily Fee, Fee Wkdays \$25, wknds & hol \$30, Holes 18, Yardage 6128/4772, Availability Anytime, # Rounds Unlimited

LOCHMERE
4★Lochmere G & CC
 (603)528-4653, Rt 3, Facility Daily Fee, Fee 20% off, Holes 18, Yardage 6697/5267, Availability Jul-Sep 9 Mon-Thu, Apr-Jun & Sep 10-Nov anytime, # Rounds Unlimited

NEWPORT
3★Newport GC
 (603)863-7787, 112 Unity Rd, Web www.newport-golf.com, Facility Daily Fee, Fee \$35, Holes 18, Yardage 6415/4738, Availability Mon-Thu, no hol, call 48 hrs in adv, # Rounds 5

SOMERSWORTH
The Oaks Golf Links
 (603)692-6257, 100 Hideaway Place, Web www.theoaksgolf.com, Facility Daily Fee, Fee \$45, Holes 18, Yardage 6711/4899, Availability Wkdays, no hol, call 5 days in adv, # Rounds Unlimited

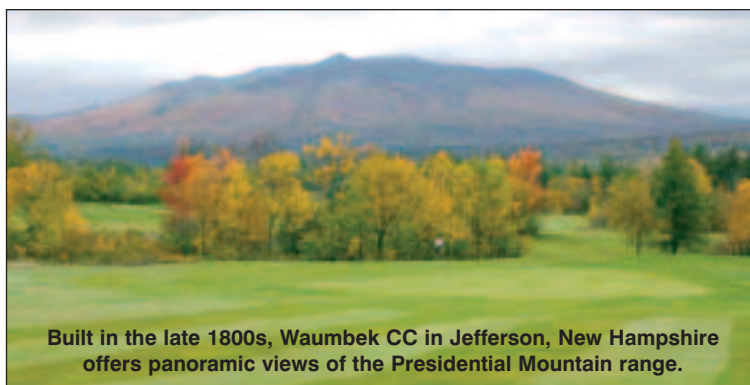
WOLFEBORO
Kingswood GC
 (603)569-3569, Rt 28 S Main, Web www.kingswoodgolfclub.com, Facility Semi-Private, Fee Opening-May & Sep 16-closing \$30, Jun-Sep 15 \$40, Holes 18, Yardage 6360/5300, Availability Wkdays anytime, wknds & hol after 1pm, # Rounds 2

NEW JERSEY

SEWELL
Maple Ridge GC
 (856)468-3542, 1705 Glassboro Rd, Web www.championshipgolfmanagement.com, Facility Daily Fee, Fee \$20, Holes 18, Yardage 6500/5177, Availability Wkdays anytime, wknds & hol after 2pm, # Rounds Unlimited

NEW YORK

LAKE GEORGE
3★Queensbury CC
 (518)793-3711, 907 St Rt 149, Web www.lakegeorgegolf.com/queensbury,



Built in the late 1800s, Waumbek CC in Jefferson, New Hampshire offers panoramic views of the Presidential Mountain range.

Facility Daily Fee, Fee 2 for 1, Holes 18, Yardage 6067/4750, Availability Apr-Jun & Sep-Nov wkdays after 11am, Jul-Aug wkdays after 12pm, all year wknds after 12pm, # Rounds 2

TUPPER LAKE
Tupper Lake CC
 (518)359-3701, Country Club Rd, Web www.tupperlakecountryclub.com, Facility Daily Fee, Fee 2 for 1, Holes 18, Yardage 6153/5245, Availability Anytime, # Rounds Unlimited

SOUTH CAROLINA
YORK
Carolina Crossing CC
 (803)684-5878, 294 S Shiloh Rd, Web www.carolinacrossingcc.com, Facility Daily Fee, Fee \$20, Holes 18, Yardage 6691/5092, Availability Mon-Thu anytime, Fri-Sun after 12pm, # Rounds 4

VERMONT
MANCHESTER VILLAGE
3★Gleneagles GC at The Equinox
 (802)362-3223, Union St, Web www.rockresorts.com, Facility Resort, Fee May-Jun \$60, Jul-Oct \$70, Holes 18, Yardage 6423/5082, Availability Mon-Thu, no hol, # Rounds 2

WISCONSIN
BLACK RIVER FALLS
3 1/2★Skyline GC
 (715)284-2613, 612 11th & Golf Rd, Web www.golfskyline.com, Facility Daily Fee, Fee 20% off, Holes 18, Yardage 6371/5084, Availability Wkdays & Sun anytime, Sat & hol after 12pm, # Rounds 2

LUCK
Luck G & CC
 (715)472-2939, 1520 S Shore Dr, Web www.luckgolfcourse.com, Facility Municipal, Fee CGF, Holes 18, Yardage 6122/5198, Availability Mon-Wed, not valid for tournaments or with other offers, # Rounds 2

MADISON
3 1/2★The Bridges GC
 (608)244-1822, 2702 Shopko Dr, Web www.golfthebridges.com, Facility Daily Fee, Fee 2 for 1, Holes 18, Yardage 6888/5322, Availability Mon-Thu anytime, Fri-Sun & hol after 1pm, # Rounds 2

RICE LAKE
4★Turtleback GC
 (715)234-7641, 185 W Allen Rd, Web www.turtlebackgolf.com, Facility Daily Fee, Fee \$35.00, Holes 18, Yardage 6628/5163, Availability Mon-Thu anytime, Fri-Sun & hol after 2pm, # Rounds 2

TREMPEALEAU
Trempealeau Mountain GC
 (608)534-7417, W2-4411 Fairway Dr, Web www.golftthemountain.com, Facility Daily Fee, Fee Wkdays \$15, wknds \$18, Holes 18, Yardage 6485/5367, Availability Wkdays anytime, Sat before 7am & after 2pm, Sun before 7am & after 11am, # Rounds Unlimited

VERONA
4 1/2★Hawks Landing GC
 (608)848-4295, 88 Hawks Landing Cir, Web www.hawkslandinggolfclub.com, Facility Semi-Private, Fee \$10 off, Holes 18, Yardage 7227/5395, Availability Sat-Wed after 1pm, # Rounds Unlimited

CANADA
NOVA SCOTIA
PUGWASH
4 1/2★Northumberland Links
 (902)243-2808, 1776 Gulf Shore Rd, Web www.northumberlandlinks.com, Facility Semi-Private, Fee 20% off, Holes 18, Yardage 6515/5521, Availability Wkdays, # Rounds 2

NEW AFFILIATES
 (January-June 2005)

ALABAMA, ANNISTON, Cane Creek GC, (256)820-9174
Pine Hill CC, (256)237-2633
ELBERTA, Soldiers Creek GC at the Preserve, (251)986-3227
FAIRHOPE, Quail Creek GC, (888)701-2202
HARTSELLE, Quail Creek GC, (256)784-5033
LEEDS, River Oaks G & CC, (205)699-4851
NORTHPORT, Hidden Meadows GC, (205)339-3673
SCOTTSBORO, Broken Arrow GC, (256)582-9888
ARKANSAS, DARDANELLE, Bay Ridge Boat & GC, (479)229-4162
GLENWOOD, Glenwood CC, (870)356-4422
MABELVALE, Lakeview G & CC, (501)562-1814
CALIFORNIA, TRUCKEE, Northstar-At-Tahoe, (530)562-1010
FLORIDA, DELTONA, Deltona Hills G & CC, (386)789-4911
GONZALEZ, Solutia GC, (850)968-8129
JACKSONVILLE, Pine Lakes GC,

(904)757-0318
KISSIMMEE, Orange Lake Rst & CC, (407)239-1050
LONGWOOD, Sabal Point CC, (407)869-4622
MILTON, The Moors Golf & Lodging, (850)994-7040
MOUNT DORA, Mount Dora GC, (352)383-3954
ORLANDO, Lake Orlando GC, (407)970-5294
PACE, Stonebrook GC, (850)994-7171
PENSACOLA, Marcus Pointe GC, (800)362-7287
Perdido Bay GC, (850)492-1223
TAMPA, Rocky Point GC, (813)673-4316

Rogers Park GC, (813)356-1670
KANSAS, JUNCTION CITY, Rolling Meadows GC, (785)238-5163
KANSAS CITY, Dub's Dread GC, (913)721-1333
Painted Hills, (913)334-1111
WELLINGTON, Wellington GC, (620)326-7904

LOUISIANA, JENNINGS, Jennings GC, (337)824-1274
LULING, Willowdale CC, (985)785-2478
MARYLAND, DENTON, Upland GC, (410)634-1200

MOUNT AIRY, The Links at Chaledon, (410)552-0320
NEW MARKET, Westwinds GC, (301)831-6191
RIDGELY, Upland GC, (410)634-1200
UPPER MARLBORO, Marlborough CC, (301)952-1350

WALKERSVILLE, Glade Valley GC, (301)898-5555
WESTMINSTER, Bear Creek GC, (410)876-4653
MICHIGAN, MENOMINEE, North Shore GC, (906)863-3844
MISSISSIPPI, BILOXI, Sunkist CC, (228)388-3961
COLUMBUS, Elm Lake GC, (662)329-8964

DIAMONDHEAD, Diamondhead CC—Cardinal, (228)255-3910
Diamondhead CC—Pines, (228)255-3910
HATTIESBURG, Timberton GC, (601)584-4653

JACKSON, Brookwood CC, (601)373-1601
OCEAN SPRINGS, St Andrews GC, (228)875-7730
OLIVE BRANCH, Wedgewood GC, (662)895-7490
PASS CHRISTIAN, The Oaks GC, (228)452-0909
RAYMOND, Eagle Ridge GC, (601)857-5993



Golf Card members are in luck when they play picturesque Luck Golf and Country Club in Luck, Wisconsin — the green fees are complimentary!



TEE-RIFIC™ GOLF

IN SUMTER,
SOUTH CAROLINA



Welcomed at
23 Beautiful Courses

Packages From

\$55.95
Per Day

to **\$75.95**
Per Day

call for rates and dates

**BASIC PLAN
GOLF PACKAGE
INCLUDES:**

- Unlimited Greens Fees
 - Cart Fee
(18 Holes per Day)
- Deluxe Hotel Room
(Double Occupancy)
- Full Hot Breakfast Buffet
 - Full Dinner
- In-Room Refrigerator
& Mr. Coffee Maker
 - Free Golf Gift

RAMADA® INN
SUMTER, SOUTH CAROLINA

1-800-457-6884

Or Visit Us on the Web:
www.ramadagolf.com

ROBINSONVILLE, River Bend Links, (662)363-1005
STARKVILLE, Mississippi State University GC, (662)325-3028
MONTANA, RONAN, Mission Mountain CC, (406)676-4653
NEBRASKA, OMAHA, The Knolls GC, (402)493-1740
OKLAHOMA, BARTLESVILLE, Adams GC, (918)331-3900
BROKEN ARROW, Battle Creek GC, (918)355-4850
Forest Ridge GC, (918)357-2282
TAHLEQUAH, Cherry Springs GC, (918)456-5100
TULSA, Mohawk Park GC—Pecan Valley, (918)425-6871
Mohawk Park GC—Woodbine, (918)425-6871
Page Belcher GC—Olde Page, (918)446-1529
Page Belcher GC—Stone Creek, (918)446-1529
VIAN, Ten Killer GC, (918)773-8436
WOODWARD, Boiling Springs GC, (580)256-1206
PENNSYLVANIA, HAZLETON, Best Western Genetti Lodge, (570)501-3702
TENNESSEE, CHUCKEY, Twin Creeks GC, (423)257-5192
COUNCE, Shiloh Falls GC, (731)689-5050
DANDRIDGE, Dandridge G & CC, (865)397-2655
GREENEVILLE, Baileytown GC, (423)234-5131
JACKSON, Jones Creek GC, (731)425-8620
JEFFERSON CITY, Patriot Hills GC, (865)475-4466
KNOXVILLE, Three Ridges GC, (865)687-4797
LENOIR CITY, Landmark GC At Avalon, (865)986-4653
MANCHESTER, Willowbrook GC, (800)319-8001
MARYVILLE, The Golf Club, (865)856-4400
MILLINGTON, Orgill Park GC, (901)872-3610
PICKWICK DAM, Shiloh Falls GC, (731)689-5050

TROY, WynRidge Greens GC, (731)536-4653
UNICOI, Buffalo Valley GC, (423)743-5021
TEXAS, COPPERAS COVE, Hills Of Cove GC, (254)547-2606
FLOWER MOUND, The Links At Water Chase, (817)861-4653
SALADO, Mill Creek GC, (254)947-5698
VIRGINIA, BASYE, Bryce Rst, (540)856-2124
CHRISTIANSBURG, The Meadows G & CC, (540)382-3732
FOREST, Colonial Hills GC, (434)525-3954
London Downs GC, (434)525-4653
FRONT ROYAL, Shenandoah Valley GC, (540)636-2641
HOPEWELL, Jordan Point CC, (804)458-0141
MANASSAS, Forest Green GC, (703)221-0123
General's Ridge GC, (703)335-0777
Prince William GC, (703)754-7111
MARTINSVILLE, Beaver Hill GC, (276)632-1526
PALMYRA, Laurel Ridge GC, (434)589-3730
PROVIDENCE FORGE, The GC at Brickshire, (804)966-7888
ROANOKE, Countryside GC, (540)563-0391
STAUNTON, Ingleside Rst & Conf Center, (540)248-1201
WILLIAMSBURG, Colonial GC, (757)566-1600
WINCHESTER, Carper's Valley GC, (540)662-4319
WOODBRIIDGE, The Ospreys GC at Belmont Bay, (703)497-1384
WEST VIRGINIA, MOOREFIELD, Valley View GC, (304)538-6564
WYOMING, RAWLINS, Rochelle Ranch GC, (307)324-7121

COURSE DELETIONS

.....
ALABAMA, Bayou La Batre, Bay Oaks GC
Mobile, The Linksman GC Of Mobile Montgomery, River Run GC - Red & White

Tuscumbia, Arrowhead CC
CALIFORNIA, Cathedral City, Desert Princess CC
Kerman, Fresno West G & CC
Rancho Mirage, Rancho Mirage CC
COLORADO, Colorado Springs, Gleneagle GC
Copper Mountain, Copper Creek GC
GEORGIA, Dawsonville, Chestatee GC
IDAHO, Priest Lake, Priest Lake GC
INDIANA, Angola, Hidden Valley GC
Greenwood, Old Capital GC
Greenwood, Valle Vista GC
Vincennes, Fox Ridge CC
IOWA, Clinton, Valley Oaks GC
MAINE, Carrabassett Valley, Grand Summit Hotel at Sugarloaf
MICHIGAN, Dorr, Lake Monterey GC
MISSOURI, Troy, Royal Oaks GC
NEBRASKA, Plainview, Plainview CC
NEVADA, Laughlin, Emerald River GC
NEW YORK, Auburn, Cranebrook GC
NORTH CAROLINA, Statesville, Lakewood GC
OHIO, Bowling Green, Stone Ridge GC
Newark, Licking Springs Trout & GC
PENNSYLVANIA, King Of Prussia, Valley Forge GC
SOUTH CAROLINA, Anderson, Quality Inn
Myrtle Beach, Quail Creek GC
TENNESSEE, Dickson, Dickson CC
TEXAS, Austin, Lakeway GC—Live Oak, Lakeway GC—Yaupon
Plano, Chase Oaks GC
San Antonio, Alamo CC
VIRGINIA, Fredericksburg, Cannon Ridge GC
WISCONSIN, Mondovi, The Valley GC

CANADA

.....
ALBERTA, Sexsmith, Morningview Park GC
ONTARIO, Kitchener, Doon Valley GC, Rockway GC ↴

Golf Traveler®

Statement of Ownership, Management and Circulation

1. Publication Title: Golf Traveler
2. Publication Number: 0191-717X
3. Filing Date: September 16, 2004
4. Issue Frequency: Quarterly
5. Number of Issues Published Annually: Four
6. Annual Subscription Price: \$12
7. Complete Mailing Address of Known Office of Publication: 64 Inverness Drive E., Englewood, Colorado 80112. Contact Person: Valerie Law. Telephone: (805) 667-4333
8. Complete Mailing Address of Headquarters of General Business Office of Publisher: 2575 Vista del Mar Drive, Ventura, California 93001
9. Full Names and Complete Mailing Address of Publisher and Editor: Publisher: Valerie Law, 2575 Vista del Mar Drive, California 93001; Editorial Director: Valerie Law, 2575 Vista del Mar Drive, California 93001
10. Owner: Golf Card International, 64 Inverness Drive E., Englewood, Colorado 80112
11. Known Bondholders, Mortgages and Other Security Holders Owning or Holding 1 Percent or More of Total Amount of Bonds, Mortgages or Other Securities: None
12. Does Not Apply
13. Publication Title: Golf Traveler
14. Issue Date for Circulation Data Below: July 12, 2004 (Summer issue)
15. Extent and Nature of Circulation
 - a. Total Number of Copies: Average No. Copies Each Issue During Preceding 12 Months: 77,750; No. Copies of Single Issue Published Nearest to Filing Date: 62,000
 - b. (1) Paid/Requested Outside-County Mail Subscriptions Stated on

Form 3541: Average No. Copies Each Issue During Preceding 12 Months: 57,571; No. Copies of Single Issue Published Nearest to Filing Date: 52,529

c. Total Paid and/or Requested Circulation: Average No. Copies Each Issue During Preceding 12 Months: 57,571; No. Copies of Single Issue Published Nearest to Filing Date: 52,529

e. Free Distribution Outside the Mail: Average No. Copies Each Issue During Preceding 12 Months: 18,440. Copies of Single Issue Published Nearest to Filing Date: 6,225

f. Total Free Distribution: Average No. Copies Each Issue During Preceding 12 Months: 18,440; No. Copies of Single Issue Published Nearest to Filing Date: 6,225

g. Total Distribution: Average No. Copies Each Issue During Preceding 12 Months: 73,011; No. Copies of Single Issue Published Nearest to Filing Date: 58,754

h. Copies not Distributed: Average No. Copies Each Issue During Preceding 12 Months: 4,739; No. Copies of Single Issue Published Nearest to Filing Date: 3,246

i. Total: Average No. Copies Each Issue During Preceding 12 Months: 77,750; No. Copies of Single Issue Published Nearest to Filing Date: 62,000

j. Percent Paid and/or Requested Circulation: Average No. Copies Each Issue During Preceding 12 Months: 79%; No. Copies of Single Issue Published Nearest to Filing Date: 89%

16. Publication of Statement of Ownership: Will be printed in the Fall 2004 issue of this publication.

17. Signature and Title of Editor, Publisher, Business Manager, or Owner (signed): Valerie Law, Publishing/Editorial Director. Date: September 16, 2004.

The Rally

Daytona Beach, Florida
April 7-10, 2006

Join Us at the Greatest RV Rally in the World!



Good Times



Dog Show



RVs on Display



Youth Program

Join fellow RVers from around the world at the famous Daytona International Speedway for the RV Event of the year **April 7-10, 2006!** Come to Daytona to see the latest RV products, learn more about your RV lifestyle and to make new friends.

Don't miss the fun and entertainment at the 2006 Rally, where you'll experience firsthand the most famous NASCAR racetrack in the United States! You'll share stories, swap travel tips, enjoy the beautiful Florida coast with thousands of other RVers...all coming together for this once in a lifetime experience.

With something for everyone, our 7th annual RV Rally will be the RVing highlight of the year.

For more information or to register,
go to **www.rv.net/rally**
or call **877-749-7122**

Rally Highlights Include:

- Hundreds of RV products on display
- More than 1000 rigs to view
- Top name entertainment every evening
- Informative RV seminars by industry experts
- \$1000s in prizes & giveaways
- Fun-filled youth program
- Exciting optional tours
- Access to Daytona USA

Pricing:

- \$59 pp - Passport (no on-site RV parking)
- \$279 - 2 Adults (30-amp electric hook-up)
- \$139 - 2 Adults (dry camping)



Wrap up the perfect gift for all the golfers on your list



Special Holiday Offer for Members Only

Every year it seems to get a little harder to find the perfect gift for the holidays. This year, why not do yourself a favor, and wrap up some of your holiday shopping early? How? Give all the golfers on your gift list a one-year membership to the Golf Card[®]. They'll remember your thoughtfulness when they save big on golf at over 3,600 golf courses and resorts during the year. And, every time *Golf Traveler* arrives in their mailboxes, your generous gift will be remembered.

In fact, the people who receive your gift will be entitled to ALL the benefits you already have as a member in the Golf Card.

Don't delay. The holidays are right around the corner. When you order by December 2, we can guarantee delivery in time for the holidays. We'll take care of the details. We'll send each person who receives your gift a full membership package—including their membership card that entitles them immediately to all the benefits—in a special gift presentation. We'll make sure to include an announcement that the gift is from you.

The regular rate for a one-year Golf Card International membership is \$65. But your special offer is just \$39. This very special gift offer applies to new members only, and cannot be used to renew existing memberships.



Golf Card
INTERNATIONAL

The Most Powerful Club in Golf[®]

Membership Services
64 Inverness Drive East
P.O. Box 7022, Englewood, CO 80155-7022

Golf Card Holiday Hotline: 1-800-440-3673

For delivery by Christmas, please order by: 12/2/2005

Ask for package code 09A2