

Seedling Identification Guide for Northeast Pastures

USDA ARS PSWMRU
University Park, PA



Jeff Gonet & Sarah Goslee

March 2018

<http://grazingguide.net/pages/pasture-plants.html>



Contents

<i>Acalypha virginica</i> L.	4
Virginia copperleaf	
<i>Amaranthus retroflexus</i> L.	5
redroot pigweed	
<i>Ambrosia artemisiifolia</i> L.	6
common ragweed	
<i>Barbarea vulgaris</i> W.T. Aiton	7
yellow rocket	
<i>Capsella bursa-pastoris</i> (L.) Medik.	8
shepherd's purse	
<i>Chenopodium album</i> L.	9
lambsquarters	
<i>Cichorium intybus</i> L.	10
chicory	
<i>Cirsium vulgare</i> (Savi) Ten.	11
bull thistle	
<i>Convolvulus arvensis</i> L.	12
field bindweed	
<i>Conyza canadensis</i> (L.) Cronquist	13
horseweed	
<i>Dactylis glomerata</i> L.	14
orchardgrass	
<i>Daucus carota</i> L.	15
wild carrot	
<i>Digitaria ischaemum</i> (Schreb.) Schreb. ex Muhl.	16
smooth crabgrass	
<i>Digitaria sanguinalis</i> (L.) Scop.	17
large crabgrass	
<i>Eleusine indica</i> (L.) Gaertn.	18
goosegrass	
<i>Erechtites hieraciifolia</i> (L.) Raf. ex DC.	19
pilewort	
<i>Juncus tenuis</i> Willd.	20
path rush	
<i>Lamium amplexicaule</i> L.	21
henbit	
<i>Lamium purpureum</i> L.	22
purple deadnettle	
<i>Leucanthemum vulgare</i> Lam.	23
oxeye daisy	
<i>Lobelia inflata</i> L.	24
Indian-tobacco	
<i>Mollugo verticillata</i> L.	25
carpetweed	
<i>Oenothera laciniata</i> Hill	26
cutleaf evening primrose	

Oxalis stricta L.	27
yellow woodsorrel	
Perilla frutescens (L.) Britton	28
beefsteakplant	
Phleum pratense L.	29
timothy	
Physalis heterophylla Nees	30
clammy groundcherry	
Phytolacca americana L.	31
pokeweed	
Plantago lanceolata L.	32
narrowleaf plantain	
Plantago major L.	33
broadleaf plantain	
Polygonum aviculare L.	34
prostrate knotweed	
Polygonum persicaria L.	35
lady's thumb	
Portulaca oleracea L.	36
common purslane	
Ranunculus acris L.	37
tall buttercup	
Rumex acetosella L.	38
red sorrel	
Rumex obtusifolius L.	39
broadleaf dock	
Setaria pumila (Poir.) Roem. & Schult. ssp. pumila	40
yellow foxtail	
Sida spinosa L.	41
prickly sida	
Sisymbrium officinale (L.) Scop.	42
hedgemustard	
Solanum nigrum L.	43
black nightshade	
Solidago canadensis L.	44
Canada goldenrod	
Solidago rugosa Mill.	45
rough goldenrod	
Stellaria media (L.) Vill.	46
common chickweed	
Taraxacum officinale F.H. Wigg.	47
dandelion	
Trifolium pratense L.	48
red clover	
Trifolium repens L.	49
white clover	

Verbascum blattaria L.	50
moth mullein	
Verbena urticifolia L.	51
white vervain	
Veronica peregrina L.	52
purslane speedwell	
Veronica persica Poir.	53
Persian speedwell	
Veronica serpyllifolia L.	54
thymeleaf speedwell	
Viola L.	55
violet	
References	56

***Acalypha virginica* L.**

Virginia threeseed mercury
Virginia copperleaf
mercuryweed
threeseeded mercury
wax balls

Symbol: ACVI
Group: Dicot
Duration: Annual
Growth Habit: Forb/herb
Classification:

Family Euphorbiaceae – Spurge family
Genus *Acalypha* L. – copperleaf
Species *Acalypha virginica* L. – Virginia threeseed mercury



Amaranthus retroflexus L.

redroot amaranth
 careless weed
 redroot pigweed
 rough pigweed

Symbol: AMRE
 Group: Dicot
 Duration: Annual
 Growth Habit: Forb/herb

Classification:
 Family: Amaranthaceae – Amaranth family
 Genus: Amaranthus L. – pigweed
 Species: Amaranthus retroflexus L. – redroot amaranth



Ambrosia artemisiifolia L.

Roman wormwood
 annual ragweed
 common ragweed
 low ragweed
 short ragweed
 small ragweed

Symbol: AMAR2
 Group: Dicot
 Duration: Annual
 Growth Habit: Forb/herb
 Classification:
 Family Asteraceae – Aster family
 Genus Ambrosia L. – ragweed
 Species Ambrosia artemisiifolia L. – annual ragweed



Barbarea vulgaris W.T. Aiton

garden yellow rocket
 winter cress
 yellow rocket

Symbol: BAVU
 Group: Dicot
 Duration: Biennial
 Growth Habit: Forb/herb
 Classification:

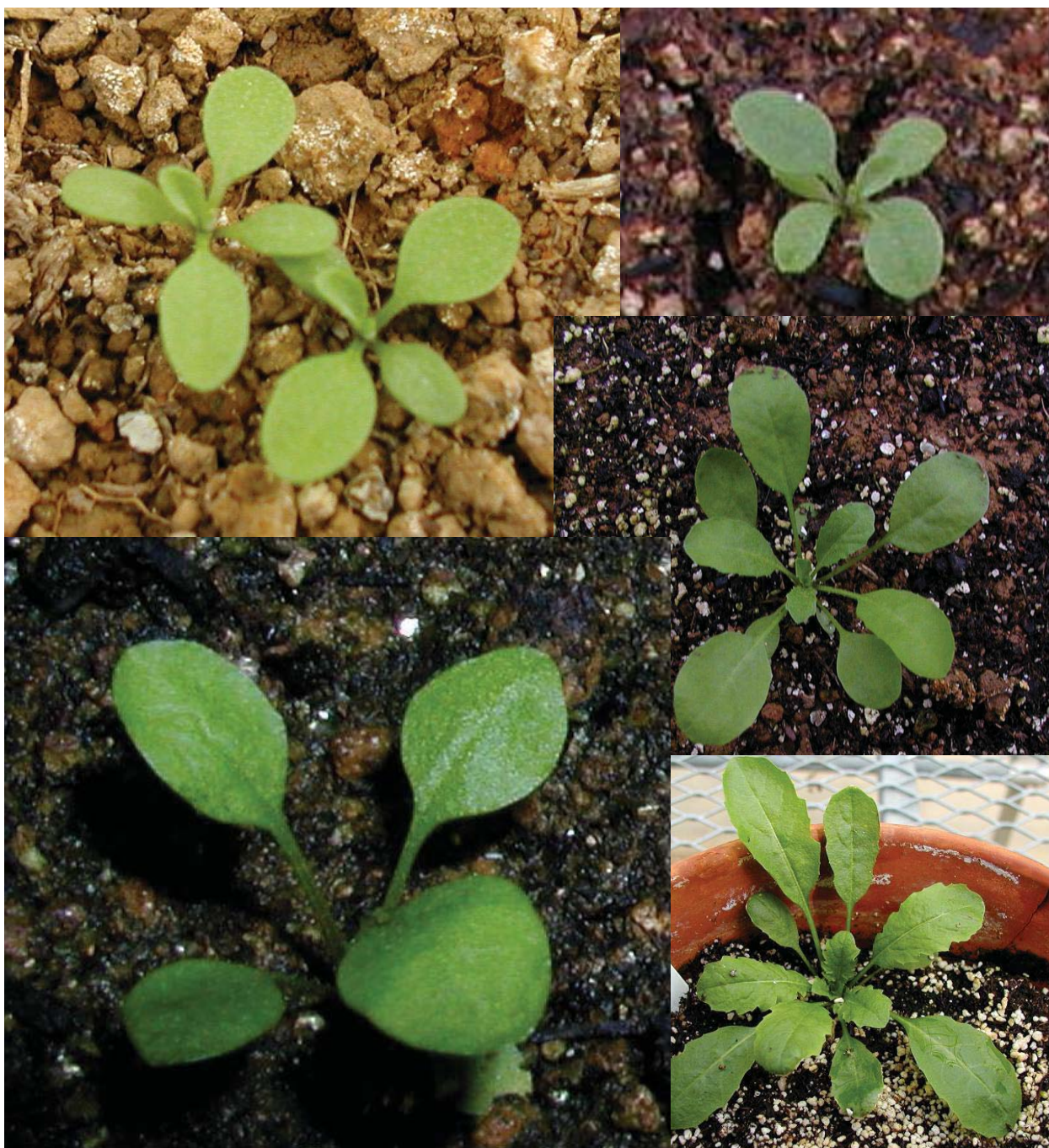
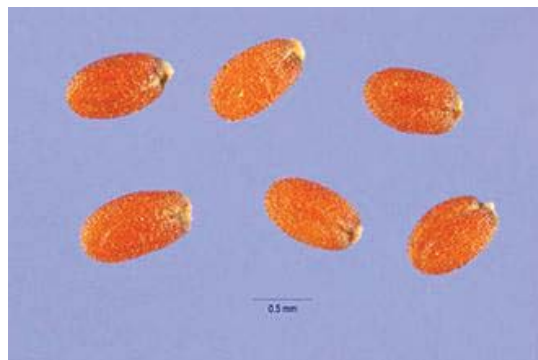
Family Brassicaceae – Mustard family
 Genus *Barbarea* W.T. Aiton – yellowrocket
 Species *Barbarea vulgaris* W.T. Aiton – garden yellowrocket



Capsella bursa-pastoris (L.) Medik.

shepherd's purse

Symbol:	CABU2
Group:	Dicot
Duration:	Annual
Growth Habit:	Forb/herb
Classification:	
Family	Brassicaceae – Mustard family
Genus	Capsella Medik. – capsella
Species	Capsella bursa-pastoris (L.) Medik. – shepherd's purse

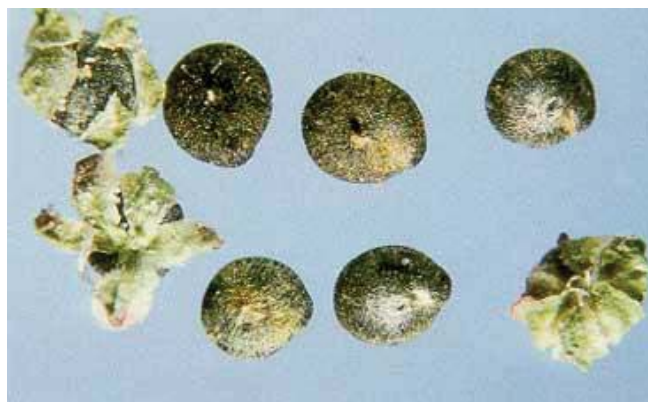


Chenopodium album L.

lambsquarters
white goosefoot

Symbol: CHAL7
Group: Dicot
Family: Chenopodiaceae
Duration: Annual
Growth Habit: Forb/herb
Classification:

Family: Chenopodiaceae – Goosefoot family
Genus: Chenopodium L. – goosefoot
Species: Chenopodium album L. – lambsquarters



Cichorium intybus L.

chicory
 blue sailors
 coffeeweed
 succory

Symbol: CIIN

Group: Dicot

Duration: Biennial

Growth Habit: Perennial

Classification: Forb/herb

Family: Asteraceae – Aster family

Genus: Cichorium L. – chicory

Species: Cichorium intybus L. – chicory



Cirsium vulgare (Savi) Ten.

bull thistle
 common thistle
 spear thistle
 thistle

Symbol:

CIVU

Group:

Dicot

Duration:

Biennial

Growth Habit:

Forb/herb

Classification:

Family

Asteraceae – Aster family

Genus

Cirsium Mill. – thistle

Species

Cirsium vulgare (Savi) Ten. – bull thistle

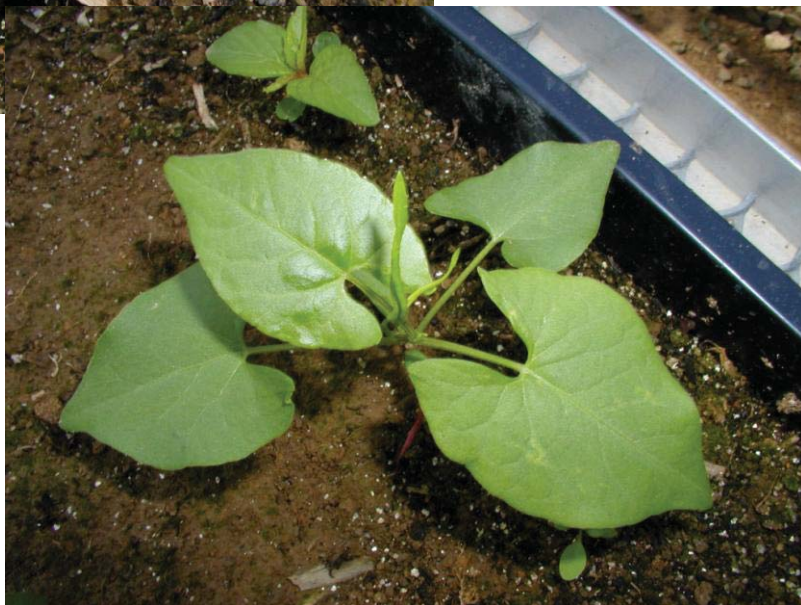


***Convolvulus arvensis* L.**

European bindweed
 creeping jenny
 field bindweed
 morningglory
 perennial morningglory
 smallflowered morning glory

Symbol: COAR4
 Group: Dicot
 Duration: Perennial
 Growth Habit: Vine
 Forb/herb

Classification:
 Family Convolvulaceae – Morning-glory family
 Genus *Convolvulus* L. – bindweed
 Species *Convolvulus arvensis* L. – field bindweed



Conyza canadensis (L.) Cronquist

Canadian horseweed
 Horseweed
 horseweed fleabane
 mares tail

Symbol: COCA5
 Group: Dicot
 Duration: Annual
 Biennial

Growth Habit: Forb/herb
 Classification:

Family Asteraceae – Aster family
 Genus *Conyza* Less. – horseweed
 Species *Conyza canadensis* (L.) Cronquist – Canadian horseweed



Dactylis glomerata L.

orchardgrass
cocksfoot

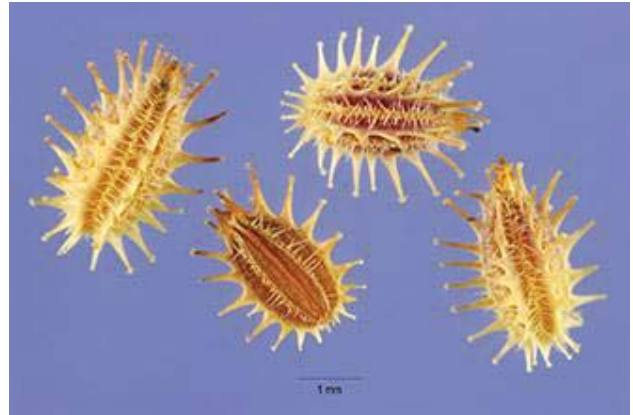
Symbol:	DAGL
Group:	Monocot
Duration:	Perennial
Growth Habit:	Graminoid
Classification:	
Family	Poaceae – Grass family
Genus	Dactylis L. – orchardgrass
Species	Dactylis glomerata L. – orchardgrass



Daucus carota L.

Queen Anne's lace
bird's nest
wild carrot

Symbol:	DACA6
Group:	Dicot
Duration:	Biennial
Growth Habit:	Forb/herb
Classification:	
Family	Apiaceae – Carrot family
Genus	Daucus L. – wild carrot
Species	Daucus carota L. – Queen Anne's lace

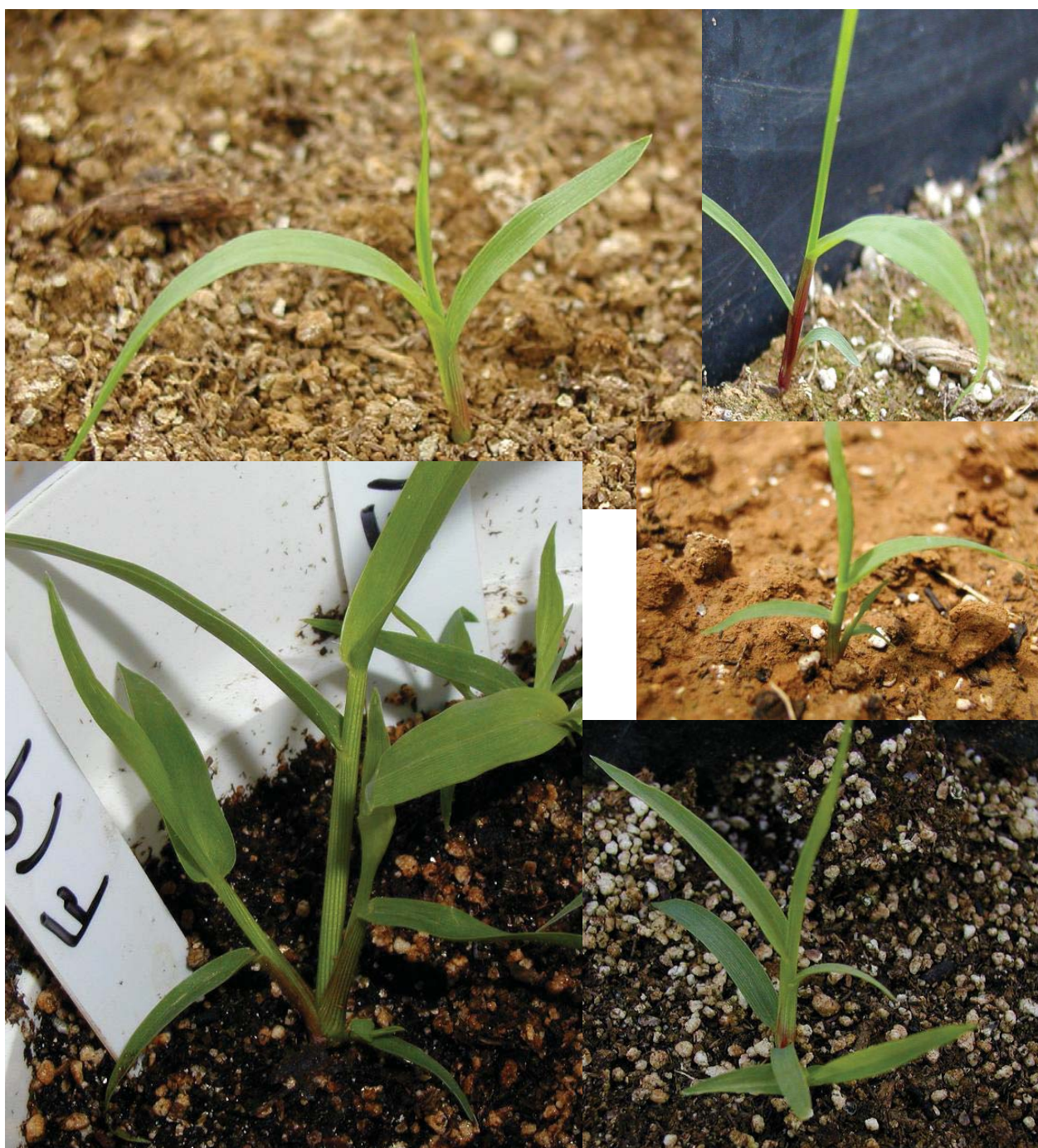


***Digitaria ischaemum* (Schreb.) Schreb. ex Muhl.**

smooth crabgrass
small crabgrass

Symbol: DIIS
Group: Monocot
Duration: Annual
Growth Habit: Graminoid
Classification:

Family: Poaceae – Grass family
Genus: *Digitaria* Haller – crabgrass
Species: *Digitaria ischaemum* (Schreb.) Schreb. ex Muhl. –smooth crabgrass



***Digitaria sanguinalis* (L.) Scop.**

hairy crabgrass
 large crabgrass
 purple crabgrass

Symbol:	DISA
Group:	Monocot
Duration:	Annual
Growth Habit:	Graminoid
Classification:	
Family	Poaceae – Grass family
Genus	<i>Digitaria</i> Haller – crabgrass
Species	<i>Digitaria sanguinalis</i> (L.) Scop. – hairy crabgrass



Eleusine indica (L.) Gaertn.

Indian goosegrass
 Goosegrass
 crowsfoot grass
 manienie ali'I
 silver crabgrass
 wiregrass

Symbol: ELIN3
 Group: Monocot
 Duration: Annual
 Growth Habit: Graminoid
 Classification:

Family Poaceae – Grass family
 Genus Eleusine Gaertn. – goosegrass
 Species Eleusine indica (L.) Gaertn. – Indian goosegrass

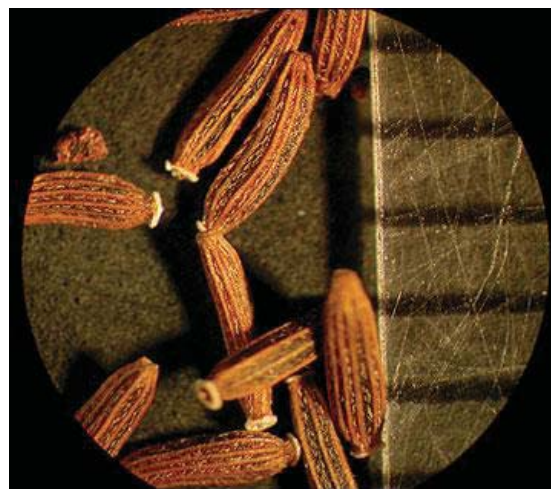


***Erechtites hieraciifolia* (L.) Raf. ex DC.**

pilewort
 American burnweed
 fireweed

Symbol: ERHI2
 Group: Dicot
 Duration: Annual
 Growth Habit: Forb/herb

Classification:
 Family: Asteraceae – Aster family
 Genus: *Erechtites* Raf. – burnweed
 Species: *Erechtites hieraciifolia* (L.) Raf. ex DC. – American burnweed



Juncus tenuis Willd.

field rush
 path rush
 poverty rush
 slender yard rush
 wiregrass

Symbol:	JUTE
Group:	Monocot
Duration:	Perennial
Growth Habit:	Graminoid
Classification:	
Family	Juncaceae – Rush family
Genus	Juncus L. – rush
Species	Juncus tenuis Willd. – poverty rush



Lamium amplexicaule L.

henbit deadnettle
henbit

Symbol: LAAM
Group: Dicot
Duration: Annual
Biennial
Growth Habit: Forb/herb

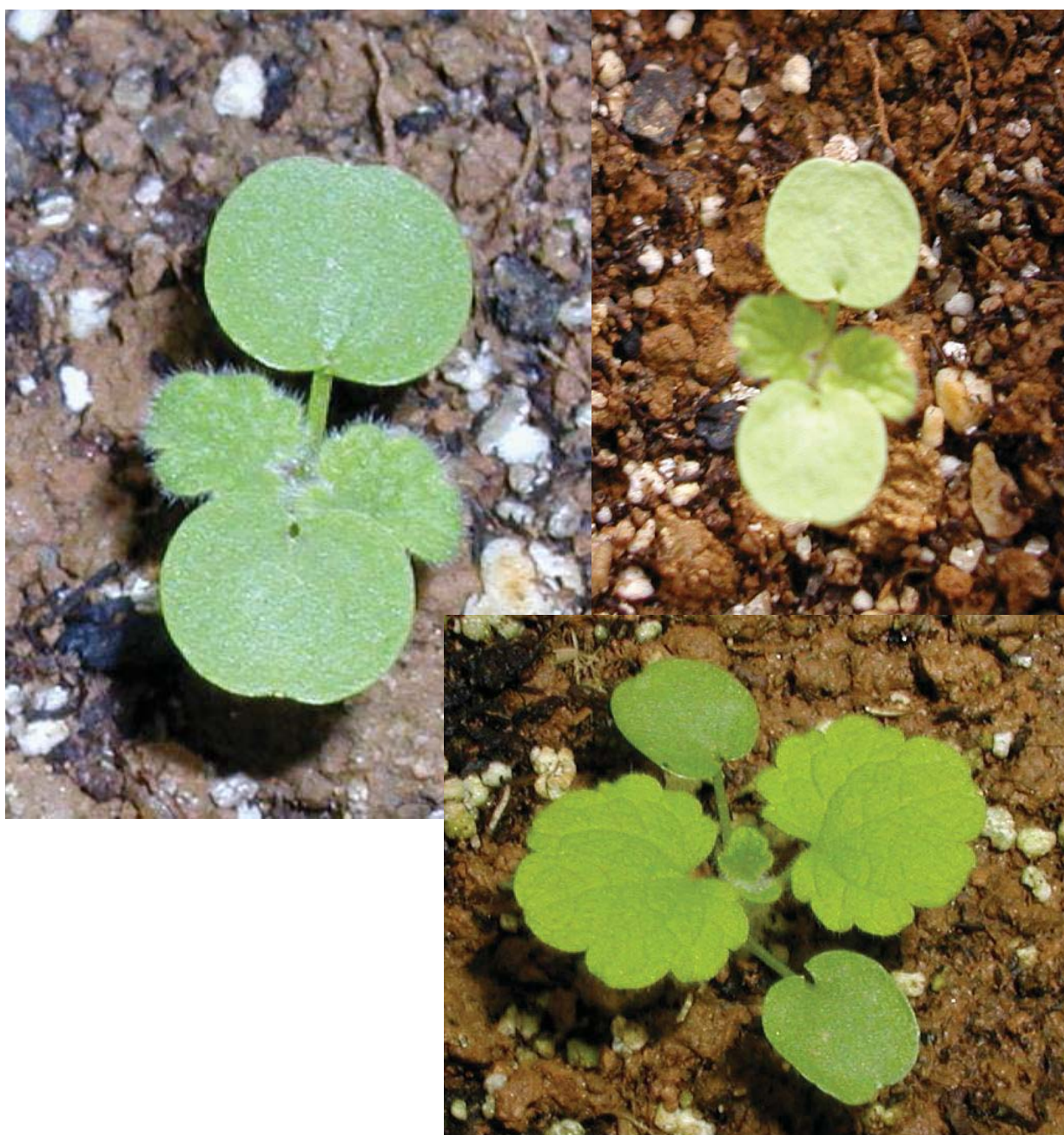
Classification:
Family Lamiaceae – Mint family
Genus Lamium L. – deadnettle
Species Lamium amplexicaule L. – henbit deadnettle



Lamium purpureum L.

purple deadnettle
red deadnettle

Symbol:	LAPU2
Group:	Dicot
Duration:	Annual
Growth Habit:	Forb/herb
Classification:	
Family	Lamiaceae – Mint family
Genus	Lamium L. – deadnettle
Species	Lamium purpureum L. – purple deadnettle



Leucanthemum vulgare Lam.

oxeye daisy
marguerite
ox-eye daisy

Symbol: LEVU
Group: Dicot
Duration: Perennial
Growth Habit: Forb/herb
Classification:

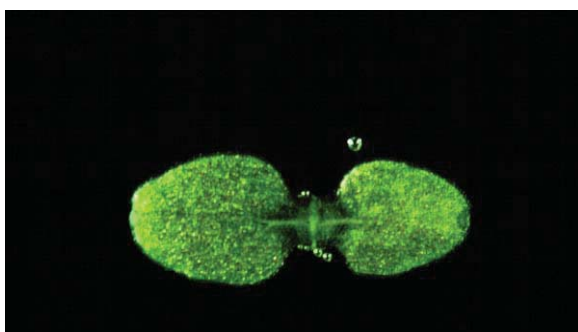
Family Asteraceae – Aster family
Genus Leucanthemum Mill. – daisy
Species Leucanthemum vulgare Lam. – oxeye daisy



Lobelia inflata L.

Indian-tobacco

Symbol:	LOIN
Group:	Dicot
Duration:	Annual
Growth Habit:	Forb/herb
Classification:	
Family	Campanulaceae – Bellflower family
Genus	Lobelia L. – lobelia
Species	Lobelia inflata L. – Indian-tobacco

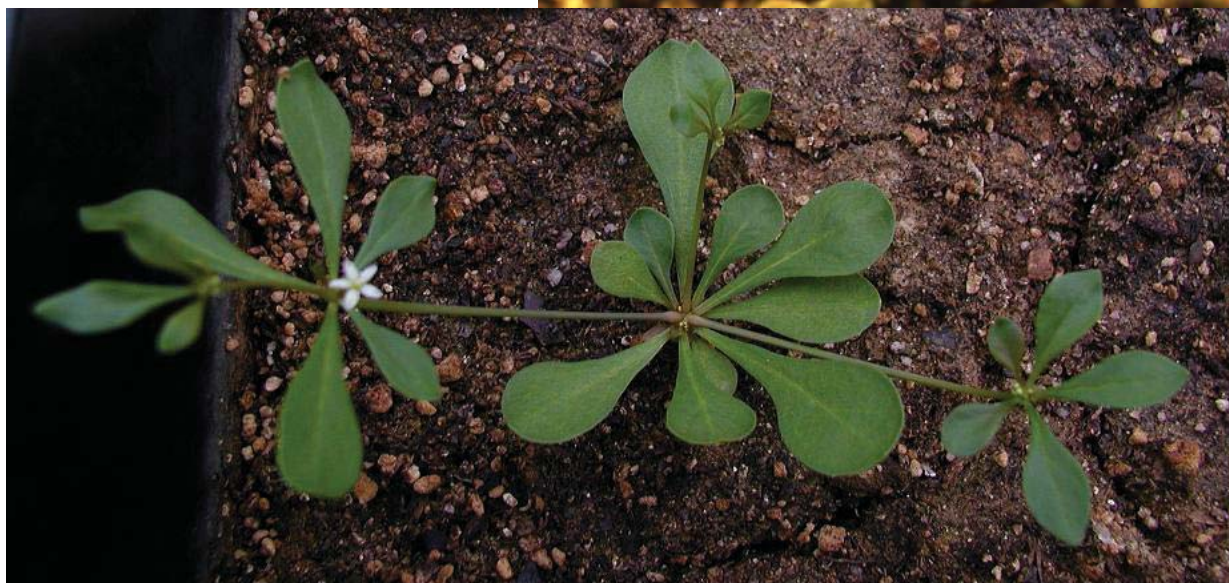
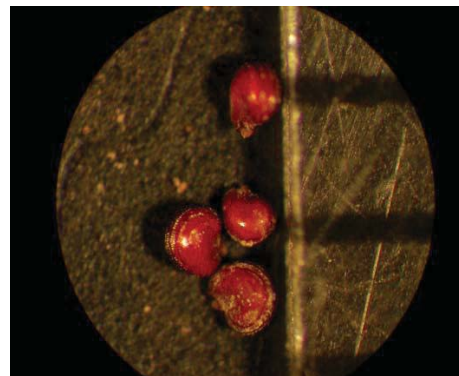


Mollugo verticillata L.

carpetweed
green carpetweed

Symbol: MOVE
Group: Dicot
Duration: Annual
Growth Habit: Forb/herb
Classification:
Family Molluginaceae – Carpet-weed family
Genus Mollugo L. – carpetweed
Species Mollugo verticillata L. – green carpetweed

Seedling key characteristics:
Cotyledons are thick
and spatula-shaped.



Oenothera laciniata Hill

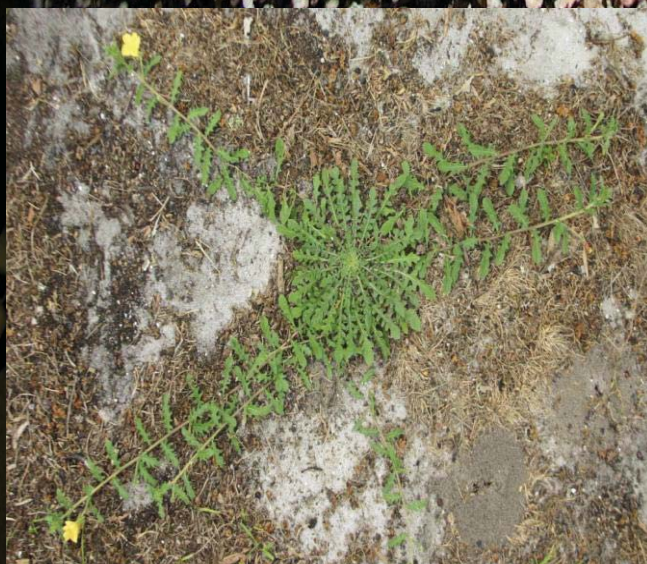
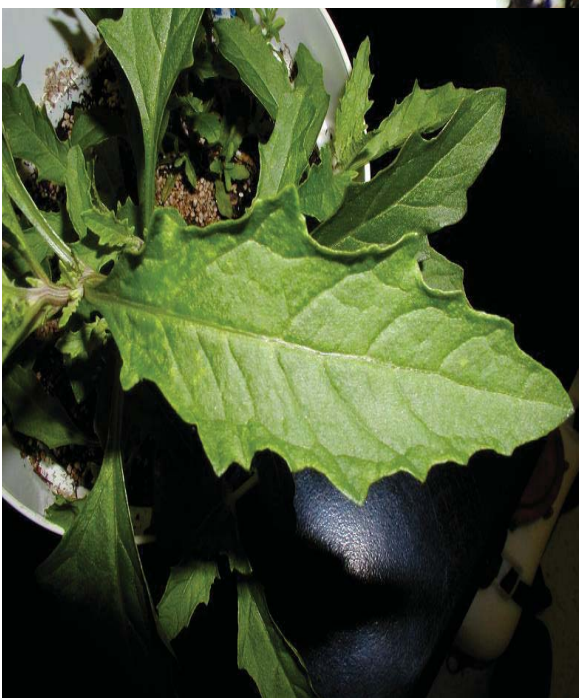
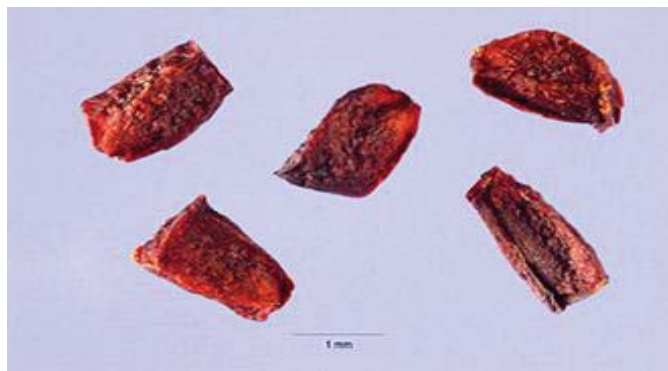
cutleaf evening primrose

Symbol: OELA
 Group: Dicot
 Duration: Annual

Growth Habit: Forb/herb

Classification:

Family Onagraceae – Evening Primrose family
 Genus Oenothera L. – evening primrose
 Species Oenothera laciniata Hill – cutleaf evening primrose



Oxalis stricta L.

common yellow oxalis
 sheep sorrel
 sourgrass
 toad sorrel
 yellow woodsorrel

Symbol: OXST
 Group: Dicot
 Duration: Perennial
 Growth Habit: Forb/herb
 Classification:

Family Oxalidaceae – Wood-Sorrel family
 Genus Oxalis L. – woodsorrel
 Species Oxalis stricta L. – common yellow oxalis



***Perilla frutescens* (L.) Britton**

beefsteakplant
beefsteak mint

Symbol:	PEFR4
Group:	Dicot
Duration:	Annual
Growth Habit:	Forb/herb
Classification:	
Family	Lamiaceae – Mint family
Genus	<i>Perilla</i> L. – perilla
Species	<i>Perilla frutescens</i> (L.) Britton – beefsteakplant



Phleum pratense L.

timothy

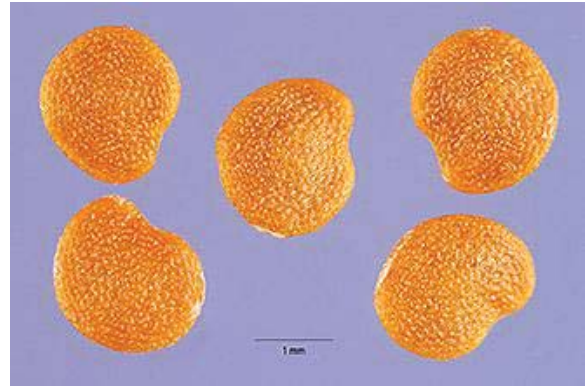
Symbol:	PHPR3
Group:	Monocot
Duration:	Perennial
Growth Habit:	Graminoid
Classification:	
Family	Poaceae – Grass family
Genus	Phleum L. – timothy
Species	Phleum pratense L. – timothy



***Physalis heterophylla* Nees**

clammy groundcherry

Symbol:	PHHE5
Group:	Dicot
Duration:	Perennial
Growth Habit:	Forb/herb
Classification:	
Family	Solanaceae – Potato family
Genus	<i>Physalis</i> L. – groundcherry
Species	<i>Physalis heterophylla</i> Nees – clammy groundcherry



***Phytolacca americana* L.**

American pokeweed
 common pokeweed
 inkberry
 pigeonberry
 pokeberry
 pokeweed

Symbol: PHAM4
 Group: Dicot
 Duration: Perennial
 Growth Habit: Forb/herb
 Classification:
 Family: Phytolaccaceae – Pokeweed family
 Genus: *Phytolacca* L. – pokeweed
 Species: *Phytolacca americana* L. – American pokeweed



Plantago lanceolata L.

narrowleaf plantain
 English plantain
 buckhorn plantain
 lanceleaf plantain
 ribgrass
 ribwort

Symbol: PLLA
 Group: Dicot
 Duration: Annual
 Biennial
 Perennial
 Growth Habit: Forb/herb

Classification:
 Family Plantaginaceae – Plantain family
 Genus Plantago L. – plantain
 Species Plantago lanceolata L. – narrowleaf plantain



Plantago major L.

common plantain
broadleaf plantain
buckhorn plantain
rippleseed plantain

Symbol: PLMA2
Group: Dicot
Duration: Perennial
Growth Habit: Forb/herb
Classification:

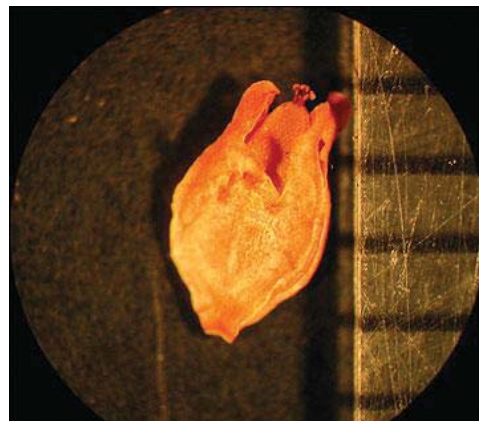
Family Plantaginaceae – Plantain family
Genus Plantago L. – plantain
Species Plantago major L. – common plantain



Polygonum aviculare L.

prostrate knotweed

Symbol:	POAV
Group:	Dicot
Duration:	Annual Perennial
Growth Habit:	Forb/herb
Classification:	
Family	Polygonaceae – Buckwheat family
Genus	Polygonum L. – knotweed
Species	Polygonum aviculare L. – prostrate knotweed



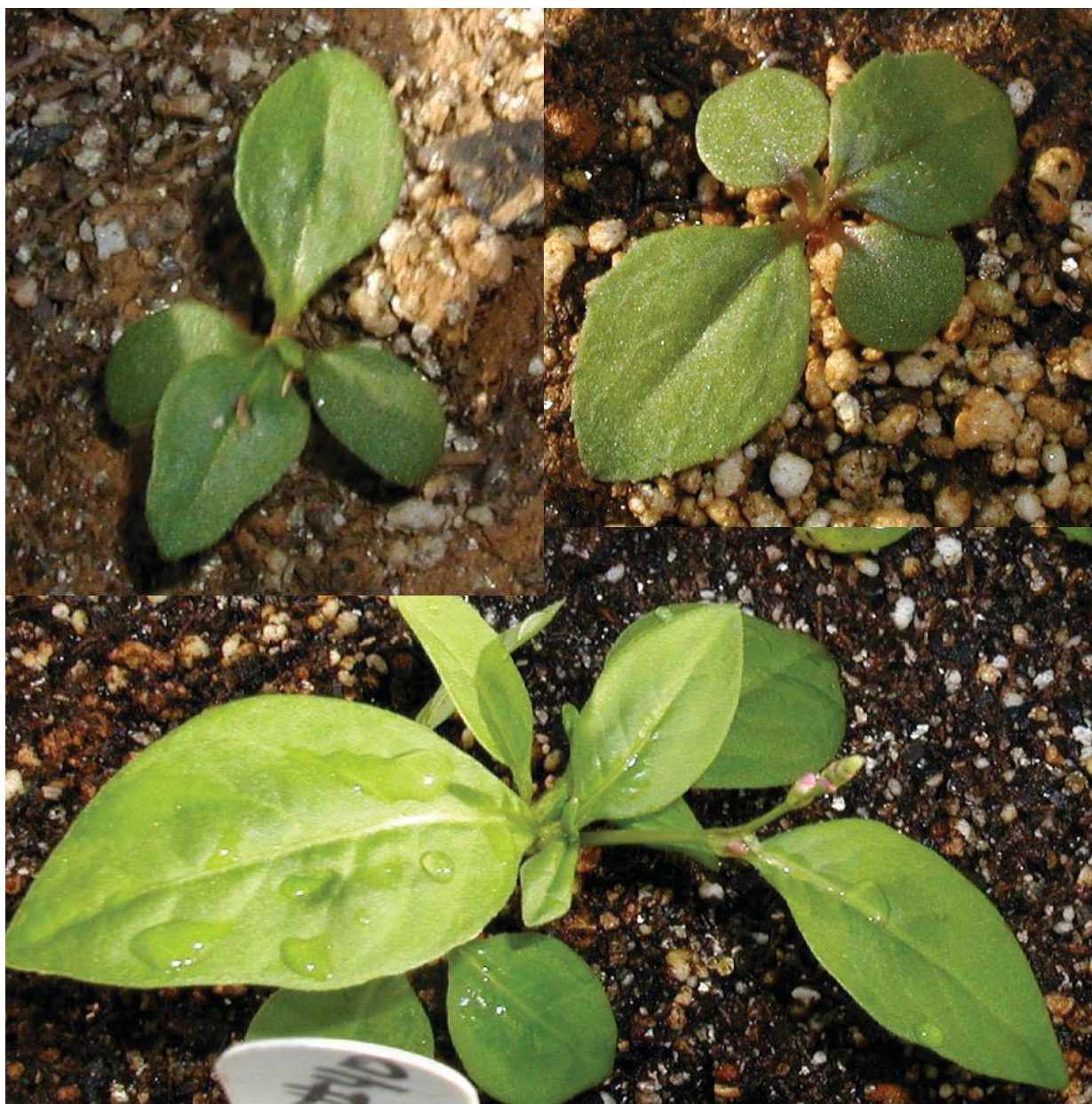
Polygonum persicaria L.

spotted ladysthumb
 lady's thumb
 ladysthumb smartweed

Symbol: POPE3
 Group: Dicot
 Duration: Annual
 Perennial
 Growth Habit: Forb/herb

Classification:

Family Polygonaceae – Buckwheat family
 Genus Polygonum L. – knotweed
 Species Polygonum persicaria L. – spotted ladysthumb

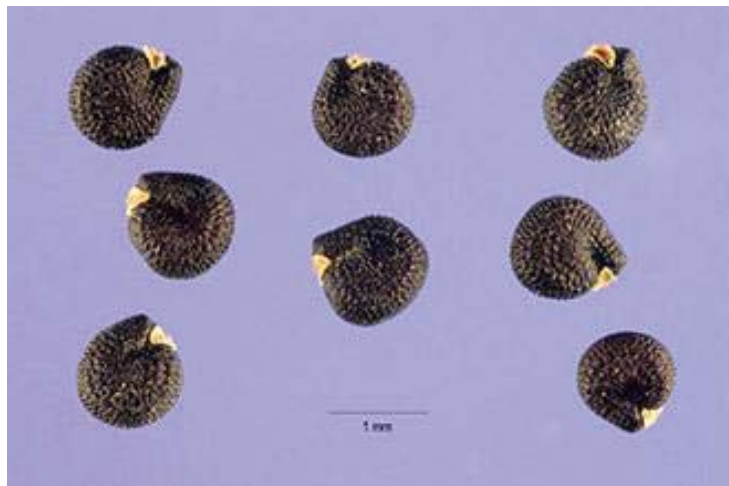


Portulaca oleracea L.

common purslane
 duckweed
 pursley
 pusley
 wild portulaca
 little hogweed

Symbol: POOL
 Group: Dicot
 Duration: Annual
 Growth Habit: Forb/herb
 Classification:

Family: Portulacaceae – Purslane family
 Genus: Portulaca L. – purslane
 Species: Portulaca oleracea L. – little hogweed



Ranunculus acris L.

tall buttercup
meadow buttercup

Symbol: RAAC3
Group: Dicot
Duration: Perennial
Growth Habit: Forb/herb
Classification:
Family Ranunculaceae – Buttercup family
Genus Ranunculus L. – buttercup
Species Ranunculus acris L. – tall buttercup

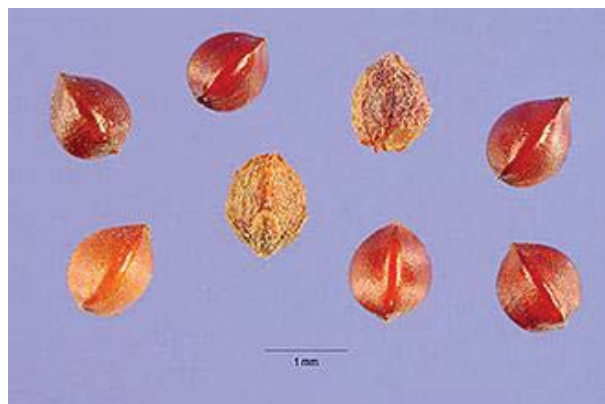


Rumex acetosella L.

field sorrel
red sorrel
sheep sorrel

Symbol: RUAC3
Group: Dicot
Duration: Perennial
Growth Habit: Forb/herb
Classification:

Family Polygonaceae – Buckwheat family
Genus Rumex L. – dock
Species Rumex acetosella L. – common sheep sorrel



Copyright © 2007 The Regents of the University of California. All



1550213

Rumex obtusifolius L.

broadleaf dock
bitter dock
Rumex

Symbol: RUOB
Group: Dicot
Duration: Perennial
Growth Habit: Forb/herb
Classification:

Family Polygonaceae – Buckwheat family
Genus Rumex L. – dock
Species Rumex obtusifolius L. – bitter dock

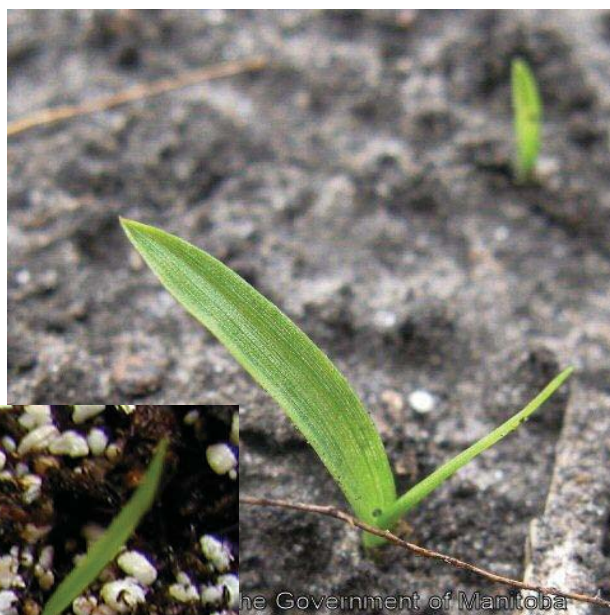


Setaria pumila (Poir.) Roem. & Schult. ssp. *pumila*

yellow foxtail
yellow bristlegrass
pigeon grass
wild millet

Symbol: SEPUP2
Group: Monocot
Duration: Annual
Growth Habit: Graminoid
Classification:

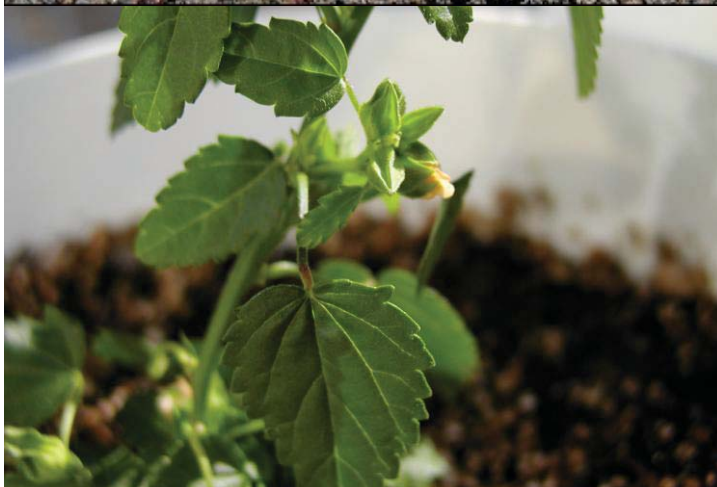
Family Poaceae – Grass family
Genus *Setaria* P. Beauv. – bristlegrass
Species *Setaria pumila* (Poir.) Roem. & Schult. – yellow foxtail
Subspecies *Setaria pumila* (Poir.) Roem. & Schult. ssp. *pumila* – yellow foxtail



Sida spinosa L.

prickly fanpetals
prickly sida

Symbol:	SISP
Group:	Dicot
Duration:	Annual Perennial
Growth Habit:	Subshrub Forb/herb
Classification:	
Family	Malvaceae – Mallow family
Genus	Sida L. – fanpetals
Species	Sida spinosa L. – prickly fanpetals

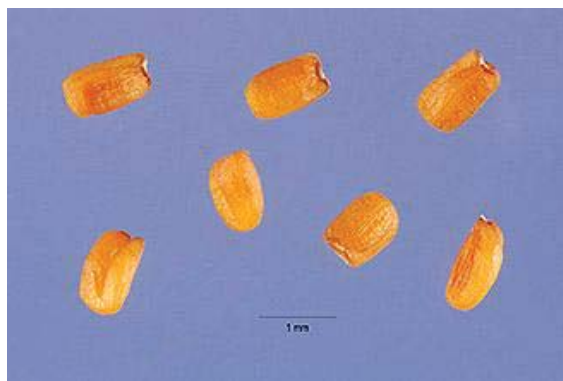


Sisymbrium officinale (L.) Scop.

hedgemustard
hedgeweed

Symbol: SIOF
Group: Dicot
Duration: Annual
Growth Habit: Forb/herb
Classification:

Family Brassicaceae – Mustard family
Genus *Sisymbrium* L. – hedgemustard
Species *Sisymbrium officinale* (L.) Scop. – hedgemustard



Solanum nigrum L.

black nightshade
 deadly nightshade
 garden nightshade

Symbol: SONI
 Group: Dicot
 Duration: Annual
 Perennial
 Growth Habit: Subshrub
 Forb/herb

Classification:
 Family Solanaceae – Potato family
 Genus Solanum L. – nightshade
 Species Solanum nigrum L. – black nightshade



Solidago canadensis L.

Canada goldenrod
common goldenrod

Symbol:	SOCA6
Group:	Dicot
Duration:	Perennial
Growth Habit:	Forb/herb
Classification:	
Family	Asteraceae – Aster family
Genus	Solidago L. – goldenrod
Species	Solidago canadensis L. – Canada goldenrod



UGA5105072

***Solidago rugosa* Mill.**

wrinkleleaf goldenrod
 rough goldenrod
 tall hairy goldenrod

Symbol:	SORU2
Group:	Dicot
Duration:	Perennial
Growth Habit:	Forb/herb
Classification:	
Family	Asteraceae – Aster family
Genus	<i>Solidago</i> L. – goldenrod
Species	<i>Solidago rugosa</i> Mill. – wrinkleleaf goldenrod



***Stellaria media* (L.) Vill.**

common chickweed

Symbol: STME2
 Group: Dicot
 Duration: Annual
 Perennial
 Growth Habit: Forb/herb

Classification:

Family Caryophyllaceae – Pink family
 Genus *Stellaria* L. – starwort
 Species *Stellaria media* (L.) Vill. – common chickweed



Taraxacum officinale F.H. Wigg.

common dandelion
 blowball
 dandelion
 faceclock

Symbol:

TAOF

Group:

Dicot

Duration:

Perennial

Growth Habit:

Forb/herb

Classification:

Family

Asteraceae – Aster family

Genus

Taraxacum F.H. Wigg. – dandelion

Species

Taraxacum officinale F.H. Wigg. – common dandelion



Trifolium pratense L.

red clover

Symbol:	TRPR2
Group:	Dicot
Duration:	Biennial Perennial
Growth Habit:	Forb/herb
Classification:	
Family	Fabaceae – Pea family
Genus	Trifolium L. – clover
Species	Trifolium pratense L. – red clover



Trifolium repens L.

Dutch clover
ladino clover
white clover

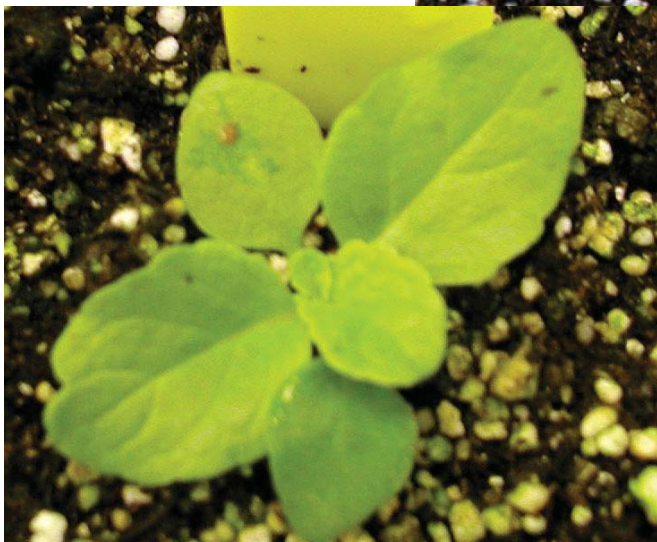
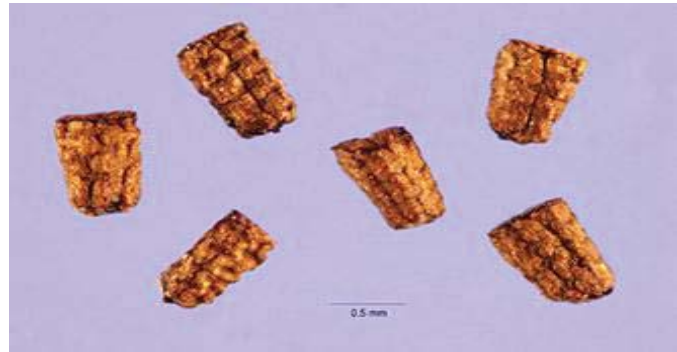
Symbol:	TRRE3
Group:	Dicot
Duration:	Perennial
Growth Habit:	Forb/herb
Classification:	
Family	Fabaceae – Pea family
Genus	Trifolium L. – clover
Species	Trifolium repens L. – white clover



Verbascum blattaria L.

moth mullein

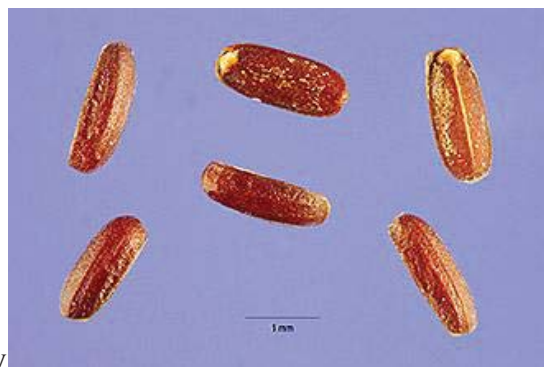
Symbol:	VEBL
Group:	Dicot
Duration:	Biennial
Growth Habit:	Forb/herb
Classification:	
Family	Scrophulariaceae – Figwort family
Genus	Verbascum L. – mullein
Species	Verbascum blattaria L. – moth mullein



***Verbena urticifolia* L.**

white vervain

Symbol:	VEUR
Group:	Dicot
Duration:	Perennial
Growth Habit:	Forb/herb
Classification:	
Family	Verbenaceae – Verbena family
Genus	<i>Verbena</i> L. – vervain
Species	<i>Verbena urticifolia</i> L. – white vervain



Veronica peregrina L.

neckweed
purslane speedwell

Symbol: VEPE2
Group: Dicot
Duration: Annual
Growth Habit: Forb/herb
Classification:

Family Scrophulariaceae – Figwort family
Genus Veronica L. – speedwell
Species Veronica peregrina L. – neckweed



Veronica persica Poir.

Persian speedwell
birdeye speedwell
winter speedwell

Symbol: VEPE3
Group: Dicot
Duration: Annual
Growth Habit: Forb/herb
Classification:

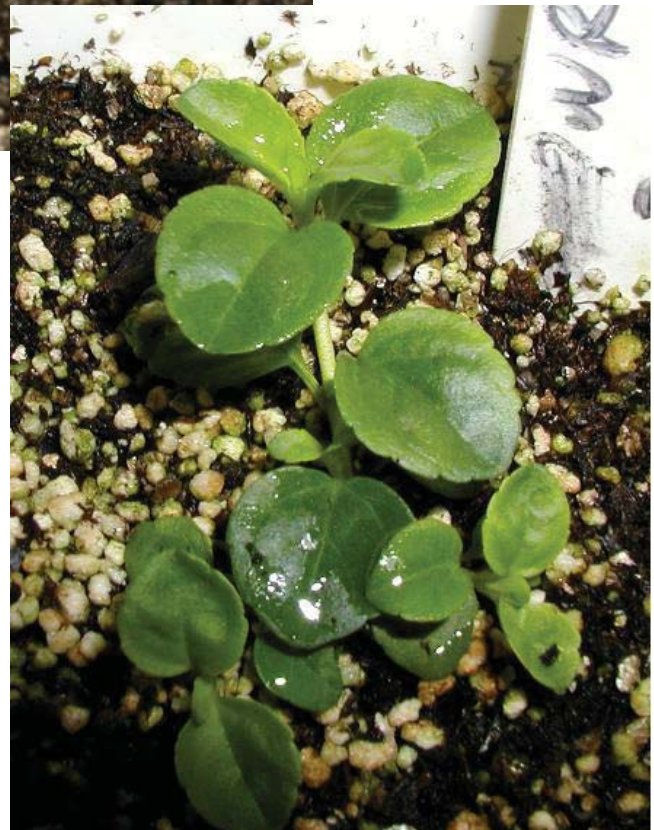
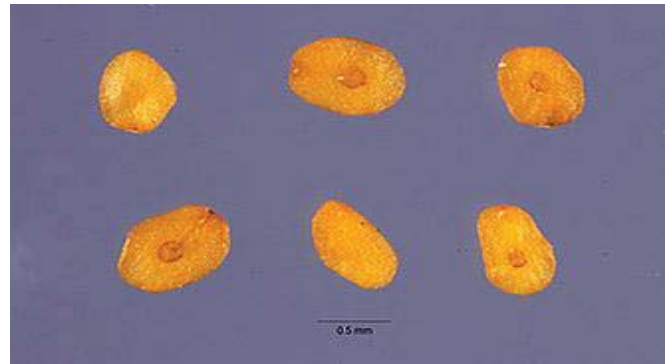
Family Scrophulariaceae – Figwort family
Genus Veronica L. – speedwell
Species Veronica persica Poir. – birdeye speedwell



Veronica serpyllifolia L.

thymeleaf speedwell

Symbol:	VESE
Group:	Dicot
Duration:	Perennial
Growth Habit:	Forb/herb
Classification:	
Family	Scrophulariaceae – Figwort family
Genus	Veronica L. – speedwell
Species	Veronica serpyllifolia L. – thymeleaf speedwell



Viola L.

violet

Symbol:

VIOLA

Group:

Dicot

Duration:

Growth Habit:

Classification:

Family

Violaceae – Violet family

Genus

Viola L. – violet



References

Jeff Gonet and Keith Klement of USDA ARS PSWMRU, University Park, Pa. Majority of photos come from seedbank studies on intensively grazed dairy farms in the Northeast.

Steve Hurst, The PLANTS Database (<http://plants.usda.gov>, 8 March 2010). National Plant Data Center, Baton Rouge, LA 70874-4490 USA. (seed pictures).

University of Missouri Extension, IPM1023 "Missouri Weed Seeds" Fred Fishel Kevin Bradley Department of Agronomy IPM1007, "Practical Weed Science for the Field Scout: Corn and Soybeans" (horseweed, pilewort, carpetweed, prickly sida, and prostrate knotweed seed; horseweed, goosegrass, prickly sida, wild carrot, and purslane seedling)

Davis, L. W. 1993. Weed Seeds of the Great Plains. (lambsquarter seed).

Andrew Simon, Department of Biology, College of Natural Sciences, Carleton University, 1125 Colonel By Drive, Ottawa, Ontario, K1S 5B6, Canada. (lobelia seedling).

Prairie Moon Nursery, Inc 2010. (Indian tobacco seed).

Larry Burrell and Jed Colquhoun photo Collection. Photos Credit: Oregon State University. (horseweed and oxeye seedlings).

Diagnostic Services at Michigan State University, 101 Center for Integrated Plant Systems, East Lansing, MI 48824-1311. (pokeweed seedlings).

University of Illinois Turfgrass Program. "Midwestern Turfgrass Weed Identification and Control" (purslane seedling).

Ohio State Weed Lab Archive, The Ohio State University, contact: Catherine Herms. (ragweed, red sorrel, buttercup, white vervain, wild carrot, lambsquarters, goldenrod, and henbit seedlings).

Joseph M. DiTomaso Statewide IPM Program, Agriculture and Natural Resources, University of California. (red sorrel, and thymeleaf speedwell seedlings).

Virginia Tech Weed Identification Guide www.ppws.vt.edu/scott/weed_id/accvi.htm. (Virginia copperleaf seedling).

LSU Ag Center Research and Extension, Grass and Other Weeds of Louisiana. (foxtail seedling).

The U.S. Department of Agriculture (USDA) prohibits discrimination in all its programs and activities on the basis of race, color, national origin, age, disability, and where applicable, sex, marital status, familial status, parental status, religion, sexual orientation, genetic information, political beliefs, reprisal, or because all or part of an individual's income is derived from any public assistance program. (Not all prohibited bases apply to all programs.) Persons with disabilities who require alternative means for communication of program information (Braille, large print, audiotape, etc.) should contact USDA's TARGET Center at (202) 720-2600 (voice and TDD). To file a complaint of discrimination, write to USDA, Director, Office of Civil Rights, 1400 Independence Avenue, S.W., Washington, D.C. 20250-9410, or call (800) 795-3272 (voice) or (202) 720-6382 (TDD). USDA is an equal opportunity provider and employer.