



Gigaset C385

GIGASET HELPLINE: 0845 3670812

Gigaset



- 1 one Gigaset C385 base
- 2 one mains adapter
- 3 one Gigaset C38H handset
- 4 one phone cord
- 5 two batteries
- 6 one battery cover
- 7 one belt clip
- 8 one user guide plus one quick start guide
- 9 one charging cradle

If you have purchased a model with multiple handsets the package should contain two batteries, a battery cover, a belt clip and a charging cradle 8 with mains adapter 9 for each additional handset.



- ▶ First connect the mains adapter 1.
- ▶ Then connect the telephone jack 2 and insert the cables into the cable ducts.

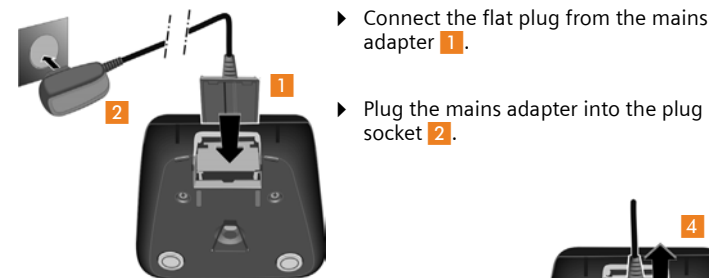


Please note:

- ◆ The mains adapter must always be connected, as the phone will not operate without a mains connection.
- ◆ Only use the mains adapter and phone cord supplied. Pin connections on telephone cables can vary.
- ◆ The **[\*]**-key should light up at the base station. If not, please ensure the power lead is fully inserted.



Connecting the charging cradle (if included)



If you need to disconnect the plug from the charging cradle, press the release button 3 and disconnect the plug 4.



To ensure your product is set up correctly please check the following

- ◆ Have you used phone cord supplied
- ◆ Have you fully inserted the power cable into base station
- ◆ Have you inserted batteries correctly
- ◆ Have you charged the batteries for 11 hours
- ◆ Have you set up Date/Time

PLEASE NOTE:

For a dial tone press the call button **[\*]** for approx. 2 seconds. Short press opens redial list.

Message Indication Key **[\*]** on handset will flash to indicate one or all of the following events:

- ◆ missed calls (if caller ID is enabled for your line numbers will be shown)
- ◆ new messages on the answering machine (also indicated by flashing light on base station)
- ◆ new Text messages (SMS) received

If you have problems setting up or operation this product please call

**GIGASET HELPLINE**  
0845 3670812



Issued by Gigaset Communications GmbH, Schlavenhorst 66, D-46395 Bocholt. Gigaset Communications GmbH is a trademark licensee of Siemens AG. © Gigaset Communications GmbH 2009. All rights reserved. Subject to availability. Rights of modification reserved. www.gigaset.com

Preparing the handset

- ▶ Insert the batteries the right way round. The polarity is indicated in/on the battery compartment.



- ▶ First insert the battery cover at the top (a).
- ▶ Then press the cover (b) until it clicks into place.

If you need to open the battery cover, for instance to replace the batteries, place your fingertip in the cavity on the casing and pull the battery cover upwards.



Initial charging and discharging of the batteries

The correct charge level can only be displayed if the batteries are first fully charged and discharged.

- ▶ Place the handset in the base/charging cradle for eleven hours.

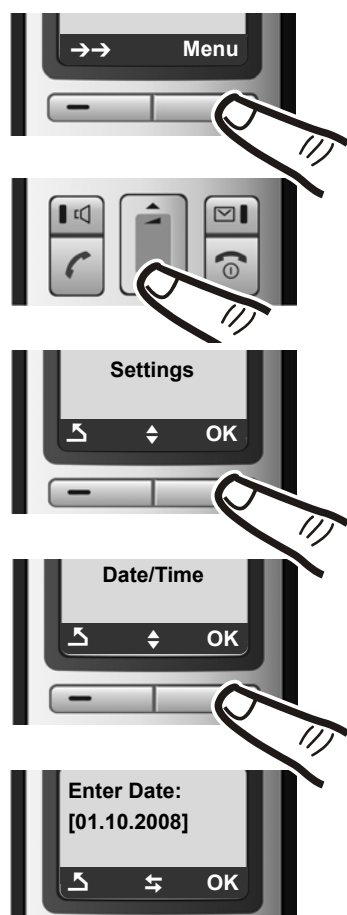


- ▶ Then remove the handset from the base/charging cradle and do not replace it until the batteries are fully discharged.



Setting the date and time

Set the date and time so that the correct date and time can be assigned to incoming calls, and so that the alarm can be used.



- ▶ Press the key below **[Menu]** on the display screen to open the main menu.

- ▶ Press the bottom of the control key ...

... until the Settings menu item appears.

- ▶ Press the key below **[OK]** on the display screen to confirm your selection.

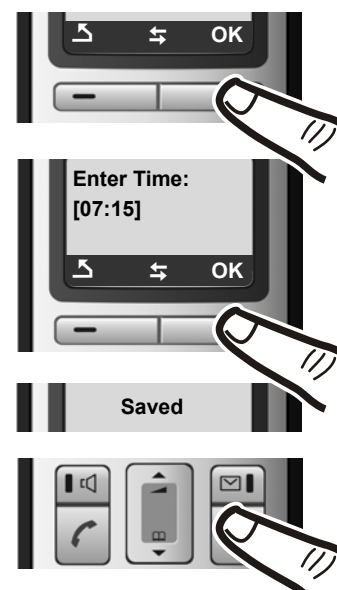
The Date/Time menu item appears on the display.

- ▶ Press the key below **[OK]** on the display screen to open the input field.

- ▶ The active line is marked [...]. Enter day, month and year as an 8-digit number via the handset, e.g. **[0+][1+][0+][1+][0+][0+]** for 01/10/08.

Setting the date and time

If you want to correct an entry, press the top or bottom of the control key to toggle between fields.



- ▶ Press the key below **[OK]** on the display screen to confirm your selection.

- ▶ Enter the hours and minutes as four digit numbers via the handset e.g. **[0+][7+][1+][5+]** for 7:15 hours. If necessary, use the control key to toggle between fields.

- ▶ Press the key below **[OK]** on the display screen to confirm your selection.

The display shows Saved. You will hear a confirmation tone.

- ▶ Press and hold the end call key **[\*]** to return to the idle status.

Display in idle status

- ◆ Reception signal between the base and handset (green: Eco Mode activated):
  - good to poor: **[signal icons]**
  - no reception: **[flashes]**
- ◆ **[∞]**: answering machine is activated
- ◆ Battery charge status:
  - **[empty battery icon]** (empty to full)
  - **[flashes]**: batteries almost empty
  - **[charging battery icon]** flashes: charging procedure

If Eco Mode+ is activated, the **[Eco Mode icon]** is displayed in the top left (see chapter "ECO DECT" of user manual).



Frequently asked questions

**Q: There is no dial tone.**

A: Press call button for 2 seconds (long press) to obtain dial tone. A short press opens the redial list.

**Q: The line is crackling / not clear.**

A: Have you used the new line cable provided? Please do not use an old cable.

**Q: Message indicator flashing on handset and I cannot retrieve my message.**

A: Message indicator will flash to indicate missed call as well as new message or text message. Please check it is not indicating a new missed call or text message.

**Q: The caller ID is not functioning.**

A: Have you subscribed to this service (CLIP) from your provider?

**Q: Can I record my own announcement on the answer machine.**

A: Yes. Please refer to Chapter "Operating the answer machine of the Gigaset C385 base station" of your user manual (p. 35).

**Q: The display is not clear.**

A: The display is protected by a plastic film, please make sure you have removed the protective film.

**Q: The handset is not registered.**

A: If your handset is not registered, please refer to Chapter "Registering handsets" of your user manual (p. 41) to instructions how to register handsets manually.

For more QUESTIONS AND ANSWERS please refer to chapter "Service (Customer Care)" of user manual (p. 49).