

# PrintPAD™ Integrated Printing System

Product Guide for Resellers ■ ■ ■



datamax·o'neil  
right by our customers.



|   |    |
|---|----|
| Introduction . . . . .                      | 1  |
| Selling Points . . . . .                    | 3  |
| Markets and Applications . . . . .          | 5  |
| <br><b>PrintPAD MC70/75</b>                 |    |
| Printer Tour . . . . .                      | 7  |
| Technical Specifications . . . . .          | 9  |
| Competitive Overview . . . . .              | 10 |
| <br><b>PrintPAD CN3, CN3e, CN4 and CN4e</b> |    |
| Printer Tour . . . . .                      | 11 |
| Technical Specifications . . . . .          | 13 |
| Competitive Overview . . . . .              | 14 |
| <br><b>PrintPAD 99EX</b>                    |    |
| Printer Tour . . . . .                      | 15 |
| Technical Specifications . . . . .          | 17 |
| <br>Consumables . . . . .                   |    |
| Software . . . . .                          | 18 |
| Frequently Asked Questions . . . . .        | 19 |
| Warranty Options . . . . .                  | 20 |
| Ordering - PrintPADs . . . . .              | 22 |
| Ordering - Accessories . . . . .            | 23 |
| Ordering - Accessories . . . . .            | 25 |

*Brand and product names are trademarks, service marks, registered trademarks, or registered service marks of their respective companies.*

### About Datamax-O'Neil

*Datamax-O'Neil is the global provider who works passionately with customers to listen, understand and then deliver a value-driven printing solution that minimizes risk and maximizes efficiency, safety, and quality.*



The company's products address a wide variety of applications, including those in the industrial, healthcare, retail, automotive and ticketing market sectors. Datamax-O'Neil is headquartered in Orlando, Florida, and maintains key facilities in California, Illinois, and France, as well as sales and technical support offices around the world.

### Product Lines

Datamax-O'Neil pioneered the development of bar code and label printers, and today is one of the world's leading providers with the industry's most extensive portfolio of portable and stationary printers and supplies.



### The PrintPAD™

Datamax-O'Neil's PrintPAD offers mobile workers the convenience of a portable printer and handheld digital computer united in a compact and ergonomic, rugged and reliable unit. The sleek design of the PrintPAD allows users to carry, charge and communicate in a single integrated package, and is the ideal solution for route accounting, direct store delivery and other field mobile applications.

The PrintPAD offers the mobile workforce a single unit in which to carry their handheld and their Datamax-O'Neil 4" printer. The PrintPAD also charges both the printer and the handheld, eliminating the need to purchase and maintain multiple AC adaptors and chargers. Finally, the PrintPAD provides effortless and reliable communication between the handheld and the printer. An integral Bluetooth option gives mobile workers the ability to communicate with the printer wirelessly when the handheld device is not residing in the PrintPAD.

The PrintPAD also includes an optional built-in magnetic swipe card reader allowing for the easy collection of credit or debit card payments. Users can quickly determine the printer's Bluetooth, charging and power status with the PrintPAD's external LEDs. For direct store delivery applications, optional DEX capabilities are available, allowing communication via DEX connections with no special software or mechanical switches.

The ultra-rugged PrintPAD printer can print up to 2,240 - 6" long receipts on a single battery charge with automated power-saving, sleep, and wake-up modes. It prints top-quality 80-column condensed font receipts, graphics, and international fonts, on direct thermal paper and labels, with 4MB of Flash and 2MB of RAM.



### Simplify Daily Operations: Carry, Charge, Communicate

#### ■ Carry

The PrintPAD is designed to simplify your daily operations. With the PrintPAD, users carry both their handheld computer and printer in one convenient well-designed unit. Using a single integrated product eliminates the hassle of juggling multiple devices and decreases the chance of dropping or misplacing a device in the field. The PrintPAD also provides another layer of protection to your handheld computer.

#### ■ Charge

The PrintPAD provides a smart recharging solution by charging both the handheld and the printer at the same time from a single AC or car adaptor. That means you have half the adaptors to buy and keep track of on the road. This is not only convenient for workers in the field but also reduces the cost associated with purchasing and maintaining multiple charging devices.

#### ■ Communicate

The PrintPAD provides seamless communication between the handheld computer and printer. When the handheld is in the cradle, it communicates directly with the printer. An integral Bluetooth option gives mobile workers the ability to communicate with the printer wirelessly when the handheld device is not residing in the PrintPAD. The optional DEX port makes DEX connections to central distributors easy without the need for special software or mechanical switches.



### Comfort and Ease of Use

PrintPAD, with its integrated carry strap or optional shoulder strap, is designed for maximum user comfort. The PrintPAD simply “wakes up” automatically when data is received so there are no buttons or switches required for operation. After printing, the unit returns to “sleep” mode to conserve battery life without any user intervention. For added convenience, the PrintPAD also offers a larger battery and larger media capacity to keep your applications up and running.

### Rugged & Reliable

PrintPAD offers a proven design with over 15 years of product refinement and an uncompromising standard for reliability. The PrintPAD was engineered to thrive in even the most punishing environments. All PrintPADs are tested rigorously for ruggedness and reliability. In fact, Datamax-O'Neil offers the only “PrintPAD” type device with a published 6-foot drop specification. It's easy to see why Datamax-O'Neil is also the only company to include a two year standard warranty.

### Cost Effective

In today's competitive market, the purchase cost and the cost to maintain a solution is critically important.

- The PrintPAD saves you money by offering a unit with serial connectivity that still allows for easy communication between the handheld computer and the printer. The handheld and the printer are in communication whenever the handheld is in the cradle even without Bluetooth connectivity.
- Since the PrintPAD charges both the printer and handheld computer from a single AC or car adaptor, you have less adaptors and communication cables to purchase and maintain.
- Batteries are included in the price when you purchase a PrintPAD. Hidden charges like batteries can add a significant amount to the total purchase price.
- Datamax-O'Neil's reputation for reliability and the PrintPAD's proven design will keep your printers in the field, your application efficient and profitable and most importantly, your customers happy.
- The PrintPAD comes with a 2-year standard warranty that covers the printer, the case and even the printhead.\* That's double what the competition offers and an important part of the total cost of ownership.  
*\*2-year warranty covers the printhead when used with approved media.*



The PrintPAD integrated printing system works in the most rugged environments to enable the production of hardcopy back-ups of digital information and signature printing, as well as the generation of receipts, tickets and labels for a variety of applications.

The sleek design of the PrintPAD allows users to conveniently and securely carry their mobile computer, communicate with the printer, as well as charge both the mobile computer and the printer, all in a single integrated package. This innovative one piece printer system combines an enhanced 4" wide thermal printer, the 4te, with an embedded communications charging cradle that works with the Motorola (MC70 and MC75 Series), Honeywell (Dolphin 99EX), and Intermec (CN3, CN3e, CN4 and CN4e) handheld computers.

### Field Services

Whether mobile workers are providing a service or delivering goods, organizations can profit by having accurate documentation of their pickups, deliveries, maintenance, inventories, routes/labor scheduling and reporting. Having customers wait while the technician fills out a handwritten form or goes out to the truck for paperwork wastes time and drastically increases the chances for errors. An automated application will reduce errors, improve technician and office efficiencies and increase customer satisfaction.

All field service operations have some type of documentation that can be streamlined and made significantly more efficient through the use of the PrintPAD. The PrintPAD, with its integrated carry strap, is designed for maximum user comfort. It is up to 35% lighter than competitive units and includes Datamax-O'Neil's legendary reliability. Changing media and charging the printer or handheld is difficult when your office is the front seat of a car or truck. We've made it easier by including a larger media capacity and longer battery life. And, for the ultimate in convenience, the PrintPAD charges both the printer and handheld from a single AC adaptor or cigarette lighter. That means you have half the adaptors to buy and keep track of on the road.



### Route Accounting & Direct Store Delivery (DSD)

In route accounting or direct store delivery environments, getting products to the customer in the most efficient manner possible and having an accurate record of each delivery is critical. A portable route accounting solution reduces errors, improves driver and office efficiencies and increases customer satisfaction. But, all that success will screech to a halt if the printer breaks down. Downtime not only ruins your customer's day, but can significantly impact profitability.



The PrintPAD is ideal for route accounting where printers and mobile computers take a beating. The rugged compact design protects the printer and computer while providing seamless communication and offering the convenience of charging both from a single source. That means you have half the adaptors to buy and keep track of on the road. The PrintPAD is a proven design with over 15 years of evolving designs, and an unparalleled reputation for product reliability. This is critical because equipment failure disables operation in the field. And, like all Datamax-O'Neil thermal printers, the PrintPAD includes the industry's only 2-year standard warranty for portable printers ensuring you the highest ROI of any printer on the market.

### Rugged Mobile Point-of-Sale (POS)

Mobile point-of-sale systems are increasingly popular for use in supermarkets, restaurants, hotels, stadiums and casinos, as well as almost any type of retail establishment. They offer businesses the advantage of taking payments and issuing receipts separately from traditional payment kiosks or even in isolated areas such as parking lots.

The PrintPAD, when combined with the mobile computer, offers workers the ability to scan items, take credit card payment and issue a customer receipt anywhere on the premises (requires optional insertion magnetic stripe card reader). The convenient integrated carry strap allows workers to comfortably carry the PrintPAD while helping customers throughout the location. And, its integrated design provides seamless communication between the printer and computer. The PrintPAD provides outstanding print quality for receipts, rain checks and coupons, and features optional Bluetooth wireless connectivity and compliance with today's security standards.

### Law Enforcement

Municipalities lose revenue when law enforcement issues handwritten tickets that are illegible or unclear; some cities estimate they lose millions each year in unpaid fines. When officers manually write tickets, many never get entered into the system because of errors. For example, if an officer forgets to include a date or vehicle make, it gets bounced from the system. When using an automated system, the officer is prompted for every piece of information and they can't continue until they enter all the proper information.

The PrintPAD makes it simple for law enforcement to capture what has transpired in detail. Officers can scan vehicle registration stickers, print tickets, and upload the information to a central database.

Signatures can be captured on the handheld computer then automatically printed onto the citation.

The PrintPAD has the durability and reliability to endure the elements that parking officers face everyday while improving efficiencies and increasing revenue.



## PrintPAD MC70/75

### ■ Front View



### ■ Back View



## PrintPAD MC70/75

### ■ Internal



## PrintPAD MC70/75

| Physical                            |   |
|-------------------------------------|---|
| Dimensions                          | 11.8" x 7.5" x 2.4"<br>(299.7 x 190.5 x 60.96 mm)   |
| Weight<br>(with Battery & Handheld) | 60.67 oz (1.72 kg)  |
| Drop Specification                  | 4 ft (1.22 m)   |
| User Environment                    |   |
| Operating Temperature               | -4° F to 122° F (-20° C to 50° C)   |
| Storage Temperature                 | -40° F to 158° F (-40° C to 70° C)  |
| Charging Temperature                | 41° F to 104° F (5° C to 40° C)   |
| Relative Humidity                   | 10% to 90% non-condensing   |
| Communications                      |   |
| Serial                              | Standard RS232 (460.8 kbps)   |
| Bluetooth                           | Option (version 1.2)  |
| DEX                                 | Option  |
| Print Technology                    |   |
| Printhead                           | Direct thermal, 203 dots per inch<br>(8 dots per mm)  |
| Print Width                         | 4.10" (104 mm)  |
| Print Mechanism Speed               | 2" per second   |
| Media Specifications                |   |
| Type                                | Direct thermal receipt paper:<br>standard, premium, heavy duty,<br>long-life, image protect, hi-temp,<br>all weather, synthetic, UV coated.<br>Limited label support. |
| Capacity                            | 1,680" (43 m)<br>2.25" (57 mm) max roll diameter<br>0.4" (10 mm) I.D. core  |
| Width                               | 4.41" (112 mm)  |

| Battery   |   |
|---|---|
| Type  | Lithium-Ion                                 |
| Capacity  | (2) 7.2 V, 2200 mAh<br>(total 4400 mAh)     |
| Endurance   | Bluetooth: 6,900" or<br>1,150 - 6" receipts |
| On printer charging                                     | External Charge Port                        |
| Recharge time   | 7 - 9 hours                                 |
| Handheld Recharging                                     | 4 hours                                     |
| Memory  |   |
| Flash / RAM   | 4MB / 2MB                                   |
| Fonts   |   |
| Resident bitmap fonts from 5.5 to 34 character per inch |   |
| Warranty  |   |
| Printer   | 2 years                                     |
| Printhead   | 2 years with approved media                 |
| Options   |   |
| Bluetooth (v1.2)  | ✓   |
| Magnetic card reader                                    | ✓   |
| Chargers, serial cables                                 | ✓   |
| DEX   | ✓   |
| User Interface  |   |
| Charge Indicator  | External                                    |
| Wireless Connection Indicator                           | External                                    |
| Media Error Indicator                                   | External                                    |
| Audio Indicator   | Standard                                    |
| Agency Approvals  |   |
| FCC B, CE, UL/cUL, CB Scheme                            |   |

# Competitive Overview ■ ■ ■

## Datamax-O'Neil PrintPAD MC70/75 vs. Zebra RW420 Route Palette

- The PrintPAD MC70/75 is about 30% lighter with a more ergonomic design for lasting comfort than Zebra Route Palette.
- The PrintPAD MC70/75 is physically smaller than Zebra Route Palette, making it easier to use and carry.
- The PrintPAD MC70/75 has a 2 year standard warranty; tha's double what Zebra offers.
- The PrintPAD MC70/75 offers a larger print capacity than Zebra Route Palette.

### Summary:

Compared to the competitor, Datamax-O'Neil's PrintPAD MC70/75 is lighter, more comfortable, offers a larger print capacity and includes twice the warranty at no additional cost to the customer.



PrintPAD MC70/75



RW420 Route Palette

| Physical                         |   |   |
|----------------------------------|---|---|
| Dimensions                       | 11.8" x 7.5" x 2.4" (299.7 x 190.5 x 60.96 mm)  | 13.62" x 11.89" x 3.2" (345.9 x 302 x 81.3 mm)  |
| Weight (with battery & handheld) | 60.67 oz (1.72 kg)  | 85.36 oz (2.42 kg)  |
| Drop Specification               | 4 ft (1.22 m)   | 4 ft (1.22 m)   |
| User Environment                 |   |   |
| Operating Temperature            | -4° F to 122° F (-20° C to 50° C)   | -4° F to 131° F (-20° C to 55° C)   |
| Storage Temperature              | -40° F to 158° F (-40° C to 70° C)  | -22° F to 149° F (-30° C to 65° C)  |
| Charging Temperature             | 41° F to 104° F (5° C to 40° C)   | 32° F to 104° F (0° C to 40° C)   |
| Relative Humidity                | 10% to 90% non-condensing   | 10% to 90% non-condensing   |
| Communications                   |   |   |
| Serial                           | Standard RS232 (460.8 kbps)   | Standard RS232  |
| Bluetooth                        | Option (version 1.2)  | Standard  |
| DEX                              | Option  | Standard  |
| Print Technology                 |   |   |
| Printhead                        | Direct thermal, 203 dots per inch (8 dots per mm)   | Direct thermal, 203 dots per inch (8 dots per mm)   |
| Print Width                      | 4.10" (104 mm)  | 4.09" (104 mm)  |
| Print Mechanism Speed            | 2" per second   | 3" per second (76.2 mm/sec)   |
| Media Specifications             |   |   |
| Direct Thermal Media             | Direct thermal receipt paper: standard, premium, heavy duty, long-life, image protect, hi-temp, all weather, synthetic, UV coated. Limited label support. | Direct thermal receipt paper, synthetic media, UV coated  |
| Capacity                         | 1,680' (43 m) [2.25" (57 mm) maximum roll diameter]<br>0.4" (10 mm) I.D. core   | 1,320' (33.5 m) [2.25" (57 mm) maximum roll diameter]<br>0.75" (19 mm) or 1.38" (35 mm) I.D. core |
| Width                            | 4.41" (112 mm)  | 4.12" (105 mm)  |
| Battery                          |   |   |
| Type                             | Lithium-Ion / (2) 7.2V, 2200mAh (total 4400 mAh)  | Lithium-Ion / 7.4V, 4.0 A-H   |
| Endurance                        | 6,900' or 1,150 - 6" receipts (Bluetooth Model)   | not published   |
| On printer charging              | ✓ (external charge port)  | ✓ (external charge port)  |
| Recharge time                    | 7 - 9 hours   | not published   |
| Handheld Recharging              | 4 hours   | not published   |
| User Interface                   |   |   |
| Charge Indicator                 | ✓ (external)  | ✓   |
| Wireless Connection Indicator    | ✓ (external)  | ✓   |
| Media Error Indicator            | ✓ (external)  | ✓   |
| Audio Indicator                  | ✓ (standard)  | ✓   |
| Memory                           |   |   |
| Flash / RAM                      | 4 MB / 2 MB   | 4 MB / 8 MB   |
| Fonts                            |   |   |
|                                  | Resident bitmap fonts from 5.5 to 34 characters per inch  | 25 bitmapped, 1 smooth, scalable  |
| Warranty                         |   |   |
| Printer / Printhead              | 2 years / 2 years with approved media   | 1 year / not published  |
| Options                          |   |   |
| Bluetooth (v1.2)                 | ✓ (version 1.2)   | ✓   |
| DEX                              | ✓   | ✓   |
| Magnetic card reader             | ✓   | ✓   |
| Chargers, serial cables          | ✓   | ✓   |

## CN3, CN3e, CN4 and CN4e

### ■ Front View



### ■ Back View



## PrintPAD CN3, CN3e, CN4 and CN4e

### ■ Internal



## PrintPAD CN3, CN3e, CN4 and CN4e

| Physical                            |  |
|-------------------------------------|--|
| Dimensions                          | 11.8" x 7.5" x 2.4"<br>(299.7 x 190.5 x 60.96 mm)  |
| Weight<br>(with Battery & Handheld) | 60.67 oz (1.72 kg)   |
| Drop Specification                  | 6 ft (1.83 m)  |
| User Environment                    |  |
| Operating Temperature               | -4° F to 122° F (-20° C to 50° C)  |
| Storage Temperature                 | -40° F to 158° F (-40° C to 70° C)   |
| Charging Temperature                | 41° F to 104° F (5° C to 40° C)  |
| Relative Humidity                   | 10% to 90% non-condensing  |
| Communications                      |  |
| Serial                              | USB 2.0<br>Standard RS232 (460.8 kbps)   |
| Bluetooth                           | Option (version 1.2)   |
| DEX                                 | Option   |
| Print Technology                    |  |
| Printhead                           | Direct thermal, 203 dots per inch<br>(8 dots per mm)   |
| Print Width                         | 4.10" (104 mm)   |
| Print Mechanism Speed               | 2" per second  |
| Media Specifications                |  |
| Type                                | Direct thermal receipt paper:<br>standard, premium, heavy duty,<br>long-life, image protect,<br>hi-temp, all weather, synthetic,<br>UV coated; linerless labels.<br>Limited label support. |
| Capacity                            | 1,680" (43 m)<br>2.25" (57 mm) max roll diameter<br>0.4" (10 mm) I.D. core   |
| Width                               | 4.41" (112 mm)   |

| Battery   |  |
|---|--|
| Type  | Lithium-Ion  |
| Capacity  | (2) 7.2 V, 2200 mAh<br>(total 4400 mAh)                |
| Endurance   | Bluetooth: 8,184" or<br>1,320 - 6.2" (157 mm) receipts |
| On printer charging                                     | External Charge Port                                   |
| Recharge time   | 7 - 9 hours  |
| Handheld Recharging                                     | 5 hours  |
| Memory  |  |
| Flash / RAM   | 4MB / 2MB  |
| Fonts   |  |
| Resident bitmap fonts from 5.5 to 34 character per inch |  |
| Warranty  |  |
| Printer   | 2 years  |
| Printhead   | 2 years with approved media                            |
| Options   |  |
| Bluetooth (v1.2)  | ✓  |
| Magnetic card reader                                    | ✓  |
| Chargers, serial cables                                 | ✓  |
| DEX   | ✓  |
| User Interface  |  |
| Charge Indicator  | External   |
| Wireless Connection Indicator                           | External   |
| Media Error Indicator                                   | External   |
| Audio Indicator   | Standard   |
| Agency Approvals  |  |
| FCC B, CE, UL/cUL, CB Scheme                            |  |



# Competitive Overview ■ ■ ■

## Datamax-O'Neil PrintPAD CN3, CN3e, CN4 and CN4e vs. Intermec PW50

- The PrintPAD CN3, CN3e, CN4 and CN4e is about 35% lighter than the Intermec PW50.
- The PrintPAD CN3, CN3e, CN4 and CN4e comes with batteries already installed while Intermec requires a separate battery purchase for the PW50.
- The PrintPAD CN3, CN3e, CN4 and CN4e has a 2 year standard warranty; tha's double what Intermec offers.

### Summary:

Datamax-O'Neil's PrintPAD CN3, CN3e, CN4 and CN4e are lighter than the PW50 and are ready to be used out of the box without any additional accessories. Plus, with Datamax-O'Neil's reliability, the PrintPAD has a proven design that includes a 2-year warranty for worry-free performance and satisfied customers!



PrintPAD CN3, CN3e, CN4 and CN4e



PW50

| Physical                         |  |   |
|----------------------------------|--|---|
| Dimensions                       | 11.8" x 7.5" x 2.4" (299.7 x 190.5 x 60.96 mm)   | 12.2" x 7" x 3.2" (309.9 x 177.8 x 81.3 mm)   |
| Weight (with battery & handheld) | 38.55 oz (1.1 kg)  | 59.5 oz (1.59 kg)   |
| Drop Specification               | 6 ft (1.83 m)  | 4 ft (1.22 m)   |
| User Environment                 |  |   |
| Operating Temperature            | -4° F to 122° F (-20° C to 50° C)  | -4° F to 122° F (-20° C to 50° C)   |
| Storage Temperature              | -40° F to 158° F (-40° C to 70° C)   | -22° F to 158° F (-30° C to 70° C)  |
| Charging Temperature             | 41° F to 104° F (5° C to 40° C)  | 32° F to 104° F (0° C to 40° C)   |
| Relative Humidity                | 10% to 90% non-condensing  | 10% to 90% non-condensing   |
| Communications                   |  |   |
| Serial                           | Standard RS232 (460.8 kbps)  | Standard RS232C (115 kbps)  |
| Bluetooth                        | Option (version 1.2)   | Standard (class 1)  |
| DEX                              | Option   | Standard  |
| Print Technology                 |  |   |
| Printhead                        | Direct thermal, 203 dots per inch (8 dots per mm)  | Direct thermal, 203 dots per inch (8 dots per mm)   |
| Print Width                      | 4.10" (104 mm)   | 4.25" (108 mm)  |
| Print Mechanism Speed            | 2" per second  | 4" per second (101.6 mm/sec)  |
| Media Specifications             |  |   |
| Direct Thermal Media             | Receipt paper: standard, premium, heavy duty, long-life, image protect, hi-temp, all weather, synthetic, UV coated; linerless label Limited label support. | Direct thermal receipt paper in both top coated and uncoated (continuous roll stock only)                     |
| Capacity                         | 1,680" (43 m) [2.25" (57 mm) maximum roll diameter] 0.4" (10 mm) I.D. core   | 1,884" (47 m) [2.65" (67.3 mm) maximum roll diameter] 0.75" (19 mm) Standard; 0.4" (10 mm) Optional I.D. core |
| Width                            | 4.41" (112 mm)   | 4.4" (112 mm)   |
| Battery                          |  |   |
| Type                             | Lithium-Ion / (2) 7.2V, 2200mAh (total 4400 mAh)   | Lithium-Ion (must be ordered separately) / 14.8V, 2200 mAh  |
| Endurance                        | 8,184" or 1,320 - 6.2" (157 mm) receipts (Bluetooth Model)   | not published   |
| On printer charging              | ✓ (external charge port)   | ✓ (external charge port)  |
| Recharge time                    | 7 - 9 hours  | 6 hours   |
| Handheld Recharging              | 5 hours  | not published   |
| User Interface                   |  |   |
| Charge Indicator                 | ✓ (external)   | ✓   |
| Wireless Connection Indicator    | ✓ (external)   | ✓   |
| Media Error Indicator            | ✓ (external)   | ✓   |
| Audio Indicator                  | ✓ (standard)   | ✓   |
| Memory                           |  |   |
| Flash / RAM                      | 4MB / 2 MB   | 64 MB / 16 MB   |
| Fonts                            |  |   |
|                                  | Resident bitmap fonts from 5.5 to 34 characters per inch   | 40, 80, 132 column (normal and bold)  |
| Warranty                         |  |   |
| Printer / Printhead              | 2 years / 2 years with approved media  | 1 year / not published  |
| Options                          |  |   |
| Bluetooth (v1.2)                 | ✓ (version 1.2)  | ✓ (class1)  |
| DEX                              | ✓  | ✓   |
| Magnetic card reader             | ✓  | ✓   |
| Chargers, serial cables          | ✓  | ✓   |

## PrintPAD 99EX

### ■ Front View



### ■ Back View



## PrintPAD 99EX

### ■ Internal



## PrintPAD 99EX

| Physical                                   |   |
|--|---|
| Dimensions                                 | 7.5" x 11.8" x 2.4"<br>(190.5 mm x 299.7 mm x 60.9 mm)  |
| Weight<br>(with Battery, Paper & Handheld) | With 99EX Standard battery; 63.5 oz (1.8kg)<br>With 99EX Extended battery; 66.12 oz (1.87kg)  |
| Drop Specification                         | 6 ft. (1.83 m) tested with handheld   |
| User Environment                           |   |
| Operating Temperature                      | -4° F to 122° F (-20° C to 50° C)   |
| Storage Temperature                        | -40° F to 158° F (-40° C to 70° C)  |
| Charging Temperature                       | 41° F to 104° F (5° C to 40° C)   |
| Relative Humidity                          | 10% to 90% non-condensing   |
| Communications                             |   |
| Serial                                     | RS-232; up to 460.8 kbps  |
| Bluetooth                                  | Supported versions: v1.2<br>(compatible with v1.1 devices)  |
| DEX  | Option  |
| Print Technology                           |   |
| Printhead                                  | Direct thermal, 203 dots per inch<br>(8 dots per mm)  |
| Print Width                                | 4.10" (104.1mm)   |
| Print Mechanism Speed                      | 2" per second   |
| Media Specifications                       |   |
| Type                                       | Direct thermal receipt paper:<br>standard, premium, heavy duty,<br>long-life, image protect,<br>hi-temp, all weather, synthetic,<br>UV coated. Limited label support. |
| Capacity                                   | 2.25" (57.15mm)<br>0.4" (10.16mm) I.D. core   |
| Width                                      | 4.41" (112 mm)  |

| Battery   |  |
|---|--|
| Type  | Lithium-Ion  |
| Capacity  | (2) 7.2 V, 2200 mAh<br>(total 4400 mAh)                |
| Endurance   | Bluetooth: 8,184" or<br>1,320 - 6.2" (157 mm) receipts |
| On printer charging                                     | External Charge Port                                   |
| Recharge time   | 7 - 9 hours  |
| Handheld Recharging                                     | 4 - 6 hours  |
| Memory  |  |
| Flash / RAM   | 4MB / 2MB  |
| Fonts   |  |
| Resident bitmap fonts from 5.5 to 34 character per inch |  |
| Warranty  |  |
| Printer   | 2 years  |
| Printhead   | 2 years with approved media                            |
| Options   |  |
| Bluetooth (v1.2)  | ✓  |
| Magnetic card reader                                    | ✓  |
| Chargers, serial cables                                 | ✓  |
| DEX   | ✓  |
| User Interface  |  |
| Charge Indicator  | External   |
| Wireless Connection Indicator                           | External   |
| Media Error Indicator                                   | External   |
| Audio Indicator   | Standard   |
| Agency Approvals  |  |
| FCC B, CE, UL/cUL, CB Scheme                            |  |

The world's most reliable printer deserves the most reliable printer supplies. When you choose Datamax-O'Neil, you receive our proven commitment to quality. Quality that results in performance and compatibility - guaranteed! Our seven grades of materials are specifically designed for your PrintPAD. They are designed to support most thermal applications and when used with the PrintPAD, can dramatically extend the life of its thermal printhead.



1. **Standard** – General purpose material grade offering clean, crisp dark images
2. **Premium** – Higher sensitivity that is ideal for barcode applications and printouts
3. **Heavy-Duty** – Thicker grade for durability
4. **Long-life** – Image life is guaranteed to last 25 years (achievability)
5. **Image Protect** – Top coated paper grade to withstand abrasion
6. **Hi-Temp** – Paper grade is specifically designed to withstand high temperatures
7. **All Weather** – Film based grade that is waterproof with maximum strength and durability for any outdoor environment



**datamax · o'neil**  
CERTIFIED SUPPLIES

## Direct Thermal Receipt Paper

| Printer Compatibility   | Part Number | Type          | Size         | Carton Quantity |
|---|-------------|---------------|--------------|-----------------|
| PrintPAD MC9000,<br>PrintPAD MC70/75,<br>PrintPAD CN3, CN3e,<br>CN4 and CN4e<br>PrintPAD Dolphin 99EX | 740524-101  | Standard      | 4.40" x 140' | 50              |
|   | 740524-102  | Premium       | 4.40" x 125' | 50              |
|   | 740524-103  | Heavy Duty    | 4.40" x 92'  | 50              |
|   | 740524-104  | Long Life     | 4.40" x 132' | 50              |
|   | 740524-105  | Image Protect | 4.40" x 93'  | 50              |
|   | 740524-106  | Hi-Temp       | 4.40" x 93'  | 50              |
|   | 740524-107  | All Weather*  | -n/a-        | 50              |

\*Custom run

If you do not see the media grade you're looking for, contact Datamax-O'Neil Printer Supplies Representative.

Datamax-O'Neil offers many software products to complement your management tools and to ease deployment and configuration.

### Datamax-O'Neil Printer Development Incorporation Suite (OPDI)

OPDI is a suite of three software components: (a) the Printer Loader allows you to configure your printer, (b) the Printer Script Builder allows you to create printer builder scripts for easy roll out of a single custom configured solution across many units, and (c) the Printer Demo allows you to show the functionality of Datamax-O'Neil printers.

#### OC Printer Loader

The OC Printer Loader is a tool that runs on your hand-held terminal, and allows you to configure printers while out in the field. OC Printer Loader runs on Windows Mobile 5.x and 6.x, and configures your printer from your hand-held terminal through Bluetooth and RS232 Serial connections.



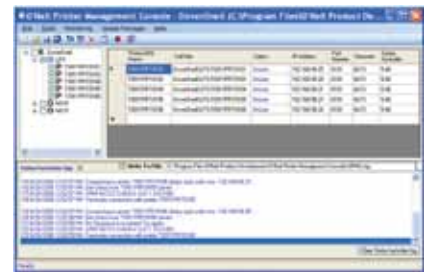
#### MFlash Configuration Program

MFlash Configuration Program is a configuration tool that allows you to change settings on your printer. It is ideal for field troubleshooting and quick configuration of a few printers.

M-Flash is compatible with Windows XP (SP2), Windows Server 2003, and Windows Vista, and can communicate through USB and RS232 Serial connections.

#### Datamax-O'Neil Remote Management Software (RMS)

Datamax-O'Neil's Remote Management Software allows you to configure and manage multiple Datamax-O'Neil portable printers within your enterprise network. It allows you to send updates, download new fonts and graphics, manage printers within groups and push diagnostic commands to help field troubleshooting.



RMS runs on Windows XP (SP2), Windows Server 2003, and Windows Vista, and manages printers on your TCP/IP network.

#### Software Development Kits

Datamax-O'Neil has also enabled easy customization of existing programs to get your solution up and running fast! We have SDKs for the following portable environments: BlackBerry, C++, C#/VB .Net, Java and Microsoft Dynamics. We also support the following Operating Systems: Window CE, XP, and Vista; Windows Mobile; Android IOS; and Blackberry OS.

### What is a PrintPAD?

The PrintPAD is a unique solution that was designed to simplify daily operations in the field. It combines the company's 4te (the industry's most reliable portable 4" thermal printer) with an integrated cradle that houses a mobile handheld computer. The sleek, compact design of the PrintPAD allows users to conveniently and securely carry their mobile computer, communicate with the printer, and charge both the computer and printer from a single source—all in one integrated package.

### What are the primary benefits of a PrintPAD?

- **Carry** - Using a single integrated product eliminates the hassle of juggling multiple devices and decreases the chance of dropping or misplacing a device in the field. The PrintPAD also provides another layer of protection for your handheld computer.
- **Charge** - Instead of charging each device separately, the PrintPAD allows you to charge both from a single AC or cigarette lighter adaptor. This is not only convenient for workers in the field but also reduces the cost associated with purchasing and maintaining multiple charging devices.
- **Communicate** – PrintPAD provides seamless communication between the handheld computer and printer. When the handheld is in the cradle, it communicates directly with the printer. An integral Bluetooth option gives mobile workers the ability to communicate with the printer wirelessly when the handheld device is not residing in the PrintPAD.

### Are PrintPADs only available from Datamax-O'Neil?

PrintPAD is a registered trademark of Datamax-O'Neil Product Development. Other manufacturers offer integrated solutions similar to the PrintPAD, however we introduced the first integrated solution 15 years ago and remain the undisputed leader in this market segment.

### In what applications are PrintPADs most useful?

PrintPADs are ideal for any delivery and field service application that has requirements for both mobile computing and printing. The PrintPAD is popular in food and beverage sales, field service, route accounting, direct store delivery, rugged mobile point-of-sale and law enforcement ticketing applications.

### Do PrintPADs maintain Datamax-O'Neil's reputation for reliability?

PrintPAD offers a proven design with over 15 years of product refinement and an uncompromising standard for reliability. The PrintPAD was engineered to thrive in even the most punishing environments. All PrintPADs are tested rigorously for ruggedness and reliability. In fact, Datamax-O'Neil offers the only PrintPAD-type device with a published 6-foot drop specification.

### Since PrintPADs are used primarily in field service operations, do they have enough battery life to meet my needs?

The PrintPAD is powered by two Lithium-ion batteries, and automatic and user-definable settings allow the user to extend the battery life. The PrintPAD holds enough battery power to print approximately up to 13,440 inches or 2,240 6-inch receipts on a single charge. The PrintPAD's printer and handheld computer can also be simultaneously recharged either through an AC adaptor or cigarette lighter adaptor.

### **What kind of warranty is included with the PrintPAD?**

All PrintPADs come with a two year standard warranty, the longest in the industry.

### **I need to be able to conduct point-of-sale and other related transactions in the field. Can a PrintPAD accommodate this requirement?**

The PrintPAD offers an optional magnetic stripe card reader, and when combined with a mobile computer, offers workers the ability to scan items, take credit card payments and issue a customer receipt anywhere on the premises.

### **What mobile computer models does the PrintPAD support?**

The PrintPAD is the most flexible integrated printing system on the market, and offers models compatible with Motorola (MC70 and MC75 Series), Honeywell (Dolphin 99EX), and Intermec (CN3, CN3e, CN4 and CN4e handheld computers.

### **I have unique requirements for my field service technicians. Can I customize my PrintPAD?**

A large number of options and accessories are available to meet the unique requirements of diverse applications including Bluetooth connectivity, a DEX port, power charging options, multiple mounting and carrying options, swipe-style magnetic card reader and a wide assortment of media.

### **What is the newest member of the PrintPAD family?**

We recently introduced PrintPADs that integrate Honeywell Dolphin™ 99EX mobile handheld computers.

### **Doesn't Intermec offer an integrated solution that incorporates the CN3, CN3e, CN4 and CN4e with a printer similar to PrintPAD?**

They do, but Datamax-O'Neil pioneered the PrintPAD concept over three generations ago and established itself as the undisputed leader in this type of solution. The PrintPAD also includes the following advantages:

- 35% lighter than the PW50
- Comes with a battery pack while the PW50 requires a separate battery purchase
- Larger battery and media capacity for longer, uninterrupted shifts
- 2-year warranty - that's double what Intermec offers and an important component when calculating the total cost



### Service Options

Datamax-O'Neil now offers the most cost-effective product warranty programs to ensure that your business-critical printing applications continue trouble free and without interruption – long after the original warranty period has ended. You also get the peace of mind in knowing that service and repair is coming from the manufacturer, who has the infrastructure to ensure you receive the very best service at the most competitive price. Our Extended Warranty Service Agreements have been designed with a consistent and simple structure, enabling you to select a program that best suits your needs. The following features are provided:

- Quick Response Times
- A Variety of Comprehensive Coverage Options
- A Broad Choice of Contract Duration Options
- Ease of Purchase and Registration
- Upgradability to Other Service Options

Obtaining an Extended Warranty is easy. At the time of purchase or at any time during the Standard Warranty period, an Extended Warranty can be purchased to add up to 4 years to your printer's coverage. Then, choose from one of 3 value-added options to accommodate your business needs:

- Priority – with a 2-day turnaround on warranty repairs (standard warranty is 5-day turnaround).
- Printer Express - a “hot swap” exchange through a managed pool of customer-owned inventory
- Comprehensive - “no fault” comprehensive coverage

You can rest assured that printers covered by Datamax-O'Neil service options will continue to deliver top quality results for the duration of the agreement.

### Warranty Service Procedures

A downloadable “Return Material Authorization (RMA)” form is available at [www.datamax-oneil.com](http://www.datamax-oneil.com). It is necessary to obtain and print your RMA number clearly on your package before shipping.

### Limited Warranty

Datamax-O'Neil warrants to Purchaser that under normal use and service, the PrintPAD Printer Series, purchased hereunder shall be free from defects in material and workmanship for a period of 2 years from the date received. Expendable and/or consumable items or parts such as lamps, fuses, labels and ribbons are not covered under this warranty. This warranty does not cover equipment or parts that have been misused, altered, neglected, handled carelessly, or used for purposes other than those for which they were manufactured. This warranty also does not cover loss, damages resulting from accident, or damages resulting from unauthorized service.

## Motorola MC70 and MC75 Compatible

| Part Number | RS-232 | Bluetooth | DEX | Magnetic Card Reader | E-Charge |
|-------------|--------|-----------|-----|----------------------|----------|
| 200410-100  | •      |           |     |                      |          |
| 200411-100  | •      |           |     | •                    |          |
| 200417-100  | •      |           | •   |                      |          |
| 200421-100  | •      |           |     |                      | •        |
| 200412-100  | •      |           | •   | •                    |          |
| 200426-100  | •      |           |     | •                    | •        |
| 200423-100  | •      |           | •   |                      | •        |
| 200425-100  | •      |           | •   | •                    | •        |
| 200413-100  | •      | •         |     |                      |          |
| 200415-100  | •      | •         |     | •                    |          |
| 200416-100  | •      | •         | •   | •                    |          |
| 200422-100  | •      | •         |     |                      | •        |
| 200424-100  | •      | •         | •   |                      | •        |

## Honeywell 99EX Compatible

| Part Number | RS-232 | Bluetooth | DEX | Magnetic Card Reader | E-Charge |
|-------------|--------|-----------|-----|----------------------|----------|
| 200511-100  | •      | •         |     |                      | •        |
| 200512-100  | •      | •         | •   | •                    | •        |

## Intermec CN3 and CN4 Compatible

| Part Number | RS-232 | Bluetooth | DEX | Magnetic Card Reader | E-Charge |
|-------------|--------|-----------|-----|----------------------|----------|
| 200440-101  | •      |           |     |                      |          |
| 200451-101  | •      |           |     |                      | •        |
| 200443-101  | •      | •         |     |                      |          |
| 200452-101  | •      | •         |     |                      | •        |
| 200455-101  | •      | •         |     | •                    | •        |

## Intermec CN3e and CN4e Compatible

| Part Number | RS-232 | Bluetooth | DEX | Magnetic Card Reader | E-Charge |
|-------------|--------|-----------|-----|----------------------|----------|
| 200460-101  | •      |           |     |                      |          |
| 200463-101  | •      | •         |     |                      |          |
| 200472-101  | •      | •         |     |                      | •        |
| 200466-101  | •      | •         | •   | •                    |          |

|             | Part Number | Item Description   |
|-------------|-------------|--|
| Chargers    | 220515-100  | AC Adapter for Charging with US plug                       |
|             | 220516-100  | AC Adapter for Charging with EU plug                       |
|             | 220517-100  | AC Adapter for Charging with UK plug                       |
|             | 200521-100  | AC Adapter for Charging with Swiss plug                    |
|             | 220518-100  | AC Adapter for Charging with AU plug                       |
|             | 220220-100  | Batter Charger, Double Bay <sup>2</sup>                    |
|             | 510116-001  | Cigarette Lighter Vehicle Power for Thermal Printers       |
| Comm. Cable | 210237-100  | Cable, DEX PrintPAD  |
|             | 210267-100  | Cable, Right Angle, USB                                    |
|             | 210191-101  | DB9F Cable, Right Angle, 7' [2m]                           |
| Accessories | 220205-200  | Kit, 3' (AMP) Right Angle Power Extension Cable            |
|             | 220206-200  | Kit, 6' (AMP) Right Angle Power Extension Cable            |
|             | 220207-200  | Kit, 10' (AMP) Right Angle Power Extension Cable           |
|             | 220210-200  | Kit, 10' Fuse Box Right Angle Power Cable                  |
|             | 220513-001  | Kit, Vehicle Mount Bracket                                 |
|             | 220262-101  | Kit, Charging Vehicle Mount Bracket                        |
|             | 220267-101  | Kit, 5-Up E-Charge Settlement Room Bracket                 |
|             | 550039-100  | Replacement Battery, 7.2V, 2200 mAh, Lithium Ion           |
|             | 280228-000  | 3" Spindle Bracket   |
|             | 220265-100  | Handle Strap Kit for 99EX and CN3, CN4, CN3e and CN4e Only |
|             | 210223-000  | Handle Strap Kit (non-adjustable) for MC70/75 Only         |
|             | 750139-000  | 75" Shoulder Strap   |

### PrintPAD Ordering Notes

- 1) All PrintPADs include two batteries, hand strap and paper roll.
- 2) Power supply must be ordered separately.
- 3) All PrintPads include a standard factory warranty period of two years.



right by our customers ■ ■ ■



around the world.

### North America

#### Corporate Headquarters - Florida

4501 Parkway Commerce Blvd.  
Orlando, FL 32808  
Tel: 800-816-9649  
Fax: 407-578-8377

#### California

8 Mason  
Irvine, CA 92618  
Tel: 949-458-0500  
Fax: 949-458-0708

#### Datamax-O'Neil Printer Supplies

7656 E. 700th Avenue  
Robinson, IL 62454  
Tel : 618-546-5418  
Fax : 618-546-1518

### Asia Pacific

#### Singapore

9 Toh Guan Road East  
#04-01 Alliance Building  
Singapore 608604  
Tel: +65-6505-2250  
Fax: +65-6769-8135

#### China

Room 1016, FL 10 Tianjian Bldg.  
6th Huixinnanli  
Chaoyang District, Beijing 100011  
Tel: +86-10-6496-9313  
Fax: +86-10-6494-8937

298, Wu Tang Road, Feng Xian  
District, Shanghai 201401  
Tel: +86-21-6163-5862  
Fax: +86-21-5743-2002

#### Thailand

2nd Floor, RN Building  
961 Rama 3 Rd  
Bangpongpan, Yannawa  
Bangkok 10120  
Tel: +66-2-689-7333  
Fax: +66-2-686-3433

#### Australia

Suite 201, T1 Building  
Norwest Business Park  
14-16 Lexington Drive  
Sydney NSW 2153  
Tel: +61-2-9421-5602  
Fax: +61-2-9421-5699

### Europe, Middle East, and Africa

#### France

9 Rue Gaspard Monge  
26500 Bourg-lès-Valence  
Tel: +33 (0) 4 75 75 63 00  
Fax: +33 (0) 4 75 82 98 39

#### UK

Alexander Fleming Building  
University Boulevard  
Nottingham Science Park  
Nottingham NG7 2RF  
Tel: +44 (0) 790 968 1728  
Fax: +33 (0) 4 75 82 98 39

#### Germany

Schockenriedstrasse 8c  
70565 Stuttgart  
Tel: +49 (0) 6103-8316870  
Fax: +33 (0) 4 75 82 98 39

#### Austria

Zweigniederlassung Österreich  
Lemböckgasse 47b  
1230 Wien  
Tel: DE: + 49 (0) 173 340 7745  
Tel: SLO: +386 (0) 31 626 800  
Fax: +33 (0) 4 75 82 98 39

### Latin America

#### Mexico

Av. Central No. 186-B  
Col. Nueva Industrial Vallejo  
C.P 07700, Mexico DF  
Tel: +52-55-1168-6146  
Fax: +52-55-1168-6102

#### Argentina

Av. Franklin D. Roosevelt 4989  
Suite 303  
Buenos Aires (C1431BZC)  
Tel: +54-11-5555-6519  
Fax: +54-11-4521-8022