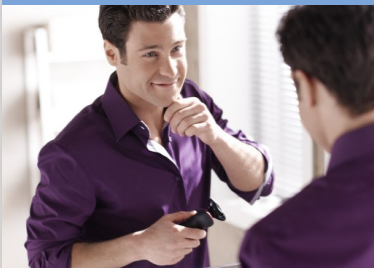


PHILIPS

Shaver series 7000
SensioTouch

wet & dry electric
shaver

DualPrecision & GyroFlex2D
50 min cordless use/1h charge
Precision Trimmer and Pouch



RQ1155/16



Soft touch, smooth skin

The Philips SHAVER series 7000 gives a soft touch for a smooth shave. The GyroFlex 2D system adjusts easily to the curves of your face and shaves even the shortest stubble with its DualPrecision blades.

A close, comfortable shave

- Cutting slots & holes catch even the shortest hairs
- 2-way flexing heads adjust easily to the curve
- Super Lift and Cut blades raise hairs to cut closer

Skin friendly

- Aquatec seal for a comfortable dry & a refreshing wet shave
- Smooth, low-friction SkinGlide to minimise irritation

Easy to use

- Simply rinses clean
- Perfect moustache and sideburn trimming
- 2 level battery indicator with travel lock
- 50 shaving minutes, 1 hour charge
- Charging stand keeps your shaver fully charged and ready
- 2-year guarantee, worldwide voltage and replaceable blades



asimpleswitch.com

Highlights

Dual Precision blades



DualPrecision blades comfortably shave both long hairs and short stubble. 1. Slots cut long hairs. 2. Holes cut stubble

Super Lift and Cut



The dual blade system built into the Philips electric shaver lifts hairs to cut comfortably below skin level for a closer shave.

GyroFlex 2D



GyroFlex 2D contour-following system of the shaver adjusts easily to the curves of your face, minimizing pressure and irritation for a close shave.

Aquatec Wet and Dry



The Aquatec wet & dry seal of the electric shaver lets you choose how you prefer to shave. You can get a comfortable dry shave or a refreshing wet shave using a shaving gel or foam for extra skin comfort.

SkinGlide



The low-friction SkinGlide shaving surface of the electric shaver slides smoothly along your skin for a close easy shave.

Click-on trimmer



Perfect your look with the SmartClick skin-friendly precision trimmer. It's ideal for maintaining a moustache and trimming sideburns.

Specifications

Shaving Performance

Contour-following: GyroFlex 2D contour following

Shaving system: DualPrecision System, Super Lift & Cut technology

Skin comfort: SkinGlide

Styling: Skin friendly precision trimmer

Ease of use

Charging: 1 hour, Rechargeable, Quick charge 3 min for 1 shave

Shaving time: 50 minutes

Display: 2 level battery indicator, Battery low indicator, Charge indicator, Travel lock, Quick charge indication

Cleaning: Washable

Design

Finishing: Brushed chrome deco ring

Accessories

Maintenance: Cleaning brush, Protective cap

Stand: Foldable charging stand

Pouch: Soft pouch

Power

Battery Type: Lithium-ion

Automatic voltage: 100-240 V

Service

2-year guarantee

Replacement head: Replace every 2 yrs with RQ11



asimpleswitch.com

Philips Green Logo

Philips Green Products can reduce costs, energy consumption and CO2 emissions. How? They offer a significant environmental improvement in one or more of the Philips Green Focal Areas – Energy efficiency, Packaging, Hazardous substances, Weight, Recycling and disposal and Lifetime reliability.