

LANCOM PRODUCT OVERVIEW



Headquarters

LANCOM Systems GmbH
Adenauerstr. 20/B2
52146 Wuerselen
Germany

Telephone

+49 (0)2405 49936-0

Fax

+49 (0)2405 49936-99

E-mail

info@lancom.de

Internet

www.lancom-systems.com

LANCOM, LANCOM Systems, LCOS, LANcommunity and Hyper Integration are registered trademarks. All other names or descriptions used may be trademarks or registered trademarks of their owners. This document contains statements relating to future products and their attributes. LANCOM Systems reserves the right to change these without notice. No liability for technical errors and/or omissions. 07/21

SECURE. NETWORKS.

- > Cloud-managed Networks
- > Routers & VPN Gateways
- > All-IP & VoIP Routers
- > Next-generation UTM Firewalls
- > Switches
- > Wireless LAN
- > Service, Training & Support



Secure. Networks. Trusted networking solutions

LANCOM Systems is the leading European manufacturer of secure, reliable, and future-viable networking and security solutions (WAN, LAN, WLAN, and firewalls) for business and the public sector. The company combines hardware with virtual networking components and cloud-based software-defined networking (SDN). The result is a unique portfolio of on-premises and cloud solutions with a central platform for SD-WAN, Cloud-managed networks & security, and SD-Branch.

Software and hardware development as well as manufacturing take place mainly in Germany, as does the hosting of the network management. Special attention is given to providing trusted solutions with excellent security features. Furthermore, freedom from backdoors is a key protection provided by these products. The Trust Seal "IT-Security Made in Germany" confirms the trustworthiness and the outstanding security levels the products offer.

LANCOM Systems was founded in 2002 and has its headquarters in Würselen near Aachen, Germany. Customers include SMEs, government agencies, institutions, and major corporations from all over the world. Since summer 2018, the company has been an independent subsidiary of the Munich-based technology group Rohde & Schwarz GmbH & Co. KG.

CLoud-MANAGED NETWORKS

LANCOM Management Cloud	4
SD-WAN	6

ROUTERS AND VPN GATEWAYS

Business VPN Routers	8
Business VoIP Routers	12
Internet Access Routers	14
Software VPN Clients	16
Central site VPN Gateways	18

SECURITY

Next-generation UTM Firewalls	20
-------------------------------	----

SWITCHES

Fully Managed Aggregation Switches	24
Fully Managed Enterprise Access Switches	26
Fully Managed SMB Access Switches	27
Unmanaged Switches	29

WIRELESS LAN

WLAN Indoor Access Points	30
WLAN Controllers	33
Wireless ePaper Solutions	34
Outdoor Access Points	36
Industrial Access Points	38
Versatile WLAN Guest Access	39

ACCESSORIES AND OPTIONS

Hardware Accessories	15
Software Options	17

SERVICE, TRAINING & SUPPORT

Service & Support	40
Training Center	42

COMPARISON TABLE

44

Cloud-managed Networks

The LANCOM Management Cloud is the world's first hyper-integrated management system that intelligently organizes, optimizes, and controls your entire network architecture in terms of routing, switching, wireless LAN, and security. This state-of-the-art cloud management system for all network components drastically simplifies the provision of integrated networks, so that the manual configuration of individual devices is now a thing of the past.

HIGHLIGHTS OF THE LANCOM MANAGEMENT CLOUD

- › Control and monitoring of the entire network by one system
- › Zero-touch deployment and auto-configuration
- › Holistic and automatic network virtualization
- › Scalability for networks of any scale
- › Highly automated system for maximum time- and cost savings
- › Easy device integration thanks to a term-based licensing model



Learn more at: www.lancom-systems.com/cloud

Hyper Integration



AUTOMATED, HOLISTIC NETWORK ORCHESTRATION

The LANCOM Management Cloud replaces manual and individual device configurations by automated network orchestration. All the administrator has to do is to specify the framework conditions for the design of the network. Complex network configurations are reduced to a few minutes and clicks!



Maximum agility and versatility



State-of-the-art security



Radical time and cost savings



Highly automated multi-service networks



Products on pages marked with this symbol can be integrated into the LANCOM Management Cloud.

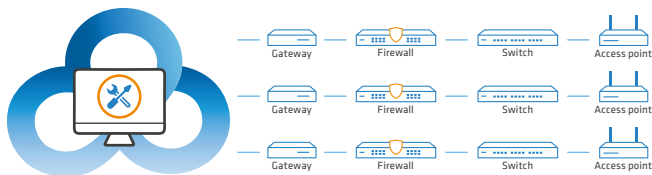
SD-WAN

Made in Germany

Are you looking for fast, reliable, and flexible access to the Internet, applications and data – anytime, anywhere? Make no compromises! Move up to one of the most agile and secure network solutions on the market. LANCOM SD-WAN – so you can concentrate fully on your business.

SIMPLIFY DIGITAL TRANSFORMATION

A software-defined wide area network (SD-WAN) replaces traditional, static, manually configured network infrastructures. It uses simple Internet-based wide-area networks (WAN) for rapid deployment of digital applications at all company locations. On-site visits by qualified technicians are no longer necessary.



WHY LANCOM SD-WAN?

- > Maximum cost savings by replacing or supplementing expensive MPLS lines
- > Maximum automation through zero-touch WAN provisioning
- > Maximum agility through fast provision and secure separation of digital applications
- > Best scalability and availability thanks to next-generation technologies such as High Scalability VPN, Dynamic Path Selection, and Load Balancing
- > Made & hosted in Germany, if required also as a private cloud



SD-BRANCH

A LANCOM SD-WAN is the basis for SD-Branch and thus the basis for a holistic networking of distributed company locations.

Discover how the LANCOM SD-Branch solution creates the highly integrated orchestration of every part of the network (routers – WAN, switches – LAN, access points – WLAN, firewalls – security) within branch infrastructures. All devices are orchestrated collectively and automatically – for more than **70% time savings** in your daily business.



SECURE. NETWORKS.

You can rely on IT security Made in Germany from LANCOM and benefit from device handling that is guaranteed to be backdoor-free and fully compliant with data protection regulation.

Learn more at: www.lancom-systems.com/sd-branch

Business VPN Routers SD-WAN with the 1900 series



Large-scale network infrastructures operating at multiple locations demand true bandwidth experts to keep everything working efficiently in the changing digital environment. The LANCOM business VPN routers of the 1900 series are professional devices for secure VPN networking and high-performance Internet connectivity.

THE BANDWIDTH EXPERTS

- ideal for medium-sized and large enterprise infrastructures

NEW



LANCOM 1926VAG

- > 2x VDSL Supervectoring (operable in parallel), alternative use of a modem at a G.fast connection, 1x SFP / TP, 1x WAN Ethernet
- > Load balancing & a higher available bandwidth
- > Integrated LANCOM VCM (Voice Call Manager) and SBC (Session Border Controller)
- > 2 ISDN interfaces (NT) and 4 analog interfaces
- > 25 simultaneous IPSec VPN connections (opt. 50 / 100)



LANCOM 1926VAG-4G

- > Like the **LANCOM 1926VAG**, with dual-SIM LTE Advanced for up to 300 Mbps



LANCOM 1900EF

- > Multi-WAN VPN gateway with 1x SFP / TP, 1x WAN Ethernet
- > Load balancing & a higher available bandwidth
- > Integrated LANCOM VCM (Voice Call Manager) and SBC (Session Border Controller)
- > 25 simultaneous IPSec VPN connections (opt. 50 / 100)
- > "Accelerated Security Certification" (BSZ): Confirmation of the highest security and data-protection standards for the first SD-WAN gateway certified by the German Federal Office for Information Security (BSI)



HIGH-PERFORMANCE 5G

- > Highest availability and best bandwidths for using real-time applications such as video streaming or augmented reality (AR)
- > Unmatched speed, lowest latency
- > Ideal for environments with high densities of users
- > Backwards compatible with the 4G LTE

THE POWERFUL 5G VPN ROUTERS OF THE 1900 SERIES

- ideal for medium-sized and large enterprise infrastructures

PREVIEW



LANCOM 1926VAG-5G

- > Like the **LANCOM 1926VAG**, with integrated 5G modem
- > Primary operation via 5G or in active / active operation in parallel with other access types

PREVIEW



LANCOM 1900EF-5G

- > Like the **LANCOM 1900EF**, with integrated 5G modem
- > Primary operation via 5G or in active / active operation in parallel with other access types

5G antennas available from: www.lancom-systems.com/products/accessories

Business VPN Routers



For small and medium-sized companies, the reliable connection of branch offices, employees or service providers is absolutely essential. LANCOM routers are professional devices featuring a wide variety of interfaces and versatile backup options.

VPN ROUTERS FOR DIVERSE REQUIREMENTS

- ideal for small and medium-sized infrastructures

PREVIEW



LANCOM 1800EF / 1800EFW / 1800EF-5G

- > Gigabit-speed Internet via external modems or fiber optics
- > 5 simultaneous IPSec VPN connections (opt. 25)
- > Incl. USB port for integrating modern IoT wireless systems
- > **LANCOM 1800EFW** additionally with Wi-Fi for parallel operation at 2.4 and 5 GHz at up to 1,775 Mbps with Wi-Fi 6
- > **LANCOM 1800EF-5G** additionally with integrated 5G modem

LANCOM 1790VA-4G+

- > Integrated VDSL Supervectoring modem for up to 300 Mbps (backwards compatible with VDSL2 / ADSL2+)
- > LTE Advanced for up to 300 Mbps
- > 5 simultaneous IPSec VPN connections (opt. 25)
- > Incl. USB port for integrating modern IoT wireless systems

LANCOM 1790VAW

- > Like the **LANCOM 1790VA-4G+**, without LTE Advanced
- > Wi-Fi operation at 2.4 or 5 GHz at up to 867 Mbps with Wi-Fi 5 or 300 Mbps with Wi-Fi 4

LANCOM 1790VA

- > Like the **LANCOM 1790VA-4G+**, without LTE Advanced



LANCOM 1790-4G

- > Like the **LANCOM 1790VA-4G+**, without VDSL and USB port

LANCOM 1790EF

- > High-speed Internet via external modems or fiber-optics
- > 5 simultaneous IPSec VPN connections (opt. 25)

LANCOM 1781EW+

- > Gigabit Ethernet for connection to DSL or cable modems
- > Wi-Fi at up to 450 Mbps with Wi-Fi 4
- > 1x ISDN interface
- > 5 simultaneous IPSec VPN connections (opt. 25)

LANCOM 1780EW-4G+

- > Gigabit Ethernet for connection to DSL or cable modems
- > LTE Advanced for up to 300 Mbps
- > Wi-Fi operation at 2.4 or 5 GHz at up to 867 Mbps with Wi-Fi 5 or 300 Mbps with Wi-Fi 4
- > 5 simultaneous IPSec VPN connections (opt. 25)

LANCOM IAP-4G+

- > LTE Advanced for up to 300 Mbps
- > All-metal housing as per IP50
- > Extended temperature range (-20°C to +50°C)
- > 5 simultaneous IPSec VPN connections (opt. 25)

LANCOM 1640E

- > Gigabit Ethernet for connection to external DSL or cable modems
- > 3 simultaneous IPSec VPN connections

LANCOM VIRTUAL CPE

- > Software-based router for operation in virtual environments
- > Licenses for LANCOM vRouter 50 and vRouter 250

vCPE

For more information about our products and availability please visit:
www.lancom-systems.com/products/routers-vpn-gateways

Business VoIP Routers



As a migration solution for operating analog, ISDN, and VoIP terminals at an All-IP exchange line or for fast Internet by means of Supervectoring – the LANCOM business VoIP router networking experts are ideal for the diverse demands of modern small and medium-sized companies.

FIT FOR ALL-IP

– in small and medium-sized networks



LANCOM 1793VA-4G

- > Integrated VDSL Supervectoring modem for up to 300 Mbps (backwards compatible with VDSL2 / ADSL2+)
- > LTE Advanced for up to 300 Mbps
- > Integrated LANCOM VCM (Voice Call Manager) and SBC (Session Border Controller)
- > 2 ISDN interfaces (1x TE / NT, 1x NT) and 4 analog interfaces
- > 5 simultaneous IPsec VPN connections (opt. 25)
- > Network virtualization with up to 16 networks (ARF)



LANCOM 1793VAW

- > Like the **LANCOM 1793VA-4G**, without LTE Advanced
- > Wi-Fi operation at 2.4 or 5 GHz at up to 867 Mbps with Wi-Fi 5 or 300 Mbps with Wi-Fi 4



LANCOM 1793VA

- > Like the **LANCOM 1793VA-4G**, without LTE Advanced



LANCOM DECT 510 IP

- > Integration into networks via LANCOM business VoIP routers / routers with an activated All-IP Option
- > Supports up to 6 DECT handsets



LANCOM 1784VA

- > Integrated VDSL2 / ADSL2+ modem
- > Integrated LANCOM VCM (Voice Call Manager) and SBC (Session Border Controller)
- > 4 ISDN interfaces (2x TE / NT, 2x NT)
- > 5 simultaneous IPsec VPN connections (opt. 25)
- > Network virtualization with up to 16 networks (ARF)



LANCOM 883+ VoIP

- > Integrated VDSL Supervectoring modem for up to 300 Mbps (backwards compatible with VDSL2 / ADSL2+)
- > Wi-Fi at up to 300 Mbps with Wi-Fi 4
- > Integrated LANCOM VCM (Voice Call Manager) and SBC (Session Border Controller)
- > 2 ISDN interfaces (1x TE / NT, 1x NT) and 4 analog interfaces
- > 3 simultaneous IPsec VPN connections (opt. 5 / 25 with LANCOM Enterprise Option)
- > Network virtualization with up to 2 networks (ARF)



LANCOM 883 VoIP

- > Like the **LANCOM 883+ VoIP**, with integrated VDSL2 / ADSL2+ modem and 2 analog interfaces



LANCOM 884 VoIP

- > Integrated VDSL2 / ADSL2+ modem
- > Integrated LANCOM VCM (Voice Call Manager) and SBC (Session Border Controller)
- > 4 ISDN interfaces (2x TE / NT, 2x NT)
- > 3 simultaneous IPsec VPN connections (opt. 5 / 25 with LANCOM Enterprise Option)
- > Network virtualization with up to 2 networks (ARF)



LANCOM IAP-1781VAW+

- > Integrated VDSL2 / ADSL2+ modem for up to 100 Mbps
- > Wi-Fi operation at 2.4 or 5 GHz at up to 867 Mbps with Wi-Fi 5 or 300 Mbps with Wi-Fi 4
- > Robust IP54 protective housing (temperature range -25°C to +70°C) including mounting materials
- > 5 simultaneous IPsec VPN connections (opt. 25)

For more information about our products and availability please visit:
www.lancom-systems.com/products/routers-vpn-gateways

Internet Access Routers



Internet access routers from LANCOM can be used in small and large networks, and they are ideal where high-end modems are required or where cellular models operate as additional “4G antennas” for other routers.

BUSINESS SOLUTIONS

- reliable and versatile



LANCOM 730VA

- > Integrated VDSL2 / ADSL2+ modem
- > Operation as pure DSL modem or router possible



LANCOM 730-4G+

- > Operates as a freely positionable LTE Advanced network extension or as a stand-alone LTE router
- > Easily connected to a LANCOM router or switch
- > Powered by PoE or power supply unit
- > LTE Advanced for up to 300 Mbps



Hardware Accessories

LANCOM offers a comprehensive range of accessories for many applications. With convenient rack- or wall-mounting options and SFP modules for fast fiber-optic connections, you can adapt your LANCOM product to your specific needs.



LANCOM SFP MODULES

- > Versatile use in LANCOM switches, routers, and firewalls with integrated SFP ports
- > For high-speed fiber-optic networking or as a copper-cabled Ethernet port
- > Also available in bulk or as Direct Attached Cable

* Suitable SFP modules can be found in the appendix as well as further information at:

www.lancom-systems.com/products/accessories/sfp-modules

LANCOM FIREWALL EXTENSION MODULES

- > Versatile port expansion for LANCOM R&S® Unified Firewalls
- > For high-speed fiber-optic networking or as a copper-cabled Ethernet port



LANCOM RACK MOUNT (19")

- > Sturdy mounting bracket for LANCOM devices in 19" cabinets
- > Suitable for front or rear device mountings



LANCOM RACK MOUNT PLUS (19")

- > Sturdy mounting bracket for LANCOM devices in 19" cabinets
- > Device connectors located on the front



LANCOM WALL MOUNT

- > Convenient wall mounting for LANCOM indoor access points and routers with indoor housings
- > Safe from theft thanks to padlock
- > Also available as Wall Mount (Rail) and Wall Mount (LN) for access points of the LN / LX series



Software VPN Clients

At their home office or on the road, employees can dial-in to the corporate network at any time at the click of a mouse: The LANCOM Advanced VPN Client enables secure and convenient data communication over the Internet. The software is available for the operating systems Microsoft Windows* and macOS**.

LANCOM ADVANCED VPN CLIENT

– secure access when traveling

WINDOWS

- › IPsec VPN client for Windows 10, Windows 8.1, Windows 8 and Windows 7 (32 and 64 bit)
- › Supports IPv4 and IPv6 VPN
- › IKEv2 support
- › IPsec-over-HTTPS (based on NCP VPN Path Finder technology)
- › Seamless roaming – VPN connections remain intact even with media changes

macOS

- › IPsec VPN client for macOS
- › Integrated stateful inspection firewall
- › Supports IPv4 and IPv6 VPN
- › IKEv2 support



* Microsoft and Windows are either registered trademarks or trademarks of Microsoft Corporation in the U.S. and / or other countries.

** Mac and macOS are trademarks of Apple Inc. registered in the U.S. and other countries.

Software Options

The LANCOM software options upgrade your LANCOM routers, central site VPN gateways, access points, and WLAN controllers with an array of functions. These cost-efficient software upgrades give your existing devices entirely new functionalities – exactly according to your needs.



LANCOM CONTENT FILTER

- › Category-based review and blocking of web pages



LANCOM WLC BASIC OPTION

- › Upgrades LANCOM routers with WLAN controller functions
- › Manages 6 (optionally up to 12) access points or WLAN routers



LANCOM WLC UPGRADE OPTION

- › Increases the number of access points and WLAN routers managed by the WLAN controller



LANCOM HIGH AVAILABILITY CLUSTERING OPTION

- › For the centralized management of clustered WLAN controllers or central site VPN gateways and convenient configuration synchronization (Config Sync)



LANCOM VPN OPTION

- › Upgrades the number of available VPN tunnels



LANCOM ENTERPRISE OPTION

- › Upgrade for LANCOM 88x VoIP routers for more VPN channels, ARF networks, and further functionalities



LANCOM ALL-IP OPTION

- › Upgrades a LANCOM router to be an IP-ISDN gateway
- › Telephony functionalities with the LANCOM Voice Call Manager (VCM) and Session Border Controller (SBC)



LANCOM VoIP +10 OPTION

- › Upgrade for 10 additional VoIP phone numbers (max. 40) and 10 additional SIP lines (max. 55)

Learn more at: www.lancom-systems.com/products/software-options

Central site VPN Gateways



Companies use encrypted Internet connections to operate business-critical applications across multiple locations. LANCOM central site VPN gateways support the implementation of large-scale multi-service IP network structures for centralized security, high performance, and the utmost reliability.

CENTRALIZED SECURITY

– for large networks

LANCOM ISG-8000

- > 250 simultaneous IPsec VPN connections (optionally up to 3,000)
- > Network virtualization with up to 256 networks (ARF)
- > 2x 10 GE SFP+ ports, 8x GE-ETH ports, 2x front USB ports, 1x serial port (RJ45)



LANCOM ISG-4000

- > 200 simultaneous IPsec VPN connections (optionally up to 1,000)
- > Network virtualization with up to 256 networks (ARF)
- > 2x 10 GE SFP+ ports, 4x GE combo ports (ETH / SFP), 1x GE-ETH port, 1x front USB port, 1x serial port (RJ45)



LANCOM ISG-1000

- > 100 simultaneous IPsec VPN connections (optionally up to 200)
- > Network virtualization with up to 128 networks (ARF)
- > 4x GE combo ports (ETH / SFP) and 1x GE-ETH port, 1x front USB port, 1x serial port (RJ45)



vROUTER

The **LANCOM vRouter** is a virtual, software-based router for operation with VMware ESXi, HyperV, Microsoft Azure, or KVM (Kernel-based Virtual Machine). The term-based variants provide maximum flexibility with regard to network size and performance requirements.

Be it a branch router (vCPE), a central site VPN gateway (vGateway), or virtualized WLAN controller (vWLC) – the **LANCOM vRouter** is the ideal basis for state-of-the-art networks.

VIRTUALIZED PERFORMANCE

– for best scalability

VIRTUAL GATEWAYS

- > **LANCOM vRouter unlimited** – unlim. Mbps, opt. 1,000 or 3,000 VPN channels, 256x ARF, unlimited Public Spot users, WLAN controller function for up to 1,000 access points / WLAN routers
- > **LANCOM vRouter 1000** – 1,000 Mbps, 200 VPN channels, 128x ARF, unlimited Public Spot users, WLAN controller function for up to 200 access points / WLAN routers
- > **LANCOM vRouter 500** – 500 Mbps, 100 VPN channels, 64x ARF, unlimited Public Spot users, WLAN controller function for up to 100 access points / WLAN routers

VIRTUAL CPE

- > **LANCOM vRouter 250** – 250 Mbps, 50 VPN channels, 16x ARF, 128 Public Spot users, WLAN controller function for up to 50 access points / WLAN routers
- > **LANCOM vRouter 50** – 50 Mbps, 10 VPN channels, 8x ARF, 128 Public Spot users, WLAN controller function for up to 10 access points / WLAN routers

Next-generation UTM Firewalls



LANCOM R&S® Unified Firewalls complement the secure and guaranteed backdoor-free LANCOM networks with state-of-the-art security technology and Unified Threat Management (UTM) to create future-proof and comprehensive cybersecurity solutions – for secure networks from a single source.

DESKTOP UNIFIED FIREWALLS

– ideal for protecting small and medium-sized networks



LANCOM UF-60 / UF-160 / UF-260

- > Ideal for individual locations with low to medium data volumes
- > State-of-the-art security technologies and Unified Threat Management
- > Full VPN functionality
- > Also available as a virtual, software-based **vFirewall** for operation with VMware ESXi, Oracle VirtualBox, or Microsoft Hyper-V

vFIREWALL

CENTRAL SITE UNIFIED FIREWALLS

– ideal for protecting large networks

LANCOM UF-360 / UF-500 / UF-910

- > Ideal for larger networks with high data volumes
- > State-of-the-art security technologies and Unified Threat Management
- > Full VPN functionality
- > Also available as a virtual, software-based **vFirewall** for operation with VMware ESXi, Oracle VirtualBox, or Microsoft Hyper-V

vFIREWALL



LANCOM R&S® Unified Firewalls	UF-60	UF-160	UF-260	NEW UF-360	UF-500	UF-910
Hardware properties						
Ports	4x GE copper	4x GE copper	4x GE copper, 1x SFP	6x GE copper, 2x SFP+	6x GE copper	8x GE copper
Optional expansion modules	–	–	–	yes (1G ETH, 1G SFP, 10G SFP+)	yes (1G ETH, 1G SFP, 10G SFP+)	yes (1G ETH, 1G SFP, 10G SFP+)
Power supply & memory redundancy	–	–	–	–	–	yes
Max. system performance (individual measurements) *						
IPS / IDS throughput HTTPS (Mbps)	700	750	1,250	1,400	1,450	5,900
Firewall throughput TCP (Mbps)	3,500	3,550	4,450	11,600	13,000	59,000
VPN throughput IPSec (Mbps)	790	1,200	1,500	2,200	1,300	5,300
Concurrent sessions	1,000,000	1,000,000	2,000,000	4,000,000	2,000,000	16,700,000
Max. system performance (usage of all UTM functionalities) *						
UTM throughput HTTPS (Mbps)	150	170	340	420	430	1,700
Recommended number of VPN tunnels	5 - 25	25 - 50	100 - 200	200 - 1,000	200 - 1,000	250 - 2,000
LMC category	B	B	B	C	D	D

* All throughput rates measured bidirectionally with 1,500 bytes packet size.

CLOUD-MANAGED FIREWALLS

The LANCOM R&S® Unified Firewalls can be integrated into the LANCOM Management Cloud. Benefits include the transfer of your security to central network orchestration, easy roll-outs of VPN and security configurations, and clearly structured monitoring including alert functions. This makes LANCOM R&S® Unified Firewalls particularly suitable as end points and central devices in site-connectivity scenarios, e.g. in branch structures.

Suitable expansion modules and SFP modules can be found in this brochure as well as further information at:
www.lancom-systems.com/products/security/unified-firewalls/accessories

Security by Design

LANCOM offers you fully customizable Unified Firewalls for every requirement and any scale. The made-to-measure solution that meets your needs is rounded off with flexible license models and optional services.

MAXIMUM PROTECTION FROM CYBER ATTACKS



Threats from the Internet are on the increase. Networks have to withstand ever more complex attacks. Our next-generation firewalls offer protection from:

- > **Viruses, malware, spam**
- > **Phishing, trojans, worms**



Conventional security features are complemented by state-of-the-art cybersecurity technologies:

- > **Filtering and validation of applications and protocols**
- > **Preventive security against zero-day threats through integrated sandboxing and machine learning**
- > **State-of-the-art security technologies with R&S®PACE2 and deep packet inspection**



Innovative tools make LANCOM R&S®Unified Firewalls supremely user-friendly during their configuration, management, and monitoring by means of the:

- > **Innovative administration interface**
- > **Helpful wizards for simplified configuration**

Further service products, hardware accessories, warranty extensions, and training courses for LANCOM R&S®Unified Firewalls are outlined in this brochure or at: www.lancom-systems.com/unified-firewalls



UNIQUE USER INTERFACE

The easy-to-use web interface of the LANCOM R&S®Unified Firewalls helps to deliver the highest levels of cybersecurity. All firewall rules on the network are clearly and intuitively displayed in graphic form, so avoiding incorrect configurations.

FLEXIBLE LICENSE MODEL

Operating a LANCOM R&S®Unified Firewall requires a valid license, which you can add as required.



- > **LANCOM UF Basic License** activates the firewall functions and offers free support and firmware updates



- > **LANCOM UF Full License** supplements the LANCOM UF Basic License with complete UTM functions

Fully Managed Aggregation Switches



LANCOM aggregation switches are used to establish hierarchical switch infrastructures by networking lower-layer access switches. Equipped with fiber-optic and multi-Gigabit Ethernet ports along with high-throughput uplink and stacking ports, they serve as the distribution basis for fail-safe networks.

HIGH-PERFORMANCE SWITCHES

– for distributed networks

LANCOM XS-6128QF

- > 28-port stackable 10G fiber aggregation switch for medium-sized and large distributed networks
- > Up to 1,000 Gbps switch capacity
- > 20x 10G downlink ports including 16x SFP+ (1G / 10G) and 4x multi-Gigabit combo downlink ports (SFP+ / 1G / 2.5G / 5G / 10G nBASE-T), plus 4 additional SFP+ ports when operating SFP+ modules in the 4x SFP28 ports
- > 4x SFP28 (10G / 25G) or 2x QSFP+ (40G) Flex uplink ports
- > LANCOM fail-safe stacking via 4x dedicated SFP-DD Flex ports (25G / 50G)
- > Highest availability due to redundant, hot-swappable PSU and 2 hot-swappable fans

NEW



LANCOM XS-5116QF

- > 16-port stackable 10G fiber aggregation switch for medium-sized distributed networks
- > Up to 440 Gbps switch capacity
- > 12x SFP+ (1G / 10G) and 2x multi-Gigabit combo downlink ports (SFP+ / 1G / 2.5G / 5G / 10G)
- > 2x QSFP+ uplink or stacking ports (40G)
- > LANCOM fail-safe stacking via QSFP+ uplink ports
- > Highest availability due to redundant, hot-swappable PSU

NEW



LANCOM XS-5110F

- > 10-port stackable 10G fiber aggregation switch for smaller distributed networks
- > Up to 200 Gbps switch capacity
- > 8x SFP+ (1G / 10G) and 2x multi-Gigabit Ethernet ports (1G / 2.5G / 5G / 10G)
- > LANCOM fail-safe stacking via downlink ports

NEW



NEW



LANCOM SPSU-250

- > Hot-swappable power supply (250 W) for the LANCOM XS-6128QF or the LANCOM XS-5116QF
- > Ideal as a 2nd PSU for power supply redundancy

NEW



LANCOM SFAN-XS6

- > Hot-swappable fan module for the LANCOM XS-6128QF
- > Ideal for uninterrupted cooling

FULL LAYER-3 FUNCTIONALITY

All aggregation switches can take on layer-3 tasks, such as DHCP server functions or predefined network routes and, thanks to dynamic routing, they react quickly to changes on the network, take load off the router, and increase the efficiency of the network.

Fully Managed Enterprise Access Switches



These stackable switches are for large-scale, efficient, and reliable LAN infrastructures, network upgrades, redundancy scenarios, and single-IP management.

STACKABLE SWITCHES

– for fail-safe networks

LANCOM GS-4554X / GS-4554XP

- > 54-port stackable multi-Gigabit access switch for enterprise networks
- > 12x 2.5-Gigabit Ethernet ports, 36x 1-Gigabit Ethernet ports, 4x SFP+ (1G / 10G) and 2x QSFP+ uplink or stacking ports (10G / 40G)
- > Layer-3 features (dynamic routing via OSPF, DHCP server)
- > Highest availability due to redundant, hot-swappable PSU
- > LANCOM fail-safe stacking via QSFP+ uplink ports
- > **LANCOM GS-4554XP** additionally supports PoE as per IEEE 802.3af/at (820 W, with 2nd PSU 1,440 W) and front-to-back ventilation

PREVIEW



LANCOM GS-4530X / GS-4530XP

- > 30-port stackable multi-Gigabit access switch for enterprise networks
- > 12x 2.5-Gigabit Ethernet ports, 12x 1-Gigabit Ethernet ports, 4x SFP+ (1G / 10G) and 2x QSFP+ uplink or stacking ports (10G / 40G)
- > Layer-3 features (dynamic routing via OSPF, DHCP server)
- > Highest availability due to redundant, hot-swappable PSU
- > LANCOM fail-safe stacking via QSFP+ uplink ports
- > **LANCOM GS-4530XP** additionally supports PoE as per IEEE 802.3af/at (820 W, with 2nd PSU 1,440 W) and front-to-back ventilation

PREVIEW



For more information about our products and availability please visit:
www.lancom-systems.com/products/network-switches

Fully Managed SMB Access Switches



These switches are the ideal solution for advanced network infrastructures. The efficient distribution of tasks between the network components makes for intelligent networking scenarios.

HIGH-PERFORMANCE SWITCHES

– for data-intensive networks

LANCOM GS-3152X / GS-3152XP / GS-3152XSP

- > 52-port Gigabit access switch for intelligent networking scenarios
- > 48x 1-Gigabit Ethernet ports and 4x SFP+ ports (1G / 10G)
- > Basic layer-3 features (static routing, DHCP server)
- > **LANCOM GS-3152XP** additionally supports PoE as per IEEE 802.3af/at (740 W)
- > **LANCOM GS-3152XSP** additionally with hot-swappable PSU (820 W, with 2nd PSU 1,440 W), PoE as per IEEE 802.3af/at, and front-to-back ventilation



LANCOM SPSU-920

- > Hot-swappable PSU for the LANCOM GS-3152XSP
- > Ideal for expanding the PoE budget and power supply redundancy



LANCOM GS-3528X / GS-3528XP / GS-3528XUP

- > 28-port multi-Gigabit access switch for data-intensive networks
- > 12x 2.5-Gigabit Ethernet ports, 12x 1-Gigabit Ethernet ports and 4x SFP+ ports (1G / 10G)
- > Basic layer-3 features (static routing, DHCP server)
- > Ideal in combination with Wi-Fi 6 access points such as the LANCOM LX-6400 and LX-6402
- > **LANCOM GS-3528XP** additionally supports PoE as per IEEE 802.3af/at (370 W)
- > **PREVIEW LANCOM GS-3528XUP** additionally supports PoE as per IEEE 802.3bt (740 W, up to 90 W per port)





Fully Managed SMB Access Switches

LANCOM fully managed access switches are the secure, high-performance networking basis for any industry or application scenario. You gain a supremely reliable all-round solution that is effectively managed.

PROFESSIONAL SWITCHES

– for small and medium-sized networks

LANCOM GS-3152P

- > 52-port Gigabit access switch for cost-effective networking scenarios
- > 48x 1-Gigabit Ethernet ports (including 36 with PoE support as per IEEE 802.3af/at (370 W)) and 4x SFP ports (1G)
- > Basic layer-3 features (static routing, DHCP server)

PREVIEW



LANCOM GS-2328F

- > 28-port Gigabit fiber switch with 20x SFP ports (1G), 4x combo ports (TP / SFP), and 4x SFP+ ports (1G / 10G)



LANCOM GS-3126X / GS-3126XP

- > 26-port Gigabit access switch for cost-effective networking scenarios
- > 24x 1-Gigabit Ethernet downlink ports and 2x SFP+ uplink ports (1G / 10G)
- > Basic layer-3 features (static routing, DHCP server)
- > **LANCOM GS-3126XP** additionally supports PoE as per IEEE 802.3af/at (185 W)

NEW



LANCOM GS-2326+ / GS-2326P+

- > 26-port Gigabit switch with 24x 1-Gigabit Ethernet ports and 2 combo ports (TP / SFP), no fan
- > **LANCOM GS-2326P+** additionally supports PoE as per IEEE 802.3af/at (185 W), quiet fan



NEW



LANCOM GS-3510XP

- > 10-port multi-Gigabit access switch for office environments
- > 4x 2.5-Gigabit and 4x 1-Gigabit Ethernet downlink ports and 2x SFP+ uplink ports (1G / 10G)
- > PoE support as per IEEE 802.3af/at (130 W)
- > Basic layer-3 features (static routing, DHCP server)
- > Ideal in combination with Wi-Fi 6 access points such as LANCOM LX-6400 and LX-6402
- > Zero-noise design

LANCOM GS-2310 / GS-2310P+

- > 10-port Gigabit Ethernet switch with 8x 1-Gigabit Ethernet ports and 2x combo ports (TP / SFP), no fan
- > **LANCOM GS-2310P+** additionally supports PoE as per IEEE 802.3af/at (130W) and fan



Unmanaged Switches

LANCOM unmanaged switches offer the perfect solution for integrating office equipment in simple and small network environments with the best possible price / performance ratio.

LANCOM GS-1108 / GS-1108P

- > Unmanaged Gigabit switch with 8x 1-Gigabit Ethernet ports, no fan
- > **LANCOM GS-1108P** additionally supports PoE as per IEEE 802.3af/at (60 W), quiet fan



For more information about our products and availability please visit:
www.lancom-systems.com/products/network-switches

Wi-Fi 6E

WLAN Indoor Access Points



Wi-Fi 6E access points offer you outstanding Gigabit Wi-Fi according to the latest standard for high-density environments, where many wireless end devices or IoT devices need to be served simultaneously.



Wi-Fi 6E – A NEW ERA OF WIRELESS LAN

With the opening of the additional, interference-free 6 GHz spectrum, the use of Wi-Fi will develop fast in the next few years. Exclusive use of Wi-Fi 6 frequencies means that wireless connections are more stable, and the significantly greater bandwidth and very low latency times make room for an exponential growth in users of Wi-Fi 6E networks.

HIGH-END Wi-Fi

– perfect for high-density environments

PREVIEW



LANCOM LX-6500 / LX-6500E

- > Parallel triband operation at 2.4, 5, and 6 GHz at up to 8,350 Mbps with Wi-Fi 6E
- > 4x4 multi-user MIMO
- > IoT support: Bluetooth Low Energy (5.1) and USB 3.0 (e.g. for LANCOM Wireless ePaper USB)
- > **LANCOM LX-6500E** additionally with integrated Wireless ePaper radio interface

Wi-Fi 6

WLAN Indoor Access Points



Wi-Fi 6 is not just about speed, but also about increasing the average throughput for each individual Wi-Fi client – and that despite a high number of devices on the network.

HIGH-THROUGHPUT Wi-Fi PERFORMANCE

– powerful and versatile



LANCOM LX-6400 / LX-6402

- > Parallel operation at 2.4 and 5 GHz at up to 3,550 Mbps with Wi-Fi 6
- > 4x4 multi-user MIMO
- > 1x 2.5-Gigabit Ethernet port and 1x 1-Gigabit Ethernet PoE port (IEEE 802.3at) or PSU
- > IoT support: Bluetooth Low Energy (5.0) and USB 3.0 (e.g. for LANCOM Wireless ePaper USB)
- > **LANCOM LX-6400** with internal antennas, **LANCOM LX-6402** with external antennas

PREVIEW



LANCOM LX-6200 / LX-6200E

- > Parallel operation at 2.4 and 5 GHz at up to 1,775 Mbps with Wi-Fi 6
- > 2x2 multi-user MIMO
- > 1x 1-Gigabit Ethernet PoE port (IEEE 802.3at) or PSU
- > IoT support: Bluetooth Low Energy (5.1) and USB 2.0 (e.g. for LANCOM Wireless ePaper USB)
- > **LANCOM LX-6200E** additionally with integrated Wireless ePaper radio interface



LANCOM LW-600

- > Parallel operation at 2.4 and 5 GHz at up to 1,775 Mbps with Wi-Fi 6
- > 2x2 multi-user MIMO
- > 1x 1-Gigabit Ethernet PoE port (IEEE 802.3af) or PSU
- > Smoke-detector design with integrated antennas

For more information about our products and availability please visit:
www.lancom-systems.com/products/wireless-lan

Wi-Fi 5 and Wi-Fi 4 WLAN Indoor Access Points



Reliable Wi-Fi is essential for flexible working and surfing with mobile devices. LANCOM offers you professional devices based on Wi-Fi 5 and Wi-Fi 4 for high performance and the best-quality Wi-Fi in small and medium-sized wireless networks.

RELIABLE Wi-Fi

– for law firms, cafés, or medium-sized office environments



LANCOM LN-1700B / LN-1702B

- > Parallel operation at 2.4 and 5 GHz at up to 1,733 Mbps with Wi-Fi 5 and 450 Mbps with Wi-Fi 4
- > 4x4 multi-user MIMO
- > 1x 1-Gigabit Ethernet port and 1x 1-Gigabit Ethernet PoE port (IEEE 802.3at) or PSU
- > IoT support: Bluetooth Low Energy (4.2)
- > **LANCOM LN-1700B** with internal antennas, **LANCOM LN-1702B** with external antennas



LANCOM LW-500

- > Parallel operation at 2.4 and 5 GHz at up to 867 Mbps with Wi-Fi 5 and 300 Mbps with Wi-Fi 4
- > 2x2 multi-user MIMO
- > 1x 1-Gigabit Ethernet port and 1x 1-Gigabit Ethernet PoE port (IEEE 802.3at) or PSU
- > Smoke-detector design with integrated antennas



LANCOM L-322agn DUAL WIRELESS

- > Parallel operation at 2.4 and 5 GHz at up to 600 Mbps with Wi-Fi 4
- > 2x2 MIMO
- > 1x 1-Gigabit Ethernet port and 1x Fast Ethernet port



LANCOM L-321agn WIRELESS

- > Operates at 2.4 GHz or 5 GHz at up to 300 Mbps with Wi-Fi 4
- > 2x2 MIMO
- > 1x 1-Gigabit Ethernet port

WLAN Controllers

Operating LANCOM WLAN controllers means massive time savings for your network administrators. Access points and WLAN routers are configured and controlled centrally and fully automatically. As an alternative, all LANCOM access points can be managed independent of hardware by means of the LANCOM Management Cloud.

CENTRAL WLAN MANAGEMENT

– for standardized control

LANCOM WLC-1000

- > Centralized firmware rollout, monitoring, and management of 25 to 1,000 access points and WLAN routers
- > Integrated hotspot functionality



NEW



LANCOM WLC-30

- > Centralized firmware rollout, monitoring, and management of 6 to 30 access points and WLAN routers
- > Integrated hotspot functionality

vWLC

LANCOM vWLC

- > Software-based WLAN controller for operation in virtual environments

WLAN OPERATING MODELS

LANCOM offers the greatest possible versatility for operating your access points: Be it orchestrated from the LANCOM Management Cloud, centrally managed via a WLAN controller, or in stand-alone mode – with LANCOM you can implement any scenario in line with your needs.

Wireless ePaper Solutions

Accentuate your modern interior design, automate your processes, and improve transparency and information flow. LANCOM Wireless ePaper solutions offer you representative, centrally radio-controlled displays along with professional Wi-Fi in a single infrastructure.



APPLICATIONS

- > For active room signage
- > For visitor badges or table displays at meetings and conferences
- > For menu cards and seat reservations in gastronomy
- > For radio-controlled price labeling in the retail sector

PATENTED TECHNOLOGY

– for parallel and interference-free wireless operation



LANCOM WIRELESS ePAPER DISPLAYS

- > Convenient wireless updates via the LANCOM Wireless ePaper Server
- > Available in three sizes: 12.2", 7.4", and 4.2"
- > Integrated LED with 7.4" and 4.2"
- > Suitable for use in daylight and capable of displaying graphics
- > Battery life up to 5 years
- > Display in black, white, and red



LANCOM WIRELESS ePAPER ROOM SIGNAGE SET

- > Complete set for room signage
- > 1x LANCOM LN-830E Wireless (PREVIEW 1x LANCOM LX-6200E)
- > 5x LANCOM Wireless ePaper Displays 7.4" (WDG-3)
- > 1x LANCOM Wireless ePaper Server for managing any number of access points and up to 1,000 Wireless ePaper Displays
- > Includes sample images, calendar templates, and scripts for connecting to Exchange, Domino, and Google Calendar

PREVIEW



LANCOM LX-6500E

- > Parallel triband operation at 2.4, 5, and 6 GHz at up to 8,350 Mbps with Wi-Fi 6E
- > 4x4 multi-user MIMO
- > Integrated radio interface for controlling LANCOM Wireless ePaper Displays
- > IoT support: Bluetooth Low Energy (5.1) and USB 3.0

PREVIEW



LANCOM LX-6200E

- > Parallel operation at 2.4 and 5 GHz at up to 1,775 Mbps with Wi-Fi 6
- > 2x2 multi-user MIMO
- > Integrated radio interface for controlling LANCOM Wireless ePaper Displays
- > IoT support: Bluetooth Low Energy (5.1) and USB 2.0



LANCOM LN-1700UE

- > Parallel operation at 2.4 and 5 GHz at up to 1,733 Mbps with Wi-Fi 5 (Wave 2) and 450 Mbps with Wi-Fi 4
- > 4x4 multi-user MIMO
- > Integrated radio interface for controlling LANCOM Wireless ePaper Displays
- > Integrated iBeacon technology
- > USB 2.0 port for integrating supported IoT wireless systems
- > Power supply via PoE as per IEEE 802.3at



LANCOM WIRELESS ePAPER USB

- > Wireless ePaper radio upgrade for access points and routers with a USB interface

For more information about our products and availability please visit:
www.lancom-systems.com/products/wireless-lan

Outdoor Access Points



Be it for connectivity between buildings, point-to-point links, as an outdoor Wi-Fi hotspot, or for "last-mile" broadband connectivity – thanks to their robust protective housing with an extended temperature range (-33°C to +70°C), LANCOM outdoor access points withstand even extreme environmental conditions.

MAXIMUM PERFORMANCE WITH Wi-Fi 6

– for high-density environments

PREVIEW



LANCOM OX-6400

- > Parallel operation at 2.4 and 5 GHz at up to 3,550 Mbps with Wi-Fi 6
- > 4x4 multi-user MIMO
- > Bluetooth Low Energy radio interface (5.1) for innovative beaconing applications
- > Robust IP67 housing
- > PoE passthrough
- > Integrated sector antennas for 2.4 and 5 GHz

PREVIEW



LANCOM OX-6402

- > Parallel operation at 2.4 and 5 GHz at up to 3,550 Mbps with Wi-Fi 6
- > 4x4 multi-user MIMO
- > Bluetooth Low Energy radio interface (5.1) for innovative beaconing applications
- > Robust IP67 housing
- > PoE passthrough
- > Includes four omni-directional antennas and alternative connection of optional sector antennas

PREVIEW



LANCOM OW-602

- > Parallel operation at 2.4 and 5 GHz at up to 1,775 Mbps with Wi-Fi 6
- > 2x2 multi-user MIMO
- > Bluetooth Low Energy radio interface (5.1) for innovative beaconing applications
- > Robust IP67 housing
- > Includes four omni-directional antennas and alternative connection of optional sector antennas



OUTDOOR WLAN WITH Wi-Fi 5 AND Wi-Fi 4

– for any weather



LANCOM OAP-1700B

- > Parallel operation at 2.4 and 5 GHz at up to 1,733 Mbps with Wi-Fi 5 (Wave 2) and 450 Mbps with Wi-Fi 4
- > 4x4 multi-user MIMO
- > Bluetooth Low Energy radio interface (4.2) for innovative beaconing applications
- > Robust IP67 housing
- > Integrated sector antennas for 2.4 and 5 GHz



LANCOM OAP-1702B

- > Parallel operation at 2.4 and 5 GHz at up to 1,733 Mbps with Wi-Fi 5 (Wave 2) and 450 Mbps with Wi-Fi 4
- > 4x4 multi-user MIMO
- > Bluetooth Low Energy radio interface (4.2) for innovative beaconing applications
- > Robust IP67 housing
- > With eight external antenna connectors with pre-mounted omni-directional antennas

For more information about our products, antenna accessories, and availability, please visit: www.lancom-systems.com/products/wireless-lan

Industrial Access Points



Industrial access points from LANCOM Systems are specially designed for harsh indoor environments. Thanks to their special dust-proof housings with an extended temperature range (-20°C to +50°C), industrial access points form the basis for reliable Wi-Fi in warehouses and logistics, across covered outdoor areas, or on mobile machinery.

DUST-PROOF HOUSINGS

– for harsh indoor environments



LANCOM IAP-822

- > Parallel operation at 2.4 and 5 GHz at up to 867 Mbps with Wi-Fi 5 and 300 Mbps with Wi-Fi 4
- > 2x2 MIMO
- > Robust all-metal IP50 housing
- > Reliable even at demanding temperatures (-20°C to +50°C)

LANCOM IAP-821

- > Operates at 2.4 or 5 GHz at up to 867 Mbps with Wi-Fi 5 or 300 Mbps with Wi-Fi 4
- > 2x2 MIMO
- > Robust all-metal IP50 housing
- > Reliable even at demanding temperatures (-20°C to +50°C)



Versatile Wi-Fi Guest Access

Guest access is at its best when it is easy to set up, offers guests user-friendly access to the Internet, and assures operators that their own company network and guest network are secure from unauthorized access. LANCOM helps you implement reliable guest hotspots with the LANCOM Public Spot Options or in cloud-based networks via the LANCOM Management Cloud.

HOTSPOT OPTIONS

– for user-friendly guest access

LANCOM
Public Spot

OPTION

LANCOM PUBLIC SPOT OPTION

- > Flexible login procedures
- > Extensive design options regarding period of use or validity of guest access
- > Secure separation of guest access from the internal network
- > Voucher and portal layout can be customized to the individual design of the company
- > Connection to external servers or property management systems via XML, FIAS, or RADIUS interfaces

LANCOM
PMS
Accounting +

OPTION

LANCOM PUBLIC SPOT PMS ACCOUNTING PLUS OPTION

- > Combines your Public Spot solution with your Property Management System
- > Internet fees can be charged to the room bill
- > Suitable for PMS systems with FIAS interface, such as Micros Opera, Fidelio Suite8, or Protel
- > Requirement: LANCOM Public Spot Option

CLOUD-MANAGED HOTSPOT



The LANCOM Management Cloud (LMC) offers the practical option to provide one or more simple Wi-Fi hotspots with just a few clicks. Unlike a non-Cloud-managed network, there is no need for an additional gateway or a WLAN controller featuring the LANCOM Public Spot Option – all you do need is a valid LMC license on the local devices that support the hotspot.

LANCOM Service & Support

The right services for our partners

How can you plan your customers' network as efficiently as possible but also for the long-term? Is your customer in the operational phase of his network and you need to support him when he has problems? Is your customer growing and you are looking for ways to optimize and update their network? You can count on us: As our partner, you can rely on individual support from us.

ALL-ROUND SUPPORT

Take this path together with us as your manufacturer. For every phase of the network's lifecycle, we provide fitting service products and comprehensive trainings.



SERVICE PACKAGES

– the right service, whatever the phase

STARTING ON THE ROAD TO SUCCESS



- LANCOM WLAN Survey Service – Wi-Fi coverage service for the successful planning and implementation of wireless infrastructures



- LANCOM Config Service – Professional support for the configuration of your LANCOM installations



- LANCOM Warranty Basic Option¹⁾ – Warranty extension incl. security updates for LANCOM devices to 5 years



- LANCOM Warranty Advanced Option¹⁾ – Warranty extension incl. security updates for LANCOM devices to 5 years and advance replacement by the next business day



- LANCOM Service Pack 24/7 – Short-term, solution-oriented emergency support for all Unified Firewalls and devices of service category XL

¹⁾ Applies only for EU.

²⁾ On request, otherwise remotely.

SUPPORT FOR FAIL-SAFE OPERATIONS



- LANCOM Emergency Support – Short-notice, solution-oriented emergency support with minimum response times



- LANCOM Extended Support Times – Exclusive off-hours support



- LANCOM Premium Support Access – Premium support access for optimally secured networks



- LANCOM MSP-Care-24/7 – Full service package for managed service providers who secure high-availability network scenarios



- LANCOM Consulting Day – Network optimization with a LANCOM Consultant on-site with you²⁾

Further information about LANCOM Service & Support as well as our warranty and support conditions is available at: www.lancom-systems.com/service-support

LANCOM Training Center

With our unique training center, we at LANCOM aim to successfully transfer our know-how from the manufacturer to specialist resellers and technicians. You can apply the new knowledge gained from the workshop: Benefit from greater efficiency in configuring LANCOM devices and in the implementation of solutions. Those who benefit most from our optimally coordinated workshops include specialist resellers, system-vendor technicians, system administrators, and IT decision-makers.

OPTIMIZATION AND TRAINING

– LANCOM know-how transfer



PROFESSIONAL WORKSHOPS

- > Professional Workshop WAN / WLAN
- > Professional Workshop Unified Firewall



SPECIALIST WORKSHOPS

- > Specialist Workshop WAN
- > Specialist Workshop WLAN

CONTACT

For questions about the LANCOM workshops, as well as for advising individual trainings, feel free to contact us.

Training Center

+49 2405 49 93 6-220

E-mail

training@lancom.de



LANCOM CERTIFICATIONS

LANCOM certifications demonstrate comprehensive network expertise and help you to stand out among the many experts.

IMPORTANT ADDITIONAL OFFER

In the LANCOM workshops, you have personally demonstrated that you can successfully incorporate products from LANCOM in the planning and implementation of solutions for complex scenarios. The LANCOM certifications are an official qualification from LANCOM. You receive a certificate to confirm your expertise.