

ADF pickup roller assembly

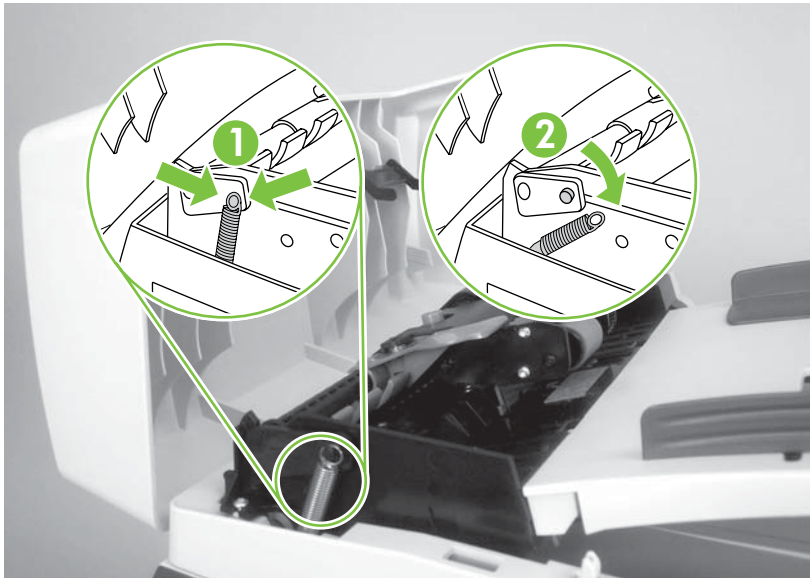
1. Open the ADF cover.

Figure 5-20 Replacing the ADF pickup roller assembly (1 of 6)



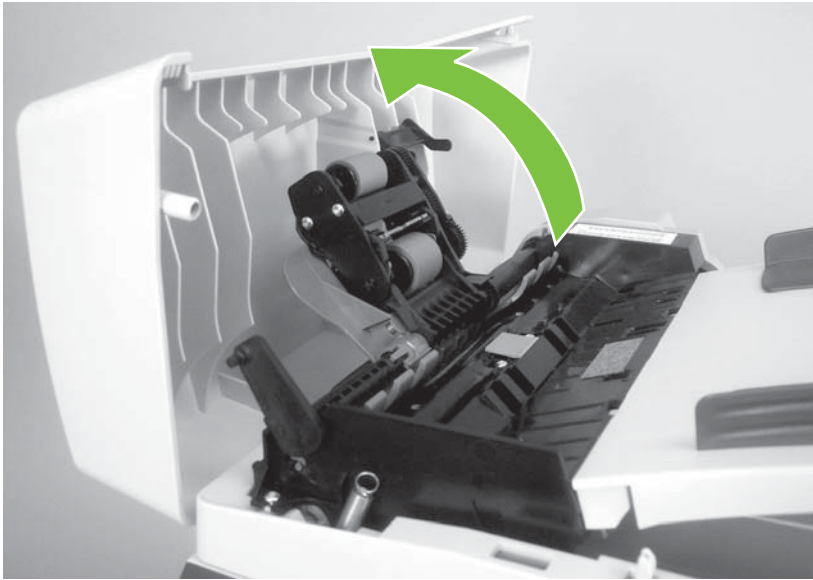
2. Lift the load spring off of the post on the ADF pickup roller assembly.

Figure 5-21 Replacing the ADF pickup roller assembly (2 of 6)



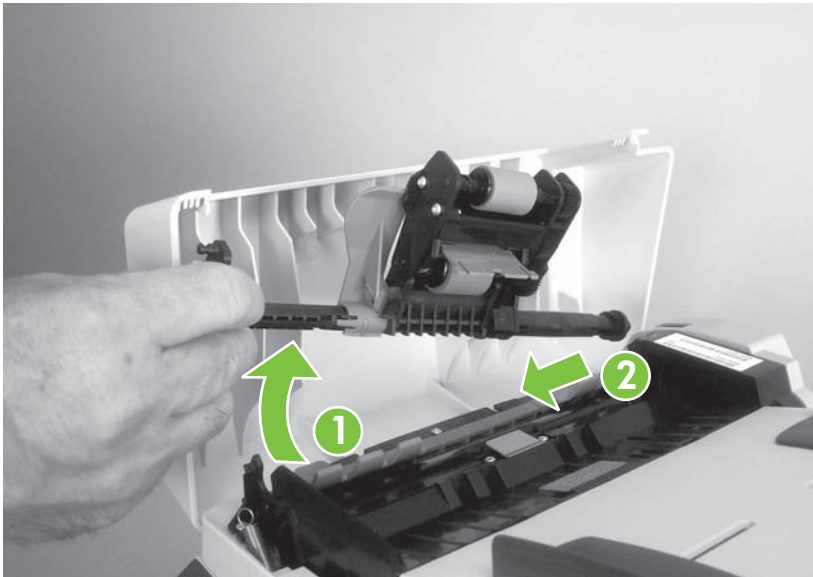
3. Rotate the ADF pickup roller assembly.

Figure 5-22 Replacing the ADF pickup roller assembly (3 of 6)



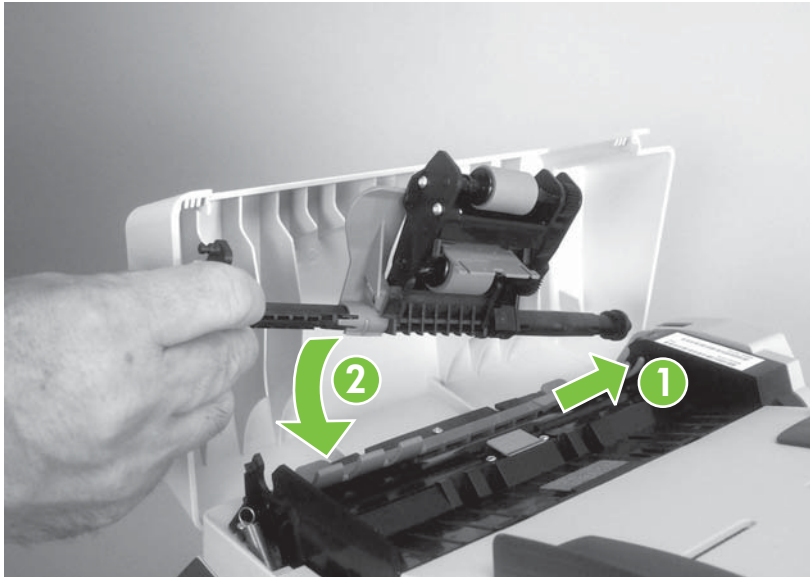
4. Lift the ADF pickup roller assembly, slide the assembly toward the front of the product to disengage the gear-end of the assembly, and then lift the assembly off of the product.

Figure 5-23 Replacing the ADF pickup roller assembly (4 of 6)



5. Insert the gear-end of the replacement ADF pickup roller assembly into the product and then lower the assembly into place.

Figure 5-24 Replacing the ADF pickup roller assembly (5 of 6)



6. Reattach the load spring and then close the ADF cover.

Figure 5-25 Replacing the ADF pickup roller (6 of 6)

