

# WinTV-quadHD PCIe Board

## Quick Installation Guide for Windows

Hauppauge Inc.  
909 Motor Parkway  
Hauppauge, NY 11788

Telephone: 631-434-1600  
Tech Support: 631-434-3197  
Email: techsupport@hauppauge.com

## Contents of the WinTV-quadHD package

- **WinTV-quadHD PCIe board**, with four ATSC/QAM TV receivers
- **IR receiver cable**
- **Credit card size remote control transmitter**
- **WinTV v10 Download and Activation code card** (WinTV v10 Activation Code)

## What is ATSC and Clear QAM TV?

**ATSC digital TV** is over-the-air digital TV for North America. ATSC digital TV typically requires an antenna for reception, and is currently broadcast in 200 cities, with over 1500 TV stations.

ATSC digital TV is transmitted in several resolutions, from “standard definition” which is similar to cable TV, up to high definition which has about 16 times the resolution of analog cable TV. In any resolution, ATSC digital TV gives sharper pictures than analog cable TV and near CD quality sound.

**Clear QAM TV channels** are digital cable TV channels which are broadcast on cable TV “in the clear”. These digital cable TV channels are broadcast in various resolutions, from standard definition up to high definition. Please check with your local cable TV

1

operator on the availability of clear QAM TV channels.

WinTV-quadHD has four built-in tuners for digital ATSC and digital clear QAM TV. To receive ATSC, you will need an antenna. To receive digital clear QAM cable TV, you will need a cable TV connection.

It uses your PC or laptop’s CPU for decoding and displaying digital TV programs on your PC screen. The decoding of high definition ATSC is very processor intensive, and the smoothness of high definition TV programs depends upon how fast your PC or laptop system is. Other PC activities that consume CPU resources might affect the display of ATSC digital TV. Slow video, jerky video and momentary pausing of video are all results of a CPU which is temporarily being used by other activities.

The supplied portable antenna is designed for ATSC digital TV reception, and will work within 10 miles of an ATSC transmitter (reception might be limited by obstructions such as steel buildings).

For the best ATSC TV reception, a roof top ‘High gain’ antenna is recommended. In the U.S., a good ATSC digital antenna selector can be found at [www.antennaweb.org](http://www.antennaweb.org)

## Installing the WinTV-quadHD device on your PC

To install, switch off the computer and remove the computer cover.

**Note:** Your PC or your WinTV-quadHD PCIe card could be damaged by electrostatic discharge. Avoid this by touching the chassis of your PC before you open the PC or touch the PCIe board.

- Locate a free PCIe slot. Unscrew and remove the metal cover plate which covers the back of the empty slot.
- Plug the WinTV-quadHD board into the PCIe slot (a X1 or X16 slot will work), and screw the metal cover plate to the PC.
- Replace the computer cover.

2

## Installing the WinTV v10 application for Windows

**Note:** Please disable your antivirus software for the duration of the software installation. We find that sometimes antivirus apps block the temporary folders needed for the installation of WinTV.

**Note:** An Internet connection is required for download and software activation.

You will find the website and directions on the **WinTV v10 Download and Activation code** card along with the **Activation code** for WinTV v10:

[www.hauppauge.com/wintv10](http://www.hauppauge.com/wintv10)

### Step 1:

Download the WinTV v10 installer by clicking the download button. The WinTV v10 Installer is normally saved in the **Download folder** on your PC

### Step 2:

Run **wintv10setup** from the Download folder on your PC. Halfway through the installation, a message will pop up asking for you to enter the Activation Code.

### Step 3:

At the **Activation required** screen, click on **Enter Activation code** and enter the

4



activation code which was printed on the **WinTV v10 Download and Activation code** card. You do not need to enter the dashes, and you can use upper or lower case characters.

### Step 4:

When the installation is complete, you will find two new icons on your Windows desktop. The **WinTV application** icon and the **WinTV Advanced Options** icon. The WinTV Advanced Options icon, when clicked, has a number of useful WinTV v10 utilities such as to Empty EPG, Erase channel database and others.

Double click on the **WinTV icon** and the WinTV application will run. On the first run of WinTV, it will automatically go through the TV source selection and WinTV will scan for channels.

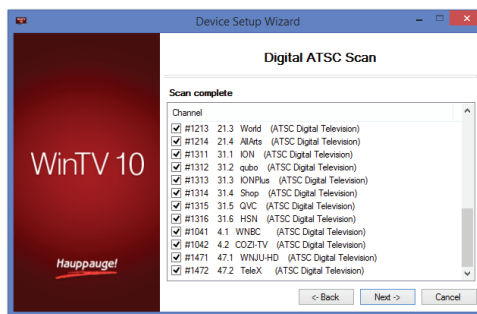
In **Device Setup Wizard**, check the **Digital ATSC** box and click **Next**.

Click **Next** to start the channel scan.

As the WinTV application scans for channels, your channel list will be populated with channels where there is a signal lock.

**Note:** if you complete the channel scan and no channels are detected, you can try the following: check your antenna connections, reposition your antenna, add an antenna signal booster, or get a larger antenna. Information on rescanning for TV channels can be found here: [www.hauppauge.com/rescan](http://www.hauppauge.com/rescan)

5



## Connecting the TV Signal

Plug an antenna for ATSC digital TV reception, or cable TV for clearQAM digital TV reception, into the TV connector on WinTV-quadHD.

**TV connector:** for either cable TV for clear QAM digital, or a TV antenna for ATSC TV. Screw the antenna coax cable or the cable TV coax cable into the TV Connector.

**ATSC digital TV** is over-the-air digital TV for North America. ATSC digital TV typically requires an antenna for reception, and is currently broadcast in 200 cities, with over 1500 TV stations. ATSC is HD and is free: there are no monthly charges for ATSC TV.

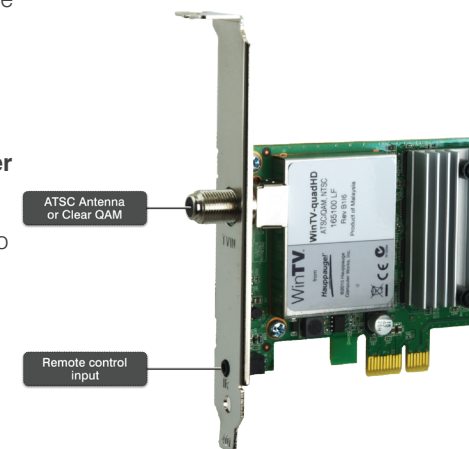
**Note:** If you are using ATSC HD TV, it is recommended to use a roof top antenna during the first time installation. This will provide better signal quality than a portable antenna.

**Clear QAM TV channels** are digital cable TV channels which are broadcast “in the clear”. Clear QAM is not available from all cable TV operators so check with your local operator for clear QAM.

## Connecting the remote control receiver cable

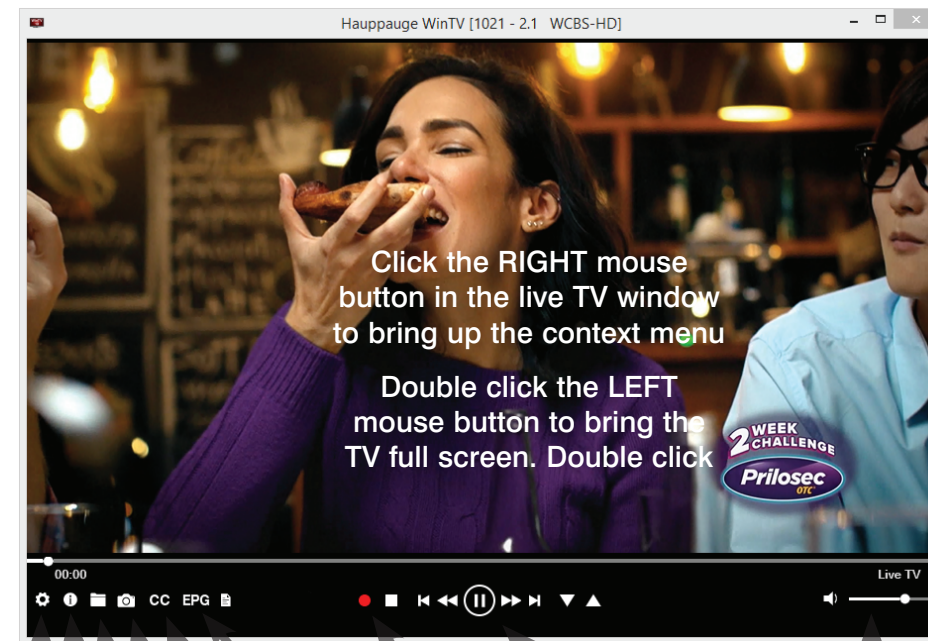
Plug the remote control receiver cable into the **Remote control input** on the WinTV-quadHD.

Position the round receiver sensor (at the end of the remote control receiver cable) where it can be “seen” by the remote control transmitter. This is normally at the front of your PC.



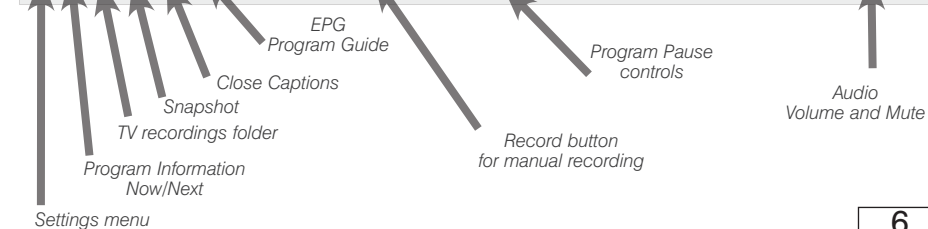
3

## Using the WinTV v10 application



Click the **RIGHT** mouse button in the live TV window to bring up the context menu

Double click the **LEFT** mouse button to bring the TV full screen. Double click



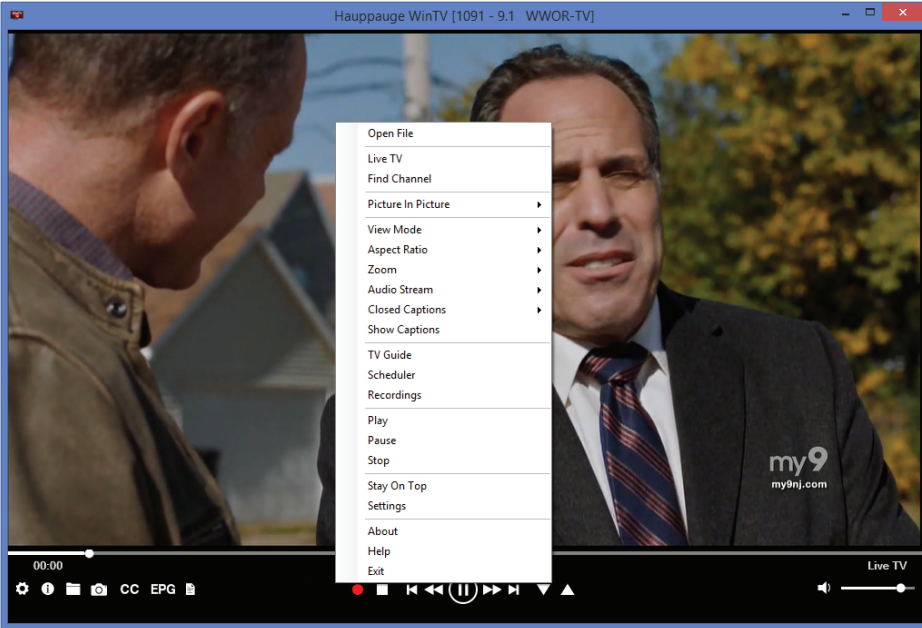
6

# The WinTV v10 Menu

## The Main WinTV Menu (context menu)

**Right-click** inside the TV window or click on the **menu button** on the WinTV toolbar to display the **Context Menu**. The following options are available.

«**Open file**» Open up a TV recording or other video file for playback in the WinTV



7

Record in the details view. The scheduled recording is added to the Scheduler window. To rescan all frequencies for TV Guide information, click on Update EPG.

«**Scheduler**» The Scheduler allows you to record a TV program at a certain date and time on the specified channel. It lists all scheduled recordings added by the TV Guide as well as any manual recordings that have been set. From here you can Edit or Cancel (delete) existing schedule entries.

To schedule a new recording, click on the Add button. You will need to select the channel, set the start time, duration etc. and confirm with a click on the Record button.

**Note:** *The WinTV application does not have to be running for a scheduled recording to work, but your PC will need to be either turned on or in Standby (not Hibernate). All scheduled recordings are performed in the background by the task "WinTVRec.exe". If a recording is started while you are watching live TV, WinTV will display the TV program being recorded.*

«**Settings**» Click the Settings button to open the **WinTV Settings** window.

«**Settings**» **General:** Select the language and the preferred Audio and subtitle languages. You can also specify the video renderer to be used and the TV shape.

«**Settings**» **Capture:** Specify where the recordings, pause files and snapshots will be stored.

«**Settings**» **Devices:** To rescan for TV channels, select the device you wish to configure from the list and click on Tuner Setup.

«**Settings**» **All Channels:** You can enable or disable the listing of channels with the **select box in the first column**. The Context menu allows you to select all channels, to delete the selected channel(s), to watch the selected channel or to display details about the channel.

«**Settings**» **Favorites:** Here you can define groups of your favorite channels.

«**Settings**» **Advanced Options:** From this menu you have options for:

10

window.

«**Find Channel**» This brings up the Channel List. Click on a channel entry to select this channel for watching. To filter the channel list, type in a channel name (or a part of the name). Click on the Pin-Button to permanently show the channel list. The channel list will also be displayed if you just enter any character (a - z) in live TV mode.

## «Picture in Picture»

There are four ways to use the Dual Tuner function on WinTV-quadHD:

- 1. Recording up to four overlapping TV programs:** you can schedule up to four overlapping TV shows from the TV Guide or manually. Using four tuners is automatic as long as you do not schedule more than four overlapping recordings.
- 2. Watch one live program while another program is being recorded:** you can watch one live program in WinTV v10 and continue watching, when a scheduled recording takes place. The free tuner is used automatically for the recording.
- 3. Watch four TV tuner Picture-in-Picture:** in Picture in Picture, click **Four Tuner**. You will now see the WinTV window with four sections, one for each tuner.

To change the channel on a tuner, **RIGHT click** on the quadrant you want to change, then click **Select channel** and select your channel. Do this for each tuner.

To exit four tuner mode, select the TV program in the quadrant you want to watch and **DOUBLE LEFT click**.

- Automatically starting TV when WinTV v10 opens
- Disable the Now/Next channel information
- Disable any On Screen Display graphics
- Auto convert the standard .TS recordings to the .mpg format

## «Settings» Decoders

The Decoders section allows you to test and use third party video/audio decoders. (The use of third party decoders is an unsupported feature but helps in some situations.)

## Infrared Remote Control

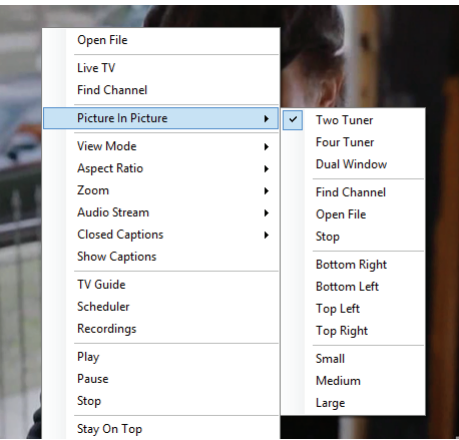
The WinTV-quadHD has the IR receiver mounted at the end of the IR receiver cable, the round receiver sensor.

Before using the remote control, insert the battery into the remote control, following the correct polarity.

On start up of Windows, the IR software (**ir.exe**) is loaded from the Startup folder ("AutoStart IR"). When ir.exe is loaded, you see a black remote control icon in the system tray area on the Windows task bar (next to the clock).

## Notes on Using the Remote Control

- When using the Hauppauge remote control, point it towards the round IR receiver sensor.
- The WinTV application only responds to the remote control if it is the active window.
- If the IR is not responding, run the "**Restart IR**" shortcut in the Start menu or in the **WinTV Advanced Options** folder on your Desktop.



8

**4. Watch two separate WinTV windows, each with their own TV channel:** in **Picture in Picture**, click **Dual Window**. You will now have two completely separate windows, each with their own TV program.

## «View Mode»

Normal, No Title and Fullscreen are available. In **Normal** view all control elements and buttons are visible. In the **No Title** view only the TV image is shown. In the **Fullscreen** view the TV image fills the whole screen. You can also switch between these views by double clicking inside the TV window, or by pressing <Ctrl> W on the keyboard.

## «Audio Stream»

If the current TV broadcast offers more than one audio stream / language, you can select the other stream / language here.

## «Show Captions»

Select this option to display **close captions**. If close captions are available, the On Screen Display message "Captions: On" is shown for a few seconds, and close captions are displayed. If close captions are not available, the OSD message does not appear. To turn off close captions, select "Show Captions" again.

**Note:** *captions are recorded when making a WinTV recording. When playing back a .ts recording, captions can be displayed by selecting Show Captions.*

## «Stay On Top»

If enabled, the WinTV application window will remain in view over any other application windows, even if it is not selected. To turn on, select "Stay On Top". To turn off, select this option again.

## «TV Guide»

Some ATSC digital TV channels transmit Electronic Program Guide information (EPG). This information is collected and displayed in the TV Guide window. Click a program title with your mouse to see more details about the entry. To record a program, click on

9

## WinTV Keyboard Commands

- |                              |                               |
|------------------------------|-------------------------------|
| Next Channel = Plus (+)      | Live (now) = Ctrl + C         |
| Previous Channel = Minus (-) | Full Screen = Ctrl + W        |
| Increase Volume = Page up    | Subtitles on / off = Ctrl + S |
| Decrease Volume = Page down  | WinTV Settings = Ctrl + I     |
| Show Channel List = Ctrl + L | Start TV = Alt + T            |
| Mute = Ctrl + M              | Last Channel = Alt + P        |
| Display Info = Ctrl + O      | Start Recording = Alt + R     |
| Stream Details = Ctrl + D    | Stop = Alt + S                |
| Teletext = Ctrl + T          | Open File = Alt + F           |
| Pause Video = Ctrl + Q       | Make Snapshot = Space Bar     |
| Play = Ctrl + P              | Change Aspect Ratio = Ctrl +  |
| Skip Ahead = Ctrl + F        | Exit Full Screen = Esc        |
| Skip Back = Ctrl + R         |                               |

## Troubleshooting

### How Can I Rerun the Channel Scan?

To scan for channels again, in the main WinTV window click on the **gear icon** (lower left hand corner of WinTV), then select the "**Devices**" tab, click on the **WinTV-quadHD** entry and click on "**Tuner Setup**".

Click **Next** and **Next** to start the channel scan.

A video showing how to do the channel scan can be found here:

[www.hauppauge.com/rescan](http://www.hauppauge.com/rescan)

11