

# Acute Heart Failure Clinical Pathway Adoption

Authors: H&V Team

## Problem

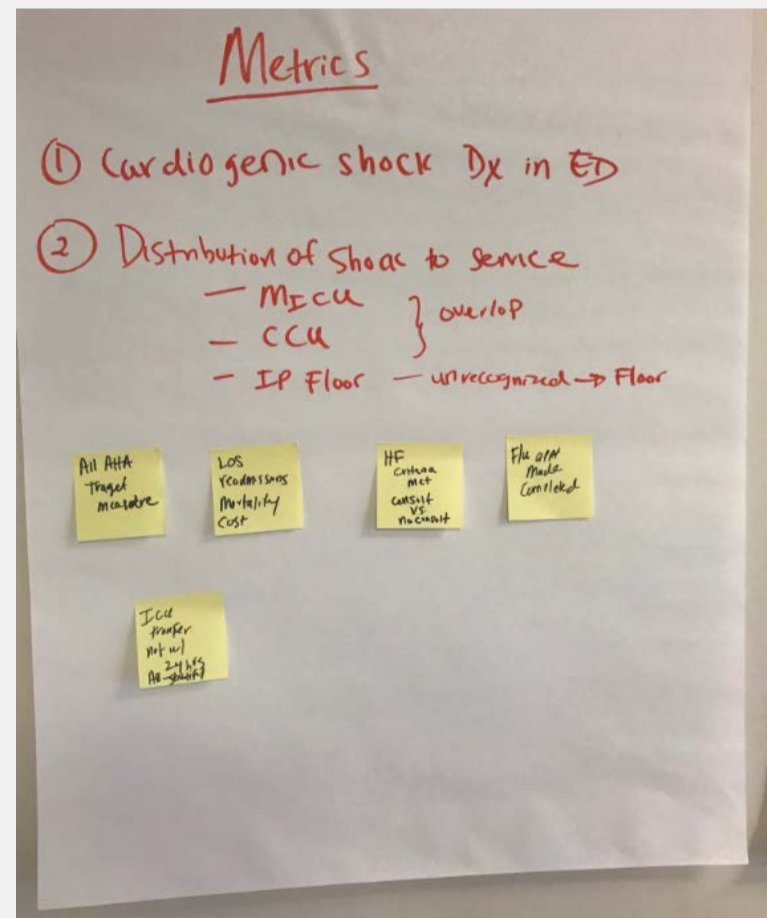
- No standard approach to ensure clinicians follow the ACCF/AHA Heart Failure (HF) Guidelines
- No concise way of delineating roles or ensuring all steps are checked in the treatment of heart failure

## Goal

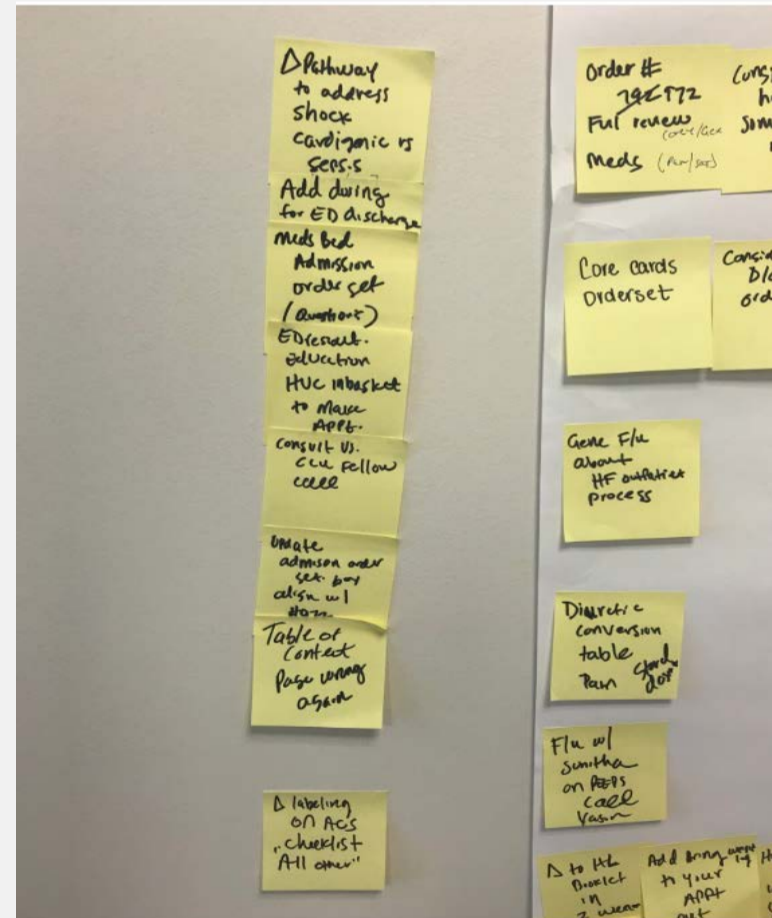
- To provide a coordinated and clear guidance in the management of heart failure
- To create a guideline for providing evidence-based practice and consistent care to all patients
- To provide a tool on clear next steps in the management of heart failure

## Strategy

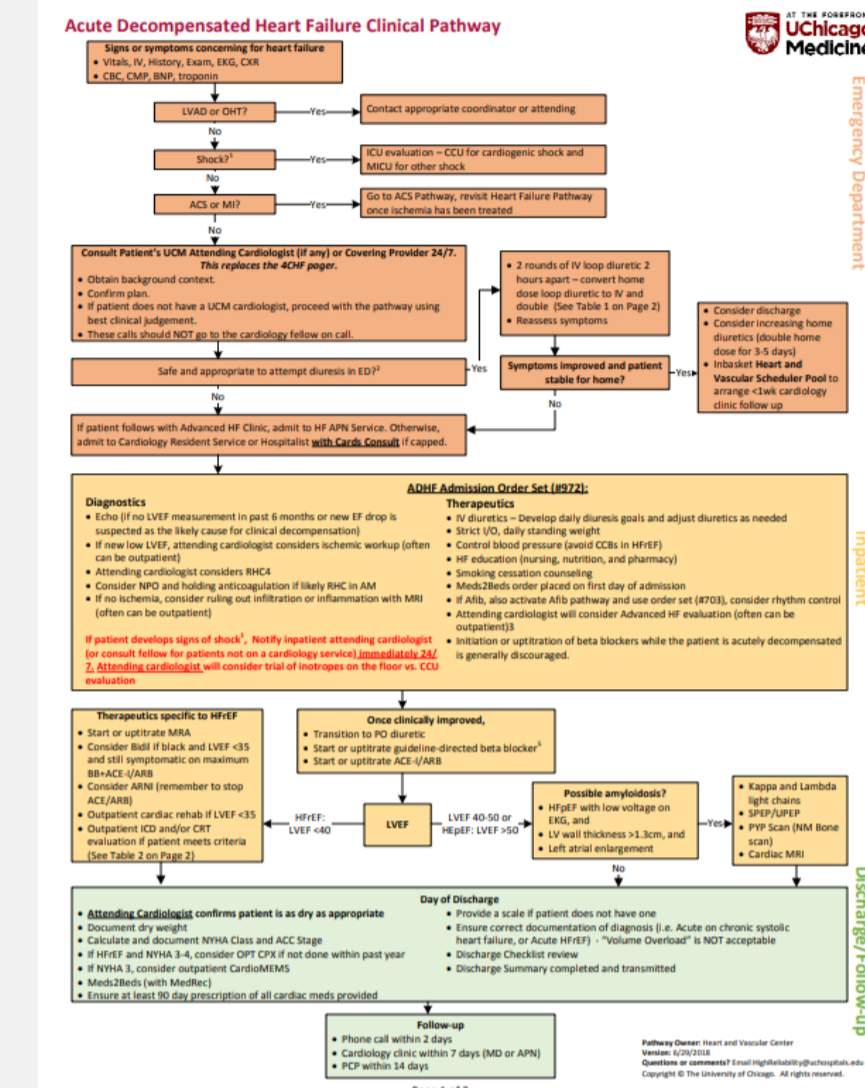
- Developed an algorithm based on the ACCF/AHA Heart Failure Guidelines
- Imbed high priority HF metrics into pathway to meet AHA/hospital targets
- Mapped out the recommendations, strategies, interventions, treatments, and diagnostic testing via process mapping tools (Visio)
- Created a "Managing Your Heart Failure" booklet for patients



Brainstorming session notes



## Results



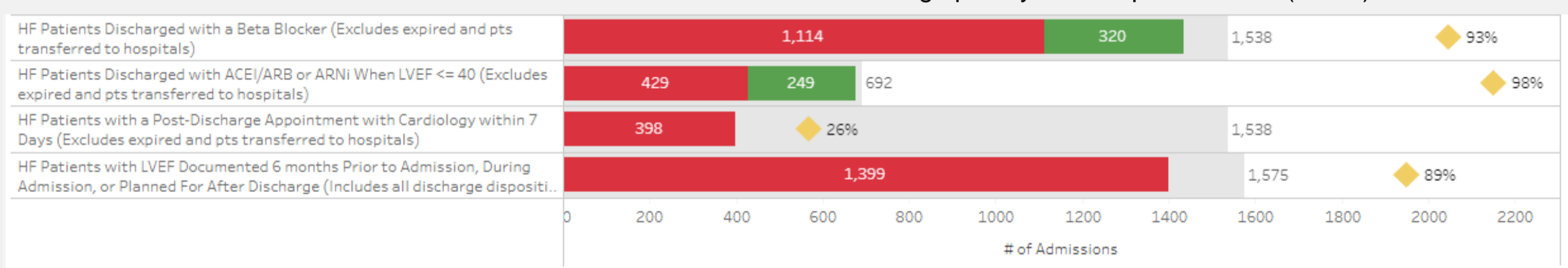
- Created a clinical pathway in AgileMD
- Highest utilized H&V pathway ~ data last 18 weeks
- Helps meet Get with the Guidelines metrics – see graph below; metrics embedded within pathway
  - 3 out of the 4 high priority HF metrics are ~90%

### High Priority HF Metrics:

- HF Patients Discharged with a Beta Blocker
- HF Patients Discharged with ACEI/ARB or ARNi When LVEF <= 40
- HF Patients with a Post-Discharge Appointment with Cardiology within 7 Days
- HF Patients with LVEF Documented 6 months Prior to Admission, During Admission, or Planned For After Discharge

Finalized pathway (above)

High priority metrics performance (below) ~ as of 9/13/22



## Next Steps

- Acute Heart Failure Clinical pathway has shown to be adopted by clinicians (per utilization rates)
- Next steps:
  - Continue monitoring high priority HF metrics
  - Determine the impact of pathway on capacity and access, specifically readmissions
  - Develop strategies to improve the metric, "HF Patients with a Post-Discharge Appointment with Cardiology within 7 Days"

## Acknowledgements

- Viktoriya Kagan, CCRN, MSN, APN-BC