

WHAT'S SO COOL ABOUT THE JABRA BT5010?

The sliding boom arm assures optimal voice pick-up no matter the conditions

Sliding boom arm that allows you to answer and end calls

Switch to quiet mode and stay in contact thanks to the vibrating or visual alert

Up to 10 hours talk time and up to 300 hours standby

The Jabra BT5010 is MultiPoint™



Jabra
BT5010



Sliding boom arm to answer and end calls

Sliding boom arm for optimal voice pick-up

Visual and vibrating alert

Features and Specifications

- Wind-noise reduction technology
- Up to 10 hours talk time and up to 300 hours standby
- Vibrating and visual alert
- MultiPoint connections
- Rechargeable battery with charging option from AC power supply or PC via USB cable
- Multi-coloured LED for status on Bluetooth, battery, incoming call and charging
- Weighs 20 grams
- Operating range up to 10 metres
- Answer/end call, voice dialing*, last number redial*, reject a call*, put a call on hold*, and mute a call
- Bluetooth 2.0 supporting headset and hands-free profiles

* Device dependent

M04_BT5010_01.11/06

Freephone customer support numbers:

Denmark: 70252272
Finland: 00800 722 52272
Italy: 800 786543
Norway: 800 61272
Spain: 900 984 542
Sweden: 020792522
UK: 0800 327 026

E-mail: support.no@jabra.com
E-mail: support.no@jabra.com
E-mail: support.it@jabra.com
E-mail: support.no@jabra.com
E-mail: support.es@jabra.com
E-mail: support.no@jabra.com
E-mail: support.uk@jabra.com

**High performance
Bluetooth® headset**

Jabra



Jabra BT5010



More voice - Less noise

Tough conditions...

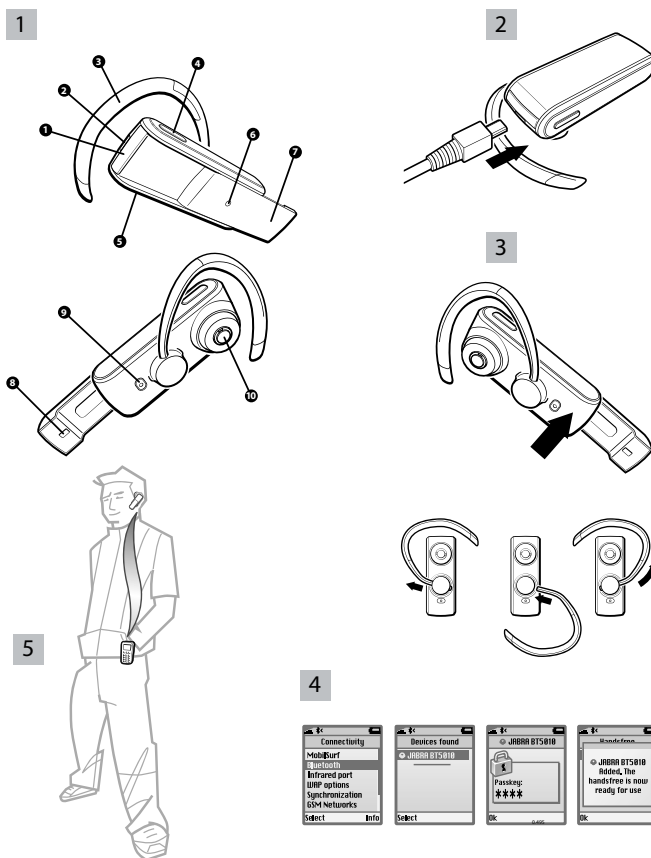
Imagine yourself at the airport, the wind tugging at your hair as you step out of the arrivals hall. While waiting for a taxi, you need to put in a call to the office. But how can you get your message across, when the words are just carried away in the breeze?

Straight talk

With the new Jabra BT5010 Bluetooth headset, being heard is not a problem. Wind noise is reduced to a minimum so your voice comes storming through – thanks to the improved voice pick-up and a specially designed sliding boom arm. It also allows you to answer and end calls. Altogether it means you can keep working effectively and undisturbed.

Created for business

The new Jabra BT5010 with its sliding boom arm is much more than Business as Usual. It's yet another example of Jabra taking business communication, usability and design to a higher level. This exclusive headset is designed for business giving you advanced functionalities, exceptional comfort and industry-leading design.



- 1. Answer/end button
- 2. Charge connector
- 3. Earhook
- 4. Volume up (default)
- 5. Volume down (default)
- 6. Light indicator (LED)

- 7. Sliding boom arm
- 8. Microphone
- 9. On/off/pairing button
- 10. Speaker

1
About
your Jabra
BT5010

2
Charge
your headset

3
Turn on
your Jabra
BT5010

4
Pairing with
a phone or
other device

5
Wearing
your Jabra
BT5010

Quick start guide

Pairing the Jabra BT5010 to a Bluetooth mobile phone:

1. Charge the Jabra BT5010 until the light indicator (LED) turns green (approximately 2 hours)
2. Make sure that the Jabra BT5010 is turned off. Press the on/off/pairing button until the LED turns solid blue
3. Set your Bluetooth phone to "discover" the Jabra BT5010 (see your device user guide)
4. Press Yes or OK when asked if you want to pair with the Jabra BT5010
5. Enter passkey or PIN = 0000 (4 zeros), then press Yes or OK
6. Your phone or other device will confirm when pairing is complete

Making a call

When you make a call from your mobile phone, the call will automatically transfer to your headset*.

Answering a call via the sliding boom arm

To answer an incoming call just extend the boom arm to an open position and to end a call slide the boom arm back to a closed position.

* Phone dependent

Jabra