

SPECIES INFORMATION SHEET

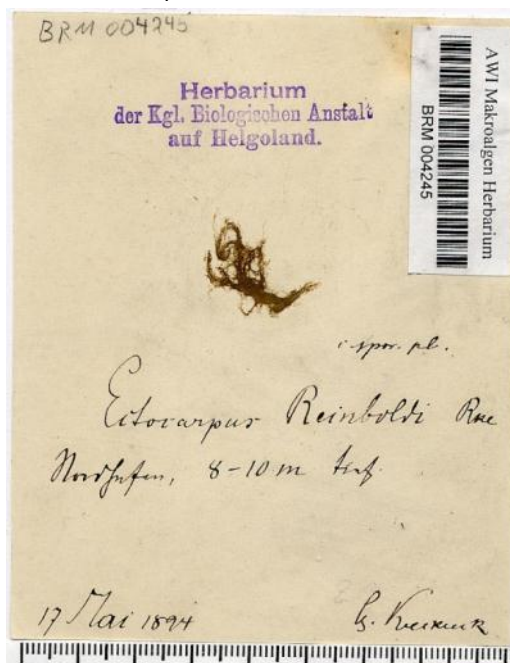
Botrytella reinboldii

English name: –	Scientific name: <i>Botrytella reinboldii</i>	
Taxonomical group: Class: Phaeophyceae Order: Ectocarpales Family: Chordariaceae	Species authority: (Reinke) Kornmann & Sahling 1988	
Subspecies, Variations, Synonyms: <i>Ectocarpus reinboldii</i> Reinke 1892, <i>Polytretus reinboldii</i> (Reinke) Sauvageau 1900	Generation length: probably annual	
Past and current threats (Habitats Directive article 17 codes): Unknown (U)	Future threats (Habitats Directive article 17 codes): Unknown (U)	
IUCN Criteria: –	HELCOM Red List Category:	DD Data Deficient
Global / European IUCN Red List Category NE/NE	Habitats Directive: –	
Protection and Red List status in HELCOM countries: <u>Denmark</u> –/–, <u>Estonia</u> –/–, <u>Finland</u> –/–, <u>Germany</u> –/–, <u>Latvia</u> –/–, <u>Lithuania</u> –/–, <u>Poland</u> –/–, <u>Russia</u> –/–, <u>Sweden</u> –/DD		

Distribution and status in the Baltic Sea region

Distribution area of *B. reinboldii* is the western Baltic Sea with records in Sweden and Denmark. It has never been found south of the Belt Sea. Outside the Baltic this species is also rarely recorded. It is distributed in the northern Atlantic with one old record from Helgoland (Reinke 1892 in Kornmann & Sahling 1988), some records from the British Isles (Newton 1931) and one record from Norway (Svalbard). The species can also be found in Asia – China and Japan (www.algaebase.org).

All Baltic occurrences are restricted to Denmark and the west coast of Sweden. All except one Danish record refer to findings before 1995. In Sweden there are two records from two geographically separated locations (Fladengrund and Göteborg). In Denmark the species has been found five times from four geographically separated locations (Skagen – two records, Frederikshavn, Samsö and north of Lolland). The only recent record is from a location north of Lolland (Nielsen 2005).

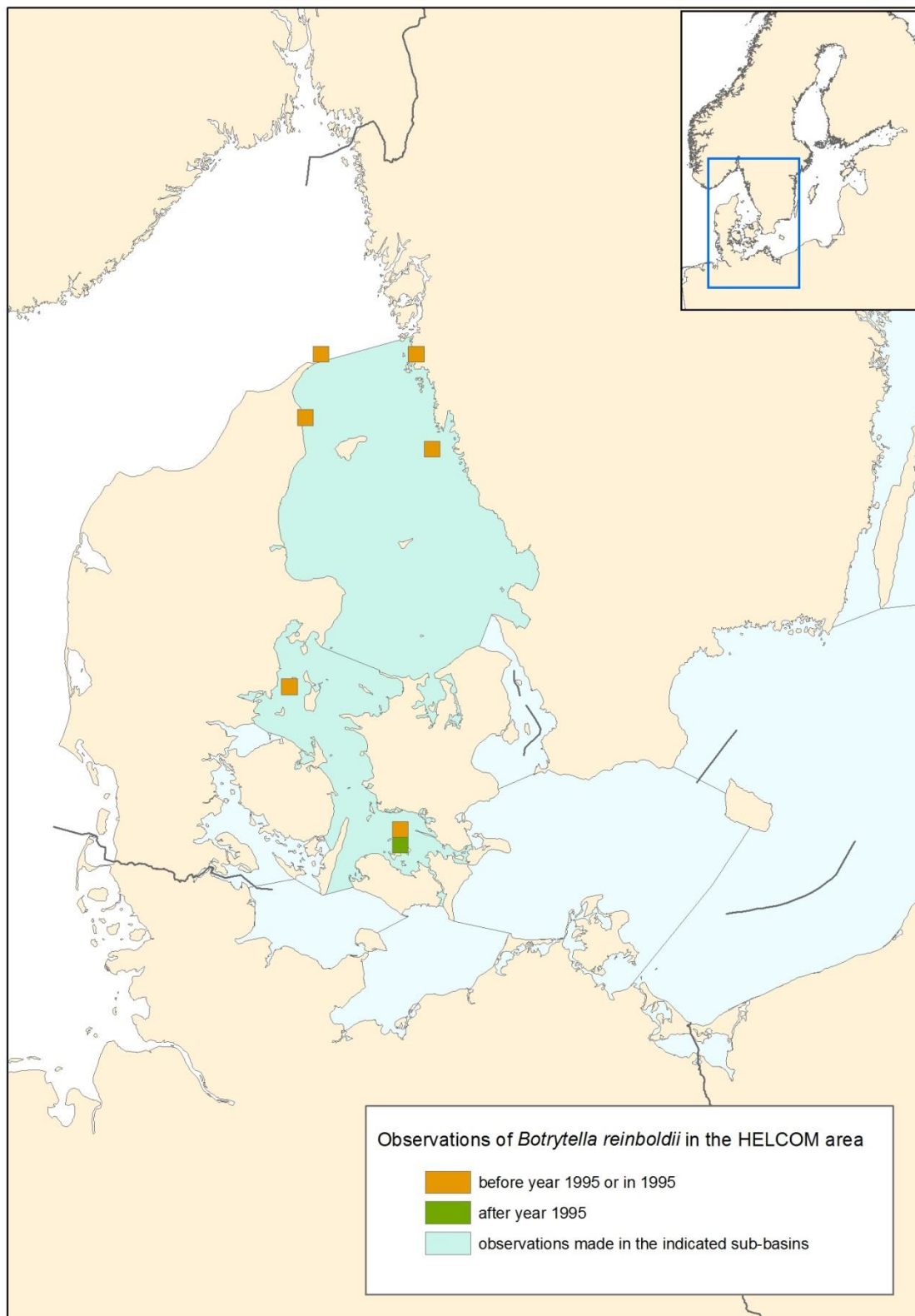


Herbarium sheet of *Botrytella reinboldii* from Helgoland (Biologische Anstalt Helgoland, Alfred-Wegener Institute).

SPECIES INFORMATION SHEET

*Botrytella reinboldii***Distribution map**

The records of species compiled from the Danish national database for marine data (MADS), the database of the Swedish Species Information Centre, Botanical Museum Lund (LD), and Uppsala Museum of Evolution Herbarium (UPS). The northernmost observation is very close to the border of the HELCOM region.



SPECIES INFORMATION SHEET

Botrytella reinboldii

Habitat and ecology

Due to the rarity of *Botrytella reinboldii*, little is known about its habitat preferences or ecology. The species has been found epilithic on shell bottoms as well as on pebble/gravel bottoms but also epiphytic on other algae. It is a marine alga, which seems to tolerate brackish water to a limited degree (~ 18 psu). Most observations are from spring time (May) but there is also one record from August. Depth distribution seems to range from 1 to 12 m.

Description of major threats

Not known.

Assessment justification

The observational data on the species is very scarce both within the Baltic Sea and the neighbouring marine areas. The species is small and easily overlooked. It is not known how many occurrences the species may have in the Baltic Sea area, and whether it has declined or not in recent decades. The species is categorized as Data Deficient.

Recommendations for actions to conserve the species

The effort for looking for this species should be increased in order to find out more about its distribution and occurrences, habitats, and potential trends in its population.

Common names

Denmark: –, Estonia: –, Finland: –, Germany: –, Latvia: –, Lithuania: –, Poland: –, Russia: –, Sweden: druvgryn.

References

- Algaebase (2012). Available at <http://www.algaebase.org>
- Johansson, G., Aronsson, M., Bengtsson, R., Carlson, L., Kahlert, M., Kautsky, L., Kyrkander, T., Wallentinus, I. & Willén, E. (2010). Alger – Algae. Nostocophyceae, Phaeophyceae, Rhodophyta & Chlorophyta. In Gärdenfors, U. (ed.) Rödlistade arter i Sverige 2010 – The 2010 Red List of Swedish Species. ArtDatabanken, SLU, Uppsala. P. 223–229. Red List categories available also at <http://www.artfakta.se/GetSpecies.aspx?SearchType=Advanced>
- Kornmann, P. & Sahling, P.-H. (1988). The disentanglement of the *Botrytella (Sorocarpus)*-complex (Ectocarpaceae, Phaeophyta). *Helgoländer Meeresuntersuchungen* 42: 1–12.
- MADS, The Danish national database for marine data. NERI: University of Aarhus; National Environmental Research Institute. Downloaded in August–September 2010.
- Newton, L. (1931). A handbook of the British seaweeds. pp. [i]-xiii, 1–478, 270 figs. London: British Museum (Natural History).
- Nielsen R., Christiansen A., Mathiesen L. & Mathiesen H. (eds.) (1995). Distributional index of the benthic macroalgae of the Baltic Sea area. *Acta Botanica Fennica*, Vol 155.
- Nielsen R. (2005). Danish seaweeds. Distribution index.
- Wallentinus, I. (2012). *Botrytella reinboldii* druvgryn. Artfaktblad. Artdatabanken, SLU. 2012-01-19. Available at [http://www.artfakta.se/Artfaktblad/Botrytella Reinboldii_232653.pdf](http://www.artfakta.se/Artfaktblad/Botrytella_Reinboldii_232653.pdf)