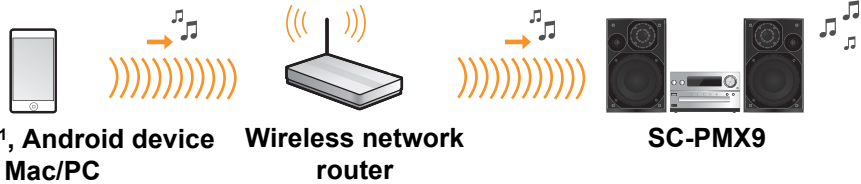


VQC9787-1

Wi-Fi® connection guide

You can wirelessly stream music from an iOS device, an Android™ device or a Mac/PC to SC-PMX9's speakers. To use this music-streaming feature, SC-PMX9 must join the same 2.4 GHz wireless network as the compatible device through the wireless network router (access point).

• For information on how to connect with a LAN cable, refer to "Wired LAN connection" in the Owner's Manual.

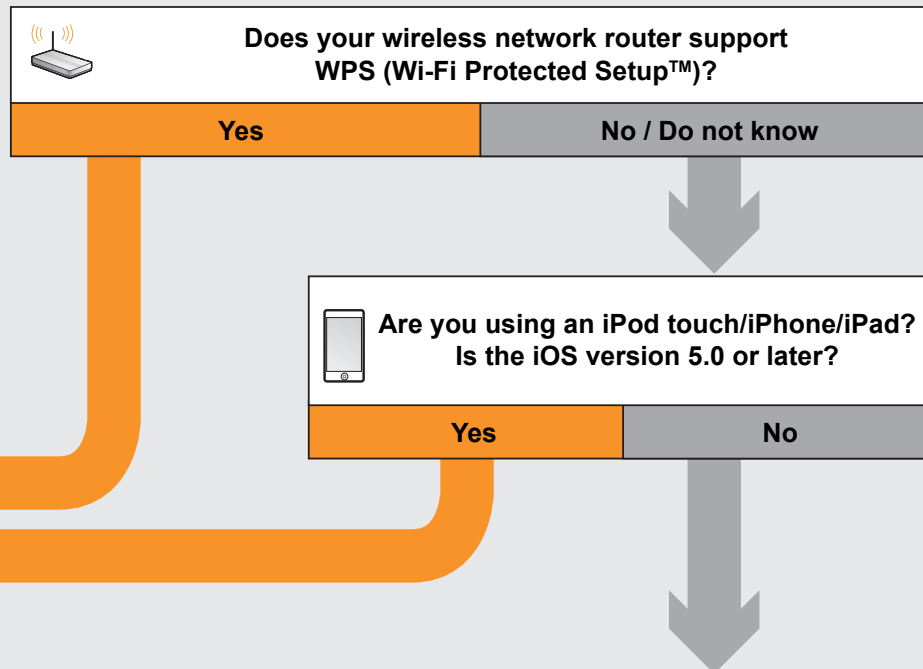
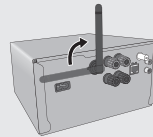


*1: Refer to the Operating Instructions for the compatibility. Screen images used in this sheet : iPhone 4S, iOS 6.0.1

Start wireless network settings

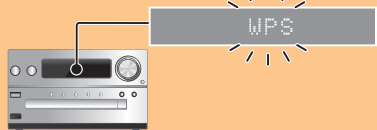
Preparation

- Place the SC-PMX9 as close to the wireless network router as possible and then point the antenna on the rear of the main unit up as shown in the figure.
 - Do not tilt the antenna forward or backward when it is pointing up.
- Connect the AC power supply cord while the LAN cable is disconnected.
- Turn this system on.
- Follow the chart below to choose the network setting method.
 - If you want to perform wireless setting with your Mac/PC, or you want to apply the advanced setting, refer to "Method 4" in the Owner's Manual.

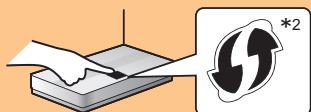


Method 1

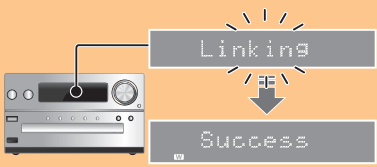
- Press [SETUP] on the remote control repeatedly to select "Net Setup" and then press [OK]. "With iPod" is indicated on the display.
- Press [SETUP] on the remote control repeatedly to select "WPS Push" and then press [OK]. "WPS" flashes on the display.



- Press the WPS button on the wireless network router.



The settings are completed when "Success" is displayed and "W" is indicated on the display.



- Press [OK] on the remote control to exit.

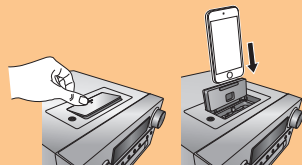
*2 : The marking may differ.

Method 2

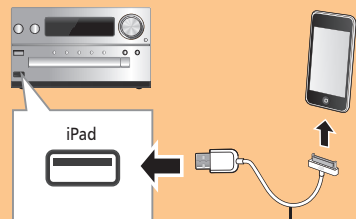
The following explanations are based on an iPhone.

- Disconnect iPod/iPhone/iPad connected to the main unit.
- Connect the iPhone to your home wireless network.
- Connect the iPhone to the main unit. Choose one of the following connections.

Lightning connector compatible iPod touch/iPhone:



iPod touch/iPhone/iPad with iOS 5.0 or later:



Dedicated cable supplied with the iOS device

- Press [SETUP] on the remote control repeatedly to select "Net Setup" and then press [OK]. "With iPod" is indicated on the display.

- Unlock your iPhone and then press [OK] on the remote control.

- A message will pop-up on the iPhone. Allow the iPhone to share the wireless network settings.



- The settings are completed when "Success" is displayed and "W" is indicated on the display.

- Press [OK] on the remote control to exit.

Method 3

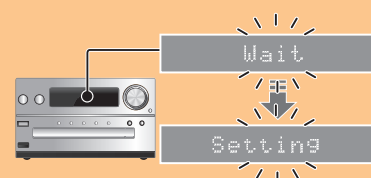


You can make the wireless network settings with the app, "Panasonic Stereo System Network Setup" (for free). If you're using an Android device, download the app at Google Play™. If you're using an iPod touch/iPhone/iPad, download it at the App Store.

Preparation

- Connect your smartphone to your home wireless network.
- Check the password for your home wireless network.

- Press [SETUP] on the remote control repeatedly to select "Net Setup" and then press [OK]. "With iPod" is indicated on the display.
- Press [SETUP] on the remote control repeatedly to select "Manual" and then press [OK].



- Start "Panasonic Stereo System Network Setup" on your smartphone and follow the indications.

Note for the iOS version

After step 3

- Enter the password for the home wireless network to which the iOS device is connected.
- When a message instructing you to connect the iOS device to this system is displayed, press the home button.
- On the Wi-Fi network selection screen in "Settings", select "00 Setup _ _ _ _ _".



- When a message indicating the completion of the connection to this system is displayed, restart the app.



- When a message indicating the completion of the Wi-Fi setup of this system is displayed, close the app, and then check the operation of AirPlay, etc.

Using AirPlay

The following explanations are based on an iPhone.

- AirPlay, iPad, iPhone, and iPod touch are trademarks of Apple Inc., registered in the U.S. and other countries. Lightning is a trademark of Apple Inc.
- App Store is a service mark of Apple Inc.
- Android and Google Play are trademarks of Google Inc.
- The Wi-Fi CERTIFIED Logo is a certification mark of the Wi-Fi Alliance.
- The Wi-Fi Protected Setup Mark is a mark of the Wi-Fi Alliance.
- "Wi-Fi" and "Wi-Fi Protected Setup" are marks or registered marks of the Wi-Fi Alliance.
- All other trademarks are trademarks of their respective owners.

If you have any questions, visit:

U.S.A.: www.panasonic.com/support

Canada: www.panasonic.ca/english/support

- Connect the iPhone to your home wireless network.



*3: You may be prompted for the password. Enter the password of your home wireless network.

- Select "Panasonic PMX9 _ _ _ _ _" from the AirPlay icon and start play.



Play starts.
(with a slight delay)